

# Bass Station II

---

## Librarian User Guide

# CONTENTS

<b>Introduction .....</b>	<b>3</b>
<b>Operating System Compatibility .....</b>	<b>3</b>
<b>Installation Mac/Windows .....</b>	<b>3</b>
<b>The Bass Station II Librarian .....</b>	<b>3</b>
<b>Overview .....</b>	<b>3</b>
<b>Transferring a patch from the Librarian.....</b>	<b>3</b>
<b>Using Banks and Folders .....</b>	<b>4</b>
<b>Transferring an entire Bank from the Librarian to the Bass Station II.....</b>	<b>4</b>
<b>Transferring subsets of patches from a Bank to the Bass Station II .....</b>	<b>4</b>
<b>Restoring Factory Defaults .....</b>	<b>4</b>
<b>Re-ordering patches within a Bank .....</b>	<b>4</b>
<b>Grabbing patches .....</b>	<b>4</b>
<b>Resetting patches and the Init Patch.....</b>	<b>4</b>
<b>Naming patches.....</b>	<b>4</b>
<b>Searching for patches .....</b>	<b>4</b>
<b>Import/Export SysEx.....</b>	<b>5</b>
<b>Drag and Drop SysEx.....</b>	<b>5</b>

## Trade marks

Novation is a registered trade marks of Focusrite Audio Engineering Limited.

Bass Station II is a trade mark of Focusrite Audio Engineering Limited.

Sony/Philips Digital Interface (SPDIF) is a trade mark of Sony Corporation and Philips Electronics.

VST is a trade mark of Steinberg Media Technologies GmbH.

Audio Units (AU) is a trade mark of Apple, Inc.

RTAS is a trade marks of Avid, Inc.

2010 © Focusrite Audio Engineering Limited. All rights reserved.

## Disclaimer

Focusrite has taken all possible steps to ensure that the information given here is both correct and complete. In no event can Novation accept any liability or responsibility for any loss or damage to the owner of the equipment, any third party, or any equipment which may result from use of this manual or the equipment which it describes. The information provided in this document may be modified at any time without prior warning. Specifications and appearances may differ from those listed and illustrated.

# INTRODUCTION

The Bass Station II Librarian is a dedicated software application, which provides a powerful management tool for on and off-line synth patches.

**NOTE:** The scope of this manual is to introduce the software features available in the Librarian. It does not provide detailed explanations of each synthesizer parameter. For a more detailed explanation, please refer to the *Bass Station II User Guide* supplied with the synthesizer.

**NOTE:** The Bass Station II is capable of generating audio with a large dynamic range, and if taken to extremes, could cause damage to loudspeakers or other components, and also to your hearing!

# OPERATING SYSTEM COMPATIBILITY

## Macintosh

OS X 10.9 Mavericks, OS X 10.8 Mountain Lion

## Windows

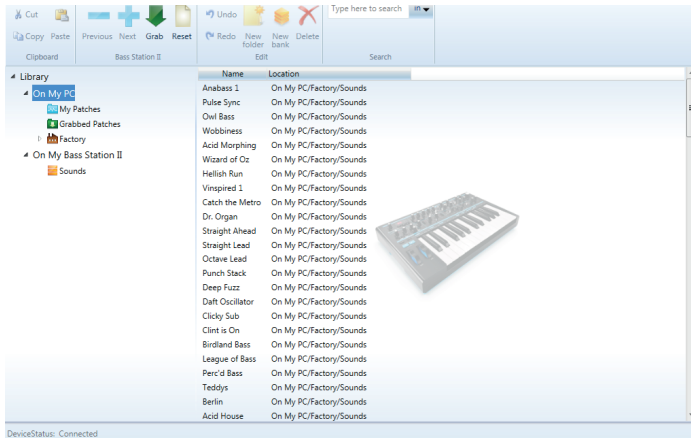
Windows 8.1, Windows 8, Windows 7

For more information on compatibility visit [www.novationmusic.com/Bass Station II](http://www.novationmusic.com/Bass_Station_II).

# THE BASS STATION II LIBRARIAN

The Librarian is a dedicated software application that lets you save and organise your synth patches in a manner which is much easier to access and manage than with the Bass Station II's internal patch management system.

The Librarian can be launched from **Start > All Programs > Novation > Bass Station II > Bass Station II Librarian** (for Windows) and **Applications > Bass Station II Librarian** (for Mac). Thus no other applications need to be running in order for the Librarian to operate.



## Overview

The Librarian window is arranged as a conventional file management screen with two panes – the left hand one listing folders and the right hand one listing files (patches in this case).

The folder system is basically divided into two – patches stored in the computer (**On My PC** or **On My Mac**) and those stored on the Bass Station II (**On My Bass Station II**). In addition to the patch name, the pathname is also listed showing the file location of the patch.

The **On My PC** or **On My Mac** folder contains three further folders:

- **My Patches** – where any patches you want to keep are stored. You can right-click on the **My Patches** icon, select **Create Folder** and create and name further folders within **My Patches**.
- **Grabbed Patches** – reserved for patch capture from the Bass Station II.
- **Factory** – this contains backup copies of all the original Bass Station II factory patches. These cannot be altered, so will be available even if you overwrite the original versions in the Bass Station II itself. This folder contains one bank.

The **On My Bass Station II** folder contains the patches which are currently stored on your Bass Station II. These patches are visible in the Librarian when connected. This folder contains one bank of 128 patches to match the synth.

**NOTE:** It may take up to 20 seconds for the Librarian to sync with your Bass Station II when connected for the first time.

## Transferring a patch from the Librarian

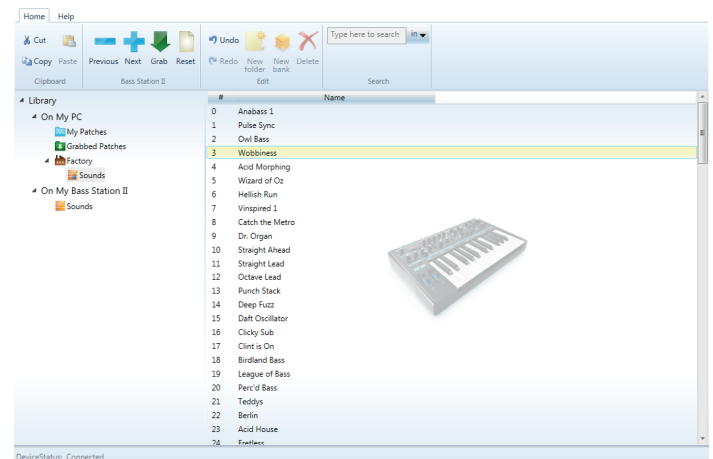
Any patch, in any folder, may be immediately loaded into the Bass Station II by double-clicking anywhere on its entry in the right-hand pane. (A single-click merely highlights the patch in the list).

Note that loading a patch from **On My PC** or **On My Mac** merely configures the synth to the settings corresponding to that patch, and does not overwrite any patch memory in the Bass Station II. Selecting patches listed in **On My Bass Station II** will load the patches stored in the hardware.

The Bass Station II's display will show three dashes (---) to show that the current patch has been received from the librarian rather than one currently stored on the product. However, the original patch remains in its correct location. (It is, of course, possible to overwrite it by using the Bass Station II's save function – see *Bass Station II User Manual* for details).


**NOTE:** Pressing the Patch buttons on the Bass Station II will increment or decrement the patch loaded into the synth with the next original patch stored in the hardware, thus overriding the patch loaded in from the Librarian. The Patch buttons do not control the patch list in the software, they control the patches stored on the Bass Station II.

**HINT:** A series of patches may be auditioned in sequence by using the **Next (+)** and **Previous (-)** keys on the toolbar. Double-click the first patch in the sequence to load it into the Bass Station II and use **Next** and **Previous** as required.



## Using Banks and Folders

The Bass Station II's internal patches are arranged in a Bank. This arrangement is represented in the Librarian, with one Bank being provided in the **Factory** and **On My Bass Station II** folders. We've named this Bank 'Sounds'.

- Bank icon: 

It is also possible to create a new Bank in **My Patches**. This is effectively a new folder with provision for 128 patches. You can rename such Banks at will. The advantages of using Banks over folders as the basis for your patch management are:

- An entire Bank can be uploaded to the Bass Station II as a single action.
- Patches can be assigned specific patch numbers within a Bank, which is of enormous benefit when creating a live performance set list.

- Folder icons: 

Folders have no limit on the number of patches which they may contain, but can contain further folders, and can be organised in whatever manner – just like any other computer file management system – that suits your method of working. However, because patches in a folder are not associated with any specific patch number, it is not possible to "re-order" the patches in a folder.

Note that for easy reference, the icon in the left-hand pane denoting a bank is different from that denoting a folder.

## Transferring an entire Bank from the Librarian to the Bass Station II

This can be simply achieved by selecting the Bank to be uploaded in the left-hand pane, and dragging it on to the Sounds Bank in **My Bass Station II**. The patches contained in the new Bank will occupy the equivalent locations in the Bass Station II, but note that this procedure will overwrite the previous contents of the Bass Station II's internal Bank.

## Transferring subsets of patches from a Bank to the Bass Station II

It is also possible to load a subset of patches of a Bank into the Bass Station II. To do this, select all the patches to be uploaded by clicking on their entries in the list in the right-hand pane, using SHIFT and/or CTRL/Cmd keys as necessary to select contiguous or individual patches. The selected subset can then be dragged from the right-hand pane to the Sounds Bank. Hold the pointer over the Sounds bank and its list of presets will then be displayed in the right-hand pane. Move the pointer to the location where you want the first patch to occupy and release. The transferred patches will sequentially occupy the bank, starting at the chosen location.

## Restoring Factory Defaults

Because the Factory folder (in **On My PC** or **On My Mac**) always contains a locked set of the original factory patches, restoring the Bass Station II to its initial factory default settings is simply accomplished by dragging the Factory Sounds Bank on to the Sounds Bank in **On My Bass Station II**.

## Re-ordering patches within a Bank

When working with patches in User Banks in **On My PC** or **On My Mac**, it will be generally useful to arrange the patches in sequential order. If the Bass Station II is being used in live performance, this will be the order in which they will be required in the set list.

To re-order patches within a Bank, click on the patch to be moved in the list in the right-hand pane and drag it to its new position. All patches with a higher location will "move down one" to make room for it.

## Grabbing patches

The Bass Station II's current patch may be stored in the Librarian at any time by clicking on the **Grab** icon on the toolbar (a large green arrowhead). This opens the **New Patch Received** dialogue box.

Once the current patch is in the **Grabbed Patches** folder, it can be renamed (if wished) and dragged to a different folder or Bank location in **On My PC** or **On My Mac** for future use.

The usefulness of grabbing patches in this way is that it enables you to rapidly store the sound currently in use, whether that has been created "from scratch", or as a modification to a factory patch. There is clearly no advantage in grabbing an unchanged factory patch, as they are always available from the Librarian in any case.

## Resetting patches and the Init Patch

If you want to create a sound "from scratch", a good starting point is to use the Init Patch. This is a basic single sawtooth oscillator sound, with no filtering, envelopes or modulation. Patches 70 - 127 of the Bass Station II's Sounds Bank are pre-loaded with 58 copies of Init Patch. The Sounds Bank in the **Factory** folder contains the same set.

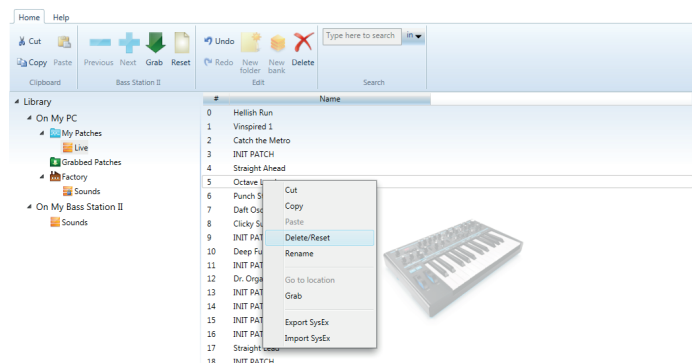
This procedure is essentially no different from loading any other patch from anywhere else in the Librarian; the parameters of Init Patch are transferred to the Bass Station II by clicking on the **Reset** icon (similar to a "New document" icon) on the toolbar. As with other patch loading, three dashes (---) are shown in the Bass Station II's display, but the patch is now named Init Patch. The contents of the original patch location are not overwritten.

When you have created the sound you want, the amended version of Init Patch can be grabbed back into the Librarian in the manner already described (see previous section **"Grabbing patches"**).

Note that use of the **Reset** button does not alter the contents of any folder or Bank in the Librarian – it simply loads a copy of Init Patch into the Bass Station II.

Patches in Librarian Banks may be reset to Init Patch using a different procedure. This method permanently removes unwanted patches from a Bank. To do this, select the patch(es) to be replaced with Init Patch, and right-click. Select **Delete/Reset** from the pop-up menu. This will overwrite the selected patch(es) with the Init Patch. This procedure does not change anything in the Bass Station II; its patch and all its current settings will remain unaltered.

Similar patches stored in folders can be deleted in the same manner, using the **Delete/Reset** command.

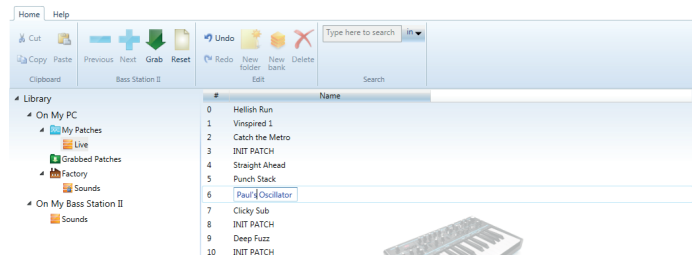


**NOTE:** **Undo** and **Redo** buttons are available in the toolbar. Inadvertently deleted or reset patches in the Librarian can be restored using these buttons. The usual keyboard shortcuts should also be available. It is important to remember that all Undo history will be lost as soon as the Librarian is shut down. Care should be taken so that you do not unintentionally lose any sounds when using the **Delete/Reset** command.

## Naming Patches

Once a patch has been Grabbed it will generally be desirable to rename it. Right-clicking anywhere on any patch entry (in any folder/Bank) will open a pop-up menu, from which **Rename** may be selected. This will select the patch name (it turns blue), for editing. Click outside the field or hit Return on the keyboard when finished. Patch names stored on the Bass Station II can also be renamed in this way.

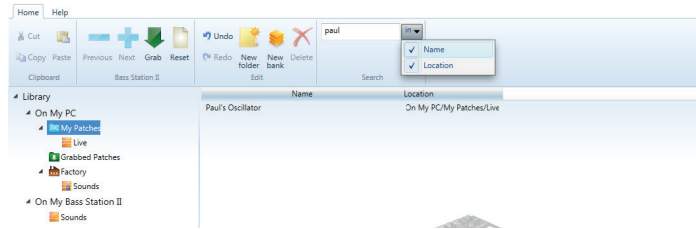
Naming can be performed on patches in any of the **My Patches** and **Grabbed Patches** folders or Banks.



## Searching for Patches

The Librarian includes a convenient real-time Search function which allows you to display only patches with text in their various fields which match that entered as search criteria.

The text to search for is entered in the **Type here to search** box on the toolbar. Click the arrow to open a drop-down list of the fields to which the search criterion is to be applied: **Patch Name** and **Location** are available and any or all may be selected. The displayed subset of patches may then be used in the normal way.



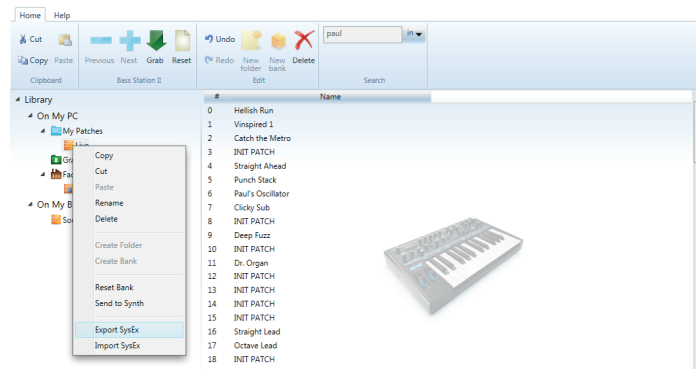
**HINT:** Once a subset has been found by the Search function, its contents may be auditioned in sequence by using the **Next (+)** and **Previous (-)** keys, as described in **"Transferring a patch from the Librarian"** on page 3.

The Search criterion may be cleared by clicking in the box and using your computer keyboard's **Backspace** key to delete the text characters one at a time, or by selecting the text and pressing the **Delete** key. Deleting the search text string will automatically display the full patch list in the selected folder.

**NOTE:** The Search function only works in the **My Patches** and **Grabbed Patches** folders. It will also work with any subfolders of **My Patches**, but not with patches located in Banks.

## Import/Export SysEx

Patches can be imported to or exported from the Librarian in the form of MIDI SysEx (\*.syx) files. It is possible to export either entire folders/Banks by selecting them in the left-hand pane, or a subset of patches by selecting them in the right-hand pane, using the SHIFT and/or CTRL/Cmd keys as necessary to select contiguous or individual patches. Once the chosen folder/Bank or patches are selected, a right-click will open a pop-up menu from which **Export SysEx** may be selected. Choose the file name and location where the \*.syx file is to be stored in the usual manner.



The procedure for importing SysEx files is very similar. To import a file into a folder or Bank, select the destination in the left-hand pane and right-click. From the pop-up select **Import SysEx** and choose the file to be imported.

**NOTE:** For folders, all imported patches will be added to the bottom of the patch list displayed in the right-hand pane. For Banks, all imported patches will be added sequentially from patch location 000 onwards.

To import patches to specific locations in a Bank, first (in the right-hand pane) highlight the chosen patch location where you want the initial patch to be imported into. Then right-click and select **Import SysEx**. Choose the desired \*.syx file and the patch(es) will be imported. If the file contains multiple patches, the first patch will be loaded into the highlighted location and the remaining patches will load sequentially thereafter. Note that importing patches into Banks will overwrite any existing patches in those locations.

## Drag and Drop SysEx

In addition to the Import/Export SysEx command, it is also possible to select a folder, Bank or patch(es) and, with a left-click and hold action, drag it/them off the Librarian window and directly on to the computer's desktop or into an open directory or folder. This is, in effect, a shortcut to using the **Export SysEx** feature.

Likewise, it is possible to drag and drop a \*.syx file into the Librarian. If dragging a file into a Bank you can position the pointer over the location where you want the patches to load. Once released, the patch(es) will import directly into that Bank starting from the location of the pointer.