



Cooling

## Operating Instructions

# 40cm Misting Fan



Item: CELMF110

# General Care and Safety Guide

**Thank you for choosing this Celsius product. This Celsius appliance has been designed and manufactured to high standards of engineering and with proper use and care, as described in this leaflet, will give you years of useful service. Please read these instructions carefully and keep them for future reference.**

1. Use only the voltage specified on the rating plate of the appliance.
2. Keep all objects at least 1 Metre from the front, sides and rear of the appliance
3. This appliance is intended for household use only and not for commercial or industrial use.
4. Use this appliance only as described in this manual. Any other use is not recommended by the manufacturer and may cause fire, electric shock or injury.
5. The common cause of overheating is deposits of dust or fluff in the appliance. Ensure these deposits are removed regularly by unplugging the appliance and vacuum cleaning the air vents and grills.
6. Always unplug appliance when not in use.
7. When the appliance has been unpacked, check it for transport damage and ensure all parts have been delivered. If parts are missing or the appliance has been damaged, contact the CDB Customer Services Team.
8. If your appliance does not work, or is not working properly, contact the place of purchase. Repair work on the appliance by unqualified persons can cause serious risk to the user.
9. Ensure hands are dry before handling the plug or the main unit.
10. Carry out regular checks of the supply cord to ensure no damage is evident.
11. Children should be supervised to ensure that they do not play with the appliance.
12. Ensure that the cord is fully extended (not coiled) while in use.
13. Avoid contact with the moving parts. Keep hands, hair, clothing, away from blade of the fan during operation to reduce the risk of injury to person and/or damage to the unit.
14. Switch off and use handles provided when moving.
15. This appliance is not intended for use by persons (including children) with reduced physical, sensory or mental capabilities or lack of experience and knowledge, unless they are supervised or have been given instruction concerning the use of the fan by a person responsible for their safety.
16. It is recommended that this fan is plugged directly into the wall socket.
17. A correctly specified, undamaged extension cord may be used with this fan provided it is used in a safe manner.
18. Never place appliance close to radiant heat source.
19. Never operate in areas where petrol, paint or other flammable liquids are used or stored.
20. Never use the appliance to dry clothes.
21. Never insert or allow foreign objects to enter any ventilation or exhaust opening, as this may cause an electric shock, fire or damage to the appliance.
22. Never use abrasive cleaning products on this appliance. Clean with a damp cloth (not wet) rinsed in hot soapy water only. Always remove plug from the mains supply before cleaning.
23. Never connect the appliance to mains supply until completely assembled and adjusted.
24. Never remove plug from power socket until the appliance has been switched off.
25. Never remove plug from power socket by pulling cord – always grip plug.
26. Never twist, kink or wrap the cord around the appliance, as this may cause the insulation to weaken and split. Always ensure that all cord has been removed from any cord storage area and is unrolled before use.
27. Never use this appliance in the immediate surrounds of a bath, a shower, or a swimming pool or other liquids. The appliance must not be immersed in any liquids.
28. Due to the risk of injury, never use this appliance for any purpose other than its intended use. This appliance is intended for use in household and similar applications such as staff kitchen areas in shops, offices and other working environments; farm houses, by clients in hotels, motels, bed and breakfast type environments and other residential type environments
29. Never use this appliance outdoors.
30. Never operate the appliance with a damaged cord or plug, after it malfunctions, or if it has been damaged in any manner. Have the appliance checked and repaired by a qualified electrician if repair is necessary. If the supply cord is damaged, it must be replaced by the manufacturer, its service agent or similarly qualified persons in order to avoid a hazard.
31. Never place the unit in wardrobes or other enclosed spaces as this may cause fire hazards.

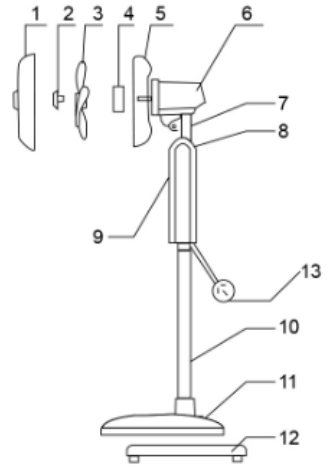
## TECHNICAL SPECIFICATION

|          |                   |
|----------|-------------------|
| Model:   | CELMF110          |
| Supply:  | 220 - 240VAC 50Hz |
| Wattage: | 70W               |

# Components

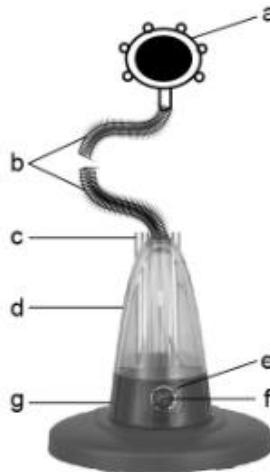
## Main Housing

1. Front Grill
2. Fan Blade Nut
3. Fan Blade
4. Rear Grill Lock Nut
5. Rear Grill
6. Motor Body
7. Tilt Neck
8. Switch Housing
9. Display & Control Panel
10. Support Poles
11. Base
12. Base Weight
13. Power Cord & Plug



## Water Components

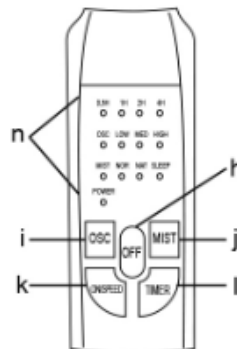
- A. Mist Outlet
- B. Mist Delivery Hose
- C. Water Tank Cap
- D. Water Tank
- E. Humidifier Indicator Light
- F. Variable Mist Setting Switch
- G. Humidifier Power Base



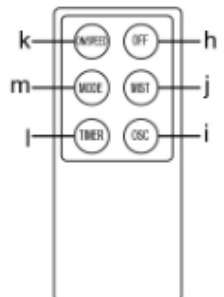
## Main Unit Control and Remote control

- H. OFF – Main Power OFF Button
- I. OSC – Oscillation ON/OFF Button
- J. MIST – Misting ON/OFF Button
- K. ON/SPEED – Main Power ON Button/Speed selector
- L. TIMER – Timer Setting Button
- M. MODE – Mode Selector (Only on remote control)
- N. Indicator Lights/Status Lights (Only on main unit)

### Main Unit Control Panel



### Remote Control



# Assembling your Fan

Always choose a safe location for the appliance, keeping in mind the safety precautions outlined. Ensure all packaging has been removed from the unit before use. This appliance requires no installation, it should be used solely as a portable appliance.

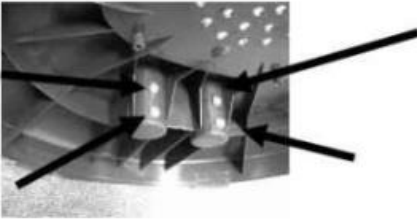
## Assembling your fan

Your Misting Fan has been boxed unassembled to minimise packaging waste. Each part is designed to fit together and be disassembled easily for cleaning or storage.

Remove the 2 screws from the support poles. Insert the support poles into the base. Reattach and tighten the 2 screws.



Place the base weight under the base and attach using the 4 screws provided.



Ensure that the base weight is correctly assembled as depicted in diagram below.



INCORRECT



CORRECT

Assemble the main unit to the support poles using the 2x screws provided on the main unit. These screws must be loosened before installing and then tightened once in place.



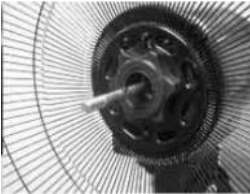
# Assembling your Fan

## Assembling your fan Continued

Place the humidifier power base onto the base.



Remove the fan blade nut and the rear grill lock nut from the motor shaft spindle. Fit the rear grill into place by positioning on the location pins. Secure the rear grill to the motor body with the rear grill lock nut.



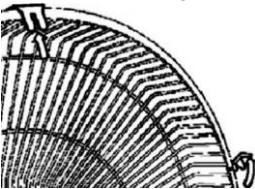
**NOTE: The handle on the rear grill must face upwards**  
**NOTE: Do not force or over tighten the rear grill lock nut**

The groove in the centre of the fan blade aligns with a T-Bar on the motor spindle to ensure correct positioning. Secure the fan blade in place with the fan blade nut by turning it anti-clockwise. Check that the fan blade rotates freely by turning it with your hand.

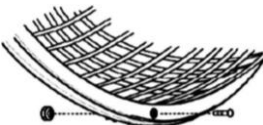
**NOTE: The fan blade nut is self-tightening; do not force it.**



Lift out all locking clips and remove nut & screw at the bottom of the the front grill.



Place the front grill into position and secure it by fastening the locking clips over the outer rim. The screw and nut at the bottom of the grill must be fitted.



# Assembling your Fan

## Placement of the water tank

Place the water tank onto the humidifier power base.



## Placement of the mist pipe

Connect the mist delivery hose to the mist outlet and water tank cap. Place the water tank cap onto the water tank.



Push the mist outlet onto the central hub of the front of the grill to attach it securely.

## Remote

Remove the back cover of the remote control. Insert 2 x AAA batteries (not included). Ensure batteries are inserted in the correct + positive/ - negative orientation.

Do not mix battery types. When replacing, ensure both batteries are changed simultaneously.

Your misting fan is now ready to use.

# Operating your Fan

**WARNING** Keep all objects at least 1 metre from the front, sides and rear of the appliance

## Filling the water tank

Make sure the fan is off and unplugged.

Pull out the lower end of the mist delivery hose, then carefully remove the water tank from the humidifier power base.

Turn the water tank over, and open the valve body cover by turning it in a anti-clockwise direction.

Fill the tank with clean water.

Close the valve body cover.

**NOTE: There is a white silicone ring which must not be loosened when filling the water tank with water.**

Replace the water tank on the humidifier power base.

Replace the lower end of the mist delivery hose into the top of the water tank cap.

When there is no water in the water tank, the humidifier power base will stop working, and an indicator light will change from green to red. Should this occur, switch off the mist fan and re-fill the water tank with water so you can continue to use the mist function as and when desired.

## Tilt Adjustment

The tilted angle on the fan can be adjusted to suit the user. Push downward from the top of the grill or pull upward from the bottom of the grill.

**CAUTION: The fan should always be switched off when making this adjustment.**

Check that the fan control switch is set to the off position before plugging into the mains supply.

Place the fan on a dry, level and sturdy surface.

Plug the power cord into the socket, making sure the speed control is at off position.

A “beep” sound will be heard indicating that the mist fan is connected to the power. The POWER indicator light on the main control panel will illuminate. The mist fan can now be switched on either on its main control panel or by the remote control.

# Operating your Fan


## Fan control switch

Press ON/SPEED button to switch the unit on.

By default, the mist fan will be switched on in:

- Low Speed Setting
- Fixed Direction
- Normal Wind Mode Setting

After switching on the mist fan, you can select different speed settings or wind modes that you prefer. The table shows which switches perform which speed and wind functions.

| Remote Control  | Main Control Panel  | Indicator Lights       | Features   |
|---|---|------------------------|--|
| OFF   |   | POWER                  | Standby mode. The fan is ready to use but has not started operating yet.   |
| ON/SPEED  |   | LOW<br>MED<br>HIGH     | Press Once - Low Wind speed setting<br>Press Twice - Medium Wind speed setting<br>Press Three Times - High Wind speed setting  |
| OSC   |   | OSC                    | Press Once - The Fan head will oscillate<br>When pressing again - The Fan head will be fixed in one direction only   |
| MIST  |   | MIST                   | Press Once - The Fan will generate mist<br>When pressing again - The Fan will stop generating mist   |
| TIMER   |   | 0,5H<br>1H<br>2H<br>4H | Every press represents a time increase of 30 minutes. Max. time on the timer is 7,5 hours. When pressing again while it is set to 7,5 hours all time settings will be cancelled. |
| <u>Remote Control Only</u><br>MODE                              |   | NOR<br>NAT<br>SLEEP    | For selecting different Wind outputs:<br>- Normal Wind Mode<br>- Natural Wind Mode<br>- Sleep Wind Mode  |
| <u>Variable Mist Setting Switch</u><br>(On the Power Base Only) |  |                        | To adjust the volume of mist to be generated:<br>Counter-clockwise - Less Mist Volume<br>Clockwise - Greater Mist Volume   |

**IMPORTANT! NEVER COVER THIS APPLIANCE!**



# Cleaning and Maintenance

## Cleaning the unit

The unit requires regular cleaning to ensure trouble free operation.

Switch off and unplug the mist fan from the mains supply before assembling or disassembling and before cleaning.

Use a damp cloth (not wet) to wipe the exterior of the mist fan to remove dust and dirt.

Remove the front guard and the blades carefully, be careful not to drop the blades.

Use a damp cloth (not wet) to wipe the fan blades.

Light soap can be used for tougher stains.

Wipe thoroughly with a dry cloth, replace the fan blade and lock the guard securely before use.

Use a vacuum cleaner to remove dust and fluff from around the grill and the air vents at the rear of the main body. Do not probe any openings to remove fluff.

Do not use harsh detergents, chemical cleaners or solvents such as benzene, thinners or polishing agents. They may damage the surface finish of the fan components.

Ensure the mist fan is dry before plugging back into the mains supply.

Never spray with liquids or submerge the misting fan in water or any other liquid.

Do not attempt to dismantle the motor. There are no user serviceable parts. For service or repair, contact an authorised electrical service technician.

## Cleaning the water tank

Switch off and unplug the mist fan from the mains supply before assembling or disassembling and before cleaning.

It is recommended that you clean the water tank every 2-3 weeks.

Pull out the water tank before cleaning it.

If the mist feature will not be used for a long time, empty the water tank and leave it to dry before recapping it.

Do not fill the water tank with water over 45degrees Celsius, to avoid discoloration or deformation.

When ambient temperature is near or below 0degrees Celsius, remove all water from in and around the tank to prevent ice forming, which could damage components.

Do not fill water anywhere other than the water tank. Mop up any spills immediately.

## PROOF OF PURCHASE

To receive warranty retain receipt as proof of purchase. (Refer to back of booklet).



## SUPPORT AND TECHNICAL ADVICE

### Celsius – New Zealand

Monday – Friday 8am-5pm

Phone +64 (0)9 917 4000

Phone 0800 232 633

info@celsius.co.nz

### Celsius – Australia

Monday – Friday 8am-5pm

Phone +61 (0)3 9365 5100

Phone 1300 465 324

info@celsiusforhome.com.au



# One Year Warranty

Thank you for purchasing this Celsius product. Your product is warranted against faults and manufacture when used in normal domestic use for a period of **one year**. In non-domestic use Celsius limits the voluntary warranty to **three months**.

Celsius undertake to repair or replace this product at no charge if found to be defective due to a manufacturing fault during the warranty period.

This warranty excludes damage caused by misuse, neglect, shipping accident, incorrect installation, or work carried out by anyone other than a qualified electrical service technician.

**PLEASE KEEP YOUR RECEIPT AS THIS WILL HELP VERIFY YOUR WARRANTY.**

The benefits given to you by this warranty are in addition to other rights and remedies available to you under law in relation to the goods or services to which this warranty relates.

In Australia, our goods come with guarantees that cannot be excluded under the Australian Consumer Law. You are entitled to a replacement or refund for a major failure and compensation for any other reasonably foreseeable loss or damage. You are also entitled to have the goods repaired or replaced if the goods fail to be of acceptable quality and the failure does not amount to a major failure.

In New Zealand this warranty is additional to the conditions and guarantees of the Consumers Guarantee Act (1993).

**Celsius – New Zealand**

PO Box 100-707  
N.S.M.C  
Auckland, 0745  
  
Phone +64 (0)9 917 4000  
Phone 0800 232 633  
www.celsius.co.nz

**Celsius – Australia**

PO Box 574  
South Morang  
Victoria, 3752  
  
Phone +61 (0)3 9365 5100  
Phone 1300 465 324  
www.celsiusforhome.com.au

**Celsius One Year Warranty** (IMPORTANT: Please complete and retain this warranty card)

Name \_\_\_\_\_

Address \_\_\_\_\_

Place Of Purchase \_\_\_\_\_ Date Of Purchase \_\_\_\_\_

Name Of Product \_\_\_\_\_ Model Number \_\_\_\_\_

Attach a copy of the purchase receipt to this warranty card

Due to continual design improvements, the product illustrated in this User Manual may differ slightly from the actual product.