

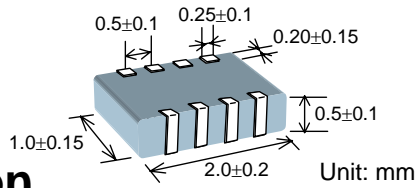
Common Mode Noise Filter Array

Smallest Size Common Mode Noise Filter Array

Appearance



Dimension

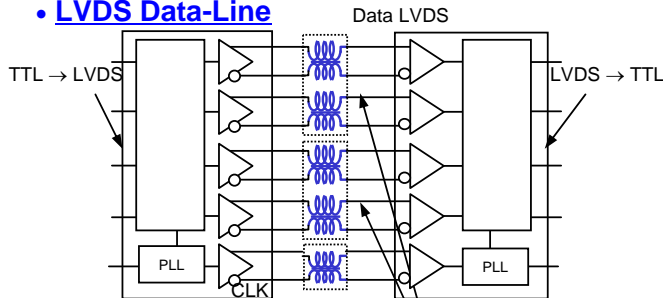


Specification

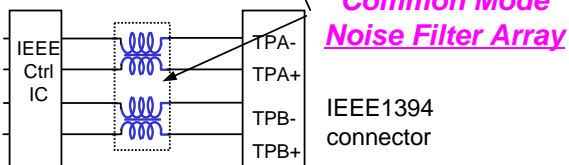
Part Number	Impedance(ohm) at 100MHz		Rated Voltage (V DC)	Rated Current (mA)	DCR (ohm) max.
	Common	Differential			
EXC28CE900U	90 typ.	15 max.	5	160	1.5
EXC28CE121U	120 typ.	18 max.	5	140	2.0
EXC28CE201U	200 typ.	20 max.	5	130	2.5

Applications

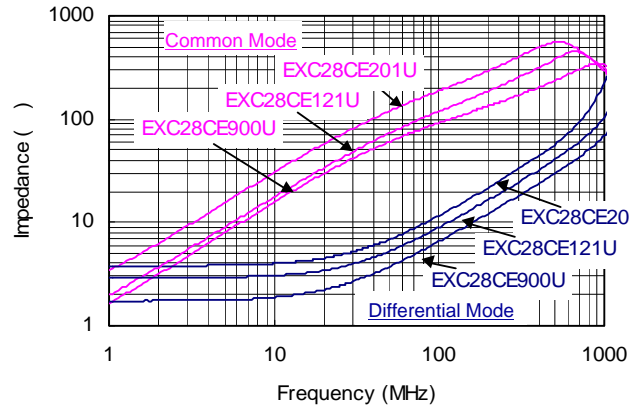
• LVDS Data-Line



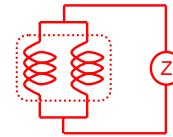
• IEEE1394 Data-Line



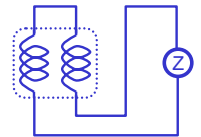
Impedance (Typical)



Common Mode



Differential Mode



Effect in IEEE1394

- Bit Error countermeasure
- Radiation noise suppression

