

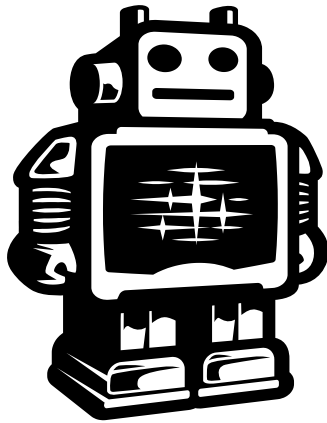
Cura 13.11.2

Ultimaker's software for making 3D prints

User manual



English Version 1.0



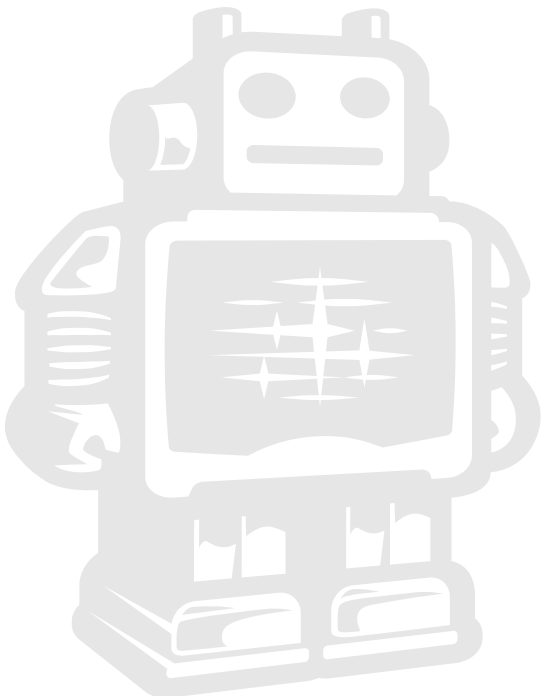
Ultimaker

Table of Contents

| | | |
|-----------|---|----|
| A. | Welcome to Cura | 4 |
| A1. | Cura for your Ultimaker | 5 |
| A2. | Latest upgrade and fixes | 6 |
| B. | Installing and configuring Cura | 7 |
| B1. | Compatible systems | 8 |
| B2. | Downloading and installing Cura | 9 |
| B3. | Configuration wizard Ultimaker | 10 |
| B4. | Continue the wizard for Ultimaker Original | 11 |
| B5. | Configuration wizard other 3D printers | 12 |
| C. | First time starting up Cura | 13 |
| C1. | Cura software interface | 14 |
| C2. | Print with quick print profile | 15 |
| C3. | Basic orientation | 16 |
| C4. | Adjusting your model | 17 |
| C5. | Where Ultimaker 2 and Ultimaker Original differ in Cura | 19 |
| C6. | From SD-card to print your file | 20 |
| D. | YouMagine.com and sharing with Cura | 21 |
| D1. | From YouMagine to load file in Cura | 22 |
| D2. | Upload from Cura to YouMagine.com | 23 |
| E. | The use of full settings and dual extrusion | 25 |
| E1. | Switch and use of full settings | 26 |
| E2. | Advanced settings | 28 |
| E3. | Extra full settings Ultimaker Original | 29 |
| E4. | Cura plugins | 30 |
| E5. | Start/End-GCode for Ultimaker Original | 31 |
| E6. | Dual extrusion for Ultimaker Original | 32 |
| E7. | Expert configurations | 34 |
| F. | Updating Cura | 35 |
| F1. | Updating Cura | 36 |
| F2. | Updating firmware of your Ultimaker | 37 |
| F3. | Add a new 3D printer (machine) | 38 |
| F4. | Preferences of Cura | 39 |
| F5. | Copy profile to clipboard | 40 |



WELCOME TO **CURA**



A1. Cura for your Ultimaker

The preferred software for your Ultimaker is Cura. This software package prepares your 3D model into instructions that your 3D printer requires to produce an object.

Cura is developed by Ultimaker to make 3D printing as easy and streamlined as possible. It contains everything you need to prepare a 3D file for printing. It is fully preconfigured to work on every Ultimaker model. Cura comes with a friendly setup program that helps you install the latest firmware as well as to calibrate your printer.

While you make decisions on the look and quality of your 3D object, Cura's slicer engine prepares your model in the background faster than ever. From there it is just seconds away from your printer and ready to become your physical object.

With the **Ultimaker 2** and Cura it's only possible to copy your print file to an **SD card** and print from it. The **USB port** on your Ultimaker 2 can be used for firmware updates and in the near future this gives a possibility for wireless printing. The **USB cable** that came with your Ultimaker 2 should only be used for firmware updates.

With the **Ultimaker Original** it is possible to print with **USB cable**, but we do not advise you to do that. It is less reliable and other processes on your computer influence the speed of printing. When available printing with the Ulticontroller is recommended.



A2. Latest upgrades and fixes

Almost every month we do a software update where we introduce new functionalities and improvements.

In the latest Cura 13.11.2

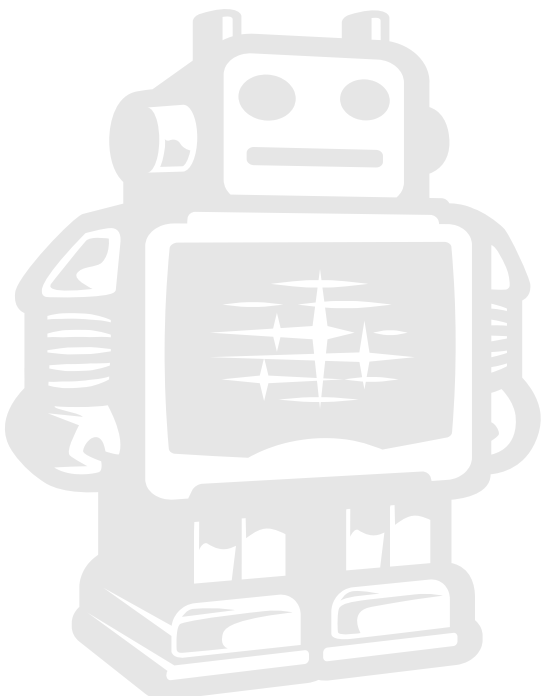
- * Adjusted the gantry height to 55mm for the Ultimaker, as 60mm was 3mm to high for the default setup with an V2 hot-end in the Ultimaker Original.
- * Added no-go zones for Ultimaker 2 glass clips, to prevent damage to the nozzles on the Ultimaker 2.
- * Added ooze-shield for dual-color printing
- * Added wipe tower for dual-extrusion
- * Made sure the Ultimaker Original bed leveling wizard can not be used on the Ultimaker 2, as this causes problems.

Ultimaker 2 Firmware update version: 13.11-2

- * Fixed Ultimaker 2 build volume offset so that you do not print off the glass plate.
- * Slightly tweaked the filament change procedure so there is less chance of a blob staying behind.
- * Slightly tweaked the SD-Card error problems, solving a rare case of SD-Card read errors.
- * Added LED settings to Tune menu, so you can tune down the LED lighting during printing.
- * Start heating the nozzles when the bed is nearing its final temperature, so the nozzles do not sit hot.
- * Make sure all commands are finished before starting a print or changing material. This could cause issues when you where too fast.



INSTALLING AND CONFIGURING **CURA**



B1. Compatible systems

Cura will run on the platforms listed below.



- Windows XP or newer



- Mac 10.6 (snow leopard) or newer



- Unix Ubuntu 12.10 or newer

Minimum required hardware

- Minimum of 512 MB of RAM
- Minimum of 200 MB of disk space
- Minimum a pentium 4 processor

Recommended hardware

- 2 GigaByte of RAM
- 500MB disk space
- Intel Core 2 - 2.0Ghz

Compatible file types

.STL

This file format is supported by almost any 3D software package and is the industry standard used for 3D printing

.OBJ

.DAE

.AMG



B2. Downloading and installing Cura

The preferred software for your **Ultimaker** is Cura from Ultimaker. This software package prepares your 3D model into instructions that your Ultimaker 2 requires to produce an object.

1. The Cura software package can be downloaded from the “**Our software**” section on our website **www.ultimaker.com**.

(direct link: **www.ultimaker.com/pages/our-software**)

2. Download the latest version of Cura for your operating system.

3. Open the installer and follow the directions to install the software.

4. After installing Cura, Start up Cura and go to the next page to configure the software to your 3D printer.



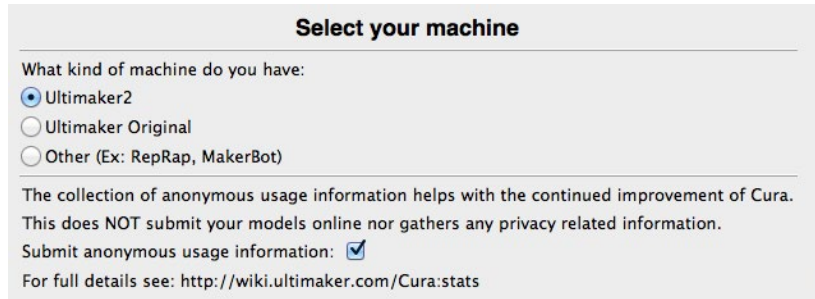
NOTE: On every kind of operating system the installation procedure of the software will work quite differently.



B3. Configuration wizard Ultimaker

1. Cura welcomes you first with the note: **"This wizard will help you in setting up Cura for your machine"** click [Next >] button to continue.

2. Then you get the following screen where you should select what kind of Ultimaker or other 3D printer you have.



Select your machine

What kind of machine do you have:

Ultimaker2
 Ultimaker Original
 Other (Ex: RepRap, MakerBot)

The collection of anonymous usage information helps with the continued improvement of Cura. This does NOT submit your models online nor gathers any privacy related information.

Submit anonymous usage information:

For full details see: <http://wiki.ultimaker.com/Cura:stats>

Cura 13.02 or newer can collect user statistics. These statistics are gathered to improve next version of Cura and possibly provide more features for Ultimaker and RepRap users. The collected information includes profile settings and machine types.

It does **NOT** collect usernames, models or any privacy sensitive information. Currently these stats are only collected and there is nothing done with it yet. We want to make these stats quite open for everyone to use as well as the option to share this information or not.

3. So please **check** or **uncheck** the box if you like to share the information or not.

4. If you selected the **Ultimaker 2** no additional setup is needed and you should see the following screen (image below). If you selected the **Ultimaker Original** you should follow the instructions on the next page (B4). If you selected anything else in this configuration wizard continue to page 12 (B5).



B4. Continue wizard for Ultimaker Original

When you selected the **Ultimaker Original** (the wooden lasercut version) you need to check the 'upgrades' you have or don't have on your Printer.

5. Follow the Instructions on the screen and make sure you select what came with or is upgraded on your Printer.

The default selection is suitable for a new Ultimaker Original.

6. If you are not sure you have the latest firmware make sure you choose; **Upgrade to Marlin Firmware.**

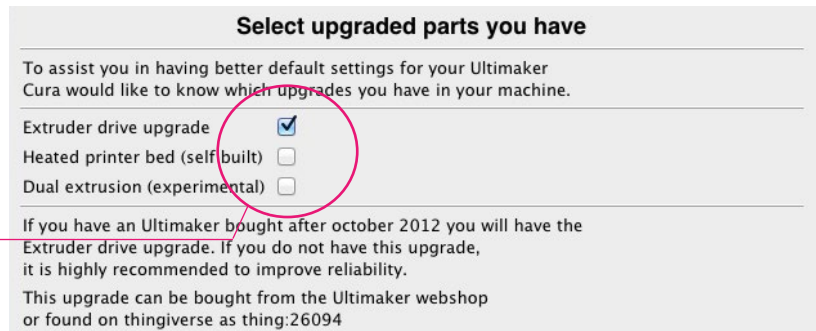
Make sure that the **USB cable** is connected.

7. Cura likes to do a checkup on you machine, with the **USB cable** connected you can **Run checks.**

You can also skip the checks if you know your machine is functional.

8. With USB cable still connected, the printhead in your Ultimaker will move itself to each corner and at the same time cura will ask you to **adjust the height** of the bed.

9. When you finished this step you should arrive on to Cura's main screen as shown in **step 4.**



Select upgraded parts you have

To assist you in having better default settings for your Ultimaker Cura would like to know which upgrades you have in your machine.

| | |
|---------------------------------|-------------------------------------|
| Extruder drive upgrade | <input checked="" type="checkbox"/> |
| Heated printer bed (self built) | <input type="checkbox"/> |
| Dual extrusion (experimental) | <input type="checkbox"/> |

If you have an Ultimaker bought after october 2012 you will have the Extruder drive upgrade. If you do not have this upgrade, it is highly recommended to improve reliability.
This upgrade can be bought from the Ultimaker webshop or found on thingiverse as thing:26094

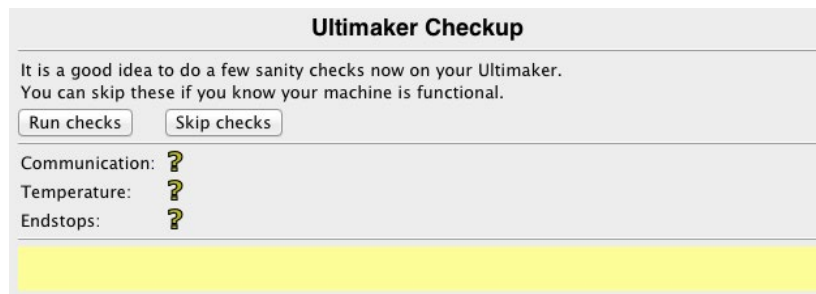


Upgrade Ultimaker Firmware

Firmware is the piece of software running directly on your 3D printer. This firmware controls the step motors, regulates the temperature and ultimately makes your printer work.

The firmware shipping with new Ultimakers works, but upgrades have been made to make better prints, and make calibration easier.

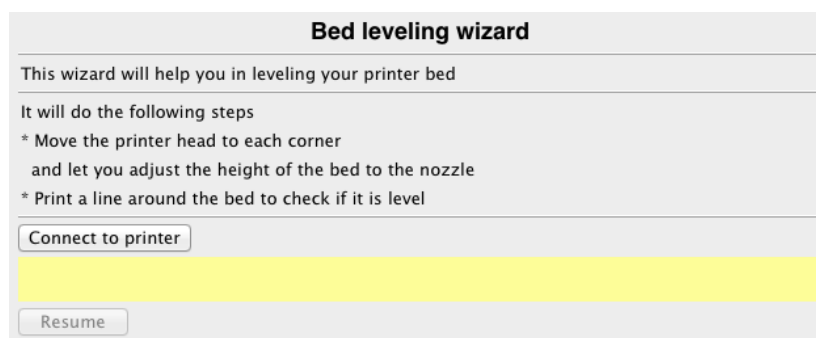
Cura requires these new features and thus your firmware will most likely need to be upgraded. You will get the chance to do so now.



Ultimaker Checkup

It is a good idea to do a few sanity checks now on your Ultimaker. You can skip these if you know your machine is functional.

Communication: ?
Temperature: ?
Endstops: ?



Bed leveling wizard

This wizard will help you in leveling your printer bed

It will do the following steps

- * Move the printer head to each corner and let you adjust the height of the bed to the nozzle
- * Print a line around the bed to check if it is level



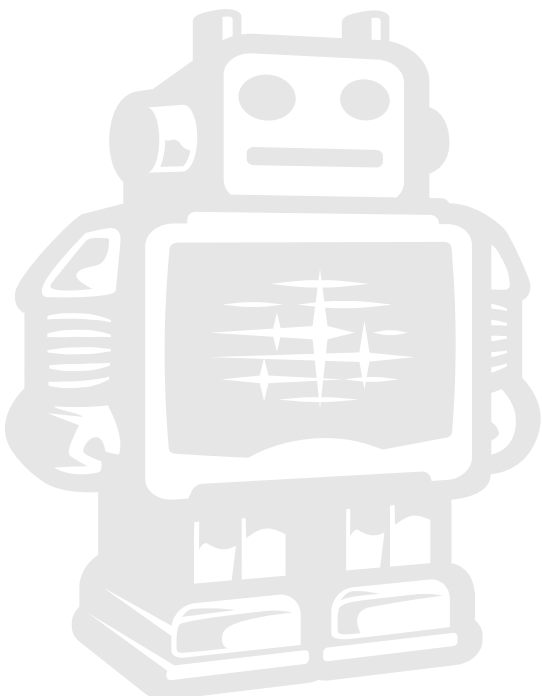
B5. Configuration wizard other 3D printers

When you selected the **Other** on machine selection, you see a list of other pre- defined machines though if you want to work with them, you might need to tweak them to get to their best performance.

You also have to set up a **custom profile** where tinkering and some hardware knowledge of your 3D printer is required. More about working with custom profiles in [chapter E](#) starting at [page 26](#).

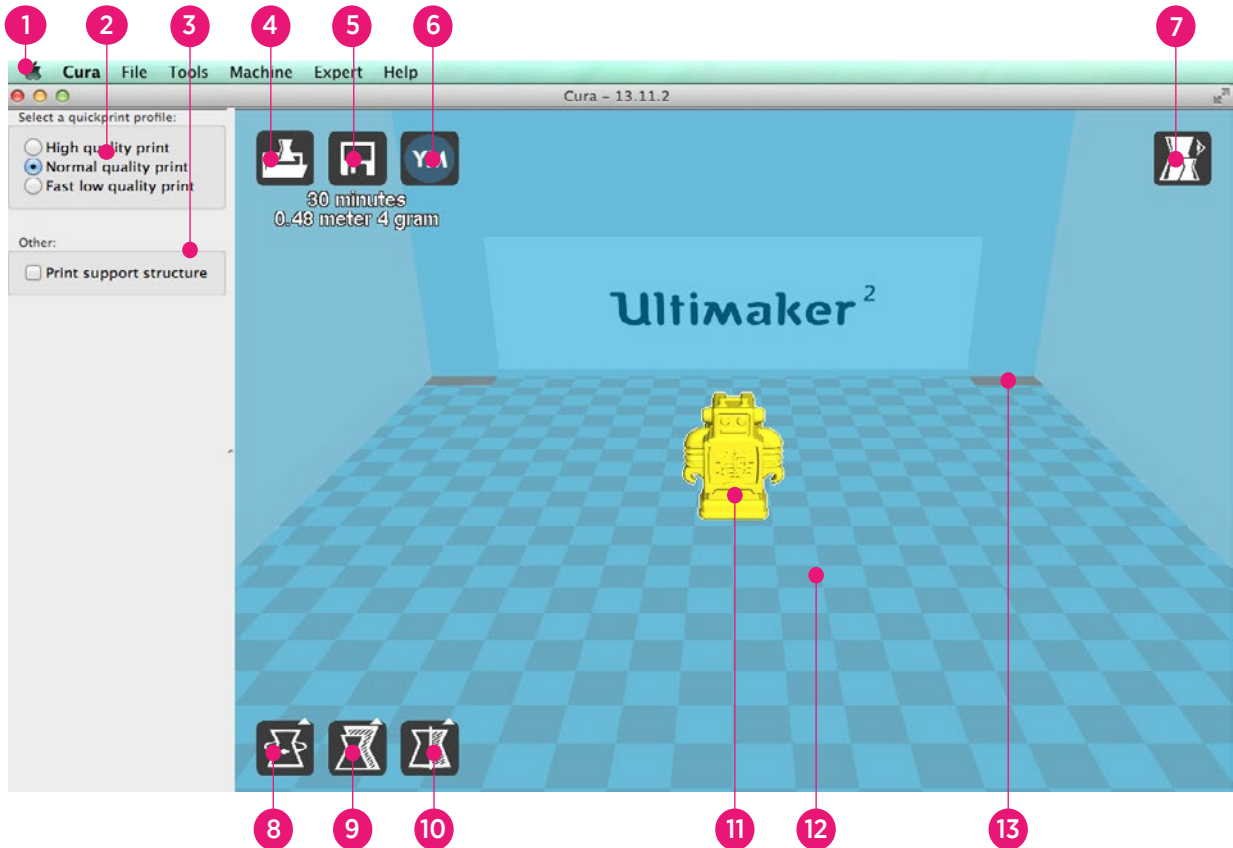


FIRST TIME STARTING UP **CURA**



C1. Cura software interface

This is the main 'quick print' screen of Cura. Here you can load and adjust 3D models, choose print profiles and upload files to the YouMagine library. Below you can see a quick overview about all the items in the interface. Later on in this chapter they will be explained in more depth



- 1. Menu bar** In this bar you can change settings, machines and profiles.
- 2.** Make a selection in 3 different **quick print profiles**.
- 3.** The option to print with **support structure**.
- 4.** A button which gives you the opportunity to **load objects**.
- 5.** With this button you can **save prepared files** to your Ultimaker SD-card.
- 6.** Through this button you can share 3D files on **YouMagine.com**.
- 7.** A prepared model can be **viewed in other modes** to check it's printpath.
- 8.** The option to **change the rotation** of the object you like to print.
- 9.** The option to **change the Scale** of the object you like to print.
- 10.** The options to **Mirror the model** you like to print.
- 11.** The model you have loaded through the load file button.
- 12.** This is a visualisation of the **print area** of your Ultimaker.
- 13.** (ultimaker 2) The grey squares in the build area are the **no go zones**. In your Ultimaker 2 these are the metal clips were you can't print.



C2. Print with quick print profile

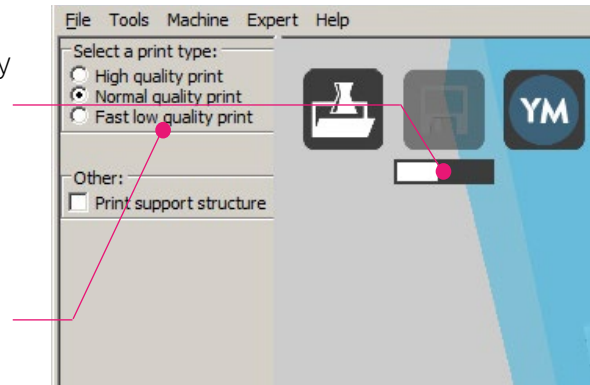
Before going into this step, make sure you have a working printer, if not please calibrate your printer. Need help? check the user manual of the Ultimaker 2 or Ultimaker Original on our [support page](#).

1. Let's start by clicking on the **Load** button in Cura and search for a compatible file.

2. You might notice the **progress bar**, when you have loaded a file into Cura, cura is automatically making the 3D model print ready for you.

3. In the meantime you can adjust settings and **select a print type**.

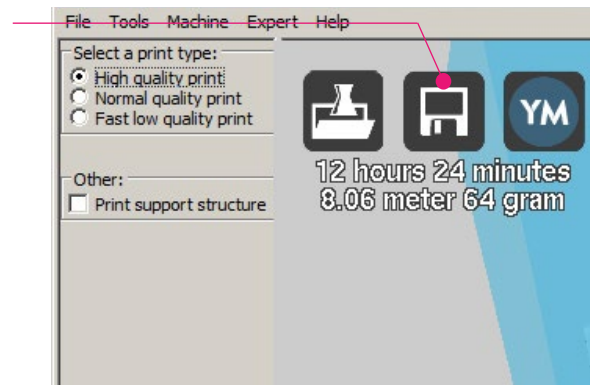
- High quality prints with layers of **0.06 mm**
- Normal quality prints with layers of **0.1 mm**
- Low quality prints with layers of **0.2 mm**



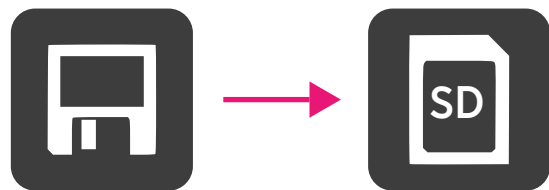
4. When the 3D model is prepared, the **Save toolpath button shows up and gives you the option to** save the prepared model in a directory.

Underneath the button Cura gives you an indication about your print on

- Estimated Print Time
- Amount of material required
- And the weight of your 3D print



5. After you inserted the included SD-card into your computer, Cura changes the **Save toolpath** Button into the **Toolpath to SD** Button.



6. Just after you choose for the **Toolpath to SD** button you will see the same progress bar but now it saves the file on the SD card.

7. When finished saving It will give you the notification that **your file has been saved**.

8. Before taking out the SD-card make sure you always choose the **safely eject** button in Cura.



C3. Basic orientation

The following mouse actions are used to work, navigate and view the 3D model. You can use those orientation movements in the blue 3D interface.



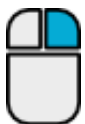
Leftmouse button

Select objects. Hold and move the mouse to drag object on the 3D print area.



Scrollwheel button

Use the scroll wheel to zoom in or out.



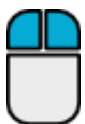
Rightmouse button

Hold and move the mouse to rotate the viewpoint around the 3D model.



Rightmouse button + Shift

Hold and move the mouse to pan the 3D view



Right and left mouse button

Hold and move the mouse to zoom

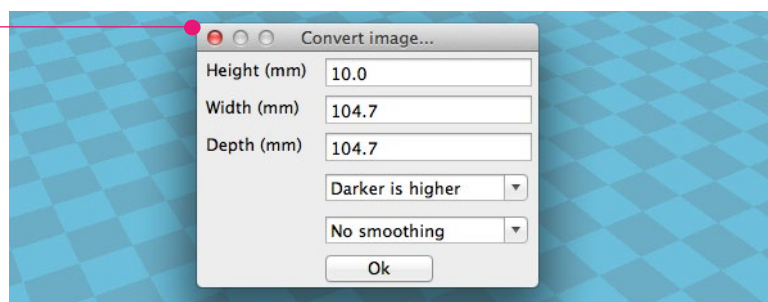
Loading a 3D model

The left icon on the top of the 3D interface is the **Load file** button. Through this button you can search in your files to the following 3D file extensions: **.stl .obj .dae .amf**



Loading images

In Cura you can also **load images and convert** them to a 3D model. In the converting settings you can choose several option to shape a 3D model. You can load the following file extensions; **.jpg .bmp .png**.

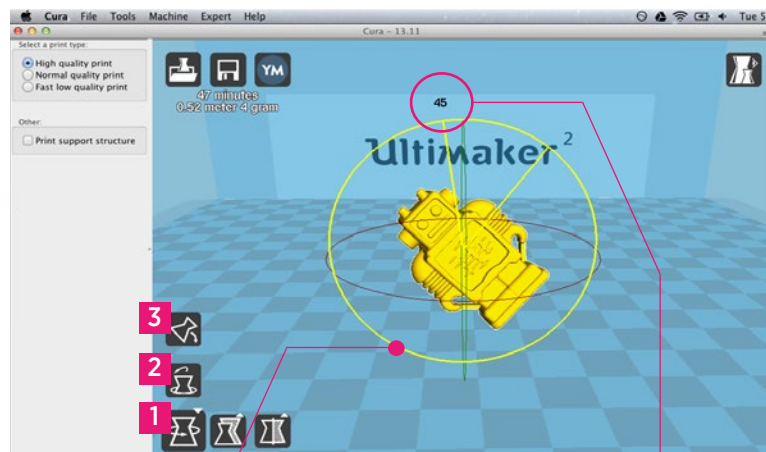


C4. Adjusting your model

When you have loaded your model you can change the size or orientation, the following steps explain you the basic on how you can adjust you model on how you want it to be.

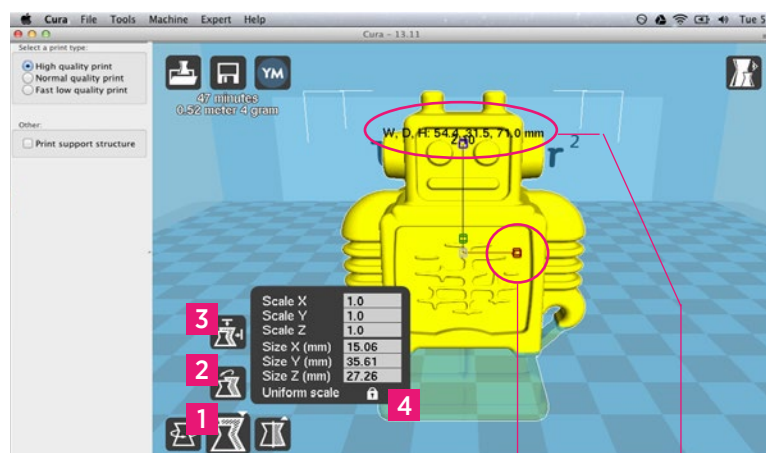
Rotating your object

The left icon on the bottom of the 3D interface is the **rotation button [1]**. When you select and click it, you can rotate the model over it's XYZ axis. You see also more functions when you have selected the rotation button. the top icon's action, **lays your model flat [3]** on the surface, to make sure your model is well attached to the build plate while printing. The second icon **resets [2]** the 3D models rotation. By click-select one of the 3 **orientation circles you adjust the rotation** of the model. The **rotation degree** appears in the number around the model. When rotating and clicking shift you rotate per degree otherwise it's per 15 degrees.



Scaling your object

The second left icon on the bottom of the 3D interface is the **scaling button [1]**. When you select and click it, you can scale the model in the XYZ direction. The top icon that appears has the function to **scale your object to max size [3]** for your printer. The icon above **resets [2]** the 3D models rotation.



By **unlocking [4]** the lock you have the possibility to scale the object in each particular dimension.

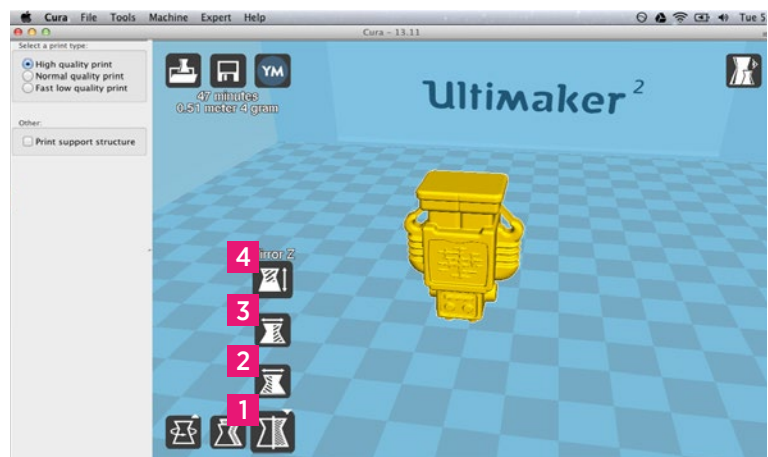
By select and slide one of the 3 **scaling squares** you adjust the uniform scale of the model. The **amount of scaling and size dimensions** appears in the number next to the model.



Mirror your object

The third left icon on the bottom of the 3D interface is the **mirror button [1]**. When you select on the mirroring functions you can flip you model with the other buttons above [1] in the:

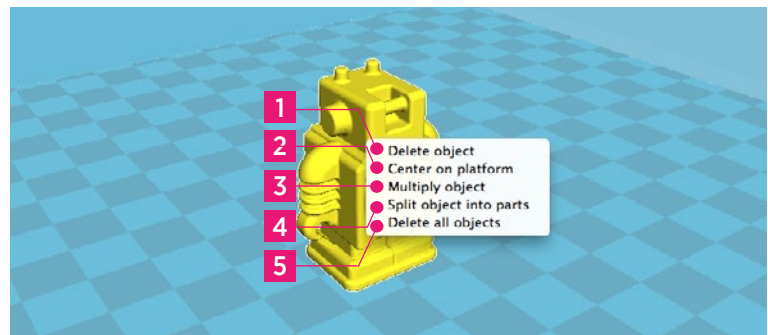
- X dimension [2]
- Y dimension [3]
- Z dimension [4]



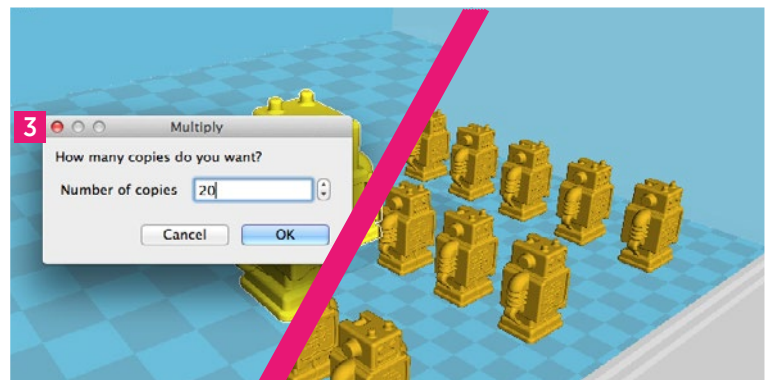
Right mouse click on your model.

When you select your model and give a right mouse click on it you get some more functions.

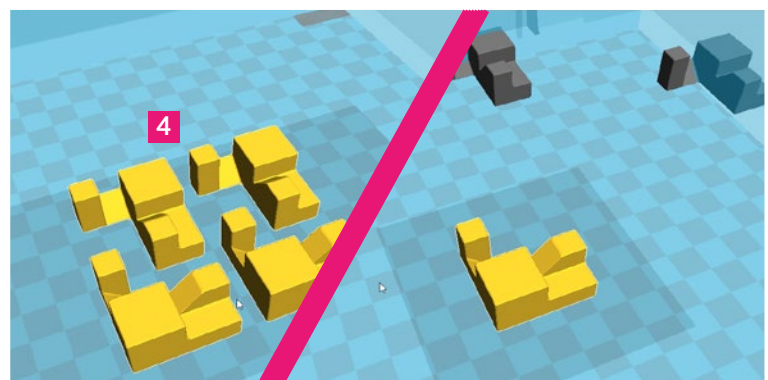
With **Delete object [1] [5]** you remove your model(s) from cura. **Center on platform [2]** positions your model in the center of the build plate.



With **multiply object [3]** you can decide to make more of the selected object. If you number is to much for the amount of space on your build volume cura will place it automatically it on maximum quantity.



There is also a function **Split object into parts [4]**, This function is used to split an model file which contains multiple parts into separate parts to be printed one at a time. For example, if you downloaded an STL file that contains 4 parts of a puzzle, you can split it into 4 separate parts for printing. For now it works very slowly and you might need some patience to split objects, for now we advice your to split parts in your 3D design program.



C5. Were Ultimaker 2 and Ultimaker Original differ in Cura

With the development of the Ultimaker 2 we decided that the print should know what kind of material it has. That's why when you insert material in your Ultimaker 2 that you also should tell what material it is going to use. The printer adjust its settings to the material requirements, in this way printfiles (gcode's) became material independent and can be easier shared with others. That why you also had to make a decision earlier in the configuration. There is also a slight difference in the Cura interface and user flow which we will explain on this page.

Ultimaker 2

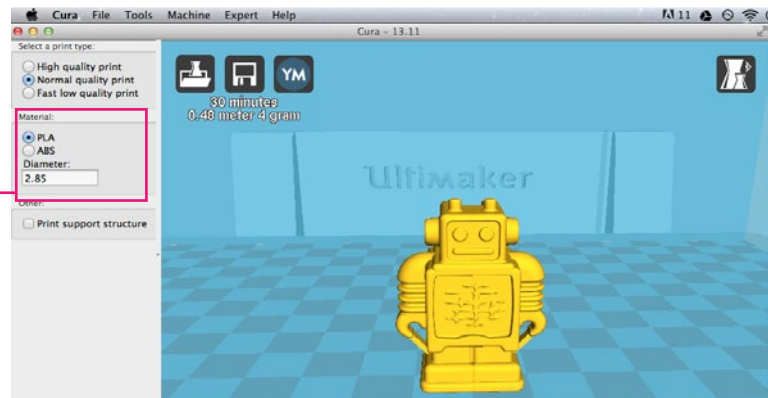
You can recognize and see that you have configured Cura to Ultimaker 2 if the print bed in the visual interface shows the **Ultimaker 2 logo**.



Ultimaker Original

You can see the difference in the logo in the blue area.

More importantly you can find this back in its **material functionality**. Where Cura asks you the which material you are going to use and what thickness it has.



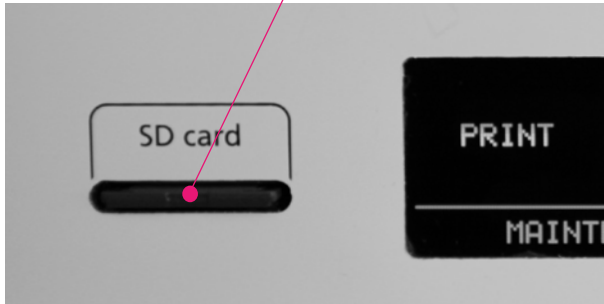
You will see more functions in those materials when you put Cura in Full settings ([chapter E](#)).

Note: most of the images being used are setup for the Ultimaker 2, so keep in mind that the images in this manual may not be the same as the one in your Interface. We will mention where you need to do take some extra action or where it differs.



C6. From SD-card to print your file

1. After saving the file and safely ejecting your SD-card from your computer, it is time to insert it in the **SD-card Slot** of your Ultimaker.



Ultimaker 2

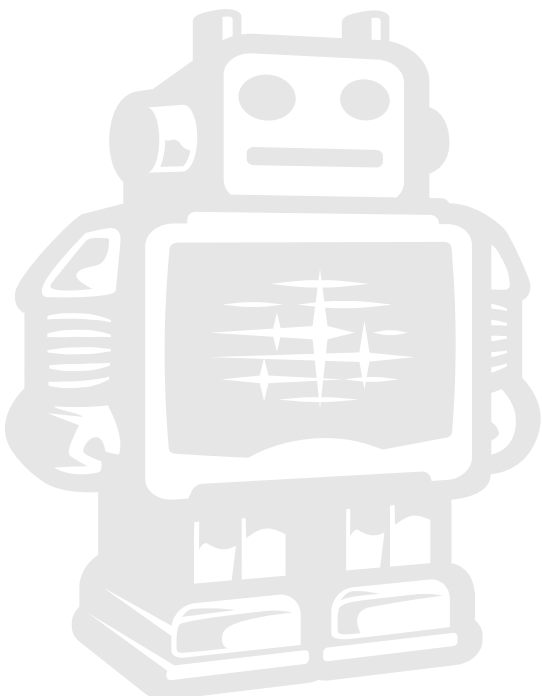


Ultimaker Original

2. By rotating the button and selecting **[PRINT]** (Ultimaker 2) or **[Card Menu]** (Ultimaker Original), you can now choose your desired print model from the SD-card.



YouMagine.com and sharing with **CURA**



D1. From YouMagine to load file in Cura

Now that you are familiar with Cura we continue to explain how you can download a 3D file from **YouMagine** and load this into Cura. YouMagine is an online community for everyone who's eager to explore the World of 3D printing. Want to work with other users and learn from each other? Go right ahead: YouMagine is about sharing and collaboration. Needless to say, everything you upload will remain your intellectual property which we encourage you to share.

1. Open your browser and go to **www.youmagine.com**

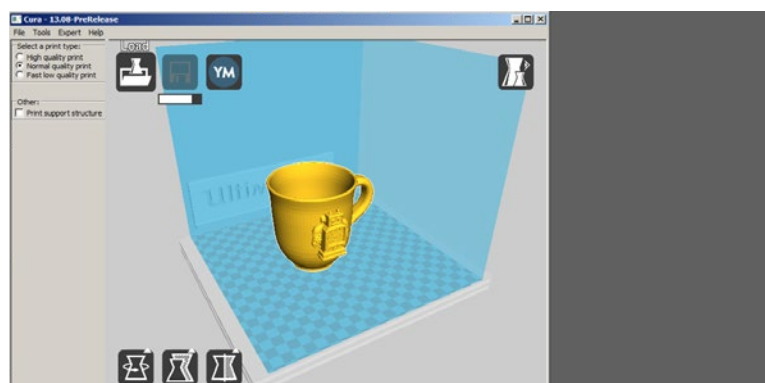
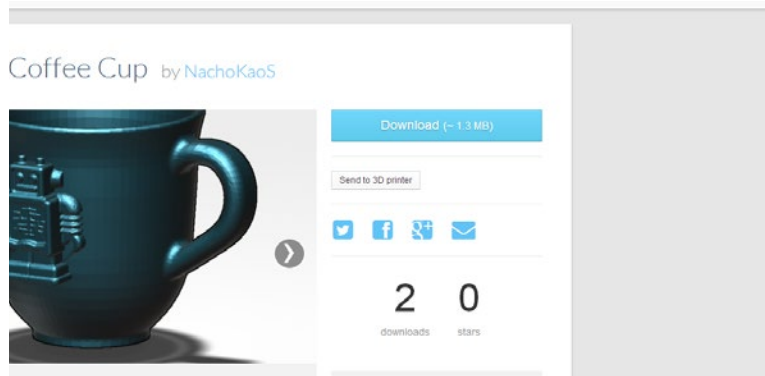
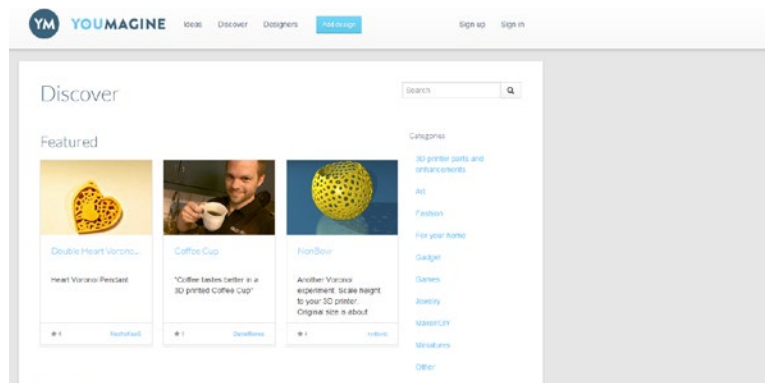
2. Use the search field at the menu bar next to the magnifying glass to find a model of your interest. Let's search for example "coffee cup" and 'Enter'.

3. Choose a design you like.

4. The following page will provide you with a 'Download' button where you can get your .stl file which can be used to print a 3D model.

5. The .stl file can be loaded into the Cura software, which will be explained more fully in the next chapter.

Tip: If you've made a 3D design yourself, you can contribute back to the YouMagine community, this is explained in the next step.



NOTE: The screenshots may not look and work exactly the same because YouMagine is in continuous development.



D2. Upload from Cura to YouMagine.com

Cura also gives you an opportunity to directly upload and easily to YouMagine. We would like to explain this to you in the following steps.

1. First make sure you have your 3D model that you would like to upload. Open in Cura, there you have to click the **YouMagine button**.

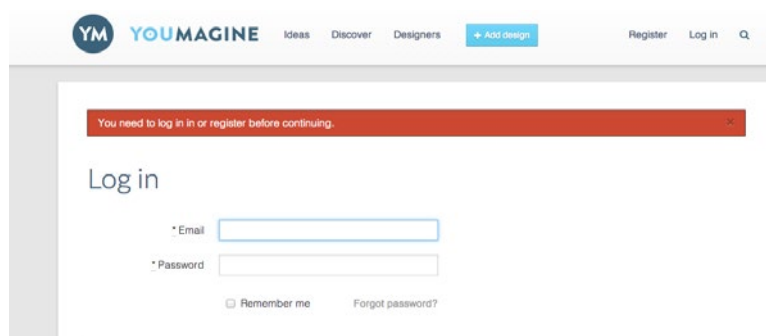


2. While this is the first time you want to upload to YouMagine, this will be your first screen.

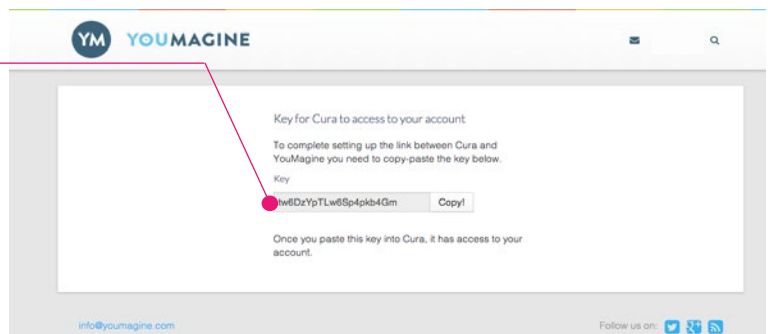


3. Choose [Request authorization from YouMagine], your browser will now open and try to login to your YouMagine account

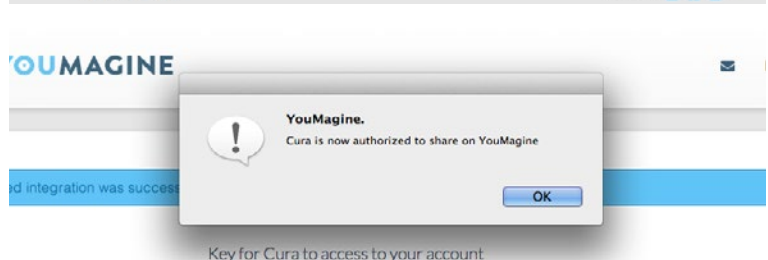
4. If you don't have an account or you are not logged in you see the following screen. Make sure you register or log in with a YouMagine account.



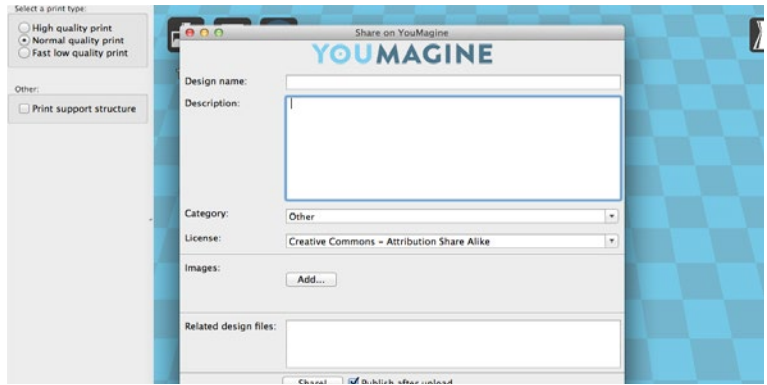
5. Copy the Key and Paste it in the popup in Cura.



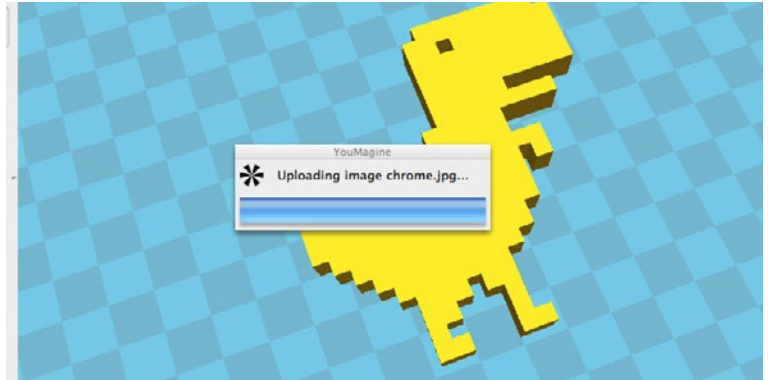
6. Cura will now check if it is connected to YouMagine.



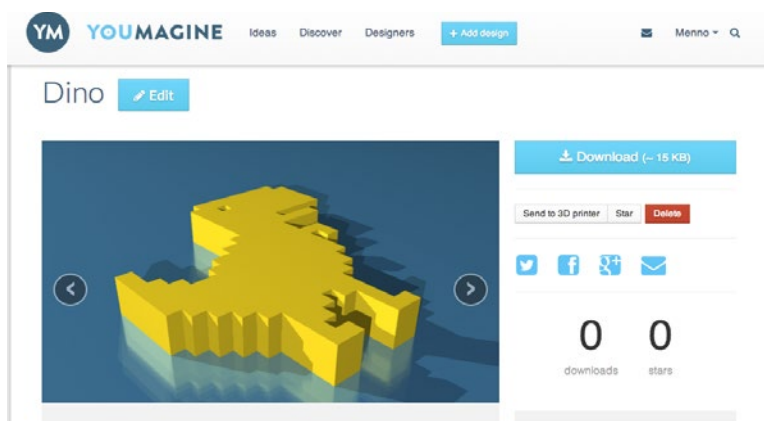
7. Now you see a screen where you can put information about your design, try fill in the entire form, then click the [Share!] button.



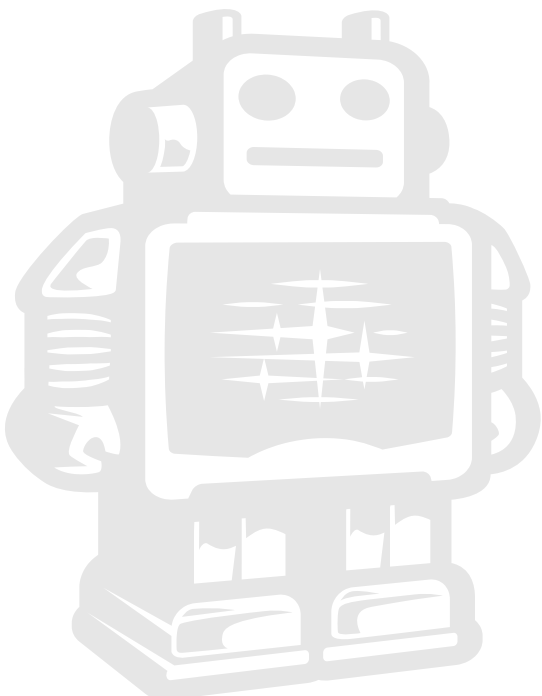
8. When you are logged in you will see the following screen which gives Cura acces to your YouMagine account.



9. From now on, Cura will allow you to automatically upload your latest designs to YouMagine.



THE USE OF **FULL SETTINGS** AND **DUAL EXTRUSION**



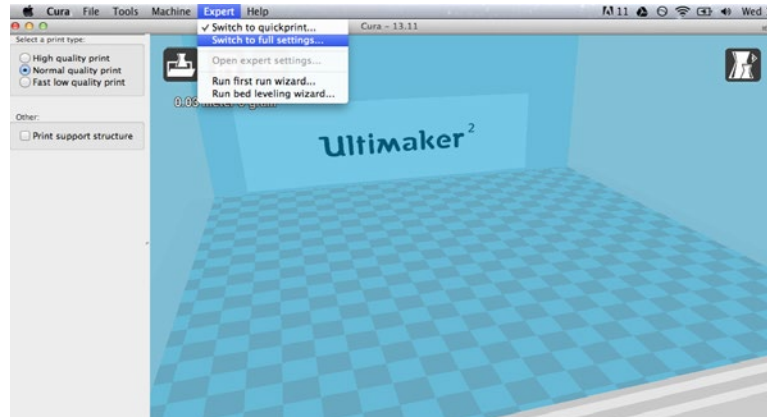
E1. Switch and use of full settings

With Cura we aim for a very simple and friendly experience for our users. The more experienced you become with 3D printing and our software the more specific you might want to work in the production of a 3D print. More specific settings can also be managed through a full setting function we included in the software. We will explain you this in the following steps.

1. First go in the menu bar to **Expert** and select **Switch to Full settings**.

Note: When your Cura is configured to Ultimaker Original you have a fourth tab, start/end-Gcode, where you can change the begin and end process of your printfiles.

2. You can see that you have more features in 3 different tabs: **Basic, Advanced and Plugins**.



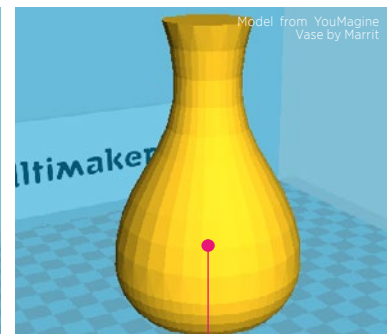
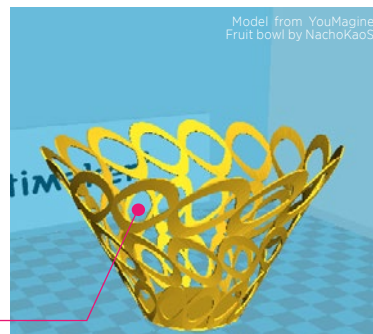
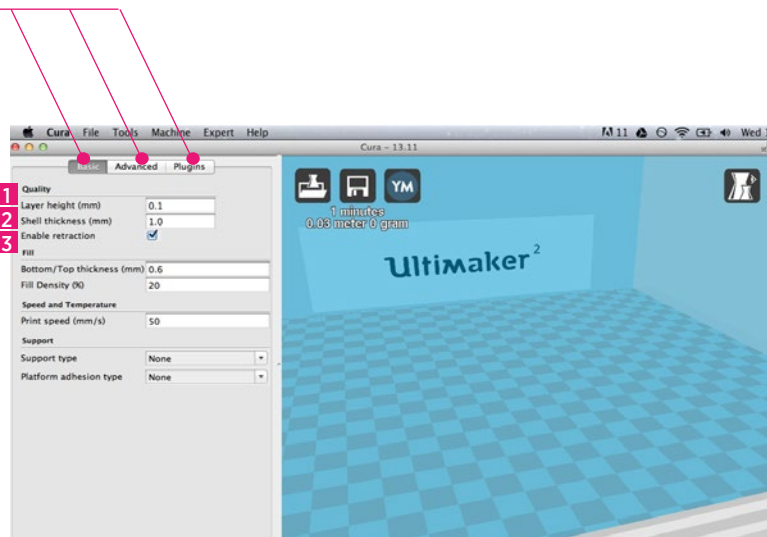
Basic settings: Quality

The height of each layer [1]. For print quality and printing time this is the most important setting. Usual settings are 0.2mm for a low quality print. 0.1mm for a medium quality print. 0.06mm for a high quality print. And 0.02mm for an ultra-high quality print.

The thickness of the side shells [2], when printing a simple cube, this is the thickness of the side walls. Increasing it improves the strength of the part.

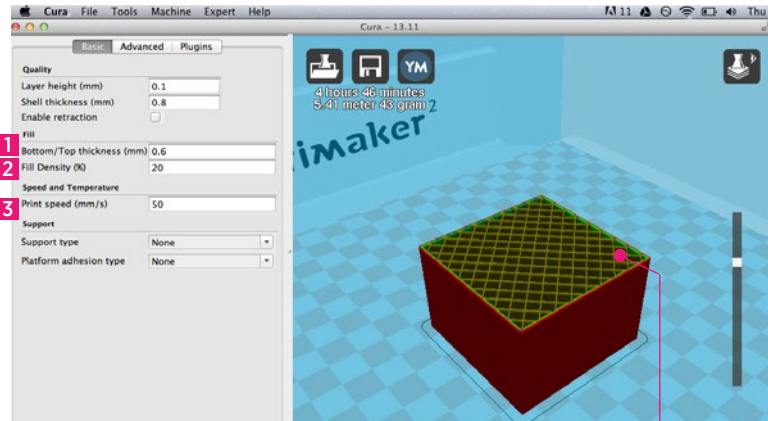
Retraction [3] is pulling the filament back when moving over

a gap in the print. This reduces the amount of thin lines between printed parts. These thin lines are called strings. Retraction is usually always enabled, unless you want to print faster or are printing with a material that does not allow retraction. **Some models don't require retraction**, this vase for example, because there are no gaps.



Basic settings: Fill

The bottom/top thickness [1] is the outer shell thickness on the top and bottom. For example, when printing a simple cube, this is the bottom square and top square thickness that are put down. Increasing this will make a stronger part, and depending on your model, it will make for better solid tops.



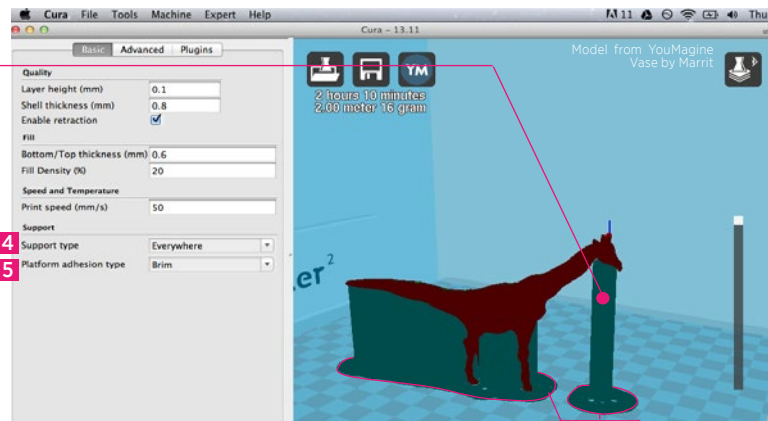
Cura fills [2] the internal parts of your model with a structure. This grid is made for strength and to support the top layers. The amount of infill you want is influenced by this setting. More **infill produces stronger parts that take longer to print**. If strength is not a requirement then this setting could be put on 5% for a low density infill that can still support the upper layers.

Basic settings: Print speed [3]

Print speed sets the speed at which the print is put down. The default of 50mm per second is a bit low for an Ultimaker. But this is a safe starting point. People have printed up to speeds of 120mm per second. But this requires a well calibrated and tuned machine.

Basic settings: Support

Supports are **structures printed below the print object to support** parts that otherwise would be unprintable. There are 2 options, support structures [4] that need to touch the build platform, or support structures that can also touch the top of your model.



The platform adhesion type [5]

is a setting to help the printed object stick on the printer bed. Large flat objects might get lose from the printer bed because of an effect called **warping** (**curled up corners in the print**). There is the option to use a raft, which is a thick grid under the object which scars the bottom of your print. Or **a brim**, which are lines around the bottom of your object and because of the larger area the corners are kept down. Brim usually gives the best results as it does not scar the object. But it requires more space on the printer bed.



E2. Advanced settings

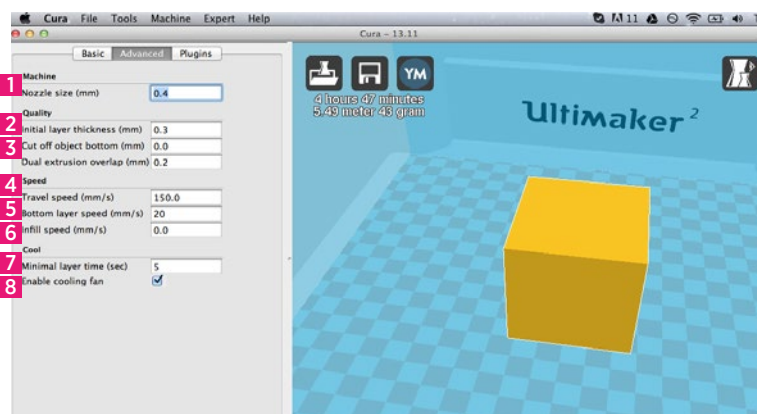
Advanced settings are settings you usually only change once because you have special needs that do not match the defaults.

Nozzle size [1]: The size of the hole in your nozzle. The Ultimaker comes with a 0.4mm nozzle by default. Some people drill the nozzle to 0.6 or 0.8mm for faster printing at lower quality.

Initial layer thickness [2]: The thickness of the first layer. This first layer is set by 0.3mm by default. A 0.3mm layer gives a thick bottom layer which is easy to stick to the platform and allows for variation in the platform.

Cut off bottom [3]: Cut the bottom of the model, this effectively sinks the object into the printer bed. If your object does not have a lot of contact area with the printer bed then this feature could help you.

Travel speed [4]: The speed at which the printhead moves when it is not printing. The default is set on 150mm/s. But a well calibrated and oiled Ultimaker can go faster and up to 300mm/s. It is not uncommon for a printer to achieve 200mm/s or 250mm/s travel speed. But if you are seeing shifts in your print then the travel speed might be the cause.



Bottom layer speed [5]: The speed at which the print head moves while it is laying down the first layer. This is done to make the print stick easier.

Infill Speed [6]: The speed at which infill lines are printed. If set to zero then same speed is used as for the rest of the print. A slight loss in outer quality can be expected if you use this to print a fast infill due to changes in nozzle pressure when switching between outside and infill parts.

Minimal layer time [7]: The minimal time spend on printing a single layer. If a layer takes less time to print then this configured time, then the layer is slowed down. This ensures that a layer is cooled down and solid enough before the next one is put on top.

Enable cooling fan [8]: The cooling fan is usually enabled and greatly improves print quality for PLA. For some other materials you might not want to use the cooling fan at all and this setting will disable it.

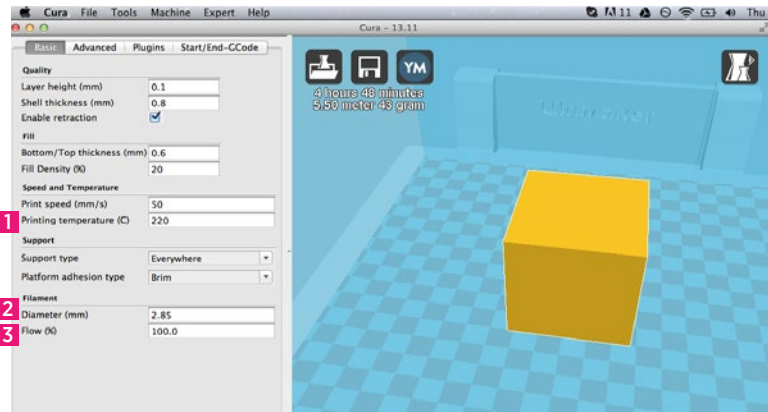


E3. Extra full settings Ultimaker Original

As earlier mentioned, with the Ultimaker Original selected in Cura you have some extra functions that you can tune. With these settings you can take control on the material temperature and the diameter and flow of the filament.

Basic settings: Print temperature and Filament

The print temperature [1] : is the temperature at which you print. This setting has a lot of impact on the print. The default is set on 220C, which is a bit high for PLA. For PLA you can go down to 190C to reduce the amount of strings on the print. But if you want to print faster you might need to increase the temperature above the 220 degree.



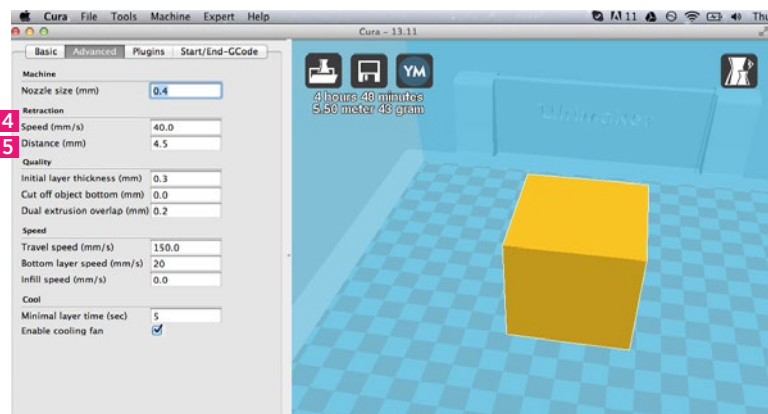
filament has an average of 2.89mm thickness.

The filament diameter [2] : is the diameter of your filament. Accurate measurement of your filament gives better quality prints. This needs to be known up to 2 decimals. Using digital calipers to measure your filament improves results. Ultimaker

The filament flow [3] : is a correction factor to make extrusion higher or lower than usual. Some systems or materials require a correction next to the usual diameter setting. This flow adjustment can be used for this.

Advanced settings: Retraction

Retraction speed [4] : The speed at which the filament is pulled back when the printerhead needs to move over holes.



Retraction distance [5]: The amount of mm the filament is pulled back when a retraction happens. 4.5mm gives good results on almost all Ultimakers with PLA. Other materials might need different retraction settings.

Note: At the Ultimaker 2 this is a fine tuned setting that you don't need to tune in Cura.

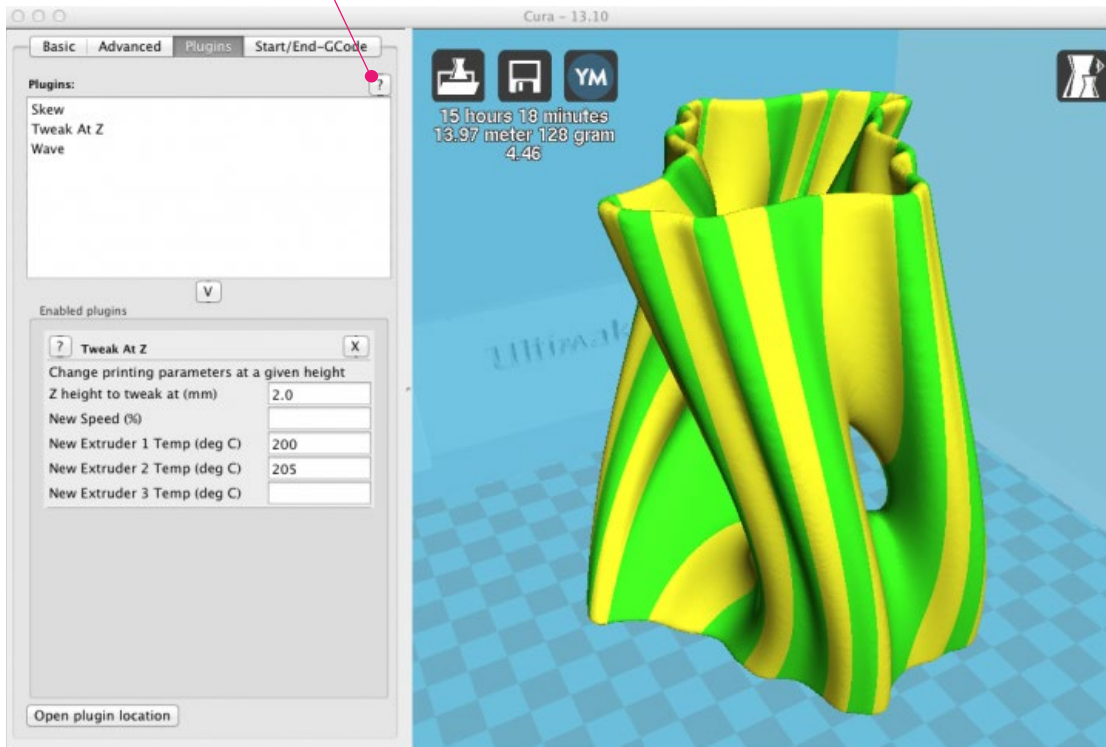


E4. Cura plugins

Since Cura version 12.11 there is support for plugins. This enables people to easily include their own features, without having to modify the source code of Cura or the slicer. Plugins are unavailable in quick print mode, you need to have some experience. If you want to use it, click on the [Full Settings] mode under [expert] in the menu bar at the top.

Check this [link/button](http://wiki.ultimaker.com/Category:CuraPlugin) for the plugins:

<http://wiki.ultimaker.com/Category:CuraPlugin>



In the screenshot above you see a list of plugins (e.g. Skew, Tweak at Z and Wave). These can be enabled by clicking on the arrow down button. The plugin will appear in the Enabled plugins box. There you can configure the plugin.

Check on this link for how to write a plugin:

http://wiki.ultimaker.com/How_to_write_a_Cura_plugin



E5. Start/End-GCode for Ultimaker Original

What is Gcode

GCode is the generic name for a control language for CNC (or Reprap) machines. It is a way for you to tell the machine to move to various points at a desired speed, control the spindle speed, turn on and off various coolants, and all sorts of other things. It is fairly standard, and is a useful tool.

More about G-code: <http://replicat.org/primer>

Start/End-Gcode

The start and end gcode are the startup and end procedure of the print. These pieces of code influence the startup procedure and can be customized. By default the printer is heated up, homed to the corner, and the head is primed. Editing this requires knowledge of GCode.



E6. Dual extrusion for Ultimaker Original

The dual extrusion KIT is still experimental, which means tinkering for the best result is needed. At the moment our slicer Cura does not support features recommended for PVA, like 'wipe'. However, you can experiment with PVA in the dual extrusion KIT by using another slicer program that does support it. Printing in dual color is supported. Assembly manual can be found here.

http://wiki.ultimaker.com/Dual_Extrusion

When you are finished with installing the hardware part there are a couple of steps in the software Cura that need to be taken off before you can really start printing with your dual extrusion kit.

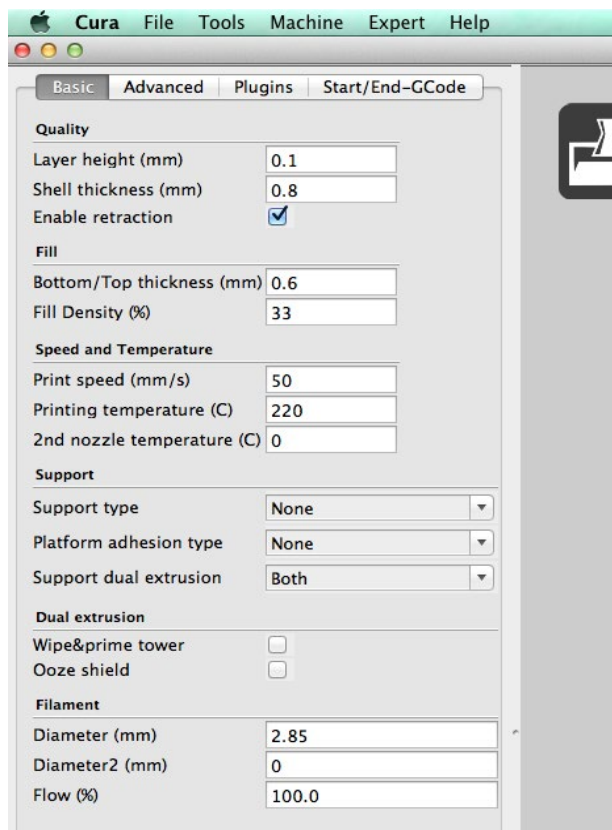
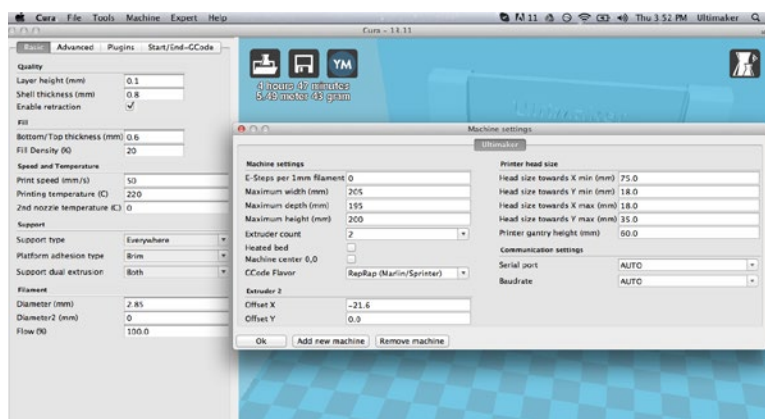
1. start Cura, go to File > Preferences and set the 'Extruder count' on 2. You might have to restart Cura before it will actually take this setting.

2. Next, change the setting in the Preferences panel to the ones shown below (click the picture to enlarge).

If your Dual extrusion is built perfectly, the offsets should be X= 0.0 and Y= 21.6 However this being a DIY Kit, make sure you play with the settings until your second material sticks nicely icely to your first material.

3. In the advanced tab you can find a setting called Dual Extrusion Overlap, this has default setting of 0.2 mm. With this setting you can control how much the colors should overlap. This assures a good connection in between two materials.

Now the settings in Cura are done and you can start preparing your first dual extrusion print!



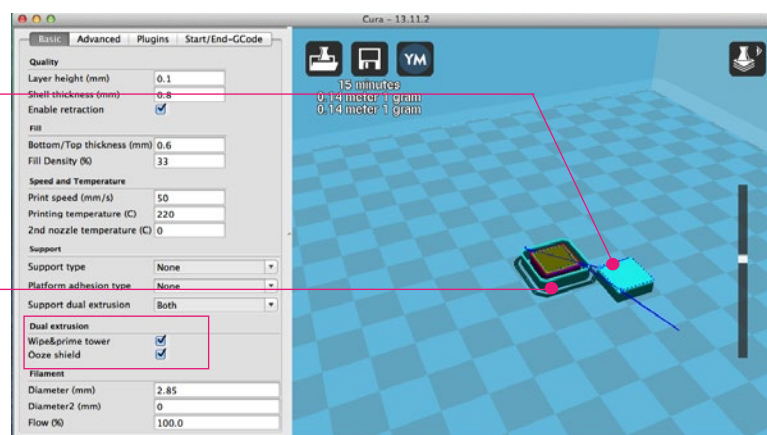
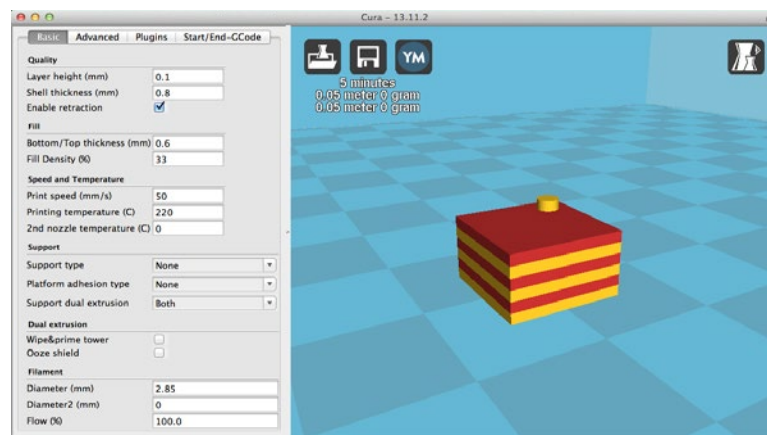
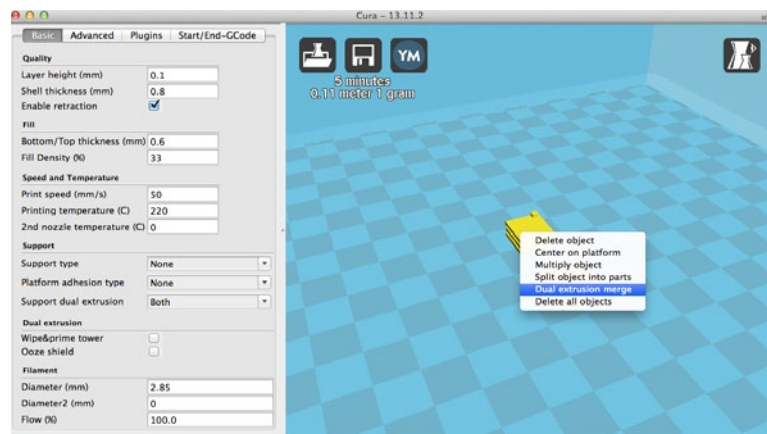
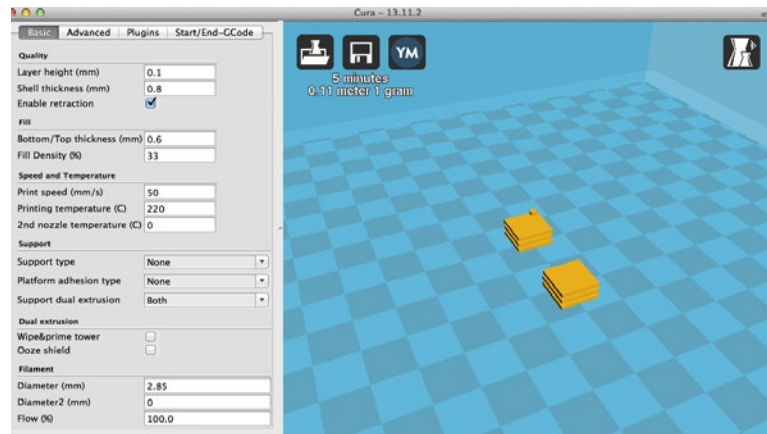
4. Load the 2 models you want to use for your print, either simultaneously or alternating. They will both be placed on the build platform.

5. If you click on the **model and right-mouse click the second model** you get the option: dual extrusion merge. This will merge both models into one model for printing.

6. The model will be dual colored; in this case yellow equals hot end 1 and red equals hot end 2, since this is what is set in the [Preferences panel](#). You can change the configuration by the order in which you click during the merge.

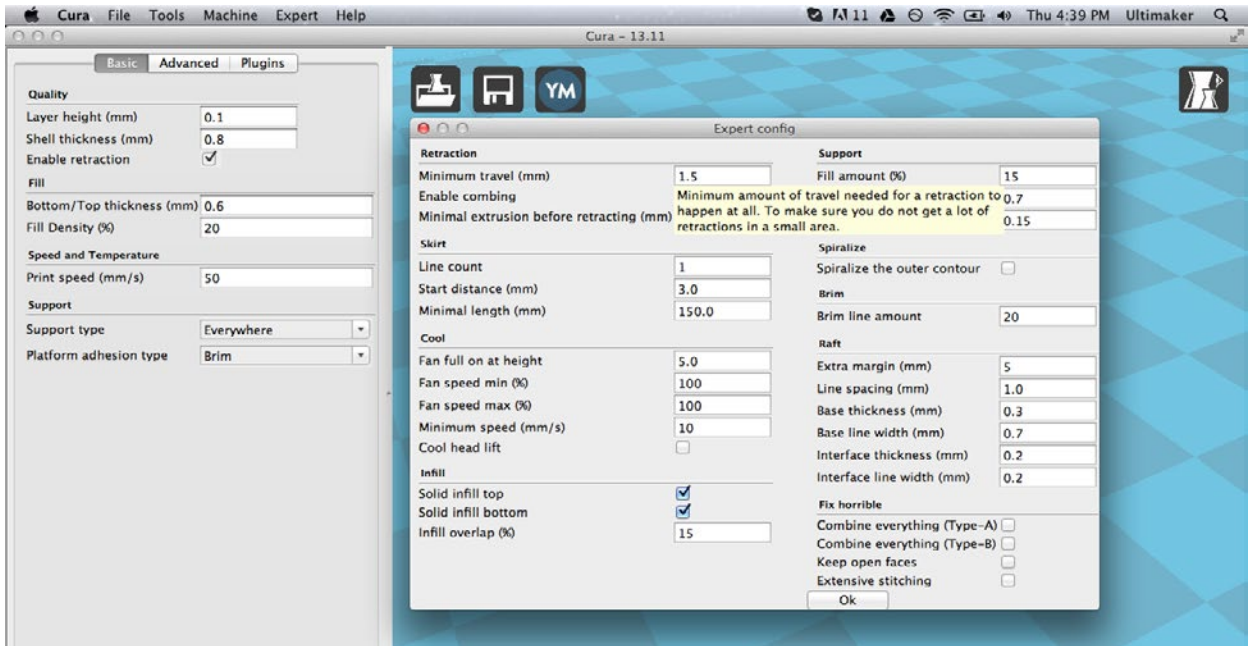
Now you've taken all the steps and are ready to start printing with your new dual extrusion kit! If you have created some nice dual extrusion print models feel free to share them on our platform YouMagine, as we are very curious to see what great stuff you will create!

Cura13.11.2 included **new function** for dual extrusion, wipetower and ooze shield. **Wipetower** is a small tower next to your print where the nozzle wipes itself clean when switching nozzles. **The ooze shield** does the same and improves this function but with some models you don't want it because you can't break it away. Know that both functions downgrade the print speed.



E7. Expert configurations

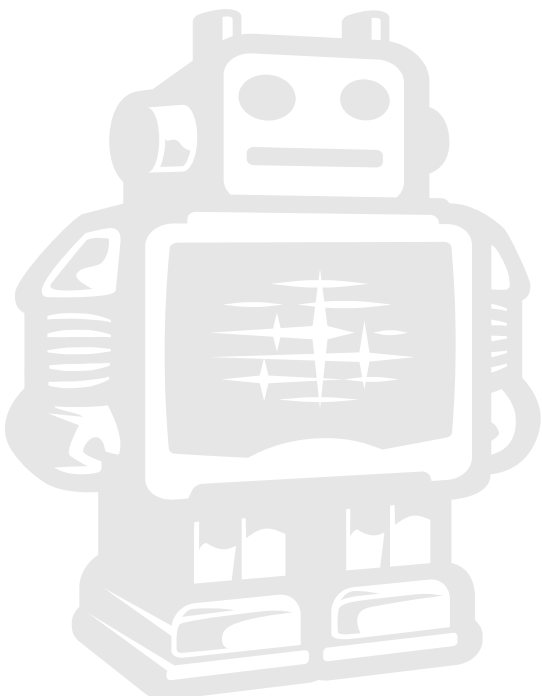
You can check the information about the expert configurations by going over all the features. A tooltip will appear with some small explanation. The part will be further explained in a next version of the User manual.



You can use the shortcut key CTRL+E or Command-E (OSX) to open the expert configuration menu.



MACHINE SETTINGS AND UPDATES



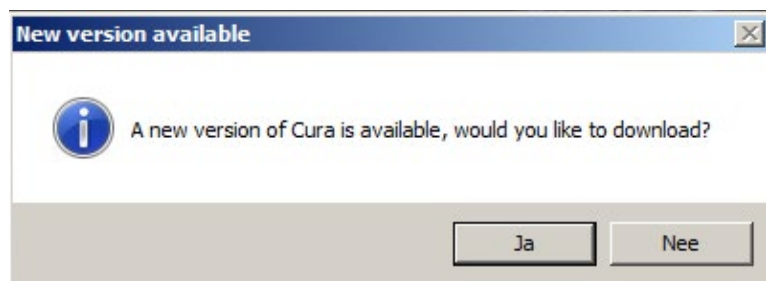
F1. Updating Cura

Our R&D team is continue improving and updating Cura. We always aim to make the software more user friendly and simultaneously with new function all in order to make better and more succesfull 3D prints. Almost every month we update the software and as a user of Cura you will get a notification of that.

1. If you startup Cura and it gives the following notification select Yes to update. Your browser will open a link to the latest software and starts downloading right away.



2. When you finished the installation wizard and start up Cura, it takes over the machine settings you had but with improved and new functionalities of the latest Cura version.

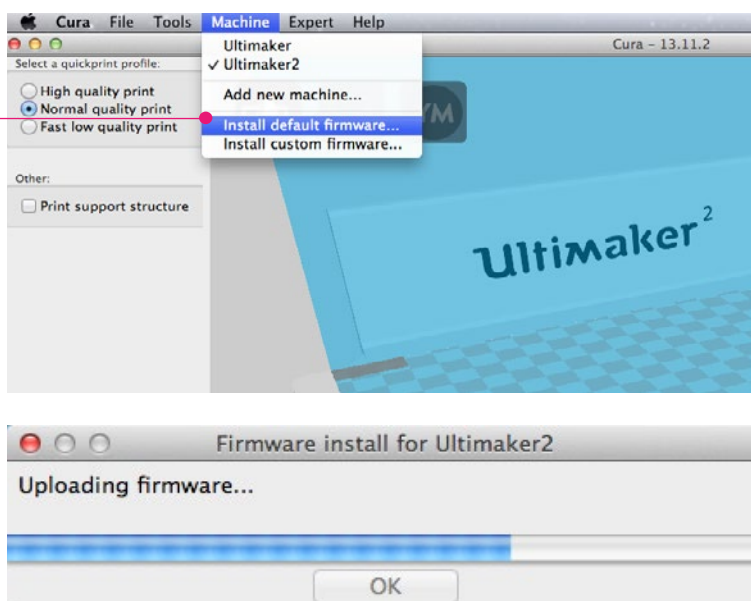


F2. Updating firmware of your Ultimaker

With the development of the Ultimaker Original we knew that the hardware was very reliable and could print with a very high resolution. Besides that it still took the team a few months to finetune the control of the electronic components in combination with smarter software. The same applies for the Ultimaker 2 as we keep on tuning settings the machine will become even better in the future. When there is a new firmware version this will be communicated through a blogpost or you will get a notification in Cura.

1. When there will be a new version you can find this function **install default firmware** under **Machine** in the Menu bar.

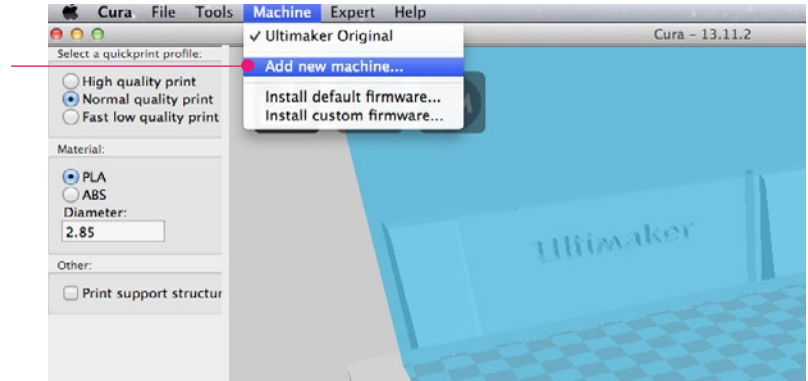
2. Install default firmware or look up the latest obtained firmware file (.hex). Now Cura will start uploading, this will take around 15 seconds.



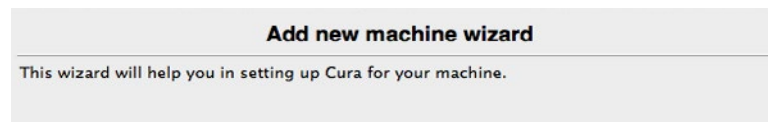
F3. Add a new 3D printer (machine)

For using various 3D printers Cura has a built-in function to work with different Ultimakers or 3D printers. So if you had the Ultimaker Original and now like to add the latest Ultimaker 2 in Cura it works as follows.

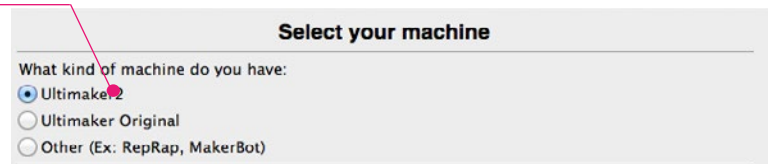
1. Under Machine in the menu bar you select **Add new machine**.



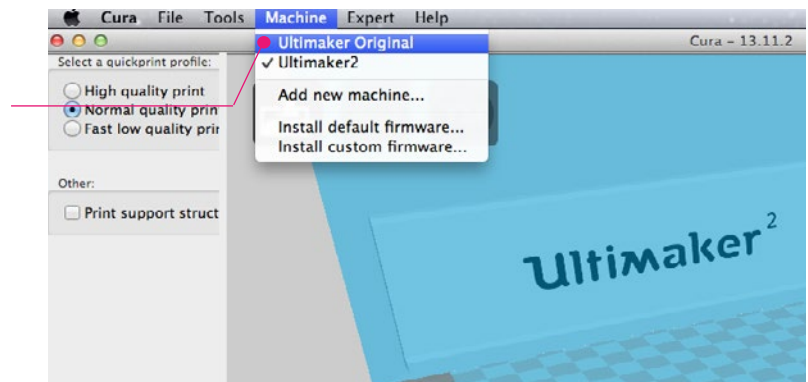
2. Select next on the add new machine wizard step.



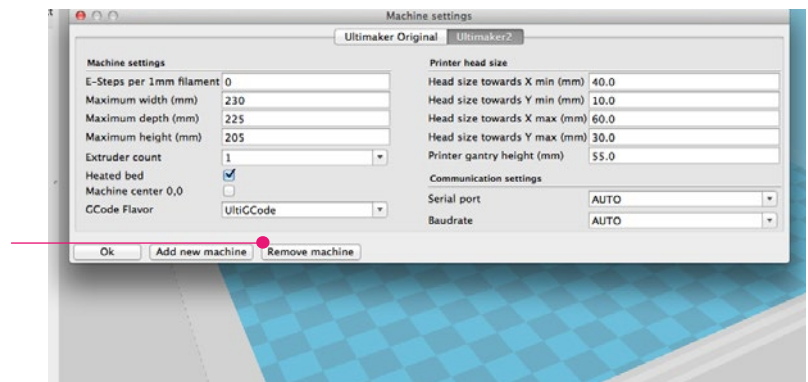
3. Select the machine type you would like to select.



4. Now you can switch by selecting the right machine, through machine in the Menu bar.



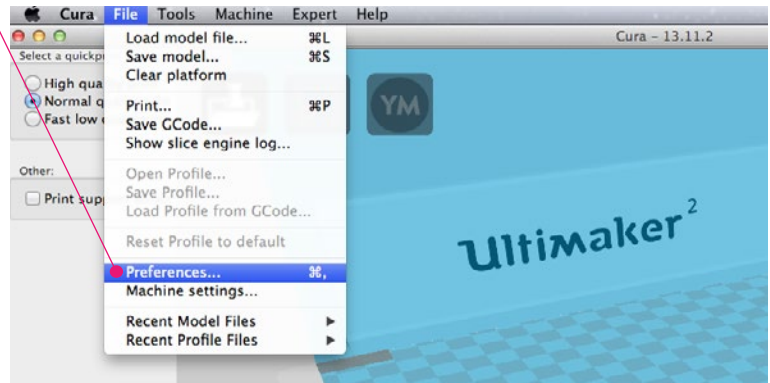
5. You can remove a 3D printer machine by going to File in the Menubar and select Machine settings, on the bottom of the pop up you find the function Remove Machine.



F4. Preferences of Cura

Other settings such as the colour of your model (in cura) Filament settings and Cura settings are positioned in this part. You especially wanted to reach out to these preferences when you want to know the price of your print.

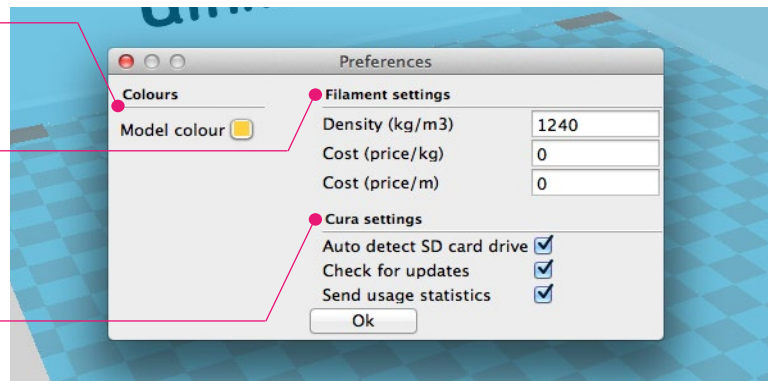
1. You can find the **preferences** menu under File in the Menu bar.



This is the **colour** of your 3D model in Cura.

Under these **Filament settings** Cura can calculate the price of your models.

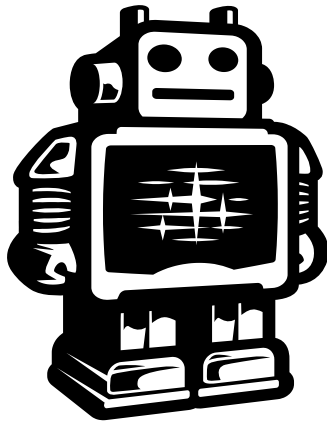
Other **Cura settings** that are advised to use but can be turned off when you uncheck the boxes.



F5. Copy profile to clipboard

Under Tools in the Menu bar you will find the function Copy profile to clipboard. This function can be used when you would like to send your settings to someone else. You can paste it in a Text area, like this you can share or send it to support, the forum or to someone. If you copy does text and go to Cura, will it automatically ask you to use these settings.





Ultimaker