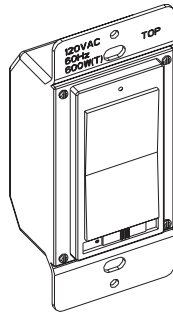




Z-Wave® enabled 3-Way 15 Amp In-Wall Switch User Manual

For Model HA18WD



Products that speak Z-Wave
work together better.™

Thank you for purchasing the Z-Wave® Enabled 3-Way 15 Amp In-Wall Switch. Z-Wave® products by Wayne-Dalton allow you to manage and control your home by remote control for convenience, comfort, safety and energy conservation. Your Z-Wave® Enabled In-Wall Switch features 15 Amp capability for single pole or 3-way applications such as chandeliers, foyer lights and outdoor flood lights and is a great addition to your Z-Wave® network for lighting control. In addition to indoor and outdoor lighting switches, thermostats, security systems, garage door openers and window shades are just a few of the items you can easily control with additional Z-Wave® certified products.

Your new Z-Wave® Enabled 3-Way In-Wall Switch is compatible with the complete range of Wayne-Dalton Z-Wave® certified controllers and will also work with Z-Wave® certified controllers from other manufacturers and brands. Please consult the user manual and your controller supplier for specific details.

Home Control Basics

Z-Wave® certified products will allow you to easily control multiple devices in a home with the push of a button in what is known as a “scene”. Turning on your home’s interior lights and activating the set-back on your thermostat from your in-vehicle remote as you come home is an example of a scene. Dimming the lights and automatically closing your curtains to watch TV with a single push of a button is another example of a scene.

To begin using Z-Wave® Home Control technology it is helpful to understand that each Z-Wave® module, including the Z-Wave® Enabled 3-Way In-Wall Switch, communicate with each other using a low power radio transmitter and receiver. Large metal objects, house wiring, walls, furniture, refrigerators, microwaves and similar items can interfere with communication between the modules to reduce the range or even prevent communication. Placement of the Z-Wave® Enabled 3-Way In-Wall Switch and other Z-Wave® modules is very important to obtain a reliable network.

A Z-Wave® network is a collection of Z-Wave® modules in a mesh type of network. Each Z-Wave® module, regardless of manufacturer, communicates with other modules within range to route and repeat the signals from one device to the next, this creates a highly reliable and robust transmission throughout the home. In addition, the network becomes stronger as more modules are added.

A Z-Wave® network can have only one primary controller. The primary controller establishes network security to ensure your network will not operate a neighbors network and vice-versa. It is a good practice to label and protect your primary controller since it is the only Z-Wave® controller that can add modules to or remove modules from your network. It is easy to add secondary controllers as your network grows. Your Z-Wave® Enabled 3-Way In-Wall Switch can belong to only one network, and therefore only one primary controller, but it can be added to as many secondary controllers or Z-Wave® “scenes” as you wish for added convenience.

For more tips and great ideas on how to create, set-up and use scenes for safety, security, comfort, convenience, and expand your network please visit our web site, www.wayne-dalton.com/access.

IMPORTANT NOTICE!

Read the enclosed instructions carefully before installing your new Z-Wave® Enabled 3-Way In-Wall Switch. Pay close attention to all warnings and notes and carefully follow the installation steps in the order they are presented to save time and minimize the risk of damaging the switch or the system it controls.

This manual should be retained for future reference.

Table of Contents

Introduction and Z-Wave® Home Control Basics.....	1
Table of Contents.....	2
Warnings and Glossary.....	2
Installation.....	3-5
Programming/Operation/Troubleshooting.....	5
Technical Specifications/Compliance.....	6



Warning

IMPORTANT WARNINGS and SAFETY INSTRUCTIONS

1. Heed all warnings.
2. Read and follow these instructions
3. Keep these instructions for future reference.
4. If you are unsure about any part of these instructions, consult a qualified electrician or use a qualified electrician for this installation.
5. Use this device only with copper or copper clad wire.
6. 3-Way switch applications may require an additional wire to be run, refer to the wiring diagrams for further instruction.
7. To reduce the risk of overheating and possible damage to other equipment, do not install to control a receptacle, a motor-operated appliance, a fluorescent lighting fixture, or a transformer supplied appliance.

GLOSSARY

Copy – See Replicate.

Delete – Erase transmitter or scene information from Controller. Also known as Exclude.

Device – Any item that is connected to a module (for example, lamps).

Exclude – Remove a module, transmitter or scene from the controller.

Include – Add a module to the controller. Also known as Inclusion.

Module – Any Wayne-Dalton or Z-Wave® product that is controlled with a Wayne-Dalton or Z-Wave® remote controller. A module can be part of more than one scene.

Network – A collection of Z-Wave® modules controlled by primary and secondary controllers operating on the same system. A network has its own unique identification code so that no one else can control the system.

Node – Single Z-Wave® endpoint (controller or module) on a network .

Primary Controller – The first controller used to set up your modules and network.

NOTE: *Only the Primary Controller can be used to include or delete modules from a network. It is recommended that you mark the primary controller for each network for ease in modifying your network.*

Replicate – Copy from one controller to another.

Scene – A scene is a series of Z-Wave® modules programmed to turn to a specific level (on, off or dim, normal mode, save mode, etc...) with the push of a button on a controller.

Schedule - A timer based event in the software that will activate a scene or turn on/off a zone at a specified time of day, or at sunrise or sunset.

Secondary Controller – A controller containing network information about other modules within the network, and is created FROM the primary controller. Secondary controllers cannot include or delete modules to the network.

INSTALLATION

1.

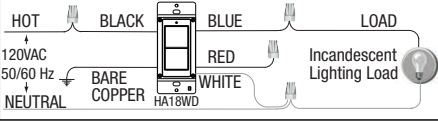


WARNING

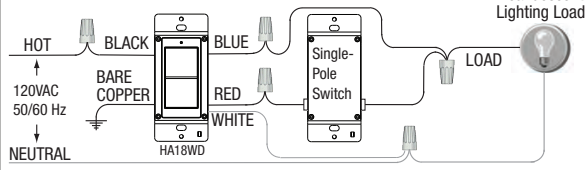
- ELECTRICAL SHOCK HAZARD. RISK OF INJURY OR DEATH. DISCONNECT ELECTRICAL POWER AT SERVICE PANEL BEFORE INSTALLING AND TEST THAT POWER IS OFF BEFORE WIRING.
- FOLLOW LOCAL ELECTRICAL CODES DURING INSTALLATION.
- FOR INDOOR USE ONLY.

2: Match your wiring application to the one of the diagrams below and refer to it for the remainder of the installation.

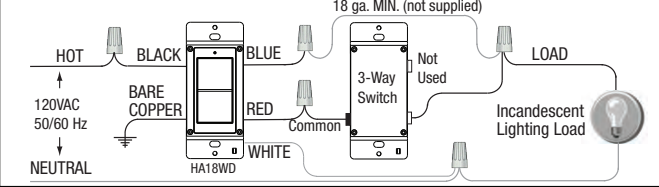
Single Pole Application



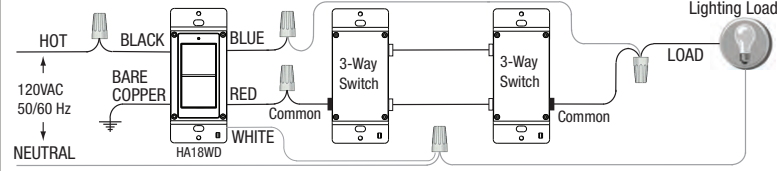
2 Switch/3-Way Application with Single-Pole Remote Switch



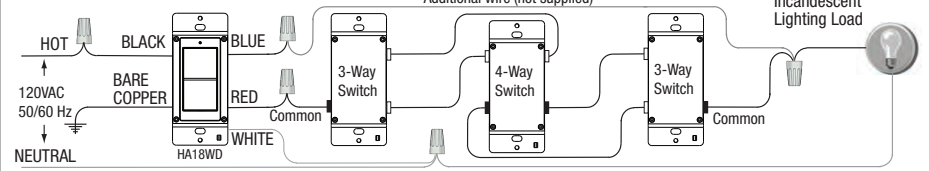
2 Switch/3-Way Application with 3-Way Remote Switch



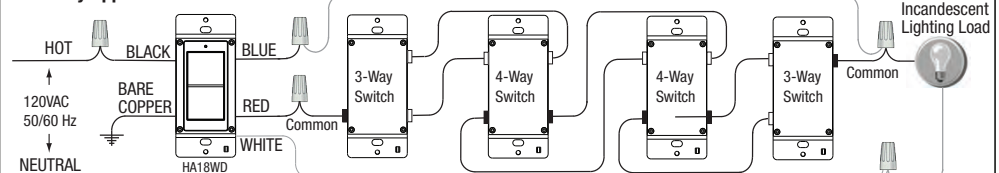
3 Switch Application



4 Switch Application

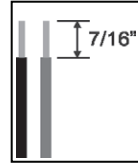


Multi-Way Application



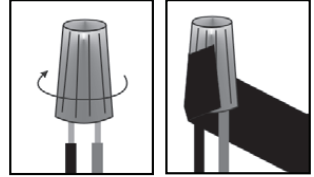
Installation (continued)

3. Trim wires to 7/16 inch as shown in the adjacent diagram.



4. Connect the **BLACK** wire of the HA18WD switch to the 120V **HOT** building wire (the wire leading to the circuit breaker or fuse box,) using a twist connector (provided.)

NOTE: Insert wires straight into the twist connector; the twist clockwise. Make sure all twist connectors are tight. Secure each twist connector with electrical tape. Verify no bare wire shows below the wire connector.



5A. FOR SINGLE POLE APPLICATION ONLY: Connect the **BLUE** wire of the HA18WD to the **LOAD** wire using a twist connector (provided.)

5B. FOR 2, 3, and 4 SWITCH, and MULTI-WAY APPLICATIONS: Connect the **BLUE** wire of the HA18WD to the **LOAD** wire of the lighting load using a twist connector provided.

NOTE: An additional wire run may be necessary in multi-switch applications to connect the HA18WD directly to the lighting load as shown in the wiring diagrams. Consult with a qualified electrician if you are unsure about any part of the installation.

6. Connect the **WHITE** wire of the HA18WD to the **NEUTRAL** wire using a twist connector (provided.)

7. Connect the ground wire from the box to the bare copper wire on the HA18WD switch. If there is no ground wire, connect the bare copper wire of the HA18WD to the wall box if it is metal. If the wall box is plastic, connect the bare copper wire to ground as supplied or consult with a qualified electrician.

8A. FOR SINGLE POLE APPLICATION ONLY: Remove the semi-stripped end of the **RED** wire and apply the twist connector to this wire without any connecting wire.

8B. FOR 2, 3, and 4 SWITCH, and MULTI-WAY APPLICATIONS: Connect the **RED** wire to the **COMMON** wire (aka traveler) of the next switch in the circuit.

9. Tuck wires into wall box leaving room for the HA18WD unit. For testing purposes, partially screw mounting screws (provided) of the HA18WD into the wall box.

10. Restore electrical power to the circuit.

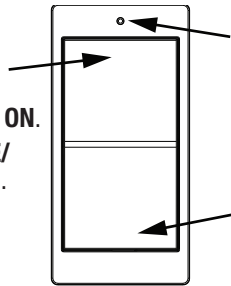
11. Test switch by pressing the upper part of the rocker switch to turn the lights ON and pressing the lower part of the rocker switch to turn the lights OFF. The lights should turn ON and OFF. **If lights do not turn on, refer to the TROUBLESHOOTING section.**

12. Upon successful testing, finish mounting the HA18WD unit to the wall box with the screws provided and install a decorator wall plate (not provided.)

Refer to your specific controller's user manual for detailed instructions on adding modules (devices) to a Z-Wave® network. Refer to diagram below for control and programming functions of switch.

Top of Rocker switch:

- A. Press and Release to turn light **ON**.
- B. Press and Release to **INCLUDE/EXCLUDE** to Network or Scene.
- C. Press and Release to **ADD** into Scene in **ON** position.



LED:

- A. LED ON indicates switch is ON.
- B. LED flashing indicates switch is communicating with Z-Wave® network.

Bottom of Rocker switch:

- A. Press and Release to turn light **OFF**.
- B. Alternate) Press and Release to **INCLUDE/EXCLUDE** to Network or Scene.
- C. Press and Release to **ADD** into Scene in **OFF** position.

Troubleshooting

1. Light does not turn ON:

- Lamp bulb is burned out - Replace.
- Wire connection is broken - Following all safety precautions, remove switch and check all connections.
- Circuit breaker or fuse has tripped - Reset/Replace.

2. Light flickers:

- Lamp bulb is not screwed in properly. - Check and tighten.
- Wire connection is intermittent - Following all safety precautions, remove switch and check connections.

3. Z-Wave® controller will not operate switch:

- Lamp bulb is burned out - Replace.
- Switch was programmed in the OFF position - Reprogram to ON position.
- Switch is not programmed to Network or Scene - Reprogram.

TECHNICAL SPECIFICATIONS

- For control of permanently installed incandescent lamp or compact fluorescent fixtures
- Ratings: 15 Amps General Purpose, 120 VAC, 50/60 Hz
- Suitable for up to 3 gang installations
- Operating temperature range: 32°F - 104°F/0°C - 40°C

CUSTOMER SUPPORT

For Installation and Z-Wave programming support,
please e-mail: homesettings@wayne-dalton.com

Additional product information and general information on Wayne-Dalton Home Control products may be found on our web site at www.wayne-dalton.com/access.

FCC and IC Statement

FCC Regulatory Information:

NOTE: This equipment has been tested and found to comply with the limits for a Class B digital device, pursuant to Part 15 of the FCC Rules. These limits are designed to provide reasonable protection against harmful interference in a residential installation. This equipment generates, uses, and can radiate radio frequency energy and, if not installed and used in accordance with the instruction, may cause harmful interference to radio communications. However, there is no guarantee that interference will not occur in a particular installation. If this equipment does cause harmful interference to radio or television reception, which can be determined by turning the equipment off and on, the user is encouraged to try and correct the interference by one or more of the following measures:

- a) reorient or relocate the receiving antenna,
- b) increase the separation between the equipment and receiver,
- c) connect the equipment into an outlet on a circuit different from that to which the receiver is connected.

Consult the dealer or an experienced radio/TV technician for help.

IC Regulatory Information:

This Class B digital apparatus meets all requirements of the Canadian Interference Causing Equipment Regulations. Operation is subject to the following two conditions: (1) this device may not cause harmful interference, and (2) this device must accept any interference received, including interference that may cause undesired operation of the device.

Cet appareillage numérique de la classe B répond a toutes les exigences de l'interférence canadienne causant des règlements d'équipement. L'opération est sujette aux deux conditions suivantes: (1) ce dispositif peut ne pas causer l'interférence nocive, et (2) ce dispositif doit accepter n'importe quelle interférence reçue, y compris l'interférence qui peut causer l'opération peu désirée.

WARNING: Changes or modifications to this receiver not expressly approved by Wayne-Dalton Corp. could void the user's authority to operate this equipment.