

iHome™

IH-W350DB
IH-W351DW

MyLife webcam pro
5.0 megapixel max resolution



user manual

Congratulations on the purchase of your new **MyLife webcam pro**. This product comes with a limited lifetime warranty.

Before using your product, please thoroughly read and follow the instructions inside this manual.

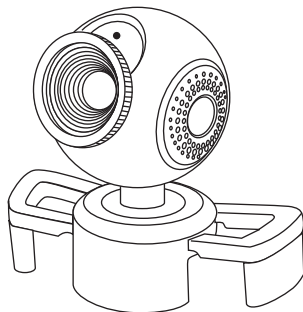
If you still need help, see the back page for other support options.

If you want to know more about our products, visit us online at www.life-works.com.

system requirements

- Windows® XP Service Pack 2 or Windows Vista®
- USB port (a USB 2.0 port is required for optimal performance)
- CD-ROM drive

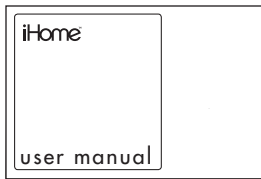
your package should contain



MyLife webcam pro



ArcSoft PhotoImpression[®],
VideoImpression[®] and
driver installation CD



user manual
(in your hands right now)

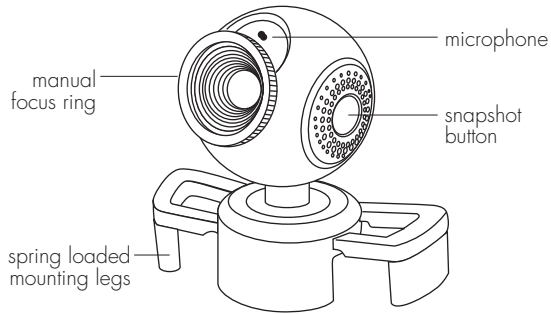
user manual contents

- features • 2
- your new webcam • 3
- install software • 3
- connect hardware • 4
- use your webcam • 5
- capture video • 5
- capture still shots • 9
- product operating tips • 10
- troubleshooting • 10

features

- 5.0 megapixel maximum resolution
- motion tracking
- 3× digital zoom
- fits most desktop and notebook monitors

your new webcam



► **note** You must install the driver software before connecting your webcam to your computer.

install software

to install the webcam driver

1. Insert the installation CD into your computer. On the screen that appears, click **install driver**.



2. An **InstallShield Wizard** dialog box displays. Click **Next**.
 3. After the driver has been installed, an **InstallShield Wizard Complete** dialog box displays. Click **Finish**.
- The main software installation screen displays again.

to install included webcam applications

1. On the main software installation screen, click the application you want to install: **ArcSoft Videolmpression** or **ArcSoft Photolmpression**.



2. Select a language and click **OK**.
3. An **InstallShield Wizard** dialog box displays. Click **Next**. Click **Yes** to accept the license agreement. Click **Next** to accept the default installation location.
4. A **Select Program Folder** dialog box displays. Click **Next**.

4

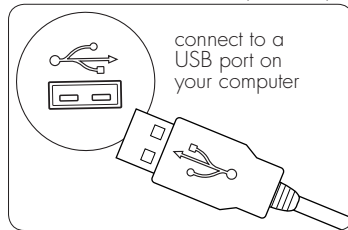
5. After the application finishes installing, an **InstallShield Wizard Complete** dialog box displays. Click **Finish**.

6. The main software installation screen displays again.

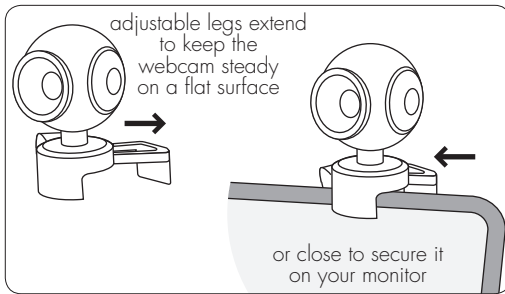
Repeat the above steps to install the other application. Click **exit** on the main software installation screen when done. When the **USB PC Camera Setup Complete** dialog box displays, choose to restart your computer now and click **OK**.

connect hardware

1. Connect the USB cable to a USB port on your computer.



2. Place the webcam on a desk or mount it on your computer monitor or other convenient object by opening the legs of the webcam base.



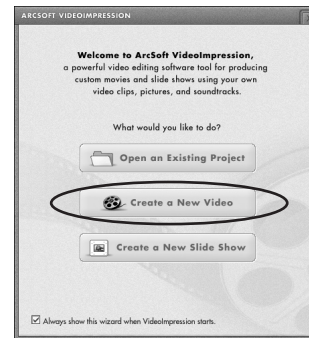
► **note** Mount the webcam approximately 3 ft. (1 m) from where you sit at your computer. This ensures the picture is not distorted and that the microphone can easily pick up your voice.

use your webcam

You can start using your webcam immediately for video conferencing with one of the many video conferencing services available over the internet. Additional features are available through the ArcSoft VideoImpression and PhotoImpression software applications.

capture video

1. Click **Start > All Programs > ArcSoft VideoImpression 2 > VideoImpression 2** to open the Video Start Page. Click **Create a New Video**.



2. A second page displays. Click **Capture From Device**.

3. The record dialog box displays. If you want to change the video settings, zoom, turn on face tracking or use special effects, click **Settings** (see “change video settings” on page 7).



Click the **record** button.

4. A **Save As** dialog box displays. Type a name for the video, change the other options as desired, then click **Start capturing**.



5. The webcam begins recording. Click the **stop** button to stop recording. Click **DONE** when finished.



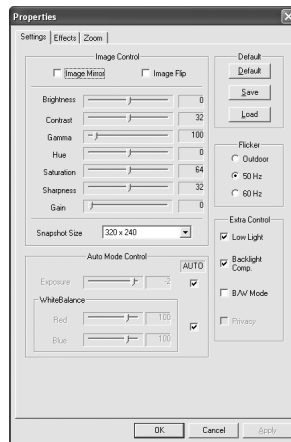
The main ArcSoft VideoImpression window displays. Here you can organize your photos and videos, and create video projects. Click **Help > Basics** for a basic introduction to using the software.

change video settings

To change video settings and access other webcam settings, click **Settings** in the record dialog box (see “capture video” on page 5).



The webcam properties dialog box displays.

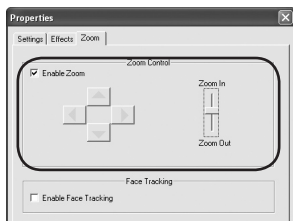


Here you can change image, video and camera settings.

zoom

Your webcam can zoom in as much as 3x. To change the zoom level when using ArcSoft VideoImpression:

1. Click **Settings** in the record dialog box (see “change video settings” on page 7).
2. The **webcam properties** dialog box displays. Select the **Zoom** tab.



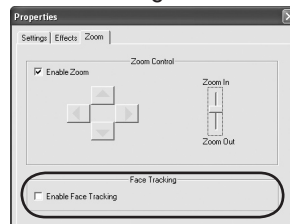
3. Select **Enable Zoom**, then click and drag the **Zoom** slider to change the zoom level.
4. Use the arrow controls to move the zoom window within the full camera image.
5. Click **OK**.

turn on face tracking

Face tracking keeps the camera on a person's face without mechanically moving the camera if the person moves around in the chair.

To turn on face tracking:

1. Click **Settings** in the record dialog box (see “change video settings” on page 7).
2. The **webcam properties** dialog box displays. Select the **Zoom** tab.
3. Select **Enable Face Tracking**.

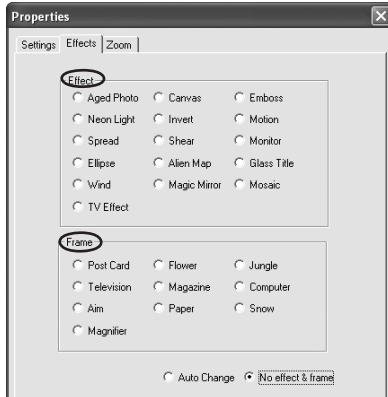


4. Click **OK**.

use special effects

A number of effects can be applied to the video. To apply an effect:

1. Click **Settings** in the record dialog box (see “change video settings” on page 7).
2. The **webcam properties** dialog box displays. Select the **Effects** tab.
3. Select an effect or image frame.



4. Click **OK**.

capture still shots

1. Click **Start > All Programs > ArcSoft Photolmpression 5 > Photolmpression 5** to open the **Photo Start Page**. Click **Video**.



2. The **Capture Image from Video** dialog box displays. Click **Live** to show the video feed from the camera, then click **Capture** to take a photo.



3. Click **Done** when finished.

The main ArcSoft PhotoImpression window displays. Here you can capture more photos, enhance and modify your photos, create photo projects and print photos. Click **Help > Help** for more details on how to use the application with your webcam.

product operating tips

- Turn the ring on the front of the webcam to manually focus the image.
- Press the button on the side of the webcam to take a still shot or start a video capture (depending on which

applications are installed on your computer).

- Click **Help > Basics** in ArcSoft VideoImpression for a basic introduction to using the software. Click **Help > Help** for more detailed information on how to use the application with your webcam.
- Click **Help** in ArcSoft PhotoImpression for more details on how to use the application with your webcam.

troubleshooting

situation	try this
-----------	----------

no video is displayed	
-----------------------	--

- | | |
|--|--|
| | <ul style="list-style-type: none">• Check that the webcam is connected to the computer.• Use a different USB port.• Connect the webcam to a USB port on the computer, not a USB hub.• Uninstall and reinstall the driver. To uninstall the driver, click Start > Control Panel > Add or Remove Programs, select MyLife Webcam Pro and click Change/Remove. |
|--|--|

video stutters or stops	
-------------------------	--

- | | |
|--|--|
| | <ul style="list-style-type: none">• Disconnect and reconnect the webcam.• Ensure the webcam is connected to a USB 2.0 port (not a slower USB 1.1 port). |
|--|--|



FCC Statement

This device complies with part 15 of FCC Rules. Operation is subject to the following two conditions: (1) this device may not cause harmful interference, and (2) this device must accept any interference received, including interference that may cause undesired operation. This equipment has been tested and found to comply with the limits for a Class B digital device, pursuant to part 15 of FCC Rules. These limits are designed to provide reasonable protection against harmful interference when the equipment is operated in a residential installation. This equipment generates, uses, and can radiate radio frequency energy and, if not installed and used in accordance with the instruction guide, may cause harmful interference to radio communications. However, there is no guarantee that interference will not occur in a particular installation. If this equipment does cause harmful interference to radio or television reception, which can be determined by turning the equipment off and on, the user is encouraged to try to correct the interference by one or more of the following measures:

- Reorient or relocate the receiving antenna.
- Increase the separation between the equipment and the receiver.
- Connect the equipment into an outlet on a circuit different from that to which the receiver is connected.

Consult a service representative for help.

Properly shielded and grounded cables and connectors must be used in order to comply with FCC emission limits. LifeWorks is not responsible for any radio or television interference caused by using other than recommended cables and connectors or by unauthorized changes or modifications to this equipment. Unauthorized changes or modifications could void the user's authority to operate the equipment.

Responsible party:

LifeWorks Technology Group LLC
1412 Broadway
New York, NY 10018


FC Tested To Comply With FCC Standards
FOR HOME OR OFFICE USE

Warning

Improper setup, use and care of this product can increase the risk of serious injury, death or device damage. Read and keep this guide and all other printed guides for future reference. For updated guides or replacements, go to www.life-works.com

Do Not Attempt Repairs

Do not attempt to take apart, open, repair, service or modify the device(s). Doing so may risk electric shock or other hazard. Evidence of any attempt to open or modify the device, including any peeling, puncture or removal of labels, will void the limited Lifetime Warranty.





Printed in China

© 2008 LifeWorks Technology Group LLC.

iHome™ is a trademark of SDI Technologies Inc. used under license.

Windows Vista® is a registered trademark or trademark of Microsoft Corporation in the United States and/or other countries.

All other brands and logos are trademarks of their respective companies.

technical support

for technical support please visit

www.life-works.com

or call (877) LIFE-540

(877-543-3540)

lifetime warranty

for warranty information, please visit

www.life-works.com/warranty

for model number(s)

IH-W350DB

IH-W351DW

document version number 0811-0

