

## **MARELEC C Portio**

Portion cutter production management  
Software version V1.0.2

\*\*\*\*\*

### **User manual**

(Marelec\_C\_Portio\_v1.0.2\_EN)

---

## Content

Content .....	2
1. Introduction .....	3
1.1 System requirements .....	3
2. Installation .....	4
2.1 Installation of C Portio .....	4
3. Functionality .....	6
3.1 User interface .....	6
3.2 Programs .....	7
3.3 Products and cuts .....	8
3.4 Program viewer .....	9
3.5 Reports .....	10
4. Settings .....	12
4.1 Administration .....	12
4.2 Devices .....	13
4.3 Language .....	14
5. Support .....	15
5.1 Contact .....	15
5.2 C Server .....	15

## 1. Introduction

The Marelec C Portio software is used to review portion cutting results. Its data comes from one or multiple Marelec Intelligent Portion Cutters (Portio).

C Portio can create reports from this data, and they can be exported to spreadsheet-software.

### 1.1 System requirements

- Minimum system requirements

- Microsoft Windows (2000 / XP / Vista / 7 / 8)
- 30MB of free hard disk space
- 800x600 screen resolution

- Required hardware

- One or multiple **Marelec Intelligent Portion Cutters** (Portio). A network connection needs to exist between the computer(s) and portion cutter(s).

- Required software

Before the C Portio software can be used, the **C Server** (formerly PMS Server 2.x) software must be installed on **one computer** on the local computer network. C Server is responsible for retrieving data from the devices, even when no C Portio programs are running.

C Portio relies on this server to display information and reports, and can't function if no such server is present on the computer network.

It's important that the computer running the C Server software is always running when the devices are in use, to ensure that all of the data can be retrieved and stored.

## 2. Installation

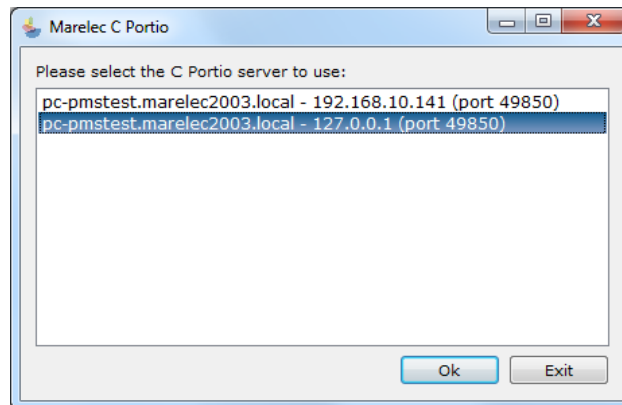
### 2.1 Installation of C Portio

This software can be installed on several computers, not necessarily on the same computer on which the C Server software was installed.

1. Start the installation file of the C Portio software (**Setup C Portio 1.0.2.exe**).
2. Click on **Next** at every step of the installation. Finally click **Install**.
3. If a C Server was already installed on a computer in the local computer network, C Portio can now be started to select this server from a list of available servers.

If it's the same computer, the server might appear twice in the list with a different IP-address. In that case it doesn't matter which one you pick as they will both work.

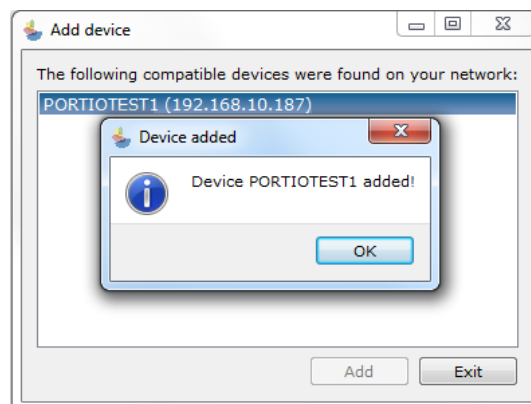
If no servers appear in the list, and you've verified a C Server is running on the computer network, the connection might be blocked by a firewall. Please add an exception for C Server (**CServer.exe**) in the firewall-application.



**Screenshot 1: selection of the server**

4. Next, at least one device (Portio) must be added to the system.

If the device doesn't appear in the list, check if the device is running and is connected with a network cable to the local computer network.



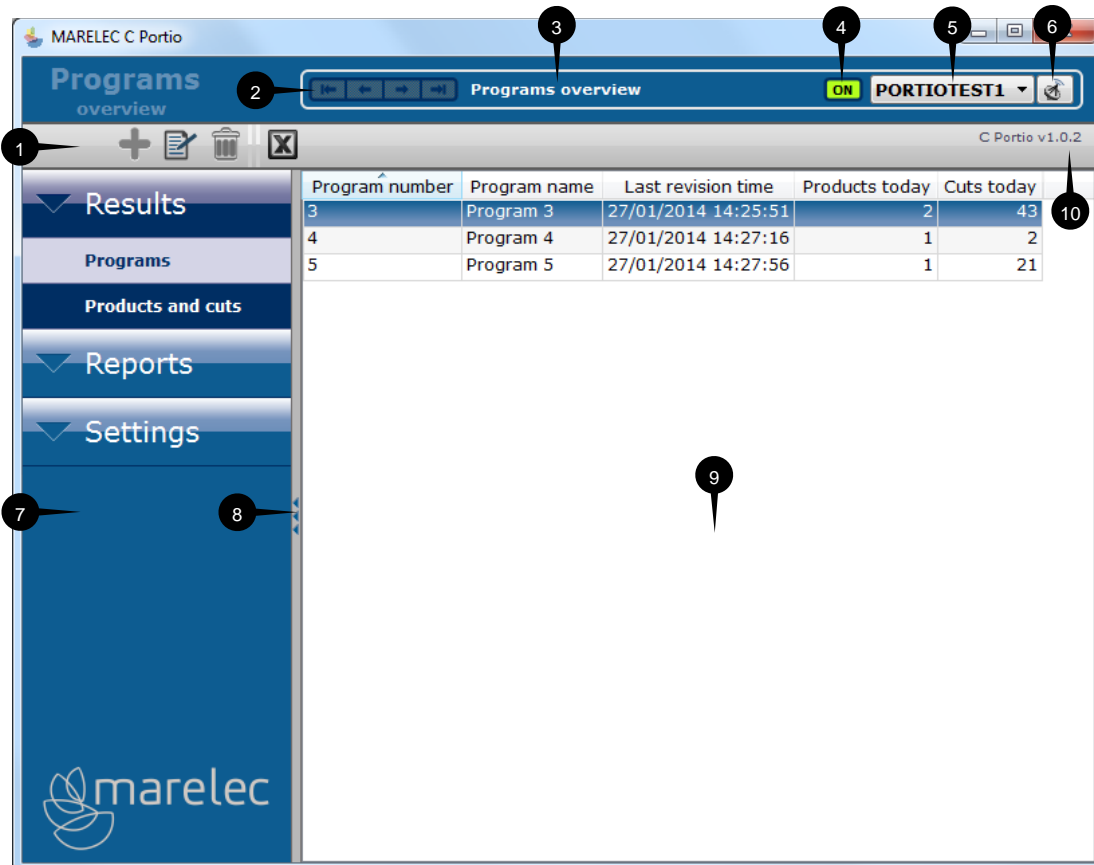
**Screenshot 2: add device**

5. C Portio is nearly ready for use now. To be able to view data and reports, a valid license code must be entered. See the chapter **Settings** for more information.

### 3. Functionality

#### 3.1 User interface

- Layout



**Screenshot 3: layout of the C Portio main window**

1. Toolbar/button bar (see the following section)
2. Navigation buttons: first, previous, next and last (when appropriate)
3. Name of the current page
4. Device status indication
5. Device selection
6. Start remote control
7. Menu with page links, categorized
8. Fold or unfold the menu
9. Content of the current page
10. Software version number

- Toolbar

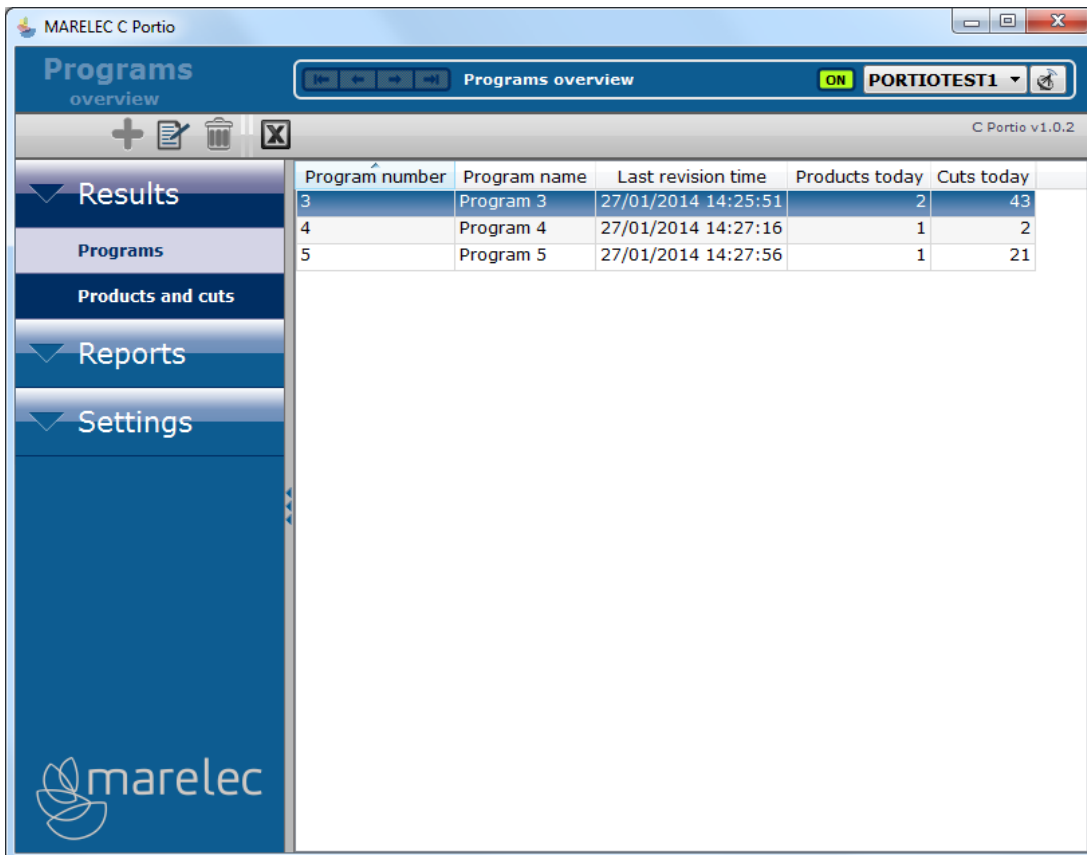


The toolbar contains buttons for adding, editing and removing. The buttons have a different function depending on the page you're viewing.



Reports can be exported to Microsoft Excel. It isn't necessary to have Excel on the computer to use this function. This means other spreadsheet-software can be used, such as Apache OpenOffice Calc.

## 3.2 Programs



Program number	Program name	Last revision time	Products today	Cuts today
3	Program 3	27/01/2014 14:25:51	2	43
4	Program 4	27/01/2014 14:27:16	1	2
5	Program 5	27/01/2014 14:27:56	1	21

**Screenshot 4: programs overview**

This page is an overview of all the programs that have been used on the Portio to cut products, with the exception of conditional programs. However it does also include the programs that are selected by a conditional program, based on the product's length.

The overview updates itself every 5 seconds. Per program the following fields are shown:

- Program number** The number of the program. New numbers can be assigned to programs on the Portio.
- Program name** The name of the program. Programs can be renamed on the Portio.
- Last revision time** The last time any setting was changed in the Portio program. This includes changes to the cuts defined in the program. The time is only updated when new products are cut with the modified program.

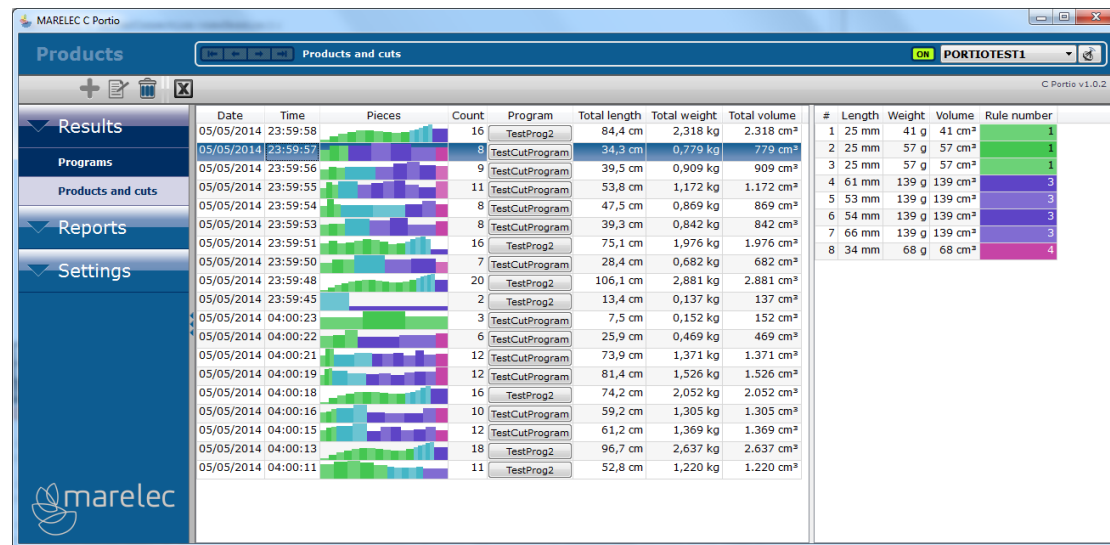
**Products today**      The amount of products that have been scanned by the Portio.

**Cuts today**            The amount of cut pieces that left the Portio today. This includes remainder pieces.

### 3.3 Products and cuts

The “Products and cuts” page shows detailed information for every processed product. This includes the length, weight, volume, cut count and the cutting program that was used.

A small graph shows roughly how the product was cut, with each rule from the cutting program being indicated by a different color. The program viewer allows you to see the program settings for each of these rules.



Date	Time	Pieces	Count	Program	Total length	Total weight	Total volume	#	Length	Weight	Volume	Rule number
05/05/2014	23:59:58		16	TestProg2	84,4 cm	2,318 kg	2.318 cm³	1	25 mm	41 g	41 cm³	1
05/05/2014	23:59:57		8	TestCutProgram	34,3 cm	0,779 kg	779 cm³	2	25 mm	57 g	57 cm³	1
05/05/2014	23:59:56		9	TestCutProgram	39,5 cm	0,909 kg	909 cm³	3	25 mm	57 g	57 cm³	1
05/05/2014	23:59:55		11	TestCutProgram	53,8 cm	1,172 kg	1.172 cm³	4	61 mm	139 g	139 cm³	3
05/05/2014	23:59:54		8	TestCutProgram	47,5 cm	0,869 kg	869 cm³	5	53 mm	139 g	139 cm³	3
05/05/2014	23:59:53		8	TestCutProgram	39,3 cm	0,842 kg	842 cm³	6	54 mm	139 g	139 cm³	3
05/05/2014	23:59:51		16	TestProg2	75,1 cm	1,976 kg	1.976 cm³	7	66 mm	139 g	139 cm³	3
05/05/2014	23:59:50		7	TestProg2	28,4 cm	0,682 kg	682 cm³	8	34 mm	68 g	68 cm³	4
05/05/2014	23:59:48		20	TestProg2	106,1 cm	2,881 kg	2.881 cm³					
05/05/2014	23:59:45		2	TestProg2	13,4 cm	0,137 kg	137 cm³					
05/05/2014	04:00:23		3	TestCutProgram	7,5 cm	0,152 kg	152 cm³					
05/05/2014	04:00:22		6	TestCutProgram	25,9 cm	0,469 kg	469 cm³					
05/05/2014	04:00:21		12	TestCutProgram	73,9 cm	1,371 kg	1.371 cm³					
05/05/2014	04:00:19		12	TestCutProgram	81,4 cm	1,526 kg	1.526 cm³					
05/05/2014	04:00:18		16	TestProg2	74,2 cm	2,052 kg	2.052 cm³					
05/05/2014	04:00:16		10	TestCutProgram	59,2 cm	1,305 kg	1.305 cm³					
05/05/2014	04:00:15		12	TestCutProgram	61,2 cm	1,369 kg	1.369 cm³					
05/05/2014	04:00:13		18	TestProg2	96,7 cm	2,637 kg	2.637 cm³					
05/05/2014	04:00:11		11	TestProg2	52,8 cm	1,220 kg	1.220 cm³					

**Screenshot 5: products and cuts**

When selecting a single product, the list of cuts made by the Portio is shown on the right side of the screen.



Selected products or cuts can be deleted from the database with the remove-button. For example, a batch of test products can be deleted so these results aren't included in reports.

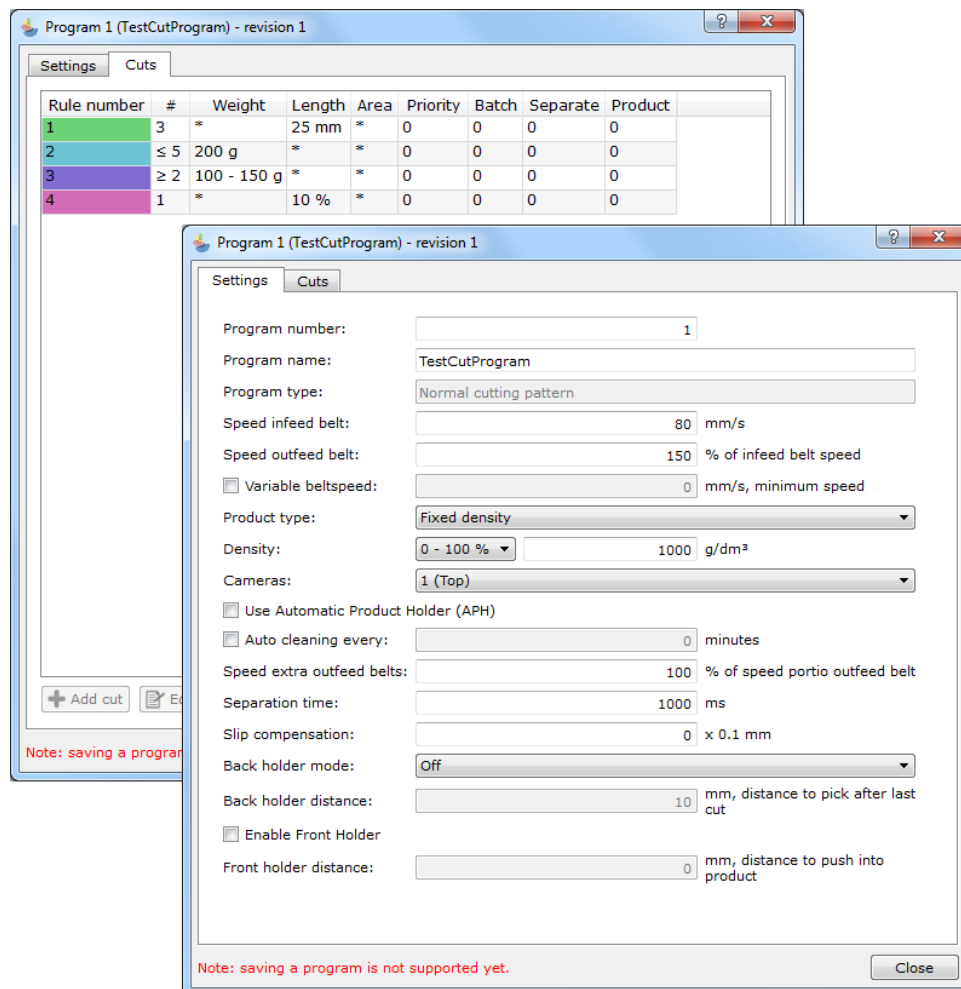


### 3.4 Program viewer

The program viewer is accessible from the “Products and cuts” page and from the “Totals, per program” report.

It shows the settings and cut definitions of a cutting program. However, if the Portio software being used is newer than the C Portio software, it’s possible that certain settings aren’t displayed.

Currently, in version 1.0.2, programs can be viewed but not saved. For now, changing the Portio program must be done directly on the machine, or via the remote control client.



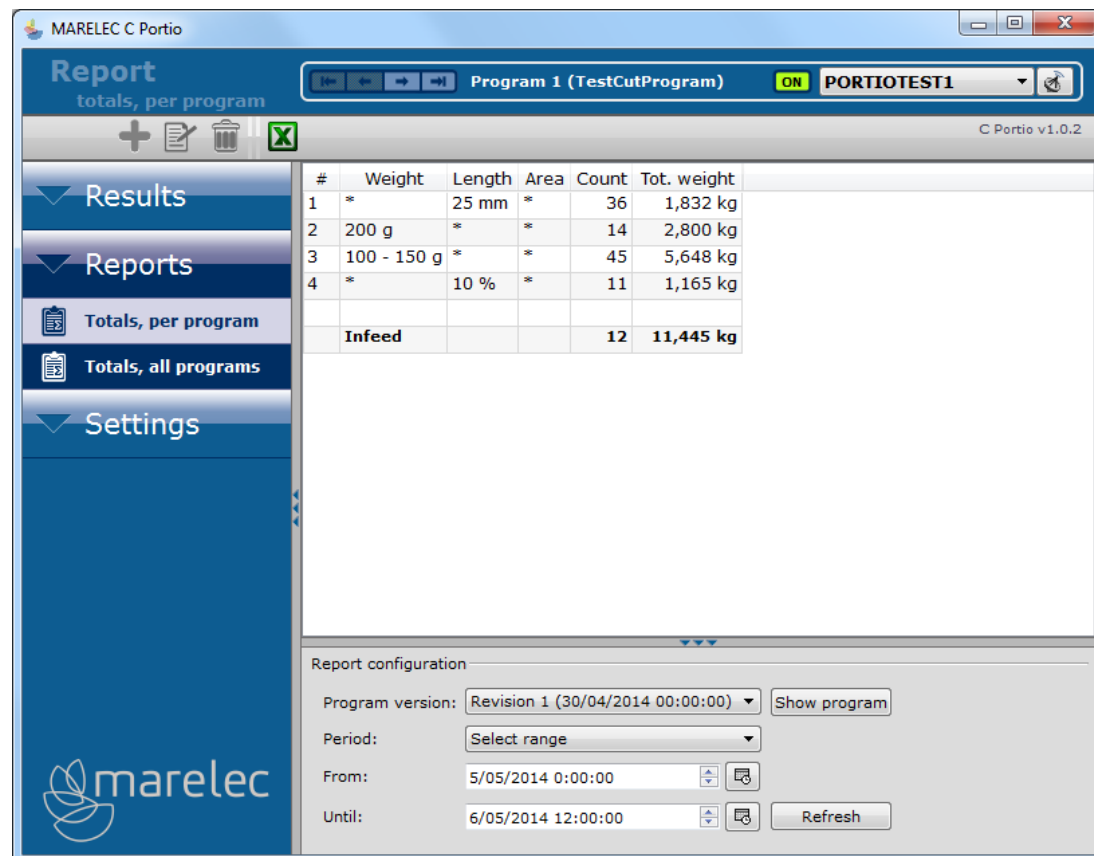
Screenshot 6: program viewer

## 3.5 Reports

The reports-category in the menu contains all of the available reports. Version 1.0.2 of this software has two reports: the totals per program and the totals for all programs.

Reports can be exported as an Excel-spreadsheet.

- Totals, per program



#	Weight	Length	Area	Count	Tot. weight
1	*	25 mm	*	36	1,832 kg
2	200 g	*	*	14	2,800 kg
3	100 - 150 g	*	*	45	5,648 kg
4	*	10 %	*	11	1,165 kg
<b>Infeed</b>				<b>12</b>	<b>11,445 kg</b>

Report configuration

Program version: Revision 1 (30/04/2014 00:00:00) Show program

Period: Select range

From: 5/05/2014 0:00:00

Until: 6/05/2014 12:00:00 Refresh

**Screenshot 7: totals, per program**

This report is similar to the results screen on the Portio. The main differences are that the report can be configured to show results from a specific period, and the results aren't forgotten when the Portio machine shuts down or reboots.

Every numbered line corresponds to a defined cut in the Portio program, with its weight and length specification. For each defined cut, the total amount and weight of pieces that have gone through the Portio is displayed.

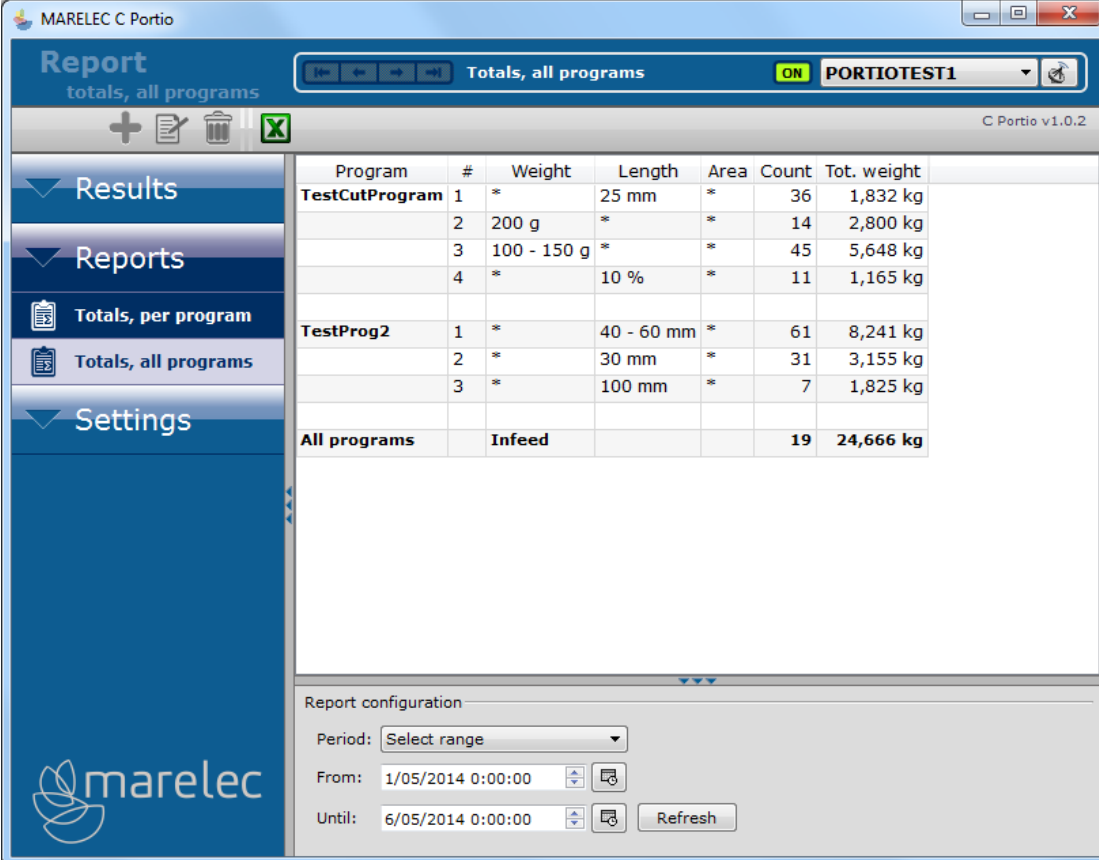
On the bottom, the "Infeed" line shows the amount of products and the total weight of products that the Portio has processed. The difference of this total weight and the sum of total weights from defined cuts is the total weight of remainder pieces (if any).

Every time the program has changed, a new revision number will appear in the "Program version" list. The 5 latest revisions are available for selection. On clicking the "Show program" button, it will show the exact program settings for that revision (see below).

If multiple Portio programs were used, the navigation buttons can be used to show this report for the previous or the next Portio program.

The report automatically updates itself every 5 seconds. The "refresh" button can be used to update it manually.

- Totals, all programs



Program	#	Weight	Length	Area	Count	Tot. weight
<b>TestCutProgram</b>	1	*	25 mm	*	36	1,832 kg
	2	200 g	*	*	14	2,800 kg
	3	100 - 150 g	*	*	45	5,648 kg
	4	*	10 %	*	11	1,165 kg
<b>TestProg2</b>	1	*	40 - 60 mm	*	61	8,241 kg
	2	*	30 mm	*	31	3,155 kg
	3	*	100 mm	*	7	1,825 kg
<b>All programs</b>		<b>Infeed</b>			<b>19</b>	<b>24,666 kg</b>

Report configuration

Period:

From:

Until:

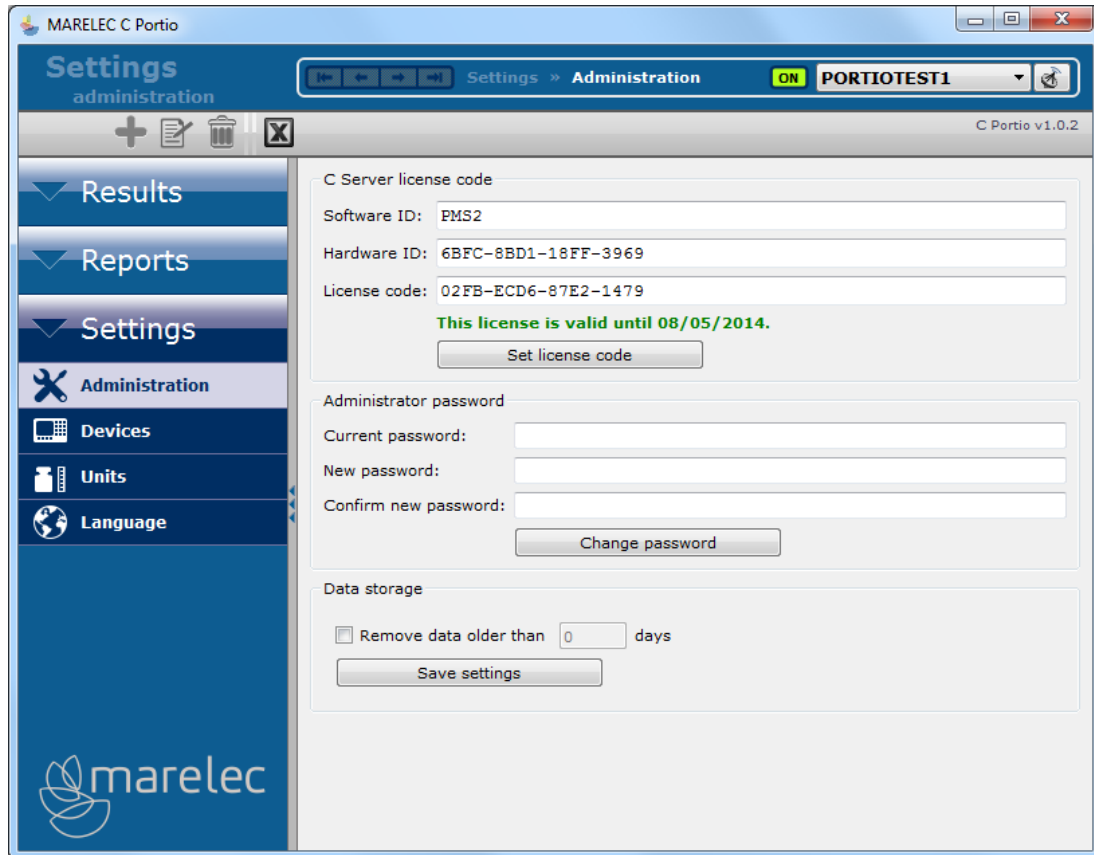
**Screenshot 8: totals, all programs**

This report shows the results from all programs during a specific period. If a program was changed during this period, they are shown separately.

On the bottom, the “Infeed” line shows the amount of products and the total weight of products that the Portio has processed, for all programs combined.

## 4. Settings

### 4.1 Administration



Screenshot 9: administration

- License code C Server

To be able to view data and reports with the C Portio software, a valid license code must be entered here. To modify the license code, the administrator password is required. By default this is **1234** but it can be changed on the same page.

Contact Marelec to acquire a license code. Please include the software- and hardware-ID in your request. The hardware-ID is specific for every computer the C Server software was installed on.

- Change the administrator password

The administrator password (**1234** by default) can be changed here. To confirm the new password, it must be entered twice.

Don't forget this password!

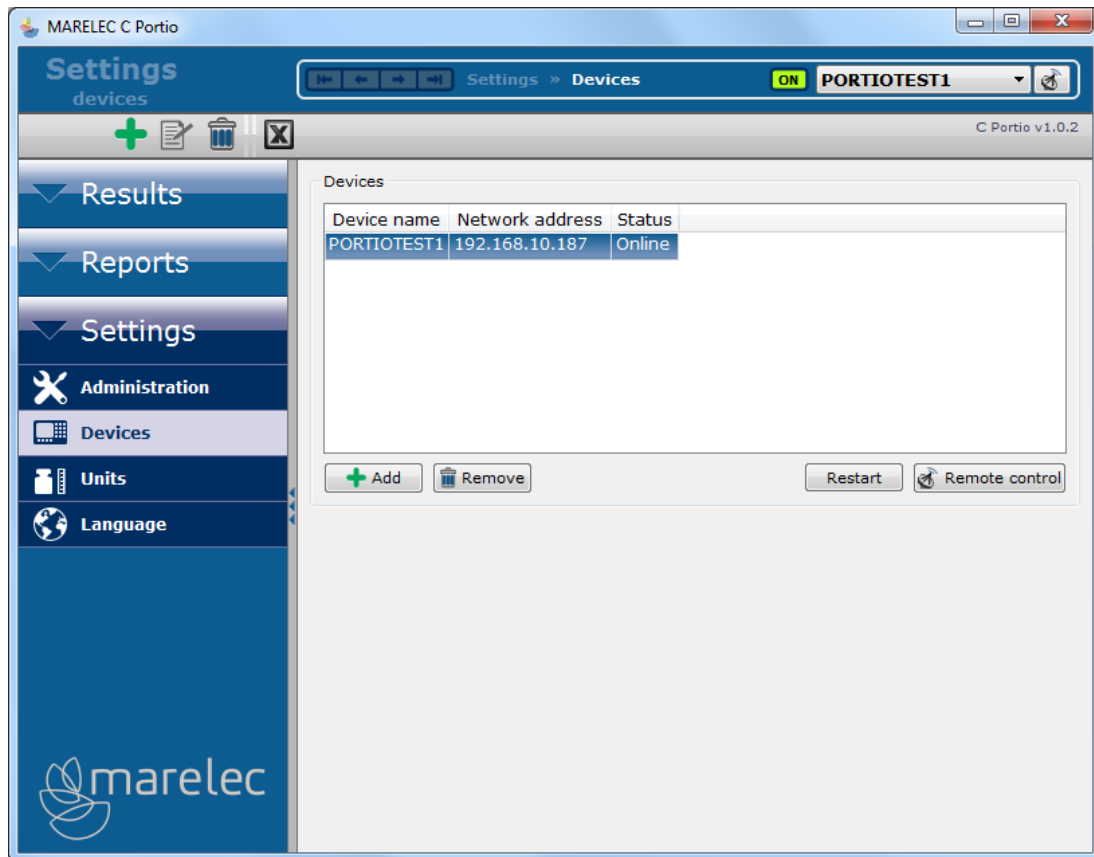
- Setting a data storage time limit

Data can be automatically deleted when it becomes older than a specified number of days. By default, no data will be deleted.

## 4.2 Devices

This page lists devices the C Server retrieves data from. Devices can be added and removed. There needs to be at least one portion cutter to be able to use the C Portio software.

**Caution:** When removing a device, all its data will be deleted from the C Server's database.



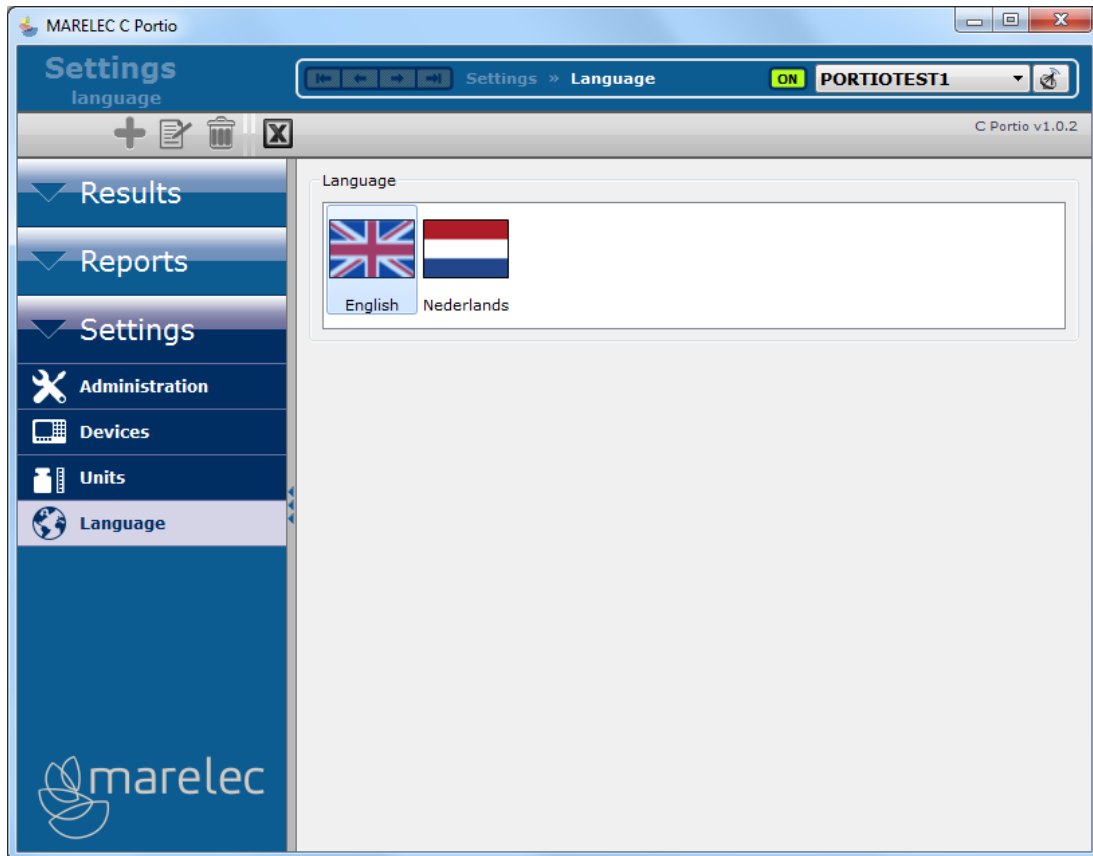
Screenshot 10: devices

A Portio can also be restarted and controlled remotely.

Some actions require the administrator password. The default password is **1234**. The password can be changed at **Settings** → **Administration**.

## 4.3 Language

If possible, C Portio uses the same language that Windows is using. Otherwise it will default to English. If you wish you can change the language on this page. Currently the choice is limited to English and Dutch.



Screenshot 11: change language

## 5. Support

### 5.1 Contact

- [support@marelec.com](mailto:support@marelec.com)
- tel: +32 (0)58 23 51 98
- fax: +32 (0)58 23 92 80

### 5.2 C Server

Issues with the C Portio software can be related with the C Server software. Please consult the C Server manual for more information and troubleshooting.