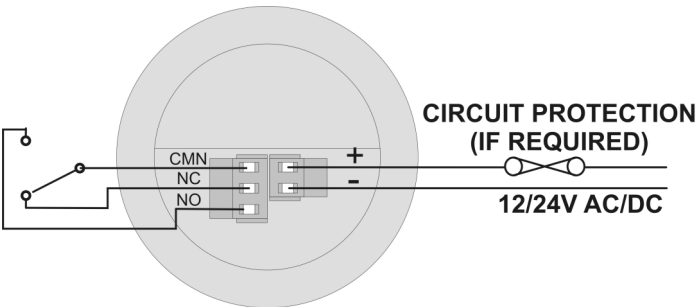
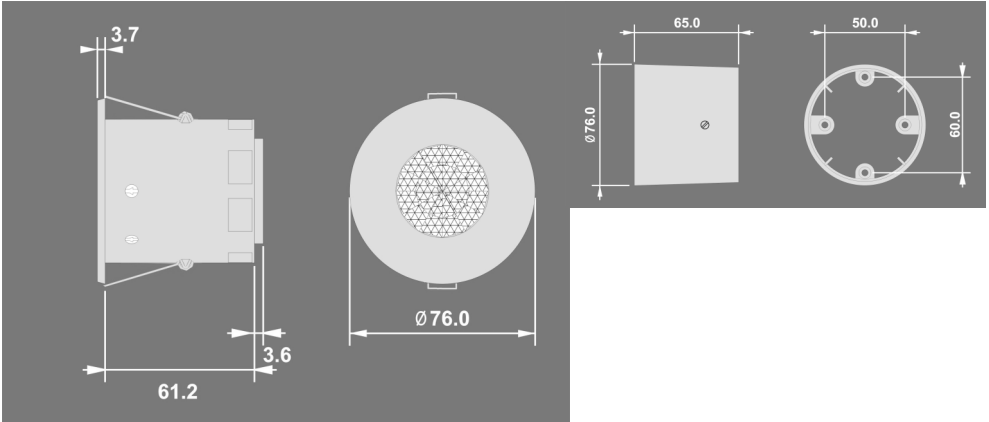


EBDSPIR-24V-VFC (NL) Ceiling Presence Detector



Overview

The EBDSPiR series of presence detector switches are designed to provide automatic control of lighting, heating or ventilation loads. They detect movement using a PIR sensor and turn the load on. When an area is no longer occupied the load will switch off after an adjustable time out period.

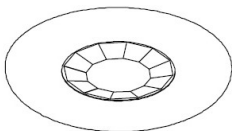
An optional adjustable internal light sensor provides additional energy saving in lighting applications. When an area is occupied lighting is only switched on when the level of natural light is below a preset level. The EBDSPiR-24V-NL-VFC product does not have the internal light sensor.

When the unit is first powered up the PIR sensor will always detect immediately regardless of whether the room is occupied.

This unit has a 12-24VAC/DC low voltage power supply and provides an isolated voltage free contact output.

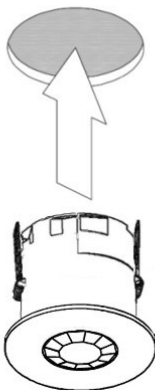
FLUSH FIXING

Warning - be careful bending springs when mounting unit.

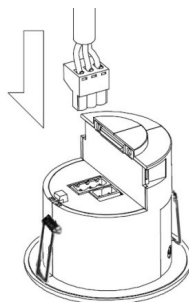


1

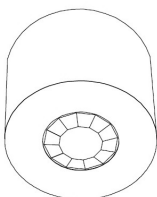
Hole Ø64mm



2

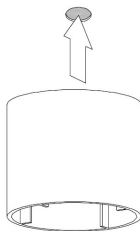


SURFACE FIXING

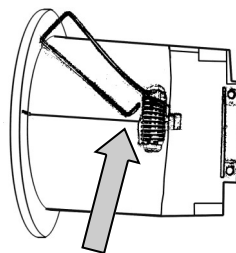


1

50mm or 60mm fixing centres



2

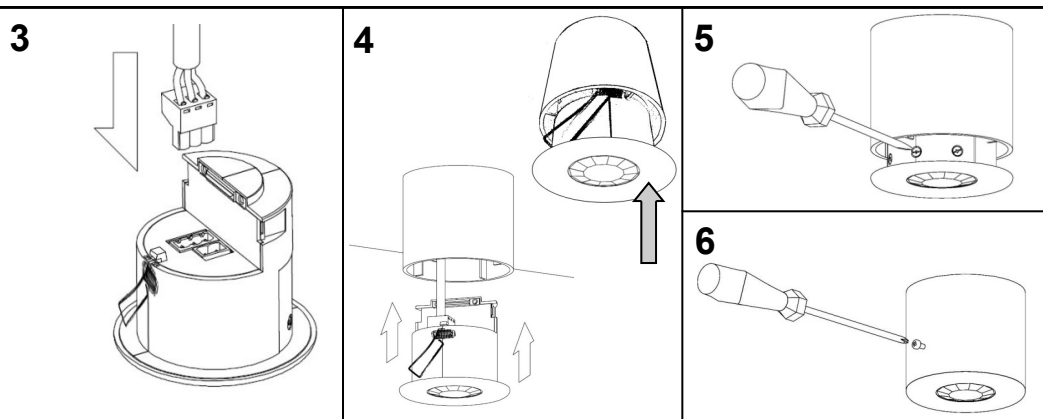
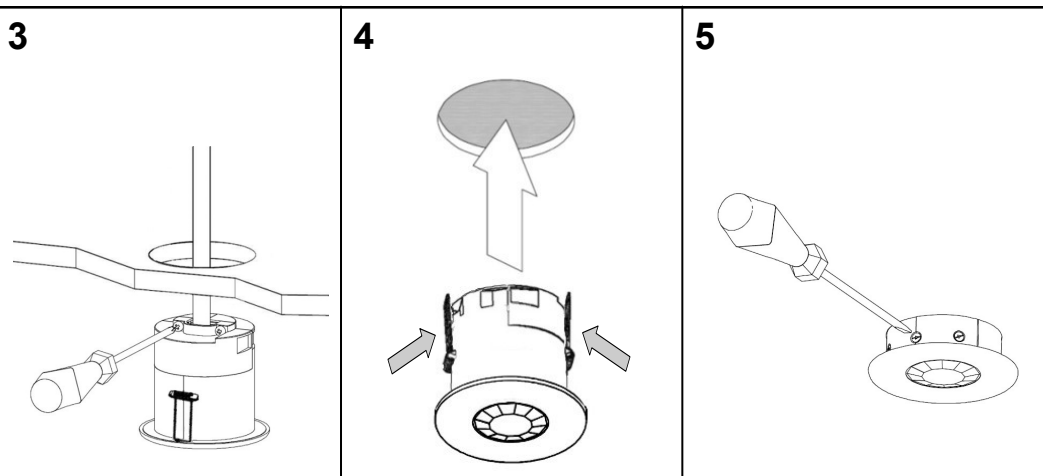


Pull out spring tab and rotate spring arm as shown

Installation

- The detector should be sited so that the occupants of the room fall inside the detection pattern shown overleaf, at a recommended height of 2.8m on the ceiling. Note that the lower the sensor is installed the smaller the detection range will be, subject to the parameters shown on the diagram.
- Avoid direct sunlight entering the sensor.
- Do not site within 1m of forced air heating or ventilation.
- Do not site within 1m of any lighting.
- Do not fix to a vibrating surface.
- Wire the product using the connector using the diagram on the front page.
- Mount using one of the two options above.
- To switch from more than one position simply wire two or more units in parallel.

- For lux enabled products, set the minimum.
- Power the unit up—the load should be on.
- Vacate the room or remain very still (should take no more than 2 minutes).
- Check that the load switches on.
- To set the final LUX level wait until the room is dark enough that lighting is required. Then, with the lights on, adjust the LUX level (at minimum), very slowly until the lights come on. Note that when the lights come on, the lights will **always** come on with the next light switch.
- Set the time required.



the LUX level to maximum and the time to
 should come on immediately.
 still and wait for the load to switch off
 (utes).
 when movement is detected.
 until the level of natural daylight is just
 Starting with the LUX control fully clock-
 turn the control anti-clockwise until the
 the LUX control is at maximum then the
 occupancy.

LOAD DOES NOT COME ON

Check to see if the live supply
 to the circuit is good. Strap
 across the *L* and *LIVE OUT*
 terminal to turn the load on.

If the supply and wiring are
 good, check the LUX level
 setting. Increase the LUX level
 setting to allow the controller to
 turn on at higher ambient natu-
 ral light level.

If the detection range is smaller
 than expected, check the dia-
 gram above. Rotating the sen-
 sor slightly may improve the
 range.

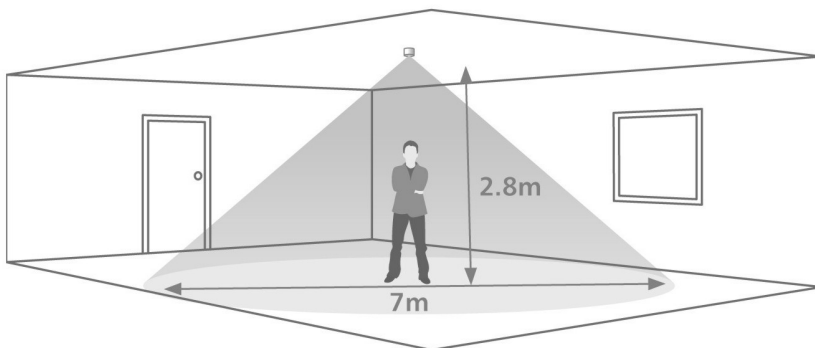
LIGHTS DO NOT GO OFF

Ensure that the area is left
 unoccupied for longer than the
 selected timer setting.

Make sure that the sensor is
 not adjacent to circulating air,
 heaters or lamps.

Fault Finding

Detection Pattern



Area of high sensitivity Area of lower sensitivity

Specification

LOAD

6 Amp resistive load
2 Amp inductive load

SUPPLY VOLTAGE 12-24V AC/DC (+/- 10%)

TIME OUT PERIOD Adjustable 10s to 30m

LIGHT LEVEL Light to dark

TERMINAL CAPACITY 2.5 mm²

MATERIAL Flame retardant ABS

TYPE Class 2

TEMPERATURE -10°C to 35°C

CONFORMITY EMC-89/336/EEC

LVD-73/23/EEC



Part Numbers

EBDSPIR-24V-VFC Ceiling mounted presence detector with lux
EBDSPIR-24V-NL-VFC Ceiling mounted presence detector no lux
DBB Surface mounting back box

IMPORTANT NOTICE!

This device should be installed by a qualified electrician in accordance with the latest edition of the IEE wiring regulations.



C.P. Electronics Ltd

Brent Crescent

London

NW10 7XR

United Kingdom

Tel: + 44 (0) 333 900 0671

Fax: + 44 (0) 333 900 0674

www.cpelectronics.co.uk

enquiry@cpelectronics.co.uk

Due to our policy of continual product improvement CP Electronics reserves the right to alter the specification of this product without prior notice.

Ref #WD215 Issue 3