

UK Subject to change

Document Ref:
FRS600N/70335/PMR52/Issue 1/Jan 03

Copyright ©
These instructions are the sole property of Ferm-Omega Tools and may not be reproduced

USER'S MANUAL

Ferm All Purpose Saw

FRS-600N

CE



Ferm[®]

Art.nr. 726620
Screwfix Art.nr. 70335

**ALL PURPOSE SAW FRS-600N
USERS MANUAL**

TECHNICAL SPECIFICATIONS


Voltage	230 V~
Frequency	50 Hz
No load speed	700 to 2300 rpm
Power Input	600 W
Weight (no packing/no blade)	3.5 kg
Height	215 mm
Length	400 mm
Width	100 mm
Maximum Cut (wood)	150 mm
Maximum Cut (steel)	10 mm
Lpa (sound pressure level)	90.4 dB(A)
Lwa (sound pressure capacity)	103.4 dB(A)
Vibration value	6.3 m/s ²


PRODUCT INFORMATION



SAFETY INSTRUCTIONS


The following symbols are used in these instructions for use:

 Denotes risk of personal injury, loss of life or damage to the tool in case of non-observance of the instructions in this manual.

 Denotes risk of electric shock.

Carefully read this manual before using the machine. Make sure that you know how the machine functions and how to operate it. Maintain the machine in accordance with the instructions to make sure it functions properly. Keep this manual and the enclosed documentation with the machine.

Ferm products are manufactured to high quality standards they are safe and fit for purpose at time of sale, but all tools can be dangerous if the correct precautions are not taken. Always follow these instructions, do not carry out the operation until you are sure you can do so in safety. Remember to consider the work environment for safe operation as well as safety for tool use.

 **Warning!** When using electric tools, basic safety precautions should always be followed to reduce the risk of fire, electric shock and personal injury. Read all these instructions before attempting to operate this product. Save these instructions for future reference.

PERSONAL SAFETY
Use Personal Protection Safety Equipment
Protect eyes with safety glasses or goggles.

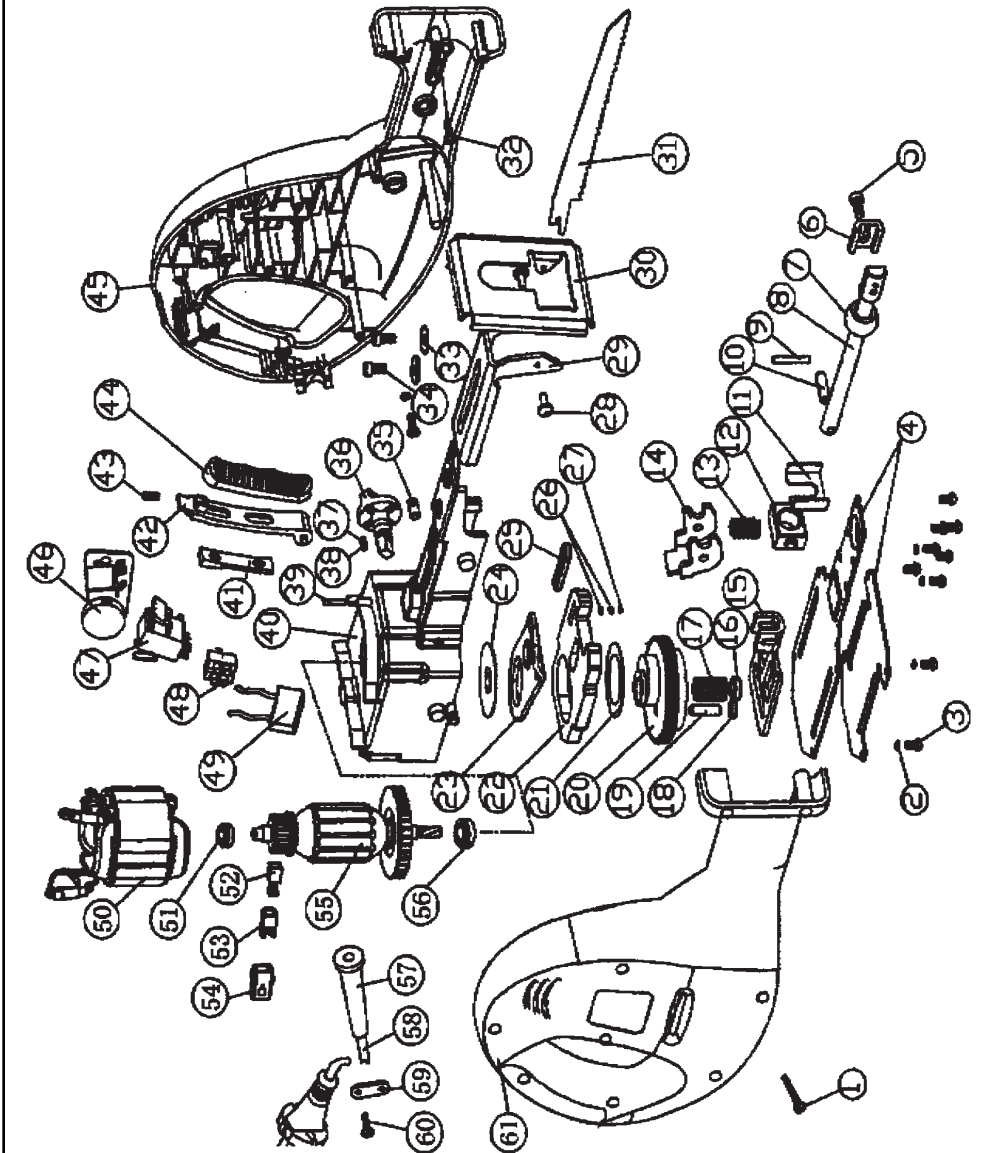
Note: The use of safety protective eyewear without the CE mark or prescription glasses can lead to serious injury if the lens breaks.

A suitable dust mask should be worn if cutting, drilling or sanding is dusty, in particular chipboard or MDF. Approved safety footwear and headgear should be worn as appropriate, for example on building works or when heavy weights are involved. Wear suitable gloves and apron to protect against sparks/debris. Wear earplugs or ear defenders.

Dress properly
Do not wear loose clothing or jewellery; it can get caught in moving parts. Non-slip footwear is recommended when working out doors. Wear protective hair covering or tie back long hair.

Stay alert
Watch what you are doing; use common sense. Do not operate tools when tired or after taking alcohol or prescription/ non-prescription drugs.

EXPLODED VIEW



SPARE PARTS LIST FRS-600N

REF NR	DESCRIPTION	FERM NR
	408730 SOCKET HEAD SCREW	005
408731	HOLD DOWN PLATE	006
408732	SAW MECHANISM COMPLETE	007 T/M 10+12+15
408733	SPRING	013
408734	NEEDLE ROLLER BEARING	017
408735	BIG GEAR + PIN	019 + 020
408736	LIFTING KNIFE PLATE	023
408737	GUIDE BLOCK	025
408738	BAFFLE COMPLETE	028 + 029 + 030
408740	LOCALIZING PIN	035
408741	PENDULAR BUTTON	036
408742	THIMBLE	037
408743	SPRING	038
408744	SWITCH DRAW BAR COMPLETE	041 T/M 044
408745	CIRCUIT PLATE	046
408746	SWITCH	047
408747	STATOR	050
800607	BEARING 607 Z	051
408748	CARBON BRUSH SET	052
408749	CARBON BRUSH HOLDER	053 + 054
408750	ROTOR	055
806000	BEARING 6000 Z	056
408751	SOCKET SCREW KEY	—

OPERATIONAL SAFETY



Warning! Always use a suitable dust mask and eye protection in addition to other safety equipment when using this saw. Never use the machine for sawing asbestos. If asbestos is discovered or suspected, contact your local council for advice.

Concentrate

Routine and repetition can lead to mistakes. Remember that a slight lack of concentration can result in serious injuries in a split second.

Keep work area clean

Cluttered areas and benches invite injuries.

Consider the work environment

Make sure you work on a stable base. Do not use tools, which require two-handed operation on ladders. If you use a ladder ensure it's at a safe angle and secured at the base and to the building or structure. Do not expose power tools to rain or use them in damp or wet locations. Keep work area well lit. Do not use power tools in the presence of flammable liquids, vapours or gases.

Guard against electric shock

This unit contains dangerous voltages. Use a RCD (residual current device) to provide protection against electrical shock. Prevent body contact with grounded surfaces (e.g. pipes, radiator, ranges or refrigerators).

Keep children and pets away

Do not let children or pets come into contact with the tool, extension cable or work area.

Do not force the tool

It will work better and safer at the rate for which it was intended.

Use the right tool

Do not force small tools or attachments to do the job of a heavy-duty tool. Do not use tools for purposes for which they were not intended; for example do not use a circular saw for cutting trees or logs.

Do not abuse the plug and cable

Never carry the tool by the cable or pull it to disconnect it from the power socket. Keep the cable away from heat, oil and sharp edges. Do not touch the metal plug pins when connecting or removing the plug.

Secure Work

Use clamps or a vice to hold work. It is safer than using your hand and it frees both hands to operate the tool.



Be aware that this saw is a powerful machine. You must use two hands to control it.

Do not over-reach

Keep a proper footing and balance at all times.

Disconnect tools from power supply

When not in use, before servicing and when changing accessories such as blades, bits and cutters.



Always switch off and unplug the saw from the power supply before making adjustments or changing blades.

Remove adjusting keys and wrenches

Ensure that they are removed from the tool before switching on.

Avoid unintentional starting

Do not carry plugged in tools with your finger on the switch. Check that the switch is off before plugging in to socket.

Extension cables

Use only three core earthed extension cables suitable for the power input of the tool (minimum cable size 1.5mm²). Plug into an earthed socket only. Use a RCD (residual current device) to provide protection against electrical shock. When using a cable reel unwind it fully. Do not use long extension cables.

Outdoors use

If the tool is suitable to be used outdoors, only use an extension cable intended for outdoor use and marked accordingly. Use a RCD (residual current device) to provide protection against electrical shock. Do not use in rain or damp conditions.

Connect a dust extraction device

Whenever there are facilities for fitting a dust or fume extraction system, make sure it is connected and used.

Use recommended accessories

The use of any other accessory or attachment other than recommended in the instructions or catalogue may present a risk of personal injury. Use extension cables suitable for the power input of the saw (minimum cable size 1.5mm²). When using a cable reel unwind the cable fully.

BEFORE USING THE SAW



This saw is designed for hand held use only. Do not fix to bench with clamps or vice.



Ensure the saw is unplugged from mains.

Check for damage

Before using this item check each part listed is undamaged.

Save packaging

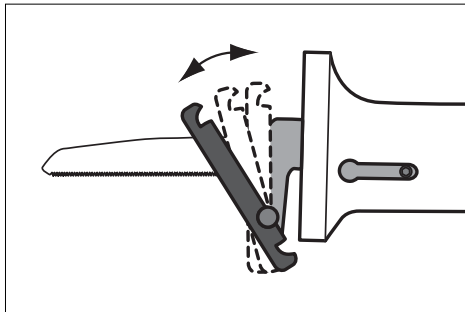
Save major packaging for return of product for service or repair. Remove all the internal packing, which protects the saw in transit.

TO ADJUST THE FOOTPLATE ANGLE



Ensure the saw is unplugged from mains.

Move the footplate by hand to desired angle as shown below.



CHANGING/FITTING SAW BLADES



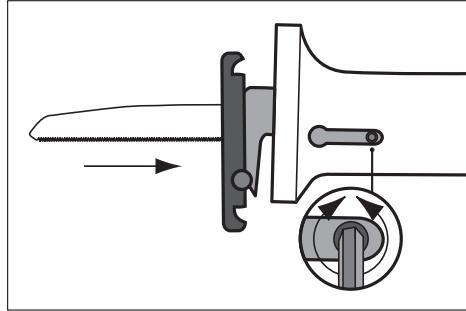
Ensure the saw is unplugged from mains.

The saw is supplied with 3 wood cutting blades (coarser teeth) and 1 metal cutting blade (finer teeth). Spare blades in varying lengths and for different purposes, generically referred to as 'Sabre Blades' are available from the Helpline or Tools Catalogues.

To fit a blade

- Loosen the screw with 4mm hexagon wrench provided.
- Insert a suitable saw blade as far as it will go into the slot between the stroke rod and clamping plate. The saw teeth should face downwards as in the illustration in Section 7.
- Make sure the securing screw on the stroke rod engages in the hole in the saw blade.
- Test that the blade is secure by screwing the screw home and trying to pull the blade out, if it is secure tighten the screw with the wrench.

When changing blades make sure that the blade slot and stroke rod are free from sawdust, swarf etc.



OPERATING THE SAW

BEFORE OPERATING

- Check the voltage on the saw corresponds with your power supply voltage and that the plug and lead are in good condition.
- Check you have the correct type of saw blade for the machine and that it is mounted correctly.
- Do not use parts other than supplied with the machine to make the blade fit properly.
- Check you have a blade suitable for the material being cut and that it is in good condition.
- Run idle for 30 seconds. If there is any abnormal vibration or other fault, switch off, inspect and rectify before continuing.
- Route the mains lead
- Keep the mains lead away from the saw and ensure that it cannot get caught in the work piece or blade.

OPERATION

Before starting

- Make sure you are wearing appropriate safety equipment and have read and understand all these instructions.
- Plug into a suitable mains supply and switch on at mains socket.
- Be aware that this machine has a powerful motor and needs two hands to operate it safely.

To switch the saw ON

- Hold the front handle with one hand and the rear handle with the other press the On/Off slide switch downwards with your forefinger.

To switch OFF

- Release the On/Off slide switch.

To Control Speed (stroke rate)

- Rotate the speed control wheel.

Wheel position I is slow - max is fast. The speed required depends on the material being cut and the blade used, as a general guide start slow and increase until the best speed is found.

The speed can be altered while the saw is running but not while it's under load i.e. cutting.

To control Pendulum Action

- Turn the control knob to position required - '0' (least) to 3 (most)

As a general guide use:

- Lower Settings for softer materials (wood etc)/coarser blades.
- Higher Settings for harder materials (steel)/finer blades.

Test the setting first on a piece of scrap to find the best settings for the material and blade being used.

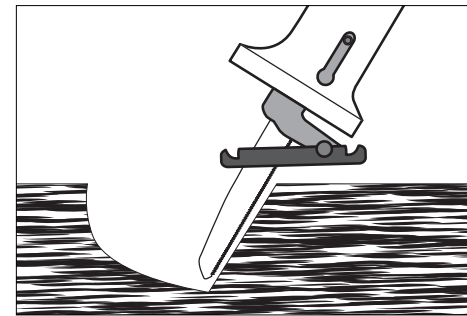
MAKING A CUT

- With the work piece firmly secured, place the hinged base plate on the surface.
- Switch on and let the blade come to full speed before starting the cut.

Plunge Cutting

Plunge cutting is only possible with soft materials such as plasterboard, wood and aerated concrete etc.

- Before cutting the work piece, practice on scrap material first to determine if plunge cutting is suitable for the material/blade being used.
- Use short blades for plunge cutting.
- Ensure the bottom edge of the footplate rests on the work piece.
- Start the saw with the blade not touching the work piece. Then slowly rotate the saw to begin the cut as shown below.
- Gradually move the saw to a vertical position and continue cutting along the line.
- When the cut is finished, switch off and withdraw the saw when the blade has stopped moving.



DURING USE

- Place the blade gently onto the work piece. This is a powerful machine and will kick if the blade is pressed too hard, jammed in the cut or the tip of the blade touches the work piece or any surface when the saw is running.
- Always use two hands to control the machine.
- Adjust the speed and pendulum action to suit the material and profile of the cut.
- Tight radius cuts require narrow saw blades.
- Check material for foreign bodies. For example check wood, plasterboard and building materials for nails screws etc.
- Check for services. Make sure that there no electrical wires, water or gas pipes in the material being cut.
- Apply suitable lubricant, when cutting metal or hard materials.
- Do not use water as a lubricant/coolant.
- Clamp material properly.
- Do not use hand or foot to support the work piece.
- Keep the footplate on the surface of material.
- Use constant gentle pressure.
- If the blade seizes in the cut, switch off /unplug and open the cut with a suitable tool before pulling the blade out. Never switch the saw on with the blade jammed.
- Reciprocating blade. Be aware of backlash if you touch the floor or workpiece with the saw running.
- Do not put the machine down with the motor still running.
- Do not put the machine down on a dusty surface, dust will get into the air vents and damage the motor.
- Regularly inspect the blade during use (switch off first) for signs of damage or wear and replace when required.
- Switch the machine off before removing the plug from the mains socket.
- Be careful. Do not point the saw at yourself or other people. Keep your hands away from the blade.
- Saw away from yourself.
- Think safety
- Consider the work environment, personal safety and operational safety. Do not take risks.

MAINTENANCE, CARE AND REPAIR



Switch off and unplug the machine before carrying out any cleaning, adjusting or changing blades.

CLEANING

Do not use flammable liquids to clean the saw.
Clean by brushing with a soft brush.

FAULTS

Switch OFF immediately at the mains plug and remove the plug when:

- The plug or cable is damaged.
- The switch on the machine is defective.
- You smell or see smoke caused by scorched insulation in the machine.
- There are no user serviceable/repairable parts in this unit.

Qualified service engineers must carry out repair and servicing.

MAINTAIN TOOLS WITH CARE

Keep the tool clean for better and safer performance. Store the blades properly in accordance with the maker's instructions. Follow instructions for changing accessories. Inspect tool and extension cables periodically and if damaged, have them repaired by a qualified person or authorised service body. Keep handles free from oil or grease. Keep the ventilation slots clean to prevent the motor overheating.

Check for damaged parts

Do not use a tool with damaged parts, before further use a damaged tool must be carefully checked by a qualified person to determine that it will operate properly. Check for alignment of moving parts, binding or breakage of parts, mounting and other conditions that may affect its operation. A damaged part or guard should be properly repaired by an authorised service centre, unless indicated otherwise in the instruction manual. Have defective switches replaced by an authorised service centre. Do not use a tool if the switch does not turn on and off.

Have your tool repaired by an expert

This appliance is manufactured in accordance with relevant safety standards. Only experts must carry out repairing of electrical appliances, otherwise considerable danger for the user may result.

Storing tools

When not in use tools should be stored in the dry, out of reach of children.

LUBRICATION

The machine requires no user lubrication.

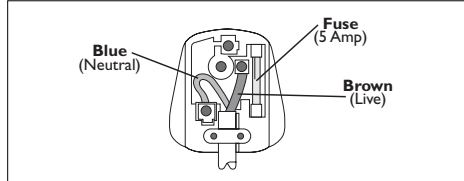
ELECTRICAL INFORMATION

This product is complete with a pre-wired mains plug, it is double insulated in accordance with EN 50144, no earth wire is required. If the plug needs replacing follow these instructions.

Wire correctly

The wires in the mains lead are coloured in the following way:

- BLUE** • Neutral
BROWN • Live



Securing wires

Secure wires carefully and firmly to the correct terminals. Secure the mains cable in the plug cord grip firmly. Fit a 5-amp fuse. If a 13amp (BS1363) plug is used a (BS1362) approved 5-amp fuse must be fitted. **If in doubt consult a qualified Electrician.**

Recycle/Dispose of old plug and cable

Prevent inadvertent connection to socket and risk of electric shock.

ENVIRONMENT

Recycle the packaging according to the identification marks on it.

At the end of the product or its accessories life please recycle where facilities exist. **Phone the Helpline for current advice on recycling.**

HELPLINE

For any queries relating to operational or safety matters contact:

Ferm Customer Helpline on: **01159661199**
Monday-Friday **8am – 6pm**
Saturday **9am – 1pm**

GUARANTEE

The guarantee conditions can be found on the separately enclosed guarantee card.



We declare under our sole responsibility that this product is in conformity with the following standards or standardized documents

**EN55014-1, EN55014-2,
EN50144-1, EN50144-2-11,
EN61000-3-2, EN61000-3-3**

in accordance with the regulations.

**98/37/EEG
73/23/EEG
89/336/EEG**

from 16-12-2002
GENEMUIDEN NL
W. Kamphof
Quality department