



**AZTECH CONVERTING SYSTEMS**

212 W Lodge Drive

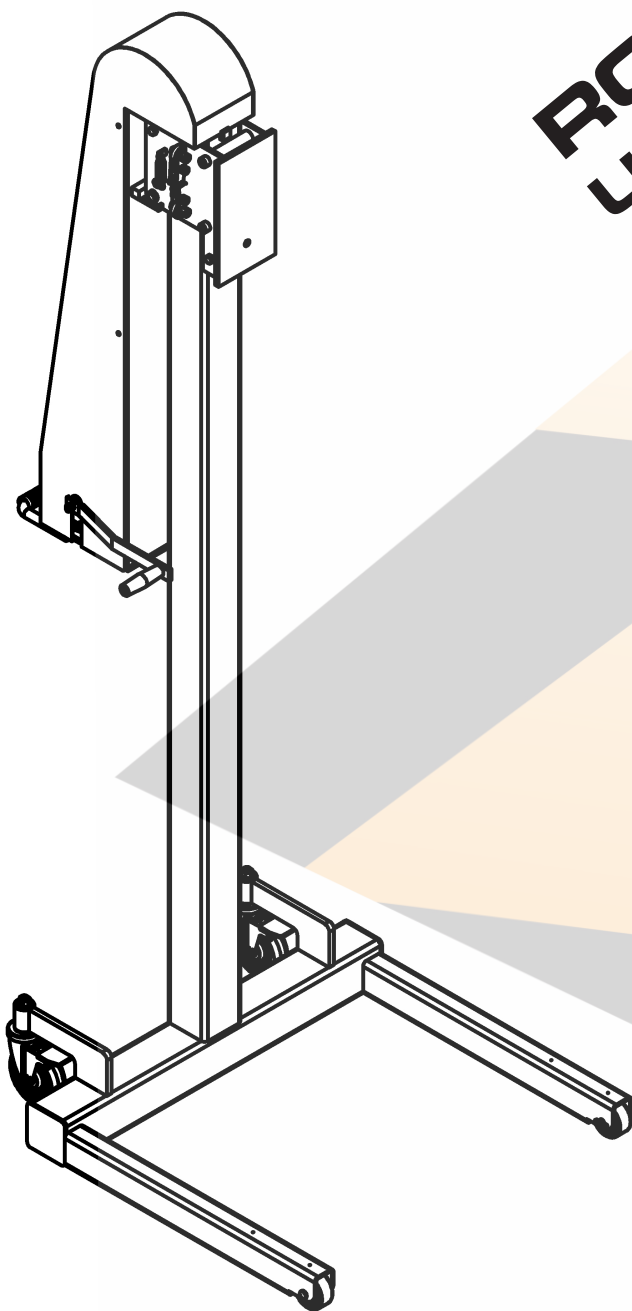
TEMPE, AZ 85283

PHONE (480) 951-8351

FAX (480) 998-5409

[www.aztechconverting.com](http://www.aztechconverting.com)

**ROLL RUNNER**  
**User Manual**  
**MH-800**





# **AZTECH CONVERTING SYSTEMS**

**MH-800  
USER MANUAL**

---

## **TABLE OF CONTENTS**

<b>SECTION 1: GENERAL INFORMATION</b>	<b>1-4</b>
<b>SECTION 2: MACHINE SETUP</b>	<b>4</b>
<b>SECTION 3: MACHINE OPERATION</b>	<b>5-9</b>
<b>SECTION 4: MAINTENANCE AND REPAIRS</b>	<b>10</b>
<b>SECTION 5: TROLLEY BRAKE DETAIL</b>	<b>11</b>
<b>SECTION 6: REPLACEMENT PARTS</b>	<b>12</b>
<b>SECTION 7: WARRANTIES AND SERVICE</b>	<b>13</b>



## Section 1: General Information

### 1-1: Introduction

The AZTECH RollRunner Model MH-800 Roll Handling Cart is designed and manufactured to help reduce workplace injuries by performing various material handling functions utilizing AZTECH's innovative quick-change attachment system. The RollRunner with its all-steel construction and simplistic design will prove to be an invaluable product for your work environment and is sure to provide your company many years of safe, dependable service.

### 1-2: Machine Information and Specifications

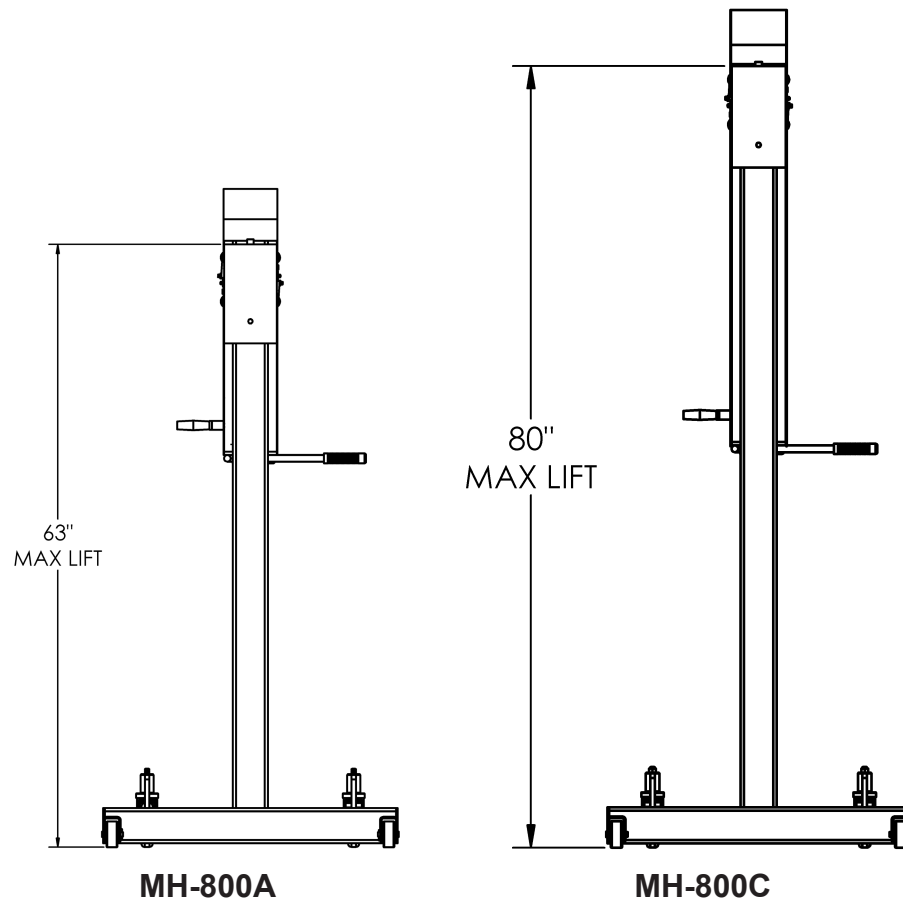


Fig. 1-1: MAX LIFT HEIGHTS

The MH-800 operates on a cable and winch lift system. The lift height is limited by the height of the upright boom. Currently, three different lift heights are offered. They are the 800A and 800C. Their respective maximum lifts are shown in Fig. 1-1.

The 800A and the 800C have similar footprints.



# AZTECH CONVERTING SYSTEMS

## MH-800 USER MANUAL

### MH-800A

**MAX LOAD:** 800 LBS (362 kg)

**MAX Lift Height:** 63 (160 cm)

**Dimensions:** 28.25 X 34 X 57.25

All dimensions are inches unless otherwise specified

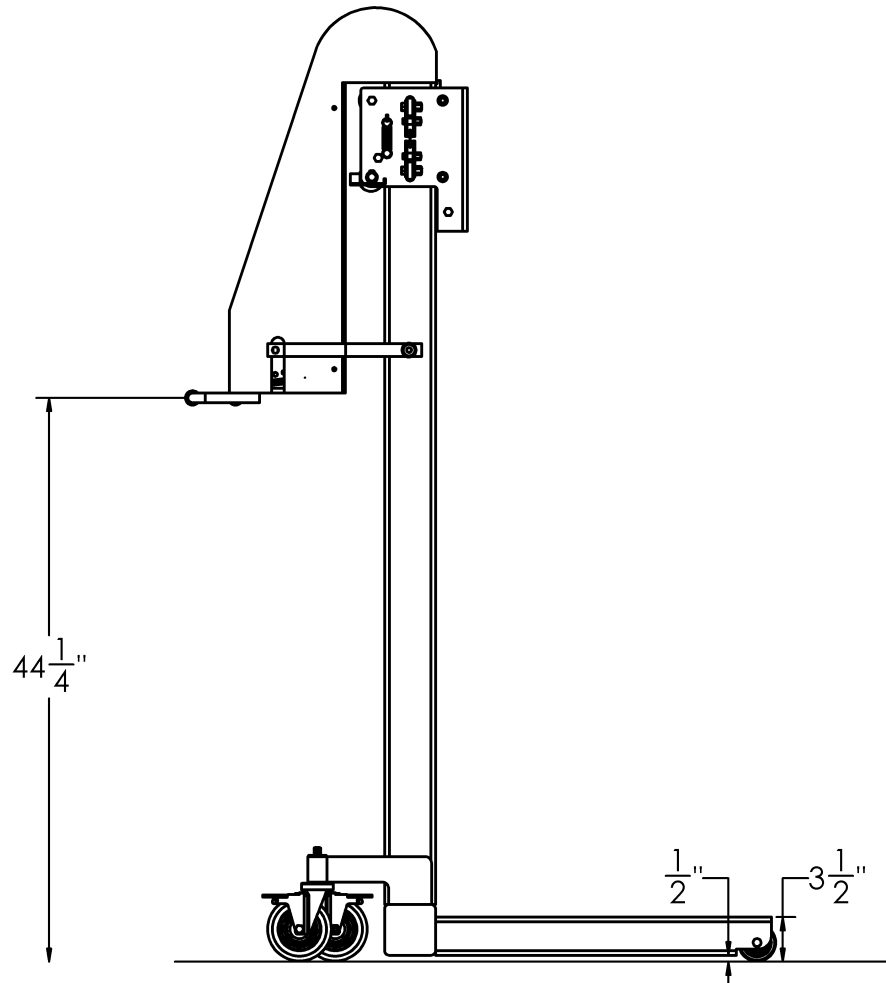
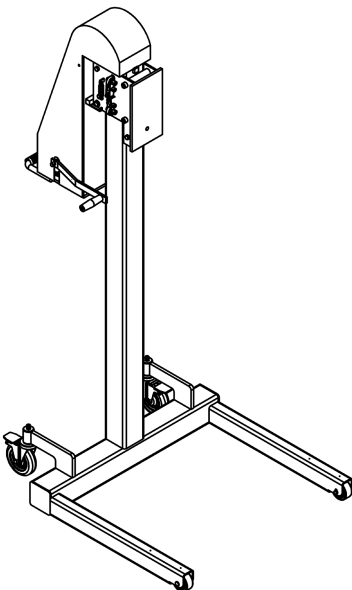
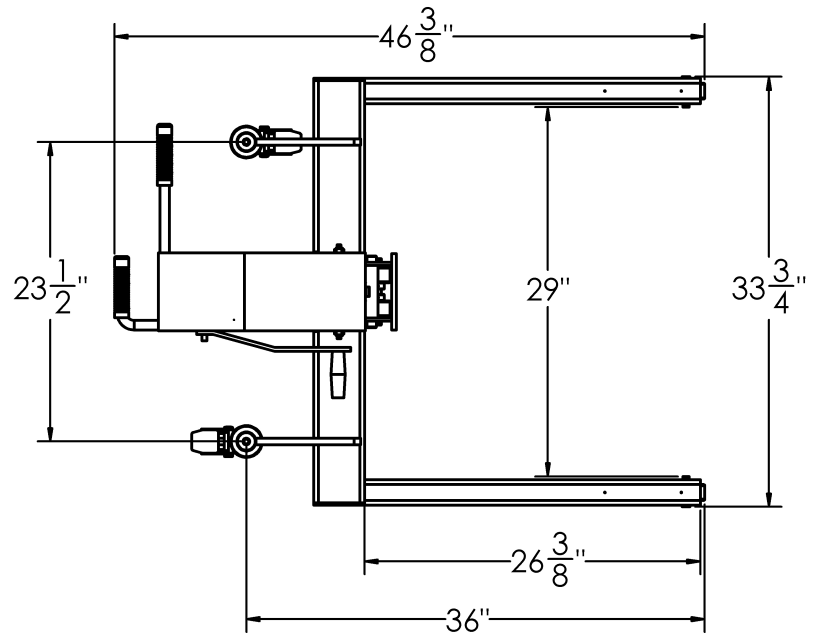
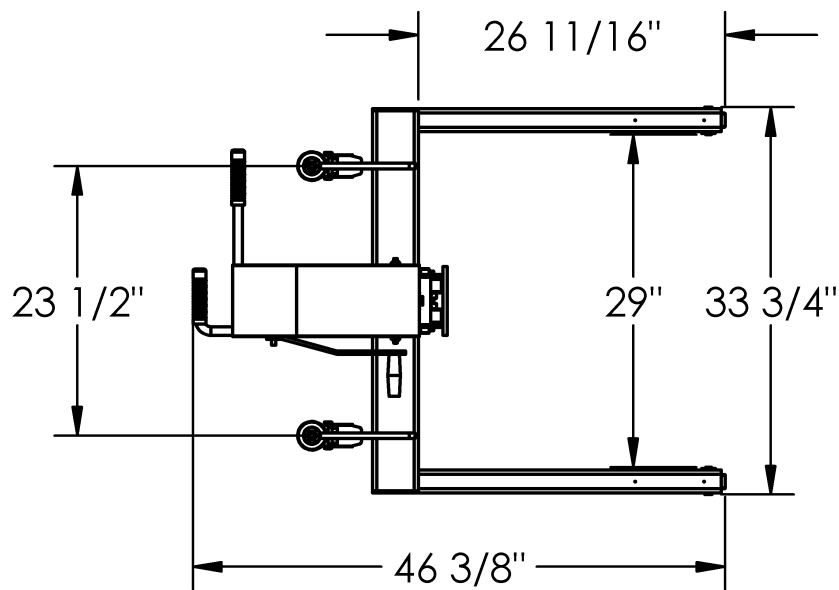


Fig. 1-2: THE MH-800A

# AZTECH CONVERTING SYSTEMS

MH-800  
USER MANUAL



## MH-800C

**MAX LOAD:** 800 LBS (362 kg)

**MAX Lift Height:** 80 (203 cm)

**Dimensions:** 28.25 X 34 X 50.75

All dimensions are inches unless otherwise specified

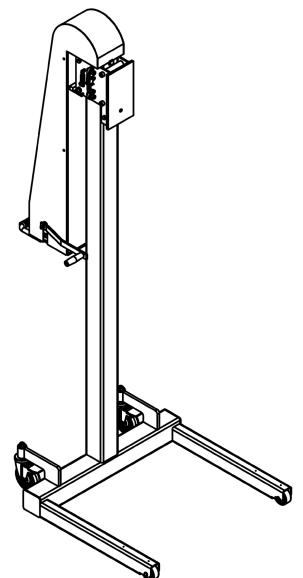
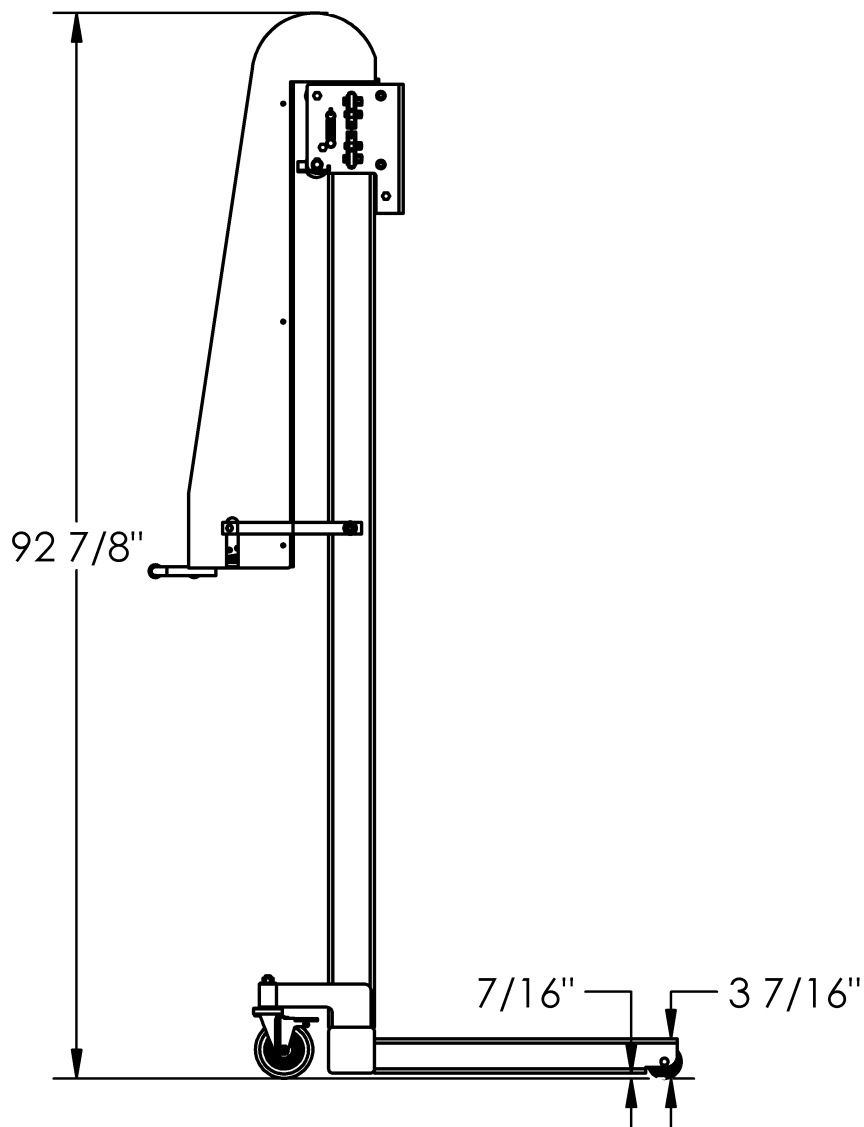


Fig. 1-3: THE MH-800C



# AZTECH CONVERTING SYSTEMS

## MH-800 USER MANUAL

### 1-3: Care and Maintenance

The RollRunner is relatively maintenance free, generally only requiring periodic inspections. Over time, you may need to replace the lift cable, which is simply performed by removing old cable and inserting the new cable and crimping at the open end.

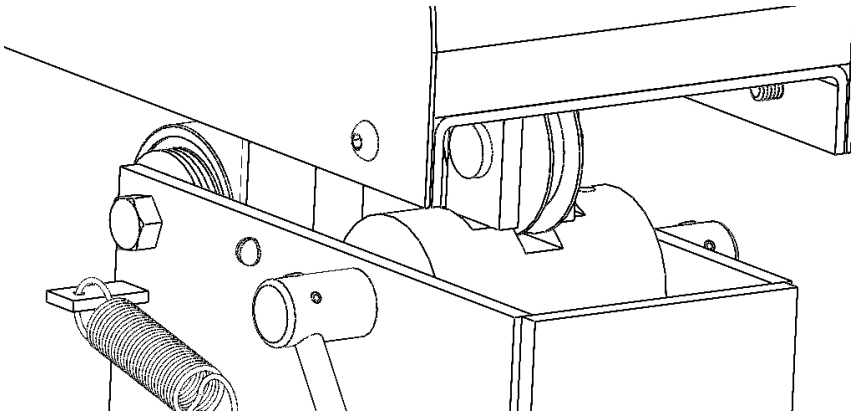


Fig. 1-5: SAFETY BRAKE DETAIL

### 1-4: Safety

The RollRunner is equipped with a safety brake which will automatically engage in the event of lift cable breakage. (See Figure 1-5)

## NEVER:

- Operate the ROLL RUNNER without the safety cover.
- Lift load over people
- Exceed the 400 LB weight limitation
- Use the ROLL RUNNER to transport people

## Section 2: Machine Setup

### 2-1: Uncrating & Inspection

After carefully removing your RollRunner from the crate, check to assure that all the bolts are tight and that no components have come loose during shipment. Carefully inspect all 4 wheels making sure they roll freely and are free of damage. If any visible damage has occurred in shipment, contact AZTECH immediately.

### 2-2: Safety Brake Inspection

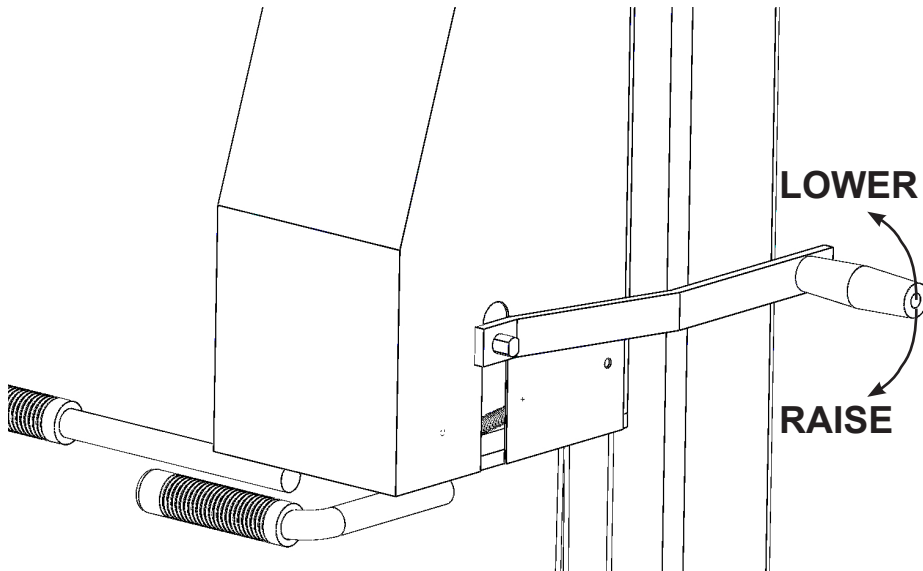
As noted in 1-4, your RollRunner is equipped with a safety brake which will prevent a load from falling in the event of a cable break. To assure it is working properly, check to see that the 2 springs that activate the safety brake have tension and are attached at both ends.

### 2-3: Winch & Cable Inspection

Before lifting a load for the first time, remove the protective winch cover and visually inspect to assure that the cable is seated properly in the grooves of the pulleys.



## Section 3: Machine Operation



### 3-1: Operating Lift

To operate the lift, turn crank handle clockwise to raise and counter-clockwise to lower. ( See Figure 3-1) When raising the lift, make certain that the winch makes a clicking sound.

This clicking denotes that the winch is performing properly.

Fig. 1-5: CRANK OPERATION

### 3-2: Rear Wheel Safety Brakes

The RollRunner is equipped with back wheel safety brakes which are to be used to hold the cart in place once in desired position and as a safety feature to keep the cart from rolling while in the stationary position. To operate, simply press handle down and snap into place to activate brake, and lift to de-activate brake.

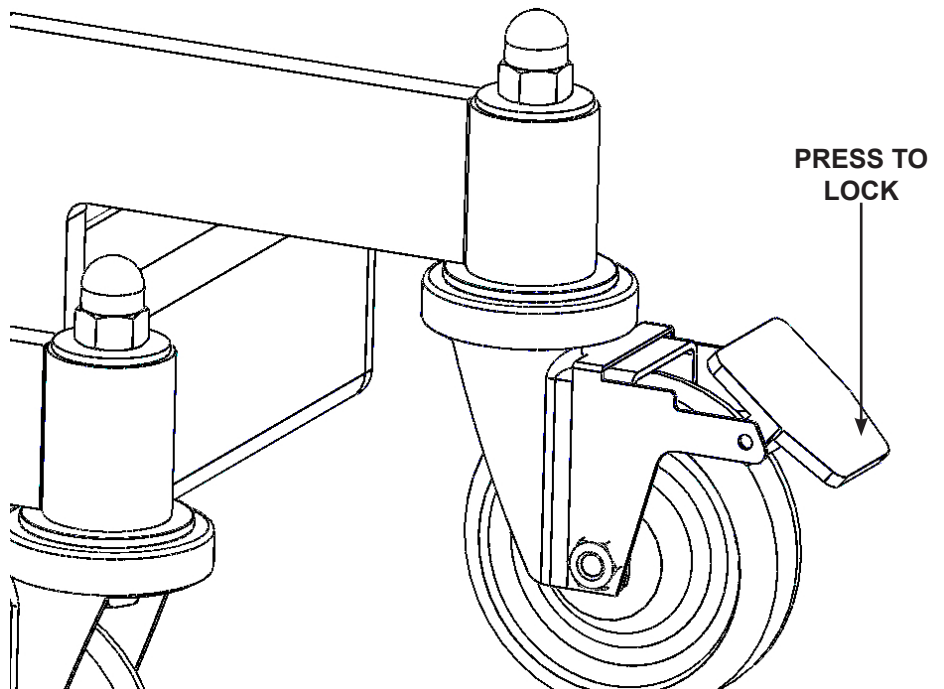


Fig. 1-5: SAFETY BRAKE



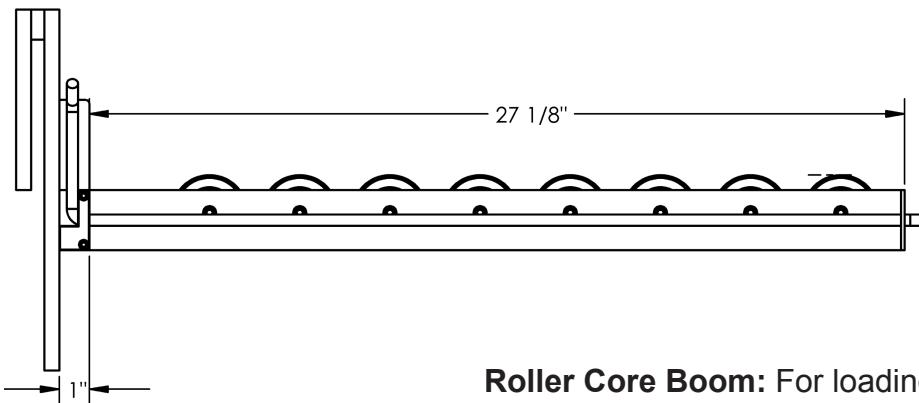
# AZTECH CONVERTING SYSTEMS

## MH-800 USER MANUAL

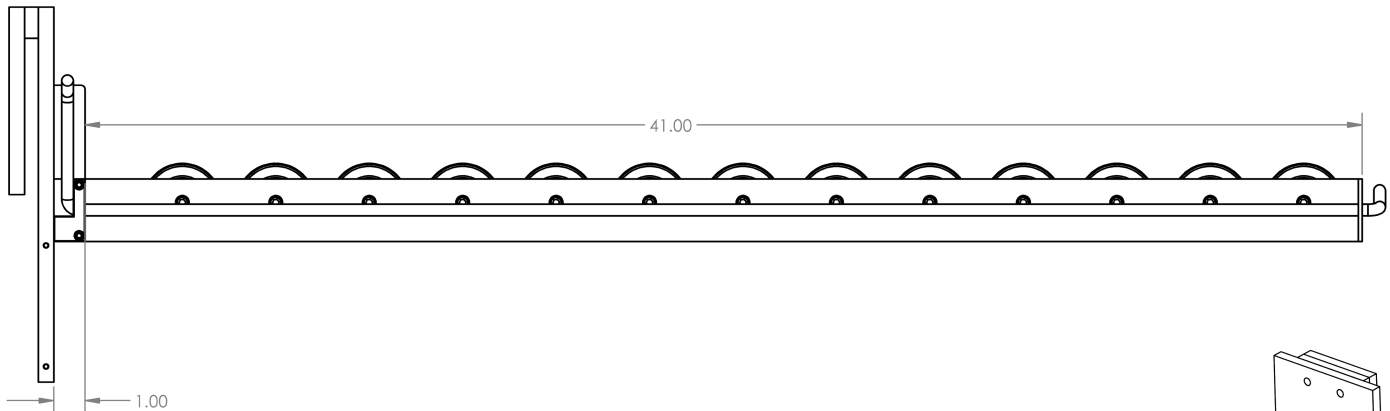
### 3-3 Changing Attachments

The Rollrunner utilizes a EZ Change Attachment System which makes it capable of performing numerous tasks. To change attachments, simply lift attachment off the trolley and lower into place making certain that retainer tab slides into the Slot at the top of the trolley.

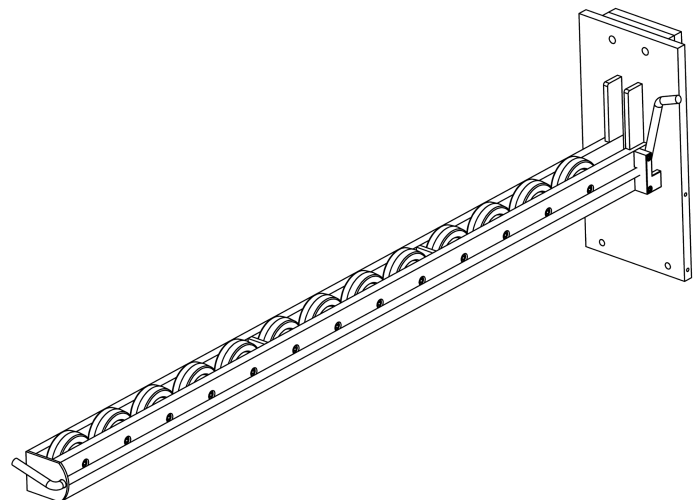
### 3-4: Available Attachments



**Roller Core Boom:** For loading and unloading rolls from the side position by supporting the roll through the roll's core.



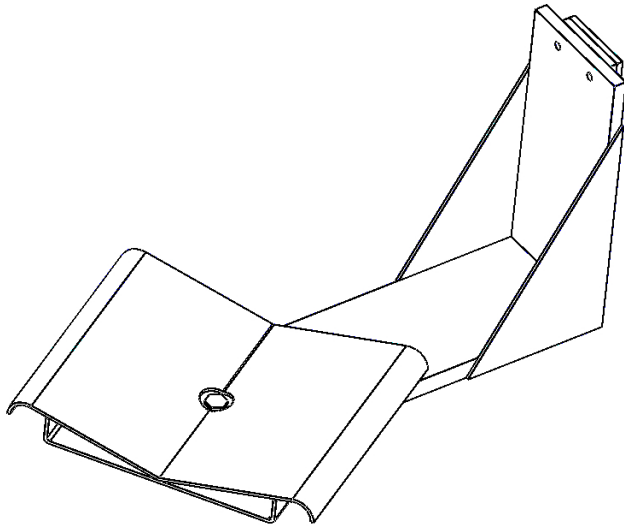
The Roller Core Boom may be ordered in several lengths up to 50" to best fit your application. Contact your AZTECH service representative for more details.





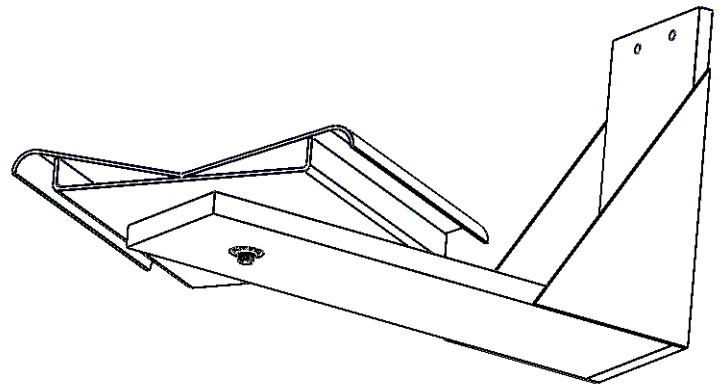
# AZTECH CONVERTING SYSTEMS

MH-800  
USER MANUAL



## 360 Degree Swivel-Cradle:

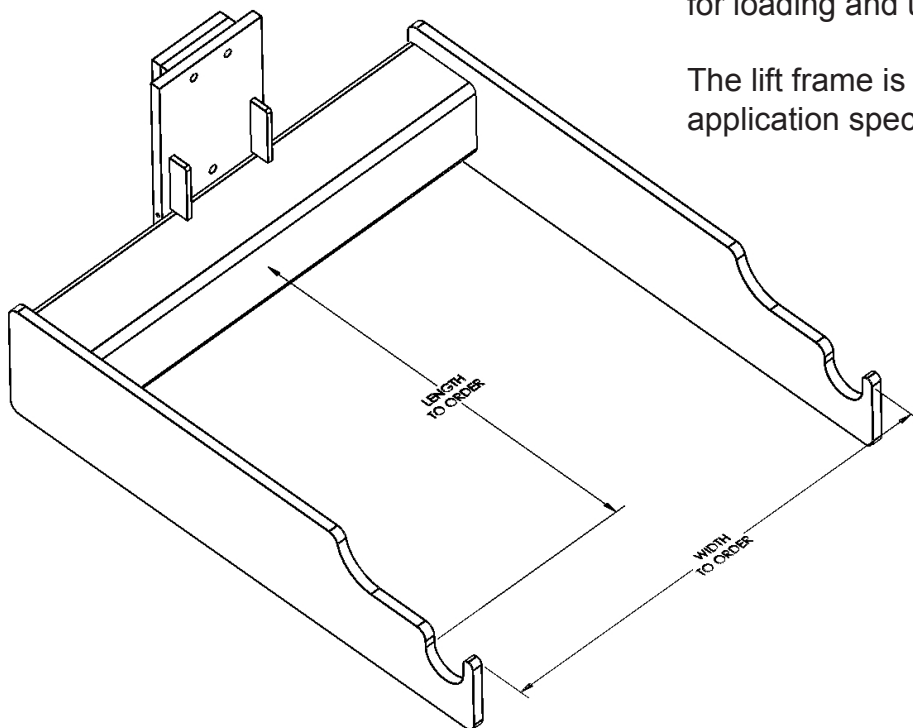
Supports the roll from the bottom and can be turned 360 degrees for precise alignment.



## TWO POINT LIFT:

Supports the roll through the arbor. Typically used for loading and unloading cradle-mount arbors.

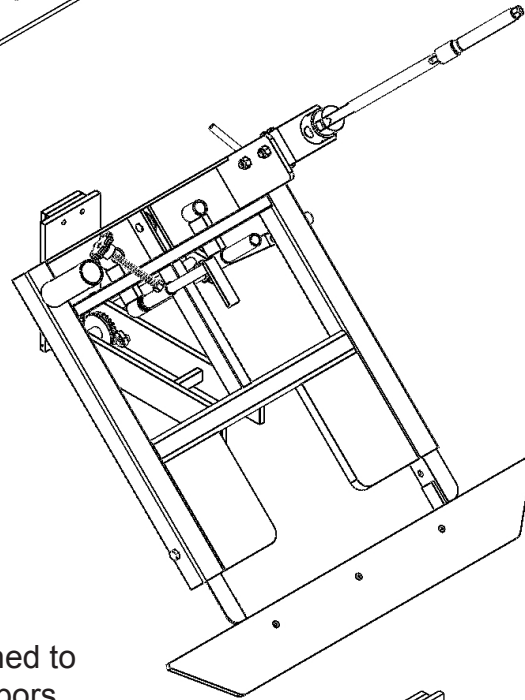
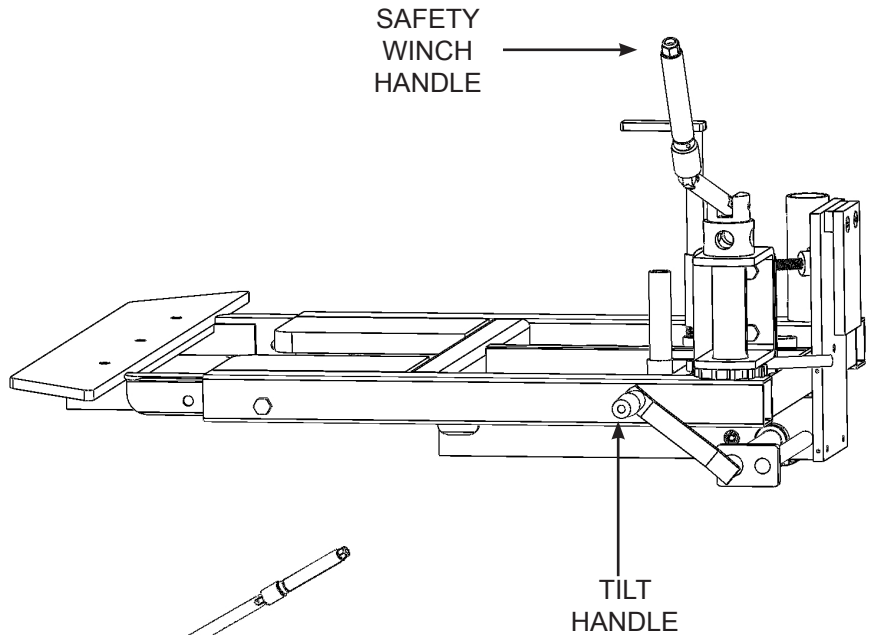
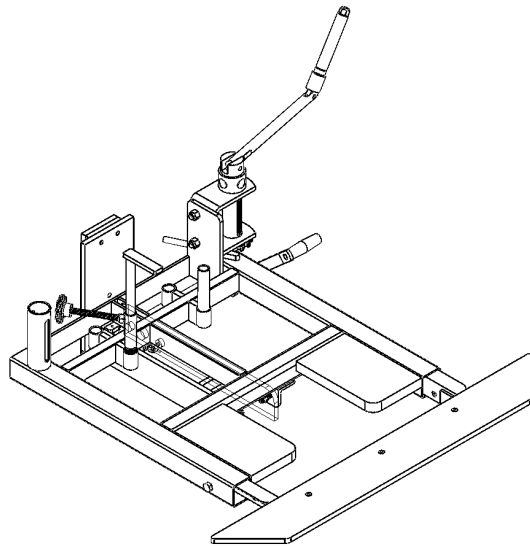
The lift frame is made to order, dimensions are application specific.





# AZTECH CONVERTING SYSTEMS

## MH-800 USER MANUAL



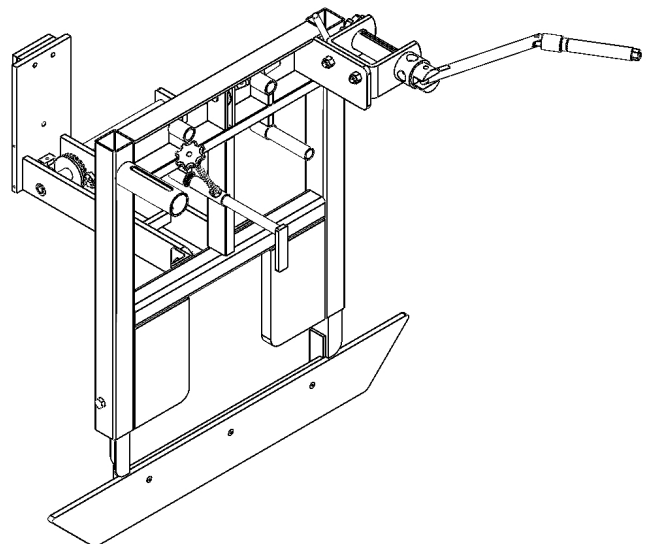
**DO NOT TILT LOAD  
WITHOUT SECURING  
WITH CABLE.**

### MH800 TILT PLATFORM

The Tilt Platform is designed to load rolls on horizontal arbors from the vertical position.

To operate, the roll is set flat on the platform, secured using the winch and cable, then rotated into position using the crank on the lift side.

The tilt platform may be ordered in either 300# or 400# capacities.



# AZTECH CONVERTING SYSTEMS

MH-800  
USER MANUAL



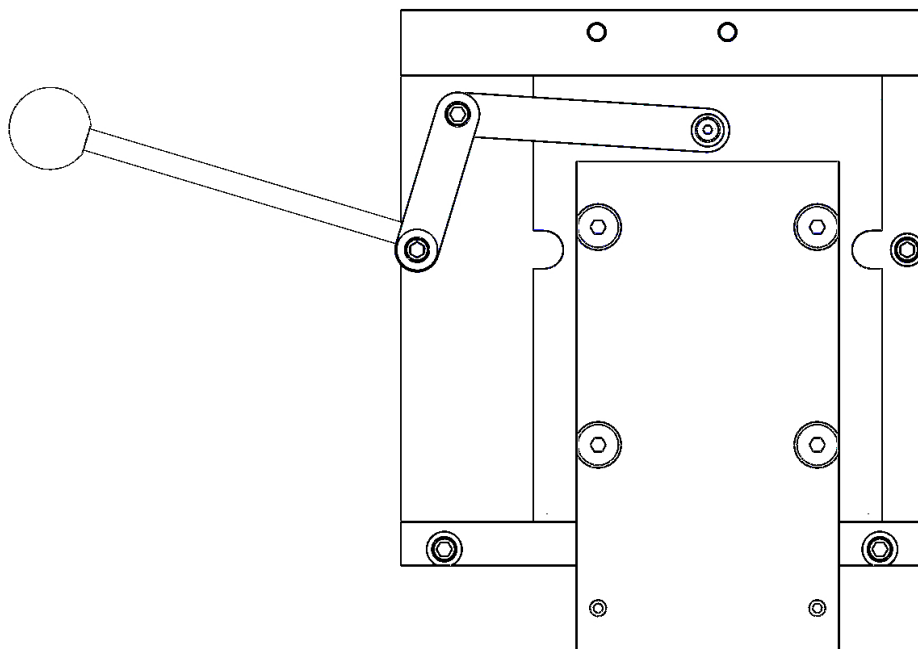
**BOOM ACCESSORIES MAY BE ORDERED INDIVIDUALLY.**

Please contact your AZTECH sales representative for more information.

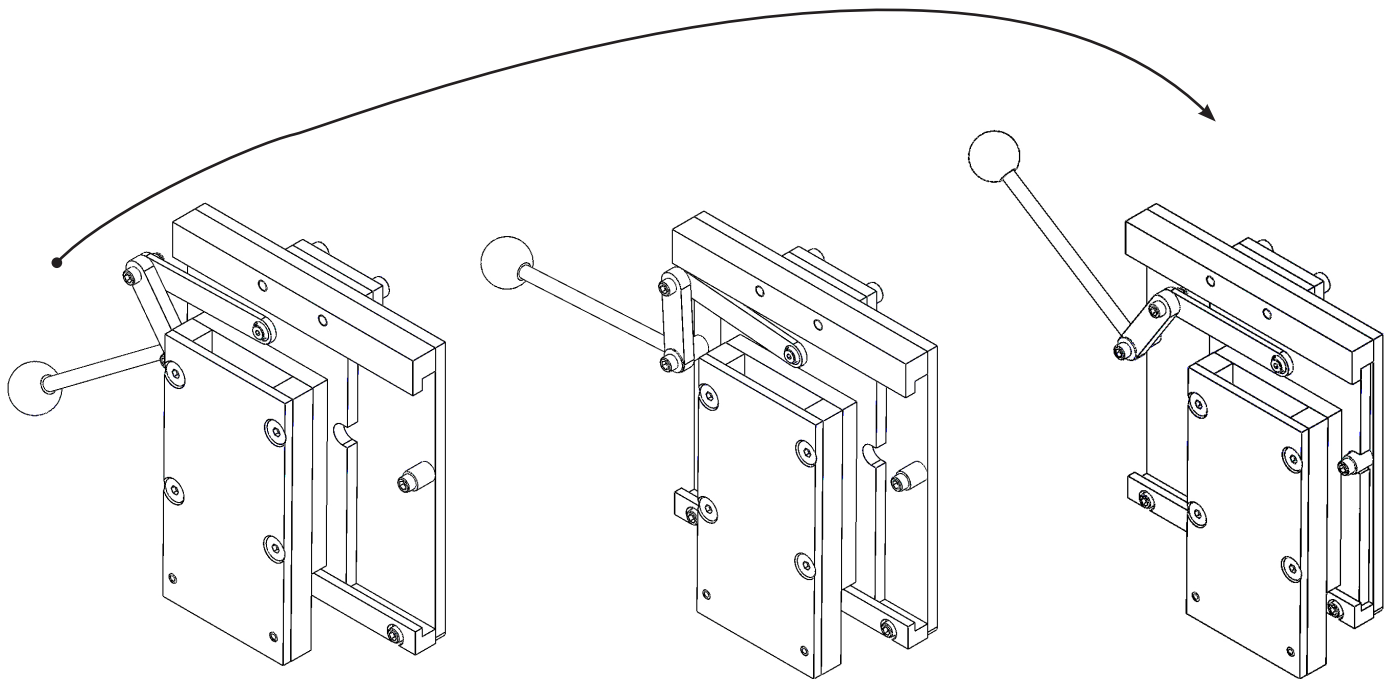
## MH800 SIDELAY SYSTEM

The Sidelay System is designed to avoid the need for tedious horizontal re-alignment of the roll while loading and unloading.

Moving the handle provides an adjustment range of 3.75".



*As you move the handle up...*



*...the attachment holder moves to the left.*



### Section 4: Maintenance and Repairs

#### 4-1 Periodic Inspections

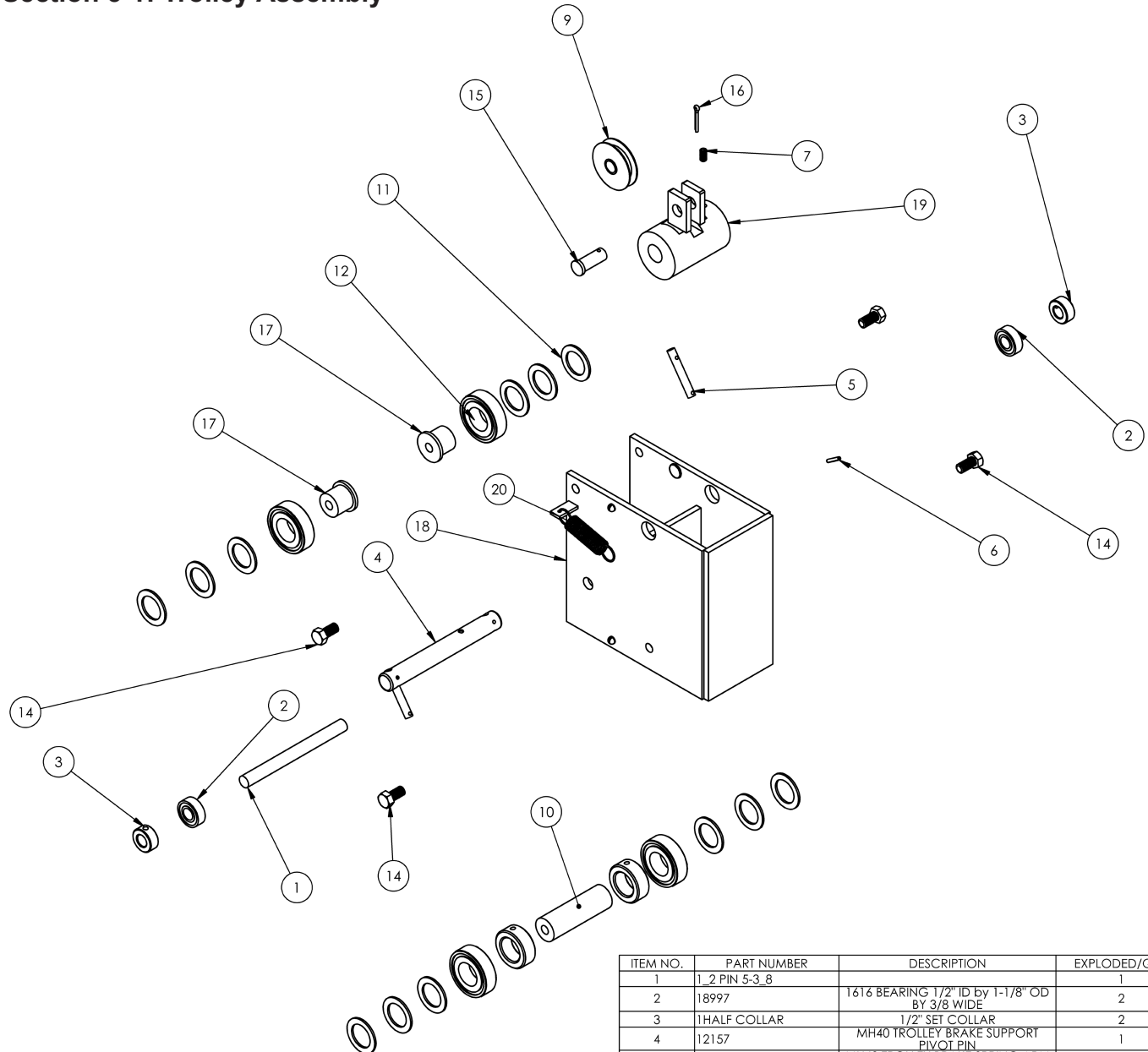
To keep your RollRunner operating properly, AZTECH recommends performing the following periodic inspection:

- Inspect cable for frayed strands or wear. If any are found, replace the cable immediately.
- Inspect the pulley on the trolley to assure that it turns easily.
- Inspect the lift attachment(s). If any cracks or damage is found, have the attachment repaired or replaced.
- Inspect the springs on the safety brake to assure they are connected at both ends.
- Inspect the toe brake on the rear heels for proper operation.



### Section 5: Station Details

#### Section 5-1: Trolley Assembly



ITEM NO.	PART NUMBER	DESCRIPTION	EXPLODED/QTY.
1	1_2 PIN 5-3_8		1
2	18997	1616 BEARING 1/2" ID by 1-1/8" OD BY 3/8 WIDE	2
3	1HALF COLLAR	1/2" SET COLLAR	2
4	12157	MH400 TROLLEY BRAKE SUPPORT PIVOT PIN	1
5	12158	MH400 TROLLEY BRAKE SPRING ARM SHAFT	2
6	SLTD SPR PIN ~125_0~75		2
7	SSCR-HEX-CUP .250-20 UNC_0.5_SIMP	SOCKET SET SCREW SUP POINT 1/4-20 X 1/2"	1
8	18984	PUSHIN NYLON PIN	4
9	00208	2" O.D. x 1/2" ID PULLEY	1
10	13101	MH400 ROLLER SUPPORT SHAFT	1
11	18983	WASHER 1-1/2 OD X 1" ID X .077	12
12	18990	1641 BEARING 1" ID X 2" OD X .563 WIDE SHIELDED	4
13	1 IN SET COLLAR	1" SET COLLAR	2
14	HEX BOLT ~375-16 UNC_0~75_SIMP	HEX BOLT 3/8-16 X 3/4" GRADE -5	4
15	18976	Steel Clevis Pin 1/2" Dia, 1-1/4" Length, 1" Usable Length	1
16	18975	Zinc-Plated Steel Cotter Pin 1/8" Diameter, 1" Length	1
17	14207	MH400 ROLLER SUPPORT SHAFT REAR	2
18	12152	MH400 TROLLEY BRAKE WELDMENT	1
19	12154	MH400 TROLLEY BRAKE CAM WELDMENT	1
20	19007	EXTENSION SPRING	2



# AZTECH CONVERTING SYSTEMS

## MH-800 USER MANUAL

---

### Section 6: Replacement Parts

#### 6-1: Replacement Casters

FRONT: CAS002-781

REAR w/BRAKE: CAS022-749

#### 6-2: Replacement Lift Cables

**MH-400A** - 13910

**MH-400C** - 13911



## Section 7: Warranties and Service

### 7-1: Warranties & Provisions

#### WARRANTIES

All equipment manufactured and sold by AZTECH Converting Systems (Seller) is warranted to be free of defective materials and workmanship under normal use and service for a period of one (1) year from the date of delivery to Buyer's premises. All commercial components not manufactured by Seller carry the original manufacturer's warranty. At Seller's discretion, Seller may provide on-site warranty service for a period of ninety (90) days from the aforementioned date.

#### REMEDIES

If within the Warranty Period any such Equipment is proven to Seller's satisfaction to be defective in either material or workmanship, Seller, at its sole discretion, shall (a) repair or replace defective parts on the Equipment at Seller's cost, or (b) grant a reasonable allowance on account of such a breach. If within the Warranty Period the Seller receives notice from Buyer of defects in parts or materials. Seller will ship (ground, prepaid) replacement parts and invoice Buyer for the full cost of the replacement parts). Buyer will receive a Return Authorization (RA) from seller, and return defective parts or materials to Seller, who at its sole discretion shall deter-

*mine whether defective parts or materials are or are not subject to exclusion from this warranty as provided herein. Any defective parts or material not excluded from the Warranty Period will then be fully credited to Buyer.*

#### EXCLUSIONS

THE FOLLOWING ITEMS ARE EXCLUDED FROM THIS WARRANTY.

- Defects or damage caused by careless or improper use.
- Parts that need periodic replacement from wear during normal operation.
- Routine maintenance and adjustment.
- Failure or damage caused by improper installation or inadequate maintenance by Buyer.
- Failure or damage caused by equipment modifications by Buyer.
- Equipment damage resulting from an accident, or abnormal conditions of operation.

#### DISCLAIMER

NO OTHER WARRANTY IS EXPRESSED OR IMPLIED INCLUDING WARRANTIES OF MERCHANTABILITY AND FITNESS FOR ANY PARTICULAR PURPOSE. SELLER IS NOT LIABLE FOR INCIDENTAL OR CONSEQUENTIAL DAMAGE SUCH AS, BUT NOT LIMITED TO LOSS IN

PROFITS, LOSS OF USE OF EQUIPMENT, OR INCREASED IN OPERATING COSTS OR EXPENSES.

### 7-2: Technical Service

In the event that your MH-800 is not functioning properly or if you have any technical questions, an AzTech Technical Service representative is available to assist you. Contact information is as follows:

**Phone:** 1-800-829-8351

**Fax:** 1-480-998-5409

**E-Mail:** [techservice@aztech-converting.com](mailto:techservice@aztech-converting.com)