

User Manual

EDK 350 Developer Kit

EDK 352 Thermo Developer Kit

EPK 350 Programmer Kit



Important Notes

This information describes the type of component and shall not be considered as assured characteristics. No responsibility is assumed for possible omissions or inaccuracies. Circuitry and specifications are subject to change without notice. For the latest product specifications, refer to the EnOcean website: <http://www.enocean.com>.

As far as patents or other rights of third parties are concerned, liability is only assumed for modules, not for the described applications, processes and circuits. EnOcean does not assume responsibility for use of modules described and limits its liability to the replacement of modules determined to be defective due to workmanship. Devices or systems containing RF components must meet the essential requirements of the local legal authorities. The modules must not be used in any relation with equipment that supports, directly or indirectly, human health or life or with applications that can result in danger for people, animals or real value. Components of the modules are considered and should be disposed of as hazardous waste. Local government regulations are to be observed.

Packing: Please use the recycling operators known to you. By agreement we will take packing material back if it is sorted. You must bear the costs of transport. For packing material that is returned to us unsorted or that we are not obliged to accept, we shall have to invoice you for any costs incurred.

This development kit and its components are intended for use for evaluation, demonstration or engineering development purposes only. It is not considered to be a finished end product fit for consumer use. Persons handling this developer kit must have electronics expertise and observe good engineering practice standards. As such, the goods being provided are not intended to be complete in terms of required design, marketing, and/or manufacturing related protective considerations, including product safety and environmental measures typically found in end products that incorporate such electronic components or circuit board. EnOcean does not reliable consequences for any HW or SW changes/modifications of the developer board done by the developer.

Important notice for users in Japan: This developer kit is not certified as conforming to technical regulations of radio law of Japan. If you use this kit in Japan, you are required by Radio Law of Japan to follow the instructions below with respect to this product: Use this product in a shielded room or any other test facility as defined in the notification #173 issued by Ministry of Internal Affairs and Communications on March 28, 2006, based on sub-section 1.1 of article 6 of the "Rule for Enforcement of Radio Law of Japan". Use this kit only after you obtained the license of "Test Radio Station" as provided in Radio Law of Japan with respect to this product, or use of this product only after you obtained the technical regulations conformity certification as provided in radio law of Japan with respect to this product. Do not transfer this product, unless you give the same notice above to the transferee. Please note that if you could not follow the instructions above, you will be subject to penalties of Radio Law of Japan.



Observe precautions! Electrostatic sensitive devices!

Index

1	Introduction	4
1.1	Overview EnOcean Developer Kit - EDK 350.....	4
1.1	EnOcean Developer Kit - EDK 350.....	5
1.2	EnOcean Thermo Developer Kit - EDK 352	6
1.3	EnOcean Programmer Kit - EPK 350.....	7
2	First Steps and Demonstrations	8
2.1	Demonstration of '1-Channel Relay Switch' and 'Learn-Concept'	8
2.2	Software Installation	9
2.3	DolphinView Advanced	10
2.4	Demonstration of PTM 2xx (standard mode).....	11
2.5	Demonstration of PTM 215 security (optional)	12
3	Assembling of an Industrial Switch	13
3.1	ECO 200 & PTM 330 – Push Button Generator & Radio Module.....	14
4	Working with DolphinStudio	15
4.1	DolphinStudio Installation	15
4.2	Check Firmware Version and Update	16
4.3	Configuration of Temperature Sensor STM 33X.....	17
5	Write your own Firmware	20
6	Usage of EDK 352 Thermo Developer Kit (optional).....	21
6.1	Connect STM 312 with ECT 310 Perpetuum and Peltier element.....	22
6.2	Demonstration	22
7	References	23
8	EOP 350-2 Circuit & Layout.....	24

1 Introduction

1.1 Overview

EDK 352 Thermo Dev Kit -
extend your developer kit or
programmer kit with a
thermo harvester powered
sensor platform



EPK 350 Programmer Kit -
upgrade your starter kit to the
full-blown developer kit



ESK 300 Starter Kit -
the easy way to get started with
battery less technology



EDK 350 Developer Kit -
everything you need to start
implementing innovative, self-
powered solutions; demonstrate,
configure, hardware design and
software programming



EnOcean Developer Kit - EDK 350

EDK 350 contains everything you need to start implementing innovative solutions with EnOcean's energy harvesting and ultra-low power radio technologies. The kit will help you to demonstrate and configure EnOcean products. Additionally you can easily design new hardware and start software programming.

Content

- User Manual
- USB cable
- USB 300: USB Stick Gateway
- PTM 2xx: Push button switch incl. rocker
- STM 33x: Self-powered temp. sensor
- ECO 200: Mechanical energy harvester incl. housing example
- PTM 330: Push button radio module
- TCM 320: Transceiver module
- STM 300: Radio module on adapter
- EOP 350: Universal programmer board



Updates for this user manual are available at:
http://www.enocean.com/en/enocean_modules/edk-350/

1.2 EnOcean Thermo Developer Kit - EDK 352

EDK 352 extends the EnOcean Developer Kit EDK 350 with a thermo harvester powered radio sensor platform.

Content

- User Manual
- STM 312:
Universal radio sensor module
- ECT 310 Perpetuum:
Ultra-Low-voltage converter
- Peltier element



Updates for this user manual are available at:
http://www.enocean.com/en/enocean_modules/edk-352/

1.3 EnOcean Programmer Kit - EPK 350

The programmer kit EPK 350 is an upgrade for the starter kit ESK 300 to the feature set of the developer kit EDK 350.

Content

- User Manual
- TCM 320:
Transceiver module
- STM 300:
Radio sensor module on adapter board
- EOP 350: Universal programmer board



Updates for this user manual are available at:
http://www.enocean.com/en/enocean_modules/epk-350/

2 First Steps and Demonstrations

2.1 Demonstration of '1-Channel Relay Switch' and 'Learn-Concept'

The TCM 320 module has already several pre-implemented features for building automation. The 1-channel relay mode is used to switch on and off a module pin. If you connect a relay to this pin you can switch a line-powered device.

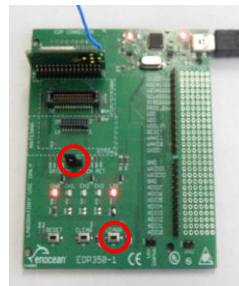
1. Plug TCM 320 into EOP 350 and set jumper to 1-CH ACT



2. Connect EOP 350 with USB power (e.g. PC)
3. Learn PTM switch ID to TCM 320:
 - Press LEARN button on EOP 350 > 0.5s
→ LMI LED will light, CH0 will flash
 - Push switch rocker one time to send learn telegram
 - Finish learn mode with LEARN button > 0.5s
4. Push PTM switch to toggle CH0 LED (relay pin)

Attention:

- Example works only with TCM 300/320 standard firmware and rocker on PTM switch.
- If you have replaced TCM firmware, load TCM 320 default firmware from website.
- Pushing the switch a second time during learn mode will delete the ID.
- Operating mode can only be changed after deleting all IDs.
- During learn mode supply voltage needs to be stable to avoid flash corruption.



2.2 Software Installation

- Please register your personal account on the EnOcean website:
<http://www.enocean.com/en/download/>

Following software components need to be downloaded and installed:

DolphinView

- Visualize properties of EnOcean radio nodes
- Receives, sends and analyses radio telegrams according to the EnOcean standard
- Get detailed information e.g. sub-telegram timing and signal strength
- Content of telegrams can be analyzed online and logged with time stamp
- Supports remote management features like ping, query and remote learn

DolphinStudio

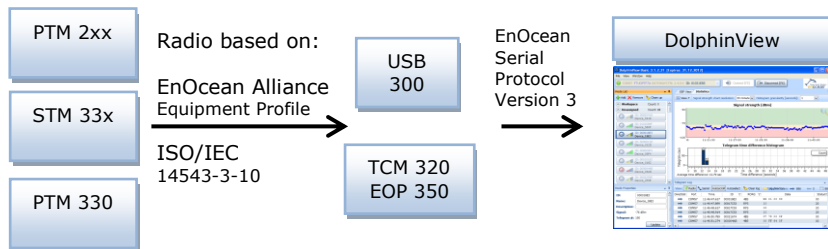
- DolphinStudio software provides a graphical user interface allowing easy configuration and programming of EnOcean modules with Dolphin chip.

DolphinAPI

- Operating system for self-powered applications
- Source code samples in C-Code for switching, dimming etc.
- Comprehensive software libraries (wireless communication, energy management, ...)

2.3 DolphinView Advanced

- EnOcean DolphinView visualizes and interprets EnOcean radio telegrams. It receives EnOcean telegrams via USB 300 or TCM 320 with DolphinSniffer Software.

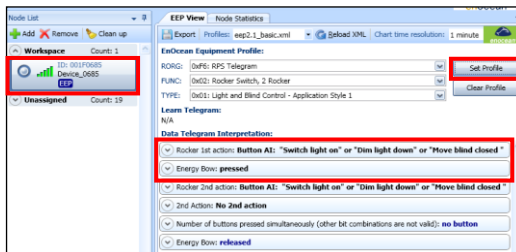


- Download DolphinView from EnOcean's Software download website
- Execute the DolphinView setup program and follow instructions
- Connect the USB 300 to your PC or notebook.
With USB 300 you will get basic information of EnOcean telegrams.
With TCM 320 and DolphinSniffer FW you will get detailed information (e.g. timing)
- Execute DolphinView and press the connect button

2.4 Demonstration of PTM 2xx (standard mode)

The push-button radio transmitter module enables the implementation of wireless remote controls without batteries. Key applications are wall-mounted flat rocker switches with 1 or 2 rockers, as well as handheld remote controls with up to 4 single push-buttons.

- Radio telegrams will be received via USB 300 and shown by DolphinView
- Press rocker to send switch telegram → PTM switch will be shown in node list
- Double click on PTM within the node list → PTM will be added to the node list
- Select node and press “Set Profile” button to interpret Equipment Profile
- Press rocker on I-side (marking on PTM switch) to send “switch on telegram”
- Press rocker on O-side (marking on PTM switch) to send “switch off telegram”

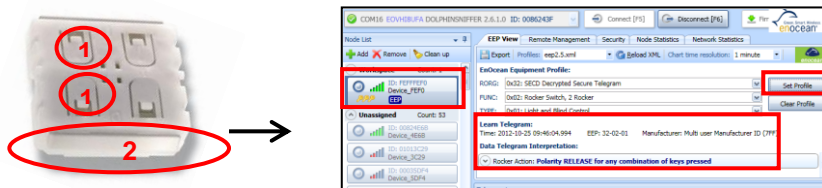


2.5 Demonstration of PTM 215 security (optional for 868 MHz)

PTM 215 has an additional secure mode with a rolling code to prevent copying. It supports normal mode and secure mode. In order to use the secure mode you need a transceiver firmware with encryption firmware or DolphinView to evaluate secure telegrams.

- Use EOP 350 with TCM 320 and DolphinSniffer firmware to receive secure telegrams
- Start DolphinView and connect TCM 320 DolphinSniffer
 - PTM 215 **DA**: Hold down two contacts (1) and press the energy bow (2) **one time**
 - PTM 215 **DB** or higher: Hold down two contacts (1) and press the energy bow **two times** (for details see PTM 215 user manual)
 - PTM will send a learn and synchronisation telegram to the receiver
- Received (telegram log) and interpreted telegram (EEP view) will be shown
- Additional documentation is available at:

www.enocean.com/en/security-specification/ and http://www.enocean.com/en/enocean_modules/ptm-215/



Remark: PTM 215 can be switched from secure mode to normal mode by simultaneously hold down four contact nipples and actuating the energy bow. Before changing the operating mode, make sure to clear the device from all learned receivers, otherwise receivers will ignore the telegrams and the application will not work.

3 Assembling of an Industrial Switch

Just combine the plastic frame switch with mechanical energy harvester ECO 200 and radio electronic board PTM 330 and you have assembled your first self-powered switch. This demonstrates how EnOcean's energy harvesting and ultra-low power radio technology can be implemented within various environments.

1. Place ECO 200 generator into plastic frame



2. Clip PTM 330 electronic board on top



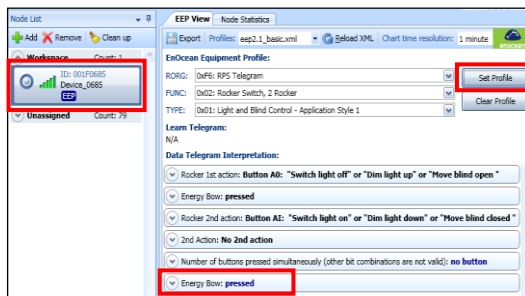
3. Press the spring on the ECO 200 and it will send multiple EnOcean telegrams



3.1 ECO 200 & PTM 330 – Push Button Generator & Radio Module

The ECO 200 is an energy converter for linear motion. It can be used to power the PTM 330 radio module. The energy output at every actuation is sufficient to transmit multiple sub-telegrams with a free field range of 300m. Possible applications are miniaturized switches and sensors in building technology and industrial automation.

- Radio telegrams will be received via USB 300 and shown by DolphinView Basic
- Press spring to send telegram → PTM 330 will be shown in the node list
- Select node and press "Set Profile" button to interpret Equipment Profile
- Press spring to send telegram "Energy Bow: pressed"
- Pull spring to send telegram "Energy Bow: release"



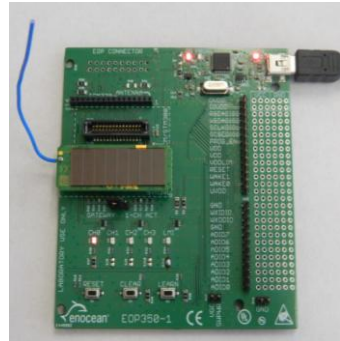
Attention:

In order to simulate a wall switch (PTM 2xx) you need to use the contact pins on top of the board. For details see PTM 330 user manual.

4 Working with DolphinStudio

4.1 DolphinStudio Installation

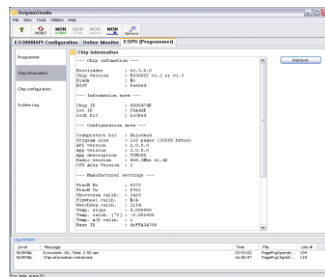
1. Download DolphinStudio from <http://www.enocean.com/en/download/>
2. Install DolphinStudio via setup program
3. Unplug jumper on STM 33x and keep it for later usage
4. Plug STM 33x temperature sensor on top of EOP 350 (antenna to the left side)
5. Connect EOP 350 via USB cable to PC
6. Start DolphinStudio and select COM port



4.2 Check Firmware Version and Update

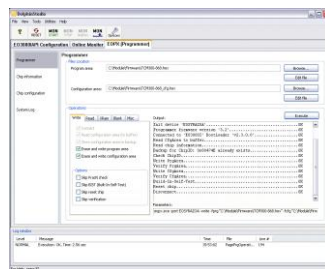
Firmware Version:

1. Start DolphinStudio and select "EOPX (Programmer)" tab
2. Select "Chip information"
3. Press "Retrieve" button
4. Current application type and version will be shown



Update Firmware:

1. Program and compile your own FW oder download update from EnOcean website e.g. <http://www.enocean.com/en/download/>
2. Start DolphinStudio and select "EOPX (Programmer)" tab
3. Select "Programmer"
4. Select FW file via "Browse..." button; chip configuration file will be automatically recognized by ending *.cfg.hex
5. Press "Execute" button to start the update process



4.3 Configuration of Temperature Sensor STM 33x

1. Select "Configuration" tab within DolphinStudio
2. Select STM 33x within configuration window
3. Click on read configuration button

E03000I API Configuration		EOPX (Programmer)	
Programmer	Modul Configuration — Configuration —		
Modul Information	<div style="border: 2px solid red; padding: 2px;">STM330</div>	<div style="border: 2px solid red; padding: 2px;">Read configuration</div>	<div style="border: 2px solid blue; padding: 2px;">Write configuration</div>
Modul Configuration	— Options — EnOcean Equipment Profile / Teach-In telegram		

4. You will get on overview of the temperature sensor pre-defined configuration

Modul Configuration	EnOcean Equipment Profile / Teach-In telegram Select EnOcean Equipment Profile (EEP). The EEP information is used in teach-in telegram. Select Manufacturer to disable teach-in telegrams. NOTE: In order to use Humidity Sensor profiles a HSM 100 module has to be plugged-in.
System Log	Profile: <div style="border: 1px solid gray; padding: 2px;">A5-02-05 Temperature, 0 °C to +40</div> Manufacturer Id: <div style="border: 1px solid gray; padding: 2px;">0x00B EnOcean GmbH</div>

5. STM 33x will only send a LEARN telegram if an “Manufacturer ID” is configured. Change “Manufacturer ID” for example to EnOcean GmbH.

Manufacturer Id:	0x00B EnOcean GmbH ▼
------------------	----------------------

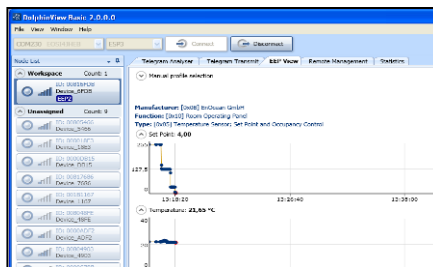
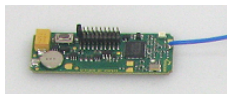
6. You can change the wake up cycle, but keep in mind, this will heavily affect the energy budget. For details see STM 31x user manual.

Cyclic wake-up	
Configure the cyclic wake-up behaviour. This configuration will overwrite the hardware settings on the CW_0, enable hardware settings select 0xFFFF (default)	
Wake-up cycle:	<input type="text" value="60"/> <div> 0: disable cyclic wake-up 1..65534: wake-up cycle time[s] 0xFFFF: use hardware settings (default) </div>

Typical values for OEM products are:

Cyclic wake-up cycle:	100s (wake up and check temperature value)
Redundant retransmission min:	7 (min send interval every 7. wake up)
Redundant retransmission mx:	14 (max send interval every 14. wake up)

7. Unplug STM 33x from EOP 350 and set jumper as before (near learn button)
8. Start DolphinView Advanced
9. Connect to USB 300 or TCM 320 with DolphinSniffer as gateway
10. Press learn button on STM 33x
→ Learn telegram will be sent, and DolphinView will automatically recognize the temperature sensor (see EEP symbole in node list)
11. Select EEP tab and wait for the first telegram send by the sensor after the retransmission interval
→ Sensor values will be automatical interpreted and plotted into a diagram

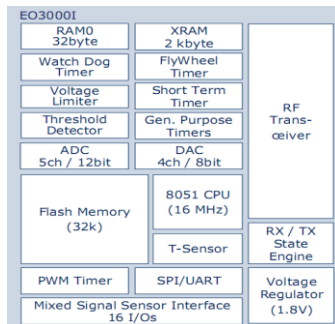
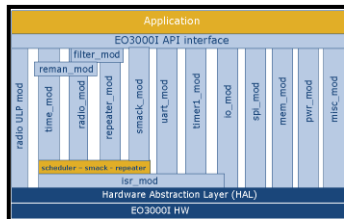


5 Write your own Firmware

1. Download DolphinAPI and install from <http://www.enocean.com/en/download/>
2. Get your IDE (Keil μ Vision) and C51 development tool (PK51) from ARM: <http://www.keil.com/c51/pk51kit.asp>
3. A description and C-cod samples of DolphinAPI can be found within the installation folder
4. Implement your application and upload the firmware via DolphinStudio

If you have any questions, please contact our application engineering:

support@enocean.com



6 Usage of EDK 352 Thermo Developer Kit (optional)

Introduction

EDK 352 extends the basic developer kit EDK 350 with a thermo-powered radio module solution. Energy is converted from the heat flux through the Peltier element. EnOcean's ultra-low voltage converter ECT 310 Perpetuum converts tiny voltage ($>20\text{mV}$) from the Peltier element to operate the STM 312 sensor module.

Content EDK 352:

- User Manual
- STM 312: generic sensor platform
- ECT 310 Perpetuum: ultra-low voltage DC/DC converter
- Peltier element



6.1 Connect STM 312 with ECT 310 Perpetuum and Peltier element

- Solder output pins of the ultra-low voltage converter ECT 310 to the power input pads on the backside of STM 312 sensor
- Peltier element to the input pins of ECT 310
- For details and pin layouts see STM 31x user manual



6.2 Demonstration

- Expose the Peltier element to a heat flux of more than 1-2 °C temperature difference between cold and hot side.
- With an ambient temperature of about 20°C it is enough to hold the finger on top of the “hot” side of the Peltier element. This causes enough energy to power STM 312 and send several telegrams.
- In order to generate a permanent heat flux we recommend to use a heat spreader on the cold side and a hot surface e.g. heating system, hot engine etc. on the hot side.
- For details of external sensor pins see STM 312 user manual.

7 References

- Data sheets and user manuals:

868 MHz: http://www.enocean.com/en/enocean_modules/

315 MHz: http://www.enocean.com/en/enocean_modules_315mhz/

902 MHz: http://www.enocean.com/en/enocean_modules_902mhz/

- Software can be found at: www.enocean.com/download
- Additional information: <http://www.enocean.com/knowledge-base/>
- Technical support: support@enocean.com
- EnOcean Equipment Profiles: <http://www.enocean-alliance.org/eep/>

For developing hardware and software with EnOcean technology we recommend using our developer kits:

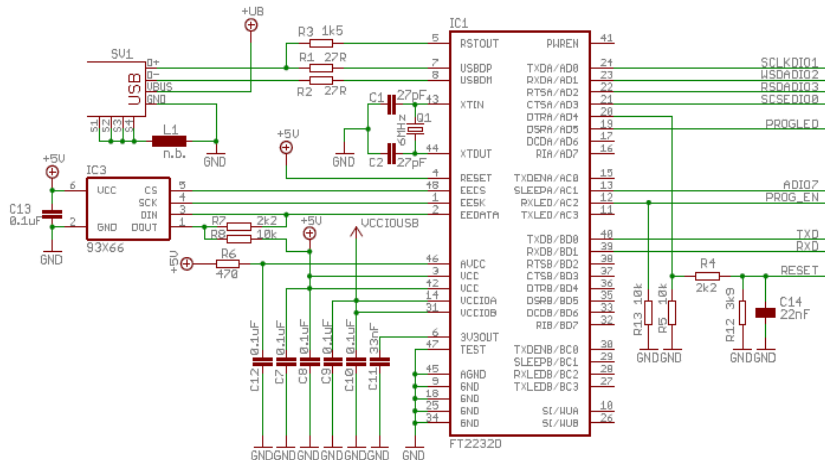
868 MHz: http://www.enocean.com/en/enocean_modules/

315 MHz: http://www.enocean.com/en/enocean_modules_315mhz/

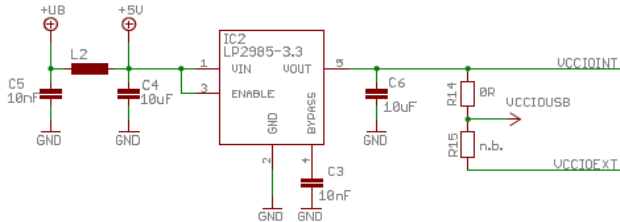
902 MHz: http://www.enocean.com/en/enocean_modules_902mhz/

8 EOP 350-2 Circuit & Layout

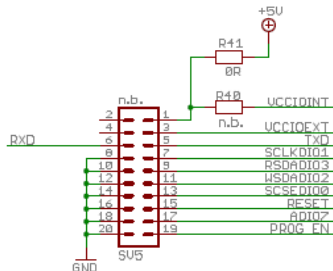
USB serial converter



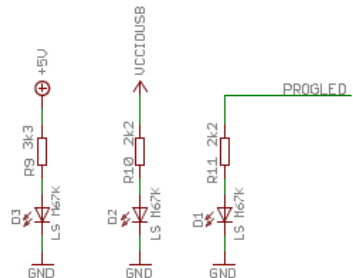
3.3V DC/DC converter



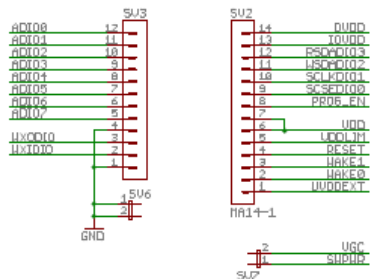
Programmer interface



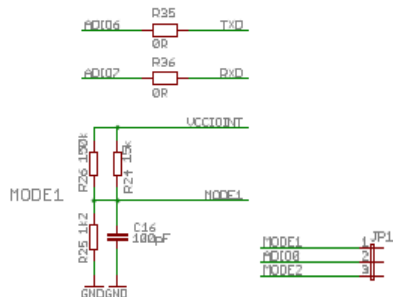
LEDS



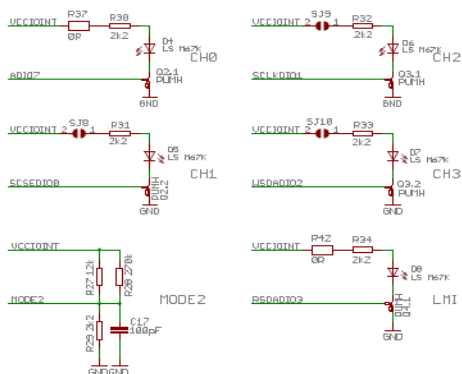
EXT PINS



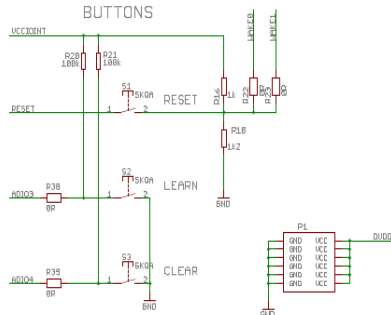
GATEWAY

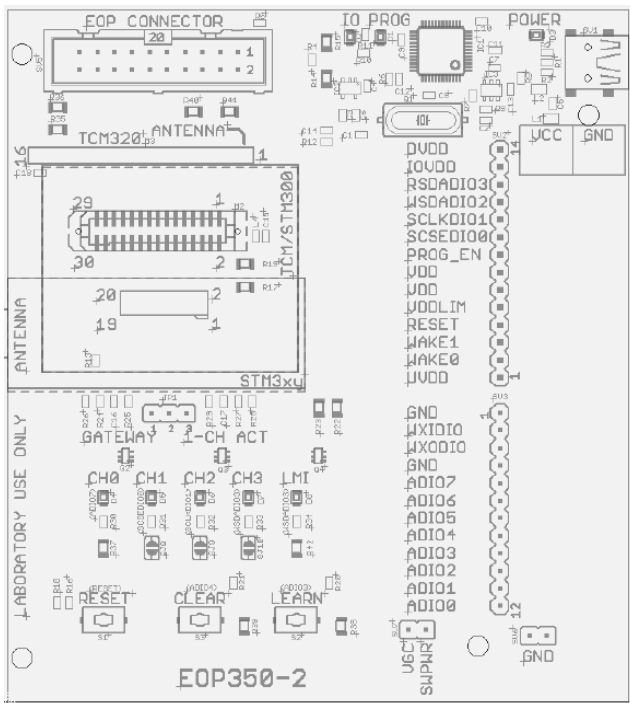


1-CH ACTUATOR



BUTTONS





ENOCEAN

EnOcean is the originator of patented energy harvesting wireless sensor technology. The company manufactures and markets maintenance-free wireless sensor solutions for use in buildings and industrial installations. EnOcean solutions are based on miniaturized energy converters, ultra-lowpower electronic circuitry and reliable wireless. Combining these elements enables EnOcean and its product partners to offer sensor systems that are fundamental for energy-efficient buildings and innovative industry.

www.enocean.com

CONTACT

Our value-added distributors provide customers with applications support and technical expertise.

www.enocean.com/distributor

SET UP ON THE ENOCEAN STANDARD FOR ENERGY
HARVESTING WIRELESS SENSOR SOLUTIONS.



www.enocean.com