

## HCGUG Pictometry SIG



Thursday January 31, 2008 1:30 - 3:00pm

## Pictometry SIG

- Introductions:
  - Hennepin County GIS
    - Jay Meehl – Hennepin County GIS
    - Warren Fong – Hennepin County GIS
  - Pictometry
    - Dean Larson – District Manager
    - Peter White – General Technical Manager (New Regional Resource)
  - Special Interest Group Members
    - Name
    - Organization – City, Agency, etc...
    - Job title, class, etc...
    - Experience with Pictometry Images and Software

## HCGUG Pictometry SIG



### Status

Pictometry has been installed in 30 cities.

## Pictometry SIG

### Agenda

- Update on Spring 2008 flight
- Preflight Requirements
  - Request for DEM data from cities.
- Update license agreement, city cost sharing, city hardware/software
  - Start list of cities interested in new 2008 Image Warehouse
- Image delivery to county approx 60 days after flight
  - Discuss possible redistribution options to cities.
- Pictometry Staff Demo
  - Change Analysis
  - Change Finder
- Discussion on Parcel Updates and Linking Image Warehouse

## Pictometry SIG

- Spring 2008 flight
  - Contract between Hennepin County and Pictometry for 2008 flight was submitted for review and approval at next Hennepin County Board Meeting.
  - Flight would be part of a coordinated Metro-wide flight in April 2008.
  - Image delivery to Hennepin County would be approx 60 days after flight.
  - Acceptance Testing by Hennepin County GIS Division.
  - Redistribution to Cities, Agencies and other Organizations will need to be prioritized.

## Pictometry SIG

- Preflight Requirements
  - Request for elevation data
  - Cities can submit DEM for use in processing the new 2008 image library.
  - What is Elevation Model?
    - DEM - Digital Elevation Model – Representation of the Earth's surface including features such as buildings, bridges, etc.
    - DTM - Digital Terrain Model – Provides a filtered version of the Earth's surface. So-called bare-earth, devoid of landscape features.
  - X,Y,Z submission due February 15, 2008

## Pictometry SIG

Pictometry \*Our system can currently directly convert the data formats listed below: they are listed in order of preference.

1. Delimited text file(s) representing the x, y and z values with each record on a separate line (comma, space or tab delimited)
2. DBF file(s) with the x, y and z values in separate columns
3. ESRI point shape file(s) with the x, y and z values as discrete items in the attribute table
4. Standard STDS formatted USGS DEM files

\* ESRI Grid files (or ASCII equivalent) are an option but are not preferred as they require several conversion steps on our end; we prefer not to have to manipulate your data outside of your control.

## Pictometry SIG

- \* Ideally we would prefer smaller manageable tiles rather than large geographic areas if possible/available.
- \* Ideally having no header or footer information or line breaks/extraneous information in text file format is helpful.
- \* We also request any metadata that you may have or at least an indication of the following elements:
  - Coordinate System
  - Projection
  - Horizontal Datum
  - Vertical Datum
  - Data Point posting interval
  - Horizontal Units
  - Vertical Units
  - Order of elements (i.e. x, y, z - or - z, x, y depending on file format)
- \* Intended use (i.e. parcel mapping, base mapping, hydrology, contour generation - please indicate interval)
- \* Use/Licensing restrictions if any, any required NDAs or data use or licensing agreements

Any interest from group? Any questions?

## Pictometry SIG

- Discuss past and future licensing issues, concerns, problems, etc...
  - Cost Sharing & Licensing
    - Cost Sharing proposed to be the same as before.
      - Waiting on Hennepin County Board and GIS Manager approval.
    - Future image distribution will require updated license agreement and payment.
      - Image warehouse(s) will not be distributed until contract is signed. Payment would be due within 30 days of delivery.

## Pictometry SIG

- Discuss past and future licensing issues, concerns, problems, etc...
  - Improvements in Process
    - Contract will be returned to only one address
    - Contract will include attached invoice
    - Contract will include a check list of required tasks and instructions

## Pictometry SIG

- Discuss past and future licensing issues, concerns, problems, etc...
  - Hardware considerations:
    - Cities will need to decide on storing one or two Image Warehouses.
    - Cities will need to find space if they choose to store two image Warehouses.
    - **Cities will need to provide external hard drive to Hennepin County to acquire new Image Warehouse.**
    - Best way to help coordinate this...

## Pictometry SIG

- Discuss past and future licensing issues, concerns, problems, etc...
  - Software considerations:
    - Hennepin County will be moving to latest 2.7 version exclusively in 2008.
    - We will be supporting the **latest version only**.
    - New software versions: EFS 2.7, EFS 2.7 Config Editor, & Change Analysis 2.7
  - Some stuff to consider:
    - Update client software, Update pwf, pcf, etc...

## Pictometry SIG

- Pictometry Staff
  - Dean Larson – District Manager
  - Peter White – General Technical Manager
- Pictometry Demo
  - Change Analysis
    - What is Change Analysis?
    - Demo
  - Change Finder
    - What is Change Finder?
    - Demo

## Pictometry SIG

- Pictometry Discussion
  - Pictometry Questionnaire
  - City Pictometry Support Staff
  - Parcel Update Procedure
  - Understanding pathing to image library

## Pictometry SIG

- Pictometry Questionnaire
- Please complete and leave here

Thanks for your help...

## Pictometry SIG

- Pictometry Discussion
  - City Pictometry Support Staff
    - Need to invest time in working with the software
    - Need to review the on-line documentation
    - Use software HELP
    - Hit the HCGUG site



## Pictometry SIG

- Pictometry Discussion
  - Parcel Update Procedure
    - Instructions on how to incorporate parcel updates
  - Reasons
    - This affects your GIS overlays
    - Is tied to the Address/PID Search
    - Affects what information is returned to the user.
    - Affects the possible labeling.

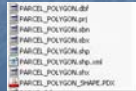
## Pictometry SIG

- Parcel Update to Pictometry
  - First you must have a license agreement with Bob Moulder (612-348-2618 or [Bob.Moulder@co.hennepin.mn.us](mailto:Bob.Moulder@co.hennepin.mn.us))
  - Once the license has been signed and returned the Survey Division will send out a parcel shapefile (this is a GIS layer of parcel boundaries). The shapefile is actually a number of files (\*.shp, \*.dbf, \*.shx)

## Pictometry SIG

- Parcel Update to Pictometry
  - You may have parcel points (center of parcel) or parcel polygon.
  - They are stored under your Pictometry directory in the Maps and GIS folder.

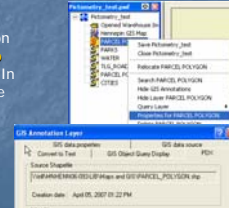
The parcel layer could actually be named after the city, could be parcel\_polygon, parcels, or you may only have parcel\_points, or parcel\_pts., depending on when you received Pictometry and if you already had parcel layers internally.



## Pictometry SIG

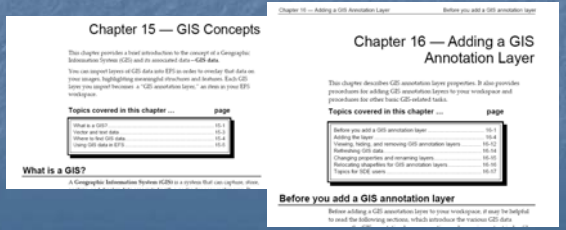
- Parcel Update to Pictometry
  - To verify what you have you can right click on the parcels in your EFS viewer and select Properties as shown below.

This will bring up the GIS Annotation Layer window. Select the **PDX** tab as shown in the illustration below. In the example below the parcels were named PARCEL\_POLYGON.



## Pictometry SIG

- Parcel Update to Pictometry
  - Chapters 15 & 16 in the 2.7 User Guide

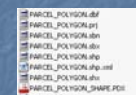


## Pictometry SIG

- Parcel Update to Pictometry
  - You currently have a workspace with parcels
  - You are just going to delete the parcel set and replace them with the new updated parcels.
  - Once you do this you need to "refresh" the software.
  - As an alternative you can always keep old and new parcels in Pictometry. Then you just need to follow the adding a GIS layer instructions and create another Address Search Profile

## Pictometry SIG

- Parcel Update to Pictometry
  - Navigate to the **Maps and GIS** directory under your main Pictometry directory (MNHENNO6-093-WHS\_City Name). Rename the parcel shapefile (a suggestion is to add an \_old (ex. Parcels\_old.shp). You are going to have to do this to all files related to the parcels. In other words in the example above, any file named PARCEL\_POLYGON.\* will be renamed (or deleted).



## Pictometry SIG

- Parcel Update to Pictometry
  - Unzip and add your new parcels to the **Maps and GIS** directory. Rename them the same name as the original parcel shapefile.
  - Once you have renamed your new parcel (shapefile) files, open up the EFS and right click on the parcel layer. Go to the PDX tab and select Create/Update button, which will update the Pictometry PDX index file.

## Pictometry SIG

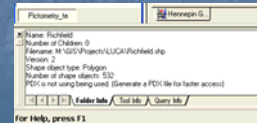
### Parcel Update to Pictometry

- Select the Create/Update button first. The application will take a few seconds to create a new index.
- Once this is complete you will see a change in the window above highlighted with the dashed line.



## Pictometry SIG

- Parcel Update to Pictometry
  - Global Refresh Feature (chapter 16)
  - May need to add the button using the customize window.
  - Update the Address Search files?



## Pictometry SIG

### Linking Image Warehouse

- For new users or re-installation on a new PC
- User finds they can not connect to the imagery.
- Must Link to your Image Warehouse

Chapter 1 in the User Manual or see handout on HCGUG site

#### Linking to your Image Warehouse

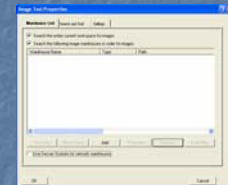
This section is for warehouse users. (You purchased a set of images—called an Image Warehouse—or you'd like to create a warehouse from individual images.) Warehouse users can skip this section. If you're not sure whether you're a warehouse or a non-warehouse user, then read "The Image Warehouse" in Chapter 2 for more information.

An Image Warehouse is a set of Pictometry images, stored in the warehouse folder of the Image Library.

## Pictometry SIG

### Linking Image Warehouse

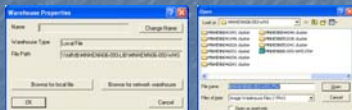
1. From the Navigation Menu select Image Tool Properties. This window will be displayed.



## Pictometry SIG

### Linking Image Warehouse

- Click the Add button, then Browse for local file. This will bring up a window for loading the Image Warehouse file (\*.PIW).

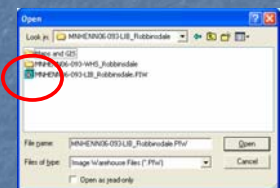


- Navigate to the location of the city's warehouse file. It will either be within the MNHENN06-093-LIB\_<CITYNAME> directory or one below it in the MNHENN06-093-WHS\_<CITYNAME> sub directory.

## Pictometry SIG

### Linking Image Warehouse

- Look for PIW icon, which is a blue box with red cross-hairs.
- This is the master imagery library warehouse file, which acts as the master image index.



## Pictometry SIG

- Open discussion
  - User experiences?
  - Questions?
  - Suggested topics for next meeting?
  - List of cities interested in 2008 image warehouse

## Pictometry SIG

- Proposed quarterly meetings in 2008.
  - March – City Mailing of Contracts
  - April flight
  - May/June – Quarterly Meeting
  - September – Quarterly Meeting
  - December – Quarterly Meeting