

ControlLogix Time Synchronization Module - Series B

Catalog Number 1756HP-TIME



Important User Information

Read this document and the documents listed in the additional resources section about installation, configuration, and operation of this equipment before you install, configure, operate, or maintain this product. Users are required to familiarize themselves with installation and wiring instructions in addition to requirements of all applicable codes, laws, and standards.

Activities including installation, adjustments, putting into service, use, assembly, disassembly, and maintenance are required to be carried out by suitably trained personnel in accordance with applicable code of practice.

If this equipment is used in a manner not specified by the manufacturer, the protection provided by the equipment may be impaired.

In no event will Rockwell Automation, Inc. be responsible or liable for indirect or consequential damages resulting from the use or application of this equipment.

The examples and diagrams in this manual are included solely for illustrative purposes. Because of the many variables and requirements associated with any particular installation, Rockwell Automation, Inc. cannot assume responsibility or liability for actual use based on the examples and diagrams.

No patent liability is assumed by Rockwell Automation, Inc. with respect to use of information, circuits, equipment, or software described in this manual.

Reproduction of the contents of this manual, in whole or in part, without written permission of Rockwell Automation, Inc., is prohibited.

Throughout this manual, when necessary, we use notes to make you aware of safety considerations.



WARNING: Identifies information about practices or circumstances that can cause an explosion in a hazardous environment, which may lead to personal injury or death, property damage, or economic loss.



ATTENTION: Identifies information about practices or circumstances that can lead to personal injury or death, property damage, or economic loss. Attentions help you identify a hazard, avoid a hazard, and recognize the consequence.

IMPORTANT

Identifies information that is critical for successful application and understanding of the product.

Labels may also be on or inside the equipment to provide specific precautions.



SHOCK HAZARD: Labels may be on or inside the equipment, for example, a drive or motor, to alert people that dangerous voltage may be present.



BURN HAZARD: Labels may be on or inside the equipment, for example, a drive or motor, to alert people that surfaces may reach dangerous temperatures.



ARC FLASH HAZARD: Labels may be on or inside the equipment, for example, a motor control center, to alert people to potential Arc Flash. Arc Flash will cause severe injury or death. Wear proper Personal Protective Equipment (PPE). Follow ALL Regulatory requirements for safe work practices and for Personal Protective Equipment (PPE).

Preface	Studio 5000 Environment	5
	1756HP-TIME Module Overview	5
	Additional Resources.....	6
	Chapter 1	
Installation	Hardware	7
	GPS Antenna.....	8
	Software.....	8
	Chapter 2	
Setup	BOOTP.....	9
	Factory Defaults	9
	ControlFLASH Software.....	10
	The Logix Designer Application Configuration.....	10
	View the Satellite Status in the Logix Designer Application.....	12
	Satellite Signal	12
	Satellite Position	13
	1756HP-TIME Module AOP Configuration Parameters.....	13
	Chapter 3	
Operation	Logix5000 Controller Input Image	17
	Logix5000 Controller Output Image	20
	Web Interface	21
	Chapter 4	
Time Synchronization	1588 Precision Time Protocol (CIP Sync).....	23
	1756HP-TIME Module as a PTP Master.....	23
	Configure the Ethernet Module/Controller PTP/CIP Sync Settings.....	24
	PTP as a Time Source.....	26
	Network Time Protocol (NTP).....	26
	1756HP-TIME Module as an NTP Server.....	26
	1756HP-TIME Module as an NTP Client	28
	IRIG-B.....	29
	1756HP-TIME Module as an IRIG-B Master	29
	1756HP-TIME Module as an IRIG-B Slave	30
	CST and UTC Time Conversion	30
	Appendix A	
Specifications	Technical Specifications	31
	Cable Specifications	31
	GPS Antenna Specifications	32
	Dimensions.....	33

1756HP-TIME Module Status	Appendix B	
	Status Indicators	35
	Status Messages	36
CST/UTC Conversion Message Blocks	Appendix C	
	CST to UTC and Gregorian Time Conversion	37
	UTC to Gregorian Time Conversion	37
	Satellite Information.....	38
Operating Modes	Appendix D	
	GPS Source	39
	IRIG-B Source	40
	PTP Source	40
	NTP Source	41
GPS Antenna Cable Extensions	Appendix E	
	Cable Extensions	43
	Determine the Length of the Cable.....	43
	Determine the Attenuation Rate of the Cable.....	43
	Example – Determining Cable Requirements	44
	Cable Extension Kits.....	44
	Lightning Protection Devices.....	45
Glossary	47
Index	49

Topic	Page
Studio 5000 Environment	5
1756HP-TIME Module Overview	5
Additional Resources	6

Studio 5000 Environment

The Studio 5000 Automation Engineering & Design Environment™ combines engineering and design elements into a common environment. The first element is the Studio 5000 Logix Designer™ application. The Logix Designer application is the rebranding of RSLogix™ 5000 software and will continue to be the product to program Logix5000™ controllers for discrete, process, batch, motion, safety, and drive-based solutions.



The Studio 5000® environment is the foundation for the future of Rockwell Automation® engineering design tools and capabilities. The Studio 5000 environment is the one place for design engineers to develop all of the elements of their control system.

1756HP-TIME Module Overview

This user manual describes the functionality, installation, configuration, and operation of the 1756HP-TIME module, series B, firmware revision 3.001.

The 1756HP-TIME module provides accurate time synchronization on different interfaces by using Global Positioning System (GPS) technology. The 1756HP-TIME module can obtain time from various sources, and provide time synchronization on other devices by acting as a gateway between different time synchronization methods and standards.

Time synchronization is accomplished by using these methods, standards, and protocols:

- The ControlLogix® backplane for Coordinated System Time (CST) and Coordinated Universal Time (UTC) conversion.
- Inter-range Instrumentation Group, code B (IRIG-B) standards.
- Precision Time Protocol (PTP) on Ethernet and the ControlLogix backplane.
- Network Time Protocol (NTP) on Ethernet.

The 1756HP-TIME module provides GPS position in the form of latitude, longitude, and altitude (LLA).

The 1756HP-TIME module provides course and route information in the form of ground speed (knots) with heading in the form of degrees from true north.

Additional Resources

These documents contain additional information concerning related products from Rockwell Automation.

Resource	Description
Integrated Architecture and CIP Sync Configuration Application Technique, publication IA-AT003	This document explains CIP sync technology and how you can synchronize clocks within the Rockwell Automation Integrated Architecture.
ControlLogix System User Manual, publication 1756-UM001	Describes the necessary tasks to install, configure, program, and operate a ControlLogix system.
EtherNet/IP Network Configuration User Manual, publication ENET-UM001	Provides Bootstrap Protocol/ Dynamic Host Configuration Protocol (BOOTP/DHCP) information for setting the IP address of the module.
ControlFLASH® Firmware Upgrade Software User Manual, publication 1756-UM105	Describes the necessary tasks to install, and use the ControlFLASH software to update the module firmware.
Industrial Automation Wiring and Grounding Guidelines, publication 1770-4.1	Provides general guidelines for installing a Rockwell Automation industrial system.
Product Certifications website, http://www.ab.com	Provides declarations of conformity, certificates, and other certification details.

You can view or download publications at <http://www.rockwellautomation.com/literature/>. To order paper copies of technical documentation, contact your local Allen-Bradley distributor or Rockwell Automation sales representative.

Installation

Topic	Page
Hardware	7
GPS Antenna	8
Software	8

Hardware

The 1756HP-TIME module operates within the ControlLogix platform. All power required for the operation of the module is supplied by the ControlLogix backplane.

Figure 1 - 1756HP-TIME Module, Front View

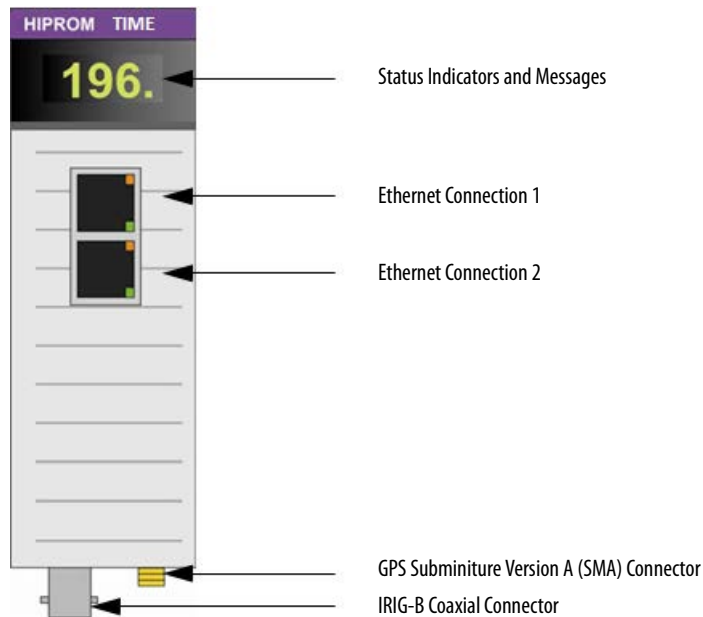


Table 1 - 1756HP-TIME Module Hardware Descriptions

Hardware	Description
Status indicators and messages	Provides status and operational information for the 1756HP-TIME module. See 1756HP-TIME Module Status on page 35 .
Ethernet connector 1 and Ethernet connector 2 (uses Rockwell Automation® dual-port switch technology)	PTP and NTP time synchronization uses the Ethernet connections. Note: This connection is not a bridge to the backplane and cannot be used to view modules on the backplane.
GPS SMA connector	Connect the GPS bullet antenna to this connector. See GPS Antenna on page 8 .
IRIG-B coaxial connector	Connect the IRIG-B network cable to this connector. The 1756HP-TIME module can be configured as a master clock or a slave clock on the IRIG-B network.

GPS Antenna

Install the GPS antenna with a clear view of the sky (do not install the antenna where objects can obstruct the view of the antenna to the sky). If an antenna is installed with a limited view of the sky, the GPS receiver can have a low satellite lock count, or be unable to obtain a lock. A limited view of the sky can cause inaccurate time synchronization.

Figure 2 - GPS Antenna Installation with Clear View of the Sky

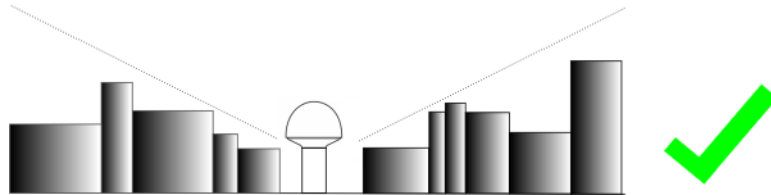
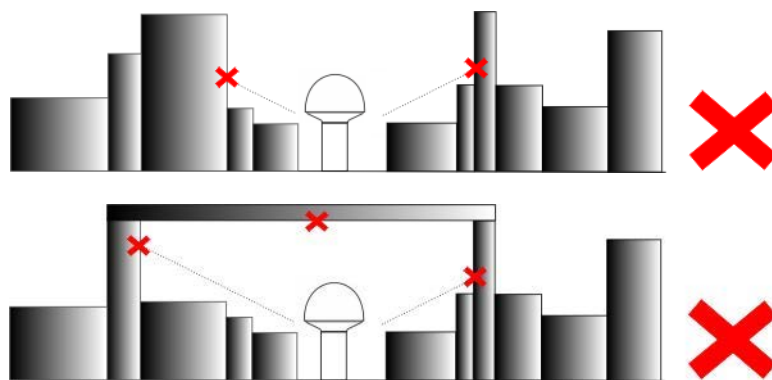


Figure 3 - GPS Antenna Installation with Obstructed View of the Sky



Software

Use this software to configure and operate the 1756HP-TIME module:

- The Studio 5000 Logix Designer application
- The Add-on Profile (AOP) for the 1756HP-TIME module, available for download at this link:

http://www.hiprom.com/Pages/Products/1756_CLX/1756HP-TIME/web/1756HP-TIME.htm

Setup

Topic	Page
BOOTP	9
Factory Defaults	9
ControlFLASH Software	10
The Logix Designer Application Configuration	10
View the Satellite Status in the Logix Designer Application	12
1756HP-TIME Module AOP Configuration Parameters	13

BOOTP

Use BOOTP to set the initial IP address for the 1756HP-TIME module. The module comes from the factory with BOOTP enabled.

The BOOTP/DHCP server is a standalone server that you can use to set an IP address.

Access the BOOTP/DHCP server from one of these locations:

- Programs > Rockwell Software > BOOTP-DHCP Server
- Tools directory on the Studio 5000 environment installation CD

If you have not installed the BOOTP/DHCP server, you can download and install it from <http://www.ab.com/linked/networks/ethernet/bootp.html>.

To set the IP address of the module with a BOOTP/DHCP server, follow the steps found in EtherNet/IP Network Configuration User Manual, publication [ENET-UM001](#).

Factory Defaults

If the module fails or becomes inoperable, the module reboots with factory-loaded boot software. The display informs you of the error and suggests a method to fix the error. If there is a firmware error, use the ControlFLASH software to restore the module to a working condition.

ControlFLASH Software

Use the ControlFLASH software to upgrade the software to a newer version.

For more information on the ControlFLASH software and how to use it, see ControlFLASH Firmware Upgrade Software User Manual, publication [1756-UM105](#).

The latest firmware can be found at this link: http://www.hiprom.com/Pages/Products/1756_CLX/1756HP-TIME/web/1756HP-TIME.htm.

The Logix Designer Application Configuration

Before you can program the 1756HP-TIME module, the AOP for the module must be installed. You also need admin rights for the module to view and configure the AOP.

The installer for the AOP can be found at this link:

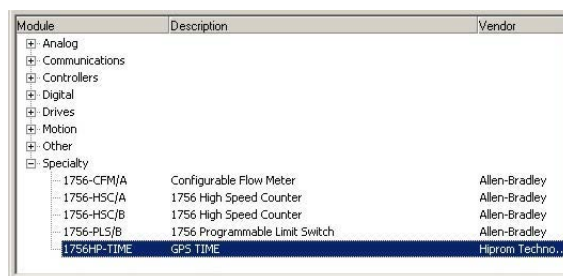
http://www.hiprom.com/Pages/Products/1756_CLX/1756HP-TIME/web/1756HP-TIME.htm.

IMPORTANT Each 1756HP-TIME module is programmed to work with a single Logix5000 controller.

IMPORTANT There is no direct communication between the 1756HP-TIME module Ethernet ports and a Logix5000 controller. If the 1756HP-TIME module resides in a remote Logix rack, it needs to communicate through an EN2T(R) module in the same rack.

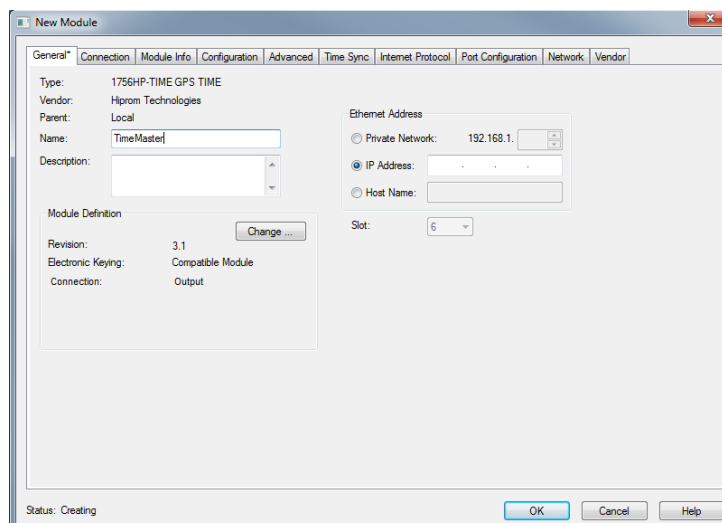
Follow these steps to configure the 1756HP-TIME module in the Logix Designer application.

1. Double-click the 1756HP-TIME module in the I/O tree in the Logix Designer application.

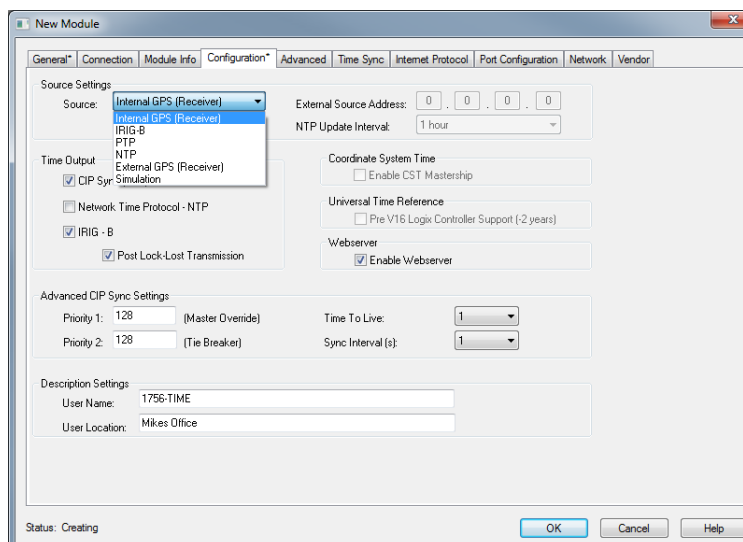


The New Module dialog box appears.

2. Enter a name for the module.
3. Enter a brief description for the module.
4. Enter the IP address for the module.



5. Click the Configuration tab.
6. From the Source Settings pull-down menu, choose the time source that you want to use.
See [Chapter 4](#) for more information on the source types.
7. Select the Time Output format.
8. Enter the Advanced CIP Sync Settings.
9. Enter the Description Settings.
10. Click OK.

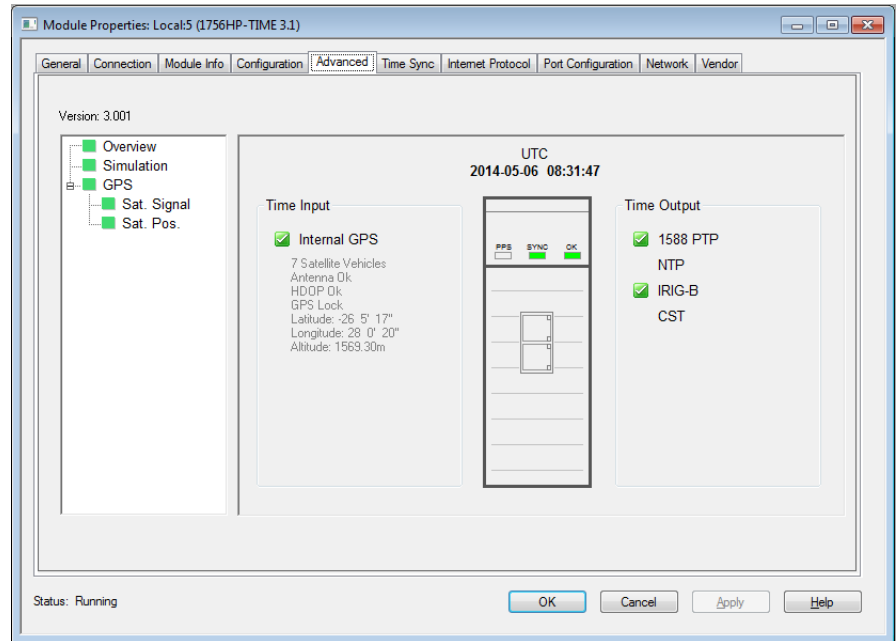


The time properties of the 1756HP-TIME module are now configured.

View the Satellite Status in the Logix Designer Application

Click the Advanced tab to view the source of the time (Time Input), and see if the time source is valid and available (green) or invalid (red). You can also view the output type (Time Output), the UTC time of the 1756HP-TIME module, and the GPS coordinates of the satellite (when a connection is locked).

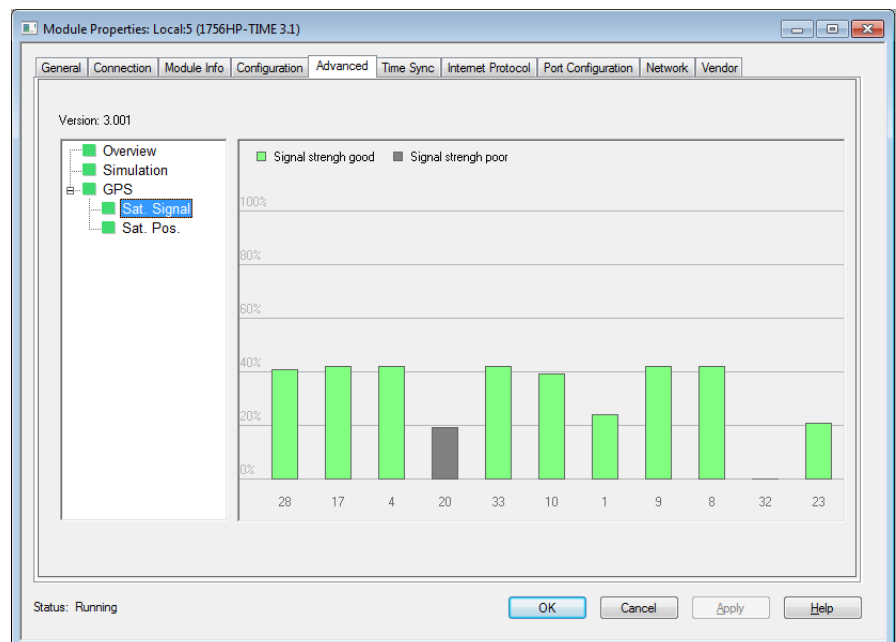
Figure 4 - 1756HP-TIME Module Properties Dialogue Box, Advanced Tab



Satellite Signal

Click Sat. Signal to view the signal strength of the satellites.

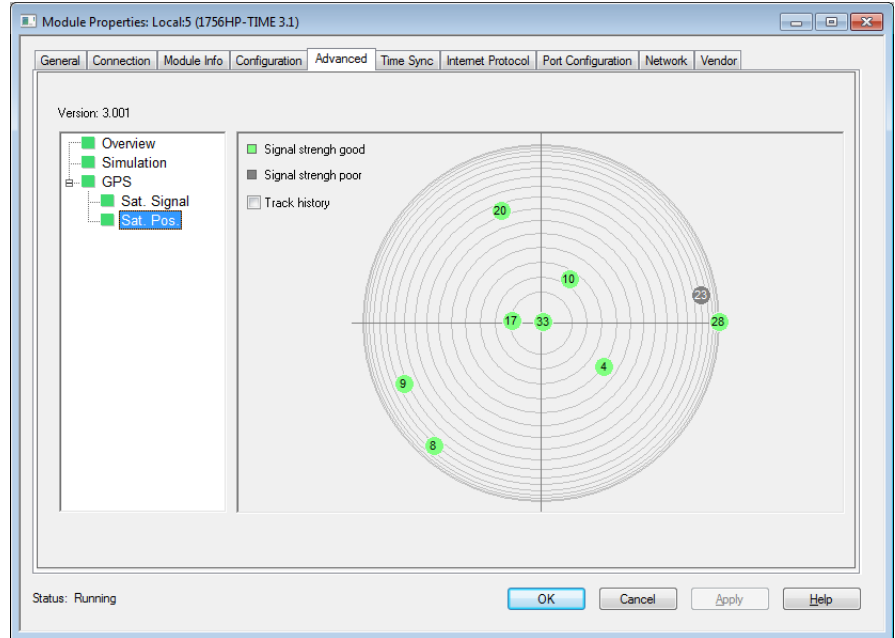
Figure 5 - 1756HP-TIME Module Properties Dialogue Box, Sat. Signal Node



Satellite Position

Click Sat. Pos. to view the position of the satellites in the sky.

Figure 6 - 1756HP-TIME Module Properties Dialogue Box, Sat. Pos. Node



1756HP-TIME Module AOP Configuration Parameters

This section describes the AOP configuration parameters for the 1756HP-TIME module. This section is for information purposes. The AOP is used to configure all the relevant module parameters.

Name	Value	Force Mask	Style	Data Type
Local:5:C	{...}	{...}		HT:1756HP_TIME_rev3:C:0
Local:5:C.Source	1		Decimal	INT
Local:5:C.Control	2#0000_000...		Binary	INT
Local:5:C.CIPSyncOutputEnable	1		Decimal	BOOL
Local:5:C.NTPOutputEnable	0		Decimal	BOOL
Local:5:C.IRIGOutputEnable	1		Decimal	BOOL
Local:5:C.IRIGLockLostTx	1		Decimal	BOOL
Local:5:C.PreV16Support	0		Decimal	BOOL
Local:5:C.CSTMastershipEnable	0		Decimal	BOOL
Local:5:C.WebsvrEnable	0		Decimal	BOOL
Local:5:C.NTPUpdateInterval	3600		Decimal	DINT
Local:5:C.ExternalSourceAddress1	0		Decimal	INT
Local:5:C.ExternalSourceAddress2	0		Decimal	INT
Local:5:C.ExternalSourceAddress3	0		Decimal	INT
Local:5:C.ExternalSourceAddress4	0		Decimal	INT
Local:5:C.Priority1	128		Decimal	INT
Local:5:C.Priority2	128		Decimal	INT
Local:5:C.CIPSyncTimeToLive	1		Decimal	INT
Local:5:C.CIPSyncInterval	0		Decimal	SINT
Local:5:C.AdvancedConfig	0		Decimal	DINT
Local:5:C.SimulationYear	2014		Decimal	INT
Local:5:C.SimulationMonth	5		Decimal	SINT
Local:5:C.SimulationDay	5		Decimal	SINT
Local:5:C.SimulationHour	13		Decimal	SINT
Local:5:C.SimulationMinute	28		Decimal	SINT
Local:5:C.SimulationSecond	0		Decimal	SINT
Local:5:C.UserName	{...}	{...}	ASCII	SINT[64]
Local:5:C.UserLocation	{...}	{...}	ASCII	SINT[64]

Table 2 - AOP Configuration Parameters

Parameter	Description	Value
Source	Indicates the time source that is used for the module.	1 = GPS 2 = IRIG-B 3 = PTP 4 = NTP 5 = External GPS (future) 6 = Simulation
CIPSyncOutputEnable	When this bit is set, the module enables 1588 PTP (CIP sync) output.	0 = 1588 PTP (CIP sync) output is disabled 1 = 1588 PTP (CIP sync) output is enabled
NTPOutputEnable	When this bit is set, the module enables NTP on Ethernet.	0 = NTP v3 RF(1305) output is disabled 1 = NTP v3 RF(1305) output is enabled
IRIGBOutputEnable	When this bit is set, the module enables IRIG-B on the coaxial interface.	0 = IRIG-B-122 output is disabled 1 = IRIG-B-122 output is enabled
IRIGBLockLostTX	When this bit is set, the module keeps sending an IRIG-B signal after it has lost lock to the time source. If this bit is clear, the module stops sending a valid IRIG-B signal when it has lost lock with the time source, as long as it has had lock at least once previously.	0 = Module stops sending IRIG-B when lock is lost 1 = Module continues sending IRIG-B, even when a lock is lost
PreV16Support	If you are using RSLogix 5000 software, version 16.00.00 and later, or the Studio 5000 environment, version 21.00.00 and later, the UTC time base is different than earlier versions of RSLogix 5000 software. The setting syncs the time between Logix5000 controllers that use any version of RSLogix 5000 software or the Studio 5000 environment.	0 = For all versions of RSLogix 5000 software or the Studio 5000 environment 1 = For RSLogix 5000 software, version 16.00.00 and earlier.
CSTMastershipEnable	Indicates if the module is the CST master clock on the local rack (if no other CST master clocks are currently active).	0 = Module does not attempt to be the CST master clock 1 = Module does attempt to be the CST master clock
WebserverEnable	Allows you to access the web server from a web browser pointed to the IP address of the module.	0 = Module does not allow access to the web server 1 = Module allows access to the web server
NTPUpdateInterval	The time (in seconds) when the module requests an update of the time from the NTP server.	Example: 5 = 5 seconds 30 = 30 seconds 300 = 5 minutes 3600 = 1 hour 86400 = 1 day 604800 = 1 week
ExternalSourceAddress	The external source address is used for one of two sources depending on how the configuration is set: <ul style="list-style-type: none"> If the time source is set to NTP, this is the IP address of the source that is used. If the source is set to External GPS, this is the IP address of the GPS receiver. 	In this example, the module uses external IP address: 192.168.1.100 Byte 0 = 192 Byte 1 = 168 Byte 2 = 1 Byte 3 = 100
Priority1	This is the override for the Best Master Clock Algorithm (BMCA).	The default is 128. Values lower than 128 indicate preference on the network.
Priority2	This is used to break a tie between two modules with the same priority 1 value.	The default is 128. Values lower than 128 indicate preference on the network.
CIPSyncTimeToLive	Limits the lifespan of data in a network. It prevents the IP packet from circulating indefinitely.	Example: 1 = the packet circulates once
CIPSyncInterval	The time interval when the module sends out a PTP sync packet.	Allowed values: 1/2 = 500 ms 1 = 1 second 2 = 2 seconds
AdvancedConfig	These are various bits used to set certain options in the module.	Bit: 0 = Simulation Mode 1...31 = Reserved

Table 2 - AOP Configuration Parameters (Continued)

Parameter	Description	Value
SimulationYear	When the module is in simulation mode, use this to set the initial year to be used by the module.	Example: 29 April 2014 Year = 2014
SimulationMonth	When the module is in simulation mode, use this to set the initial month to be used by the module.	Example: 29 April 2014 Month = 4
SimulationDay	When the module is in simulation mode, use this to set the initial day to be used by the module.	Example: 29 April 2014 Day = 29
SimulationHour	When the module is in simulation mode, use this to set the initial hour to be used by the module.	Example: 11:14:23 AM Hour =11
SimulationMinute	When the module is in simulation mode, use this to set the initial minute to be used by the module.	Example: 11:14:23 AM Minute =14
SimulationSecond	When the module is in simulation mode, use this to set the initial second to be used by the module.	Example: 11:14:23 AM Second =23
UserName	Use this parameter to identify the time module, visible in CIP sync synchronization.	Example: 1756HP-TIME
UserLocation	Use this parameter to provide extra information to identify the location of the module.	Example: Basement

Notes:

Operation

Topic	Page
Logix5000 Controller Input Image	17
Logix5000 Controller Output Image	20
Web Interface	21

Logix5000 Controller Input Image

Each 1756HP-TIME module consumes one connection from the Logix5000 controller. This section provides descriptions for the Logix5000 controller input image parameters.

Name	Value	Force Mask	Style	Data Type
Local:5:1	{...}	{...}		HT:1756HP_TIME_rev3:1:0
Local:5:1.CommStatus	0		Decimal	DINT
Local:5:1.Source	1		Decimal	DINT
Local:5:1.ModuleStatus	0		Decimal	DINT
Local:5:1.WebsvrEnabled	0		Decimal	BOOL
Local:5:1.Time	{...}	{...}		HT:1756HP_CLOCK_rev3:1:0
Local:5:1.Time.Status	2#0000_000...		Binary	DINT
Local:5:1.Time.Valid	1		Decimal	BOOL
Local:5:1.Time.CIPSyncOutputEnabled	1		Decimal	BOOL
Local:5:1.Time.NTPOutputEnabled	0		Decimal	BOOL
Local:5:1.Time.IRIGBOutputEnabled	1		Decimal	BOOL
Local:5:1.Time.CSTMasteEnabled	0		Decimal	BOOL
Local:5:1.Time.CSTMasteShip	0		Decimal	BOOL
Local:5:1.Time.CSTDuplicateDetect	0		Decimal	BOOL
Local:5:1.Time.SimulationModeActive	0		Decimal	BOOL
Local:5:1.Time.Year	2014		Decimal	DINT
Local:5:1.Time.Month	5		Decimal	DINT
Local:5:1.Time.Day	6		Decimal	DINT
Local:5:1.Time.Hour	8		Decimal	DINT
Local:5:1.Time.Minute	41		Decimal	DINT
Local:5:1.Time.Second	10		Decimal	DINT
Local:5:1.Time.MicroSecond	778800		Decimal	DINT
Local:5:1.UTC	{...}	{...}	Decimal	DINT[2]
Local:5:1.CST	{...}	{...}	Decimal	DINT[2]
Local:5:1.CSTOffset	{...}	{...}	Decimal	DINT[2]
Local:5:1.GPS	{...}	{...}		HT:1756HP_GPS_rev3:1:0
Local:5:1.GPS.GPSStatus	2#0000_000...		Binary	INT
Local:5:1.GPS.GPSLock	1		Decimal	BOOL
Local:5:1.GPS.AntennaOK	1		Decimal	BOOL
Local:5:1.GPS.HDOPOk	1		Decimal	BOOL
Local:5:1.GPS.PPS	0		Decimal	BOOL
Local:5:1.GPS.FaultCode	0		Decimal	INT
Local:5:1.GPS.Mode	0		Decimal	INT
Local:5:1.GPS.SVCCount	8		Decimal	INT
Local:5:1.GPS.Latitude	-26.088095		Float	REAL
Local:5:1.GPS.Longitude	28.005533		Float	REAL
Local:5:1.GPS.Altitude	1569.2		Float	REAL
Local:5:1.GPS.GroundSpeed	0.0		Float	REAL
Local:5:1.GPS.DegreeFromTrueNorth	0.0		Float	REAL
Local:5:1.GPS.MagneticVariationFromTrueNorth	0.0		Float	REAL
Local:5:1.GPS.RelativePositionX	0.0		Float	REAL
Local:5:1.GPS.RelativePositionY	0.0		Float	REAL
Local:5:1.GPS.RelativePositionZ	0.0		Float	REAL

Table 3 - Logix5000 Controller Input Image Parameters

Parameter	Description	Value
CommStatus	Reserved.	–
Source	Indicates the current time source.	1 = GPS 2 = IRIG-B 3 = PTP 4 = NTP 5 = External GPS (future) 6 = Simulation
ModuleStatus	Reserved.	–
WebserverEnable	Allows you to access the web server from a web browser pointed to the IP address of the module.	0 = Module does not allow access to the web server 1 = Module allows access to the web server
Time.TimeValid	Indicates if a valid time is being received from the time source.	0 = Time being received from source is invalid 1 = Time being received from source is valid
Time.CIPSyncOutputEnable	Indicates if the 1588 Output PTP is enabled in the configuration.	0 = 1588 PTP (CIP Sync) output is disabled 1 = 1588 PTP (CIP Sync) output is enabled
Time.NTPOutputEnable	Indicates if the NTP Output is enabled in the configuration.	0 = NTP v3 RF(1305) output is disabled 1 = NTP v3 RF(1305) output is enabled
Time.IRIGBOutputEnable	Indicates if the IRIG-B Output is enabled in the configuration.	0 = IRIG-B-122 output is disabled 1 = IRIG-B-122 output is enabled
Time.CSTMasterEnabled	Indicates if the module is enabled to be the CST master clock.	0 = Module does not attempt to be the CST master clock 1 = Module does attempt to be the CST master clock
Time.CSTMastership	Indicates if the module is the CST master clock on the local rack.	0 = Module is not the CST master clock 1 = Module is the CST master clock
Time.CSTDuplicateDetect	Indicates if the module is attempting to be the CST master clock. If there is another CST master clock on the local rack, the module sets this bit and stops attempting to be the CST master clock.	0 = There is no other CST master clock on the local rack 1 = There is another CST master clock on the local rack
Time.SimulationModeActive	Indicates if the module is operating in simulation mode.	0 = Simulation mode is inactive 1 = Simulation mode is active
Time.Year	Displays the current year received from the time source.	Example: 27/04/2010 13:45:22 - 234567 μ s Year = 2010
Time.Month	Displays the current month received from the time source.	Example: 27/04/2010 13:45:22 - 234567 μ s Month = 4
Time.Day	Displays the current day received from the time source.	Example: 27/04/2010 13:45:22 - 234567 μ s Day = 27
Time.Hour	Displays the current hour received from the time source.	Example: 27/04/2010 13:45:22 - 234567 μ s Hour = 13
Time.Minute	Displays the current minute received from the time source.	Example: 27/04/2010 13:45:22 - 234567 μ s Minute = 45

Table 3 - Logix5000 Controller Input Image Parameters (continued)

Parameter	Description	Value
Time.Second	Displays the current second received from the time source.	Example: 27/04/2010 13:45:22 - 234567 μ s Second = 22
Time.Microsecond	Displays the current microsecond received from the time source.	Example: 27/04/2010 13:45:22 - 234567 μ s Microsecond = 234567
Time.UTC	This is the current UTC in microseconds since the time base. The time origin is based on all versions of RSLogix 5000 software or the Studio 5000 environment. See the example code for how this is used to time stamp events in sequence-of-events (SOE) modules in RSLogix 5000 software versions earlier than 18.00.00.	Example: 02 April 2014 14:12:41 UTC = 87277992127872
Time.CST	Displays the current CST of the local rack (depending on the CST master clock) in microseconds.	Example: CST master clock running for 1 hour CST = 3600000000
Time.CSTOffset	Displays the difference between the UTC and CST in microseconds. Use this to set the wall clock in the Logix5000 controller in RSLogix 5000 software versions earlier than 18.00.00. Click this link to see example code: http://www.hiprom.com/Pages/Products/1756_CLX/1756HP-TIME/web/1756HP-TIME.htm .	Example: CSTOffset = UTC - CST UTC = 87277992127872 CST = 3600000000 CSTOffset = 87274392127872
GPS.GPSLock	Indicates if the GPS receiver has lock (if GPS is the time source).	0 = GPS receiver does not have lock 1 = GPS receiver has locked onto sufficient satellites
GPS.AntennaOK	Indicates if the GPS antenna is connected and is operational (if GPS is the time source).	0 = The antenna is either not present or is faulty 1 = The antenna is connected correctly and is operational
GPS.HDOPok	Horizontal Dilution of Precision (HDOP) occurs when there are sufficient satellites in lock, but two or more satellites occupy similar positions in the sky (therefore decreasing the number of effective satellites).	0 = HDOP is currently active 1 = HDOP is not active
GPS.PPS	The pulse per second toggles at the exact moment the second changes and the microseconds are zero. Note: because the actual RPI is 50 ms, the accuracy is lost in the input image.	0 = It has been more than 100 ms since the rollover pulse of the last second 1 = It has been less than 100 ms since the rollover pulse of the last second
GPS.FaultCode	Reserved.	–
GPS.Mode	Reserved.	–
GPS.SVCount	Indicates the number of satellites that the GPS receiver is locked on.	This is a number between 0 . . . 12
GPS.Latitude	Displays the current position latitude in degrees.	Example: S26°05'17.0" E28°00'21.3" Elev: 1577m Latitude = -26.088087
GPS.Longitude	Displays the current position longitude in degrees.	Example: S26°05'17.0" E28°00'21.3" Elev: 1577m Longitude = 28.00586
GPS.Altitude	Displays the current position altitude in meters.	Example: S26°05'17.0" E28°00'21.3" Elev: 1577m Elevation = 1577

Table 3 - Logix5000 Controller Input Image Parameters (continued)

Parameter	Description	Value
GPS.GroundSpeed	Displays the ground speed, in meters per second.	Example: 10.2m/s
GPS.DegreeFromTrueNorth	Displays the degrees from true north.	Example: 279.12°
GPS.MagneticVariationFromTrueNorth	Displays the magnetic variation from true north.	Example: -18.1°
GPS.RelativePositionX	Reserved.	–
GPS.RelativePositionY	Reserved.	–
GPS.RelativePositionZ	Reserved.	–

Logix5000 Controller Output Image

This section provides descriptions for the Logix5000 controller output image parameters.

Local:8:0	{...}	{...}		HT:1756HP_TIME:0:0
Local:8:0.IRIGYear	0		Decimal	INT
Local:8:0.UTC_Offset	0		Decimal	INT
Local:8:0.ReferencePositionX	0.0		Float	REAL
Local:8:0.ReferencePositionY	0.0		Float	REAL
Local:8:0.ReferencePositionZ	0.0		Float	REAL

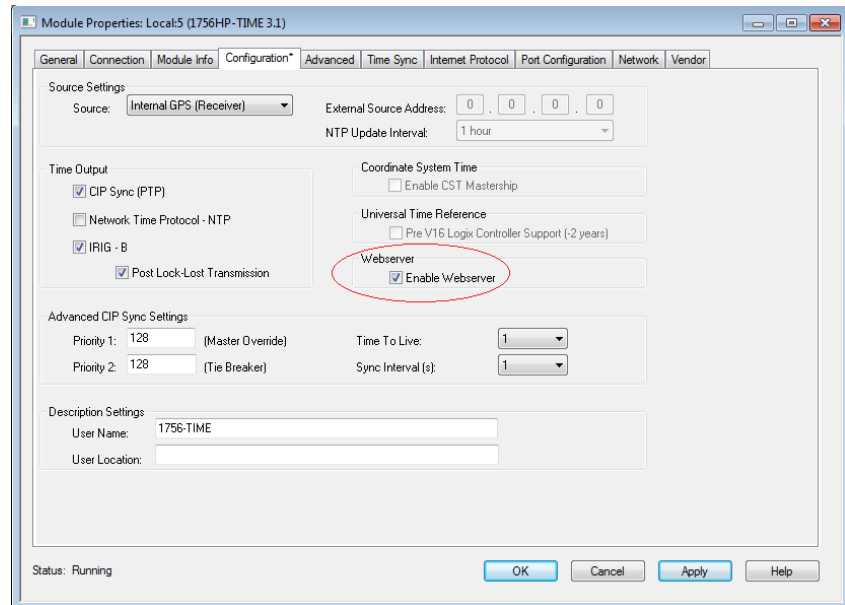
Table 4 - Logix5000 Controller Output Image Parameters

Parameter	Description	Value
IRIGYear	When the module has an IRIG-B time source, the year is not passed over IRIG-B. Enter the current year here in the output image.	Example: 30 April 2014 IRIGYear = 2014
UTC_Offset	The UTC_Offset is used only when the time source is IRIG-B, and PTP output is enabled. IRIG-B provides the UTC time, while PTP requires International Atomic Time (TAI). The difference between the two is the UTC offset.	Example: 30 April 2014 UTC_Offset = 35 Be sure to verify the current UTC offset. The UTC offset changes approximately every 18 months.
ReferencePositionX	Reserved.	–
ReferencePositionY	Reserved.	–
ReferencePositionZ	Reserved.	–

Web Interface

The web interface is disabled by default. Follow these steps to enable the web interface.

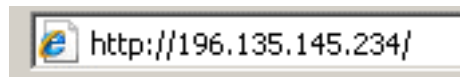
1. On the configuration tab, check Enable Webserver.
2. Click OK.



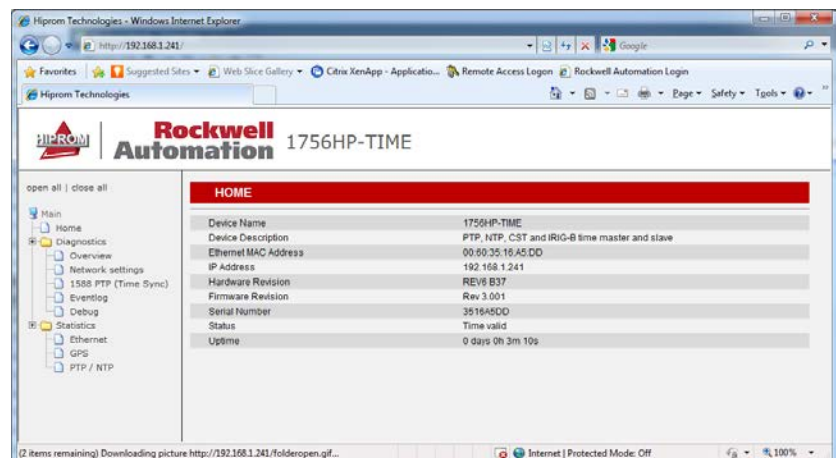
You can access the web interface from any computer that has a web browser.

Enter **http://** and the IP address of the 1756HP-TIME module into the address bar of your web browser.

For example, enter the IP address as shown here.



The web interface provides diagnostics and statistics for the 1756HP-TIME module.



Notes:

Time Synchronization

Topic	Page
1588 Precision Time Protocol (CIP Sync)	23
Network Time Protocol (NTP)	26
IRIG-B	29
CST and UTC Time Conversion	30

1588 Precision Time Protocol (CIP Sync)

The 1756HP-TIME module supports 1588 PTP which enables high-precision time synchronization over an Ethernet network or the chassis backplane. When PTP is selected, both Ethernet and backplane synchronization is enabled. In the case of PTP output, the module outputs time over both the backplane and Ethernet (if connected). In the case of PTP as a time source, the module searches for the best clock on both media.

See the Integrated Architecture and CIP Sync Configuration Application Technique, publication [IA-AT003](#), for details on how to use this object.

IMPORTANT RSLogix 5000 software, version 18.00.00 and later, or the Studio 5000 environment, version 21.00.00 and later, supports 1588 PTP.
RSLogix 5000 software, version 17.00.00 and earlier, does not support 1588 PTP.

IMPORTANT The 1756HP-TIME module supports PTP software version 2.

1756HP-TIME Module as a PTP Master

When locked onto sufficient satellites, the 1756HP-TIME module can synchronize devices to within 100 ns (by using 1588 PTP) when connected directly to the device that is being synchronized. If these devices are connected via a switch that does not support 1588 PTP (transparent and boundary clock modes), the time synchronization degrades because there are more random delays that can affect the mean-delay time calculation used for time synchronization. Therefore, the more switches and interfaces between the 1756HP-TIME module and the devices being synchronized, the bigger the spread of random time delays that can result in lower time sync accuracy.

If you enable CIP Sync on a 1756-EN2T/1756-EN2TR module, the module looks for other 1588 PTP devices and syncs to the device that has the highest-quality clock.

IMPORTANT 1588 PTP uses a multicast address; therefore, set the switches to allow multicast, or have IGMP enabled.

IMPORTANT There is no direct communication between the 1756HP-TIME module Ethernet ports and a Logix5000 controller. If the 1756HP-TIME module resides in a remote Logix rack, it needs to communicate through an EN2T(R) module in the same rack.

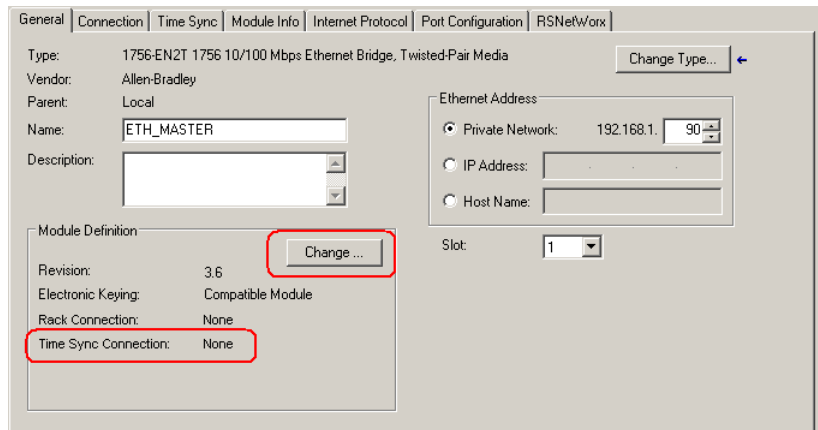
The 1756-EN2T/1756-EN2TR modules are boundary clocks that can be a slave clock on one interface, and a master clock on another interface. The modules can act as a transparent gateway when a Logix5000 controller uses the time Grandmaster (the 1756HP-TIME module) on the network. The 1756-EN2T/1756-EN2TR module must have CIP Sync and Motion enabled. See [Configure the Ethernet Module/Controller PTP/CIP Sync Settings on page 24](#).

IMPORTANT Most devices supporting 1588 PTP defaults to PTP Enabled: FALSE. PTP must be enabled on the devices before time synchronization can begin.

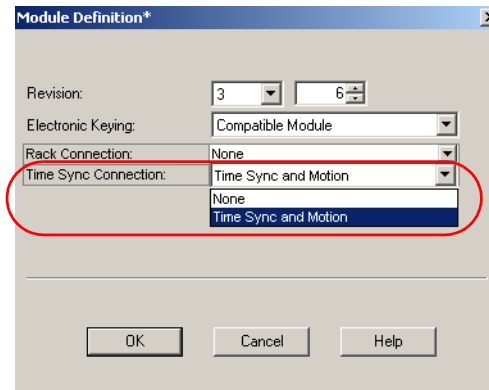
Configure the Ethernet Module/Controller PTP/CIP Sync Settings

Follow these steps to configure the PTP/CIP Sync settings of the 1756-EN2T/1756-EN2TR module and controller.

1. Open the AOP for the Ethernet module.
2. From the General tab, under Module Definition, click Change.



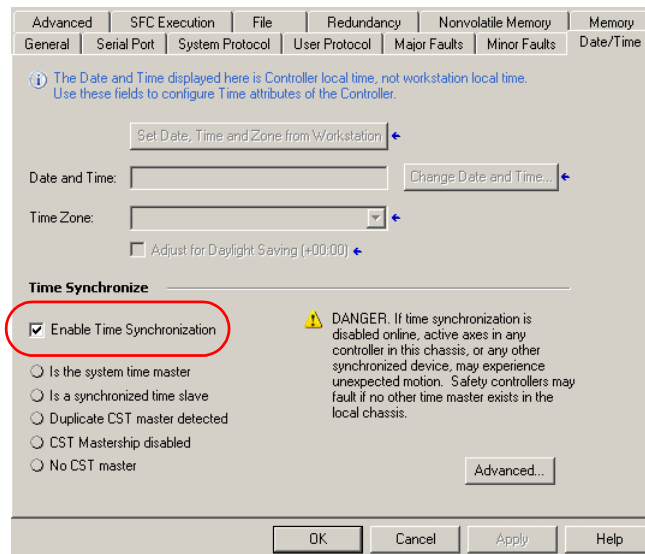
- From the Time Sync Connection pull-down menu, choose Time Sync and Motion.



- Click OK.

The 1756-EN2T/1756-EN2TR module is now configured for PTP synchronization.

- To enable synchronization on the controller, open the Controller AOP.
- On the Date/Time tab, check the Enable Time Synchronization box.



The Logix5000 controller looks for the highest-quality clock on the backplane.

- Click OK.

The settings of the Ethernet module and controller module are now configured for time sync and motion.

PTP as a Time Source

The 1756HP-TIME module can be set to be a PTP slave. The module synchronizes to the best PTP clock on either the backplane or the Ethernet network, using the best master clock algorithm (BMC).

IMPORTANT The TIME module cannot act as a boundary clock. If PTP is selected as the input time source, then PTP output is disabled.

Using PTP as the time source enables NTP and IRIG-B as the output modes. Therefore, the accuracy is limited to the accuracy of the respective output modes.

IMPORTANT The accuracy of the PTP time is dependent on the quality and reliability of the Ethernet network. The PTP algorithm allows for network delays, but needs a constant delay to synchronize accurately. PTP switches prioritize PTP messages to keep the delay constant, and are preferred for PTP networks.

Network Time Protocol (NTP)

This section describes how to configure the 1756HP-TIME module as an NTP server or an NTP client.

1756HP-TIME Module as an NTP Server

The 1756HP-TIME module supports NTP, which provides time synchronization over an Ethernet network. NTP clients can be synchronized to approximately 1ms of the NTP client, depending on the network configuration and reliability.

NTP is typically used when synchronizing personal computers or domain controllers. You can use the Hiprom Software Network Time Protocol (HSNTP) application to set the Windows time service on a personal computer to synchronize to the 1756HP-TIME module. Download the HSNTP application from www.hiprom.com.

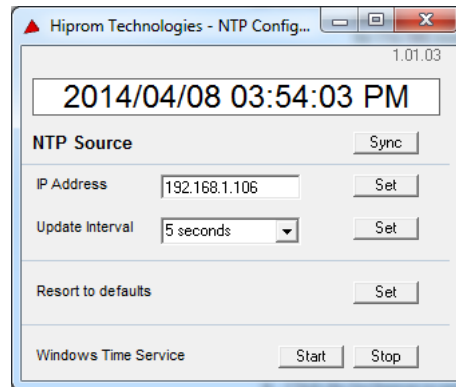
IMPORTANT The 1756HP-TIME module supports NTP version 3, RFC1305.

IMPORTANT When a computer is on a domain, it tries to synchronize to the domain controller. Therefore, you can set up the domain controller to synchronize to the 1756HP-TIME module.

Configure Windows NTP Settings

Follow these steps to configure the Windows time service to synchronize to the 1756HP-TIME module. Note that the time module and computer need to be on the same Ethernet network to use NTP.

1. Open the HSNTP application.



2. Enter the IP address of the NTP source (the 1756HP-TIME module).
3. Click Set to update the IP address.
4. From the Update Interval pull-down menu, choose an update interval time.
5. Click Set to update the update interval time.
6. Click Stop to stop the time service and load the new settings.
7. Click Start to start the time service.
8. Click NTP Source Sync to synchronize the time with the NTP server.

The Windows time service is now configured to synchronize to the 1756HP-TIME module. To reset the defaults, click Set next to 'Resort to defaults'.

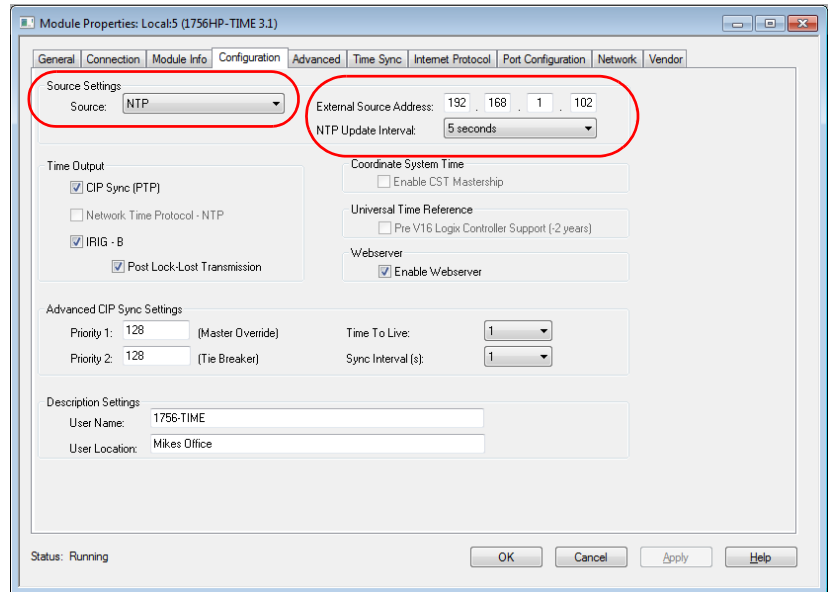
1756HP-TIME Module as an NTP Client

You can configure the 1756HP-TIME module to connect to an external NTP source, and then output the time as PTP or IRIG-B time.

TIP You can also use the SNTP protocol for the source.

Follow these steps to configure the 1756HP-TIME module to an NTP source.

1. Open the Time module AOP in RSLogix 5000 software.



2. Click the Configuration tab.
3. From the Source Settings pull-down menu, choose NTP as the source.
The External Source Address and NTP Update Interval options become available.
4. In the External Source Address field, enter the IP address of the NTP source.
5. From the NTP Update Interval pull-down menu, choose the update interval for the 1756HP-TIME module to adjust its internal clock to the NTP source.

The update interval can range from 5 seconds to 1 week.

TIP The frequency of the update interval affects the accuracy of the time from the 1756HP-TIME module. If the time is not adjusted by the NTP source, the time can drift by up to 10 μ s/s depending on external factors, such as temperature and humidity.

6. Click OK.

The 1756HP-TIME module is now configured to an NTP source.

Time Adjustments

To keep the time of the 1756HP-TIME module as smooth as possible, the time is adjusted in small increments (ramp) until it is equal to the NTP source. If the time of the 1756HP-TIME module drifts more than 1 second off of the source time, the 1756HP-TIME module jumps to the time given by the NTP source.

IMPORTANT The accuracy of the NTP time depends on the quality and reliability of the Ethernet network. If the update time is set too high, the clock can drift and jump. Rockwell Automation recommends a value of 30 seconds or less for optimal accuracy.

Loss of Communication

If the 1756HP-TIME module loses its connection to the NTP source (if the source does not reply after the update interval time has expired) then the PPS and SYNC indicators illuminate red, the TimeValid bit is set to FALSE, and the 1756HP-TIME module runs on its internal oscillator until the NTP source becomes available again. The 1756HP-TIME module tries to reconnect to the NTP source every 10 seconds after a loss of communication.

IMPORTANT NTP time as a source is accurate to 10 ms; therefore, the synchronization accuracy of the output 1588 PTP is limited to 10 ms.

IRIG-B

The 1756HP-TIME module can be used as an IRIG-B master clock (outputs the IRIG-B signal) or an IRIG-B slave clock (receives the IRIG-B signal from another master clock). The time is transmitted over a coaxial cable, which plugs into the BNC connector at the bottom of the 1756HP-TIME module.

IMPORTANT The 1756HP-TIME module currently supports the IRIG-B-122 format.

1756HP-TIME Module as an IRIG-B Master

When the 1756HP-TIME module is an IRIG-B master clock, it sends the current time over the IRIG-B network and synchronizes slave clocks to approximately 1ms.

Note that the 1756HP-TIME module does not send the current year over the IRIG-B network.

1756HP-TIME Module as an IRIG-B Slave

The 1756HP-TIME module can synchronize to an external IRIG-B source using coaxial cable. The source needs to output IRIG-B 122 format time.

IMPORTANT The current year for the IRIG-B format is not supported by the 1756HP-TIME module. Therefore, you need to supply the current year in the output image of the module in RSLogix 5000 software. A simple rung of ladder logic increases the year without your intervention.

You can also use the 1756HP-TIME module to output 1588 PTP and NTP while receiving time from an IRIG-B source.

IMPORTANT If using PTP as an output, you must also supply the UTC offset in the output image. The current value is 35, but this changes periodically. To keep up to date, this page lists the current value.
http://en.wikipedia.org/wiki/Leap_second.

IMPORTANT If the 1756HP-TIME module has an IRIG-B time source that is accurate to 1 ms, then the synchronization accuracy when using 1588 PTP is also limited to 1ms.

CST and UTC Time Conversion

This process is not needed for RSLogix 5000 software version 18.00.00 or later.

The 1756HP-TIME module can also be used to convert CST or UTC time formats to Gregorian time (year, day, month, and so on). The GPS module accurately tracks the local CST and UTC time to the current Gregorian time. Therefore, the different drifting rates of the CST are also compensated for.

In a sequence-of-events (SOE) solution, the SOE module (for example, the 1756-IB16ISOE module) reports the event time in either CST or UTC time formats.

IMPORTANT One CST master clock must be present for a sequence-of-events solution. Verify that there is no duplicate CST master clock. This is indicated in 1756HP-TIME module and the Logix controller.

These values are passed to the 1756HP-TIME module (by using unconnected message blocks) and converted to Gregorian time. The 1756HP-TIME module tracks the last 12 hours of CST, UTC, and Gregorian time formats. If an event has occurred, you have up to 12 hours to convert the event time. See [CST/UTC Conversion Message Blocks on page 37](#) for these message formats.

The CST offset can also be used to adjust the wallclock by using a set system values (SSV) instruction to pass the CST offset.

Specifications

Topic	Page
Technical Specifications	31
Cable Specifications	31
GPS Antenna Specifications	32
Dimensions	33

Technical Specifications

This table lists the technical specifications for the 1756HP-TIME module.

Attribute	Value
Power requirements	All power is derived from the 1756 backplane. Current draw at 5V = 736 mA Current draw at 24V = 1.64 mA
Power consumption	
Operating temperature	0...50 °C (32...122 °F)
Storage temperature	
Relative humidity	5...95% noncondensing
Enclosure type rating	IP20
Ethernet conductor	CAT5 STP

Cable Specifications

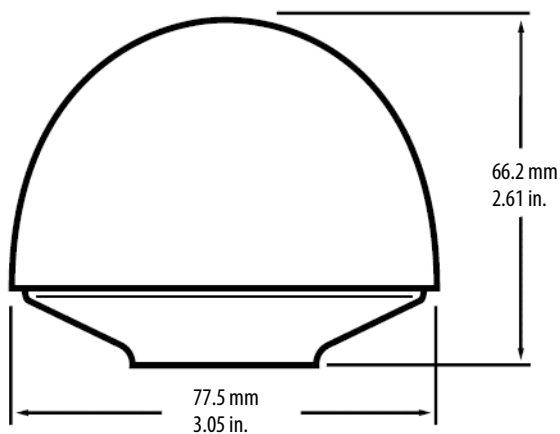
This table lists the cable specifications for the 1756HP-TIME module.

Attribute	Value
Cable type	Type RG58 or equivalent
Impedance	50 Ω
Shield	Foil or copper braid (100% coverage)
Connectors	SMA male to TNC male
Signal attenuation	At 1.5 GHz < 10 dB (less than 6 dB recommended)

GPS Antenna Specifications

This section lists the specifications for the Trimble Bullet III 3.3V DC GPS antenna, part number 57861-20.

Antenna	Attribute	Value
Trimble Bullet III 3.3V DC GPS antenna Trimble Part Number 57861-20 (sold separately; not sold by Rockwell Automation)	Voltage	3.3V DC
	Environment	Outside (weather proof)
	Temperature range	-40...85 °C (-40...185 °F)
	Dimensions, W x H	77.5 x 66.2 mm (3.05 x 2.61 in.)
	Weight	170.0 g (6.0 oz)
	Connector	TNC female
	Mounting	3/4 in. pipe thread

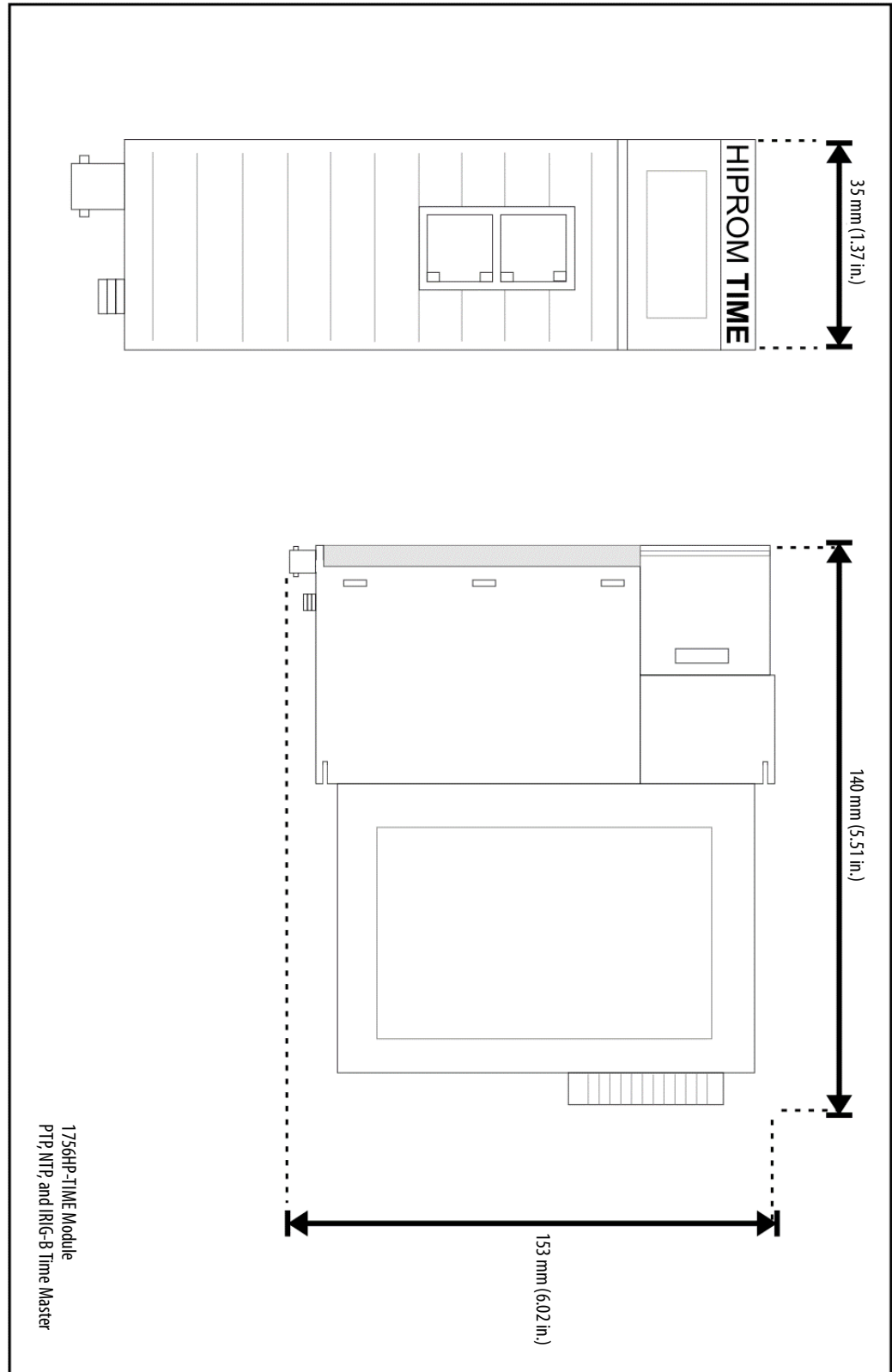


For more information about the Trimble Bullet III 3.3V GPS antenna, part number 57861-20, visit the Trimble website at <http://www.trimble.com/>.

IMPORTANT Contact a Trimble sales representative to purchase the Trimble Bullet III 3.3V GPS antenna.
Rockwell Automation does not provide GPS antennas.

Dimensions

This drawing shows the dimensions of the 1756HP-TIME module.



Notes:

1756HP-TIME Module Status

Topic	Page
Status Indicators	35
Status Messages	36

The display on the front of the 1756HP-TIME module provides status indicators and status messages.



Status Indicators

The 1756HP-TIME module provides three status indicators on the display.

Status Indicators	Description
PPS	This indicator is toggled every second for 100 ms at the exact PPS. Green = the module is locked on the time source. Red = the module is not locked on the time source. When the module is set to be an IRIG-IN or slave clock, this indicator is toggled every time a reference frame is received.
SYNC	Green = the module is locked on the time source. Red = the module is not locked on the time source.
OK	Green = the module has started successfully. Red = the module has a hardware fault.

Status Messages

The 1756HP-TIME module provides the following status messages on the display.

Status Message	Description
192.168.1.100	Indicates the IP address of the 1756HP-TIME module.
Source: X	Indicates the current time source being used. The sources are GPS, IRIG-B, NTP, and PTP.
BOOTP Enabled	Indicates that BOOTP is currently active on the module. Use a BOOTP server to set the IP address.
Sat Count X	The GPS receiver is locked onto X number of satellites.
No Time Lock	The time has not been received.
Time Locked	The module is locked to the selected time source.
Firmware update in progress, do not power down!	Indicates that a firmware upgrade is in progress.
OK	Indicates that the module is operating correctly.
RESET	Indicates the module has received a reset command.
TEST	The module displays this on startup when it is performing self-diagnostics to make sure the hardware is working properly.
PTP Source X	Displays either the IP address (Ethernet CIP Sync) or slot number (Backplane CIP Sync) of the PTP source.
PTP Source Unreachable	Indicates that there is no PTP source on either the backplane or Ethernet network.
NTP Source X	Displays the IP address of the NTP Source
NTP Source Unreachable	Indicates that there is no NTP source on Ethernet network.
Please provide IRIG-B Year	The Output image does not have a valid year for the IRIG-B signal.
BL. Err X - Y	An error has occurred in initializing the module. X is the error code, and Y is the description of the error.
Err X - Y	An error has occurred during operation. X is the error code, and Y is the description of the error.

CST/UTC Conversion Message Blocks

Topic	Page
CST to UTC and Gregorian Time Conversion	37
UTC to Gregorian Time Conversion	37
Satellite Information	38

CST to UTC and Gregorian Time Conversion

This table shows the structure of the message block for the CST to UTC and Gregorian time conversion.

Settings and Elements	Attribute	Value
Message settings	Message type	CIP generic
	Service type	Custom
	Service code	36h
	Class	72h
	Instance	01h
	Attribute	03h
Date elements	Source element	Event_CST[0] ⁽¹⁾
	Source length	8
	Destination	Event.Year ⁽¹⁾

(1) See the example code at <http://www.hiprom.com/>.

UTC to Gregorian Time Conversion

This table shows the structure of the message block for the UTC to Gregorian time conversion.

Settings and Elements	Attribute	Value
Message settings	Message type	CIP generic
	Service type	Custom
	Service code	36h
	Class	72h
	Instance	01h
	Attribute	04h
Date elements	Source element	Event_UTC[0] ⁽¹⁾
	Source length	8
	Destination	Event.Year ⁽¹⁾

(1) See the example code at <http://www.hiprom.com/>.

Satellite Information

This table shows the structure of the message block for the satellite information.

Settings and Elements	Attribute	Value
Message settings	Message type	CIP generic
	Service type	Custom
	Service code	36h
	Class	72h
	Instance	01h
	Attribute	09h
Date elements	Source element	-
	Source length	0
	Destination	SatInformation[0].PRN ⁽¹⁾

(1) See the example code at <http://www.hiprom.com/>.

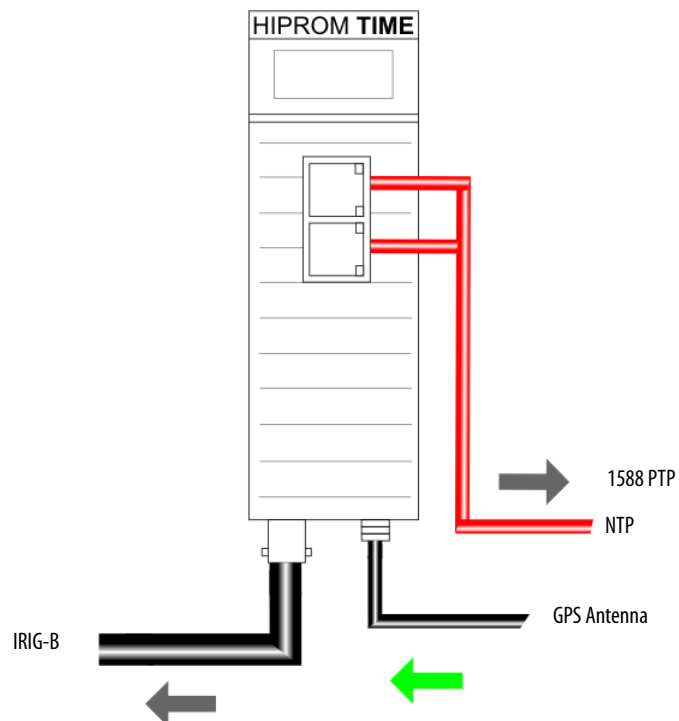
Operating Modes

Topic	Page
GPS Source	39
IRIG-B Source	40
PTP Source	40
NTP Source	41

GPS Source

The GPS source mode can have the following configurations:

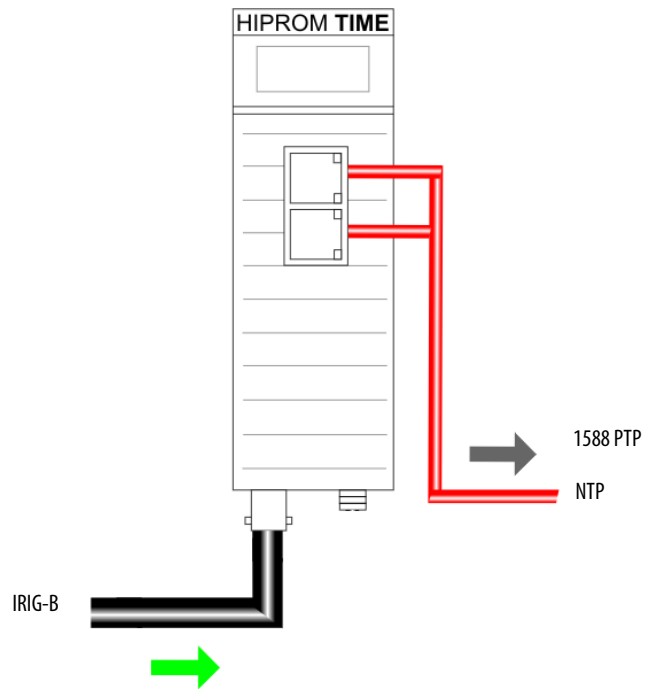
- Source: GPS
- Outputs: IRIG-B, 1588 PTP/CIP Sync, NTP, and input/output assemblies.



IRIG-B Source

The IRIG-B source mode can have the following configurations:

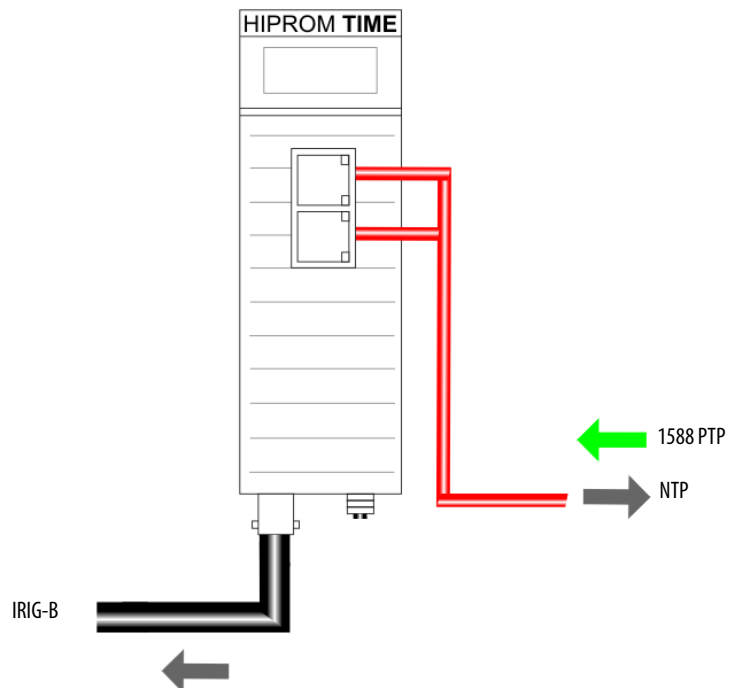
- Source: IRIG-B 122
- Outputs: 1588 PTP/CIP Sync, NTP, and input/output assemblies



PTP Source

The PTP source mode can have the following configurations:

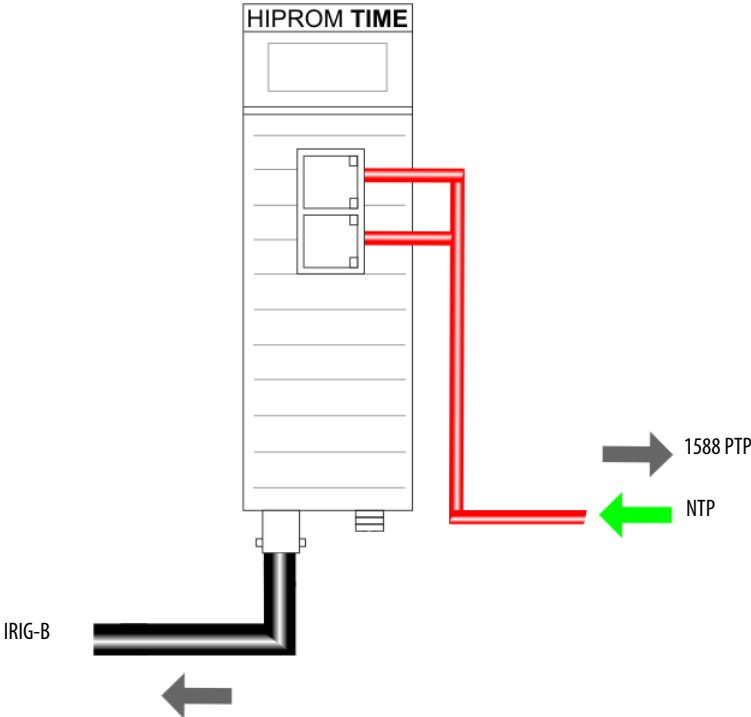
- Source: 1588 PTP/CIP Sync, either over Ethernet or the backplane
- Outputs: IRIG-B, NTP, and input/output assemblies



NTP Source

The NTP source mode can have the following configurations:

- Source: NTP, over Ethernet
- Outputs: IRIG-B, 1588 PTP/CIP Sync, and input/output assemblies



Notes:

GPS Antenna Cable Extensions

Topic	Page
Cable Extensions	43
Lightning Protection Devices	45

Cable Extensions

The 1756HP-TIME module ships with a 5 m (16 ft) RG58 coaxial cable. Rockwell Automation does not supply longer cables. If you need a longer cable for your installation, follow the guidelines in this appendix to specify and purchase extensions from a cable supplier.

Determine the Length of the Cable

Determine the length of the cable by measuring the cable path from the 1756HP-TIME module to a position that provides the antenna with a 360 degree clear view of the sky. Plan your installation so the length of the cable path is as short as possible.

Determine the Attenuation Rate of the Cable

Determine the type and quality of cable and whether an amplifier is required. Use the cable attenuation tables of the manufacture. Determine the over-signal attenuation at 1.5 GHz. Keep the attenuation below 10 dB. Rockwell Automation recommends no more than 6 dB for better performance.

[Table 5](#) provides typical attenuation values (in dB) for common types of 50 Ω coaxial cable at 1.5 GHz. Light green shading shows acceptable levels of attenuation below 10 dB. Dark green shading is in the recommended range.

Table 5 - - Typical Attenuation Values in dB for Cable Extension, m (ft)

	5 (16)	10 (33)	15 (49)	20 (66)	25 (82)	30 (98)	35 (115)	40 (131)	45 (148)	50 (164)	55 (180)	60 (197)	65 (213)	70 (230)	75 (246)	80 (262)	85 (279)	90 (295)	95 (312)	100 (328)
Cable Type	Typical Attenuation Values in dB																			
RG58	3.1	6.3	9.4	12.5	15.7	18.8	21.9	25.0	28.2	31.3	34.4	37.6	40.7	43.8	47.0	50.1	53.2	56.3	59.5	62.6
LMR-240	1.6	3.2	4.9	6.5	8.1	9.7	11.3	13.0	14.6	16.2	17.8	19.4	21.0	22.7	24.3	25.9	27.5	29.1	30.8	32.4
LMR-400	0.8	1.7	2.5	3.4	4.2	5.0	5.9	6.7	7.6	8.4	9.2	10.1	10.9	11.8	12.6	13.5	14.3	15.1	16.0	16.8
LMR-600	0.5	1.1	1.6	2.2	2.7	3.3	3.8	4.4	4.9	5.4	6.0	6.5	7.1	7.6	8.2	8.7	9.2	9.8	10.3	10.9

IMPORTANT LMR-400 and LMR-600 cables are too stiff and heavy to connect directly to the small SMA connector on the 1756HP-TIME module.

For these cables, use a fly lead to wire the connector.

If the attenuation from a lower loss cable (such as LMR 600) is greater than 10 dB, you need to use an amplifier. Rockwell Automation does not supply amplifiers. If you need an amplifier for your installation, follow the guidelines in this appendix to specify and purchase an amplifier from a cable supplier. Amplifiers of 15 and 30 dB gain are typically available.

Verify that the signal gain through the amplifier, minus the attenuation from the cable, is in the range of +10 dB (gain) to -10 dB (loss). Mount the amplifiers as close to the antenna as possible without exposing them to the weather.

IMPORTANT Amplifiers must pass the 3.3V DC supplied by the GPS receiver to power the internal antenna amplifier, or provide the 3.3V DC internally.

If the amplifier blocks the DC component, it also needs to supply a dummy load to prevent the receiver from giving a false No Antenna fault.

Example – Determining Cable Requirements

Cable length required is 30 m (100 ft).

From [Table 5 on page 43](#), LMR-240 has a 9.7 dB loss that is acceptable, or LMR-400 can be used with a 5 dB loss. Because LMR-400 cannot be connected directly to the 1756HP-TIME module, a shorter length of RG58 can be used.

The antenna cable extension needs to connect to an SMA female connector on the 1756HP-TIME module, and a TNC female connector on the antenna. So the cable connectors need to be SMA male to TNC male.

TIP Rockwell Automation recommends a TNC bulkhead connector for cable-to-cable connections.

Cable Extension Kits

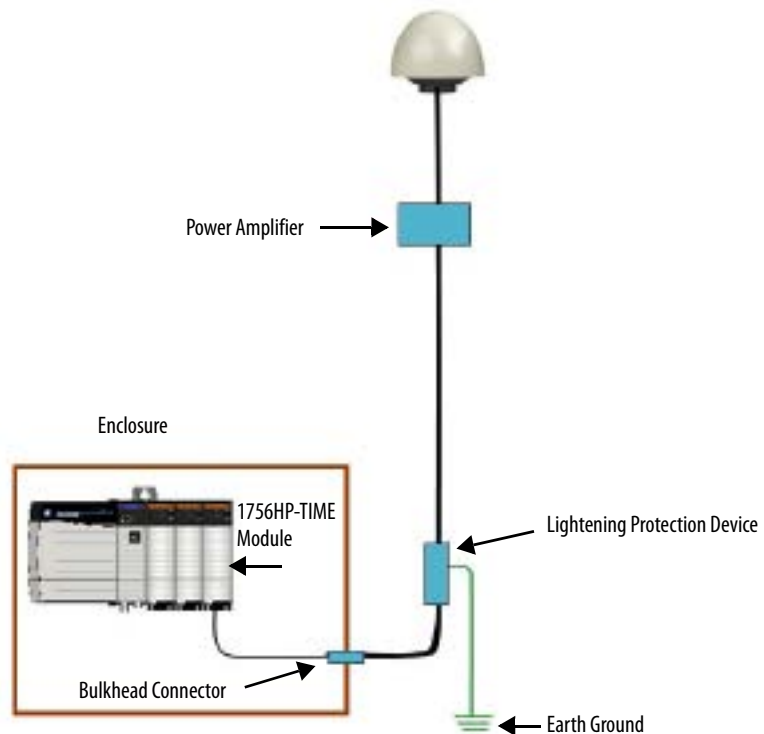
The cable extension kits in [Table 6 on page 45](#) can be purchased from Millimeter Wave Technologies. For more information, visit the Millimeter Wave Technologies website, <http://mmwavetech.com/>, or call 1-480-941-2990.

Table 6 - Cable Extension Kits

Part No.	Cable Length m (ft)	Fly Lead 1	Bulkhead Connector	Main Cable	Amplifier	Fly Lead 2
ACK33	10 (33)	-	-	RG58-ST-33	-	-
ACK50	15 (50)	-	-	LMR240-ST-50	-	-
ACK66	20 (66)	-	-	LMR240-ST-66	-	-
ACK100	30 (100)	RG58-ST-6	BULKH-TT	LMR400-TT-100	-	-
ACK130	40 (130)	RG58-ST-6	BULKH-TT	LMR400-TT-130	-	-
ACK150	46 (150)	RG58-ST-6	BULKH-TT	LMR400-TT-150	-	-
ACK175	53 (175)	RG58-ST-6	BULKH-TT	LMR600-TT-175	-	-
ACK200	61 (200)	RG58-ST-6	BULKH-TT	LMR600-TT-200	-	-
ACK260	79 (260)	RG58-ST-6	BULKH-TT	LMR600-TT-260	A11-P110/3.3-TF 15 dB	RG58-TT-6
ACK300	300 (91)	RG58-ST-6	BULKH-TT	LMR600-TT-300	A11-P110/3.3-TF 15 dB	RG58-TT-6
ACK360	110 (360)	RG58-ST-6	BULKH-TT	LMR600-TT-360	A11-P110/3.3-TF 15 dB	RG58-TT-6

Lightning Protection Devices

Rockwell Automation recommends lightning protection devices that are capable of receiving multiple strikes, with a clamping voltage above the 3.3V DC that is required by the antenna (such as a Polyphaser DGXZ+06NFNF device). Mount the lightning protection device outside, with an earth ground.



Notes:

The following terms and abbreviations are used throughout this manual. For definitions of terms not listed here, refer to the Allen-Bradley Industrial Automation Glossary, publication [AG-7.1](#).

- Add-On Instructions** Add-on instructions are custom RSLogix 5000 software and the Logix Designer application instructions that you design and create. With add-on instructions, you can create new instructions for sets of commonly-used logic, provide a common interface to this logic, and provide documentation for the instruction.
- Best Master Clock Algorithm** The algorithm performed by each node to determine the clock that will become the master clock on a subnet and the Grandmaster clock for the domain. The algorithm primarily compares priority1, clock quality, priority2, and source identity to determine the best master among available candidates.
- Boundary Clock** A boundary clock has more than one port, for example, a managed Ethernet switch, and perform the duties as a master or slave clock.
- Common Industrial Protocol (CIP)** The common industrial protocol (CIP) is an open industrial protocol for industrial automation applications.
- CIP Sync** CIP sync is the Open DeviceNet Vendors Association (ODVA) implementation of the Institute of Electrical and Electronics Engineers (IEEE) 1588-2008 standard. The protocol provides a mechanism to synchronize clocks between controllers, I/O devices, and other automation products.
- Clock** A node participating in the PTP protocol that is capable of providing a measurement of the passage of time since a defined epoch. There are three types of clocks in IEEE 1588-2008: boundary, transparent, and ordinary clocks.
- Coordinated System Time (CST)** In its simplest form, CST is a backplane clock propagated between all modules on the ControlLogix backplane. Its presence is necessary whenever time coordination between modules in the chassis is required.
- Device Level Ring (DLR)** A DLR network is a single-fault tolerant ring network intended for the interconnection of automation devices. This topology is also implemented at the device level. No additional switches are required.
- Domain** A logical grouping of clocks that synchronize to each other by using the PTP protocol, but that are not necessarily synchronized to clocks in another domain.
- Greenwich Mean Time (GMT)** GMT is the mean solar time of the longitude (0°) of the former Royal Observatory at Greenwich, England, or Greenwich meridian. UTC replaced GMT as the basis for the main reference time scale or civil time in various regions on 1 January 1970.
- Global Positioning System (GPS)** GPS is a satellite-based navigation system made up of a network of 24 satellites placed into orbit by the U.S. Department of Defense. GPS provides reliable timing services (as well as positioning and navigation) on a continuous basis in all weather, day and night, anywhere on or near the Earth that has an unobstructed view of four or more GPS satellites.

- Grandmaster (GM)** Within a domain, a clock that is the ultimate source of time for clock synchronization by using the CIP sync protocol.
- Local Clock** The clock on a device.
- Master Clock (M)** In the context of a single CIP sync communication path, a clock that is the source of time to which all other clocks on that path synchronize on a local subnet.
- Network Time Protocol (NTP)** A protocol for synchronizing the clocks of computer systems over packet-switched, variable-latency data networks.
- Priorities (P1 and P2)** Parameters that can override the best master clock algorithm to choose a different Grandmaster.
- Precision Time Protocol (PTP)** The PTP protocol is a time-transfer protocol defined in the CIP sync IEEE 1588-2008 standard that allows precise synchronization of networks.
- Slave Clock** A clock that synchronizes its local clock to a master time.
- Sequence of Events (SOE)** Sequence of events is any events that need to be compared against a second event.
- Synchronized Clocks** Two clocks are synchronized to a specified uncertainty if they have the same epoch and their measurements of the time of a single event at an arbitrary time differ by no more than that uncertainty.
- System Time** The absolute time value as defined by CIP sync in the context of a distributed time system where all devices have a local clock that is synchronized with a common master clock. System time is a 64-bit integer value in units of nanoseconds or microseconds with a value of 0 corresponding to an epoch of January 1, 1970.
- Time Sync Object** The time sync object provides a Common Industrial Protocol (CIP) interface to the IEEE 1588 (IEC 61588) standard for a precision clock synchronization protocol for networked measurement and control systems. This information can be collected to be used in diagnostics.
- Transparent Clocks** A device that measures the time taken for a PTP event message to transit the device and provides this information to clocks receiving this PTP event message.
- Coordinated Universal Time (UTC)** The time standard for 'civil time' that is time at the Prime Meridian (0 degrees longitude). The time does not include time zone or Daylight Saving Time offsets. System time is the same as UTC.
- WallClockTime (WCT)** WallClockTime is the time of the controller based on UTC system time.

Numerics

1588 Output PTP 18
1588 PTP 23

A

accuracy of NTP time 29

Add-on Profile 8

amplifier

determine if needed 44
dummy load 44
mounting 44
signal gain 44

AOP

configuration parameters
descriptions 14
example 13
download 10

attenuation values 43

B

backplane 7

best master clock algorithm 26

BMC 26

BOOTP/DHCP server

access 9
download and install 9
set IP address of module 9

boundary clock 24, 26

bulkhead connector 44

C

cable extension kits 44

clock

master 7
slave 7

coaxial cable 43

attenuation 43

communication loss 29

configure the 1756HP-TIME module 10

CST 6

master clock 14, 18
offset 30

current time source 18

D

diagnostics 21

dimensions

1756HP-TIME module 33
GPS antenna 32

domain controller 26

E

Ethernet connectors 7

F

firmware

download 10
error 9
revision 5

G

GPS antenna

installation examples 8

GPS coordinates 12

GPS SMA connector 7

Grandmaster 24

Gregorian time 30

H

high-precision time synchronization 23

HSNTP 26

I

input image parameters

description 18
example 17

internal oscillator 29

IP packet 14

IRIG-B 6

coaxial connector 7
master clock 29
output 18
slave clock 29

IRIG-B-122 format 29

L

lightning protection 45

LLA 6

M

master clock 7

multicast address 24

N

NTP 6

client 26
output 18
server 14, 26
source 28
version 3, RFC1305 26

O**operating modes**

- GPS source 39
- IRIG-B source 40
- NTP source 41
- PTP source 40

output image parameters

- descriptions 20
- example 20

P**PTP 6**

- as a time source 23
- output 23
- slave 26
- sync packet 14

R**RG58 coaxial cable 43****S****satellite**

- GPS coordinates 12
- position 13
- signal strength 12

sequence-of-events solution 30**simulation mode 15****slave clock 7****SNTP protocol 28****SOE module 30****SSV instruction 30****statistics 21****status**

- indicators 35
- messages 36
- view 7

synchronization accuracy 29, 30**T****TAI 20****time**

- adjustments 29
- drift 28, 29
- Grandmaster 24
- input 12
- output 12
- source 12
- sync accuracy 23
- synchronization
 - methods, standards, and protocols 6

time format conversion

- CST to Gregorian 30, 37
- CST to UTC 37
- UTC to Gregorian 30, 37

transparent gateway 24**U****UTC 6****UTC offset 20, 30****W****web interface 21****Windows time service 27**

Rockwell Automation Support

Rockwell Automation provides technical information on the Web to assist you in using its products.

At <http://www.rockwellautomation.com/support> you can find technical and application notes, sample code, and links to software service packs. You can also visit our Support Center at <https://rockwellautomation.custhelp.com/> for software updates, support chats and forums, technical information, FAQs, and to sign up for product notification updates.

In addition, we offer multiple support programs for installation, configuration, and troubleshooting. For more information, contact your local distributor or Rockwell Automation representative, or visit <http://www.rockwellautomation.com/services/online-phone>.

Installation Assistance

If you experience a problem within the first 24 hours of installation, review the information that is contained in this manual. You can contact Customer Support for initial help in getting your product up and running.

United States or Canada	1.440.646.3434
Outside United States or Canada	Use the Worldwide Locator at http://www.rockwellautomation.com/rockwellautomation/support/overview.page , or contact your local Rockwell Automation representative.

New Product Satisfaction Return

Rockwell Automation tests all of its products to help ensure that they are fully operational when shipped from the manufacturing facility. However, if your product is not functioning and needs to be returned, follow these procedures.

United States	Contact your distributor. You must provide a Customer Support case number (call the phone number above to obtain one) to your distributor to complete the return process.
Outside United States	Please contact your local Rockwell Automation representative for the return procedure.

Documentation Feedback

Your comments will help us serve your documentation needs better. If you have any suggestions on how to improve this document, complete this form, publication [RA-DU002](#), available at <http://www.rockwellautomation.com/literature/>.

Rockwell Automation maintains current product environmental information on its website at <http://www.rockwellautomation.com/rockwellautomation/about-us/sustainability-ethics/product-environmental-compliance.page>.

Rockwell Otomasyon Ticaret A.Ş., Kar Plaza İş Merkezi E Blok Kat:6 34752 İçerenköy, İstanbul, Tel: +90 (216) 5698400

www.rockwellautomation.com

Power, Control and Information Solutions Headquarters

Americas: Rockwell Automation, 1201 South Second Street, Milwaukee, WI 53204-2496 USA, Tel: (1) 414.382.2000, Fax: (1) 414.382.4444
Europe/Middle East/Africa: Rockwell Automation NV, Pegasus Park, De Kleetlaan 12a, 1831 Diegem, Belgium, Tel: (32) 2 663 0600, Fax: (32) 2 663 0640
Asia Pacific: Rockwell Automation, Level 14, Core F, Cyberport 3, 100 Cyberport Road, Hong Kong, Tel: (852) 2887 4788, Fax: (852) 2508 1846