



To contribute articles to  
IndiaWilds Newsletter mail to -  
[sabyasachi.patra@indiawilds.com](mailto:sabyasachi.patra@indiawilds.com)

### Inside this issue:

CSR to Save Wild India	1
Conservation News	6
Book Review: Whispers from the Wild	8
Equipment Discussions	10
Wilderness Updates	22
Natural History	26
IndiaWilds Android App	28
Image of the Month	29
Wildlife Photography	30

# IndiaWilds Newsletter

Vol 6. Issue IX

September 2014

## CSR to Save Wild India

India's wilderness areas and wildlife are battling tremendous odds to survive. From time to time there have been many good ideas and suggestions offered to the Government to save our wilderness areas. Unfortunately these ideas, suggestions and projects languish due to want of money. So if we need to save India's wilderness areas and its denizens, then we need to come out with a big idea which can immediately be implementable.

A few years ago realising the need to have an inviolate core area, a scheme was started to compensate families 10lakh rupees each to relocate outside the reserves. The MoEF had sought funds from the finance ministry towards this without much success. So this project continues to languish.

The MoEF had set up an Elephant Task force and the report was also released with much hype. The elephant was given the status of National Heritage Animal. However, the Government's action ended there. The elephant, unaware about its supposedly enhanced status, continues to be killed by fast moving trains, poached for its ivory, electrocuted by villagers when they enter the fields. Much of the range of elephants remain outside our protected areas. With increased human settlements in its migratory corridors



**Wild Asiatic Elephant (*elephas maximus*)**



the conflicts continue to increase. The Government turns a blind's eye as it can't imagine shelling out the money to buy back land, as the cost of real estate is spiralling.

In the backdrop of many such worthwhile projects biting the dust, there is a need to be innovative in raising funds for these causes. Fortunately we have one such easily implementable big idea to raise funds.

### Govt.'s CSR law to the rescue:

The union Ministry of Corporate Affairs has made it mandatory for the companies with minimum net worth of 500 crores or turnover of 1000 crores or net profit of 5 crores in any financial year to spend atleast 2% of the average of the net profits of the preceding three years towards Corporate Social Responsibility.\* (*Source: Companies Act 2013, page 80*). Most of these corporates simply don't know how to spend this money as in this era of trying to ensure a lean organisation corporates don't have sufficient manpower to identify, verify and spend in eligible projects. Since the law has a clause that they can invest in development projects initiated by the PM or the Central Government. So, if we can consolidate the amounts that these corporates or atleast the public sector companies need to spend, then very large projects can be fruitfully funded.

According to the Public Enterprises Survey, the net profit of profit making CPSEs in the year 2012-2013 is 135048.07 crores. So according to the CSR law, the total CSR contribution for the Central Public Sector Enterprises for the FY 2012-2013 at 2% of net profit comes to Rs. 2700 crores. This is a huge amount considering the fact that the budget outlay for the entire MoEF for 2014-1015 is 2043 crores, which is 387 crores less than the previous years allocation.

### Top 10 Profit Making CPSEs (2012-2013)\*\*

Sl. No.	Name of the CPSEs	Net Profit
1	Oil & Natural Gas Corporation Ltd.	20,925.70
2	NTPC Ltd.	12,619.39
3	Fertiliser Corporation of India Ltd.	10,778.08
4	Coal India Ltd.	9,794.32
5	Bharat Heavy Electricals Ltd.	6,614.73
6	NMDC Ltd.	6,342.37
7	Indian Oil Corporation Ltd.	5,005.17
8	Power Finance Corporation	4,419.60
9	Power Grid Corporation of India Ltd.	4,234.50
10	GAIL (India) Ltd.	4,022.20
	Total (1 to 10)	84,756.06
	Net Profit of profit making CPSEs	<b>1,35,048.07</b>

(source: Public Enterprises Survey by Department of Public Enterprises)

## What this “CSR fund for Wild India” can do?

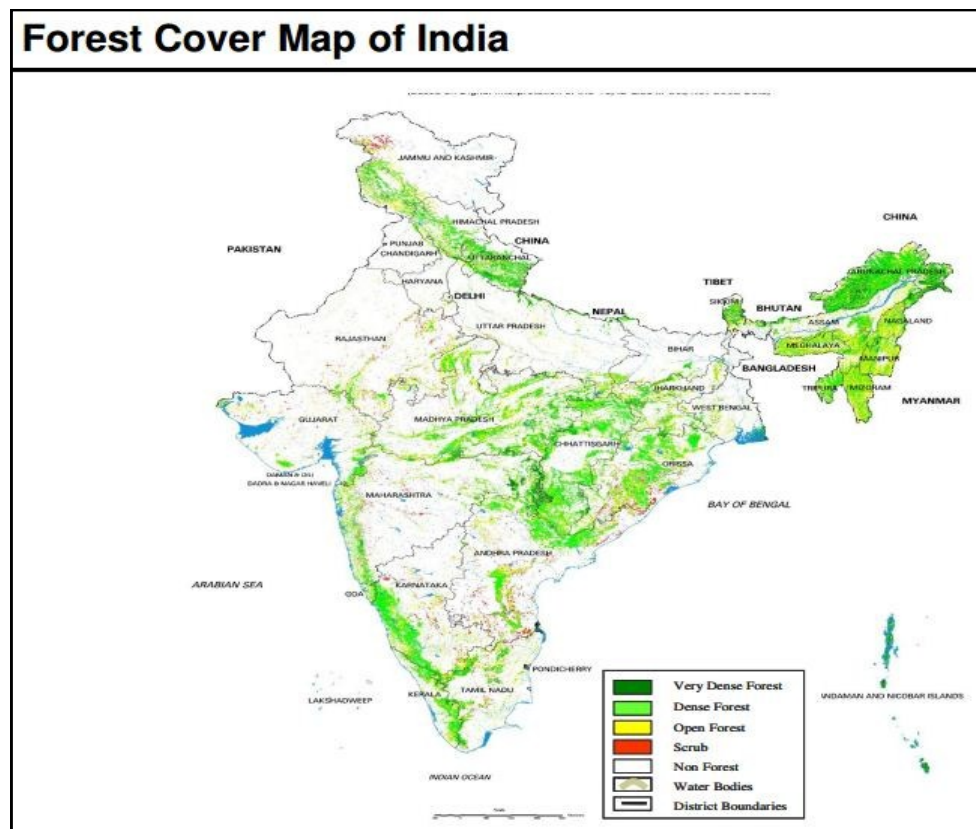
The answer is a lot.

At 10 lakhs per family for relocation from tiger reserves, a total of 27,000 families can be relocated just in one year and would need a small contribution from the next years fund to complete the relocation of all

### Securing wildlife corridors:

Except for a few places like Sanand where the Gujarat Government paid much higher rates to acquire land for corporates, in most of the other places the going rate for land is about 2.5 lakh rupees per hectare. Even if the Government spends double that amount per hectare (to have enough margin of error), Rs.2700.9 crores can buy back 54,019 hectares of land in one year alone. This equals to 540 square kilometres which is about the size of some of our smaller premier national parks like Bandhavgarh Tiger Reserve. Unfortunately the challenges are massive.

According to the Elephant Task Force report, there are a total of 88 elephant corridors \*\*\*that needs to be protected (ref: Annexure IVa and IVb of the ETF report). Of the ten elephant landscapes only 18732.03 sq km. out of 65270.8 ie. only 28% of the elephant landscape falls under P.A.(protected areas).



### Benefits of such land acquisition:

This land acquisition will help in securing the wildlife corridors. This will lead to a healthy gene pool for our animals, especially mega-herbivores like elephants, carnivores like tigers and leopards as well as many other plant, animal and bird species.

The man-animal conflict especially the man-elephant conflict will drastically come down. About 400 people are estimated to be killed every year in human-elephant conflicts and crop depredation by elephants impacts about 0.8 to 1 million hectares and about 500,000 families (source: ETF report, page 71). Due to these conflicts the Government has to often give compensation to people killed by animals, towards crop destroyed, cattle killed by carnivores etc. The problem of people and animals living cheek by jowl in many places will be eliminated.

In many of these cases the Government can also provide employment to the locals by engaging them in planting native species of plants and trees, patrolling, and also in eco-tourism. This will help in getting an easy buy-in from the locals.

A part of this amount can be made as fixed deposit so that the people don't fritter it away as not many people would have seen such large amounts of money at a time.

The purchase of these lands from people, and spending of part of it by them will boost consumption and will lead to a big multiplier effect on the economy.

Securing such large landscapes and even simply leaving it fallow will help in the nature taking it back ie. native vegetation growing back. For heavily degraded lands would ofcourse need assistance in planting native tree, plants, shrub species.

Further more, 228 mha ie. 69% of India's total geographical area (about 328 mha) is under dry lands (arid, semi-arid and dry sub-humid). These lands are heavily populated and an estimated 32% of India's total land is affected by degradation out of which 81.45 mha or 24.8 % of India's total geographical area is undergoing desertification. \*\*\* (Source: PIB MoEF's press release)

The stress due to climate change impacts these areas and the livelihoods of the people. So it is imperative that this desertification has to be reversed not only from a climate change perspective but also to alleviate the poverty of people living in these areas. With poverty comes loss of dignity. If we can't alleviate the poverty of people then India's dreams of economic and overall progress will have to be trashed.

With increase in green areas, there would be more of carbon sequestration and will also help in increased rainfalls. India would be at the forefront of fighting climate change and this may help in reversing some of the climate change related effects.

### **Modalities of this Fund:**

The Government simply needs to create a specific fund and then issue a G.O. to ask all the CPSEs to mandatorily provide the CSR budget to that fund. Private companies who desire to contribute should also be allowed to contribute to this fund, the way companies can contribute to the PM's Relief Fund or the relief funds of various Chief Ministers during flood or other natural calamities.

Once such a fund is created, it would also be easier for the private sector corporates to voluntarily contribute their CSR quota either in part or in full.

The Government can also allow private citizens of India to contribute to this fund and get tax benefits as they do when they contribute to the PM's relief fund.

As in everything in life, there would be people who would resent this good move and would eye this fund. So there would be many who would ask why this fund is only used for wildlife. Are there not any other worthy cause in India? To all those people we need to explain that a country like India with a majority of people depending upon agriculture, with many people

remaining below poverty line, with a wide coastal belt which can get inundated due to climate change induced rise in sea levels climate change can hurt us a lot and has infact started hurting us as can be seen through frequent calamities like landslides in Uttarakhand in 2013 and flooding in Srinagar etc.

The present NDA Government had promised that they will bring about big changes. This is their chance to create a lasting and beneficial change by accepting and implementing this idea to create a Green India.

#### References:

\*Companies Act 2013: <http://www.mca.gov.in/Ministry/pdf/CompaniesAct2013.pdf>

\*\* Public Enterprises survey 2012-2013 : [http://dpe.nic.in/sites/upload\\_files/dpe/files/survey1213/survey01/Overview.pdf#Aggregate Profit and Loss](http://dpe.nic.in/sites/upload_files/dpe/files/survey1213/survey01/Overview.pdf#Aggregate Profit and Loss)

\*\*\* Elephant Corridors: Elephant Task Force Report Annexure IVa and IVb

\*\*\*Desertification: PIB <http://pib.nic.in/newsite/erelease.aspx?relid=73081>

---

## **Conservation News**

### **Ministry of Environment, Forests & Climate Change constitutes High Level Committee to review acts administered by the Ministry**

A High Level Committee (HLC) has been constituted by Ministry of Environment, Forests & Climate Change to review the following Acts administered by the Ministry of Environment, Forests & Climate Change.

- (i) Environment (Protection) Act, 1986
- (ii) Forest (Conservation) Act, 1980
- (iii) Wildlife (Protection) Act, 1972
- (iv) The Water (Prevention and Control of Pollution) Act, 1974
- (v) The Air (Prevention and Control of Pollution) Act, 1981

The committee would be chaired by Shri. T.S.R. Subramanian. The other members of the committee are Shri Viswanath Anand, Justice (retd.) A.K. Srivastav and Shri K. N. Bhat.

The High Level committee has the following terms of reference:-

- (i) To assess the status of implementation of each of the above Acts vis-a-vis the objectives;
- (ii) To examine and take into account various court orders and judicial pronouncements relating to these Acts;
- (iii) To recommend specific amendments needed in each of these Acts so as to bring them in line with current requirements to meet objectives; and
- (iv) To draft proposed amendments in each of the above Acts to give effect to the proposed recommendations.

In line with the latest trend of this Government in filling committees with people from Gujarat, Shri Hardik Shah, Member Secretary Gujarat State Pollution Control Board is one of the two secretaries to the committee along with Shri Bishwanath Sinha, Joint Secretary MoEF.

Notwithstanding the afore-mentioned terms of reference of the committee, it is not clear as to what triggered this review. Earlier this year, the new Government at the centre had announced that all projects within an aerial distance of 100kms from the border will not require permission from MoEF and delegated it down to the state. Massive projects like the Sardar Patel statue have gone ahead without the mandatory EIA (Environment Impact Assessment). So there have been a few murmurs and doubts about this move being designed to dilute the acts in the name of bringing those “in line with current requirements to meet objectives”.

The ministry has invited Comments/suggestions/views on these. Please send us your comments and suggestions so that we can consolidate and send it to MoEF in the next couple of days as the last date for submission to MoEF is 29th Sept, 2014.

---

### **Climate Change: Srinagar Flooding:**

It's been a year after the devastation in Uttarakhand due to landslides and flooding where thousands of people perished. After the initial round the clock coverage of the crisis focusing on the evacuation of pilgrims, the tragedy was quickly forgotten. However, another Himalayan tragedy has hit us in form of unprecedented flooding in Srinagar.



## **Conservation News**

This year there were unabated rains from September 2<sup>nd</sup>. However the total amount of rainfall on September 5<sup>th</sup> was 49mm which as opposed to an average of about half a mm of normal rainfall. Expectedly people were marooned in the rising waters. There have been estimations of several hundred deaths and about two and half million people affected by this tragedy.

The situations in both the places is similar as people have moved on taken over the flood plains of the rivers. In earlier days people used to stay on hill tops despite the difficulty of climbing down to fetch water. They understood that these hill streams can suddenly rise. Unfortunately today we disrespect nature and arrogantly believe that we can do anything and get away with it. In the name of development, today people construct houses and other buildings in the flood plains and there is no law or wisdom to prevent them from this disastrous undertakings.

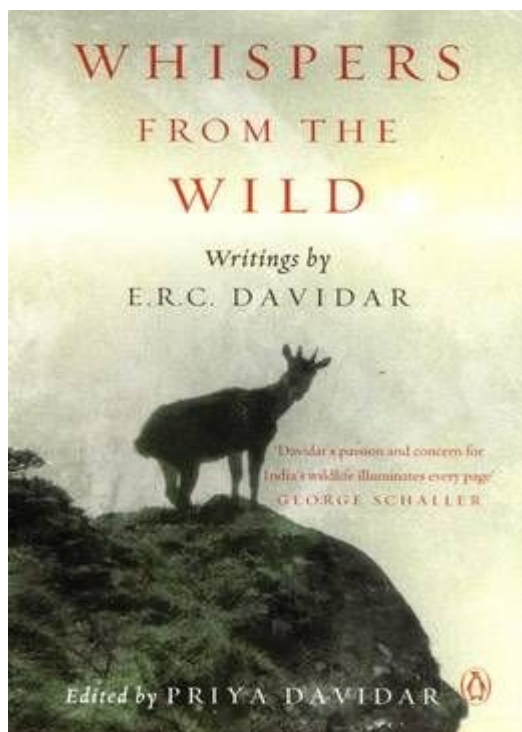
There is huge impace of this flooding in Sringar and the Government there virtually came to a stand still with the Chief Minister saying that he has no Government left. Initial estimates by ASSOCHAM, an industry association, suggests that this has caused about 1000 crores of rupees loss to the apple growers. Kashmir, one of the most beautiful states of our country, has been boiling for sometime due to terrorism, ethnic cleansing of Pandits and general disenchantment towards the Government. With rising poverty levels joining terrorists was also a lucrative proposition for some. This massive flooding, which is the biggest in the last six decades will further contribute to internal strife. No country can prosper when there is no peace. So it is imperative that the Government wakes up to the impact of climate change and start taking urgent steps.

---

## Book Review -

### Whispers from the Wild - Writings by E.R.C. Davidar

The name of E.R.C. Davidar is familiar with people who have read his reports in the BNHS journals. He had earlier written a beautiful book titled “Cheetal Walk” describing his tales from Nilgiris. Unfortunately it had gone out of print. Fortunately, his daughter Priya Davidar decided to bring out an edited version of E.R.C. Davidar’s writings and this anthology is titled “**Whispers from the Wild**”.



This is not just a biography of an avid naturalist, or tales of adventure of an early settler in the blue mountains, when it still was wild enough. This book also documents the ecological changes in the Nilgiri hills, the socio-economic changes due to dam building and other “modernisation” activities on its people and the consequent impact on wildlife. That is an invaluable record, if we care to learn from history.

Like many other early settlers he too was a shikari. However, he was a man of conscience and unlike many others never took to commercial shikar. He could have easily made money by killing tuskers entering his fields and legally selling the tusks or legally bring in hunting parties to make money, especially in dollars which was in short supply those days.

Instead of hunting and making money, he went ahead to make his place a haven for animals. It was interesting to hear about his efforts to discourage local shikaris from bringing hunters close to his jungle abode. “*At Cheetal Walk, we not only provided them a safe haven but took whatever steps possible through the NWEA and other fora to protect them. We dug pools in the stream bed during summer for thirsty elephants. We also put out salt and established salt licks which became popular with elephants.... The elephants repaid us in their own way by giving us the pleasure of their company and acting as watchmen.*” (Page 131) He later became the president of the Nilgiri Game Association the predecessor of the Nilgiri Wildlife and Environment Association (NWEA).

The author also writes about his views on various wildlife species based on his encounters or surveys which he did in his later years. His views on species like wild boar, which are detested for crop depredations leading to clamor for official “cull” orders helps understand how dangerous these killings can be on the species. “*Wild boar populations are not stable. They seem to suffer from widely fluctuating numbers. There are years of boar drought followed by years of plenty when you see a pig in every bush. Disease could be the reason for this rise and fall. An animal that is subject to fluctuating fortunes in its status, deserves careful management, particularly since it is one of the principal prey species of the large carnivores*”. Page 155

The author also writes about his views on various wildlife species based on his encounters or surveys which he did in his later years. His views on species like wild boar, which are detested for crop depredations leading to clamor for official “cull” orders helps understand how dangerous these killings can be on the species. “*Wild boar populations are not stable. They seem to suffer from widely fluctuating numbers. There are years of boar drought followed by years of plenty when you see a pig in every bush. Disease could be the reason for this rise and fall. An animal that is subject to fluctuating fortunes in its status, deserves careful management, particularly since it is one of the principal prey species of the large carnivores*”. Page 155

Folks often believe and call animals blood-thirsty, which he rightly refutes by saying “*uncalled-for aggression and bloodshed are considered to be the hallmark of the jungle. Nothing can be farther from the truth. In the jungle intra-specific as well as inter-specific aggression are, as far as possible, avoided through well-regulated postures and gestures. ‘Side presentation’ is one such. A would-be aggression is put off on seeing the larger outline of its opponent. Some animals hunch, some bristle, to exaggerate their outlines*”. However, despite his well learned jungle lore, he made a mistake by ignoring a gaur bull and trying to move fast in the direction of the jungle sounds, probably of fighting animals, and was gored



by the bull gaur. He was fortunate to survive the massive assault and could recover, albeit with a damage to his spine. That account should be read by today's jeep riding photographers, researchers and conservationists who call themselves "experts".

His experiments in creating a contraption to imitate the call of the tiger is very interesting and speaks of a inquisitive mind and he being a keen student of jungle lore. He mentions that he envied Jim Corbett's ability to call tigers at will, through sheer vocal effort. Instead of burning in envy due to his limitations, he kept looking for solutions. He spotted a little tribal boy in a village fair using a small contraption made by a peacock feather attached to an earthen pot covered with goat hide on one end and an opening at the other to imitate the tigers call and then quickly created a similar contraption to successful test it on a wild tiger. His book is filled of many such interesting tales which not only throws light on this remarkable man but also on a bygone era.

This book "**Whispers from the Wild**" published by Penguin Books has 345 pages and is priced at Rs. 399/-. I think this is a very good book not only for naturalists, researchers, preservationists and wildlife enthusiasts but also will make an ideal gift to youngsters to help stimulate the love for the wild.

---

## Equipment Discussions -

### EOS 7D Mark II announced by Canon

Canon has announced the new EOS 7D Mark II camera as the replacement to the popular EOS 7D.



### Salient Features of EOS 7D II

Resolution: 20.2 MP CMOS (APS-C ie. 1.6 crop)

Frame rate: 10fps

Autofocus:

- 65 point all cross type AF (first camera to have it) with EV-3 sensitivity at centre point
- AF in Video: Dual Pixel AF for video shooting.
- Enhanced version of Canon's EOS iTR (Intelligent Tracking and Recognition) AF to detect subjects based on face and colour

Processor: Dual DIGIC 6 image processors

ISO range: 100-16000 expandable upto 51,600

Shutter life: 200,000

CF and SD dual memory card slots.

GPS with inbuilt digital compass.

Improved weather resistance.

Multiple exposure mode

Integrated speedlight transmitter

Exposure compensation +/- 5 stops.

USB 3.0 high speed tethering and photos and movie transfer.

### Video Features:

- 1080p with upto 60fps.
- Can record to external recorders through mini HDMI port (uncompressed YCbCr 8 bit, 4:2:2 with sound)
- Headphone jack to monitor audio
- Ability to adjust audio silently during recording.

Pricing: 1799 USD, available in November

### Full Press release of Canon USA

New EOS 7D Mark II Camera Provides Captivating Creative Power at an Affordable Price

**MELVILLE, N.Y., September 15, 2014** - Canon U.S.A., Inc., a leader in digital imaging solutions, is proud to introduce the EOS 7D Mark II Digital SLR camera, incorporating professional features and quality in an affordable DSLR. Building upon the proven success of the EOS 7D camera, this new EOS model features a range of "EOS firsts" such as Dual DIGIC 6 Image Processors for superb image quality and rapid burst shooting up to 10 frames per second (fps), as well as Canon's first

65-Point\* All Cross Type autofocus (AF) system for compositional freedom and accurate, spot-on fast focus. Great for shooting indoor activities such as sporting events, concerts, or weddings, the camera's impressive low-light shooting capabilities along with its up-to-10 fps high-speed shooting can capture a fast-break basketball dunk, a band's encore performance, a bird in flight or wildlife in exceptional quality. In addition, the EOS 7D Mark II is the second EOS DSLR camera to incorporate Canon's innovative Dual Pixel CMOS AF system for rapid and precise focusing of video as well as still images.

"With more processing power than any other EOS camera available today, the highly anticipated EOS 7D Mark II camera has everything serious photographers have come to expect from Canon's DSLRs and more," said Yuichi Ishizuka, president and COO, Canon U.S.A., Inc. "And, recognizing that for some, creative expression may expand beyond still photography, we continue to support these creative passions by offering new and innovative Full HD video capabilities, such as second generation Dual Pixel CMOS AF technology in the EOS 7D Mark II camera as well."

## Outstanding Performance



Within the camera's durable magnesium alloy body resides a newly developed 20.2 megapixel APS-C Canon CMOS sensor and Dual DIGIC 6 Image Processors, safeguarded by enhanced dust and weather resistance to protect the camera. Ideal for shooting in challenging lighting conditions ranging from indoor sports to dimly lit weddings, the camera features a standard ISO range of 100-16000 for both still and video (expandable to ISO 51,600). A new 65-point\* All Cross-Type AF system with EV -3 sensitivity at the center point helps deliver sharp focus for still photos even in extreme low-light conditions on subjects with limited visible detail. The EOS 7D Mark II camera also features an enhanced version of Canon's EOS iTR (Intelligent Tracking and Recognition) AF, originally introduced with the EOS-1D X DSLR camera, enabling the camera to recognize subjects based on face and color detection utilizing the new AE system, and can track subjects using all 65 AF points.

The camera's improved EOS Scene Detection system features a new 150,000-pixel RGB+IR 252-zone metering sensor for enhanced precision. The wide-area 65-point AF array combined with EOS iTR and adjustable high-speed continuous burst shooting up to 10 fps enables the easy tracking and capturing of fast moving subjects virtually anywhere in the frame such as birds in flight or running backs eluding a tackle. A new and innovative AF Area Selection Lever nestled around the multi-controller on the back of the camera makes it easier than ever for photographers to switch between the seven supplied AF Point Selection modes without removing their eye from the viewfinder.

At 10 fps, the camera's buffer capacity can consecutively capture up to 31 RAW images or 1,090 Large Fine JPEGs. Built to last, the camera also features a shutter durability rating up to 200,000 cycles, approximately thirty three percent more

than the original EOS 7D camera. A newly developed mirror mechanism uses motorized control to help reduce impact and enhance camera performance during high-speed continuous shooting. In addition to adjustable high- and low-speed continuous shooting modes, single-frame shooting and two self-timer settings, the EOS 7D Mark II camera also features silent drive modes for single frame and continuous shooting. The silent settings support discreet camera operation in quiet locations.

The EOS 7D Mark II camera's advanced AE system can detect and compensate for flickering light sources such as sodium vapor lamps that are often used in gymnasiums and indoor swimming pools. When enabled, this system automatically adjusts shutter release timing to help reduce disparities in exposure and color especially during continuous shooting.

## Innovative AF Technology

The EOS 7D Mark II camera features the next generation of Canon's exclusive Dual Pixel CMOS AF (DAF) technology, originally introduced with the EOS 70D DSLR camera. New DAF features include user-selectable adjustments for Movie Servo AF Speed and Movie Servo AF Tracking Sensitivity. Additionally, overall focusing speed, face detection performance, and performance in low light and with low-contrast subjects have been improved over previous Canon models. Dual Pixel CMOS AF employs proprietary Canon sensor technology in which effective pixels are able to perform both imaging and phase-detection focus measurement simultaneously to achieve dramatically improved AF performance in both video and Live View still imaging modes.

With Canon's Dual Pixel CMOS AF system and customizable Movie Servo AF, the camera provides continuous phase-detection AF during video recording for quick and accurate focus tracking of moving subjects over approximately eighty of the image area measured horizontally and vertically. DAF focusing modes include Face Detection with Tracking, FlexiZone Multi with 31 AF zones, and FlexiZone Single that allows users to position a focusing frame on the camera's LCD screen. Canon's DAF supports over 100 models of Canon EF lenses (including many earlier models), providing a wide array of options for photographers to explore.

## Expanding Creativity

The EOS 7D Mark II Digital SLR camera provides a wealth of creative controls building on the features and functions of the EOS 5D Mark III and EOS-1D X professional digital cameras. The new camera's AI Servo AF III autofocus algorithm is similar to that of the EOS-1D X camera in that tracking parameters (tracking sensitivity, acceleration/deceleration tracking, and AF point auto switching) can be easily customized for specific shooting situations, using the same type of AF Configuration Menu. This capability makes it easy for EOS 7D Mark II camera users to match AI Servo AF settings when used together with EOS-1D X and EOS 5D Mark III cameras, while also providing a high level of performance at an affordable price point.

The EOS 7D Mark II camera also offers the same level of High Dynamic Range (HDR) and Multiple Exposure (ME) functionality that was originally featured in the EOS 5D Mark III camera. The HDR mode includes five HDR shooting functions and allows users to save all source images in addition to the composited HDR image. Similarly, Multiple Exposure mode provides four compositing methods and also allows users to save individual source images.

Photographers and cinematographers will appreciate improved custom controls including a built-in intervalometer and bulb timer, also EOS DSLR firsts, to enable the capture of time-lapse images and long-exposure images. These features are ideal for recording fireworks, star trails, sunrises and more.

In addition to optional settings for Peripheral Illumination Correction and Chromatic Aberration Correction, found in other current high-end EOS models, the EOS 7D Mark II camera, for the first time, adds Distortion Correction that operates with most EF and EF-S lenses to improve image quality even further while recording video and in-camera JPEGs. The My Menu feature has also been improved with the ability to store more user-selected settings in five additional tabs.

A new and improved Intelligent Viewfinder provides approximately one hundred percent field of view, while adding the ability to superimpose a customizable selection of camera settings data such as dual-mode electronic level display, grid, exposure mode, white balance mode and AF mode. A bright, three-inch Clear View II LCD monitor (approximately 1,040,000 dots) on the back of the camera displays information and menus clearly even in bright sunlight. The EOS 7D Mark II camera is compatible with interchangeable focusing screens including the standard Eh-A as well as the optional Eh-S Super Preci-

## **Equipment Discussions -**

sion Matte for use during manual focusing with large aperture lenses.

A built-in GPSiv Receiver provides a digital compass and can record location information including longitude, latitude, elevation, camera direction and universal coordinated time (UTC) as EXIF data for geotagging both images and movie files in real time. The built-in pop-up flash is convenient for many applications and can also act as an optical controller with compatible off-camera EX-series Speedlites for enhanced pro-quality lighting effects.

The EOS 7D Mark II camera features dual card slots for SD/SDHC/SDXC and CF memory cards, including Ultra High Speed (UHS-1) SD cards. Data transfer speeds from the camera to a personal computer are enhanced with the addition of a SuperSpeed USB 3.0 port.

### **Stunning Movie Capability**

The EOS 7D Mark II camera offers users the ability to shoot in 1080p Full HD or 720p HD video up to 60p enabling slow-motion capture at full resolution in either ALL-I or IPB codecs with optional embedded time code, exceeding the specifications of other current EOS cameras. Users can also choose between .MOV and .MP4 recording formats for maximum flexibility. The EOS 7D Mark II camera's mini HDMI port can be used to record uncompressed Full HD video to external recorders.

Canon's Stepping Motor (STM) lenses, such as the EF-S 18-135mm f/3.5-5.6 IS STM lens, significantly reduce focus motor noise, letting the EOS 7D Mark II camera's built-in microphone capture clear audio of the scene being shot without picking up unwanted noise from the lens. The EOS 7 D Mark II camera also features a stereo microphone port and outputs stereo audio via the camera's mini-HDMI port. The EOS 7D Mark II Digital SLR camera is equipped with a headphone jack for real-time audio monitoring, as well as a silent control feature that allows users to adjust audio levels during recordings. Other built-in ports include a PC socket for external flash units and an N3 socket for dedicated Canon wired remote control accessories. A cable protector is provided to maximize safety when using the USB 3.0 and mini-HDMI ports.

### **Availability**

The EOS 7D Mark II Digital SLR camera is scheduled to be available through authorized Canon dealers in November 2014 for an estimated retail price of \$1,799.00 for the body only and \$2,149.00 bundled with an EF-S 18-135mm f/3.5-5.6 IS STM lens. It will utilize a new LP-E6N lithium ion battery pack with increased storage capacity. The LP-E6N is fully compatible with the LC-E6 battery charger, which will be supplied as a standard item in all EOS 7D Mark II body only and zoom lens kits. Also scheduled to be available are the new optional Battery Grip BG-E16 and optional Wireless File Transmitter WFT-E7A Version 2, with shipping dates and estimated retail pricing to be announced at a later date. Both the EOS 7D Mark II camera and Battery Grip BG-E16 are backwards-compatible to the current LP-E6 lithium ion battery pack. For more information about the Canon EOS 7D Mark II Digital SLR camera, the full list of product specifications and compatible lenses, visit [www.usa.canon.com/eos](http://www.usa.canon.com/eos). standard even in the cinema world.

---



## Equipment Discussions -

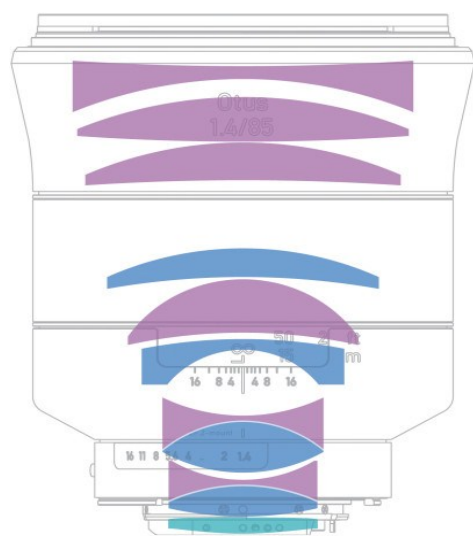
### Zeiss adds 85mm f1.4 lens to Otus lineup

After the rave reviews the Otus 55mm received from the photography and filmmaker community, it was well known that Zeiss will soon add to the Otus range. Zeiss had named this series of lenses as Otus, which is the scientific name of a Genus of Scops Owls, due to the low light ability of these lenses. So the new Otus 85mm gets the same aperture of 1.4 which gives the ability to shoot in low light with a low ISO.

According to Zeiss the Otus 85mm f/1.4 Apo Planar T\* ZE lens is versatile and excels in studio work as well as for fashion, advertising, product and architectural photography. This lens boasts of unusually high contrast, unusually high depth of field, impressive three-dimensional effects and sensational quality.



This lens covers full frame 35mm cameras and hence will not vignette if used with Canon 5D Mark III, Canon 1D X, Canon 1DC etc and has a minimum aperture of f16.



This lens has 11 elements in 9 groups and has 9 round diaphragm blades. One of the lens elements has an aspheric optical surface and six are made of special glass. The optical design is based on the Planar. Because the Otus 1.4/85 is an apochromatic lens, chromatic diagonal aberrations (longitudinal chromatic aberrations) are corrected with the help of lens elements made of special glass with anomalous partial dispersion. As a result, there is practically no perceptible color fringing on contrast-rich edges both in front of and behind the focal plane. Bright-dark transitions in the image, and in particular highlights, are rendered free of color artifacts. Also, the variable air spaces between certain lens groups ("floating elements design") create a consistently high imaging performance across the entire focusing range from 0.8 m to infinity.

The Otus 85mm f1.4 lens has internal focusing, so you can use circular polarisers. The focus barrel rotates 261 degrees so is nice for filming. This lens focuses as close as 80cm or 2.62 inch.

The Zeiss Otus 55mmf1.4 was designed for 77mm filters where as the Otus 85mm f1.4 takes 86mm filters. Zeiss is designing matching T\* UV and POL fil-

<span style="color: blue;">■</span>	Lens with aspheric surface
<span style="color: purple;">■</span>	Lens made of special glass with anomalous partial dispersion



ters with a diameter of 86 mm.

Dimensions: 3.98x4.88 inch

As expected the all metal construction is heavy and the Otus 85mm f1.4 weighs 1.2 kg



The ZEISS Otus 1.4/85 comes with lens hood, user manual, test certificate and lens caps.

The Otus 1.4/85 will be available worldwide with the F-mount (ZF.2) or EF-mount (ZE) from mid-September. The expected recommended retail price is €3,360.50\* or US\$ 4,490\* (excl. VAT).

## Equipment Discussions -

### Canon launches 400f4 DO IS II and another two lenses

Canon today has announced three new lenses Canon 400mm f4 DO IS II USM, EF 24-105 f3.5-5.6 IS STM lens, EF-s 24mm f2.8 STM

For a long time the Canon 400mm f4 DO IS lens was a non-L series lens that was a lone ranger for a long time. Canon later added to the DO lens series albeit in the lower focal length end. Canon has now upgraded the Canon 400mm DO lens by introducing the 400mm f4 DO IS II USM lens. This lens weighs only 4.6 pounds and would be available in November at a cost of 6899 usd.

The 24-105 f4 L IS USM lens is a work horse lens for many Canon photographers as well as videographers. Today Canon has announced a 24-105 lens in using its new stepper motor technology which helps in filming. Unfortunately this lens is of variable aperture ie. its widest lens opening varying from f3.5 to f5.6 depending upon focal length. Nevertheless one can now use this lens to smoothly full focus across the zoom range, especially with the new Dual pixel AF. This lens would cost 600 usd and will be available in December.

The EF-S 40mm f2.8 STM lens, branded as the pancake lens would be of help to photographers or videographers who want to be discreet and still be effective in their image making in public places. This lens would cost about 150 usd and will be available in November.

**Sabyasachi**



### Canon PRESS RELEASE

### Canon U.S.A. Celebrates 75 Years Of Optics Heritage With The Addition Of Three New Lenses

New Lenses Enable Photographers of All Levels to Create Stunning Images

**MELVILLE, N.Y., September 15, 2014** - Following on the heels of its milestone of 100 million EF lenses produced worldwide\*, Canon U.S.A. Inc., a leader in digital imaging solutions, is excited to announce three new lenses adding to its rich history of developing and delivering outstanding optics to all types of photographers, cinematographers, online content creators and image makers from budding amateurs to the most seasoned professionals. The three new lenses include two EF series lenses - the EF 400mm f/4 DO IS II USM super telephoto lens and the EF 24-105mm f/3.5-5.6 IS STM

standard zoom lens, as well as one EF-S series lens - the EF-S 24mm f/2.8 STM wide-angle pancake lens. These new lenses will also be the latest addition to Canon's GlassFirst.com online resource, helping image makers explore the Company's vast EF lens portfolio.

"Canon's heritage is rich with over 75 years of optical innovation. Our engineers are dedicated to delivering high-quality optics for everyone from the amateur photographer to directors of photography on Hollywood movie sets," said Yuichi Ishizuka, President and COO, Canon U.S.A., Inc. "And having reached a milestone of 100 million lenses produced earlier



this year, Canon launched in celebration its 'Glass First' campaign to assist image makers in realizing the artistic potential offered by our various lenses. These new lenses will fit in well with the ever growing family of Canon optics."

### **EF 400mm f/4 DO IS II USM - The Portable Super Telephoto Lens**

Super telephoto lenses are essential whether on a safari or the sidelines to bring the image in tight on a subject, but they often are not the lightest lenses to carry around. Canon's new compact and lightweight EF 400mm f/4 DO IS II USM super telephoto lens will help lighten the load of professional and advanced amateur photographers. At only 4.6 lbs., it is roughly half the weight of the EF 400mm f/2.8L IS II USM lens. The new EF 400mm f/4 DO IS II USM lens features newly developed gapless dual-layered diffractive optical (DO) elements that help improve optical performance while maintaining virtually the same size and weight as its predecessor. The DO element in the new lens is optimally positioned deeper within the optical formula than in the original EF 400mm DO lens to help reduce flare around backlit subjects. Other optical improvements include the use of a large-diameter ground and polished aspherical element and a UD glass element that work together with the DO elements for thorough correction of spherical, chromatic and other optical aberrations. Canon's original SWC (Sub Wavelength Structure) lens coating is also used internally to help improve resistance to flare. Fluorine coating is applied to the front and rear lens elements to repel dust and make lens cleaning easy. A nine blade curved diaphragm is also incorporated to help produce smooth, natural-looking bokeh in areas outside the depth of field surrounding the main subject.

The new EF 400mm f/4 DO IS II USM lens features Canon's Optical Image Stabilization with up to four shutter speed steps of correction\*\*. In addition there are three IS modes - standard, panning and during exposure only - that help to provide superb results in a variety of shooting situations. For greater convenience, the Image Stabilizer does not have to be disabled when shooting with a tripod. Four programmable buttons on the front of the lens allow photographers to customize lens and camera operation to fit their unique shooting style, or simply pause autofocus (AF) adjustment at any point to hold focus on a subject in a busy scene. Even in AF mode, full-time manual focus can be employed at any time. The lens also features a Power Focus mode for smooth focus "pulls" ideal for filmmaking. For those mobile shooters and

documentarians truly "on-the-go", the lens is also highly resistant to dust and water for durability and reliability when shooting in even the harshest conditions.

### **EF 24-105mm f/3.5-5.6 IS STM - Smooth Quiet Focus in a Versatile Lens**

The new EF 24-105mm f/3.5-5.6 IS STM lens is the first EF-series zoom lens for full-frame sensor cameras to include a lead screwtype stepping motor (STM) that provides virtually silent AF while shooting video. The 24-105mm is one of the most versatile focal range options in the EF lineup as it can be used as a wide-angle lens while out on the town as well as a portrait-length zoom when trying to get closer to your subjects.

The Optical Image Stabilizer provides up to four shutter speed steps of correction,\*\* while two aspheric lenses plus a UD lens combine to provide high-quality results for both still images and video. New to the EF 24-105mm f/3.5-5.6 IS STM lens is a seven group zoom optical formula that enables a conveniently compact design while maintaining high-quality optical performance. The lens' lightweight inner focusing system, high-speed CPU, and improved AF algorithm enables high-speed AF. In addition, the seven bladed circular aperture combined with the optimized lens placement and coatings delivers beautiful, soft bokeh, and exceptional color balance, while helping to minimize ghosting and flare. The new EF 24-105mm f/3.5-5.6 IS STM lens provides a lighter and more affordable option with STM focus capabilities to Canon's popular EF 24-105mm f/4L IS USM lens.

### **EF-S 24mm f/2.8 STM - The Slim, Compact Lens That Stacks Up to the Competition**

The affordable EF-S 24mm f/2.8 STM lens is the slimmest and lightest Canon EF-S lens ever produced. This compact, lightweight wide-angle "pancake" style lens features STM technology and was developed for photographers and videographers who are aiming to capture bright, clear images with beautiful softly blurred backgrounds at a fixed focal length. The EF-S 24mm f/2.8 STM lens features an aspheric lens element and the optimized lens arrangement and coating helps to minimize ghosting and flare while delivering excellent image quality. The seven bladed aperture delivers beautiful, soft backgrounds, while the Electro-Magnetic Drive aperture mechanism uses a micro-stepping driver control for quieter operation, especially useful when shooting video.



## Equipment Discussions -

### Leica launches Medium Format camera with 4K Video

Leica has made an interesting move with its medium format camera Leica S (Typ 007) by including 4K 24p video shooting capability with it.

The Leica S(Typ 007) comes with a 30x45mm CMOS sensor and shoots 37.5 MP still images along with 4k video.

In another interesting move they have removed the OLPF (Optical Low-pass filter) from the sensor. One won't notice the low frequency pattern artifacts in still images if there are more pixels, which this medium format camera has. However, when shooting video of a scene with fine details and especially panning over it, the sensors normally fail to resolve. So it would be interesting to see the impact of this sensor design without OLPF in this camera.



This camera has ISO settings from ISO 200 to ISO 6400 and ISO 100 is provided as an option.

The camera also shoots 37.5 MP DNG lossless files at 3.5fps for 32 shots before filling up the buffer. The shutter is rated to 150,000 actuations. The camera has one SD card slot and one CF card slot.

It has a big 3.0 inch 921.6k dot LCD monitor.

The 4K video as well as the HD videos can be recorded to an external recorder with 4:2:2 colour using HDMI out. The video files are recorded in Motion JPEG file format. There is an incamera stereo microphone recording at 48kHz at 16bit. A 3.5mm audio jack is incorporated into the camera's design and can be used in combination with the included Audio-Adapter S.

The camera comes with built-in Wi-Fi for connecting to mobiles for remote applications. There is also a GPS module built-in so that you can do geo-tagging.

**Price: 25,400 USD**



## Equipment Discussions -

### Atlas Camera Support Rig

I am doing this short review after using this rig in the field for several months.

#### Background:

I had an urgent feature film shoot where there was lot of walking around shots through narrow staircases. So a steadicam would have been a problem. I saw the details in their site and shot an email to Michael Knowles the owner/inventor (yes the Atlas Camera support rig has got an approve patent).



**Sabyasachi shooting with Atlas Camera Support rig and Canon Cinema C300 camera**

Michael Knowles replied back “I think the learning curve is dependent on you a little bit. I’ve seen some people strap on an Atlas and with in minutes they get the feeling and know how to move with it and then I’ve seen others strap it on and I don’t know if they will ever get super smooth walking shots. I think if you generally are able to get somewhat smooth shots while walking and doing handheld you will generally get even smoother shots walking fast and even running BUT I have to stress, The Atlas is no replacement for a steadicam when it comes to really fast walking or running shots. The Atlas is unique in that it gives the user a smoother handheld feel”.

Having heard this, I ordered the Atlas Camera Support rig as Michael himself is a filmmaker.

#### Idea:

It is a simple idea where a flexible rod flexes a bit and supports the weight of your camera when attached/hung to the rod. So the vertical axis is more or less stable.

#### Details of the Rig:

The rig consists of two sets of rods, a vest to hold the rod in place and a strap to attach your rig to the rod. There is a white rod and a black rod. The white rod is for lower weight and the black for heavier cameras. Each rod comes in two pieces and needs to be screwed in to achieve the complete length. This two piece rod design also helps while traveling.

#### Cons:

1) When I got the rig, I just put the white rod and used a heavier set up to test and pulled it way beyond it can flex. As a result the outer coating of the white rod cracked. However the core remains strong and works. To be fair to the manufacturer, the correct practice of attaching the rig to your Atlas Camera support system is to lift your camera/lens rig and attach it to the rods instead of pulling down the rods to your chest height which I had done to crack the rod. The reason is that the rods are designed to only flex a bit. If it flexes more then the vertical axis would be compromised. Nevertheless a



spare rod would have been good.

2) The vest should have more thick material in the back so that there is more of cushion between the rod and your back. Remember the rod is pulled forward and presses on your back. So more of cushion between the rod and your back will help. In a warm country like India, since most of the time I am wearing a thin T-shirt, the rod presses against my back and it hurts after sometime. In colder conditions or in winter when you are wearing thick layers of clothing, this may not be an issue. It needs just a thick foam insert like the ones in your Kata/Loweepro or other good camera bags.

**Edit on 16.09.2014:** I got a mail from Michael Knowles the manufacturer that he is going to upgrade and provide an additional attachment to the vest to make it more comfortable.

3) On set people who are used to watching the DoP with some massive steadicam rigs often wonder whether this simple rig works well.

### **Pros:**

#### **Portability:**

The atlas rig packs small. So I can place it in my tripod bag or even in my suitcase and carry it while traveling. You don't need to undergo extensive workshops like in Steadicam. Nevertheless any prior experience of handholding/steadicam work helps.

You just attach the rig in minutes and are ready to go.

#### **Cost:**

This is way more cheaper than the easy rig. If it doesn't work for you, then it doesn't hurt either. I have spent tons of more money on rigs and equipment that are no more than paperweight now.

#### **Working in cramped spaces:**

I can easily use a C300 and lens and pan smoothly which I can't do with as well with handheld. There are places where I can't carry my heavy tripod setup. In those places this rig works fine. All you need to see is that you have atleast a feet more space at the top of your head.

This has a smooth floating feeling which would be liked by people today as the current fad is shooting everything handheld. However, this is not a steadicam or a three axis gimbal. So don't expect miracles. Nevertheless the more you practice the better you become.

You can also use it with your shoulder rig. During long takes this will ensure that your rig doesn't dip in front of you and helps remove the jitters.

When used along with a 3 axis gimbal this would work great as it would arrest the movement in the vertical axis and your arms won't be fighting to hold the heavy weight all the time.

Will I recommend it to people? Yes I would, because this is much cheaper than products like the easy rig and is value for money.

## Wilderness Updates -

### **Bhadra -A Wonderland of eternal blue**

**By Shyamala Kumar**

Bhadra, situated 38 km NW of Chikmagalur and 275 km from Bangalore, amidst the western Ghats, in the state of Karnataka. Originally known as Jagara WLS (as declared by the Govt. of Mysore in 1951), comprised an area of only 77sqkm. The area was then extended to surrounding terrain and Bhadra WLS was officially born in 1974. It was later declared a Project Tiger Reserve in 1998, becoming the 25th tiger reserve in the country.



The first successful village relocation program was implemented here.

This began in 1974 and was completed in 2002 during which 26 villages were relocated.

Extending over a total area 500sqkm the Bhadra WLS gets its name from the river Bhadra and its tributaries which flow through it. The river Bhadra originates in Kudremukh in the Western Ghats and together, with its tributaries, flows eastwards along the southern part of the Deccan Plateau. A dam is built across the river at Lakhavalli which forms the Bhadra Reservoir. The reservoir

extends over an area of 2000 sqkm. The reservoir consists of two main areas Muthodi and Lakhavalli. The western part of the sanctuary near Muthodi borders the Bhadra reservoir. It is therefore popularly known by the locals as the Muthodi WLS.

This very river continues through to the city of Bhadravati and then flows onwards to join the Tunga river to become the Tungabhadra river. The Tungabhadra then flows eastwards as the major tributary of the Krishna to finally empty itself in the Bay of Bengal.

The extensive variation in elevation from 600 MSL to 1900 MSL has resulted in great environmental diversity. Forests range from dry deciduous, moist deciduous to semi-evergreen. The sanctuary is surrounded by the slope of steep hills. The highest peak in the sanctuary being Hebbegiri. Many well known falls are also located inside the sanctuary of which the Hebbe falls are well known. Among the trees found here are Teak, White Rosewood, Bamboo, Oak etc. There are 120 plant species to be found here including many medicinal ones like Citronella, Jambli, Jalarin, Indigo, Mangosten, Kino, Treeco etc

It is the home to a wide variety flora and fauna. An estimate of 33 tigers 22 leopards, leopard cat, ruddy mongoose, slender loris, pangolin and elephants. It is the home of the elusive Black Panther which is rarely sighted and equally rarely photographed. The reptiles include vine snake, king cobra, russels viper, bamboo pit viper monitor, gliding lizard and crocodiles. There are also exotic species of butterflies.

The birds include both native and migratory. There are about 250 to 300 known species including, hill myna, great black woodpecker, shama, malabar trogon, malabar whistling thrush, a variety of hornbills etc. The threats are as many as assaults other sanctuaries like, poaching, fishing, timber depredation, forest fires etc.



## Natural History -



**A Shama greets us melodiously at the resort premises.**

**Peaceful coexistence-a snake bird and a grey heron**



**Back waters**



## Natural History -



**Warming up on a frosty morning in may - A lone crocodilian amidst the morning dew**

shyamala kumar

**Quite a large herd with many little ones and one interesting single tusker.**



shyamala kumar



shyamala kumar

**The retreating feline after an interesting interlude**



## Natural History -



**Dusky striped Squirrel - A rare squirrel found only in the Western Ghats**

**A barking deer**



**An Oriental turtle dove**

shyamala kumar

## Natural History -

### **COUNTRY NOTEBOOK: M.Krishnan: NECTAR AND FIGS**

**The Sunday Statesman: 03-Aug-2014 (shared by Shri. Saktipada Panigrahi)**

"THIS summer I found opportunity for observing the flowering of that magnificent and wholly Indian tree, the red silk-cotton (*Salmaalial malabarica*, probably better known to readers by its old name, *Bombax malabaricum*) in several places. And once again I was struck by the peculiarly rich and vivid red of the flowers, so poorly depicted in plates from water colour drawings and colour photographs. I do not know if it is the process, or the that rendering of the red by the printer or the film that is to blame, but the full, opulent crimson of this flower, with the blush of rose madder on it when it is newly opened, and later the imperial tinge of purple is invariably rendered a heavy, dark, purplish red in the plates.

A friend who is fond of Sanskrit classics ( unfortunately I have no Sanskrit) told me of a celebrated passage that refers to the shrill green of parakeets against the background of *Salmaalial* bloom. Parakeets do visit this tree and tear clumsily at the fleshy petals but I wouldn't put them down among the birds that are typically associated with its blooming. Among the regular visitors to the flowers that I noticed were the mynahs (the Common, the Brahminy and the grey-headed Mynah in that order) a few stray Rosy pastors, Bulbuls, Sunbirds and House crows. the birds put their heads right into the open flower to get at the nectar. Squirrels, of course, were very much in evidence, being avid nectar-lickers.

Another tree at which I halted frequently, and whose pendent clusters of white , thick-petalled bloom attracted many birds, was the Southern Mohwa or "Illupai" - *Bassia madhuca longifolia*. The buds are dark with the enclosing rusty-green outer sepals, but the opened flowers hang with the luscious globes of their corollas displayed, each like a miniature, pearly-with electric-light globe, with the style sticking down from the centre like some ornamental appendage. Naturalists and shikaris have often commented on the fondness of jungle animals for these saccharine, rank-scented globes -deer and the sloth bear, in particular, seek out the mohwa to feast on the juicy, fallen flowers, on the ground beneath. incidentally, these fallen globes are sweeter than the ones on the tree, though they are ranker-scented and have a more "fermented" flavour. Experto-crede -I have sampled both.

Strangely enough, I have not come across any mention of the mohwa in bird books as a tree that attracts the avifauna of the neighborhood to it's bloom-a surprising omission, for then it is loud with bulbuls and other small birds. I have known this from childhood, bird only this summer did I not down the commonest visitors to the *Bassia* in bloom - a surprising omission, for then it is loud with bulbuls and other small birds. I have known this from childhood, but only this summer did I note down the commonest visitors to the *Bassia* in bloom. Chief among them are the bulbuls (the Red-vented, Red-whiskered and White-browed Bulbuls), which tear at the flower and carry away pieces of the corolla which they eat, besides drinking the nectar. I also noticed quite a few Common and Brahminy Mynahs, a Magpie-Robin, Ioras, the beautiful Small Minivet, White-headed Babbler, Sunbirds and some Warblers. Some of these, apparently, visit the tree not for the sake of its sickly-sweet flowers, but for the insects these flowers attract. I watched a Small Minivet for nearly half an hour, and though it was hunting all the time among the pendent inflorescences, it did not even peck at the petals.

In Tamil, we have a proverb, "the village that has no cane refinery gets it's sugar from the flowers of the mohwa". I have often suspected this proverb of cryptic satire, but am not sure that it has any such llient venom, for it could be construed literally, too. However that may be it speaks of the sugar-content of the corolla.

I would like to mention another tree at which birds forgather in clamorous numbers during summer. The banyan is in red fruit right at the peak of summer, and noisy mixed parties of parakeets, every kind of Mynah, the Rosy Pastor, Bulbuls, Barbets and crows (both the House Crow and the Jungle Crow) crowd its spreading boughs then.



But at times, I have noticed, the birds visit only one of four or five neighboring trees, though all are in fruit and the figs of that tree are the tastiest - I have observed that such specially favoured trees are often comparatively young (though mature), and that their fruit is larger.



© Dr Kalpa Kakati 2012

**Coppersmith Barbet**

**Image courtesy – Dr. Kalpamoi Kakati**

Quite a lot of insectivorous food must be consumed along with the pulp of these figs, as you will realise if you pick up a fallen fruit and examine it. Whether it is such content or not that is the incentive, it's true that at such favoured banyan the birds feed with unrestrained gusto, even the crows (which are usually content with picking up the fallen fruit from the ground) tugging and pulling at the figs eagerly and tearing them off the twigs.

Recently I saw a Brahminy Mynah bolt a fig in such haste that it almost choked to death and fell from the bough to the ground, its wings thrashing, a visible bulge at its throat. After a frantic minute it managed to gulp down the fruit, and then, to my surprise, it just flew up into the branches above and started pecking and tugging at another ripe fig ! "

-M.Krishnan

This was first published on 11 July 1957 in The Sunday Statesman

## **IndiaWilds App for Android Mobile**

In India most of the internet penetration is happening through mobile phones. And the existing users who have access to desktops and laptops are becoming much more mobile then they used to be a few years ago. So to raise awareness and reach out to more people we need to adapt ourselves and make IndiaWilds easily accessed through a mobile phone using android OS.

Today, I am pleased to announce that we have created a mobile phone app so that people can access IndiaWilds anytime, anywhere without being tied to a computer. No need to type. One can access at the click of a button.

We have developed this app through Business Compass LLC a company based in Randolph, New Jersey, United States so that we create a good app.

Awareness is the first step before a person can become a champion of wildlife. I hope this will help us in reaching out to more people to raise awareness and make a real impact on the conservation landscape. If you have an android device then please download the app from this link:

<https://play.google.com/store/apps/details?id=com.businesscompassllc.indiawilds>

---

## Image of the Month -

The Image of the Month for August 2014 goes to Vipin Sharma's image of a royal bengal tigress nursing her young. I loved the rare and serene moment. Congratulations Vipin!

Details of the image by Vipin Sharma:

A very emotional moment , mother feeding her cub in Ranthambore. A heart warming moment.

A jaws which can rip apart any living body in few second can be so caring for her cubs; can be witnessed here.

At a time mother can be a ferocious predator , a protector for her cubs but for the cubs her arms are the safest place in the world.

Canon 7D , Canon 300mm f/4.0 , 1/3200 , ISO-1600 , f/4.0 , EC = 0.00





## **Wildlife Photography -**

### **Leopard in Kabini by Mrudul Godbole**



### **Indian spotted chevrotain by Roopak Gangadharan**





## Wildlife Photography -

### Elephants in Infrared by Sabyasachi Patra



### Paradise getting lost- Male GIB, Nannaj





## Wildlife Photography -

Thoseghar falls by Jitendra Katre



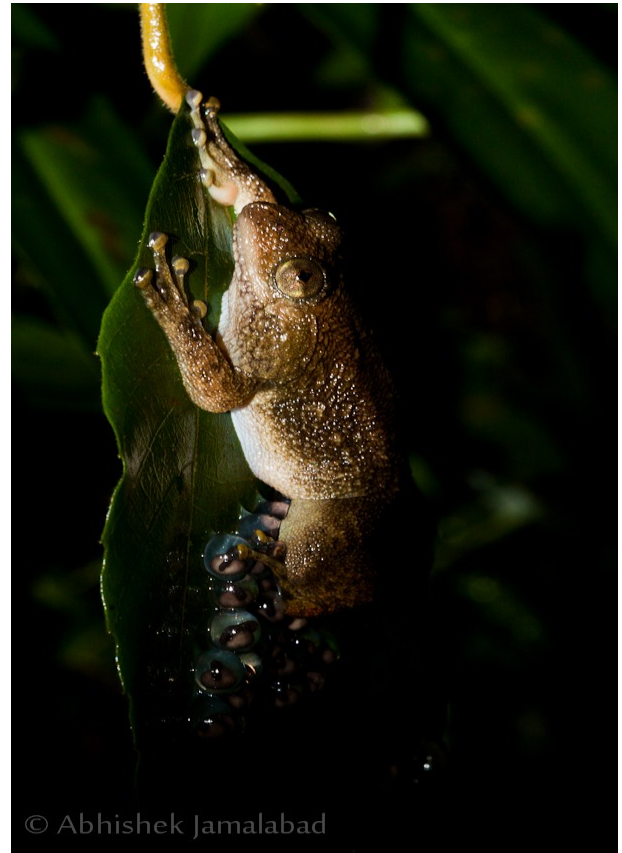
Record image of Royal Bengal Tiger in Sunderbans by Samrat Sarkar





## Wildlife Photography -

### Jog Night Frog by Abhishek Jamalabad



### Malabar Pit Viper - Orange Morph by Bibhav Behera



## Wildlife Photography -

### Fruit piercing Moth Caterpillar by Prajwal Ullal



I look forward to your inputs and support in preserving the last tracts of wilderness and wildlife left in our beautiful country. For other interesting articles and images check - <http://www.indiawilds.com/forums/>

To post in the IndiaWilds forums, you can register free of cost using your Full Name as user id at <http://www.indiawilds.com/forums/register.php>

If you are already a member of IndiaWilds and have forgotten your user id and/or password you can mail to [administrator@indiawilds.com](mailto:administrator@indiawilds.com)

Regards,

**Sabyasachi Patra**

Profile: <http://www.indiawilds.com/about.htm>

Contact: [http://www.indiawilds.com/contact\\_us.php](http://www.indiawilds.com/contact_us.php)

Facebook: <http://www.facebook.com/pages/IndiaWilds/132629240481>

Diary: <http://www.indiawilds.com/diary/>

Equipment reviews: <http://www.indiawilds.com/diary/category/equipment/>

Forums: <http://www.indiawilds.com/forums/index.php>

Channel