

1 Install the IPS on a desktop, laptop, or palmtop PC

Even if you plan to run the V Series Intelligent Programmer Software (IPS) primarily on a palmtop PC, for backup purposes, we recommend installing the IPS on a desktop or laptop PC also. Then, if you're installing the IPS on a palmtop PC as well, follow tasks 2–4. If you don't need to install the IPS on a palmtop PC, skip tasks 2–4.

- Insert the IPS diskette in the PC's appropriate floppy disk drive.
- At the DOS prompt, type the letter corresponding to the PC's floppy disk drive, a colon (:), and INSTALL (for example, **A:INSTALL**). Then, press **Enter**.
- Follow the instructions that appear on the screen.

2 Connect the palmtop PC to a desktop or laptop PC

Before you can install the IPS on a palmtop PC, you need to connect the palmtop PC to the desktop or laptop PC.

Note: Purchase the palmtop cable from the computer vendor where you purchased your palmtop PC.

- Plug the palmtop cable into the side of the palmtop PC as shown in Figure 1.
- Plug the palmtop cable into a COM port on the desktop or laptop PC.

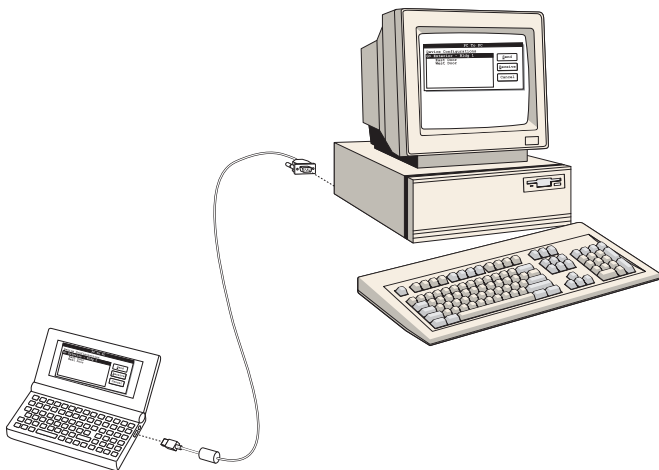


Figure 1—Connecting the palmtop PC to a desktop PC

3 Install the IPS on the palmtop PC

- On the desktop or laptop PC, type **INSTALL** at the program directory DOS prompt (C:\INTPROG>) and press **Enter**.
- Follow the instructions that appear on the screen.
- Restart (reboot) the palmtop PC by pressing **Ctrl** + **Alt** + **Delete** (Delete).

Note: Turning off the palmtop PC and turning it back on does not restart it.

- Disconnect the palmtop PC from the desktop or laptop PC.

4 Set up the HP palmtop PC to work with the IPS

- On the palmtop PC keyboard, press **&... MORE**.
- On the palmtop PC screen, select the **Setup** icon. The main Setup screen appears.
- Press **MENU**.
- Select **Options** (press **Enter**). The Options drop-down menu appears.
- Select **System** (press **Enter**). The System dialog box appears.
- Select **Advanced** (press **A**). The Advanced dialog box appears.
- Press **Tab** until the **DOS** field is highlighted.
- Replace 96 with **340**. This setting increases DOS memory to 340K bytes.
- Select **OK** (press **Enter**). The System dialog box reappears.
- Press **Enter**. The main Setup screen appears.
- Press **MENU**.
- Select **Quit** (press **Q**).

5 Start and log into the IPS

Now you're ready to start and log into the IPS. Follow these steps.

- On the desktop or laptop PC, type **CD, space, INTPROG** at the DOS prompt (C:\>) and press **Enter**.
- Type **INTPROG** at the program directory DOS prompt (C:\INTPROG>) and press **Enter**.

If you're using a desktop or laptop PC, type **INTPROG** at the program directory DOS prompt (C:\INTPROG>) and press **Enter**.

If you're using an HP Palmtop PC, press **&... MORE** to access the More Applications screen. Then, press **Tab** until a box appears around the **IPS** icon and press **Enter**.

The Main menu appears, as shown in Figure 2 below.



Figure 2—The Main menu before logging in

- c Select **F**ile (Press **F**). The File menu appears, as shown in Figure 3.

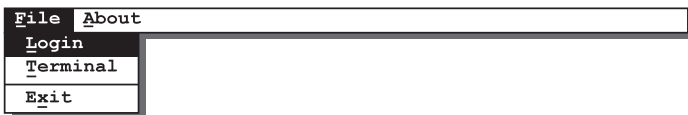


Figure 3—The File menu before logging in

- d Select **L**ogin (Press **L**). The Login dialog box appears, as shown in Figure 4.

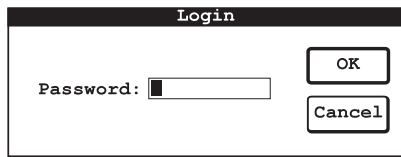


Figure 4—The Login dialog box

- e In the Password field, type the default IPS password—**123456**.
 f Select **O**K (press **Enter**). The Main menu appears, as shown in Figure 5.



Figure 5—The Main menu after logging in

6 Set up the IPS to work with your computer system

You need to set up your computer system to work with the IPS by:

- *Optional:* Defining the printer page size.
- *Optional:* Selecting the printer port.
- Selecting the transfer port.

Defining the printer page size

The printer page size is the size of the printable area on paper in your printer. You can set the page length and the page width for the paper in your printer.

The default page size for printing IPS reports is 55 lines in length and 80 characters in width. This page size is the size generally used for 8.5" × 11" paper (standard letter size).

Selecting the printer port

The printer port is the PC port used for printing IPS reports from the PC. Printer port options are:

- LPT1 and LPT2, possible parallel ports on a desktop PC or laptop PC. The palmtop PC does not have a parallel port.
- COM1 through COM4, possible communication (serial) ports on a PC. The palmtop PC has one communication port—COM1.
- IR, the infrared port on some PCs, which is used to transmit infrared signals to a printer with an infrared receiver. The palmtop PC has an IR port.

Selecting the transfer port

The transfer port is the communication (serial) port used for transferring data between the PC and a V Series Security Device, and between the PC and another PC. The palmtop PC has one transfer port—COM 1.

Selecting the settings

To set up the IPS to work on your computer system, follow these steps.

- a From the Main menu, select **F**ile (press **F**). The File menu appears, as shown in Figure 6.

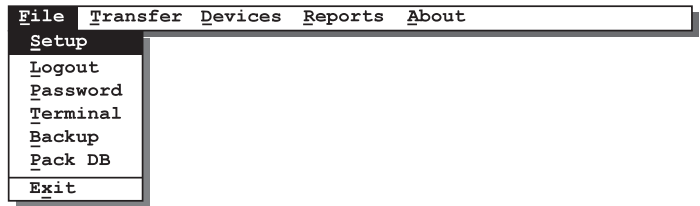


Figure 6—The File menu with the Setup command selected

- b Select **S**etup (press **S**). The Setup dialog box appears, as shown in Figure 7.

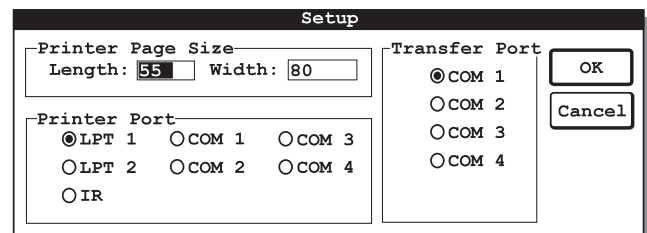


Figure 7—The Setup dialog box with default settings

- c If you want to change the printer page length, perform this step.

*In the **L**ength field, type the maximum number of lines that you want the IPS to print on a page when printing reports. For example, if your printer has legal-size paper and you want to print 72 lines on a page, type **72**.*

- d Press **T**ab.

- e If you want to change the printer page width, perform this step.

*In the **W**idth field, type the maximum number of characters that you want the IPS to print on a line when printing reports. For example, if you want to print 65 characters on a line, type **65**.*

- f If you want to change the printer port used by your PC when printing reports, perform this step. (The printer port options not available for your PC appear grayed.)

*Press **T**ab until the printer port you want is highlighted. Then, press the spacebar so the circle next to the port is filled in.*

- g If you want to change the transfer port used by your PC when it communicates with a V Series Security Device or with another PC, perform this step. (The transfer port options not available for your PC appear grayed.)

*Press **T**ab until the transfer port you want is highlighted. Then, press the spacebar so the circle next to the port is filled in.*

- h To save your changes and return to the Main menu, select **O**K (press **Enter**).

7 Read the IPS user manual

Now you are ready to start using the IPS to manage your V Series system. For instructions, refer to the *V Series Intelligent Programmer Software User Manual*.