

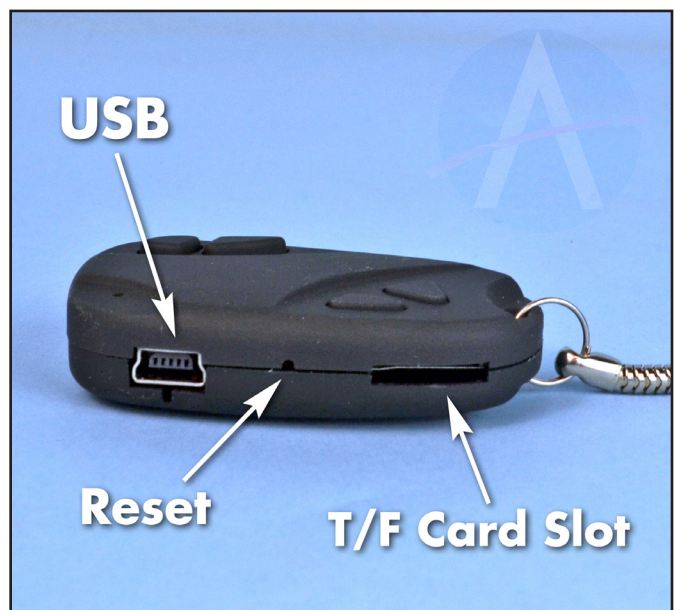
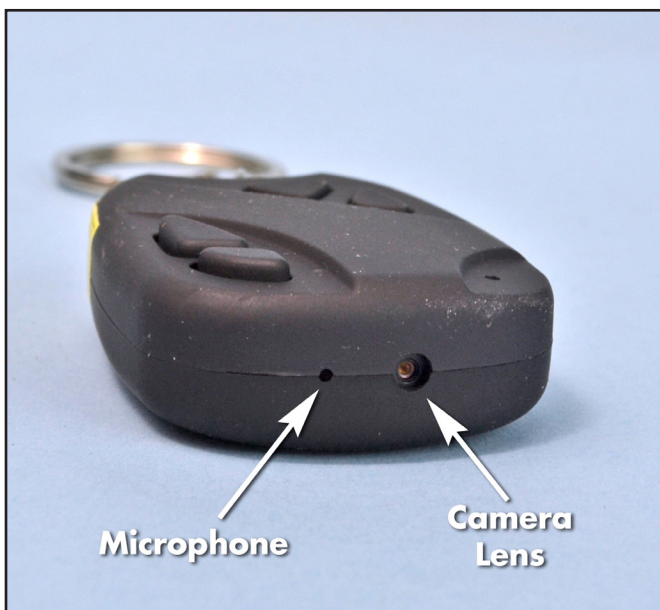
808 Keychain Camera

User Manual

The inexpensive video camera that works great on model rockets!

Features:

- It has a small contour design which easily attaches to the side of a model rocket.
- Saves video files in AVI video format.
- Can record under low illumination conditions.
- Video records at 30 fps and image size of 640X480 pixels
- Supports USB1.1 and USB2.0.
- Supports up to 16GB T-flash cards.
- Build-in lithium battery, which can take a video of one hour, with a standby time up to 120 hours. The battery is 280mha 3.7V
- Made in China



Operating Your 808 Keychain Video Camera

1. Charging the Battery

The battery in the 808 Keychain video camera is a built-in lithium rechargeable battery. You should recharge it before using the camera. The method for charging is:

Connect the 808 Keychain video camera to your computer using the supplied USB cable.

During the charge cycle the yellow light will flash slowly. When it is fully charged, the yellow light will stop flashing and remain steadily illuminated.

Notice: When battery power is too low, the camera will enter into protection mode. In this state, it cannot be turned on. It should be recharged for video operations.

2. Turning on the 808 Keychain video camera

Please confirm the TF (micro SD) card has already been inserted into the product! This camera does not come with a TF card, and it must be supplied by the user of the device. This camera does not support T-flash cards greater than 16GB of storage.



Insert the Micro SD card with the metal contacts facing upward.

Press and hold the “ON/OFF” button for 3 seconds. The yellow indicator light will illuminate, indicating that the camera is now powered on, and is in standby mode.

NOTE: Make sure a T-Flash (Micro SD) card has been inserted before turning on the camera. If a T-Flash card is not installed, the yellow light will begin flashing fast, and the camera will power off automatically after 15 seconds.

3. Making a Video Recording

To Start Recording:

Press and hold the “VIDEO/CAMERA” button for 3 seconds. The yellow indicator light will flash quickly three times, and will then go dark. It is now recording video (it is in stealth mode so other people can’t tell it is recording. Remember, it is a spy camera).

To Stop Recording:

To stop recording, press-and-release the “VIDEO/CAMERA” button. The yellow indicator light will flash briefly and then again become steadily illuminated.

IMPORTANT! Before turning the unit off or restarting the video camera, pause a few seconds to allow the video file to be written to the memory card. Turning on the video camera too soon will create incomplete video files.

The lens is not designed for close-up videos. You’ll need at least 50cm (about 20in) between the lens and the subject for proper focus and to allow sufficient illumination.

4. To Take Still Photos

Taking still photos is easy. When the camera is powered on and is in “standby mode” (indicated by the steady yellow light), simply press-and-release the “VIDEO/CAMERA” button. The yellow indicator light will flash multiple times, which represents a photo shot. A repeated press will result in another photo taken.

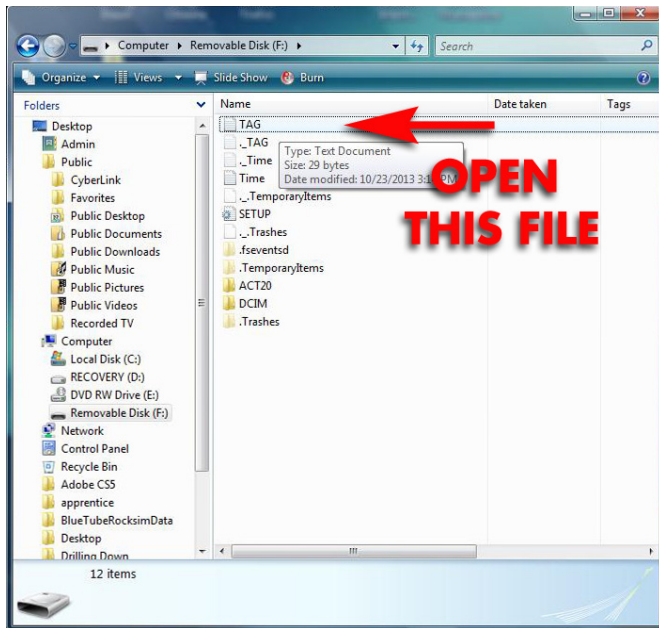
5. Setting the Time Stamp

Note: There is no way to turn off the time-stamp on the video that we are aware of. (The time stamp may reset every time you plug the camera into your computer, so make sure to check it when you are preparing to launch.)

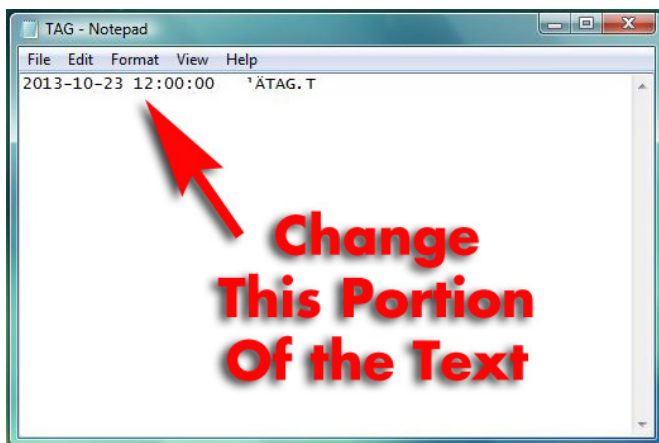
a. Make sure the T/F memory card is inserted into the keychain camera.

b. Connect the 808 Keychain camera to your computer using the USB cable.

c. Open the TAG.txt file with a word processing program. It is located in the root directory of the memory card. This file is generated by the camera on new T-flash cards, so you may need to take a



Open the TAG.txt file to change the time code on the camera.



video or photo with the camera first before you'll see the TAG.txt file.

d. Change the time stamp in this format: YYYY-MM-DD HR:MIN:SEC

For example, October 23, 2013 at 12-noon would be:

2013-10-23 12:00:00

You may want to set the time ahead a minute so that you can have enough time to get the camera turned on and the new time-stamp loaded.

e. Resave the file to the memory card. It should be .txt format.

g. Disconnect the camera from the computer and power it on. Take a short video. Put the camera back into stand-by mode, and then turn it off.

When you load the video onto the computer, it will now have the new time-stamp imprinted on it.

6. Turning Power off

When the camera is in standby mode, hold the "ON/OFF" button, until indicator goes out. Then the camera is turned off.

7. Auto-power off function

The 808 Keychain camera will save video files and turn off automatically under the following conditions:

a. Battery power is low: the camera will disable, the video file will be saved automatically, and then the 808 Keychain camera will power down.

b. When available memory space on the T/F card is insufficient, the indicator light will go out, the video file will be saved, and the camera will power down.

c. When in standby mode, without any operation for 45 seconds, it will be auto-power off.

8. Connecting to your computer

When the 808 Keychain camera is connected to your computer using the USB cord, your computer should recognize it just like a simple USB memory stick. While connected to your computer, the illumination light will be a steady or flashing yellow color (depending on if it needs to charge).

You should see several folders on the "removable drive." The folder called "DCIM" contains the videos and the photos you have taken. Open the folder, and copy the files you wish to view to your computer. It is better to copy the files before trying to play them, as they will play with less choppiness.

Use your computer to delete the video files from the T/F card to free up memory space to take more videos. The camera can also be used as a memory disk to hold and transfer files.

9. Reset

When the camera doesn't seem to work properly, it needs to be reset. Use a stiff rod (a paper clip works well) to press the Reset button. The Reset button is in the hole placed between the USB port and TF card slot.

10. Mounting Options

You can remove the key ring from the device to save weight. Then use strong electrical tape or duct tape wrapped over the 808 keychain camera to hold it onto your model rocket. Be sure not to cover up the two operation buttons near the lens of the device.

On small rockets, mount the camera closer to the front of the rocket to keep the Center-of-Gravity forward of the Center-of-Pressure. On bigger rockets, you can move the camera rearward to get a more unobstructed view of the ground during launch.

11. Other Important Information

Suitable usage: Please follow all applicable state laws. Do not use it illegally.

Moisture Warning: Do not get the 808 keychain video camera wet or use it in high humidity conditions. It is not waterproof and will destroy the device.

Shooting illumination: The 808 Keychain camera works best in sunlight conditions. Do not aim the camera at the sun or other strong light sources, as that will damage the optical sensors in the camera.

Cleaning requirements: Protect the camera and the lens from dust and dirt.

Disposal: Protect the environment, do not to throw the product in with household garbage. It should be disposed of in a manner suitable for electronic products.

Removing the T/F Card: to remove the card, press inward on the edge of the card with your fingernail. It is spring-loaded, and will pop out after you release the pressure.

Fire: In order to avoid a battery explosion, do not throw product into a fire.



Warranty Information

Apogee Components is not the manufacturer of this product. It is made by some unknown company in China. We do not warranty 808 Keychain cameras other than it will work on your bench when you receive it (only if you purchased it yourself, **directly** from Apogee Components.). If your camera does not operate when you receive it, contact the vendor you purchase the camera from. Once the camera has been flown or driven on a vehicle, the warranty is no longer in effect.

