

True FLAT P-CAP LCD Monitor

User Manual

Installation Guide



15" True FLAT P-CAP Touch LCD Monitor

MODEL: KKF1500-PCAP



i-Tech Company LLC

TOLL FREE: (888) 483-2418

EMAIL: info@itechlcd.com

WEB: www.iTechLCD.com

User Manual / Installation Guide

15" True Flat P-CAP Touch Monitor

Warning! It will cause malfunction if the monitor is operating with unspecified power supply unit or incorrect power voltage. Do not exposure this unit in the rain or moisture environment to reduce the risk of fire or electric shock.

Content:

I. FCC Warning Statement.....	1
II. Introduction.....	2
Features.....	2
Unpacking the monitor	3
III. Installation.....	4
I/O placement.....	4
To PC	4
Touch Driver installation	5
MSR installation (optional)	7
Second Display (optional)	8
Control Buttons.....	10
Structure of OSD settings	11
IV. For your safety.....	12
V. Support timing chart:	12
VI. Mechanical Dimension.....	12
VII. Product General Specification	13



I. FCC Warning Statement

WARNING

Note: This equipment has been tested and found to comply with the limits for a Class B digital device, pursuant to Part 15 of FCC Rules. These limits are designed to provide reasonable protection against harmful interference in a residential installation. This equipment generates, uses and can radiate radio frequency energy and, if not installed and used in accordance with the instruction, may cause harmful interference to radio communications. However, there is no guarantee that interference will not occur in a particular installation. If this equipment does cause harmful interference to radio or television reception, which can be determined by turning the equipment off and on, the user is encouraged to try to correct the interference by one or more of the following measures:

- Reorient or relocate the receiving antenna.**
- Increase the separation between the equipment and receiver.**
- Connect the equipment into an outlet on a circuit different from that to which the receiver is connected.**
- Consult the dealer or an experienced radio/TV technician for help.**

Notice:

- (1) A Unshielded-type power cord is required in order to meet FCC emission limits and also to prevent interference to the nearby radio and television reception. It is essential that only the supplied power cord be used.*
- (2) Use only shielded cables to connect I/O devices to this equipment.*
- (3) Changes or modifications not expressly approved by the party responsible for compliance could void the user's authority to operate the equipment.*

II. Introduction

15" True Flat Touch Monitor is color TFT LCD monitor, integrate with projected capacitive touch, suitable for many types of application. Optional MSR and 2nd display, please contact our regional distributor for further information.

➤ Features

- Optimal display resolution 1024 * 768
- VESA 75 * 75 mm wall mount standard
- Durable and sturdy base design
- Optional 3 tracks Magnetic Strip Reader (MSR)
- Optional variety of 2nd display (8.4")
- Adjustable viewing angel freely up to 90 degrees horizontally
- Low power consumption only 20W with CCFL backlight

➤ Unpacking the monitor

- Put the monitor on a clean surface, make sure the box is in upright position.
- Remove packing materials from inside of box.

Check accessory

Please make sure all the accessory are included:

Standard Items

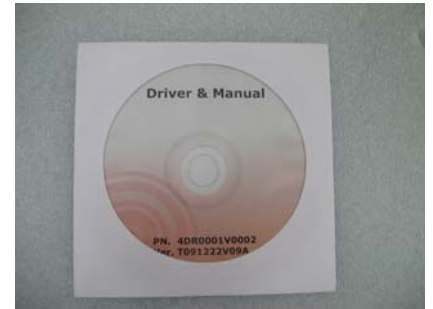
a.



b.



c.



d.



e.



f.



a. LCD Monitor

b. VGA cable

c. Touch driver / User Manual CD

d. USB Touch cable

e. Power adaptor

f. Power cable

Optional Items

a.



b.

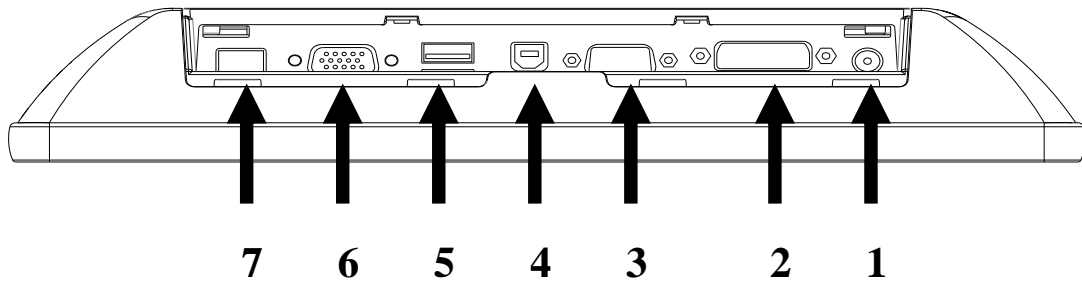


a. MSR

b. 2nd display (8.4")

III. Installation

➤ I/O placement



- | | | | |
|---|-----------------|---|------------|
| 1 | DC JACK | 2 | DVI |
| 3 | VGA | 4 | USB B Type |
| 5 | Dual USB A Type | 6 | RS232 |
| 7 | RJ45(RS232) | | |

➤ To PC

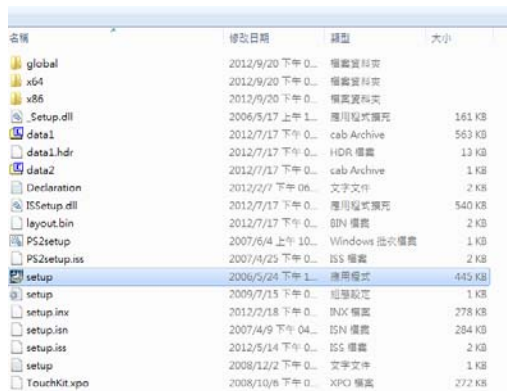


Touch **VGA**

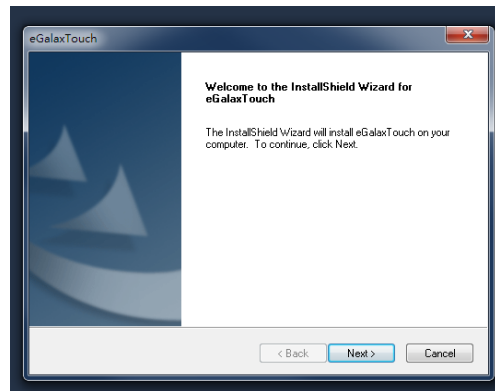
1. Connect VGA cable from monitor to PC
2. Connect USB touch cable to PC
3. Connect DC plug to monitor and the other side to wall outlet

➤ Touch Driver installation

P_CAP_Touch :



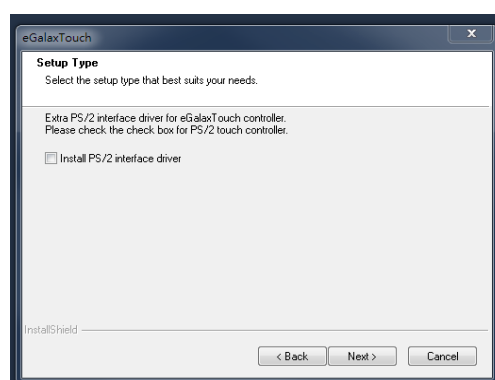
1. Double click "setup.exe" from driver menu



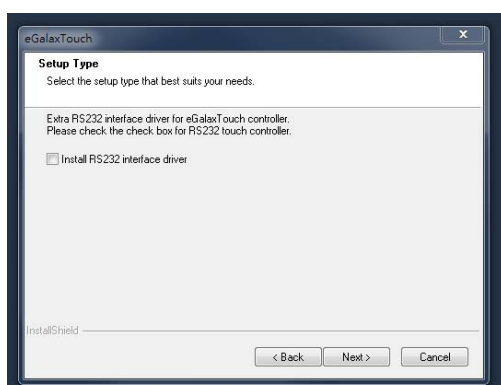
2. Click "Next" to start the setup program of eGalax Touch



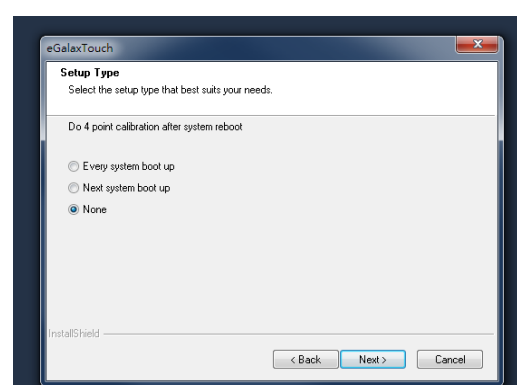
3. Select "I accept the terms of the license agreement" and click "Next" from License Agreement



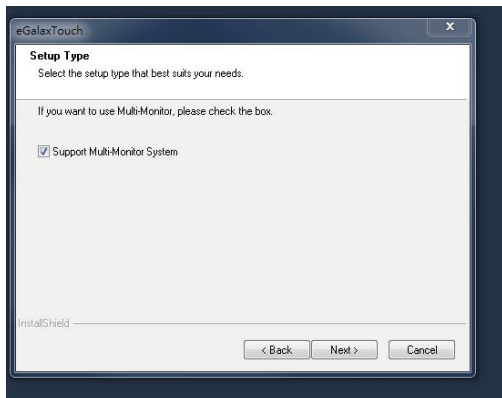
4. Click "Next" from Setup Type



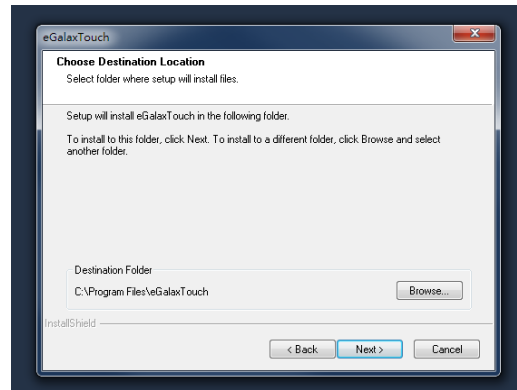
5. Click "Next" from Setup Type



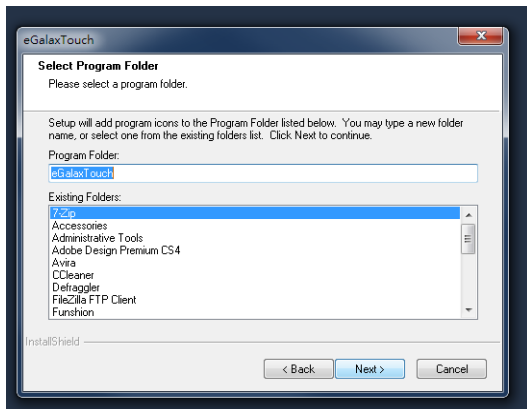
6. Click "Next" from Setup Type



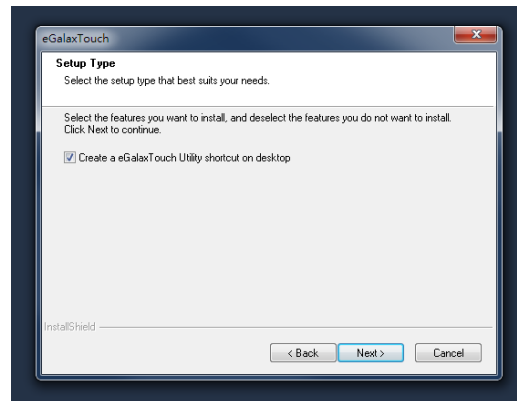
7. Select “Support Multi-Monitor System” and Click “Next”



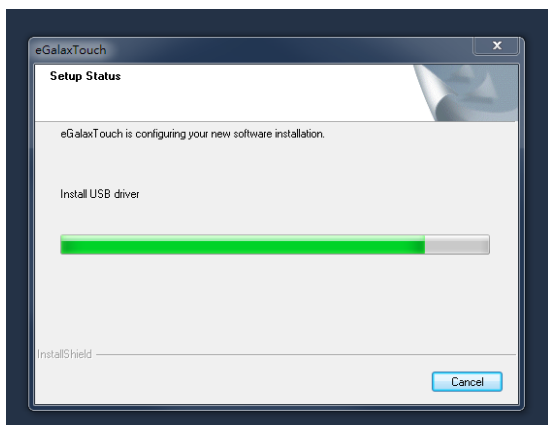
8. “Choose Destination Location” and click “Next”



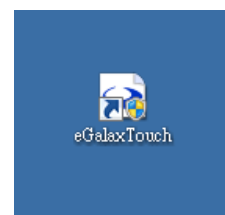
9. “Select Program Folder” and click “Next”



10. Click “Next” to start the eGalax Touch Setup



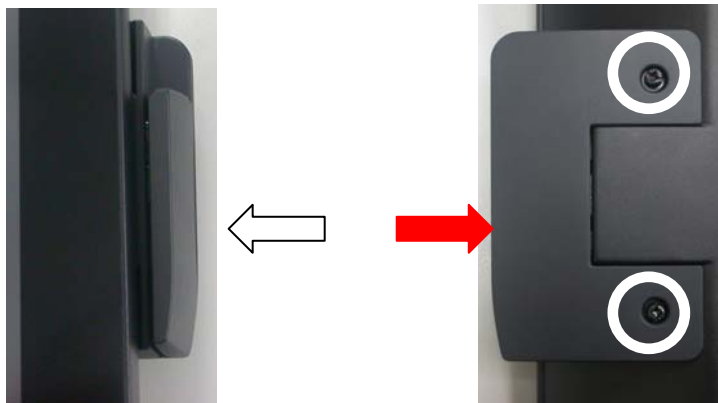
11. eGalax Touch Setup is running



12. Finish and create a eGalax Touch Utility shortcut on desktop

➤ **MSR installation (optional)**

Components of MSR Kit:



1. **Slide the MSR into the right position of the System.**
2. **Fasten the screws (x2).**

➤ Second Display (optional)

Components of Second Display Kit:



Second Display



Metal Bracket



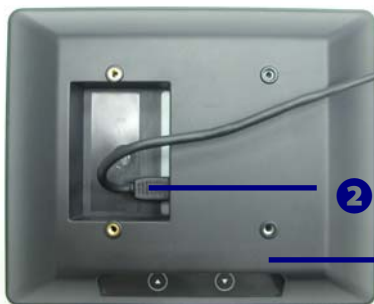
USB Cable



Screws



Screws



Fix the parts of Second Display modules as steps **1** → **2** → **3**

1. as above picture shows. (detail steps as below)

1 Put the second display upside down.

2 Connect the USB cable to the Second Display Module

3 Fasten the screws (x4) to fix metal bracket with the system.



2. **Fasten the screws (x3) to fix the Second Display module with the System.**
3. **Connect the USB cable to the System.**
4. **Finish.**

➤ **Control Buttons**



Auto Adjusting	<p>a.) Pressing to execute AUTO-Adjusting function. This function will set the monitor display area to the optimal position.</p> <p>b.) Sometimes this function can't achieve the optimal effects. Please follow the manual adjusting procedure.</p>
Menu	<p>When the light bar move other item, the key are used to select it, and read to adjust. Press the MENU key to activate the On Screen Display (OSD). Press twice to turn off the OSD. After 30 sec idle times, the OSD screen will automatically turn off.</p>
Power	<p>Use the power switch to turn the power ON or OFF. We recommend to turn your system power on first, then the LCD monitor.</p>
Up	<p>a.) When OSD mode is activated (When “MENU” key is pressed). The two keys are used to select the adjustment items.</p>
Down	<p>b.) When adjustment item is selected, the two keys are defined to decrease or increase the value of each selected item.</p>

➤ **Structure of OSD settings**

	First Level	Second Level	Third Level	Operating Procedure
Main Menu	Auto Adjust			Press “UP” or “DOWN” to adjust H-phase & H-position & V-position clock automatically.
	Luminance	Brightness Contrast Exit		Press “UP” key to increase brightness, “DOWN” key to decrease brightness. Press “UP” key to increase contrast, “DOWN” key to decrease contrast.
	Geometry	H. Position V. Position Clock Phase Exit		Press “UP” key to shift screen right, “DOWN” key to shift screen left. Press “UP” key to shift picture upward, “DOWN” key to shift picture downward. Adjust sampling clock of analog to digital converter until clock is equal to pixel frequency of video input. By varying this “UP” “DOWN” control the exact sampling time within the pixel can be adjusted.
	Color	9300K 6500K 5800K		Press “UP” or “DOWN” to choose three types of color temperature 9300°k, 6500°k and user define.
		User Preset	Red Green Blue Exit	
		Exit		
	OSD	H. Position V. Position OSD Timeout Exit		Adjust OSD frame horizontal location, press “UP” key to shift frame right, “DOWN” key to shift frame left , timeout and preset OSD. Adjust OSD frame vertical location, press “UP” key to shift frame upward, “UP” key to shift frame downward , timeout and preset OSD.
	Language	English French German Italian Spanish Japanese T. Chinese S. Chinese		Press “UP” or “DOWN” to choose any one of the following language, English, French, Germany, Italy, Spain , Japanese, Traditional Chinese and Simplified Chinese.
	Recall	Color Recall Recall All Exit		Recall the default value.
	Miscellaneous	Sharpness Display Information Exit		Press “UP” key to increase sharpness, “DOWN” key to decrease sharpness.
Exit				

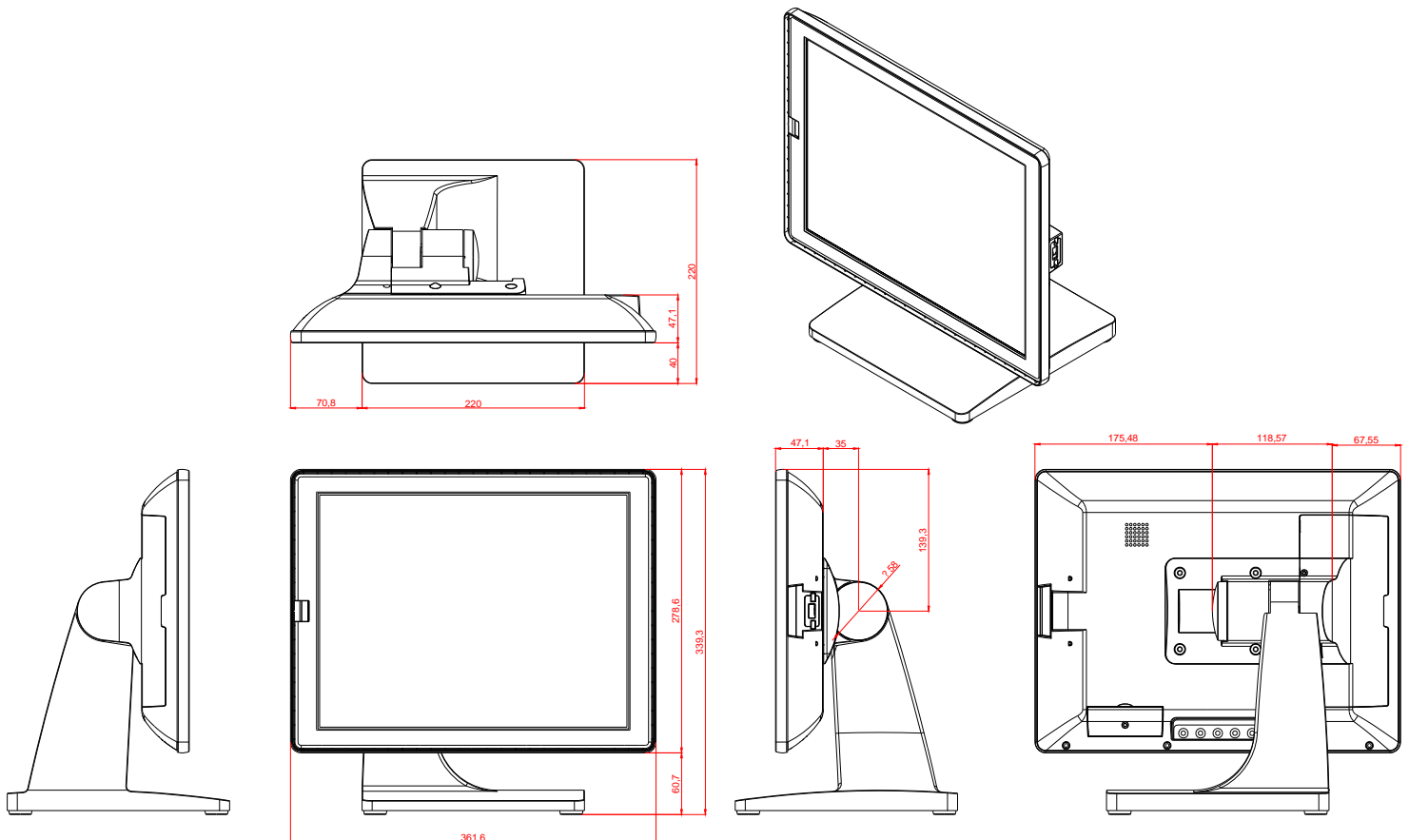
IV. For your safety

1. When move the monitor, always switch off power and disconnect all cables to avoid any danger.
2. Please use the power and signal cables correctly when install or bend it.
3. In case of notice any abnormal smell or noise, please stop operation and call the nearest dealer or service center.

V. Support timing chart:

Timing Mode	Reference Standard	Resolution	Pixel MHz	FH KHz	FV Hz	Interlace	H Polarity	V Polarity
Mode 1	VESA	1024×768	65.000	48.363	60.004	NO	-	-
Mode 2	VESA	1024×768	75.000	56.476	70.069	NO	-	-
Mode 3	VESA	1024×768	75.011	57.524	72.000	NO		
Mode 4	VESA	1024×768	78.750	60.023	75.029	NO		

VI. Mechanical Dimension



VII. Product General Specification

Model	Monitor	Monitor with stand
Cabinet color	Black	
Display size	15.0"	
Active Area	304 * 228 mm	
Optimal Resolution	1024 * 768	
Color Arrangement	RGB-stripe	
Brightness	250 cd/m ² (typ)	
Contrast Ratio	600:1	
Response Time	8 ms (typ)	
Viewing Angle	160 degrees (H) 160 degrees (V)	
Input Video Format	VGA/DVI	
Input Video signal connector	D-Sub 15 pins+DVI-D	
Touch Panel	Projected capacitive	
Touch Interface	USB	
Power consumption	20W	
Input Frequency	Horizontal : 31.5 kHz~60.2 kHz Vertical : 56.3Hz~75Hz	
Power supply	DC 12V +/- 10%	
Temperature	Operating : 0°C~40°C Storage : -10°C~50°C	
Humidity	Operating : 20%~80% Storage : 10%~90%	
Weight	3.3kg(net)	4.7kg(net)
Approvals	CE, FCC	
Wall Mount	VESA 75 * 75 mm	