

BKK 2184

Meat Mincer

User Manual

BEKO

Read this manual prior to initial operation of the product!

Dear Customer,

We hope that your product, which has been manufactured in modern facilities and passed through a strict quality control procedure, will give you very good results.

We advise you to read through this manual carefully before using your product and keep it for future reference.

The User Manual will help you use your machine in a fast and safe way.

- Read the User Manual before installing and starting your product.
- In particular, follow the instructions related to safety.
- Keep this User Manual within easy reach for future reference.
- Also read all additional documents supplied with this product.

Remember that this User Manual is also applicable for several other models. Differences between models will be identified in the manual.



This product has been produced in environmentally friendly, modern facilities

CONTENT

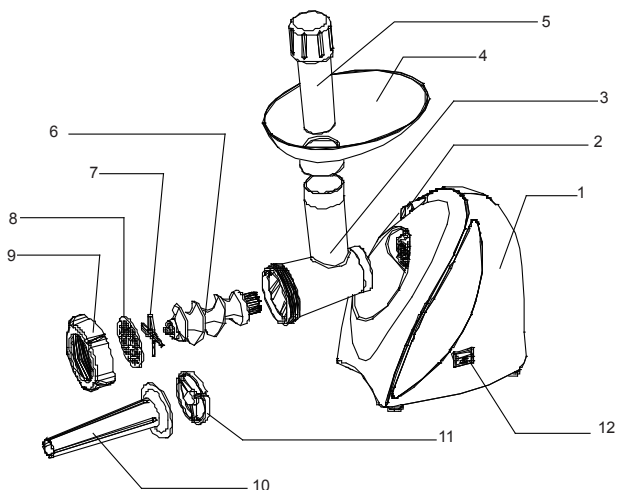
1 Safety Warnings	2
2 Technical Aspects Of Your Machine	3
3 Using Your Machine	4-5
4 Making Sausage	6
5 Cleaning and Maintenance	7

1 Safety Warnings

When using the electrical appliance, the below basic safety precautions should be followed:

- Read all instructions.
- To protect against risk of electrical shock do not put the motor unit in water or other liquid.
- Before using, check that the voltage power corresponds to the rating label of the appliance.
- Close supervision is necessary when any appliance is used by or near children.
- Do not operate any appliance with a damage cord or plug or after the appliance malfunction or has been damaged in any manner. Return the appliance to the nearest authorized service facility for examination, repair or adjustment.
- Unplug from outlet when not in use, before putting on or taking off parts, and before cleaning.
- Never feed food by hand. Always use food pusher.
- Blades are sharp, so handle carefully.
- The use of attachment, not recommended or sold by manufacturer may cause fire, electric shock or injury.
- The appliance cannot be used for blending hard and dry substance, otherwise the blade could be blunted.
- Do not let cord hang over edge of table or counter.
- Do not use fingers to scrape food away from discharge disc while appliance is operating. Cut type injury may result.
- Do not use outdoors.
- Never run the appliance empty after assembling the blade and blade tray. Otherwise the blade and blade tray will be abraded seriously, and accelerate the unit aging.
- Save these instructions
- This appliance is not intended for use by persons (including children) with reduced physical, sensory or mental capabilities, or lack of experience and knowledge, unless they have been given supervision or instruction concerning use of the appliances by a person responsible for their safety. Children should be supervised to ensure that they do not play with the appliance.

2 Technical Aspects Of Your Machine



- 1- Motor Unit
- 2- Lock button
- 3- Blending pole support
- 4- Funnel
- 5- Food pusher
- 6- Blending pole
- 7- Blade
- 8- Blade tray
- 9- Blade cover
- 10- Sausage pole
- 11- Sausage pole support
- 12- Switch

Net weight : 3.25 kg

Voltage : 230 V ~

Frequency : 50 Hz

Power : 600 W

Isolation Class : II

Values stated on your product labels or in the documentation accompanying it are obtained in laboratory in accordance with the relevant standards. These values may change depending on operational and environmental conditions of the product.

3 Using Your Machine

Before the first use, please clean all the detachable parts such as food pusher, funnel, blending pole support, blade tray, blade cover, blade and so on completely, the blade is sharp, ensure that your hands do not be hurt.

Blending

1. Assemble the blending pole, blade, blade tray and blade cover as illustrated as figure (see fig.1) before blending.

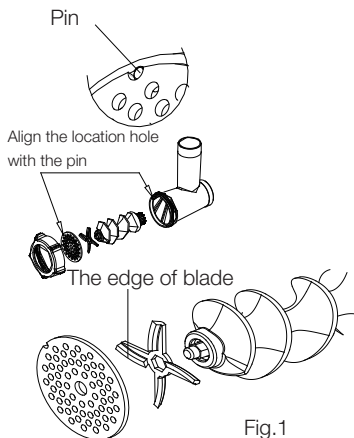


Fig.1

Note: Let the location hole on the blade tray align with the pin, and make sure the edge of blade toward the blade tray when assembling. Never assemble the blade reversely.

2. Assemble the blending pole support into the motor unit. Press the lock button with thumb one hand (see arrow 1 of fig.2), and hold the blending pole support with the other hand, insert it into the hole of the unit and turn it anti-clockwise until it cannot move any longer (see arrow 2 of fig.2). Release the lock button, the blending pole support is fixed on the motor unit, and the appliance can be used now.

Caution: Make sure the appliance is unplugged when assembling.

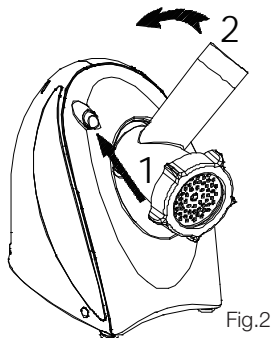


Fig.2

3. Put the funnel on the blending pole support.

4. Ensure that the unit is set at 0 position, then plug in power supply.

5. Press the switch to "on" position (the blending blade turns anti-clockwise), when the appliance operates normally, put the meat piece into funnel, then press the

food pusher to the lowest position.

Note: the meat piece should be able to put into the hole of funnel and no bone in them.

6. The max operation time shall not exceed 1 minute and minimum 1 minute rest time must be maintained between two consecutive cycles.

7. Place a clean container with proper size under blade cover to receive meat powder come from the appliance.

8. Press the switch to “off” position immediately when blocking exists during blending, then press down to “reverse” position, let the unit turn clockwise, then release immediately, when the switch resets to “off” position, press the switch to “on” position again, if the blocking still exists, repeat the operations until the blocking disappears. When blending finishes, unplug the power source.

9. Disassemble the blending pole support assembly: press down lock button properly with thumb of left hand (see arrow 1 of Fig.3), turn the blending pole support assembly clockwise with right hand (see arrow 2 of fig.3).

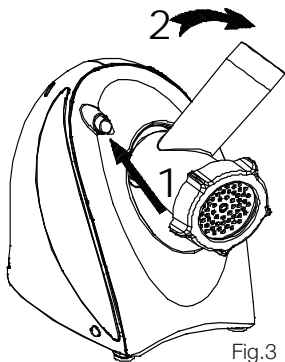
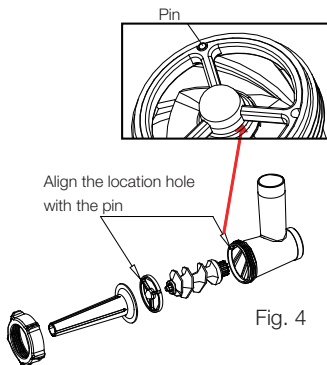


Fig.3

Caution: Ensure that the motor unit is unplugged when disassembling.

4 Making Sausage

1. Assemble the blending pole, sausage pole support, sausage pole, blade cover as illustrated as figure (see fig.4).



3. Press the switch to “on” position, the appliance turns anti-clockwise and the meat powder enters the small intestine, you can tie anywhere you like with thread to make the sausage has proper length.

Note: Never assemble blade and blade tray when use for making sausage, and do not assemble sausage pole and sausage pole support when blending meat.

2. Set clean small intestine to sausage pole as the figure 5, then place blended meat powder into funnel.

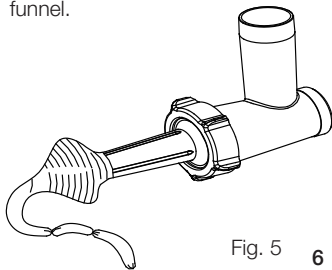


Fig. 5

5 Cleaning and Maintenance

1. Unplug the power cord before cleaning.
2. Disassemble the blending pole support, blending pole (see fig.6), blade tray, blade, blade cover, sausage pole, sausage pole support, food pusher, funnel and so on except the motor unit, then immerse them in water for cleaning.

The blending pole is as follows, you can disassemble them to clean if necessary, then replace in turn (see fig.6)

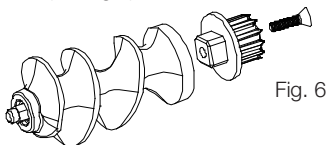


Fig. 6

Caution: The blade is sharp, so handle carefully when cleaning.

3. Wipe the outside surface of the motor unit with a damp cloth, then dry thoroughly.

Note: Never immerse the motor unit in the water for cleaning.

