

Epson EH-TW6100W Brilliant 2D & 3D Entertainment with Wireless HDMI



Featuring revolutionary wireless technology, the EH-TW6100W makes it easy to wirelessly project content from your Blu-ray® player, Apple® TV or Gaming Console — without running extra wires. Use the included EPSON® wireless transmitter for quick, easy setup. Then, access all of your entertainment devices wirelessly. And, with Full HD 1080p performance and a remarkable contrast ratio of up to 40,000:1, this innovative performer makes it simple to entertain family and friends with impressive, larger-than-life images.

KEY FEATURES:

Amazing colour brightness — 2,300 Lumens colour brightness and 2,300 Lumens white brightness

A true cinematic experience — 2D and 3D, Full HD 1080p technology, and a contrast ratio up to 40,000:1

2D-to-3D conversion — Easily transform 2D images to spectacular 3D for unlimited 3D content

Wireless HDMI — Includes 5 HDMI inputs, 1 HDMI out and 1 optical port

Split Screen feature (2D mode) — Project two images side-by-side from two different sources

Easy setup — Image adjustment tools included

Captivating sound — Two built-in 10 W stereo speakers for lifelike sound

Exciting 3D made easy — Two pairs of RF 3D glasses included

FEATURES AND BENEFITS

C2Fine™ technology delivers a higher contrast ratio - C2Fine offers smooth, uniform images with exceptional contrast for better image quality. Based on this new phase-compensation technology, light leakage is eliminated, and, when combined with the auto iris, this technology allows for contrast ratios of up to 40,000:1.



Without C²Fine



With C²Fine

Amazing colour brightness - For the best quality images, look for projectors where the colour brightness and white brightness are equal. If colour brightness is lower than white brightness, photos, videos and graphics can look dull and washed out. The Epson TW6100W delivers 2,300 Lumens of colour brightness and 2,300 Lumens of white brightness (light output) for rich, colourful images.



EPSON®
Color brightness equals white brightness



Competitor
Color brightness significantly lower than white brightness

Actual photograph of side by side projected images from an identical source. Price, resolution and white brightness are similar for both projectors (EPSON and competitor). Both projectors are set to their brightest mode.

Bright 3D Drive technology for 3D cinematic adventures - Enjoy thrilling 3D adventures right in the comfort of your living room. Featuring Bright 3D Drive technology, the EH-TW6100W puts you right in the middle of the action. Epson's drive system minimizes the blackout time of 3D glasses and provides greater brightness when viewing 3D content.

2D-to-3D conversion - Transform any 2D movie, from the latest science-fiction adventure to your favourite classic, to spectacular 3D. Or, watch the big game in exciting 3D. The EH-TW6100W makes it easier than ever with convenient 2D-to-3D conversion. With just the touch of a button, you can watch your favourite shows and movies in eye-popping 3D. There are no special discs required. And, the possibilities are endless.



Two rechargeable RF 3D glasses included - Enjoy 3D adventures from any seat in the house. Line of sight is not required with the included RF 3D glasses. Rechargeable for up to 40 hours of battery life, these innovative glasses have a 3-minute quick-charge feature for up to 3 hours of battery life.

For more information please visit www.channel.epson.com.au



Super Resolution – Makes DVDs and standard definition content come alive via its mixed colour separation techniques and imaging simulation. It delivers crisp, clear images with super high-quality resolution. It also sharpens blurry images that have been enlarged by a general upscaling process.

Super Resolution Technology OFF



Super Resolution Technology ON



Only from Epson — Wireless HDMI

Put your projector anywhere you want without running extra wires

Setup your projector wherever you want. There's no need to worry about drilling holes, running cables or taking a lot of time for complicated software installations. Just plug your projector into a power source. The wireless receiver is built in so you do not need to connect anything else. And, the wireless transmitter's compact design makes it blend into any environment. The EPSON transmitter streams a Full HD signal wirelessly, so you can keep things tidy and keep your A/V equipment separate from your projector.



Secure, Full HD 1080p video wireless streaming



The EPSON Wireless HD™ streams reliable, HD 1080p, 60 Hz video from one device to another, within the same room, at a distance of up to 10m, with stellar full HD 1080p image quality. The system is HDCP compliant and can stream copy-protected content. Its fast signal transfer ensures real-time transmission of HD media without buffering or drop out. The wireless transmitter provides a secure connection that resists interference with nearby wireless routers.



Connect your receiver, Blu-ray player, game console, streaming device like Apple TV, and more. You can even connect speakers via the optical connection. View a second device using the wireless picture-in-picture mode. Switch between up to 5 connected devices with the preview mode. The wireless transmitter connects to up to 5 HDMI devices simultaneously, has one HDMI out connection, and one optical port.

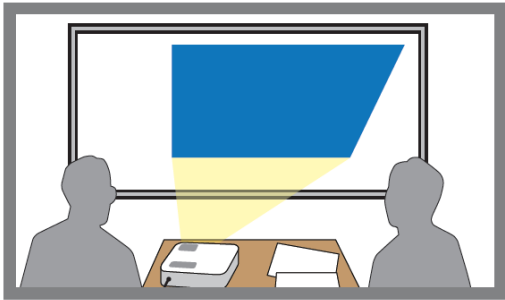
Pass-through mode

Setup your A/V equipment once, connecting to both your projector and a second display device such as a TV. Whether you want to view content on your projector or your second device, you no longer need to unplug and re-plug in your devices. All you need to do is connect both devices to the EPSON wireless HDMI transmitter and then choose which display device you'd like to use.

For more information please visit www.channel.epson.com.au



Installation Flexibility - A powerful 1.6x Optical zoom teamed with vertical and horizontal keystone correction makes projector placement a breeze. The TW6100W automatically corrects the image vertically. And for horizontal image correction just move the easy-slide control bar to make the necessary adjustments.

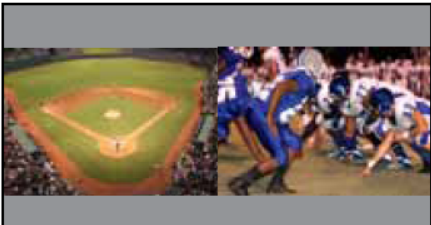


Without image adjustment tools

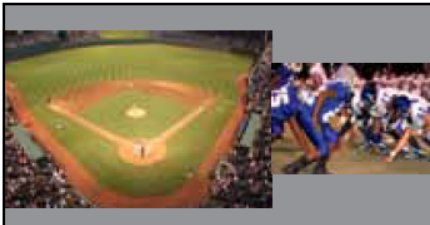


With image adjustment tools

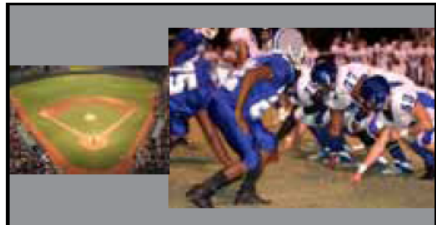
Split Screen Feature - Project two images (video or still) side-by-side from two different sources simultaneously. Choose from three layout options. You can swap the images as well as choose the source for audio.



Layout Option 1: 50-50% split screen



Layout Option 2: Main image on left



Layout Option 3: Main image on right

Captivating Sound – Enjoy amazing audio with two built-in 10W speakers



Pricing

Product Code	Description	RRP(inc gst)
Hardware		
V11H502053	Epson EH-TW6100W	\$2,799
Optional Accessories		
V13H010L68	ELPLP68 – Lamp	\$279
V13H134A38	ELPAF38 – Air Filter	\$21
V12H548001	ELPGS03 – 3D Glasses	\$99
V12H564C12	ELPAC01 – 3D Glasses Charger	\$18

Part Numbers and Dimensions

Description	Part Number	Barcode
Epson EH-TW6100W Projector	V11H502053	9314020612237
Product Dimensions		
Dimensions – D x W x H	365 x 420 x 137.3 mm	
Weight	6.2kg	
Carton Dimensions		
Dimensions – D x W x H	438 x 501 x 310 mm	
Weight	Approx. 9.1kg	

Description	Product Code	Dimension (DxWxH)	Weight (g)
ELPLP68 – Lamp	V13H010L68	159 x 141 x 142 mm	377.8
ELPAF38 – Air Filter	V13H134A38	153 x 83 x 43 mm	65.3
ELPGS03 – 3D Glasses	V12H548001	59 x 84 x 177 mm	151.7
ELPAC01 – 3D Glasses Charger	V12H564C12	83 x 63 x 73 mm	78.3

Specifications

What's in the Box	EH-TW6100W Projector, Power Cable, Remote Control + Batteries, 3D Glasses + USB cable for charging x 2, WirelessHD Transmitter Set + 2m HDMI Cable, HDMI Cable Clamp x 2, User's Manual
Technology	
Projection System	RGB liquid crystal shutter projection system
LCD Panel	0.61-inch wide panel with MLA (D9.8, C2Fine, 12Bit)
Optical	
Zoom	1-1.6
Screen Size	30" to 300" [0.87 to 8.9 m] (Zoom:Wide) 30" to 300" [1.42 to 14.5 m] (Zoom:Tele)
Keystone Correction	Vertical : -30 to +30 degrees Horizontal: -30 to +30 degrees (Slide Bar)
Projection Distance	100" screen 2.95 - 4.8 m
Throw Ratio	1.32 (Zoom:Wide), 2.15 (Zoom:Tele)
Projection Lens F Number	1.51-1.99
Projection Lens Focal Length	18.2mm-29.2mm
Focus Method	Manual
Image	
Colour Light Output	2,300 Lumens
White Light Output	2,300 Lumens
Resolution	1080p
Native Aspect Ratio	16:9
Contrast Ratio	40,000:1
Lamp Type	230 W UHE (E-TORL)
Colour Video Processing	Full 10 Bit

For more information please visit www.channel.epson.com.au



Connectivity	
Input: Video	1 x RCA (Yellow), 1 x Component Video
Input: Computer	1 x D-sub 15-pin (RGB)
Input: Digital	2 x HDMI
Input: USB	1 x USB A (Photo Viewer)
Input: Control	1 x RS232c
Advanced Features	
WirelessHD	Yes
Super Resolution	Yes
3D Formats	Top-and-Bottom, Side-by-Side, Frame Packaging
2D to 3D Conversion	Off / Weak / Medium / Strong
Internal Speakers	2 x 10W
Split Screen	Yes
Direct Power On	Yes
Security	Kensington Lock Provision
Colour Modes	2D: Dynamic, Living room, Natural, Cinema, Auto 3D: 3D Dynamic, 3D Cinema
General	
Dimensions D x W x H	365 x 420 x 137.3 mm
Weight	6.2kg
Product Warranty	2 Years
Lamp Warranty	1yr or 750 Hrs - Whichever comes first
Power Consumption: Lamp on	358W
Power Consumption: Standby	0.35W
Noise Level	32 dB

Connectivity

EH-TW6100W



WirelessHD Transmitter



For more information please visit www.channel.epson.com.au

