

CATALOGUE

NOVEMBER 2012

Contents

product family	page
TV-Radio distribution	1
TV VHF-UHF modulation	6
PC-LAN networking	8
Telephony	10
Music distribution	11
Audio-Video distribution	13
/HQ Balanced Composite Video	
/HDMI	
Power supply	15
DIN-rail connectors	17
Wall Outlets	20
Connectors	21
Adapters	24
/RJ45-RJ45 Link splitters	
Cable	25
/OmniMedia	
/Loudspeaker Cabling	
/Coax	
DIN-rail enclosures	28
/Xpress - flexible range	
/Xpert - professional range	
/Accessories	
19 inch panels	30
Patchcords	31
/OmniMedia RJ45-RJ45	
/UTP RJ45-RJ45	
/Coax F-F	
Connection cords	32
/OmniMedia RJ45-RJ45	
/UTP RJ45-RJ45	
/UTP RJ11-RJ45	
/Coax RF	
Tooling	34
Loudspeakers	35

ABI-EV2012S00

Home TV Gateway - RF Broadband, Sat, IP, xDSL - 4port Master



This wideband coax and twisted pair amplifier is the entry-point for the home of

- aerial-based television channels (FM, DVB-T, Satellite dish)
- a combination of broadband coaxial network CaTV signals and Satellite dish
- a combination of one of the previous options with 10/100bTEthernet for indirect interactive returnpath or Smart TV connection.

Input ports:

The amplifier's main input accepts broadband FM and TV signals in the range between 88 and 862MHz and TV signals from a Satellite dish in the range between 950MHz and 2150MHz. The input also carries return path signals in the reverse direction in a band between 5MHz and 85MHz for use on Docsys compliant CableTV networks.

Output ports:

The combination FM/VHF/UHF is offered on four twisted pair RJ45 connectors that can be connected via OmniMedia cable to RJ45 wall outlets. These ports carry back In-band RF , Ethernet or Phone line type return path signals for interactive digital TV services.

The combination FM/VHF/UHF/SAT-IF is offered on a standard level output coax connector that can be connected to a link with a standard triple FM/TV/Sat wall outlet, for instance located in the main viewing room.

To extend the unit, two piggyback coaxial output ports supply high-level broadband signals to feed slave twisted pair output modules, thus increasing the scope of the base amplifier module from 4 ports to a total of 8 or 12 ports.

Required power supply: ABI-PS1001S14

Characteristics:

- 1 F coax input (IEC61169-24) for aerial/cable/sat
- 1 F coax output for triple outlet TV/FM/Sat
- 2 F coax outputs for slave twisted pair modules
- 4 RJ45 shielded TV ports (IEC60603-7)
- 4 RJ45 auxiliary Ethernet+phone ports
- Direct interactive return path (Docsys)
- Indirect interactive return path (10/100bT)
- Max. Link length: 35m OmniMedia cable
- 9 DIN positions wide

Complies with:

- Safety: EN60065
- EMI: EN50081-1 & EN50082-1
- Immunity test voltagecontact discharge 4kV, air discharge 8kV
- RoHS compliance: 2002/95/EC
- WEEE compliance: 2002/96/EC

WxHxD (mm): 157x80x65

0,5 kg

Individually packaged

ABI-EV2013S00

Home TV Gateway - RF Broadband, IP, xDSL - 4 port Slave



This unit is a slave extension unit that increases the number of RJ45 TV Home links of an ABI-EV2012S00 Home TV gateway master unit.

Input port:

The slave unit's main input accepts broadband FM and TV signals in the range between 88 and 862MHz coming from one of the master unit's coaxial extension ports.

Output ports:

The combination FM/VHF/UHF is offered on four twisted pair RJ45 connectors that can be connected via OmniMedia cable to RJ45 wall outlets. These ports carry back Ethernet or Phone line type return path signals for interactive digital TV services.

A significant reduction in price per port is achieved in larger properties by using one or two of these slave units to extend the number of ports of a Master Home TV gateway.

Characteristics:

- 1 F coax input (IEC61169-24) for aerial/cable/sat
- 4 RJ45 shielded TV ports (IEC60603-7)
- 4 RJ45 auxiliary Ethernet+phone ports
- Indirect interactive return path (10/100bT)
- Max. Link length: 35m OmniMedia cable
- 9 DIN positions wide

Complies with:

- Safety: EN60065
- EMI: EN50081-1 & EN50082-1
- Immunity test voltage/contact discharge 4kV, air discharge 8kV
- RoHS compliance: 2002/95/EC
- WEEE compliance: 2002/96/EC

WxHxD (mm): 157x80x65

0,5 kg

Individually packaged

ABI-EV2014S00

Home TV Gateway - RF Broadband - 4 port Slave



This unit is a slave extension unit that increases the number of RJ45 TV Home links of an ABI-EV2012S00 Home TV gateway master unit.

Input port:

The slave unit's main input accepts broadband FM and TV signals in the range between 88 and 862MHz coming from one of the master unit's coaxial extension ports. The input port also carries return path signals in the reverse direction in a band between 5MHz and 85MHz for use on Docsys compliant CableTV networks.

Output ports:

The combination FM/VHF/UHF is offered on four twisted pair RJ45 connectors that can be connected via OmniMedia cable to RJ45 wall outlets. These ports carry back In-band RF type return path signals for interactive digital TV services.

A significant reduction in price per port is achieved in larger projects by using one or two of these slave units to extend the number of ports of a Master Home TV gateway.

Characteristics:

- 1 F coax input (IEC61169-24) for aerial/cable/sat
- 4 RJ45 shielded TV ports (IEC60603-7)
- Direct interactive return path (Docsys)
- Max. Link length: 35m OmniMedia cable
- 4 DIN positions wide

Complies with:

- Safety: EN60065
- EMI: EN50081-1 & EN50082-1
- Immunity test voltage/contact discharge 4kV, air discharge 8kV
- RoHS compliance: 2002/95/EC
- WEEE compliance: 2002/96/EC

WxHxD (mm): 71,2x80x65

0,28 kg

Individually packaged

ABI-AC1002S00

Balun for FM-VHF-UHF, fixed gain



Adapter to connect a TV set or a digital settopbox to a universal OmniMedia wall outlet using a standard RF coax lead. Ensures proper impedance matching (100-75 Ohm). In combination with coax gender changer ABI-CX1005S00 this adapter can be used to connect an FM or DAB radio or tuner. Adapter ABI-AC1030S00 allows the simultaneous connection of a TV and a Radio from a single RJ45 socket.

Characteristics:

- RJ45 plug (100 Ohm) to IEC61169.2 male (75 Ohm)
- Frequency range: 5 - 862 Mhz

Complies with:

- IEC61169.2 (DIN 45325) male
- EN 50083-2
- EN 50083-7

WxHxD (mm): 16,7x33,2x52,2

0,013 kg

Individually packaged

ABI-AC2001S00

Hybrid TV+FM+10/100bT+phone adapter, with gain adjustment (CS)



Triple-play adapter to connect a TV set, a digital settopbox and an FM tuner to a universal OmniMedia RJ45 wall outlet using a standard RF coax and RJ45 patchleads. The adapter separates the various signals carried over the single OmniMedia RJ45 link: TV, FM, 10/100bT Fast Ethernet and 2-wire phone. Ensures proper impedance matching (100-75 Ohm). The gain is adjustable to guarantee optimum picture quality. This adapter is the perfect match with the Home TV Gateway modules ABI-EV2012S00 and ABI-EV2013S00.

Characteristics:

- Link interface: RJ45
- TV interface: 110-862MHz, IEC M
- FM interface: 88-108MHz, IEC F
- Fast Ethernet: 10/100BT, RJ45
- 2-wire phone: RJ11 (6P4C)

Complies with:

- Safety: EN60065
- EMI: EN50081-1 & EN50082-1
- Immunity test voltagecontact discharge 4kV, air discharge 8kV
- RoHS compliance: 2002/95/EC
- WEEE compliance: 2002/96/EC

WxHxD (mm): 40x20x50

0,11 kg

Individually packaged

ABI-EV1012S00

Twisted Pair wideband 4 ports TV/Radio amplifier - 2 inputs



Wideband video amplifier with 1 coaxial F input for aerial or cable signals and 1 input for signals from an RF modulator (eg ABI-EV1017S00), and 4 balanced RJ45 outputs. Ensures distribution of TV, FM radio signals and home A/V channels over OmniMedia universal cabling; balances the output signals to be compatible with the OmniMedia pair cabling system; amplifies the signal with pre-compensation of the OmniMedia cable characteristic; matches the impedance of the cable types (75-100 Ohm). The gain of the antenna/cable input is adjustable to ensure optimum picture quality (use the wideband power test tool ABI-TT1003S12). The device is equipped with IR-Bus, a return channel for the infrared remote control signals of DVD player, SAT decoder, camera,... The unit does NOT have an internal direct return path amplifier.

Required power supply: ABI-PS1001S14

Characteristics:

- Frequency range: 5 - 862 MHz
- 1 F coax input (IEC61169-24) for aerial/cable
- 1 F coax input (IEC61169-24) for RF modulator
- 4 RJ45 shielded output jacks (IEC60603-7)
- IR-Bus interface on output ports (electrical)
- IR-Bus interface on side flanges (optical)
- NO internal return path

Complies with:

- EN50083-2; 2002 Emission/Immunity
- Directives: 89/336/EC; 92/31/EEC

WxHxD (mm): 71,2x80x65

0,29 kg

Individually packaged

ABI-EV1001S00

Wideband 4 ports coax TV/Radio AERIAL preamplifier



Wideband video amplifier with 1 coax F input and 4 coax F outputs. Optimised to distribute TV and FM radio signals on 75 Ohm coaxial cable (eg ABI-KX1002S00) throughout the home to a max. of 4 TVs or video recorders. The coax amplifier can be used as antenna amplifier or to compensate coupling losses when several ABI-EV1012S00 amplifiers are being installed.

The amplifier does NOT have an integrated return path amplifier.

Package includes 3 coaxial 75 Ohm termination resistors ABI-AX1003S00.

Required power supply: ABI-PS1001S14

Characteristics:

- Frequency range: 5- 862 MHz
- 1 F coax input (IEC61169-24)
- 4 F coax outputs (IEC61169-24)
- 5V power supply (from ABI-PS1001Sxx)
- DIN-rail mount - 4 std positions wide
- NOT fitted with a direct interactive return path circuit

Complies with:

- EN50083-2; 2002 Emission/Immunity
- Directives: 89/336/EC; 92/31/EEC

WxHxD (mm): 71,2x80x65

0,28 kg

Individually packaged

ABI-AX1001S02**Coax 2-way splitter (-4dB) with F connectors**

Coaxial wideband 2-way splitter (or combiner). 1 F connector in, 2 F connectors out. 75 Ohm impedance. Used to split antenna, CaTV or modulator signals to separate amplifiers.

Characteristics:

- RF-IN: F female connector
- RF-OUT: 2x F female connector
- Frequency range: 5 - 862 MHz

Complies with:

- IEC61169-24 F type

WxHxD (mm): 58x50x15

0,034 kg

Individually packaged

ABI-EV1017S00

4-channel Audio/Video modulator with IR-Bus



Up to 4 Audio/Video sources (DVD player, satellite decoder, video recorder, surveillance camera,...) can be watched on any TV set attached to the home network by using the RF modulator in combination with wideband amplifier ABI-EV1012S00 and AV adapters ABI-AS1016S00 (scart) or ABI-AC1003S00 (CVBS), effectively creating up to 4 new home channels. Each A/V source signal is being modulated on a specific RF carrier frequency. A built-in pilot tone and B&W pattern generator simplify the tuning procedure. The device is equipped with IR-Bus, a return channel for the infrared remote control signals of DVD player, SAT decoder, video recorder,...

Required power supply: ABI-PS1001S14

Characteristics:

- Frequency range: 62 - 862 MHz (programmable)
- 1 F coax output (IEC61169-24) with 4 RF channels
- 16 pre-programmed frequency grids
- Frequencies reprogrammable via serial port (kit ABI-EV1017SPK)
- 4 RJ45 shielded A/V input jacks (IEC60603-7)
- IR-Bus interface on input port

Complies with:

- EN50083-2; 2002 Emission/Immunity
- Directives: 89/336/EC; 92/31/EEC

WxHxD (mm): 71,2x80x65

0,28 kg

Individually packaged

ABI-EV1017SPK

Programming kit for the ABI-EV1017S00 VHF/UHF modulator



This kit is used in combination with a laptop computer to reprogram the channel frequencies and/or modulation formats (PAL I, B/G, Secam) of RF modulator ABI-EV1017S00.

The kit comprises a serial interface cable, a CD-Rom and a User Manual.

If the computer has no serial port, a serial port to USB adapter is also required.

Characteristics:

Kit includes:

- a CD-ROM with instructions
- a serial interface cord (DB9)

Protective postal bag 17x22cm

0,15 kg

Individually packaged

ABI-AS1016STR

SCART/RJ45 input-output adapter for ABI-EV1017S00



Bi-directional adapter to connect either an audio/composite video source (DVD player, satellite decoder, video recorder,...) or display (TV set, monitor, beamer,...) equipped with a SCART connector to a universal OmniMedia wall outlet through standard RJ45-RJ45 patch leads. Bi-directional IR-Bus interface for remote control transmitter or receiver wands.

A unit can be used to bring AV signals to the ABI-EV1017S00 modulator.

Warning: NOT compatible with ABI-AV1001STR or ABI-AV1002STR

Characteristics:

- Scart-RJ45 flexible lead: 25cm
- Link interface: RJ45
- Source side interface: RJ45
- Monitor side interface: RJ45
- IR-Bus: 2x 2,5mm jack
- Aluminium housing

0,1 kg

Individually packaged

ABI-AC1003S00**Adapter for Composite Video signal**

Video adapter to connect an analog camera or camcorder to a universal OmniMedia wall outlet by means of a standard video coax patch cable. Ensures impedance matching (100-75 Ohm). A pair can be used to set up a short RCA-RCA video extension, a single unit can be used to bring a video signal to the ABI-EV1017S00 modulator or the ABI-EV1018S00 active AV splitter.

Warning: NOT compatible with ABI-AV1001STR or ABI-AV1002STR

Characteristics:

- RJ45 male (100 Ohm) to RCA/Cinch (75 Ohm) female

WxHxD (mm): 16,7x33,2x52,2

0,013 kg

Individually packaged

ABI-EL1001S00**Fast Ethernet Switch - 5 ports 10/100bT - DIN-rail**

The 5 port 10/100Mbps Switch automatically recognises all attached network equipment and chooses the highest possible bit rate (10 or 100Mbps) and transmission mode for each equipment. The auto MDI/MDIX function eliminates the need (and risk of errors) for crossover patch cords.

Required power supply: ABI-PS1001S14

Characteristics:

- 5 ports 10/100Mbps
- MDI/MDIX
- Auto sense/auto negotiate
- 5V power supply (from ABI-PS1001Sxx)
- DIN-rail mount - 4 std positions wide

Complies with:

- IEEE 802.3 10Base-T Ethernet
- IEEE 802u 100Base-TX Fast Ethernet
- EN50022 Class B; Emission
- Directives: 89/336/EEC; 92/31/EEC

WxHxD (mm): 71,2x80x65

0,28 kg

Individually packaged

ABI-EL2002S00**Gigabit Ethernet Switch - 8 ports 10/100/1000bT - DIN-rail**

8 full GbE ports with nonblocking wire-speed performance. The ports automatically recognise all attached network equipment and choose the highest possible bit rate (10, 100 or 1000Mbps) and transmission mode for each equipment. The auto MDI/MDIX function eliminates the need (and risk of errors) for crossover patch cords.

Three of the eight ports may be forced in Fast Ethernet mode and carry a secondary phone or data signal over the same RJ45 link. The secondary signal is connected to the RJ11 injection ports on the top of the unit by using special patchcords ABI-PC2002S01 (data-data) or ABI-PC2002S04 (data-phone). This practical solution reduces the number of required wire links in environments like a home office where there is a shortage of connection sockets.

Required power supply: ABI-PS1001S14

Characteristics:

- 8 ports 10/100/1000Mbps
- MDI/MDIX
- Auto sense/auto negotiate
- 5V power supply (from ABI-PS1001Sxx)
- Power supply jumper cable included
- DIN-rail mount - 9 std positions wide

Complies with:

- IEEE 802.3 ab 10/100/1000Mbps
- Supports IEEE Std802.1D, 802.1w, 802.1s, 802.1X
- 8K MAC addresses
- Jumbo Frame Support
- Full duplex flow control
- EN50022 Class B; Emission
- Directives: 89/336/EEC; 92/31/EEC

WxHxD (mm): 157x80x65

0,5 kg

Individually packaged

ABI-PC2002S01**Hybrid injection cord Data-Data (for switch ABI-EL2002S00)**

ONLY USE with the multifuntion Gigabit ABI-EL2002S00 switch!

This hybrid injection cord is used to inject into one of the EL2002S00's three hybrid links a supplementary Data signal (Ethernet or Fast Ethernet).

The RJ45 side of the cord is meant to attach to the Ethernet stream that is being injected, the RJ11 side of the cord goes into one of the EL2002's injection port on top of the unit.

At the other end of the EL2002S00's combined link, an adapter AP1002S01 is used to separate the two datastreams (one Fast Ethernet from the EL2002S00's bus, one Ethernet or Fast Ethernet from the injection port).

ONLY USE with the multifuntion Gigabit EL2002S00 switch!

L (cm): 45

0,026 kg

Individually packaged

ABI-PC2002S04**Hybrid injection cord Data-Telephone (for switch ABI-EL2002S00)**

ONLY USE with the multifuntion Gigabit ABI-EL2002S00 switch!

This hybrid injection cord is used to inject into one of the EL2002S00's three hybrid links a supplementary Telephony (or ADSL) type signal.

One RJ11 side of the cord is meant to attach to the telephony signal that is being injected, the other RJ11 side of the cord goes into the EL2002's injection port on top of the unit.

At the other end of the EL2002S00's combined link, an adapter AP1002S04 is used to separate the two signal streams (one Fast Ethernet from the EL2002S00's bus, the other Telephony from the injection port).

ONLY USE with the multifuntion Gigabit EL2002S00 switch!

L (cm): 45

0,026 kg

Individually packaged

ABI-ET2003S00

Modem-phone-fax splitter module with ADSL filter



The ABI-ET2003S00 is a passive splitter module for the distribution of analogue (PSTN) phone and ADSL signals. An external ADSL filter is no longer needed thanks to the built-in filter. This simplifies the installation and commissioning of phone, fax and ADSL modem-router. The ABI-ET2003S00 does not provide the call-confidentiality function.

Characteristics:

Line in: PSTN (and ADSL) signal on RJ45 or RJ11 (2x)

Line out:

- 3x filtered PSTN on RJ45 ports P1, P2, P3
- 1x unfiltered PSTN+ADSL on RJ45 port P4
- Dual mode phone service (phone only on P1, P2 and P3 or phone on P2 and P3 after a priority fax on P1)

Complies with:

- ISO/IEC 60603-7*, connector
- ISO/IEC 11801**, structured cabling
- EN 50173, structured cabling
- ISO/IEC 15018***, residential cabling

WxHxD (mm): 71,2x80x65

0,28 kg

Individually packaged

ABI-ET2004S00

Telephony module - 4 line splitter/combiner



This module allows the transmission of 4 individual analog or digital 2-wire phone signals over a 4-pair twisted pair cable. The 4 pairs present on an RJ45 connector (top) are split and each one sent to an RJ45 on the module's front. The module can be used in both directions, to either split or combine signals onto a single cable.

Characteristics:

Line in: PSTN and/or ADSL/VDSL on RJ45 jack (L1)

Line out on 4x RJ45 jack

P1 (4-5) = L1 (4-5)

P2 (4-5) = L1 (6-3)

P3 (4-5) = L1 (2-1)

P4 (4-5) = L1 (8-7)

Complies with:

- ISO/IEC 60603-7, connector
- ISO/IEC 11801, structured cabling
- EN 50173, structured cabling
- ISO/IEC 15018, residential cabling

WxHxD (mm): 71,2x80x65

0,28 kg

Individually packaged

ABI-AP1004S09

Shielded link splitter RJ45 jack to 4 x RJ45 jack (phone)



Splitter from one RJ45 jack to 4 RJ45 jacks. Each pair of the RJ45 jack is copied to pair 1 (pins 4&5) of the 4 RJ45 jacks. Can be used to connect four phones over a single cable link. Do not use for Ethernet, video or TV applications.

Characteristics:

- RJ45 jack to 4 x RJ45 jack (4 x phone)

Complies with:

- ISO/IEC 60603-7

WxHxD (mm): 86,4x25,7x46,1

0,058 kg

Individually packaged

ABI-MM1001S40

Smart Music - Stereo 2x20W RMS class-D DIN rail amplifier



The 2x20W RMS stereo Class D audio power amplifier provides Class AB amplifier performance with Class D efficiency. This device works from a single 14VDC supply, has click-and-pop suppression as well as short-circuit and thermal protection. The amplifier has a direct line level audio input and output on front side 3,5mm stereo jacks. Loudspeakers are connected via spring-loaded contacts on the front. The device can be connected to either a ABI-MM1002S05 Multiroom Multisource Module, to a music source via the cabled network and audio adapters ABI-MM1009S00, or directly to a music source on its stereo jack input. The gain and mute of the amplifier can be controlled either by a Smart Music RCM or by an external volume control potentiometer via the topmounted RJ45 or by a 0-10V home automation control signal on a dedicated jack.

Required power supply: ABI-PS1003S00

Characteristics:

- Line level audio input on RJ45 and 3,5mm stereo jack
- Line level audio output on 3,5mm stereo jack
- Speaker outputs on spring-loaded contacts, max 2mm²
- Output power: max 2x20W RMS into 4 Ohm loads
- Max. Gain approx 29,5dB
- Power supply voltage: 14VDC
- THD+N @ 5W, 1kHz: 0,04%
- Freq range (-3dB): 20Hz to 22kHz
- SNR approx. 90dB
- Crosstalk > 68dB (20Hz to 22kHz)
- Efficiency approx 90%
- Switching frequency (spread spectrum) :300kHz+-6kHz

Complies with:
EMI: EN55022B

WxHxD (mm): 52x80x65

0,26 kg

Individually packaged

ABI-MM1002S05

Smart Music - Multiroom Multisource Module - 5 zones



The Multiroom MultisourceModule allows you to create a simple multiroom audio system by interconnecting the music sources from different rooms with audio amplifiers in the central cabinet. Connections to the music sources and to the amplifiers are through RJ45 ports, greatly simplifying the installation work.

Characteristics:

- 5 amplifier ports on RJ45 jack
- 5 RCM ports on RJ45 jack
- 5 central stereo inputs on 3,5mm stereo jack
- 1 central stereo master output on 3,5mm stereo jack
- All inputs & outputs line level stereo
- No extra power supply required
- DIN-rail mount - 9 std positions wide

WxHxD (mm): 157x80x65

0,7 kg

Individually packaged

ABI-MM1009S00**Smart Music - Audio Adapter RJ45 to 2x 3,5mm stereo jack**

ABI-MM1009S00 is a miniature adapter that permits the transmission of two individual line level stereo signals over OmniMedia cable. The adapter is used for point-to-point or point-to-multipoint audio distribution in a Smart Media network. It can also be used as input coupler to connect a third party audio source to a multiroom multisource Smart Music network.

The adapter features an RJ45 jack on one side to connect to the wall outlet. On the other side, two stereo 3,5mm jacks connect to line level input or output ports of two independent audio interfaces.

Characteristics:

- 2 stereo line level interfaces on 3,5mm stereo jack
- Up- and/or downstream links for each port
- RJ45 plug cabling network interface

WxHxD (mm): 40x30x20

0,07 kg

Individually packaged

ABI-AV1002STR
/HQ Balanced Composite Video
SCART-RJ45 CVBS Extender kit with integrated IR-Bus devices & PC1008/DC1005 for central power supply


This Composite Video & Stereo Transmitter and Receiver kit will enable transmission of high quality analogue audio&video signals over a single Cat5/6/7 or OmniMedia cable. The balanced video transmission mode maintains very high picture quality over long lengths of cable and avoids ground loop interference problems. Bidirectional IR passthrough is implemented over the same cable link. Transmitter and Receiver have connectors for IR eye and IR flasher. The kit comes complete with following devices: one Scart>RJ45 Transmitter, one RJ45>Scart Receiver, one IR eye, one IR flasher, one 5VDC power injector RJ45-RJ45 patch cord, one 5VDC DIN-rail mounted power supply coupler.

Warning! These HQ balanced extenders are NOT compatible with ABI-AS1002S00, ABI-AS1016STR, ABI-EV1017S00 or ABI-EV1018S00.

Characteristics:
Kit contains:

- 1 pce transmitter module
- 1 pce receiver module
- 2 pcs Scart-RJ45 cord
- 1 pce power injector cord RJ-RJ
- 1 pce DINrail 5V coupler
- 1 pce IR flasher
- 1 pce IR receiver

170x90x110

0,27 kg

1 kit

ABI-AV1001STR-B1
/HQ Balanced Composite Video
SCART-RJ45 CVBS HQ Extender kit - integrated IR passthrough & 5V local power supply


This Composite Video & Stereo Transmitter and Receiver kit will enable transmission of high quality analogue audio&video signals over a single Cat5/6/7 or OmniMedia cable. The balanced video transmission mode maintains very high picture quality over long lengths of cable and avoids ground loop interference problems. Bidirectional IR passthrough is implemented over the same cable link. Transmitter and Receiver have connectors for IR eye and IR flasher. The kit comes complete with following devices: one Scart>RJ45 Transmitter, one RJ45>Scart Receiver, one IR eye, one IR flasher, one 5VDC power supply.

Warning! These HQ balanced extenders are NOT compatible with ABI-AS1002S00, ABI-AS1016STR, ABI-EV1017S00 or ABI-EV1018S00.

Required power supply: ABI-PS1001S14

Characteristics:
Kit contains:

- 1 pce transmitter module
- 1 pce receiver module
- 2 pcs Scart-RJ45 cord
- 1 pce 5VDC power supply
- 1 pce IR flasher
- 1 pce IR receiver

190x200x65

0,42 kg

ABI-AH2001STR

HDMI 1.4a Twisted Pair Transmitter+Receiver kit - integrated IR passthrough



This HDMI 1.4a compliant Transmitter and Receiver kit will enable transmission of high resolution digital audio&video signals (up to 1080p) over a single Cat5/6/7 or OmniMedia cable. The devices support the latest 3D video formats as specified in the HDMI 1.4 release. Bidirectional IR passthrough is implemented over the same cable link. Transmitter and Receiver have connectors for IR eye and flasher. The kit comes complete with both IR devices and a 5VDC power supply for each side.

Warning! NOT compatible with splitters/receivers of the ABI-AH21xx series

Characteristics:

- Supports HDMI 1.4a 3D video formats
- HDCP1.1 compliant
- 7.1 uncompressed digital audio
- 1080p@35m (no patchpanel in the link)
- 1080i/720p@50m
- Bidirectional wideband IR from 20kHz to 60kHz

Kit contains:

Transmitter, Receiver, IR Eye, IR Flasher, 2pcs 5VDC power supplies.

WxHxD(mm): 91x24x75

1 kg

1 set

ABI-PC1013Sxx

HDMI-HDMI V1.3 connection cords



High Speed HDMI connection cable compatible with HDMI 1.3 specification. Connector shielding and contacts are gold-plated for durable performance. The connector housings are overmolded onto the flexible 8mm black cable jacket.

Complies with:

- Compatible with HDMI 1.3 specification

ABI-PC1013S01: 1,0m - 0,060kg

ABI-PC1013S03: 3,0m - 0,180kg

ABI-PC1013S05: 5,0m - 0,250kg

0 kg

Individually packaged

ABI-PS1001S14

"Green" Power supply 5VDC 4A - 4 outputs - for Smart Media MODULES



5VDC-4A power supply with a daisy-chain 4-plug output power cord. The cord length between successive plugs is approximately 40cm, in order to be able to reach modules situated far away from each other in a cabinet.

The power supply has a male IEC C14 mains input and comes with a IEC C13 to EURO (pin earth) cord.

A mounting bracket which can hang off the DINrail connectors of a Smart Media system is also supplied in the package.

Required for :

ABI-EV2012S00
ABI-EV1012S00
ABI-EV1001S00
ABI-EV1017S00
ABI-EL1001S00
ABI-EL2002S00

Characteristics:

- Switchmode power supply
- Input 100-240VAC, max 1000mA, 50/60Hz
- Output 5VDC, max 4000mA
- Output by 4 connectors in daisy chain
- Supplied with mounting bracket, mains lead

Complies with:

- UL, CSA, CE, TÜV
- EN5022 Class B, Emission
- EN55022, EN550024, Safety
- IEC61000-4-2, IEC61000-4-3, Safety
- IEC61000-4-4, IEC61000-4-5, Safety
- Applicable directives : 89/336/EEC; 92/31/EEC; 73/23/EEC LVD

WxHxD (mm):90x32x46

0,365 kg

Individually packaged

ABI-PS1003S00

"Green" Power Supply 14VDC 4,7A for music amp ABI-MM1001S40



14VDC 4,7A power supply to feed Smart Music modules. Low standby power consumption and high efficiency.

Equipped with 1 connectorised low-voltage output lead.

Required for :

ABI-MM1001S40

Characteristics:

- Switchmode power supply
- Input 100-240VAC, 50/60 Hz
- Output 14VDC, max 4700mA
- Orange keyed secondary power plugs

Complies with:

- Applicable directives : 89/336/EEC; 92/31/EEC; 73/23/EEC LVD

WxHxD (mm):135x36x75

0,42 kg

Individually packaged

ABI-PE1002S00**Mains power switch for Comm Center**

Double-throw mains circuit switch with light indicator to power-off all electronic modules in the Comm Center cabinet. Can be used to activate the video test pattern and audio pilot tone the of RF modulator ABI-EV1017S00.

Characteristics:

- Double-throw 240VAC - 16A
- Light indicator
- DIN-rail mounting - 1 std position wide

Complies with:

- NBN EN 60669-1
- NBN EN 60669
- VDE 0632 deel 1
- CE

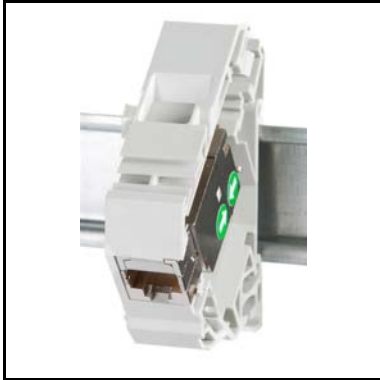
WxHxD (mm): 18x86x70

0,07 kg

Individually packaged

ABI-DC2006S00

Shielded RJ45 OmniMedia HD-Cat6 connector - DIN-rail mount



Shielded RJ45 OmniMedia HD DIN-rail mounted connector to terminate universal OmniMedia cable (eg ABI-KP1003S00) in a Comms Cabinet. Used for telephony, data, TV and audio/video applications.

The HD connector distinguishes from its predecessor by an unmatched EMC shielding efficiency throughout the UHF range, allows cable termination without dedicated tooling and the simplified colour coding reduces wiring errors.

Characteristics:

- Frequency range: 0 - 862 MHz
- Toolless installation
- Straight (180°) cable-entry rear cover

Complies with:

- ISO/IEC 60603-7, connector
- ISO/IEC 11801, structured cabling
- EN 50173, structured cabling
- ISO/IEC 15018, residential cabling

WxHxD (mm): 17,8x80x65

0,052 kg

Individually packaged

ABI-DC1001S06

Unshielded RJ45 Cat6 connector - DIN-rail mount



Unshielded RJ45 connector. Terminates UTP cables. The keystone latch mechanism maintains the connector in the DIN-rail holder. Adapted for telephony and data applications.

Characteristics:

- DIN-rail mount - 1 std position wide

Complies with:

- ISO/IEC 60603-7, connector
- ISO/IEC 11801, structured cabling
- EN 50173, structured cabling
- ISO/IEC 15018, residential cabling

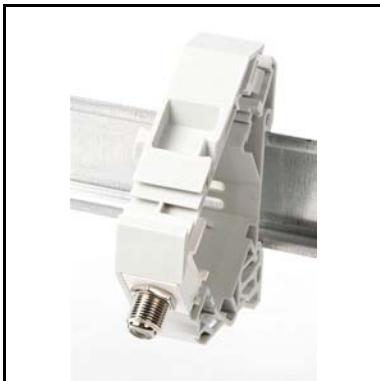
WxHxD (mm): 17,8x80x65

0,03 kg

Individually packaged

ABI-DC1003S00

F - F coax coupler - DIN-rail mount



Ensures a quick termination of connectorised coaxial cables in the Comm Center cabinet. The keystone latch mechanism maintains the connector in the DIN-rail holder. Adapted for wideband audio/video applications. Frequently used to bring coaxial ports of modules ABI-EV10xxS00 to the front panel of the Comm Center cabinet.

Characteristics:

- Frequency range: 0 - 3 GHz
- DIN-rail mount - 1 std position wide

Complies with:

- IEC61169-24 F type

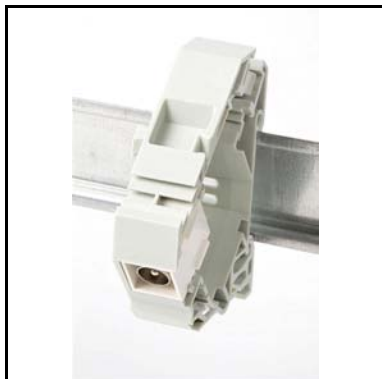
WxHxD (mm): 17,8x80x65

0,031 kg

Individually packaged

ABI-DC1004S00

IEC/M coax coupler - DIN-rail mount



Ensures a quick termination of connectorised coaxial cables in the Comm Center cabinet. Frontside IEC male connector, rear side F coax connector. The keystone latch mechanism maintains the connector in the DIN-rail holder. Adapted for wideband audio/video applications.

Characteristics:

- Frequency range: 0 - 1000 MHz
- DIN-rail mount - 1 std position wide

Complies with:

- IEC61169.2 (DIN 45325) Male
- EN 50083-2
- EN 50083-7

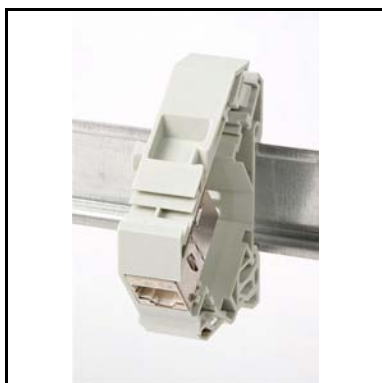
WxHxD (mm): 17,8x80x65

0,031 kg

Individually packaged

ABI-DC1009S00

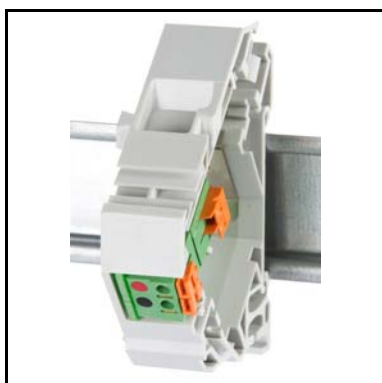
S/FTP RJ45-RJ45 coupler - DIN-rail mount



0 kg

ABI-DC3011S00

DIN rail Double Speaker Terminal with spring-loaded contacts



DIN-rail mounted speaker terminal to terminate standard speaker cable up to 2x2mm² in a DIN-rail cabinet. Perfectly suited to prewire a home for stereo or surround multiroom audio. The spring loaded contacts accept solid or stranded wires and retain good contact even in case of wire sagging.

Quick connection: strip and insert.

Characteristics:

- Rear interface: bare wire or bushing up to 2x2mm²
- Front interface: bare wire or bushing up to 2x2mm²
- Spring loaded contacts
- 1 DIN position wide
- Standard DIN-rail holder fits in cabinets like: ABI-HE10xx series, ABI-HE20xx series

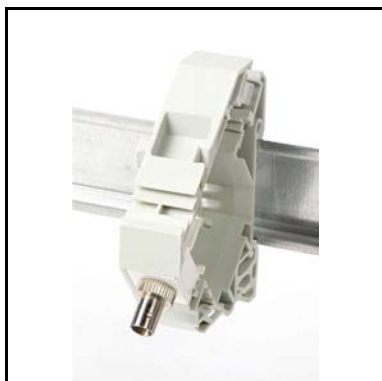
WxHxD (mm): 17,8x80x65

0,031 kg

Individually packaged

ABI-DC1011S00

F.O. Simplex ST multimode feedthrough connector - DIN-rail mount



Fiberoptics multimode simplex ST feedthrough connector. The keystone latch mechanism maintains the ST connector coupler in the DIN-rail holder. Occupies 1 standard width on the DIN-rail. The device allows quick termination of Fiber access, backbone or FTTH links in a user premise, industrial site, automation equipment, etc.

Characteristics:
- DIN-rail mount - 1 std position wide

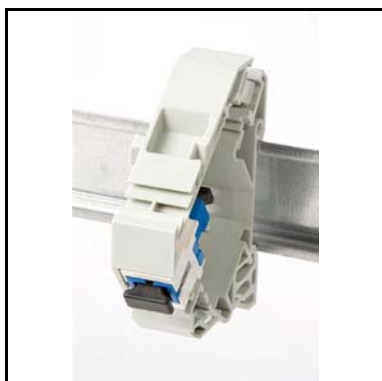
WxHxD (mm): 17,8x80x65

0,03 kg

Individually packaged

ABI-DC1012S00

F.O. Simplex SC multimode feedthrough connector - DIN-rail mount



Fiberoptics multimode simplex SC feedthrough connector. The keystone latch mechanism maintains the SC connector coupler in the DIN-rail holder. Occupies 1 standard width on the DIN-rail. The device allows quick termination of Fiber access, backbone or FTTH links in a user premise, industrial site, automation equipment, etc.

Characteristics:
- DIN-rail mount - 1 std position wide

WxHxD (mm): 17,8x80x65

0,026 kg

Individually packaged

ABI-DC1999S00-25

Sidecovers for DIN-rail connectors - bag with 25 pairs



Set comprising a right and a left cover for DIN-rail connectors of the ABI-DC1xxxS00 and ABI-DC2xxxS00 ranges. These covers can be used as dust covers to mask the lateral openings of the DIN rail connectors when they are used in other cabinets than Abitana's or on open DIN rails (eg industrial installations).

WxHxD (mm): 3,1x75x65

0,55 kg

Bag of 25 pairs

ABI-WA1010S00

Wall outlet faceplate & mounting ring for mosaic connectors - white



Faceplate and mounting ring for mosaic connectors of 45x45mm or two connectors of 22,5x45mm (eg connectors and blind plate of the ABI-WA13xx or WA23xx series).

- Characteristics:
- Plastic colour: white RAL9010
 - Cutout 45x45mm (or 2x 22,5x45mm)

WxHxD (mm): 80x80x12

0,024 kg

Individually packaged

ABI-WA2xy0S00-5

Wall outlet adapter for keystone connector - 5pcs



This adapter properly seats the OmniMedia HD RJ45 keystone jack inside the mounting frame and faceplate of the switchgear manufacturer.

Choose the right adapter for your faceplate:

- ABI-WA2100S00-5: compatible with Niko
- ABI-WA2200S00-5: compatible with bTicino Living - Black
- ABI-WA2230S00-5: compatible with bTicino Light Tech - Silver
- ABI-WA2250S00-5: compatible with bTicino Light - White
- ABI-WA2260S00-5: compatible with bTicino Axolute - White
- ABI-WA2270S00-5: compatible with bTicino Magic - Ivory
- ABI-WA2280S00-5: compatible with bTicino Axolute - Dark grey
- ABI-WA2290S00-5: compatible with bTicino Axolute - Light grey
- ABI-WA2300S00-5: compatible with Mosaic - White
- ABI-WA2320S00-5: compatible with Mosaic - Ivory
- ABI-WA2500S00-5: compatible with Euromod - Black
- ABI-WA2550S00-5: compatible with Euromod - White

0,025 kg

Bag of 5 pieces

ABI-CP2006S00

Shielded RJ45 OmniMedia HD-Cat6 connector - keystone latch



Shielded RJ45 OmniMedia HD connector to terminate universal OmniMedia cable (eg ABI-KP1003S00). Used for telephony, data, TV and audio/video applications.

The HD connector distinguishes from its predecessor by an unmatched EMC shielding efficiency throughout the UHF range, allows cable termination without dedicated tooling and the simplified colour coding reduces wiring errors.

Standard keystone latch makes it compatible with a wide variety of faceplate brands and finishes (lists available on demand) or a keystone patch panel like ABI-HE3002S24.

Characteristics:

- Frequency range: 0 - 862 MHz
- Toolless installation
- Straight or 90° cable entry
- Fits in 1HU 19" patchpanel ABI-HE3002S24

Complies with:

- ISO/IEC 60603-7, connector
- ISO/IEC 11801, structured cabling
- EN 50173, structured cabling
- ISO/IEC 15018, residential cabling

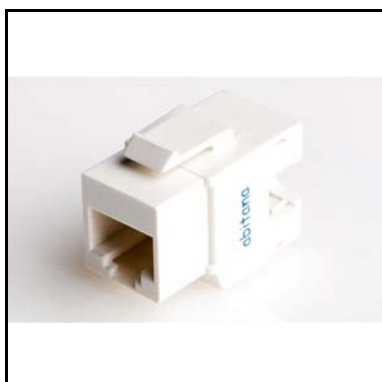
WxHxD (mm): 17,1x24,5x42,5

0,032 kg

Individually packaged

ABI-CP1001S06

RJ45 UTP Cat6 connector - keystone latch



Unshielded RJ45 connector to terminate UTP cable. Used for data and telephony applications.

Standard keystone latch makes it compatible with a wide variety of faceplate brands and finishes (lists available on demand) or a keystone patch panel like ABI-HE3002S24.

Characteristics:

- Fits in 1HU 19" patchpanel ABI-HE3002S24

Complies with:

- ISO/IEC 60603-7, connector
- ISO/IEC 11801, structured cabling
- EN 50173, structured cabling
- ISO/IEC 15018, residential cabling

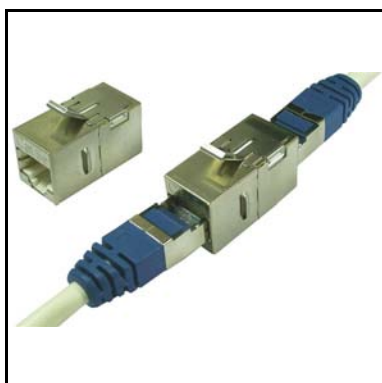
WxHxD (mm): 17,1x24x33,2

0,009 kg

Individually packaged

ABI-CP1009S00

Shielded RJ45 to RJ45 Cat5e coupler - keystone latch



Shielded RJ45 jack to RJ45 jack coupler which allows quick interconnection of RJ45 patchcords to extend the reach of a temporary or semi-permanent connection.

Standard keystone latch makes it compatible with a wide variety of faceplate brands and finishes (lists available on demand) or a keystone patchpanel like ABI-HE3002S24.

Characteristics:

- Cat5e FTP/STP RJ45 feedthrough coupler
- Fits in 1HU 19" patchpanel ABI-HE3002S24

WxHxD (mm): 17,3x25x33,2

0,01 kg

Individually packaged

ABI-CX1003S00**F to F coax coupler - keystone latch**

F - F coax coupler in a keystone mounting frame.

Standard keystone latch makes it compatible with a wide variety of faceplate brands and finishes (lists available on demand) or a keystone patch panel like ABI-HE3002S24.

Characteristics:

- Frequency range: 0 - 3 GHz
- Fits in 1HU 19" patchpanel ABI-HE3002S24

Complies with:

- IEC61169-24 F type

WxHxD (mm): 13,9x21,4x29,7

0,008 kg

Individually packaged

ABI-CX1004S00**IEC/M to F coax coupler - keystone latch**

IEC male - F coax coupler in a keystone mounting frame. Standard keystone latch makes it compatible with a wide variety of faceplate brands and finishes (lists available on demand) or a keystone patch panel like ABI-HE3002S24.

Characteristics:

- Frequency range: 0 - 1000 MHz
- Fits in 1HU 19" patchpanel ABI-HE3002S24

Complies with:

- IEC61169.2 (DIN 45325)
- IEC61169-24 F type

WxHxD (mm): 16,7x21,4x31,4

0,009 kg

Individually packaged

ABI-CF1011S00**ST to ST multimode fiber coupler - keystone latch**

Fiber optics simplex ST multimode feedthrough connector in a keystone bezel holder.

The device allows quick termination of fiber access, backbone or FTTH links in a user premise, industrial site, automation equipment, etc.

Standard keystone latch makes it compatible with a wide variety of faceplate brands and finishes (lists available on demand) or a keystone patch panel like ABI-HE3002S24.

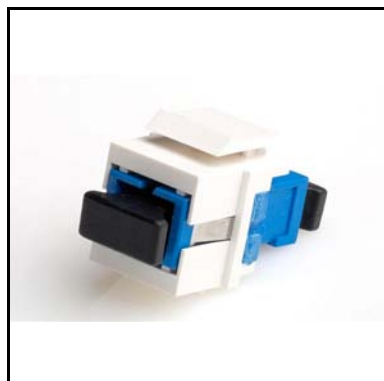
Characteristics:

- Fits in 1HU 19" patchpanel ABI-HE3002S24

WxHxD (mm): 13,9x21,4x29,7

0,009 kg

Individually packaged

ABI-CF1012S00**SC to SC multimode fiber coupler - keystone latch**

Fiber optics multimode simplex SC feedthrough connector in a keystone bezel holder. The device allows quick termination of fiber access, backbone or FTTH links in a user premise, industrial site, automation equipment, etc. Standard keystone latch makes it compatible with a wide variety of faceplate brands and finishes (lists available on demand) or a keystone patch panel like ABI-HE3002S24.

Characteristics:
- Fits in 1HU 19" patchpanel ABI-HE3002S24

WxHxD (mm): 13,9x21,4x29,7

0,009 kg

Individually packaged

ABI-CX1002S00-25**Coaxial male F crimp-on connector - 25pcs**

Coaxial male F connector to terminate ABI-KX1002S00 coax cable with crimp tool ABI-TA1005S00.

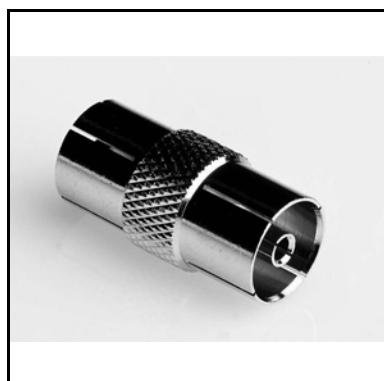
Characteristics:
Use an appropriate crimping tool, hexagonal die size 8,23mm or 0,324"

Complies with:
- IEC61169-24 F type

Diam.xL(mm): 11x19,3

0,102 kg

Bag of 25pcs

ABI-CX1005S00-25**Coaxial inline adapter - IEC/F to IEC/F - 25pcs**

Inline coax adapter to convert from IEC male to IEC female interface.

Complies with:
- IEC61169.2 (DIN 45325)

0 kg

Bag of 25 pcs

ABI-AP1002Sxx**Shielded link splitter RJ45 plug to 2x RJ45 jack**

Allows the shared use of one 4-pair cable link between two separate applications. A unit of the same type is required at both ends of the cable link.

Characteristics:
- RJ45 plug to 2 x RJ45 jack

Complies with:
- ISO/IEC 60603-7

ABI-AP1002S01: Data+Data (Ethernet+Ethernet)
ABI-AP1002S04: Phone + Data (Ethernet)
ABI-AP1002S05: Phone + Phone

WxHxD (mm): 148x25,7x45

0,039 kg

Individually packaged

ABI-AP1004S08**Shielded link splitter RJ45 jack to 4 x RJ45 jack**

Splitter from one RJ45 jack to 4 RJ45 jacks. All pins of the RJ45 jack are copied 1 to 1 to the pins of the four RJ45 jacks. Can be used to put several high impedance devices in parallel. Do not use for Ethernet, video or TV applications.

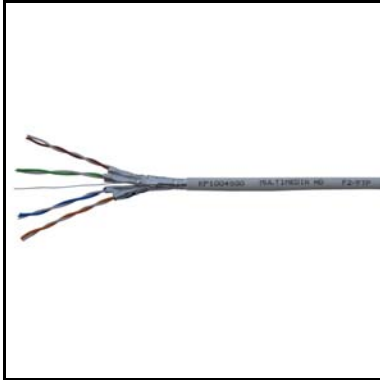
Characteristics:
- RJ45 jack to 4 x RJ45 jack
- Alle pins copied 1 on 1

Complies with:
- ISO/IEC 60603-7

WxHxD (mm): 86,4x25,7x46,1

0,058 kg

Individually packaged

ABI-KP1004S00x**OmniMedia C6-HD F2/FTP installation cable**

Superior triple-shield 4 pair installation cable optimised for home networking use. The design has been optimised to work seamlessly with OmniMedia HD RJ45 connectors and HD patch cords, essential to give the added comfort of a total system applications guarantee.

Compatible with CableTV DVB-C and DVB-T standards, with HDMI and AV equipment from the major vendors, with Gigabit Ethernet data signals and with all residential analog and digital telephony signals.

Very low skew between the pairs gives extra margin for Gigabit Ethernet and for HDMI-3D distribution at 1080p and above.

Reduced diameter and bending radius facilitate cable laying and termination in wall boxes. Can also be delivered in flex tube of 16mm O.D. Under partnumbers ABI-KP1004S1xx.

Characteristics:

- F2/FTP construction, 9/12/9µ double outer aluminium RF foil
- Halogen free construction (LSZH)
- Category 6: IEC 61156-5, EN 50288-5-1, EIA/TIA 568
- Class E permanent link: ISO/IEC 11801 (2-2009), EN 50173-1 (2009)
- Impedance@100MHz: 100 Ohm+/- 15%
- Propagation velocity@10MHz: 0,79°C (NVP°C)
- Propagation Delay@10MHz: 4,3 ns/m
- Delay Skew: 4 ns/35m
- Coupling attenuation: better than 75dB
- Outer jacket: White (RAL9010) LSZH material
- Operating temp.: -20°C to +60°C
- Installation temp.: 0°C to +50°C
- Minimum bend radius: >= 60mm
- Max tensile strength: 100N
- Outer diameter: 7,2mm nominal
- Weight: 48kg/km

Complies with:

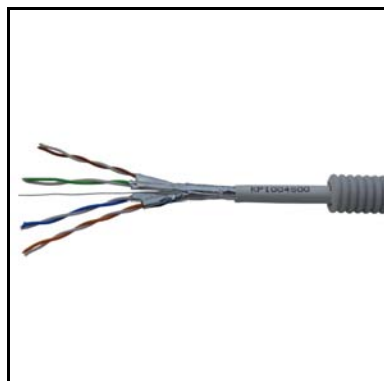
- TV Shielding Efficiency: EN50083 Class C
- Interference Radiation: EN 55022 Class B
- Electro Magnetic Immunity: EN 55024
- Flame Retardancy: IEC 60332-3-24, EN50266-4
- Non-corrosiveness: IEC60754-2, EN50267
- Low Smoke emission: IEC61034, EN50268

ABI-KP1004S001: 100m spool - 4,8kg
 ABI-KP1004S003: 333m reel - 17,8kg
 ABI-KP1004S005: 500m reel - 27kg

0 kg

ABI-KP1004S10x

OmniMedia C6-HD F2/FTP installation cable in flextube



Corrugated 16mm O.D. Flex tube pre-equipped with superior triple-shield 4 pair installation cable optimised for home networking use. The design has been optimised to work seamlessly with OmniMedia HD RJ45 connectors and OmniMedia HD patch cords, essential to give the added comfort of a total system applications guarantee. Compatible with CableTV DVB-C and DVB-T standards, with HDMI and AV equipment from the major vendors, with Gigabit Ethernet data signals and with all residential analog and digital telephony signals. Very low skew between the pairs gives extra margin for Gigabit Ethernet and for HDMI-3D distribution at 1080p and above. Reduced diameter and bending radius facilitate cable laying and termination in wall boxes.

Characteristics:

- F2/FTP construction, 9/12/9µ double outer aluminium RF foil
- Halogen free construction (LSZH)
- Category 6: IEC 61156-5, EN 50288-5-1, EIA/TIA 568
- Class E permanent link: ISO/IEC 11801 (2-2009), EN 50173-1 (2009)
- Impedance@100MHz: 100 Ohm+/- 15%
- Propagation velocity@10MHz: 0,79°C (NVP°C)
- Propagation Delay@10MHz: 4,3 ns/m
- Delay Skew: 4 ns/35m
- Coupling attenuation: better than 75dB
- Outer jacket: White (RAL9010) LSZH material
- Operating temp.: -20°C to +60°C
- Installation temp.: 0°C to +50°C
- Minimum bend radius: >= 60mm
- Max tensile strength: 100N
- Outer diameter: 7,2mm nominal
- Tube outer diam: 16mm nominal
- Weight: 90kg/km

Complies with:

- TV Shielding Efficiency: EN50083 Class C
- Interference Radiation: EN 55022 Class B
- Electro Magnetic Immunity: EN 55024
- Flame Retardancy: IEC 60332-3-24, EN50266-4
- Non-corrosiveness: IEC60754-2, EN50267
- Low Smoke emission: IEC61034, EN50268

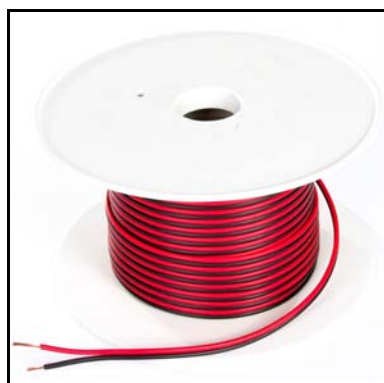
ABI-KP1004S101: 100m spool - 9kg

ABI-KP1004S102: 250m reel - 30kg

0 kg

ABI-KS3001S15-100

Speaker cable 2x 1,5mm² - Red/Black - 100m



Multistrand flexible loudspeaker cable. Red and Black insulated wires can easily be separated.

Characteristics:

- Multistrand flexible conductors
- PVC insulation
- Red & Black insulation
- 2x 1,5mm² conductor crossection

5 kg

L= 100m spool

ABI-KX1002S00-xxx**Tri-shield wideband coax cable**

Tri-shield wideband RG6-type coax cable, with high screening efficiency and low loss, particularly suited for TV and SAT aerial links. Can be terminated with ABI-CX1002S00 coax crimpable connector.

Characteristics:

- Frequency range: 0 - 2,5 GHz
- RG6 type, PVC jacket
- Triple high efficiency shielding, 60% braid
- Low attenuation

Complies with:

- ISO/IEC 15018

ABI-KX100200-050	Spool 50m	2,8kg
ABI-KX1002S00-305	Reel 305m	18,0kg

Diam.(mm): 7,1

kg

ABI-HE2001Sxx

Xpress multifunctional cabinets - 35cm wide - with plexi door



Comm Center cabinet in polymer for wall surface mounting or partially recessed mounting. Fitted with DIN-rails, frontpanel and smoked transparent door. Suitable for small to medium size projects. On the -S22, -S33, -S44 models the frontpanels and side cover of the cabinet can be removed while patch cords stay in place, facilitating add-ons and changes with the system up and running.

Characteristics:

- Colour: RAL 7035
- Cabling depth: 30mm
- Patch depth: 45mm
- Removable front frame
- Removable coverplates
- Smoked plexi front door

Complies with:

- EN 60493-3
- IP40-7

ABI-HE2001S22: 2 DIN rails - 36 DIN positions - 355x450x142mm - 3,5kg

ABI-HE2001S33: 3 DIN rails - 54 DIN positions - 355x600x142mm - 4,5kg

ABI-HE2001S44: 4 DIN rails - 72 DIN positions - 355x750x142mm - 5,5kg

kg

ABI-HE2001Sxy

Xpress multifunctional cabinets - 35cm wide - with mounting board & plexi door



Comm Center cabinet in polymer for wall surface mounting or partially recessed mounting. Fitted with DIN-rails, frontpanel and smoked transparent door. Suitable for small to medium size projects. On the -S13 and -S24 models a 340x340mm mounting board is provided to mount third-party equipment like routers, switches, amplifiers, etc.

Characteristics:

- Colour: RAL 7035
- Cabling depth: 30mm
- Patch depth: 45mm
- Removable front frame
- Removable coverplates
- Smoked plexi front door
- Mounting board 340x340mm

Complies with:

- EN 60493-3
- IP40-7

ABI-HE2001S13: 1 DIN rail - 18 DIN positions - 355x600x142mm - 4,5kg

ABI-HE2001S24: 2 DIN rails - 36 DIN positions - 355x750x142mm - 5,5kg

kg

ABI-HE1004Sxx

Xpert metal surface mount cabinet



Comm Center cabinet in metal for wall surface mounting.
Fitted with DIN-rails, frontpanel and smoked transparent door.
Suitable medium to large home projects.

Characteristics:
- Colour: RAL 7035
- Cabling depth: 45mm
- Patch depth: 85mm

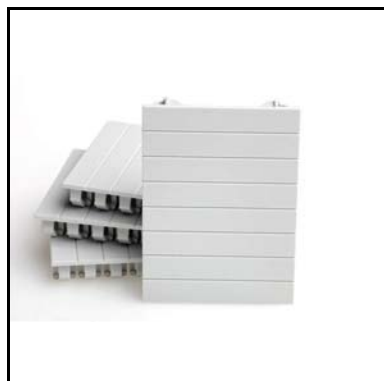
Complies with:
- IP41-7

ABI-HE1004S04: 4 DIN rails - 96 DIN positions - 550x650x215mm - 14,5kg
ABI-HE1004S05: 5 DIN rails - 120 DIN positions - 550x800x215mm - 17,5kg
ABI-HE1004S06: 6 DIN rails - 144 DIN positions - 550x950x215mm - 20,0kg

kg

ABI-HE1090S04

Cabinet blind plate - 4 DIN positions - pack of 4



Blind plate to cover spare positions in a Comm Center cabinet. A blindplate can be split into 4 pieces, each one DIN position wide.

Characteristics:
- 4 DIN positions wide
- Can be split in 4 pieces, 1 DIN position each

WxHxD(mm): 71,6x52x11

0,042 kg

Bag of 4pcs

ABI-HE3001S00

19 inch 3HU mounting frame with internal DIN-rail



19" 3HU mounting frame fitted with an internal 22 position DIN-rail. Allows the use of DIN-rail based electronic modules and connectors in 19" cabinets and racks. The front panel can be removed independently from the chassis to allow quick changes to the system composition.

- Characteristics:
- 22 positions DIN-rail
 - Painted steel finish
 - Independently removable frontpanel

WxHxD(mm): 485x134x70

1,1 kg

Individually packaged

ABI-HE3002S24

19 inch 1HU empty patchpanel for 24 keystone connectors



19" 1HU empty patch panel for up to 24 keystone type connectors. The panel can be used to create a customised combination of RJ45 jacks, coaxial couplers and fiber couplers. Each panel is supplied with a pre-drilled rear-mounted bracket to bind the installation cables with a tie-wrap.

- Characteristics:
- 24 keystone positions
 - Painted steel, black finish
 - Removable rear-mounted cable bracket

WxHxD(mm): 485x44x75

0,8 kg

Individually packaged

ABI-HE3004S00

19 inch 1HU Ring Run Patch cord organiser



19" 1HU panel fitted with metal organiser rings. Patch cords can be neatly routed from a patch panel to the side of the cabinet and then back to another patch panel or an active device.

WxHxD(mm): 485x44x60

0,41 kg

Individually packaged

ABI-PC1002Sxx

Shielded OmniMedia patch cord for Comm Center



Shielded universal OmniMedia patch cord that is used in the Comm Center cabinet. Used for data (up to Gigabit Ethernet), telephony and wideband Audio/Video/TV.

Characteristics:

- RJ45 plug to RJ45 plug
- Frequency range: 0 - 862 MHz
- High-grade shielding

Complies with:

- ISO/IEC 60603-7
- ISO/IEC 11801
- ISO/IEC 15018

ABI-PC1002S45: 45cm - 0,030kg

ABI-PC1002S60: 60cm - 0,034kg

ABI-PC1002S75: 75cm - 0,040kg

kg

Individually packaged

ABI-PC1001Sxx

Unshielded RJ45-RJ45 patch cord for Comm Center



Unshielded patch cord that is used in the Comm Center cabinet. Used for data (up to Gigabit Ethernet) and telephony.

Characteristics:

- RJ45 plug to RJ45 plug
- Frequency range: 0 - 250 MHz

Complies with:

- ISO/IEC 60603-7
- ISO/IEC 11801
- ISO/IEC 15018

ABI-PC1001S45: 45cm - 0,026kg

ABI-PC1001S60: 60cm - 0,032kg

ABI-PC1001S75: 75cm - 0,036kg

kg

Individually packaged

ABI-PC1003Sxx

Coax F - F patch cord for Comm Center cabinet



Coax F-F patch cord that is used in the Comm Center cabinet for CaTV, video and satellite applications.

Characteristics:

- F male to F male connector
- Frequency range: 0 - 3 GHz
- High-grade shielding

ABI-PC1003S45: 45cm - 0,043kg

ABI-PC1003S60: 60cm - 0,044kg

ABI-PC1003S75: 75cm - 0,045kg

kg

Individually packaged

ABI-PC1012Sxx
Shielded OmniMedia RJ45 - RJ45 connection cord


Shielded universal OmniMedia connection cord. Used for data (up to Gigabit Ethernet), telephony and wideband Audio/Video/TV.

Characteristics:

- RJ45 plug to RJ45 plug
- Frequency range: 0 - 862 MHz
- High-grade shielding

Complies with:

- ISO/IEC 60603-7
- ISO/IEC 11801
- ISO/IEC 15018

ABI-PC1012S01: 1,5m - 0,074kg

ABI-PC1012S03: 3,0m - 0,131kg

ABI-PC1012S05: 5,0m - 0,221kg

kg

Individually packaged

ABI-PC1004Sxx
Unshielded RJ45 - RJ45 connection cord for phone & data


Unshielded twisted pair connection cord for data (up to Gigabit Ethernet) and telephony applications

Characteristics:

- RJ45 plug to RJ45 plug
- Frequency range: 0 - 250 MHz

Complies with:

- ISO/IEC 60603-7
- ISO/IEC 11801
- ISO/IEC 15018

ABI-PC1004S01: 1,5m - 0,063kg

ABI-PC1004S03: 3,0m - 0,112kg

ABI-PC1004S05: 5,0m - 0,179kg

kg

Individually packaged

ABI-PC1005Sxx
Unshielded RJ45 - RJ11 connection cord


Unshielded 2-pair RJ45 - RJ11 connection cord for fax, modem and phone.

Characteristics:

- RJ45 plug to RJ11 plug
- Frequency range: 0 - 250 MHz

Complies with:

- ISO/IEC 60603-7
- ISO/IEC 11801
- ISO/IEC 15018

ABI-PC1005S01: 1,5m - 0,063kg

ABI-PC1005S03: 3,0m - 0,112kg

ABI-PC1005S05: 5,0m - 0,179kg

kg

Individually packaged

ABI-PC1006Sxx**IEC coax connection cord for TV, video and radio**

Wideband coaxial cord to connect a TV set, videorecorder or tuner's antenna input.

Characteristics:

- IEC male to IEC female connector
- Frequency range: 0 - 1000 MHz

Complies with:

- IEC61169.2 (DIN 45325)

ABI-PC1006S01: 1,5m - 0,063kg

ABI-PC1006S03: 3,0m - 0,112kg

ABI-PC1006S05: 5,0m - 0,179kg

kg

Individually packaged

ABI-TA1001S00

IDC tool to mount twisted pair connectors



Economic handheld tool to insert the wires of twisted pair cables in the IDC contacts of RJ45 connectors.

Characteristics:
Used for twisted pair connectors of series:
- ABI-CP1001S06
- ABI-DC1001S06

WxHxD(mm): 40x103x5

0,008 kg

Individually packaged

ABI-TA1002S00

Wire Cutting Pliers to mount twisted pair connectors



Economic cutters to trim the wires of twisted pair cables.

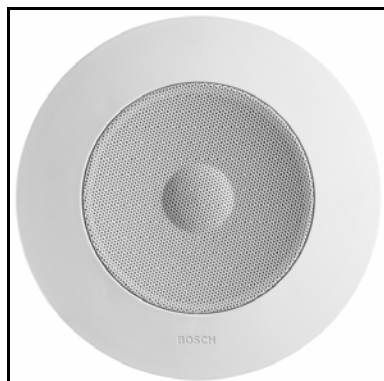
WxHxD(mm): 68x128x12

0,08 kg

Individually packaged

ABI-LSECO4SRO

ECO4 RO In-ceiling/wall round wetroom speaker - 4"



The ECONomic 4 RO is a compact round 9 Watt RMS ceiling or panel loudspeaker with excellent audio performance at an unbeatable price/performance ratio.

The clear sound image makes it ideal for areas with lots of background noise. The loudspeaker is IPx4 water protected from the front, making it suited for humid environments like kitchen, bathroom, atrium and swimming pool.

It is easy to install with its integral mounting clips and is finished in an attractive off-white color. The discrete styling of this loudspeaker complements today's interior lighting.

Characteristics:

- Maximum power: 9 Watt RMS
- Efficiency (at 1W, 1 kHz, 1 m): 88 dB
- Frequency range: 90 Hz to 18 kHz
- Rated impedance: 4 Ohm
- Woofer: 4" impregnated paper cone
- Spring-loaded terminals
- Metal grille
- Color off-white (RAL 9010)
- Dimensions (mm): diam. 160 - Weight: 670g
- Mounting cutout (mm): 145
- Mounting depth (mm): 60
- Self-adjusting mounting clips
- Relative humidity: <95%

Diam x D (mm): 160x60

0,75 kg

Individually packaged

ABI-LSEVO4SOD

EVO4 OD Cabinet speaker - weatherproof - 4" - 2way



The EVOLution 4 OD are premium sound cabinet loudspeakers, two-way systems with woofer and tweeter, intended for clear reproduction of speech or foreground and background music to be used for indoor and outdoor applications. The loudspeakers are available in a dark (default choice) or light color (special request) and have selectable 8 ohm, 70 V and 100 V inputs.

Typical applications are waiting room, hall, study, patio, wintergarden, home office, fitness centre, showroom, etc.

The cabinets can be mounted horizontally to allow the loudspeaker to be directed up or down, or vertically to allow left and right rotation by means of a steel U-shaped wall bracket (standard supplied).

Characteristics:

- Maximum power: 15 W RMS
- Efficiency: (at 1W, 1 kHz, 1 m): 86dB
- Nominal impedance 8 Ohm
- Frequency range: 95 Hz to 20 kHz
- Woofer: 4"cone
- Tweeter: 0,5" dome
- Gold-plated screw terminals
- Metal grille
- Color: black
- Dimensions (mm): diam 136x205x117 - Weight: 1900g
- Mounted horizontally or vertically with supplied bracket
- Relative humidity: <95%

WxHxD (mm): 136x205x117

2 kg

Individually packaged

ABI-LSEVO5SRO

EVO5 RO In-Wall/Ceiling round speaker - 5,25"- 2way



The EVOLution 5 RO are premium two-way systems with rigid PolyPropylene cone woofers and high-power 0,5" Mylar dome tweeters. These speakers surprise by the powerfull precise bass and silky smooth midrange and highs. These nice allrounders will never tire either as background music or as surround sound speakers.

Typical applications are in lounge, dining room, kitchen, bedroom. The round design makes a nice fit with a majority of circular light fixtures, the frame and grilles can be painted to match the ceiling or walls or to provide a challenging spot of color.

The units are easy to mount by the self-pivoting clamp dogs.

Connection to the speaker cables is done through spring-loaded terminals.

Characteristics:

- Maximum power: 35 W RMS
- Efficiency: (at 1W, 1 kHz, 1 m): 90dB
- Nominal impedance 8 Ohm
- Frequency range: 65 Hz to 20 kHz
- Woofer: 5,25" PolyPropylene (PP) cone, Rubber edge
- Tweeter: 0,5" Mylar dome
- Filter 6dB/Oct
- Spring-loaded terminals
- Metal grille
- Color: white - Paintable
- Dimensions (mm): diam 204
- Mounting cutout (mm) diam. 175
- Depth (mm): 75
- Fast-mounting self-pivoting clamp dogs

Diam. X D (mm) diam. 204x75

1,27 kg

Individual package

ABI-LSEVO5SSQ

EVO5 SQ In-Wall/Ceiling square speaker - 5,25"- 2way



The EVOLution 5 SQ are premium two-way systems with rigid PolyPropylene cone woofers and high-power 0,5" Mylar dome tweeters. These speakers surprise by the powerfull precise bass and silky smooth midrange and highs. These nice allrounders will never tire either as background music or as surround sound speakers.

Typical applications are in lounge, dining room, kitchen, bedroom. The stylish square design makes a nice fit with a majority of modern light fixtures and straight-lined sober interiors, the frame and grilles can be painted to match the walls or to provide a challenging spot of color.

The units are easy to mount by the self-turning mounting dogs.

Connection to the speaker cables is done through spring-loaded terminals.

Characteristics:

- Maximum power: 35 W RMS
- Efficiency: (at 1W, 1 kHz, 1 m): 90dB
- Nominal impedance 8 Ohm
- Frequency range: 65 Hz to 20 kHz
- Woofer: 5,25" PolyPropylene (PP) cone, Rubber edge
- Tweeter: 0,5" Mylar dome - Orientable
- Filter 6dB/Oct
- Spring-loaded terminals
- Metal grille
- Color: white - Paintable
- Dimensions (mm): square 180x180
- Mounting cutout (mm): square 145x145
- Depth (mm): 75
- Fast-mounting self-pivoting clamp dogs

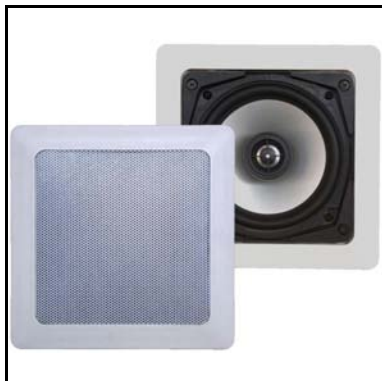
HxWxD (mm): 180x180x75

1,27 kg

Individual package

ABI-LSEMO5SSQ

EMO5 SQ In-Wall/Ceiling square speaker - 5,25" - 2way



The EMotion 5 SQ are premium two-way systems with very rigid 5,25" aluminium cone woofers and high-power 0,75" ferrofluid cooled aluminium dome tweeters. These speakers combine precise dry bass with incredible openness in the midrange and crystal-clear highs. They excell by bringing every musical detail to life and by the precise spatial positioning in both low and high volume situations. Power and accuracy at an incredible price, but no compromise to quality.

Typical applications are home theater, lounge, dining room, large kitchen, master bedroom. The stylish square design makes a nice fit with a majority of modern light fixtures and straight-lined sober interiors, the frame and grilles can be painted to match the walls or to provide a challenging spot of color.

The units are easy to mount by the self-turning mounting dogs.

Connection to the speaker cables is done through heavy gold-plated spring-loaded terminals.

Characteristics:

- Maximum power: 40 W RMS
- Efficiency: (at 1W, 1 kHz, 1 m): 88dB
- Nominal impedance 8 Ohm
- Frequency range: 60 Hz to 20 kHz
- Woofer: 5,25" Aluminium cone, Rubber edge
- Tweeter: 0,75" Aluminium dome - Orientable
- Filter 12dB/Oct
- Spring-loaded gold-plated terminals
- Metal grille
- Color: white - Paintable
- Dimensions (mm): square 180x180
- Mounting cutout (mm): square 145x145
- Depth (mm): 75
- Fast-mounting self-pivoting clamp dogs

LxWxD (mm): 180x180x75

1,34 kg

Individual package

ABI-LSEMO6SRO

EMO6 RO In-Wall/Ceiling round speaker - 6,5" - 2way



The EMotion 6 RO are premium two-way systems with very rigid 6,5" aluminium cone woofers and high-power 0,75" ferrofluid cooled aluminium dome tweeters. These speakers combine precise dry bass with incredible openness in the midrange and crystal-clear highs. They excell by bringing every musical detail to life and by the precise spatial positioning in both low and high volume situations. Power and accuracy at an incredible price, but no compromise to quality.

Typical applications are home theater, lounge, dining room, large kitchen, master bedroom. The round design makes a nice fit with a majority of circular light fixtures, the frame and grilles can be painted to match the ceiling or walls or to provide a challenging spot of color.

The units are easy to mount by the self-turning mounting dogs.

Connection to the speaker cables is done through heavy gold-plated spring-loaded terminals.

Characteristics:

- Maximum power: 45 W RMS
- Efficiency: (at 1W, 1 kHz, 1 m): 88dB
- Nominal impedance 8 Ohm
- Frequency range: 60 Hz to 20 kHz
- Woofer: 6,50" Aluminium cone, Rubber edge
- Tweeter: 0,75" Aluminium dome - Orientable
- Filter 12dB/Oct
- Spring-loaded gold-plated terminals
- Metal grille
- Color: white - Paintable
- Dimensions (mm): diam 240 - Weight: 1700g
- Mounting cutout (mm): diam 208
- Depth (mm): 75
- Fast-mounting self-pivoting clamp dogs

Diam.x D (mm): 240x75

1,7 kg

Individual package

Index

product number		page
ABI-AC1002S00	Balun for FM-VHF-UHF, fixed gain	3
ABI-AC1003S00	Adapter for Composite Video signal	7
ABI-AC2001S00	Hybrid TV+FM+10/100bT+phone adapter, with gain adjustment (CS)	3
ABI-AH2001STR	HDMI 1.4a Twisted Pair Transmitter+Receiver kit - integrated IR passthrough	14
ABI-AP1002Sxx	Shielded link splitter RJ45 plug to 2x RJ45 jack	24
ABI-AP1004S08	Shielded link splitter RJ45 jack to 4 x RJ45 jack	24
ABI-AP1004S09	Shielded link splitter RJ45 jack to 4 x RJ45 jack (phone)	10
ABI-AS1016STR	SCART/RJ45 input-output adapter for ABI-EV1017S00	6
ABI-AV1001STR-B1	SCART-RJ45 CVBS HQ Extender kit - integrated IR passthrough & 5V local power supply	13
ABI-AV1002STR	SCART-RJ45 CVBS Extender kit with integrated IR-Bus devices & PC1008/DC1005 for central p	13
ABI-AX1001S02	Coax 2-way splitter (-4dB) with F connectors	5
ABI-CF1011S00	ST to ST multimode fiber coupler - keystone latch	22
ABI-CF1012S00	SC to SC multimode fiber coupler - keystone latch	23
ABI-CP1001S06	RJ45 UTP Cat6 connector - keystone latch	21
ABI-CP1009S00	Shielded RJ45 to RJ45 Cat5e coupler - keystone latch	21
ABI-CP2006S00	Shielded RJ45 OmniMedia HD-Cat6 connector - keystone latch	21
ABI-CX1002S00-25	Coaxial male F crimp-on connector - 25pcs	23
ABI-CX1003S00	F to F coax coupler - keystone latch	22
ABI-CX1004S00	IEC/M to F coax coupler - keystone latch	22
ABI-CX1005S00-25	Coaxial inline adapter - IEC/F to IEC/F - 25pcs	23
ABI-DC1001S06	Unshielded RJ45 Cat6 connector - DIN-rail mount	17
ABI-DC1003S00	F - F coax coupler - DIN-rail mount	17
ABI-DC1004S00	IEC/M coax coupler - DIN-rail mount	18
ABI-DC1009S00	S/FTP RJ45-RJ45 coupler - DIN-rail mount	18
ABI-DC1011S00	F.O. Simplex ST multimode feedthrough connector - DIN-rail mount	19
ABI-DC1012S00	F.O. Simplex SC multimode feedthrough connector - DIN-rail mount	19
ABI-DC1999S00-25	Sidecovers for DIN-rail connectors - bag with 25 pairs	19
ABI-DC2006S00	Shielded RJ45 OmniMedia HD-Cat6 connector - DIN-rail mount	17
ABI-DC3011S00	DIN rail Double Speaker Terminal with spring-loaded contacts	18
ABI-EL1001S00	Fast Ethernet Switch - 5 ports 10/100bT - DIN-rail	8
ABI-EL2002S00	Gigabit Ethernet Switch - 8 ports 10/100/1000bT - DIN-rail	8
ABI-ET2003S00	Modem-phone-fax splitter module with ADSL filter	10
ABI-ET2004S00	Telephony module - 4 line splitter/combiner	10
ABI-EV1001S00	Wideband 4 ports coax TV/Radio AERIAL preamplifier	4
ABI-EV1012S00	Twisted Pair wideband 4 ports TV/Radio amplifier - 2 inputs	4
ABI-EV1017S00	4-channel Audio/Video modulator with IR-Bus	6
ABI-EV1017SPK	Programming kit for the ABI-EV1017S00 VHF/UHF modulator	6
ABI-EV2012S00	Home TV Gateway - RF Broadband, Sat, IP, xDSL - 4port Master	1
ABI-EV2013S00	Home TV Gateway - RF Broadband, IP, xDSL - 4 port Slave	2
ABI-EV2014S00	Home TV Gateway - RF Broadband - 4 port Slave	2
ABI-HE1004Sxx	Xpert metal surface mount cabinet	29
ABI-HE1090S04	Cabinet blind plate - 4 DIN positions - pack of 4	29
ABI-HE2001Sxx	Xpress multifunctional cabinets - 35cm wide - with plexi door	28
ABI-HE2001Sxy	Xpress multifunctional cabinets - 35cm wide - with mounting board & plexi door	28
ABI-HE3001S00	19 inch 3HU mounting frame with internal DIN-rail	30
ABI-HE3002S24	19 inch 1HU empty patchpanel for 24 keystone connectors	30
ABI-HE3004S00	19 inch 1HU Ring Run Patch cord organiser	30
ABI-KP1004S00x	OmniMedia C6-HD F2/FTP installation cable	25
ABI-KP1004S10x	OmniMedia C6-HD F2/FTP installation cable in flextube	26

Index

product number		page
ABI-KS3001S15-100	Speaker cable 2x 1,5mm ² - Red/Black - 100m	26
ABI-KX1002S00-xxx	Tri-shield wideband coax cable	27
ABI-LSECO4SRO	ECO4 RO In-ceiling/wall round wetroom speaker - 4"	35
ABI-LSEMO5SSQ	EMO5 SQ In-Wall/Ceiling square speaker - 5,25" - 2way	37
ABI-LSEMO6SRO	EMO6 RO In-Wall/Ceiling round speaker - 6,5" - 2way	37
ABI-LSEVO4SOD	EVO4 OD Cabinet speaker - weatherproof - 4" - 2way	35
ABI-LSEVO5SRO	EVO5 RO In-Wall/Ceiling round speaker - 5,25" - 2way	36
ABI-LSEVO5SSQ	EVO5 SQ In-Wall/Ceiling square speaker - 5,25" - 2way	36
ABI-MM1001S40	Smart Music - Stereo 2x20W RMS class-D DIN rail amplifier	11
ABI-MM1002S05	Smart Music - Multiroom Multisource Module - 5 zones	11
ABI-MM1009S00	Smart Music - Audio Adapter RJ45 to 2x 3,5mm stereo jack	12
ABI-PC1001Sxx	Unshielded RJ45-RJ45 patch cord for Comm Center	31
ABI-PC1002Sxx	Shielded OmniMedia patch cord for Comm Center	31
ABI-PC1003Sxx	Coax F - F patch cord for Comm Center cabinet	31
ABI-PC1004Sxx	Unshielded RJ45 - RJ45 connection cord for phone & data	32
ABI-PC1005Sxx	Unshielded RJ45 - RJ11 connection cord	32
ABI-PC1006Sxx	IEC coax connection cord for TV, video and radio	33
ABI-PC1012Sxx	Shielded OmniMedia RJ45 - RJ45 connection cord	32
ABI-PC1013Sxx	HDMI-HDMI V1.3 connection cords	14
ABI-PC2002S01	Hybrid injection cord Data-Data (for switch ABI-EL2002S00)	9
ABI-PC2002S04	Hybrid injection cord Data-Telephone (for switch ABI-EL2002S00)	9
ABI-PE1002S00	Mains power switch for Comm Center	16
ABI-PS1001S14	"Green" Power supply 5VDC 4A - 4 outputs - for Smart Media MODULES	15
ABI-PS1003S00	"Green" Power Supply 14VDC 4,7A for music amp ABI-MM1001S40	15
ABI-TA1001S00	IDC tool to mount twisted pair connectors	34
ABI-TA1002S00	Wire Cutting Pliers to mount twisted pair connectors	34
ABI-WA1010S00	Wall outlet faceplate & mounting ring for mosaic connectors - white	20
ABI-WA2xy0S00-5	Wall outlet adapter for keystone connector - 5pcs	20

