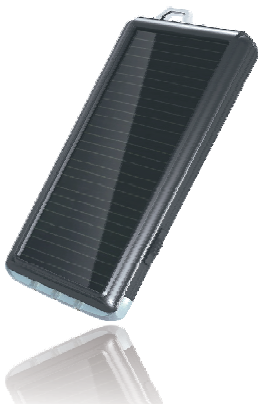


August[®]

User Manual



Solar Battery Charger & LED Torch

SPC1500

1. Introduction

The SPC1500 is a high-power, high capacity, solar-powered emergency charger. It stores energy from the sun in its internal 1500mAh battery enabling you to charge your portable gadgets whilst you're out and about. It can be used anywhere to recharge mobile phones, digital cameras, PDAs, MP3 players and other personal digital devices. Stylish, lightweight and compact, it can easily be carried whilst traveling and is ideal for outdoor use by people always on the go.

2. Main Features:

- Emergency solar battery charger
- For mobile phones & personal digital devices
- Stylish and compact design
- Charged by solar energy or USB port
- Monocrystal silicon photovoltaic panel
- Built-in LED torch for emergency light
- Over-charge protection to extend the battery life
- Battery capacity 1500mAh / 3.7V

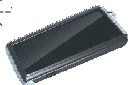
3. Parts & Functions



1) How to charge the battery

There are three ways to charge the battery.

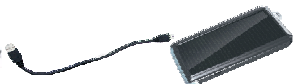
- Place the charger in direct sunlight, and the sunlight will be transformed and automatically recharge the built-in lithium battery. Whilst charging, the green solar indicator on the side of the will light, this LED increases and decreases in brightness according to the amount of power being captured.



Notice:

Whilst using solar energy to charge the device's internal battery, the solar panel should be placed upright in direct sunshine to ensure the best results.

- b) Connect the SPC1500 to a computer's USB port, the red charging light will turn on to indicate that the device is charging, once the battery is fully charged, this light will turn green.



- c) The SPC1500 can also be charged by mains power, or through a car's 12V cigarette lighter socket using the compatible August USB Power adaptor (not included). Whilst the device is being charged via an adaptor the red charging light will shine. The light will turn green once the device has fully charged.

Notice:

Before using the device we suggest completing two complete cycles of charge and discharge in order to improve the efficiency of the battery.

2) How to charge your digital devices

Connect the charger to your device using the USB cable and supplied adaptors. During charging, the usual charging indicator will appear on your digital device. You can use your digital device whilst it is still charging.

4. Specifications

- Battery capacity 1500mAh / 3.7V
- Monocrystal silicon photovoltaic panel
- Solar energy conversion efficiency above 15%
- Solar panels: 5.5V 80mA
- Output voltage: 5.5V +/- 0.2V
- Output current: 400-800mA
- Charging time by solar energy: 10-15 hours (depends on light intensity)
- Charging time by USB: aprox. 5 hours

5. Safety Instructions

- 1) Never apply direct pressure or scratch the solar panel with sharp objects.
- 2) Disconnect the charger from the mains or PC power supply once the battery has fully charged.
- 3) Use only the compatible August USB power adaptors with this device. Failure to do so can cause personal injury, damage the device, and will invalidate the warranty.
- 4) Keep this product away from water and do not store in a damp environment.
- 5) The product has short-circuit protection, it will automatically reset in 10 seconds after a short-circuit fault is cleared.

August International Ltd
United Kingdom
Telephone: +44 (0) 845 250 0586
Email: service@augustint.com
Web: www.augustint.com