



RELIABLE

***PANTMAN
USER MANUAL***



Model: F1

IMPORTANT SAFEGUARDS

When using an electric appliance, basic precautions should always be followed, including the following:

WARNING: DANGER OF SCORCHING

Read all instructions before using this pant press to reduce the risk of fire, electric shock, or injury.

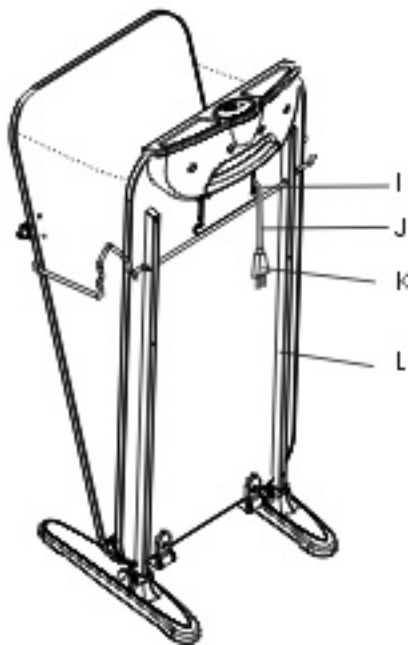
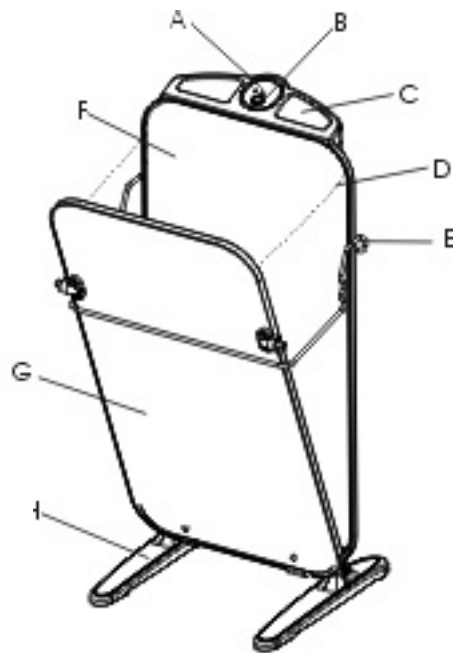
This product is designed for domestic use only.

- Do not use outdoors.
- Do not leave your pant press unattended while switched on. Turn off the switch and unplug the electrical cord when not in use. To unplug, grasp the plug, not the cord.
- Do not allow to be used as a toy. Close attention is necessary when used near children, pets or plants.
- The appliance is not intended for use by any children or infirm persons without supervision.
- Children should be supervised to ensure that they do not play with the appliance.
- Do not immerse the pant press into water or other liquids.
- Do not use with damaged cord or plug. If unit is not working as it should, has been dropped, damaged, left outdoors, or immersed into liquid, contact a licensed service technician for assistance.
- Do not pull or carry by cord, use cord as a handle, close a door on the cord, or pull cord around sharp edges or corners. Keep cord away from heated surfaces.
- Do not use extension cords or outlets with inadequate current carrying capacity.
- Do not handle or use this unit while hands are wet.
- Use only as described in this manual. Operating unit in any way other than recommended may result in damage to unit or injury to operator.
- Do not disassemble unit or attempt to make any repairs yourself. Incorrect assembly or repair could result in a risk of fire, electric shock, or injury to persons when operating.
- store your pant press in a cool, dry place. Allow unit to cool completely, and loop power cord loosely around unit before storing.

SAVE THESE INSTRUCTIONS

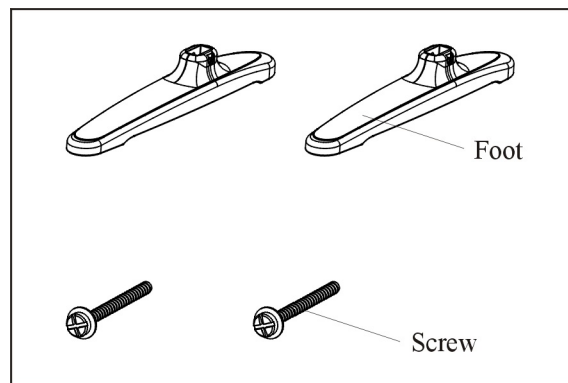
F1 pant press product information

- A. Power Indicator Light
- B. On Button
- C. Placement for watch 、 keys etc.
- D. Safety chain
- E. Press board bar
- F. Press board
- G. Front pressing plate
- H. Foot
- I. Cord wrap
- J. Cord
- K. Plug
- L. ~

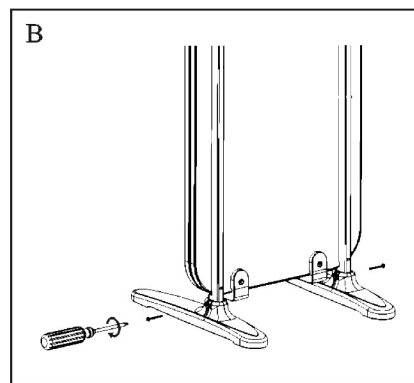
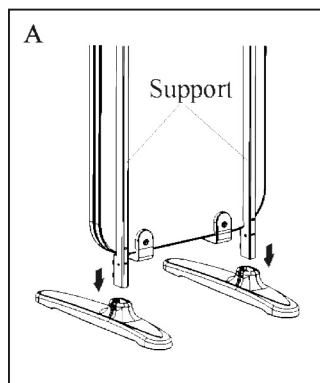


ASSEMBLY INSTRUCTIONS

Accessories



- A. Attach the support to the foot.
- B. Insert the attached screws into each hole in foot, and tighten them securely with screwdriver.



OPERATING INSTRUCTIONS

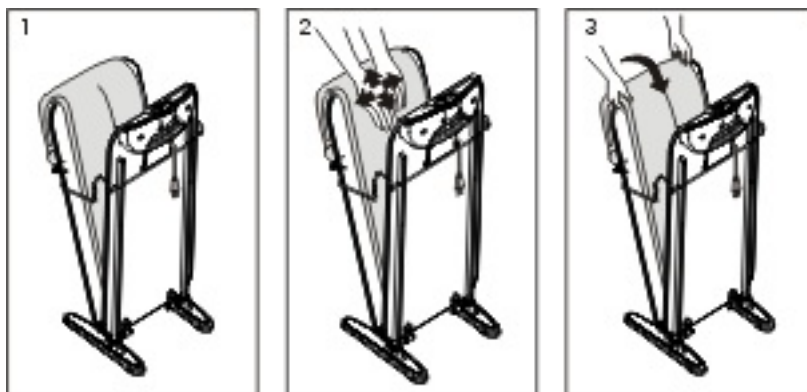
A. To open the front pressing plate

Pull the press board bar to open the front pressing plate slowly. The press board bar will hold the front pressing plate in an **open** position.



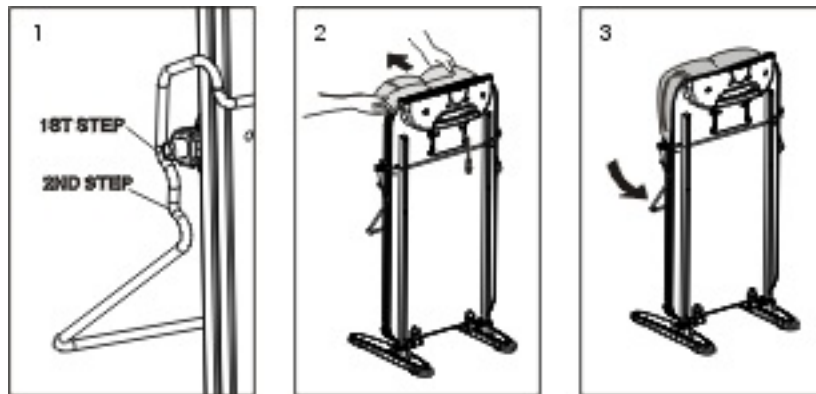
B. How to insert the pants

1. Place the cuffs or bottoms of legs of trousers or pants as far down as possible between the front pressing plate and the press board. The waistline of the pants should be hung over the top edge of the front pressing plate.
2. Tidy up the slack of pants.
3. Make sure to place the pants in the middle of the front pressing plate, with the side seam (as indicated in Figure 3.) aligned with the groove (in the padding - figure not shown) in the front pressing plate.

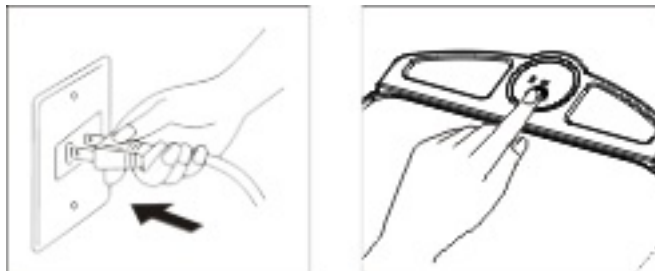


C. To close the front pressing plate

1. Pull the press board bar to the 2nd step (1st step is for thick trousers or pants).
 2. Hold the waistline of the pants and gently pull upwards. This will smooth out any wrinkles and ensure that pants or trousers are lying flat between the front pressing plate and press board.
 3. Pull the press board bar down firmly until the front pressing plate is fully locked into the **closed** position.
- * Pull the pants upwards once again.



D. Plug the cord into the power socket. The power indicator light will illuminate, and the press will start automatically



E. The press will automatically shut off when the job is completed, and the power indicator light will also go off. To restart the pressing, press the "on" button, the power indicator light will illuminate again and start the pressing cycle.

TROUBLESHOOTING GUIDE

Below is a chart detailing the most common problems, their causes and solutions. Prior to troubleshooting, isolate the unit by removing the cord from the power socket.

| PROBLEM | CAUSE | SOLUTION |
|---------------------------------|---|---|
| Unit fails to operate properly. | Unit is not plugged in. Unit is damaged or malfunctioning. | Plug into electric socket and make sure the power indicator light is on. Please contact a licensed technician. |
| Unit fails to heat up. | Unit is not plugged in. The press board has been damaged or is malfunctioning. | Plug into electric socket. Immediately stop use and let the unit cool down completely. Contact a licensed technician. |



Reliable Corporation
5-100 Wingold Avenue
Toronto, Ontario
Canada M6B 4K7
www.reliablecorporation.com

P 416 785 0200
F 416 785 7038
TF 800 268 1649
sales@reliablecorporation.com