

Thanks for shopping with Improvements®!

Wallmount Vac 3.5 Gallon

Item #410497



IMPROVEMENTS®
...for your home, inside and out

To order, call
1-800-642-2112
West Chester, OH 45069

If you have any questions regarding this product, call
1-800-642-2112 and ask for our product specialists
(Mon.-Fri. 9:00-5:00 EST) or e-mail:
productspecialist@improvementscatalog.com
See many more products on the Internet!
www.ImprovementsCatalog.com

IMPORTANT SAFETY INSTRUCTIONS

When using an electrical appliance, basic precautions should always be followed, including the following: **READ ALL INSTRUCTIONS BEFORE USING THIS APPLIANCE.**

⚠ WARNING – TO REDUCE THE RISK OF FIRE, ELECTRIC SHOCK OR INJURY:

- Do not leave appliance when plugged in. Unplug from outlet when not in use and before servicing. Connect to a properly grounded outlet only. See Grounding Instructions.
- Do not expose to rain – store indoors.
- Do not allow to be used as a toy. Close attention is necessary when used by or near children.
- Use only as described in this manual. Use only Manufacturer's recommended attachments.
- Do not use with damaged cord or plug. If appliance is not working as it should, has been dropped, damaged, left outdoors or dropped into water, contact Shop-Vac Corporation for assistance.
- Do Not: pull or carry by cord, use cord as a handle, close a door on cord or pull cord around sharp edges or corners. Do not run appliance over cord. Keep cord away from heated surfaces.
- Do not unplug by pulling on cord. To unplug, grasp the plug; not the cord.
- Do not handle plug or appliance with wet hands.
- Do not put any object into openings. Do not use with any openings blocked; keep free of dust, lint, hair and anything that may reduce air flow.
- Keep hair, loose clothing, fingers and all parts of body away from openings and moving parts.
- Do not pick up anything that is burning or smoking, such as cigarettes, matches or hot ashes.
- Do not use without dust bag and/or filters in place.
- Turn off all controls before unplugging.

- Use extra care when cleaning on stairs.
- Do not use to pick up flammable or combustible liquids such as gasoline or use in areas where they may be present.
- Do not use your cleaner as a sprayer of flammable liquids such as oil base paints, lacquers, household cleaners, etc.
- Do not vacuum toxic, carcinogenic, combustible or other hazardous materials such as asbestos, arsenic, barium, beryllium, lead, pesticides or other health endangering materials. Specially designed units are available for these purposes.
- Do not pick up soot, cement, plaster or drywall dust without cartridge filter and collection filter bag in place. These are very fine particles that may pass through the foam and affect the performance of the motor or be exhausted back into the air. Additional collection filter bags are available.
- Do not leave the cord lying on the floor once you have finished the cleaning job. It can become a tripping hazard.
- Use special care when emptying heavily loaded tanks.
- To avoid spontaneous combustion, empty tank after each use.
- The operation of a utility vac can result in foreign objects being blown into eyes, which can result in eye damage. Always wear safety goggles when operating vacuum.
- STAY ALERT.** Watch what you are doing and use common sense. Do not use vacuum cleaner when you are tired, distracted or under the influence of drugs, alcohol or medication causing diminished control.
- WARNING!** Do **NOT** use this vacuum cleaner to vacuum lead paint debris because this may disperse fine lead particles into the air. This vacuum cleaner is not intended for use under EPA Regulation 40 CFR Part 745 for lead paint material cleanup.

SAVE THESE INSTRUCTIONS

⚠ WARNING – DO NOT LEAVE VACUUM UNATTENDED WHEN IT IS PLUGGED IN AND/OR OPERATING. UNPLUG UNIT WHEN NOT IN USE.

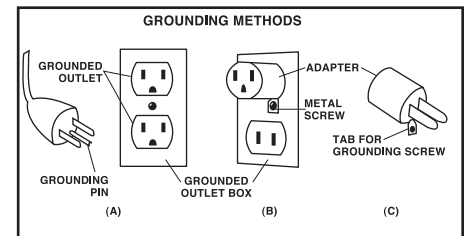
GROUNDING INSTRUCTIONS

This appliance must be grounded. If it should malfunction or breakdown, grounding provides a path of least resistance for electric current to reduce the risk of electric shock. This appliance is equipped with a cord having an equipment-grounding conductor and grounding plug. The plug must be inserted into an appropriate outlet that is properly installed and grounded in accordance with all local codes and ordinances.

⚠ WARNING – IMPROPER CONNECTION OF THE EQUIPMENT-GROUNDING CONDUCTOR CAN RESULT IN A RISK OF ELECTRIC SHOCK. CHECK WITH A QUALIFIED ELECTRICIAN OR SERVICE PERSON IF YOU ARE IN DOUBT AS TO WHETHER THE OUTLET IS PROPERLY GROUNDED. DO NOT MODIFY THE PLUG PROVIDED WITH THE APPLIANCE – IF IT WILL NOT FIT THE OUTLET, HAVE A PROPER OUTLET INSTALLED BY A QUALIFIED ELECTRICIAN.

This appliance is for use on a nominal 120-volt circuit, and has a grounded plug that looks like the plug illustrated in **sketch A**. A temporary adaptor that looks like the adaptor illustrated in **sketches**

B and C may be used to connect this plug to a 2-pole receptacle as shown in **sketch B** if a properly grounded outlet is not available. The temporary adaptor should be used only until a properly grounded outlet (**sketch A**) can be installed by a qualified electrician. The green colored rigid ear, lug or the like extending from the adaptor must be connected to a permanent ground such as a properly grounded outlet box cover. Whenever the adaptor is used, it must be held in place by a metal screw.



IN CANADA, THE USE OF A TEMPORARY ADAPTOR IS NOT PERMITTED BY THE CANADIAN ELECTRICAL CODE. Make sure that the appliance is connected to an outlet having the same configuration as the plug. No adaptor should be used with this appliance.

EXTENSION CORDS

When using the appliance at a distance where an extension cord becomes necessary, a 3-conductor grounding cord of adequate size must be used for safety, and to prevent loss of power and overheating. Use the table below to determine A.W.G. wire size required. To determine ampere rating of your vacuum, refer to nameplate located on rear of motor cover.

Before using appliance, inspect power cord for loose or exposed wires and damaged insulation. Make any needed repairs or replacements before using your appliance. Use only three-wire outdoor extension cords which have three-prong grounding-type plugs and three-pole receptacles which accept the extension cord's plug. When vacuuming liquids, be sure the extension cord connection does not come in contact with the liquid.

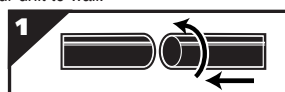
NOTE: STATIC SHOCKS ARE COMMON IN DRY AREAS OR WHEN THE RELATIVE HUMIDITY OF THE AIR IS LOW. THIS IS ONLY TEMPORARY AND DOES NOT AFFECT THE USE OF THE APPLIANCE. TO REDUCE THE FREQUENCY OF STATIC SHOCKS IN YOUR HOME, THE BEST REMEDY IS TO ADD MOISTURE TO THE AIR WITH A CONSOLE OR INSTALLED HUMIDIFIER.

Volts		Total length of cord in feet				
120V		25	50	100	150	
Ampere Rating More Than	Not More Than	AWG				
		0	-	6	18	16
6	-	10	18	16	14	12
10	-	12	16	16	14	12
12	-	16	14	12	Not recommended	

UNPACKING AND SET-UP

- Remove the tank cover by pushing in the side lugs with thumbs and lifting up on the tabs of the tank cover.
- Remove any accessories and paperwork, which may have been shipped in the tank.
- Before replacing tank cover, refer to Dry Pick Up or Wet Pick Up Operation in this manual to ensure you have the proper filters installed for your cleaning operation.
- Replace tank cover on the tank by aligning tabs with lugs. Press down firmly on the upper housing until tank cover snaps into place.
- Refer to mounting instructions in this manual to attach your unit to wall.
- Attach hose to inlet located on side of tank following the instructions that apply to your specific unit:

For 3.5 gallon:
Grasp curved hose end and position open end over inlet with long portion pointing upwards. Push hose end into inlet as firmly as possible making sure



notch on hose end lines up with tab on inlet. Turn hose end until it is pointing towards bottom of tank.

For 5 gallon:

Position non-threaded end of elbow over inlet with threaded end pointing upwards. Push elbow into inlet as firmly as possible making sure notch on elbow lines up with tab on inlet. Turn elbow until threaded part of elbow is pointing towards bottom of tank. Insert long machine hose end with locking-nut into end of elbow and tighten. Do not over-tighten.

- Attach the extension wands (**not standard with all models**) to the accessory end of the hose. Twist slightly to tighten the connection (**Figure 1**).
- Attach one of the cleaning accessories (depending on your cleaning requirements) on the extension wands. Twist slightly to tighten the connection (**Figure 1**).
- Plug the cord into the wall outlet. Your cleaner is ready for use. **I = ON, 0 = OFF**

NOTE: MANY MORE USEFUL TOOLS ARE AVAILABLE AT YOUR LOCAL DEALER OR SHOP-VAC® WEBSITE.

MOUNTING INSTRUCTIONS

Wall Bracket Installation:

1. Select mounting location at a wall stud and/or provide a minimum 8" wide x 12" high x 3/4" thick surface, which is strong enough to hold the weight of the vacuum unit with a full tank of debris.

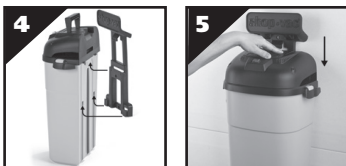
⚠ WARNING — INADEQUATE MOUNTING COULD ALLOW THE UNIT TO FALL, CAUSING INJURY AND/OR DAMAGE TO THE UNIT.

2. Secure wall bracket to mounting surface with 3 screws provided or other suitable fastener. (NOTE: The screws provided are adequate ONLY for mounting into wood. Be sure to use the proper, suitable fasteners for mounting vacuum to a surface other than wood.) Make sure bracket is level (Figure 2).
3. The tool bag hook can be mounted on the wall in close proximity to the vacuum. Secure with screws provided. Hang tool bag onto hook using loop in back of tool bag (Figure 3).



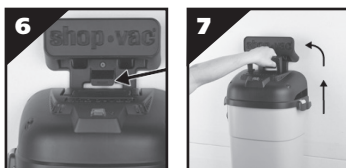
Attach Vac:

1. Grasp top handle with one hand and place other hand under front of tank.
2. Align tab on back of vacuum (located near top of tank) to engage with slot in center of wall bracket as vacuum is lowered into bracket (Figure 4).
3. Push downward making sure slots on vacuum (located near the bottom of the tank) attach to the tabs located at bottom of bracket (Figure 5).
4. Lower top handle on vacuum to lay flat on top of housing. This will secure unit in bracket.



Detach Vac:

1. Push release lever on bracket with thumb, while moving top handle on vacuum to the up position (Figure 6).
2. Grasp top handle with one hand and place other hand under front of tank.
3. Pull upward until vacuum detaches from bracket (Figure 7).



DRY PICK UP

⚠ WARNING — ALWAYS DISCONNECT THE PLUG FROM THE WALL OUTLET BEFORE REMOVING THE TANK COVER.

⚠ CAUTION — KEEP FILTERS CLEAN

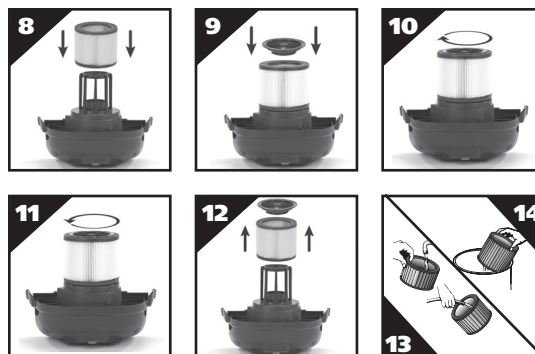
EFFICIENCY OF THE VACUUM IS LARGELY DEPENDENT ON THE FILTER. A CLOGGED FILTER CAN CAUSE OVERHEATING AND POSSIBLY DAMAGE THE CLEANER. CHECK THE FILTER PERIODICALLY AND REPLACE AS REQUIRED.

INSTALLING THE CARTRIDGE FILTER

(Not standard with all models)

The cartridge filter can be used for wet or dry pick up; installation is the same for both. Use the cartridge filter in position over the lid cage for most general dry material pick up. With the tank cover in an upside down position, slide the cartridge filter down over the lid cage, pushing until the filter seals against the cover (Figure 8). Place filter retainer into the top of the cartridge filter, hold the tank cover with one hand, turn the handle on the filter retainer clockwise to tighten, locking the filter into place (Figures 9 & 10). To remove the filter for cleaning, again hold the tank cover and turn the filter retainer counter-clockwise to loosen and remove, slide the cartridge filter off the lid cage (Figures 11 & 12). To clean the cartridge filter shake or brush off excess

dirt or rinse (from the inside of the filter) with water, dry completely (approximately 24 hours) and re-install (Figures 13 & 14). Note: If the filter has been used for wet pick up, it must be cleaned and dried before using for dry pick up.



INSTALLING THE DISPOSABLE FILTER BAG

(Not Standard with All Models)

1. Use for dry pick up only. Use in conjunction with cartridge filter for picking up soot, cement, plaster or drywall dust.
2. With cord disconnected from receptacle, remove tank cover.
3. Grasp cardboard collar firmly and slide rubber guard onto inlet fitting as far as possible (Figure 15).
4. When secured in place, expand bag and position around the inside of the tank.



WARNING FOR FINE DUST & POWDERS

When vacuuming fine dust, or powders of any kind (ex. plaster, drywall dust, cold ashes, concrete dust, etc.)...a **high efficiency drywall filter bag must be used**. When vacuuming normal household dust and debris, standard household disposable filter bags may be used. These "large bag" filters connect to the air inlet fitting on the inside of the vacuum tank.

FILTER SELECTION GUIDE

SIZE	Fine dust Drywall	Standard Household	90107 REUSABLE DRY FILTER AND MOUNTING RING fits most Shop-Vac® Wet/Dry Vacuums.
3.5 U.S. Gal (13.2L)	N/A	91931/Ⓢ	90585 FOAM FILTER SLEEVE fits most Shop-Vac® Wet/Dry Vacuums.
5 U.S. Gal (18.9L)	N/A	91932/Ⓢ	

WET PICK UP OPERATION

Remove ALL dirt and debris found in tank. The vacuum requires only a minimum of conversion when going from dry to wet pick up. Remove all dry use filters from the vacuum. A clean cartridge filter may be used for vacuuming small amounts of liquids. For best results when vacuuming large quantities of liquid, remove the cartridge filter. When vacuuming liquids containing debris, it is recommended purchasing a foam sleeve and install over filter cage; otherwise a foam sleeve is not required for wet pick up. Foam sleeve and additional filters may be purchased by visiting our website at www.shopvac.com, contacting our customer service department, or purchasing at your local Shop-Vac® distributor.

Misting in exhaust air may occur if the filter becomes saturated during wet pick up. If misting occurs, remove filter and allow to dry or, replace with another dry filter to eliminate the misting and possible dripping of liquid around the lid. Turn the unit off immediately upon completing a wet pick up job or when tank is full and ready to be emptied. Raise the hose to drain any excess liquid into the tank. The interior of the tank should be periodically cleaned.

Installing Foam Sleeve:
(Not standard with all models)

1. With tank cover in an upside down position, slide foam sleeve down over lid cage until foam sleeve completely covers lid cage (Figure 16).
2. Place filter retainer into top of foam sleeve (Figure 17).
3. Hold the tank cover with one hand; turn the handle on the filter retainer clockwise to tighten, locking the filter into place (Figure 18).



Cleaning Foam Sleeve:
(Not standard with all models)

1. The foam sleeve should be cleaned periodically. Always disconnect the plug from the wall receptacle before removing the tank cover. Place tank cover in an upside down position.
2. Hold the tank cover and turn the filter retainer counterclockwise to loosen and remove (Figure 19).



3. Remove foam sleeve by sliding it up and off the lid cage.
4. Shake excess dust off foam sleeve with a rapid up and down movement.
5. Hold foam sleeve under running water for a minute or two, rinsing from the inside. A water wash is not always required, depending on the condition of the foam sleeve.
6. Gently wring out excess water, blot foam sleeve with a clean towel and allow to dry. The foam sleeve is now ready to be reinstalled on the lid cage.

NOTE: WET PICK UP ACCESSORIES SHOULD BE WASHED PERIODICALLY, ESPECIALLY AFTER PICKING UP WET, STICKY KITCHEN ACCIDENTS. THIS CAN BE ACCOMPLISHED WITH A WARM SOLUTION OF SOAP AND WATER.

EMPTYING LIQUID WASTES FROM THE TANK

Your Wet/Dry Vacuum may be emptied of liquid waste by removing the tank cover. To empty, stop the motor and remove the plug from the wall receptacle. Remove the tank cover and deposit the liquid waste contents in a suitable drain. After the tank is empty, return the cover to its original position. To continue use, plug the cord into the wall receptacle and start the motor.

AUTOMATIC SUCTION SHUT-OFF

The vacuum is equipped with an automatic suction shut-off that operates when picking up liquids. As the level of the liquid rises in the tank, an internal float rises until it seats itself against a seal at the intake of the motor, shutting off suction. When this happens, the motor will develop a higher than normal pitch noise and the suction is drastically reduced. If this occurs, turn unit off immediately. Failure to turn unit off after float rises and shuts off suction will result in extensive damage to the motor. To continue use, empty the liquid waste from the tank as outlined in the previous paragraph.

NOTE: IF ACCIDENTALLY TIPPED OVER, THE VACUUM COULD LOSE SUCTION. IF THIS OCCURS, TURN UNIT OFF AND PLACE VAC IN UPRIGHT POSITION. THIS WILL ALLOW THE FLOAT TO RETURN TO ITS NORMAL POSITION, AND YOU WILL BE ABLE TO CONTINUE OPERATION.

LUBRICATION

No lubrication is necessary as the motor is equipped with lifetime lubricated bearings.

STORAGE

Before storing your vacuum the tank should be emptied and cleaned. The power cord can be wrapped around the cord wraps provided on the tank cover on front of vacuum (**Figure 20**). The hose may be wrapped around the wall bracket and the accessories stored in the tool bag so they can be readily available (**Figure 21**). **The vacuum should be stored indoors.**



TROUBLESHOOTING

Trouble	Possible Cause	Remedy
Suction weakens or cleaner runs hot	Clogged filter	Brush dirt from filter. If condition continues, change filter.
	Air leak	Check all fittings for tight fit (nozzles, hose, etc.) Check that tank cover is sealed properly.
	Obstruction in hose or nozzle.	Check nozzle, hose, etc. for obstructions, and remove if present.
Misting in the exhaust air	Saturated filter	Replace saturated filter with a dry filter.

⚠ WARNING – IF ANY OF THE MOTOR HOUSING PARTS SHOULD BECOME DETACHED OR BROKEN, EXPOSING THE MOTOR OR ANY OTHER ELECTRICAL COMPONENTS, OPERATION SHOULD BE DISCONTINUED IMMEDIATELY TO AVOID PERSONAL INJURY OR FURTHER DAMAGE TO THE VACUUM. REPAIRS SHOULD BE MADE BEFORE REUSING THE VACUUM.

THREE YEAR HOME USE WARRANTY

Your Shop-Vac® vacuum cleaner is warranted for normal household use, in accordance with the User Manual, against original defects in material and workmanship for a period of three years from date of purchase. Should this product be used for commercial or rental use, a 90 day limited warranty will apply. Shop-Vac Corporation warrants placing this vacuum cleaner in correct operating condition, by repair or parts replacement, during the warranty period, without charge. This warranty does not cover accessories. Use of non-recommended filters and/or accessories may void the manufacturer's warranty. Shop-Vac® assumes no responsibility for damage or faulty performance caused by misuse, careless handling, and where repairs or modifications have been made. Do not attempt to service your vacuum beyond that described in the User Manual. Proof of purchase date is required. The warranty gives you specific legal rights, and you may have other rights which vary from state to state or province to province. This warranty is void outside of the United States and Canada.

Customers in the United States: for product service contact Shop-Vac Corporation, Customer Service, at (570) 326-3557 or go to www.shopvac.com/support. Visit www.shopvac.com for your vacuum's parts list schematic.

Customers in Canada: for product service return the complete unit, (transportation prepaid), to the Authorized Shop-Vac® Service Center nearest you. Visit www.shopvac.ca for a complete list of Authorized Service Centers in your area.

Customers in Mexico: for product service see paperwork that came with your unit.