

Salvation**DATA**

Flash Programmer for WD

For WD HDD repair and its data recovery needs

User Manual revision 1.1

Last updated on November 21, 2006

FOR WINDOWS 98/2000/XP/2003

SalvationDATA Technologies

APPROVED

By Pat Lin at 2:28 pm, Nov 21, 2006

Thank you for purchasing **HD Doctor for WD** from SalvationDATA Technology, Inc. To ensure your success in the installation and use, please read the following explanations and guidelines thoroughly and very carefully. If there is more product information needed, you could contact us through our official website at <http://www.salvationdata.com> or Email sales@salvationdata.com.

Your inquiries and suggestions are warmly welcomed.

Sincerely yours,

SalvationDATA Technology, Inc.
401 Research Institute of Computer Application,
Chinese Academy of Science
Chengdu Branch, Chengdu 610041, Sichuan, China
Phone: (+86)28 68107757
Fax: (+86)28 68107757
www.SalvationDATA.com



Note: This is the revision 1.1 of the user manual, still the program graphical interfaces and our user manuals are being improved, and therefore there would be some differences between the snapshots displayed here and the ones you see in program you receive. But there will be no change made to the functions. Please keep an eye on our website for any user manual update released.

Content

1. General Product Introduction
2. Installing
3. Fast Start
4. Key Explanations on Each Function (**Strongly Recommended**)
5. Supplements

License Agreement

Software Warranty, Guarantee and Discount Coupon

Technical Support

General Product Introduction

SalvationDATA Flash Programmer is specially designed for data recovery and drive repair needs towards Western Digital drives; by just simply connect the Flash Programmer through the HD Doctor to any kind of computer owns a USB socket (supports USB 1.1 and above protocols) and one of the following Microsoft OS: Windows 98/Windows 2000/Windows XP/Windows 2003; then you can start working on the PCB BIOS chip: erase the microcode, read microcode and save it in the current directory, write the defined microcode to the chip to replace the original one and compare the microcode in use with a defined one for difference.

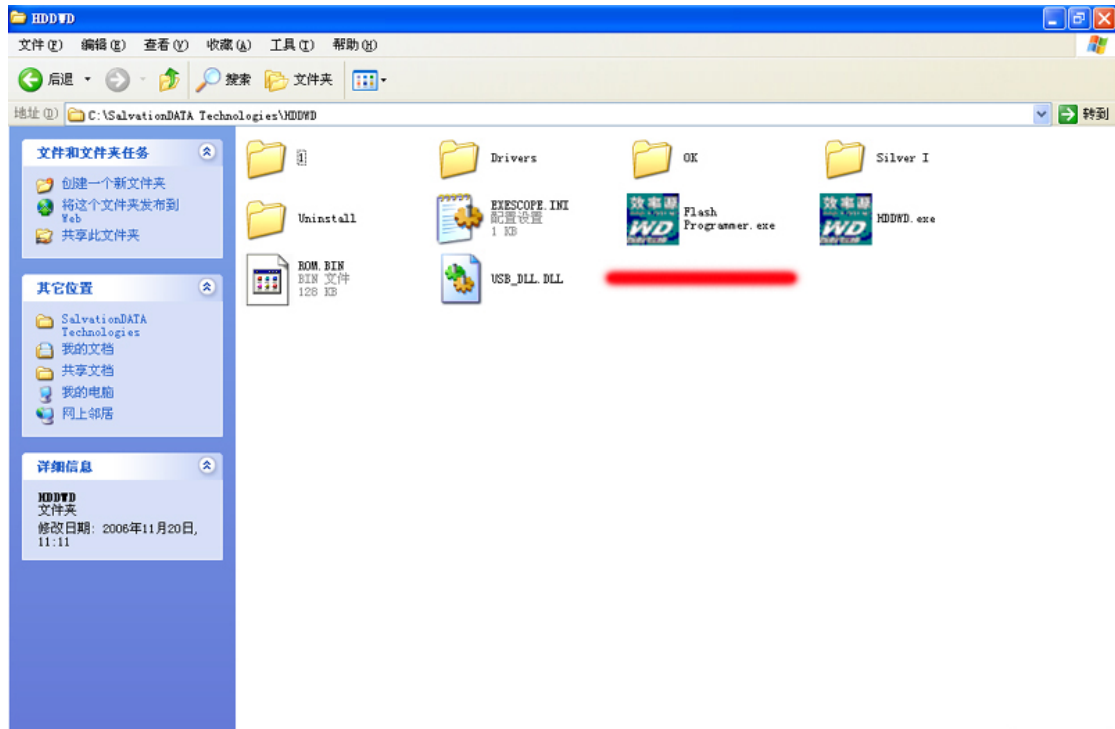
NOTE:

Please read the HD Doctor for WD user manual first to understand when you should use Flash Programmer.

Carefully read and fully understand this manual is suggested for your better success in data recovery and drive repair.

Installing

The Flash Programmer will be installed on your computer by the time you install the HD Doctor for WD, you can find it easily in the installation folder of the HD Doctor for WD program.



Fast Start

1. How to identify the type of a WD drive (through its PCB):



As you can see in the above picture, there are 3 test-programming slots on the PCB, drives with such PCBs belongs to WD Silver I series;



In the above picture, such drive with only 2 slots belongs to WD Silver II series;



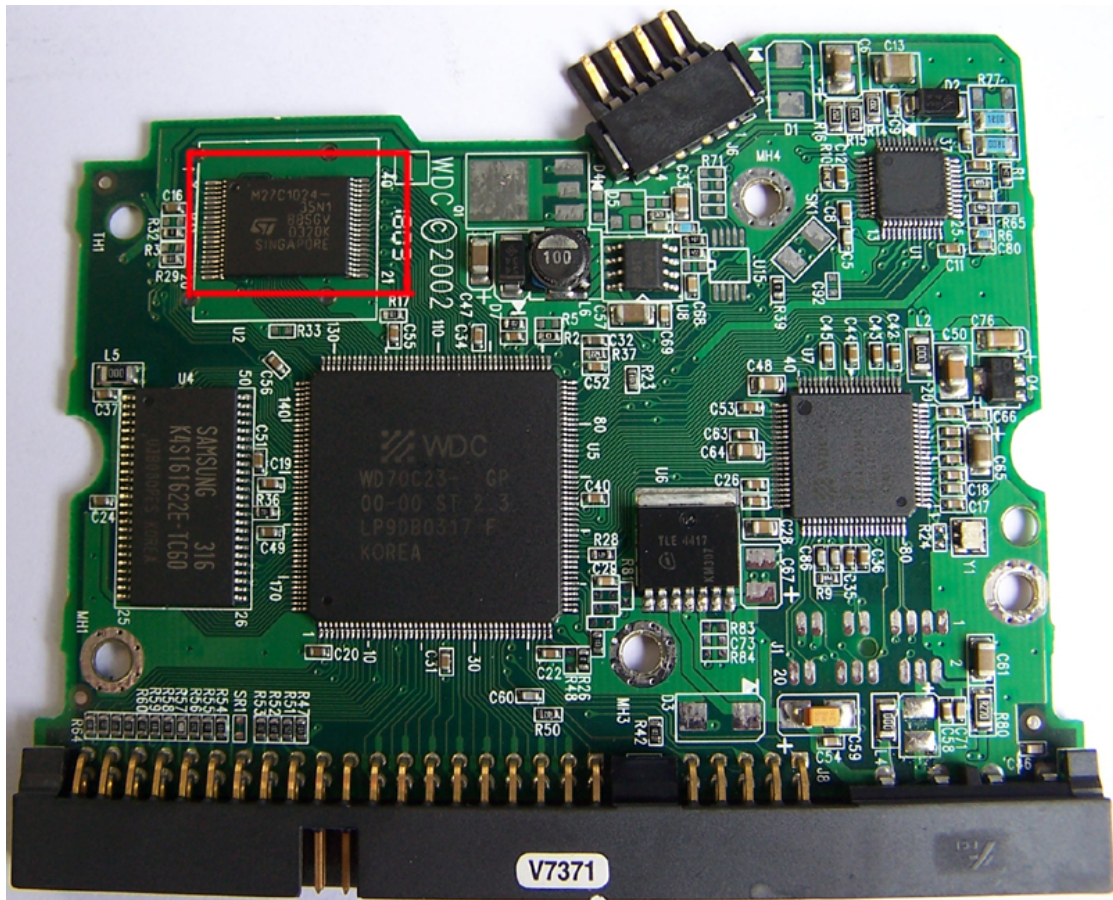
The above drive with an "L" shape PCB belongs to WD Black I series;



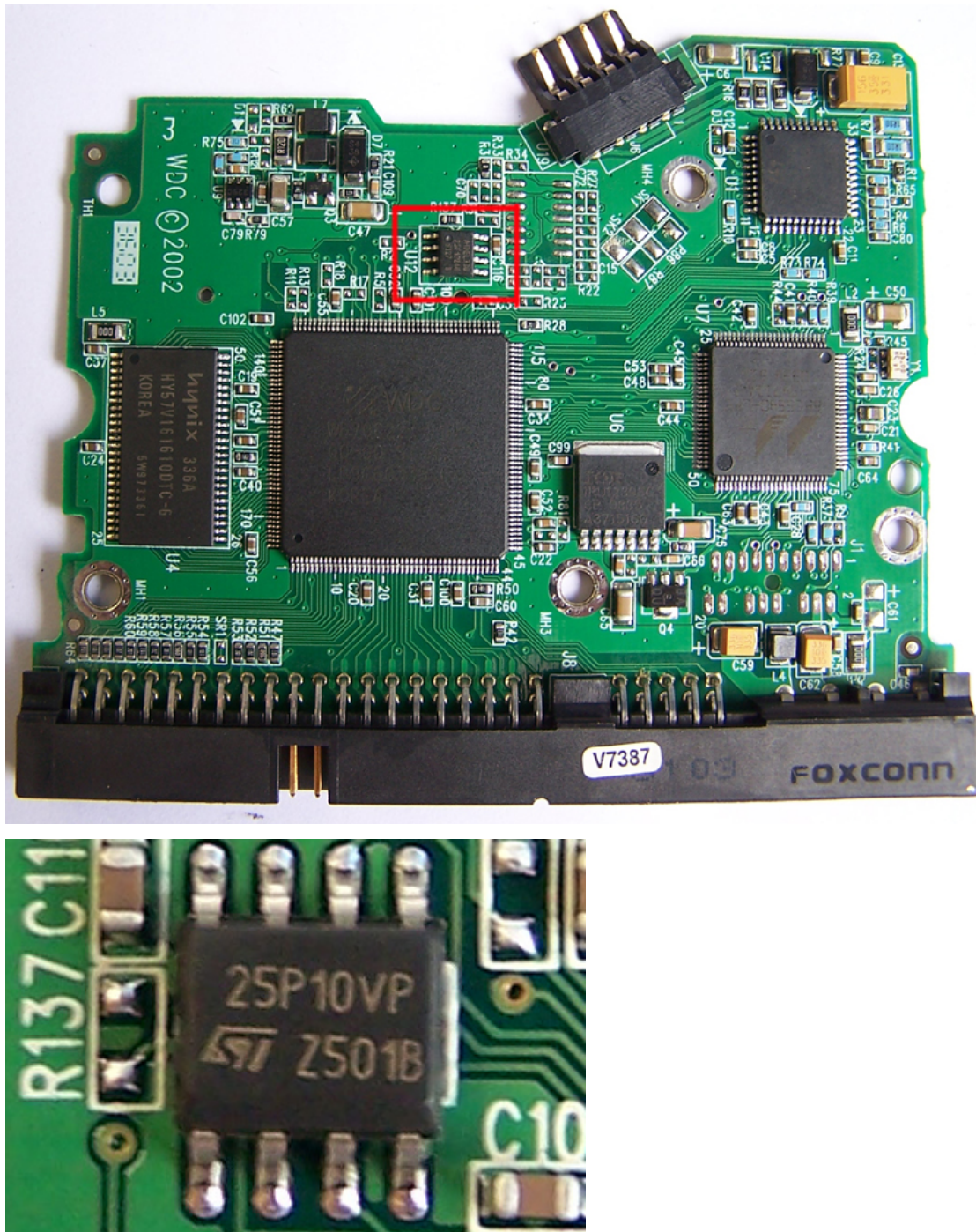
The above drive with a common PCB belongs to WD Black II series.

Our Flash Programmer supports only the BIOS chips of Silver II, Black I and Black II series of drives only; it does not support chips from a Silver I series of drive. Here I am going to tell you why:

The following is a PCB of a Silver I drive and its BIOS chip:



The following is a PCB of a Silver II drive and its BIOS chip:

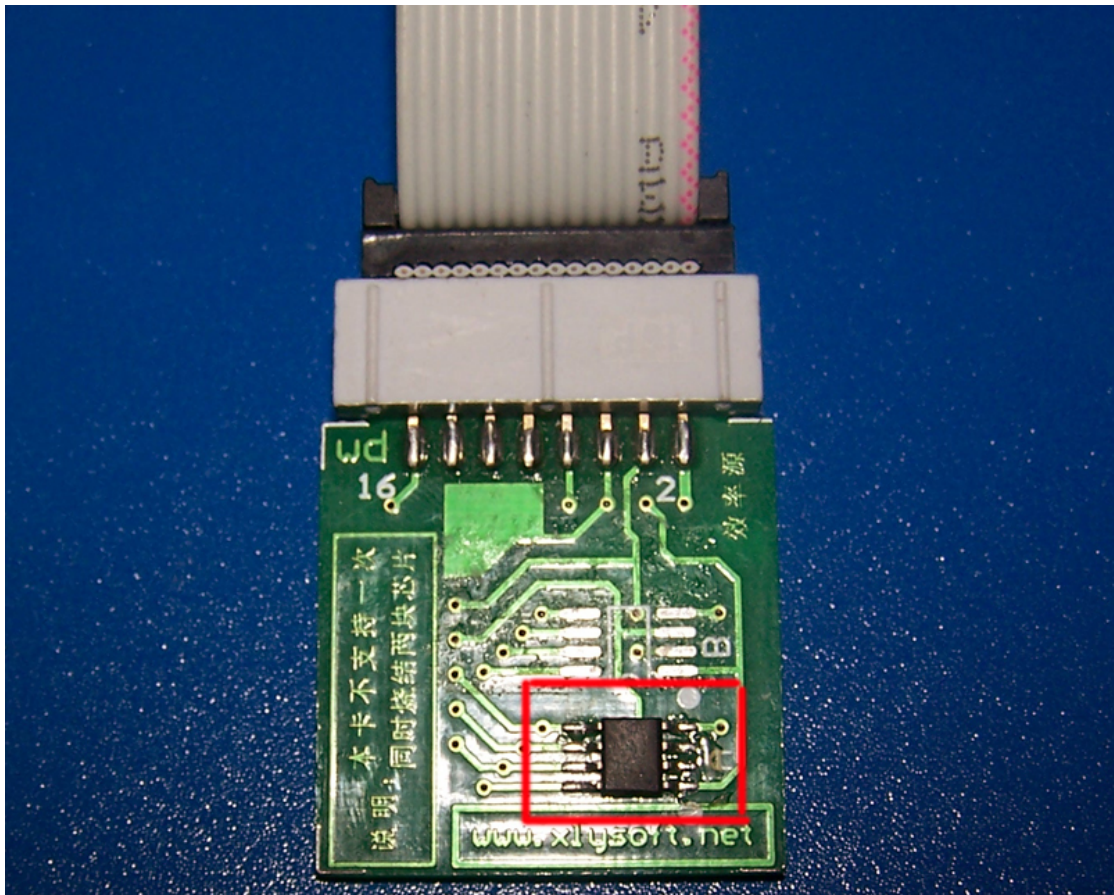


From the above two pictures you can see the Silver I drive BIOS chip is different from the BIOS chip of the Silver II drive (Black I and Black II series are the same with Silver II series in the BIOS chip), and our programmer supports only the chips with 8 pins, not that kind of Silver I with 40 pins. For Silver I series of drives, please use the HD Doctor for WD program "Download ROM" and "Upload ROM" function (refer to HD Doctor for WD user manual for details).

2. Before entering the program



The connections of the programmer



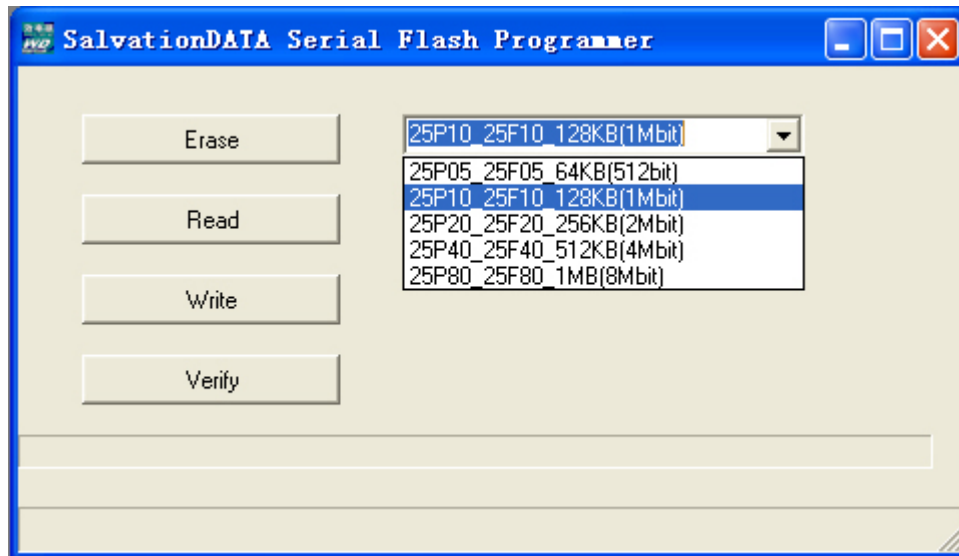
The placement of the chip (remove the chip from the PCB and connect the chip by soldering to the programmer)

And don't forget to connect the HD Doctor to your computer.

You can then double click the Flash Programmer.exe to launch the program.

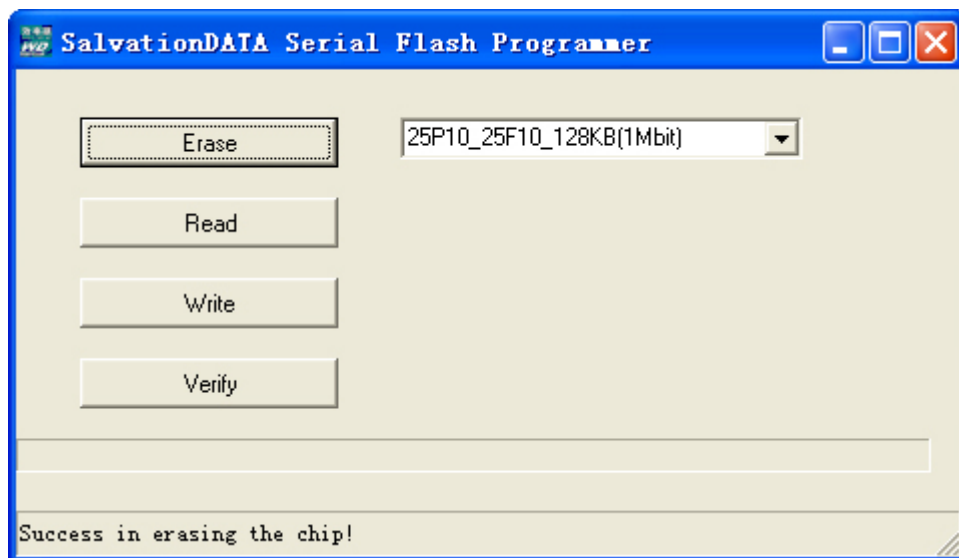
Key Explanations on Each Function

Select the type of your chip



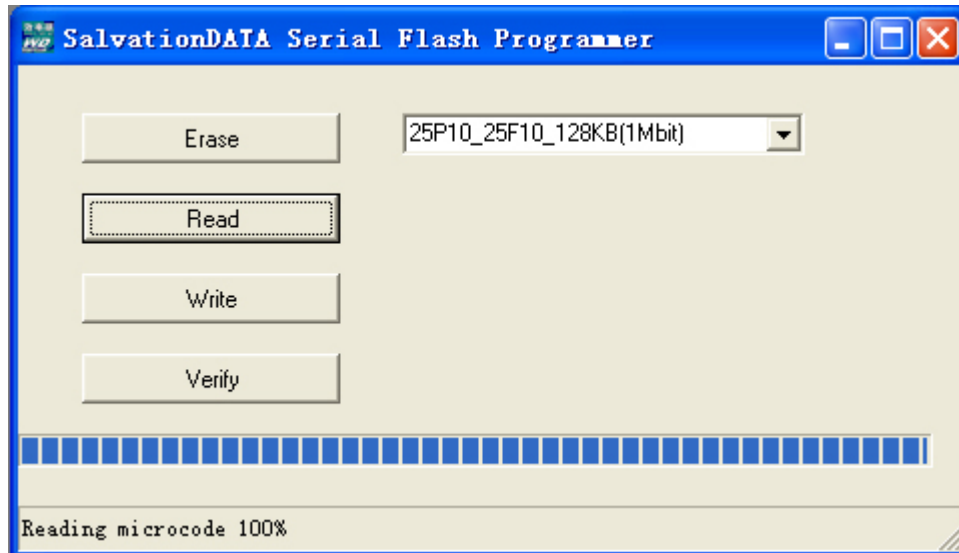
Select the corresponding type from the list before you do anything. The chips we send to you are all 25P10.

Erase

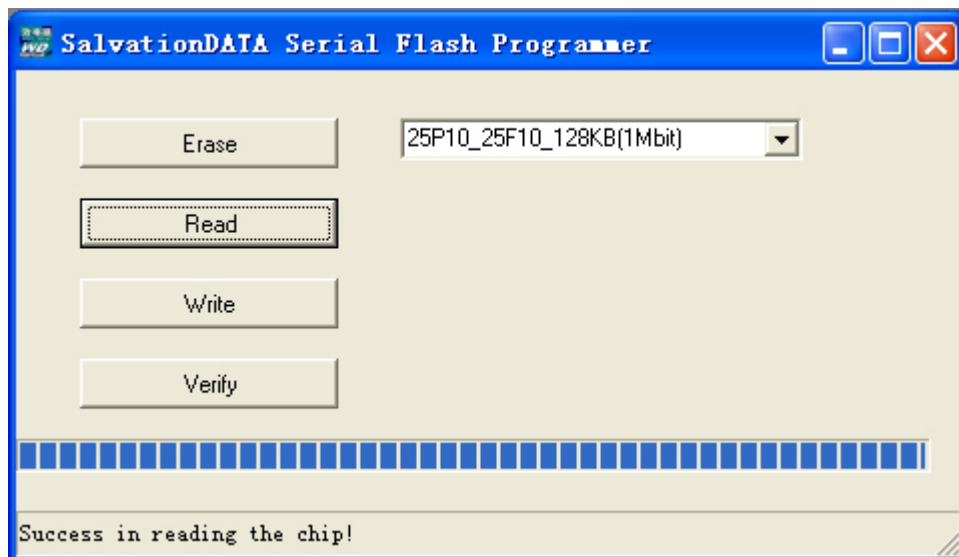


This function is to erase the chip to make it ready for rewriting. After the erase done, the chip will become empty.

Read

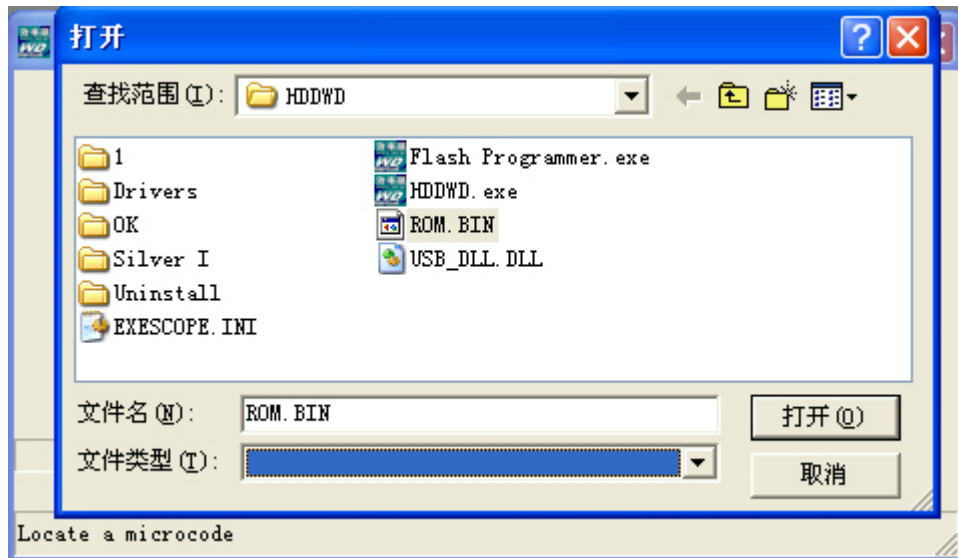


Read all microcode from the target chip and save as a ROM.BIN file in the current folder.



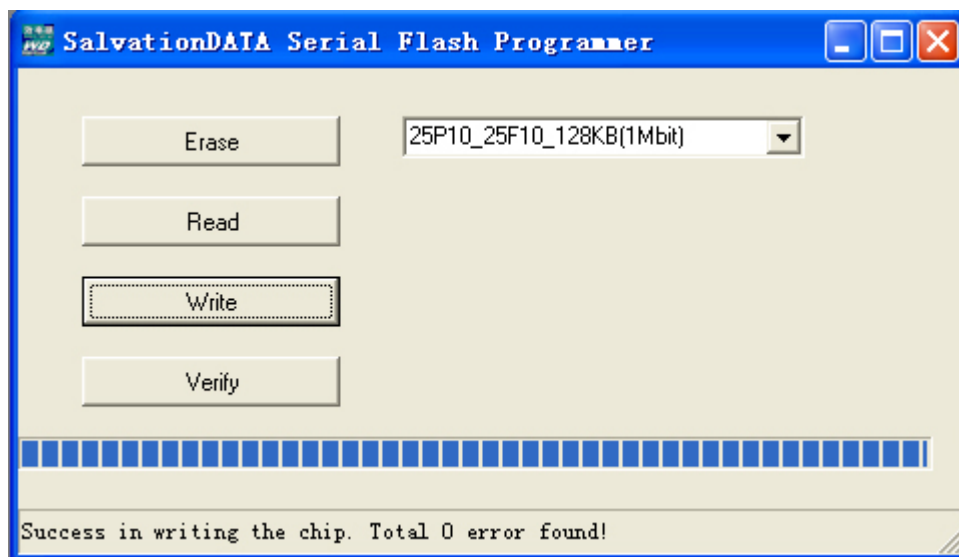
Read operation finished.

Write



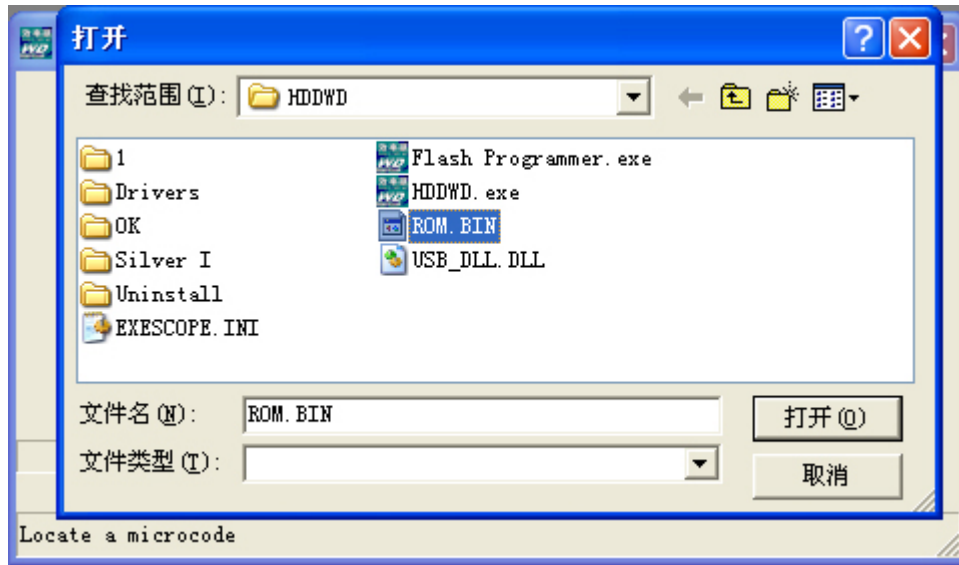
To upload a saved ROM.BIN to replace the microcode currently in the chip. First to locate the target ROM.BIN.

The upload will start once you define the target ROM.BIN;



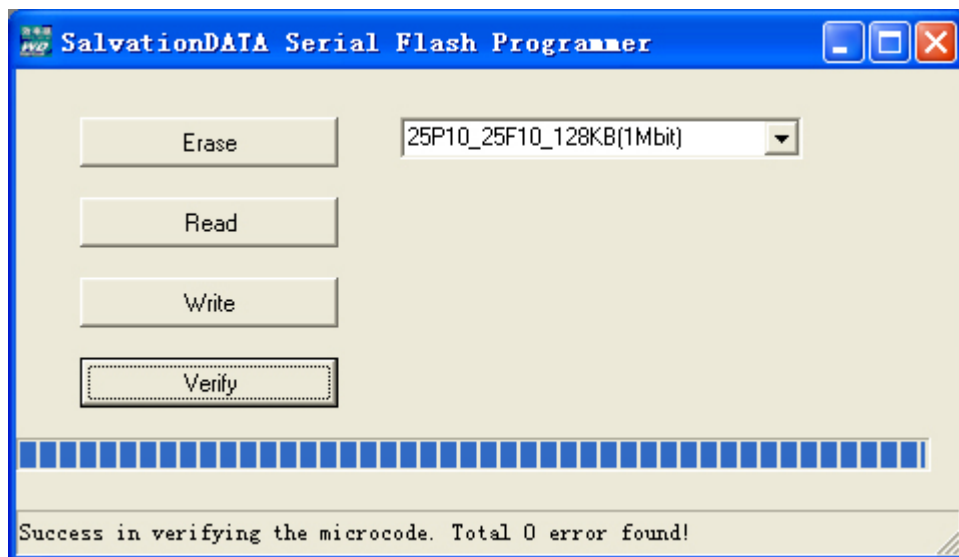
Write operation finished.

Verify



To compare the microcode in use with a defined one for difference; first to locate a target ROM.BIN;

Then the verification will be carried out.



Verification finished.

Special Notices:

Even there are two stations designed on the programmer, you can not operate on two chips in the meantime; means that you can solder only one chip onto the programmer at a time for operation.

WD HDD detailed information

PCB	Firmware Ver.	Model No.	Motor No.	Chip
2060-001113-001	00CPFO	WD400EB	1028	27F
2060-001076-002	22BVA0	WD300AB	1518	29F
2060-001068-001	00BHFO	WD200EB	1012	29F
2060-001100-003	00CSFO	WD200EB	1025	27C
2060-001100-003	32CSFO	WD200EB	1025	29F
2060-001003-001	00BPA1	WD300AB	4066	27C
2060-001003-001	00AUA1	WD300BB	4066	27C
2060-001092-006	00CRA1	WD800JB	1014	29F
2060-001159-006	00DKA0	WD400BB	1051	29P10
2060-001100-001	75CSFO	WD200EB		29F10
2060-001129-001	23DEA0	WD400BB	1033	29F
2060-001092-007	00CAA1	WD400BB	1014	
2060-001189-003	00ETA0	WD800JB	1051	25P
2060-001173-004	00HTA0	WD1600BB		25P
2060-001076-002	00BVA0	WD600AB	1405	29F
2060-001160-001	00DUA3	WD1200JB	1045	
2060-001128-005	00DAA3	WD1200BB	1029	
2060-001092-007	00CCB0	WD1000BB	1014	
2060-001265-001	00GVC0	WD1600JB	1024	

HD Doctor For WD™ License Agreement

READ THE TERMS AND CONDITIONS OF THIS LICENSE AGREEMENT CAREFULLY BEFORE RUNNING THE COMPUTER SOFTWARE HEREIN, AND THE ACCOMPANYING USER DOCUMENTATION (THE "PROGRAM"). THE PROGRAM IS COPYRIGHTED AND LICENSED (NOT SOLD). BY RUNNING THE PROGRAM, YOU ARE ACCEPTING AND AGREEING TO THE TERMS OF THIS LICENSE AGREEMENT. IF YOU ARE NOT WILLING TO BE BOUND BY THE TERMS OF THIS LICENSE AGREEMENT, YOU SHOULD PROMPTLY DELETE THE SOFTWARE AND ACCOMPANYING FILES. THIS LICENSE AGREEMENT REPRESENTS THE ENTIRE AGREEMENT CONCERNING THE PROGRAM BETWEEN YOU AND SALVATIONDATA TECHNOLOGY, INC. (REFERRED TO AS "LICENSOR"), AND IT SUPERSEDES ANY PRIOR PROPOSAL, REPRESENTATION, OR UNDERSTANDING BETWEEN THE PARTIES.

1. License Grant. Licensor hereby grants to you, and you accept, a nonexclusive license to use the Program Discs and the computer programs contained therein in machine-readable, object code form only (collectively referred to as the "Software"), and the accompanying User Documentation, only as authorized in this License Agreement. You agree that you may not reverse assemble, reverse compile, or otherwise translate the Software.

2. Licensor's Rights. You acknowledge and agree that the Software and the User's Manual are proprietary products of Licensor protected under Chinese and International copyright law. You further acknowledge and agree that all right, title, and interest in and to the Program, including associated intellectual property rights, are and shall remain with Licensor. This License Agreement does not convey to you an interest in or to the Program, but only a limited right of use revocable in accordance with the terms of this License Agreement.

3. License Fees. The license fees paid by you are paid in consideration of the licenses granted under this License Agreement. If you received the software for demonstration purposes and/or no fee was charged, this in no way effects the terms of this agreement. The license fees for the PRO version are incurred only once at time of purchase.

4. Term. This License Agreement is effective upon your receiving the software, either on disc or by electronic transfer of any type and shall continue until all copies of the software have been returned to Licensor. You may terminate this License Agreement at any time by returning the Program and all copies thereof and extracts therefrom. Licensor may terminate this License Agreement upon the breach by you of any term hereof. Upon such termination by Licensor, you agree to return to Licensor the Program and all copies and portions thereof.

5. No Warranty. The software is supplied without any warranty. THE PROGRAM, AND THE SOFTWARE CONTAINED THEREIN, ARE LICENSED "AS IS," AND LICENSOR DISCLAIMS ANY AND ALL OTHER WARRANTIES, WHETHER EXPRESS OR IMPLIED, INCLUDING, WITHOUT LIMITATION, ANY IMPLIED WARRANTIES OF MERCHANTABILITY OR FITNESS FOR A PARTICULAR PURPOSE.

6. Limitation of Liability. Licensor's cumulative liability to you or any other party for any loss or damages resulting from any claims, demands, or actions arising out of or relating to this Agreement shall not exceed the license fee paid to Licensor for the use of the Program. In no event shall Licensor be liable for any indirect, incidental, consequential, special, or exemplary damages or lost profits, even if Licensor has been advised of the possibility of such damages. SOME STATES DO NOT ALLOW THE LIMITATION OR EXCLUSION OF LIABILITY FOR INCIDENTAL OR CONSEQUENTIAL DAMAGES, SO THE ABOVE LIMITATION OR EXCLUSION MAY NOT APPLY TO YOU.

7. Trademark. HD Doctor For WD is a registered trademark of Licensor. No right, license, or interest to such trademark is granted hereunder, and you agree that no such right, license, or interest shall be asserted by you with respect to such trademark.

8. Governing Law. This License Agreement shall be construed and governed in accordance with the laws of the People's Republic of China.

9. Costs of Litigation. If any action is brought by either party to this License Agreement against the other party regarding the subject matter hereof, the prevailing party shall be entitled to recover, in addition to any other relief granted, reasonable attorney fees and expenses of litigation.

10. Severability. Should any term of this License Agreement be declared void or unenforceable by any court of competent jurisdiction, such declaration shall have no effect on the remaining terms hereof.

11. No Waiver. The failure of either party to enforce any rights granted hereunder or to take action against the other party in the event of any breach hereunder shall not be deemed a waiver by that party as to subsequent enforcement of rights or subsequent actions in the event of future breaches.

2000-2006 SalvationDATA Technology, Inc.
All Rights Reserved.

Software Warranty, Guarantee and Discount Coupon

HD Doctor For WD Professional Warranty

HD Doctor For WD warranty covers workmanship and defects in material. The Warranty **dose not** cover lost program Discs. The HD Doctor For WD license is a technical license that is bound to the program once the software has been registered and unlocked. Please label the disc and mainframe and keep in a safe place.

HD Doctor For WD Professional Guarantee and Discount Coupon

SalvationDATA Technology, Inc. guarantees that HD Doctor For WD Professional will perform as stated. If HD Doctor For WD is not able to assist in recovering your data, we will apply the purchase price to our in-lab Data Recovery Services (This coupon does not apply to Upgrades. This coupon also cannot be used with any discount offers). Coupon will be honored once, up to one year from the original purchase date, per registered user. User must provide proof of purchase.

Thank you.

Technical Support

If you encounter any problem during installing or using SalvationDATA HD Doctor For WD PRO, please visit us at <http://www.salvationdata.com> for FAQs or quiz via Email for supports. We will do our best providing service to you.

If you are a registered user of SalvationDATA products, please quote us your information when you face us for services, we will treat it as top priority.

Thank you again for using SalvationDATA product.