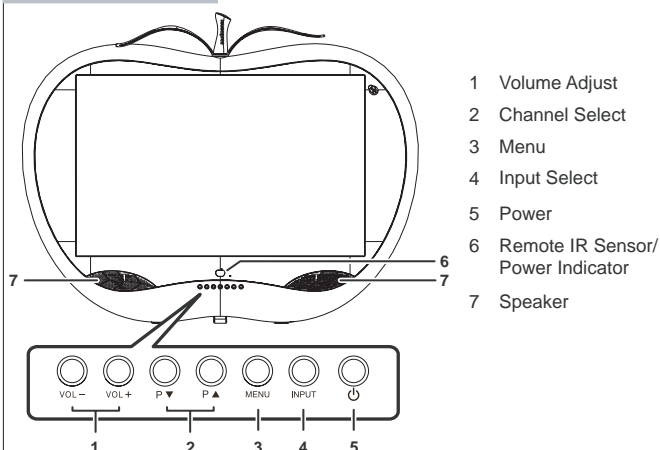
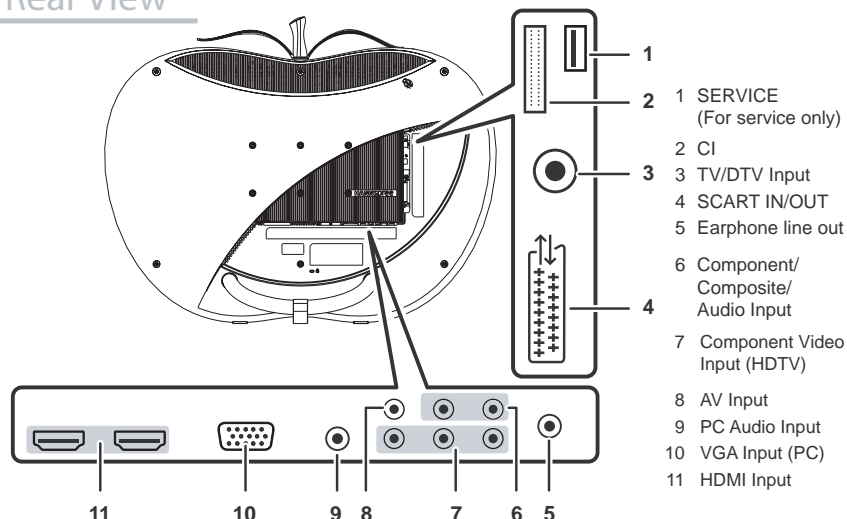


This guide is designed as a reference to help you start using your LCD TV quickly. Please refer to the User's Manual for more detailed installation and safety instructions.

Front View

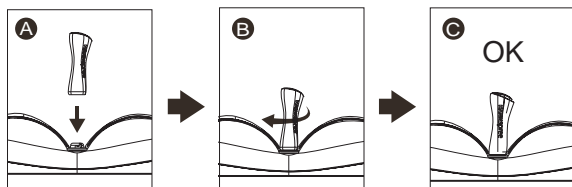


Rear View



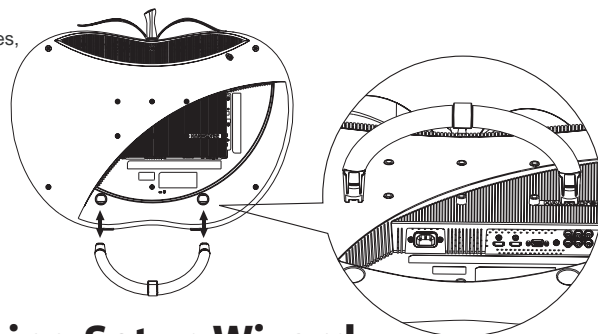
Assembling the stem & stand base

1. Insert the stem into slot then turn 45 degrees clockwise to complete installation.

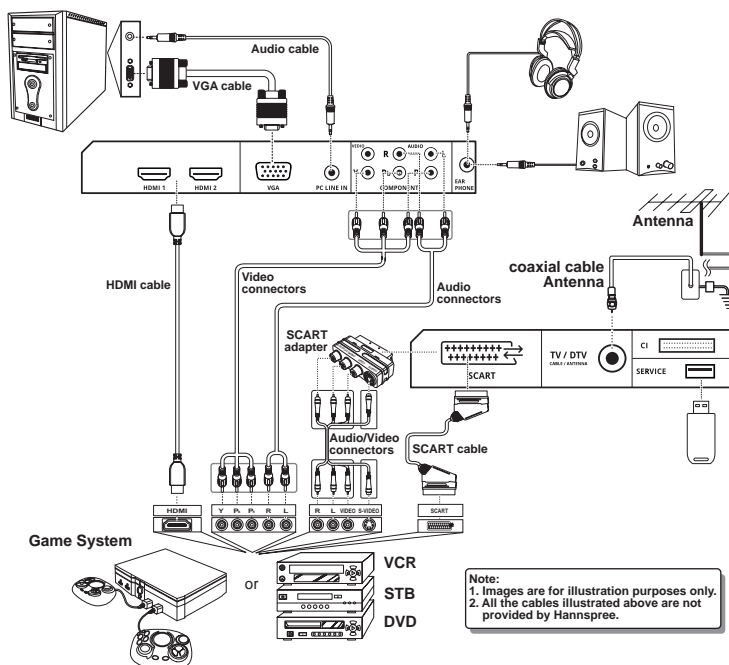


Note: the sleeves are for design only and the TV cannot be carried by it.

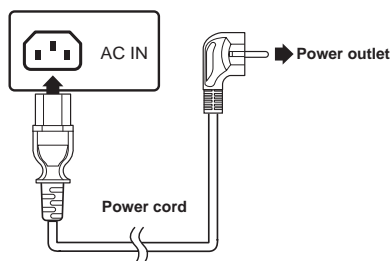
2. Carefully place the TV face down on a soft and flat surface (blanket, foam, cloth, etc) to prevent and damage to the TV.
3. Press the stand lock on both sides, insert the stand into the holes.
4. If want to disassembling the stand, press the stand lock on both sides, remove the stand from back cover of TV.



Making Connections



Connecting the Power Cord



1. Plug the power connector into the AC IN input jack on the rear of the TV.
2. Insert the AC power plug at the other end of the power cord into a power outlet.
3. Press the Power button on the control panel or the remote control to turn the TV on.

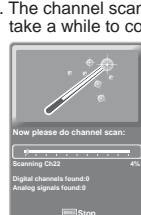
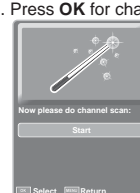
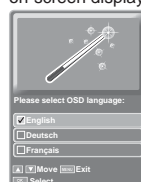
Note: Images are for illustration only and may vary according to the model and region.

Running Setup Wizard

The Setup Wizard is displayed on the screen when you turn on your LCD TV for the first time.

Note: Use the \wedge , \vee to move through the menu. Press OK to select.

1. Select the Language for the on-screen display (OSD).
2. Select the TV mode.
3. Select the Country.
4. Press OK for channel scan.
5. The channel scan may take a while to complete.
6. Press Menu when channel scan is completed.

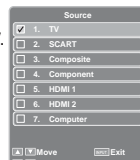


Watching Your TV

Selecting Your Content Source

You can watch cable or broadcast TV, play DVD or connect to your PC. To display the Input Source menu, press the **INPUT** button on the remote control or the **INPUT** button on the LCD TV. To select the source signal:

- Press the numeric buttons on the remote control; Or
- Press the \wedge , \vee buttons to move, then press **OK** to select.



Selecting Channels

- Press the **P▲** or **P▼** button on the remote control or the LCD TV to increase / decrease the program number; Or
- Press the numeric buttons on the remote control.