

Product User's Guide

Ver. 1.0



Model : AT380

ATID Co., Ltd

Disclaimer

ATID is registered trade mark of ATID Co., Ltd.

Si303, Si203, AT880, AT280, AT980 and AT380 is registered trade mark of ATID Co., Ltd. All other trademarks and trade names referred to herein are property of their respective owners.

Microsoft Windows®, Windows® 2000, Windows® CE .NET, Windows® NT, Windows® XP, Windows® and Embedded Handheld are registered trademarks of Microsoft Corporation.

ATID Co., Ltd.

#1205, Byuksan/GyungIn Digital Valley II, #481-10,

Gasam-Dong, Gumchon-Gu, Seoul, Korea

Tel: +82-2-544-1436

Fax: +82-2-2113-0040

www.atid1.com

Table of Contents

| | |
|---|----|
| Table of Contents..... | 3 |
| Chapter1. Caution when using ATID PDA Product..... | 6 |
| 1. How to use the battery correctly..... | 6 |
| 2. Caution when using ATID PDA Product..... | 6 |
| Chapter2. Products compositions..... | 7 |
| 1. Package components..... | 7 |
| 2. Each Part Name & Function..... | 8 |
| Chapter3. Basic Functions..... | 10 |
| 1. Power and Battery..... | 10 |
| 1.1 Power On and Off (All Products are common)..... | 10 |
| 1.2 Checking Battery Gauge..... | 12 |
| 1.3 Backup Battery..... | 13 |
| 1.4 Dispose of Battery..... | 13 |
| 2. System Reset..... | 14 |
| 2.1 Soft Reset(Warm Reset/Warm Boot)..... | 14 |
| 2.2 Hard Reset(Cold Reset/Cold Boot)..... | 14 |
| 2.3 Initializing System..... | 15 |
| 3. Using Micro SD Card..... | 16 |
| 4. System Settings..... | 17 |
| 4.1 Setting Brightness..... | 17 |
| 4.2 Screen Calibration..... | 17 |
| 4.3 Setting Volume and Sounds..... | 18 |
| 4.4 Setting Data and Time..... | 18 |
| 5. Using keypad..... | 20 |
| 5.1 Using keypad..... | 20 |
| 5.2 Inputting Data..... | 20 |
| 5.3 Using <Blue> Button..... | 20 |
| 6. Using stylus..... | 21 |
| 7. Using ActiveSync Program..... | 22 |
| 7.1 Installing Microsoft ActiveSync Program..... | 22 |
| 7.2 Connecting PC to PDA..... | 23 |
| 7.3 Transmitting Data..... | 24 |
| 8. Firmware Upgrade..... | 26 |
| Chapter4. Optional Module..... | 27 |
| 1. 1D or 2D Barcode Scanner..... | 28 |
| 1.1 Scanning Barcode..... | 28 |
| 1.2 Setting Barcode Emulator..... | 28 |
| 1.3 Setting Barcode Symbology..... | 31 |
| 1.4 Barcode Scanning Beam Position..... | 32 |
| 2. Using Wireless Lan..... | 34 |
| 2.1 Connecting to Wlan..... | 34 |
| 2.2 Setting Wlan Manually..... | 34 |
| 2.3 Checking WLAN Information..... | 35 |
| 3. Using Bluetooth..... | 36 |
| 3.1 Bluetooth Beginning and Closing..... | 36 |

| | |
|--|----|
| 3.2 Bluetooth Pairing..... | 39 |
| 3.3 Bixolon SPP-R200 Printer Demo..... | 42 |
| Chaptor5. Appendix..... | 44 |
| Specification with AT380..... | 44 |

Copyright and Agreement

- This manual is subject to copyright protection along with all relevant rights.
- No part of this document or the procedures described therein can be copied, reproduced, changed, translated or transmitted in any form or by any means without prior written permission of ATID Co., Ltd. or its wholly owned subsidiaries.
- ATID reserves the right to change any contents of this manual at anytime without prior notice.
- There are maybe some differences between the contents of this manual and the actual behavior of product.

This manual is written for the person who is responsible for installing, configuring, and maintaining the AT380 PDA. Read and follow all warnings and cautions in this document before you handle and operate ATID equipment

Safety Information

Read and follow all warnings and cautions in this manual before you handle and operate ATID equipment. If you do not follow the safety warnings and cautions, you might be seriously injured, and the equipment and data are also might be damaged.



Warnings!

A warning requires you must pay attention to the operating procedures, practices, conditions, and statements strictly, or might be injured seriously.



Cautions

A caution alerts you that you must be observe strictly when you operating procedure, practicing, configuring, for preventing from damage and destruction of equipment, and loss of data.



Note

A note provides you the information which you must needs while you using Si303

Chapter1. Caution when using ATID PDA Product

Before you handle and operate your AT280 and other ATID PDA Products, Please read through and familiar with the contents of this manual.

1. How to use the battery correctly

- When you dropped the main body or battery in water, please do not put it on the stove or heater for drying. Just keep it in natural temperature or contact with purchase place.
- Please do not take the metal object to approach to the terminal of battery
- If you do not use the battery for a long time after charging, please keep it at room temperature.
- According to the life of battery and the processing time of its using, the buffering time can be shortened. In this case, please contact your dealer.
- You have to charging the device with the provided adaptor from factory.

2. Caution when using ATID PDA Product

- User careless or products repair may would damage the stored data. Manufacture is not responsible for this damage, so important data should be kept separately
- If your AT280 has problem, do not try to repair or disassemble the product arbitrarily, please contact customer service center.
- Do not use your AT280 where have electromagnetic wave or the risk may occur such as hospital, plane so on.
- A high temperature or high humidity environment will causes trouble, Please note that.
- Please do not using other sharp object to touch the screen, otherwise it might be get damaged or not working properly.
- Please be careful not to touch the metal paper cutting saw tooth, so as not to get injured
- If smell odors, occurs smoke or noise during use product, immediately disconnect the charger and off the power, then Please contact with customer service center
- If you have any other questions during use, please contact the customer service center

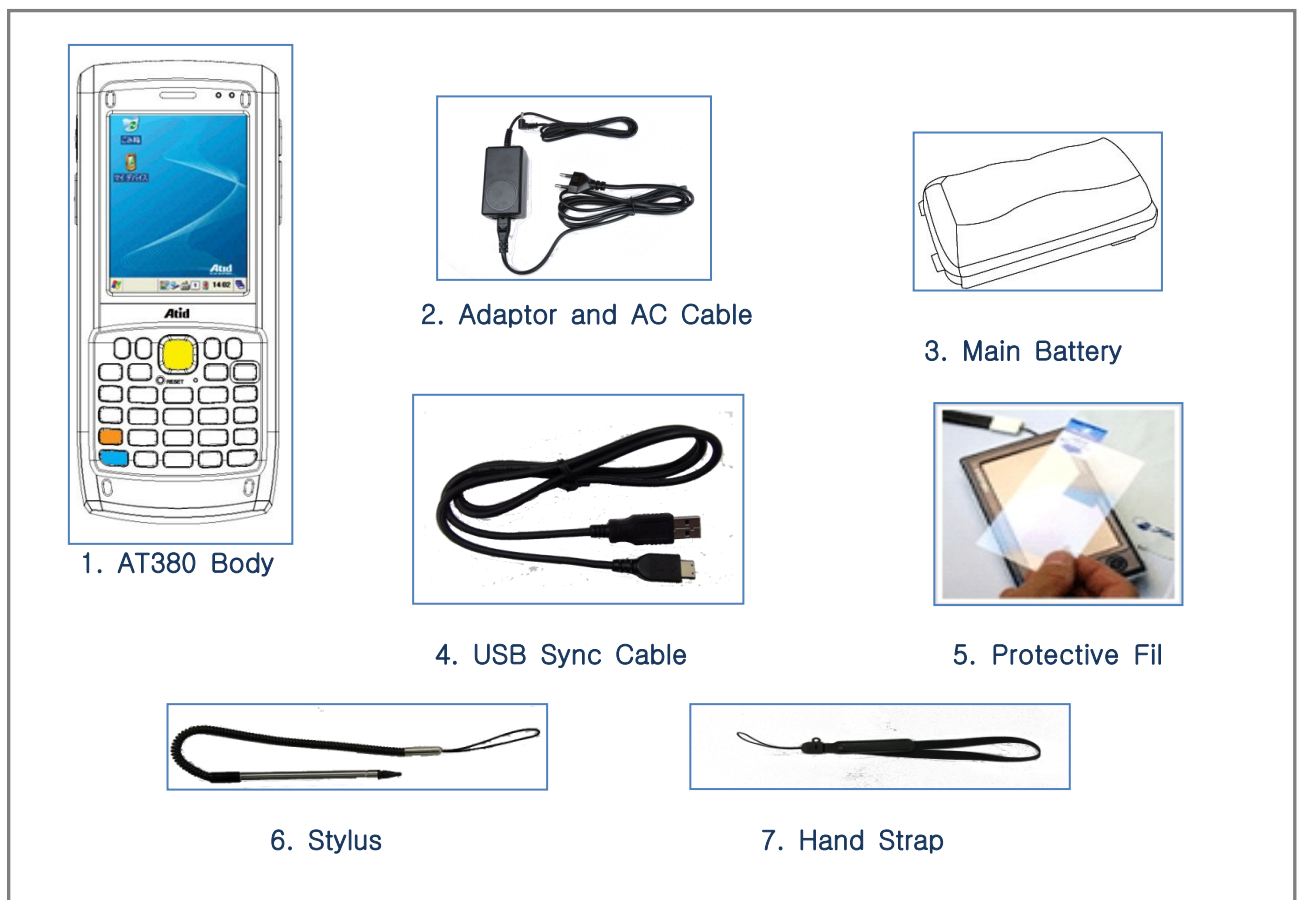
Chapter2. Products compositions

AT280 mobile computer is a small, ergonomically designed PDA, which built on the Microsoft window CE 5.0 Operating System. The PDA could equip with Barcode Scanner and so on devices as optional items. Its various function applied to Industry, Enterprise, Logistics and so on, can be used extensively in many fields.

1. Package components

After opening the product packaging box, check the items listed as below:

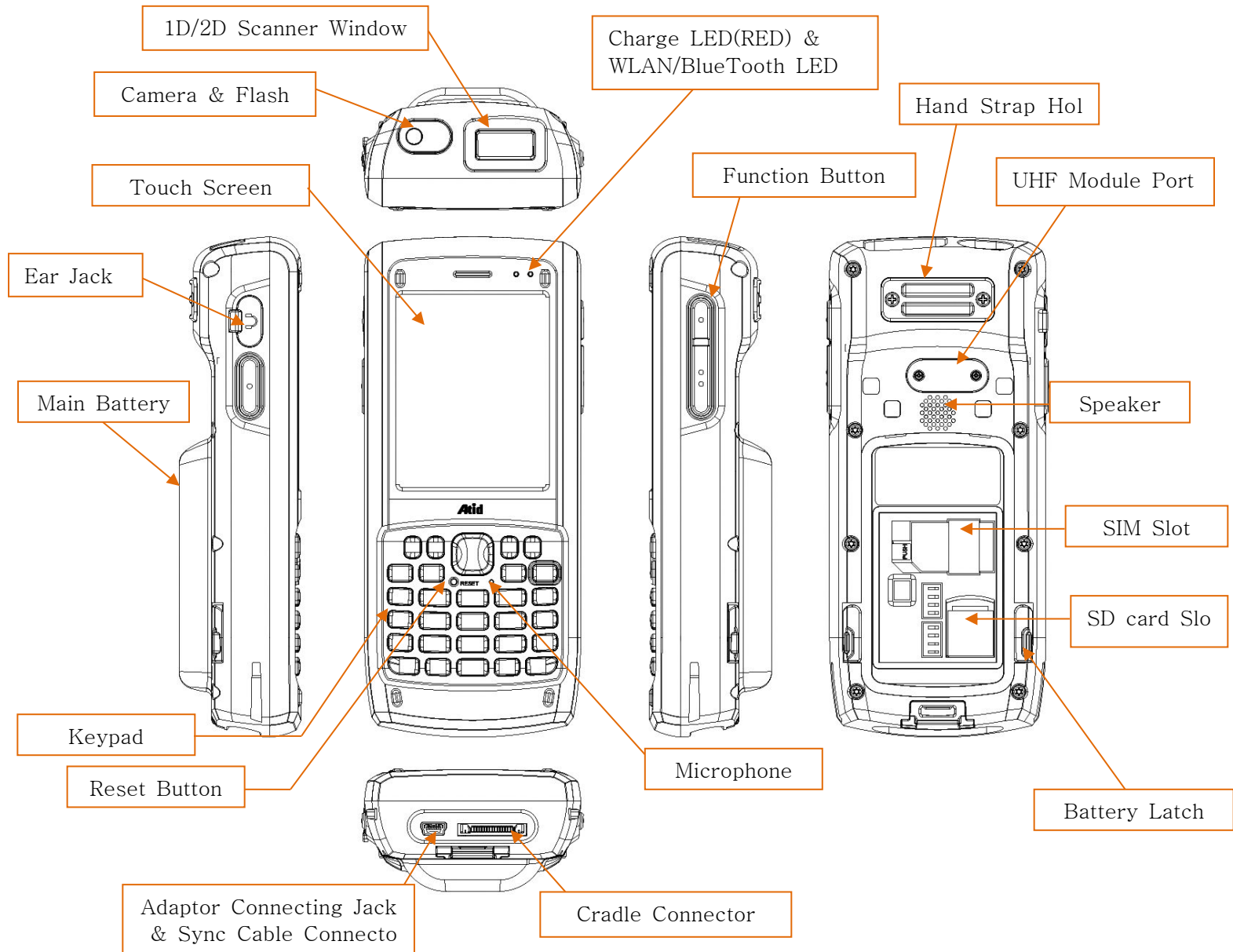
◆ MODEL : AT380



*If there is missing or defective products on the above, please contact the customer support center or your place of purchase.

2. Each Part Name & Function

◆ MODEL : AT380



| Part | Descriptions |
|---|--|
| 1D/2D Scanner Window (Option) | Laser beam emitted through this window. Please be careful the foreign substances and preventing from the damage. Warning! Do not look at the laser beam directly. |
| UHF Module Port | Enable you to install a UHF 900Mhz tag reader module. |
| Reset Button | Enable you to perform a Warm Reset, Press <Power>button simultaneously, enable you to perform a Hard Reset. |
| Microphone | Enable you to conduct communication. |
| WLAN/Bluetooth LED | Indicates WLAN & Bluetooth power on-off status.(Blue) |
| Battery Latch | Enable you to detaching and attaching the main battery. |
| Main Battery | Enable to supply the power to the product. |
| Speaker | Build-in speaker, which could emit various sound effects. |
| Sync Cable Connector | Enable you to connect and send data to PC via USB sync cable. |
| Ear Jack | Enable you to connect to earphone. |
| Charge LED | Charge LED will be Red or Orange color when the battery is charging, or will be green when it is charged completely. |
| Adaptor Connecting Jack & Sync Cable Conector | Enable you to connect to adaptor which provided from factory. |
| Cradle Connector | Enable you to connect to PC or charging the battery while using cradle. |
| Key Pad | Enable you to input key value (number, alphabets, symbol), or executing assigned programs. |
| Touch Screen | Display running programs, and could execute, use, and exit programs via using stylus to touch the screen. |
| Hand Strap Hole | Enable you to attach a hand strap or a stylus for the convenience of using, while need to use the device for a long period time. |

Chapter3. Basic Functions

1. Power and Battery

AT380 battery is composed of main battery and backup battery. A main battery supplies the power to the system and RAM which could keep save the data. A backup battery could keep save the data of RAM when the main battery discharged completely.

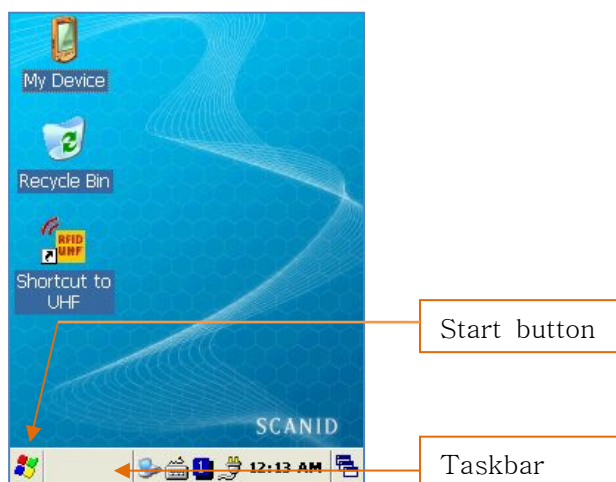
Main Battery: 3.7V 5,200mA Lithium –ion

Backup Battery: 3.7V 80mA Lithium – ion polymer

Connecting adaptor to the PDA adaptor connecting jack, and check if the “Power LED” is Red, and then charging the power completely until it get into Green.

1.1 Power On and Off (All Products are common)

Press <Power> button one time, the device will enter low-Power mode (Sleep Mode) under t he system is started and the following window is displayed on the desktop or other programs is running in the system. Press <Power> button once again could activate the system.



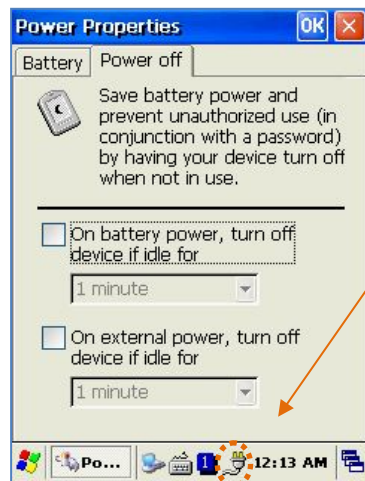
Taskbar: Display the currently running programs.

Start button: Activates the start menu and then execute a program.

➤ Power off automatically

The device has been powered but has not been used for a period of time, then the system will enter low-power mode (sleep mode) automatically. You could set the sleep mode time at the power management so that could save power and prolog the battery life.

[Start Button] -> [Setting] -> [Control Panel] -> [Power Management] -> [Power Off]



Power Icon

- You can also double click <Power> Icon to enter this interface.
- You can also press the <Power> button to activate the system, when the device turned off cause get into the sleep mode.

➤ Battery Discharging

If the main battery discharge completely, the system will not turned on, the device will get into low-power mode (sleep mode) automatically, and even press the <Power> button, the system will not be turned on. In this case, you should charge the main battery or connect the adaptor to the adaptor connecting jack of main body, then press the <Power> button to turn on the system.

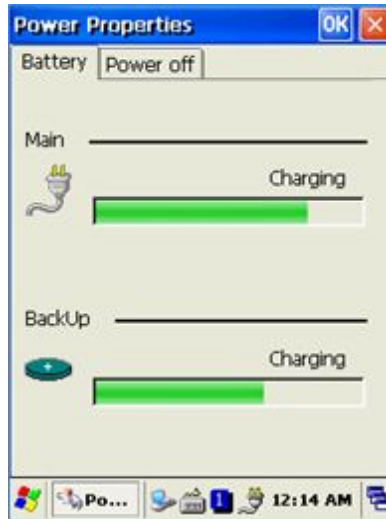
1.2 Checking Battery Gauge

- **Note:**

Battery life is largely affected from the user using method and surrounding environments. A 5,200mA battery is usually needs 8 ~ 12 hours to get charged completely.

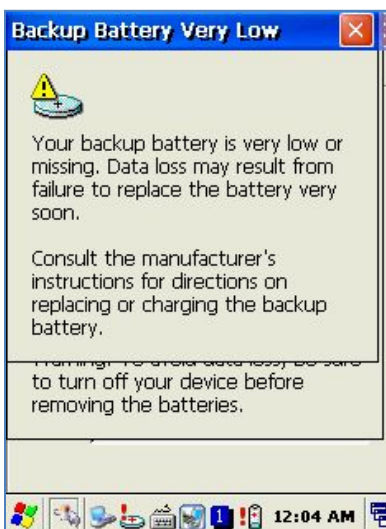
➤ **Checking Battery Gauge**

[Start Button] -> [Setting] -> [Control Panel] -> [Power Management] -> [Battery]



➤ **Low Battery Warning**

If the remaining battery gauge cannot support the system running any more, a low power warning message window will be popped up on the screen. In this case, you need to press the <Power> button to turn off the power, and to charge the battery as soon as possible.



1.3 Backup Battery

A backup battery could safely keep the RAM data, even the main battery discharged completely.



Caution:

If the main battery and the backup battery are both discharged, the RAM data will disappear.

Among the running programs, the RAM data will disappear in which are using, and the sy

1.4 Dispose of Battery

You need to purchase a new one if the battery damaged or reached its end of life.



Warning!

Please dispose the used batteries in a designated place.

2. System Reset

If there is no response from the system or an application is locked up and stops responding, and when you want to upgrade the firmware, reset the system is maybe necessary.

2.1 Soft Reset(Warm Reset/Warm Boot)

When do you need to perform Soft Reset?

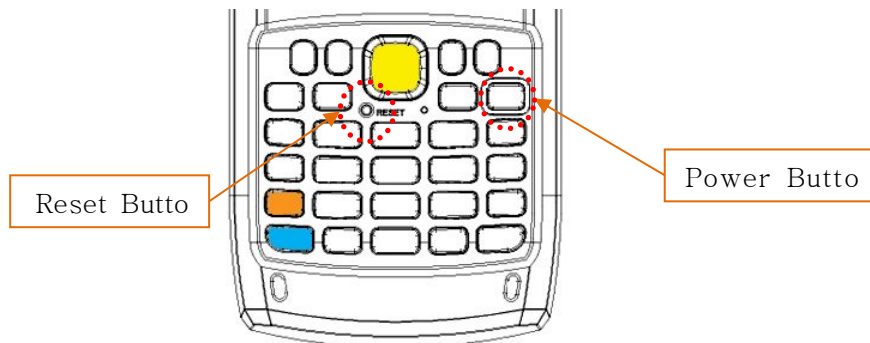
If there is no response for your command from the system, it calls (Hang-up). In this case, you need to perform a soft reset. Soft reset will end programs and the user memory region will be deleted, but installed programs and data, and so on, are not affected.

[Soft Reset Procedure]

Using the stylus pen to press <Reset> button briefly, the system will restarting again, after the screen turns off shortly.

[Soft Reset Result]

- System will be restarting.
- Operating System will be restarting (Windows CE).
- Desktop will appear in about ten seconds.
- User's changed registry information, copied files and Installed programs will be restored.



2.2 Hard Reset(Cold Reset/Cold Boot)

When do you need to perform Hard Reset?

Hard Reset, which is also called **Cold Reset**, enables to initialize hardware completely. User's installed programs, copied files and registry values will keep remained even AT380 performed Hard Reset, but the real time and date will be initialized. So you need to reset the time and date after performed Hard Reset.

You need perform Hard Reset when the Soft Reset cannot restore the system.

[Hard Reset Procedure]

Using stylus pen to Press <Power> Button and <Reset> Button simultaneously, the system will restarting again after the screen turns off shortly.

[Hard Reset Result]

- System will be restarting.
- Operating System (Windows CE or Mobile) will be loading and restarting.

- Desktop will appear in about ten seconds.
- Time and date window will be popped up and need to reset it.

2.3 Initializing System

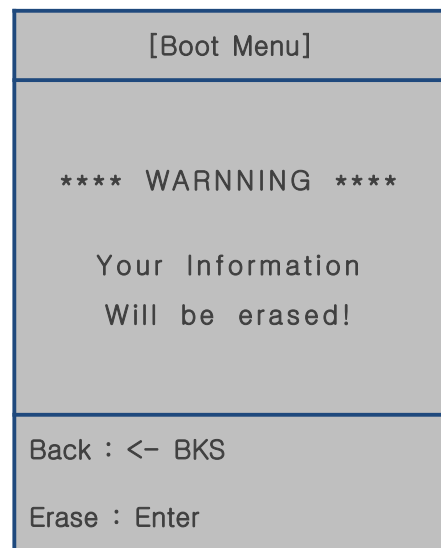
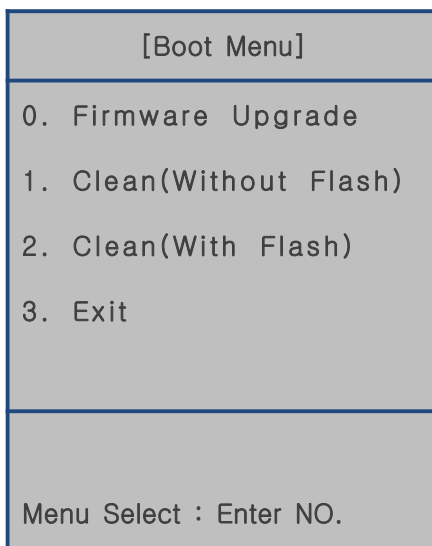
Enter [Boot Menu] and do what you want, when in the situations as below:

1. When you need to restore the original registry information, which has been changed.
2. When you need to initialize “My device” storage spaces.
3. When you need to initialize “Flash Disk” storage spaces.
4. When you need to initialize system to factory default settings.

You can also press <Power> button and <Fun> button simultaneously, and then press <Reset> button to perform **Hard Reset**.

[Boot Menu] window would appear in a couple of seconds.

Warning!
Except for [Clean(Without Flash)], please do not use other functions.
The system might be work not properly if you use other functions on the [Boot Menu].

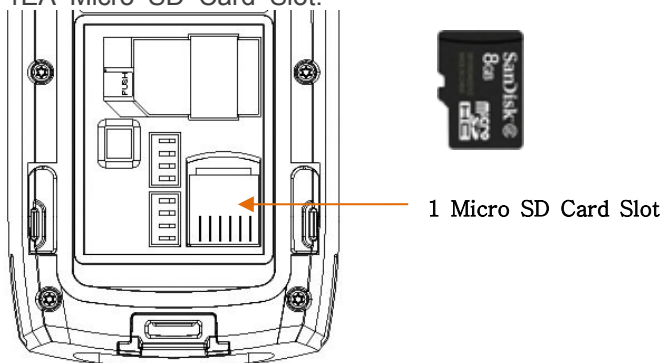


Using<1>, <2> buttons to select Clean System, then press <Enter> button.

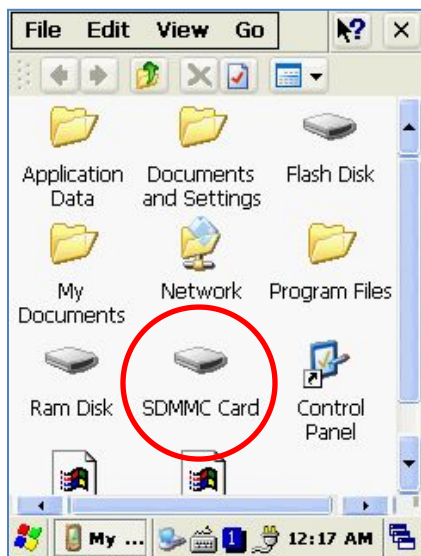
0. **Firmware Upgrade** – OS Update
1. **Clean (Without Flash)** – Initializing “Mydevice” region.
2. **Clean (With Flash)** – Initializing to factory default settings.
3. **Exit**

3. Using Micro SD Card

The image as below is battery compartment of AT380, and there are 1EA SIM Card Slot and 1EA Micro SD Card Slot.



You can find the Micro SD Memory Card icon when executing the file explorer, after the Micro SD



4. System Settings

4.1 Setting Brightness

Brightness is already set 80% at the factory, and brightness is the biggest consume part of the power, so you might need to adjust it to your actual need.

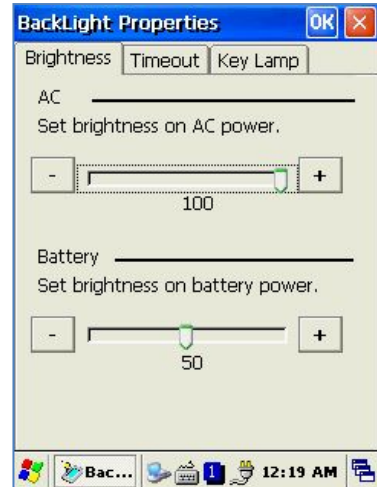
[Setting Brightness]

1. [Start Button] -> [Setting] -> [Control Panel] -> [Brightness]
2. [MyDevice] -> [Control Panel] -> [Brightness]

밝기: Enable you to adjust brightness.

끄기: Enable you to adjust the timing of turning off brightness.

키램프: Enable you to adjust the timing of turning off key lamp.

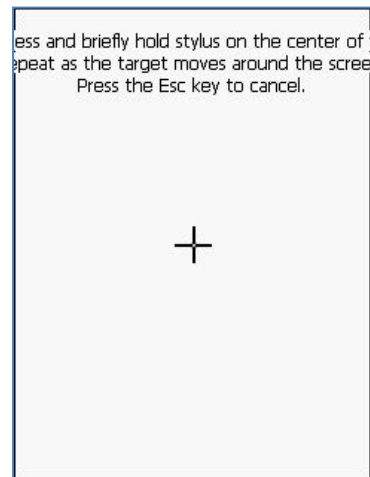


4.2 Screen Calibration

At first beginning of using the device after purchasing or need to use the device for a long period time, if you cannot select the place where you touched with stylus, you need to reset the coordinate calibration values.

Touch screen calibration

[Start Button] -> [Setting] -> [Control Panel] -> [Stylus] -> [Calibration] -> [Recalibration]



Press and hold stylus pen briefly on the center of cross symbol, and repeat 5 times as

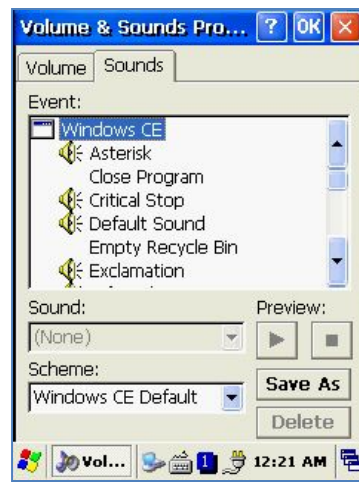
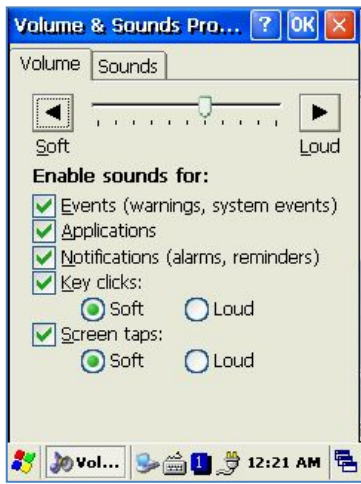
it moves around the screen. The screen counts 30 seconds after calibrating, and you can finish the recalibration to touch screen wherever you want, if you do not any action, the screen will automatically finish the recalibration of itself.

4.3 Setting Volume and Sounds

Volumes is already set 80% at the factory, and you can readjust you need volume at control panel ->"Volume and Sounds"

Setting Volume and Sounds

[Start Button] -> [Setting] -> [Control Panel] -> [Volume and Sounds]



4.4 Setting Data and Time

[Start Button] -> [Setting] -> [Control Panel] -> [Date and Time]



Setting Year:

Double Click the year, and click the up and down arrow button to set year



Setting Month:

Double Click the Month or Click L/R arrow button to set Month.



Setting Day:

Click the day directly to set day.



Setting Time:

Click AM/PM, Time area directly, using up and down arrow button to set Time.



Setting Time Zone:

Click up and down arrow direction to select time zone and click apply button.

5. Using keypad

Keypad enables you to input numbers, alphabets and special symbols. And can also execute other set function with <Blue> and <Orange> buttons.

5.1 Using keypad

If you'd like to change the current input language, can press <Orange> button as below steps:

[Numeric] -> [Lowercase] -> [Uppercase]



Click the input language icon on the taskbar is also can change

5.2 Inputting Data

Numeric Keypad Mode: Press <Orange> button or keypad icon on the taskbar to change to the numeric mode and directly press number on the keypad.

Alphabet Keypad Mode: Press <Orange> button or keypad icon on the taskbar to change to the Lowercase or Uppercase and directly press alphabets or special symbols on the keypad. Each button has 2 ~ 3 letters or symbols. Press the button once, the first letter or symbol will be inputted, press twice continuously, then the second letter or symbol will be inputted, and the third letter or symbol need to press button three times continuously.

5.3 Using <Blue> Button

Press <Blue> button and other buttons simultaneously can activate functions as below:

| Blue + button | Descriptions |
|---------------|---|
| <1> ~ <9> | Enable you to input <F1>~<F9> Functions Keys. |
| <.>, <0>, <_> | Enable you to input <+>, <000>, <-> symbols. |

6. Using stylus

You can tie the stylus to the hand strap hole, so that enable you to use the stylus as like a mouse on a PC



Use Stylus to:

- Select a letter on the soft keypad.
- Select a program on the desktop or taskbar.
- Select button, zone or tab bar in a window box or program.



Caution:

Please do not use sharp objects on the touch screen. Use only supplied stylus, otherwise would bring seriously damage to the touch screen.

7. Using ActiveSync Program

ActiveSync program could synchronize between the PC and PDA device, so that enable you to perform program installing, copy, transition, delete and so on operations.

7.1 Installing Microsoft ActiveSync Program

Download the latest version of ActiveSync program from Microsoft **Windows CE**. Website, and install it to your PC.

ActiveSync: Windows XP

Download Address: <http://www.microsoft.com/downloads/>.

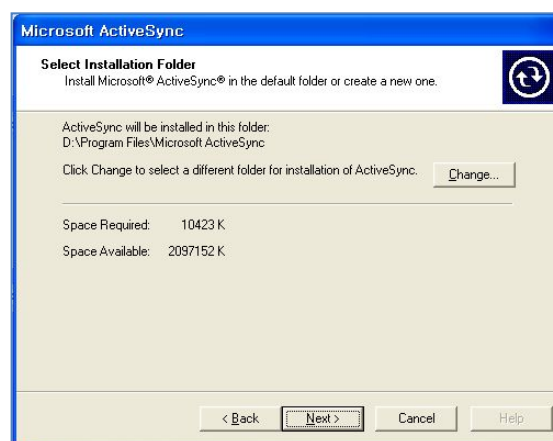


Caution:

You must use ActiveSync v3.7 version or above.



Click [Next] Button.



Designate installation folder, then click < Next> button.



The installation was finished, and then use the USB cable to connect to the USB port on the computer; ActiveSync will automatically detect the device connection.

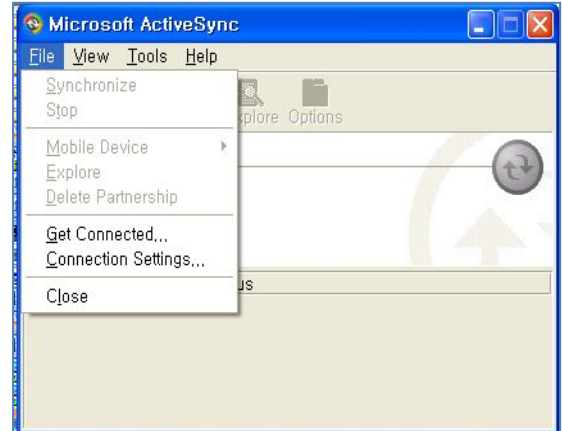
7.2 Connecting PC to PDA

Setting PC

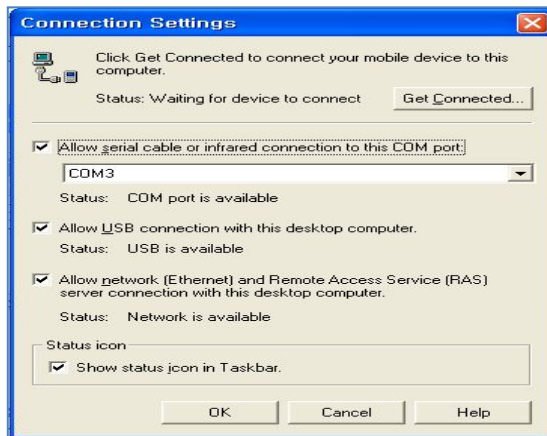
[Start button] -> [Programs] -> [Microsoft ActiveSync]



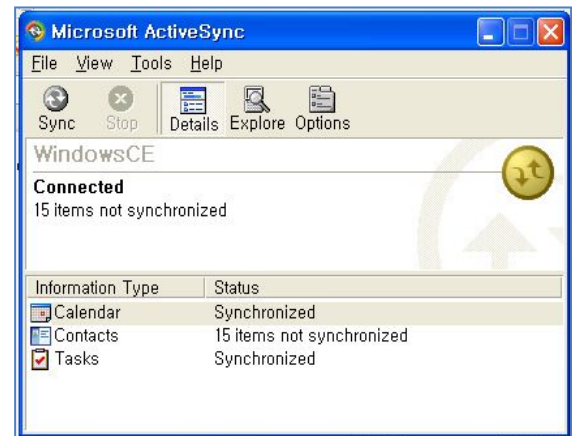
Executing Microsoft ActiveSync program



Click [File], Click [Get Connected].



Select <Allow USB connection with this desktop computer>, press OK button.



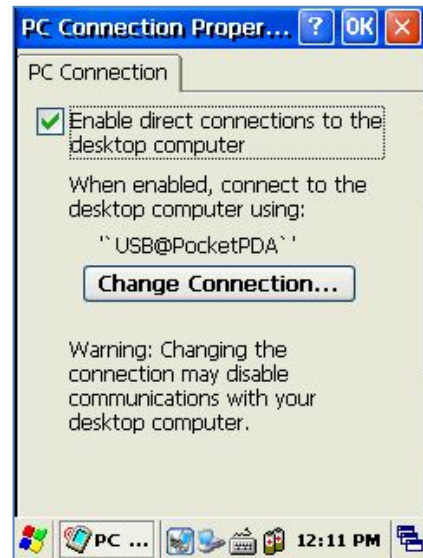
ActiveSync connected to PDA

Setting AT280 PDA

[Start Button] -> [Setting] -> [Control Panel] -> [PC Connection]



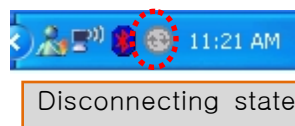
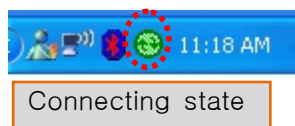
Double click PC Connection icon



To check if set to connected to USB Sync cable

7.3 Transmitting Data

Connect USB cable to PC or Device.

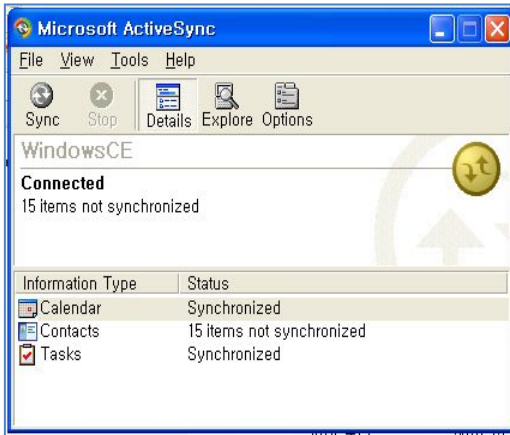


You can check the ActiveSync connecting state on the taskbar.

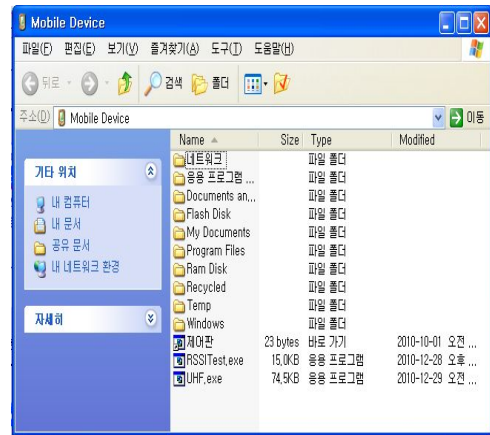
< Windows XP >



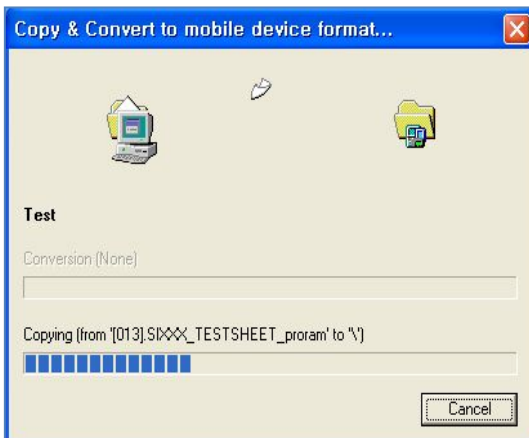
Start button/Programs/Microsoft ActiveSync



After ActiveSync connected, click Explore button.



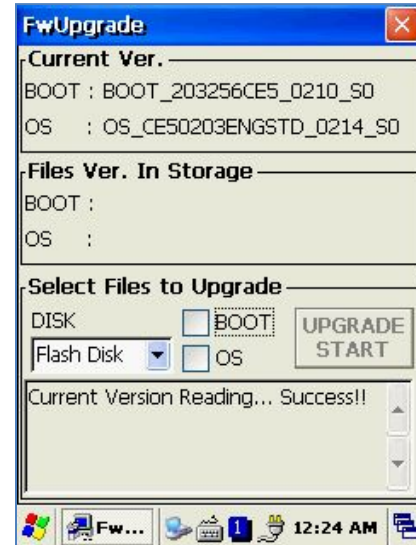
Designate transmitting file path.



Transmit files.

8. Firmware Upgrade

[Start Button] -> [Setting] -> [Control Panel] -> [Firmware Upgrade]



Chapter4. Optional Module

AT380 provided variety of optional modules and in this chapter will provide you the information of each module.

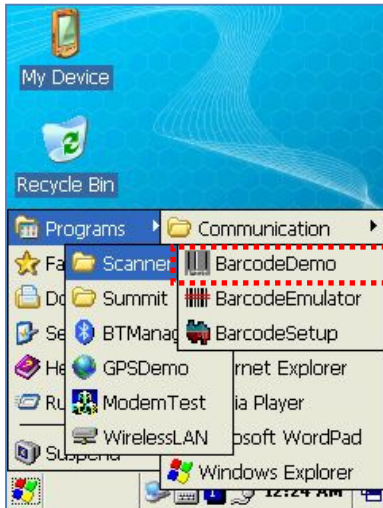
Optional modules as below:

1. **Barcode Scanner**
 - 1D Laser Barcode Scanner
 - 2D Imager Barcode Scanner
2. **Wireless LAN – 802.11 a/b/g**
3. **Bluetooth**

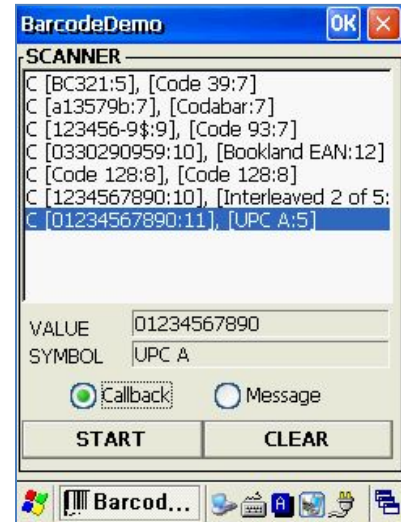
1. 1D or 2D Barcode Scanner

AT280 enable to equip with a compact image engine, which could recognize all the 1D and 2D barcodes.

1.1 Scanning Barcode



Start Button/Programs/Demo Apps/Scanner/[BarcodeDemo](#)



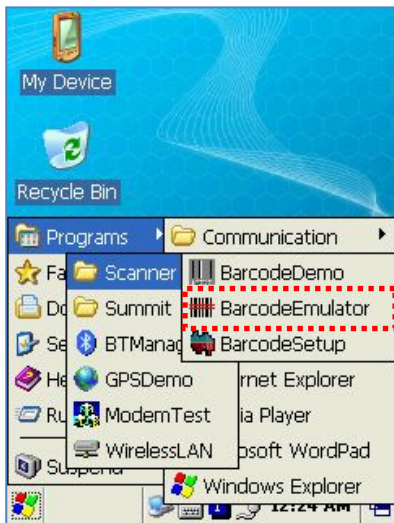
Press Scan Buttons to Read Barcode.

1.2 Setting Barcode Emulator

Barcode Emulator program enables you to set the barcode value input type, scan button, scan sound on and off so on, and could input the scan values to any program (such as Web program, WordPad program so on) where located the cursor.

Executing Barcode Emulator

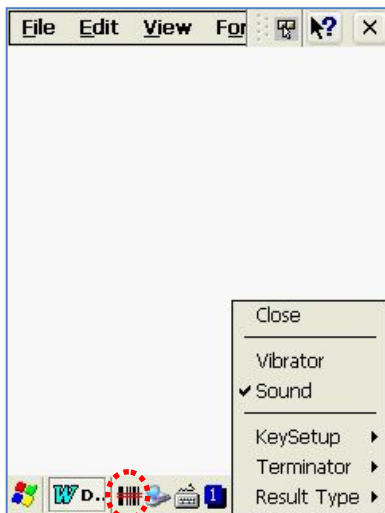
[Start Button] -> [Program] -> [Demo Apps] -> [Scanner] -> [BarcodeEmulator]



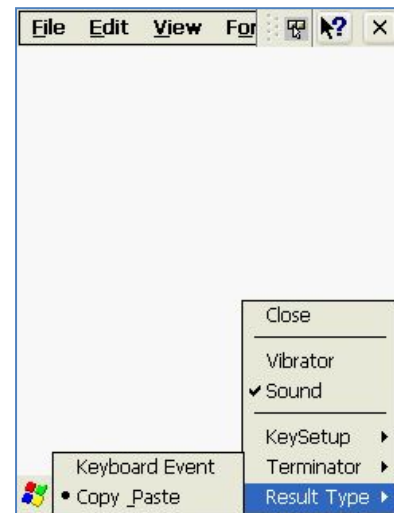
Run Barcode Emulator Program



Barcode Emulator Icon will be shown on the taskbar.



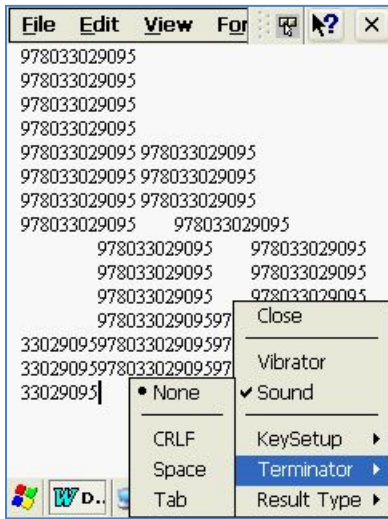
Run WordPad Program, then click the Emulator Icon



Result Type

Keyboard Event: Barcode inputted one by one.

Copy Paste: Barcode will be stored in clipboard and shown at paste way.



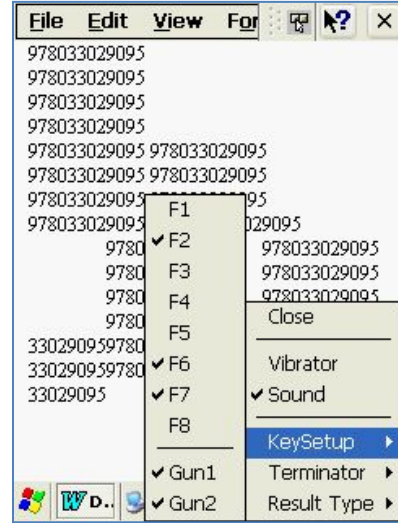
Terminator

None:Not input terminal barcode value.

CRLF: Barcode value will include an "Enter"

Space: Barcode value will include a "Space"

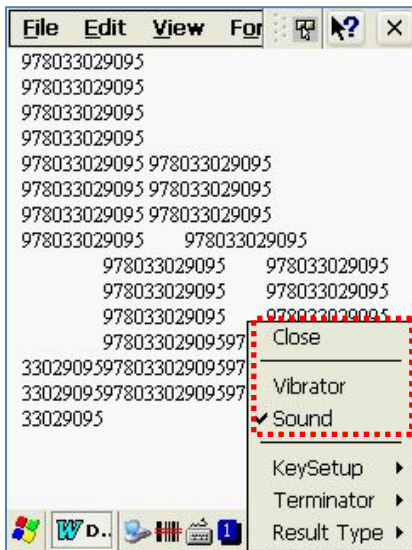
Tab: Inputting type as same as Tab Key Function.



Key Setup

F1-F8 Key: Hardware Keypad

Gun1, Gun2: Gun Trigger



Sound: Set sound ON/OFF after scanned barcode

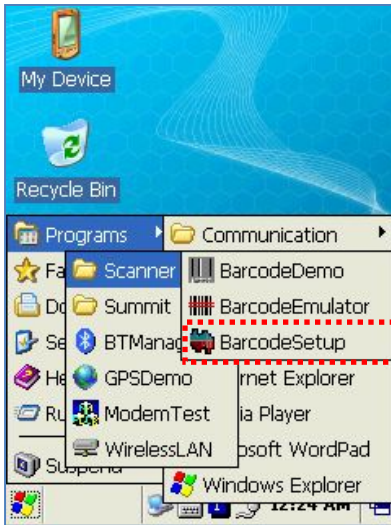
Vibrator: Set vibrator ON/OFF after scanned barcode

Close: Exit Emulator Program

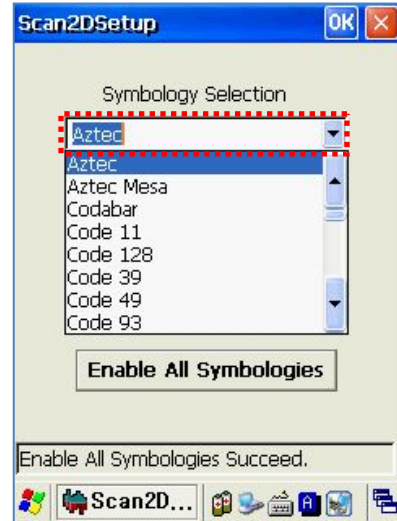
1.3 Setting Barcode Symbology

AT280 enables you to set the various barcode by using barcode symbologies program.

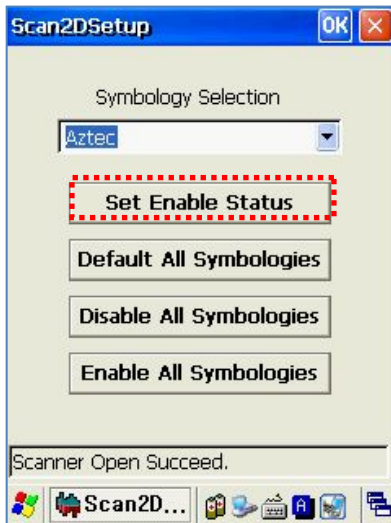
[Start Button] -> [Program] -> [Demo Apps] -> [Scanner] -> [BarcodeSetup]



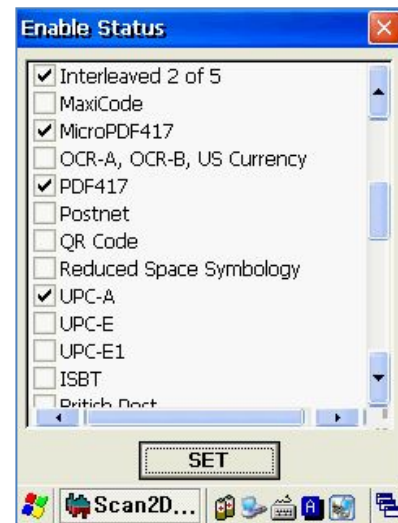
Run BarcodeSetup Program.



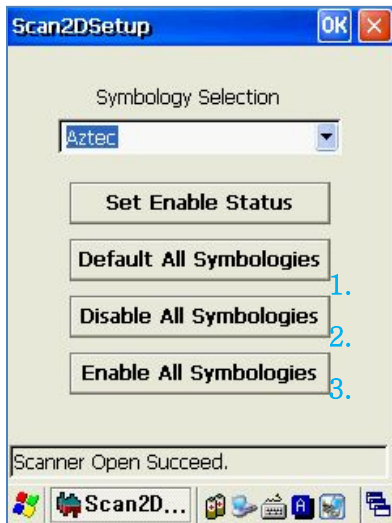
Set Barcode Type in detail.



Click Set Enable Status button

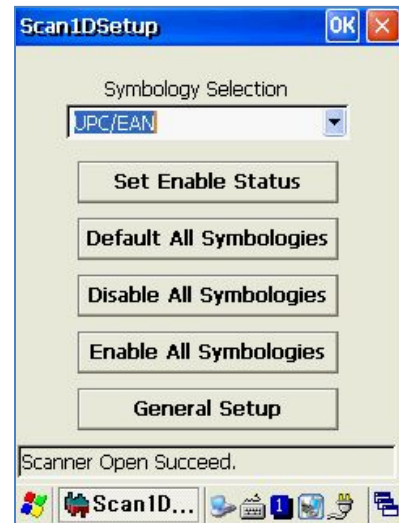


Make a check mark on the barcode which you want to use, and then click <SET> button.



2D Symbology Selection:

1. Initialize all the symbologies to factory default value.
2. Unable to read all the symbol ogies.
3. Enable to read all the symbol ogies.



1D Symbology selection:

1. Initialize all the symbologies to factory default value.
2. Unable to read all the symbol ogies.
3. Enable to read all the symbol ogies.
4. Set a level that enable to read more than two symbologies si multaneously.

■ Warning!

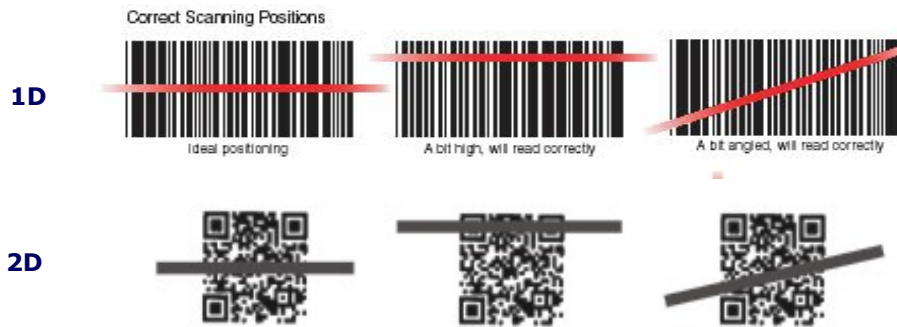
Please do not look directly into the laser beam of barcode, or it may do harm to your vision.

1.4 Barcode Scanning Beam Position

1. Remove the protective film from the window of barcode.
2. Executing the **BarcodeDemo** program.
3. Emit laser beam to the barcode.
 - Adjust the distance according to the size of barcode.
 - Barcode will stop automatically in five minutes if out of the Barcode reading range.

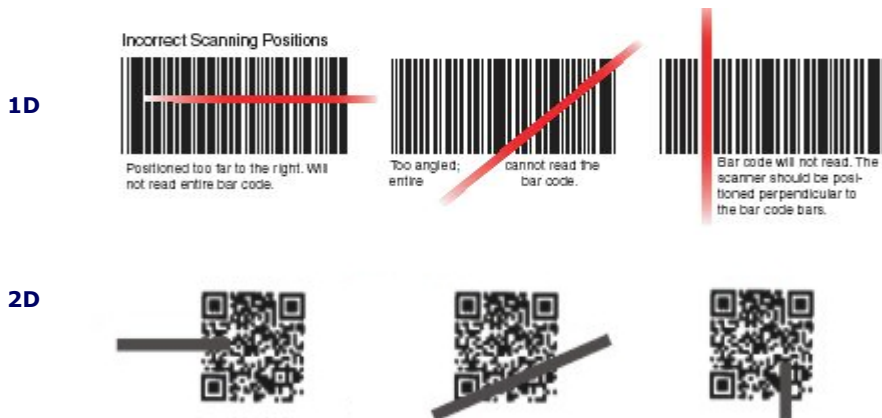
[Correct Scanning Beam Position]

1. The more small size of barcode, **AT280** needs the more close to barcode. The effective scanning rang of Si303 is from 40 ~ 300mm. if failed to scan barcode, please try to adjust scan angle and distance.
2. The laser beam is a red thick line, when scanning a barcode.



[Incorrect Scanning Beam Position]

1. The laser beam must across the barcode.
2. It will couldn't scan barcode if the laser beam across only a fraction of barcode.

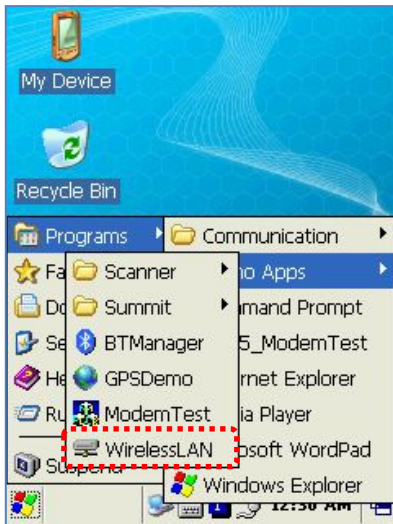


2. Using Wireless Lan

AT280 enable to equip an internal 802.11 radio module to transfer data and do wireless communication. AT280 supports TCP/IP network protocol, and communicate with a host computer directly.

2.1 Connecting to Wlan

[Start Button] -> [Program] -> [Demo Apps] -> [Wireless Lan]



Run the Wireless LAN program.

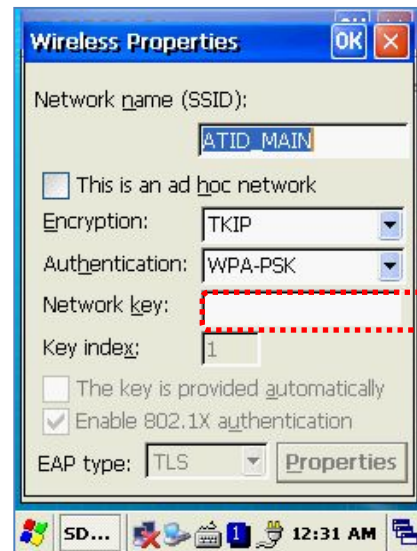


Select <WLAN ON>, and then click Ok button.

2.2 Setting Wlan Manually

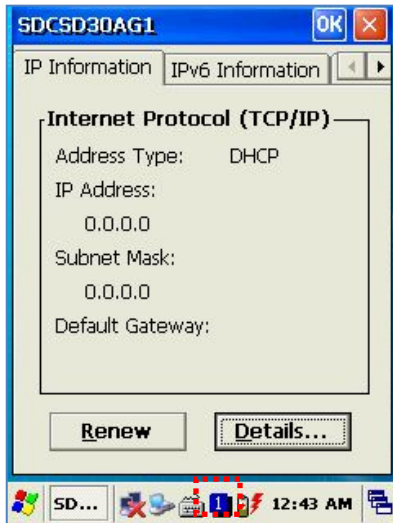


Double click a suitable device from the list of AP.



Input Key Password, and then click OK button.



2.3 Checking WLAN Information



Double click WLAN icon on the task bar to check Wlan information.



Start Button/Programs/ATID App/Wireless Lan, and then select <WLAN OFF> to stop Wlan communication.

- **Note:**
The Wlan LED will be changed to green and the Wlan icon on the taskbar will be lit up on , if failed the Wlan icon will be light off 

3. Using Bluetooth

This User Guide is only applied to the AT280 which installed "MD6RF" module.

AT280 not only supports to the SPP printer device like as AT870/AT570, but also supports Bluetooth Stack Service of Windows CE. This Chapter described how to Pairing and Disconnecting between PDA and Bluetooth devices, and also described basic testing method of Mobile Printer SPR-R203, which launched by Bixolon, as a sample device.

3.1 Bluetooth Beginning and Closing

AT280 is using Stack of Windows basically, only could control the power of Bluetooth Module's ON/OFF.

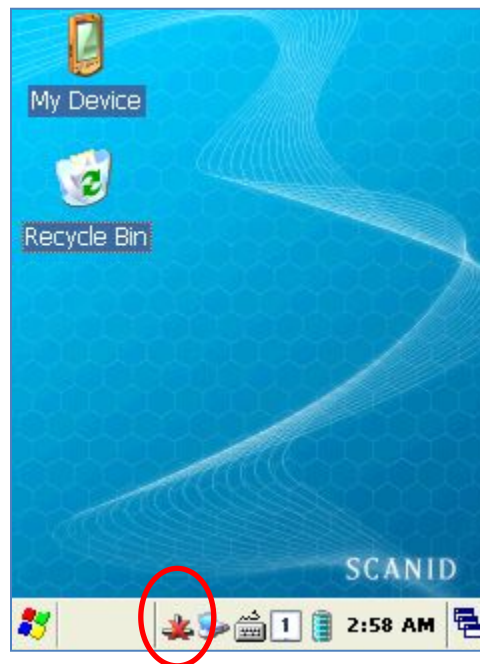
1. Bluetooth Function Beginning
 - A. Executing the "Bluetooth" demo program.
WinCE Start->Programs->Demo Apps->Bluetooth.



- B. Select "Bluetooth ON" item, then press OK button.



- C. After Bluetooth executed, the Bluetooth BTPAN1 icon will be appeared on the bottom of Windows Taskbar, and the red cross mark on it shows that you access is available and prepared to be accessed.



2. Bluetooth Function Closing

A. Executing "Bluetooth" demo App from Windows CE Menu.



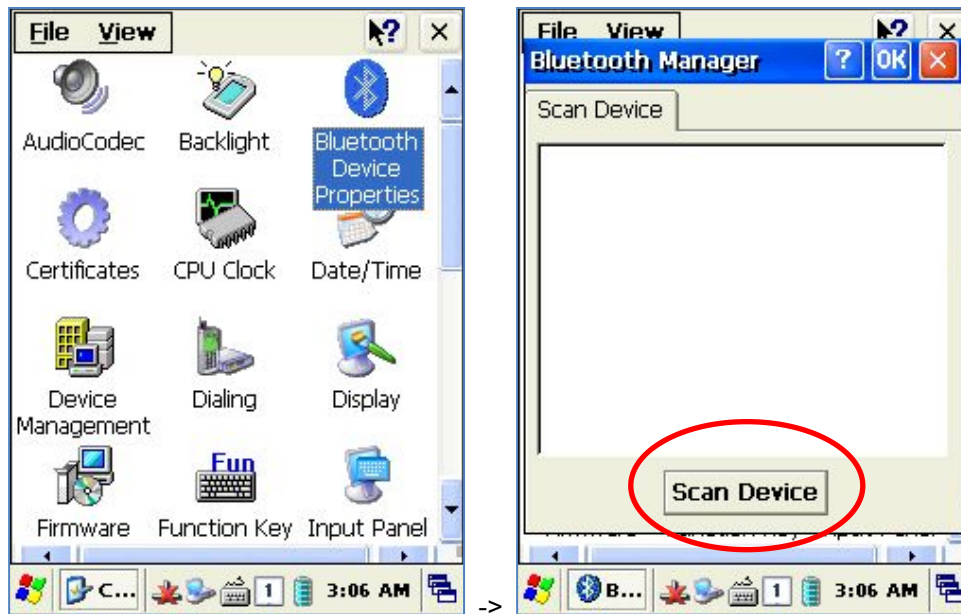
B. Select "Bluetooth OFF", then to press OK button to off the Bluetooth power.



3.2 Bluetooth Pairing

After connecting each other through pairing way, Bluetooth devices could do its function properly.

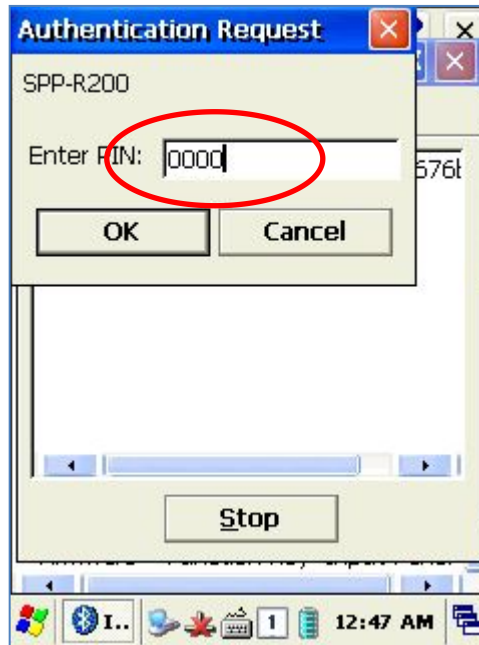
1. Executing Bluetooth program as below path.
Start->Settings->Control Panel->Bluetooth Device Properties



2. Press "Scan Device" button to searching devices which could pairing.

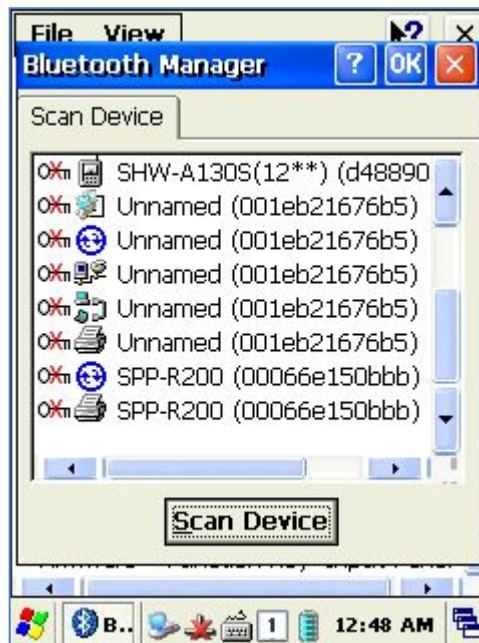


3. Depending on the situation, maybe need to input password for some devices, then could search devices continually.



- ** According to the devices need, some devices have to input Pin Code (password) firstly.
- ** SPP-R200 printer factory setting Pin Code is "0000".

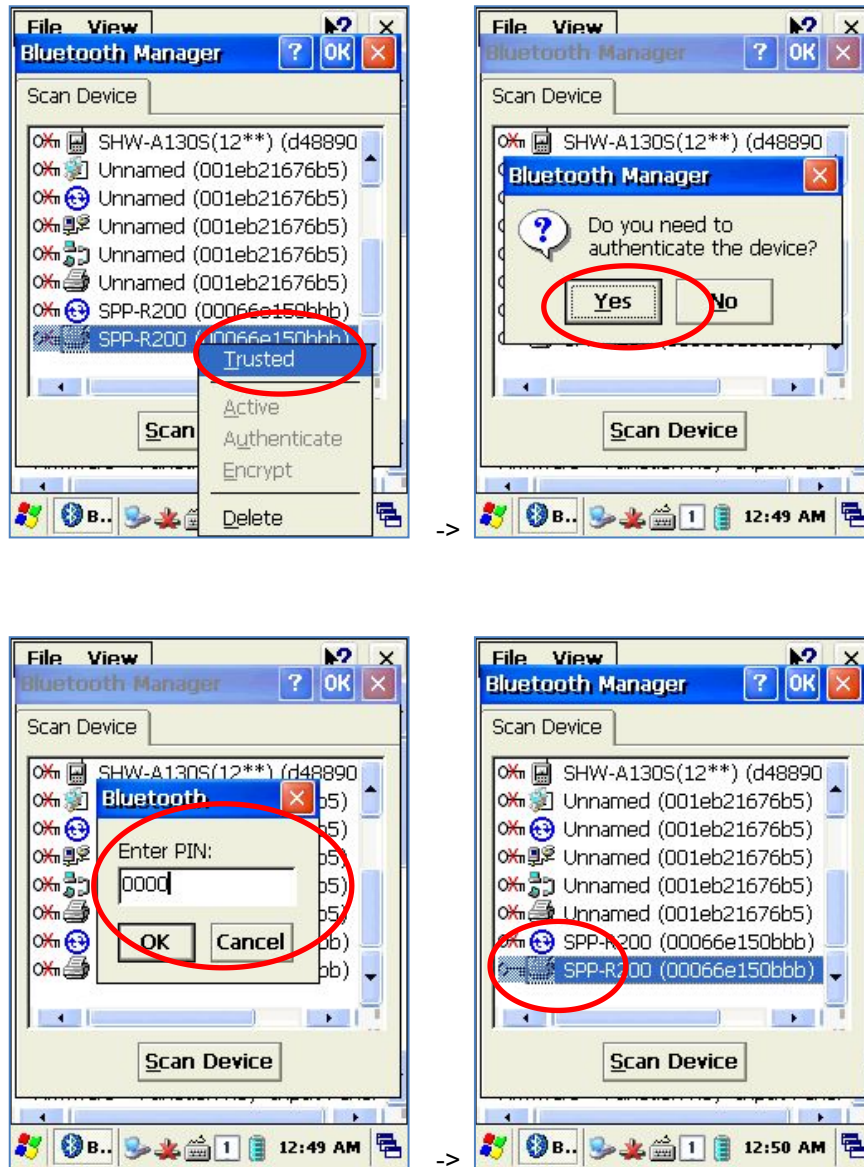
4. The devices which can connect will be listed, after finished searching.



- ** If cannot find your need device, please press "Scan Device" button to searching y

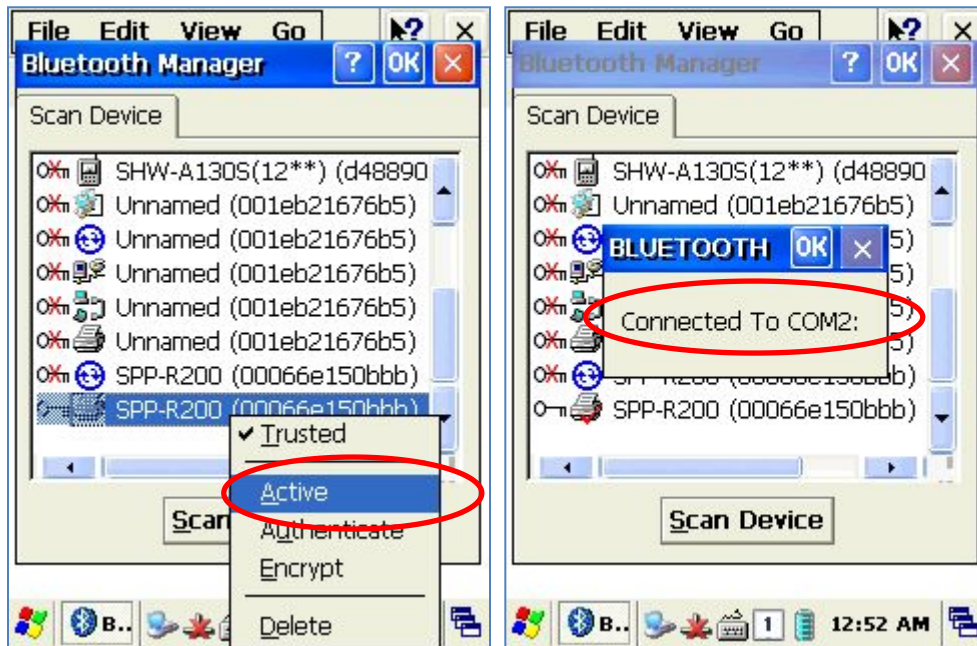
our device again.

5. Double click your device name, click "Trusted" Tab to add the device to the pairing it ems, then click "Yes" button to ending the Bluetooth Manager.



- * You can set the Password (Authentication code) according to the each device.
- * The Red Cross mark(X) on the Key icon will disappear if finished to registration.

- Click "Active" button to active the paired device.



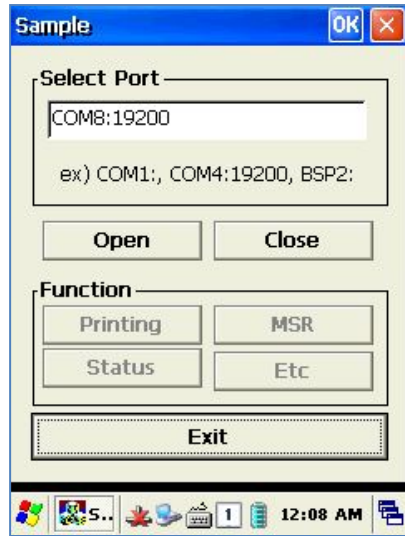
- Then, you can perform the data communication through COM2 Port.
- After pairing and active the Bluetooth device, you can use the Device driver, S/W, and SDK, which provided from the Bluetooth device manufacturer, to perform the relevant Bluetooth function.

3.3 Bixolon SPP-R200 Printer Demo

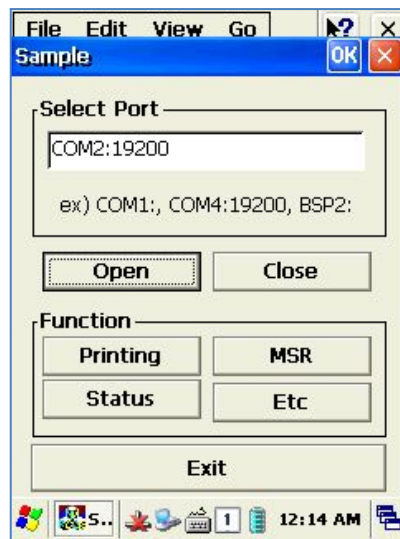
SPP-R200 is typical Mobile Printer of the Bixolon, you can using its App which get from Bixolon website to perform print through Bluetooth.

**the Printer program and SDK, which described in this User Guide is based on the 5th Aug, 2011, and it's would be a little different from homepage contents according to the Bixolon policy.

- Download "SPP-R200 Windows SDK" from the Bixolon homepage (www.bixolon.com) to a suitable directory and unzip the file.
- Bluetooth Power ON.
- Executing "Bluetooth Device Properties" programs which located in Control Panel.
- SPP-R200 printer power ON.
- Setting the SPP-R200 printer to be in the status of pairing. (Please refer to the User Guide of SPP-R200 Printer)
- Press "Scan Device" button to searching printer device nearby.
- In the status of pairing, the factory setting password is "0000" usually.
- If connected successfully, "COM2 port connected" message will be confirmed. (If had connected one time, maybe not show the message.)
- Copy and paste the DLL and executable file, which located at bin\Win5\MobileCompia_M3Plus\ within the printer SDK, to Si303 Flash Disk.
- Executing the Sample.exe program in the Si303 Flash Disk.



11. Change the COM8 to COM2, then press "Open" button to testing printer.



Chaptor5. Appendix

Specification with AT380

| Physical and Environmental Characteristics | |
|---|--|
| Dimension | 146mm(L) X 74mm(W) X 26mm(H) |
| Weight | 250g(PDA only, without battery) |
| Operation Temperature | -20℃ ~ 60℃ |
| Storage Temperature | -30℃ ~ 70℃ |
| Humidity | 95% RH Non-condensing |
| Drop | 1.5m drop to concrete |
| Performance Characteristics | |
| Processor | Marvell™ PXA320 806MHz |
| Operating System | Windows CE 5.0 or Windows Embedded Handheld 6.5(Windows Mobile 6.5) |
| Memory | ROM 256MB (Max. 512MB) / RAM 256MB |
| Display | 2.8" QVGA with Backlight, TFT LCD, 240*320 Pixels, 262,144 Color Stylus Touch Screen Interface |
| Audio | Phone Receiver, Earphone Jack |
| Communication Port | RS-232Serial Port, USB 1.1 |
| Expansion Slot | 1 Micro SD Slot (SDHC Support) 1 SIM Slot |
| Keypad | 32key |
| Notification | Vibrator, LED and Speaker |
| Power Supply | |
| Main Battery | Lithium ion 3.7V Above 5,200mAH(rechargeable) |
| Backup Battery | Lithium Polymer 3.7V, 80mAH(rechargeable) |
| Adaptor | Input AC100V ~ 240V, Output DC5V 3A |
| Network Character | |
| Wireless Lan | WLAN(802.11 a/b/g compliant) |
| Bluetooth | Class II, v2.1 EDR |
| Modem | GSM/GRPS, CDMA, HSDPA, WCDMA, HSPA+ |
| GPS | Internal Antenna |
| Antenna | Internal LAN & WAN |
| Data Capture Devices | |
| Barcode Engine | 1D Laser Scanner or 2D Image Scanner |
| Camera | 3.0 Mega Pixel Auto Focus Camera with Flash |
| UHF 900MHz Tag Reader(Optional) | |

| | |
|---------------|--|
| Frequency | 850MHz- 960Mhz(Adjustable) |
| Reading Range | 0m ~ 7m (Differs from each tag) |
| Writing Range | 0m ~ 3m |
| Antenna Gain | 2 dbi (Standard) |
| Speed | 62.5 kbps |
| RF Output | 1W EIRP |
| Protocol | EPC Gen2 ISO 18000 6C , ISO 18000 6B(Optional) |
| Multi-Reading | Anti-collision |
