

# SCANNING PATIENTS WITH MRI CONDITIONAL PACEMAKERS FROM ST. JUDE MEDICAL

St. Jude Medical has designed, tested, and developed an MRI conditional<sup>1</sup> pacing system to allow safe MRI diagnostic imaging.

Patients with these MRI conditional pacemakers may undergo a scan in a 1,5 Tesla and 4 W/kg MRI scanner.

Use the SJM MRI Activator™ device (model EX4000) to put the pacemaker into its “MRI Conditional” settings, as shown in the steps below.

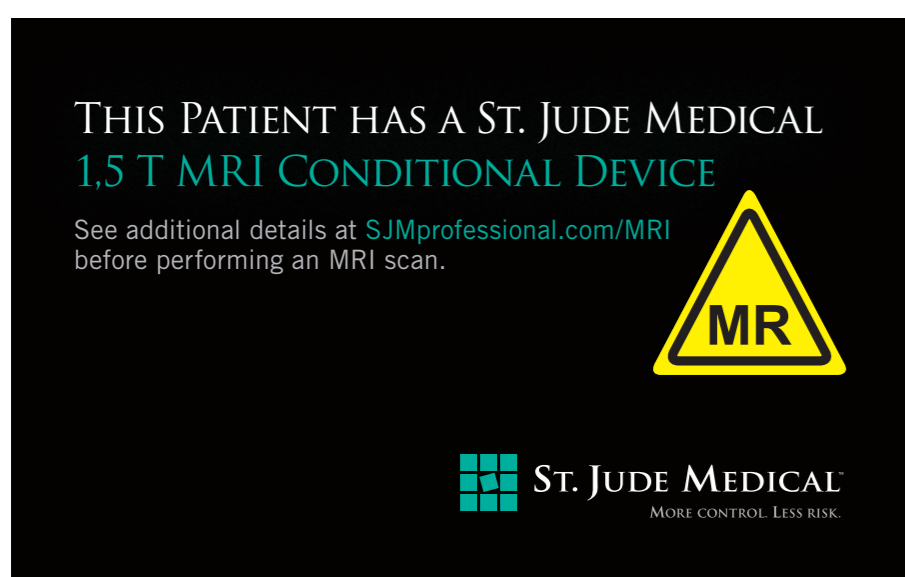


## Steps for Scanning a Pacemaker Patient

### Step One – Verify

- Verify that the patient has a St. Jude Medical MRI Conditional system.

See [SJMprofessional.com/MRI](http://SJMprofessional.com/MRI) for additional details.



### Step Two – Position

- Position the SJM MRI Activator™ device over the implanted pacemaker.



### Step Three – Before the Scan



- Press the MR Button to activate MRI settings.

- If green ● SJM MRI Activator device light illuminates
  - MRI settings are On
  - Safe to scan the patient

- If red ● SJM MRI Activator device light illuminates
  - Do not scan the patient
  - MRI settings are Off

### Step Four – After the Scan



- Press the No-MR button to restore the pacemaker’s normal operation.

- If red ● SJM MRI Activator device light illuminates
  - MRI settings are Off
  - Safe to discharge the patient

- If green ● SJM MRI Activator device light illuminates
  - Do not discharge the patient
  - MRI settings are On

### Troubleshooting Tips

- MR Status** Use the MR-Status button on the SJM MRI Activator device at any time to check whether the MRI settings are on or off.
- If the SJM MRI Activator device makes a high-low sound
  - It cannot communicate with the MRI conditional pacemaker; reposition the SJM MRI Activator device.
  - The pacemaker is not MRI conditional; contact the pacemaker physician (on the ID card) or St. Jude Medical Technical Support.
- If the appropriate light (green before scan, red after scan) fails to illuminate after pressing a button, reposition the SJM MRI Activator device over the implanted pacemaker and try again. If the appropriate light still does not illuminate, contact St. Jude Medical Technical Support.
- The SJM MRI Activator device is only compatible with a St. Jude Medical MRI conditional pacing system.

### <sup>1</sup>MRI Conditions for MRI Pacemaker Scanning

- 1,5 Tesla only
- Horizontal, closed-bore scanner
- Normal operating mode or first level controlled operating mode
- Maximum gradient slew rate of 200 T/m/s per axis

### Important

- Do not bring the SJM MRI Activator device into Zone IV (MR scanner magnet room) as defined by the American College of Radiology.

### St. Jude Medical Technical Support

24-hour tech support at +1-818-362-6822 (USA)  
or +46-8-474-4147 (Sweden).  
[SJMprofessional.com/MRI](http://SJMprofessional.com/MRI) and [MRISafety.com](http://MRISafety.com)

[SJMprofessional.com/MRI](http://SJMprofessional.com/MRI)



Prior to using these devices, please review the User's Manual for a complete listing of indications, contraindications, warnings, precautions, potential adverse events and directions for use. Devices depicted may not be available in all countries. Check with your St. Jude Medical representative for product availability in your country. Unless otherwise noted, "™" indicates that the name is a trademark of, or licensed to, St. Jude Medical or one of its subsidiaries. ST. JUDE MEDICAL, the nine-squares symbol and MORE CONTROL. LESS RISK. are trademarks and service marks of St. Jude Medical, Inc. and its related companies. ©2010 St. Jude Medical, Inc. All Rights Reserved.