



8GB PORTABLE VIDEO PLAYER

## User Guide

### After Sales Support

Now you have purchased a TEVION® product you can rest assured in the knowledge that as well as your 3 year parts and labour warranty, you have the added peace of mind of dedicated help lines & web support.



### AFTER SALES SUPPORT

UK/N.IRELAND HELPLINE NO 0844 635 0008

REP.IRELAND HELPLINE NO 1800 995 036

WEB SUPPORT [www.qesh.co.uk](http://www.qesh.co.uk)

MODEL NUMBER: 42813

## Contents

- 03 Introduction
- 04 Features
- 05 General Information and Safety
- 07 Accessories
- 10 Getting Started
- 11 Connecting to a PC or charger
- 12 Music mode and putting music onto you player
- 24 Photo mode
- 27 Movie mode and converting movies
- 33 Camera
- 35 FM Mode
- 39 Additional
- 45 Setup

## Welcome!

Congratulations on choosing to buy a Tevion® product. By doing so you now have the assurance and peace of mind that comes with purchasing a product made by one of Europe's leading manufacturers. All products brought to you by Tevion® are manufactured to the highest standards of performance and safety, and, as part of our philosophy of customer service and satisfaction are backed by our comprehensive 3 year Warranty. Please fill in and return the Warranty Card to the address provided. We hope you will enjoy your purchase for many years to come.

## Features

- Colour TFT display
- Action solution
- Intel flash memory
- Music playback MP3 / WMA / WAV
- Video playback AVI
- Photo playback JPEG / BMP
- 1.2 mega pixel camera with video recording
- FM radio, Digital voice recorder, eBook reader
- USB 2.0 high speed
- Built in rechargeable lithium battery

## General Information and Safety Instructions

### **Read all instructions before using this product**

- Do not throw the product into fire as this may cause an explosion.
- Do not immerse into water or get soaked as this can permanently damage the player.
- Please charge the battery before you use the player first for approximately 4 hours.
- Do not charge rechargeable batteries longer than specified.
- Do not take the batteries apart.
- Overcharging & over-discharging rechargeable batteries may shorten their life span.
- To prolong the life of a rechargeable battery, completely discharge it before fully charging it again.
- Recharge battery with below status:
  - Low battery
  - System auto off.
  - Operation key not working
- When the "Copying Files" window appears on your PC please don't remove the USB from your computer.
- Do not unplug the USB cable during file downloading, it may cause malfunction to your PC and player.
- Do not plug in an earphone or audio cable during file download.
- Downloading can be delayed if there are too many folders or files.
- The order of music files displayed on the Windows Explorer is not the order of actual music playback.

- When it is connected to the PC, the player will start charging.
- Do not attempt to open the player in any way as this will void your guarantee.
- Please make sure that the version of the Direct X in the computer is Direct X 8.0 or above when converting the format of the video file. For the update of DirectX, please visit [www.microsoft.com](http://www.microsoft.com) and read the concerned information carefully.



THE LI-ON BATTERY INSIDE THIS UNIT CANNOT BE REPLACED



Do not attempt to remove the battery. Once your Media player has reached the end of its life span, the unit in its entirety should be taken to a recycling centre. Please contact your local authority for details of recycling schemes in your area.

## Accessories

Earphones x 2

Elastic Armband x 1

Silicone Pouch x 1

USB Cable x 1

Software CD x 1

User Manual x 1

## Display and functions



S/N	Description
1	Display Screen
2	ON/OFF
3	Earphone Jack
4	Menu key
5	VOL/OK key
6	Next key
7	USB Plug
8	Play/Pause/Selection
9	Last key
10	Strap eyelet



## Key Functions

- ON/OFF key: Push this ON/OFF key to ON to power on the player, push this key to OFF to power off the player.
- Play/Pause key: Make sure the ON/OFF key is in the ON position, then long press Play/Pause key to turn ON or turn OFF, Quick press it to play and pause.
- OK key: enter into menu
- Next key: To select next song, voice or video, to fast forward.
- Previous: To select previous song, voice & video, to fast rewind.
- M key: Quick press to back to the previous menu.

## Getting Started

### Key Operation

Action	Basic operations
Short press	Key pressing time less than 1.2 sec
Long press	Key pressing time more than 1.2 sec
Hold	Press the key and keep the key pressed

Note: unless otherwise specified, press in this manual means short press.

### General Instructions

#### Power On/Off

Push ON/OFF key to the ON position, then long press the play key to turn on the player.

Push ON/OFF key to OFF to power off the player directly, or long press the play button again.

Note: This function is ineffective when the player is connected to a PC.

## **Low Power**

When the battery power is low, the player will prompt and enter standby mode automatically. Recharge the player again for approx 3 hours, before attempting to power on.

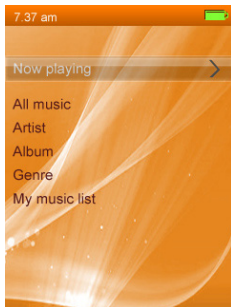
When charging the battery the Power switch should be in the ON position.

## **Connecting to a PC or charger**

Connect the player to PC with the USB cable provided, then the player will be charged and you will see a battery signal on the player.

## Music

Select “Music” on the main interface and press OK key to enter the main interface. Main Interface



**All Music:** List all the music files stored under MUSIC directory in the player.

**Artist:** Lists the current artists available on the player, press play to open the contents.

**Album:** Lists the current albums available on the player, press play to open the contents.

**Genre:** Lists all genres available on the player, press play to open the contents.

**My Music List:** You can have up to 5 play lists, press play to select the playlist contents.

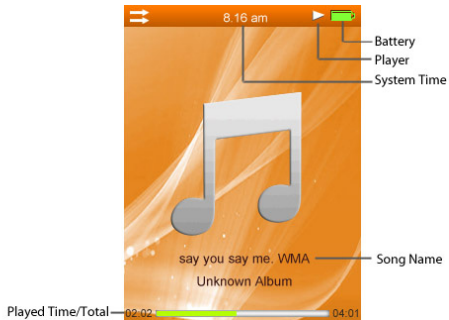
**Dir List:** Internal Memory contains all music files in the player. External Memory lists all music files on an external card and this list will not be displayed if no card is inserted.

**Record List:** List all recorded files.

**Stat Level:** List five ratings (1-5 Star); each rating displays all the music of the ratings. User can rate music according to the favourites.

**Tag List:** List all the music tag set by user; supporting up to 32 tag lists.

## Music Playing Interface



### Submenu and Basic Operation

In music playing interface, Long press OK to enter submenu, the items includes: <Repeat>, <Select EQ>, <Variable Speed>, <Lyric Display>, <Add Bookmark>, <Add to My List>, <Delete the File>, <Information>.

## **Play & Pause**

Press Play key to switch between play and pause.

## **Rewind and Forward**

When playing music or music is paused, long press Last/Next key to fast rewind or forward.

## **Next or Previous Song**

Press Last/Next key to switch to the previous or next music.

## Music Playing Interface

### Playback Mode

Select <Repeat>. Play mode includes: Sequence, Repeat One, Repeat All, Shuffle and Shuffle + Repeat.

### Select EQ

The items includes: Normal, Rock, Pop, Classic, Soft, Jazz, DBB, SRS WOW, SRS WOW HD and SRS User Mode.

### Variable Speed

Press Last/Next key to change playing speed of the song from -4 to 4

### Lyric display

Press Last/Next key to select Enable or off.



## Music Playing Interface

### Add Bookmark

Select <Add Bookmark>, press OK key, the system will add now-playing music and its current time point to Tag List and then return to playing interface.

### Add to My List

Enter <Add to My List> and select one list and press OK key, then the current song will now be added to that playlist.

### Delete File

Select <Delete the File>, press OK key to delete the song from the player.

### Information

Check the information of the current song.

## Putting music onto your player

There are two ways you can put music onto your player, the easiest way is drag and dropping or copy and pasting. In order to do this simply plug your player into the PC and then go into MY COMPUTER and you will see a TEVION MP3 listed, from here simply copy and paste your MP3's or WMA'S into the TEVION MP3 or drag and drop directly into it. This method however will not place your songs into ALBUMS. If you wish to do this you need to place your music on the player using the sync function.

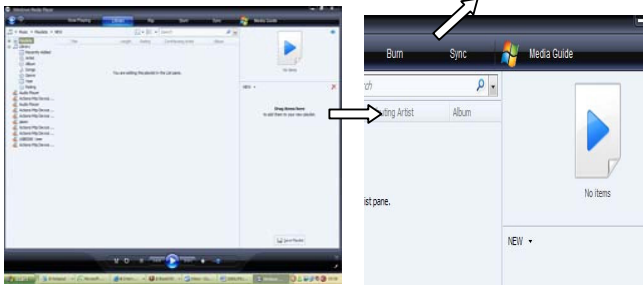
### SYNCING Music to your player

Syncing a playlist to the player will place your albums as separate folders so you can access one album at a time.

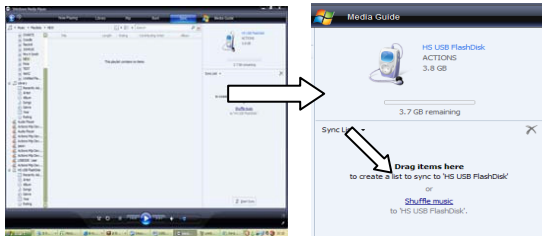
1 – Make sure that your running windows 11 and above, if your not then go to the Microsoft website and do an update.

## SYNCING Music to your player

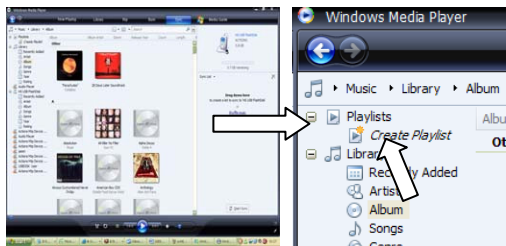
2 – Open up windows media player and plug your Media player in, then click on the SYNC button on the top right of windows.



3 – You will notice now on the right hand side of the screen that it's asking you to drag items here to create a list to sync. Before you drag anything over you must first create a playlist containing the albums you require to put on.



4 – To create your playlist first left click once on create playlist on the top right of the screen. Now rename this to what you would like to call your playlist.

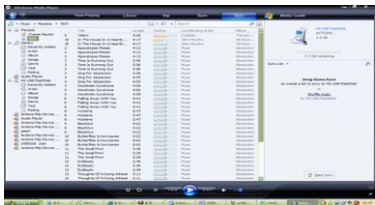


## SYNCING Music to your player

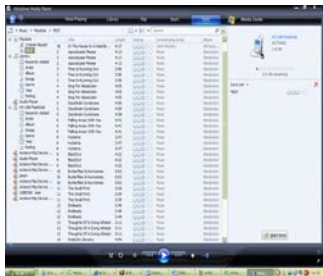
5 – Now that you have given your playlist a name you can start dragging your files into this playlist.



6 – Once you have dragged all your selected files onto the playlist you should now see all of your files in your newly created playlist.

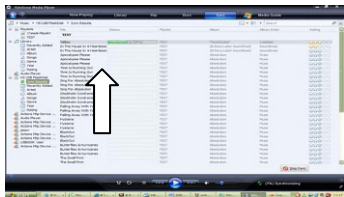


7 – Now drag your playlist over to the box mentioned in step 3 which asks you to drag items in to sync. What you should now see is your playlist listed in this box, then below you will see a START SYNC button you will need to press to begin syncing the playlist to the player.



## SYNCING Music to your player

8 - Windows media player should now show that it's syncing each song in your playlist by indicating a progress bar for each song. Wait until the sync is complete before you take out your player.



9 – You now have successfully synced a playlist to your player. To now access each album simply switch your player on and go into your music function. From here press the play button on the music section and then press play on which all music, your songs should now be displayed in this folder.

## Photo

Select <Photo> in the main interface to enter its main menu.

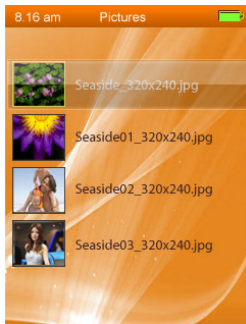
### Main Interface

**Now Playing:** the function and operation are the same as that of <Music-Now Playing>.

**DirList:** the function is the same as that of <Music-Dir List>.

**Play Mode:** set display mode of picture list, List Mode and Thumbnail Mode.

#### List Mode





## Thumbnail Mode



In the Thumbnail Mode, press Last/Next key to move left or right,  
long press Last/Next key to move up and down.

## Submenu and Basic Operation

When browsing a picture manually, press OK to enter submenu, it includes: <Slide Gap>, <Slide Effect>, <Delete the File> and <Information>.

### Play and Pause

When the player is playing a picture automatically, press Play key to switch between auto and manual play. For manual playing, press Last/Next key to play the previous or next picture.

### Slide Gap

Select picture playing interval: 1-10 Sec, this will delay moving onto the next picture by the set amount.

### Slide Effect

Select the special playing effect: Normal, Fly In, Chessboard, Cut, Erase, Louver, Random Line and Random by pressing OK on the desired option.

### Delete the File

Operates the same as <MUSIC-Delete the File>

### Information

Check the information of now-playing picture.

## Playing Movies

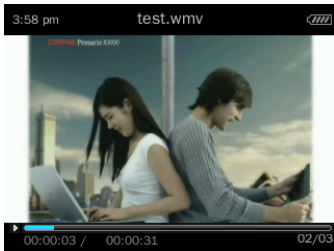
Select <Movie> in the main interface to enter its main menu.

### Main Menu

**Dir List:** Press OK to select then choose either the internal memory or card if inserted and then select the movie to begin watching.

**Tag List:** lists all the video files which you have tagged.

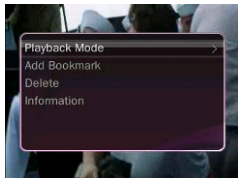
### Video Playing Interface



In video playing interface, press any key to show the top and bottom bar, displaying the playing information of the current video file and to execute the corresponding operation. The bar will disappear if nothing is pressed for 3 sec.

### Submenu and Basic Operation

In the video playing interface, long press OK to enter the submenu which will display the following options : <Playback Mode>, <Add Bookmark>, <Delete> and <Information>. At this time, video playing stops and will continue once you exit the menu.



## Playing Movies

### Play & Pause

Press play key to switch between play and pause.

### Rewind and Forward

When playing or pausing video files, long press Last/Next key to rewind and fast forward.

### Change File

When playing or pausing a video file, quick press Last/Next key to switch to the previous or next file.

### Playback Mode

Playback mode includes: Sequence, Repeat One, Repeat All and Shuffle.

### Add Bookmark

Press the OK button on add bookmark, this video and the exact moment you selected the bookmark will now be stored in the Tag option, when you next enter tag you will see the bookmark there, simply press OK on this bookmark to resume play.

### Information

Displays available information of the current video playing.

## Converting Movie Files

### Installing the video software

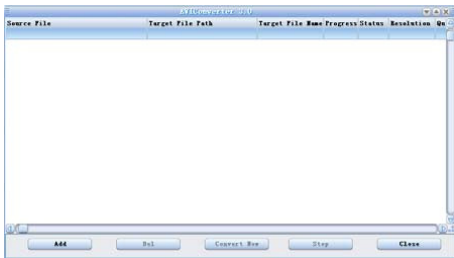
Place the CD included with your MP4 player in the computer compact disk drive. In the Windows Operation System, it will automatically pop up with the installation interface. Click on "Video Convert Tool" to start installing all the software for the MP4 player. Follow the installation prompt to complete the installation process.

### Producing video files

The MP4 Player supports AVI files only once they have been converted. AVI files need to be converted using the software provided before you place them onto your player. File formats you are able to convert are Divx AVI, mpeg2-4 and WMV. NOTE: You cannot use this convertor to convert an original DVD, you will need to find alternative software to first convert the DVD into a format the convertor will recognise as listed above.

How to convert a video File into the players AVI format.

1 - Click and run the AVI convertor you have now installed, this will display the following screen.



2 - Click "add ", which will then display the following options



## Converting Movies

1. Locate the source file (this is the file you wish to convert)
2. Select Target File Path (where you would like the converted movie to be saved)
3. Select Target File Name (what you would like the file to be called)
4. For better quality always have the resolution set to 320 x 240.
5. Adjust Setting /Aspect Ration as required
6. Press Save
7. Now press the convert button
8. The successfully converted AVI video file will now be stored on the folder you selected.

Now simply drag or copy your file from that folder to the p layers removable disk into the video folder.



## Camera

Select <Camera> in the main application interface.



1. Press OK to take picture;
2. Adjust focus: press Last/next to zoom in and zoom out.

## DV

Select <DV> in the main application interface



1. Press OK to start recording and press it again to pause. Press M to exit, the system will automatically save the file before exit.

## FM Radio

Select <FM Radio> in the main interface to enter.

NOTE: The earphones act as an aerial, and therefore must be connected to the player in order to pick up stations.

### Fm Radio Interface



There are two modes in FM, Normal and Preset, to toggle between them press the play button. When in normal mode, preset will not be displayed on the screen. When in Preset mode, preset will be displayed on the top right of the screen. Dependant on which mode your using effects the menus and options in FM.

### **Searching for a Station**

To begin searching for a station first make sure you have the FM setting set to UK as shown below and that your in the normal mode.

Manual search – Quick press the arrow left or right to slowly search through the band frequency.

Auto Search – Long press the left or right arrow to quick search for a station.

### **Saving a Station**

Once you have found a strong signal for a station, press the OK button and move down to save station. Press the OK button to access and move to a CH number, now press play to save to this CH number.

### **Accessing Saved Stations**

In order to tab through your saved presets, press the OK button to enter the preset mode and quick press the left or right arrow to skip from one to another.

## Submenu and Basic Operation

In Normal or preset Mode, press M to enter the submenu, which includes: <FM Record>, <Record Quality>, <Record Gain>, <Save Channel>, <Auto Search>, <Station List>, <FM Band> and <Mute>.

### FM Record

Press OK key to select this option, once selected the player will start to automatically record the station, to stop and save the file simply press the M button. Saved recordings will go into Music/recordings/FM radio

### Record Quality

Set record quality to either, low, medium or high.

### Save\Delete Station

Press OK key to save the current station and the save location can be selected in the station list. If re-entering the station list after saving, the menu will show Delete-delete the current station.

## **Auto Search**

Select <Auto Search> in the submenu, the system will start an auto search. When the search finishes, the system will automatically save the searched stations and play the first one. If no stations are found the scan will stop and no saved stations will be accessible. During the search, press M to exit, the system will stop at the last searched station.

## **Station List**

List the saved stations. Select one station and press OK key to enter the FM listening interface to listen. Supports up to 20 stations per band.

## **FM Band**

Select FM Band, Europe and Japan.

## **Start Playing/Mute**

Select Start Playing/Mute in the submenu, press Play OK to switch between these two options.

## Additional

The player supports Stopwatch, Calculator and Calendar, My Ebook, Recordings and Game.



### Stopwatch

1. Select Stopwatch and press OK key to enter.
2. Press OK key to start/pause/continue counting. Press Next key to save the current counting and start a new one. At the 5<sup>th</sup> counting, press Next key to re-start the 1<sup>st</sup> counting to continue.
3. When counting is paused, press M to show Clear box to clear counting record.

## Calculator

1. Select Calendar and press OK key to enter.
2. Press Last/Next key to move left and right. Press OK key to confirm.

## Calendar

1. Select Calendar and press OK key to enter.
2. Press OK key to switch among Year, Month and Date, short or long press Last/Next key to change value.

## EBook

Select <EBook> in the main interface to enter the main menu.

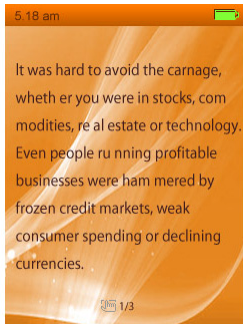
Dir List: Dir List: Press OK to select then choose either the internal memory or card if inserted and then select the movie to begin watching.

Tag List: list all the text files that you have bookmarked.



## Submenu and Basic Operation

In the text reading interface, press OK to enter submenu, this includes: <Skip to>, <Auto Play Gap>, <Font Size>, <Add Bookmark> and <Delete the File>. Text Reading Interface:



## Play and Pause

In the reading interface, press Play key to switch between Auto Mode Manual Mode, the text will stop, press Last/Next key to turn to the previous or next page. In auto mode the pages will turn automatically after set seconds, see Auto play gap on page 40.

## **Skip To**

Press Last/Next key to adjust reading percentage, jumping to the page corresponding to the set percentage. Step: 5%.

## **Auto Play Gap**

Set auto play interval. Press Last/Next key to change the value from 3s to 15s. Step: 3s. The default gap is 6s.

## **Font Size**

Change font size: small, medium and large.

## **Add Bookmark**

Select <Add Bookmark>, press OK key, the system will add the current text file and the position to the Tag List.

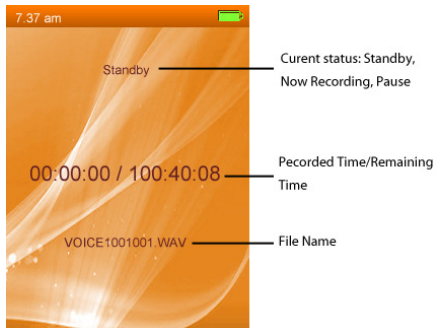
## **Delete the File**

Select <Deletethe File>, press OK key to delete the song from the player.

## **Recordings**

Select <Recordings> on the main interface to enter recording interface.

## Recording Interface



### Submenu and Basic Operation

#### 1. Start\Pause\Stop Recording

Press **▶** to switch between record and pause record. Press ESC, the system will prompt "Stop Record?", select <OK> or <Cancel> and press **▶** to confirm and return to the recording interface. The recorded file will be saved in the <Music-Record List-Voice>. When the recording pauses, press M to save the recorded file.

## Games

### Menu and Basic Operation

Select a game and press Play key to enter its menu.

**Restart Game:** start a new game.

**Load Game Progress:** continue to play the game which exited last time the game progress will be saved before.

**Setting:** press Last/Next key to move up and down to select. Volume: adjust game volume.

**Audio Output:** enable or disable game music during game playing.

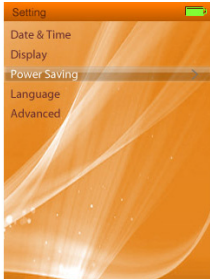
**Keyboard Mapping:** define key's function for game playing. Enter key mapping interface, press the corresponding key to define the function according to the system prompts. After the setting, select "Save Changing" and press OK key to confirm.

**Display Mode:** set normal display or full screen display.

When game is over, the system will return to the menu interface and show <Save Progress>> User can select it to save game progress and press OK key to confirm.

## Setup

Select <Setup> in the main interface to enter the menu.



### Date and Time

#### 1. Adjust Date

Set system date. Press Last/Next key to change the value and press OK key to confirm and exit.

#### 2. Adjust Time

Set system time. Press Play key to switch between hour, minute and AM\PM, and press Last/Next key to change the value. Press OK key to confirm and exit.

## **Display**

### **Backlight**

Off, 5, 10, 20S, 30S, 1M and 5M. If the backlight time is off, then the player will not enter the screen saver black screen. If it is not off, the screen will turn black if the player is not doing anything.

## **Power Saving**

### **Idle Time**

Off, 10S, 30S, 1M, 1M, 5M and 10M. If the power saving is off, the player will not shut down automatically, if it is not off, the player will shut down in case no operation during the set duration.

### **Sleep Time**

Off, 10S, 10M, 30M, 1Hr, 2Hr, 3Hr, 4Hr and 5Hr. The player will shut down when the set time is reached.

## **Language**

Supports English, Simplified Chinese, Traditional Chinese, Japanese, Korean, French, German, Italian, Dutch, Portuguese, Spanish, Swedish, Czech, Danish, Polish, Russian.

## **Advanced**

### **Player Information**

Shows the player's information: Owner, Player Name, Firmware Version, Total Space, Free Space.

### **Format Memory/External Memory**

Formats the players internal or external memory.

### **Owner**

You can set your name here!

Press play key to entry into this interface. Then press Play key to up and down, press Last/Next key to left and right. Press M key to delete the letter you selected. Then select OK to confirm your name.

### **Reset**

Resets the player to its factory default.

## Technical Specifications

Display	2.2" TFT display	
USB	USB2.0 (HIGH SPEED)	
Support flash	512M—8GB	
Battery	Li-battery, support playback time about 3hours(MP3)	
Voice record	Rate	8KHz/16KHz
	Format	WAV (32/64/192/384Kbps)
		MP3 (64/128/256Kbps)
MP3、WMA	Max. output	(L) 5mW+ (R) 5mW (320hm)
	MP3 Bit rate	8K bps – 320K bps
	WMA Bit rate	32K bps – 384K bps
	Frequency	20Hz 20KHz
	SNR	85dB
Support Formats	MP3、WMA、WAV、OGG、APE、FLAC	
Video Formats	AVI	
Multi- language	Simp Chinese, English, Trad Chinese, Japanese, Korean, Italian etc.	
Support System	Windows98/ME/2K/XP/Vista/Linux6.2/Mac os 10	





## 8GB PORTABLE VIDEO PLAYER

---

### FAULT REPORT CARD

---

Name \_\_\_\_\_

Address \_\_\_\_\_

Email \_\_\_\_\_ Daytime Tel No \_\_\_\_\_

Model Number 42813 \_\_\_\_\_

Fault Description \_\_\_\_\_

---

#### SERVICE HELPLINE

UK/N.IRELAND 0844 635 0008

REP IRELAND 1800 995 036

WEB: [WWW.QESH.CO.UK](http://WWW.QESH.CO.UK)

QESH LTD, 1 SOLWAY COURT

CREWE BUSINESS PARK, CW1 6LD



## 8GB PORTABLE VIDEO PLAYER

### WARRANTY CARD

Congratulations! You have made an excellent choice with the purchase of this quality product. Our commitment to quality also includes our service. Should you, contrary to expectations, experience defects due to manufacturing faults during private use within 36 months of the date of purchase we shall be liable for warranty in accordance with statutory warranty regulations

provided that:

- the device was not put to any use other than the intended
- was not overloaded
- was not used with the wrong accessories
- repairs were not carried out by any other than the authorized workshop

The warranty certificate is only valid in connection with the receipt. Please keep both in a safe place. This warranty does not affect your statutory rights.

This purchase is guaranteed for a period of three years beginning on the day of purchase. Keep your purchase receipt safe as proof of date of purchase. The guarantee can only be extended for the duration of any repair required.

Should your item become defective during the warranty period, in the first instance please call our service centre on the number below, they will then inform you of what to do next. We will at our discretion, either repair or exchange the device in accordance with warranty legislation.

Please enclose the following when sending your product in for repair:

1. Receipt (proof of purchase)
2. This warranty certificate with the fault report form overleaf complete with your name, contact details and fault description.

If the original receipt is not enclosed the repair will be charged in all cases. After the warranty has expired you can still send defective devices for repairs to the address stated below. Quotes as well as repairs after the warranty period are to be paid for in all cases.

Ensure that the product is sent well packed as no responsibility can be accepted for items lost or damaged in transit.

This warranty does not affect your statutory rights.

