



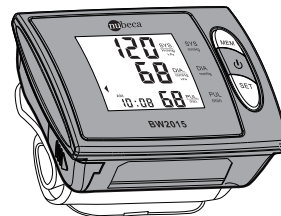
Distributor:

VER:A00



# Instruction Manual

## Digital Blood Pressure Monitor Fully Automatic Wrist Style



Model No:BW2015

- Thanks for choosing the Digital Blood Pressure Monitor.
- Please read this instruction manual before using your unit.
- Please keep this instruction manual safe for future use.

### Table of Contents

#### Before Using the Monitor

• Introduction.....	1
• Symbols Use.....	2
• Important Safety Notes.....	3
• Know Your Unit.....	4-5
• IHB Introduction.....	6
• Before Taking A Measurement.....	7

#### Operating Instructions

• Battery Installation/Replacement.....	8-9
• Adjusting Settings	
— 1. To set year .....	10
— 2. To set date and time .....	11-12
— 3. To set positioning system .....	12
— 4. To set displaying of the date and time .....	13-14
— 3. To set unit .....	15
— 6. To set user .....	16
• Proper Way of Measurement .....	17
• Take a Measurement .....	18-20
• Use the Memory Function	
— To read the average value .....	21
— To read the measurement value .....	22
— To delete the memory value .....	23

### Table of Contents









• About Blood Pressure	
— Blood Circulation .....	24
— Health and Blood Pressure .....	25
— Classification of Blood Pressure .....	26-27
<b>Care and Maintenance</b>	
• Exceptional Situations	
— Error Indicators .....	28
— Eliminate Fault .....	29
• Care and Maintenance	
— Care .....	30
— Maintenance .....	31
• Specifications .....	32-33
• Statement .....	34
• Warranty Information .....	35-36

## Introduction

- Thank you for purchasing Fully Automatic Wrist Style Digital Blood Pressure Monitor.
- The unit uses the oscillometric method of blood pressure measurement. It means the unit detects the movement of your blood through your brachial artery, and converts your blood pressure into a digital reading. The unit is simple to use because a stethoscope is not needed while using an oscillometric monitor.
- The unit stores automatically 180(2\*90) sets of measurement values with the measuring date and time. You can read the stored data conveniently by pressing the memory button.
- The unit comes with the following components:
  - Main Unit
  - Storage Case
  - Instruction Manual printed in English
- The unit have the following advanced functions:
  - Displaying of the date and time


1

## Symbols Use

SYMBOLS USED IN THIS INSTRUCTION MANUAL	
 <b>WARNING</b>	Indicates a potentially hazardous situation which, if not avoided, could result in death or serious injury.
 <b>CAUTION</b>	Indicates a potentially hazardous situation which, if not avoided, may result in minor or moderate injury to the user or patient or damage to the equipment or other property.
	Type B applied part
	AUTHORISED REPRESENTATIVE IN THE EUROPEAN COMMUNITY
	Refer to instruction manual/booklet
	MANUFACTURER
	SERIAL NUMBER
	The marking of electrical and electronics devices according to Directive 2002/96/EC. The device, accessories and the packaging have to be disposed of waste correctly at the end of the usage. Please follow Local Ordinances or Regulations for disposal.

2

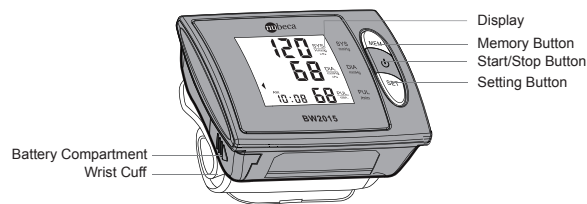
## Important Safety Notes

-  *To assure the correct use of the product basic safety measures should always be followed including the precautions listed below:*
- Read all information in the instruction manual and any other literature included in the box before using the unit.
  - Contact your physician for specific information about your blood pressure. Self-diagnosis and treatment using measured results may be dangerous. Follow the instructions of your healthcare provider.
  - Operate the unit only as intended. Don't use for any other purpose.
  - The unit is intended to use in measuring blood pressure and pulse rate for adult only, not recommended for neonatal baby at home or medical centre.
  - Do not use a cellular phone near the unit. It may result in operational failure.
  - Please avoid using in high radiant area in order to make your measuring data correctly.
  - Do not disassemble or attempt to repair the unit or components.
  - Do not use the equipment where flammable gas (such as anesthetic gas, oxygen or hydrogen) or flammable liquid (such as alcohol) are present.

3

## Know Your Unit

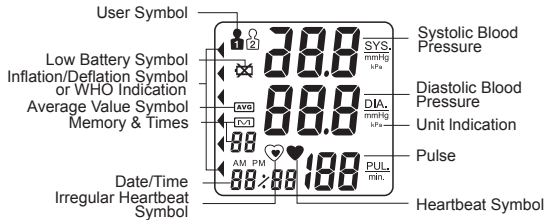
### Body & Cuff



4

## Know Your Unit

### Display



### Power

- 2 AAA Alkaline Batteries



- Storage Case



5

## IHB Introduction

### Irregular Heartbeat Symbol (👁️)

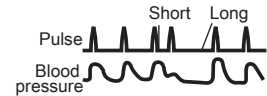
When the unit detects an irregular rhythm two or more times during the measurement, the Irregular Heartbeat Symbol will appear on the display with the measurement values.

#### Normal Heartbeat



An irregular heartbeat rhythm is defined as a rhythm that varies by less than 25% from the average rhythm or 25% more than the average rhythm detected while the monitor is measuring the systolic and diastolic blood pressure.

#### Irregular Heartbeat



If the Irregular Heartbeat Symbol (👁️) displays with your measurement results, we recommend you consult your physician. Follow the directions of your doctor.

6

## Before Taking A Measurement

1. Avoid eating, drinking alcohol, smoking, exercising and bathing for 30 minutes before taking a measurement.
2. Stress raises blood pressure. Avoid taking measurements during stressful times.
3. The cuff can be applied to your left or right wrist. Always measure your blood pressure on the same wrist.
4. Measurements should be taken in a quiet place.
5. Position the unit at heart level throughout the measurement.
6. Remain still and do not talk during the measurement.
7. Keep a record of your blood pressure and pulse readings for your physician. A single measurement does not provide an accurate indication of your true blood pressure. You need to take and record several readings over a period of time. Try to measure your blood pressure at the same time each day for consistency.
8. Wait 30-60 seconds between measurements. The wait time allows the arteries to return to the condition prior to taking the blood pressure measurement. You may need to increase the wait time depending on your individual physiological characteristics.

7

## Battery Installation / Replacement

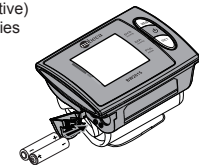
1

Remove the battery cover from the battery compartment.



2

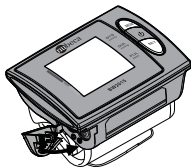
Install 2 "AAA" size batteries so the + (positive) and - (negative) polarities match the polarities of the battery compartment as indicated.



8

## Battery Installation / Replacement

- 3** Replace the battery cover.



- Use two identical 1.5V alkaline batteries type AAA/LR03.
- Do not use rechargeable batteries.
- Replace both of the batteries if the symbol of low battery appears on the display.
- Never leave any low battery in the battery compartment since they may leak and cause damage to the unit.

9

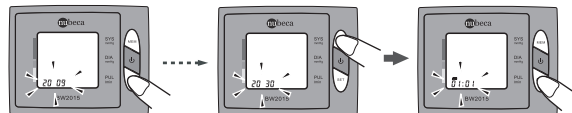
## Adjusting Settings

### ► 1. To set year

1.1 All information will appear on the display when the batteries are installed at the first time. After 2 seconds the year flashes on the display. Finally, press the "SET" button and continue with step 2.

1.2 The mark of year appears and flashes after press the "SET" button for 3~4 seconds, while the unit is off. Finally, press the "SET" button again and continue with step 2.

Then press the "MEM" button one time for increasing one year, twice for two years, so on and so forth. Long press the "MEM" button and the value quickly increases.



⚠ The year can be set between 2009 and 2030, and it will return to 2009 when the display of year up to 2030.

10

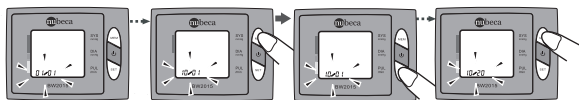
## Adjusting Settings

### ► 2. To set date and time

Press the "MEM" button to change the month and press the "SET" button and continue with next step. Then set the day, the time system conversion, the hour and the minute by using the same way. Continue with step 3.

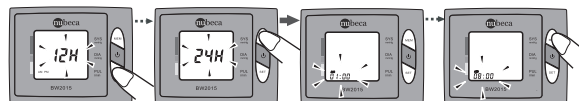
#### Month Setting

#### Day Setting



#### time system conversion

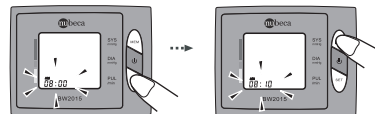
#### Hour Setting



11

## Adjusting Settings

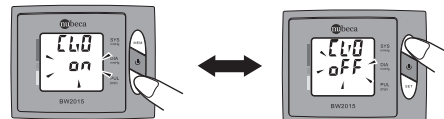
#### Minute Setting



### ► 3. To set displaying of the date and time

Press the "MEM" button and confirm whether the unit displays the date and time after turning off.

Then press the "SET" button and continue with step 4.

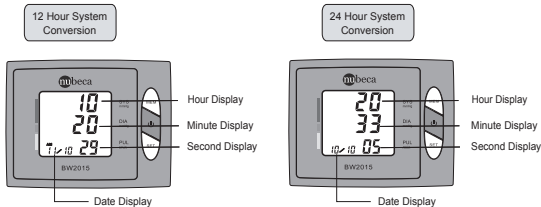


12

## Adjusting Settings



When the display function of the date and time is ON, the LCD will display "00".  
When the display function of the date and time is OFF, the LCD will display "OFF".



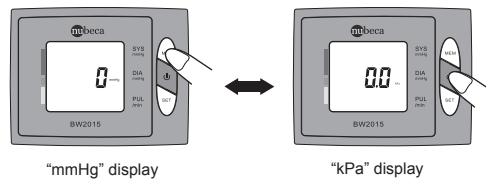
If select to display the date and time, the current date and time will display when turned off.

13

## Adjusting Settings

### ► 4. To set unit

Then press the "MEM" button to change the current unit. (kPa or mmHg)  
Press the "SET" button and return the step 1.  
Press the "⏻" button to save the current setting and turn off.



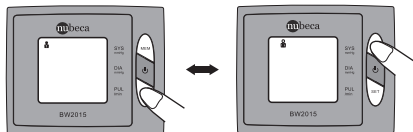
14

## Adjusting Settings

### ► 5. To set user

Press the "SET" button and the mark of a user will appear when turned off or the display function of the date and time is ON. Then press the "MEM" button to change the current user.

Finally, press the "⏻" button to confirm user and turn off.

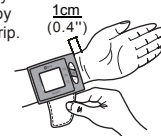


You can stop the setting anytime when you press the "⏻" button to save the current setting and turn off.  
If select to display the date and time, the current date and time will display when turned off.

15

## Proper Way of Measurement

- 1 Remove all clothes from your arm allowing the cuff to fit directly on the skin.
- 2 Wrap the cuff tightly around your wrist by using the Velcro strip.



- 3 Sit in a chair with your feet flat on the floor.

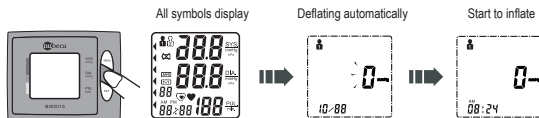


16

## Take a Measurement

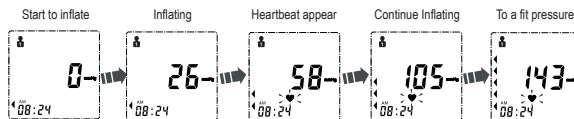
### 1 Press the “⏻” button.

All display symbols appear.



### 2 Measurement starts while inflating.

The heartbeat symbol “♥” flashes once a pulse is detected.

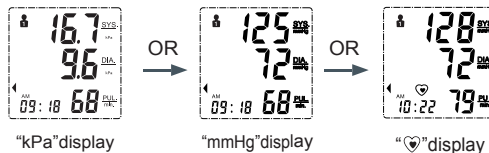


17

## Take a Measurement

### 3 The blood pressure and pulse rate are displayed when the measurement completed.

The cuff is deflated automatically, and the measurement results are stored in memory with date and time. The “♥” symbol will be displayed if irregular heartbeat is detected.



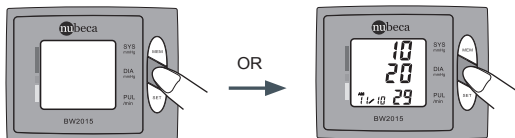
18

## Take a Measurement

### 4 Press the “⏻” button to turn off the unit.

The unit will automatically turn off after two minutes if you have forgotten to turn it off.

If select to display the date and time, the current date and time will display when turned off.



#### NOTE:

To stop the inflation or measurement, press the “⏻” button in anytime.  
The unit will stop inflating and then release and turn off.

19

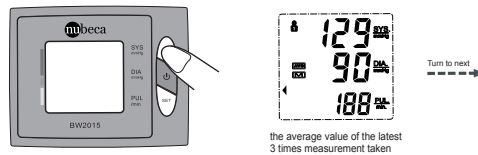
## Use the Memory Function

- The unit stores the blood pressure and pulse rate in the memory after completing a measurement every time. It can automatically store 90 sets measurement values. The earliest record is deleted to save the latest measurement value when more than 90 sets.

- The unit also calculates an average reading based on the values of the latest 3 times measurement taken.

### ► To read the average value .....

- Press the “MEM” button, the average value of the latest 3 times measurement taken of the current user will display with the average reading.



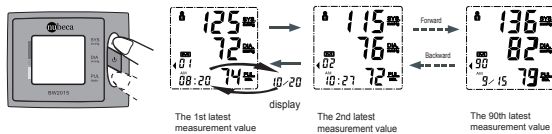
the average value of the latest 3 times measurement taken

20

## Use the Memory Function

### ► To read the measurement value.....

- Press the "MEM" button to display the set of measurement values with the measuring date from the oldest to the most recent.
- Press the "SET" button to display the next set of measurement values with the measuring date from the most recent to the oldest.
- Long press the button and the value quickly changes.



21

## Use the Memory Function

### ► To delete the memory value.....

- In the memory reading mode, press the "SET" button for 4-6 seconds, the unit will display "dEL no".
- Press the "MEM" button and confirm "dEL YES" or "dEL no".
- If you are sure all the data of corresponding user can be deleted, press the "⏻" button, all the corresponding user's data will be deleted and the unit will turn off.



Note: If you have set "dEL YES", but do not press a button for 2 minutes, the unit will turn off automatically, but the corresponding user's blood pressure data will not be deleted. The delete operation must be confirmed by user.

After the measurement finished and when reading the memory values, the backlight is on about 10 seconds.

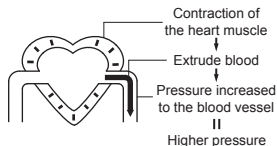
22

## About Blood Pressure

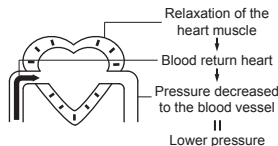
### Blood Circulation.....

The blood circulation is responsible for supplying the body with oxygen. blood pressure is the pressure exerted on the arteries. The systolic blood pressure value (higher pressure or top value) represents the blood pressure produced by contraction of the heart muscle. The diastolic blood pressure value (lower pressure or lower value) represents the blood pressure produced by relaxation of the heart muscle.

#### Systolic Blood Pressure



#### Diastolic Blood Pressure

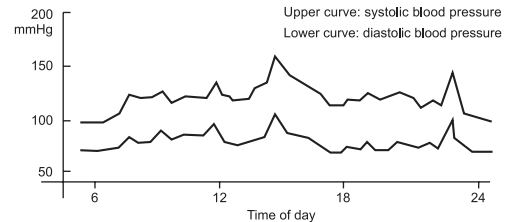


23

## About Blood Pressure

### Health and Blood Pressure.....

The incidence of hypertension increases with age. In addition, a lack of exercise, excess body fat and high levels of cholesterol (LDL), which sticks to the inside in blood vessels, reduces elasticity of these vessels. Hypertension accelerates arterial sclerosis which can lead to very serious conditions such as stroke and myocardial infarction. For these reasons it is very important to know whether the blood pressure is within a healthy range. Blood pressure fluctuates from minute to minute, throughout the day. Therefore it is essential to take regular measurements to help you identify an average blood pressure.



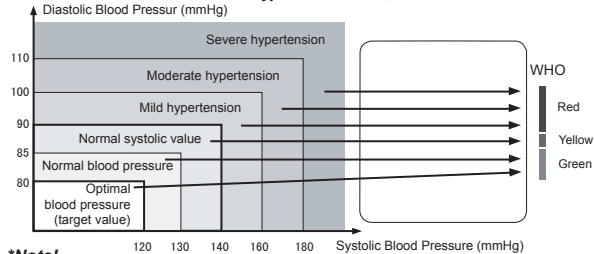
24

## About Blood Pressure

### Classification of Blood Pressure .....

After each measurement is completed, the LCD display will show your position automatically on the six segments of the bar indicator which corresponds to World Health Organization (WHO) Blood Pressure Indicator.

#### Reference Material: Journal of Hypertension 1999, Vol 17 No.2



#### \*Note!

When a person's systolic and diastolic pressures fall into different categories, the higher category should apply.

25

## About Blood Pressure

### Classification of Blood Pressure .....

#### Symptoms of High Blood Pressure

High blood pressure can go unnoticed for a long time, since it doesn't cause noticeable symptoms. The following are all possible causes of abnormally high blood pressure:

- Overweight;
- High cholesterol level;
- Smoking;
- Excessive alcohol consumption;
- Stress and emotional upset;
- Excessive consumption of salt;
- Lack of physical exercise;
- Genetic / hereditary predisposition;
- Underlying illnesses, such as kidney disorders or endocrine disturbance.

#### Treatment of High Blood Pressure

If your blood pressure reaches upper values of 140~160 mmHg and lower values of 90~95 mmHg in repeated measurements over several days, you should consult your doctor for detailed medical examination. You can assist the treatment prescribed by your doctor in the following ways:

- Loose weight and lower your cholesterol level;
- Reduce the consumption of alcohol;
- Reduce the intake of salt;
- Stop smoking;
- Take regular exercise;
- Monitor your blood pressure.

26

## Exceptional Situations

### Error Indicators .....

■ The following symbol will appear on the display when measuring abnormally.

Symbol	Cause	Correction
	The course of inflating appears error.	Wrap the cuff correctly and tightly. Inflate over again after ensuring.
	When measurement fails.	Do not move your arm and body, and keep quiet. Measure over again according to correct way.
	When the batteries power are too low.	Replace both of the worn batteries with two new ones.

27

## Exceptional Situations

### Eliminate Fault .....

Problem	Causes and Solutions
No power.	Replace both of the worn batteries with two new ones.
No display appears on the display screen.	Check the battery installation for proper placement of the batteries polarities.
Measurement values appear too high or too low.	Blood pressure varies constantly. Many factors including stress, time of day, how you wrap the cuff, may affect your blood pressure. Review the sections "Proper Way of Measurement" and "Take a Measurement".

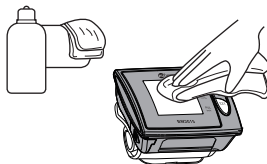
28



## Care and Maintenance

### Care

- Keep the unit in the storage case when not in use.
- Clean the unit with a soft dry cloth. Do not use any abrasive or volatile cleaners.
- Never immerse the unit or any components in water.



⚠ Avoid subjecting the monitor to strong shocks or vibrations, such as dropping the unit on the floor.

※ Use the unit consistent with the instructions provided in this manual. Use only authorized parts and accessories.

29

## Care and Maintenance

### Maintenance

- Do not clean the body and cuff with naphtha, thinner or gasoline etc.
- Do not wet the cuff or attempt to clean the cuff with water.



- Store the unit in a clean and dry location. Do not subject the unit to extreme hot or cold temperature, humidity and direct sunlight.

- Remove the batteries if the unit will not be used for 3 months or longer. Always replace both of the batteries with new ones at the same time.



30

## Specifications

Model No.	BW2015	
Display	LCD Digital Display	
Measuring Principle	Oscillometric Method	
Measurable Circumference of Wrist	13.5~21.5cm (5.3"~8.5")	
Electric Shock Protection	Internal power supply appliance type B	
Measurement Range	Pressure	0 to 299 mmHg (0~39.9 kPa)
	Pulse	40 to 180 Pulses/min
Accuracy	Pressure	± 3 mmHg (0.4kPa)
	Pulse	± 5% of reading
LCD Indication	Pressure	3 Digits Display of mmHg or kPa
	Pulse	3 Digits Display
	Symbol	Memory/IHB/Heartbeat/Low Battery, etc.

31

## Specifications

Inflation	Automatic by Internal Pump	
Rapid Air Release	Automatic by Air Valve	
Memory Function	Memory 180 (2*90) Sets Measurement Values	
Power Source	2 AAA Alkaline Batteries;d.c.3V	
Automatic Power-Off	In 2 Minutes	
Gross Weight	Approx. 110g (Batteries not included)	
Operating Environment	Temperature	10 ~ 40°C (50 ~ 104°F)
	Humidity	15 ~ 90%RH (Noncondensing)
Storage Environment	Barometric Pressure	80~105 kPa
	Temperature	-20 ~ 60°C (-4 ~ 140°F)
	Humidity	10 ~ 95%RH (Noncondensing)

32

## Statement

- The intended use: The unit is intended to be used by adults at home or medical centre to measure blood pressure and pulse rate.
- The unit satisfies the requirements of IEC60601-1 Medical electrical equipment, EN1060-1: Non-invasive sphygmomanometer, EN1060-3: Non-invasive sphygmomanometer, IEC60601-2-30: Non-invasive sphygmomanometer.
- The unit has passed the EMC Test.
- Blood pressure measurements determined with this device are equivalent to those obtained by a trained observer using the cuff/stethoscope auscultatory method, within the limits prescribed by the American National Standard, Manual, electronic, or automated sphygmomanometers.
- The risk of patient and user can be lowered to acceptable level.
- Substitution of a cuff different from that supplied might result in measurement error.
- Please contact us if you need the circuit diagrams, component part lists etc.
- Specifications are subject to change without notice due to improvements in performance.

33

## Warranty Information

- Federal law restricts this device to sale by or on the order of a physician.
- The unit, excluding the unit cuff, is guaranteed to be free of defects in workmanship and materials for a period of two years from the date listed on the purchase record, when used in accordance with the instructions provided with the unit. The unit cuff is warranted to be free from defects in materials and workmanship appearing within one year from the date listed on the purchase record when the unit is used in accordance with the instructions provided with the unit.
- For repair under this warranty. Our authorized service agent must be advised of the fault within the period of the warranty. This warranty covers parts and labor only under normal operations. A transportation fee or freight fee that may be incurred will be the owner's responsibility. Any defect resulting from natural causes, e.g., flood, hurricane etc., is not within this guarantee. This guarantee does not cover damage incurred by use of the unit not in accordance with the instructions, accidental damage, or being tampered with or serviced by unauthorized service agents.
- Unit subjected to misuse, abuse, and neglect of these manual contents, non-instructional purposes; unauthorized repair or modifications will be excluded from this warranty. This guarantee specifically excludes expendables and consumables, for example batteries. All warranty claims must be directed to the distributor responsible for the sale of the device. The content of this warranty is subject to change without further notice.

34

## Warranty Information

- Periodical check:  
Sensitive measuring devices must be checked from time to time for accuracy and leakage, we therefore recommend that the performance should be checked every 2 years and after maintenance and repair.  
Please contact the local distributor for details.

35