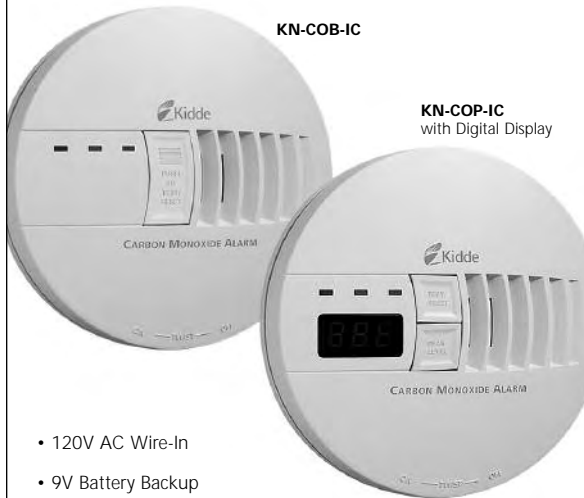




Carbon Monoxide Alarm User's Guide

Models: **KN-COB-IC** and **KN-COP-IC**



KN-COB-IC

KN-COP-IC
with Digital Display

- 120V AC Wire-In
- 9V Battery Backup
- Interconnectable with other Kidde alarms

ATTENTION: Please take a few minutes to thoroughly read this user's guide which should be saved for future reference and passed on to any subsequent owner.

What to do When the Alarm Sounds!

Carbon Monoxide Alarm Procedure



WARNING: Activation of the CO Alarm indicates the presence of Carbon Monoxide (CO) which can kill you.

- 1) Operate the Test/Reset button;
- 2) Call your emergency services (Fire Department or 911);

PHONE NUMBER:

- 3) Immediately move to fresh air - outdoors or by an open door/window. Do a head count to check that all persons are accounted for. Do not reenter the premises nor move away from the open door/window until the emergency services responders have arrived, the premises have been aired out, and your alarm remains in its normal condition.

- 4) After following steps 1-3, if the alarm reactivates within a 24 hour period, repeat steps 1-3 and call a qualified appliance technician to investigate sources of CO from fuel burning equipment and appliances, and to inspect for proper operation of equipment.

PHONE NUMBER:

If problems are identified during this inspection, have the equipment serviced immediately. Note any combustion equipment not inspected by the technician and consult the manufacturer's instructions, or contact the manufacturer directly for more information about CO safety and the equipment. Make sure that motor vehicles are not, or have not been, operating in a garage attached or adjacent to the residence.

Never restart the source of a CO problem until it has been corrected. Never ignore the sound of the alarm!

If the alarm is sounding, pressing the test/reset button will terminate the alarm. If the CO condition that caused the alert in the first place continues, the alarm will reactivate. If the unit alarms again within six minutes, it is sensing high levels of CO which can quickly become a dangerous situation.

Welcome

Note: Many times throughout this User's Guide, we will refer to Carbon Monoxide as "CO".

This Kidde carbon monoxide (CO) alarm is an important part of your family's home safety plan. This alarm has been designed and tested to detect CO buildup in a residential environment. Your alarm is for use specifically in the home. As an owner of a CO alarm, there are some basic facts you should know about for your protection.

Many people think that CO alarms operate like smoke alarms. Like smoke alarms, CO alarms monitor the air in your home and sound a loud alarm to warn you of trouble. The way you respond to a CO alarm is quite different than a smoke alarm. That's because a house fire and a CO problem are two distinctly different situations. If your smoke alarm were to alarm, you would quickly be able to judge the level of danger you were in with your senses. You can see and smell the smoke, feel the heat, see, and possibly hear the fire burning. You can also readily see if your smoke alarm is alarming in a non-emergency situation. Because your sense of sight, smell, hearing and touch give you information, you can almost instantly judge what action to take if you hear your smoke alarm.

CO is an invisible, odorless, tasteless and non-irritating gas – completely undetectable to your senses. That's why it is important to your safety that you have a CO alarm.

Important Warning Statements

IMPORTANT: This carbon monoxide alarm is designed to detect carbon monoxide from ANY source of combustion. It is NOT designed to detect smoke, fire, or any other gas.

WARNING: Carbon monoxide alarms are not smoke alarms. This carbon monoxide alarm is not a substitute for installing and maintaining an appropriate number of smoke alarms in your home.

This carbon monoxide alarm will not sense smoke, fire, or any poisonous gas other than carbon monoxide even though carbon monoxide can be generated by fire. For this reason you must install smoke alarms to provide early warning of fire and to protect you and your family from fire and its related hazards.

CAUTION: This alarm will only indicate the presence of carbon monoxide at the sensor. Carbon monoxide may be present in other areas.

Important Warning Statements

WARNING: This product is intended for use in ordinary indoor locations of family living units. It is not designed to measure compliance with Occupational Safety and Health Administration (OSHA), commercial or industrial standards. It is not suitable for installation in hazardous locations as defined in the National Electric Code.

The installation of this device should not be used as a substitute for proper installation, use and maintenance of fuel burning appliances, including appropriate ventilation and exhaust systems. It does not prevent CO from occurring, nor can it solve and existing CO problem.

WARNING: This device is designed to protect individuals from acute effects of carbon monoxide exposure. It may not fully safeguard individuals with specific medical conditions. If in doubt, consult a medical practitioner.

Individuals with medical problems may consider using warning devices which provide audible and visual signals for carbon monoxide concentrations under 30 PPM.

This carbon monoxide alarm requires a continuous supply of electrical power – it will not work without power. Models without battery backup will not operate during power failure.

This alarm has not been investigated for carbon monoxide detection below 70 PPM.

Contents of This User's Guide

1. Information About Carbon Monoxide
2. Product Features and Specifications
3. Installation Locations
4. Installation Instructions
5. Alarm Characteristics
6. KN-COB-IC Operating Characteristics
7. KN-COP-IC (with digital display) Operating Characteristics
8. Maintenance
9. Limited Warranty

1. Information About Carbon Monoxide

General Carbon Monoxide Information

Carbon monoxide is a colorless, odorless and tasteless poison gas that can be fatal when inhaled. CO inhibits the blood's capacity to carry oxygen.

Periodically review this alarm manual and discuss your CO alarm emergency procedure with all the members of your family. Never ignore a CO alarm. A true alarm is an indication of potentially dangerous levels of CO. CO alarms are designed to alert you to the presence of CO before an emergency – before most people would experience symptoms of CO poisoning, giving you time to resolve the problem calmly.

Determine if anyone in the household is experiencing symptoms of CO poisoning. Many cases of reported CO poisoning indicate that while victims are aware they are not well, they become so disoriented they are unable to save themselves by either exiting the building or calling for assistance. Also, young children and household pets may be the first affected. You should take extra precautions to protect high-risk persons from CO exposure because they may experience ill effects from CO at levels that would not ordinarily affect a healthy adult.

Symptoms of CO Poisoning

The following common symptoms are related to CO poisoning and should be discussed with ALL members of the household.

Mild Exposure:

Slight headache, nausea, vomiting, fatigue (often described as "flu-like" symptoms).

Medium Exposure:

Severe throbbing headache, drowsiness, confusion, fast heart rate.

Extreme Exposure:

Unconsciousness, convulsions, cardio-respiratory failure, death.

If you experience even mild symptoms of CO poisoning, consult your doctor immediately!

1. Information About Carbon Monoxide

Carbon Monoxide PPM Levels (model KN-COP-IC with digital display only)

Model KN-COP-IC is equipped with a digital display that shows levels of CO (displayed in PPM – parts per million). Learn the difference between dangerous, high, mid and low levels.

Dangerous Levels:

When someone is experiencing symptoms of CO poisoning and CO readings are generally above 100 PPM. Anytime someone is experiencing the symptoms of CO poisoning this should be treated as an emergency. See “What to do When the Alarm Sounds” (inside front cover).

High Levels:

Generally above 100 PPM, with no one experiencing symptoms. This should be treated as an urgent situation. See “What to do When the Alarm Sounds” (inside front cover).

Mid Levels:

Generally between 50 PPM to 100 PPM. This should be cause for concern and should not be ignored or dismissed. See “What to do When the Alarm Sounds” (inside front cover).

Low Levels:

Generally below 50 PPM. Kidde recommends you take action to eliminate the source of CO. See “What to do When the Alarm Sounds” (inside front cover).

IMPORTANT: Model KN-COB-IC does not have a digital display and does not display carbon monoxide levels in PPM. If the alarm sounds, it should be treated as a potentially serious condition. See “What to do When the Alarm Sounds” (inside front cover).

Possible Sources of Carbon Monoxide

Inside your home, appliances used for heating and cooking are the most likely sources of CO. Vehicles running in attached garages can also produce dangerous levels of CO.

CO can be produced when burning any fossil fuel, such as gasoline, propane, natural gas, oil and wood. It can be produced by any fuel-burning appliance that is malfunctioning, improperly installed, or not ventilated correctly, such as:

- Automobiles, furnaces, gas ranges/stoves, gas clothes dryers, water heaters, portable fuel burning space heaters and generators, fireplaces, wood-burning stoves and certain swimming pool heaters.

1. Information About Carbon Monoxide

- Blocked chimneys or flues, back drafts and changes in air pressure, corroded or disconnected vent pipes, loose or cracked furnace exchangers.
- Vehicles and other combustion engines running in an open or closed garage, attached or near a home.
- Burning charcoal or fuel in grills and hibachis in an enclosed area.

Conditions That Can Produce Carbon Monoxide

The following conditions can result in transient CO situations:

- Excessive spillage or reverse venting of fuel-burning appliances caused by outdoor ambient conditions, such as, wind direction and/or velocity, including high gusts of wind, heavy air in the vent pipes (cold/humid air with extended periods between cycles).
- Negative pressure resulting from the use of exhaust fans.
- Simultaneous operation of several fuel-burning appliances competing for limited internal air.
- Vent pipe connections vibrating loose from clothes dryers, furnaces, or water heaters.
- Obstructions in, or unconventional, vent pipe designs which can amplify the above situations.
- Extended operation of unvented fuel-burning devices (range, oven, fireplace, etc.).
- Temperature inversions which can trap exhaust gases near the ground.
- Vehicle idling in an open or closed garage, or near a home.

To be safe, know the possible sources of CO in your home. Keep fuel-burning appliances and their chimneys and vents in good working condition. Learn the early symptoms of exposure, and if you suspect CO poisoning, move outside to fresh air and get emergency help. Your first line of defense is an annual inspection and regular maintenance of your appliances. Contact a licensed contractor or call your local utility company for assistance.

Information About Carbon Monoxide Alarms – What They Can and Cannot Do:

CO alarms provide early warning of the presence of CO, usually before a healthy adult would experience symptoms. This early warning is possible, however, only if your CO alarm is located, installed and maintained as described in this guide.

1. Information About Carbon Monoxide

Because carbon monoxide is a cumulative poison, long-term exposures to low levels may cause symptoms, as well as short-term exposures to high levels. This Kidde unit has a time-weighted alarm – the higher the level of CO present, the sooner the alarm will be triggered.

This CO alarm can only warn you of the presence of CO. It does not prevent CO from occurring, nor can it solve an existing CO problem. If your unit has alarmed and you've provided ventilation by leaving your windows and doors open, the CO buildup may have dissipated by the time help responds. Although your problem may appear to be temporarily solved, it's crucial that the source of the CO is determined and that the appropriate repairs are made.

This CO alarm is designed to act as a monitor; it is not designed for use as a short-term testing device to perform a quick check for the presence of CO.

CO alarms have limitations. Like any other electronic device, CO alarms are not fool-proof. CO alarms have a limited operational life. You must test your CO alarm weekly, because it could fail to operate at any time.

If your CO alarm fails to test properly, or if its self-diagnostic test reveals a malfunction, immediately have the unit replaced. This alarm will not monitor CO levels while in an error condition.

CO alarms can only sense CO that reaches the unit's sensor. It's possible that CO may be present in other areas without reaching the alarm. The rate and ability that which CO reaches the alarm may be affected by:

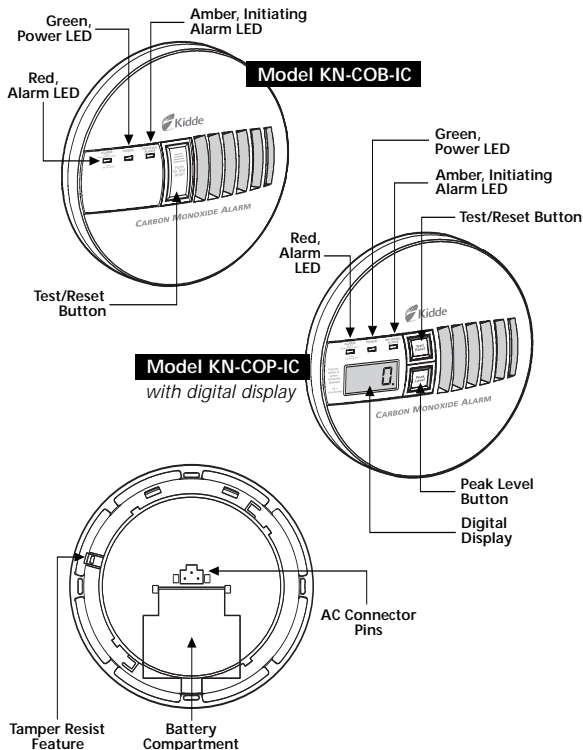
- Doors or other obstructions.
- Fresh air from a vent, an open window or other source.
- CO being present on one level of the home and not reach a CO alarm installed on a different level. (For example, CO in the basement may not reach an alarm on the second level, near the bedrooms).

For these reasons, we recommend you provide complete coverage by placing a CO alarm on every level of the home. Please carefully read all information in sections 2 and 3 on properly installing this CO alarm.

CO alarms should not be used to detect the presence of natural gas (methane), propane, butane, or other combustible fuels.

Instruct children never to touch, unplug or otherwise interfere with the alarm. Warn children of the dangers of CO poisoning.

2. Product Features and Specifications



IMPORTANT: Seven (7) years after the initial power up, this alarm will “beep” every 30 seconds to indicate that it is time to replace the alarm. Replace the alarm immediately! It will not detect CO in this condition.

To help identify the date to replace the alarm, a label has been affixed to the side of the alarm. Write the “replace by” date (seven years from power up) in a permanent marker on this label.

2. Product Features and Specifications

Temperature:

Operating Range: 40°F (4.4°C) to 100°F (37.8°C)

Humidity:

Operating range: 10-95% non-condensing

Audible Alarm:

85+ dB at 10' @ 3.4±0.5 KHz pulsing alarm

Sensor:

Electrochemical

Power:

120 volts AC, 60 Hz, 60 mA max, 9 volt battery back-up

Accuracy of Digital Display (Model KN-COP-IC only):

30-999 PPM +/-30% when measured in conditions of 80° F (+/- 10° F), atmospheric pressure +/- 10% and 40% +/- 3% relative humidity. Display readings may vary slightly depending on changes in the ambient condition (temperature, humidity) and the condition of the sensor.

Alarm Response Times:

70 PPM = 60-240 min., 150 PPM = 10-50 min., 400 PPM = 4-15 min.

Interconnection with Other Alarms:

This Kidde CO alarm can be used as a single-station alarm or interconnected with other Kidde alarms. This alarm can be interconnected directly with these Kidde models:

Ion smoke alarm models:

1235, 1235CA, 1275, 1275CA, 1276, 1276CA, 1285, 1285CA, i12020, i12040, i12060, i12080, i12020CA, i12040CA, i12060CA

Photo smoke alarm models:

PE120, PE120CA, PI2000, PI2000CA

Heat alarm models:

HD135F, HD135FCA

Carbon monoxide/ion smoke alarm models:

KN-COSM-IB, KN-COSM-IBCA

Carbon monoxide alarm models:

KN-COB-IC, KN-COP-IC, KN-COB-ICB, KN-COP-ICB

Relay models:

CO120X, SM120X

Strobe Light models:

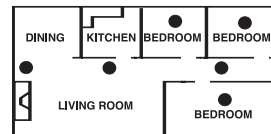
SL1771

3. Installation Locations

Recommended Installation Locations

CO alarms should be mounted in or near bedrooms and living areas. It is recommended that you install a Kidde CO alarm on each level of your home.

When choosing your installation locations, make sure you can hear the alarm from all sleeping areas. If you install only one CO alarm in your home, install it near bedrooms, not in the basement or furnace room.



Recommended Locations

- When wall mounting, place out of reach of children. Under no circumstances should children be allowed to handle the CO alarm.
- Placing the alarm at eye level allows for optimum monitoring of the digital display.

Locations To Avoid

IMPORTANT: Improper location can affect the sensitive electronic components in this alarm. To avoid causing damage to the unit, to provide optimum performance, and to prevent unnecessary nuisance alarms:

- Do not install in kitchens, garages or furnace rooms that may expose the sensor to substances that could damage or contaminate it.
- Do not install in areas where the temperature is colder than 40°F (4.4°C) or hotter than 100°F (37.8°C) such as crawl spaces, attics, porches and garages.
- Do not install within 5 ft. of heating or cooking appliances. (Kidde recommends 15 ft. to prevent nuisance alarms).
- Do not install near vents, flues, chimneys or any forced/unforced air ventilation openings.
- Do not install near ceiling fans, doors, windows or areas directly exposed to the weather.
- Do not install in dead air spaces, such as peaks of vaulted ceilings or gabled roofs, where CO may not reach the sensor in time to provide early warning.
- Do not install on a switched or dimmer-controlled outlet.
- Do not install this unit near deep-cell large batteries. Large batteries have emissions that can cause the alarm to perform at less than optimum performance.

3. Installation Locations

- Do not obstruct the vents located on the alarm. Do not place the alarm where drapes, furniture or other objects block the flow of air to the vents.

4. Installation Instructions

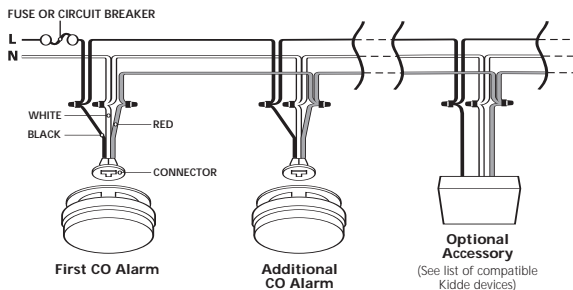
Interconnecting

CAUTION: Kidde (Fyrnetics/Lifesaver/Kidde/Nighthawk/Pyrene) alarms and accessories can only be interconnected with other Kidde alarms and accessories. Connection of these devices to another manufacturer's interconnect system, or connection with equipment from another manufacturer into an existing Kidde interconnect system could result in nuisance alarming, failure to alarm, or damage to one or all of the devices in the interconnect system.

- When compatible Kidde smoke alarms and heat alarms are interconnected to your CO alarm, they will only respond to a smoke or heat related event.
- When mixing Kidde alarms which have battery back-up with models without battery back-up, be advised that the models without battery back-up will not function during an AC power failure.
- For alarms that are being used as single station alarms, do not connect the red wire to anything. Leave the red wire insulating cap in place to make certain that the red wire cannot contact any metal parts or the electrical box.
- The appropriate power source is 120 Volt AC Single-Phase supplied from a non-switchable circuit, which is not protected by a ground fault interrupter.
- All interconnectable alarms should be installed on a UL Listed or recognized junction box. All connections should be made by a qualified electrician and must conform to article 760 of the U.S. National Electrical Code, NFPA 72 and/or any other codes having jurisdiction in your area.
- When alarms are interconnected, all interconnected units must be powered from a single circuit.
- A maximum of 24 Kidde devices may be interconnected in a multiple-station arrangement. The interconnect system should not exceed the NFPA interconnect limit of 12 smoke alarms and/or 18 alarms total (smoke, CO, smoke/CO combination, heat, etc.).

4. Installation Instructions

- With 18 alarms interconnected, it is still possible to interconnect up to a total of six remote signaling devices and/or relay modules.
- The maximum wire run distance between the first and last unit in an interconnected system is 1000' (305 m).
- Make certain alarms are wired to a continuous, (non-switched) power line. NOTE: Use standard UL Listed household wire (as required by local codes) available at all electrical supply stores and most hardware stores.



Interconnect Wiring Diagram

Wiring

The diagram above illustrates interconnection wiring. Improper connection will result in damage to the alarm, failure to operate, or a shock hazard.

CAUTION: Turn off the main power to the circuit before wiring the alarm.

Wires on the AC Quick-Connector Alarm Harness:

- Black Connected to live (L) side of AC line
- White Connected to neutral (N) side of AC line
- Red Connected to interconnect lines (red wires) of other units in a multiple-station set-up

4. Installation Instructions

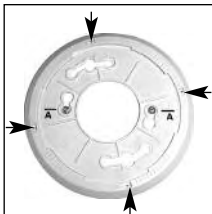
Mounting

- Remove the mounting plate from the back of the alarm by holding the mounting plate and twisting the alarm in the direction indicated by the "OFF" arrow on the alarm cover.
- After selecting the proper location for your CO Alarm and wiring the AC Quick-Connector harness, attach the mounting plate to the electrical box. To ensure aesthetic alignment of the alarm with the hallway, or wall, the "A" line on the mounting plate must be parallel with the hallway when ceiling mounted or horizontal when wall mounted.
- Pull the AC Quick-Connector through the center hole in the mounting plate and secure the bracket, making sure that the mounting screws are positioned in the small ends of the keyholes before tightening.
- Plug the AC Quick-Connector into the back of the alarm, making sure that the locks on the connector snap into the unit. Push the excess wire back into the electrical box through the hole in the center of the mounting plate.
- Install the alarm on the mounting plate and twist the alarm in the direction of the "ON" arrow on the cover until the alarm ratchets into place (this ratcheting function allows for aesthetic alignment). Note: The alarm will mount to the bracket in 4 positions (every 90 degrees).
- Turn on the AC power. The green AC Power On Indicator should be lit when the alarm is operating from AC power.

- For alarms equipped with 9V battery backup:** Pull the Battery Pull Tab (yellow tab protruding from unit) completely out of unit. This will automatically connect the battery.



AC Quick Connector



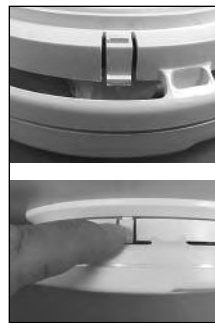
Post Locations

4. Installation Instructions

Tamper Resist Feature

To make this CO alarm somewhat tamper resistant, a tamper resist feature has been provided. Activate the feature by breaking off the four posts in the square holes in the mounting plate. When the posts are broken off, the tamper resist tab on the base is allowed to engage the mounting plate. Rotate the alarm onto the mounting plate until you hear the tamper resist tab snap into place, locking the alarm.

Using the tamper resist feature will deter children and others from removing the alarm. To remove the alarm, press on the tamper resist tab, and rotate the alarm off of the mounting plate.



Tamper Resist Tab

Important Labels Provided

Two labels have been provided that have important information on what to do in case of an alarm. Add the phone number of your emergency service provider in the space provided. Place one label next to the alarm after it is mounted, and one label near a fresh air source such as a door or window.

5. Alarm Characteristics

Carbon Monoxide Alarm Indicator

When the alarm senses a dangerous level of CO, the unit will emit a loud alarm pattern. The alarm pattern is 4 quick beeps followed by 5 seconds of silence. This cycle repeats as long as a dangerous CO conditions exist. The red Alarm LED will flash the same pattern (and the PPM will be displayed on alarms with digital displays).

WARNING: For alarms equipped with 9V battery backup, when powered by battery backup only; after four minutes, the alarm will sound and flash only once every minute, until the alarm is reset or the CO is eliminated.

If this unit is interconnected with other Kidde CO alarms, the amber LED (Initiating Alarm) of the unit which first detected the CO, will light and remain on until reset. The other interconnected CO alarms will also alarm to warn you that CO was detected.

5. Alarm Characteristics

If interconnected to other Kidde alarms and the backup battery (if equipped) is low or missing, or if the unit malfunctions, it will display other readings (and alarm differently) to alert you of specific conditions. Please familiarize yourself, and other family members, to the difference between a CO reading and an indication signifying a problem with the unit itself.

WARNING: If at any time you test the alarm and it does not perform as described, have it replaced immediately.

NOTE: Reference to battery backup operation is only applicable to units that are equipped with battery backup option.

Smoke Alarm Indicator (interconnected with CO Alarms)

When an interconnected Kidde smoke alarm detects smoke, the Kidde CO alarm will sound a smoke/fire alarm pattern of 3 long beeps, followed by 1 second of silence. This cycle repeats as long as smoke signal persists to alert you of the condition. **(For model KN-COP-IC with digital display:** The word "Fire" will scroll across the digital display). If this happens, leave the premises immediately by your escape plan and call your local fire department.

WARNING: This unit is not a smoke alarm and will not detect smoke or fire. It will only alarm for smoke/fire if it receives a signal from an interconnected Kidde smoke alarm.

NOTE: A smoke/fire alarm will override a CO alarm condition.

6. Model KN-COB-IC Operating Characteristics

Whenever the alarm is operating, the green Power LED is illuminated to indicate the unit is monitoring for CO. If the alarm senses dangerous levels of CO, the red Alarm LED will flash and the alarm will emit an audible alarm pattern.

Operating and Alarm Characteristics

Function	LED Display	Alarm Sound	Unit Status	Recommendation
Normal Operation	Green LED constantly on	None	Normal AC operation (sensing no CO) and with a good battery	None
Normal Operation	Green LED flashes every 7 seconds	None	Normal DC operation on 9V battery backup	Verify AC power is restored as soon as possible to conserve battery. Replace battery.

6. Model KN-COB-IC Operating Characteristics

Function	LED Display	Alarm Sound	Unit Status	Recommendation
Carbon monoxide alarm	Red LED flashes with beeps. Amber LED shows initiating alarm	4 quick beeps, 5 seconds silence, repeating	Alarm condition. Dangerous concentrations of CO detected	Refer to "What to do When the Alarm Sounds" (inside front cover)
Smoke / fire alarm	Red LED flashes with beeps	3 long beeps, 1 second silence, repeating	Receiving signal from an interconnected smoke alarm detecting smoke	Evacuate by your escape plan
Low battery	Red LED flashes every 15 seconds	One quick beep every 15 seconds	AC powered and low or missing battery	Install or replace 9V battery.
Error / service alarm	Red LED flashes every 30 seconds	One quick beep every 30 seconds	Unit is in error condition	Replace battery. If "Err" continues, unit has malfunctioned. Replace immediately. Unit will not respond CO
Error	Red LED constantly on	Constant alarm	Very low battery or unit malfunction	
Normal Test/Reset function	Red LED flashes with beeps. Green and amber LEDs on	4 quick beeps, 5 seconds silence, repeated once	Normal operation when Test/Reset button is pressed	CO not detected. Alarm for test purposes only

7. Model KN-COP-IC (with digital display) Operating Characteristics

Whenever the alarm is operating, the green Power LED is illuminated and the digital display will display "0" to indicate the unit is monitoring for CO. If the alarm senses dangerous levels of CO, the red Alarm LED will flash, the digital display will indicate the CO concentration in parts per million (PPM), and the alarm will emit an audible alarm pattern.

This alarm will display a "0" if CO concentrations between 0 and 30 PPM have been detected within the last 15 seconds.

When the unit is first powered up, the digital display will show three "eights" – indicating the alarm is in the start-up mode. The three "eights" will remain for approximately 20 seconds. After 20 seconds, the alarm should display "0" and begin monitoring the air for CO and will continue to do so as long as it receives power.

7. Model KN-COP-IC (with digital display) Operating Characteristics

The following table illustrates the possible digital displays, describes the audible alarm patterns, and the recommended actions to take.

Operating and Alarm Characteristics

LED Display Shows	Alarm Sound	Unit Status	Recommendation
Brief "8888" along with any number between 100 and 300. Red LED flashes with beeps. Green and amber LED's on.	4 quick beeps, 5 seconds silence, repeated once	Self checking when AC powered (Test button was pressed or unit was first powered)	None – CO has not been detected. Numbers shown for test purposes only
Steady "0" Green LED constantly on.	None	Normal AC operation (sensing no CO) and with a good battery	None
"Lb." flashes alternately with any number. Red LED flashes every 15 seconds.	One quick beep every 15 seconds	AC powered and low or missing battery	Install or replace 9V battery.
A steady display of CO concentration from 30-999. Red LED flashes with beeps. Amber LED shows initiating alarm.	4 quick beeps, 5 seconds silence, repeating	Alarm condition. Dangerous concentrations of CO detected	Refer to "What to do When the Alarm Sounds" (inside front cover)
Steady "CO" Red LED flashes with beeps. Amber LED shows initiating alarm	4 quick beeps, 5 seconds silence, repeating	Interconnected CO alarm warning of a CO condition	Refer to "What to do When the Alarm Sounds" (inside front cover)
"Fire" Red LED flashes with beeps	3 long beeps, 1 second silence, repeating	Interconnected smoke alarm warning of a smoke/fire condition	Evacuate by your escape plan
Steady "Err" Red LED flashes every 30 seconds	One quick beep every 30 seconds	Unit malfunction	Replace battery. If "Err" continues, unit has malfunctioned. Replace immediately. Unit will not respond CO
No display alternating with display of CO concentration every 60 seconds. Red LED flashes with beeps	4 quick beeps, 5 seconds silence, repeating every 60 secs	Alarm condition powered on battery backup. Dangerous concentrations of CO detected	Refer to "What to do When the Alarm Sounds" (inside front cover). Replace battery
No display alternating with "0" every 60 seconds. Green LED flashes every 7 seconds	None	Normal operation after first 4 minutes of 9 V battery operation. Unit monitoring for CO	Verify AC power is restored as soon as possible to conserve battery. Replace battery

7. Model KN-COP-IC (with digital display) Operating Characteristics

Peak Level Memory (model KN-COP-IC only)

When the Peak Level button is pressed and held, the display shows the highest CO reading taken by the CO alarm since its last reset or power up. The Peak Level display feature will display levels between 11-999 PPM. Although the Peak Level feature will display levels below 30 PPM, these levels will not result in an alarm no matter how long the device is exposed to these levels. The Peak Level feature is helpful in identifying if you have had a CO reading since resetting the alarm.

Concentrations of CO between 1 and 30 PPM can often occur in normal, everyday conditions. Concentrations of CO below 30 PPM may be an indication of a transient condition that may appear today and never reappear. Some CO conditions may start out as low level leaks but could develop into CO concentrations that may become harmful.

Peak Level Memory Reset

Press the Peak Level button; with the button still pressed, press the Test/Reset button for two seconds and release. The number on the display will turn to "0", the memory will be cleared and the alarm will begin monitoring for CO. The Peak Level memory is also reset when the unit loses power.

8. Maintenance

NOTE: This unit is sealed. The cover is not removable.

Due to the loudness of the alarm, we suggest that you place your fingers over the sounder opening while testing your alarm.

CAUTION: Continuous exposure to the high sound level of this alarm over an extended period of time may cause hearing loss.

Testing

To test the alarm, press the Test/Reset button. If the unit is operating properly, you should hear 4 quick beeps – followed by 5 seconds of silence – followed by 4 quick beeps. **(For model KN-COP-IC with digital display:** The display will show three "eights" and then show a number – usually around 200). The red LED will flash along with the beeps and the amber LED will illuminate. Within several seconds the unit will return to monitor for CO.

If interconnected to Kidde smoke alarms, pressing the Test/Reset button on the CO alarm will have no effect on the smoke alarms. The smoke

8. Maintenance

alarms will not be tested and will not alarm. However, when pressing the Test button on an interconnected smoke alarm, the CO alarm will emit a Smoke/Fire audible and visual alarm pattern of 3 long beeps, 1 second of silence, repeated. **NOTE: You do not need to press the Test button to take a CO reading.**

Battery Replacement (for alarms with battery backup)

These CO alarms are not battery operated. However, these alarms are equipped with 9 volt battery backup – the 9 volt battery is to supply short term back-up during a power outage.

When replacing the battery, use one of the following approved brands:

- Duracell MN1604 or MX1604
- Energizer 522

These batteries can be purchased where you bought the alarm or at a local hardware store. Use of a different battery may have a detrimental effect on the alarm operation.

The 9 volt battery is not rechargeable. If the 9 volt battery is missing, disconnected, or if the battery's power is low, a red LED flash will occur once every 15 seconds, accompanied by an audible beep. If this happens, the battery must be replaced. **(For model KN-COP-IC with digital display: "Lb" will be displayed alternately with the current CO reading once every second).**

IMPORTANT: Constant exposures to high or low humidity may reduce battery life. A good safety measure is to replace the battery at least once a year, or at the same time as you change your clocks for daylight saving time.

Alarm Removal

If the tamper resist feature has been activated, refer to tamper resist feature description in section 4 for removal instructions.

Remove the alarm from the mounting plate by rotating the alarm in the direction of the "OFF" arrow on the cover. To disconnect the AC Quick-Connector harness, squeeze the locking arms on the sides while pulling the connector away from the bottom of the alarm (see section 4).

After the alarm has been removed, you can open the battery door and replace the battery. Battery installation instructions are provided on the inside of the battery door.

When installing the battery, orient the battery as shown on unit label. Press the battery tab down into the battery compartment and install the battery.

8. Maintenance

CAUTION!: If the battery tab is not held down in the battery compartment by the battery, the battery door will not close, the AC Quick-Connector will not attach to the alarm, and the alarm will not attach to the mounting plate.

After installing or changing the battery, reinstall your alarm. Test your alarm by using the Test/Reset button and check that the green "Power" LED is on.

Maintenance Tips

To keep your alarm in good working order, you must follow these simple steps:

- Test the alarm once a week by pressing the Test/Reset button.
- Vacuum the alarm cover once a month to remove accumulated dust.
- Never use detergents or solvents to clean the alarm. Chemicals can permanently damage or temporarily contaminate the sensor.
- Avoid spraying air fresheners, hair spray, paint or other aerosols near the alarm.
- Do not paint the unit. Paint will seal the vents and interfere with proper sensor operation.

Move the CO Alarm to a remote location, to prevent possible damage or contamination of the sensor, prior to performing any of the following:

- Staining or stripping floors or furniture, painting or wall-papering
- Using aerosols or adhesives

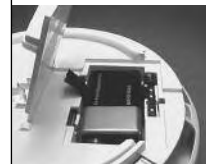
WARNING: Reinstall the CO Alarm as soon as possible to assure continuous protection.

The following is a list of substances that at high levels can damage the sensor or cause temporary readings that are not CO readings:

- Ethylene, ethanol, alcohol, iso-propanol, benzene, toluene, ethyl acetate, hydrogen, hydrogen sulfide and sulfur dioxide.
- Also most aerosol sprays, alcohol based products, paint, thinner, solvent, adhesive, hair spray, after shave, perfume, auto exhaust (cold start) and some cleaning agents.



Battery Tab



Battery Replacement

FIVE YEAR LIMITED WARRANTY

Warranty Coverage: The manufacturer warrants to the original consumer purchaser, that this product (except battery) will be free of defects in material and workmanship for a period of five (5) years from date of purchase. The manufacturer's liability hereunder is limited to replacement of the product, repair of the product or replacement of the product with repaired product at the discretion of the manufacturer. This warranty is void if the product has been damaged by accident, unreasonable use, neglect, tampering or other causes not arising from defects in material or workmanship. This warranty extends to the original consumer purchaser of the product only.

Warranty Disclaimers: Any implied warranties arising out of this sale, including but not limited to the implied warranties of description, merchantability and fitness for a particular purpose, are limited in duration to the above warranty period. In no event shall the Manufacturer be liable for loss of use of this product or for any indirect, special, incidental or consequential damages, or costs, or expenses incurred by the consumer or any other user of this product, whether due to a breach of contract, negligence, strict liability in tort or otherwise. The Manufacturer shall have no liability for any personal injury, property damage or any special, incidental, contingent or consequential damage of any kind resulting from gas leakage, fire or explosion. Some states do not allow limitations on how long an implied warranty lasts, so the above limitation may not apply to you. Some states do not allow the exclusion or limitation of consequential or incidental damages, so the above limitations or exclusions may not apply to you.

Legal Remedies: This warranty gives you specific legal rights and you may also have other rights that vary from state to state.

Warranty Performance: During the above warranty period, your product will be replaced with a comparable product if the defective product is returned in a postage paid package to the following address: Kidde, Customer Service Department, 1016 Corporate Park Drive, Mebane, NC 27302 USA, together with proof of purchase date. Please include a note describing the problem when you return the unit. The replacement product will be in warranty for the remainder of the original warranty period or for six months, whichever is longer. Other than the cost of postage, no charge will be made for replacement of the defective product. In many cases the quickest way to exchange your alarm is to return it to the original place of purchase. If you have questions, call Kidde customer service department.

IMPORTANT: Do not remove unit back cover. Back cover removal will void warranty.

Your Kidde Carbon Monoxide Alarm is not a substitute for property, disability, life or other insurance of any kind. Appropriate insurance coverage is your responsibility. Consult your insurance agent.

Also, Kidde makes no warranty, express or implied, written or oral, including that of merchantability or fitness for any particular purpose, with respect to the battery.

The above warranty may not be altered except in writing signed by both parties hereto.

QUESTIONS OR FOR MORE INFORMATION

Call our Consumer Hotline at **1-800-880-6788** or contact us at our website at **www.kidde.com**



Kidde, 1016 Corporate Park Drive, Mebane, NC 27302