 Good Display	LCD MODULE SPECIFICATIONS	SPEC NO	
	GD121MTLD-GTT104SDH01	REV NO	1.00

Good Display Specifications

Type: Standard
Model No. GD121MTLD-GTT104SDH01
Description:

- 10.4", 800 x600dots, TFT LCD module.
- With white LED backlight
- VGA and VIDEO input.

Prepared: Xiaoli Lan
Checked: Moon Wu
Approved: Boris Jen
Issue Date: 2009.06.18



Good Display

Dalian Good Display Co., Ltd.

No.17 Gonghua Street, Shahekou District, Dalian 116021 China

Tel: +86-411-84619565 Fax: +86-411-84619585

E-mail: sales@good-lcd.com.cn

Website: www.good-lcd.com

www.good-lcd.com.cn

Catalogue

Content	2
Version	3
1. Profile	4
2. Application	4
3. Main parameter	4
4. Block diagram& picture	5
5. Wiring diagram	6
6. Connector definition of driver board	7-8
7. Structural diagram	9-10
8. 10.4" TFT- LCD PANEL Inspection standard	11-12
9. Packing	13
10. Precaution	13

Version

Date	Version	Content
18 th ,june,09	VER:1.00	The first version

1. Profile :

GD121MTLD-GTT104SDH01 Ver:1.00 10.4" Color TFT LCD module is composed of JD121MTLD Ver:1.00 driver board and GTT104SDH01 TFT display. This module provides users with

Video, VGA and Audio(Audio is optional) signal input and automatic identifying and converting of NTSC/PAL systems, built-in OSD(on-screen display) and Infrared Remote Control function. and the OSD menu offers adjustment of brightness, contrast and color etc, and full functions can be controlled by the Remote Control device included. The power control IC is designed for better reliability.

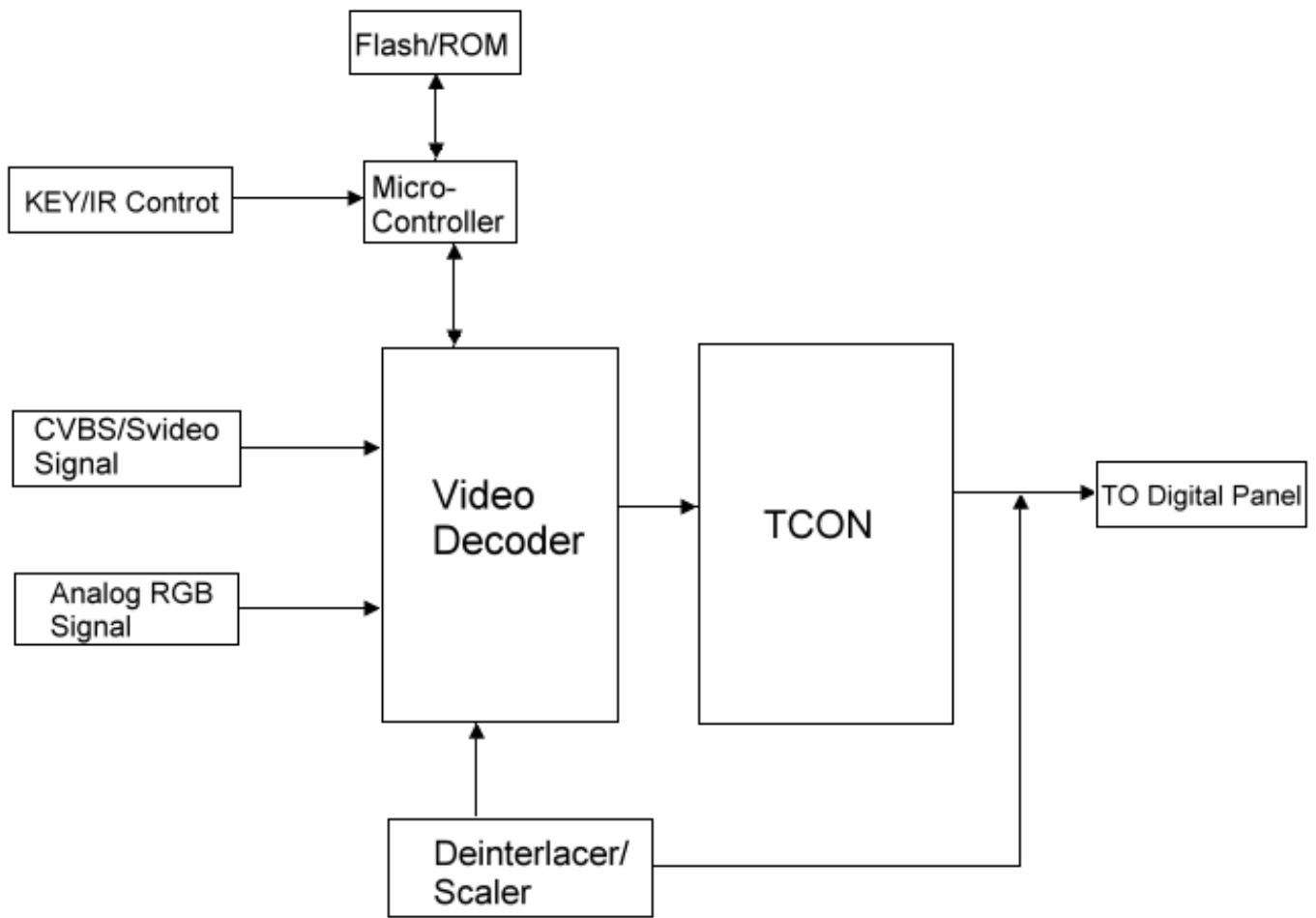
2. Application :

- Office electronic equipment
- Apparatus、 Instrument and measure appliance
- Machinery
- Audiovisual (displayer for car、 Portable DVD、 Long-distance terminal、 LCD TV)
- Home appliance (Video door phone、 Video telephone)

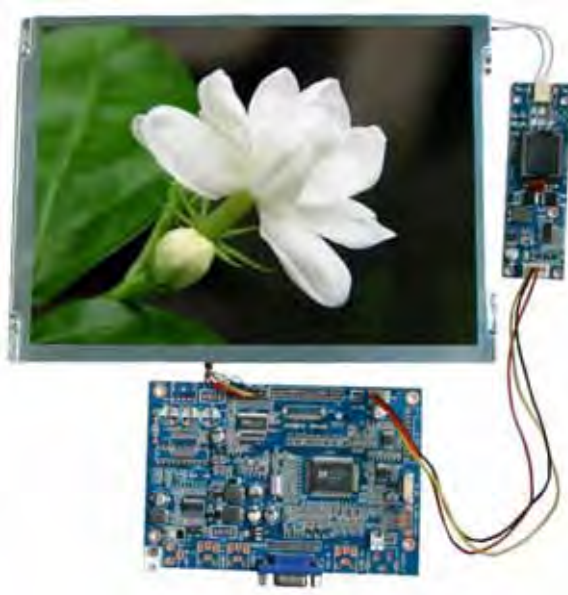
3. Main parameter :

- Product Name : 10.4 " TFT LCD module
- Module Model : GD121MTLD-GTT104SDH01 Ver:1.00
- LCD panel : 10.4 " TFT LCD: GTT104SDH01
- Backlight : LED
- Resolution : 800 (RGB) ×600
- View angle \emptyset (U/D/L/R):(45/65/65/65)
- Brightness : 400cd/m²
- Signal input : Video, VGA and Audio
- System : PAL/NTSC(automatic identifying and converting)
- Power Supply Voltage : DC 12V \pm 25%
- Display dimension of LCD (mm) : 211.2 (W) ×158.4 (H)
- Overall dimension of LCD(mm) : 236.0 (W) ×176.9 (H) ×5.6 (D)
- Structural dimension of PCBA with VGA(mm) : 132.2 (W)×89.9 (H) ×15.40 (D)
- Operation temperature : -20 ~+70
- Relative humidity : 5~95% RH
- Storage temperature : -30 ~+80

4. Block diagram:

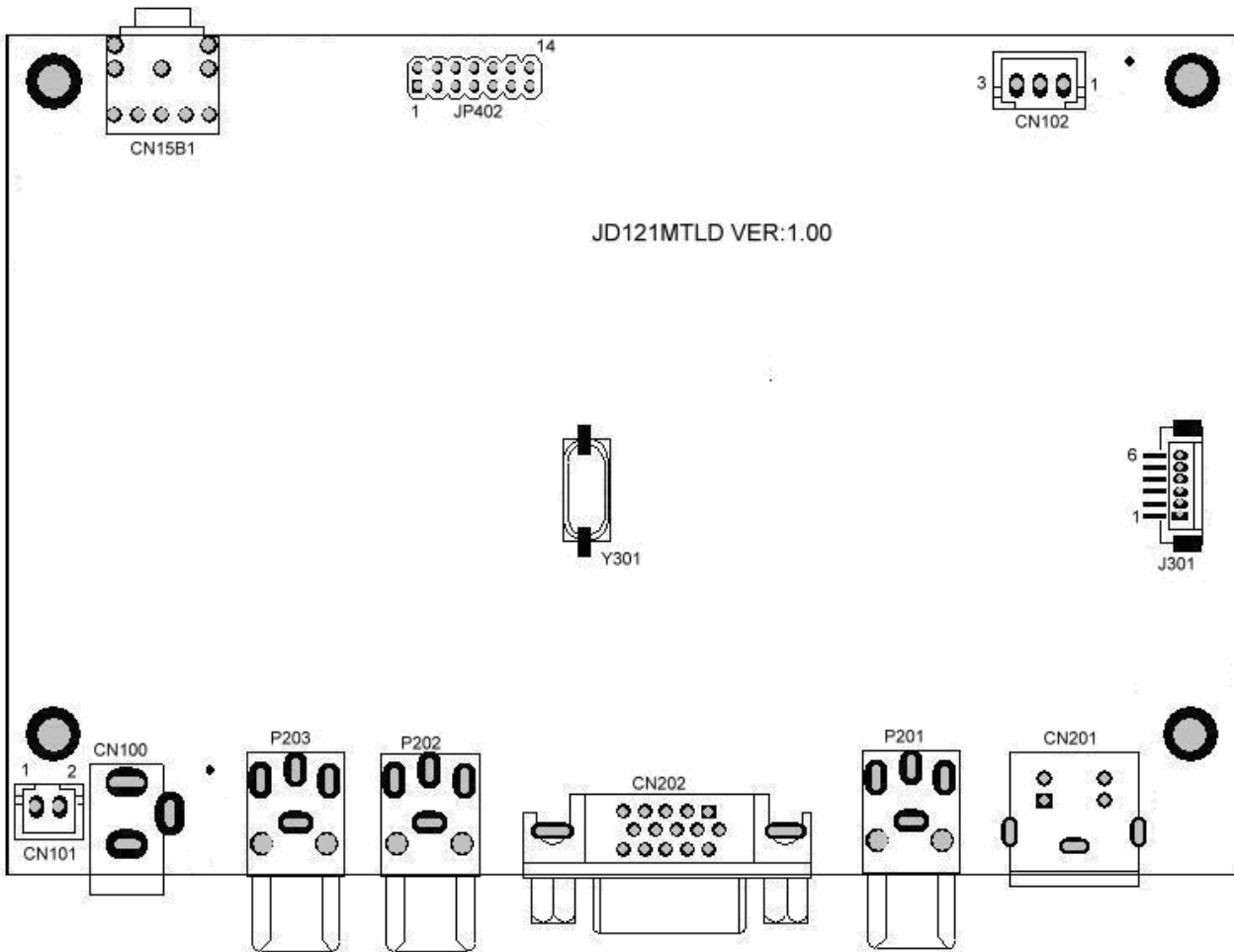


Module picture



5. Wiring diagram

5.1 JD121MTLD driver board :



Key-board :



6、Connector definition of driver board

P203 Audio input /Right track

P202 Audio input/Left track

CN15B1 Audio output

CN202 VGA signal input

P201 VIDEO input

CN201 Y/C input

6.1 Key board definition

Pin No.	Symbol	In/Out	J201 description	Remark
SW4	SOURCE	I	Signal switch	
SW5	POWER	I	Power	
SW6	MENU	I	Menu	
SW7	+	I	add	
SW8	-	I	Minus	

6.2 J301

Pin No.	Symbol	In/Out	Description	Remark
1	+5	O	+5 power output	
2	GND	-	Ground	
3	IR	-	Remote input	
4	SAR0	I	Key input	
5	SAR1	I	Key input	
6	LED	O	LED indicator output	

6.3 CN102

Pin No.	Symbol	In/Out	Description	Remark
1	+12V	O	+12V output	
2	GND	-	Ground	
3	ON/OFF	O	Backlight on/off control	

6.4 CN101

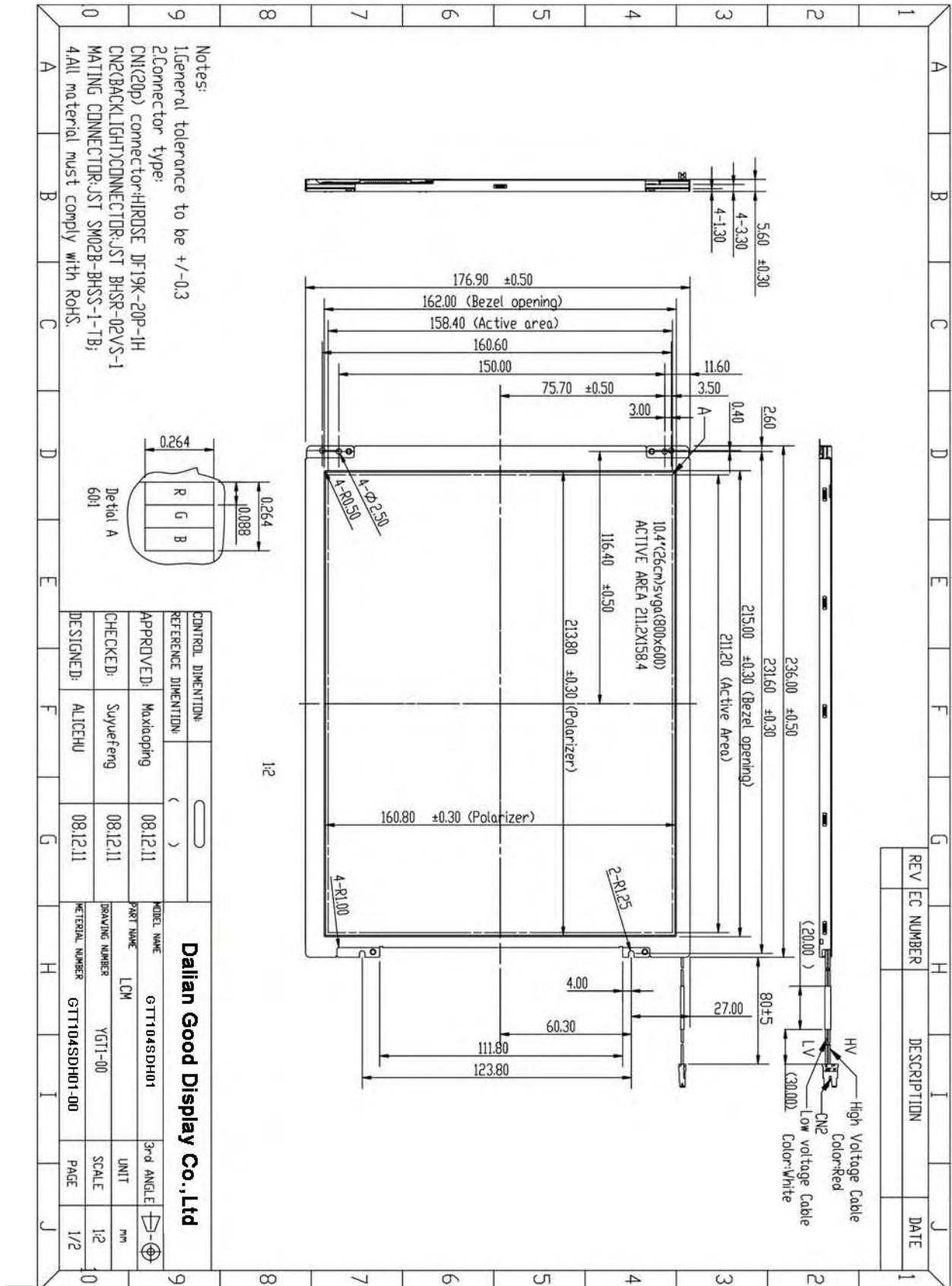
Pin No.	Symbol	In/Out	Description	Remark
1	GND	-	Ground	
2	+12V	I	+12V Power input	

6.5 JP402

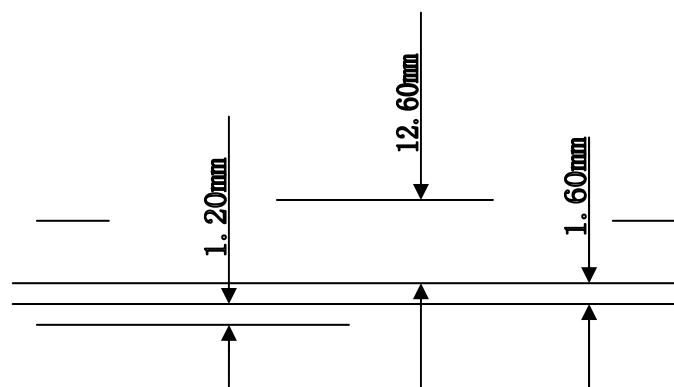
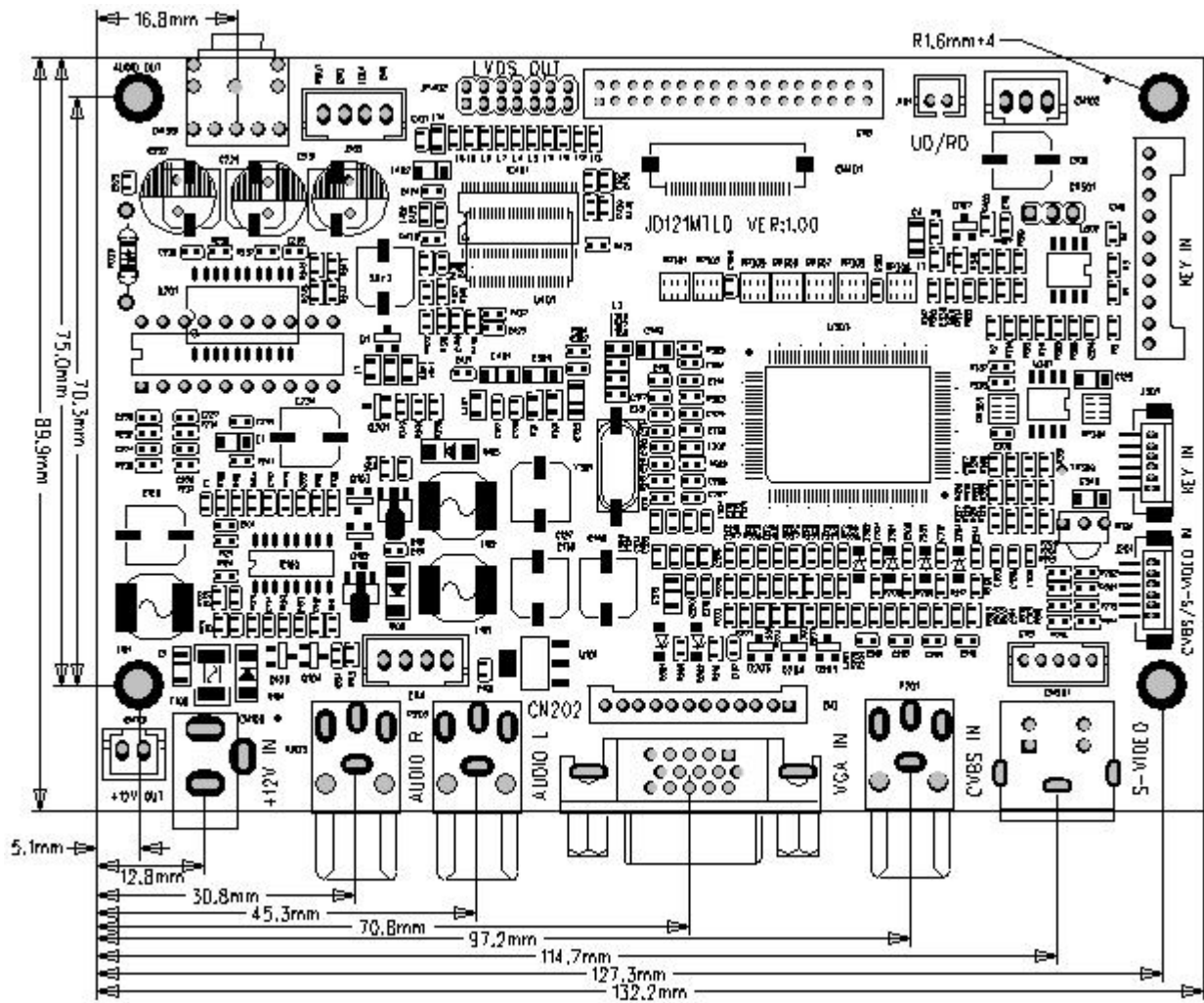
No	Symbol	I/O	Description	Comment
1	VDD	O	Power Supply	
2	VDD	O	Power Supply	
3	GND	-	Ground	
4	GND	-	Ground	
5	IN0-	O	LVDS receiver negative signal channel 0	
6	IN0+	O	LVDS receiver positive signal channel 0	
7	IN1-	O	LVDS receiver negative signal channel 1	
8	IN1+	O	LVDS receiver positive signal channel 1	
9	IN2-	O	LVDS receiver negative signal channel 2	
10	IN2+	OI	LVDS receiver positive signal channel 2	
11	CLK-	O	LVDS receiver negative signal clock	
12	CLK+	O	LVDS receiver positive signal clock	
13	NC			
14	NC			

7. Structural diagram

7.1 LCD panel :



7.2 PCB diagram :



8. 10.4" TFT- LCD PANEL Inspection standard:

Aim : Establishing the standard of PANLE for inspecting material & progress and for clients' inspection.

Scope : Apply to 10.4"TFT LCD

Content :

8.1. Determinant standard and method :

8.1.1. The method and determinant of inspecting the nick of panel of LCD :

8.1.1.1. Inspect vertically (or at 45°angle from left/right)under the light tube (the power is 20 W) in the distance of 30cm to the panel. If there is no nick , it determines "OK". Otherwise "NG".

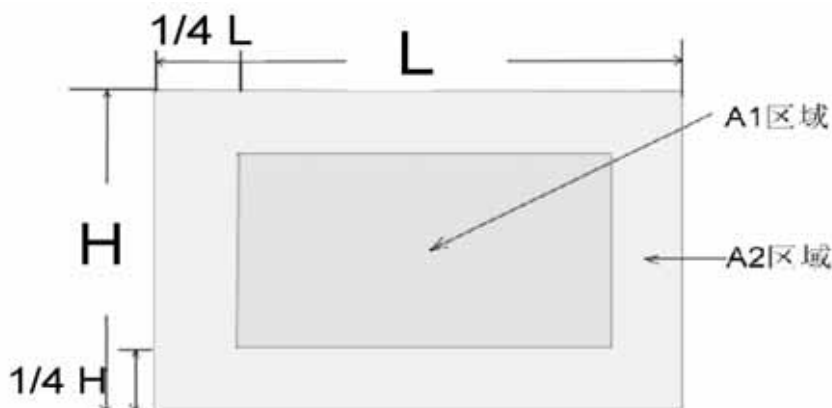
8.1.2. The method and determinative for black & white & color spots for the Panel of LCD :

8.1.2.1. Inspecting method

8.1.2.1.1. Black spots : under status of denote light , set the MASK of black spot inspection near the black spot then compare the big and small by eyes.

8.1.2.1.2. White & Color spots: under status of denote light, set the Mask of black spot inspection on the white spot(or color spot) then inspect them by eyes if it can hide.

8.1.2.2. Division of LCD Panel:



Remark : Area of A1 : The center of the available area for the picture

Area of A2 : The edge of the available area for the picture (around the

central area)

8.1.3. Determinant Choice

Spot Diameter (mm)		Allowed Area	
		A1	A2
Black Spot	d ≤ 0.15	Irrespective	Irrespective
	0.15 < d ≤ 0.3	4	4
	0.3 < d ≤ 0.5	2	3
	0.5 < d < 0.8	0	2
White or color spot	d ≤ 0.15	Irrespective	Irrespective
	0.15 < d ≤ 0.3	3	3
	0.3 < d ≤ 0.5	1	2
	0.3 < d < 0.8	0	1

Remark: 1. Size: Average Diameter= (Max. Diameter + Min. Diameter) /2

2. Using information above as a standard in order to judge while the spot are dense.

3. Black & White spot : To judge the obvious spots through the change of voltage by comparison.

4. Total quantity of Black & white & color spot: $A1+A2 \leq 4$.

9. Packing

TBD

10. Precaution:

- 1、 The voltage of supply power don't exceed maximum limit.
2. The connector can't connect board in reverse, or the board will be burnt and the products can't function well.
3. Please don't touch it in order to keep your skin non-burn when you electrify the board (there is High voltage on the board).
4. 10.4" TFT LCD Panel, it is a electric product, so you need to take anti-static measure when you operate it.
5. 10.4" TFT- LCD Panel is a glasswork, place carefully, broken for fear.
6. The connection if "FPC", which connect 10.4" Panel to PCBA, Please operate it carefully in order to keep it well.
7. Don't touch the pin of "variable resistor" when you adjust "VR".