

WARRANTY CARD

1. KH Trading machines and tools are covered by 6/24 months warranty, starting on the date of purchase, as described in the Civil Code (proof of purchase or invoice receipt must be enclosed with the warranty card when making a claim).
2. This warranty does not cover defects caused by unprofessional handling, machine overloads, not complying with instructions contained in this manual, using accessories that are not approved, unauthorized repair, regular wear and tear and damages occurred during transport. Further, this warranty does not cover parts and accessories such as the motor, carbon brushes, seals and hot-air operated parts and parts that need to be changed regularly.
3. If the repair is to be found as not covered by the warranty policy, all costs including the repair and shipping to and from the repair centre will be paid by the customer, according to valid price list. See www.
4. When making a claim, you must present the warranty card, showing the date of the purchase, the serial number of the machine, vendor stamp and signature of sales clerk, as well as the proof of purchase receipt.
5. Warranty claim shall be made at the vendor shop where you bought your machine or you may mail it to a service centre. The vendor is obligated to fill out the warranty card (date of sale, serial number, vendor stamp and signature). All these information must be filled in at the time of sale.
6. The warranty period will be extended for the period of time for which the machine has been in the service centre possession. If the repair or defect is not covered by the warranty policy, all costs including the repair and shipping will be paid by the owner of the machine / tool. We recommend sending the machine in its original packaging. Please, also enclose brief description of the defect with the packaging.
7. Before sending the machine for repair, clean it thoroughly. If the received machine is dirty, it may be rejected by the service shop or you may be charged a cleaning fee.

SERVICE

Logistic centre Klecany

Topolová 483

250 67 Klecany

Czech Republic

Claim department phone number: 266 190 156

266 190 111

Fax:

260 190 100

T-mobile: 603 414 975

O2: 601 218 255

Vodafone: 608 227 255

<http://www.KHnet.cz>

Email: servis@KHnet.cz

Product: ALL PURPOSE LASER POINTER LM 63DC	
Type: Im63DC	Serial number (product series):
Date of manufacture:	Repair centre notes:
Date of sale, stamp, signature:	

Without the correctly filled warranty card or without proof of purchase receipt, including the product type (invoice, purchase receipt) no warranty claim will be processed.

uni-max

USER'S MANUAL

ALL PURPOSE LASER POINTER LM 63DC



Im63DC

Dear customer. Thank you for purchasing equipment from KH Trading, s.r.o.
 Our company is ready to offer you our services - before, during and after you buy our product.
 If you have any question, comment or idea, please contact our business centre. We will do our best to address your comment or question in timely matter.

Before first use, please read this manual carefully. It is your responsibility to study all instructions, necessary for safe use and operation and to understand all risks that may be involved during the use of power machines.

WARNING! Do not try to use this machine before reading this entire manual and before you know how to handle it. Keep this manual for future reference.

Pay special attention to safety instructions. Not complying with safety rules may cause injury to the operating person or to people standing by or it may cause damage to the machine or to the work piece. Pay special attention to safety notes and safety labels on the machine.

Never remove or damage them.

Please, write information such as the invoice number and the number of the sale receipt here in this box.

DESCRIPTION

This device has been designed to determine precise positions during various assembly and manufacturing procedures. It may be used during woodworking, metal machining and other various manufacturing operations. Laser light can be easily fixed in place using screws or built-in magnets. The laser light is equipped flexible joint that enables you to aim the light where needed.

TECHNICAL SPECIFICATIONS

Voltage	= 4.5 V
Power source - 3 batteries	3 × LR44
Output	< 1 mW
Laser category	.II.
Wave length	.650 nm
Operational temperature	-.10 - + 45°C
Laser beam width	.4 mm / 3 m
Output beam angle	.45°
Shape of beam	.right angle cross
Head turning angle	.360°
Head diameter	.17 mm
Head length	.68 mm
Head height	.53 mm
Gross weight	.0.08 kg
Net weight	.0.05 kg

The accuracy of instructions, graphs and information contained herein, depends on the printing date. Due to continuous product improvement, the manufacturer reserves the right to change technical parameters of the product, without prior customer notification.

DISPOSAL

When the operational life of your device is over, dispose off it in accordance with valid rules and regulations. Your product is made of metal and plastic parts that may be recycled when separated.

1. Disassemble all parts.
2. Separate all parts according to the material they are made of (e.g. metals, rubber, plastics, etc.). Take the separated parts to the recycling facility near you.
3. Electrical waste (used electrical power tools, electric motors, recharging equipment, electronics, accumulators, batteries etc.).

Dear customer. In accordance with the valid regional rules and regulations describing the management of electrical waste, electrical waste is considered dangerous.

Disposal of electrical waste must be therefore handled as dangerous waste in accordance with waste management rules valid in the state you are in.

It is prohibited to mix electrical waste with regular household waste.

You may return your used electrical appliance to a recycling facility near you. More information about electrical and dangerous waste disposal may be obtained from your local authority or from the Internet.

CAUTION

If the machine breaks down, send it back to the vendor for quick repair.

Please, enclose brief description of the defect. That makes repair easier. If the machine is still covered by warranty, enclose the warranty card and proof of purchase receipt. After the warranty period expires, we repair your machine for a special price.

To prevent possible damages during shipping, packed the machine carefully or use the original packaging material. We are not liable for shipping damages due to incorrect packaging of your machine. If making a claim at the shipping company the level and method of packaging plays a major role during claim evaluation process.

Note: Pictures and contents in this manual may slightly differ from the actual product or accessories. It is due to continuous improvement of our products. Such small differences have no effect on the product functionality.

OPERATION

Never try to look directly into the laser beam!

Use for your device:

- Laser pointer may be used as an optical ruler when you need to determine cutting line or plane (wheel saw blade machines).
- Or it may be used as a pointer to easily distribute various objects around defined area (pictures, windows, tiles etc.).
- Or as position indicator

Switching your device on.

- Right after you switch your machine on, the pointer starts emit laser beam.
- Before switching the device on, make sure that is pointing at the desired direction to prevent eye damage.
- Set the stand to required position and aim the laser at the desired direction.
- Press the red button on the rear side of the laser pointer (the button remains depressed) to switch you device on.

Switching your device off.

- Press the red button again and it will pop out. The device is now switched off.

Setting the orientation of the laser cross

- You may set the position of the laser cross by turning the end part of the pointer. Hold the pointer with one hand and turn the end piece with other hand.

MAINTENANCE

Cleaning the laser lens

- Make sure no dust or humidity may get in contact with the lens.
- If you have to clean the lens, use only very soft and clean cloth or cotton-wool pad.

- Keep your machine/tools clean. Dirt from tools may enter the inner machine mechanism and cause damages to the tools or machine.
- Do not use aggressive cleaning solution or paint thinners to clean your tool/machine.
- Clean plastic parts with soft cloth dipped in soapy water.



Detailed description of the use of this device is not included in this manual, because the manufacturer / distributor assumes that the user is experienced in similar type of work. Also according to the applicable law, this device is considered as a commonly sold and used tool. If the user is unfamiliar with the use of this device, we recommend finding out more information about using this device at the Department of work safety.

SAFETY PRECAUTIONS

- **This device may be used by a qualified person, 18 years or older who has been trained in work and environmental safety procedures.**
- **Any person using this equipment must possess a medical certificate demonstrating his eligibility to operate this equipment.**

We recommend placing warning labels on conspicuous places around your workplace:

- **"Prevent most common injuries" - LASER PRODUCTS**

Symbols used in this manual



Warning!

This symbol informs you about the risk of personal injury or damage to the machine or materials.



Warning!

Danger of damage.



Note:

Additional information.



Laser product. Risk of eye injuries



General instructions

- Plastic bags and packaging materials pose danger for small children and animals.
- Make sure you know your tool or machine and you are familiar with its operating procedure. Know the hazards if not used correctly.
- Person using this machine must be properly trained and must know how to safely operate this equipment. He must be also aware of the hazards and risks that may occur if not used correctly.
- Pay special attention to safety notes and safety labels. Do not remove or damage them. If the warning label becomes unreadable or damaged please, contact your vendor.
- Maintain your working area clean. Disorganized and dirty working area may cause accidents.
- Never work in tight spaces or in purely lit rooms. Make sure the floor is solid and stable and that you can move around easily. Maintain stable posture during work.
- Stay focused and use all your senses. Pay attention to the working procedure. Do not continue to work if you cannot pay attention.
- Maintain your tools clean.
- Handles must be kept free of grease and dirt.
- Make sure no children, unauthorized persons or animals have access to your workshop.

- Never leave your machine unattended during operation.
- Use only for purposes for which it has been designed.
- Do not underestimate your abilities and know your limits. Use both hands.
- Never work under the influence of alcohol or other drugs.
- Do not use the machine/tool if you feel dizzy or weak.
- Any modifications or improvements to the machine are strictly prohibited. DO NOT USE if you discover bent part, crack or other damage.
- Never perform any maintenance during operation.
- If you see any unusual sign or hear any strange sound, switch off your machine and stop working immediately.
- Before use, make sure all screws are tighten securely.
- Perform maintenance regularly. Before use make sure the device is in good working conditions and without any damage.
- Use only original spare parts during repairs.
- Using extension pieces or accessories not approved by the manufacturer may cause injuries to the operating personnel.
- Do not expose to extremely high temperature or direct sunlight.
- This machine is not design for use in humid environments or under water.
- if you are not using your machine, store it in a dry and safe place, out of reach of children.
- If not stated otherwise in this manual, all damaged parts must be repaired or changed.



Laser product

- Laser product class II. (EN60825-1: 1997).
- Due to safety reasons it is strictly prohibited to look directly into the laser beam with bare eyes or using any optical apparatus or lens.
- Do not aim the laser light at persons or animals. Risk of eye injuries
- Do not touch the laser lens.
- Laser pointer is not a toy!



Fine mechanics

- Never use vise to hold your tool/machine.
- Protect you device from impact and fall.



Assembly

- Do not use the machine unless completely assembled.



Battery powered equipment

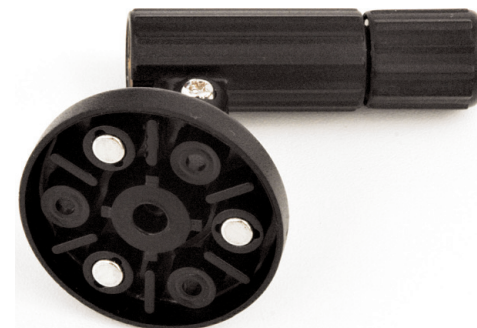
- If you are not using your device for long time, remove batteries out. Danger of damages due to electrolyte spillage.

ASSEMBLY

- Before throwing the packaging material out, make sure no part is left inside. If so, take it out and install it. Use the part listing for check-up and the installation drawing for guidance.

Installation and mounting - option number 1

- You may use 3 permanent magnets to secure the laser light in place. Use only for flat metal surfaces.



Installation and mounting - option number 2

- Using 3 screws or self-adhesive tape. Make sure the pointer is positioned above the work piece surface.
- Set the position of the pointer so the laser beam is aimed at the desired place/spot on the work piece.
- Switch the pointer on and make sure that the laser cross appears where intended.
- If necessary, correct its position so the beam is aimed at the desired spot on the work piece.

Battery installation

- Before changing the batteries, always make sure that the main switch is in the off position (red button in the released position).
- Unscrew the brass battery cover as seen on the picture.
- Place the batteries inside the compartment. Observe the polarity (-).
- Screw the battery cover back on.

