

Screen Creation Software for the GT Series

Terminal GTWIN

Installation Guide

Safety Precautions

Read and understand this specifications, instruction manual, installation manual and catalog to make proper use of the product.

WARNING

If critical situations that could lead to user's death or serious injury is assumed by mishandling of the product:

- Do not play the accompanying disk on an audio CD player or speakers of a personal computer. It could lead to the injury of your ears or the damage to the speakers due to megavolume.

TRADEMARKS and COPYRIGHT

- You may use this software in accordance with the "Licensing terms for the software".
- This manual and its contents are copyrighted.
- You may not copy this manual, in whole or part, without written consent of Panasonic Electric Works SUNX Co., Ltd.
- Windows and Windows NT are registered trademarks of Microsoft Corporation in the United States and/or other countries.
- Ethernet is registered trademarks of Fuji Xerox Co., Ltd. and Xerox Corp. in the United States.
- SDHC logo and SD logo are trademarks.
- All other company names and product names are trademarks or registered trademarks of their respective owners.
- Panasonic Electric Works SUNX Co., Ltd. pursues a policy of continuous improvement of the design and performance of its products, therefore, we reserve the right to change the manual/product without notice.

Table of Contents

- 1.1 Preparation..... 2**
 - 1.1.1 Package Contents..... 2
 - 1.1.2 Items You Need to Prepare 3

- 1.2 Manuals to be Used..... 4**

- 1.3 About Windows®..... 5**
 - 1.3.1 Usage Environment 5
 - 1.3.2 Precautions when using Windows Vista® and Windows®7..... 6

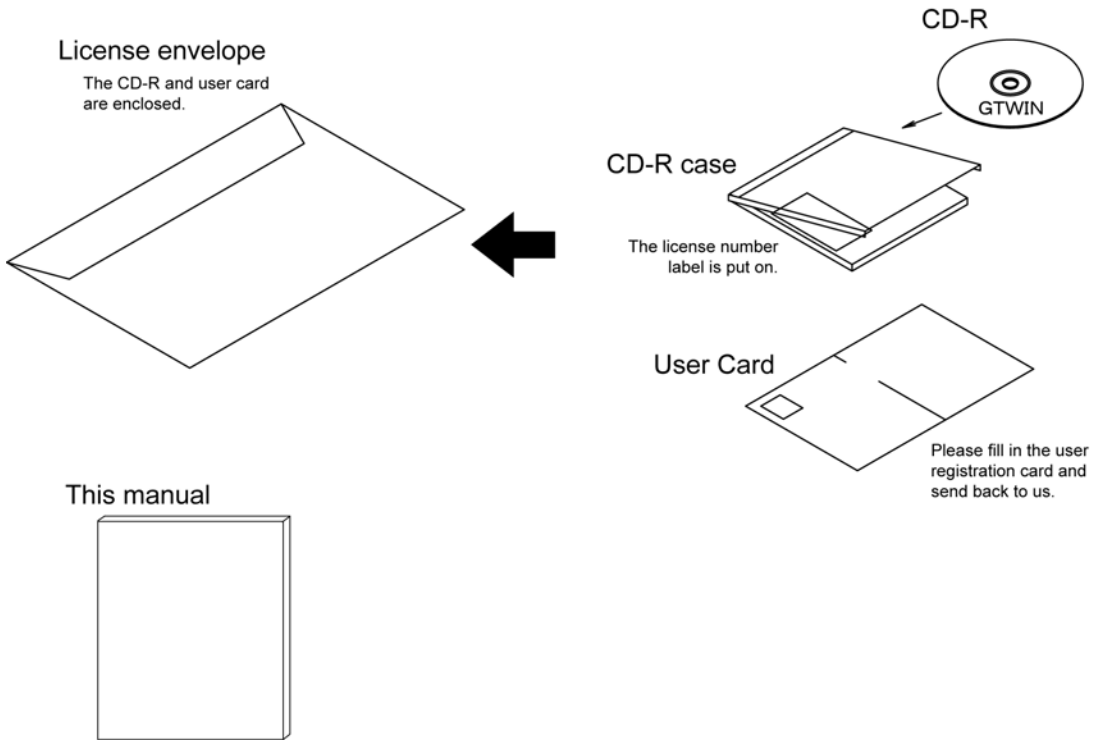
- 1.4 Installing GTWIN..... 7**

- 1.5 Installing USB Driver 12**
 - 1.5.1 When installing on Windows Vista®, XP, 2000 12
 - 1.5.2 When installing on Windows®7 15
 - 1.5.3 Setting for Transferring Screens..... 18

1.1 Preparation

1.1.1 Package Contents

The following items are supplied with this manual for Terminal GTWIN.



Key Point: User card

Please tear along the perforation line, and fill in and send back "User Registration Card" to us. As the license number is written on the other "Customer Copy", keep it in a safe place.

1.1.2 Items You Need to Prepare



The following parts are not supplied with GTWIN. Please purchase them separately according to your application.

Screen transfer cable

This cable is required to transfer data from the PC which GTWIN has been installed to GT.

GT02/ GT02L/GT05/GT12/GT32/GT32-E

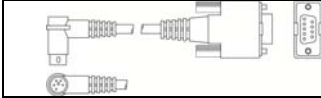

Between PC(USB) and Programmable Display

USB cable (Commercial product)	Applicable model	Cable type	Length
	GT05/GT32/ GT32-E	USB2.0 (or 1.1) AB type	Max. 5 m
	GT02/GT02L/GT12	USB2.0 (or 1.1) cable A type (Male): miniB type (Male)	Max. 5 m

Note) Windows®2000 or later OS is required for the communication with a USB.

GT01/GT11/GT21



Between PC (RS232C) and Programmable Display

D-sub connector cable	PC side connector	GT side connector	Description	Product No.
	D-sub 9-pin	Mini DIN round 5-pin	L type (3 m)	AFC8503
			Straight type (3 m)	AFC8503S

Note) A USB/RS232C conversion cable is necessary to connect with a personal computer without a serial port using a PC connection cable.

SD memory card (Commercial product)



It is used for the types equipped with the SD memory card slot.

Printed logo on GT	GT version (Ver.)					Usable SD memory card	
	GT02M2 GT02G2	GT05	GT12	GT32	GT32-E	Card type	Capacity
	1.00 or later	1.39 or older	1.09 or older	1.49 or older	1.00 or later	SD memory card	32M to 1GB
	1.00 or later	1.40 or later	1.10 or later	1.50 or later	1.00 or later	SD memory card SDHC memory card CLASS2 and 4	32M to 2GB 4GB to 16GB
	1.00 or later	1.39 or older	1.09 or older	1.49 or older	1.00 or later	SD memory card	32M to 1GB
	1.00 or later	1.40 or later	1.10 or later	1.50 or later	1.00 or later	SD memory card SDHC memory card	32M to 2GB 4GB to 32GB

Note) Select the capacity of a SD memory card according to the logo printed on the GT and the version of GT firmware.

Battery

It is required to use a SD memory card and back up data.

	Description		Product No.
	For GT11, GT21	1 pc	CR2032 (Commercial item)
	For GT02M2, GT02G2, GT05, GT12, GT32, GT32-E	1 pc	AFPX-BATT

1.2 Manuals to be Used

This manual describes only the installation of GTWIN. Please prepare the following manuals separately.

Request for manuals:



For brochures

Please contact your dealer. (Free of charge)

For PDF data

Please contact your dealer, or download the PDF data from our web site. (User registration is required. Free of charge)

Manual

	<p>GT series User's Manual</p> <p>Manual No. ARCT1F511E</p> <p>This manual describes the specifications, installation and connections of GT series.</p>
	<p>GT series Reference Manual</p> <p>Manual No. ACGM0357V**EN</p> <p>This manual describes the screen creation with GTWIN and settings of various functions of GT series.</p>

Note) The contents of the previous Technical Manual ARCT1F398E and GTWIN Operational Guide Book ACGM0357V**EN have been thoroughly revised and described in each manual.

Other manuals

- General-purpose Serial Communication Manual ARCT1F356E

This manual is necessary for communicating with the board developed by Panasonic or external devices such as a PC.

- Connection with other companies' PLCs Manual ARCT1F449E

This manual describes the connection methods with other companies' PLCs. The connection methods with our PLCs are described in GT series User's Manual.

- Parts Library ARCT1F453E

This manual consists of the parts lists used in GTWIN. It is available only in PDF.

- MODBUS(RTU mode) Slave Manual ARCT1F501E

This manual is necessary for using MODBUS (RTU mode) slave. It is available only in PDF.

1.3 About Windows®

1.3.1 Usage Environment

Confirm the environment you use.

Usable environment

OS	Windows® 7 Windows Vista® Windows® XP Windows® 2000
Required hard disk space	400MB or more
Recommended CPU	Intel® Pentium® III 600MHz or more
Recommended system RAM	128MB or more
Recommended display resolution	1240 x 768 or more
Recommended display colors	4096 colors or more



Note:

Windows (64-bit edition)

64-bit edition of Windows® is not supported.

To use HELP function

Microsoft Internet Explorer 4.0 or later should be installed to use the HELP function of GTWIN. If you do not have it, please download from Microsoft Web site.

Installation

The software should be installed by the account with administrator authority. If it is installed by other ways, it will not work properly. GTWIN can be used with administrator or power user authority after installation.

1.3.2 Precautions when using Windows Vista® and Windows®7

The file save location may differ from the other traditional windows® due to the operational specifications of Windows Vista®, Windows®7.

Note the followings for the use.

When more than one user uses GTWIN:

The files saved in the system folders such as "Program Files" cannot be shared.

For sharing the parts library or bitmap editor, use sharable folders or copy the files by each user and use.

File save location

If a file is saved in the system folder such as "Program Files", it will be saved in a different place from the specified folder. It is recommended to save files in other folders such as My Document.

* Screen data cannot be saved in the system folder such as "Program Files".

When a file has been saved in the system folders such as "Program Files":

This file is not displayed even if the folder where it has been saved is opened with Explorer.

Open the folder where the file has been saved and click the "Compatibility Files" button displayed at the top of the window to display the file.



Key Point: Operational specifications of Windows Vista® and Windows®7

On Windows Vista®, if the system folder such as "Program Files" is specified to save a file using an application software (such as GTWIN), the file will not be saved in the specified folder. It will be actually saved in the virtual folder (VirtualStore).

As the virtual folder (VirtualStore) is an individual folder for each logged in user, it cannot be shared with other logged in users.

1.4 Installing GTWIN

Procedure for installing GTWIN in a personal computer

Install GTWIN in a personal computer. The installation procedure is as follows.



Note: Check the usage environment of the PC before installation.

1. Exit any applications currently running.

If there are any applications currently running, exit them.

2. Set GTWIN_CD.

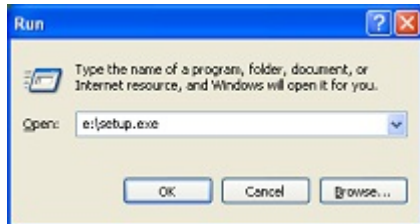
Insert the GTWIN_CD into the CD drive.

3. Select “Run”.



Click “Start” at the lower left of the screen, or press the Ctrl + ESC keys to display the menu. Select “Run”.

4. Enter the name of the file on which the function is to be run.

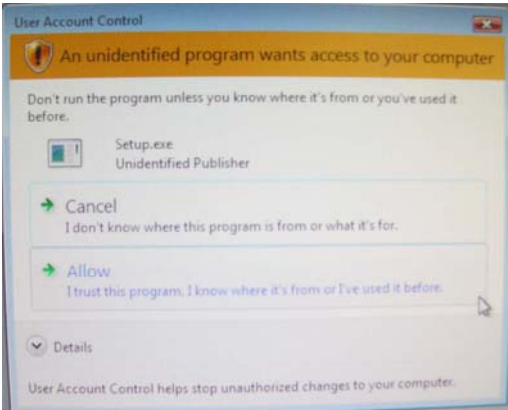


When “Run” is selected, the dialog box shown at the left is displayed. Enter:

e:\setup.exe
and click [OK].

Note) The drive in which the CD is set may be called by a name other than "e", depending on the computer configuration.

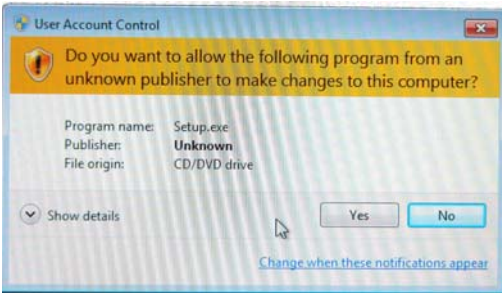
**For Windows Vista®/Windows®7
Windows Vista®**



After the step 4, "User Account Control" window is displayed.

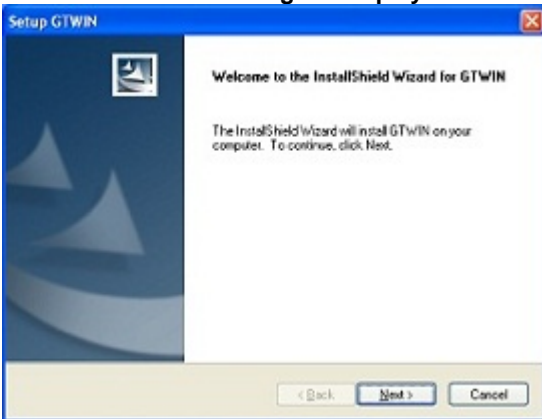
Windows Vista®: Click "Allow".

Windows®7



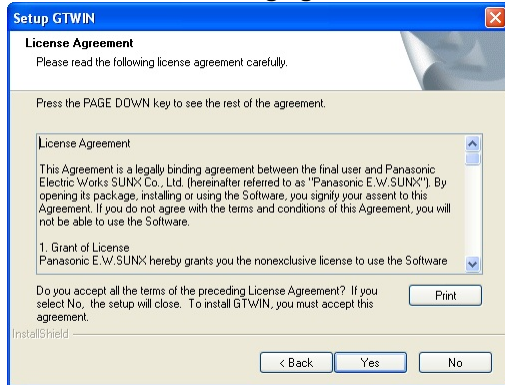
Windows®7: Click "Yes".

5. A confirmation message is displayed.



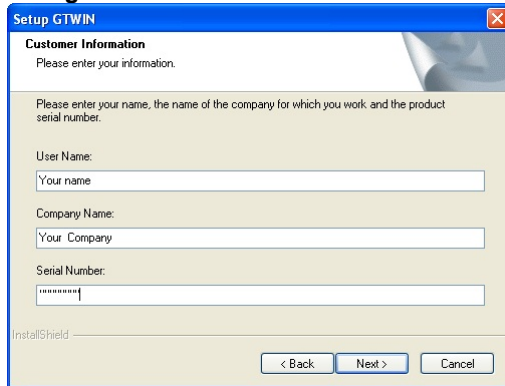
When the setup program is booted, a confirmation dialog box is displayed. Confirm the contents and click [Next]. To interrupt the installation, click [Cancel].

6. Confirm the licensing agreement.



The licensing agreement confirmation box is displayed. If you agree to all of the items in the displayed license agreement, click [Yes]. The setup process begins.

7. Register the user information.



A user information dialog box is displayed. Fill in the [User Name], [Company Name] and [Serial Number] items, and click [Next].

The serial number is noted on the user card included in GTWIN package. Make sure it is entered correctly.

Entering "User Name" and "Company Name" is optional.

Note) The contents entered here can be confirmed under "Version Information" on the splash screen, and in the Help function, when GTWIN is booted.



Note:

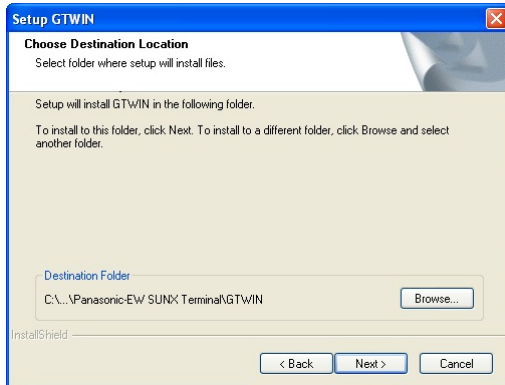
- Never eject the CD during the installation process.
- Make sure you keep a copy of the serial number in a safe place, for future reference.

8. Select language for GTWIN.



Select the menu and dialog language and click [Next].

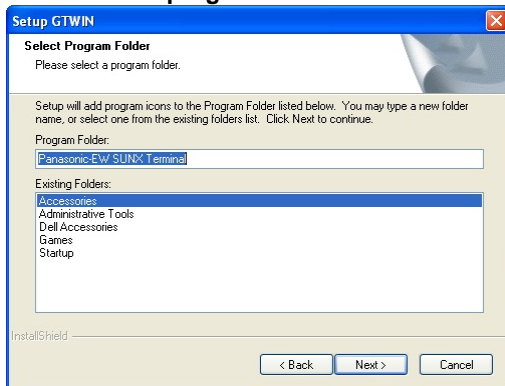
9. Select the installation destination.



A dialog box is displayed where the folder to which the Configurator PM is to be installed can be confirmed. To install the program in the displayed folder, click [Next].

Note) To install the program in a different folder, click [Browse] and specify a folder to change from "C:\Program Files\Panasonic-EW SUNX Terminal\GTWIN".

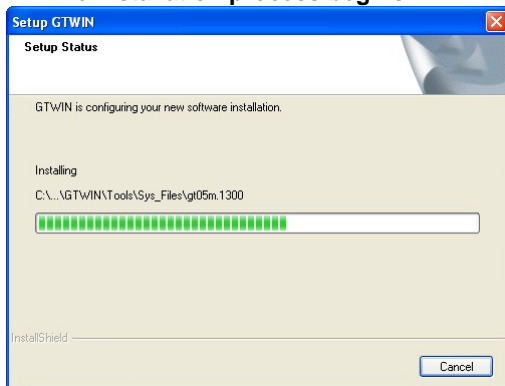
10. Select the program folder.



A dialog box is displayed where the program folder name can be confirmed. To use the displayed folder name, click [Next].

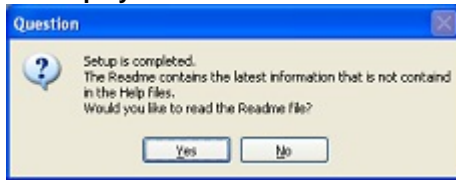
Note) To use a different folder name, change "Panasonic-EW SUNX Terminal".

11. The installation process begins.



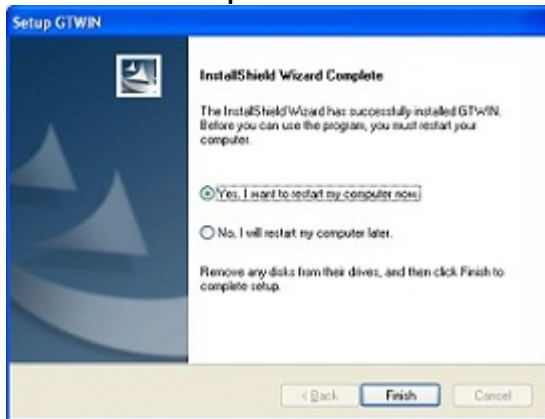
A message is displayed on the screen indicating that the installation is in progress, and GTWIN setup begins.

12. Display Readme file?



The Readme file contains the latest information. To display the Readme file, click [Yes].

13. Reboot the computer.



When all of the process has been completed, a dialog box is displayed, confirming that the computer will be rebooted.

Click [Finish].



Note:

To use GTWIN, the computer must first be rebooted. Make sure this is done before attempting to use the program.

1.5 Installing USB Driver

The USB driver must be installed to use a USB cable.
The following item is required for installing the USB driver.

About USB cable

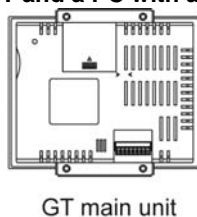
A commercial cable is necessary.

GT	Cable type	Length
GT05, GT32, GT32-E	USB2.0 (or 1.1) AB type	Max. 5 m
GT02, GT02L, GT12	USB2.0 (or 1.1) A: miniB type	Max. 5 m

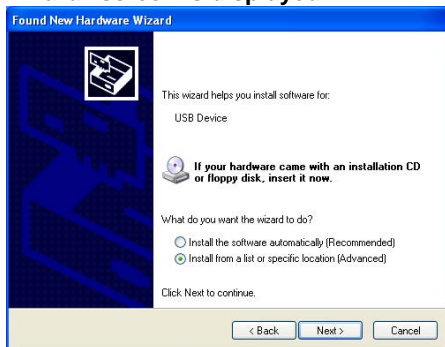
1.5.1 When installing on Windows Vista®, XP, 2000

The installation procedure is as follows.

1. Turn on the power supply of GT, and connect the GT and a PC with a USB cable.

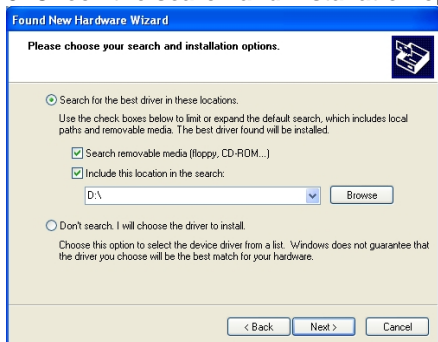


2. After the connection, the PC automatically detects the USB driver. The “Found new hardware wizard” screen is displayed.



Select “Install from a list or specific location (Advanced)”, and click [Next].

3. Check the search and installation options.



Select “Search for the best driver in these locations.” and “Include this location in the search” in this order, and click [Browse].

4. Specify the folder where the driver to be installed is saved.



Specify the following folder, and click [OK].

Folder to be specified:

\\Program Files\\Panasonic-EW SUNX Terminal
\\GTWIN\\GTWIN_USB

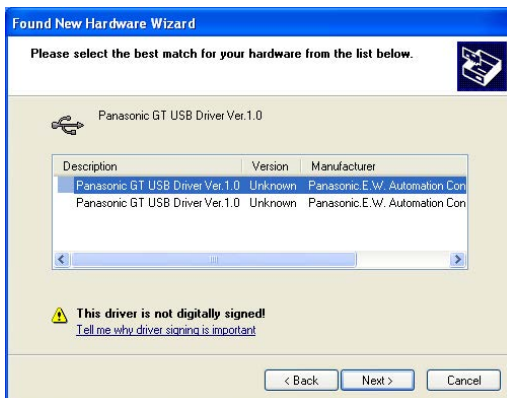
* If the driver is not in the above folder, specify the folder where the GTWIN has been installed.

5. Confirm the place to search the driver.



Confirm the specified folder, and click [Next].

6. If the window as below is displayed, select the driver to be installed.



If the PC has more than one USB port and a USB driver has been already installed, the display shown in the left column is displayed.

Select either driver, and click [Next].

* If the message "The file 'GTUSB.inf' on [Unknown] is needed" appears, click [Browse] and open the same folder specified in step 4.

7. The installation process begins.



A message is displayed on the screen indicating that the installation is in progress, and the installation of the USB driver begins.

8. Close the screen for the installation.



A message is displayed on the screen indicating that the installation completed. Click [Finish] to close the screen.

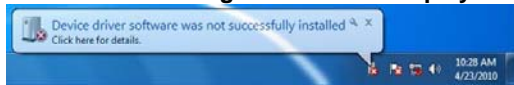
1.5.2 When installing on Windows®7

The installation procedure is as follows.

1. Turn on the power supply of GT, and connect the GT and a PC with a USB cable.

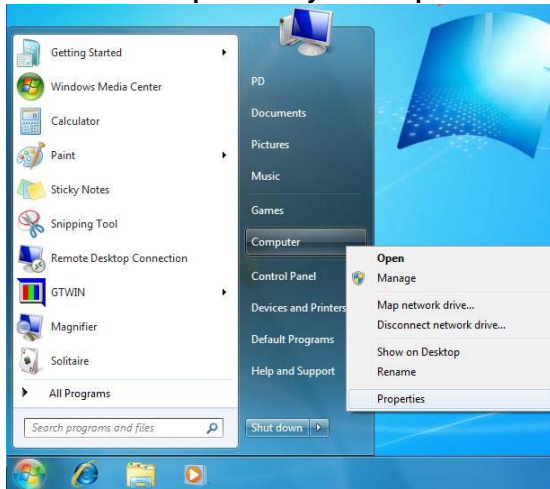


2. The error message as below is displayed at the bottom right of the screen after the connection.



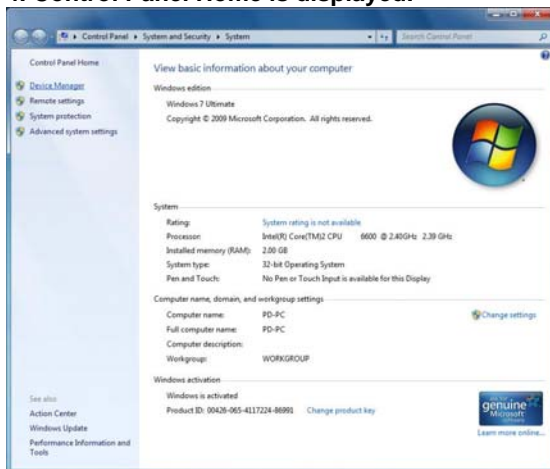
Continue the installation procedure.

3. Access to Properties of your computer.



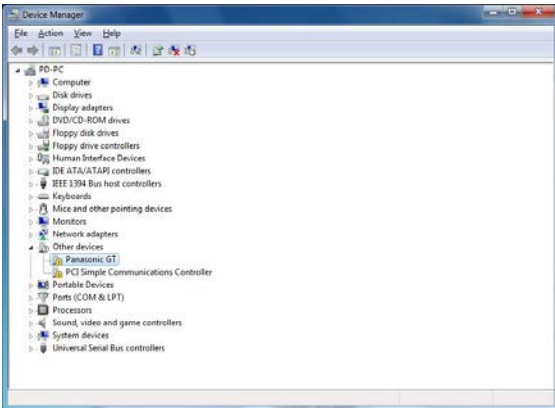
Click [Start], select [Computer] and right-click [Properties].

4. Control Panel Home is displayed.



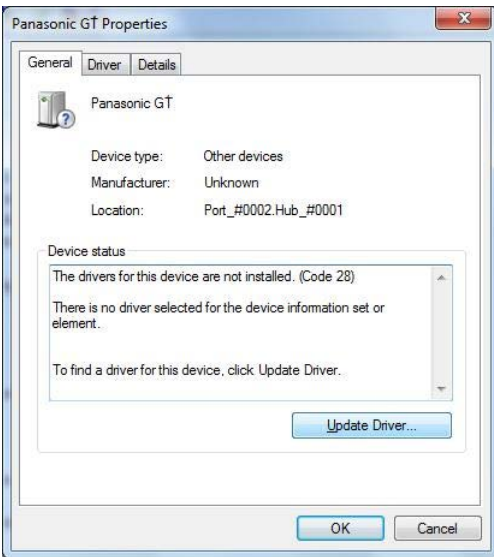
Click "Device Manager" in the upper left part of the window.

5. Device Manager is displayed.



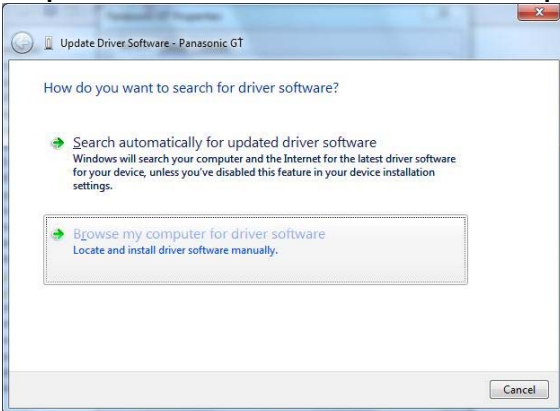
Click "Panasonic GT" under "Other devices".

6. Panasonic GT Properties is displayed.



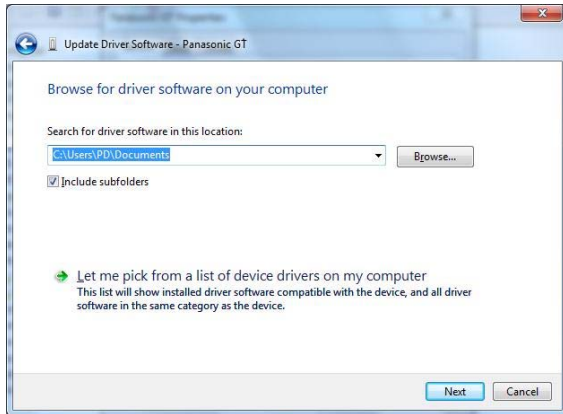
Click [Update Driver].

7. Update Driver Software - Panasonic GT is displayed.



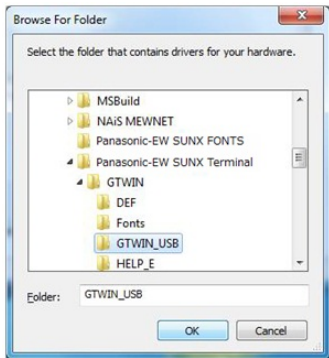
Select "Browse my computer for driver software".

8. Confirm the place to search the driver.



Click [Browse].

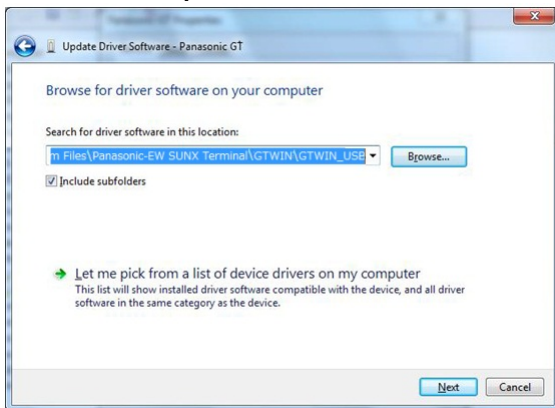
9. Specify the folder where the driver to be installed is saved.



Specify the following folder, and click [OK].
Folder to be specified:
\\Program Files\Panasonic-EW SUNX Terminal\GTWIN\GTWIN_USB

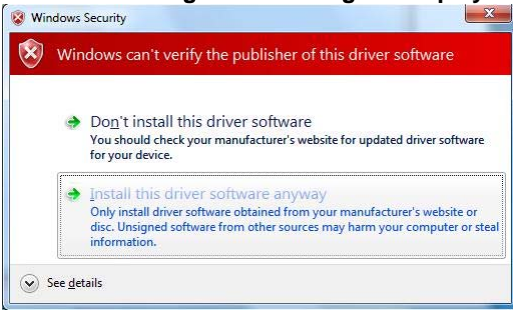
Note) If the driver is not in the above folder, specify the folder where the GTWIN has been installed.

10. Confirm the place to search the driver.



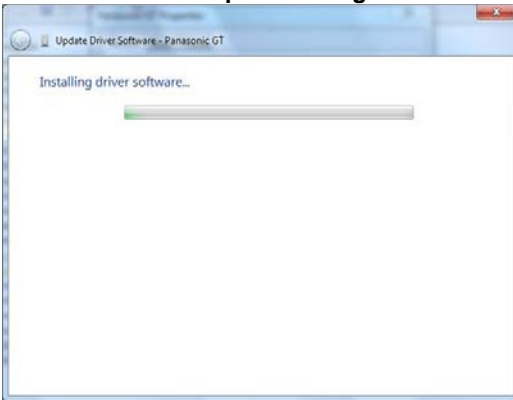
Confirm the specified folder, and click [Next].

11. The following error message is displayed.



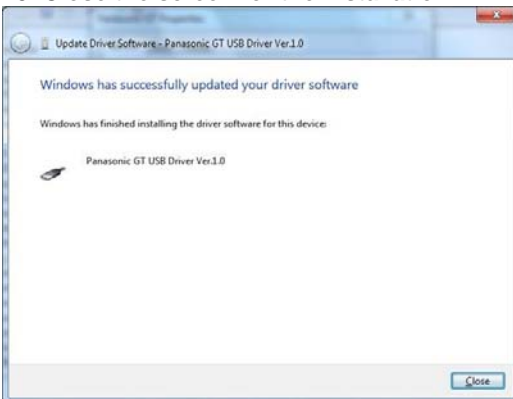
Click "Install this driver software anyway".

12. The installation process begins.



A message is displayed on the screen indicating that the installation is in progress, and the installation of the USB driver begins.

13. Close the screen for the installation.



A message is displayed on the screen indicating that the installation completed. Click [Close] to close the screen.

1.5.3 Setting for Transferring Screens

The setting is necessary for transferring screens with a USB cable.

"Communication Setting" dialog box



Select [File] → [Transfer] → [Condition] to open the communication setting dialog box.

Change "Network Type" to "USB", and click "OK".