

MK71050-03 Evaluation Kit

(MK71050-03USB-EK)

Hardware Manual

Initial Release (Official): June 11, 2015

Precautions for the Specification

- 1) Contents of the Specification are the information at the time of their issuance. The information contained herein is subject to change without notice.
- 2) LAPIS Semiconductor has used reasonable care in preparing the information included in the Specification, but LAPIS Semiconductor does not warrant that such information is error free. LAPIS Semiconductor assumes no liability whatsoever for any damages incurred by you resulting from errors in or omissions from the information included herein.
- 3) The technical information specified herein is intended only to show the typical functions of the Products and examples of application circuits for the Products. No license, expressly or implied, is granted hereby under any intellectual property rights or other rights of LAPIS Semiconductor or any third party with respect to the information contained in this document; therefore LAPIS Semiconductor shall have no responsibility whatsoever for any dispute, concerning such rights owned by third parties, arising out of the use of such technical information.
- 4) The Specification contains information related to the LAPIS Semiconductor's copyright and technical know-how. Any use of them other than pertaining to the usage of appropriate products is not permitted. Further, the Specification, in part or in whole, may not be reprinted or reproduced and disclosed to third parties without prior consent of LAPIS Semiconductor.

Precautions for the Products

●Precautions for Safety

- 1) The Products are designed and produced for application in ordinary electronic equipment (AV equipment, OA equipment, telecommunication equipment, home appliances, amusement equipment, etc.).
- 2) For use of our Products in applications requiring a high degree of reliability (as exemplified below), please contact and consult with a LAPIS Semiconductor representative: transportation equipment (i.e. cars, ships, trains), primary communication equipment, traffic lights, fire/crime prevention, safety equipment, medical systems, servers, solar cells, and power transmission systems.
- 3) Do not use our Products in applications requiring extremely high reliability, such as aerospace equipment, nuclear power control systems, and submarine repeaters.
- 4) The Products are designed for use in a standard environment and not in any special environments. Application of the Products in a special environment can deteriorate product performance. Accordingly, verification and confirmation of product performance, prior to use, is recommended if used under the following conditions:
 - [a] Use in various types of liquid, including water, oils, chemicals, and organic solvents
 - [b] Use outdoors where the Products are exposed to direct sunlight, or in dusty places
 - [c] Use in places where the Products are exposed to sea winds or corrosive gases, including Cl₂, H₂S, NH₃, SO₂, and NO₂
 - [d] Use in places where the Products are exposed to static electricity or electromagnetic waves
 - [e] Use in environment subject to strong vibration and impact.
 - [f] Use in proximity to heat-producing components, plastic cords, or other flammable items
 - [g] Use involving sealing or coating the Products with resin or other coating materials
 - [h] Use of the Products in places subject to dew condensation
- 5) The Products might receive the radio wave interference from electronic devices such as Wireless LAN devices, Bluetooth devices, digital cordless telephone, microwave oven and so on that radiate electromagnetic wave.
- 6) The Products are not radiation resistant.
- 7) Verification and confirmation of performance characteristics of Products, after on-board mounting, is advised.
- 8) Confirm that operation temperature is within the specified range described in the Specification.

- 9) Although LAPIS Semiconductor is continuously working to improve product reliability and quality, semiconductors can break down and malfunction due to various factors. Therefore, if product malfunctions may result in serious damage, including that to human life, sufficient fail-safe measures must be taken, including the following:
- [a] Installation of protection circuits or other protective devices to improve system safety
 - [b] Installation of redundant circuits in the case of single-circuit failure
- 10) Failure induced under deviant condition from what defined in the Specification can not be guaranteed.
- 11) This product is a specification to radiate the radio wave. It is necessary to acquire the attestation of decided Radio Law of each region used to use the equipment that radiates the radio wave.
Please inquire about the attestation of Radio Law that this product acquires.
- 12) When product safety related problems arises, please immediately inform to LAPIS Semiconductor, and consider technical counter measure.

● Precautions for Reference Circuits

- 1) If change is made to the constant of an external circuit, allow a sufficient margin due to variations of the characteristics of the Products and external components, including transient characteristics, as well as static characteristics.
- 2) The reference circuit examples, their constants, and other types of information contained herein are applicable only when the Products are used in accordance with standard methods. Therefore, if mass production is intended, sufficient consideration to external conditions must be made.

● Precaution for Electrostatic

This product is Electrostatic sensitive product, which may be damaged due to Electrostatic discharge. Please take proper caution during manufacturing and storing so that voltage exceeding Product maximum rating won't be applied to the Products. Please take special care under dry condition (Grounding of human body / equipment / solder iron, isolation from charged objects, setting of Ionizer, friction prevention and temperature / humidity control etc.)

● Precautions for Storage / Transportation

- 1) Product performance and connector mating may deteriorate if the Products are stored in the following places:
 - [a] Where the Products are exposed to sea winds or corrosive gases, including Cl₂, H₂S, NH₃, SO₂ and NO₂
 - [b] Where the temperature or humidity exceeds those recommended by LAPIS Semiconductor
Temperature: 5°C to 40°C, Humidity 40% to 60%
 - [c] Storage in direct sunshine or condensation.
 - [d] Storage in high Electrostatic.
- 2) Even under LAPIS Semiconductor recommended storage condition, connector mating, mountability, and heat resistance of products over 1 year old may be degraded.
- 3) Store / transport cartons in the correct direction, which is indicated on a carton as a symbol, otherwise bent leads may occur due to excessive stress applied when dropping of a carton.

● Precaution for Product Label

QR code printed on LAPIS Semiconductor product label is only for internal use, and please do not use at customer site. It might contain internal products information that is inconsistent with product information.

● Precaution for Disposition

When disposing Products, please dispose them properly with a industry waste company.

● Prohibition Regarding Intellectual Property

LAPIS Semiconductor prohibits the purchaser of the Products to exercise or use the intellectual property rights, industrial property rights, or any other rights that either belong to or are controlled by LAPIS Semiconductor, other than the right to use, sell, or dispose of the Products.

• The other precautions

- 1) Please use the Products in accordance with any applicable environmental laws and regulations, such as the RoHS Directive. For more details, including RoHS compatibility, please contact a ROHM sales office. LAPIS Semiconductor shall have no responsibility for any damages or losses resulting non-compliance with any applicable laws or regulations.
- 2) When providing our Products and technologies contained in the Specification to other countries, you must abide by the procedures and provisions stipulated in all applicable export laws and regulations, including without limitation the US Export Administration Regulations and the Foreign Exchange and Foreign Trade Act.

Copyright 2015 LAPIS Semiconductor Co., Ltd.

LAPIS Semiconductor Co.,Ltd.

2-4-8 Shinyokohama, Kouhoku-ku,
Yokohama 222-8575, Japan
<http://www.lapis-semi.com/en/>

Preface

This document outlines the hardware of MK71050-03 evaluation kit (MK71050-03USB-EK) which enables 2.4 GHz-band radio communication conforming to Bluetooth® LE on Windows PC via USB.

The following related documents are available for reference.

- MK71050-03 Data Sheet
- ML7105 Data Sheet
- ML7105 User's Manual
- Bluetooth Application Controller Interface (BACI) Command Manual

- BLE Evaluation Kit AT Command (VSSPP2 Edition) Reference Manual
- BLE TOOL User's Manual
- BLE Evaluation Kit Setting Utility (VSSPP2 AT Command Edition) Operation Manual

- Bluetooth® is a registered trademark of Bluetooth SIG, Inc.
- All other company and product names are the trademarks or registered trademarks of the respective companies.

Table of Contents

Preface	iv
Table of Contents	v
1. MK71050-03USB-EK Overview	1
2. Configuration	2
2.1 System Configuration	2
2.2 Configuration of MK71050-03 USB Dongle	3
3. User Interface	4
3.1 Connection of uEASE	4
4. Circuit Diagram	5
4.1 MK71050-03 Evaluation Module	5
4.2 USB Conversion Board	7
Revision History	8

1. MK71050-03USB-EK Overview

When you receive MK71050-03USB-EK, make sure that all of the following components are included in the kit. Should there be any missing or broken part, contact our sales representative.

Contents

Components	Quantity
MK71050-03 USB dongle - MK71050-03 evaluation module + USB conversion board	1
uEASE pitch conversion board	1

MK71050-03USB-EK configuration

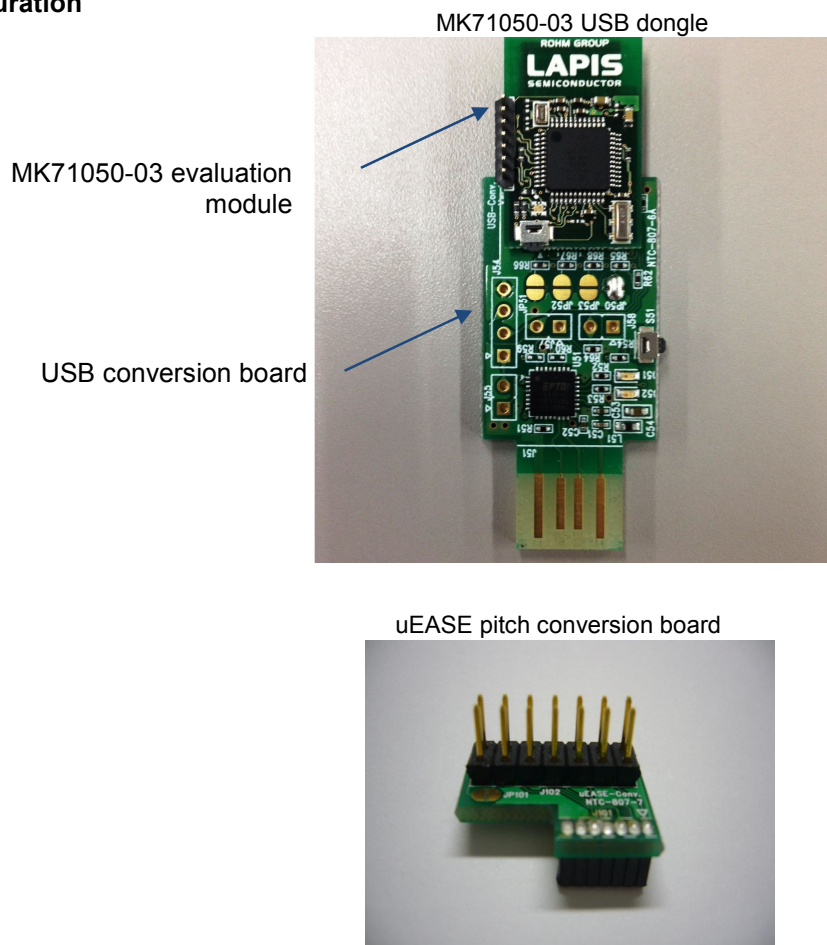


Figure 1-1 MK71050-03USB-EK

2. Configuration

2.1 System Configuration

MK71050-03 USB dongle can operate as Central (Master) or Peripheral (Slave) for the Bluetooth LE connection.

With the LAPIS VSSPP(*) software, it supports the following functions in addition to a simple communication between PCs.

- Master/slave switching
- Up to five pairings
- Communication with smartphones with Android 4.3 or later
- Connection to iPhone beacon application with iBeacon operation

The online shopping-only new GUI (PC) can easily change various parameters of BLE.

(*)VSSPP: Vender Specific Serial Port Profile

See the following related manuals for details.

- BLE Evaluation Kit AT Command (VSSPP2 Edition) Reference Manual
- BLE TOOL User's Manual
- BLE Evaluation Kit Setting Utility (VSSPP2 AT Command Edition) Operation Manual

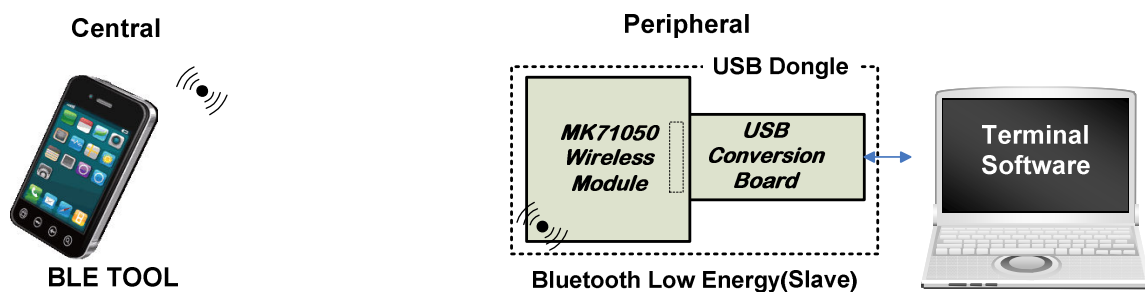


Figure 2-1 Example 1 of System Configuration with MK71050-03USB-EK

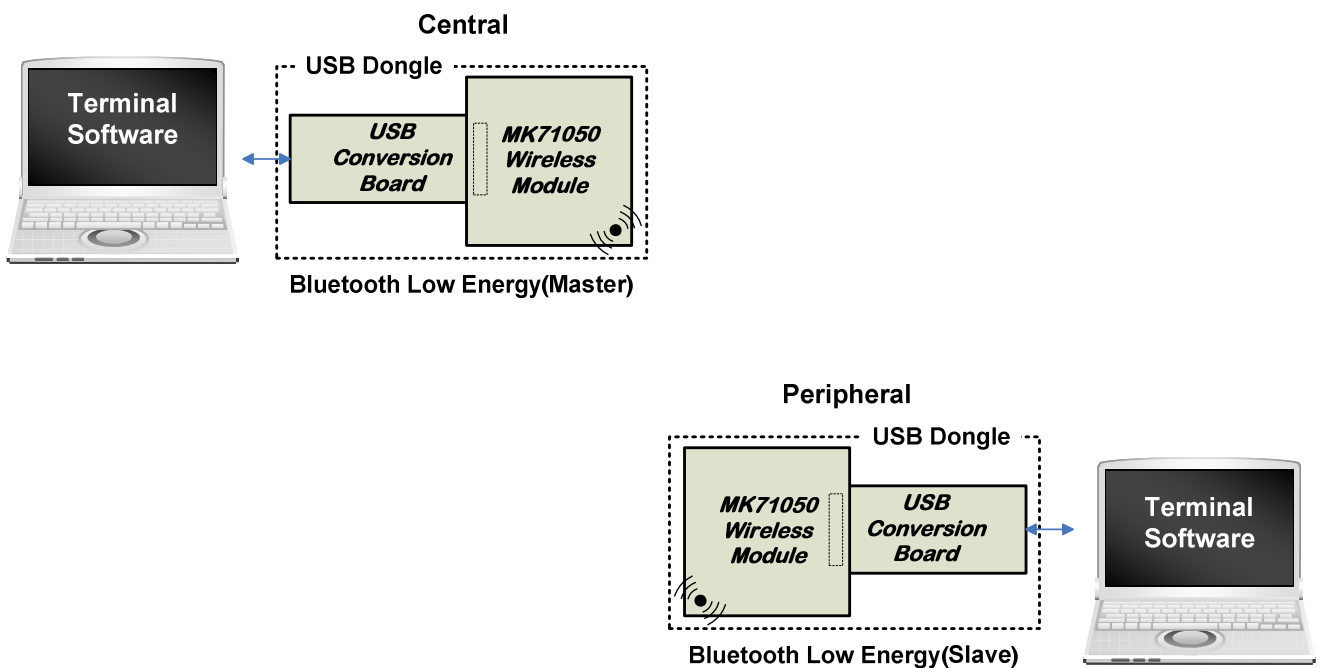


Figure 2-2 Example 2 of System Configuration with MK71050-03USB-EK

(Note) The configuration example 2 requires two kits of MK71050-03USB-EK.

2.2 Configuration of MK71050-03 USB Dongle

Figure 2-2 shows the appearance of MK71050-03 USB dongle, and Table 2-1 shows its configuration.

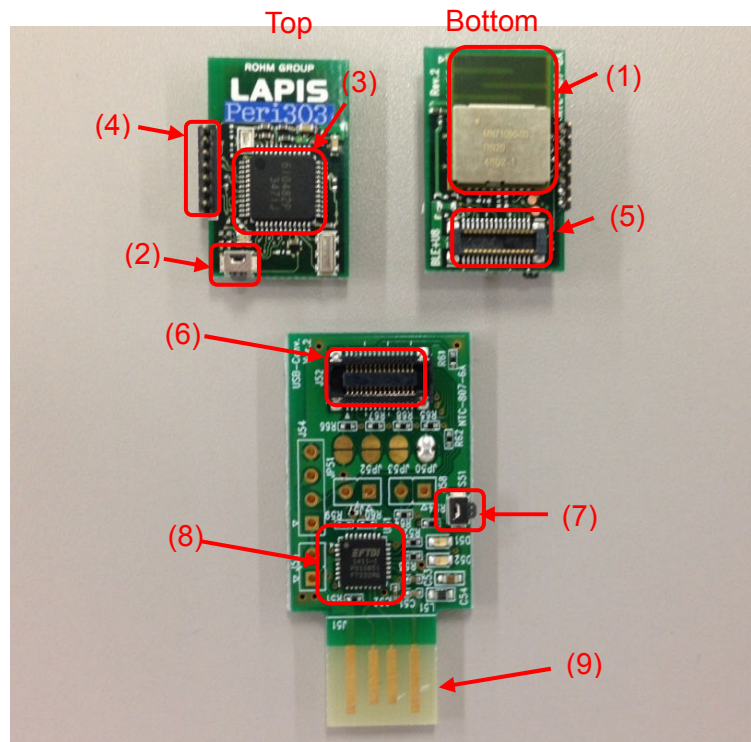


Figure 2-2 Appearance of MK71050-03 USB Dongle

Table 2-1 Configuration of MK71050-03 USB Dongle

No.	Name	Symbol	Description
MK71050-03 evaluation module			
(1)	MK71050-03	U1	Bluetooth LE radio communication module
(2)	B3U-3000P(M)	S1	MK71050-03 reset switch
(3)	ML610Q482	U2	U8 microcontroller
(4)	Half pitch pin header	J2	Connector port for uEASE pitch conversion board
(5)	55650-0388	J1	0.5 mm pitch BtoB connector (plug) by Molex
USB conversion board			
(6)	54363-0389	J52	0.5 mm pitch BtoB connector (receptacle) by Molex
(7)	B3U-3000P(M)-B	S51	Reset switch
(8)	FT232RQ	U51	USB-UART (USB serial conversion) IC by FTDI
(9)	USB connector	J51	PCB pattern for USB connector A

3. User Interface

3.1 Connection of uEASE

uEASE is an incircuit emulator (ICE) module for the U8 microcontroller ML610Q482 implemented on the MK71050-03 evaluation module. Connect the MK71050-03 evaluation module with uEASE as shown in the following figure. Because the pin pitch of the uEASE connector is different from that of the uEASE cable, the uEASE pitch conversion board is necessary.

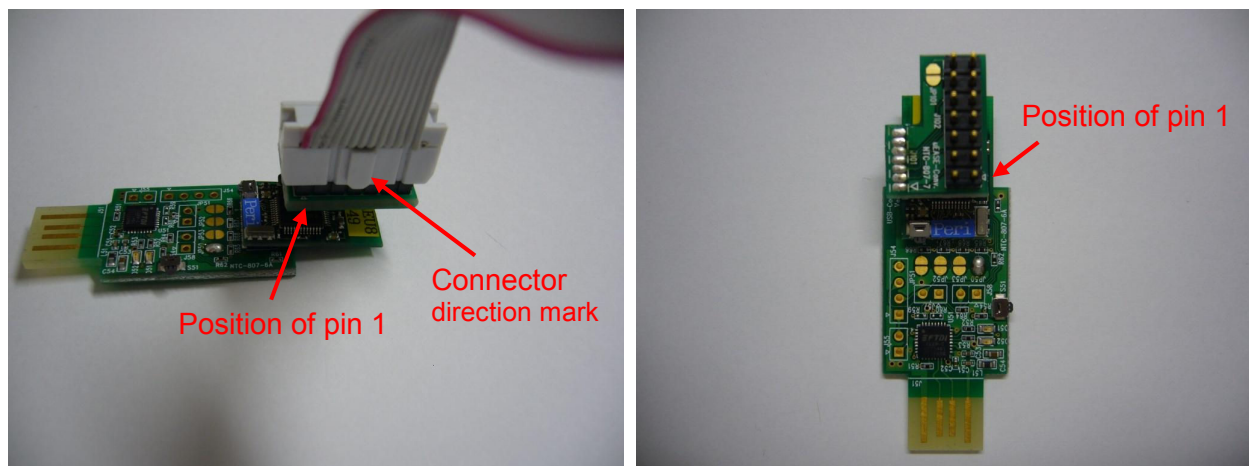
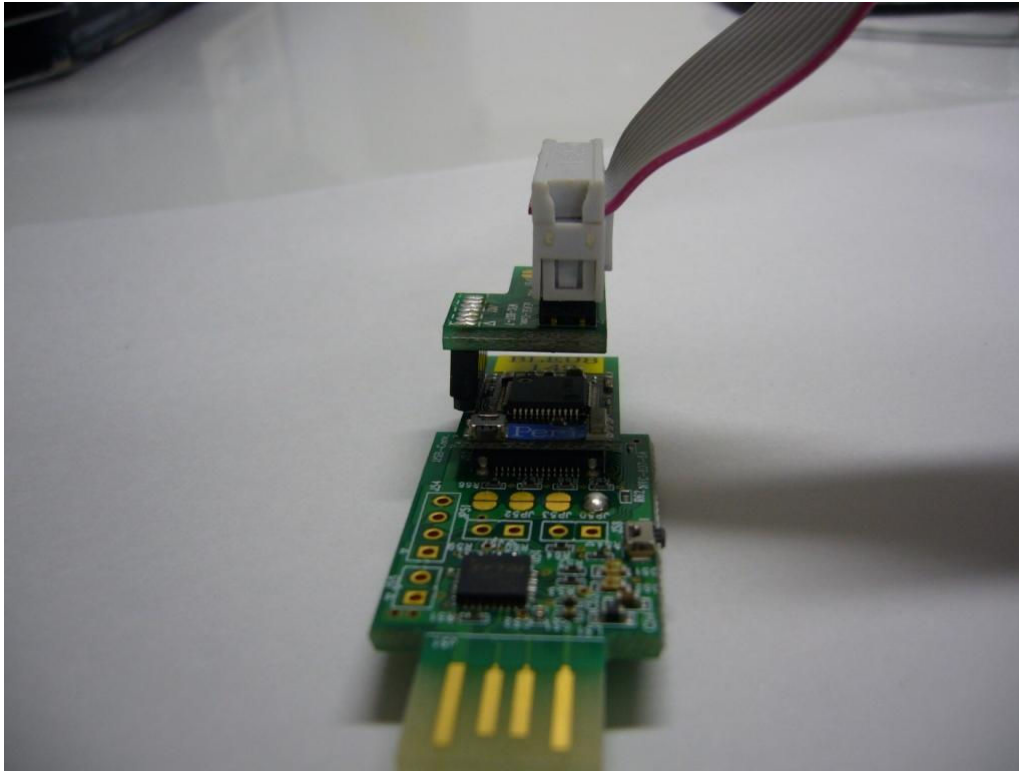


Figure 3-1 Connection of MK71050-03 Evaluation Module and uEASE

The uEASE module enables the following functions.

- Writing an application code to the flash memory included in ML610Q482 (*)
- On-chip debug function (reset, step run, break point, etc.)

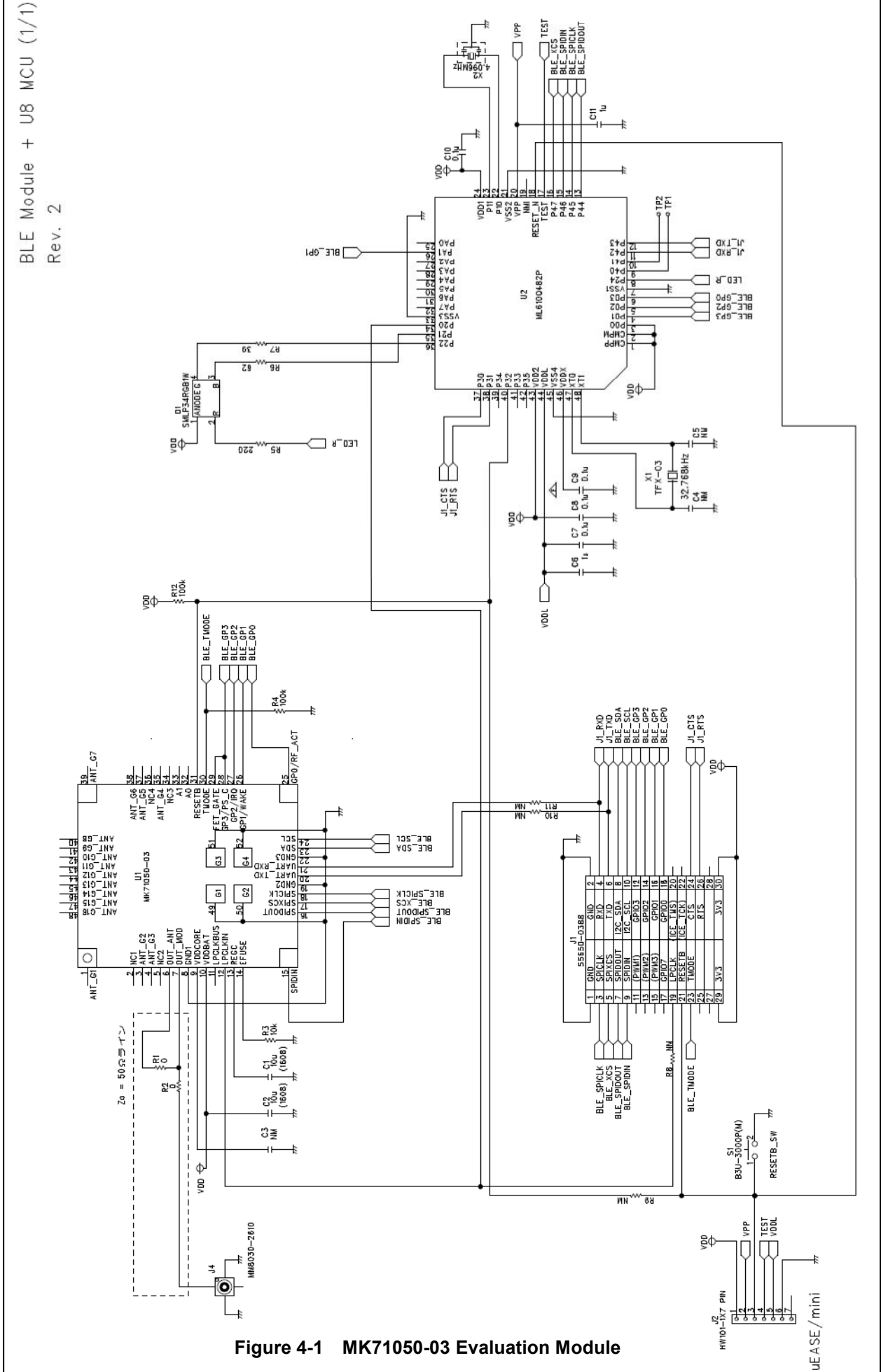
(*) A sample application for VSP software is written at shipment.

For details of the debug function, see the manuals of uEASE.

4. Circuit Diagram

4.1 MK71050-03 Evaluation Module

See the next page.



4.2 USB Conversion Board

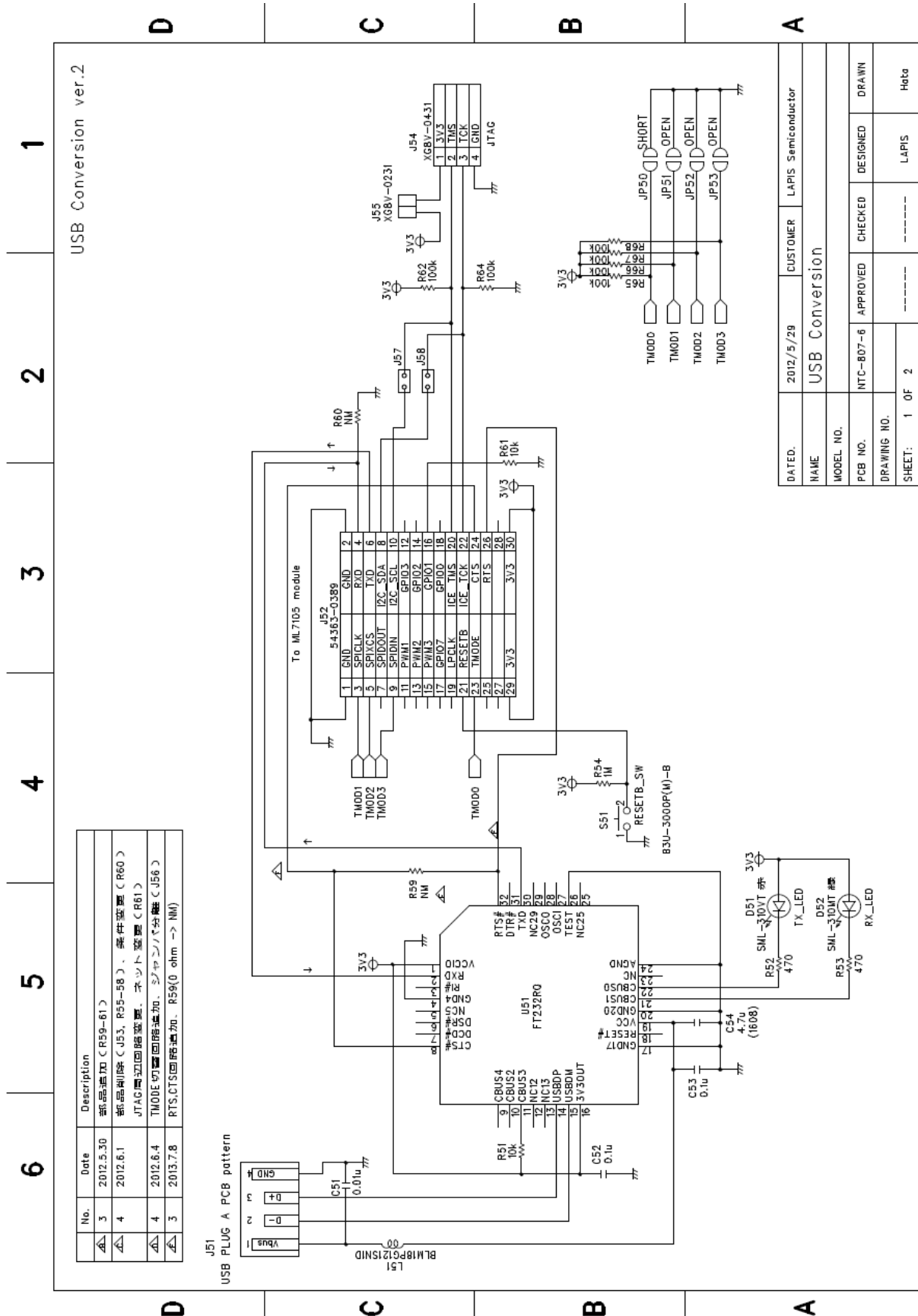


Figure 4-2 USB Conversion Board

Revision History

Document No.	Issue date	Page		Revision description
		Before revision	After revision	
FEXK71050-03_USB-E K_HardManual-01	June 11, 2015	-	-	Initial release (official)

(Note) Corrections of errors and change/correction of expressions are not included.