



Beacon

OEM Receiver User Manual

Version 1.0

Last Revised November 29, 2012

All contents in this manual are copyrighted by ArWest Communications.
All rights reserved. The information contained herein may not be used, accessed, copied, stored, displayed, sold, modified, published, or distributed, or otherwise reproduced without express written consent from ArWest Communications.

TABLE OF CONTENTS

Preface	5
Terms and Conditions.....	5
WEEE Directive	7
Technical Assistance	8
Return Material Authorization	8
Chapter 1. Product Features	9
1.1. Introduction	9
1.1.1. Media Access Control (MAC)	10
1.1.2. Management Tools	10
Chapter 2. General Description	11
2.1. Physical Interfaces.....	11
2.1.1. Serial Data Interface	11
2.1.2. Power Interface	11
2.1.3. Power Consumption	11
2.1.4. Antenna	12
Chapter 3. Command Line Interface	13
3.1. Command Line Interface Convention	14
3.1.1. Software Switching to Maintenance Mode	14
3.1.2. Hardware Switching to Maintenance Mode	15
3.1.3. Switching to Data Mode	15
3.2. Networking Commands	16
3.2.1. LINK	16
3.2.2. MAP	16
3.2.3. SCAN	17
3.2.4. ANTENNA	18
3.3. Serial Interfacing Commands	18
3.3.1. PORT.....	18
3.4. Special Commands	19
3.4.1. ALARM.....	19
3.4.2. BOOT	19
3.4.3. HELP.....	19

3.4.4. SAVE	20
3.4.5. SLEEP	20
3.5. Diagnostics and Identification Commands	21
3.5.1. INFO	21
3.5.2. STATE	22
Appendix A. Technical Specifications	23
A.1. Technical Specifications	23
A.1.1. Beacon Receiver Specification	23
A.1.2. General	23
A.1.3. Mechanical Properties For End-product	24
A.2. External Connectors	25
A.2.1. Antenna Connector	25
A.2.2. User Ports' Connector (Main connector J1)	25
Appendix B. Safety Warnings	27
B.1. General Warnings	27
Appendix C. Warranty Terms	29

PREFACE

Thank you for purchasing this product. The materials available in this Manual (the “Manual”) have been prepared by ArWest Communications (“ArWest Communications”) for owners of ArWest Communications products. It is designed to assist owners with the use of the Beacon OEM Receiver and its use is subject to these terms and conditions (the “Terms and Conditions”).

Note: Please read these Terms and Conditions carefully.

Terms and Conditions

COPYRIGHT – All information contained in this Manual is the intellectual property of, and copyrighted material of ArWest Communications. All rights are reserved. You may not use, access, copy, store, display, create derivative works of, sell, modify, publish, distribute, or allow any third party access to, any graphics, content, information or data in this Manual without ArWest Communications’ express written consent and may only use such information for the care and operation of your Beacon OEM Receiver. The information and data in this Manual are a valuable asset of ArWest Communications and are developed by the expenditure of considerable work, time and money, and are the result of original selection, coordination and arrangement by ArWest Communications.

TRADEMARKS – ArWest, ArWest Communications[®] are trademarks or registered trademarks of ArWest Communications. Windows[®] is a registered trademark of Microsoft Corporation. Product and company names mentioned herein may be trademarks of their respective owners.

DISCLAIMER OF WARRANTY – EXCEPT FOR ANY WARRANTIES IN THIS MANUAL OR A WARRANTY CARD ACCOMPANYING THE PRODUCT, THIS MANUAL AND THE Beacon OEM RECEIVER ARE PROVIDED “AS-IS.” THERE ARE NO OTHER WARRANTIES. ARWEST COMMUNICATIONS DISCLAIMS ANY IMPLIED WARRANTY OF MERCHANTABILITY OR FITNESS FOR ANY PARTICULAR USE OR PURPOSE. ARWEST COMMUNICATIONS AND ITS DISTRIBUTORS SHALL NOT BE LIABLE FOR TECHNICAL OR EDITORIAL ERRORS OR OMISSIONS CONTAINED HEREIN; NOR FOR INCIDENTAL OR CONSEQUENTIAL DAMAGES RESULTING FROM THE FURNISHING, PERFORMANCE OR USE OF THIS MATERIAL OR THE L-BAND/BEACON OEM RECEIVER. SUCH DISCLAIMED DAMAGES INCLUDE BUT ARE NOT LIMITED TO LOSS OF TIME, LOSS OR DESTRUCTION OF DATA, LOSS OF PROFIT, SAVINGS OR REVENUE, OR LOSS OF THE PRODUCT'S USE. IN ADDITION, ARWEST COMMUNICATIONS IS NOT RESPONSIBLE OR LIABLE FOR DAMAGES OR COSTS INCURRED IN CONNECTION WITH OBTAINING SUBSTITUTE PRODUCTS OR SOFTWARE, CLAIMS BY OTHERS, INCONVENIENCE, OR ANY OTHER COSTS. IN ANY EVENT, ARWEST COMMUNICATIONS SHALL HAVE NO LIABILITY FOR DAMAGES OR OTHERWISE TO YOU

Preface

Terms and Conditions

OR ANY OTHER PERSON OR ENTITY IN EXCESS OF THE PURCHASE PRICE FOR THE L-BAND/BEACON OEM RECEIVER.

LICENSE AGREEMENT – Use of any computer programs or software supplied by ArWest Communications or downloaded from a ArWest Communications website (the “Software”) in connection with the Beacon OEM Receiver constitutes acceptance of these Terms and Conditions in this Manual and an agreement to abide by these Terms and Conditions. The user is granted a personal, non-exclusive, non-transferable license to use such Software under the terms stated herein and in any case only with a single Beacon OEM Receiver or single computer. You may not assign or transfer the Software or this license without the express written consent of ArWest Communications. This license is effective until terminated. You may terminate the license at any time by destroying the Software and Manual. ArWest Communications may terminate the license if you fail to comply with any of the Terms or Conditions. You agree to destroy the Software and manual upon termination of your use of the Beacon OEM Receiver. All ownership, copyright and other intellectual property rights in and to the Software belong to ArWest Communications. If these license terms are not acceptable, return any unused software and manual.

CONFIDENTIALITY – This Manual, its contents and the Software (collectively, the “Confidential Information”) are the confidential and proprietary information of ArWest Communications. You agree to treat ArWest Communications' Confidential Information with a degree of care no less stringent than the degree of care you would use in safeguarding your own most valuable trade secrets. Nothing in this paragraph shall restrict you from disclosing Confidential Information to your employees as may be necessary or appropriate to operate or care for the Beacon OEM Receiver. Such employees must also keep the Confidentiality Information confidential. In the event you become legally compelled to disclose any of the Confidential Information, you shall give ArWest Communications immediate notice so that it may seek a protective order or other appropriate remedy.

WEBSITE; OTHER STATEMENTS – No statement contained at the ArWest Communications website (or any other website) or in any other advertisements or ArWest Communications literature or made by an employee or independent contractor of ArWest Communications modifies these Terms and Conditions (including the Software license, warranty and limitation of liability).

SAFETY – Improper use of the Beacon OEM Receiver can lead to injury to persons or property and/or malfunction of the product. The Beacon OEM Receiver should only be repaired by authorized ArWest Communications warranty service centers. Users should review and heed the safety warnings.

MISCELLANEOUS – The above Terms and Conditions may be amended, modified, superseded, or canceled, at any time by ArWest Communications. The above Terms and Conditions will be governed by, and construed in accordance with, the laws of the State of California, without reference to conflict of laws.

WEEE Directive

The following information is for EU-member states only:

The use of the symbol indicates that this product may not be treated as household waste. By ensuring this product is disposed of correctly, you will help prevent potential negative consequences for the environment and human health, which could otherwise be caused by inappropriate waste handling of this product. For more detailed information about the take-back and recycling of this product, please contact your supplier where you purchased the product or consult.



Preface

Technical Assistance

Technical Assistance

If you have a problem and cannot find the information you need in the product documentation, contact your local dealer. Alternatively, request technical support using the ArWest Communications World Wide Web site at: www.arwestcom.com

Return Material Authorization

Initially, the customer contacts support to report a problem. Please refer to support: support@arwestcom.com

If support determines the problem cannot be resolved over e-mail/internet, it will authorize the return of the unit for repair or replacement, depending on the nature of the problem.

PRODUCT FEATURES

1.1. Introduction

Marine Radiobeacon receiver (283.5 to 325 kHz) or Beacon receiver complies with Broadcast Standard for the USCG DGPS Navigation Service COMDTINST M16577.1. Beacon receiver is designed to receive pseudorange corrections transmitting by Radiobeacon stations. Maritime Radiobeacon DGNSS systems according to RTCM SC-104 version 2.3 are usually capable of broadcasting the following RTCM messages: 1, 2, 3, 5, 6, 7, 9, 15 (seldom), and 16. Radiobeacons are widely used throughout the world.

GNSS Radiobeacon transmissions meet stringent integrity and reliability requirements mandated by the International Association of Lighthouse Authorities.

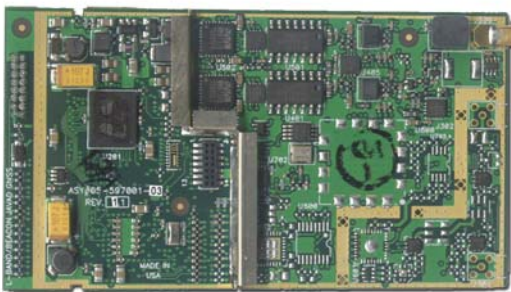


Figure 1-1. Beacon Receiver

The delivered product is a wireless system, which includes:

- Beacon Receiver – Beacon receiver OEM board;
- AWLaunch – Windows based Unit Configuration and Maintenance Software Application running on a IBM PC compatible computer and connecting to the device over RS-232 interface or USB-to-Serial adapter.

The setting can be done through the built-in Command Line interface (CLI), or through the configuration and maintenance application software running either on PC – AWLaunch.

The diagnostic feature of the Beacon Receiver system provides the information to monitor and maintain user's communications link.

The product is designed for maximum performance and reliability even in the hardest environments. Plug and play at its best, robust, withstanding the most adverse of conditions.

Product Features

Introduction

Media Access Control (MAC)

1.1.1. Media Access Control (MAC)

The following Media Access protocols are available for Beacon OEM Receiver modem:

1. Beacon protocols
2. Sleep mode¹ is an investment provided by MAC sub-layer that provides additional power saving. The wakeup from Sleep mode is user selectable either by an internal real-time clock, or by an external controller through the data interface control lines (RTS or DTR), or by SLEEP input line (CMOS/TTL compatible input lines).

1.1.2. Management Tools

The built-in management tools along with AWLaunch (configuration and monitoring software application) will provide the following benefits:

1. Easy user's interface for system configuration and monitoring using well developed CLI or intuitive GUI.
2. An ability to monitor status, alarms and radio performance through the intuitive GUI.
3. Software upgrades and improvements can be downloaded from AWLaunch to the units connected with PC/PDA.

1. This feature is not supported in the current firmware version, it will be supported in the future.

GENERAL DESCRIPTION

2.1. Physical Interfaces

2.1.1. Serial Data Interface

The serial asynchronous interface allows connection to external serial devices through RS232 interface. It is shared between user data and unit’s command/status information. The following options of serial port parameters are supported:

Table 2-1. Serial port parameters

Parameter	Options
Baud rate	115200, 57600, 38400, 19200, 14400, 9600, 4800, 2400, 1200 bauds per second
Flow control	None, Hardware
Data bits	8
Stop bits	1, 2
Parity	None

2.1.2. Power Interface

The power interface allows connection to an unregulated DC power source. The DC power source (third-party or user supplied) must provide DC power of $4.2V \pm 5\%$ DC.

2.1.3. Power Consumption

Power consumption of the Beacon OEM receiver at receiving mode is 1400 mW (refer to Table 2-2 for details).

Table 2-2. Power Consumption

Operating Mode / Description	Consumption
Maximum for Rx Full Operation Mode	1400 mW
Sleep Mode	300 mW
Standby Mode, ordered by SLEEP input pin	500 μ W

General Description

Physical Interfaces

Antenna

2.1.4. Antenna

The Beacon receiver should be used with 283.5 - 325 kHz antenna with following parameters:

- LNA Gain P30 dB
- LNA Noise Figure 1.5 dB

COMMAND LINE INTERFACE

The built-in user-friendly Command Line Interface (CLI) allows user to perform a full configuration of the unit and read the statistics and alarm status. It is the most powerful tool to configure the unit. It makes changes to all possible settings that system will not be able to determine automatically.

The CLI commands allow user to configure and reconfigure the unit's settings. The user configuration parameters that could be changed through the CLI are:

- Data Port Settings
 - Baud Rate
 - Flow control (None or RTS/CTS)
 - Stop bits
- Alarm Settings¹
- Radio operation modes
- Scanning modes
- Sleep modes²
 - On/Off
 - Activate by internal real-time clock
 - Activate through RTS/CTS lines
 - Activate by external sense lines
 - Activate by any combination of the parameters mentioned before

Note: The unit's configuration that is set or modified through the CLI will be lost after unit's reboot, unless the saving operation is used to store a new setting in the unit's configuration file.

The CLI commands also provide filing operations, which include:

- Downloading
 - Unit's Configuration files
 - Software Images
- Uploading Unit's Configuration files
- Saving into the configuration files the configuration parameters modified through the CLI.

1. The Alarm is not supported currently. It will be supported in the future firmware version.

2. The Sleep is not supported currently. It will be supported in the future firmware version.

Command Line Interface

Command Line Interface Convention
Software Switching to Maintenance Mode

3.1. Command Line Interface Convention

The following convention is implemented in Beacon Receiver Command Line Interface (CLI):

- The Carriage Return/Line Feed (CR/LF, 0x0D/0x0A) is a command delimiter.
- The Carriage Return/Line Feed (CR/LF, 0x0D/0x0A) is a reply delimiter followed by the “CLI>” prompt if Echo option is On.
- The Carriage Return/Line Feed (CR/LF, 0x0D/0x0A) is a reply delimiter if Echo option is Off (default option).
- The 2-digit number followed by “@” in the unit’s reply indicates the error code (refer to Table 3-1 for description).
- A successfully performed command is replied by @00 code for both Echo ON and OFF modes.
- A command with the certain [Parameter Name] and blank [Parameter List] displays the current settings for a given parameter.
- To set the mode ordered by CLI commands as permanent User Setting (the setting automatically selected for the boot-up unit) the SAVE command must be asserted.
- [/?] orders to show the help information for the given command.
- Commands are not key sensitive; small, none capital characters can be used to enter CLI commands.

Table 3-1. Command Line Interface Error Codes

Error Code	Short Description
0x01	Command Syntax Error. A command followed by “/?” displays a command usage.
0x02	The parameter has a format error. A command with the certain [Parameter Name] followed by “/?” displays the format and range of the variable.
0x03	The parameter is out of allowed range. A command with the certain [Parameter Name] followed by “/?” displays the format and range of the variable.
0x04	The command is not valid for specific radio model. To display the list of available commands, the HELP command must be used (see “Software Switching to Maintenance Mode”).
0x05	Unspecified Error

3.1.1. Software Switching to Maintenance Mode

To switch to Maintenance mode the special byte-sequences with special meanings are used:

- Escape-Sequence: “+++” with 20 ms guard time before and after the command characters
- Escape-Acknowledge: “@00<CR><LF>” 20 ms toggling on CTS control line needed to acknowledge switching from Data to Maintenance mode and vice versa. In Maintenance mode, the unit’s serial port must keep CTS line always active.

Happy Flow

1. In data-mode the unit starts looking for the Escape-sequence if there is no data from DTE for more than 20 ms (Start Guard Time).
2. If the unit detects the Escape-Sequence:
 - The Receiver immediately stops forwarding to DTE the data received over the air and buffers it instead.
3. The radio unit waits for 20 ms and then sends Escape-Acknowledge to DTE if there is no data from DTE during 20 ms of Stop Guard Time.
4. The unit goes to Maintenance mode and discards Escape-Sequence from input buffer. The modem is immediately ready to receive commands. At the same time it continues buffering the data received over the air since step 2.

3.1.2. Hardware Switching to Maintenance Mode

As alternative to Software Switching, the switching through the MP/DP control line can be used (this control line can be also used as Data Terminal Ready, DTR). To set Maintenance mode, the DTE must assert DTR signal active (0v level). By falling edge of DTR signal the unit goes to Maintenance mode and then sends Escape-Acknowledge to DTE („@00<CR><LF>“).

20 ms toggling on CTS control line followed by Escape-Acknowledge response is needed to acknowledge switching from Data to Maintenance mode and vice versa. In Maintenance Mode, the unit's serial port must keep Clear to Send (CTS) line always active (see also “Special Commands” on page 19).

Note: The powered up radio modem always goes to data mode.

3.1.3. Switching to Data Mode

- DTE sends the CLI command „DATAMODE<CR><LF>“ to the unit.
- Unit immediately goes to data mode without Escape Acknowledge.
- If no valid CLI commands received from DTE within 1 minute, the unit will automatically switch back to data-mode.

Note: The data received over the air could be lost due to Rx buffer overflow if the unit stays in Maintenance mode longer than 15 seconds.

Command Line Interface

Networking Commands

LINK

3.2. Networking Commands

3.2.1. LINK

The LINK command is responsible for configuring radio's operation mode.

LINK [*Parameter Name*] [*Parameters List*] [/?]

Parameter Name	Parameter List
CHAN	Sets/gets the current frequency channel number. Up to 32 channels are available in the channel map (example LINK CHAN 24). Refer to MAP command about creating and modifying the channel map.
SIGTYPE	Sets/gets the signal type 1 - 100 bps 2 - 200 bps 3 - 50 bps

3.2.2. MAP

The MAP command is used to create, modify and save the frequency channel map of the Beacon receiver.

MAP [*C<Parameter>*][*F<Parameter>*][*SAVE*]

Parameter Name	Description
C	Channel number (1- 32)
F	Carrier frequency in Hz
SAVE	Saves the channel map

The MAP command without parameters displays the channel map of the active receiver.:

Example: MAP c1 F314000 - sets the 314 kHz frequency to channel number 1;
MAP SAVE - saves the channel map.

●

3.2.3. SCAN

The SCAN command is used to set/configure scanning modes. For Automatic scanning mode it is possible to select the Frequency scanning and Signal type scanning criteria.

SCAN [*Parameter Name*] [*Parameters List*] [/?]

Parameter Name	Parameter List
MODE	Sets/gets the scanning mode 0 – Manual 1 – Automatic Refer to “Beacon scanning modes” for scanning modes description.
FREQ	Sets/gets the frequency scanning criterion 1 – Full range scanning with 500 Hz step 2 – Channel map scanning Parameter FREQ is available for Automatic scanning mode only.
SIGTYPE	Sets/gets the signal type scanning mode 1 – 100 bps signals are scanned 2 – 200 bps signals are scanned 3 – 50 bps signals are scanned 4 – All signal types (200 bps, 100 bps, 50 bps) are scanned Parameter SIGTYPE is available for Automatic scanning mode only.
ALMANAC	Returns the Almanac table of available Beacon reference stations scanned by second (Slave) Beacon receiver. Each line of the table contains information (Frequency, RSSI, Signal type, Reference station ID) about one Beacon reference station. The following is the structure of the Almanac table’s line: <Frequency in Hz> <TAB> <RSSI in dBm> <TAB> <Signal type> <TAB> <REF Station ID> <CR> <LF>

Beacon Scanning modes

Beacon has the following two scanning modes:

1. *Automatic* (searching Beacon reference stations)

In this mode two independent Beacon channels start cooperative searching of Beacon reference stations using the selected criteria in 1.1 and 1.2. Each found reference station is recorded in the Almanac table where the following parameters of found station are specified: frequency, signal type, RSSI and Reference station ID. The RSSI parameter is recorded to determine the station providing the best RTCM signal. If no Beacon reference station is available the searching cycle is continued until one reference station is found. The Master Beacon locks to the first found reference station and starts RTCM data demodulation while the Slave Beacon continues searching in the background. If a synchronization loss occurs on Master Beacon then it switches to the best RTCM signal (which has the highest RSSI) from the list of Beacon reference stations recorded by Slave Beacon.

The following are the Beacon reference station searching criteria used in the algorithm of Automatic scanning mode.

1.1. Frequency scanning criteria

- Full range scanning with 500 Hz step – full frequency range is scanned with 500 Hz step (83 steps in the range from 283.5 kHz to 325 kHz);
- Frequency map scanning – only the frequencies defined in the frequency map are scanned.

Command Line Interface

Serial Interfacing Commands

ANTENNA

1.2. Signal type scanning criteria

- All – On each step of frequency scanning all signal types are scanned (200bps, 100bps, 50bps)
- 200 bps – only 200 bps signals are taken into account;
- 100 bps – only 100 bps signals are taken into account;
- 50 bps – only 50 bps signals are taken into account.

Note: If in Automatic scanning mode the frequency channel or signal type is selected (by LINK CHAN and LINK SIGTYPE commands correspondingly) then the scanning mode is switched to Manual by the firmware automatically.

2. Manual

In this mode operator specifies the frequency (in the range from 283.5 kHz to 325 kHz) and signal type (200 bps, 100 bps or 50 bps) for Master Beacon to tune. The Slave Beacon performs Full range scanning for all signal types and fills the Almanac table in parallel.

3.2.4. ANTENNA

The ANTENNA command is used to set the antenna power state of the external connector.

ANTENNA [*Parameter Name*] [*Parameters List*] [/?]

Parameter Name	Parameter List
POWER	0 - Switches off the antenna power on connector 1 - Switches on the antenna power on connector

3.3. Serial Interfacing Commands

3.3.1. PORT

The PORT command is responsible for data port interface configuration. The baud rate, flow control and stop bits can be configured. The data bits is set to 8 and parity to None in the firmware.

PORT [*Parameter Name*] [*Parameters List*] [/?]

Parameter Name	Parameter List
RATE	1 - 1200 baud rate 2 - 2400 baud rate 3 - 4800 baud rate 4 - 9600 baud rate 5 - 14400 baud rate 6 - 19200 baud rate 7 - 38400 baud rate 8 - 57600 baud rate 9 - 115200 baud rate
FLOW	0 – No flow control 2 – Hardware flow control is on
STOPBIT	0 - 1 stop bit, a default setting 1 - 2 stop bits

3.4. Special Commands

3.4.1. ALARM¹

The ALARM command is intended to set up the alarm indication mode and alarm control lines' behavior.

ALARM [*Parameter Name*] [*Parameters List*] [/?]

Parameter Name	Parameter List
TTL1	0 – TTL_OUT1 = logic “1” 1 – TTL_OUT1 = TTL_IN, received from remote unit (default settings)
TTL2	0 – TTL_OUT2 = logic “1” 1 – TTL_OUT2 = TTL_IN2, received from remote unit (default settings) 2 – TTL_OUT2 = SYNC Loss

3.4.2. BOOT

The BOOT command is intended to reboot the unit using selected user settings.

3.4.3. HELP

The HELP command types the list of all available commands:

```

HELP           - Display this usage
XMOD           - Activate X-Modem Protocol
BOOT          - Reboot the unit
LINK          - Set RF Link Operation Mode
SCAN          - Set scanning options and criteria
PORT          - Set Data Port Configuration
STATE        - Display Status and Statistics
SAVE          - Save Current Configuration into Configuration File
INFO          - Display Product ID along with Hardware/Software Versions
MAP           - Operate with Channel Map
ANTENNA       - Set the State of antenna power and selects the RF connector for Beacon receiver
DATAMODE      - Exit Command Mode
COMMAND /?    - Display Command Usage

```

1. Not supported in the current firmware version

Command Line Interface

Special Commands

SAVE

3.4.4. SAVE

The SAVE command is intended to store the unit's currently used configuration into the User Configuration file. The configuration stored in the User Configuration file is used for next boots.

3.4.5. SLEEP¹

The SLEEP command determines the sleep mode parameters. The sleeping Beacon OEM Receiver can be activated by real-time CLK, DTR/RTS lines, and command received through TTL inputs. The user can select one, two, or all three conditions.

SLEEP [*Parameter Name*] [*Parameters List*] [/?]

Parameter Name	Parameter List
CLK	0 – Do not activate by internal real-time clock (1 – 255) – Activate by internal real-time clock after 100 to 25500 msec of sleeping
HW	0 – Do not activate through DTR/RTS lines 1 – Activate through DTR/RTS lines
TTL	0 – Do not activate by external sense lines 1 – Activate by external sense lines
GTS	0 – Disable Sleep mode (default) (1 – 255) – Go to sleep mode if there is no activity in 10 to 2550 msec Example: SLEEP GTS 100 (go to sleep if there is no activity in 1000 ms)

1. Not supported in the current firmware version

3.5. Diagnostics and Identification Commands

3.5.1. INFO

The INFO command is used to retrieve the Radio ID along with its Hardware version, the loaded real-time software version/revision and BootLoader’s version/revision.

INFO [*Parameter Name*] [*Parameters List*] [/?]

Parameter Name	Parameter List
ID	Retrieves the device identifier.
SN	Retrieves the serial number of the modem (unique for each unit).
HW	Retrieves the version string of the hardware. 1.0 – hardware version in numeric “Major.Minor” format
SW	Retrieves the version string of the current firmware. Ver. 1.0 Rev. A – displays software’s version in numeric “Major.Minor” format and revision in numeric format (range from 01 to 99) for engineering releases and alphabetic format (A to Z) for manufacturing releases.
BL	Retrieves the version string of the BootLoader. Ver. 1.0 Rev. A – displays BootLoader’s version in numeric “Major.Minor”format and revision in numeric format (range from 01 to 99) for engineering releases and alphabetic format (A to Z) for manufacturing releases.

The INFO command without Parameter Name indicates all values:

```
Beacon Receiver
Product ID = 69
S/N = 000000 020303
Hardware = Ver 3.1
Software = Ver. 1.8 Rev 05
BootLoader = Ver. 3.0 Rev. 02
```

Command Line Interface

Diagnostics and Identification Commands

STATE

3.5.2. STATE

The STATE command is used to check the wireless link state of the Beacon receiver.

STATE [*Parameter Name*] [*Parameters List*] [/?]

Parameter Name	Parameter List
RSSI	Retrieves the calculated received signal level in dBm.
SYNC	Indicates the synchronization status: 0 - no synchronization 1 - synchronization established
FREQ	Retrieves the current channel frequency in Hz.
FREQOFFSET	Retrieves the tuned frequency offset relative to the set frequency after the synchronization established.
SYMRATE	Retrieves the current symbol rate.
TEMP	-30°C to +100°C retrieves the temperature inside enclosure.

TECHNICAL SPECIFICATIONS

A.1. Technical Specifications

A.1.1. Beacon Receiver Specification

Figure A-1. Beacon Receiver Specification

Component	Details
Frequency Range	283.5 - 325 kHz
Channel Spacing	500 Hz
Bit Rates	50, 100, 200 bps (manual or Auto selection)
Channels	2-channel, parallel operating
Operation Mode	manual/automatic
Adjacent Channel Rejection	65 dB \pm 1 dB @ for \pm 400 Hz
Cold Start Time	<1 min
Warm Start Time	<2 seconds
Modulation	Minimum Shift Keying (MSK)
Sensitivity	1.5 μ Vm for 6 dB SNR (200 bps)
Dynamic Range	100 dB
Frequency Offset	\pm 0.5 Hz (~ 1.5 ppm)
Correction Output Protocol	RTCM SC-104

A.1.2. General

Component	Details
Input Voltage	4.2 V \pm 5%
Power Consumption	1400 mW
Operation Temperature	-40°C - +75°C
Storage Temperature	-40°C - +80°C
Dimensions	L: 80 mm x W: 46.5 mm x H: 7.6 / 9.5 mm
Weight	41 g

Technical Specifications

Technical Specifications

Mechanical Properties For End-product

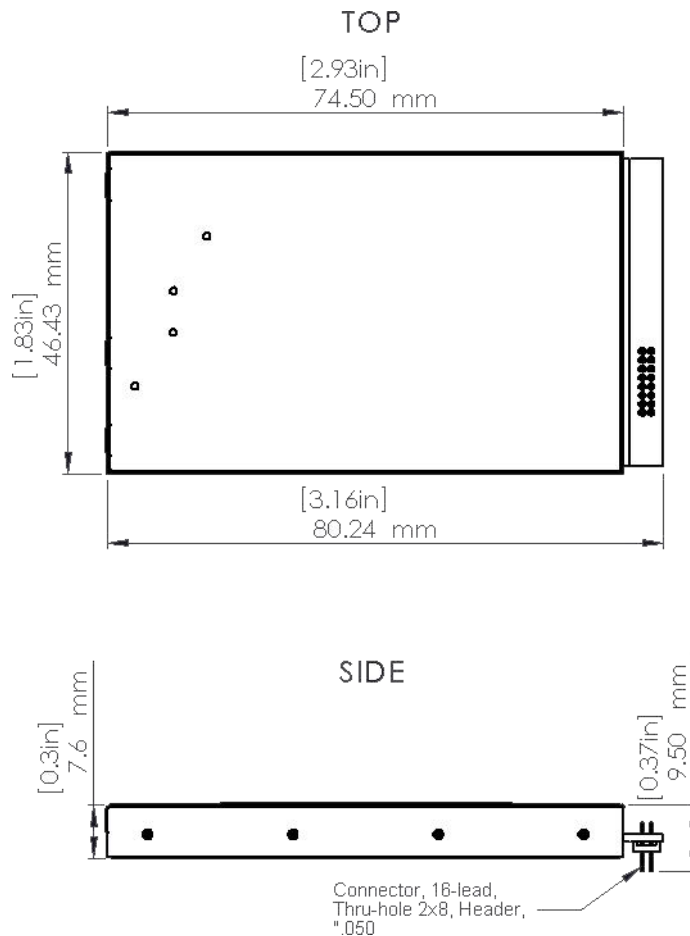
Features

- DSP-Modem
- Multi-Modulation Technologies
- Zero-IF Technologies
- Up to 115200 bps Data Rate
- Compact Design

A.1.3. Mechanical Properties For End-product

Dimensions for PCB Mounted Enclosure:

80 mm x W: 46.5 mm x H: 7.6/9.5 mm (3.15" x 1.83" x 0.3")



A.2. External Connectors

A.2.1. Antenna Connector

Through the central pin of the connector the power is being supplied to the antenna LNA. The internal power supply provides 4.2 V DC and max 0.2 A. If an antenna needs another voltage, the external power supply should be connected to the pin 10 of main connector J1. If jumper R117 is installed, the antenna supply voltage through the central pin of antenna connector is equal to the external voltage applied to this pin. The external voltage should be in range +5 ... +15 VDC and the current is less than 0.2 A.

A.2.2. User Ports' Connector (Main connector J1)

The user ports' connector is used to provide connection with an external DTE or with the PC running AWLaunch management software applications.

Beacon Receiver in PCB mounted enclosure uses 16-Lead Header Connector, ECS Corp. P/N 9616-D1-01-03.

PIN #	Signal Designator	Signal name	Description	I/O	Comments
1	GND	GND	Ground	-	Signal and Chassis Ground
2	DSP UART 1	TXD	Transmit Data	TTL Input	Serial Data Input
3	DSP UART 2	RXD	Receive Data	TTL Output	Output for received serial data
4	DPORT5	DTR or DP/MP	Data Terminal Ready	TTL Input	Control line can be used as a backup method for entering Command mode: (0V) – Maintenance Mode; (3.3V) – Data Mode An internal 100K pull-up enables Data Mode if this signal is left unconnected. Maintenance Mode is also accessible by transmitting an escape sequence
5	DPORT1	CTS	Clear to Send	TTL Output	Used to control data flow from the user to the radio: (0V) –Data buffer not full, (3.3V) – Data buffer full
6	TTLI1	SLEEP	Sleeps/wakes radio Receive only	TTL Input	In sleep mode, all radio functions are disabled consuming less than 50µA. An internal 10K pull-down wakes up the radio if this signal is left unconnected. At wake up, any user programmed configuration settings are refreshed from flash memory, clearing any temporary settings that may have been set: (3.3V) – Sleep Radio; (0V) – Wake Radio As an option could be used as TTL Input Line 1
7	DPORT3	DCD	Data Carrier Detect	TTL Output	Used by remote to indicate that the remote has successfully acquired the signal from base station: (0V) – Carrier detected (synchronized); (3.3V) – No carrier detected (not synchronized)

Technical Specifications

External Connectors

User Ports' Connector (Main connector J1)

PIN #	Signal Designator	Signal name	Description	I/O	Comments
8	DPORT4	RTS	Request to Send	TTL Input	Gates the flow of receive data from the radio to the user on or off. An internal 10K pull-down enables data receive if this signal is left unconnected. In normal operation, this signal should be asserted: (0V) – Receive data (RxD) enabled (3.3V) – Receive data (RxD) disabled
9	DPORT2	DSR	Data Set Ready	TTL Output	Used to control transmit flow from the user to the radio: (0V) – Receive buffer has data to transfer; (3.3V) – Receive buffer is empty
10	ANT_DC	ANT_DC	External Power for Antenna LNA	Power Input	External Power for Antenna LNA +5...+15 VDC
11	TTLO1	TTLOUT1	TTL Output Line 1	TTL Output	Reserve line
12	TTLO2	TTLOUT2	TTL Output Line 2	TTL Output	Reserve line
13	GND	GND	Ground	-	Signal and Chassis Ground
14	TTLI2	TTLIN	TTL Input line	TTL Input	An internal 100K pull-up resistor is applied
15	VCC42	PWR	Power Supply	External	Regulated positive 4.2V DC from ext. Power Supply
16	VCC42	PWR	Power Supply	External	Regulated positive 4.2V DC from ext. Power Supply

SAFETY WARNINGS

Read these instructions.

- Keep these instructions.
- Heed all warnings.
- Follow all instructions.
- Clean only with a damp cloth.
- Do not block any of the ventilation openings. Install in accordance with the manufacturer's instructions.
- Do not install near any heat sources such as radiators, heat registers, stoves, or other apparatus (including amplifiers) that produce heat.
- Protect the power cord from being walked on or pinched particularly at plugs, convenience receptacles, and the point where they exit from the apparatus.
- Only use attachments/accessories specified by the manufacturer.
- Refer all servicing to qualified service personnel. Servicing is required when the apparatus has been damaged in any way, such as power-supply cord or plug is damaged, liquid has been spilled or objects have fallen into the apparatus, or has been dropped.
- Apparatus shall not be exposed to dripping or splashing and no objects filled with liquids, shall be placed on the apparatus.

B.1. General Warnings

This product should never be used:

- Without the user thoroughly understanding operator's manual.
- After disabling safety systems or altering the product.
- With unauthorized accessories.
- Contrary to applicable laws, rules, and regulations.

DANGER: THE BEACON RECEIVER SHOULD NEVER BE USED IN DANGEROUS ENVIRONMENTS.

Safety Warnings

General Warnings

WARRANTY TERMS

ArWest Communications Corp., Inc. (“Company”) warrants, to the end-user only, that the Narrow Band Radio Modems (“Radios”) purchased (a) conforms to the Company’s published specifications for the model purchased, and (b) is free from defects in material or workmanship. The duration of this warranty is twelve (12) months¹ from date of purchase and any claim for breach of warranty must be brought to the Company’s attention within such twelve (12) month period and the Receiver must be returned for action on any such claim within twelve (12) months from the date of purchase. Within a reasonable period of time after a claim, the Company will correct any failure of the Radio to conform to specifications or any defect in materials or workmanship, or replace the Radio, or, at its option, provide a full refund of the purchase price. A repaired or replaced product is warranted for 90 days from the date of return shipment to the buyer, or for the balance of the original warranty period, whichever is longer. These remedies are the buyer’s exclusive remedies for breach of warranty.

To obtain warranty service, the buyer must return the Radio, postage-paid, with proof of the date of original purchase and the buyer's return address to the Company or an authorized service center. The Company will not be responsible for any loss or damage to the product incurred while it is in transit or is being shipped for repair. It is the buyer's responsibility to arrange for insurance, if the buyer so desires.

The Company does not warrant (a) any product, components or parts not manufactured by the Company, (b) defects caused by failure to provide a suitable installation environment for the Radio, (c) damage caused by disasters such as fire, flood, wind, and lightning, (e) damage caused by unauthorized attachments or modification, (f) damage during shipment, (g) any other abuse or misuse by the buyer, (h) that the Radio will be free from any claim for infringement of any patent, trademark, copyright or other proprietary right, including trade secrets.

THE FOREGOING WARRANTIES ARE IN LIEU OF ALL OTHER WARRANTIES, EXPRESS OR IMPLIED, INCLUDING BUT NOT LIMITED TO THE IMPLIED WARRANTIES OF MERCHANTABILITY AND FITNESS FOR A PARTICULAR PURPOSE, AND IF APPLICABLE, IMPLIED WARRANTIES UNDER ARTICLE 35 OF THE UNITED NATIONS CONVENTION ON CONTRACTS FOR THE INTERNATIONAL SALE OF GOODS.

IN NO CASE SHALL THE COMPANY BE LIABLE FOR ANY SPECIAL, INCIDENTAL, OR CONSEQUENTIAL DAMAGES ARISING DIRECTLY OR INDIRECTLY OUT OF THE OWNERSHIP, USE OR OPERATION OF THE RADIO REGARDLESS OF WHETHER SUCH DAMAGES ARE PREDICATED OR BASED UPON BREACH OF WARRANTY, BREACH OF CONTRACT, NEGLIGENCE, STRICT TORT, OR ANY OTHER LEGAL THEORY. SUCH DAMAGES INCLUDE, BUT ARE NOT LIMITED TO, LOSS OF PROFITS, LOSS OF SAVINGS OR REVENUE, LOSS OF USE OF THE RADIO OR ANY ASSOCIATED EQUIPMENT, COST OF CAPITAL, COST OF ANY SUBSTITUTE EQUIPMENT, FACILITIES OR SERVICES, THE CLAIMS

1. The warranty against defects in ArWest adapter, antenna, battery, charger, or cable is 90 days.

Warranty Terms

OF THIRD PARTIES, INCLUDING CUSTOMERS AND INJURY TO PROPERTY. THIS LIMITATION DOES NOT APPLY TO CLAIMS FOR PERSONAL INJURY. SOME STATES DO NOT ALLOW LIMITS ON WARRANTIES, OR ON REMEDIES FOR BREACH IN CERTAIN TRANSACTIONS. IN SUCH STATES, THE LIMITS IN THIS PARAGRAPH AND THE PRECEDING PARAGRAPH MAY NOT APPLY.

No employee of the Company, or any other party, is authorized to make any warranty in addition to those made in this document. This warranty allocates the risks of product failure between the Company and the buyer. This allocation is recognized by both parties and is reflected in the price of the goods. The buyer acknowledges that it has read this warranty, understands it, and is bound by its terms. This limited warranty is governed by the laws of the State of California, without reference to its conflict of law provisions or the U.N. Convention on Contracts for the International Sale of Goods.

READER COMMENT FORM

We appreciate your comments and suggestions for improving this publication.

I use the following ArWest product _____
for _____

Please circle a response for each of the statements below:

1 = Strongly Agree 2 = Agree 3 = Neutral 4 = Disagree 5 = Strongly Disagree

The manual is well organized.	1	2	3	4	5
I can find the information I want.	1	2	3	4	5
The information in the manual is accurate.	1	2	3	4	5
I can easily understand the instructions.	1	2	3	4	5
The manual contains enough examples.	1	2	3	4	5
The examples are appropriate and helpful.	1	2	3	4	5
The layout and format are attractive and useful.	1	2	3	4	5
The illustrations are clear and helpful.	1	2	3	4	5
The manual is:	too long just right too short				

Please answer the following questions:

Which sections do you use the most? _____

What do you like best about the manual? _____

What do you like least about the manual? _____

Optional

Name _____

Company _____

Address _____

Telephone _____ Fax _____

Please mail to the ArWest local office listed on the back cover. All comments and suggestions become the property of ArWest Communications.



900 Rock Avenue, San Jose, CA 95131 USA

Tel: + 1(408) 770-1790

Fax: + 1(408) 770-1799

www.arwestcom.com

Copyright © ArWest Communications, 2012
All rights reserved. No unauthorized duplication.