



AssayMax™
Human Prekallikrein ELISA Kit

Assaypro LLC
3400 Harry S Truman Blvd
St. Charles, MO 63301
T (636) 447-9175
F (636) 395-7419
www.assaypro.com

For any questions regarding troubleshooting or performing the assay, please contact our support team at support@assaypro.com.

Thank you for choosing Assaypro.

Assay Summary

Step 1. Add 50 μ l of Standard or Sample per well.
Incubate 2 hours.

Step 2. Wash, then add 50 μ l of Biotinylated Antibody per well.
Incubate 1 hour.

Step 3. Wash, then add 50 μ l of SP Conjugate per well.
Incubate 30 minutes.

Step 4. Wash, then add 50 μ l of Chromogen Substrate per well.
Incubate 20 minutes.

Step 5. Add 50 μ l of Stop Solution per well.
Read at 450 nm immediately.

Symbol Key



Consult instructions for use.

Assay Template

[illegible]

Human Prekallikrein (PK) ELISA Kit

Catalog No. EK2111-1

Sample insert for reference use only

Introduction

Prekallikrein (PK), also known as Fletcher factor, is an 88 kDa serine protease that mostly circulates as a complex with high molecular weight kininogen (1). Human plasma PK is synthesized as a precursor with a signal peptide of 19 amino acids and the mature circulating protein is a single-chain polypeptide of 619 amino acids. It participates in the surface-dependent activation of blood coagulation, fibrinolysis, kinin generation, and inflammation. When cleaved by factor XIIa, PK is converted into kallikrein with an N-terminal heavy chain (371 amino acids) and a catalytic light chain (248 amino acids) held together by a disulfide bond (2). Plasma kallikrein liberates kinins (bradykinin and kallidin) from the kininogens to regulate vasodilation and inflammation (3). PK deficient patients have prolonged activated partial thromboplastin time without having any bleeding disorder (4).

Principle of the Assay

The AssayMax™ Human Prekallikrein ELISA (Enzyme-Linked Immunosorbent Assay) Kit is designed for detection of prekallikrein in human **plasma, serum, saliva, milk, CSF, and cell culture samples**. This assay employs a quantitative **sandwich enzyme immunoassay** technique that measures human prekallikrein in approximately 4 hours. A polyclonal antibody specific for human prekallikrein has been pre-coated onto a 96-well microplate with removable strips. Prekallikrein in standards and samples is sandwiched by the immobilized antibody and a biotinylated polyclonal antibody specific for human prekallikrein, which is recognized by a streptavidin-peroxidase (SP) conjugate. All unbound material is washed away and a peroxidase enzyme substrate is added. The color development is stopped and the intensity of the color is measured.

Caution and Warning

- This product is for **Research Use Only** and is not intended for use in diagnostic procedures.
- Prepare all reagents (diluent buffer, wash buffer, standard, biotinylated antibody, and SP conjugate) as instructed, prior to running the assay.

- Prepare all samples prior to running the assay. The dilution factors for the samples are suggested in this insert. However, the user should determine the optimal dilution factor.
- Spin down the SP conjugate vial and the biotinylated antibody vial before opening and using contents.
- The Stop Solution is an acidic solution.
- The kit should not be used beyond the expiration date.

Reagents

- **Human Prekallikrein Microplate:** A 96-well polystyrene microplate (12 strips of 8 wells) coated with a polyclonal antibody against human prekallikrein.
- **Sealing Tapes:** Each kit contains 3 precut, pressure sensitive sealing tapes that can be cut to fit the format of the individual assay.
- **Human Prekallikrein Standard:** Human prekallikrein in a buffered protein base (96 ng, lyophilized).
- **Biotinylated Human Prekallikrein Antibody (50x):** A 50-fold concentrated biotinylated polyclonal antibody against human prekallikrein (120 µl).
- **MIX Diluent Concentrate (10x):** A 10-fold concentrated buffered protein base (30 ml).
- **Wash Buffer Concentrate (20x):** A 20-fold concentrated buffered surfactant (30 ml, 2 bottles).
- **SP Conjugate (100x):** A 100-fold concentrate (80 µl).
- **Chromogen Substrate (1x):** A stabilized peroxidase chromogen substrate tetramethylbenzidine (8 ml).
- **Stop Solution (1x):** A 0.5 N hydrochloric acid solution to stop the chromogen substrate reaction (12 ml).

Storage Condition

- Upon arrival, immediately store components of the kit at recommended temperatures up to the expiration date.
- Store SP Conjugate and Biotinylated Antibody at -20°C.
- Store Microplate, Diluent Concentrate (10x), Wash Buffer, Stop Solution, and Chromogen Substrate at 2-8°C.
- Unused microplate wells may be returned to the foil pouch with the desiccant packs and resealed. May be stored for up to 30 days in a vacuum desiccator.
- Store Standard at 2-8°C before reconstituting with Diluent and at -20°C after reconstituting with Diluent.

Other Supplies Required

- Microplate reader capable of measuring absorbance at 450 nm
- Pipettes (1-20 μl , 20-200 μl , 200-1000 μl , and multiple channel)
- Deionized or distilled reagent grade water

Sample Collection, Preparation, and Storage

- **Plasma:** Collect plasma using one-tenth volume of 0.1 M sodium citrate as an anticoagulant. Centrifuge samples at 3000 x *g* for 10 minutes and collect plasma. A 4000-fold sample dilution is suggested into MIX Diluent; however, user should determine optimal dilution factor depending on application needs. The undiluted samples can be stored at -20°C or below for up to 3 months. Avoid repeated freeze-thaw cycles (EDTA or Heparin can also be used as an anticoagulant).
- **Serum:** Samples should be collected into a serum separator tube. After clot formation, centrifuge samples at 3000 x *g* for 10 minutes and remove serum. A 4000-fold sample dilution is suggested into MIX Diluent; however, user should determine optimal dilution factor depending on application needs. The undiluted samples can be stored at -20°C or below for up to 3 months. Avoid repeated freeze-thaw cycles.
- **Saliva:** Collect saliva using sample tube. Centrifuge samples at 800 x *g* for 10 minutes. The sample is suggested for use at 1x; however, user should determine optimal dilution factor depending on application needs. The undiluted samples can be stored at -20°C or below for up to 3 months. Avoid repeated freeze-thaw cycles.
- **Milk:** Collect milk using sample tube. Centrifuge samples at 800 x *g* for 10 minutes. A 10-fold sample dilution is suggested into MIX Diluent; however, user should determine optimal dilution factor depending on application needs. The undiluted samples can be stored at -20°C or below for up to 3 months. Avoid repeated freeze-thaw cycles.
- **CSF:** Collect cerebrospinal fluid (CSF) using sample pot. Centrifuge samples at 3000 x *g* for 10 minutes. A 10-fold sample dilution is suggested into MIX Diluent; however, user should determine optimal dilution factor depending on application needs. The undiluted samples can be stored at -80°C for up to 3 months. Avoid repeated freeze-thaw cycles.
- **Cell Culture Supernatant:** Centrifuge cell culture media at 1500 rpm for 10 minutes at 4°C to remove debris and collect supernatant. Samples can be stored at -80°C. Avoid repeated freeze-thaw cycles.

Applicable samples may also include biofluids, cell culture, and tissue homogenates. If necessary, user should determine optimal dilution factor depending on application needs.

Refer to Dilution Guidelines for further instruction.

Guidelines for Dilutions of 100-fold or Greater <i>(for reference only; please follow the insert for specific dilution suggested)</i>	
100x	10000x
A) 4 µl sample: 396 µl buffer (100x) = 100-fold dilution <i>Assuming the needed volume is less than or equal to 400 µl.</i>	A) 4 µl sample : 396 µl buffer (100x) B) 4 µl of A : 396 µl buffer (100x) = 10000-fold dilution <i>Assuming the needed volume is less than or equal to 400 µl.</i>
1000x	100000x
A) 4 µl sample : 396 µl buffer (100x) B) 24 µl of A : 216 µl buffer (10x) = 1000-fold dilution <i>Assuming the needed volume is less than or equal to 240 µl.</i>	A) 4 µl sample : 396 µl buffer (100x) B) 4 µl of A : 396 µl buffer (100x) C) 24 µl of B : 216 µl buffer (10x) = 100000-fold dilution <i>Assuming the needed volume is less than or equal to 240 µl.</i>

Reagent Preparation

- Freshly dilute all reagents and bring all reagents to room temperature before use.
- MIX Diluent Concentrate (10x):** If crystals have formed in the concentrate, mix gently until the crystals have completely dissolved. Dilute the MIX Diluent Concentrate 10-fold with reagent grade water to produce a 1x solution. Store for up to 30 days at 2-8°C.
- Human Prekallikrein Standard:** Reconstitute the Human Prekallikrein Standard (96 ng) with 1.2 ml of MIX Diluent to generate an 80 ng/ml standard stock solution. Allow the vial to sit for 10 minutes with gentle agitation prior to making dilutions. Prepare duplicate or triplicate standard points by serially diluting from the standard stock solution (80 ng/ml) 2-fold with equal volume of MIX Diluent to produce 40, 20, 10, 5, 2.5, and 1.25 ng/ml solutions. MIX Diluent serves as the zero standard (0 ng/ml). Any remaining stock solution should be stored at -20°C and used within 30 days. Avoid repeated freeze-thaw cycles.

Standard Point	Dilution	[Prekallikrein] (ng/ml)
P1	1 part Standard (80 ng/ml)	80
P2	1 part P1 + 1 part MIX Diluent	40
P3	1 part P2 + 1 part MIX Diluent	20
P4	1 part P3 + 1 part MIX Diluent	10
P5	1 part P4 + 1 part MIX Diluent	5.0
P6	1 part P5 + 1 part MIX Diluent	2.5
P7	1 part P6 + 1 part MIX Diluent	1.25
P8	MIX Diluent	0.0

- **Biotinylated Human Prekallikrein Antibody (50x):** Spin down the antibody briefly and dilute the desired amount of the antibody 50-fold with MIX Diluent to produce a 1x solution. The undiluted antibody should be stored at -20°C.
- **Wash Buffer Concentrate (20x):** If crystals have formed in the concentrate, mix gently until the crystals have completely dissolved. Dilute the Wash Buffer Concentrate 20-fold with reagent grade water to produce a 1x solution.
- **SP Conjugate (100x):** Spin down the SP Conjugate briefly and dilute the desired amount of the conjugate 100-fold with MIX Diluent to produce a 1x solution. The undiluted conjugate should be stored at -20°C.

Assay Procedure

- Prepare all reagents, standard solutions, and samples as instructed. Bring all reagents to room temperature before use. The assay is performed at room temperature (20-25°C).
- Remove excess microplate strips from the plate frame and return them immediately to the foil pouch with desiccants inside. Reseal the pouch securely to minimize exposure to water vapor and store in a vacuum desiccator.
- Add 50 µl of Human Prekallikrein Standard or sample to each well. Gently tap plate to thoroughly coat the wells. Break any bubbles that may have formed. Cover wells with a sealing tape and incubate for 2 hours. Start the timer after the last addition.
- Wash the microplate manually or automatically using a microplate washer. Invert the plate and decant the contents; hit 4-5 times on absorbent material to completely remove the liquid. If washing manually, wash five times with 200 µl of Wash Buffer per well. Invert the plate each time and decant the contents; hit 4-5 times on absorbent material to completely remove the liquid. If using a microplate washer, wash six times with 300 µl of Wash Buffer per well; invert the plate and hit 4-5 times on absorbent material to completely remove the liquid.

- Add 50 μ l of Biotinylated Human Prekallikrein Antibody to each well. Gently tap plate to thoroughly coat the wells. Break any bubbles that may have formed. Cover wells with a sealing tape and incubate for 1 hour.
- Wash the microplate as described above.
- Add 50 μ l of SP Conjugate to each well. Gently tap plate to thoroughly coat the wells. Break any bubbles that may have formed. Cover wells with a sealing tape and incubate for 30 minutes. Turn on the microplate reader and set up the program in advance.
- Wash the microplate as described above.
- Add 50 μ l of Chromogen Substrate to each well. Gently tap plate to thoroughly coat the wells. Break any bubbles that may have formed. Incubate for 20 minutes or until the optimal blue color density develops.
- Add 50 μ l of Stop Solution to each well. The color will change from blue to yellow. Gently tap plate to ensure thorough mixing. Break any bubbles that may have formed.
- Read the absorbance on a microplate reader at a wavelength of 450 nm **immediately**. If wavelength correction is available, subtract readings at 570 nm from those at 450 nm to correct optical imperfections. Otherwise, read the plate at 450 nm only. Please note that some unstable black particles may be generated at high concentration points after stopping the reaction for about 10 minutes, which will reduce the readings.

Data Analysis

- Calculate the mean value of the duplicate or triplicate readings for each standard and sample.
- To generate a standard curve, plot the graph using the standard concentrations on the x-axis and the corresponding mean 450 nm absorbance (OD) on the y-axis. The best fit line can be determined by regression analysis using log-log or four-parameter logistic curve fit.
- Determine the unknown sample concentration from the Standard Curve and multiply the value by the dilution factor.

Typical Data

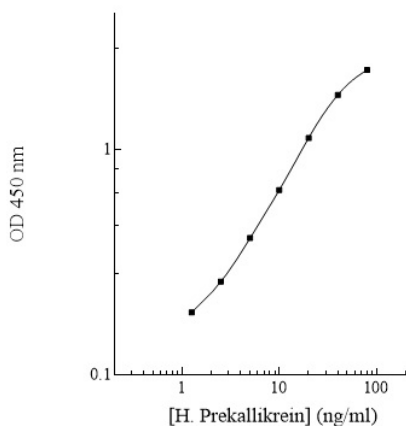
- The typical data is provided for reference only. Individual laboratory means may vary from the values listed. Variations between laboratories may be caused by technique differences.

Standard Point	ng/ml	OD	Average OD
P1	80	2.278 2.214	2.246
P2	40	1.718 1.762	1.740
P3	20	1.147 1.097	1.122
P4	10	0.676 0.644	0.660
P5	5.0	0.415 0.393	0.404
P6	2.5	0.252 0.266	0.259
P7	1.25	0.191 0.187	0.189
P8	0.0	0.095 0.096	0.096
Sample: Pooled Normal EDTA Plasma (4000x)		0.746 0.718	0.732

Standard Curve

- The curve is provided for illustration only. A standard curve should be generated each time the assay is performed.

Human Prekallikrein Standard Curve



Reference Value

- Plasma and serum samples from healthy adults were tested (n=40). On average, human prekallikrein level was 49 µg/ml.

Performance Characteristics

- The minimum detectable dose of human prekallikrein as calculated by 2SD from the mean of a zero standard was established to be 0.65 ng/ml.
- Intra-assay precision was determined by testing three plasma samples twenty times in one assay.
- Inter-assay precision was determined by testing three plasma samples in twenty assays.

	Intra-Assay Precision			Inter-Assay Precision		
Sample	1	2	3	1	2	3
n	20	20	20	20	20	20
CV (%)	4.4%	4.9%	4.5%	9.7%	9.5%	10.1%
Average CV (%)	4.6%			9.8%		

Recovery

Standard Added Value	5 – 40 ng/ml
Recovery %	87 – 114%
Average Recovery %	97%

Linearity

- Plasma and serum samples were serially diluted to test for linearity.

Average Percentage of Expected Value (%)		
Sample Dilution	Plasma	Serum
2000x	95%	93%
4000x	101%	98%
8000x	107%	104%

Cross-Reactivity

Species	Cross-Reactivity (%)
Canine	None
Bovine	None
Monkey	20%
Mouse	None
Rat	None
Swine	None
Rabbit	None
Protein	Cross-Reactivity (%)
Kallikrein	90%

- 10% FBS in culture media will not affect the assay.

Troubleshooting

Issue	Causes	Course of Action
Low Precision	Use of improper components	<ul style="list-style-type: none"> • Check the expiration date listed before use. • Do not interchange components from different lots.
	Improper wash step	<ul style="list-style-type: none"> • Check that the correct wash buffer is being used. • Check that all wells are empty after aspiration. • Check that the microplate washer is dispensing properly. • If washing by pipette, check for proper pipetting technique.
	Splashing of reagents while loading wells	<ul style="list-style-type: none"> • Pipette properly in a controlled and careful manner.
	Inconsistent volumes loaded into wells	<ul style="list-style-type: none"> • Pipette properly in a controlled and careful manner. • Check pipette calibration. • Check pipette for proper performance.
	Insufficient mixing of reagent dilutions	<ul style="list-style-type: none"> • Thoroughly agitate the lyophilized components after reconstitution. • Thoroughly mix dilutions.
	Improperly sealed microplate	<ul style="list-style-type: none"> • Check the microplate pouch for proper sealing. • Check that the microplate pouch has no punctures. • Check that three desiccants are inside the microplate pouch prior to sealing.
Unexpectedly Low or High Signal Intensity	Microplate was left unattended between steps	<ul style="list-style-type: none"> • Each step of the procedure should be performed uninterrupted.
	Omission of step	<ul style="list-style-type: none"> • Consult the provided procedure for complete list of steps.
	Steps performed in incorrect order	<ul style="list-style-type: none"> • Consult the provided procedure for the correct order.
	Insufficient amount of reagents added to wells	<ul style="list-style-type: none"> • Check pipette calibration. • Check pipette for proper performance.
	Wash step was skipped	<ul style="list-style-type: none"> • Consult the provided procedure for all wash steps.
	Improper wash buffer	<ul style="list-style-type: none"> • Check that the correct wash buffer is being used.
	Improper reagent preparation	<ul style="list-style-type: none"> • Consult reagent preparation section for the correct dilutions of all reagents.

	Insufficient or prolonged incubation periods	<ul style="list-style-type: none"> Consult the provided procedure for correct incubation time.
Deficient Standard Curve Fit	Non-optimal sample dilution	<ul style="list-style-type: none"> Sandwich ELISA: If samples generate OD values higher than the highest standard point (P1), dilute samples further and repeat the assay. Competitive ELISA: If samples generate OD values lower than the highest standard point (P1), dilute samples further and repeat the assay. User should determine the optimal dilution factor for samples.
	Contamination of reagents	<ul style="list-style-type: none"> A new tip must be used for each addition of different samples or reagents during the assay procedure.
	Contents of wells evaporate	<ul style="list-style-type: none"> Verify that the sealing film is firmly in place before placing the assay in the incubator or at room temperature.
	Improper pipetting	<ul style="list-style-type: none"> Pipette properly in a controlled and careful manner. Check pipette calibration. Check pipette for proper performance.
	Insufficient mixing of reagent dilutions	<ul style="list-style-type: none"> Thoroughly agitate the lyophilized components after reconstitution. Thoroughly mix dilutions.

References

- (1) Girolami A *et al.* (2010) *Expert Rev Hematol.* 3(6):685-695.
- (2) Chung DW *et al.* (1986) *Biochemistry.* 25(9):2410-2417.
- (3) Tait JF, Fujikawa K. (1986) *J Biol Chem.* 261(33):15396-15401.
- (4) Wynne J *et al.* (2004) *Brit J Haemat.* 127:220-223.

Version 2.1