

GPS Navigation Box

GBX2006R Plus/WP9200R

Car Navigation Box

User Manual

Ver. 0.1



GPS Navigation Box

Thank you for purchasing GPS Navigation Box.

Before you start operating navigation, please refer to the following tips.

1. Optional function would work once you connect external device.
2. Firmware updating should be finished within several minutes.
3. Remember to change the resolution value after changing the panel setting so that both of them will work correctly.
4. If you change setting of resolution or panel inappropriately, error of display or touching control would take place. Under the circumstances, please contact your distributor or agency and get a file named LCD92.inf. Put this file into your SD card and restart the navigation box. (please refer to page 27)
5. Product model GBX2006R Plus for plastic case.
6. Product model WP9200R for metal case.

Main Menu I	3
Player (Media Player for MP3 music)	4
Adjusting (RGB Adjust and CVBS Adjust)	8
Panel (select correct touching code for your panel)	11
Resolution Setting for Correct Image Display	12
Calibration for Correct Touch Response	15
Main Menu II	15
System: Auto Run Navigation On/Off	17
System: change the map's path	17
System: firmware update	20
System: Update Logo (Change your Start-up Picture)	22
System: Shortcut to Menu On/Off	24
Main Menu III	24
3G	26
Wireless	26
IE	28
Time	28
Main Menu IV	29
Cursor	30
Power Mode (Reboot mode or Suspend Mode)	31
UART: select correct device connected to Uart port	32
Info.: check OS and firmware version of WP9200	32
Installation	33
Pin Definition	36
Reset WP9200 with LCD92.INF	37

Main Menu I



Map access



Media Player access



HB, HS, VB adjusting



to next page



Select Panel model

GPS Navigation Box



Select System resolution



Touching calibration



to next page



Media Player access

1. Media Player: access to built-in Microsoft media player



GPS Navigation Box



2. User Player: access to your own media player



3. User Player Setup: set up the path for "User Player"



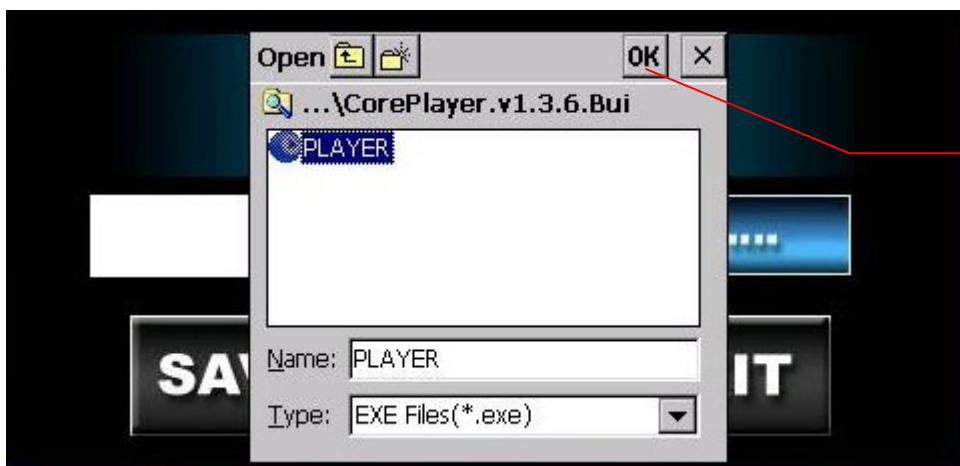
GPS Navigation Box



Browse



Select where you put your your media player, "SDMMC Disk" or "Hard Disk."



"OK," and "SAVE."

GPS Navigation Box

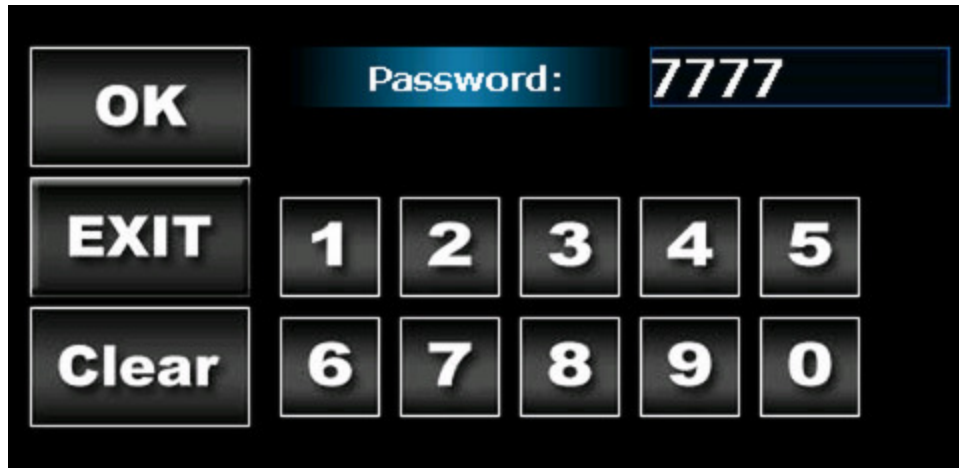


Next time when you select “User Player,” you will approach your media player.

GPS Navigation Box



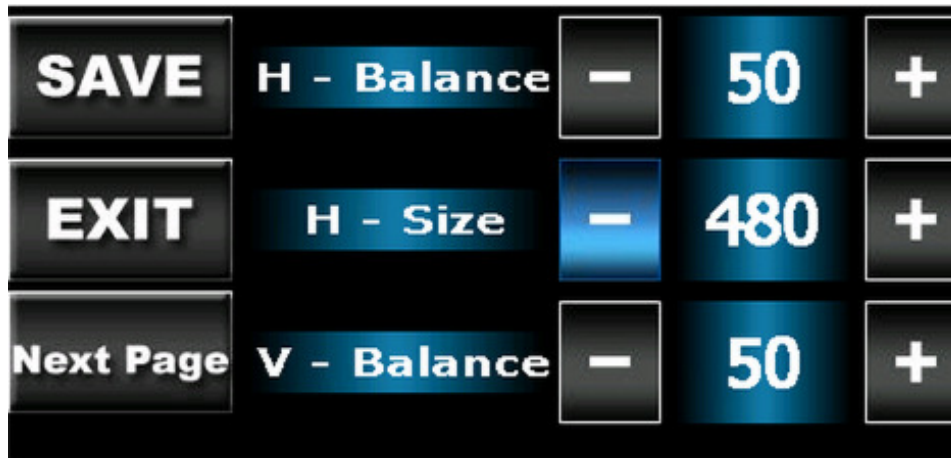
Adjusting, **input code: 7777**



1. RGB Adjust:



GPS Navigation Box



H-Balance—horizontal Balance of RGB image

H-Size—horizontal Size of RGB image

V-Balance—Vertical Balance of RGB image



Brightness—brightness of RGB image

H - Shift---RGB image horizontal moving

H - Scale----RGB image zoom in and zoom out

If the image is not in the middle, and you can't see the edge, please make an adjusting until you can see the complete image.

P.S.: When you adjusted to a wrong value, you might lost image, but as long as you didn't click "Save," please restart WP9200 and you can reset the values.

GPS Navigation Box

2. CVBS Adjust

Please select correct CVBS protocol according to your monitor.



Width---width of CVBS image

Height---height of CVBS image

Brightness---brightness of CVBS image

Contrast---color contrast of CVBS image

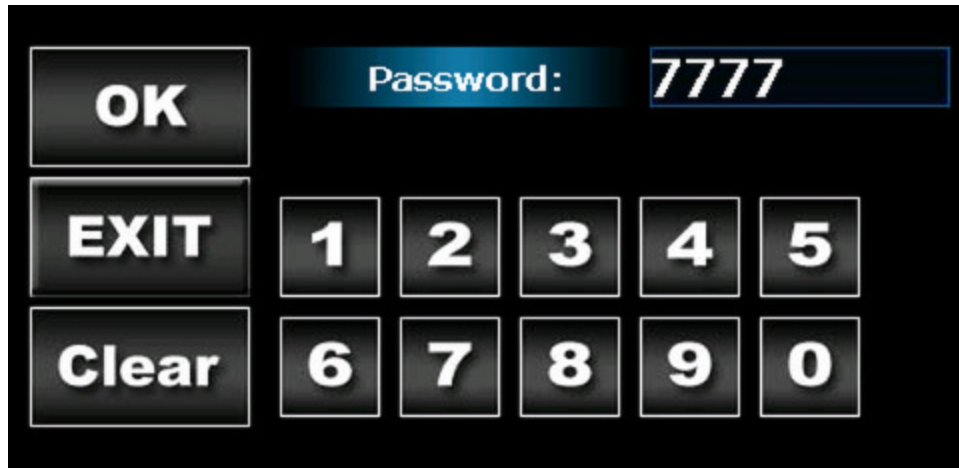
If the image is not in the middle, and you can't see the edge, please make an adjusting until you can see the complete image.

P.S.: When you adjusted to a wrong value, you might lost image, but as long as you didn't click "Save," please restart WP9200 and you can reset the values.

GPS Navigation Box



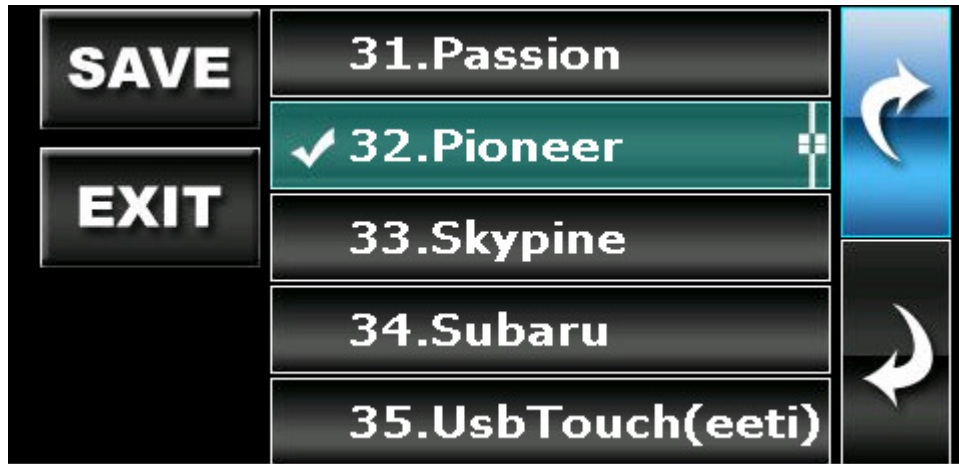
Panel, input code: 7777



Select the right panel model to match your car monitor in order to enable touching control and successful display.



GPS Navigation Box

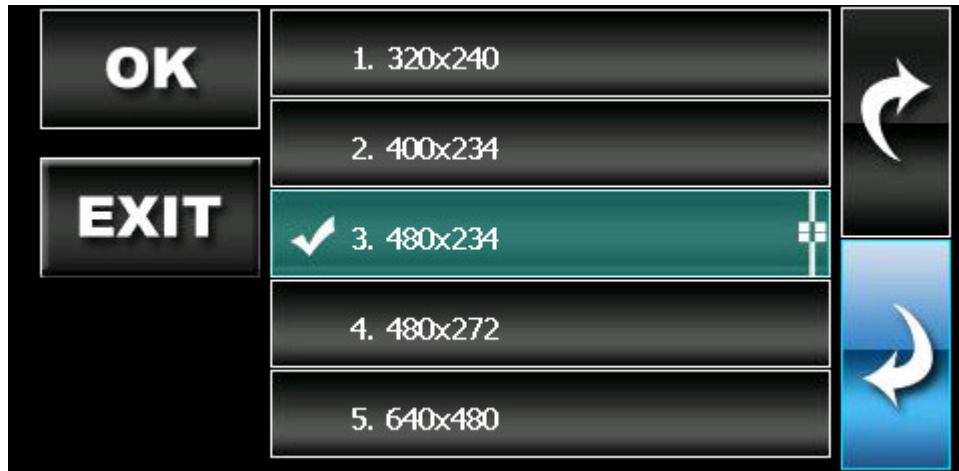


Resolution, input code: 7777

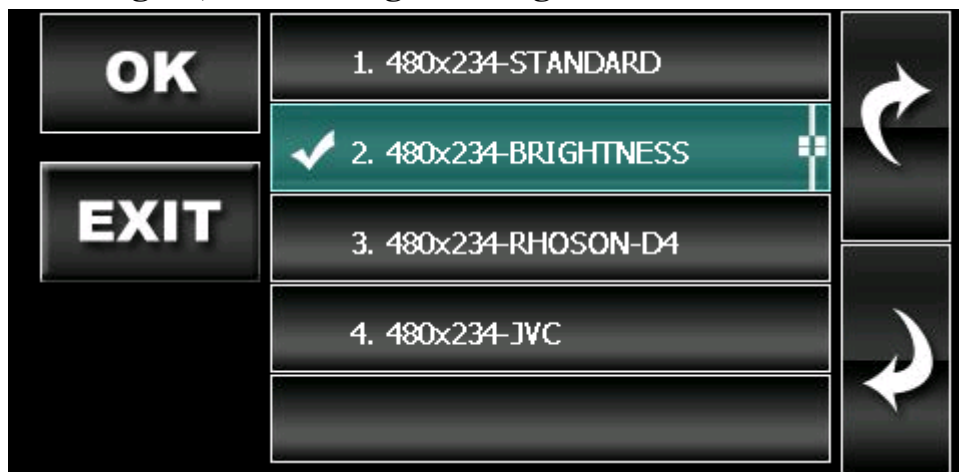


1st level, Select the correct resolution, and click “OK”:

GPS Navigation Box



2nd level, select the matched resolution with your panel, and click “OK” again, then the right setting is saved.



When your Kenwood panel's resolution is “640x420”, please select “640x480” and you need to use map of resolution 640x480

GPS Navigation Box

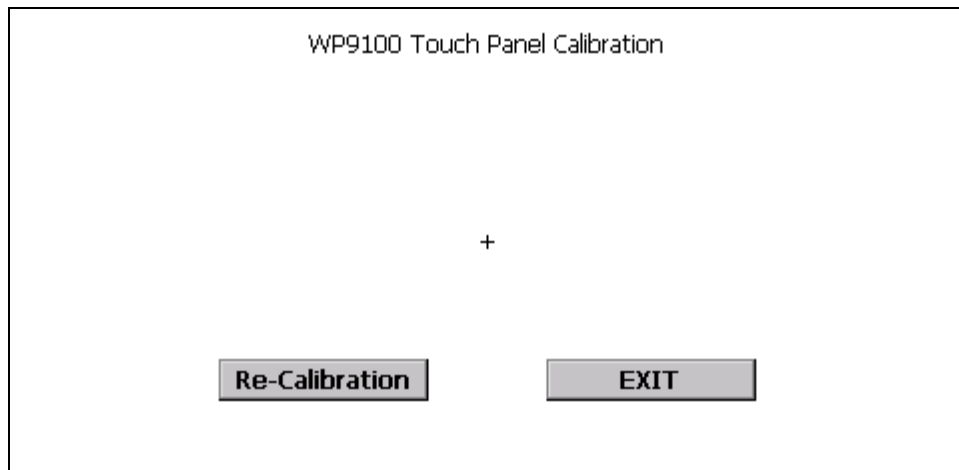
OK	1. 320x240	↶
	2. 400x234	
EXIT	3. 480x234	↷
	4. 480x272	
	✓ 5. 640x480	

OK	1. 640x480-STANDARD	↶
	2. 640x480-CARDIO	
EXIT	✓ 3. 640x420-KENWOOD4028	↷

GPS Navigation Box



Calibration



Touch “+” to ensure correct icon response.

Main Menu II



GPS Navigation Box



Setting page of System



Open Windows Explorer



Extra video input, or Digital TV access (Optional)



back to last page



Rear Camera access (Optional)



Setting page of Poi Detector (Optional)



Setting page of Radar Detector (Optional)



to next page

GPS Navigation Box



System

1. “Auto Run Navi ON” means the system would enter into the map software directly, otherwise it won’t.

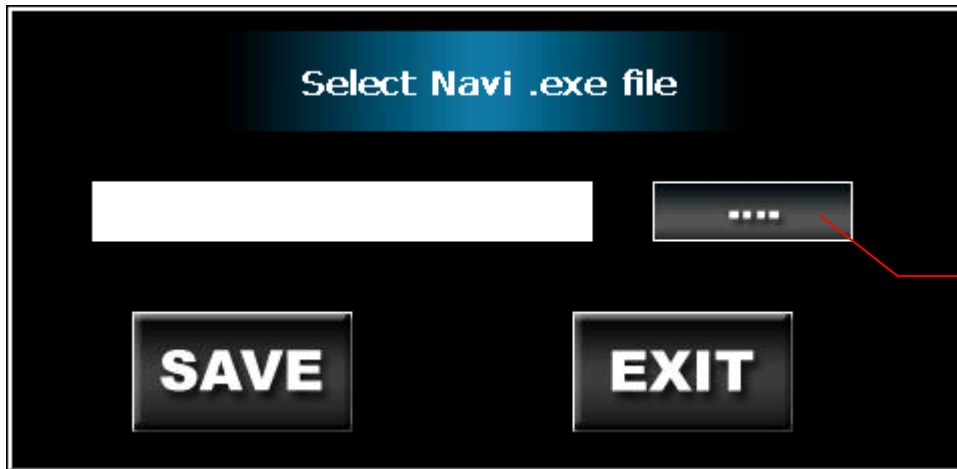


2. Steps of changing the map’s path:

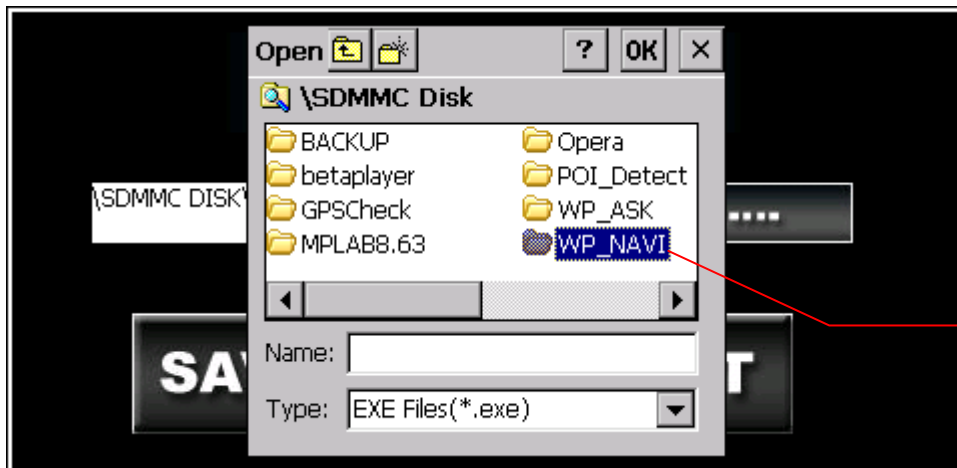
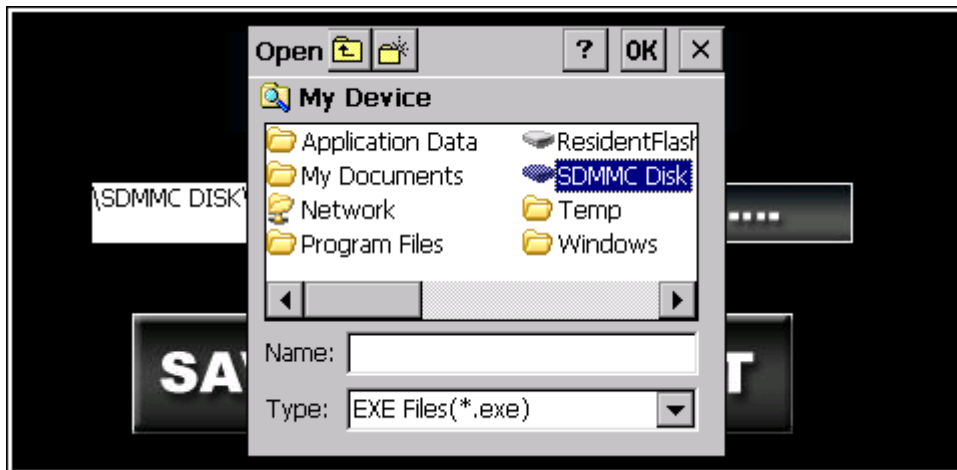
First of all, please put the map’s file into SD card, and insert SD card to WP9200, then, click icon “System” → “Navi Path”



GPS Navigation Box

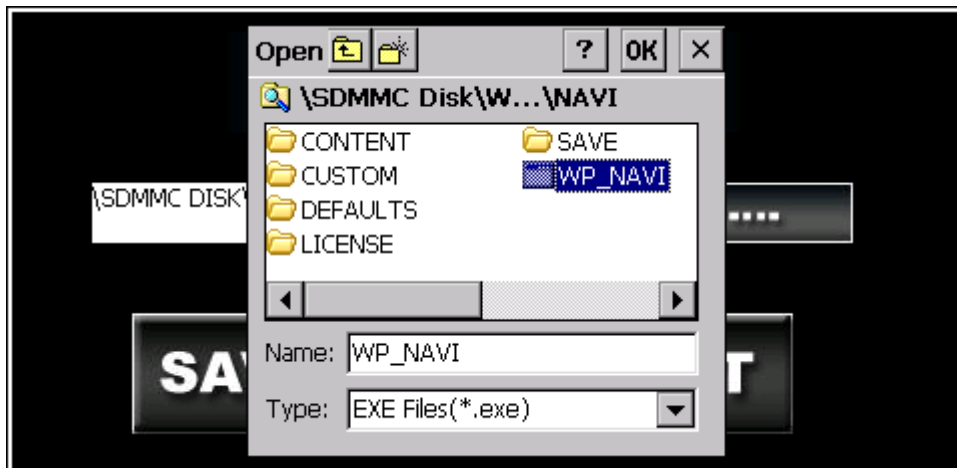
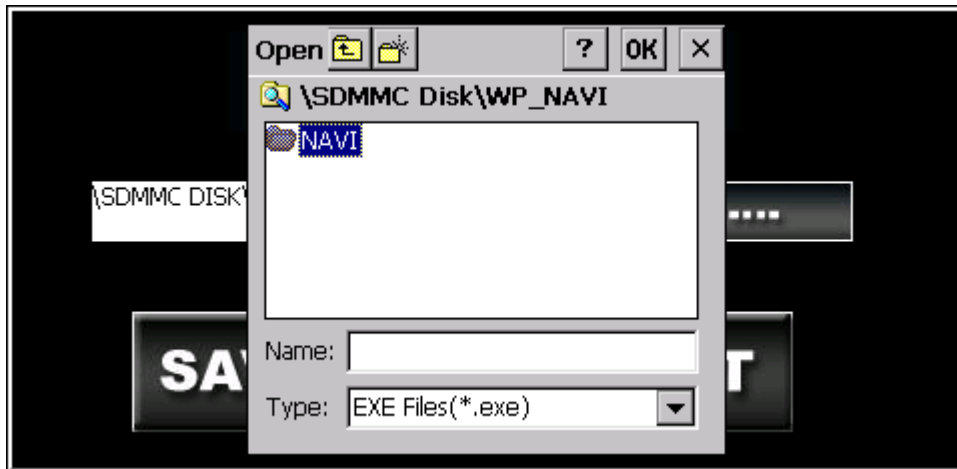


Browse, and select
"SDMMC Disk"



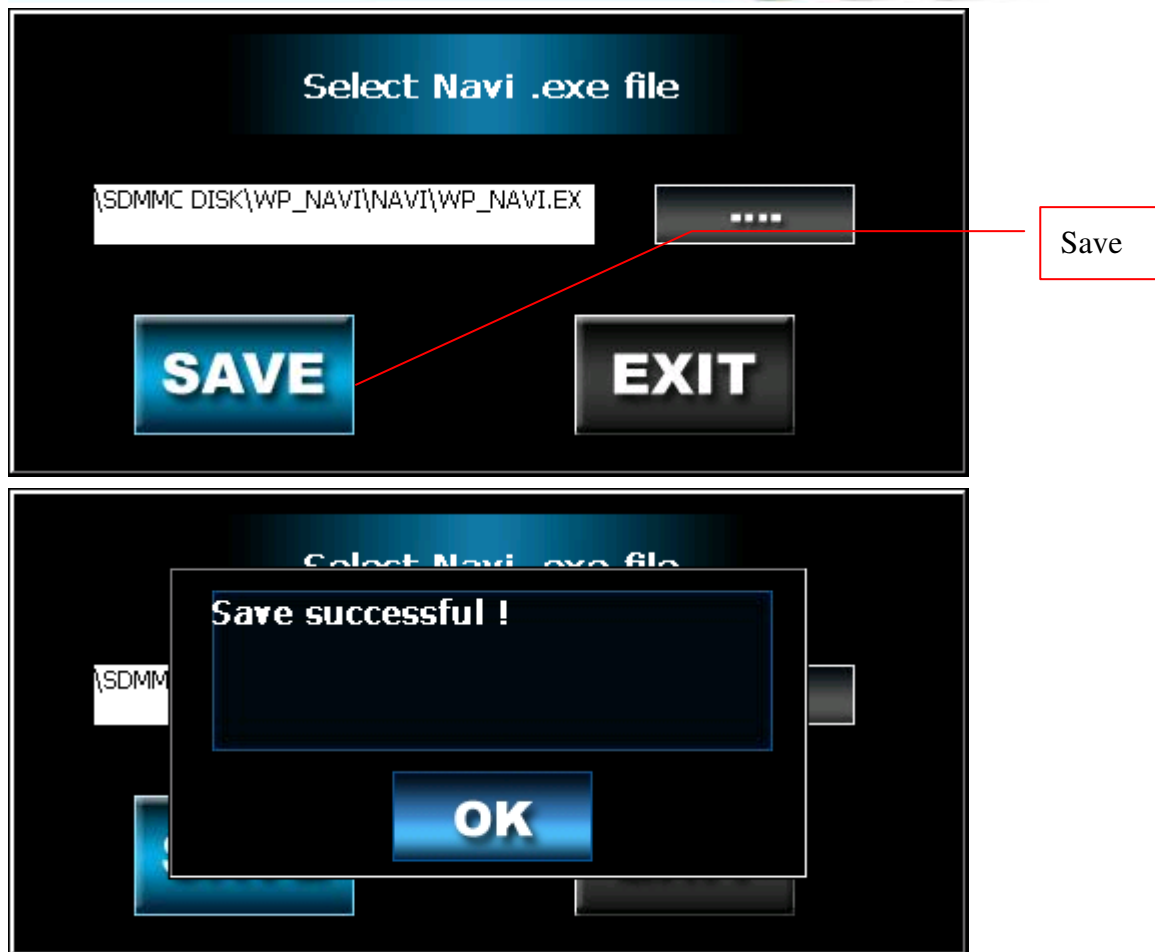
Enter correct folders
and continually find
".exe" file

GPS Navigation Box



Complete setting
your map's path

GPS Navigation Box



Note: the pre-setting of map's path is:

\SDMMC DISK\WP_NAVI\NAVI\WP_NAVI.EXE

By above steps, you can change map's path for your own WP9200.

3. Steps of Firmware Updating:

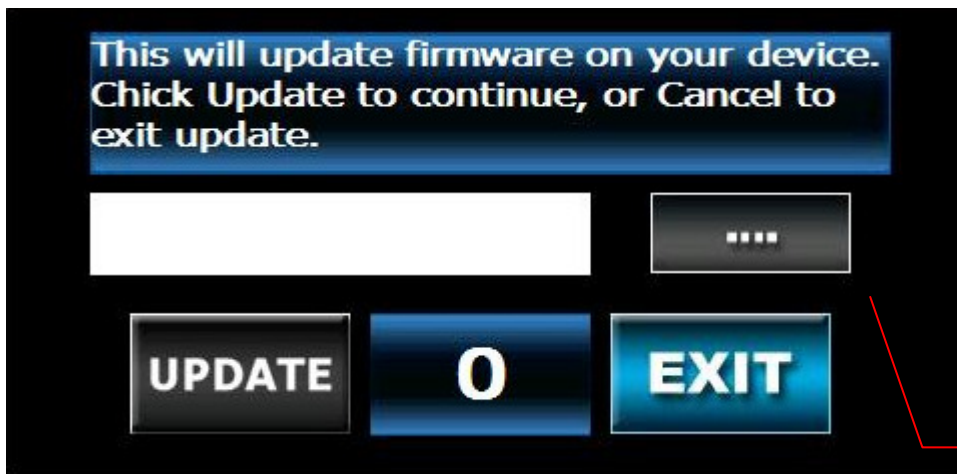
Put the appropriate file to SD card and plug SD card into the device, then press the button of "Update Firmware" and wait for the system to finish Firmware updating.

- a. **Firmware updating should be finished several minutes.**
- b. **If you found updating stuck, please restart navigation box and try again.**
- c. **During firmware updating, please don't operate WP9200.**

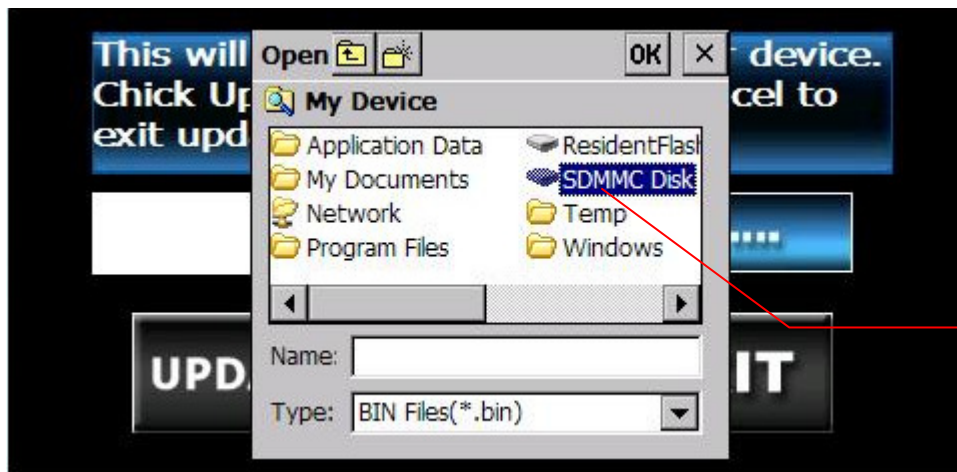
GPS Navigation Box



Click Here

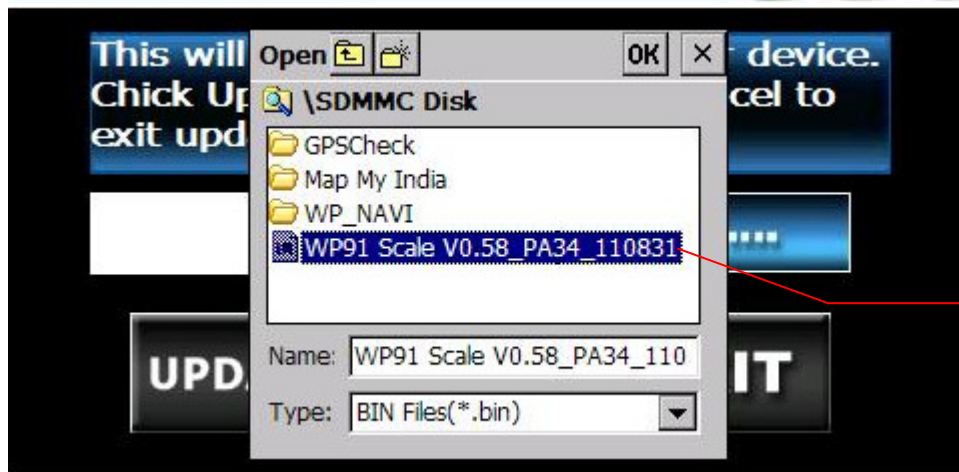


Click Here to open updating file

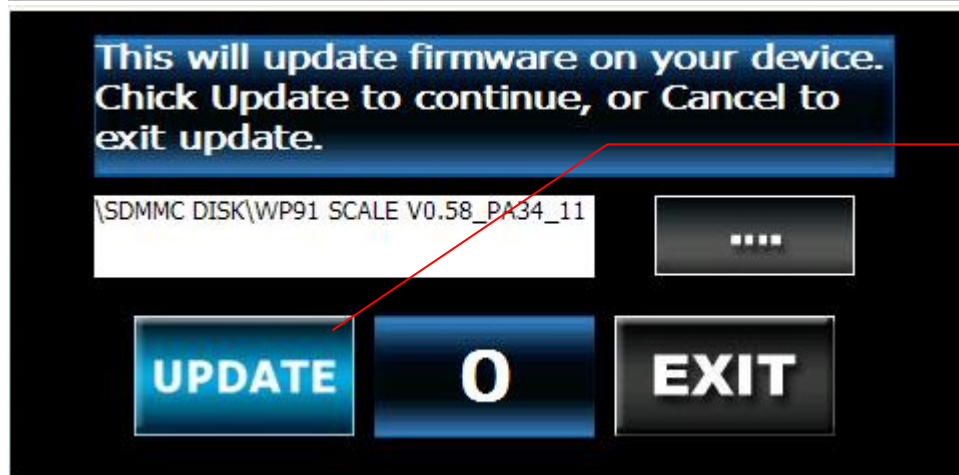


Search from SDMMC Disk

GPS Navigation Box



Look for a file of
“.bin” type



Click
“UPDATE;” wait
until it’s counted
“100” and you
see “Updated
Successful.”

4. Update logo:

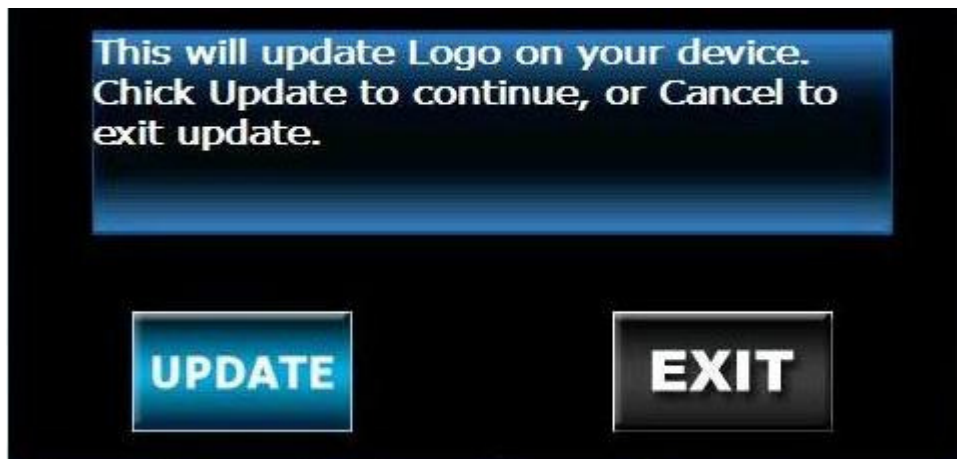
“Update Logo” can help you change the start-up picture.



GPS Navigation Box

To change start-up picture, please follow the steps:

- a. prepare 7 pictures, 24bit bmp file, containing following resolution: 320x240, 400x234, 480x234, 480x272, 640x480, 800x480, 640x240.
- b. The file names of 7 pictures have to be like following, consistent with the resolution:
logo320240.bmp
logo400234.bmp
logo480234.bmp
logo480272.bmp
logo640480.bmp
logo800480.bmp
logo640240.bmp
- c. Put the 7 pictures you prepared into SD card root, insert WP9200, and click “UPDATE,” then your start-up picture is updated. Please restart WP9200 to see.



GPS Navigation Box

5. Shortcut to Menu On:

If “Shortcut to Menu On” is selected, it means when WP9200 is navigating in the map, you can access main menu with pressing right bottom corner of your touch panel for more than 2 seconds. And when you access main menu, navigating will keep going.



Main Menu III



GPS Navigation Box



3G device (Optional)



Setting page of Wireless (Optional)



Select Browser to surf the Internet (Optional)



back to last page



Check System Time



Gyro system access (Optional)



Tracking system access (Optional)

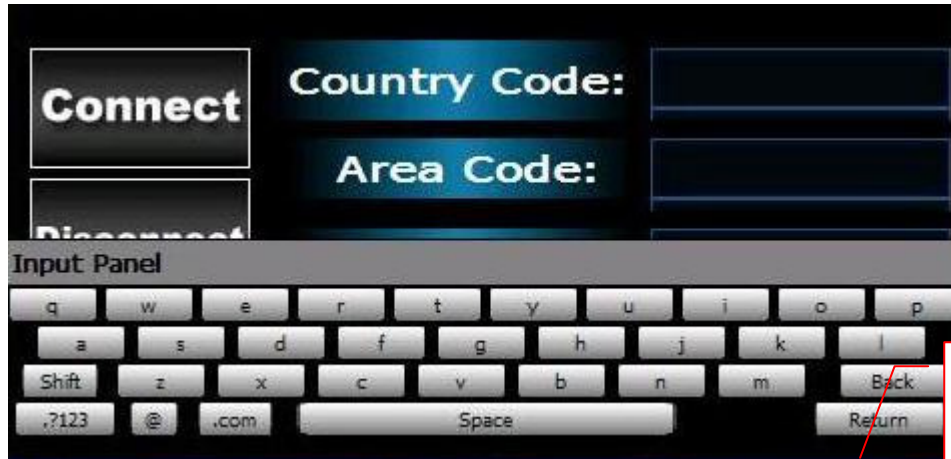


to next page

GPS Navigation Box



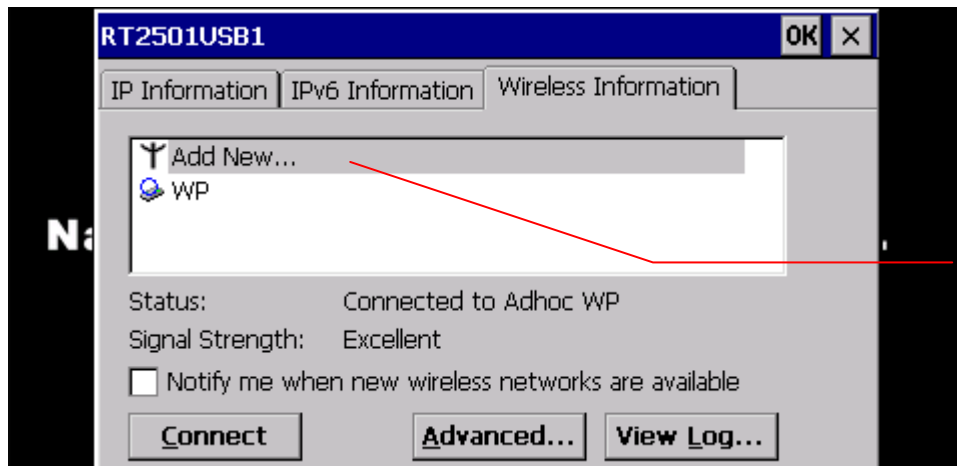
3G



Use Input Panel to key in the data



Wireless



Click Here to Add New Wireless network

GPS Navigation Box

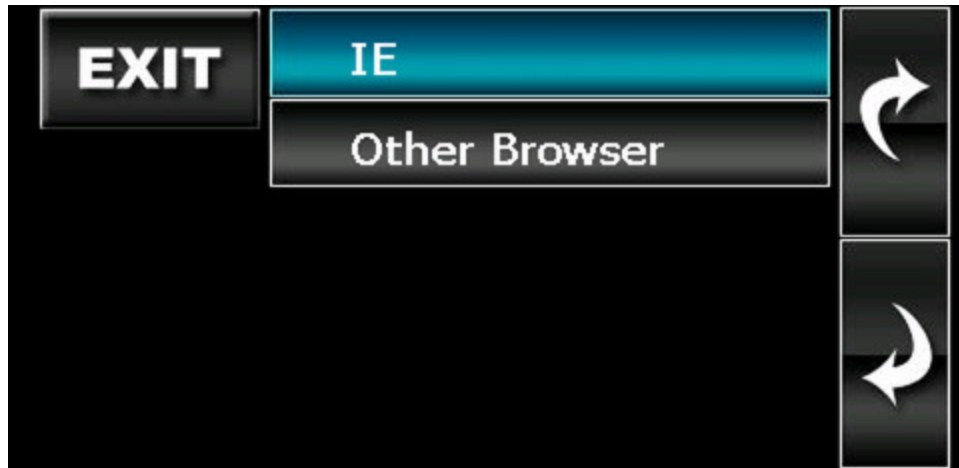


After finishing the setting of Wireless Network, please select the network you need and "Connect."

GPS Navigation Box



IE

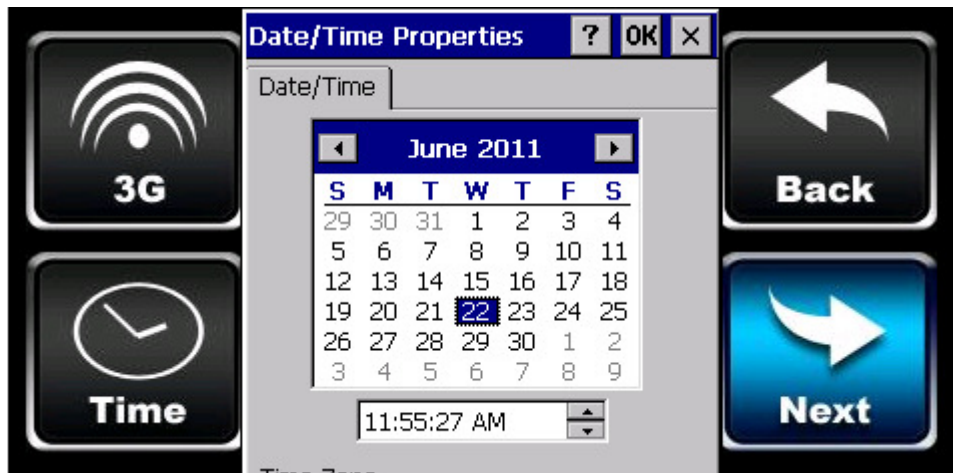


Select the browser with which you want to surf the Internet.

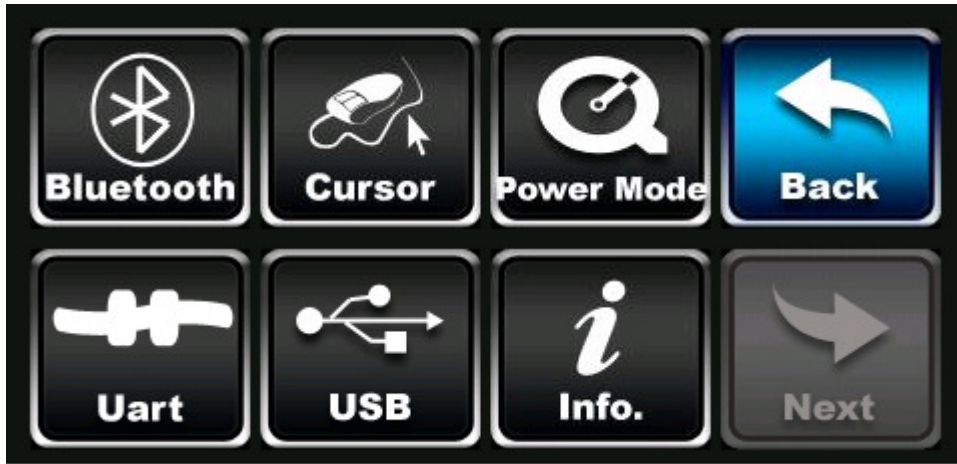


Time

Select correct zone, date, and time



Main Menu IV



Bluetooth system access (Optional)



Cursor Hide



Choose Power Mode for system



back to last page



Choose UART connecting device for system

GPS Navigation Box



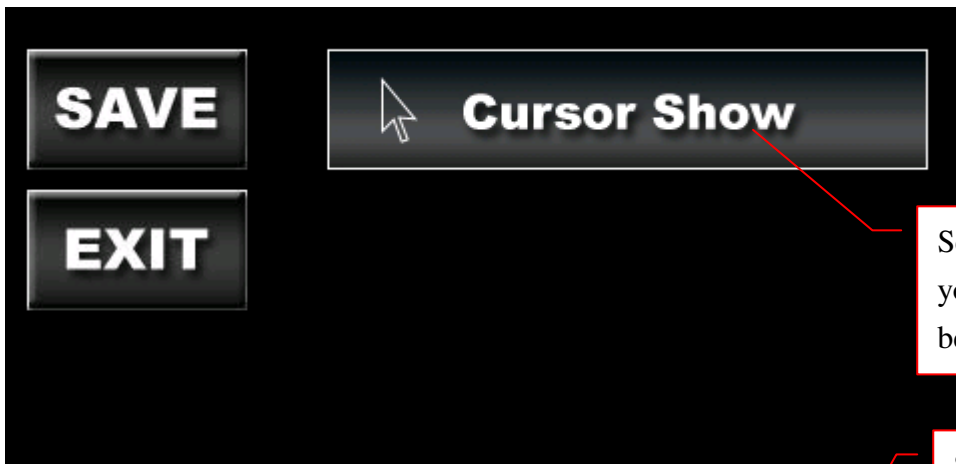
USB device



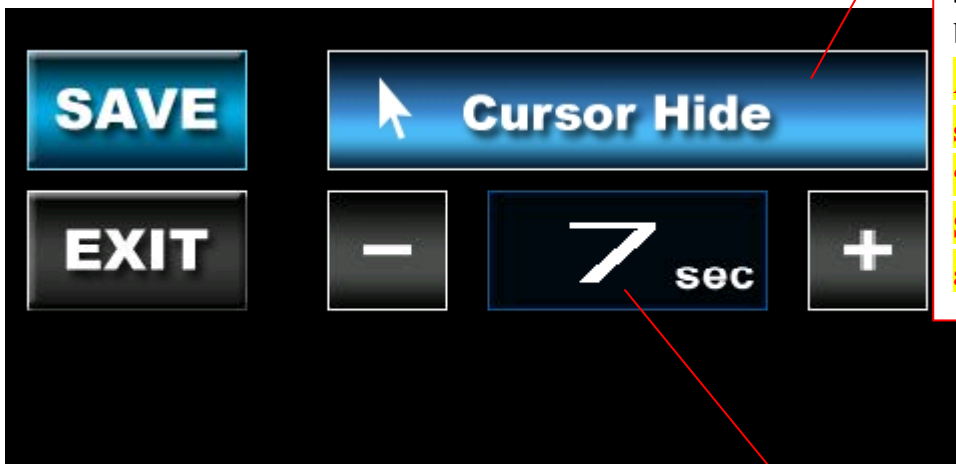
Check information of system



Cursor



Select "Cursor Show" if you would like cursor to be visible all the time.



Select "Cursor hide" if you would like cursor to be invisible forever.

After "Cursor hide" is selected, you need a "LCD92.INF" file in SD card to have cursor appear again.

Press "+" and "-" to set up the seconds you want cursor to disappear when there is no operation.

GPS Navigation Box



Power Mode

Select Power Mode for device:



Reboot Mode: GPS back up only; once you restart WP9200, GPS re-positions, and navigation restarts.

Suspend 1 Mode: When you restart WP9200, navigation starts at where you turn off WP9200.

P.S.: Suspend 1 Mode needs lots of power consumption when you turn off WP9200; thus, it could lead car battery to run out of power if you leave your car not started for too long.

Suspend 2 Mode: TBD

Related Time Setting: TBD

GPS Navigation Box



UART

Select UART connecting device and save.

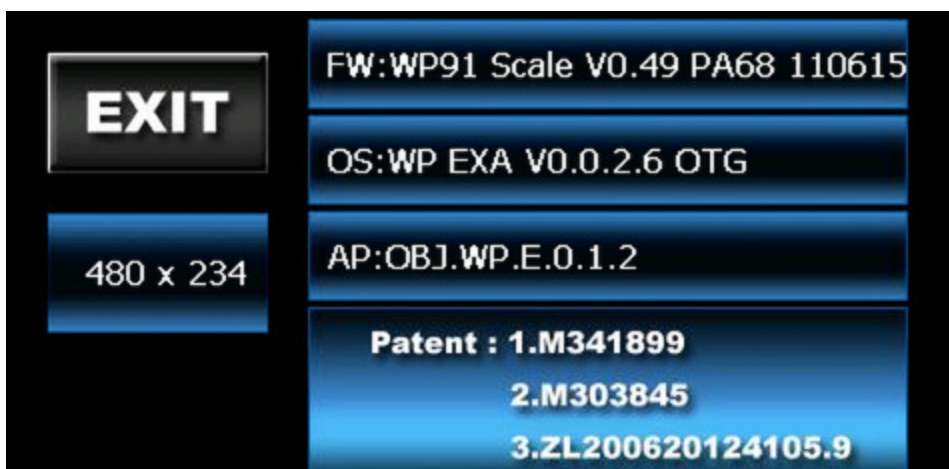


If you only have 1 device for Uart port, and didn't purchase "2-port Uart cable (optional)," please select your device on "UART A." If you have purchased "2-port Uart cable," please select correct device according which port (A or B) you connected to the device.



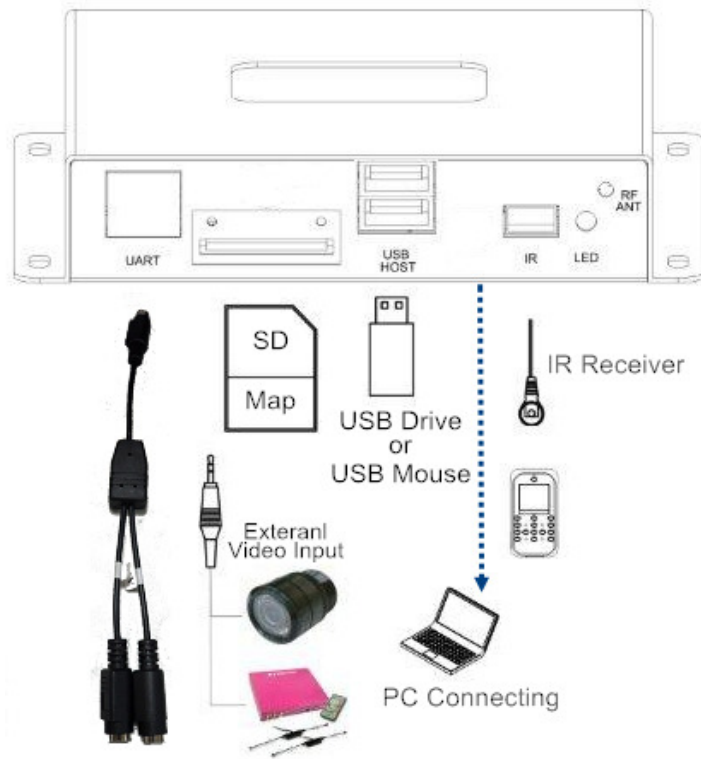
Info.

Check Firmware and OS version.

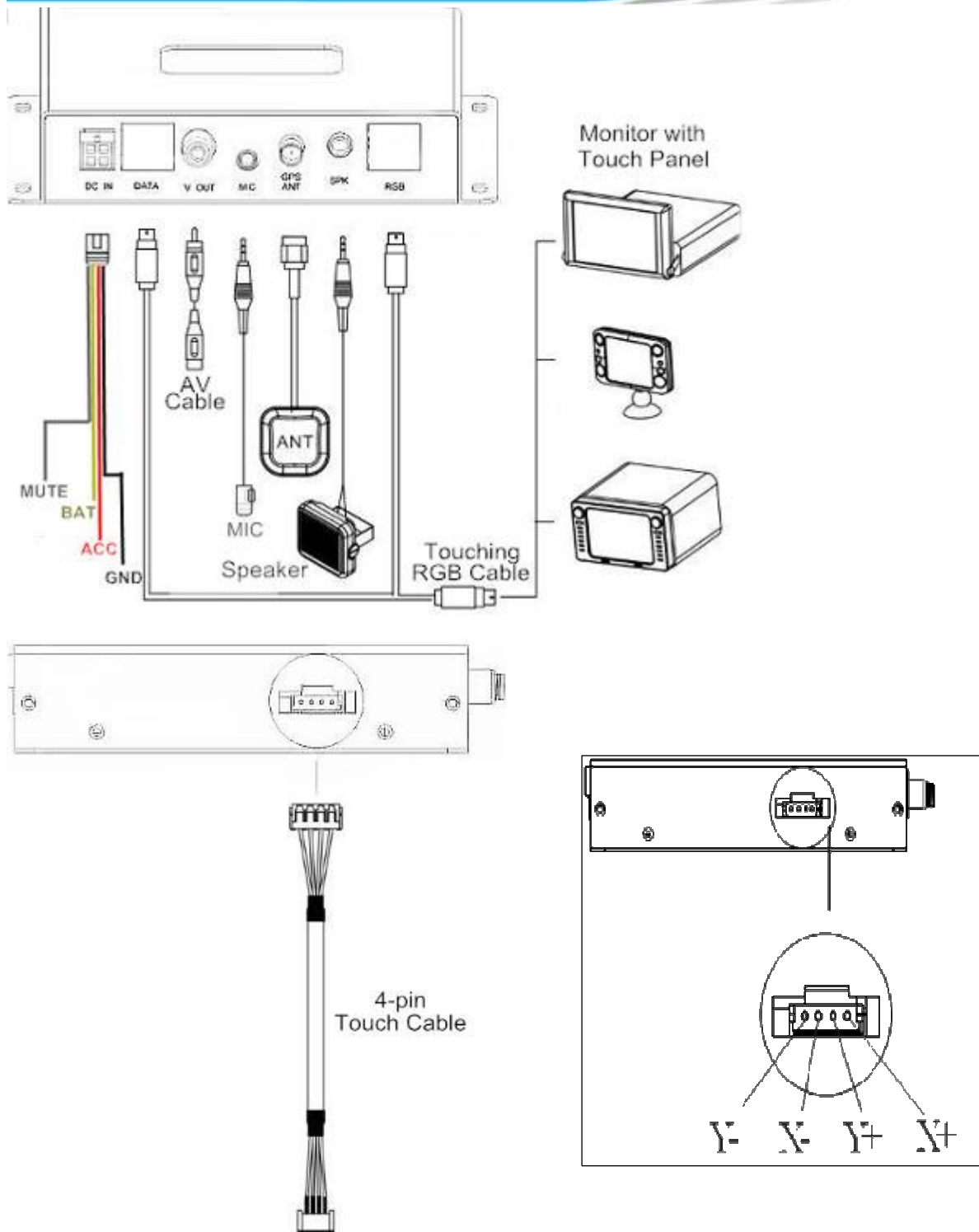


GPS Navigation Box

Installation



GPS Navigation Box



GPS Navigation Box

How to install the navigation box to your vehicle:

1. Plug the Map SD card into the navigation box.
2. Connect port “DC IN” (Navigation Box) with power cable; on power cable, ACC to Car ACC, BAT to Car battery, GND to ground, and MUTE to mute wire from monitor.

Note: please DON'T connect BAT and ACC together.

3. Connect GPS antenna, and put it where you can receive GPS signal well.
4. Link RGB (9 pin) cable, Data (8 pin) or AV cable to your monitor and use USB mouse to select the right panel.

Note: on RGB cable, you could see PIN 1 and PIN 2,

PIN 1=external navigation mute

PIN 2=rear camera trigger

5. If you have touch screen, connect 4-pin touch cable to the 4-pin hole on the side of navigation box.

Note: if you couldn't see any image after you link RGB cable to the monitor, please proceed the following steps:

1. **Make sure that you connect AV cable well and USB mouse to adjust panel setting and try again.**
2. **Enter your SD card with PC and find a file called, “LCD92.inf.” Then, key in the right “resolution” and “panel,” save and insert SD card to WP9200 again.**

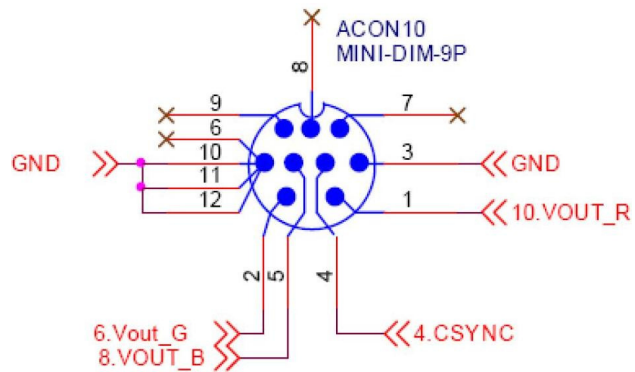
External accessories connecting:

- A1. SPK port: for eternal speaker.
- A2. UART port: for TMC, Bluetooth, Radar Detector, or Vehicle tracker device.
- A3. USB HOST port: for USB mouse, Gyroscope or Wireless Network device.
- A4. USB port: PC connecting.
- A5. IR port: for IR receiver or some RGB.
- A6. V IN port: for Digital TV box or Rear camera.

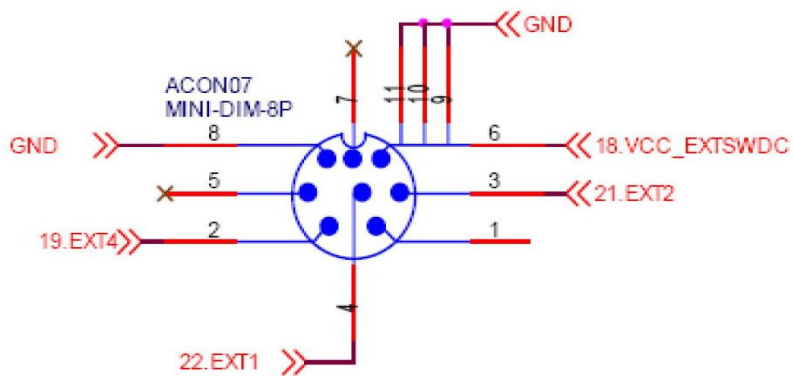
GPS Navigation Box

Pin definition:

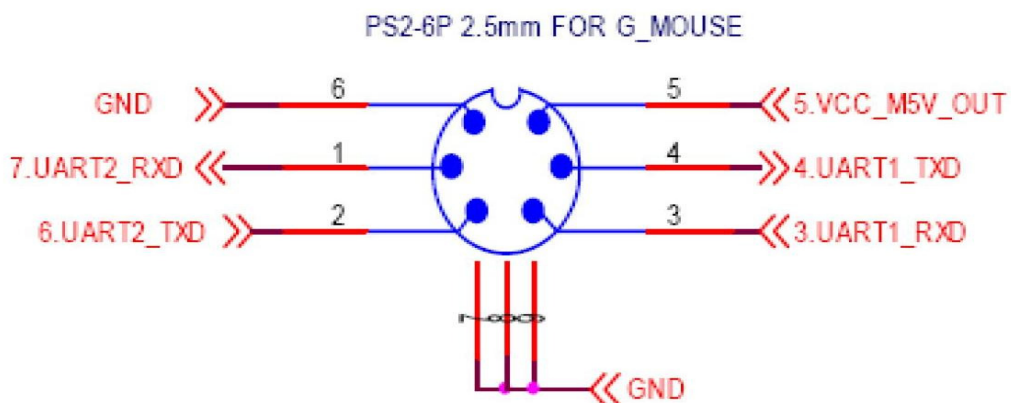
RGB:



Data:

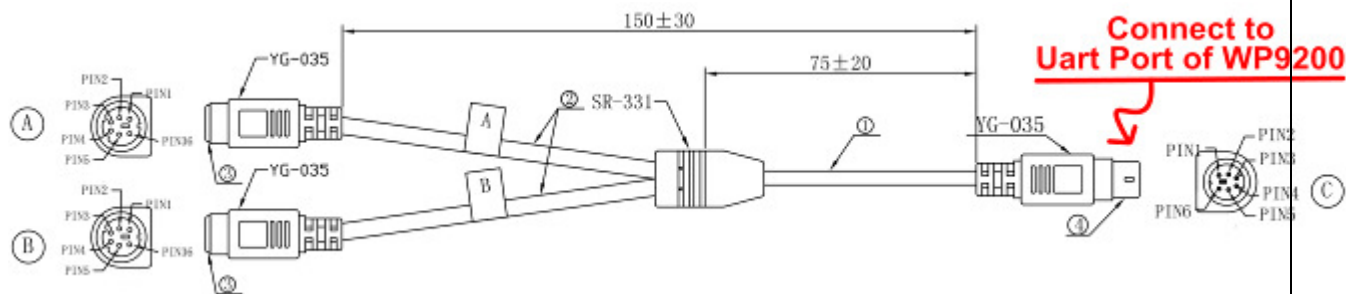


Uart:



GPS Navigation Box

2-port Uart cable (optional):



	Ⓒ	Ⓑ	Ⓐ
ACC	PIN6	PIN6	PIN6
RXD3	PIN5	PIN5	
TXD	PIN4		PIN3
TXD3	PIN3	PIN3	
RXD	PIN2		PIN5
GND	PIN1	PIN1	PIN1

Reset WP9200 with LCD92.INF:

When wrong resolution is selected, the image will disappear or become unstable.

Under this situation, please follow below steps to reset WP9200:

1. Get the file, "LCD92.inf" from your distributor
2. put the file into an empty 2G SanDisk SD card
3. insert the SD card into WP9200, and restart WP9200 3 to 5 times.

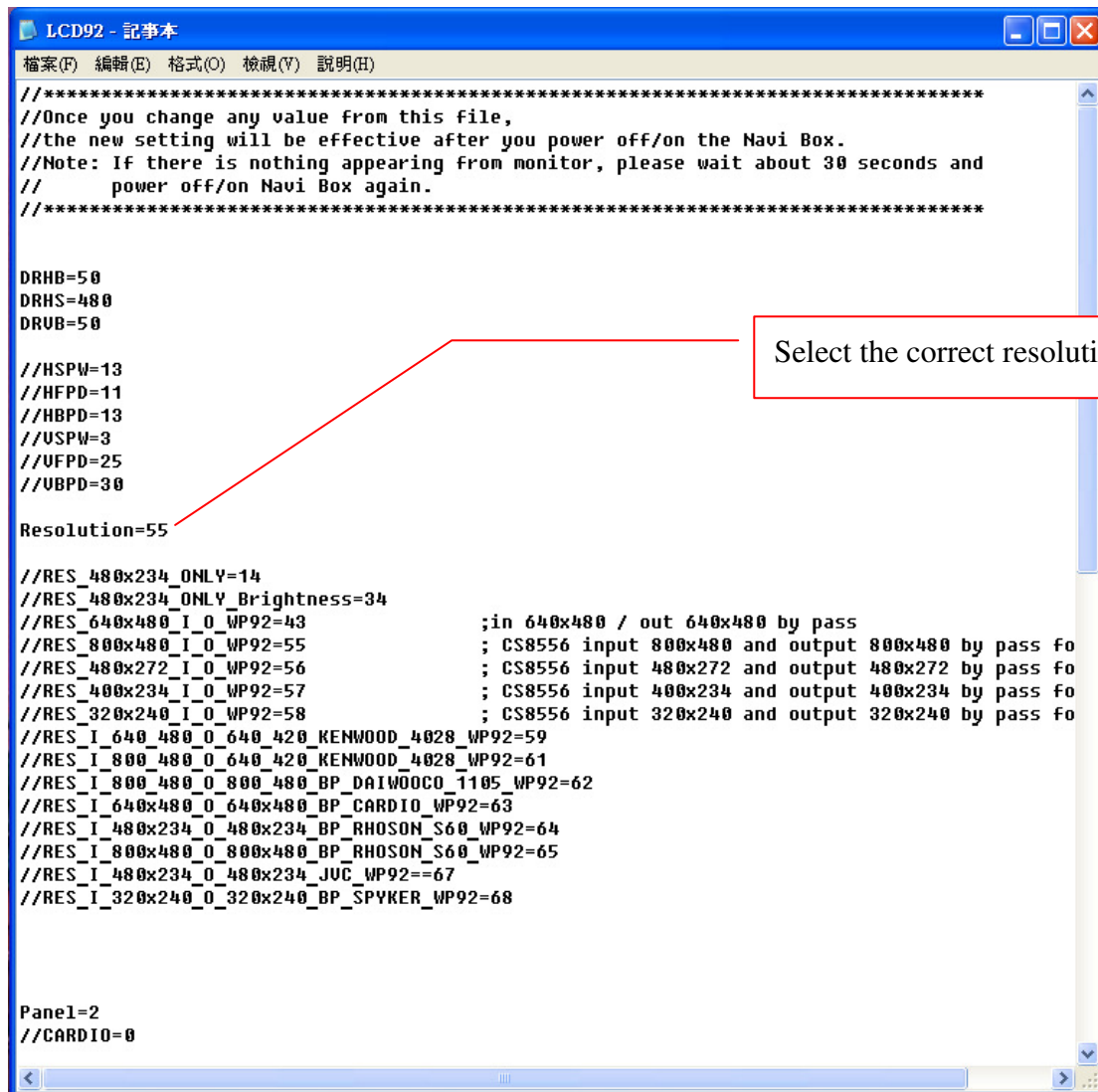
Note: If there is nothing appearing from monitor, please wait about 30 seconds and power off/on WP9200 again.

4. then you should have stable image again, please take out SD card and delete the file.

Note: As long as the "LCD92.inf" file existed in SD card with WP9200, it will erase the previous resolution setting.

GPS Navigation Box

LCD92.inf file:



```
*****
//Once you change any value from this file,
//the new setting will be effective after you power off/on the Navi Box.
//Note: If there is nothing appearing from monitor, please wait about 30 seconds and
//      power off/on Navi Box again.
*****

DRHB=50
DRHS=480
DRUB=50

//HSPW=13
//HFPD=11
//HBPD=13
//USPW=3
//VFPD=25
//UBPD=30

Resolution=55

//RES_480x234_ONLY=14
//RES_480x234_ONLY_Brightness=34
//RES_640x480_I_0_WP92=43           ;in 640x480 / out 640x480 by pass
//RES_800x480_I_0_WP92=55           ; CS8556 input 800x480 and output 800x480 by pass fo
//RES_480x272_I_0_WP92=56           ; CS8556 input 480x272 and output 480x272 by pass fo
//RES_400x234_I_0_WP92=57           ; CS8556 input 400x234 and output 400x234 by pass fo
//RES_320x240_I_0_WP92=58           ; CS8556 input 320x240 and output 320x240 by pass fo
//RES_I_640_480_0_640_420_KENWOOD_4028_WP92=59
//RES_I_800_480_0_640_420_KENWOOD_4028_WP92=61
//RES_I_800_480_0_800_480_BP_DAIWOODCO_1105_WP92=62
//RES_I_640x480_0_640x480_BP_CARDIO_WP92=63
//RES_I_480x234_0_480x234_BP_RHOSON_S60_WP92=64
//RES_I_800x480_0_800x480_BP_RHOSON_S60_WP92=65
//RES_I_480x234_0_480x234_JUC_WP92==67
//RES_I_320x240_0_320x240_BP_SPYKER_WP92=68

Panel=2
//CARDIO=0
```

Select the correct resolution and save.