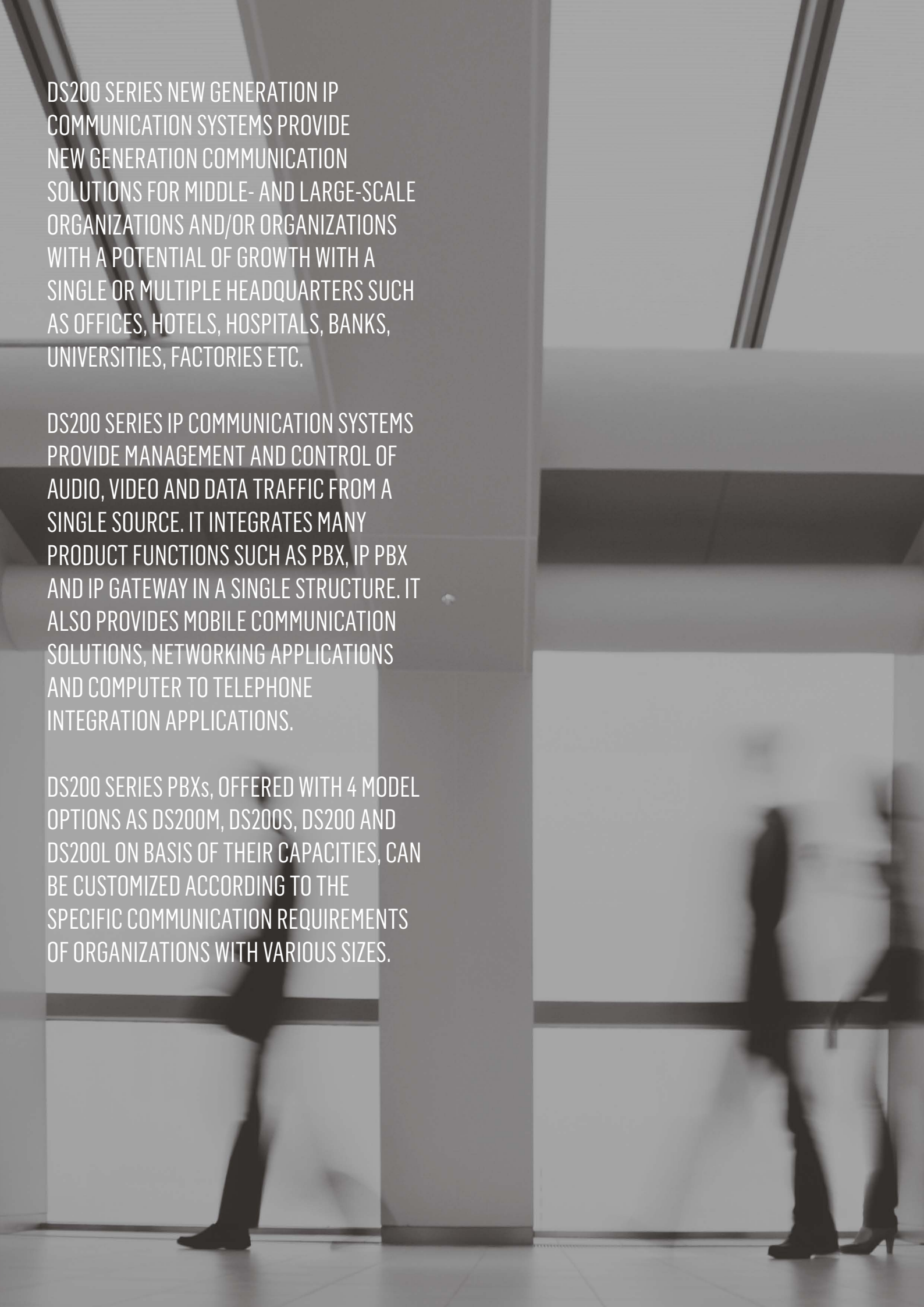




KAREL

NEW GENERATION IP COMMUNICATION SYSTEMS

KAREL DS200 SERIES



DS200 SERIES NEW GENERATION IP COMMUNICATION SYSTEMS PROVIDE NEW GENERATION COMMUNICATION SOLUTIONS FOR MIDDLE- AND LARGE-SCALE ORGANIZATIONS AND/OR ORGANIZATIONS WITH A POTENTIAL OF GROWTH WITH A SINGLE OR MULTIPLE HEADQUARTERS SUCH AS OFFICES, HOTELS, HOSPITALS, BANKS, UNIVERSITIES, FACTORIES ETC.

DS200 SERIES IP COMMUNICATION SYSTEMS PROVIDE MANAGEMENT AND CONTROL OF AUDIO, VIDEO AND DATA TRAFFIC FROM A SINGLE SOURCE. IT INTEGRATES MANY PRODUCT FUNCTIONS SUCH AS PBX, IP PBX AND IP GATEWAY IN A SINGLE STRUCTURE. IT ALSO PROVIDES MOBILE COMMUNICATION SOLUTIONS, NETWORKING APPLICATIONS AND COMPUTER TO TELEPHONE INTEGRATION APPLICATIONS.

DS200 SERIES PBXs, OFFERED WITH 4 MODEL OPTIONS AS DS200M, DS200S, DS200 AND DS200L ON BASIS OF THEIR CAPACITIES, CAN BE CUSTOMIZED ACCORDING TO THE SPECIFIC COMMUNICATION REQUIREMENTS OF ORGANIZATIONS WITH VARIOUS SIZES.



DS200 SERIES NEW GENERATION IP COMMUNICATION SYSTEMS PROVIDE MOBILITY IN BUSINESS LIFE.

IT FACILITATES THE ACCESS TO THE MOBILE EMPLOYEES OF THE ORGANIZATION.

FLEXIBLE CAPACITY AND PERIPHERAL OPTIONS

DS200 series IP communication systems provide the opportunity to create unified systems and to expand since multiple PBXs can be operated as a single unit.

DS200 series IP communication systems are based on Linux and designed with distributed processor architecture. Thus, the module-based operations are performed more quickly and safely. Optional redundant Central CPU and central power supply unit of the system maximizes the system safety.

FLEXIBILITY OF PERIPHERALS

DS200 series IP communication systems support analog, digital, SIP, proprietary IP terminals and new generation audio compression algorithms in extensions. Thus, they provide the flexibility to use different peripherals.

Peripherals that can be used with DS200 series IP communication systems:

- Standard and Karel SIP Phones
Any IP phones and IP softphones that support SIP signalling protocol
- Video SIP Phones
- WiFi SIP Phones
WiFi compliant phones that support SIP signalling protocol
- Karel IP phones
IP phones that support Karel's proprietary advanced extension features

IP APPLICATIONS

- Karel Digital Phones
Digital phones that support Karel's proprietary advanced extension features
- IP DECT System
IP DECT base stations and IP DECT handsets that support SIP signalling protocol
- Other terminals with SIP support

IP COMMUNICATION APPLICATIONS

Thanks to the IP communication applications, extensions can communicate continuously with access units that can communicate over IP such as IP phones, IP softphones, WiFi phones or VoIP enabled smart phones etc. from any point and at any time.

REMOTE OFFICE APPLICATIONS

In businesses with multiple locations, any extension in a branch office can get connected to the exchange in the head office directly over internet with various IP terminals without any additional equipment. Extensions in different locations can call each other with their extension numbers. This provides convenience and economy in communications

DS200 series IP communication systems operate interactively with other SIP and H.323 compliant devices (PBX, gateway etc.) and provide cost-effective and high quality communications over the data networks that are already available or that will be established in the future.



DS200M



DS200S



DS200

UNIFIED COMMUNICATION APPLICATIONS

VIDEO CALL

All IP extensions connected to DS200 series PBXs can make video calls between themselves or through external IP lines using videophones, special sets or smart phones.

MOBILITY

DS200 series IP communication systems provide mobility in business life. They also facilitate the access to the mobile employees of the organization.

- IP DECT base stations provide wireless communication at every point of the coverage after being placed in proper locations where company data network or internet access is available.
- DS200 series IP communication systems support WiFi structure. WiFi phones with SIP support can be used for wireless communication without any additional investment by using "Access Points" connected to the data network.

Smart mobile phones with SIP support can use system features by subscribing to the exchange over WiFi or 3G.

DS200 series IP communication systems provide unified communications applications such as voice-over-IP, fax-over-IP*, conference call, video call, monitoring presence, instant messaging, mobil applications, remote extensions and remote office.

PRESENCE

Presence allows other extensions to see whether the extension is available, busy, online/offline and the special status that is set by the person himself/herself with a text entry. Thanks to the Presence feature, it becomes possible to access the relevant person with the quickest and most suitable method.

INSTANT MESSAGING

Extensions can communicate with each other instantly in written form with instant messaging feature; thus, the communication is performed very quickly and can be recorded.

NETWORKING

DS200 series IP communication systems can operate with SIP/H.323 IP external line interfaces or interfaces with ISDN QSIG support as a single communication system when more than one communication system shall be used together or in different locations. Thanks to the uniform numbering plan, extensions in different locations can call each other with their extension numbers. Frequently used PBX features such as caller ID, least cost routing, routing authorization, alternative routing, call forwarding and call transfer are supported in the network.

DS200 SERIES IP COMMUNICATION SYSTEMS CAN DIRECT THE CALLS TO THE ROUTE WITH THE LOWEST COST THANKS TO THE LEAST COST ROUTING FEATURE. THIS PROVIDES A GREAT SAVING IN THE COMMUNICATION COSTS THAT TAKES AN IMPORTANT PLACE IN THE OPERATIONAL COSTS.

SOLUTIONS THAT PROVIDE CONVENIENCE AND ECONOMY

AUTOMATIC CALL DISTRIBUTION AND VOICEMAIL

EVM200, the automatic call greeting, call distribution (ACD) and voicemail module, distributes the incoming calls to the called extension or department interactively without the need for the intervention of an operator. Voicemail feature allows other extensions or external callers to leave a message for the extension they have called. Extensions can access these messages from another place.

DS200 series IP communication systems support 8 EVM200 modules in total, and each module has 4 reading and 4 recording channels. System can reply to 32 calls simultaneously and its voicemail capacity can be increased to a value over 20 hours, which helps in increasing the efficiency of the organization. ACD application included in the software of DS200 series IP communication systems, provides 4 channel automatic call greeting and forwarding features when EVM200 is not used in the system. Thanks to the remotely manageable EVM200 and integrated ACD application, loading procedures such as auto attendant records, music on hold and etc are performed quickly and with a low cost.

COMPUTER TELEPHONY INTEGRATION

DS200 series IP communication systems are convenient thanks to the computer telephony integration (CTI) feature that integrates the telephony functions with available business applications. The server that supports the CTI applications is integrated to DS200 series IP communication systems. An individual PC/Server equipment is not required. DS200 Net-Console software allows using the advanced features of communication system for analog and digital extensions on the PCs.

CALL RECORD LISTING SOFTWARE

Call record listing software allows lowering the costs by keeping the communication expenses under control. DS200 series IP communication systems allows call charging by recording information of all calls, and with methods like detecting the credit and pole switching and rated virtual charging. Net-CM application allows transferring the call records to any PC on the network to be used for charging, reporting and various analyses. Web based Web-CM application allows access to call record lists of several PBXs from anywhere at any time, and taking reports specific to an extension. Also, the RS232 interface on the PBX allows printing of the call records with any serially connected printer.

LEAST COST ROUTING

DS200 series IP communication systems can direct the calls to the route with the lowest cost thanks to the least cost routing feature. This provides a great saving in the communication costs that takes an important place in the operational costs. Alternative route feature allows that the calls are made through other routes if they cannot be made through the first route preference. Particularly, routing the calls to IP operators over IP external lines provide a high level of saving in communication costs. DS200 series IP communication systems can be accessed remotely over an IP based network for management, programming or maintenance purposes. Thus, the workload of the technical service, time spent for the installations and the costs that occur accordingly are decreased.

DS200 SERIES IP COMMUNICATION SYSTEMS PROVIDE PERFECT AUDIO QUALITY WITH STANDARD TERMINALS SUPPORTING HD AUDIO QUALITY AND KAREL HD TERMINALS.

CONFERENCE

DS200L and DS200 contained amongst the DS200 series IP communication systems, provide a conference for 32 users, and DS200S and DS200M provide a conference for 3 users simultaneously. This platform allows making conference calls with participants from remote locations and thus reduces the costs and time spent for meetings.

IP FAX SUPPORT

T.38 Fax-Over-IP support allows high-quality facsimile transmissions over the IP lines and eliminates the requirement of using PSTN lines.

ADVANCED CENTRAL PHONEBOOK

Users can enter information to the common memory on DS200 series IP communication systems. Access to common memory, which is available to all extensions, can be restricted on the basis of authorization levels. Users can easily search PBX phonebook and central phonebook using names and T9 algorithm from their special phone sets. Phonebooks can be uploaded to an external server thanks to this application that supports LDAP protocol. Thus, phone sets with LDAP support can use this feature. In this way, company's phonebook can be directly used by the extensions thanks to the LDAP integration.

AUDIO QUALITY AND SECURITY

DS200 series IP communication systems have advanced audio algorithms. Thus, perfect audio quality is obtained with standard terminals with HD audio quality support and Karel HD terminals.

PBX has the capability to detect package losses caused by external conditions and to divert the communication to an alternative route (e.g. PSTN) until satisfactory quality is obtained in order to provide a stable audio quality. This ensures uninterrupted communication and stable audio quality in VoIP applications.

Alternative route definitions can be performed according to the connection or quality of service or both for VoIP external lines. If the same network infrastructure is used for both audio and data communication, QoS support provided by DS200 series IP communication systems ensures continuity of the audio quality by monitoring the performance on the network and taking necessary precautions. Standard SRTP/TLS encryption ensures high level of security in audio communications without the need for VPN installation. DS200 series IP communication systems, which allows management and control of audio, video and data traffic from a single source, provide safe, uninterrupted VoIP communication with high audio quality without the need for VPN connection.



MANAGEMENT AND PROGRAMMING

DS200 series IP communication systems can be accessed remotely over an IP based network for management, programming or maintenance purposes. Thus, the workload of the technical service, time spent for the installations and the costs that occur accordingly are decreased.

MULTI PBX PROGRAMMER

Several systems at the same location or at different location may be remotely managed and updated from a single point and over a single interface.

AUTOMATIC BACK-UP MANAGER

DS200 series IP communication systems can be backed up automatically from any location by specifying the start time.

ALARM SOFTWARE

Status of all DS200 series IP communication systems installed in the communication network can be monitored from a single point. Marking DS200 IP series IP communication systems on a map allows convenient monitoring of regional alarms. Warnings are displayed visually and audibly during the alarm and system manager is informed by e-mail and SMS.

FIREWALL

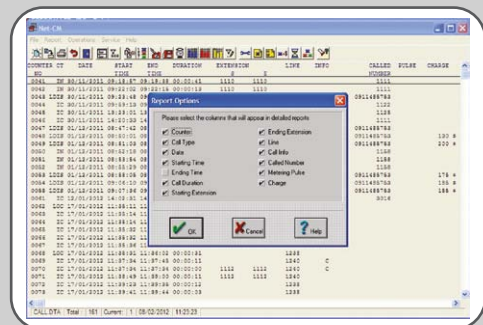
Firewall integrated to the PBX ensures safer IP communication. Packages other than the specified IPs, MAC addresses or ports may be blocked.

SNMP (Simple Network Management Protocol)

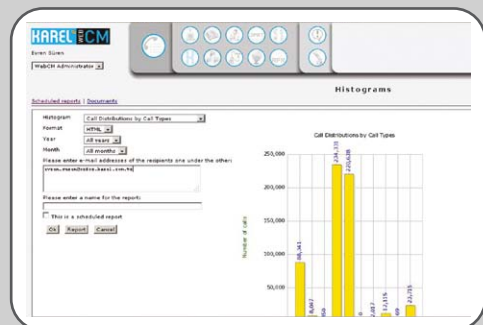
Internal SNMP application ensures management of multi-location systems from a single point and that many settings are performed rapidly with standard SNMP software without any need for special applications.

MAINTENANCE

Software on the central processor may be updated by different connection methods such as TFTP and SNMP.



NET CM



WEB CM

PHONE SETS

	NT10D	NT30D	ST30	ST26	FT20
GENERAL FEATURES	DIGITAL PHONE SETS	OPERATOR/ SPECIAL PHONE SET	OPERATOR/ SPECIAL PHONE SET	OPERATOR/ SPECIAL PHONE SET	OPERATOR/ SPECIAL PHONE SET
Display Type	2 rows x 20 characters	8 rows x 24 characters 160x100 pixels graphic	8 rows x 24 characters 160x100 pixels 4" graphic display	4 rows x 20 characters LCD	4 rows x 20 characters LCD
Operator Headset Connectivity	-	-	-	•	•
Wall Installation	-	•	-	-	-
Adjustable Display Angle	-	•	•	-	-
Adjustable Body Angle	-	•	-	-	-
Headphone Support	-	•	•	•	•
PHONE FEATURES					
Handsfree	Half Dublex	Full Dublex	Half Dublex	Half Dublex	Half Dublex
Bluetooth	-	Optional	Optional	-	-
Phonebook Capacity	50	120	40	50	50
Displaying Names of Callers Recorded in the Phonebook	•	•	•	•	•
Calling with Name from the Phonebook	•	•	•	•	•
Integration with Net Console CTI Application	•	•	•	•	•
USER INTERFACE					
Display Illumination	-	•	•	-	-
Incoming Call Lamp	•	•	-	-	-
Volume Control Keys	Handsfree, muting outgoing audio, handsfree volume up and down	Handsfree, muting outgoing audio, handsfree volume up and down, headphone	Handsfree, muting outgoing audio, handsfree volume up and down	Handsfree, muting outgoing audio, handsfree volume up and down	Handsfree, muting outgoing audio, handsfree volume up and down
Special Function Keys	Voicemail, redial	Park, menu, phonebook, call records, function, voicemail, redial, conference, transfer	Park, phonebook, menu, transfer, flash and redial	Park, phonebook, menu, transfer, flash and redial	Park, phonebook, menu, transfer, flash and redial
Number of Fast Access Keys	8	-	16	16	16
Number of Soft Keys	4	4	4	4	4
Navigator Key	-	•	-	-	-
Message Warning Light	•	•	-	-	-
Handsfree Warning Light	•	•	•	•	•
Headphone Light	-	•	-	-	-
DSS Support	-	Optional (max. 5 DSS)	Optional (max. 1 DSS)	Optional (max. 1 DSS)	Optional
DSS	-	24 Keys	28 Keys	28 Keys	28 Keys
Supported DSSs	-	DSS3L-24, DSS3K-24	DSS25-28	DSS25-28	DSS25-28, DSS20-00 Busyness Panel
Color Alternatives	Black / White	Black / White	Black	Black	Black



NT10D



NT30D



ST30



ST26



FT20

IP PHONES

IP111 IP112 IP116 IP118 NT32I NT42I NT62I

GENERAL FEATURES

Display Type	3 rows LCD (2 rows x 15 characters + 1 icon row)	132X64 gray toned (4 levels) LCD	320x160 gray toned (4 levels) LCD	4.3" TFT-LCD, 16.7 M Colors	160X100 gray toned (4 levels) LCD	480X272 24 Bit Color touchscreen TFT display	480X272 24 Bit Color touchscreen TFT display
Ethernet Port	2x (LAN/WAN)	2x (LAN/WAN)	2x (LAN/WAN)	2x Gbit (LAN/WAN)	2x (LAN/WAN)	2x (LAN/WAN)	2x (LAN/WAN)
PoE	Optional	Optional	Optional	Optional	Optional	Optional	Optional
Operator Headset Connectivity	•	•	•	•	•	•	•
DSS Module Addition	-	-	•	•	•	•	-
Bluetooth	-	-	-	-	Optional	Optional	Optional
PSTN Output	-	-	-	-	-	-	Optional

USER INTERFACE

Color Display	-	-	-	•	-	•	•
Touchscreen Display	-	-	-	-	-	•	•
Display Illumination	•	•	•	•	•	•	•
Volume Control Keys	•	•	•	•	•	•	•
Integrated DSS Keys	-	-	10	10	6	-	-
Message Warning Light	•	•	•	•	•	•	•

PHONE FEATURES

Protocol	SIP v1, SIP v2	SIP v1, SIP v2	SIP v1, SIP v2	SIP v1, SIP v2	SIP v1, SIP v2	SIP v1, SIP v2	SIP v2.0 (RFC3261)
SIP Accounts	2	3	6	6	3	3	10
Handsfree	Full Duplex	Full Duplex	Full Duplex	Full Duplex	Full Duplex	Full Duplex	Full Duplex
Phonebook Capacity	300	300	300	1000	128	128	128
Export/Import Phonebook	•	•	•	•	•	•	•
Black List	•	•	•	•	-	•	-
Installing Additional Ring Tones	•	•	•	•	•	•	•
Installing Logo the LCD	•	•	•	•	•	•	•
Automatic Update	•	•	•	•	•	•	•
WAN Static IP/DHCP/PPPoE	•	•	•	•	Static IP/DHCP	Static IP/DHCP	Static IP/DHCP
TLS, SIPS, SRTP	•	•	•	•	-	-	-
Web Interface	HTTP/HTTPS	HTTP/HTTPS	HTTP/HTTPS	HTTP/HTTPS	HTTP	HTTP	HTTP
xML Phonebook (Central Phonebook)	-	•	•	•	-	-	-
BLA/BLF, Voicemail, SMS	Voicemail	BLF, Voicemail, SMS	BLA/BLF, Voicemail, SMS	BLA/BLF, Voicemail, SMS	BLF, Voicemail	BLF, Voicemail	BLF, Voicemail
Hotdesking	-	•	•	•	-	-	-
Proprietary Features	-	-	-	-	•	•	•

AUDIO

HD Audio Quality	•	•	•	•	•	•	•
Codecs	G.722, G.711A, G.711U, G723, G729AB, ILBC	G.722, G.711A, G.711U, G723, G729AB, ILBC	G.722, G.711A, G.711U, G723, G729AB, ILBC	G.722, G.711A, G.711U, G723, G729AB, ILBC	G.722, G.711A, G.711U, G723, G729AB	G.711, G.723, G.726, G729, G722.2, ILBC, G.722	G.711, G.723, G.726, G729, ILBC, G722, SPEEX
QoS	802.1p/Q, TOS/DSCP	802.1p/Q, TOS/DSCP	802.1p/Q, TOS/DSCP	802.1p/Q, TOS/DSCP	802.1p/Q, TOS/DSCP	802.1p/Q, TOS/DSCP	802.1p/Q, TOS/DSCP

VIDEO

Camera Head	-	-	-	-	-	-	Moveable Camera Head
Video Camera Features	-	-	-	-	-	-	Adjustable 300K pixel CMOS
Analog Video Output	-	-	-	-	-	-	•
Video Codecs	-	-	-	-	-	-	H.263, H.263+, H.264
Color Alternatives	Black	Black	Black	Black	Black / White	Black / White	Black / White



IP111



IP112



IP116



IP118



NT32I



NT42I



NT62I

TECHNICAL SPECIFICATIONS

CAPACITY

DS200M: 144 TDM port, 750 IP extensions, 100 IP external lines

DS200S: 224 TDM port, 750 IP extensions, 100 IP external lines

DS200: 1344 TDM port, 750 IP extensions, 100 IP external lines

DS200L: 32000 TDM port, 5000 IP extensions, 1000 IP external lines

Analog Extension Boards:

EX200 (0/16C), Analog Extension Module for 16 extensions with Caller ID

EX200 (0/16R), Analog Extension Module for 16 extensions with Caller ID, metering pulse generation, distant extension feeding, automatic testing

Analog External Line Board:

EX200 (8+/0), Analog Line Module for 8 lines with optional Caller ID

Digital Extension Boards:

EX200 (0/8KoU), Digital Extension Module for 8 proprietary digital phones

EX200 (0/16KoU), Digital Extension Module for 16 proprietary digital phones

LB Extension Board:

EX200 (0/8LB), Local Battery Extension Module for 8 local battery phones

ISDN BRI Boards:

EX200 (0/8S0), ISDN BRI Extension Module for 8 ISDN-BRI extensions

EX200 (8T0/0), ISDN BRI Line Module for 8 ISDN-BRI lines

ISDN PRI/R2 External Line Boards:

EX200 (1S2/0), ISDN PRI Module for E1-PRI interface

EX200 (1S2-R2/0), Combo E1 Module for either E1-PRI or E1-R2 interface

E&M External Line Boards:

EX200 (4E&M/0), E&M Line Module for 4 E&M lines

EX200 (8E&M/0), E&M Line Module for 8 E&M lines

PLC External Line Board:

EX200 (4PLC/0), PLC Line Module for 4 Power Line Communication

TWT External Line Board:

EX200 (4TWT/0), TWT Line Module for 4 Two Wire Trunk Lines

PROCESSOR

Stored program control (SPC)

Distributed processor architecture

High system reliability

Optional backup CPU (only for DS200 and DS200L)

SWITCHING

IP/TDM/PCM

EXTENSION INTERFACE

Analog extension interface

Advanced features such as generating Caller ID information, generating charging signal, automatic gain adjustment, automatic line control, polarity reversal

EURO ISDN compliant S0 interface

Two-wire digital extension interface

40 VDC supply voltage for ISDN or digital extension lines IP/SIP user

EXTERNAL LINE INTERFACES

Analog external line interface

Advanced features such as DP/DTMF signalling, detecting Caller ID information, detecting 12/16 KHz charging signal, polarity reversal detection

EURO ISDN compliant T0 interface

EURO ISDN compliant S2 interface

IP/VoIP Ethernet interface (H.323, SIP)

E&M

TWT

E1-R2

OTHER INTERFACES

PC (Ethernet, RS232), 2 external relays, external music interface

AMBIENT CONDITIONS

5 to 40 C° temperature, 10% to 80% humidity

* Please contact our sales department for detailed information about these features.

** Karel's right to make changes on the features specified in this booklet is reserved.

USER FEATURES

EXTENSION SERVICES

- Presence
- Instant messaging
- Defining same number for multiple phones
- Integrated digital FCT
- GSM integration with Bluetooth
- Calling with customer code
- Automatic calling
- Music on hold
- Busy queuing
- Call back option
- Call hold and obtaining information
- Call parking and returning to a parked call
- Call hunting
- Call transfer
- Executive-Secretary feature
- Conference
- Conference Room
- Do not disturb
- Door relay activation
- Call forwarding
- Remote call forwarding
- Extension with headphone
- Emergency line
- Intervention
- Automatic or manual external line selection
- Redialing last number
- Putting through external lines
- Dropping an external line
- External line marked access
- Parallel ringing
- Phone lock
- Reminder and wake-up service
- Serial calling
- Volume setting
- Night guard code

HOTEL SERVICES

- Check-in and check-out
- Hotel room status query
- Hotel room extension identification
- Minibar account
- Location specification service
- Call authorization level
- Wake-up service (Group or individual)

CALL RECORD SERVICES

- Detailed call record list for extensions and groups
- Call reporting
- Credit signal detection
- Polarity reversal switching detection
- Entering the credit price
- Rate tables
- Automatic e-mailing of call records

SYSTEM SERVICES

- Backup CPU
- Backup Power Supply
- Remote access via IP network or modem
- Alarm software with automatic e-mailing
- Central or distributed architecture support
- Firewall
- T38 Fax over IP support*
- Scheduled backup
- Automatic external line holding
- Automatic system check
- Extension authorization levels
- Call restriction
- External line call duration
- Serial call transfer
- Equal load distribution for external lines
- Direct access to an extension
- Different ring cadences
- Equal load distribution for the operator
- Intervention authorization control
- External call forwarding
- Flexible numbering
- Automatic least cost routing (LCR)
- External line access groups
- Automatic external line control
- Music on hold
- Night service
- Extension groups
- Remote programming
- Selective line transfer to extension
- External line and extension connection in power failures
- System query
- Assigning a system administrator
- Tone and pulse assignment option
- Network applications
- Adjustable tone cadences
- Adjustable flashing time
- QSIG support

- IP CCTV integration support
- SNMP compatibility
- LDAP - Central phonebook support
- Mobile smart call back
- IP voice encryption

ISDN SERVICES

- Charging:
 - Start of call (AOC-S)
 - During call (AOC-O)
 - End of call (AOC-E)
- Calling line identification presentation (CLIP)
- Calling line identification restriction (CLIR)
- Connected line identification presentation (COLP)
- Connected line identification restriction (COLR)
- Call forwarding (CFU, CFB, CFNR)
- Call waiting (CW)
- Completion of calls to busy subscriber (CCBS)
- Direct dial-in (DDI)
- Call hold (CH)
- Multiple subscriber numbering (MSN)
- Terminal portability (TP)
- Sending and receiving messages (UUS)
- Three party conference
- Point-to-point connection
- Point-to-multi-point connection

Some services may not be used in IP extensions and IP external lines.

IP SOFTPHONES PROVIDE SOLUTIONS TO YOUR
VARIOUS COMMUNICATION REQUIREMENTS
SUCH AS VOICE CALL, VIDEO CONFERENCE,
INSTANT MESSAGING AND PRESENCE FROM
EVERYWHERE A NETWORK OR
AN INTERNET ACCESS EXISTS.

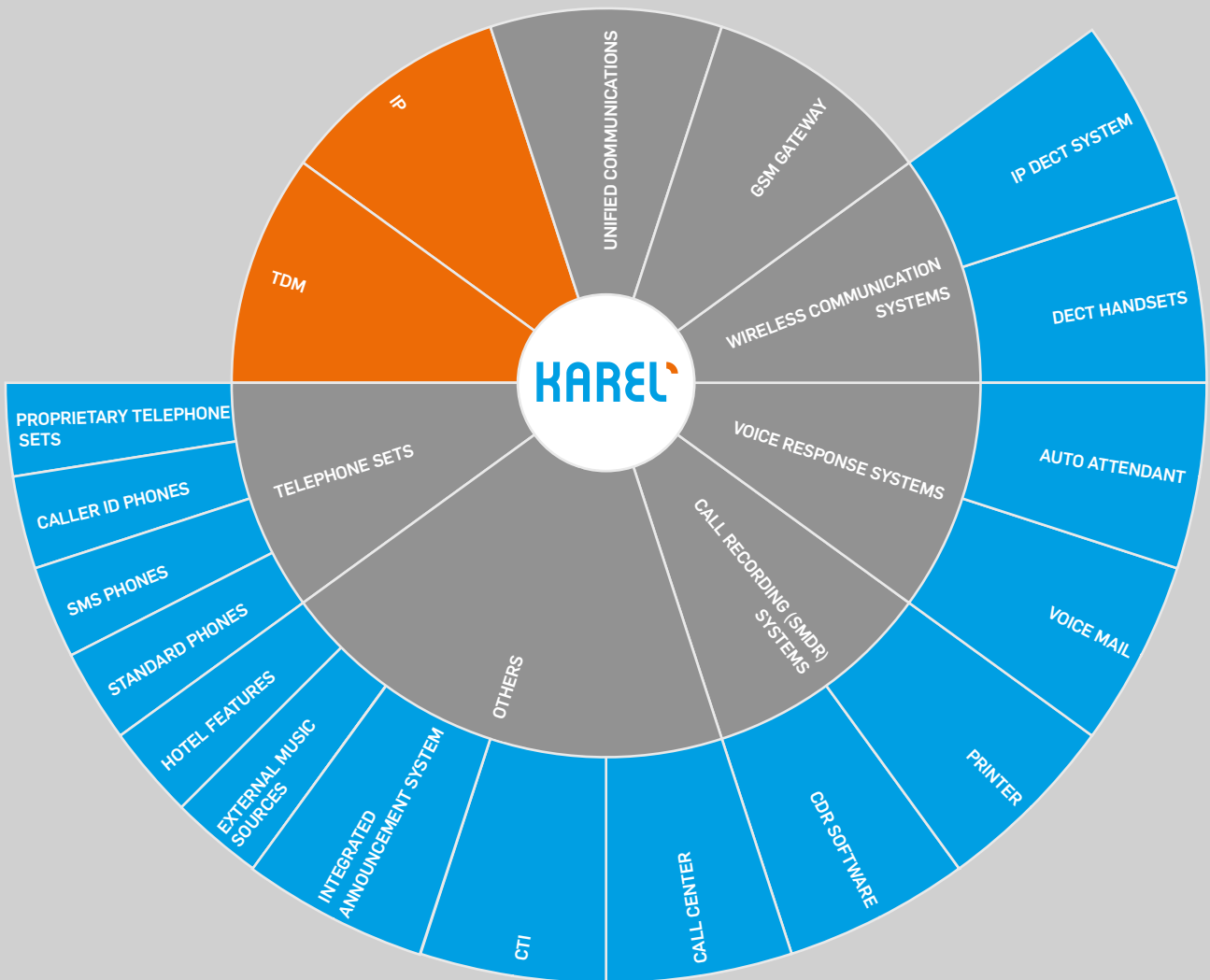
SOFTPHONE

	YT510	YT520	YT530
Voice Call	•	•	•
Video Call	-	•	•
Status Monitoring	•	•	•
GENERAL FEATURES			
Number of Active Accounts	2	10	10
Number of Call Channels	2	3	6
Audio Codecs	G.729, G.711u/a	G.729, G.711u/a, G.722, iLBC, EG711a, EG711u, ISAC, IPCMWB	G.729, G.711u/a, G.722, iLBC, EG711a, EG711u, ISAC, IPCMWB
SIP Compatibility	•	•	•
Audio and Video Prioritization with QoS	•	•	•
Encryption (TLS-SRTP)	-	•	•
USB Plug-and-Play	•	•	•
Internal Phonebook	•	•	•
Microsoft Outlook Integration	•	•	•
Number of Video Conference Channels	0	2	4
Video Codecs	-	H263-1998, H263, LSVX, H264	H263-1998, H263, LSVX, H264
Voice Call Record	•	•	•
Audio Conference Channel Capacity	2	3	6

MINIMUM REQUIREMENTS

Operating Systems	Windows Vista Business, Windows 7 Enterprise, Windows XP Professional, Windows Server 2008 R2 Enterprise, Windows Server 2003 Enterprise
Minimum RAM Requirement	512 MB.
Minimum Harddrive Space	100 MB.
CD-ROM Drive	Required
IP Network Connection	Broadband, LAN, Wireless
Sound Board Specifications	Full-Dublex, 16 bit





KAREL

