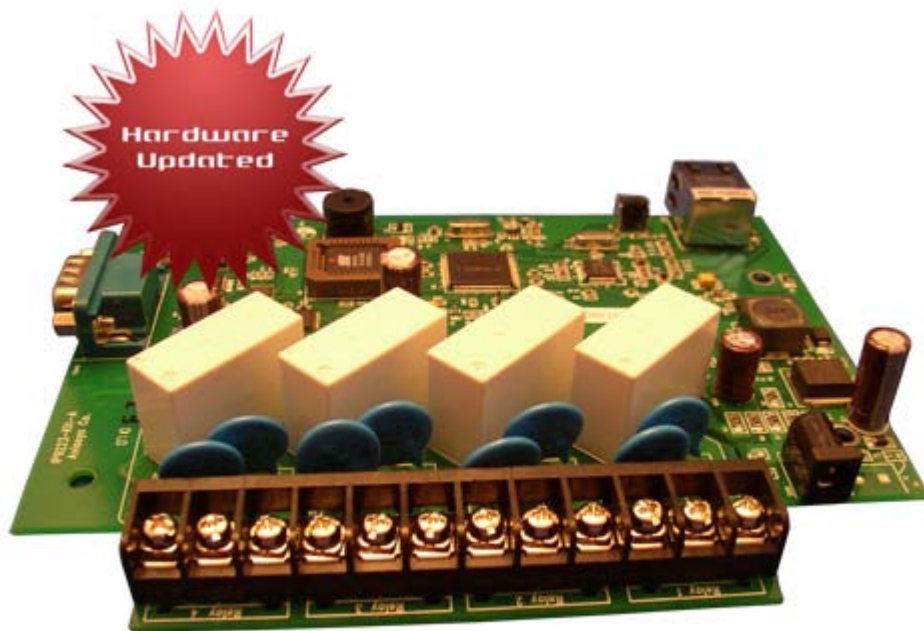


IP Power 9223K-A

User Manual



Release Date: 12/7/2011
Manual Version: 1.0
Firmware:

Warning: Any changes made to this equipment without permission may cause damages to the device!

IMPORTANT NOTICE

1. IP Power 9223K-A was designed to be used with a protective covering, the user is responsible for any damages caused from misuse, or use under inappropriate conditions.
2. Please use the power adapter provided by the dealer, the manufacturer is not responsible for any damage caused from using power adapters not.
3. Do not shake the IP Power 9223K-A in any fashion
4. Please contact the dealer If IP Power 9223K-A is not working properly.

Copyright © 2010 All rights reserved. No part of this publication may be reproduced, stored in a retrieval system, or transmitted in any form or by any means, electronic, mechanical, photocopying, recording or otherwise, without the prior written consent of us.
All trademarks and products mentioned in this document are the properties of us.

Table of Content

<u>1.) WELCOME</u>	<u>4</u>
INTRODUCTION	4
MINIMUM SYSTEM REQUIREMENTS	5
<u>2.) PRODUCT OVERVIEW</u>	<u>6</u>
FEATURES	6
SPECIFICATION	6
PACKAGE CONTENTS	7
<u>3.) INTERFACE DESCRIPTION</u>	<u>8</u>
HARDWARE INTERFACE	8
<u>4.) HARDWARE SETUP</u>	<u>9</u>
SETTING UP THE DEVICE	9
NORMALLY CLOSED CIRCUIT (NC) OR NORMALLY OPEN CIRCUIT (NO)	9
CONNECTING DEVICES TO THE 9223K-A	10
INTERNET ACCESSIBLE SETUP	11
<u>5.) IP EDIT SEARCH TOOL</u>	<u>11</u>
USING IP EDIT	11
IP SERVICE	12
<u>6.) WEB INTERFACE</u>	<u>14</u>
CONNECTING TO THE 9223K-A	14
GPIO CONFIGURATION	14
SET I/O	14
DEFINE I/O NAME	15
SYSTEM SETTINGS	17
SYSTEM CONFIGURATION	17
ADVANCE SETUP	17
DDNS	18

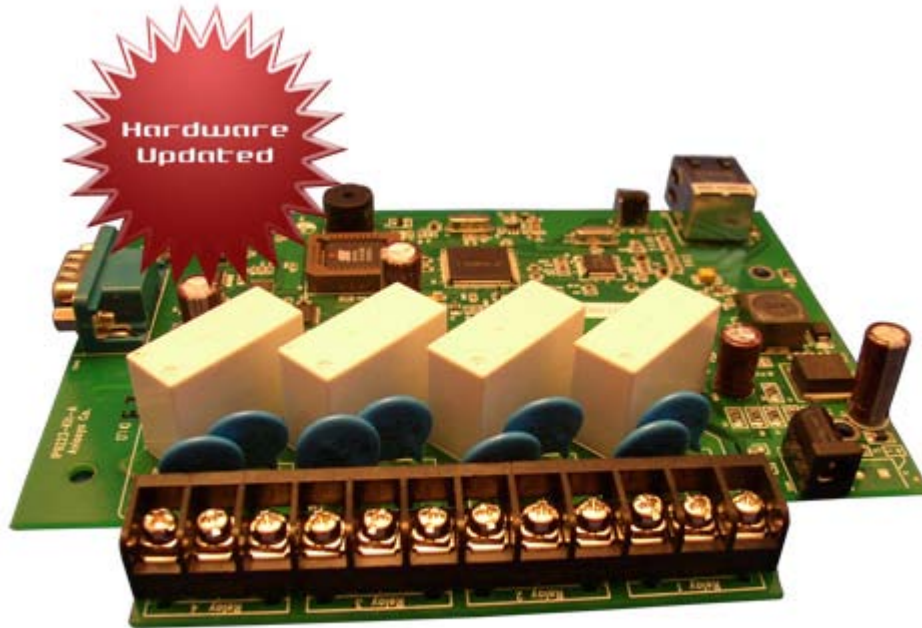
E-MAIL	18
CHANGE PASSWORD	19
POWER SCHEDULE	19
NETWORK WAKE UP	21
LOGOUT	21
INTERNAL TIME	21
DATE/TIME SETTINGS	21

7.) CONTROLLING THE DEVICE21

CGI HTTP COMMANDS	21
HELP COMMAND	22
SET POWER COMMAND	22
READ POWER COMMAND.....	22
RS232 CONTROL	23

8.) FREQUENTLY ASKED QUESTIONS (F.A.Q)23

1.) Welcome



Introduction

The 9223K-A is an industrial grade 4 port bare board relay perfect to power management through an Ethernet connection. This device can easily integrate with other devices and allow power control with your integrated system. With the 9223K-A robust design and high quality components it provides an added incentive to other devices or can be used independently. The 9223K-A brings an economical solution to a professional industry.

Minimum System Requirements

CPU Minimum Requirements

- 🔑 Intel(R), Pentium(R), DUAL Core (D), CPU 3.0GHz or equivalent
- 🔑 Operating Systems: WINDOWS Operating Systems (IE5.0+SPI & Firefox)
- 🔑 512 MB system memory or above
- 🔑 10/100 Ethernet switch/hub
- 🔑 Sound Card: DirectX 9.0c compatible sound card
- 🔑 Ethernet network port/card
- 🔑 Network cable
- 🔑 Internet (For remote access) or Ethernet Network (Internal Network use) with some type of Internet connection, (i.e. ADSL, Cable, Dial up or any other forms of Internet service)

Software

- 🔑 Windows XP Service Pack 2 or above.
- 🔑 Resolution of screen setting: 800x600 or higher

2.) Product Overview

Features

1. Inrush Current relay design for extra protection.
2. Designed to control T5 fluorescent lighting.
3. Embedded web server – No PC needed to connect.
4. Industrial 4 Port Relay design network controller
5. Accessible with popular web browsers - IE, Google Chrome, Netscape & Firefox.
6. Each relay can support current up to 8Amp
7. Power surge protection design to protect against high voltage power surge.
8. Designed to meet high voltage and current safety standard design and regulation.
9. Reliability and testing certification MBTF +200,000 hrs+
10. RS232 Control by inquiry (OEM projects) for system integration.
11. PCB standard safety design of 5mm soldering distance
12. Network protocols supported: Http, DDNS, DHCP, Virtual and Dynamic IP.
13. SNMP for trap – send message to manage server.
14. SDK (VB & VC) for own software development.

Specification

Power Input:

AC Adaptor Input: 100-240V~0.3A MAX 10-20VA, 50-60Hz

Relay Specs: AC 250V / DC 30V

Weight:

192.6 grams without packaging.

Dimensions (L x H):

16cm x 13cm

Casing:

Bare board

Relay Specification:

Normal Close(NC)

Regular Use: Max. 4A / port

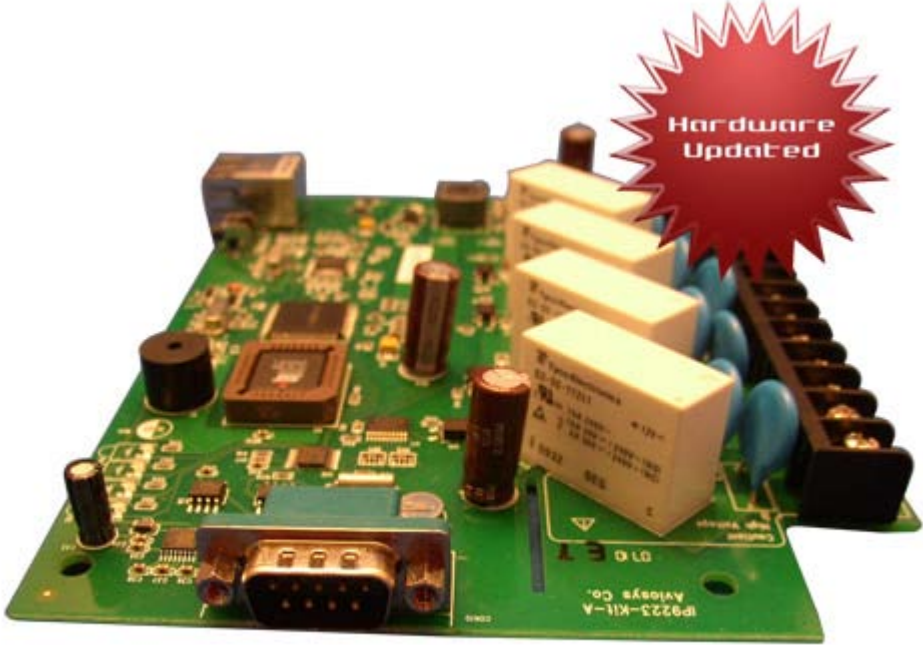
T5 fluorescent light control: 120Watt

Normal Open(NO)

Regular Use: Max. 8A / port

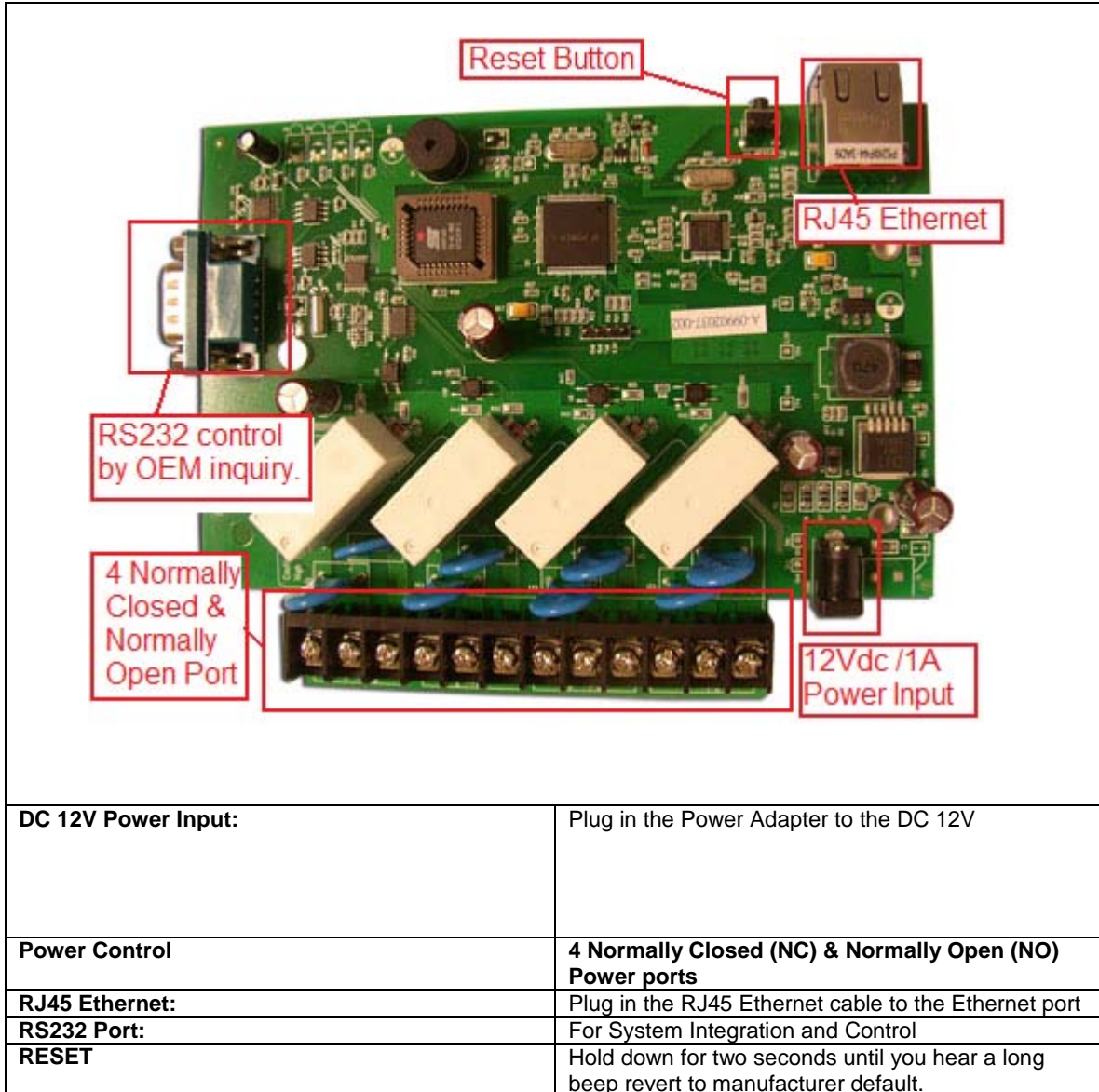
T5 fluorescent light control: 240Watt

Package Contents

Package Contents	
1.) 9223K-A Unit x 1	
2.) 9223K-A Installation CD	CD will provide manual, software, and documentation on the 9223K-A
3.) AC Adaptor	<p>(One AC adaptor will be included and will correspond to the countries power standards)</p> <p>Specs: Input: 100-250Vac /47-63Hz, 1A Output: 12Vdc/1A</p>

3.) Interface Description

Hardware Interface



4.) Hardware Setup

*Before setup the device make sure of the following:

- 1.) Make sure that all the package contents are all included if anything is missing please contact the store or your distributor.
- 2.) Make sure the power adaptor is the correct specification.
- 3.) Make sure that all the cables are working correctly

Setting up the Device

Warning: This part of the procedure can be very dangerous. Please follow instructions carefully or consult an electrician or someone who is experienced in the field to assist in the part of the procedure. Aviosys is not responsible for any damages to the device or harm caused by from misuse, incorrect installation, and (or) dangerous environment.

Normally Closed Circuit (NC) or Normally Open Circuit (NO)

The 9223K-A consists of a total of four relays. Each of the relays on the board has the option to pick whether this circuit will be **normally closed (NC)** or **normally open (NO)**.

Each relay can support a voltage up to **240VAC / 30 Vdc.** & a current of up to:

Normal Close(NC)

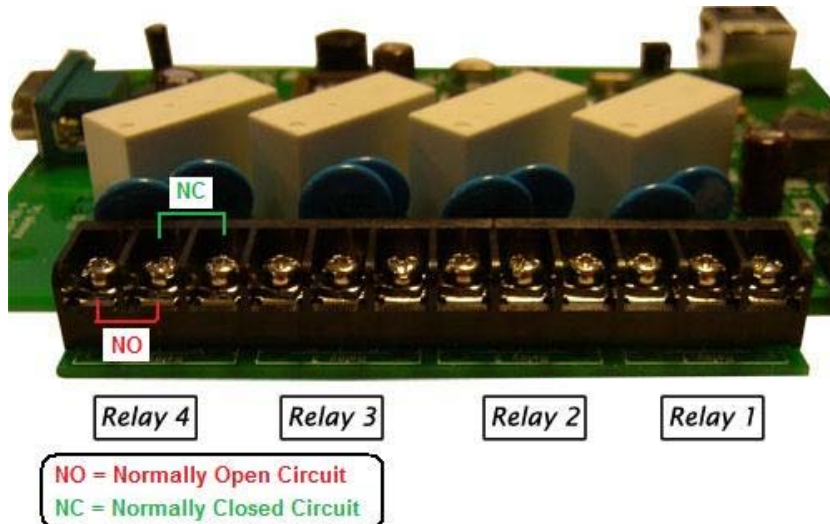
Regular Use: Max. 4A / port

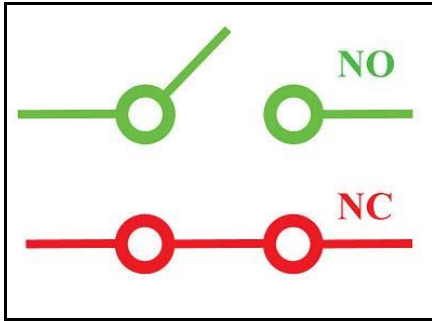
T5 fluorescent light control: 120Watt

Normal Open(NO)

Regular Use: Max. 8A / port

T5 fluorescent light control: 240Watt





Note:

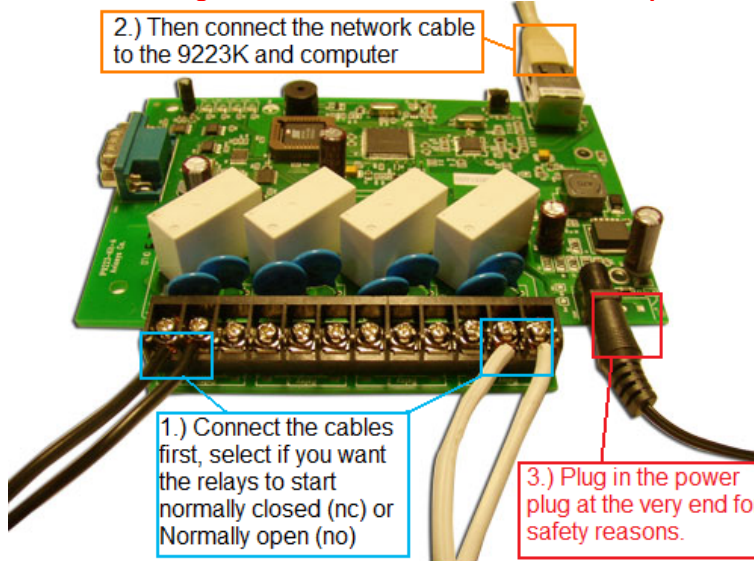
Please remember that you use normally open or normally closed the output control will either create a open circuit or a closed circuit.

Device Status	Control Status	Circuit
Normally Closed	On	Open
Normally Open	On	Closed

Connecting devices to the 9223K-A

Warning: This part of the procedure can be very dangerous. Please follow instructions carefully or consult an electrician or someone who is experienced in the field to assist in the part of the procedure. Aviosys is not responsible for any damages to the device or harm caused by from misuse, incorrect installation, and (or) dangerous environment.

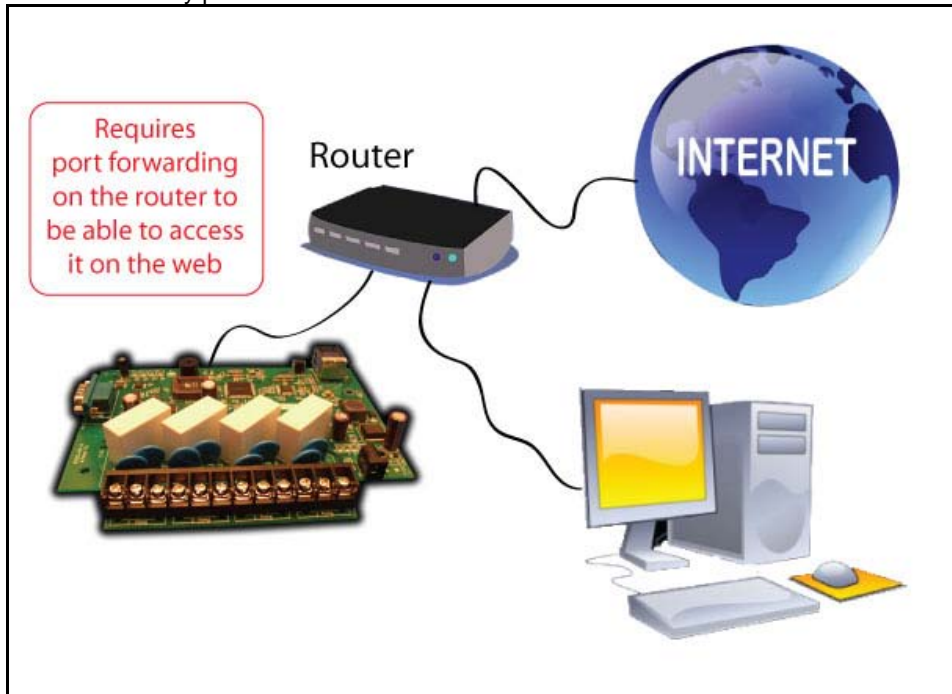
When connecting the device it is crucial not to have the power of the 9223K-A connected.



- 1.) First connect the cables to the 9223K-A. Make sure that you have stripped enough of the cable so that the contacts can fit into the 9223K-A.
 - a. During this part you will need to decide whether each relay will start normally open or normally closed. Once you have decided, carefully unscrew the inputs and place the contacts into the input area and screw on tightly.
- 2.) Plug in the network cable RJ45 into the 9223K-A
- 3.) After correctly installing steps 1 and 2 for the very last step plug in the power cable that came with 9223K-A.

Internet Accessible Setup

To be able to access the 9223K-A through the internet, the user must port forward on the router. Since each router is different, please refer to the routers manual on how to port forward the device. Once the device has been successfully port forwarded the use can connect the device from the internet.



For example

If the 9223K-A

IP Address: 192.168.100.200

Port: 9223

On the router you will need to port forward the IP Address 192.168.100.200 on Port 9223.

5.) IP Edit Search Tool

Using IP Edit

IPEdit is a search tool designed to setup and access the IP Power 9223K-A.

IP Service is an additional feature which searches for the device easily without having to remember long complicated IP addresses. Instead, this technology allows the user find his or her device through the internet just by device name.

Note: Please allow the IP Power 9223K-A 1 to load before using IPEdit.

Default IP: 192.168.1.100 (When no DHCP is apparent)

Default Login: admin

Default Password: 12345678

- 1.) Double click on the IP Edit icon to run the program.




- 2.) Open IPEdit and any device in the same network should automatically be detected and listed in the **local devices sections**.

Note: If the device is not showing up, please hit the rescan button and wait about 1 minute

Local Devices	
9223K.....192.168.100.29	

Input Ref Button	
Name	9223K
Gateway	192 . 168 . 1 . 1
IP Address	192 . 168 . 100 . 29
Netmask	255 . 255 . 255 . 0
HTTP Port1	80
HTTP Port2	0
MAC	00:92:24:00:00:35

- 3.) Click and highlight the device and the information on the device will populate on the right. Check to see if the gateway and IP Address match your current network. If not, type in

the correct information and input it into IP Edit. Then hit the submit  button to save changes. Then hit the rescan button to see if the changes have been made.

Local Devices	
9223K.....192.168.100.29	

Input Ref Button	
Name	9223K
Gateway	192 . 168 . 100 . 1
IP Address	192 . 168 . 100 . 29
Netmask	255 . 255 . 255 . 0
HTTP Port1	80
HTTP Port2	0
MAC	00:92:24:00:00:35

PPPoe(ADSL) DHCP Static

- 4.) Then double click on the device in the local device section and an IE web browser will pop up. If everything is set correction you should be in the login page area.

IPPOWER 9223K Login

Please enter user name and password.

User Name:

Password:

OK Cancel

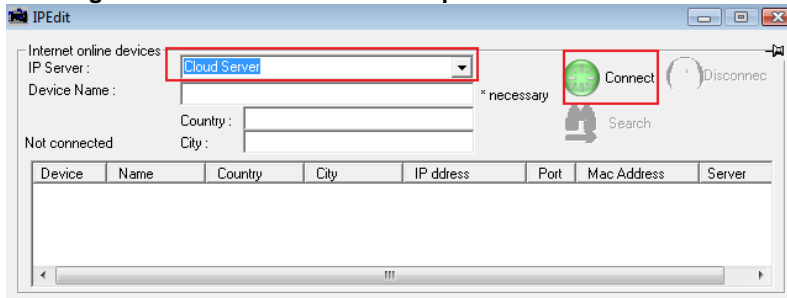
IP Service

How to use IP Service on IPEdit:

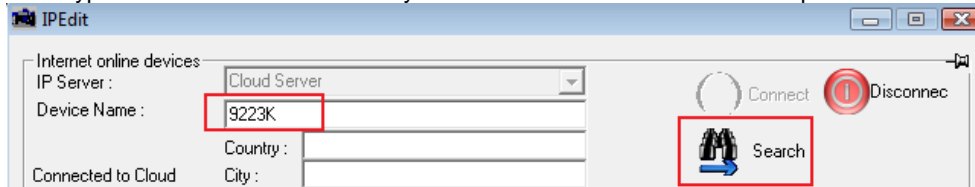
IP service allows the user to directly connect to his / her device through the internet without having to remember long confusing IP Address. Instead you only need to remember the name of the device that the you have selected. Then the user can connect to IP Service, type in the device name, and connect directly to the device.

Note: In the 9223K-A under the system configuration page, you can select the IP server that you would like the 9223K-A to go to. You can select from the Aviosys server or the Cloud Server.

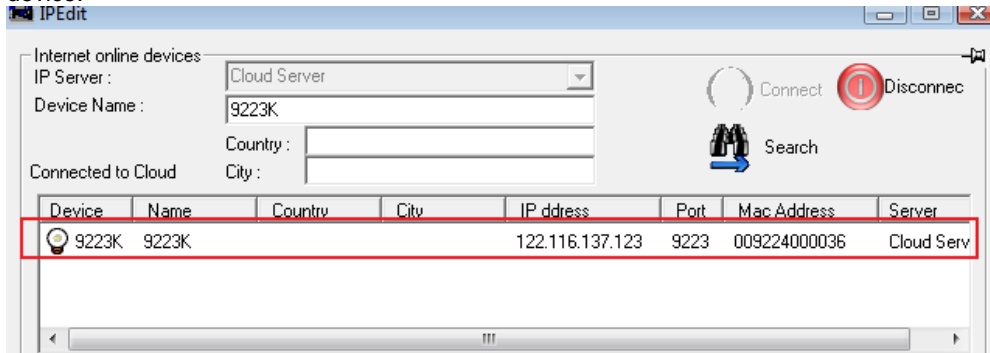
- 1.) Open IP Edit and Select the server that your 9223K-A is designated to.
- 2.) **Hit the green connect button on the top of IPEdit.**



- 3.) Then type in the 9223K-A Name that you have selected for the device and press the search button.



- 4.) Find your device and double click on the screen and a IE window will pop up connecting to your device.



Note: It is crucial to have the IP Address of the device port forwarded from the router that you are using so you can connect to your device from anywhere. Please refer to your routers user manual on how to port forward your device.

IPPOWER 9223K Login

Please enter user name and password.

User Name:

Password:

6.) Web Interface

Connecting to the 9223K-A

After the device has been setup correct it is time to connect to the device. You can connect to the 9223K-A by using the following methods.

- 1.) Using IP Edit
 - a. Open IP Edit and scan for the device. If the device is found double click on the Local devices section and a IE window should pop up to the login of the device



The image shows the login interface for the IPPOWER 9223K device. At the top is the IPPOWER logo, which consists of the letters 'IP' in a stylized font with 'POWER' written below it, all enclosed in a circular graphic with radiating lines. Below the logo is the title 'IPPOWER 9223K Login' in blue text. The main area is a light gray box with the instruction 'Please enter user name and password.' Below this are two input fields: 'User Name:' and 'Password:'. At the bottom of the gray box are two buttons: 'OK' and 'Cancel'.

Default IP: 192.168.1.100

Default Login: admin

Default Password: 12345678:

- 1.) After you have logged into the device you will be required to install active x controls. If this screen does not appear make sure you allow active x.

GPIO Configuration

Set I/O

The Set I/O configuration is where most of the live power control is done. From this panel the user can directly turn off power, set timers and turn power back on.

I/O Control

PIN I/O	Control	Timer
OUT1	<input checked="" type="radio"/> On <input type="radio"/> Off	28 Sec <input type="radio"/> On <input checked="" type="radio"/> Off
OUT2	<input type="radio"/> On <input checked="" type="radio"/> Off	0 Sec <input type="radio"/> On <input checked="" type="radio"/> Off
OUT3	<input type="radio"/> On <input checked="" type="radio"/> Off	0 Sec <input type="radio"/> On <input checked="" type="radio"/> Off
OUT4	<input type="radio"/> On <input checked="" type="radio"/> Off	0 Sec <input type="radio"/> On <input checked="" type="radio"/> Off
<input type="button" value="Apply"/> <input type="button" value="Reset"/>		

PIN I/O

The Pin I/O column is the labels for the ports on the device.

By default the output ports are labeled as Out1, Out2, Out3, & Out 4. To rename these default labels please see section "*Definite I/O Name*" for direction.

Note:

Please remember that you use normally open or normally closed the output control will either create a open circuit or a closed circuit.

Device Status	Control Status	Circuit
Normally Closed	On	Open
Normally Open	On	Closed

Control

The control section allows the user to directly turn on or turn off the device. Select the control that you would like to execute and hit apply to apply the settings. This will turn the device on or off.

Time

The timer allows the user to set an amount of time before a control is activated. To do this, simply enter the amount of delay time in seconds you would like the action to occur. Select the On or Off and hit the apply button. When the timer has reached the time set it will execute your command.

For example if Port 1 is on and I would like to turn it off in 30 sections, the command may look something like the following.

Note: The maximum number of seconds that can be set on the timer of the device is 9999.

PIN I/O	Control	Timer
OUT1	<input checked="" type="radio"/> On <input type="radio"/> Off	30 Sec <input type="radio"/> On <input checked="" type="radio"/> Off
OUT2	<input type="radio"/> On <input checked="" type="radio"/> Off	0 Sec <input type="radio"/> On <input checked="" type="radio"/> Off

Define I/O Name

Define I/O is the section that allows the user to define the device name, country, and city. As well as the names of each of the power outputs.

[Set Device Name](#)

Device Name Setup	
Device Name	9223K
Country	
City	

Set I/O Name				
Current Name	OUT1	OUT2	OUT3	OUT4
New Name	OUT1	OUT2	OUT3	OUT4

Device Name Setup

The device name setup is where the device name, country, and city can be set. These fields are optional and are used with IP Service to easily find the device on the internet.

Simply type in the fields and hit apply to save changes.

[Set Device Name](#)

Device Name Setup	
Device Name	Aviosys
Country	Taiwan
City	Pan Chiao

Set I/O Name

The Set I/O Name, allows the user to change the name of each of the ports, save the new settings to memory and restore the names from memory.

Set I/O Name				
Current Name	OUT1	OUT2	OUT3	OUT4
New Name	OUT1	OUT2	OUT3	OUT4

To change the name simply type into the New name row and hit the apply button. See example below.

Set I/O Name				
Current Name	OUT1	OUT2	OUT3	OUT4
New Name	Aviosys 1	Aviosys 2	Aviosys 3	Aviosys 4

After you hit apply, the current name will change to the new name.

Set I/O Name				
Current Name	Aviosys 1	Aviosys 2	Aviosys 3	Aviosys 4
New Name	Aviosys 1	Aviosys 2	Aviosys 3	Aviosys 4

Then if you would like to save it to memory you can push the memory button. This means if the device is set to default settings, the name of the device will be whatever you have chosen in memory.

To restore a memory name you can click on the GetMemory button.

System Settings

System Configuration

The system configuration page allows the user to configure the system of the 9223K-A. This includes network information, IP Server, CNT, CGI commands, and the firmware version. Depending on how each function is being used the user can customize this page and turn off functionality that is not being used at all.

System Configuration

Restart device after all changes have been made									
IP Address:	192	.	168	.	100	.	29	:	80
Subnet Mask:	255	.	255	.	255	.	0		
Default Gateway:	192	.	168	.	1	.	1		
DNS:	168	.	95	.	192	.	1		
IPServer:	<input checked="" type="radio"/> Enable <input type="radio"/> Disable		Cloud Server ▼						
CNT:	<input checked="" type="radio"/> Enable <input type="radio"/> Disable		Server2 ▼						
DHCP Client	<input checked="" type="radio"/> Enable <input type="radio"/> Disable								
BEEPER	<input checked="" type="radio"/> Enable <input type="radio"/> Disable								
Http Command Verification	<input checked="" type="radio"/> Enable <input type="radio"/> Disable								
Release Version:	V1.01 2010/05/19								
<input type="button" value="Submit"/> <input type="button" value="Cancel"/>									

IP Address: Here is where the user can change the IP Address of the device and port. Also IP Edit can be used to alter the devices IP Address.

Subnet Mask: Here is where the user can change the IP Address of the device and port. Also IP Edit can be used to alter the devices IP Address.

Default Gateway: Enter the gateway for the router.

DNS: Enter the DNS information here.

Note: Not having the correct DNS information will affect the NTP and SMTP mail server.

CNT: (Cross Network Technology): This will enable or disable the CNT on the device. CNT is basically a function that allows the device to work though the network without having to port forward the device. Please see manual on CNT or IP Power Center for more information on how to use CNT.

DHCP: This will enable or disable the DHCP on the device

Beeper: This will enable or disable the beep on the device

Http Command Verification: This will enable or disable the http commands for the 9223K-A

Release Version: Will provide information on the current firmware for the device

Advance Setup

The advance setup section allows the user to setup SNMP functionality for the 9223K-A. From here you can select the Manager IP Address, to trap when the output has been triggered, or even send an email with the output has been triggered.

Advance Setup

Advance Setup							
Manager IP Address:	192	.	168	.	1	.	25
Trap when DO has Triggered	<input type="radio"/> Enable <input checked="" type="radio"/> Disable						
Send e-mail when DO has Triggered	<input type="radio"/> Enable <input checked="" type="radio"/> Disable						
<input type="button" value="Submit"/> <input type="button" value="Cancel"/>							

Manager IP Address: Type in the IP Address of the computer that will be managing the SNMP of the 9223K-A

Trap when DO has triggered: This will send a SNMP trap when the digital Output has been triggered.

Send E-mail when DO has triggered: This will send an E-mail every time the output has been triggered.

DDNS

The DDNS Setup allows the user to setup the 9223K-A with a DDNS server. This way instead of having to remember long IP Addresses, the user now can easily use a WWW link to connect to the device. This also is

a good solution for users to have a dynamic IP Address where the IP continually changes and is not constant.

Note: We recommend using free services like www.dyndns.com for this portion. The device may react differently to other ddns services.

DDNS SETUP

DDNS SETUP	
DDNS Server IP:	204.13.248.109
Your Domain:	sample.dyndns.com
DDNS UserName:	sample
DDNS Password:	••••••
Enable DDNS:	Yes ▾
Proxy Enable:	No ▾
Proxy IP:	
Proxy Port:	-1
<input type="button" value="SAVE"/> <input type="button" value="UPDATE"/>	

DDNS Server IP: The DDNS server IP

Your domain: Type in the dyndns domain name

DDNS Username: Enter the DDNS username here

DDNS Password: Enter the DDNS password.

Enable DDNS: When using DDNS make sure that it is enabled.

If user is using a proxy account, you will need to enable it here.

Proxy Enable: Select true of false to enable or disable the proxy server

Proxy IP: The Proxy IP is the IP Address of the Proxy Server

Proxy Port: Enter the port of the proxy server here.

E-mail

The email setup on the 9223K-A allows the user to setup an email account which will be used to notify the user when certain actions have been activated.

Setup Email

Email Setup	
Mail Server:	sample.com
Port:	25
Pop3 Server:	sample.com
UserName:	login@sample.com
Password:	••••••
Sender:	login@sample.com
Receiver 1:	reciever@sample.com.tw
Receiver 2:	reciever@aviosys.com
Receiver 3:	
Subject:	9223K
MailBody:	mail body of 9223K
<input type="button" value="Save"/> <input type="button" value="Send"/>	

Mail Server: Enter the mail server of email that you are using

Port: Enter the port of the mail server

Pop3 Server: Enter the pop3 server name

User Name: Enter a valid username for the email server

Password: Enter a password

Sender: Enter the sender email address

Receiver 1, 2, 3: Enter the receiver email address

Subject: Enter a subject line for the email so that the receiver would be able to identify the email

Mail Body: Enter the information that is in the body of the device

Note: Not all email servers may be compatible with the 9223K-A. Please see the FAQ section of the manual for a list of compatible Email providers.

Change Password

The change password function, will allow the user to change the current password of the device.

Change Password

Password Change	
Old Password:	<input type="text"/>
New Password:	<input type="text"/>
Confirm Password:	<input type="text"/>
Login Required:	<input type="radio"/> NO <input type="radio"/> Yes
<input type="button" value="Submit"/>	

Changing the password of the device:

- 1.) Type in the old password for the device
- 2.) Then type in the new password maximum of 8 characters
- 3.) Repeat the new password again
- 4.) Then hit the submit button.

The login required option allows the user to choose whether they would like to disable login capabilities for the device.

Power Schedule

The power schedule offers flexibility so the user can easily schedule events to control the power of the device.

Power Scheduler

PIN I/O	Date	Time	Repeats	PIN I/O ON/OFF								
Out 1_A	2010 - 10 - 10	10 : 10 : 10	Disable ▼	<input type="radio"/> ON <input checked="" type="radio"/> OFF								
Out 1_B	2010 - 10 - 10	10 : 10 : 10	Disable ▼	<input type="radio"/> ON <input checked="" type="radio"/> OFF								
Out 2_A	2010 - 10 - 10	10 : 10 : 10	Disable ▼	<input type="radio"/> ON <input checked="" type="radio"/> OFF								
Out 2_B	2010 - 10 - 10	10 : 10 : 10	Disable ▼	<input type="radio"/> ON <input checked="" type="radio"/> OFF								
Out 3_A	2010 - 10 - 10	10 : 10 : 10	Disable ▼	<input type="radio"/> ON <input checked="" type="radio"/> OFF								
Out 3_B	2010 - 10 - 10	10 : 10 : 10	Disable ▼	<input type="radio"/> ON <input checked="" type="radio"/> OFF								
Out 4_A	2010 - 10 - 10	10 : 10 : 10	Disable ▼	<input type="radio"/> ON <input checked="" type="radio"/> OFF								
Out 4_B	2010 - 10 - 10	10 : 10 : 10	Disable ▼	<input type="radio"/> ON <input checked="" type="radio"/> OFF								
<div>System Startup Power Default Value:</div> <table border="1"> <tr> <td>Out 1</td> <td>Out 2</td> <td>Out 3</td> <td>Out 4</td> </tr> <tr> <td><input type="radio"/> ON <input checked="" type="radio"/> OFF</td> <td><input type="radio"/> ON <input checked="" type="radio"/> OFF</td> <td><input type="radio"/> ON <input checked="" type="radio"/> OFF</td> <td><input type="radio"/> ON <input checked="" type="radio"/> OFF</td> </tr> </table>					Out 1	Out 2	Out 3	Out 4	<input type="radio"/> ON <input checked="" type="radio"/> OFF	<input type="radio"/> ON <input checked="" type="radio"/> OFF	<input type="radio"/> ON <input checked="" type="radio"/> OFF	<input type="radio"/> ON <input checked="" type="radio"/> OFF
Out 1	Out 2	Out 3	Out 4									
<input type="radio"/> ON <input checked="" type="radio"/> OFF	<input type="radio"/> ON <input checked="" type="radio"/> OFF	<input type="radio"/> ON <input checked="" type="radio"/> OFF	<input type="radio"/> ON <input checked="" type="radio"/> OFF									
<input type="button" value="Submit"/>												

PIN I/O Each output will have an output A and an output B.

Date: Enter the date in which the action will occur needs to be set.

Time: Enter the time of the action will occur.

Repeats: Select the frequency of this action.

Just Once (Just one time)

Everyday (Sunday thru Saturday)

Workdays (Monday thru Friday)

Weekend (Saturday, Sunday)

Pin I/O On/Off: Select the action of choice, On or off

For example:

If you would like to turn on the device at 8AM and turn off the device at 8PM, the device may be set in this fashion.

PIN I/O	Date	Time	Repeats	PIN I/O ON/OFF
Out 1_A	2010 - 10 - 10	08 : 00 : 00	Just Once ▼	<input checked="" type="radio"/> ON <input type="radio"/> OFF
Out 1_B	2010 - 10 - 10	20 : 00 : 00	Just Once ▼	<input type="radio"/> ON <input checked="" type="radio"/> OFF
Out 2_A	2010 - 10 - 10	10 : 10 : 10	Disable ▼	<input type="radio"/> ON <input checked="" type="radio"/> OFF

System Startup Power Default Value: The system power default allows the user to select the power to be on or off by default when the device is powered up.

Note:

Please remember that you use normally open or normally closed the output control will either create a open circuit or a closed circuit.

Device Status	Control Status	Circuit
Normally Closed	On	Open
Normally Open	On	Closed

n

System Startup Power Default Value:			
Out 1	Out 2	Out 3	Out 4
<input type="radio"/> ON <input checked="" type="radio"/> OFF	<input type="radio"/> ON <input checked="" type="radio"/> OFF	<input type="radio"/> ON <input checked="" type="radio"/> OFF	<input type="radio"/> ON <input checked="" type="radio"/> OFF

Network Wake up

The network wake up function allows the 9223 to wake up computers, servers or systems that have a wake on lan capability. This functionality is not available on all PC's and requires the motherboard or Ethernet card to have Wake on Lan support for this functionality to work correctly.

Wake on Lan

Wake on Lan	
MAC:	<input type="text" value="FFFFFFFFFFFF"/>
<input type="button" value="Save"/> <input type="button" value="Send"/>	

Simply just type in the mac address of the system that you would like to start up and hit the send button and the device will be activated.

Logout

Click on the Logout link after you finish each session of using the IP Power 9223K-A. This will ensure that any other person that uses the device next will not be able to control the devices without logging in.

Internal Time

Date/Time Settings

The date and time settings allow the user to synchronize the 9223K-A with their local time or a NTP server.

Date/Time Setup

Date/Time Setup									
DateTime:(yyyy-mm-dd HH:MM:SS)									
<input type="text" value="2010"/>	-	<input type="text" value="5"/>	-	<input type="text" value="21"/>	<input type="text" value="11"/>	:	<input type="text" value="37"/>	:	<input type="text" value="9"/>
NTP Server IP Address:									
<input type="text" value="192"/>	.	<input type="text" value="43"/>	.	<input type="text" value="244"/>	.	<input type="text" value="18"/>	TimeZone: <input type="text" value="0"/>		
<input type="button" value="SAVE"/> <input type="button" value="NTP"/> <input type="button" value="Local-Time"/>									

NTP: Network Time Protocol can be entered into the 9223K-A. Simply just enter the IP Address of the NTP Server and hit the NTP button to synchronize. Then press save .

Local Time: The local time gets the time of the PC that is currently being used.

7.) Controlling the Device

CGI HTTP Commands

Http commands allow you to control the device with commands. The basic commands are provided below.

There are two ways to input http commands with authorization required

Password in http:

<http://login:password@ipaddress:port/command>

Password not in http:

<http://ipaddress:port/command>

Note: If you use the password not in http: command you will need to enter it when the browser asks for the password.

Help Command

The help command will give you the commands that are available on the device. Simply type the codes for the correct code.

Ex:

<http://192.168.1.3/?>

<http://192.168.1.3/help>

Output:

Set P61-P64 On/Off
<http://xxx/Set.cmd?cmd=setpower+p61=1/0+...>
Read P6
<http://xxx/Set.cmd?cmd=getpower>

Set Power Command

The Set Power command allows you to control the devices on/off through the http commands. With this command you can integrate the 9223K-A with any other system.

Outlet	Power On	Power Off
Output 1	61 = 1	61 = 0
Output 2	62 = 1	62 = 0
Output 3	63 = 1	63 = 0
Output 4	64 = 1	64 = 0

Ex. For Single Port Control On

<http://192.168.1.3/set.cmd?cmd=setpower+p61=1>

Output: P61=1

Ex. For Single Port Control Off

<http://192.168.1.3/set.cmd?cmd=setpower+p61=0>

Output:P61=0

Ex. For Multiple Port Control

<http://192.168.1.3/set.cmd?cmd=setpower+p61=1+p62=1+p63=1+p64=1>

Output: P61=1,P62=1,P63=1,P64=1

Read Power Command

1. Set P6 On/Off
<http://192.168.1.3/set.cmd?cmd=setpower+p61=1> (開) , setpower+p61=0(關)

P61=1

2. Read P6
<http://192.168.1.3/set.cmd?cmd=getpower>

P61=1,P62=0,P63=0,P64=0

RS232 Control

RS232 Control is available to be added as an optional feature.

This option, if required is available on a project basis to fit each individual usage. Please contact us at Sales@Aviosys.com for more info.

8.) Frequently Asked Questions (F.A.Q)

Please visit our FAQ section on our website for the latest and most updated information on this product. You can visit our site at: www.Aviosys.com

Q1: Which email providers are compatible with the 9223K-A?

Ans: If you are having problems getting your email address to work, we recommend try using the following email providers for the 9223K-A.

lavabit.com

POP3: lavabit.com

port: 110

SMTP: lavabit.com

port: 25

inbox.com

POP3: my.inbox.com

port: 110

SMTP: my.inbox.com

port:25

gawab.com

POP3: ppop.gawab.com

port: 995

SMTP: psmtp.gawab.com

port: 465

gmx.com

POP3: pop.gmx.com

port: 110

SMTP: mail.gmx.com

port: 25

Q2: Why can I not find my device in IP edit?

Ans:

Make sure of the following first:

- 1.) The IP Address of the 9223K-A matches the IP Address of your network.

- 2.) IP Edit is updated to the most recent version
- 3.) The 9223K-A is updated.
- 4.) Hit the rescan button a few times to make sure it is working properly.

Q3: What can I do if I forget my password?

Ans: In the login field enter the field

- 1.) "super user": do not enter the quotation marks and there is a space between super and user.
- 2.) Then do not enter a password and hit the submit button
- 3.) Unplug the device and plug it back in.
- 4.) Then use the default login and password

Default Login: admin

Default Password: 12345678

Q4: How to I revert back to Manufacturers default settings?

Ans: Hold the reset button for at least 10 seconds and you will hear a beeping sound. Then you will need to use IP Edit to re-setup the device.

Default IP: 192.168.1.100 (When no DHCP is apparent)

Default Login: admin

Default Password: 12345678