

Chinese Input Utility

Supporting the ISO 10646 Standard, including Extension B
(on Windows XP platforms)

User Manual

Version: 1.1

October 2004

Office of the Government Chief Information Officer
© The Government of the Hong Kong Special Administrative Region

All rights reserved. No part of this document may be reproduced in any form.

TABLE OF CONTENTS

1. INTRODUCTION.....	1
1.1 BACKGROUND.....	1
1.2 OVERVIEW OF THE CHINESE INPUT UTILITY.....	2
2. SYSTEM REQUIREMENTS	3
2.1 HARDWARE.....	3
2.2 SOFTWARE PLATFORM.....	3
3. INSTALLATION.....	4
3.1 DOWNLOAD CHINESE INPUT UTILITY SOFTWARE.....	4
3.2 INSTALLATION PROCEDURES.....	4
4. USING THE CHINESE INPUT UTILITY.....	5
4.1 INPUTTING CHINESE CHARACTERS.....	5
4.2 SWITCHING INPUT METHODS IN CHINESE INPUT UTILITY.....	6
4.3 INPUTTING ALPHABET AND NUMBER.....	6
4.4 TOGGLE OFF CHINESE INPUT UTILITY.....	6
4.5 EXAMPLES OF USING CHINESE INPUT UTILITY.....	7
4.5.1 <i>Changjei</i>	7
4.5.2 <i>Quick</i>	7
4.5.3 <i>Stroke Count</i>	8
4.5.4 <i>Unicode Internal Code</i>	8
5. UN-INSTALLATION.....	9
6. FREQUENTLY ASKED QUESTIONS.....	10

1. INTRODUCTION

The release of ISO/IEC 10646-2:2001 international coding standard is a major enrichment of the ISO 10646 standard, where the adoption of ISO 10646 is the Government's IT strategy on common Chinese language interface. As a measure to further facilitate the adoption of the common Chinese language interface, the Government provides this software, "Chinese Input Utility Supporting the ISO 10646 Standard, including Extension B" (Referred as "Chinese Input Utility" hereinafter). Making the Chinese Input Utility available to public users will meet Government's objective of increasing the adoption of the common Chinese language interface in the wider community. This in turn will facilitate the development of IT products supporting the ISO 10646 standard and the Hong Kong Supplementary Character Set (HKSCS-2001) (Note 1). The Chinese Input Utility includes more than 1,600 characters of the HKSCS-2001 that are allocated in the Extension B of ISO 10646 standard.

This Chinese Input Utility supports the ISO/IEC 10646:2003 (Note 2) and HKSCS-2001 to let users input Chinese characters into Unicode compliant application software (Note 3).

For the further information of ISO 10646, Extension B and HKSCS-2001, please visit the Digital 21 website at the following URL:
http://www.info.gov.hk/digital21/eng/structure/intro_iso.html

1.1 BACKGROUND

As Chinese is the language used by most people in Hong Kong, the development of a common electronic interface for users who prefer to use Chinese in electronic communication is very important. The major problems of electronic communication conducted in Chinese are the existence of different coding standards and insufficient characters in some Chinese character sets used on computers.

Note 1 : The HKSCS-2001 is the updated version of the HKSCS released in 1999. The HKSCS-2001 contains 4,818 Chinese characters that are specific to the Hong Kong environment and that are used by the public and the Government in electronic communication and data exchange conducted in Chinese.

Note 2 : ISO/IEC 10646:2003 is the result of the merger of the ISO/IEC 10646-1:2000 and ISO/IEC 10646-2:2001. The ideographic characters in the ISO/IEC 10646:2003 are the same as those in the ISO/IEC 10646-1:2000 cum ISO/IEC 10646-2:2001.

Note 3 : In 1991, the International Organization for Standardization and the Unicode Consortium agreed to synchronize the ISO 10646 standard and Unicode. The characters and code-points included in the ISO 10646 and Unicode are identical. Therefore, products supporting Unicode also support the ISO 10646 standard.

Under the Digital 21 IT Strategy, the Government has developed an open and common Chinese language interface for the Hong Kong Special Administrative Region. The objective is to address the above problems so as to achieve more accurate electronic communication conducted in Chinese. A pivotal element of the open and common Chinese language interface is the adoption of the ISO 10646 coding standard, which is an international standard developed by the International Organization for Standardization (ISO) for the handling of characters in electronic data storage and exchange. The ISO 10646 standard embraces characters used in major languages in the world including traditional and simplified Chinese characters. The Government has been actively participating in the development of the ISO 10646 standard.

1.2 OVERVIEW OF THE CHINESE INPUT UTILITY

Components	Description
Installation program (ISO10646IME.EXE)	For the installation of the Chinese Input Utility.
Chinese Input Utility (ISO10646.IME)	To input characters into Unicode compliant application software.
Input method tables (CHANGJIEI.TXT, QUICK.TXT and STROKE.TXT)	Input method tables for Changjei, Quick and Stroke Count.
Font file (MINGEXTB.TTF)	A font file containing HKSCS-2001 characters coded in ISO/IEC 10646:2003. The font name is “Ming(for ISO 10646)ExtB”. (This font file requires the font “MingLiU” and “MingLiU_HKSCS” that are provided by the platforms. Please refer to Chapter 2 of this manual for the requirements on software platforms.)
Un-installation program (UNINSTALL.EXE)	For un-installation of the Chinese Input Utility and related files.

This user manual provides instructions for installing and using this Chinese Input Utility and other related information.

2. SYSTEM REQUIREMENTS

2.1 HARDWARE

- Equivalent to Pentium III 300 megahertz (MHz) processor or above;
- 256 megabytes (MB) of RAM or more;
- 50 MB of available disk space; and
- Display resolution with 800x600 or above.

2.2 SOFTWARE PLATFORM

This Chinese Input Utility runs on Chinese or English Windows XP (the Platforms). Please install additional software and setup configuration according to the following information.

Chinese Windows XP:

- download and install HKSCS support software that is provided by the Platforms at <http://www.microsoft.com/hk/hkscs>.

English Windows XP :

- install “East Asian languages”;
 - Click “Start”, “Control Panel”, “Date, Time, Language, and Regional Options”;
 - Click “Regional and Language Options”, and “Languages”;
 - Check “Install files for East Asian languages” and then click “Apply” button.
- configure desktop to show Chinese input method icon;
 - Click “Start”, “Control Panel”, “Date, Time, Language, and Regional Options”;
 - Click “Regional and Language Options”, and “Languages”;
 - Click “Details” button and then “Language Bar”;
 - Enable “Show additional language bar icons in the taskbar”, then “OK”.
- download and install HKSCS support software that is provided by the Platforms at <http://www.microsoft.com/hk/hkscs>.

For information:

Chinese Input Utility can work with the following ISO/IEC 10646:2003 enabled application software:

Mozilla 1.5, Internet Explore 6.0 and Microsoft Office XP.

Regarding the usage of the Platforms and application software, we recommend users to take reference to the manuals or information provided by the corresponding software vendors, and to browse related information posted on vendors’ corresponding web sites.

3. INSTALLATION

(Before you start installation, please make sure again that your system has met the Platform's requirements as specified in Chapter 2, System Requirements, of this manual.)

3.1 DOWNLOAD CHINESE INPUT UTILITY SOFTWARE

“ISO10646IME.EXE” is the installation program of this Chinese Input Utility. Please download the ISO10646IME.EXE to your system by following the instructions in the Government’s Digital 21 web site:

<http://www.info.gov.hk/digital21/eng/hkscs/download.html>

3.2 INSTALLATION PROCEDURES

Step 1: Start Installation

Please exit all application software and ensure that the Platforms are installed on drive C. Double click the “ISO10646IME.EXE” to start installation of the Chinese Input Utility. And the following screen will be displayed.



Then follow the instructions of the installation program.

Step 2: Please wait a moment as the installation program will decompress / un-zip and copy the Chinese Input Utility and its related files to your system.

Step 3: Restart computer

When the installation ends, click the “Finish” button and restart your computer to complete the installation.

4. USING THE CHINESE INPUT UTILITY

The Chinese Input Utility provides 4 input methods (Changjei, Quick, Stroke Count and Unicode Internal Code) for users to input Chinese characters to application software that support ISO/IEC 10646:2003.

The HKSCS characters coded in Extension B of ISO/IEC 10646:2003 are distinguished in blue in the candidate list of characters of this Chinese Input Utility software.

4.1 INPUTTING CHINESE CHARACTERS

Step 1: Launch an application software that supports Unicode (e.g. WordPad bundled in the Platforms).

Step 2: For English Platform users, click the “EN” icon of language bar, then select “CH” to switch to Chinese input method. Then select “中文輸入工具-ISO 10646 (Ext B)” button.



EN icon



“中文輸入工具-ISO 10646 (Ext B)” button

For Chinese Platform users, press “Ctrl + Space” keys to activate the Chinese input method, then press “Ctrl + Shift” key until the following status bar is shown.



Step 3: Changjei is the default Chinese input method. Type the input code(s) of the Changjei code of a Chinese character and then press the “Space” key.

Press “ESC” key to cancel the input code(s), or press “Backspace” key to delete the input code just keyed in.

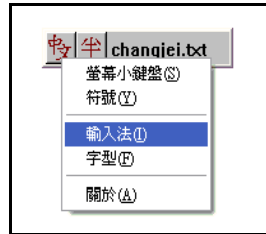
Step 4: If only one Chinese character corresponds to that input code(s), then the Chinese character will be automatically input.

Step 5: If more than one Chinese character correspond to that input code(s), use numeric keys “1” – “9” on the upper part of the keyboard to select the character to be input. If all the characters cannot be displayed in one page, please press “Page Up” and “Page Down” keys to show the previous and next page of Chinese characters respectively.

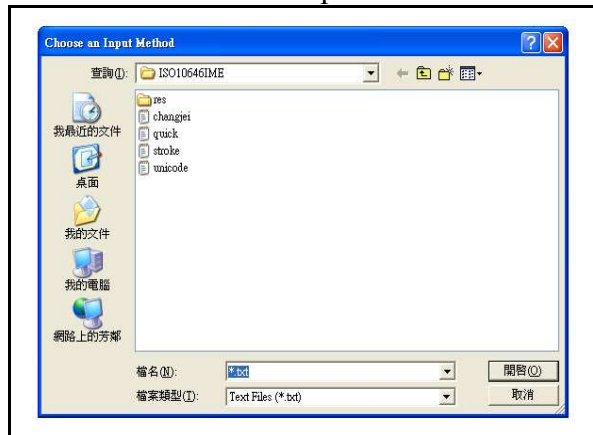
4.2 SWITCHING INPUT METHODS IN CHINESE INPUT UTILITY

Step 1: If Chinese Input Utility is not yet activated, press “Ctrl + Space” keys to activate it. For details, please refer to Step 2 of Section 4.1.

Step 2: To switch among the Chinese input methods provided by the Chinese Input Utility, move the mouse pointer over the leftmost icon, right click the mouse button and select “Input Method”(輸入法(I)).



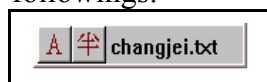
Step 3: Then a window will appear as follows. Select one of the Chinese input methods: Changjei, Quick, Stroke and Unicode. Then click “open” button to switch to the selected input method.



Step 4: Click the input area of the application software and then continue to input Chinese characters.

4.3 INPUTTING ALPHABET AND NUMBER

Step 1: Press the “Ctrl + Space” keys to toggle off the Chinese Input Utility, or use the mouse to click the leftmost icons of the status bar to switch to the followings:



Step 2: Click the input area of the application software and then continue to input alphabet or number.

4.4 TOGGLE OFF CHINESE INPUT UTILITY

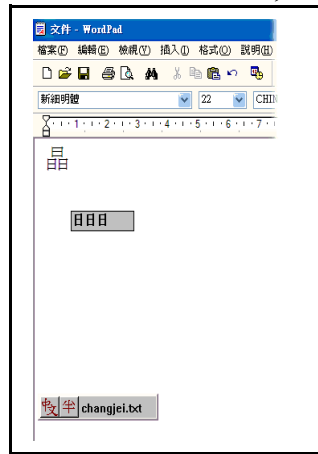
Press the “Ctrl + Space” keys to toggle off or quit Chinese Input Utility.

4.5 EXAMPLES OF USING CHINESE INPUT UTILITY

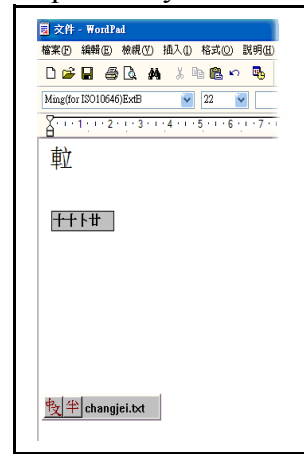
4.5.1 Changjei

Step 1: Switch to Changjei input method.

Step 2: Press “A”, “A”, “A” and “Space” keys, then the Chinese character with the specified Changjei codes will be input. An example for a Chinese character in Extension B is “J”, “J”, “Y”, “T” and “Space” keys.



(Unicode code of “晶” : 6676)

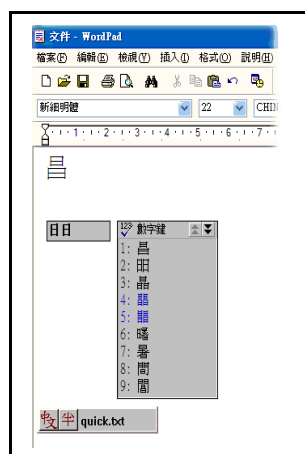


(Unicode code of “軫” : 282E2)

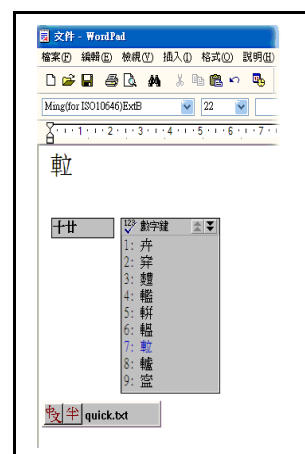
4.5.2 Quick

Step 1: Switch to Quick input method.

Step 2: Press “A” and “A” keys, then Chinese Input Utility will show all the characters with the specified Quick input codes. Press “1” key on the upper part of the keyboard to input the first character into the application software. An example for a Chinese character in Extension B is “J” and “T” keys.



(Unicode code of “昌” : 660C)



(Unicode code of “軫” : 282E2)

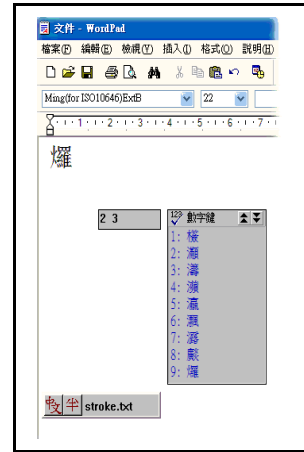
4.5.3 Stroke Count

Step 1: Switch to Stroke Count input method.

Step 2: Press “1” on the upper part of the keyboard and “Space” keys, and then the Chinese Input Utility will show all characters with one stroke. Press the numeric key “2” on the upper part of the keyboard to input the character “一”. An example for a Chinese character in Extension B is “2” and “3” key, then use the “Space” key to navigate until the required character is shown.



(Unicode code of “一” : 4E00)

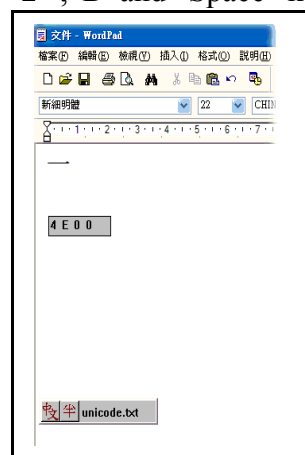


(Unicode code of “耀” : 244D3)

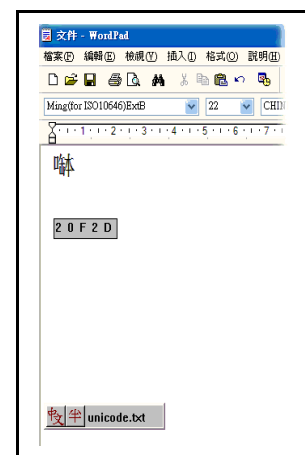
4.5.4 Unicode Internal Code

Step 1: Switch to Unicode Internal Code input method.

Step 2: Press “4”, “E”, “0”, “0” and “Space” keys, then the Chinese character will be input. An example for a Chinese character in Extension B is “2”, “0”, “F”, “2”, “D” and “Space” keys.



(Unicode code of “一” : 4E00)



(Unicode code of “囉” : 20F2D)

Note on Unicode Internal Code:

The Unicode Internal Code input method only accepts 4 or 5 hexadecimal digits for Unicode inputs (valid hexadecimal digits are 0 to 9 and A to F).

5. UN-INSTALLATION

(Caution:

After un-installation of Chinese Input Utility, the Chinese font, Ming(for ISO10646) ExtB, will also be un-installed. For proper display of Chinese characters of Extension B in programs or documents, you may need to install Chinese fonts that are supporting ISO 10646:2003, and configure the programs/documents to use those fonts.)

Step 1 : Close Chinese Input Utility.

Step 2 : The un-installation program of this Chinese Input Utility is “uninstall.exe”, which is installed to “C:\Program Files\ISO10646IME” by default.

Step 3 : Double-click the “uninstall.exe” and follow the instructions.

Step 4 : Reboot the computer to make the un-installation effective.

6. FREQUENTLY ASKED QUESTIONS

1. What is the difference between this Chinese Input Utility and the software, ISO 10646 version of HKSCS-2001 reference font and input software (for ISO 10646-compliant applications running on English or Chinese Windows 98/ME/NT4/2000) (the Previous Version) ?

The Previous Version supports ISO/IEC 10646-1:2000 while this Chinese Input Utility supports HKSCS characters coded in ISO/IEC 10646:2003. In this Chinese Input Utility software, the HKSCS characters coded in Extension B of ISO/IEC 10646:2003 will be distinguished in blue in the candidate list of characters.

2. I have successfully installed the Chinese Input Utility. How to use it?

On Chinese version of Windows XP, users can press “Ctrl + Space” keys and then press “Ctrl + Shift” key until “中文輸入工具-ISO 10646 (Ext B)” is selected. Please refer to Chapter 4 of this manual for details.

3. Which application software support ISO/IEC 10646:2003 ?

Examples of application software are, including but not limited to, Mozilla 1.5, Internet Explorer 6.0, Microsoft Office XP and Wordpad 5.1 bundled on Windows XP.

4. Why are some HKSCS characters displayed as blank?

Prior to the installation of this Chinese Input Utility, it is required to download and install “HKSCS support software” that is available at <http://www.microsoft.com/hk/hkscs>. Please make sure again that your platform has met the requirements as specified in Chapter 2 of this manual.

5. Why are some characters displayed as blank or black squares in some application software?

The application software may not support characters under the Extension B of ISO/IEC 10646:2003. Regarding the technical information of document compatibility issues among different version of software products, users are recommended to inquiry the corresponding software vendors. For the description of ISO 10646 and Extension B, please visit the website at: http://www.info.gov.hk/digital21/eng/structure/intro_iso.html

<END>