

Quick Reference Guide

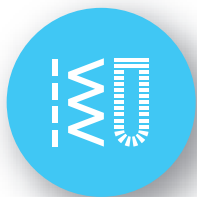
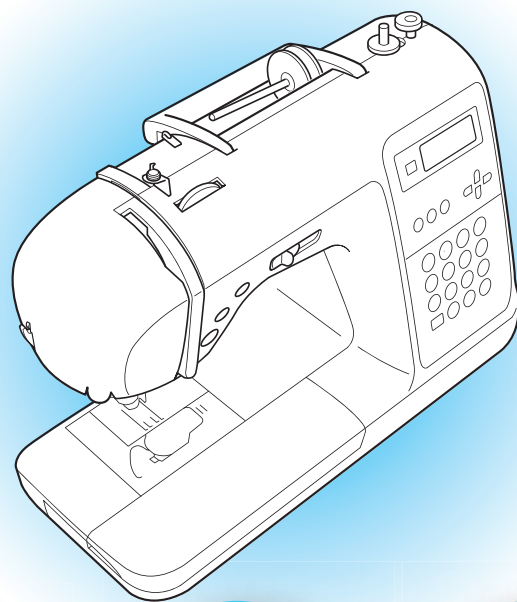
Stručná referenční příručka

Gyors útmutató

Skrócona instrukcja obsługi

Ръководство за бързи справки

Ghid de referință rapidă



Refer to the operation manual for detailed instruction.

Podrobný návod naleznete v uživatelské příručce.

A részletes utasításokért lásd a Használati utasítást.

Szczegółowe informacje znajdują się w instrukcji obsługi.

За подробни инструкции, направете справка с ръководството за работа.

Pentru instrucțiuni detaliate consultați manualul de utilizare.

Contents

Obsah
Tartalomjegyzék
Spis treści
Съдържание
Cuprins



Bobbin winding and setting

2

Navíjení cívky a nastavení
Orsó csévélése és beállítása
Ustawienie i nawijanie bębenka
Навиване и поставяне на калерчето
Bobinarea și instalarea bobinei



Upper threading

4

Zavedení horní niti
Felsőszál befűzése
Nawlekanie górnej nici
Вдяване отгоре
Înfilarea firului superior



Selecting stitch patterns

6

Výběr typů stehů
Öltési minták kiválasztása
Wybieranie wzorów ściegów
Избиране на шаблони на шев
Selectarea modelelor de cusături



Combining and saving patterns

9

Kombinace a ukládání vzorů
Minták kombinálása és mentése
Łączenie i zapisywanie wzorów
Комбиниране и запаметяване на шаблони
Combinarea și salvarea modelelor



Saved patterns' memo

10

Paměť uložených vzorů
Mentett minták emlékeztetője
Przypomnienie zapisanych wzorów
Бележка за запаметени шаблони
Memo modele salvate

Summary of stitch patterns

11

Shrnutí vzorů stehů
Öltési minták összgezése
Podsumowanie zapisanych wzorów
Кратко изложение на шаблони на шев
Lista cu modelele de cusături

Bobbin winding and setting



Navíjení cívky a nastavení Orsó csévélése és beállítása Ustawienie i nawijanie bębenka Навиване и поставяне на калерчето Bobinarea și instalarea bobinei

Use only the included bobbin or bobbins of the same type.

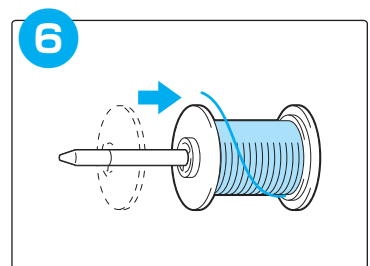
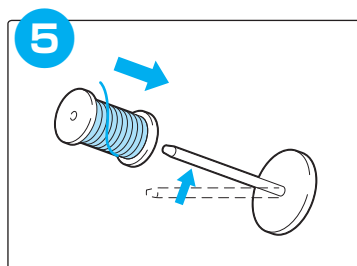
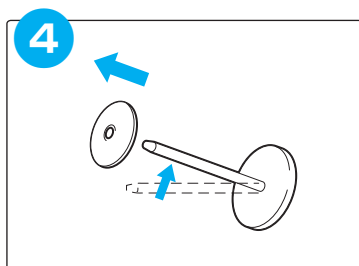
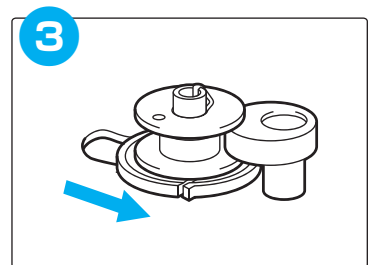
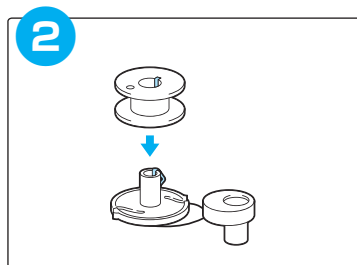
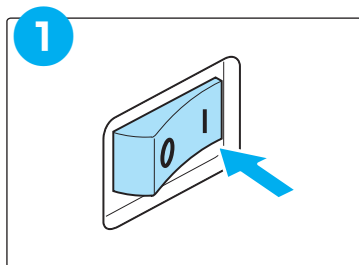
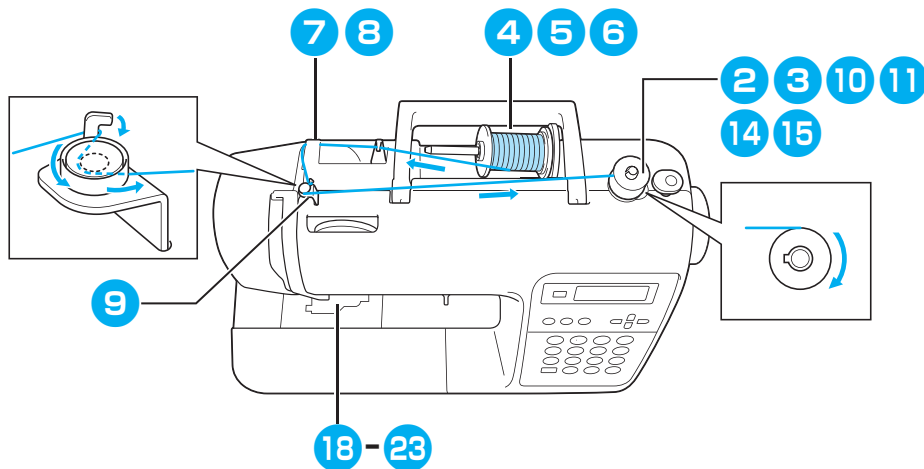
Používejte pouze přiloženou cívku nebo cívky stejného typu.

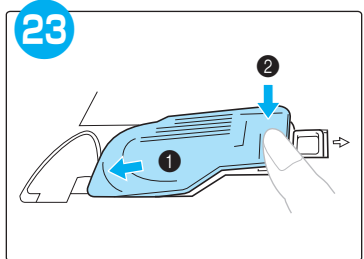
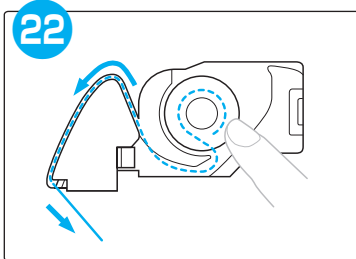
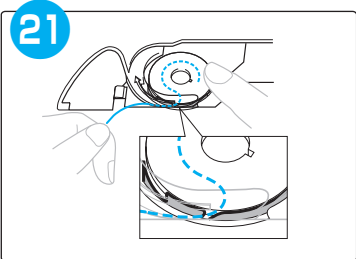
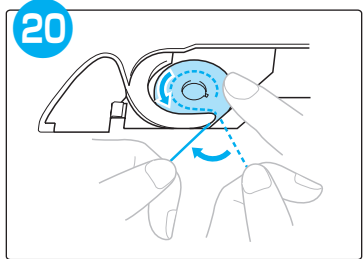
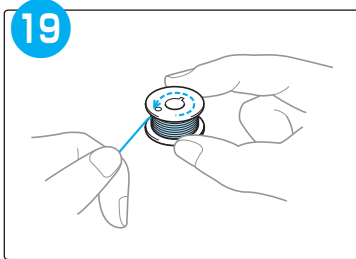
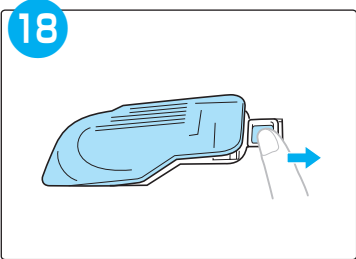
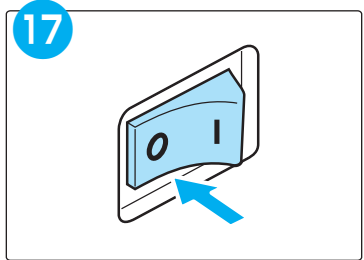
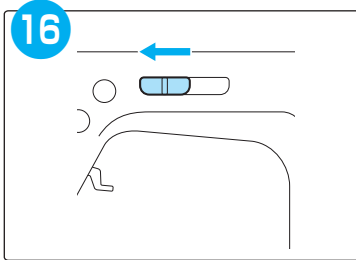
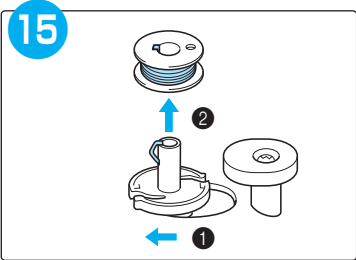
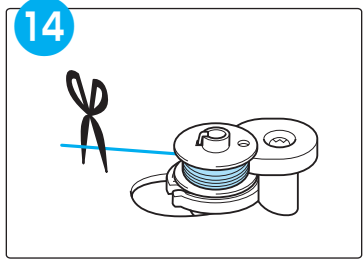
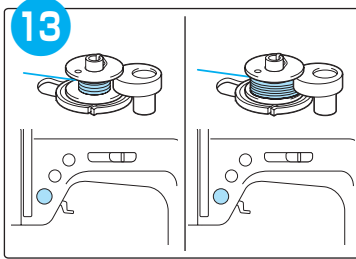
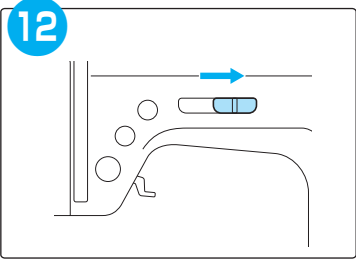
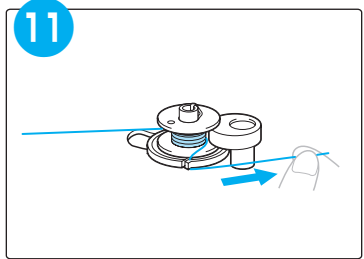
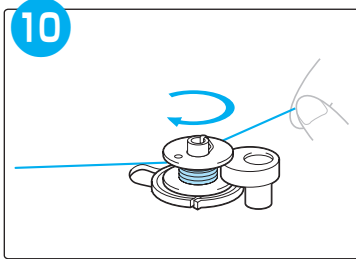
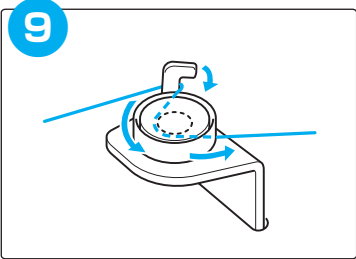
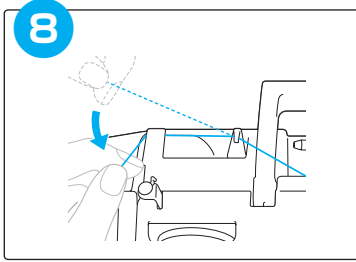
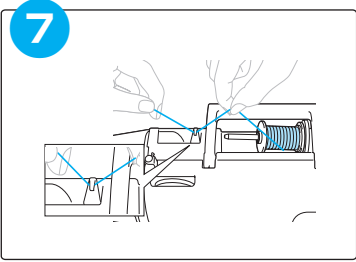
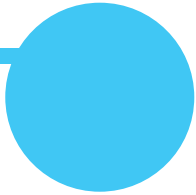
Csak a mellékelt orsót vagy azzal megegyező típusú orsókat használjon.

Używaj wyłącznie bębenka dołączonego do maszyny lub bębenków tego samego rodzaju.

Използвайте само доставеното калерче или калерчета от същия тип.

Folosiți doar bobina primită odată cu mașina sau bobine de același tip.

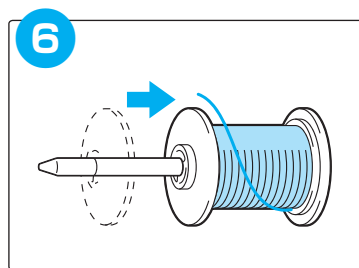
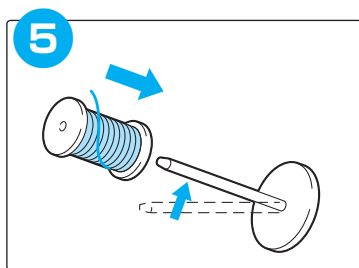
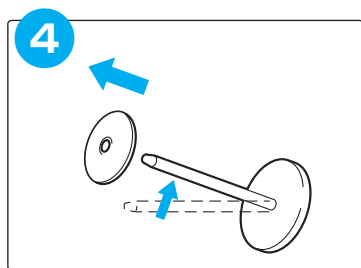
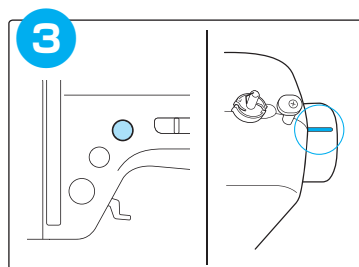
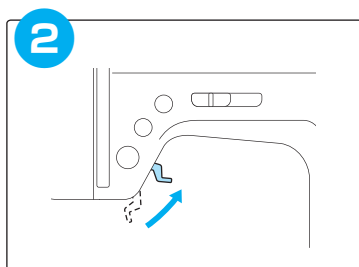
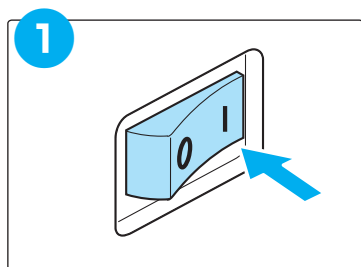
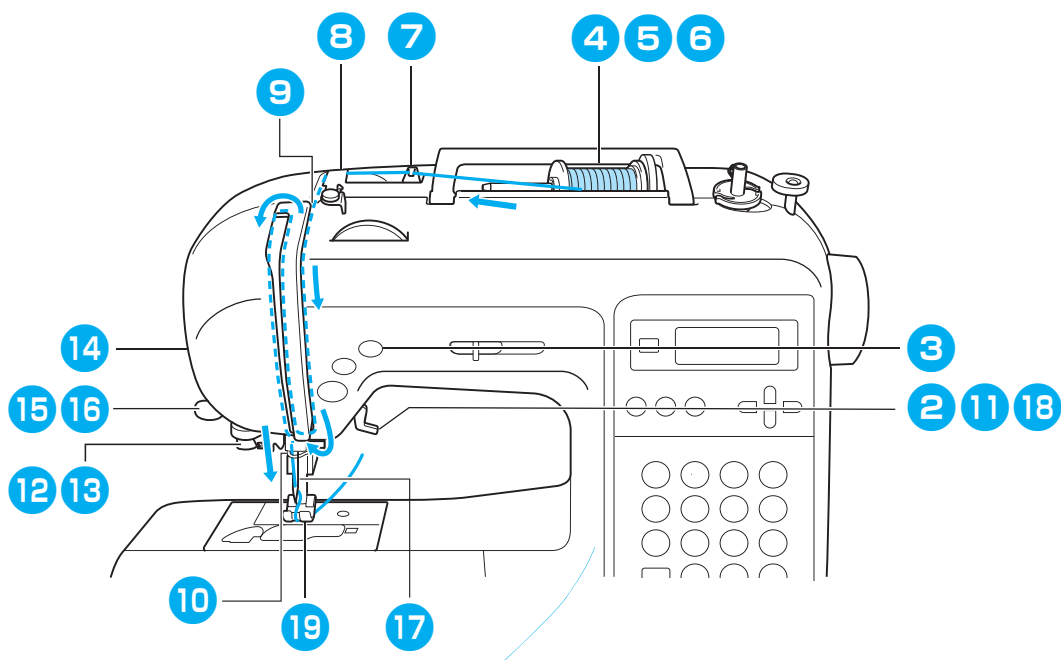


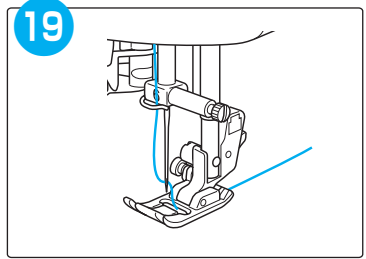
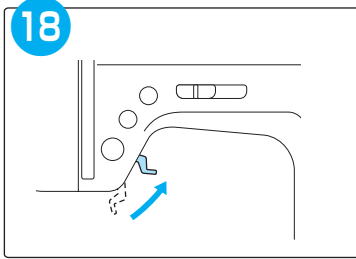
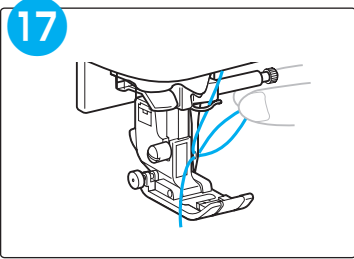
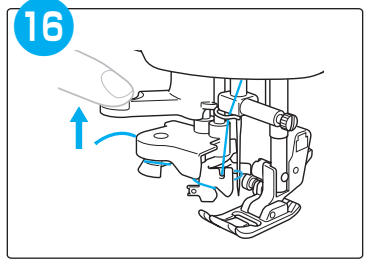
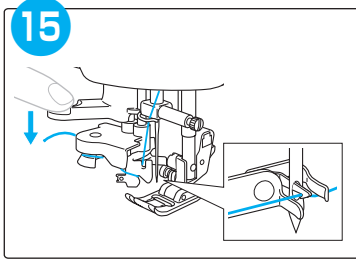
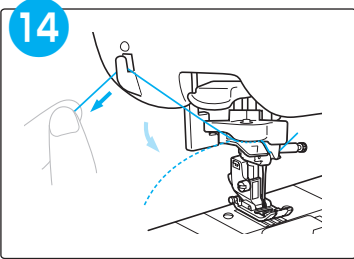
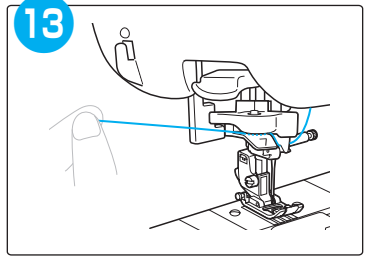
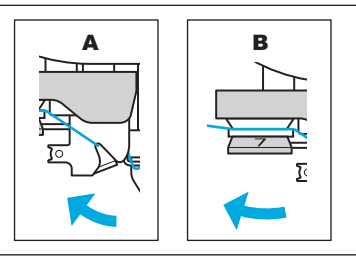
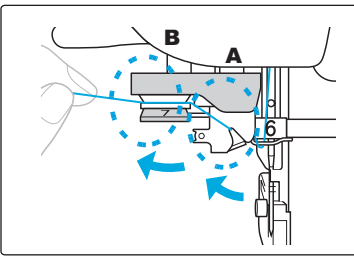
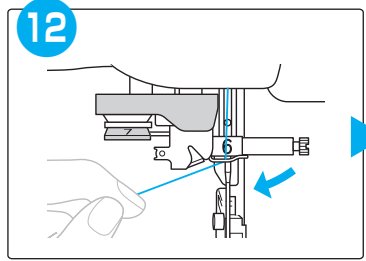
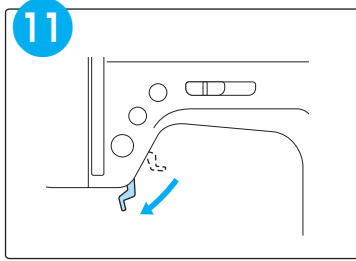
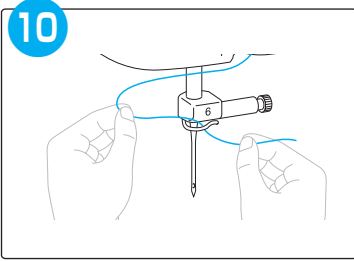
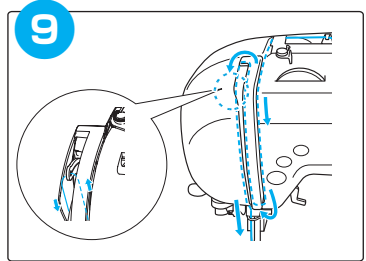
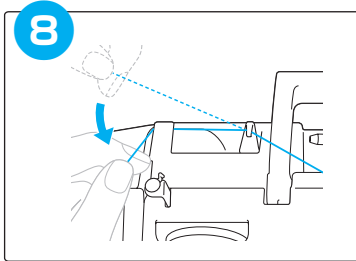
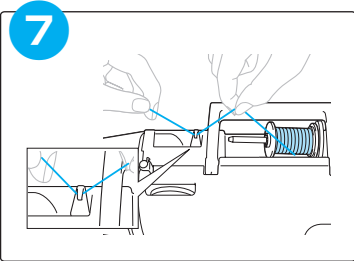




Upper threading

Zavedení horní niti
Felsőszál befűzése
Nawlekanie górnej nici
Вдяване отгоре
Înfilarea firului superior





Selecting stitch patterns

Výběr typů stehů

Öltési minták kiválasztása

Wybieranie wzorów ściegów

Избирание на шаблони на шев

Selectarea modelelor de cusături

Preset utility stitch/ saved pattern

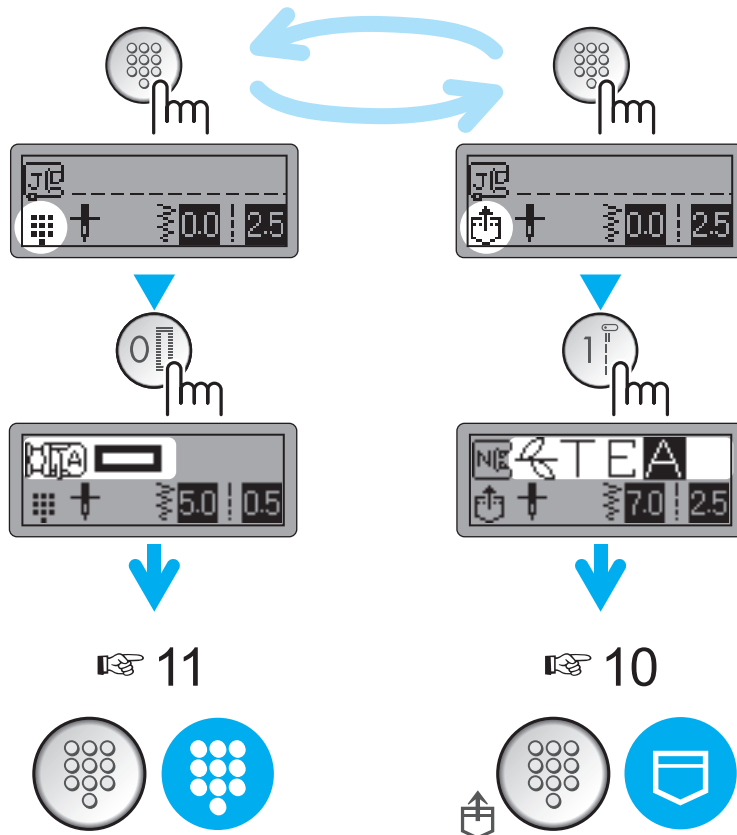
Přednastavený užitečný
steh/
uložený vzor

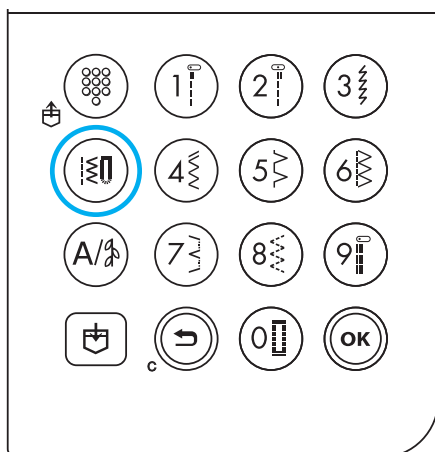
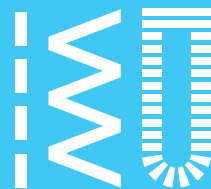
Előre beállított
rögzítőöltés/
mentett minta

Wbudowany ścieg
użytkowy/
zapisany wzór

Предварительно зададен
помощен шев/
запамятен шаблон

Presetare cusături
utilitare/
model salvat





Utility stitches

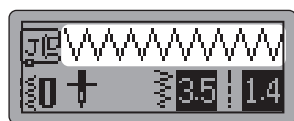
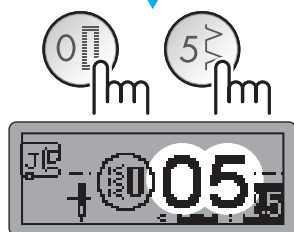
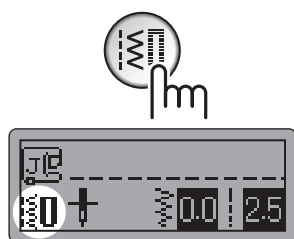
Užitkové stehy

Rögzítőöltések

Ściegi użytkowe

Помощни шевове

Cusături utilitare



11



A/g

Utility decorative stitches

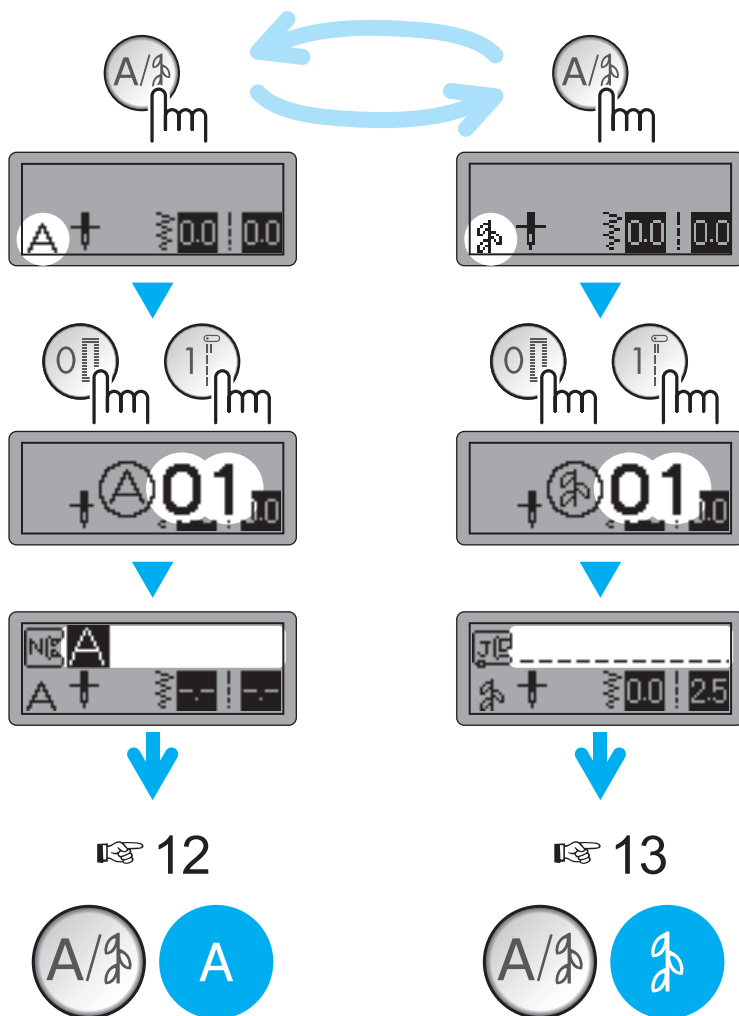
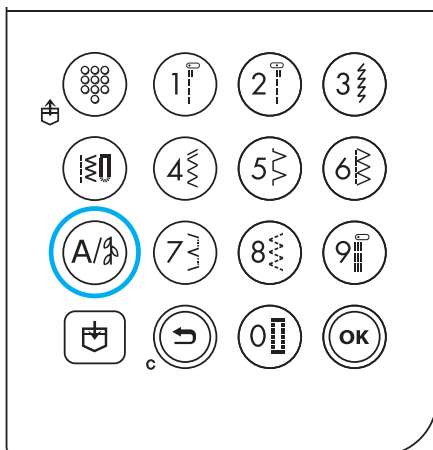
Užitkové dekorativní stehy

Díszítő rögzítőöltések

Ściegi użytkowe ozdobne

Помощни декоративни шевове

Cusături decorative utilitare



Combining and saving patterns

Kombinace a ukládání vzorů
Minták kombinálása és mentése
Łączenie i zapisywanie wzorów
Комбиниране и запаметяване на шаблони
Combinarea și salvarea modelelor

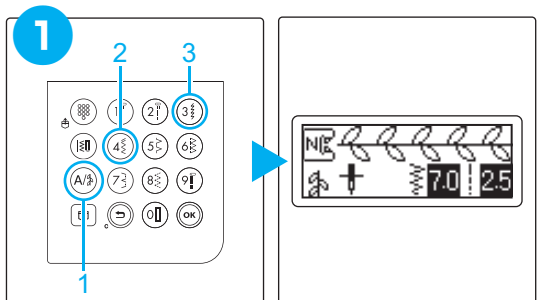


Example: Příklad: Pélida: Przykład: Пример: Exemplu:

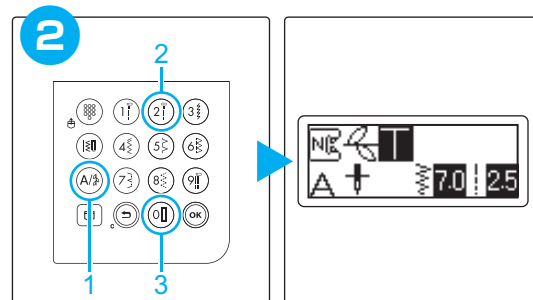
 TEA

Combining patterns Kombinace vzorů/ Minták kombinálása/ Łączenie wzorów/ Комбиниране на шаблони/ Combinarea modelelor

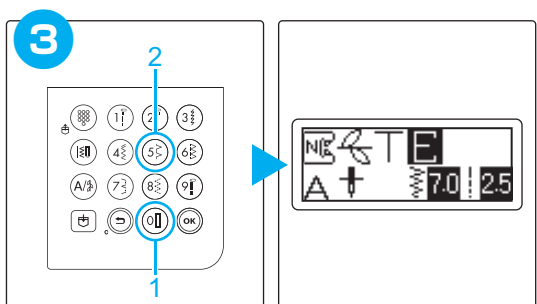
1



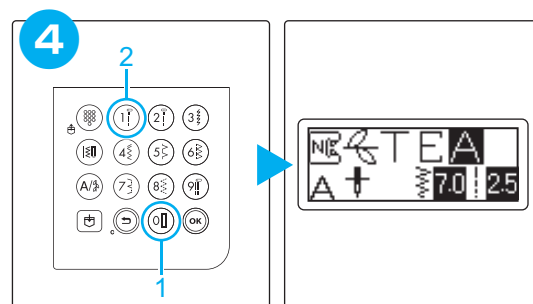
2



3

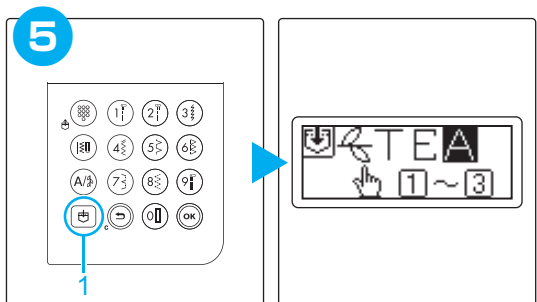


4

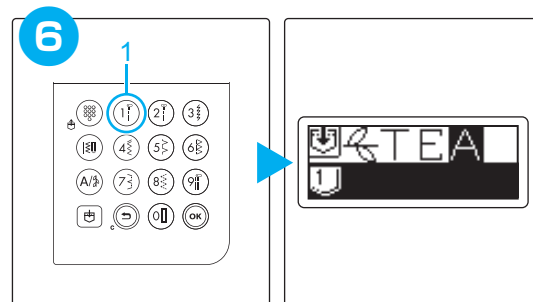


Saving patterns Ukládání vzorů/ Minták mentése/ Zapisywanie wzorów/ Запаметяване на шаблони/ Salvarea modelelor

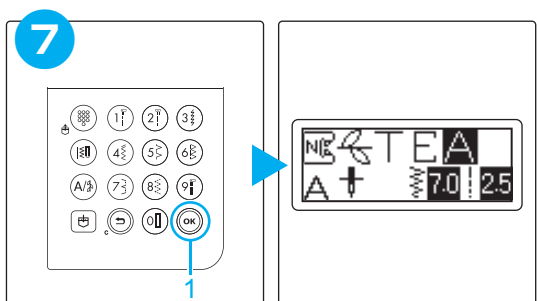
5



6



7





Saved patterns' memo

Paměť uložených vzorů
Mentett minták emlékeztetője
Przypomnienie zapisanych wzorów
Бележка за запаметени шаблони
Memo modele salvate



Saved patterns Uložené vzory/ Elmentett minták/ Zapisane wzory/ Запаметени шаблони/
Modele salvate

Summary of stitch patterns

Shrnutí vzorů stehů

Öltési minták összegzése

Podsumowanie zapisanych wzorów

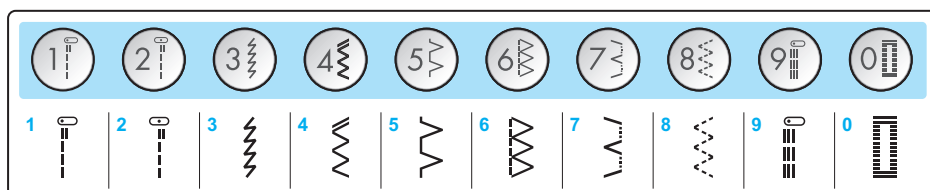
Кратко изложение на шаблони на шев

Lista cu modelele de cusături



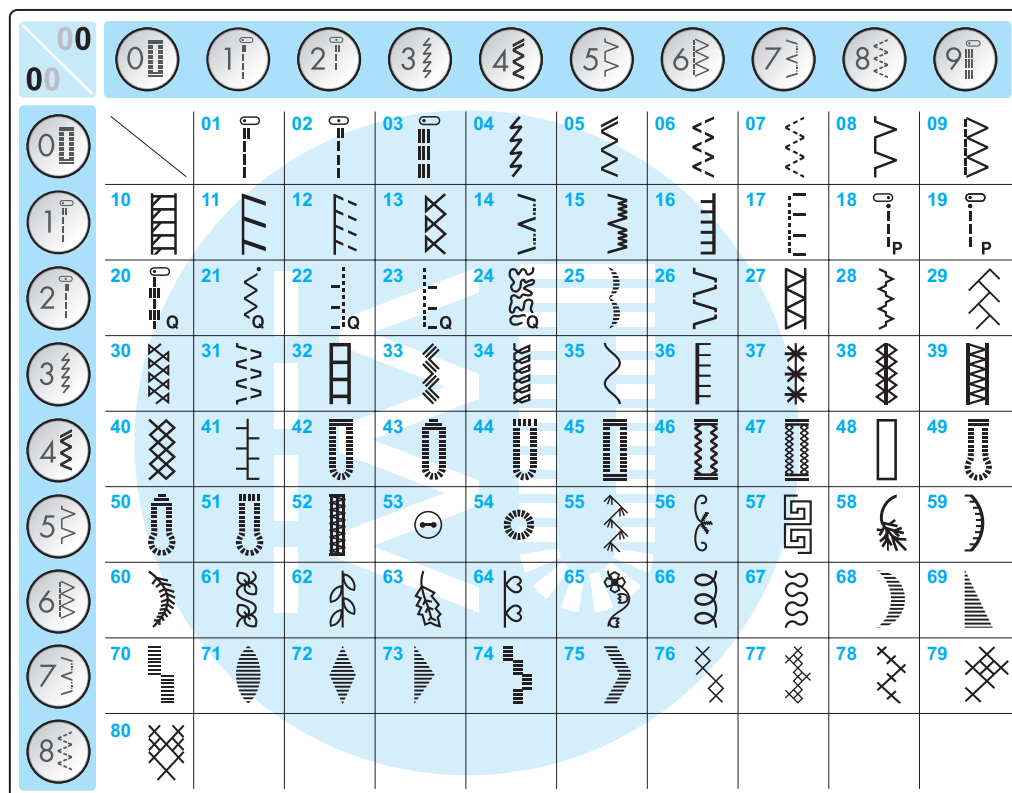
Preset utility stitch

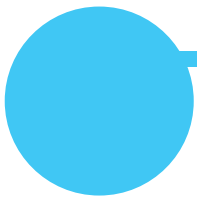
Přednastavený užitkový steh/ Előre beállított rögzítőöltés/
Wbudowany ścieg użytkowy/ Предварительно задан помощен шев/ Presetare cusături utilitare



Utility stitches

Užitkové stehy/ Rögzítőöltések/ Ściegi użytkowe/ Помощни шевове/
Cusături utilitare





Character stitches Stehy ve tvaru písmen/ Karakteröltések/ Ściegi literowe/
Шевове за цифри и букви/ Cusături pentru monograme

00	01	02	03	04	05	06	07	08	09
00	01	02	03	04	05	06	07	08	09
01	A	B	C	D	E	F	G	H	I
10	J	K	L	M	N	O	P	Q	R
20	T	U	V	W	X	Y	Z	&	?
30	-	0	1	2	3	4	5	6	7
40	9	'	,	.	()	-	Ä	Å
50	Ñ	Ö	Ø	Ç	Ü	β			



Utility decorative stitches Užitočné dekoratívne stehy/ Diszítő rögzítőöltések/
 Ściegi użytkowe ozdobne/ Помощни декоративни шевове/ Csűrturi decorative utilitare

00	0	1	2	3	4	5	6	7	8	9
00		01	02	03	04	05	06	07	08	09
1	10	11	12	13	14	15	16	17	18	19
2	20	21	22	23	24	25	26	27	28	29
3	30	31	32	33	34	35	36	37	38	39
4	40	41	42	43	44	45	46	47	48	49
5	50	51	52	53	54	55	56	57	58	59
6	60	61	62							

