



123 Flash Chat Server Software

User Manual

Version 6.7

<http://www.123flashchat.com>

Powered by [TOPCMM](#)



TABLE OF CONTENTS

1. Introduction	3
2. Requirements	4
2.1 Server Requirements.....	4
2.1.1 Supported Platforms	4
2.1.2 Hardware requirements.....	4
2.1.3 Java Virtual Machine(JVM) Requirements	4
2.1.4 Port requirements.....	5
2.2 Client Requirements	5
2.2.1 Hardware Requirements	5
2.2.2 Flash Player Requirements	5
3. Installation	5
3.1 Overview the files:.....	6
3.2 Installing the Chat Server	6
3.2.1 Windows NT/2k/XP/2003.....	6
3.2.2 Windows Vista	10
3.2.3 Linux.....	11
3.2.4 Mac Operating System.....	15
3.2.5 Other Unix Operating System	16
3.3 Web server.....	17
3.4 Insert code.....	17
3.4.1 Easy Way	18
3.4.2 Advanced Way.....	18
4. Configuration.....	21
4.1 Server Configuration	21
4.1.1. fcserver.xml	21
4.1.2 Default.xml.....	25
4.1.2.9 <room_id>.xml	33
4.2 Client Configuration.....	35
4.2.1 client.xml.....	35
4.2.2 Skin configuration.....	41
4.2.3 Predefined Message.....	42
4.2.4 Change Private Message Location	42
4.2.5 flashEmotion configuration	43
4.3 Client Admin Panel.....	43
4.4 Integrate database configuration.....	46
5. Chat Modules.....	50
5.1 Moderated chat module	50
5.2 Invisible admin chat module	50
5.3 Change nickname module.....	50
5.4 Pocket-pc & banner chat module.....	51



5.5	Audio-Video module.....	51
5.6	Encrypt-message chat module	52
5.7	Event-chat module	52
5.8	Image-transfer module	52
5.9	White-board Module.....	53
5.10	Flash-Media-Server Setting:	54
5.11	Buddy-List Module.....	55
6. How to customize chat skin		55
7. Programmer's tools		56
7.1	Server API	57
7.1.1	Get Server Running Status from the files.....	57
7.1.2	Send command to server to operate or get real-time data	57
7.2	Client Parameters	61
7.2.1	init_user and init_password.....	61
7.2.2	init_nickname.....	63
7.2.3	init_root	64
7.2.4	init_room and init_room_pwd	65
7.2.5	init_lang	66
7.2.6	init_skin.....	66
7.2.7	admin_mode	67
7.2.8	init_ad	68
7.2.9	loading_bkground.....	69
7.2.10	init_private and init_private_message.....	70
7.2.11	Init_listroom.....	71
7.2.12	init_invisible.....	72
8. Lite Client.....		73
9. User Profile Interface		73
10. Cross Proxy		75

1. Introduction

123 Flash Chat Server Software is a real-time, powerful, high performance chat server produced by TopCMM Software Corp. (<http://www.topcmm.com/>). This user manual contains clearly labeled diagrams and instructions for how to install, use, and administrate 123 Flash Chat Server Software for your own use. The demonstration version of 123 Flash Chat Server Software is a free way to test the paid version. The demonstration includes every feature of the full version, however, the user's connection will be lost every ten minutes.

The latest information concerning 123 Flash Chat Server Software can be found by visiting <http://www.123flashchat.com>.

If you are interested in purchasing this software online, please go to

[TopCMM Software
http://www.123flashchat.com](http://www.123flashchat.com)



<http://www.123flashchat.com/buy.html>. Thank you!

2. Requirements

2.1 Server Requirements

2.1.1 Supported Platforms

- Windows 95/98/NT/ME/2000/XP/Vista
- Solaris/Sparc 2.6, 7,8,9
- Solaris/Intel 2.6,7,8,9
- Compaq Tru64
- IRIX
- HP-UX 10.20, 11
- AIX 4.3.x
- Linux Redhat 6.3, 7.1, 7.2, 7.3, 9
- Linux Caldera
- TurboLinux
- Mac OS Classic 8.1 - 9.X
- Mac OS X 10.0 - 10.1
- Mac OS X Server

2.1.2 Hardware requirements

123 Flash Chat Server Software will be compatible with most server hardware.

The minimum hardware requirements are as follows:

- 586/200 MHz or faster processor
- 64 MB of RAM or more
- 100 MB free hard disk space or more

Dedicated PII/400 MHz with 256 MB RAM is eligible to handle 500 or more concurrent users. Adding extra RAM and processors will improve the performance of 123 Flash Chat.

2.1.3 Java Virtual Machine(JVM) Requirements

A Java Virtual Machine (JVM), or a Java Developer Kit (JDK), fully compliant with the Sun J2SDK 1.4.x is required to run the 123 Flash Chat server. We recommend J2SDK 1.4.2 or a higher version.



For the current version of JDK, visit <http://java.sun.com/>.

Note: The Windows and Linux versions of 123 Flash Chat Server Software now include the Sun J2SDK 1.4.2 so it won't be necessary to install JDK again.

2.1.4 Port requirements

123 Flash Chat Server Software needs at least ONE free port. The default port is: 51127
123 Flash Chat Server Software can listen to two ports simultaneously to guarantee the accessibility:

a low one (<1024) and a high one (1024~65535).

To ensure your users don't have to configure a firewall before accessing 123 Flash Chat, the low port can be set to 80 or 443, since it is allowed by most users' firewalls.

But remember, ports below 1024 can only be accessed using flash player 7 or 8. That's why you may set a high port (1024~65535) to serve lower version flash player.

123 Flash Chat Server Software has a built-in web server JUST for testing purpose. The default port value for this web server is 35555.

For more detailed instructions on ports, please refer to the: [Server Configuration Section](#) of this guide.

2.2 Client Requirements

2.2.1 Hardware Requirements

- 586/166 MHz or faster processor
- 64 MB of RAM or more.

2.2.2 Flash Player Requirements

The client will need Macromedia Flash Player 6 or above to use the flash chat client.

If users do not have flash player 6 or higher installed, they will be notified of these requirements and automatically directed to [Macromedia Download Center](#) to download Macromedia Flash Player for free.

3. Installation

Two main versions of 123 Flash Chat Server Software are available, one is for Windows and the other for Linux. Both include J2SDK1.4.2.



For operating systems other than Windows or Linux, before installing 123 Flash Chat Server, J2SDK1.4.x must be downloaded by visiting <http://java.sun.com> and installed.

The installation will include two parts:

1. Installing the chat server
2. Configuring a web server and embed the chat client to your webpage

3.1 Overview the files:

It contains the following folders:

- /client
 - ad
 - banner
 - flashEmotion
 - help
 - lang
 - skin
- /doc
- /server
 - data
 - default
 - ◆ logs
 - ◆ members
 - ◆ message
 - ◆ rooms
 - ◆ userinfo
 - etc
 - groups
 - database
 - lib
 - logs
 - wrapper_win32
- /readme.txt

3.2 Installing the Chat Server

3.2.1 Windows NT/2k/XP/2003

Follow the steps below to install the latest Windows version of 123 Flash Chat Server

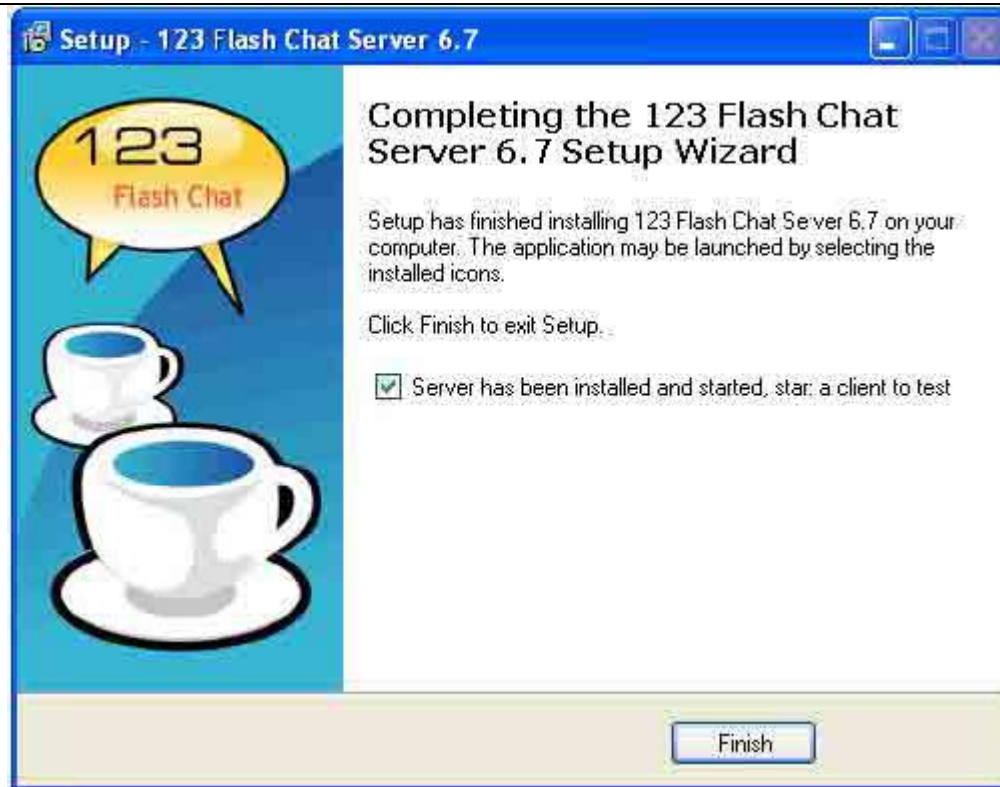


1. Download the latest Windows version of 123 Flash Chat Server Software at:
<http://www.123flashchat.com/download.html>, get the file: **123flashchat.exe**
2. Double click "123flashchat.exe". It will take a few minutes to install just following the simple instructions in it.



3. After 123 Flash Chat Server has been installed, wait a few seconds while 123 Flash Chat Server as a Windows NT service is automatically started(Usually you don't have to start it manually).

123 Flash Chat Server as a Windows NT service will automatically load and start after each reboot of your server computer.



4. Start the chat server.

This can be done by starting the server in service mode or console mode, if it was stopped before. These modes are explained below:

a) Starting in service mode:

(In the Windows system)

start->program->123 flash chat server 6.0 -> Server->start 123 flash chat server.



If an error occurs, probably the chat server is already started before or there is a problem with the server configuration. To check what type of error it is, please start in console mode.

b) Starting in console mode:

(In the Windows system)

start->program->123 flash chat server 6.0->control->start 123 flash chat server (console mode).

Usually you will see something similar to the screen below:



```
Start 123 Flash Chat server (Console mode)

== ->->->-> www.123flashchat.com <-<-<-< ==
Welcome to try 123 Flash Chat Server software!
This is a demo version of 123 Flash Chat Server 6.7 (build 20070711)
Demo version will disconnect the user after logging in for 10 minutes!
Get the full version: http://www.123flashchat.com/buy.html
== ->->->-> www.123flashchat.com <-<-<-< ==

Starting the server ...
Set System Timezone GMT+8
Loading ip-to-country data ...
Loading connection policy ...
Starting http server...
Starting the tcp server ...
Starting the http server on: 0.0.0.0/0.0.0.0:35555
Start Check Chat Time
Starting the chat server on: 0.0.0.0/0.0.0.0:51127
123 Flash Chat Server has been Started!
You can open this url to test: http://192.168.0.100:35555
```

Console mode is helpful to check error details.

Console mode does not need to be used unless there is a problem with the process of starting the chat server. After fixing the problem, it is recommended to stop chat server and start again in service mode.

5. To stop chat server:

a) If you are in service mode, please stop the server in the following way:

start->program->123flash chat server 6.0->server->stop 123 flash chat server.

b) If you are in console mode, please stop the server by simply closing the pop-up DOS window.

```
Stop 123 Flash Chat Server

wrapper : Stopping the 123 Flash Chat Server 6.7 service...
wrapper : 123 Flash Chat Server 6.7 stopped.
Press any key to continue . . .
```

6. To restart chat server:

a) If you are in service mode, please restart the server in following way:

Start->program->123 flash chat server 6.0->server->restart 123 flash chat server.

b) If you are in console mode, please close the DOS window firstly, and restart the server in following way:



start->program->123 flash chat server 6.0->server-> restart 123 flash chat server

Note: After configuring the server parameter manually, you have to restart the chat server to make the changes effective.

Note: Windows 98 and Windows ME do not support NT service. If you need to run the chat server on a Windows 98 or Windows ME server you should open Notepad to create a file with following code (in one single line):

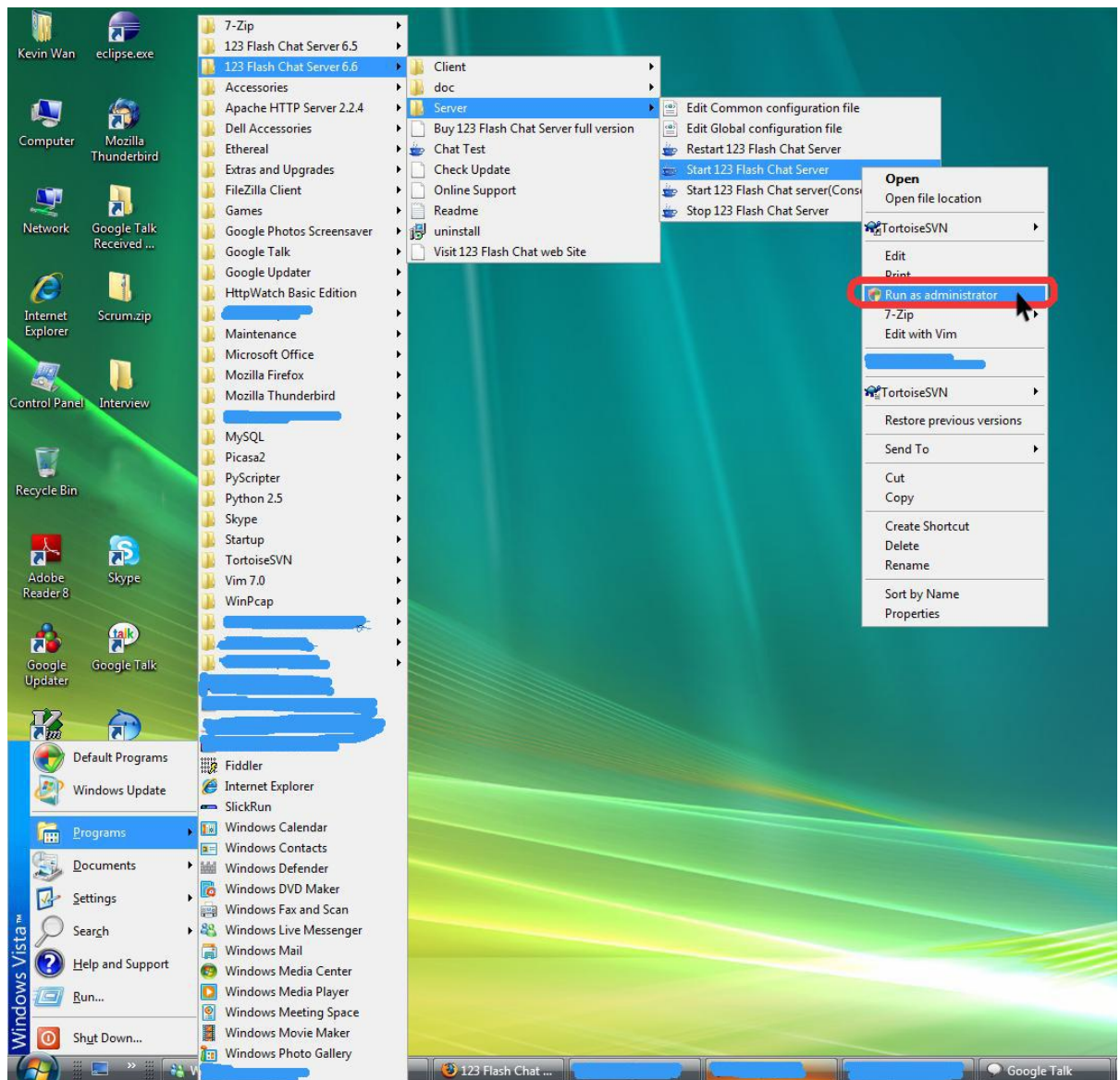
```
jre\bin\java -classpath  
"jre\lib\sunrsasign.jar;jre\lib\rt.jar;jre\lib\plugin.jar;jre\lib\jsse.jar;jre\lib\jce.jar;jre\lib\charsets.jar;lib  
\fcserver.jar;lib\moderator.jar;lib\log4j.jar;lib\xerces.jar;lib\jdom.jar;lib\mysql.jar"  
com.topcmm.jchat.FCServer
```

Save it as a *.bat file to 123flashchat installed directory, for example, start98.bat, then open DOS window:

```
cd <123flashchat_installed_directory>\server  
start98.bat
```

3.2.2 Windows Vista

If you got an error message "wrapper | OpenSCManager failed" when you start, stop or restart the chat server program, you can right-click the program you wish to run, and select the option "RunAsAdministrator" to run the program successfully.



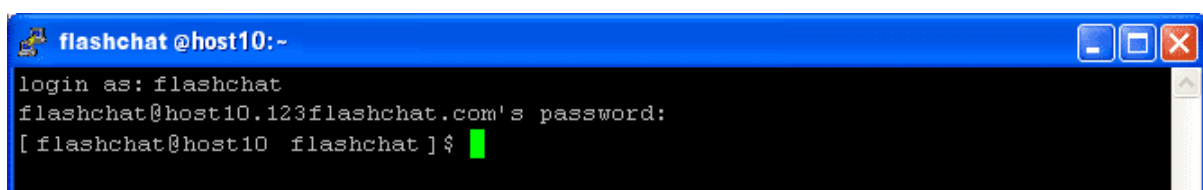
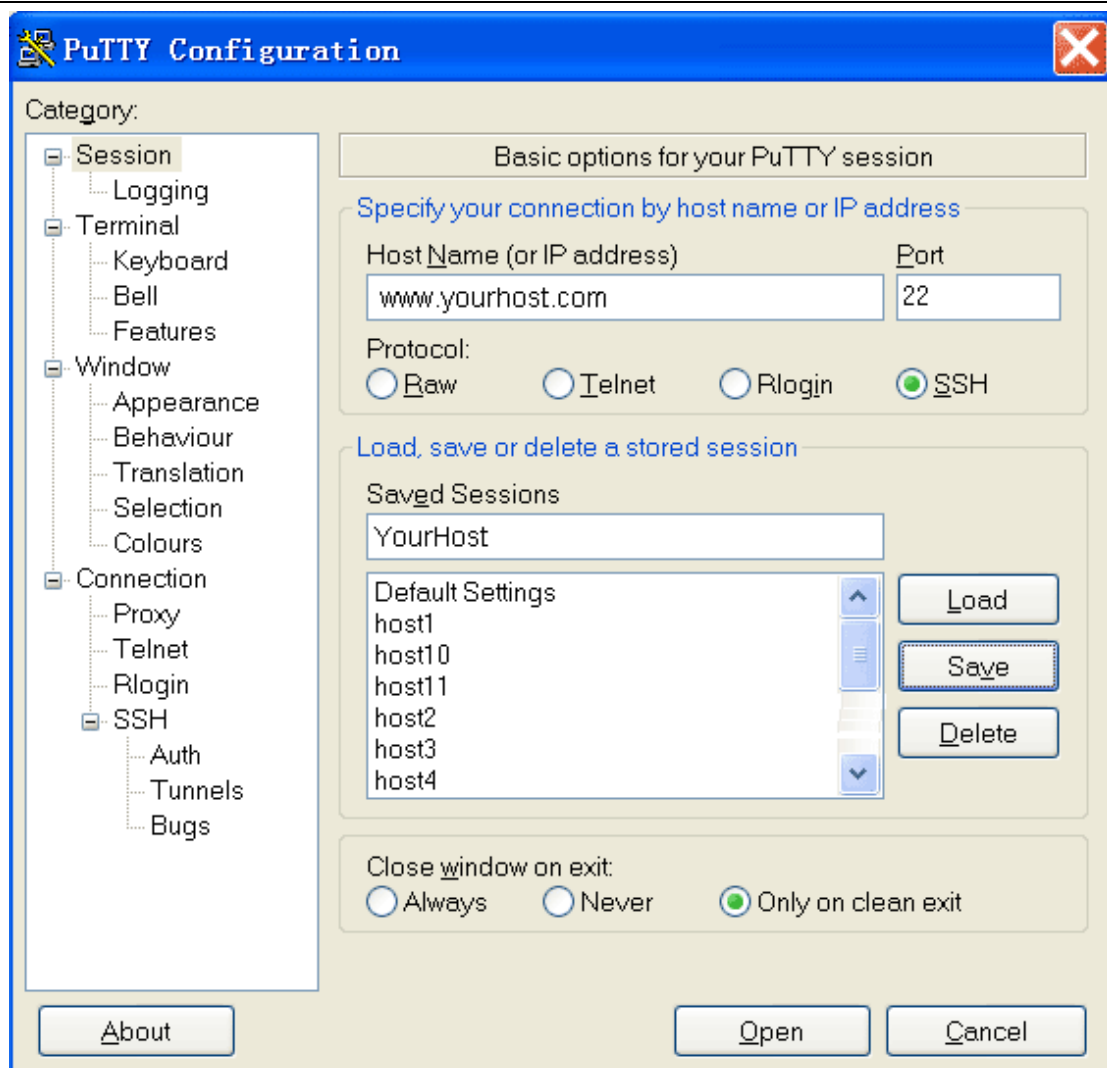
3.2.3 Linux

1. If you are in a local Linux console window, please skip this step.

If you need to remote control Linux server, then please telnet or SSH to your Linux server first with SSH/telnet client software like Putty. Putty can be downloaded for free from:

<http://www.chiark.greenend.org.uk/~sgtatham/putty/download.html>

Then login to your server as shown below:



2. Download the latest Linux version of 123 Flash Chat Server Software at:

<http://www.123flashchat.com/download.html>,

Select the file: **123flashchat.tar.gz**

You can download it by using this command:

\$ wget http://www.123flashchat.com/download/123flashchat.tar.gz



```
123flashchat@topcmm:~  
login as:123flashchat  
123flashchat@host10.123flashchat.com's password:  
[123flashchat@topcmm 123flashchat]$ wget http://www.123flashchat.com/download/  
123flashchat.tar.gz  
--22:52:06-- http://www.123flashchat.com/download/123flashchat.tar.gz  
=> `123flashchat.tar.gz'  
Resolving www.123flashchat.com... done.  
Connecting to www.123flashchat.com[69.93.110.158]:80... connected.  
HTTP request sent, awaiting response... 200 OK  
Length: 22,950,828 [application/x-gzip]  
  
100%[=====>] 22,950,828 919.43K/s ETA 00:0  
  
22:52:30 (919.43 KB/s) - `123flashchat.tar.gz' saved [22950828/22950828]
```

3. Uncompress the 123flashchat.tar.gz

\$ tar xzf 123flashchat.tar.gz

4. Start the server manually:

\$ cd 123flashchat/server

\$./fcserver.sh start



```
123flashchat@topcmm:~/123flashchat/server
[123flashchat@topcmm ~]$ cd 123flashchat/server
[123flashchat@topcmm 123flashchat]$ ./fcserver.sh start
starting server .....
[123flashchat@topcmm 123flashchat]$
-----=>->->-> www.123flashchat.com <-<-<-< ==-----
Welcome to try 123 Flash Chat Server software!
This is a demo version of 123 Flash Chat Server 6.7 (build 0520)
Demo version will disconnect the user after logging in for 10 minutes!
Get the full version: http://www.123flashchat.com/buy.html
-----=>->->-> www.123flashchat.com <-<-<-< ==-----

Starting the server ...
Set System Timezone GMT+8
Loading ip-to-country data ...
Loading connection policy ...
Starting http server...
Starting the tcp server ...
Starting the http server on: 0.0.0.0/0.0.0.0:35555
Start Check Chat Time
Starting the chat server on: 0.0.0.0/0.0.0.0:51127
123 Flash Chat Server has been Started!
You can open this url to test: http://<your_server_ip_address>:35555
Replace <your_server_ip_address> with the real one
```

5. Stop the server manually:

`$. /fcserver.sh stop`

```
123flashchat@topcmm:~/123flashchat/server
[123flashchat@topcmm 123flashchat]$ ./fcserver.sh stop
Stopping server .....
Server stoped
[123flashchat@topcmm 123flashchat]$
```

6. Restart the server manually:

`$. /fcserver.sh restart`



```
123flashchat@topcmm: ~/123flashchat/server
[123flashchat@topcmm 123flashchat]$ ./fcserver.sh restart
Stopping server .....
Server stoped
Starting server .....
[123flashchat@topcmm 123flashchat]$
===== ->->->-> www.123flashchat.com <-<-<-< =====
Welcome to try 123 Flash Chat Server software!
This is a demo version of 123 Flash Chat Server 6.7 (build 0520)
Demo version will disconnect the user after logging in for 10 minutes!
Get the full version: http://www.123flashchat.com/buy.html
===== ->->->-> www.123flashchat.com <-<-<-< =====

Starting the server ...
Set System Timezone GMT+8
Loading ip-to-country data ...
Loading connection policy ...
Starting http server...
Starting the tcp server ...
Starting the http server on: 0.0.0.0/0.0.0.0:35555
Start Check Chat Time
Starting the chat server on: 0.0.0.0/0.0.0.0:51127
123 Flash Chat Server has been Started!
You can open this url to test: http://<your_server_ip_address>:35555
Replace <your_server_ip_address> with the real one
```

7. How to auto start chat server after rebooting your server?

It can be done following the steps below:

Step 1:

Modify "fcserver.sh", find the **FCSERVER_HOME** section, and configure the directory of "fcserver.sh".

For example, if you uncompress the 123flashchatserver.tar.gz into /usr/local/123flashchat, make sure "fcserver.sh" is in the directory of /usr/local/123flashchat, then remove the "#" before the two rows below in "fcserver.sh":

```
FCSERVER_HOME=/usr/local/123flashchat/server
export FCSERVER_HOME
```

Step 2:

Modify /etc/rc.local file, add one row:

```
/usr/local/123flashchat/server/fserver.sh
```

Just replace "/usr/local/123flashchat/" with your FCSERVER_HOME value.

3.2.4 Mac Operating System

1. Download the latest version of 123 Flash Chat Server Software(without JVM) from:

<http://www.123flashchat.com/download.html>

Select the file: 123flashchat_s.tar.gz

2. Uncompress the 123flashchat_s.tar.gz



```
$gzip -d 123flashchat_s.tar.gz  
$ tar xf 123flashchat_s.tar
```

3. Start 123 Flash Chat Server:
\$/fcserver_mac.sh start
4. Stop 123 Flash Chat Server:
\$/fcserver_mac.sh stop
5. Restart 123 Flash Chat Server:
\$/fcserver_mac.sh restart

3.2.5 Other Unix Operating System

1. Download the latest version of 123 Flash Chat Server Software (without JVM) from:
<http://www.123flashchat.com/download.html>,
Select the file: **123flashchatserver_s.tar.gz**
2. Uncompress the 123flashchatserver_s.tar.gz
\$ gzip -d 123flashchatserver_s.tar.gz
\$ tar xf 123flashchatserver_s.tar
3. Make sure Sun j2sdk 1.4.x or a newer version is already installed in your system. If it is not, download it from: <http://java.sun.com/>
4. Set the Java variable and edit the system PATH variable in /etc/profile:

```
JAVA_HOME=/usr/local/j2sdk1.4.x;export JAVA_HOME  
CLASSPATH=$JAVA_HOME/lib/dt.jar:$JAVA_HOME/lib/tools.jar  
PATH=$PATH:/usr/java/j2sdk1.4.x/bin;export PATH
```

5. Start 123 Flash Chat Server.
Remember to type all code below in a single line.

```
$ java -classpath CLASSPATH:lib/fcserver.jar:lib/moderator.jar:lib/changenick.jar: lib/  
invisibleadmin.jar:lib/serverapi.jar:lib/robotmessage.jar:lib/fclib.jar:lib/log4j.jar:lib/jdom  
.jar:lib/xerces.jar com.topcmm.jchat.FCServer &
```

Note: For “Sun Solaris”, we strongly recommend the patch for J2SDK to be installed before installing the 123 Flash Chat Server Software. This will ensure the stability of the multi-thread Java application,

The patch can be obtained from: <http://sunsolve.sun.com/pub-cgi/show.pl?target=patches/J2SE>



Tip: If you are still experiencing problems and require help with installing the Java software, please contact your system administrator. Alternatively you can contact us via email at support@123flashchat.com

Please make sure to include the details of your operating system.

If you have purchased 123 Flash Chat Server Software, please also include your name, purchase email and user license, we'll provide a preferential support to buyer. Those who have purchased the unlimited user license version of 123 Flash Chat will get priority and will also receive a lifelong upgrade and technical support for free.

3.3 Web server

123 Flash Chat Server Software includes a temporary web server JUST for testing purpose. But when you launch the 123 Flash Chat Server officially, a professional web server is strongly recommended, such as Apache, IIS, etc.

To integrate the chat client to a web server other than the built-in web server, please follow the steps below:

a) copy the “client” folder

Copy the “client” folder to the web directory of your web server, but keep in mind:

Note: DO NOT copy the “server” folder to protect it from being downloaded by chatters, which is very insecure. The “server” folder should already be securely installed on the web server automatically so far in the installation process.

b) edit client.xml

Please leave the host value to “*” if the chat server and the web server (which hosts the 123flashchat.swf file) are located on the same server.

If the SWF file is on another web server, then you should set the host value according to the chat server domain name or IP address.

The port value in client .xml should be identical with the one in fcserver.xml.

For advanced connection configuration, please refer to:

http://www.123flashchat.com/howto_configure_connection.html

3.4 Insert code

So far 123flashchat.swf is supposed to be already in your web directory. You can insert 123flashchat.swf into your webpage (static or dynamic) and you have two options: The Easy Way or the Advanced Way. In the latter case you can not only insert the flash chat client into the web page but also remove the border of the flash in IE and make the flash client automatically run.



3.4.1 Easy Way

Just insert following code into the desired place of your web page.

```
<DIV id="flashchat">
  <OBJECT classid="clsid:D27CDB6E-AE6D-11cf-96B8-444553540000"
codebase="http://download.macromedia.com/pub/shockwave/cabs/flash/swflash.cab#version=6,0,19,
0" WIDTH="634" HEIGHT="476" id="topcmm_123flashchat">
  <PARAM NAME=movie VALUE="123flashchat.swf">
  <PARAM NAME=quality VALUE="high">
  <PARAM NAME="menu" value="false">
  <EMBED src="123flashchat.swf" quality=high menu=false WIDTH="634" HEIGHT="476"
TYPE="application/x-shockwave-flash"
PLUGINSPAGE="http://www.macromedia.com/go/getflashplayer" scale="noscale"
name="topcmm_123flashchat" swLiveConnect="true"></EMBED>
</OBJECT>
</DIV>
```

Above code is available in the sample webpage which you will get after the installation -> Chat Test.

3.4.2 Advanced Way

We have to bother to insert advanced code only because Microsoft has shipped a new version of its IE browser to permanently change the way multimedia content is rendered on Web pages. Otherwise the Flash chat client will have an ugly border and won't auto-run until the user click to activate it first.

A white paper detailing the ActiveX changes [has been published on the MSDN](#).

Also here: <http://www.adobe.com/devnet/activecontent/articles/devletter.html#otheractivecontent>

The major difference is now you must include 123flashchat.js which contains the "openSWF" method, with this method, 123flashchat.swf URL, width and height can be defined.

//The following code should be inserted between the HTML tag <head> and </head>.

```
<script language="javascript" src="123flashchat.js"></script>
```

//The following code must be inserted between the HTML tag <body> and </body>.

```
<script language="javascript">
openSWF('123flashchat.swf','634','476');
</script>
<noscript>
```



```
<DIV id="flashchat">
<OBJECT classid="clsid:D27CDB6E-AE6D-11cf-96B8-444553540000"
codebase="http://download.macromedia.com/pub/shockwave/cabs/flash/swflash.cab#version
=6,0,19,0" WIDTH="634" HEIGHT="476" id="topcmm_123flashchat">
<PARAM NAME=movie VALUE="123flashchat.swf">
<PARAM NAME=quality VALUE="high">
<PARAM NAME="menu" value="false">
<EMBED src="123flashchat.swf" quality=high menu=false WIDTH="634" HEIGHT="476"
TYPE="application/x-shockwave-flash"
PLUGINPAGE="http://www.macromedia.com/go/getflashplayer" scale="noscale"
name="topcmm_123flashchat" swLiveConnect="true"></EMBED>
</OBJECT>
</DIV>
```

Note: Please remind your users to enable javascript code in their browsers to allow "123flashchat.js" to work. Details:

<https://www.google.com/adsense/support/bin/answer.py?hl=en&answer=12654>

If the webpage, the 123flashchat.js and the 123flashchat.swf are in the same folder, then just paste above code into your webpage would work.

If on the same server but different folder, then "init_root" shall be appended.

Paste above code to your page and replace the "123flashchat.swf" with this:

[../another_directory/123flashchat.swf?init_root=../another_directory/](#)

If the 123flashchat.swf is on another domain, the parameter "init_root" is also indispensable to ensure 123flashchat.swf can find the relevant files to load:

Paste above code to your page and replace the "123flashchat.swf" with

http://www.another_domain.com/chat/123flashchat.swf?init_root=http://www.another_domain.com/chat/

Resize Chat Client

Meanwhile, you can also control the size of the 123 Flash Chat flash client in the HTML code. Find: WIDTH="634" HEIGHT="476", replace the values with the expected width and height. And replace values of the second parameter (WIDTH) and the third parameter (HEIGHT) of the openSWF() method with the expected width and height.

Technically the smallest size is 550*250, and for the width, we recommend it be no less than 400 pixels. You can if you prefer, remove the logo, buttons and other decorations to make it even smaller. For Client Configuration details, please refer to: [4.2 Client Configuration](#)



Append init_xxx arguments to 123flashchat.swf:

There are some parameters could be appended to the "123flashchat.swf", for the details of parameters, please refer to [7.2 Client Parameters](#).

When you use the openSWF method, there are two way to append parameters to the "123flashchat.swf"

1. Append after "123flashchat.swf" directly:

```
openSWF('123flashchat.swf?init_lang=en&init_skin=standard','634','476');
```

A full sample:

```
<script language="javascript" src="123flashchat.js"></script>
<script language="javascript">
openSWF('123flashchat.swf?init_lang=en&init_skin=standard ','634','476');
</script>
<noscript>
<DIV id="flashchat">
<OBJECT classid="clsid:D27CDB6E-AE6D-11cf-96B8-444553540000"
codebase="http://download.macromedia.com/pub/shockwave/cabs/flash/swflash.cab#version=6,0,19,0" WIDTH="634" HEIGHT="476" id="topcmm_123flashchat">
<PARAM NAME=movie VALUE="123flashchat.swf?init_lang=en&init_skin=standard ">
<PARAM NAME=quality VALUE="high">
<PARAM NAME=menu value="false">
<EMBED src="123flashchat.swf?init_lang=en&init_skin=standard " quality=high
menu=false WIDTH="634" HEIGHT="476" TYPE="application/x-shockwave-flash"
PLUGINSPIAGE="http://www.macromedia.com/go/getflashplayer" scale="noscale"
name="topcmm_123flashchat" swLiveConnect="true"></EMBED>
</OBJECT>
</DIV>
```

2. Use the predefined parameter: (recommended)

```
init_lang="en";
init_skin="standard"
openSWF('123flashchat.swf','634','476');
```

A full sample:

```
<script language="javascript" src="123flashchat.js"></script>
<script language="javascript">

init_lang="en";
```



```
init_skin="standard";
openSWF('123flashchat.swf','634','476');
</script>
<noscript>
<DIV id="flashchat">
<OBJECT classid="clsid:D27CDB6E-AE6D-11cf-96B8-444553540000"
codebase="http://download.macromedia.com/pub/shockwave/cabs/flash/swflash.cab
#version=6,0,19,0" WIDTH="634" HEIGHT="476" id="topcmm_123flashchat">
<PARAM NAME=movie VALUE="123flashchat.swf?init_lang=en&init_skin=standard
">
<PARAM NAME=quality VALUE="high">
<PARAM NAME="menu" value="false">
<EMBED src="123flashchat.swf?init_lang=en&init_skin=standard" quality=high
menu=false WIDTH="634" HEIGHT="476" TYPE="application/x-shockwave-flash"
PLUGINSOURCE="http://www.macromedia.com/go/getflashplayer" scale="noscale"
name="topcmm_123flashchat" swLiveConnect="true"></EMBED>
</OBJECT>
</DIV>
```

4. Configuration

4.1 Server Configuration

By default, all configuration for the chat server is controlled by two files:

1. fcserver.xml This is located at:

<123flashchat installed directory>/server/etc/fcserver.xml

2. default.xml It is located at:

<123flashchat installed directory>/server/etc/groups/default.xml

You can also access both files from Windows start menu if you're using Windows system.

4.1.1. fcserver.xml

4.1.1.1 Connection Configuration

Open the configuration file *fcserver.xml*

In the Connection Section, you can set two servers and listen to two ports.

primary-server

secondary-server

There are four reasons as to why there is a second server port option. They are listed below:



- 1) Any version before Flash Player 7 only allows access on a high port (1024-65535) due to security reasons, while a low port is forbidden. If you are okay with high port you will not need to set secondary-server. However if you need to set port lower than 1024, you will need a secondary-server.

- 2) If the port of your primary-server is lower than 1024 like 80, then only users with Flash Player 7 or newer versions will be able to access the chat while users with flash player 6 can't.

In this case a secondary-server will be necessary. The port for the secondary server should be greater than 1024, which will allow users with an earlier version of Flash Player to access chat.

- 3) If you are going to set a high port for your primary-server, then usually you will not need a secondary-server. You will be able to leave the option as default: enable="off".
- 4) Using two servers with two ports is just a temporary solution while some users are still using Flash players earlier than version 7.

When Flash player 7 or higher version becomes mainstream, we will take off the secondary-server for future versions of 123 Flash Chat.

To help understanding, please study two tables below:

Parameter	High port (1024-51127)	Low port (<1024)
>=Flash player 7	✓	✓ Primary server
	✓ secondary server	✗

Table1

Parameter	High port (1024-51127)	Low port (<1024)
>=Flash player 7	✓ Primary server	✓
	✓ (unnecessary)	✗

Table2

To modify the Parameters, please refer to the table below:

Parameter	Type	Default Value	Description
port	Number	51127	The server port must be identical with the port value in client.xml.
ip	String	*	Set the Server address. A default "*" means the chat server will bind to all IP addresses of your server. The host value in client.xml can be a random IP address or any domain name which points to this IP address. Either way, clients will be able to connect to the server. If you set IP address of the server to the specific IP address of your server, then the chat server will only bind to this IP. This will mean that in client.xml, to



			connect the chat server, you can only use this specific IP address or the domain name which points to this IP address.
--	--	--	--

http-server:

To modify the Parameters, please refer to the table below:

Parameter	Type	Default Value	Description
port	Number	35555	The server port must be identical with the port value in client.xml.
ip	String	*	Set the Server address. A default "*" means the chat server will bind to all IP addresses of your server. The host value in client.xml can be a random IP address or any domain name which points to this IP address. Either way, clients will be able to connect to the server. If you set IP address of the server to the specific IP address of your server, then the chat server will only bind to this IP. This will mean that in client.xml, to connect the chat server, you can only use this specific IP address or the domain name which points to this IP address.
enable	String	On	Enable or disable the http server
documentRoot	String	../client	The directory out of which you will serve your documents. By default, all requests are taken from <123flashchat installed directory>/client directory.
maxUploadSize	Number	1024	Setting the max file can be uploaded to the server, if the value less than or equals to 0, this means the server will not accept any upload files.

cross-domain-policy

123 Flash Chat Server start using the cross-domain-policy to ensure security.

```
<cross-domain-policy>  
  <allow-access-from domain="*" />  
</cross-domain-policy>
```

By default it permits access to the connection originating from any domain.

To limit access from a specific domain name, you can configure your server in the following way:

```
<cross-domain-policy>  
  <allow-access-from domain="www.mydomain.com" />  
</cross-domain-policy>
```



To allow all URLs on mydomain.com to be accessible, you can configure your server in the following way:

```
<cross-domain-policy>
  <allow-access-from domain="*.mydomain.com" />
</cross-domain-policy>
```

To allow multiple domain names to be accessible you can configure your server in the following way:

```
<cross-domain-policy>
  <allow-access-from domain="www.myfriendsdomain.com" />
  <allow-access-from domain="*.mydomain.com" />
  <allow-access-from domain="11.22.33.44" />
</cross-domain-policy>
```

max-connections-per-ip

```
<!-- max-connections-per-ip
```

Connection limit of each IP. By default it is "10".

If configure it to "0", then one IP can login unlimited connections, this can be used for performance test. -->

```
<max-connections-per-ip>10</max-connections-per-ip>
```

In current version, the cross-domain-policy is now enhanced in this way:

not only all connections originating from domain which is not in the allow-access list is forbidden, those connections originating from local computer by launching SWF file are now denied, too.

Only connections from allow-access list can access chat.

(Of course you can set it to permit access from any domain.)

4.1.1.2 Global Configuration

Open the configuration file *fcserver.xml*

In the Global Section:

To modify the Parameters, please refer to the tables below:

Parameter	Type	Default Value	Description
message-handle-workers	Number	10	It deals with messages. To handle high frequency messages with over 1000 chat users in one room, please set it to a higher value. Normally you will not need to change it.
listen-workers	Number	5	If the maximum number of users is over 1000, please configure it with larger number. Normally you will not need to change this.
http-listen-workers	Number	5	The value of http-listen-workers determine on the purpose of the http server. If you use the http server to receive the upload files mainly, please set it to a bigger value (about 20~50), if



			you use the http server act as a proxy server, setting the value equals to the listen-workers is enough.
http-message-handle-workers	Number	10	It can deal with messages from the HTTP server. To handle high frequency messages from your HTTP chat server with over 1000 users, please set it to a higher value. Normally you will not need to change it.
max-connection	Number	10000	The user maximum in all rooms will be limited by the license you've purchased.
user-timeout	numbers	300	If a still logged-in user does not send a request to the chat server for a predefined period of time, chat server will stop serve him and the connection will be cut. For example: If a user clicks another URL in their current browser instead of quitting 123 Flash Chat first, their connection will be cut by this setting. But if the 123 Flash Chat user is inactive inside their current browser their connection will still be kept as the flash client will send request to the chat server at intervals to keep the connection alive.
user-idle-timeout	numbers	300	A user will be identified as being in "idle" status when they have not sent a message for a defined period of time. The units of measure are seconds.
user-connection-timeout	numbers	20	A user will get "failed to log in" error message when it exceeds the predefined period of time to try to connect to the chat server.
data-path	String	data	Sets the folder name in which following data files are stored: member folder; ban-ip list; ban-user list, etc.
admin-logs-path	string	logs	Name of the folder of admin log data files.
max-connections-per-ip	Number	10	Connection limit of each IP. By default it is "10". If configure it to "0", then one IP can login unlimited connections, this can be used for performance test.
time-zone	Number	0	Set your local time zone. between -12 to 12. For example, -5: GMT-5 , 8: GMT+8 Default is 0: GMT

4.1.2 Default.xml

4.1.2.1 General Configuration

To modify the Parameters, please refer to the table below:

Parameter	Type	Default Value	Description
-----------	------	---------------	-------------



enable-guest-login	On/Off	On	Allow unregistered guest to log in or not.
Enable-user-register	On/Off	On	Allow new user to register
max-connection	Numbers	10000	User Maximum in all rooms of current group simultaneously.
Max-userid-length	Number	32	Maximum length of user id when registering
max-passwd-length	Number	32	Maximum length of password when registering
max-email-length	Number	128	Maximum length of email address when registering
max-message-length	Number	512	Maximum length of each message.
Max-cached-message-entry	Number	5	Shows the last conversation in a newly opened room and defines how many latest messages will be displayed.
Max-post-row	Number	5	Maxium row of each message.
Integrated-other-database	String	None	<p>123 Flash Chat can integrate your existing user database, like that of your forum or portal system.</p> <p>123 Flash Chat integrates phpBB, PHPNuke, PostNuke, AspNuke, etc.</p> <p>A forum which doesn't have a database can not be integrated.</p> <p>The modes of IntegratedOtherDatabases are:</p> <p>None – not using an integrated database to authorize a user</p> <p>Mysql – using a mysql database</p> <p>Oracle – using an oracle database</p> <p>ODBC – using ODBC DSN to connect a database</p> <p>Common – using all kinds of databases, advanced setting</p> <p>URL – using a web URL to authorize a user's login information.</p> <p>Eg:</p> <p><IntegratedOtherDatabase mode="Mysql"></p> <p>If it is set to "None", when a new user clicks "register", they will be registered in the chat room original register window</p> <p>If set to "Mysql", "Oracle" or "common", then when a new user clicks "register", a new window will pop up and they will be directed to another URL which is pre-set in client.xml.</p>
Auth-url	string	/	<p>You can just leave it blank or even delete this line. It is only necessary when "integrated-other-database" is set to URL.</p> <p>It means the URL you use to authorize your users must have two arguments. One is</p>



			<p>the %username%, the other is the %password%.</p> <p>Eg:</p> <pre><auth-url>http://www.yourhost.com/login_chat.php?username=%username%&password=%password%</auth-url></pre> <p>In this URL, "&" means the character "&" in xml.</p> <p>That is to say, when the user logs into your website by inputting their username "myname" and their password "mypassword", and click "chat" link or button, the chat server will visit "http://www.yourhost.com/login_chat.php?username=myname&password=mypassword" in order to get the login information and will output numbers between 0 to 7, each with a different meaning.</p> <p>0 – login successfully; 1 – wrong password; 2 – the username can't be used; 3 – login error, e.g. error in connecting database; 4 – username does not exist; 5 – successfully login as the administrator; 6 – guest login not allowed; 7 – username banned .</p>
talk-interval	numbers	1000	<p>This is the shortest pause (in milliseconds) between two utterances.</p> <p>This prevents screen flooding. Eg: 1000 = 1 second.</p>
Kick-ban-timeout	numbers	15	<p>Specifies a time period to ban a user's username and IP address after he has been 'kicked out'. Unit: minute</p>



			note: a user will only be banned from the current room but not from other rooms. If you set it to "0", there's no "ban" accompanied with "kick".
Site-key	string		This is the code to validate your website. It must be the same as the siteKey value in client.xml, otherwise the client will not be able to connect to your chat server.
moderatorSe eIP	On/Off	Off	Enable the moderator users have permission to check others IP address.

4.1.2.2 User Configuration

Open the configuration file: *default.xml*

In the user section, you can configure <admin> and <ReservedUserName>.

To add an administrator, just add one line in the Users -> admin Section:

```
<user name="admin" passwd="test" md5="off"/>
```

or:

```
<user name="admin" passwd="098f6bcd4621d373cade4e832627b4f6" md5="on"/>
```

Parameters of admin configuration:

Parameter	Type	Default Value	Description
name	string	username of the administrator	name
passwd	string	Password of the administrator can be encrypted by MD5 or not.	password
md5	string	If the password is not encrypted it needs to be set as: md5="off". If encrypted it needs to be set as: md5="on".	md5

Multiple administrator accounts can be set up, however for security reasons, it is recommended to appoint only one administrator and to designate multiple moderators for different rooms who have less 'power'.

To add a reserved username, just add one row in

<ReservedUserName> tag:



<word>Administrator</word>

4.1.2.3 Log Configuration

There are 3 kinds of logs:

1. access log
2. error log
3. message log.

One log file is generated for one day. The main log always records the current days logs. The history log automatically adds a postfix of the date.

For example: access.log, access.log.2006-5-8, access.log.2006-5-7,

Parameter	Type	Default Value	Description
logs-path	string	logs	Set the directory of data files
access-log	string	access.log	Set the filename of the access log
Error-log	string	error.log	Set the filename of the error log

message logs

Parameter	Type	Default Value	Description
logs-type	string	html	Define the type of log to be html or plain text. 1. text file. sample: *.log 2. html file. sample: *.html
public-message-path	string		Set the directory of public message
public-message-file-name->enable	string	on	Enable or disable to save the public message.
public-message-root-url	string		Set the root url of public message.
public-message-file-name	string	public	Set the filename of the public message log
public-message-button	string	Off	Enable or disable to show the public message button in client side, which will display in the chat history panel.
private-message-path	string		Set the directory of private message
private-message-path->enable	string	on	Enable or disable to save the private message.
private-message-file-name	string	private	Set the filename of the private message log



4.1.2.4 FilterWords Configuration

Inappropriate Words may need to be filtered from a conversation.

If you want to substitute a word, please add one row in the tag below: `<FilterWords>` in

`<123FlashChatServer6.0 installed dir>\server\etc\groups\default.xml`.

Then set the substitute in the following tag:

`<FilterWords replace="your substitute">`

For example:

`<FilterWords replace="***">`

`<filter>fuck</filter>`

`<filter>shit</filter>`

`</FilterWords>`

Parameter	Type	Default Value	Description
filter	string		Bad words needed to be filtered.
replace	string	**	Set the substitute to replace the filtered words.

Partial filter is also enabled, such as: "fuckyou" will be filtered as "***you".

4.1.2.5 robot-message

Scheduled automatic 'robot' message(s) can be defined, to be broadcast in certain room(s) within certain intervals. This can be used for Site News, Advertisement, etc.

[Check details](#)

Parameter	Type	Default Value	Description
enable	On/off	On	Enable or disable chat bot.
activerooms	string	*	Active rooms for all chat bot messages.
interval	number	10	The interval of rotate chat bot messages (seconds)
message	String	/	The robot message content

4.1.2.6 server-api

The 123 Flash Chat server can receive commands sent by third party applications and can send its data to the application or can operate on the chat server accordingly. By default it is set to be "On"- enabled.

[Check details](#)

Parameter	Default Value	Description
auth-password	3874-3459-9293-2194	Only command with the right key(password) will be authorized by the chat server and will be effective.
allow-access-from-ip	127.0.0.1	Only command from this IP is legitimate. If set to “*”, then commands from all IP address are valid. which is insecure.

4.1.2.7 Modules

With following optional modules, the chat can be greatly enhanced.

These are included in the demonstration version for test but are not included in the standard full version by default.

Specific module(s) can be purchased if required.

Module name	Default Value	Introduction
moderated-chat	On	With moderated-chat module enabled, the questions submitted by participants can't go public unless the Moderator or Admin approves/passes it.
change-nick	On	With change-nick module enabled, your users can have the ability to change display nickname after logged in. It makes your chat more flexible and has more fun. "enable": Enable the change nickname function. "enableCustomProfile": Users can have their own profile panel other than a nickname, in the panel they can change their display nickname, location, sex, age and avatar after logging in when the value of enableCustomProfile is on. Otherwise users can change nickname only.
invisible-admin	On	With the invisible-admin module enabled, the administrator can monitor the chat conversations in chat rooms invisibly. Without the “existence” of the administrator, chatters can freely talk but can also be stopped by the administrator if their language is inappropriate..
encrypt-message	off	With encrypt-message module enabled, messages will be encrypted to ensure the security of the chat server. 123flashchat encrypts messages using RSA.
event-chat	On	Certain chat room(s) can be configured to automatically open and close at a particular time. You may broadcast some chat topic on the website before the event, and edit the chat history to be quality web content after the event. Event-chat is an effective way to gather more traffic to chat room.
image-transfer	enableLobby=“On” enablePrivate=“On” uploadURL=“” dow	With the optional Image Transfer Module enabled, users are able to share pictures with each other to add spice and power to the conversation. Only JPG or JPEG formats are allowed.



	nloadURL="" maxU PLoadSize="512" imageHeight="300" imageWidth="400" allowGuest="Off" autoLoadImage="O ff"	
flashcom- audio-video	audio="Off" video="Off" needRequest="On" adminNeedReques t="Off" canShutOffAdmin= "On" moderatorNeedRe quest="Off" canShutOffModerat or="On" maxWindow="5" activeRooms="*" " allowGuest="Off"	With flashcom-audio-video module enabled, and macromedia flash media server installed, your chat can have webcam and voice chat features. Unlike the basic text chat, this module needs support of flash media server.
white-board	enable="Off" userDrawPermissio n="11110" userModifyPermiss ion="11110" width="510" height="400"	With which users can draw on whiteboard while others can watch or join him to draw more.
buddy-list	On	Besides the userlist tab, you will find a buddylist tab. Where the registered users are entitled to add registered users to the buddylist and get buddies' status: online/offline, and can remove buddies and private chat with buddies.

4.1.2.8 Logo Configuration

Sample:

```
<logo href="www.123flashchat.com" src=""></logo>
```

Parameter	Type	Description
href	String	Define your homepage link, then a click on the logo will link the visitors to your homepage in a new browser window. It can be left blank to disable any link.
src	String	It defines the origin of the logo file. To leave it blank means the logo file is located in the default skin folder, you may also fill in an URL which starts with "http://" here to define an external logo picture. Default value: ""



4.1.2.9 <room_id>.xml

In the directory:

<123flashchat installed directory>/server/data/default/rooms/

There are files named "<number>.xml".

For example: 1.xml, 1032.xml

Each one of these files represents a chat room.

The room change in admin panel will affects these xml files accordingly at real-time, ie: when adding a room in the admin panel, one file will be generated into this directory; when deleting one room, one file will be removed from this directory.

For example:

```
<?xml version="1.0" encoding="UTF-8"?>
<room>
  <name>Main Test</name>
  <max>200</max>
  <des>Tip: test register, enter, exit room, send, newline, etc</des>
  <owner>admin</owner>
  <speaker></speaker>
  <password></password>
  <member-only>Off</member-only>
  <pass-all-message>Off</pass-all-message>
  <roomOpen>
    <Time o="special" s="2006-04-18 17:55:00" e="2006-04-18 18:01:00"></Time>
  </roomOpen>
</room>
```

Note: file name is room ID, not room name.

Parameter	Type	Description
name	String	Chat room name
max	Number	Max number of people in one room, which is limited by the user license you have.
des	String	Chat room description and introduction.
owner	String	Chat room owner= moderator who



		<p>can kick any one causing a nuisance.</p> <p>To have two or more moderators, please enter the owner list in this tag separated by “,” with no spaces between.</p> <p>eg: aaa,bbb,ccc.</p> <p>In admin panel, moderators can be added, edited and deleted.</p>
speaker	String	<p>When a room's status is set to 'moderated-chat', all the messages from ordinary users are not made public unless the moderator passes them.</p> <p>Another type of user is “speaker”. A speaker is entitled to talk freely in public without the consent of the moderator.</p> <p>To have more than one speaker, the list of speakers can be entered into the tag, separated by “,” with no spaces between.</p> <p>eg: aaa,bbb,ccc.</p> <p>A speaker can not kick someone from the chat room.</p> <p>Leave the field of speaker to be blank if you want.</p>
password	String	<p>Chat Room password.</p> <p>If you do not want a password to protect a chat room, leave this section blank.</p>
member-only	On/Off	<p>This determines whether a room is 'members only' or open to all including guests.</p>
pass-all-message	On/Off	<p>Enable or disable moderator chat mode(need moderator chat module)</p>
room-open		
room-open -		Define the particular time to open



>time		and close the chat room.
room-open - >time- o	Normal/Special	Room mode, "normal" means certain time period of each day or certain day of a week. "special" means special chat event of a particular day.
room-open - >time- s	number	Example: 2006-04-18 17:55:00 Room start time.
room-open - >time- e	number	Example: 2006-04-18 18:01:00 Room end time.

When you're done with room editing in xml files, save them as ANSI/ASCII format, otherwise the chat server can't recognize them.

4.2 Client Configuration

There are three client configuration files:

1. client.xml,
2. skin.xml,
3. color.xml

The modifications for these files will not be effective until the chat client is re-opened.

4.2.1 client.xml

Only values can be changed, not the names.

Parameter	Type	Default value	Description
Connection->host	String	*	Please leave the host value to "*" if the chat server and the web server (which hosts 123flashchat.swf file) are located on the same server. If the SWF file is on another web server, you should set the host value according to the chat server domain name or ip address. The port value must be identical with the one in fcserver.xml. For details, please refer to: http://www.123flashchat.com/howto_configure_connection.html
Connection->port	Number	51127	
HomeUrl	String	http://www.123flashchat.com	This is the URL you want the logo to link to. If this is set to 'null', there will be no link over the logo.
HelpUrl	String	help/index.html	This is the URL for the help file. This can be translated to any language locally, uploaded to your web server and the new help URL can be inserted here.
registerUrl	String	null	This parameter will not need to be configured if you are using 123 Flash Chat to store your user data.



			This parameter is only required if you are using an external database.
copyright	string	Copyright 2001-2005 TopCMM Computing Inc. All Rights Reserved.	This is your company copyright information. This will be displayed in the "about" panel.
loadRootPath	string	null	This is the directory where the language folder and skin folder are located. These should be left as 'null'. If however you put them on another server, please set them to http://url/ . For example: "http://www.123flashchat.com/chat/" Don't forget the slash at the end.
language	string	*	Choose the interface language from our collection. Current versions of 123 Flash Chat offer the following choices: 1) en - English (default) 2) zh-CN - Simplified Chinese 3) zh-TW - Traditional Chinese 4) nl - Dutch 5) fr - French 6) ja - Japanese 7) es - Spanish 8) de - German 9) it - Italian 10) hu - Hungarian 11) ru - Russian 12) hr - Croatian 13) tr - Turkey 14) ar - Arabic 15) pt - Portugues 16) ko - Korean 17) serbian - Serbian 18) pl - Polish 19) no - Norwegian 20) farsi - Farsi 21) el - Greek 22) iceland - Iceland 23) cs - Czech 24) da - Danish 25) fi - Finnish 26) sv - Swedish 27) pt-br - Brazil Portugues Note: the language files are located in the folder: <loadRootPath>/lang/ The interface can also be translated into other languages which are not included in this list. If this is the case, please save it as language_***.xml. Put it into the same folder and edit language setting in "client.xml". You will then get a local version of 123 Flash Chat.
skin	string	standard	We offer the following skins: 1) standard - Aqua blue skin, scalable



			<p>vector skin.</p> <p>2) beige - Aqua beige skin, scalable vector skin.</p> <p>3) angel - Black metallic bitmap skin.</p> <p>4) hawaii - Aqua black skin, scalable vector skin.</p> <p>5) classic - Blue bitmap skin.</p> <p>6) green - Green skin, scalable vector skin.</p> <p>7) red - Red& black skin, scalable vector skin.</p> <p>8) orange - Orange skin, scalable vector skin.</p> <p>9) clean - Aqua blue & gray skin, scalable vector skin.</p> <p>You can also design a new skin based on the existing skins.</p>
profileUrl	string	null	<p>You can either enable or disable the "profile" option by setting the value to "true" or "false".</p> <p>If it is enabled, enter the correct value after the "url=", eg: http://yourwebsite/profile.php?user=%USER%</p> <p>the "profile" link can be found when activating a user from the user list in the pop up menu.</p> <p>Click on the "profile" link to view the user's details in a new browser window.</p> <p>The URL value can be the profile link in your existing database or even the profile link of another website.</p> <p>Note: you can add multiple profile URLs.</p>
enableRoomSounds	boolean	true	<p>This is the default sound setting in the chat room. This can be enabled by selecting "true" or disabled by selecting "false".</p>
enableMonitorSounds	boolean	true	<p>This is the default sound setting in the monitor panel for the administrator. It can be disabled by selecting "false", however we strongly recommend it to be set to "true" in order to monitor a chat room with sound alerts.</p>
enterRoomSound	boolean	true	<p>This is where you can choose whether or not to play a sound alert when anyone enters the room you are in.</p> <p>The default value for this is "true" which is also the default value for all your members.</p> <p>Your members can set their preferences in their option panel.</p>
messageSound	boolean	true	<p>This is where you can choose whether or not to play a sound alert when receiving a message.</p> <p>The default value for this is "true"</p>



			which is also the default value for all your members. Your members can set their preferences in their option panel.
typingSound	boolean	true	This is where you can choose whether or not to play sound when typing messages. The default value for this is "false" which is also the default value for all your members. Your members can set their preferences in their option panel.
sendingSound	boolean	true	This is where you can choose whether or not to play a sound alert when sending a message. The default value for this is "true" which is also the default value for all your members. Your members can set their preferences in their option panel.
quitRoomSound	boolean	true	This is where you can choose whether or not to play a sound alert when someone exits a room. The default value for this is "true" which is also the default value for all your members. Your members can set their preferences in their option panel.
singleLineMode	boolean	false	This enables switching to a single-line or multi-line mode. Messages can be set next to the speaker by choosing "true". This will save chat space. For example: "Mr.A says: Hello." Messages can be displayed on a new line by choosing "false". For example: "Mr.A says: Hello." "false" will then be the default value for all your members. Your members can set their preferences in their option panel.
parseURI	boolean	true	This is where you can make the URL address in messages clickable or not. If the value is set to "true", then the valid URL, (a string with "http://" or "www.*****" which is 9 characters at least) will become underlined and linked to the specified URL. Default value is "true", which is also default value for all your members. Your members can set their preferences in their option panel.
autoSaveUsername	boolean	true	When the value for this is set to "true" a chatter's username will automatically be saved in the cache. The default value for this is "true" for all of your members. Your members can set their



			preferences in their option panel.
autoSavePassword	boolean	false	When the value for this is set to "true" a member's username will automatically be saved in the cache. The default value for this is "false" for all your members. Your members can set their preferences in their option panel.
autoSaveAvatarFonts	boolean	true	When the value for this is set to "true" a chatter's avatar, font style and color will automatically be saved in the cache. The default value for this is "true" for all your members. Your members can set their preferences in their option panel.
autoSaveBKGround	boolean	true	When the value for this is set to "true" a user's chat space background will automatically be saved in the cache. The default value for this is "true" for all your members.
visibleGuestCheckbox	boolean	true	If this is set to "true", the combination of "guest" and the checkbox before "guest" will be visible to all users.
visiblePasswordInput	boolean	true	If this is set to "true", the password input field will be visible to all users.
visibleLogoutButton	boolean	true	If this is set to "true", the logout button will be visible to all users.
defaultSelectGuest	boolean	false	This can be set to be "true" if the guest is checked as default.
enablePrivateChat	boolean	true	This enables or disables the private chat mode for ordinary users. Remember: the administrator can always activate a 'private chat' with ordinary.
acceptPrivateMessage	boolean	true	The user can accept all private message invitations or deny them by default with this setting.
lockAdminIcon	boolean	true	This is set to "true" if the administrator has a unique reserved icon (a small person with coffee) before their messages. It is not referring to the icon before the administrator in the user list.
messageSpacing	Number	0	You can set the spacing between two messages here.
messageHistorySize	Number	100	To allocate space to record chat history. Please set the default space size here for all your members. unit: kb
showGuestMemberonlyRoom	boolean	true	To define if the member-only room is viewable to guests in a room list.
visibleWelcomeMessage	boolean	true	To define whether or not to display the admin auto-welcome message when anyone enters the chat room.
visibleExitMessage	boolean	true	To define whether or not to display the admin auto message when anyone leaves the chatroom.



visibleRoomList	boolean	true	To display room list or hide it.
siteKey	String		The code to validate your website. You can change this value to anything you want, but keep in mind it must be identical with the site-key value in "fcserver.xml", otherwise connection attempts will be refused by the chat server.
advertisingBanner	boolean	false	To insert one or more advertisement banners onto the chat client. Set enable to "true" to activate this.
banner->src	string		This is where you can make the URL of an advertisement banner source a JPG or swf. The URL could be a relative path or an absolute.
banner->href	string		The URL linked with the advertisement banner.
banner-> duration	Number		Advertisement duration time.
visibleChangeRoomComboBox	boolean	true	This indicates whether the pull-down room menu for users to switch rooms in a chat window is visible or not.
visibleExitRoomButton	boolean	true	Add or remove an exit room button at the top right.
adminAutoGreet	boolean	false	The 'robot' greetings administrator automatically gives to visitors can be displayed one by one. You can add as many lines as you want to make it look like a real person. This feature can be disabled by setting it to "false".
visibleHelpButton	boolean	true	Add or remove the 'Help button' from the top menu.
visibleOptionButton	boolean	true	Add or remove the 'Option button' from the top menu.
visibleAvatarButton	boolean	true	Add or remove the 'Smiley button' from the middle menu above the input area.
visibleBButton	boolean	true	Add or remove the 'B button' from the middle menu above the input area to enable or disable the bold font feature.
visibleIButton	boolean	true	Add or remove the 'I button' from the middle menu above the input area to enable or disable the italic font feature.
visibleUButton	boolean	true	Add or remove the 'U button' from the middle menu above the input area to enable or disable the underline font feature.
visibleColorButton	boolean	true	Add or remove the 'Color picker button' from the middle menu above the input area to enable or disable the font color feature.
visibleSelectSmileyButton	boolean	true	Add or remove the 'smiley button' from the middle menu above the input area to enable or disable the emotion feature.



visibleSelectBgButton	boolean	true	Add or remove the 'BG button' from the middle menu above the input area to enable or disable the change chat background feature.
idleDisconnectTime	number	0	When a user is "idle" in chat room for a predefined time, his connection will be automatically cut and he will be kicked out of the room. This time period can be defined here by admin, "0" means to disable this feature, and the users won't be kicked no matter how long he stays without saying or doing anything. Measurement units: minute.
visibleTimeStamp	boolean	false	Display the timestamp in all users' chat windows. Users can enable or disable this feature by themselves in the option panel.
predefineMessage	boolean	true	Frequently used messages can be easily added to/removed from the predefined section to save time, they can be easily copied into chat by double-click. Content can be defined in "msg value".
openPrivateMsgInWindow	boolean	false	Whether or not to open each private message in a new browser window and the size of it. Admin can preset this option for all users.
flashEmotion	boolean	true	Animated emotions can be chosen and appeared to the chat lobby or private chat. The recipient in private chat, or all users in lobby, can click "play" to enjoy the specific flash. by default it's "true", means the emotion button will be visible to all users. Item: - name: Emotion name - src: flash file location - thumb: thumbnail location - duration: animation duration (seconds).
showSmileLimit->value	number	5	Restrict the max number of smileys in each message. value="0" means no restrict

4.2.2 Skin configuration

123 Flash Chat is skinnable. The skins are stored in the folder: <123FlashChatServer6.0 installed directory>/client/skin



To assign a default skin from the available skin collection to all the users in a chat room, 123 Flash Chat administration has two choices:

1. configuring client.xml, or
2. editing html code

[Check details](#)

4.2.3 Predefined Message

Frequently used messages can be easily added to/removed from the predefined section to save time, they can be easily copied into chat input area by double-click. After editing it or just confirming it, press “send” to publish it.

In client.xml, find: <predefineMessage> section:

Parameter	Type	Default value	Description
enable	boolean	true	Enable predefined message function or not. The canned messages Admin defined in client.xml will be available to all users by default
msg value	string		Default canned message content.

The regular users can define their own messages in chat panel, above chat input area there is a middle toolbar and the last icon is for define and launch canned message.

predefineMessage panel

- add: press “+” to activate add message window.
- Delete: choose one message then press “-” to remove it.
- manage pages: Multiple canned messages can be managed in multiple pages.

4.2.4 Change Private Message Location

Private message has two optional locations: in current SWF or in new browser window. If in current SWF, the loading speed of new private window is much faster; But if in new browser window, it may be easier to manage multiple PMs.

Parameter	Type	Default value	Description
enable	boolean	false	Whether or not to open each private message in a new browser window and the size of it. Default setting defined by admin.
width	number	475	Default width of new browser window, in pixel.
height	number	240	Default height of new browser window, in pixel.

Note: Too many concurrent PMs in new browser windows may lag speed of your computer.



Admin can predefine this option in client.xml to be default setting for all users, and regular users can change setting by themselves in option panel according to their computer performance.

4.2.5 flashEmotion configuration

Animated emotions can be chosen to launch a “play” button into the chat lobby or private chat. Other users can click “play” to enjoy the flash.

Change FlashEmotion

Nine default flashEmotions are packed into the free demo of 123flashchat. You can also add/remove/change current collection. FlashEmotions are stored in one folder named “flashemotion” by default externally from the SWF, and controlled by xml file: client.xml.

To add new FlashEmotion(s), firstly put new flash animations to the FlashEmotion folder, then edit client.xml, find flashEmotion section, add new line(s) to define the location and duration.

Parameter	Type	Default value	Description
enable	boolean	true	flashEmotion button will be visible/invisible to all users by default.
col	number	3	Default column of flashEmotions.
row	number	3	Default row of flashEmotions.
autoPlay	boolean	false	Whether or not the flashEmotion will be auto play in current window.
name	string		flashEmotion name
src	string		The original flash file location. The recommended dimension of flashEmotion: 500×400 px. Better not bigger than 630×470 to look good.
thumb	string		thumbnail location. The recommended dimension of thumbnail: 46×46 px. Other size is okay too, but too big in size will lag the loading speed of the SWF.
duration	number	18	animation duration (seconds) of each flashEmotion, it's depending on the SWF itself.

4.3 Client Admin Panel

Log in the flash client as administrator and click the “admin” button at the top of the menu to enter admin panel. The top buttons have the following functions respectively:

4.3.1 Monitor



In the “monitor” panel, the administrator can monitor every action of all logged in users. For example: connect to server, login, enter room, exit room, change room, logout chat server, etc.

Other information shown here includes: logged in user IP, country and time stamp.

Note: Once a user logs in with a username and password they have a unique user-id, that's the username he used to log in. Despite any nickname they may choose to change to afterwards, their user-id will remain the same and will be displayed in the monitor window until they log out.

4.3.2 SETTINGS

In the “settings” panel, you can change the following variables:

Parameter	Type	Description
Enable user registration	CheckBox	Check to enable user registration
Enable guest login	CheckBox	Check to enable guest login
Save public chat history	CheckBox	Check it to save the message history on the chat server
Save private chat history	CheckBox	Check it to save the message history on the chat server, by default it's not checked.
Timezone	Number	Define timezone for the chat room.

Also in this tray, you can change logo and filter words.

4.3.3 Rooms

In the “room” panel, you can add, delete or edit rooms, controlled by the right botoom buttons.

You will be notified of the result of the action of “add”, “delete” or “edit”.

Rooms you add will appear in real-time in the list of rooms.

In the room details section, an asterisk (*) indicates a required field.

Room name: name of current room.

moderator: he can kick a nuisance person from using the current chat room and set a room to ‘Moderated-chat’. In such a room, all messages from ordinary users will be disabled from being displayed publicly unless the moderator or admin passed them. (“Moderated-chat” is a plug-in module which is not included in the standard full version by default.)

Max users: This value is limited to the license you have purchased.

Password: Leave this blank if you want this to be a public room.

Speaker: Is another user type used in ‘Moderated-chat’. The speaker can freely chat



and their words will be displayed publicly without the consent of the moderator or admin. Leave this as 'null' if you do not need a speaker.

Description: Chat room introduction to attract visitors.

Member only: This defines whether guests can access a particular room.

Turn on moderate-chat mode: Set the default value if this room is a moderated-chat room.

Set room public time: Set the public time of the specific room. Click "add" to add a rule first and click "submit" to save changes.

The room mode:

- "normal": means certain time period of each day or certain day of a week.
- "special": means special chat event of a particular day.
- "EveryHour": means recurring period of each hour.

4.3.4 Ban

In the "Ban Panel" admin can ban users or ban IP.

- Ban or unban a username.

Note: This applies to the user's original username, not their currently displayed nickname. If you ban someone but it fails, please find out their real username in the monitor window and try again.

- Ban or unban an IP address or IP range,

4.3.5 Announcement

In the "Announce Panel" you can broadcast messages to every logged in user, whether in specific chat rooms or just in the room list page.

4.3.6 Admin Account

Here you can manage the multiple admin accounts.

You can also update the administrator password here. Due to security reasons it is very important to change the default admin password after you have set up the chat server for the first time.

The new password will be stored in default.xml as MD5 encrypted.

Tip: If you forget the admin password, you can manually edit admin tag in "default.xml", do not forget to change the admin tag md5="off".

For example: `<user name="admin" passwd="mypassword" md5="Off" />`

Now you can log into chat with the new password: "mypassword".

Then admin panel-> password panel, edit password again.

In this way your final password will be stored in fcserver.xml as a MD5 encrypted string.



4.3.7 Chat bot Message

This feature can be used for site news or text advertisements.

With "Chat Bot", specific message(s) can be broadcast to specific rooms or all rooms at predefined intervals.

Messages can be added, edited and removed from the list.

There can be multiple messages for one room, or one message for all rooms.

4.4 Integrate database configuration

123 Flash Chat supports integrating the existing database of your forum or portal system such as phpBB, PHPNuke, PostNuke, AspNuke, etc., or of other user systems.

Basically 123 Flash Chat can integrate database of any kind, as long as there's username and password in it, but if your website do not support a database your user information will not be able to be integrated. If this is the case you can use 123 Flash Chat to store your user information.

There are a few steps to integrate a database:

1) configure default.xml.

The modes of IntegratedOtherDatabase in default.xml include:

None – does not use an integrated database to authorize users

Mysql - uses a mysql database

Oracle - uses an oracle database

Common - uses all kinds of databases, advanced setting.

URL – uses a web URL to authorize a user's login information.

ODBC – uses an ODBC to connect to any database you want.

2) Configure the database xml file.

It could be:

a) Mysql.xml

Parameter	Type	Description
database-host	string	The hostname of the database server.
database-name	string	The database name you are using.
database-user	string	The user name which is required to connect to the database.
database-password	string	The password which is



		required to connect to the database.
user-table	string	The table to store the user information.
username-field	string	The column of names of the user names in the user-table.
password-field	string	The column of names of passwords in the user-table.
enable-md5	string	<p>It defines whether the password is encrypted with MD5.</p> <p>On - encoded.</p> <p>Off - not encoded.</p> <p>Passwords in many portal systems and forum systems like php-nuke, post-nuke or phpBB, etc. are encrypted with MD5, thus you will need to set this value to 'On'.</p>

b) Oracle.xml

Parameter	Type	Description
mode	string	It could be "thin" or "oci" only. It indicates the way to access the database. The default value is "thin". If you choose "oci", then your server must have installed an oracle client.
database-host	string	The hostname of the database server.
database-port	number	The port of the database.
database-sid	string	The sid of the database server.
service-name	string	The service name to connect to oracle. It doesn't take effect unless you choose the mode "oci".
database-user	string	The user name which is required to connect to the database.
database-password	string	The password which is required to connect to the database.
user-table	string	The table to store the user information.
username-field	string	The column name of user names in the user-table.
password-field	string	The column name of



		passwords in the user-table.
enable-md5	string	<p>It defines whether the password is encrypted with MD5.</p> <p>On - encoded.</p> <p>Off - not encoded .</p> <p>Passwords in many portal systems and forum systems such as php-nuke, post-nuke or phpBB, etc. are encrypted with MD5, thus you will need to set this value to "On".</p>

c) CommonDB.xml

Parameter	Type	Description
jdbc-driver	string	The name of the jdbc driver.
jdbc-url	string	The complete jdbc URL. If the user name and password are required when the database is accessed, they must also be included.
user-table	string	The table to store the user information.
username-field	string	The column name of the user names in the user-table.
password-field	string	The column name of passwords in the user-table.
enable-md5	string	<p>It defines whether the password is encrypted with MD5.</p> <p>On - encoded.</p> <p>Off - not encoded .</p> <p>Passwords in many portal systems and forum systems such as php-nuke, post-nuke or phpBB, etc. are encrypted with MD5, thus you will need to set this value to "On".</p>

d) Using URL to authorize a user's login information.

You can authorize a users' log in information by using a dynamic web application.

You can activate this integration method by following the tag below:

[TopCMM Software
http://www.123flashchat.com](http://www.123flashchat.com)



Once set to "URL", another 2 arguments have to be defined to avoid error.

For example:

http://www.yourhost.com/login_chat.php?username=%username%&password=%password%

Or:

http://www.yourhost.com/login_chat.asp?username=%username%&password=%password%

One argument is the %username%, the other is the %password%.

"&" is the character "&" in xml.

That is to say when the user enters their username: "myname" and their password:

"mypassword", the chat server will visit:

["http://www.yourhost.com/login_chat.php?username=myname&password=mypassword"](http://www.yourhost.com/login_chat.php?username=myname&password=mypassword)

to get the login information which will return a number between 0 to 7, each with a different meaning. See the table below:

Value	Description
0	successfully login as ordinary user;
1	wrong password ;
2	the username can't be used ;
3	login error, e.g. error in connecting database ;
4	username does not exist;
5	successfully login as the administrator;
6	guest login not allowed

e) ODBC.xml

Parameter	Type	Description
dsn-name	string	The DSN name of your ODBC
database-user	string	Enter username if it is required by your ODBC.
database-password	string	Enter password if it is required by your ODBC.
user-table	string	The table to store the user information.
username-field	string	The column name of user names in the user-table.
password-field	string	The column name of passwords in the user-table.
enable-md5	string	It defines whether the password is encrypted with MD5. On - encrypted. Off - not encrypted. Passwords in many portal



		systems and forum systems such as php-nuke, post-nuke or phpBB, etc. are encrypted with MD5, thus you will need to set this value to "On".
--	--	--

5. Chat Modules

The 123 Flash Chat Server releases several powerful chat modules. They can greatly enhance the chat but are not obligatory for every webmaster. Therefore they are not included in the standard package.

Users can choose these optional modules according to their needs.

All modules are just plug-ins based on 123 Flash Chat Server Software which works with the license instead of working alone.

5.1 Moderated chat module

The distinguishing feature of a "Moderated-Chat" (moderation chat or moderate chat) is that questions submitted by participants will not be displayed publicly unless the Moderator or Admin approved/passed it.

Check details here:

<http://www.123flashchat.com/moderated-chat.html>

5.2 Invisible admin chat module

With this module the administrator can monitor chat conversations in chat rooms invisibly. Without the "existence" of the admin participants can freely chat but the administrator can make sure that no one is being inappropriate in the chat room.

Check details here:

<http://www.123flashchat.com/invisible-admin.html>

5.3 Change nickname module

With the "Change-Nickname Module" installed, your users have the ability to change their displayed nickname, location, sex, age after they have logged in. This makes their chatting more flexible and fun.

Parameter	Type	Default	Description
-----------	------	---------	-------------



		value	
enable	On/Off	On	Enable the change nickname function
enableCustomProfile	On/Off	On	Users have the ability to change their displayed nickname, location, sex, age after they have logged in when the value of enableCustomProfile is on. Otherwise users can change their nickname only.

Check details:

<http://www.123flashchat.com/change-nickname.html>

5.4 Pocket-pc & banner chat module

Have you ever thought of attaching a 'mini-chatroom' to your webpage to establish connections between your business and visitors? "Pocket PC or Banner Chat" could be the solution.

It is small and neat and looks like an animation but has full chat features (sending and receiving message in chat lobby, etc.)

It can be attached to any webpage of your site.

A tiny little chat room will encourage visitors to communicate with your representative. This will help them to gain a better understanding of your product or service which will definitely promote sales.

Check details:

<http://www.123flashchat.com/pocket-pc-banner-chat.html>

5.5 Audio-Video module

With audio-video module enabled, you can add webcam and voice chat.

In video-voice chat, 8k/sec bandwidth is used by default. And this bandwidth consumption is adjustable.

Unlike the basic text chat, this webcam chat module need user have a server enable the rtmp protocol, such as Flash Media Server, Flash Communication Server, Red5 or WowzaMediaServer.

If you haven't obtained the flash media server or flash communication server yet, you can buy directly from macromedia: <http://www.macromedia.com>: Flash Media Server. Or you can use the Red5 server (a free Open Source Server) and you can try the WowzaMediaServer, too.

We recommend Flash Media Server to get the best performance.

Video Control

The code to activate video function to 123flashchat, sample:

```
< audio-video audio="On" video="On" needRequest="On" adminNeedRequest="Off"
canShutOffAdmin="On" moderatorNeedRequest="Off" canShutOffModerator="On"
maxWindow="5" activeRooms="*" allowGuest="On"></audio-video>
```

Parameter	Type	Default value	Description
-----------	------	---------------	-------------



activeRooms	number	1	The room list in which the video function is enabled. by default it's "*", means video is ON in all rooms. eg: to enable video in room with ID: 1, 2 and 3, please set "1,2,3", and delimit room IDs using comma ",".
allowGuest	On/Off	On	Whether or not to allow unregistered guest to publish or view video.
audio	On/Off	On	Enable the audio mode
video	On/Off	On	Enable the video mode
needRequest	On/Off	On	When someone is requested video/audio by others, he/she is able to accept or deny the invitation.
adminNeedRequest	On/Off	Off	This function decides whether the admin user need send request with others video/audio
canShutOffAdmin	On/Off	On	This function decides whether the others could cancel the video/adio to the admin users
moderatorNeedRequest	On/Off	Off	This function decides whether the moderator user need send request with others video/audio
canShutOffModerator	On/Off	On	This function decides whether the others could cancel the video/adio to the moderator users

<http://www.123flashchat.com/video-chat.html>

5.6 Encrypt-message chat module

With this optional chat module, chat messages can be encrypted by using RSA, which ensure the privacy and chat security.

<http://www.123flashchat.com/encrypt-message.html>

5.7 Event-chat module

With this optional chat module, chat room can be opened and closed at a particular time to gather more traffic.

The entrance: Admin Panel-> Room Panel-> Set room public time-> Set.

Set the public time of the specific room. Click "add" to add a rule first and click "submit" to save changes.

The room mode:

- "normal": means certain time period of each day or certain day of a week.
- "special": means special chat event of a particular day.
- "EveryHour": means recurring period of each hour.

<http://www.123flashchat.com/event-chat.html>

5.8 Image-transfer module

With this optional chat module, user can send an image in the chat lobby window or in



the private chat window.

The code to activate upload-image function to 123flashchat, sample:

```
<image-transfer enableLobby="On" enablePrivate="On"  
uploadURL="" downloadURL="" maxUPLoadSize="50" imageHeight="200"  
imageWidth="200" allowGuest="On"></image-transfer>
```

Parameter	Type	Default value	Description
enableLobby	String	On	Enable or disable transfer image (support file type: .jpg, .jpeg) in lobby chat window
enablePrivate	String	On	Enable or disable transfer image (support file type: .jpg, .jpeg) in private chat window
uploadURL	String		Setting the URL that the file will be uploaded, you can use your own upload server (apache, tomcat, etc...) or use 123flashchat http server, if you user 123flashchat server, you must leave the uploadURL's value empty
downloadURL	String		Setting the URL that the file will be downloaded, you can use your own upload server (apache, tomcat, etc...) or use 123flashchat http server, if you user 123flashchat server, you must leave the downloadURL's value empty
maxUPLoadSize	Number	1024	Setting the max file can be uploaded to the server, the value must less than the value maxUPLoadSize in <123flashchat installed directory>/server/etc/fcserver.xml, if the value less than or equals to 0, this means the server will not accept any upload files.
imageHeight	Number	200	The height of uploaded image that will be displayed in the lobby or private chat window
imageWidth	Number	200	The width of uploaded image that will be displayed in the lobby or private chat window
allowGuest	String	On	Setting if the guest can upload file
autoLoadImage	String	Off	Enable or disable auto load an image and display it in the window, if disable this function, the user will get an alert message instead of load the image from server directly.

5.9 White-board Module

With this optional chat module, users can use whiteboard function during chat to make drawing and all other users in the same room can see the drawings or join him to draw more.



The whiteboard has the basic functions as other painting tool, it will be opened in a standalone window floating over the chat screen but still in the same SWF.

Admin has the right to enable/disable the drawing and erasing function.

Before purchasing and installing this whiteboard, please purchase Flash Media Server from Macromedia first. Or at least install red5 which may not be very stable when many users use whiteboard at the same time.

The sample code to activate white-board function in 123flashchat:

```
<white-board enable="On" userDrawPermission="11110"  
userModifyPermission="11110" width="510" height="400"></white-board>
```

Parameter	Type	Default value	Description
enable	String	Off	Enable or disable white board function
userDrawPermission	Number	11110	<p>It defines who are entitled to use the drawing function.</p> <p>The value has 5 digits by default, the sequence of the bits from the left to the right represents the admin, moderator, speaker, regular user(registered user) and guests' drawing permission in turn.</p> <p>"1" means ON and "0" means OFF. For example: if you only want admin, moderator , speaker have the drawing permission, then the value will be set to "11110"</p>
userModifyPermission	Number	11110	<p>It defines who can use the eraser. The value has 5 bits in default, the sequence of the bits from the left to the right represent admin, moderator, speaker, regular user(registered user) and guests' permission to erase in turn.</p> <p>"1" means ON and "0" means OFF. For example: if you only want admin, moderator , speaker have the right to erase, then the value will be set to "11100"</p>
width	Number	510	The width of the whiteboard window
height	Number	400	The height of the whiteboard window

5.10 Flash-Media-Server Setting:

When you have the flash com (AV) module or the white board module, you should set the value of "targetURI".

Sample:

```
<flash-media-server targetURI="rtmp://123flashchat"></flash-media-server>
```

Parameter	Type	Default value	Description
targetURI	String	rtmp://123flashchat	The Uniform Resource Identifier (URI) of the application on the Flash



			<p>Communication Server that should run when the connection is made.</p> <p>To specify targetURI, use one of the following formats (items in brackets are optional):</p> <p>rtmp:[port]/appName[/instanceName] (acceptable if the movie and the Flash Communication Server are on the same machine)</p> <p>rtmp://host[:port]/appName[/instanceName]</p> <p>For example, the following URIs are formatted correctly: rtmp://www.yourwebsite.com/123flashchat rtmp:/123flashchat_default</p> <p>Notice: If you use the targetURI for white board module, you should make a new file named "main.asc" containing following code "load("components.asc");" and copy this file to the <Flash Media/Communication Server installed directory>/applications/Application Directory (appName)/</p>
--	--	--	--

5.11 Buddy-List Module

With this optional chat module, users can use the buddylist function to add a buddy to the buddylist or delete a buddy from the buddylist, user can chat with the buddies whose are online at any time.

The sample code to activate white-board function in 123flashchat:

`<buddy-list enable="On"></buddy-list>`

Parameter	Type	Default value	Description
enable	String	Off	Enable or disable the buddy list function

6. How to customize chat skin

Brief introduction:

All sets of skins are stored under the directory:

`<123flashchat installed directory>/client/skin/`.

By default we offer 9 sets of skins. You can modify any skin or add



your own based on the pre-existing skins.

Skin components are controlled by skin.xml.

Color style can be adjusted by color.xml.

Only SWF or JPG image file can be used to construct a skin.

GIF or PNG files will not work.

If you like the opaque background, you can save it as a jpg file (non progressive mode). If you would prefer a transparent background, please save it as a png or gif file and import it to flash to convert it to a swf file without the background.

Client FLA files are not necessary to design a skin.

Below are some tutorials which might be helpful for designers:

a) HowTo customize skin? <http://www.123flashchat.com/howtoskin.html>

b) HowTo change skin color? <http://www.123flashchat.com/colormap.html>

c) HowTo customize background?

http://www.123flashchat.com/howto_change_bkground.html

Change background

Every skin offers background pictures in the chat area.

You can also create your own jpg or swf backgrounds and put them into the skin folder.

New backgrounds should be in the dimensions within the basic background. The graphics for the new background will be added above the basic background. (We suggest you double click the background alternative in the download pack to get a better picture of how it should look like.)

To offer more backgrounds for users to select, please edit skin.xml,

Find the following section:

```
<SKIN_BKGROUND>
```

```
<BKGROUND name="Standard" value="bkground.swf" />
```

```
</SKIN_BKGROUND>
```

Then add a new line in this format. "name" is for users to pick from. "value" is the filename of the background that you have created.

7. Programmer's tools

Server APIs are provided for 123 Flash Chat Server Software developers. This will enable the developers to obtain detailed chat server information. Client APIs are also provided to customize the chat client.



7.1 Server API

7.1.1 Get Server Running Status from the files

When a chat server is running, some parameters are stored in text files which can be read by your application. Useful information can be extracted from them.

This feature is included in the standard version of 123 Flash Chat.

7.1.1.1 Get numbers

To obtain a current connection number, the logon user number and the room number from a record file, use the following format:

<123FC installed directory>/server/data/default/online.txt

This file will real-time change according to the chat room status.

Format:

< connection number >|<logon user number>|<room numbers>

Sample: 230|180|10

The example above shows that there are 230 connections on the chat server, 180 of them have logged in and there are 10 chat rooms altogether.

This data can be read and displayed in php, asp or other dynamic webpages.

7.1.1.2 Get username list of each room

You can display the user name list of each room on your webpage by retrieving data from "room_*.txt".

In the <123 installed directory>/server/data/default/, you can find the following files:

"room_1.txt", "room_2.txt", etc.

These files store the online user lists of relevant rooms. These will keep changing depending on the changes of specific rooms.

7.1.2 Send command to server to operate or get real-time data

This feature can be very handy for an advanced user.

With it you can develop an application to connect to the chat server via a socket. Then a TCP string command can be sent to operate or obtain the real-time data.

In "<123flashchat installed directory>/server/etc/groups/default.xml" file you will find:

<server-api enable="On">



```
<!-- auth-password
```

Only commands made using the right key (password) will be authorized by the chat server and will be effective.

```
-->
```

```
<auth-password>3874-3459-9293-2194</auth-password>
```

```
<!-- allow-access-from-ip
```

Only commands from this IP address are legitimate.

If it is set to "*", then commands from all IP address will be valid. This will not be secure.

```
-->
```

```
<allow-access-from-ip>127.0.0.1</allow-access-from-ip>
```

```
</server-api>
```

The socket message string being sent is in standard syntax which will appear as shown below:

```
<?xml version="1.0" encoding="UTF-8"?><Command group="default"
api_pwd="api_pwd_in_default.xml_file" type="command_type" "command_parameters...." />
```

Note: Remember to terminate XML-commands with a null-byte.

group: in the standard version, the group value has to be "default"

api_pwd: this has to be the "auth-password" value which is defined in "default.xml".

type: this is the type of the command being sent. It could be in the following types:

"add_room", "del_room", "broadcast" "private_message".

command_parameters: these are parameters needed for every command. They can be different for each command. These will be introduced later.

Below is an example of a command string

```
<?xml version="1.0" encoding="UTF-8"?><Command group="default" api_pwd="3874-3459-
9293-2194" type="add_room" name="the_room_name" owner="abcd" desc="test" max="200"
/>
```

7.1.2.1 add_room

Rooms can be added on the fly using the 'add room' command.

The following parameters are indispensable:

Parameter	Type	Description
name	String	Expected room name
owner	String	New room moderator
desc	String	New room description
max	Number	max number of people the new room can hold
speaker	String	New room speaker
member	String	Enable or disable guest to enter room
pwd	String	New room password



passallmessage	True/false	Enable or disable the moderator chat mode.(need moderator chat module)
roomOpen	Element	(Only supported when user have event chat module)
roomOpen->Time	Element	
Time->o	String	Option: day1~day31 special
Time->e	String	End time
Time->s	String	Start time

A full sample of this command is shown below:

```
<?xml version="1.0" encoding="UTF-8"?><Command group="default" api_pwd="3874-3459-9293-2194" type="add_room" name="test room" owner="aaa" desc="room for test" max="200" speaker="bbb" member="false" pwd="" passallmessage="true" >
  <roomOpen>
    <Time o="day2" e="10:00:00" s="00:00:00"></Time>
  </roomOpen>
</Command>
```

For advanced details, please check webpage:

<http://www.123flashchat.com/addroom-serverapi.html>

7.1.2.2 del_room

Rooms can be deleted dynamically using this command.

Parameter	Type	Description
room_id	Number	The ID of rooms needed to be removed.

A full sample of this command can be seen below:

```
<?xml version="1.0" encoding="UTF-8"?><Command group="default" api_pwd="3874-3459-9293-2194" type="del_room" room_id="1" />
```

7.1.2.3 edit_room

Rooms can be edited dynamically using this command.

The following parameters are indispensable:

Parameter	Type	Description
roomid	String	The ID of rooms needed to be edited
name	String	Expected room name
owner	String	New room moderator
desc	String	New room description



max	Number	max number of people the new room can hold
speaker	String	New room speaker
member	String	Enable or disable guest to enter room
pwd	String	New room password
passallmessage	True/false	Enable or disable the moderator chat mode.(need moderator chat module)
roomOpen	Element	(Only supported when user have event chat module)
roomOpen->Time	Element	
Time->o	String	Option: day1~day31 special
Time->e	String	End time
Time->s	String	Start time

7.1.2.4 broadcast

This command will broadcast messages to every logon user, whether or not they have entered their username or entered a room.

The following parameters are indispensable:

Parameter	Type	Description
userid	String	What name should be used to broadcast.
Msg	String	Broadcast message.

7.1.3 private_message

This allows a private message to be sent to a specific user.

Parameter	Type	Description
dest_uid	String	The receiver's userid
msg	String	Message to be sent
avatar	String	Avatar name in the message(could be "e1" , "e2" ... "e32")
owner_uid	String	The sender's userid
owner_nick	String	The sender's nickname
b	"1" or "0"	1 – bold font for the message being sent 0 – not bold
i	"1" or "0"	1 – italic font 0 – not italic
u	"1" or "0"	1 – underlined font 0 – no underline
color	Hexadecimal Number	Color value must begin with "0x", eg: red is "0xFF0000"

A full sample of this command can be seen below:

```
<?xml version="1.0" encoding="UTF-8"?><Command group="default" api_pwd="3874-3459-9293-2194" type="private_message" dest_uid="test" msg="hello world" emotion="e2"
```



```
owner_uid="admin" owner_nick="admin" b="1" i="1" u="1" color="0xff00ff" />
```

How to use above server APIs with php to send command to chat server, here is the sample code:

```
<?
```

```
$host = "127.0.0.1";
```

```
$port = 51127;
```

```
$apiCommand = '<?xml version="1.0" encoding="UTF-8"?><Command group="default"
```

```
api_pwd="3874-3459-9293-2194" type="add_room" name="Chit Chat" owner="Mod"
```

```
desc="Chit Chat room." max="200" />';
```

```
$fp = fsockopen($host, $port, &$errno, &$errstr, 2);
```

```
if(!$fp)
```

```
{
```

```
echo "$errstr ($errno)\n";
```

```
}
```

```
else
```

```
{
```

```
fputs($fp,$apiCommand."\n");
```

```
fclose($fp);
```

```
}
```

```
?>
```

7.2 Client Parameters

The "123flashchat.swf" can fulfill special tasks (like auto-login) by appending the parameters after it when inserting it into html code.

Specific code can be generated by the dynamic web application to allow logged-in users to access your system. They will automatically be able to log in to any chat room without re-entering their name and password, etc.

7.2.1 init_user and init_password

With these two parameters your users do not have to re-enter their names and passwords to access the chat room list page as their usernames and passwords are already attached. The 'login' button has already been activated.

This provides an effective method for auto-login.

You should be able to encrypt your user's passwords with MD5 to make them secure.

For example:

If the user name = my username, password = my password, the code you should add into your html will be as follows:

```
<script language="javascript">
```



```
init_user="myusername";

init_password="mypassword";

openSWF('123flashchat.swf','634','476');
</script>
<noscript>

<DIV id="flashchat">
<OBJECT classid="clsid:D27CDB6E-AE6D-11cf-96B8-444553540000"
codebase="http://download.macromedia.com/pub/shockwave/cabs/flash/swflash.cab#version
=6,0,19,0" WIDTH="634" HEIGHT="476" id="topcmm_123flashchat">
<PARAM NAME=movie
VALUE="123flashchat.swf?init_user=myusername&init_password=mypassword">
<PARAM NAME=quality VALUE="high">
<PARAM NAME="menu" value="false">
<EMBED src="123flashchat.swf? init_user=myusername&init_password=mypassword"
quality=high menu=false WIDTH="634" HEIGHT="476" TYPE="application/x-shockwave-
flash" PLUGINSOURCE="http://www.macromedia.com/go/getflashplayer" scale="noscale"
name="topcmm_123flashchat" swLiveConnect="true"></EMBED>
</OBJECT>
</DIV>
```

Note: The auto-login will not happen until both of the parameters are attached at the same time.

If a user logs in as a guest, you can leave the init_password blank. This is shown in the following example:

```
<script language="javascript">
init_user="myusername";

init_password="";

openSWF('123flashchat.swf','634','476');
</script>
<noscript>

<DIV id="flashchat">
<OBJECT classid="clsid:D27CDB6E-AE6D-11cf-96B8-444553540000"
codebase="http://download.macromedia.com/pub/shockwave/cabs/flash/swflash.cab#version
=6,0,19,0" WIDTH="634" HEIGHT="476" id="topcmm_123flashchat">
<PARAM NAME=movie VALUE="123flashchat.swf?init_user=myusername&init_password=">
<PARAM NAME=quality VALUE="high">
```



```
<PARAM NAME="menu" value="false">
<EMBED src="123flashchat.swf? init_user=myusername&init_password=" quality=high
menu=false WIDTH="634" HEIGHT="476" TYPE="application/x-shockwave-flash"
PLUGINSPAGE="http://www.macromedia.com/go/getflashplayer" scale="noscale"
name="topcmm_123flashchat" swLiveConnect="true"></EMBED>
</OBJECT>
</DIV>
```

7.2.2 init_nickname

This parameter gives logged on users a display nickname automatically.

It will only be valid if you set it in the server configuration as follows:

```
<enable-change-nickname>On</enable-change-nickname>
```

It can be used in conjunction with init_user and init_password, so that a user can have their own nickname once they are automatically logged in.

```
<script language="javascript">
init_user="myusername";

init_password="mypassword";

init_nickname="mynickname";

openSWF('123flashchat.swf','634','476');
</script>
<noscript>

<DIV id="flashchat">
<OBJECT classid="clsid:D27CDB6E-AE6D-11cf-96B8-444553540000"
codebase="http://download.macromedia.com/pub/shockwave/cabs/flash/swflash.cab#version
=6,0,19,0" WIDTH="634" HEIGHT="476" id="topcmm_123flashchat">
<PARAM NAME=movie
VALUE="123flashchat.swf?init_user=myusername&init_password=mypassword&init_nickna
me=mynickname">
<PARAM NAME=quality VALUE="high">
<PARAM NAME="menu" value="false">
<EMBED src="123flashchat.swf?
init_user=myusername&init_password=mypassword&init_nickname=mynickname"
quality=high menu=false WIDTH="634" HEIGHT="476" TYPE="application/x-shockwave-
flash" PLUGINSPAGE="http://www.macromedia.com/go/getflashplayer" scale="noscale"
name="topcmm_123flashchat" swLiveConnect="true"></EMBED>
```



```
</OBJECT>  
</DIV>
```

7.2.3 init_root

The init_root is the string of an URL or a directory.

It is only useful when the chat html file and the 123flashchat.swf are located in different directories.

With init_root, the swf can automatically load client.xml, lang folder and skin folder under the specified root directory:

```
<script language="javascript">  
init_root=" http://www.yourhostname.com/yourdir/ "  
  
openSWF('123flashchat.swf','634','476');  
</script>  
<noscript>  
  
<DIV id="flashchat">  
<OBJECT classid="clsid:D27CDB6E-AE6D-11cf-96B8-444553540000"  
codebase="http://download.macromedia.com/pub/shockwave/cabs/flash/swflash.cab#version  
=6,0,19,0" WIDTH="634" HEIGHT="476" id="topcmm_123flashchat">  
<PARAM NAME=movie VALUE="123flashchat.swf?init_root=  
http://www.yourhostname.com/yourdir/">  
<PARAM NAME=quality VALUE="high">  
<PARAM NAME="menu" value="false">  
<EMBED src="123flashchat.swf?init_root= http://www.yourhostname.com/yourdir/"  
quality=high menu=false WIDTH="634" HEIGHT="476" TYPE="application/x-shockwave-  
flash" PLUGINSOURCE="http://www.macromedia.com/go/getflashplayer" scale="noscale"  
name="topcmm_123flashchat" swLiveConnect="true"></EMBED>  
</OBJECT>  
</DIV>
```

Note: please add a slash at the end of this value,
It should look like the following:

<http://www.yourhostname.com/yourdir/>

It should **NOT** look like the example below:

<http://www.yourhostname.com/yourdir>



7.2.4 init_room and init_room_pwd

Your users can skip the room list page and automatically log directly into a specific chat room. Parameter "init_room" can help you with auto-login-room.

Parameter	value	type	Description
init_room	Room_id	number	is room ID (init_room=) instead of room name.
init_room_pwd	Room password	string	If the room is password protected, you need to set init_room_pwd (init_room_pwd=) Of course init_room_pwd is not obligatory.

For example:

If the user name = myusername, password = mypassword, room id=1001, the code you should add into your html will be as follows:

```
<script language="javascript">
init_user="myusername";

init_password="mypassword";

init_room="1001";

openSWF('123flashchat.swf','634','476');
</script>
<noscript>

<DIV id="flashchat">
<OBJECT classid="clsid:D27CDB6E-AE6D-11cf-96B8-444553540000"
codebase="http://download.macromedia.com/pub/shockwave/cabs/flash/swflash.cab#version
=6,0,19,0" WIDTH="634" HEIGHT="476" id="topcmm_123flashchat">
<PARAM NAME=movie
VALUE="123flashchat.swf?init_user=myusername&init_password=mypassword&init_room=1
001">
<PARAM NAME=quality VALUE="high">
<PARAM NAME="menu" value="false">
<EMBED src="123flashchat.swf?
init_user=myusername&init_password=mypassword&init_room=1001" quality=high
menu=false WIDTH="634" HEIGHT="476" TYPE="application/x-shockwave-flash"
PLUGINSPage="http://www.macromedia.com/go/getflashplayer" scale="noscale"
name="topcmm_123flashchat" swLiveConnect="true"></EMBED>
```



```
</OBJECT>  
</DIV>
```

To be effective, this parameter must be used in conjunction with the other two parameters: init_user and init_password.

7.2.5 init_lang

This parameter helps the chat client to load a defined language file.

init_lang in html code will disable the language value in the client.xml because init_lang has a higher priority.

In this way, your dynamic web application can choose to show the local language for specific users in any country.

For example:

```
<script language="javascript">  
init_lang="en";  
  
openSWF('123flashchat.swf','634','476');  
</script>  
<noscript>  
  
<DIV id="flashchat">  
<OBJECT classid="clsid:D27CDB6E-AE6D-11cf-96B8-444553540000"  
codebase="http://download.macromedia.com/pub/shockwave/cabs/flash/swflash.cab#version  
=6,0,19,0" WIDTH="634" HEIGHT="476" id="topcmm_123flashchat">  
<PARAM NAME=movie VALUE="123flashchat.swf?init_lang=en">  
<PARAM NAME=quality VALUE="high">  
<PARAM NAME="menu" value="false">  
<EMBED src="123flashchat.swf? init_lang=en" quality=high menu=false WIDTH="634"  
HEIGHT="476" TYPE="application/x-shockwave-flash"  
PLUGINSPAGE="http://www.macromedia.com/go/getflashplayer" scale="noscale"  
name="topcmm_123flashchat" swLiveConnect="true"></EMBED>  
</OBJECT>  
</DIV>
```

123flashchat.swf will then automatically load the language package: lang/language_en.xml

7.2.6 init_skin

This parameter helps the flash client to load a specified skin.



Init_skin in html code will disable the skin value in the client.xml because init_skin has a higher priority.

In this way, your dynamic web application can 'listen' to each user's favorite skin.

For example:

```
<script language="javascript">
init_skin="default";

openSWF('123flashchat.swf','634','476');
</script>
<noscript>

<DIV id="flashchat">
<OBJECT classid="clsid:D27CDB6E-AE6D-11cf-96B8-444553540000"
codebase="http://download.macromedia.com/pub/shockwave/cabs/flash/swflash.cab#version
=6,0,19,0" WIDTH="634" HEIGHT="476" id="topcmm_123flashchat">
<PARAM NAME=movie VALUE="123flashchat.swf?init_skin=default">
<PARAM NAME=quality VALUE="high">
<PARAM NAME="menu" value="false">
<EMBED src="123flashchat.swf? init_skin=default" quality=high menu=false WIDTH="634"
HEIGHT="476" TYPE="application/x-shockwave-flash"
PLUGINSPAGE="http://www.macromedia.com/go/getflashplayer" scale="noscale"
name="topcmm_123flashchat" swLiveConnect="true"></EMBED>
</OBJECT>
</DIV>
```

123flashchat.swf would then automatically load the skin under directory " skin/classic".

7.2.7 admin_mode

With this parameter, functions which are disabled in client.xml for ordinary users will be activated for the administrator.

This will usually only need to be used in special circumstances.

By default it is 'false'.

For example: in client.xml, if you configure it to:

```
<visiblePasswordInput value="false" />
```

then you block yourself from entering a password to enter the admin panel.

If this is the case, with admin_mode = true, you can resolve this problem.

You can create a special html file or dynamic webpage with this parameter to give the admin a control panel. For example:



```
<script language="javascript">
admin_mode="true";

openSWF('123flashchat.swf','634','476');
</script>
<noscript>

<DIV id="flashchat">
<OBJECT classid="clsid:D27CDB6E-AE6D-11cf-96B8-444553540000"
codebase="http://download.macromedia.com/pub/shockwave/cabs/flash/swflash.cab#version
=6,0,19,0" WIDTH="634" HEIGHT="476" id="topcmm_123flashchat">
<PARAM NAME=movie VALUE="123flashchat.swf?admin_mode=true">
<PARAM NAME=quality VALUE="high">
<PARAM NAME="menu" value="false">
<EMBED src="123flashchat.swf? admin_mode=true" quality=high menu=false WIDTH="634"
HEIGHT="476" TYPE="application/x-shockwave-flash"
PLUGINSPAGE="http://www.macromedia.com/go/getflashplayer" scale="noscale"
name="topcmm_123flashchat" swLiveConnect="true"></EMBED>
</OBJECT>
</DIV>
```

7.2.8 init_ad

This will enable or disable the 'advertisement banner' function.

init_ad=true/false

This parameter has a higher priority over the value of advertisingBanner in client.xml.

For example, if in the html code you set:

```
<script language="javascript">
init_ad="true";

openSWF('123flashchat.swf','634','476');
</script>
<noscript>

<DIV id="flashchat">
<OBJECT classid="clsid:D27CDB6E-AE6D-11cf-96B8-444553540000"
codebase="http://download.macromedia.com/pub/shockwave/cabs/flash/swflash.cab#version
=6,0,19,0" WIDTH="634" HEIGHT="476" id="topcmm_123flashchat">
<PARAM NAME=movie VALUE="123flashchat.swf? init_ad =true">
<PARAM NAME=quality VALUE="high">
<PARAM NAME="menu" value="false">
```



```
<EMBED src="123flashchat.swf? init_ad =true" quality=high menu=false WIDTH="634"  
HEIGHT="476" TYPE="application/x-shockwave-flash"  
PLUGINSPAGE="http://www.macromedia.com/go/getflashplayer" scale="noscale"  
name="topcmm_123flashchat" swLiveConnect="true"></EMBED>  
</OBJECT>  
</DIV>
```

but in client.xml you set `<advertisingBanner enable="false">`.
Then the advertisement banner will still be 'enabled'.

7.2.9 loading_bkground

This defines whether the loading background (which is now a blue cup) appears or does not appear. The default value is set to 'true'. Usually you will not need to use this interface.

If you need a loading number without a background image, you can set the loading background value to 'false'.

For example:

```
<script language="javascript">  
loading_bkground=false;  
  
openSWF('123flashchat.swf','634','476');  
</script>  
<noscript>  
  
<DIV id="flashchat">  
<OBJECT classid="clsid:D27CDB6E-AE6D-11cf-96B8-444553540000"  
codebase="http://download.macromedia.com/pub/shockwave/cabs/flash/swflash.cab#version  
=6,0,19,0" WIDTH="634" HEIGHT="476" id="topcmm_123flashchat">  
<PARAM NAME=movie VALUE="123flashchat.swf? loading_bkground =false">  
<PARAM NAME=quality VALUE="high">  
<PARAM NAME="menu" value="false">  
<EMBED src="123flashchat.swf? loading_bkground =false" quality=high menu=false  
WIDTH="634" HEIGHT="476" TYPE="application/x-shockwave-flash"  
PLUGINSPAGE="http://www.macromedia.com/go/getflashplayer" scale="noscale"  
name="topcmm_123flashchat" swLiveConnect="true"></EMBED>  
</OBJECT>  
</DIV>
```



7.2.10 init_private and init_private_message

A private window can be automatically created in 123 Flash Chat with some words to start the conversation. This makes it perfect as a one-to-one live support software.

Parameters "init_private" and "init_private_message" can help you with "auto create private window".

Parameter	value	type	Description
init_private	Receiver name	string	The receiver name in the destination room.
init_private_message	greeting	string	Words you would like to start with.

For example:

If the user name = "abc"; password = "abc"; room id = "1"; the name of the person you want to talk to is "test"; and you want to create a private window by saying "hello", then the script to add into your html code is as follows:

```
<script language="javascript">  
init_user="myusername";  
  
init_password="mypassword";  
  
init_room="1001";  
  
init_private="destusername";  
  
init_private_message="message";  
  
openSWF('123flashchat.swf','634','476');  
</script>  
<noscript>  
  
<DIV id="flashchat">  
<OBJECT classid="clsid:D27CDB6E-AE6D-11cf-96B8-444553540000"  
codebase="http://download.macromedia.com/pub/shockwave/cabs/flash/swflash.cab#version  
=6,0,19,0" WIDTH="634" HEIGHT="476" id="topcmm_123flashchat">  
<PARAM NAME=movie  
VALUE="123flashchat.swf?init_user=myusername&init_password=mypassword&init_room=1  
001&init_private=destusername&init_private_message=message">  
<PARAM NAME=quality VALUE="high">  
<PARAM NAME="menu" value="false">
```



```
<EMBED src="123flashchat.swf?
init_user=myusername&init_password=mypassword&init_room=1001&init_private=destusern
ame&init_private_message=message" quality=high menu=false WIDTH="634"
HEIGHT="476" TYPE="application/x-shockwave-flash"
PLUGINSOURCE="http://www.macromedia.com/go/getflashplayer" scale="noscale"
name="topcmm_123flashchat" swLiveConnect="true"></EMBED>
</OBJECT>
</DIV>
```

The code above will enable you to automatically log in to the chat using this account:
username: myusername, password: mypassword. And enter the room with id "1001". If
someone named "destusername" already exists in that room, a private window will be
automatically created and the message: "message" will be sent out. Of course you can
remove the "init_private_message" section to cancel sending messages when creating
private windows.

7.2.11 Init_listroom

"init_listroom" API can be added using html code by admin to ensure that only specific rooms
can be visible in the room list. Devide rooms using ",".

For example:

```
<script language="javascript">
init_listroom="1,3,5";

openSWF('123flashchat.swf','634','476');
</script>
<noscript>

<DIV id="flashchat">
<OBJECT classid="clsid:D27CDB6E-AE6D-11cf-96B8-444553540000"
codebase="http://download.macromedia.com/pub/shockwave/cabs/flash/swflash.cab#version
=6,0,19,0" WIDTH="634" HEIGHT="476" id="topcmm_123flashchat">
<PARAM NAME=movie VALUE="123flashchat.swf?init_listroom=1,3,5">
<PARAM NAME=quality VALUE="high">
<PARAM NAME="menu" value="false">
<EMBED src="123flashchat.swf?init_listroom=1,3,5" quality=high menu=false WIDTH="634"
HEIGHT="476" TYPE="application/x-shockwave-flash"
PLUGINSOURCE="http://www.macromedia.com/go/getflashplayer" scale="noscale"
name="topcmm_123flashchat" swLiveConnect="true"></EMBED>
```



```
</OBJECT>  
</DIV>
```

7.2.12 init_invisible

“init_invisible” API can be added using html code by admin to set default value of admin’s visible. If this value is “true”, admin will be set invisible as default when login.

```
<script language="javascript">  
init_user="admin";  
  
init_password="admin";  
  
init_invisible="true";  
  
openSWF('123flashchat.swf','634','476');  
</script>  
<noscript>  
  
<DIV id="flashchat">  
<OBJECT classid="clsid:D27CDB6E-AE6D-11cf-96B8-444553540000"  
codebase="http://download.macromedia.com/pub/shockwave/cabs/flash/swflash.cab#version  
=6,0,19,0" WIDTH="634" HEIGHT="476" id="topcmm_123flashchat">  
<PARAM NAME=movie  
VALUE="123flashchat.swf?init_user=myusername&init_password=mypassword&init_invisible  
=true">  
<PARAM NAME=quality VALUE="high">  
<PARAM NAME="menu" value="false">  
<EMBED src="123flashchat.swf?  
init_user=myusername&init_password=mypassword&init_invisible=true" quality=high  
menu=false WIDTH="634" HEIGHT="476" TYPE="application/x-shockwave-flash"  
PLUGINSOURCE="http://www.macromedia.com/go/getflashplayer" scale="noscale"  
name="topcmm_123flashchat" swLiveConnect="true"></EMBED>  
</OBJECT>  
</DIV>
```



8. Lite Client

Lite version in v6.1 is another option for flash chat client, it is very small in file size (only about 30 kb) and has the basic chat functions, including chat logo, user list, chat input area and chatbox to display chat content. The benefit of the lite version is that the loading speed can be faster than the standard flash chat client because the decoration graphics are removed. Meanwhile, the lite version can handle higher load, there can be about 1000 people chat at the same time in the same room.

By default, the lite client will enter the first room of the chat and the user id will be generated automatically by the server. Or, you can use the init parameters to login and enter a room automatically. The parameters are: init_user, init_password, init_nickname, init_room, init_room_pwd. For the instructions, please refer to the chapter of [7.2 Client Parameters](#)

Sample code:

[~lite.swf?init_user=a&init_password=a&init_room=1001](#),

it indicates that you will use the username "a" and password "a" to enter the room which id is "1001".

Lite client command list:

The send-smiley function is available in Lite Client although the Smiley Panel is removed and the smileys can be mixed with text in the same line. Smileys can be embedded into conversation via shortcut symbols, like ":"). Tip: To check out the list of the available smileys, type command: "/help" or "/h". The list is also illustrated in the help document of the chat client: [/help/smiley-shortcut.htm](#)

If the chat owner wants to disable smiley function in lite client, use parameter init_load_smiley in html code:

sample: [lite.swf?init_load_smiley=false](#)

9. User Profile Interface

You can customize user's profile via user profile interface. For example, it can help you show user's profile which is customized in database in flashchat on condition that all users' profile have been stored in the database of your website.

In order to use this function, you must use the web URL to authorize user's login information, you can add any user's profile information next to the "login result" 0(login success) or 5 (login success admin), and split the login result and user's profile parameter by "|".



When users login, there is an attribute 'c' with the login user's profile information carried at the head of login element from server to client. When users enter room or change room, there is an attribute 'c' with another user's profile information carried at the head of u element from server to client.

Example:

login_chat.php

<?

```
$username=$_GET['username'];

$password=$_GET['password'];

if($username=="owen"&&$password=="owen")

{

    echo '5|gender=m&age1=23&avaURL=http://www.123flashchat.com/a.jpg';

}

else

{

    echo '0|gender=m&age1=28&avaURL=http://1www.123flashchat.com/b.jpg';

}
```

?>

When user(owen) login: (returned xml from server to client)

```
<Login cn="1" ln="1" cto="20" kat="300" ito="300" eur="1" egl="1" smh="1" espumh="1"
esprmh="1" rmm="1" eec="1" mt="0" puurl="message" pufn="public"
c="gender=m&age1=23&avaURL=http://www.123flashchat.com/a.jpg"(owen's profile)
result="5" ecp="1" ecn="1" mml="256" mpr="5" ebl="1"><UserInfo><UserProfile n="owen"
l="" a="-1" s="" /><TalkMsg b="0" u="0" i="0" color="" fontSize="0" /></UserInfo></Login>
```

When user(owen) enter room: (returned xml from server to client)

```
<Enter id="1" ct="1162281026218" result="0" passMessage="true" name="Default Room"
e="1"><u name="bell" avatar="e1" nickname="bell"
```



```
c="gender=m&age1=28&avaURL=http://1www.123flashchat.com/b.jpg"(bell's profile)
chatmode="1" p="192.168.0.100(Unknown)"><UserProfile n="bell" l="" a="-1" s="" /></u><u
name="owen" a="1" avatar="e1" nickname="owen"
c="gender=m&age1=23&avaURL=http://www.123flashchat.com/a.jpg"(owen's profile)
chatmode="1" p="192.168.0.100(Unknown)"><UserProfile n="owen" l="" a="-1"
s="" /></u></Enter>
```

10. Cross Proxy

Cross Proxy function ensure client can connect to the chat server when user accessing Internet via a proxy server.

Before you reading the configuration content, **please do following preparation:**

1. Make sure your 123flashchat version is at least 6.3.
2. Make sure you have at least one available Public IP Address on your Computer which installed the 123 flash chat server. (IP Address is an identifier for a computer or device on a TCP/IP network.).
3. Prepare an available network port with this Public IP Address (An available network port means this port is not used by any network program by this Public IP Address. Port range: 1~65535)
4. Prepare an available Domain Name binding with your Public IP Address.
(Domain Name and IP Address WHOIS pages can be directly accessed by pointing your browser to www.123flashchat.com or 222.66.76.76.)

You should must ensure the Domain Name that can access the web page embedded the 123flashchat.swf and the Domain Name you prepared share the same domain suffix.

Example:

1.

Web page embedded the 123flashchat.swf:

Domain Name: www.123flashchat.com

IP Address: 222.66.76.76

Port: 80

You prepared:

Domain Name: chat.123flashchat.com

IP Address: 222.77.77.77



Port: 80

The domain name that can access the web page embedded the 123flashchat.swf is :

www.123flashchat.com

The domain name you have prepared is: chat.123flashchat.com

They share the same domain suffix "123flashchat.com", so this is ok.

2.

Web page embedded the 123flashchat.swf:

Domain Name: www.123flashchat.com

IP Address: 222.66.76.76

Port: 80

You prepared:

Domain Name: www.123flashchat.com

IP Address: 222.66.76.76

Port: 35555

The domain name that can access the web page embedded the 123flashchat.swf is :

www.123flashchat.com:80

The domain name you have prepared is: www.123flashchat.com:35555

They share the same domain suffix "123flashchat.com", so this is ok.

3.

Web page embedded the 123flashchat.swf:

Domain Name: www.123flashchat.com

IP Address: 222.66.76.76

Port: 80

You prepared:



Domain Name: www.123livehelp.com

IP Address: 222.77.77.77

Port: 80

The domain name that can access the web page embedded the 123flashchat.swf is :

www.123flashchat.com

The domain name you have prepared is: www.123livehelp.com

One of the domain suffix is "[123flashchat.com](http://www.123flashchat.com)", and the other is "[123livehelp.com](http://www.123livehelp.com)"

They are not share the same domain suffix, so this is not allowed.

10.1 Configuration:

In order to make the cross proxy function working, you should edit following file.

1. fcserver.xml located on <123flashchat installed directory>/server/etc/fcserver.xml
2. client.xml located on <123flashchat installed directory>/client/client.xml
3. proxy.js located on <123flashchat installed directory>/client/proxy.js

Step 1:

Edit fcserver.xml

Find this sentence "`<http-server ip="*" port="35555" enable="On"></http-server>`" in fcserver.xml

This configuration is used to make the chat server starting a http server to ensure the client can communicate with the chat server via http protocol when user accessing Internet through a proxy.

Set the ip value with your prepared Public IP Address, and set the port value with your prepared Port. And restart your chat server.

Step 2:

Edit client.xml

Find this sentence "`<httpServer host="*" port="35555" enable="false"/>`" in client.xml

This configuration is used to make the client can connect to chat http server.



Set the host value with your prepared Domain Name the port value with your prepared Port, and set enable value to true.

Step 3:

Edit proxy.js

Find the variable "my_domain"

Set this variable to your prepared domain suffix

Example:

Prepared Domain: chat.123flashchat.com

Then domain suffix=123flashchat.com

So set variable my_domain="123flashchat.com"

Sample:

Your preparation:

Domain Name: chat.123flashchat.com

Domain suffix: 123flashchat.com

IP Address: 222.77.77.77

Port: 80

Step1: Open fcserver.xml

Step 2: Edit "<http-server ip="*" port="35555" enable="On"></http-server>" with

<http-server ip="222.77.77.77" port="80" enable="On"></http-server>"

Step 3: Restart the chat server

Step 4: Open client.xml

Step 5: Edit "<httpServer host="*" port="35555" enable="false"/>" with

<httpServer host="chat.123flashchat.com" port="80" enable="true"/>



Step 6: Open proxy.js

Step 7: Set the variable my_domain="123flashchat.com"

Congratulation, you have completed all configuration!

-- The END --