



Little Musician User Manual

- ✓ Learn how to maximize your and your baby's Little Musician experience
- ✓ Get to know more about important program features and screens.
- ✓ Find step-by-step guides on everything from installation to playing lessons, customizing lessons and playback, creating your own lessons and getting technical support!

Introduction

Thank you for purchasing the Little Musician Learning System!

The decision you have taken to invest in your child's learning is about to change your and your child's lives for the better. We really believe that with Little Musician, we have taken all of the difficulty and inconvenience out of teaching for you. Before you begin using your Little Musician Learning System, there are just a few things we would urge you to read...

Teaching Your Young Child Music



Teaching Your Young Child Music ([download here](#)) will answer many of the questions you might have such as, 'Why teach music to young children?,' 'Why is Singing So Important?,' and 'What are the different approaches to teaching music?,' as well as understand more about the Solfège system that plays a very prominent role in Little Musician.

Teaching With Little Musician



The accompanying Teaching With Little Musician booklet ([download here](#)), along with the Beginner's Tutorial in Little Musician's Start Guide, will help you get the most out of Little Musician, so do take your time to go through it!

Got a question?

Check out the comprehensive articles at the [BrillKids Support Help Desk!](#)

Last but certainly not least...

The number one rule of teaching is to have fun doing it! Results should never be the focus of lessons. Instead, treat lessons primarily as a time for bonding, and enjoy the learning experience with your child.

Do remember to **share your teaching experiences** with us at the [BrillKids Forum](#) - we'd love to hear from you!

Happy teaching!

Your  Team

Installing and Activating Little Musician

Before you install Little Musician, make sure that your computer has a working Internet connection and that you have an active BrillKids subscription. To sign up for an account, go to the [BrillKids website](#).



You may install Little Musician using the downloadable files from your BrillKids Account (if you bought a download-only product), or by using the software and content disc that came with your package (if you bought a box set product).

Once you have installed and activated Little Musician, you may already start playing lessons for your child!

Installing Little Musician from your BrillKids Account

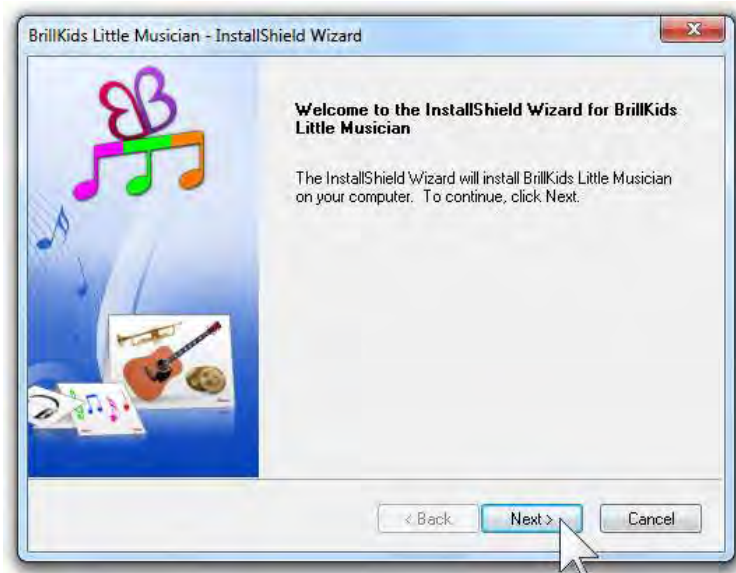
Sign in to your BrillKids Account and go to your [Account Management](#) page. Go to **My Purchases** and select **Little Musician Software** from the left-hand navigation panel.

Click on the **download button** to get the software installer for the latest version of Little Musician.



Once the download is complete, open the *.zip file using an extracting program and double click on the “Little_Musician_install.exe” file inside.

The InstallShield Wizard will guide you through the entire process of installing Little Musician on your computer. Click **Next** and follow the prompts to finish installing Little Musician.



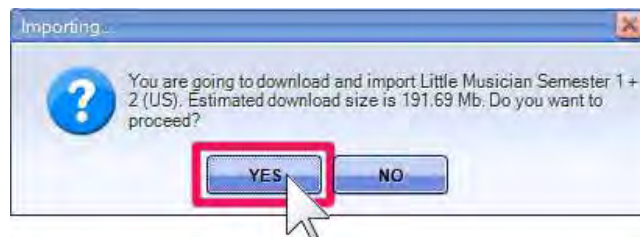
Once you’ve installed Little Musician, go back to your [Account Management](#) page and select **Curriculum & License Keys** from the left-hand navigation panel. You should see the download link for your course content file and your license key in this section.

NOTE: If you don't see your license key and content file link (this happens when you got your Little Musician as a gift), type in or copy-paste your Little Musician license key as it appears in the gift email you received.

Click on the **download link or button** for your Little Musician Curriculum content. Depending on the browser you're using, a pop-up message may appear, asking if you want to “allow this website to open a program in your computer” - choose **Allow / OK / Launch Application**.



Little Musician will open automatically to start importing your license key and curriculum content. Please **do not close Little Musician or disconnect from the Internet** while there is an ongoing download and import process (this may take a while because of the large number of media files included in the lessons).



NOTE: In case you need to stop the download process, click on the **Abort** button in the download progress dialog. When asked if you want to resume the

download later, click **Yes**. The next time you open Little Musician, you will be prompted to continue downloading and importing your content.

Once Little Musician has finished importing your license key and curriculum content, you should see an “(Activated)” label beside the software version written on the Little Musician window’s title bar. Also, you should be able to access your Semester 1 and 2 lessons from the **Play Courses** or **Play & Edit Screens**.



Installing Little Musician from your Software and Content CD

Insert your **BrillKids Little Musician Software and Content Disc** in your computer's CD drive and close your CD drive.

The InstallShield Wizard will guide you through the entire process of installing Little Musician on your computer. Click **Next** to start the installation process.



In the License Agreement screen, please read the terms carefully. If you accept the terms, choose the option *“I accept the terms of the license agreement”* then click **Next**.



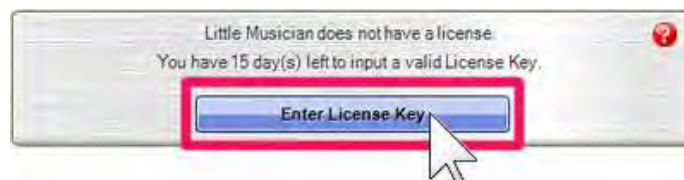
Continue with the installation by clicking **Next** and **Install** in the next screens. Please *do not close the InstallShield Wizard, remove the installer CD from*

your CD drive, or turn off your computer while there is an ongoing installation process (this may take a while because the wizard will be installing both the Little Musician software and the curriculum content).

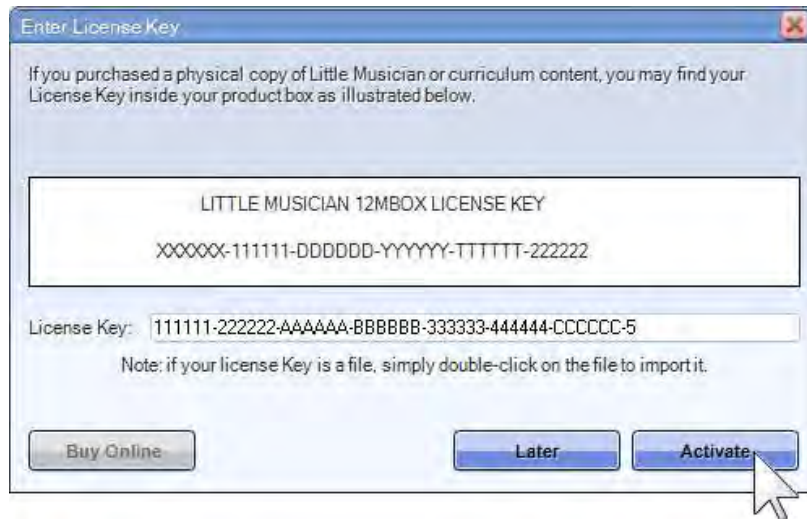
Once the wizard has completed the installation process, choose to “Launch BrillKids Little Musician” and click **Finish** to exit the InstallShield Wizard.



You will notice that Little Musician isn't activated yet, and there's a “Trial Version” label in the Little Musician window's title bar. Connect to the Internet and click on **Enter License Key** at the upper right part of the Play Courses screen to open the license key prompt.



Type in your license key in the box labeled “License Key” then click on the **Activate** button.



NOTE: You can find your license key in your CD box, your BrillKids purchase receipt, your [Account Management](#) page or the gift email you received (if someone bought Little Musician for you as a gift).

Once you have successfully activated Little Musician, you should see an “(Activated)” label beside the software version written on the Little Musician window’s title bar. Also, you should be able to access your Semester 1 and 2 lessons from the **Play Courses** or **Play & Edit Screens**.



Other Components Installed with Little Musician

Depending on your computer, the InstallShield Wizard may prompt you to install additional components.

Choose to install these additional components. Follow the prompts to finish installing each component. Once you've finished installing these required components you can continue installing Little Musician.

Microsoft .NET Framework - BrillKids Learning Systems require an installation of Microsoft .NET Framework 2.0 or higher in order to work properly. If your computer is running on Windows Vista or Windows 7, you do not need to do this step because this comes preinstalled in your computer. Otherwise, if you are using Windows XP or an earlier operating system, you must install this software first before continuing the Little Musician installation. For more information on the .NET Framework, go to [this page](#).

NOTE: The Microsoft .NET Framework is a ONE-TIME installation requirement for all BrillKids Learning Systems. Once you have it installed, you won't need to install it again.

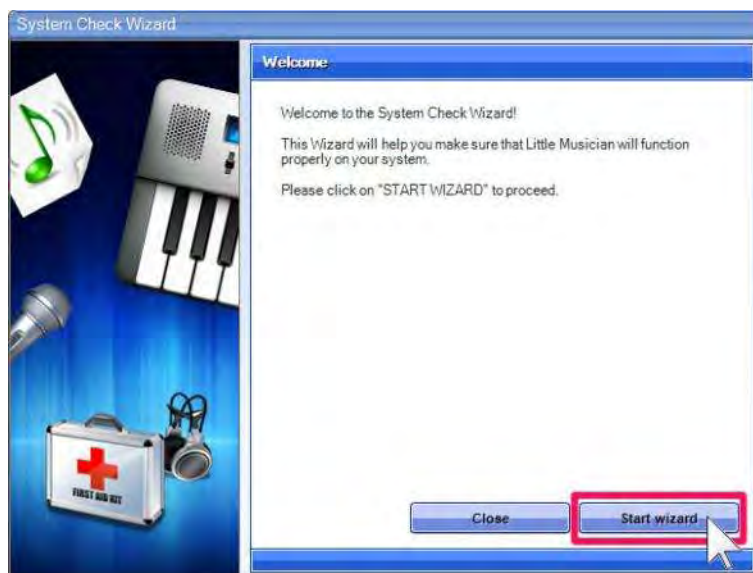
FFDShow Codec Pack - Installing the FFDSHOW Codec Pack, a widely known and commonly used audio and video codec pack, will ensure that your computer efficiently processes the media files included in your Little Musician lessons.

This way you can be sure that the pronunciation audio, music, and videos will always play smoothly whenever you play back lessons for your baby!

[Adobe Flash Player](#) - BrillKids Learning Systems use Adobe Flash Player for playing video elements included in the lessons. Your BrillKids software installer will prompt you to install the latest Flash Player version if you don't have it installed in your computer yet.

The System Check Wizard

The **System Check Wizard** will appear the first time you open Little Musician to help ensure clear audio during lesson playback. Click **Start Wizard** to begin troubleshooting.



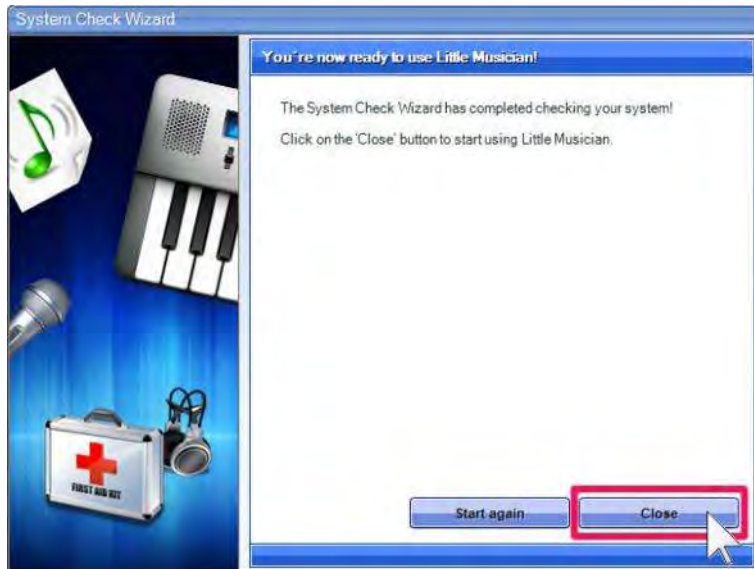
Click **Play Sample Audio** and the Wizard will play a few sample audio files.



If you heard all audio samples clearly and completely, click **Next Step**. Otherwise, click **Troubleshoot** and the Wizard will find what's causing the problem and apply the necessary fixes.



Once the Wizard has finished, click **Close** to exit the Wizard.



How to Start Little Musician

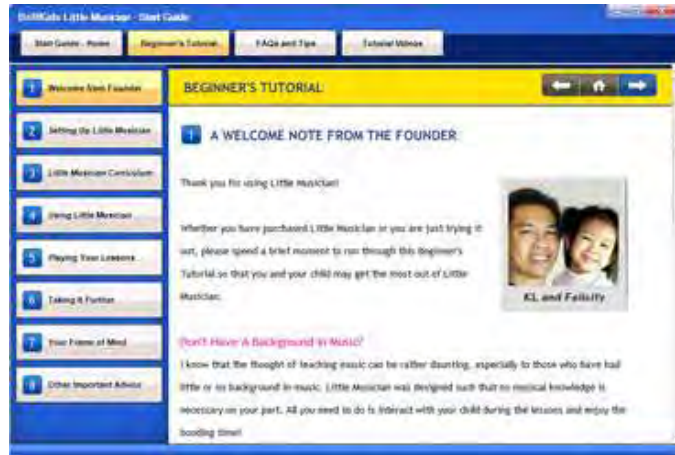
To open your program, click on the **Little Musician** icon located on your Desktop, Quick Launch, or Start Menu.



To help you get started with Little Musician, the **Start Guide** window will pop up when you open Little Musician for the first time.

The Start Guide

The Little Musician **Start Guide** introduces you to Little Musician. The **Start Guide's** homepage will show you the latest news, announcements and updates from BrillKids. In this window you will find tutorials and additional information that will help you get the most out of your Little Musician Learning System.



NOTE: You may choose not to show the **Start Guide** whenever you open Little Musician by unchecking the box at the bottom of the **Start Guide** window. To open the **Start Guide** later on, click on the **Start Guide** button at the top right part of the Little Musician window.

Beginner's Tutorial

You may want to spend a few minutes to go through the Beginner's Tutorial so that you have an idea about how Little Musician works and to familiarize yourself with its features.

FAQs and Tips

The FAQs and Tips section provides answers to frequently asked questions about Little Musician. It also provides useful information on how to maximize you and your baby's Little Musician experience.

Tutorial Videos

To begin viewing a video tutorial, just click on the video you want to play and your selection will be shown. Be sure to turn on your speakers so you won't miss the tutorial's narrations!

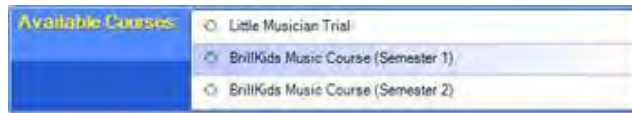
The Play Courses Screen

The **Play Courses** Screen is very easy to use - from here you can start playing course lessons for your baby with just a few clicks!



Available Courses

You can begin playing lessons on your Little Musician as soon as you've installed it up! Your **Available Courses** panel will be pre-populated with the course lessons you have imported.



Day Navigation Bar

The **Day Navigation Bar** in the **Play Courses** Screen makes it easy for you to navigate between days and lessons in your selected curriculum. Just click the **Back** button on the left side of the bar to go back one day, or click the **Next** button to go forward one day. Depending on the day you have selected, the corresponding lessons will be displayed in the panel below the **Day Navigation Bar**.



NOTE: To jump to a specific day, just click in the middle of the **Day Navigation Bar** and a dropdown list of days will appear. Select a day from the list to view the lessons for that specific day.

Play Panel

The **Play Panel** along the bottom of the Little Musician window provides additional options for you to customize how presentations play back for your child. For more details about the Play Panel, go to [The Play Panel](#) section.

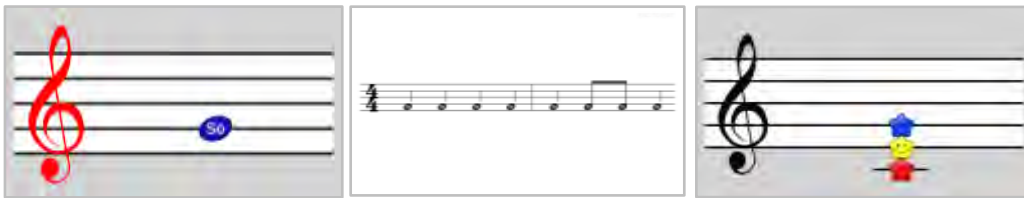


About the Different Lesson Types

In Little Musician, lessons are organized under **Music Notes**, **Clap-Along**, **Knowledge** and **Courses**. Learn more about the different types of Little Musician lessons below:

Music Notes

The **Music Notes** tab contains lessons that teach the basic elements of music such as note sounds and names, chords, scales, Solfège and rhythm syllables.



Clap-Along

The **Clap-Along** tab contains lessons that are designed to introduce your child to rhythm and beats. During these lessons, children songs (such as Twinkle, Twinkle Little Star) are played, and your child is encouraged to clap along to the beat.



Knowledge

The Knowledge tab includes lessons that introduce your child to musical instruments, famous composers, and classical music.



Courses

The Little Musician curriculum is divided into semesters containing 130 days' worth of lessons. Each course lesson is designed to teach your baby in a progressive manner and is composed of the following sessions:

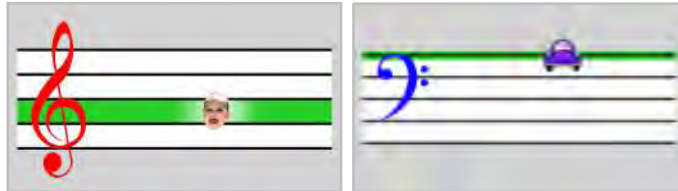
Chord Recognition

These lessons train your child to hear and recognize nine basic chords. The process is similar to the Eguchi method used in Japan, which some consider to be the best way to foster the 'perfect pitch' ability.



Note Sounds

These are the most basic of lessons, where your child will learn to associate pitch with the written note on the musical staff. It's a good way to show how higher pitched notes are written higher and lower pitched notes are written lower on the staff.



Solfège

These lessons teach individual notes in Solfège (eg., Do, Re, Mi), with notes shown on the musical staff. During the lessons, it's very important to sing out the note you hear, and - if possible - encourage your child to sing it out, too.



Exercises

These are short exercises which help train the ear (Hear and Sing), and promote sight-reading of notes (See and Sing).



Clap-Along

Clap-Along lessons are designed to give your child an introduction to rhythm and beats. During these lessons, children's songs (such as Twinkle, Twinkle Little Star) are played, and your child is encouraged to clap along to the beat.



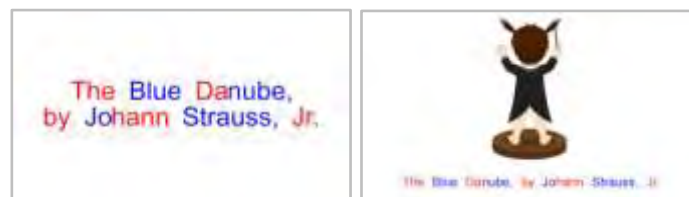
Music Knowledge

In these lessons, your child will be introduced to different musical instruments and famous classic composers.



Music Appreciation

These lessons expose your child to classical music using clips from fifty of the most popular classical pieces, such as Beethoven's Fifth Symphony.



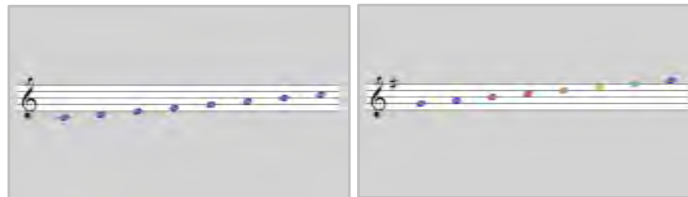
Rhythm

Rhythm lessons will introduce your child to rhythm syllables, such as "Ta" for quarter notes/crotchets, and "Ti" for eighth notes/quavers.



Scales

Through these lessons, your child will see and hear different scales in different keys, in both major and minor variations.



Keyboard

Keyboard lessons will introduce your child to the keyboard, showing how the different black and white keys of the keyboard correspond to the different Solfège notes and music pitches.



How to Play Lessons

You can play lessons from the **Play Courses** Screen, or you can go to the **Play & Edit** Screen to play lessons from the **Music Notes**, **Clap-Along**, **Knowledge**, and **Courses** tabs.

How to Play Courses

- Go to the **Play Courses** Screen.
- The **Available Courses** tab displays the courses that came with your Little Musician.
- Choose the lesson day you want to play, starting with Day 1.
- Simply pressing the **Play** button will play the session(s) for that day, going through each part of the session.
- To stop the presentation at any time, simply press the **Esc** key on your keyboard.



How to Play Music Notes, Clap-Along, and Knowledge Lessons

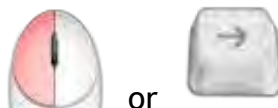
- Go to the **Play & Edit** Screen and toggle **Music Notes**, **Clap-Along**, or **Knowledge**.
- Select the lesson you want to play.
- Click on the **Play** button.



Keys to Use During Playback

During playback (your Little Musician lessons), you will need to know which keys and mouse clicks you can use to navigate your way through a lesson.

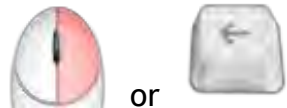
To *advance to the next slide*, use the **Left-Click** on your mouse, or press the **Right Arrow**, **Spacebar** or **Enter** on your keyboard.



To *repeat the slide*, click on your **Mouse-Wheel** or press the **Down Arrow** on your keyboard.



To *go back to the previous slide*, use the **Right-Click** on your mouse or press the **Left Arrow** on your keyboard.



To *exit playback*, press the **Esc** key on your keyboard to return to the Little Musician window.



The Play & Edit Screen

Little Musician allows you to fully customize lessons to fit your baby's needs via the **Play & Edit** Screen.



The Play & Edit Screen consists of three panels: the Lesson Panel, the Settings Panel, and the Play Panel.

Lesson Panel

Located at the left side of the Play & Edit Screen, the Lesson Panel displays a list of Music Notes, Clap-Along, Knowledge, and Course lessons currently available in your Little Musician. Simply click on the corresponding button at the top part of your Lesson Panel to toggle the set of lessons you want to play.



Organize Lessons into Folders

To help organize your lessons, create folders by clicking on the **New Folder** button at the bottom of the **Lesson Panel** and type in your new folder's name.

You may even add folders within a folder as needed!



To place lessons in your new folder, select a lesson and then drag-and-drop it into your folder - you can also transfer many lessons at a time by holding your **Shift** or **Ctrl** key while selecting lessons.

How to Create a Lesson

To create a lesson, click on the **New** button at the bottom of the **Lesson Panel**.

A lesson settings window will pop up, which allows you to customize your lesson. After changing the settings, click on the **Save** button to create your lesson.



How to Edit a Lesson

To edit a lesson, select the lesson you want to edit and click on the **Edit** button at the bottom of the **Lesson Panel**. A lesson settings window will pop up, which allows you to customize your lesson. After changing the settings, click on the **Save** button to save the settings for your lesson.



How to Delete a Lesson

To delete a lesson, select the item you want to delete and click on the **Delete** button at the bottom of the **Lesson Panel**. A confirmation window will pop up - click on **Yes** to confirm the action, or **No** to cancel.



Deleted items can be found in the **Lesson Panel's Trash Bin**, which you'll find at the end of the lesson list. This is also where you can restore your previously deleted words or lessons, or delete items permanently.

How to Move a Lesson Up/Down the List

If you want to move a lesson up or down the list, just select the lesson you want to move and click on the **Up** or **Down Arrow** button at the bottom of the **Lesson Panel**.



To move multiple lessons, hold your **Shift** or **Ctrl** key while selecting lessons and then click on the **Up** or **Down Arrow** button.

How to Rename a Lesson

To rename a lesson, select the lesson you want to rename and press the **Enter** key on your keyboard. Your cursor will change to a vertical bar - type in a new name for your lesson and press the **Enter** key on your keyboard.

Settings Panel

On the right side of the **Play & Edit Screen** is the **Settings Panel**. Here you can preview your lessons' content and customize playback settings for your selected lesson.



What you'll see in the **Settings Panel** will depend on which lesson type you select from the **Lesson Panel**:

Music Notes, Clap-Along, and Courses

When you select a Music Notes, Clap-Along, or any Course lesson from the **Lesson Panel**, the **Settings Panel** will show you a preview of the lesson content

in the upper half of the panel. To customize the content settings for your selected lesson, click on the **Settings** button.



The lower half of the **Settings Panel** shows a preview of the **Sound and Display** settings currently applied to your selected lesson. To change the sound and display settings for your selected lesson, click on the **Settings** button.



The **Allow override** box in the lower section allows you to override the settings in the **Settings Panels**. If the **Override** button in the **Play Panel** is turned on (green light), all the playback settings configured in the **Override Settings** window will be applied during playback (i.e., the individual playback settings set for each lesson will not take effect).

Knowledge

The **Settings Panel** for Knowledge lessons is divided into two subpanels: the **Word Settings Panel** and the **Playback Settings Panel**.

The **Word Settings Panel** shows you the list of words included in the lesson. Here you can preview the media files attached to the words as well as edit the words in your selected lesson.



The **Word List** on the left side of the panel shows you the words that will be shown during playback in the default order (i.e., as originally listed) in your Knowledge lesson. You can use the buttons below the word list to change how the words are listed as well as edit, delete, and add new words to your Knowledge lesson (full editing features are only available for licensed Little Reader users).

- *New Word* - Add a new word to your selected Knowledge lesson by clicking on the **New Word** button.

- *Edit Word* - Select the word you want to edit and click on the **Edit** button to customize the media files attached to that word.
- *Remove Word* - Select the word you want to delete and click on the **Delete** button. This will delete the word from your Word Library. If you just want to remove the word from the Knowledge lesson, use the **Edit Lesson** function.

The **Preview Panel** beside the Word List lets you preview the images, videos, sound effects and pronunciation recordings for each word in your Knowledge lesson.



- *Word Display* - This displays the word that will be shown during playback.
- *Pronunciation* - This lets you listen to each pronunciation that will be played during playback.
- *Picture* - This lets you view the images that will be shown during playback.

- Video - This lets you watch the videos that will be shown during playback.
- *Picture Audio* - This lets you listen to each sound effect or music clip that will be played during playback.

NOTE: To toggle the next or previous media file, just click on the **Left** or **Right Arrow** buttons at the bottom of the **Preview Panel**.

The **Playback Settings Panel** lets you customize how the words and media files in each Knowledge lesson are shown during playback.



Edit Multiple Lessons

With the **Edit Multiple Items** function you can adjust playback settings for several lessons at once, rather than changing settings for each lesson one at a time.



How to Edit Multiple Lessons

- Go to the **Play & Edit** Screen.
- Depending on which items you want to edit, toggle **Music Notes**, **Clap-Along**, **Knowledge**, or **Courses** from the left side of the screen.
- Select the lessons you want to edit while holding down the **Ctrl** key. Alternatively, select the first lesson and hold the **Shift** key, then select the last lesson in the list.
- Once you have made your selection, an **Edit Lessons** button will appear in the right side of the screen. Click on the **Edit Lessons** button and the **Edit Multiple Items** window will pop up.
- After changing the settings for your lessons, click on the **Apply** button to finalize your settings.



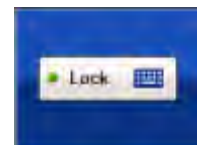
The Play Panel

Aside from the **Settings Panel**, the **Play Panel** along the bottom of the **Play & Edit Screen** provides additional options for you to further customize how presentations play back for your child.



Keyboard Lock

When the **Keyboard Lock** button is turned on (green light), all power will be removed from your keyboard during playback (except the **Esc** key to exit the presentation). It is recommended that you turn the



Keyboard Lock on especially if your baby often likes to play with the keyboard during the lesson.

Override

When the **Override** button is turned on (green light), all playback settings set in the **Override Settings** window will take effect during playback, disregarding any playback settings previously set in the **Settings Panel** for each lesson.



Click on the **Cog** button next to the **Override** button to configure and save universal playback settings in the **Override Settings** window, as shown below:



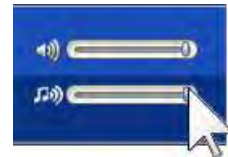
In the **Override Settings** window, you may choose to turn on only specific settings so that only those settings will be overridden, and the rest of the settings will be left as previously configured in each lesson. For example, if the **Split Display Mode** setting under the **Knowledge** tab is turned on, all the words played back will be flashed in split colors, *even for categories originally in normal display mode*.

Volume Settings

Voice & Clap Volume - This lets you control the loudness or softness of all voice (pronunciations) and clap sounds throughout Little Musician.



Music Volume - This lets you control the loudness or softness of all music clips and instrument sounds throughout Little Musician.



NOTE: You can further increase or decrease volume through your computer and speaker volume controls.

Clap-Along Settings

When you select any Clap-Along lesson from the **Play & Edit Screen's Clap-Along** or **Courses** tabs, the Clap-Along playback settings will be displayed between the Play button and the Override Button. From here you can quickly change how your Clap-Along lesson will be played.



Show Icon & Character - The button on the left allows you to show or hide the falling icon, while the button on the right lets you show or hide the clapping animated character. To turn on either or both icon and character, click once on

the corresponding button so that the light turns green. Click the button once to turn it off, and the light will turn red.



Clap Beats - This allows you to select the type of beat you want to clap along to during playback (e.g., 1 and 2, Every Beat, Melody, etc.).



Tempo - This controls the speed or pace of the music and clapping during playback. Move the slider towards the right side of the bar for a faster tempo, or move the slider to the left for a slower tempo. If you want to go back to the song's original tempo, click on the **Default** button.

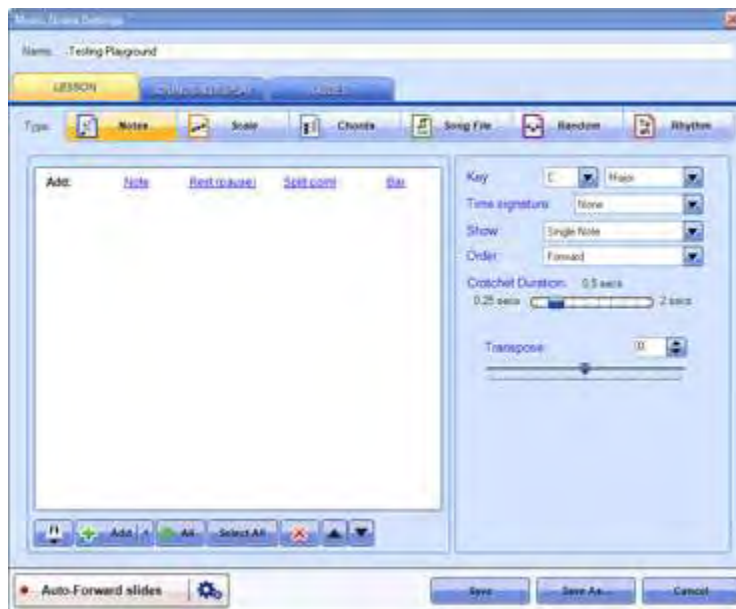


Customizing Lesson Settings

To customize your Music Notes and Clap-Along lesson settings, go to the **Play & Edit** Screen. Select the lesson you want to edit from the **Lesson Panel** on the left side of the screen then click on the **Settings** button in the right side of the screen.

Music Notes Lesson Settings

The Music Notes Settings window lets you create and customize different types of lessons, such as Notes, Scales, Chords, Songs, and Rhythm.



Lesson Tab

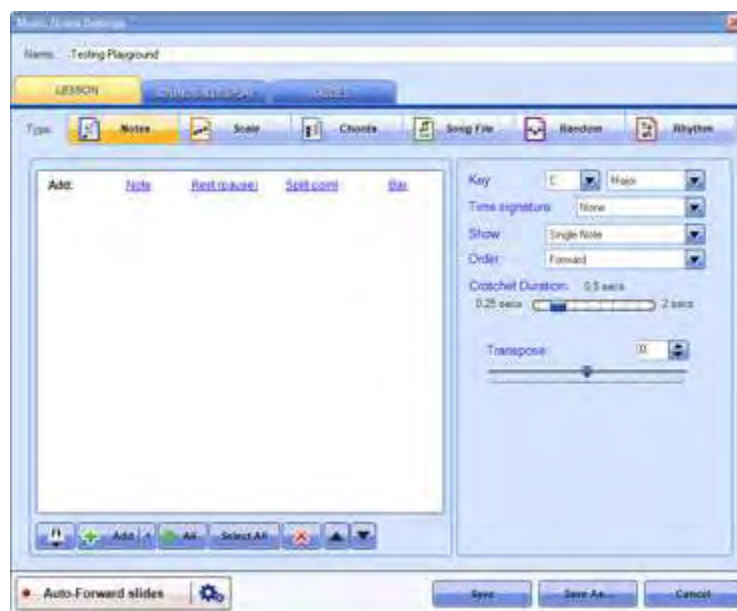
At the top of the Music Notes Settings window's Lesson tab, you can select from the following types of Music Notes lessons: Notes, Scale, Chords, Song File, Random, and Rhythm.



Notes

In this lesson type, you can add individual notes of your choice, giving you the greatest flexibility over your Music Notes lesson. You can add notes in two ways: by using the keyboard display, or by adding notes manually.

The notes you add will be listed in Notes box (at the left side of the window). The order in which your notes are listed will translate to how these are written on the staff (or stave) during playback.



Adding Notes Using the Keyboard Display

Toggle the **Keyboard Display** by clicking on the **keyboard** button at the lower right part of the window.



Choose the note value you want to add from selection on the left side of the **Keyboard Display** (e.g., whole note, quarter note, etc.)



You may use your mouse to click on the keys and preview what you want to record (alternatively, you may click the keyboard keys that correspond to the keys in the Keyboard Display). Use the horizontal scrollbar below the **Keyboard Display** to go to the different octaves of the keyboard.

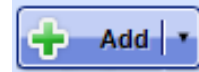
When you're ready to create your Notes lesson, click on the **Rec** button (it will change to a Stop button), select a note value, then click on the keys in the **Keyboard Display** to start adding notes to the staff. Once you're done, click on the **Stop** button to stop recording.

Adding Notes Manually

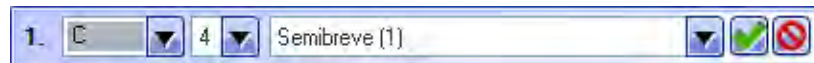
In the Notes box on the left side of the window, click on **Note**, **Rest (pause)**, **Split Point**, or **Bar** depending on what you want to add to your lesson.



Alternatively, you may click on the **Add** button at the bottom of the notes box to add a note. Click on the **expand** button beside the Add button to select **Rest (pause)**, **Split Point**, or **Bar** from a dropdown menu.



Once you've added a note, you may edit it further to specify an octave or note value for it from the corresponding dropdown list. When you're done, click on the green check button to save the changes, or simply continue adding notes to your list (this will save the changes in the previous note automatically).



Adding Rests, Split Points and Bars

Add a **Rest (pause)** to the Notes box if you want to have a pause during your Notes lesson.

A **Split Point** lets you control which group of notes will be displayed on the staff per slide. Setting split points is most useful when your Notes lesson is set to show "Multiple Notes" during playback.

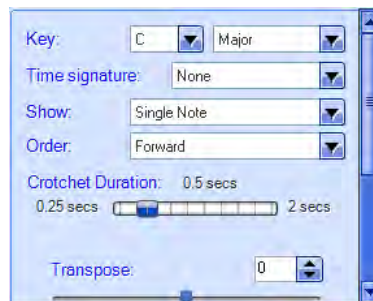
Add a **Bar** to divide notes into measures. Like split points, adding bar lines is most useful when your Notes lesson is set to show “Multiple Notes” during playback.

Editing Notes, Rests, Split Points and Bars

You may preview, edit or delete any Note, Rest, Split Point, or Bar you’ve added to your Notes box by clicking on the corresponding buttons beside it

Notes Lesson Settings

The right side of the window contains several lesson settings which you can use to customize your Notes lesson further.



Set which **Key**, **Time Signature**, playback **Order** and **Crotchet Duration** (i.e., how long a note is played in absolute time) will be used when your Notes lesson is played.

Select how Little Musician will Show notes during playback:

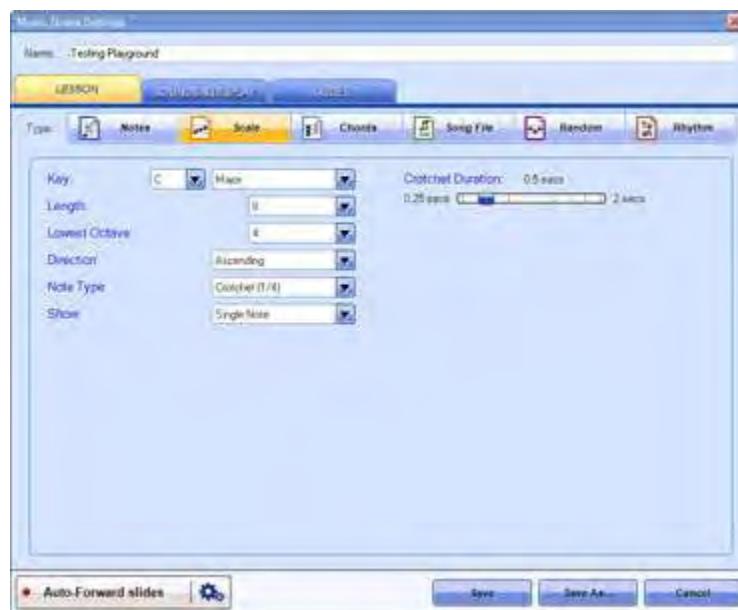
- **Single Note** - one note is displayed per slide

- **Multiple Notes** - several notes will be displayed per slide (this can be limited via the **Notes per Slide** setting)
- **Note Scroll** - this will show notes moving across the staff

Transpose the notes you've added up or down by semitones, and adjust the **Tempo** (when Note Scroll is selected).

Scale

Scale lessons let you show an entire scale automatically during playback. Scales in any key can be set, including Major, Harmonic Minor, Melodic Minor, and Natural Minor types.



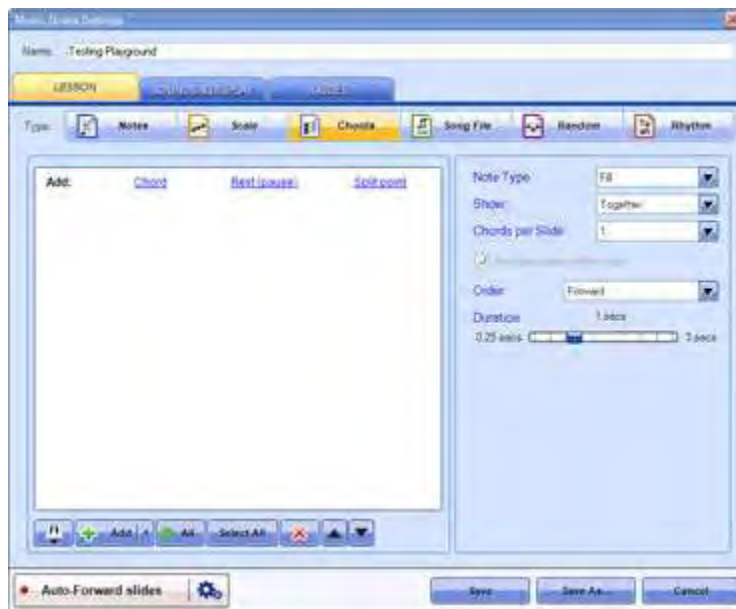
Set how many notes in your Scale will be played via the **Length** setting, with 8 being one octave, 15 being two octaves, and so on. The **Direction** setting lets

you choose whether your Scale will be played in an ascending or descending direction, or in a mixed or random direction.

Lowest Octave indicates the octave number of the lowest note that will be played, with the default being “4” (corresponding to Middle C or C4).

Chords

Just like Notes lessons, this lets you add chords using the Keyboard Display or manually.



Adding Chords Using the Keyboard Display

Toggle the **Keyboard Display** by clicking on the **keyboard** button at the lower right part of the window.



Choose the chord you want to add from selection on the left side of the **Keyboard Display** (e.g., Major, minor, etc.)

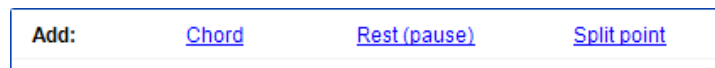


You may use your mouse to click on the keys and preview what you want to record (alternatively, you may click the keyboard keys that correspond to the keys in the Keyboard Display). Use the horizontal scrollbar below the **Keyboard Display** to go to the different octaves of the keyboard.

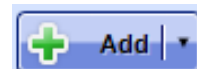
When you're ready to create your Chords lesson, click on the **Rec** button (it will change to a Stop button), select a chord type, then click on the keys in the **Keyboard Display** to start adding chords to the Chords box. Once you're done, click on the **Stop** button to stop recording.

Adding Chords Manually

In the Chords box on the left side of the window, click on **Chord**, **Rest (pause)**, or **Split Point** depending on what you want to add to your lesson.

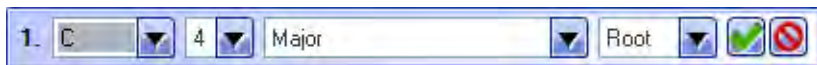


Alternatively, you may click on the **Add** button at the bottom of the



chords box to add a chord. Click on the **expand** button beside the Add button to select **Rest (pause)**, or **Split Point** from a dropdown menu.

Once you've added a chord, you may edit it further - for C, F, and G Major Chords, you have an additional option to set chord inversions (root, first inversion, and second inversion). When you're done editing, click on the green check button to save the changes, or simply continue adding chords to your list (this will save the changes in the previous chord automatically).



Similar to “Notes” mode, you can edit, delete, and add rests and split points to the chord items list, as well as change various lesson settings.

Adding Rests and Split Points

Add a **Rest (pause)** to the Chords box if you want to have a pause during your Chords lesson.

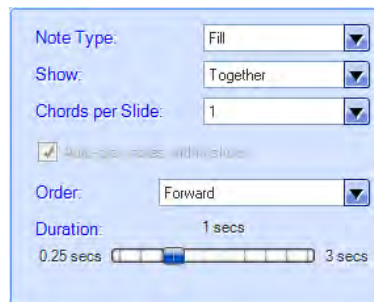
A **Split Point** lets you control which group of chords will be displayed on the staff per slide. Setting split points is most useful when your Chords lesson is set to show chords “Together” during playback.

Editing Notes, Rests, Split Points and Bars

You may preview, edit or delete any Chord, Rest, or Split Point you've added to your Chords box by clicking on the corresponding buttons beside it

Chords Lesson Settings

The right side of the window contains several lesson settings which you can use to customize your Chords lesson further.



Set which **Note Type**, playback **Order** and **Duration** (i.e., how long a chord is played in absolute time) will be used when your Chords lesson is played.

Select how Little Musician will Show notes during playback: **Together**, **Separated**, or **On Click**.

Song File

This lesson type allows you to play back Midi files (in '*.mid' format), from the song list in your Media Library.



By default, the **Song File** dropdown list will display the list of songs that come pre-installed with Little Musician. To add your own midi file, select **ADD NEW...** at the end of the list. Alternatively, you may manage the list of available midi songs in the **Midi Songs** tab of the **Media Library** Screen.

The “Real Time” option allows you to choose whether the song plays back in real time as specified in the midi file or note-by-note from the melody track (Channel 1 of the midi file).

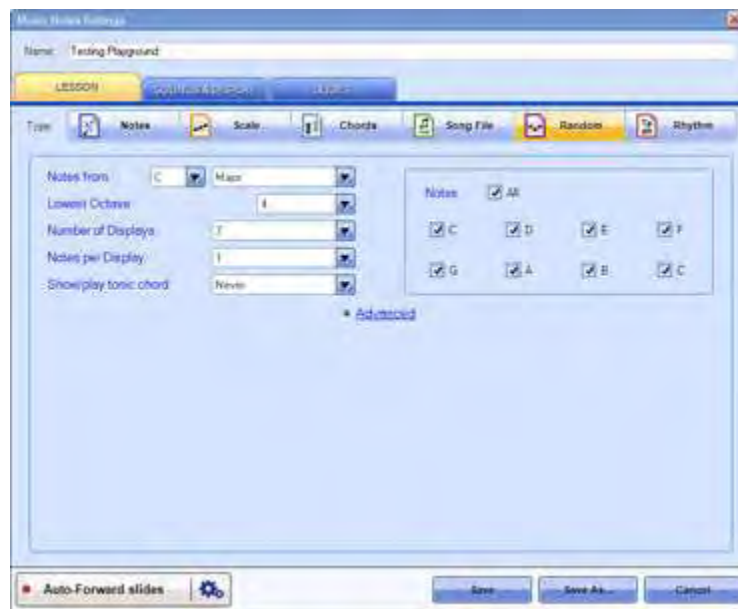
You can also choose to play the melody track only or all tracks (full instrumentation) using the “Melody only” option.

The “Melody +12/-12” slider allows you to shift the melody track up and down by octaves, and “Transpose” allows you to transpose the entire midi song up and down by semitones.

You may also change the tempo (speed) of the song or use the default tempo as set in the midi file.

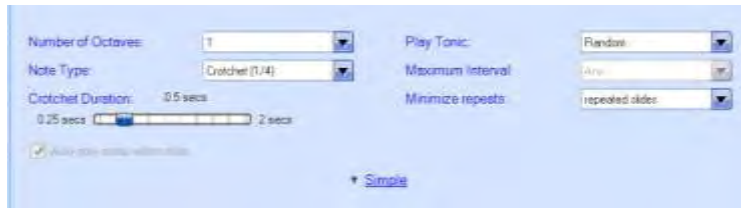
Random

This lesson type allows you to generate random notes based on certain criteria you specify, and is especially useful for exercises.



“Show/play tonic chord” allows you to play the tonic chord of the key that has been set, so that the viewer/listener knows what the tonic note is as a reference point, which is useful for relative pitch training.

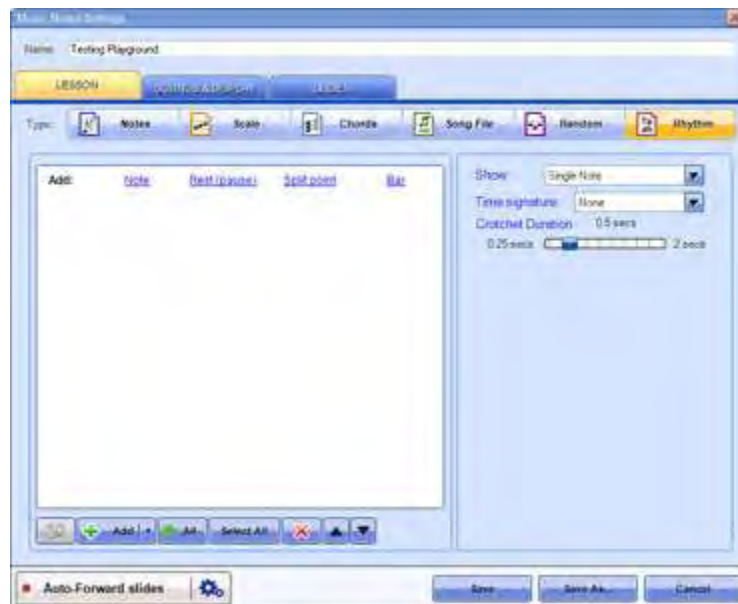
The “Play tonic” option will ensure that the tonic note is always included in the generated notes, either as the first note or last note in the sequence of random notes.



“Maximum Interval” will restrict the interval between two consecutive notes so that the ‘jump’ from one note to the next will not be too far, so the overall note sequence would sound more natural. “Minimize repeats” will minimize the random occurrences when notes are repeated consecutively.

Rhythm

This lesson type allows you to teach rhythm syllables such as “Ta”, and works in a very similar fashion to the “Notes” type described above.



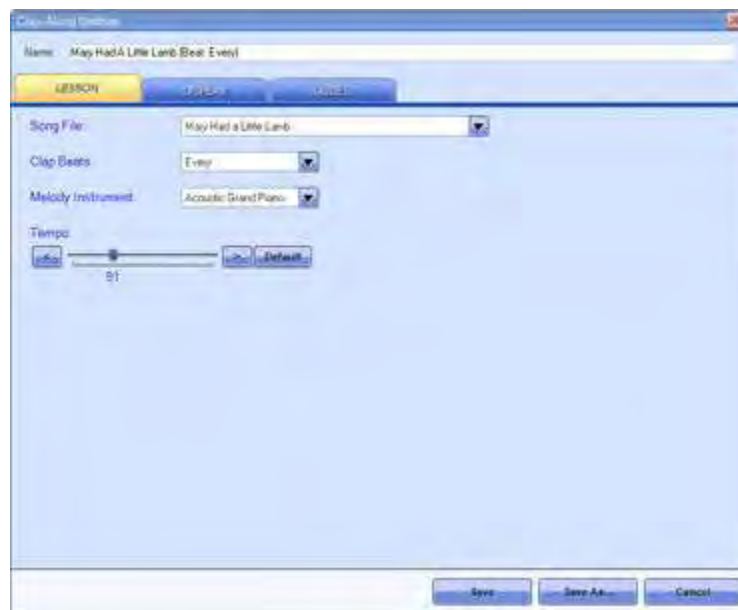
Rhythm notes can only be added manually, and you may add whole notes (semibreves), half notes (minims), quarter notes (crotchets), eighth notes (quavers), and pairs of sixteenth notes (semiquavers).

You may also select multiple eighth notes (by holding down the **Ctrl** key and clicking on multiple items) and create a beam to connect those notes by clicking the beam button.



Clap-Along Lesson Settings

This lesson type allows you to teach your child rhythm and beats. During these lessons, children songs (such as Twinkle, Twinkle Little Star) are played.



Under “Song File”, you can select the song you wish play. By default, the ‘Song File’ list will display the list of midi songs that come pre-installed with Little

Musician. To add your own midi song file, select **ADD NEW...** at the end of the list. You may also manage the list of available midi songs under the **Media Library** Screen (go to the **Midi Songs** tab).

“Clap Beats” allows you to select the different beats for clapping. For example, “1” means your child will be prompted to clap on the first beat of every bar, and “2 and 4” on the second and fourth beat of every bar, etc. “Mixed 1” will randomly choose a different clap beat every eight bars, and “Mixed 2” every four bars.

NOTE: Clap beats only appear for bars when the melody track is active.

You can change the melody instrument under “Melody Instrument” and the speed of the playback under “Tempo”.

Customizing Sounds & Display Settings

To customize the **Sounds & Display** settings for your Music Notes and Clap-Along lessons, go to the **Play & Edit** Screen. Select the lesson you want to edit from the **Lesson Panel** on the left side of the screen then click on the **Settings** button in the right side of the screen.

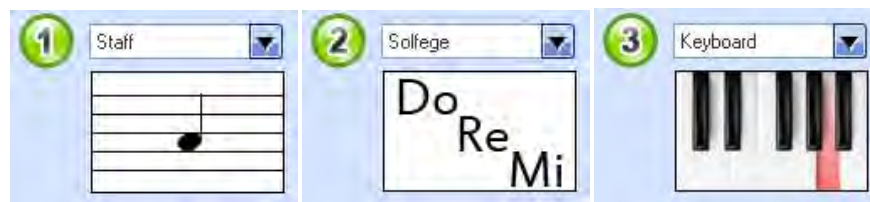
Music Notes Sounds & Display Settings

Once you're done customizing your Music Notes lesson settings, the next step is to customize the sounds and images that get played along with it.



Display Settings

In general, each lesson can be shown in up to 3 separate displays. For example, in a Scale lesson set to show a C Major scale, each note in the scale can be displayed in 3 consecutive and different ways before the next note is displayed.



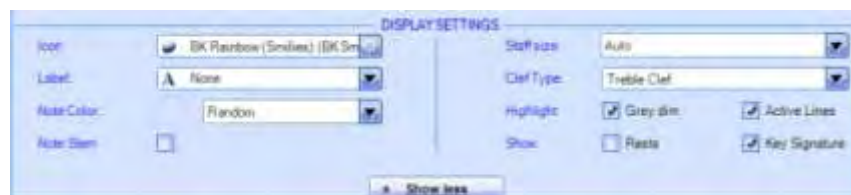
Each display lets you to choose from a selection of display types, depending on the lesson type you've selected. For example, for a Notes lesson, the lesson can be displayed in any of these ways:

- *Staff* - each note will be shown on the staff (one note per slide)
- *Note Name* - each note's name will be flashed on screen
- *Solfège* - each note's Solfège syllable will be flashed on screen
- *Keyboard* - each note will be shown as a colored key in the keyboard
- *Blank* - a question mark ('?') will be displayed on screen

To add a display, click on **+Add**. To remove added displays, click on the **X** button on the top right corner of the display. Each display can be further customized by clicking on **Show More** below each display - this will toggle the **Advanced Display Settings** panel for your selected display

Advanced Display Settings

To toggle advanced settings for each display, click on **Show More** below each display, or check the box for **Always show display settings** (at the bottom of the window).



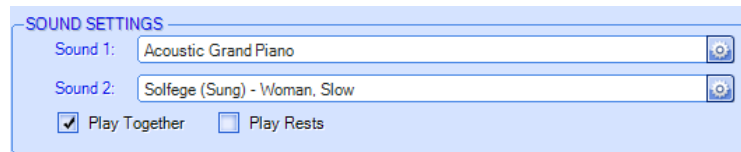
Through the **Advanced Display Settings** panel, you can customize how your selected display type will appear during lesson playback:

- *Icon* - Specify custom icon sets or groups instead of (or in addition to) the regular note heads. You can manage the icon sets and icon groups available in your library by going to the **Icon Sets** tab of the **Media Library** Screen.
- *Label* - Choose to label note heads with Note Names, Solfège syllables, or leave them blank.
- *Note Color* - When “Note Head Only” or “Note Head + Icon” is selected for the Icon option, you may choose to display note heads in custom, random, or rainbow colors.
- *Staff Size* - Adjust how large or small the staff is during playback
- *Clef Type* - Choose to display the Treble, Bass, or both Clefs in a specific color
- *Highlight* - Enable “Grey Dim” to show the staff against a grey background, or enable “Active Lines” so Little Musician highlights the line or space where a note appears on the staff
- *Show* - Choose to show rests or the key signature on the staff

Sound Settings

For each display, you can set up to two types of sounds that will be played for that display. For each sound, you can choose from different instruments or voices, and for each of these, you can choose to specify a specific

instrument/voice, or let Little Musician randomly select from an Instrument or Voice Group.



You can manage the instruments and voice sets and groups available in your library by going to the **Voice Sets** and **Instruments** tabs of the **Media Library** Screen.

Clap-Along Display Settings

Once you're done customizing your Clap-Along lesson settings, the next step is to customize the images that get played along with it.

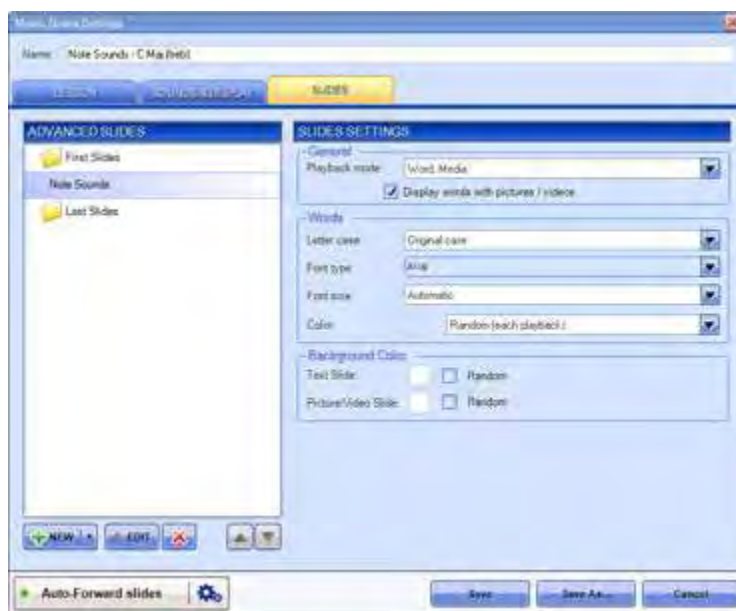


The Clap-Along Display Settings includes the following options:

- *Falling Icon* - Choose a specific shape to represent beats during playback
- *Character* - Choose to show a specific or random animated character to demonstrate clapping during playback.

Customizing Slide Settings

To customize the **Slide** settings for your Music Notes and Clap-Along lessons, go to the **Play & Edit** Screen. Select the lesson you want to edit from the **Lesson Panel** on the left side of the screen then click on the **Settings** button in the right side of the screen.



Slides settings for Music Notes and Clap-Along lessons cover the same type of options.

Advanced Slides

From the **Advanced Slides** panel on the left side of the window, you can create, edit, delete, and rearrange the first and/or last slides in your lesson using the buttons found below the Advanced Slides panel.

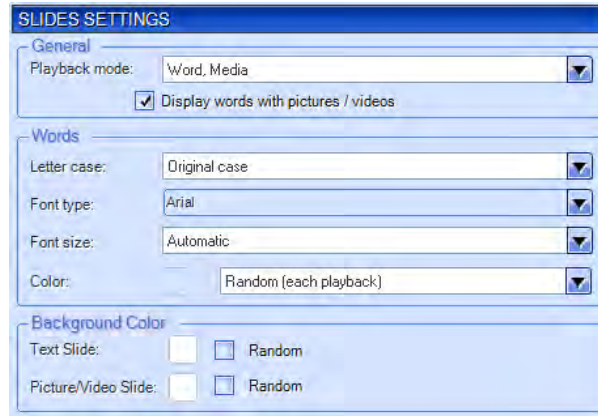


- *Add Slide* - Click on the **New** button to open up the **New Slide** window, where you can add specific content to your new slide.
- *Edit Slide* - To edit a slide, select the slide you want to edit then click on the **Edit** button to open the **Edit Slide** window.
- *Delete Slide* - To delete a slide, select the slide you want to remove and click on the X button.
- *Rearrange Slides* - Change how the slides are arranged by dragging and dropping slides, or by using the **Up/Down Arrow** buttons.

To learn more about the different settings available in the New/Edit Slide window, see “Creating and Editing Words” under the **Customizing Knowledge Lessons** section.

Slides Settings

From the **Slide Settings** panel, you can customize how the words and media files in the slides are shown during playback.



- *Playback Mode* - Change how you want to show the lesson content to your child
- *Letter Case* - Choose how you want the words to be displayed
- *Font Type* - Choose the font type for the words during playback
- *Font Size* - Choose the font size for the words during playback
- *Font Color* - Choose what font color the words are displayed in during playback
- *Background* - Choose the background color for text slides and picture/video slides

Other Playback Settings

Auto-Forward Slides

Enabling the **Auto-Forward slides** setting (green light) allows you to playback presentations continuously, without needing to click a mouse button or press the spacebar to proceed to the next slide.



NOTE: The Auto-Forward setting is only available in Music Notes and Knowledge lessons, including those in Courses. This option is not available in Clap-Along lessons.

Customizing Knowledge Lessons

Options for customizing Knowledge lessons are *only available for licensed Little Reader users*. If you do not own a Little Reader license, Little Musician will only let you play Knowledge Lessons. For more information about Little Reader, visit the [BrillKids website](http://BrillKids.com).



How to Create a Knowledge Lesson

- Go to the **Play & Edit** Screen and choose to display **Knowledge**.
- Click on **New** at the bottom of the **Lesson Panel**.
- Type the name of your new Knowledge lesson, and press **Enter** on your keyboard.

How to Delete a Knowledge Lesson

- Go to the **Play & Edit** Screen and choose to display **Knowledge**.
- Select the Category you want to delete, and click on the **Delete** button at the bottom of the **Lesson Panel**.
- A confirmation box will then pop up asking you to confirm your action - click on **Yes** to delete the lesson, or **No** to cancel.

How to Edit a Knowledge Lesson

- Go to the **Play & Edit** Screen and choose to display **Knowledge**.
- Select the Category you want to edit, and click on the **Edit** button at the bottom of the **Lesson Panel**.
- The **Edit Knowledge Lesson** window will then be displayed as shown below:



Changing the Knowledge Lesson Name

Type in a new name for your Knowledge Lesson inside the Name box, located in the upper right part of the window.

Adding and Removing a Word from a Knowledge Lesson

From the Word Library on the left, click on the **Right Arrow** button or double-click on the word you want to **add** to your lesson. From the Word List on the right, click on the **Left Arrow** button or double-click on the word you want to **remove** from your lesson.

Changing the Default Word Playback Order

Select the word(s) you want to move, then click on the **Top**, **Up**, **Down**, or **Bottom** buttons to rearrange the word(s) included in your Word List.

Once you have finished editing your Knowledge lesson, click on **Save**.

Creating and Editing Words

Create new words to expand your child's Knowledge lesson library, and customize your lessons further by editing words to add your personal media files to make Knowledge lessons even more fun and exciting for your child!

Creating Words

- Go to the **Play & Edit** Screen and choose to display **Knowledge**.
- Select the Knowledge lesson you want to add a new word to.
- Go to your selected Knowledge lesson's **Word Settings Tab**, then click on the **New** button at the bottom of the word list.
- This will pop up the **New Word Window**. The **New Word Window** has four tabs that provide you with the functionality to add in the details for your new word.



- In the **Word Slide** Tab, you can enter your word in the **Word(s)** text box by typing in the word the way you want it to appear during playback. You may also insert “/” marks to divide your new word into syllables or parts (Example: “o/ver/ture”).



- Once you’ve added the necessary media files (i.e., pronunciation recordings, pictures, videos, or music clips / sound effects), click on the **Save** button. If you have not done so already, you will be prompted to enter a filename to save your new word in.

NOTE: Filenames must begin with a letter and may contain numbers (e.g., “composer ” or “composer1”).

Editing Existing Words

- Go to the **Play & Edit** Screen and choose to display **Knowledge**.
- Select the word you want to edit from the different Knowledge Word Lists.
- Click on the **Edit** button below the Word List. The **Edit Word** Window will pop up as shown below:



- Once you're done adding your media files, click on the **Save** button.

Managing Media Files

From the New/Edit Word window, you can add in your own set of recordings, pictures, videos, and music clips!

Adding Pronunciation Recordings

- In the **Pronunciation Audio File(s)** box of the **Word Slide** Tab, click on the **Add** button and locate the pre-recorded audio file in your computer.

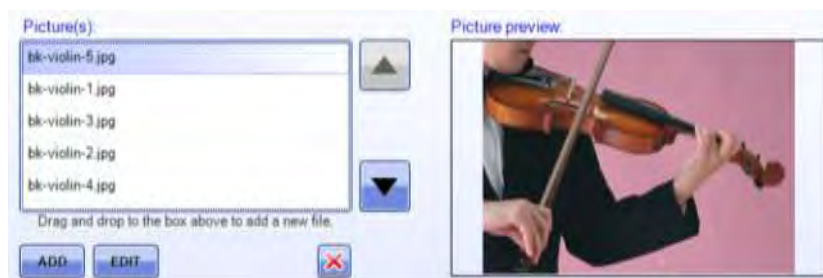


- Click on the **Open** button to add your audio file, or simply drag-and-drop your audio file into the **Pronunciation Audio File(s)** box (you must have the folder containing your file opened already).
- Click on the green Play button beside the audio name to preview your new pronunciation audio.

NOTE: Little Musician supports .mp3, .wav, .wma, and .mid audio file types.

Adding Pictures

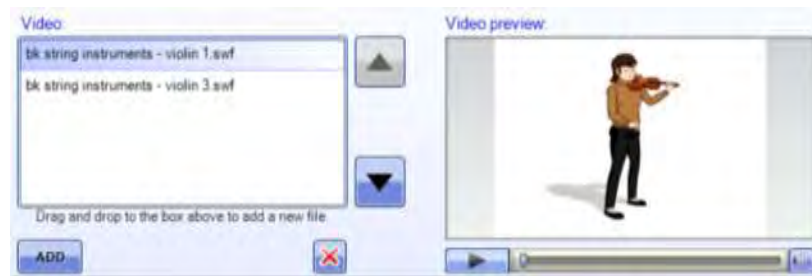
- In the **Picture Slide Tab**, click on the **Add** button under the **Picture(s)** box and locate the photo or image file in your computer.
- Click on the **Open** button to add your image file, or simply drag-and-drop your image file into the **Picture(s)** box (you must have the folder containing your file opened already).



NOTE: Little Musician supports .jpg, .bmp, .gif, and .png image file types.

Adding Videos

- In the **Video Slide** Tab, click on the **Add** button under the **Video** box and locate the video file in your computer.
- Click on the **Open** button to add your video file, or simply drag-and-drop your video file into the **Video** box (you must have the folder containing your file opened already).
- You can preview your video in the **Video Preview** box by clicking on the Play button just below the screen preview.



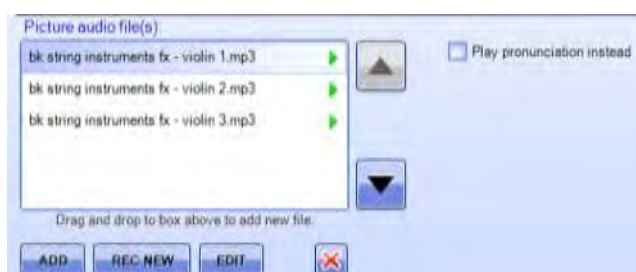
- In the **Audio** section, you can choose which audio file you want to be played together with your video(s) during playback to play along with your video(s) during playback.

NOTE: Little Musician supports .swf, .avi, .mpg, .mpeg, .wmv video file types.

Adding Picture Audio Files (Sound Effects, Music Clips, etc.)

- In the **Picture Audio File(s)** box, click on the **Add** button and locate the audio file in your computer.

- Click on the **Open** button, or simply drag-and-drop your audio file into the **Picture Audio File(s)** box (you must have the folder containing your file opened already).
- If you want the pronunciation to play instead of the picture audio when a picture is flashed during playback, enable the **Play Pronunciation Instead** option.



NOTE: Little Musician supports .mp3, .wav, .wma, and .mid audio file types.

Deleting Media Files

- To delete any media file attached to a word, go to the **Edit Word Window** for the word you want to edit.
- Toggle the **Edit Word Window** tab for the type of media file you want to delete. Select the file you want to remove from the list of media files currently attached to the word, then click on the **Delete** button.

NOTE: Deleting files this way will not remove the files from your computer permanently. If you want to delete unused media files permanently, use the **Purge** function in the **Speed Optimization** section of the **Tools Screen**.

Record your own Pronunciation

Little Musician comes with a built-in audio recording tool which you can use to record your own pronunciations, sound effects, or music clips!

- Before you start, make sure *you already have a working microphone plugged in* to your computer!
- Go to the **Edit Word Window** of the word you want to record your own pronunciation for.
- Click the **Rec New** button found in the **Word Slide Tab** or **Picture Slide Tab** (if you want to record your own picture audio, music or sound effects). This will open the **BrillKids Easy Voice Recorder**.

How to use the BrillKids Easy Voice Recorder

- When you are ready, click the **Rec** button and speak into your microphone. You will notice that the **Rec** button has now changed to a **Stop** button - click on it to stop recording.
- You can now use the **Skip to Start** button (next to the **Rec** button) to rewind, and then click **Play** to playback what you've just recorded.



- The Easy Voice Recorder includes various functions that you can use to edit your recording. Once you're happy with your recording, just click on the **Save** button (or go to the **File** menu and select Save) to save your recording - your file will be saved in an .mp3 format and will automatically be included in the pronunciation or picture audio files for the word you are editing.

Customizing Knowledge Lessons' Playback Settings

Little Musician has built functions which you can use to show your child Word Flash, Picture Flash and Multisensory presentations the way you want them to be played. All you have to do is adjust the settings in your Knowledge lesson's **Playback Settings Panel!**

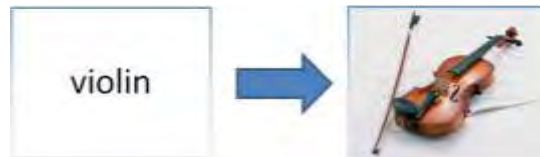


Here are the different settings available in your Knowledge Lessons' **Playback Settings Panel:**

Playback Mode

The **Playback Mode** allows you to change how the lesson content is flashed during playback. Little Musician lets you configure your **Playback Mode** in five different ways:

- *Word, Media* - This displays the word first, then the media files (image, video, and picture audio)



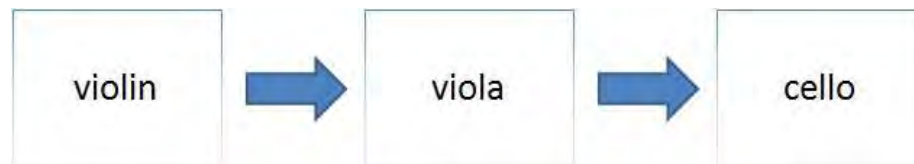
- *Word, Media, Word* - This displays the word first, followed by the media files (image, video, and picture audio), and then the word again



- *Media, Word* - This shows the media files before the word is displayed



- *Word Only (Word Flash Mode)* - This flashes the words one after another



- *Picture Only (Picture Flash Mode)* - This flashes a picture for each word one after another



When **Picture Flash Mode** is selected, you can choose to make Little Musician play pronunciations instead of picture audio (music or sound effects) during playback.

Order

This dictates the order in which the words in your Knowledge lessons will be shown to your child. You may choose from two options:

- *According to List* - Words will be shown according to how the words are arranged in your **Word List**. You may adjust and change the order of the words in the **Word List** of the **Word Settings Panel**.
- *Random* - Words will be shown in no particular order, regardless of how the words are arranged in your **Word List**. This lets you change your child's lessons easily and keep the content varied and exciting.

Words

This group of settings lets you configure how the words are displayed during playback:

- *Letter Case* - Choose how you want the words to be displayed (e.g., lowercase, uppercase, capitalize first letter, or the word's original case)
- *Font Type* - Choose to display words in Arial, Times New Roman, Comic Sans MS, or Tahoma font types, or set Little Musician to use random font types
- *Font Size* - Choose the font size with which to display the words during playback
- *Double Space* - Turning this option on will display two or more words spaced more far apart than how they would normally be, to help your baby focus on each word displayed on screen
- *Display Mode* - Choose to show each word in one font color or in **split mode**, where two font colors are used to emphasize each syllable or part of a word
- *Font Color* - Choose which font color the words are displayed in during playback

Background

Select a background color to stimulate your child's brain during playback. You may specify a color or choose to have the background color change randomly for word slides or picture and video slides.

Subtitles

Choose to turn subtitles on or off to place small subtitles during playback for the Current Slide, and/or a preview of the next Slide that will play. You may also specify the text size of the subtitles during playback.

Current Slide Subtitle - This displays a small box with the word corresponding to the flashed picture in the bottom center of the screen. This way you'll know what word to read aloud to your child.



Next Page Preview - This displays a small box with a preview of the next word at the lower right corner of the screen during your playback. This allows you to know what is coming up ahead of your child (especially useful if you have selected a random order playback), so you can say the word out loud as the next slide flashes.



Other Playback Settings

Number of Pics/Vids Shown - Choose how many images or videos will be shown for each word during playback. Selecting “All” will play back all the pictures or videos that are attached to that word.

This option is particularly useful if you want to emphasize the meaning of the word by showing different images of the same thing.

NOTE: If a particular word does not have that number of images or videos attached to it, the same image(s) or video(s) will be shown repeatedly until it matches the number that you have selected in your playback setting.

Rotate Media - Selecting this option will show the media your child has not seen as often as the others during playback. Each time you play the word back Little Musician will play the next image attached to the word. This can help your baby understand a word better by associating a word with more than one picture.

Pronunciation On - Selecting this option will play the pronunciation file when a word is flashed during playback. Turn this option off if you prefer to personalize the lesson and pronounce the word yourself, instead of playing the default recording.

Pic. Audio On - Selecting this option enables the recorded sound effect, song or vocal audio to be played when an image is flashed during playback.

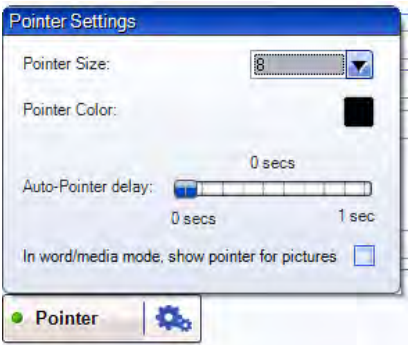
NOTE: If the word does not have picture audio, turning this function on will enable the pronunciation to be played along with the word AND the image.

Video On - Selecting this option will play any videos attached to the word during playback.

Display words with pictures/videos - Selecting this option will display the word on the word slide AND on the picture and video slides. This will reinforce the meaning of the word as your baby will always see the picture or video with the corresponding word.

Allow Override - Selecting this option will allow Little Musician to override the settings in the **Playback Settings Panel**. If the **Override** button in the **Play Panel** is turned on (green light), all the playback settings configured in the **Override Settings** window will be applied during playback (i.e., the individual playback settings set for each Category will not take effect).

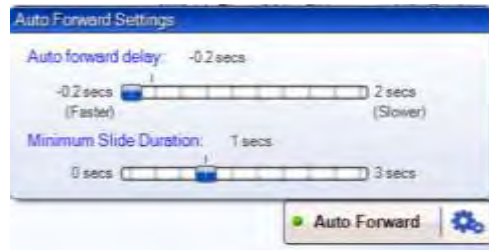
Pointer - Turn this setting on (green light) so that your mouse pointer is shown during playback. You can use your pointer to direct your child's attention throughout the lesson.



You may choose how your pointer looks like and other pointer settings that will take effect during playback by clicking on the **Cog** button beside the **Pointer** button:

- *Pointer size* - There are 5 sizes available for pointers (five being the largest).
- *Pointer Color* - Click on the button to pick a pointer color (the default pointer color is black).
TIP: The bigger the contrast between the pointer and the background color, the more effective it will be in drawing your child's attention!
- *Auto-Pointer Delay* - Enabling the **Auto-Pointer** delay will make the pointer wait a certain amount of time before it moving below the word. You can specify the time the pointer will be delayed by moving the slider to the left or right side of the delay bar.
- *Show pointer for pictures* - When you enable this option, your pointer will remain on the screen even when a picture is flashed during playback. This is useful when you want to draw your child's attention to the main object in the image (e.g., cat).

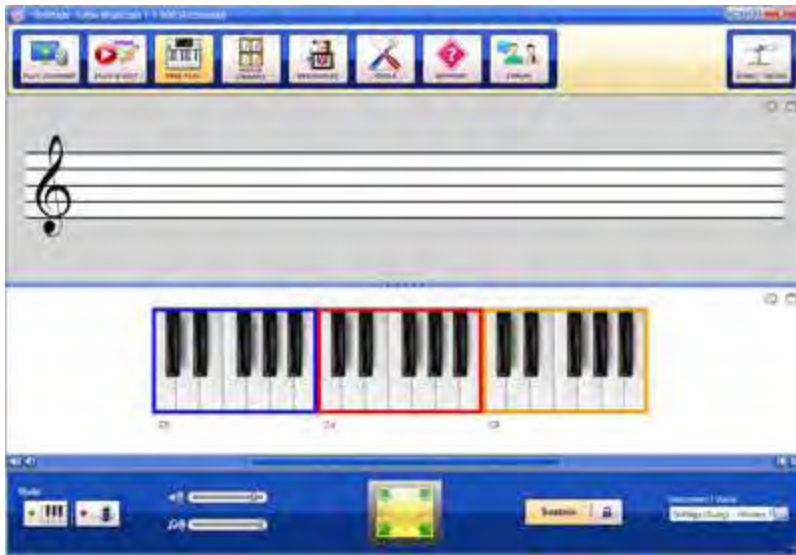
Auto Forward - Enabling the **Auto Forward** setting (green light) allows you to playback presentations continuously, without needing to click a mouse button or press the spacebar to proceed to the next slide.



To adjust the **Auto Forward** settings, click on the **Cog** button next to the **Auto Forward** button. This will pop up a small window where you can set the speed of continuous playback minimum slide duration by adjusting the **Auto Forward Delay** bar.

The Free Play Screen

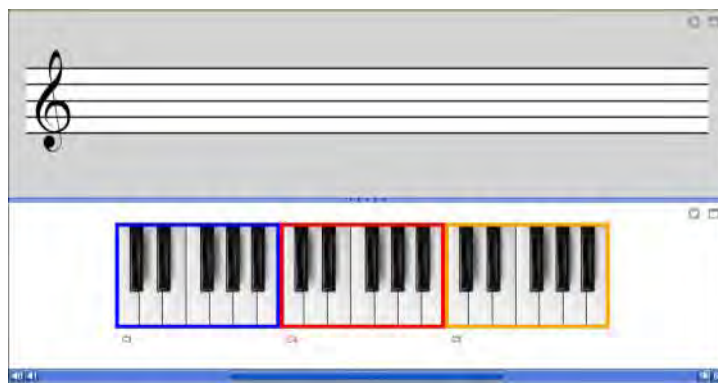
In *Little Musician*, your child can play on a musical keyboard anytime she wants by going to the **Free Play** Screen, which you can even customize to make keyboard-playing even more exciting!



The Free Play Screen is divided into two panels - the **Staff & Keyboard Panel** and the **Settings Panel**.

Staff & Keyboard Panel

Play anything on the **Keyboard Display** and the notes you play will automatically get displayed on the **Staff** above the keyboard! You can use your **mouse** or to click on the keys, or press the keys on your **computer keyboard** to play the corresponding key on the **Keyboard Display**.



The scrollbar below the Keyboard Display lets you to move through the different octaves on the keyboard. You can also specify how far you scroll through the keyboard by clicking on “1” on either side of the scrollbar, to move by one key, or by clicking on “8” on either side of the scrollbar, to move by one octave.

Alternatively, you can use your mouse to click on any line or space in the **Staff**, and the corresponding note will get played on the keyboard

Settings Panel

Instead of the **Play Panel** you see in the **Play Courses** and **Play & Edit** Screens, the **Free Play** Screen has a **Settings Panel** at the bottom which has the following settings:



Mode

This lets you toggle the **Keyboard** or **Chord Training** mode of the **Free Play** Screen. The **Chord Trainer** lets your child play out the chords of C, F, and G in 3 different inversions each (9 chords in total), using both an instrument sound, as well as a sung recording of Solfège syllables.

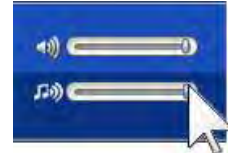


Volume Settings

Voice Volume - This lets you control the loudness or softness of all voice pronunciations or sung recordings.



Music Volume - This lets you control the loudness or softness of all instrument sounds.



NOTE: You can further increase or decrease volume through your computer and speaker volume controls.

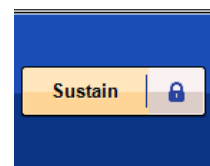
Full Screen Mode

You can expand the Staff & Keyboard Panel so that it occupies the whole screen by clicking on the yellow button in the middle of the **Settings Panel**.



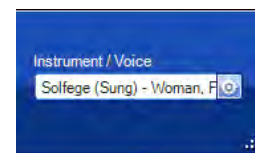
Sustain

Enabling this setting will increase the length of time during which the sound of a note remains before it becomes silent.



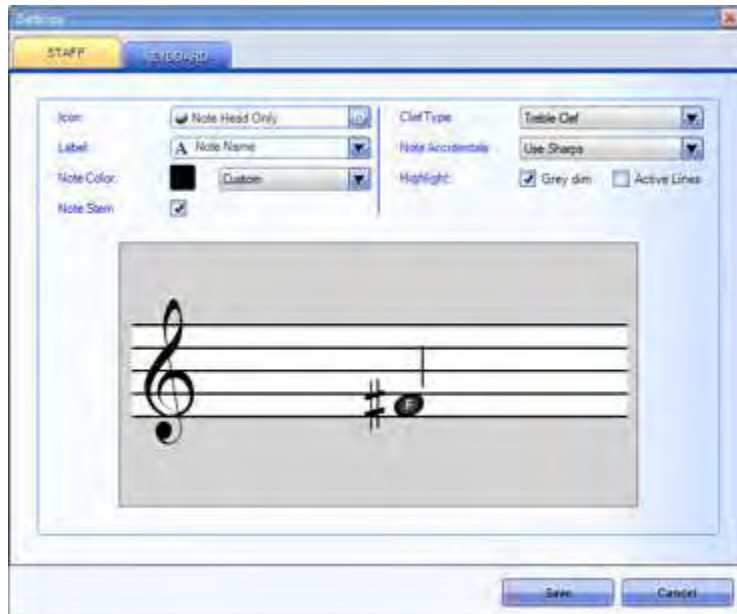
Instrument/Voice

Change how the notes or keyboard keys sound by selecting a voice or sound from the **Instrument/Voice** dropdown list.



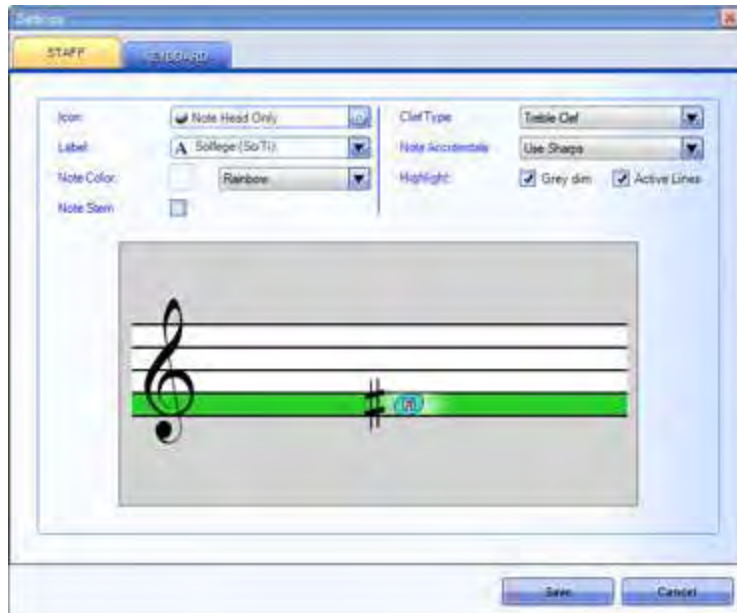
Customizing Staff & Keyboard Display Settings

You can customize the **Staff & Keyboard Display** by toggling the **Settings** window - click on the **Settings (Cog)** button on the upper right part of the Staff or Keyboard Display panel to open the corresponding Settings window.



Staff Settings

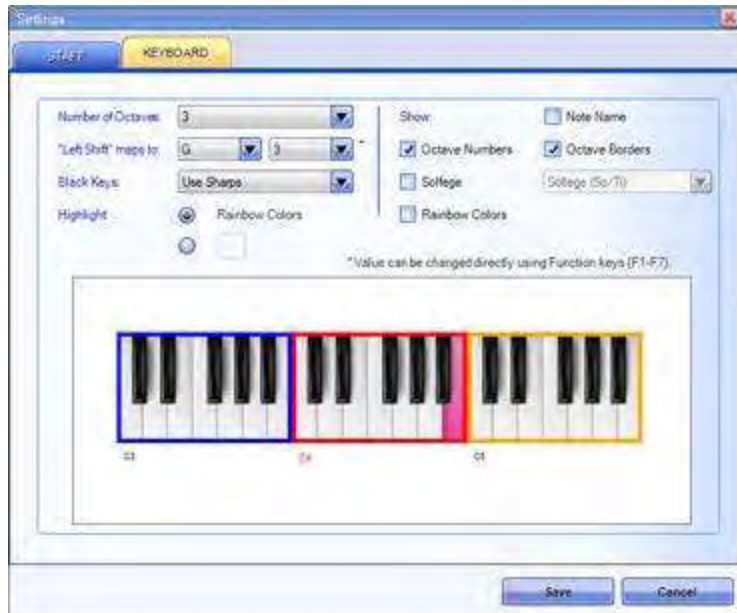
Change how the Staff and notes appear in the Free Play Screen:



- *Icon* - Change the icon used to represent notes on the Staff.
- *Label* - Change the note labels to **Note Names**, **Solfège** syllables, or to leave notes unlabelled.
- *Note Color* - Change the note icon color.
- *Note Stem* - Show or hide the note stem.
- *Clef Type* - Toggle the **Treble Clef** or **Bass Clef**, or choose to show both.
- *Note Accidentals* - Choose to use **Sharps** or **Flats** to either raise or lower the pitch of the note by a semitone.
- *Highlight* - Choose to highlight the Staff by filling in the background color (Grey Dim) or choose to highlight the line or space where the note sits on the Staff (Active Lines).

Keyboard Settings

Change how the Keyboard Display appears in the Free Play Screen:

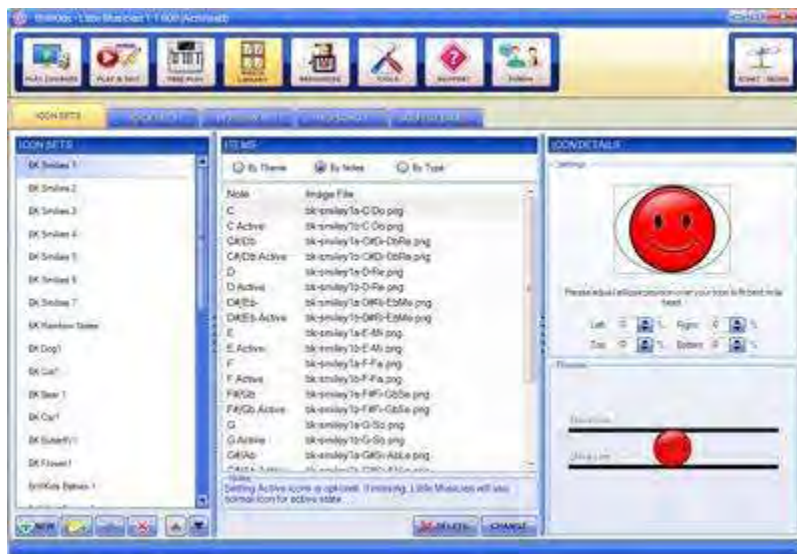


- *Number of Octave* - Change the number of octave shown on the keyboard.
- **Left Shift* maps to* - Select the note that will be played when pressing the **Left Shift** key on your computer keyboard. In turn, this will change the note assigned to each key on the computer keyboard. By default, the **Left Shift** key maps to "G3" and Z maps to "A3", etc.
- *Black Keys* - Choose to use **Sharps** or **Flats** to either raise or lower the pitch of the note by a semitone.
- *Highlight* - Highlights the key you play or press.
- *Show* - Choose to display **Note Names**, **Octave Numbers**, **Octave Borders**, or **Solfège Syllables** on the Keyboard Display. Here you can also choose to show **Rainbow Colors** for each key in the Keyboard Display.

In case you want the Staff or Keyboard Display to occupy the whole Free Play screen (instead of having them on split panels), just click on the **Window** button beside the **Setting (Cog)** to expand the Staff or Keyboard Display.

The Media Library Screen

You can edit and create Icon and Voice sets, Instruments, Midi Songs, and Solfège Labels to personalize your baby's music lessons! Armed with your creativity, you can virtually create an unlimited number of media sets for your baby via the **Media Library** Screen.

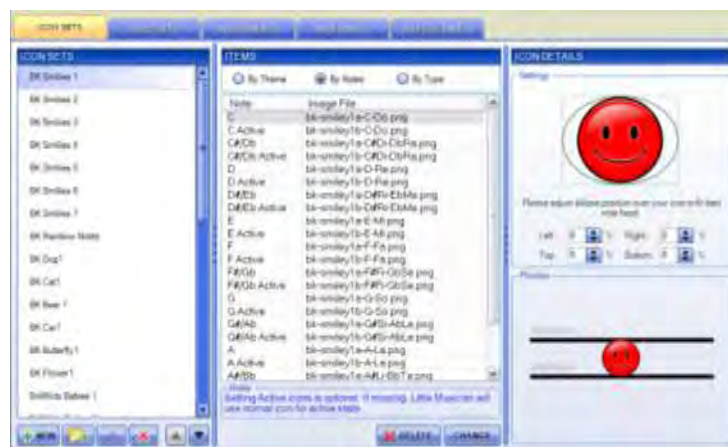


To toggle between Icon and Voice sets, Instruments, Midi Songs, and Solfège Labels, simply click on the respective tab at the top of the **Media Library** Screen. You will notice that the left hand panel contains a list of available Icon

and Voice sets, Instruments, Midi Songs, and Solfège Labels while the right hand panel shows a preview of the selected media set.

The Icon Set Tab

The Icon Set Tab consists of three panels: the Icon Set Panel, the Items Panel, and the Icon Details Panel.



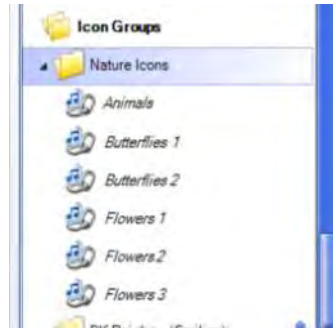
The Icon Set Tab shows you all the Icon Sets that are currently available in your Little Musician library. Each Icon Set contains icon images that are displayed instead of regular note heads during playback.

Icon Set Panel

Located at the left side of the Icon Set Tab is the Icon Set Panel, where you can create and edit Icon Sets. Simply click on the corresponding button at the bottom part of the panel to make your selection.

- **New** - Create a new Icon Set by clicking on the **New** button.

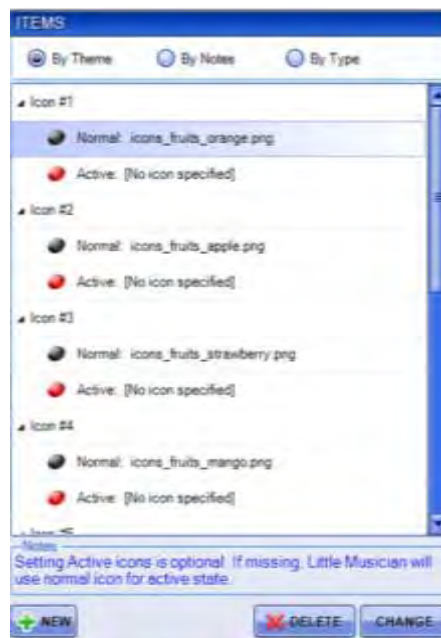
- *New Icon Group* - An **Icon Group** is a collection of different Icon Sets which has a specific playback setting. Icon Sets included in an Icon Group can be played randomly for each slide OR for each playback. In effect, using Icon Groups lets you randomize the icons shown during lesson playback instantly!



- To add existing Icon Sets to your new Icon Group, just select the Icon Sets you want from the list of Icon Sets and drag it towards your new Icon Group folder. You'll notice that the names of Icon Sets included in Icon Groups are displayed in italicized font.
- *Rename* - Select an Icon Set and click on this button to change the Icon Set's name.
 - *Delete* - Select an Icon Set or Icon Group and click on this button to remove it from your icon library.
 - *Move (Up and Down)* - Select an Icon Set or Icon Group and click on the **Up/Down** buttons to move it up or down the list.

Items Panel

In the middle of the **Icon Set Tab** is the **Items Panel**, which lets you create, delete, or change an icon. Simply click on the corresponding button at the bottom part of the panel to make your selection. You can also preview your icons by **Theme**, **Notes**, and **Type** by making your selection at the top of the **Items Panel**.



- **New** - Select the Icon Set that you want to add a new icon to and click on the **New** button. This will create an icon in the selected Icon Set.
- **Delete** - Select an icon and click on this button to remove it from your icon library.
- **Change** - You can change the image file used for an existing icon by selecting a specific icon that you want to change and clicking on the **CHANGE** button. This will open an explorer window where you can locate the image file you want to use instead of the current one.

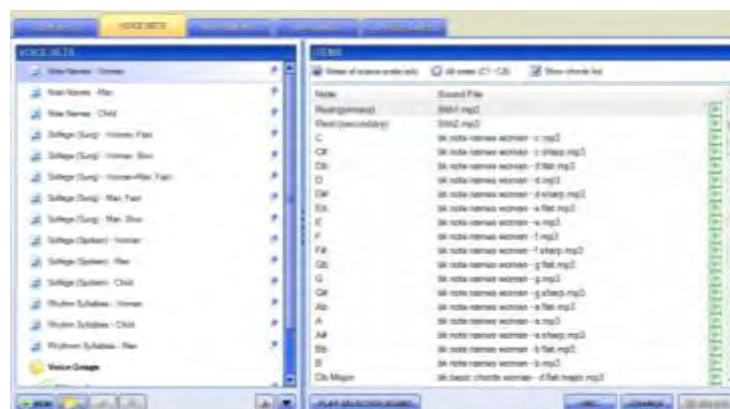
Icon Details Panel

At the right side of the **Icon Set Tab** is the **Icon Details Panel** where you can preview your selected icon and adjust the ellipse position over it.



The Voice Set Tab

The **Voice Set** Tab shows you all the Voice Sets that are currently available in your Little Musician library. Each Voice Set contains pronunciation or sung recordings that are played when notes are displayed during playback.



- *New* - Create a new Voice Set by clicking on this button. Type in the name of your new Voice Set and press **Enter** on your keyboard.
- *New Voice Group* - A **Voice Group** is a collection of different Voice Sets which has a specific playback setting. Voice Sets included in a Voice Group can be played randomly for each slide OR for each playback.



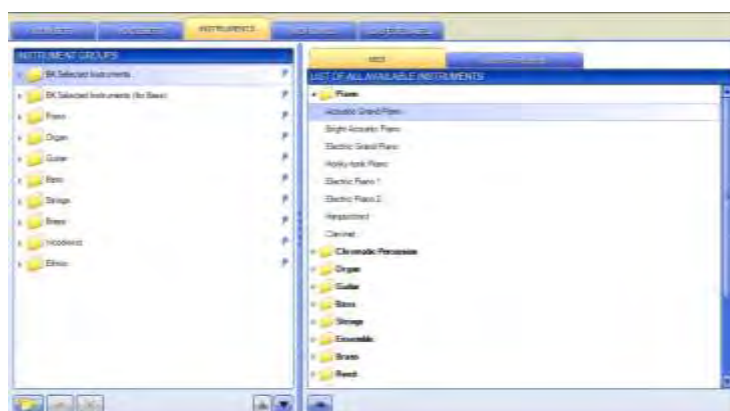
To add existing Voice Sets to your new Voice Group, just select the Voice Sets you want from the list of Voice Sets and drag it towards your new Voice Group folder. You'll notice that the names of Voice Sets included in Voice Groups are displayed in italicized font.

- *Rename* - Select a Voice Set and click on this button to change the Voice Set's name.
- *Delete* - Select a Voice Set and click on this button to remove it from your sound library.
- *Move (Up and Down)* - Select a Voice Set or Voice Group and click on the **Up/Down** buttons to move it up or down the list.
- *Play Selected Sound* - Select an item from the right-hand panel and click on **PLAY SELECTED SOUND** to preview the sound file for that item. Alternatively you can click on the small play button beside the sound file name to preview it.

- *Rec* - You can record a new set of sound by clicking on this button, which will open up the **Easy Voice Recorder**.
- *Change* - You can change the sound file used for an item by selecting a specific item from the right hand panel and clicking on the **CHANGE** button. This will open an explorer window where you can locate the sound file you want to use instead of the current one. Alternatively you can double-click on the sound file you want to change to open the explorer window.
- *Delete* - Select an item from the right hand panel and click on this button to remove it from your sound library.

The Instruments Tab

The **Instruments** Tab shows you all the Instruments that are currently available in your Little Musician library. These instrument sounds are played when notes are displayed during playback (when you choose to use instrument sounds instead of recordings for note names or Solfège syllables).



- *New Instruments Group* - An **Instruments Group** is a collection of different Instruments which have a specific playback setting. Instruments included in an Instrument Group can be played randomly for each slide OR for each playback.

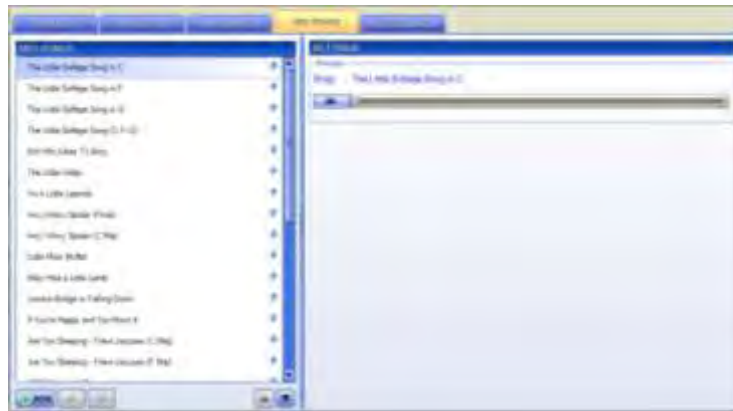


To add existing Instruments to your new Instrument Group, just select the Instruments you want from the list of Instruments and drag it towards your new Instrument Group folder. You'll notice that the names of Instruments included in Instrument Groups are displayed in italicized font.

- *Rename* - Select an Instrument Set and click on this button to change the Instrument's name.
- *Delete* - Select an Instrument and click on this button to remove it from your instrument library.
- *Move (Up and Down)* - Select an Instrument or Instrument Group and click on the **Up/Down** buttons to move it up or down the list.
- *Add* - On the right hand panel is a list of all available instruments that can be added to your Instrument Groups. To add an Instrument to your Instrument Group, select the Instrument you want from the right hand panel and click on the **Add** button at the bottom of the panel.

The Midi Songs Tab

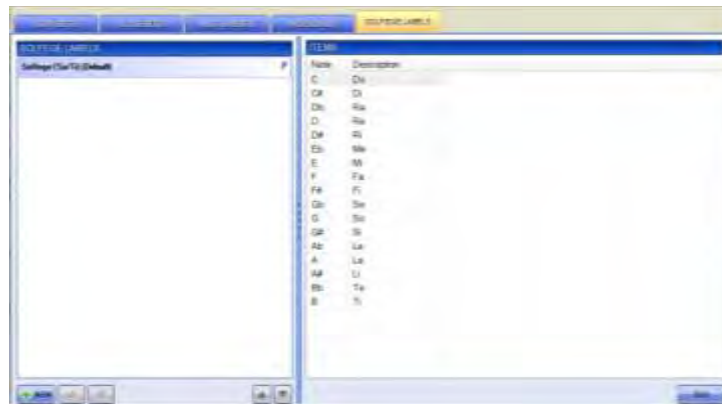
The **Midi Songs** Tab shows a list of Midi Songs currently available in your Little Musician library. This is where you'll find the songs your child hears during Clap-Along lessons.



- **New** - Add a new Midi Song by clicking on this button. This will open up an explorer window where you can locate the Midi Song file you want to add to your Little Musician library.
- **Rename** - Select a Midi Song and click on this button to change the Midi Song's name.
- **Delete** - Select a Midi Song and click on this button to remove it from your sound library.
- **Move (Up and Down)** - Select a Midi Song and click on the **Up/Down** buttons to move it up or down the list.
- **Play** - You can preview a Midi Song by clicking on the **Play** button at the right hand panel.

The Solfège Labels Tab

The **Solfège Labels** Tab shows a list of Solfège Labels that are currently available in your library. These Solfège Labels appear inside note heads or on the keyboard keys when you choose to label note heads or keys with Solfège syllables.



- **New** - Add a new Solfège Label by clicking on this button. Type in the name of your new Solfège Label and press **Enter** on your keyboard.
- **Rename** - Select a Solfège Label and click on this button to change the Solfège Label's name.
- **Delete** - Select a Solfège Label and click on this button to remove it from your library.
- **Move (Up and Down)** - Select a Solfège Label and click on the **Up/Down** buttons to move it up or down the list.
- **Edit** - You can change the description attached to a note by selecting a specific item from the right hand panel and clicking on the **Edit** button.

Type in the descriptions of the selected note and press **Enter** on your keyboard.

The Resources Screen

We know how much variety can help young children learn and understand many things faster and more efficiently, and so Little Musician comes with a comprehensive **Resources** Screen where we've gathered several YouTube videos and additional downloads to supplement your daily lessons!

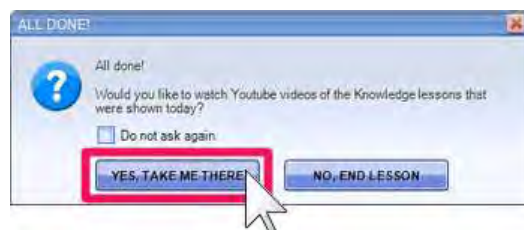


The **Resources** Screen contains lots of embedded videos and downloadable content, so *make sure that you're connected to the Internet* to be able to access all its features!

NOTE: In case you find any video that's broken or isn't playing at all, let us know by filling out the **Report Broken YouTube Link** form.

Daily Lessons

This video library corresponds to the lessons from your Little Musician Curriculum. At the end of the day's lesson, you'll be asked if you want to watch videos of the day's Music Knowledge or Music Appreciation lessons - click on **Yes, Take Me There** to jump directly to the **Resources Screen's Daily Lesson** page for the day you're in!

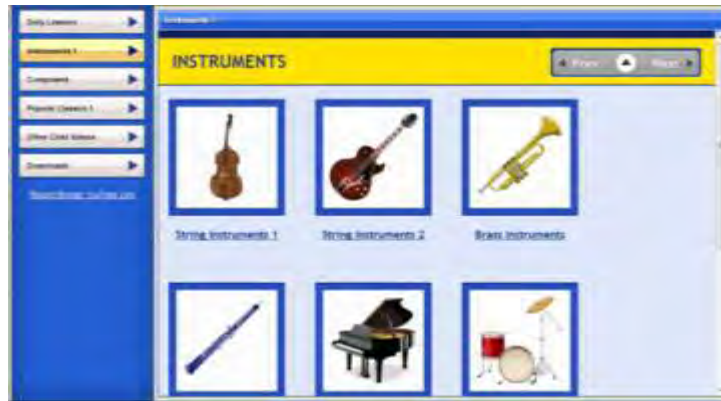


Alternatively, just pick the Course you're in and the Day you want to view from the Day Navigation Bar and watch videos of the full music piece or an actual performance featuring from the day's set of Music Knowledge or Music Appreciation lessons!



Instruments

This is video library of all instruments included in your Knowledge lessons, organized by instrument type. Just pick an Instrument category, select the instrument you want to watch videos of, and enjoy the show!



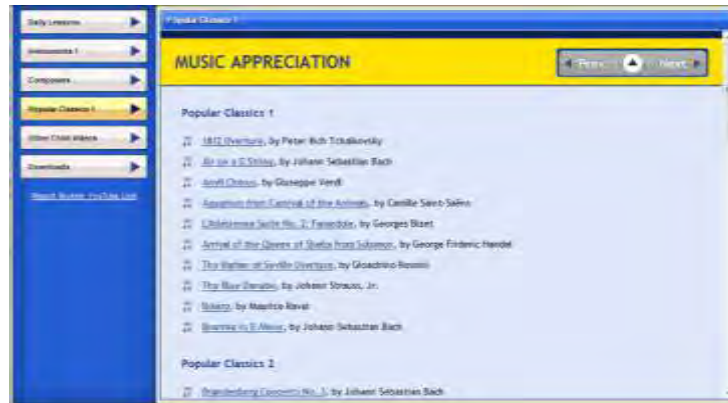
Composers

This video library features well-loved pieces from all the Composers included in your Knowledge lessons, organized by Composer. Just pick a Composer category, select the composer whose works you want to watch videos of, and enjoy the show!



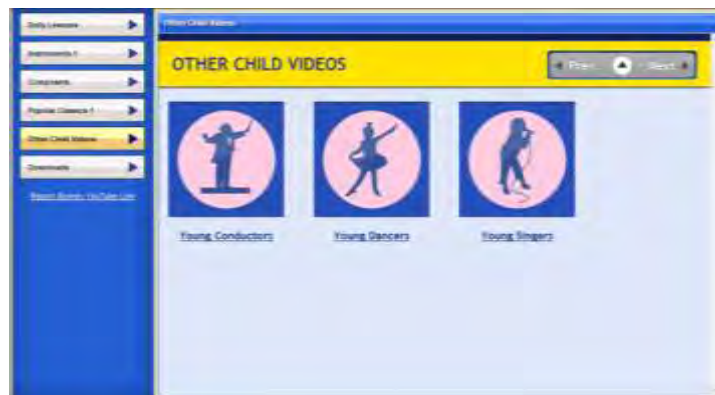
Popular Classics

This video library features actual performance clips for all the pieces included in your Music Appreciation lessons, organized by Popular Classics lesson groupings. Just pick a piece you want to watch videos of, and enjoy the show!



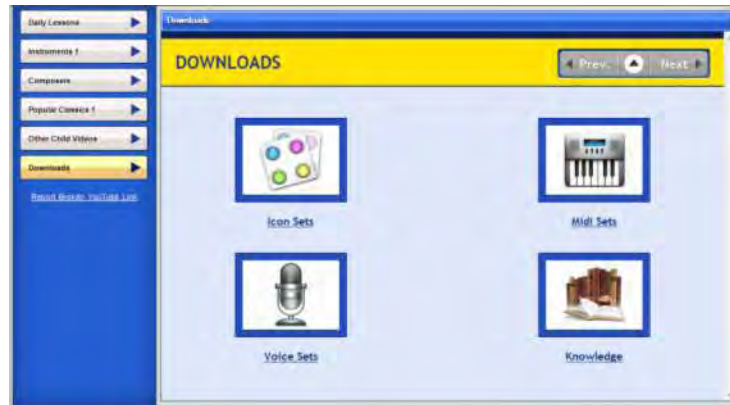
Other Child Videos

Here you can watch some fun videos featuring young composers, dancers, and singers. Just pick a video you want to watch and enjoy the show!



Downloads

Want more media sets for your Little Musician lessons? Just download more icon sets, midi sets, voice sets, or knowledge lessons from the **Resources Screen's Downloads** section!



The Tools Screen

The **Tools** Screen is where you'll find several functions for managing your Little Musician files as well as maintaining your Little Musician software.



Software Information

The **Software Information** section of the **Tools** Screen makes it easy for you to manage and access your Little Musician software, content, and license key.



Check which version of Little Musician you are currently using by referring to the version number written at the top part of the **Software Information** section. You will also see a list of Little Musician curricula that you've imported into your learning system.

Below the **Software Information** section is the **BrillKids Account** section, where you can sign in to your BrillKids Account to access your Little Musician software, content, and license key files directly from the Little Musician window. From here you may also manage your license activation records.

The Easy Voice Recorder

The **Easy Voice Recorder** is a built-in recording tool that you can use to record and edit sound files for your Little Musician lessons. Simple, intuitive, and

completely integrated with Little Musician, this program handles all of your recording needs and comes with lots of powerful tools to edit your recordings. Launch the Easy Voice Recorder by going to your Little Musician’s Tools Screen, or via the shortcut in your Little Musician Start menu folder.

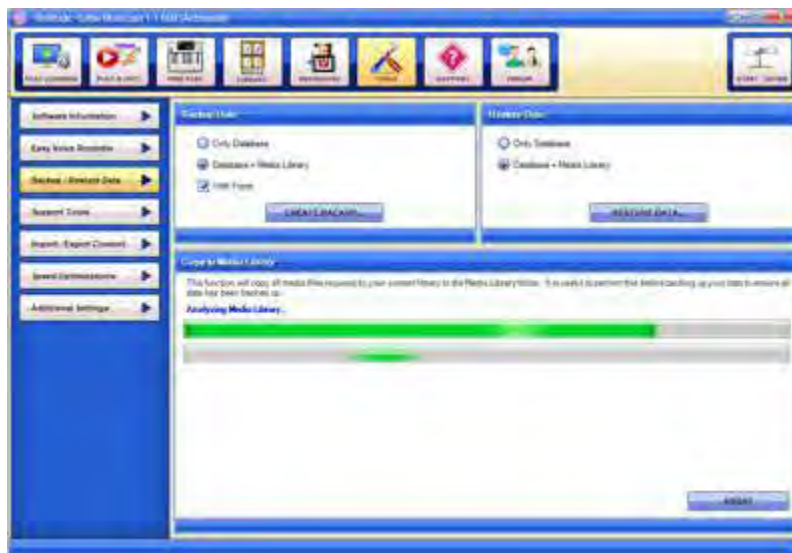


Backup/Restore Data

Use the **Backup/Restore Data** function to create a backup of all your Little Musician data, such as your database, media library and any custom fonts used in your lessons, so that you can restore Little Musician to a “fixed” state should you run into any major problems later on.

The Backup function will back up data regarding all lessons currently imported in your Little Musician - if you want to back up other lessons that you haven’t imported yet, make sure you import these first before proceeding with creating a backup file.

Once you have a backup file, you can then easily restore your Little Musician data whenever you need to revert to your original data.



Copy to Media Library

When you create your own lessons and add your own media files, sometimes your media files may not get saved into your Little Musician Media Library automatically. The **Copy to Media Library** function will copy any missing media files that you've previously attached to your lessons into your Media Library, thus ensuring that when you back up your media library, all the necessary files would be included.



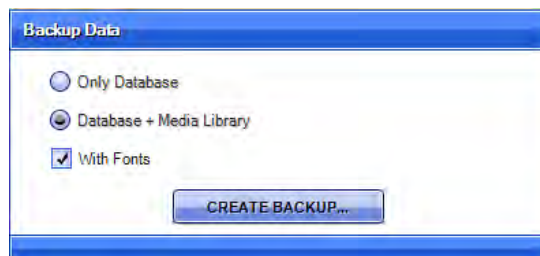
To copy media files required by Little Musician into your Little Musician Media Library:

- Once you go to the **Backup/Restore Data** section, Little Musician will automatically run a scan for any stray media files that haven't been copied to your Media Library. You can manually run another scan by clicking on the **Scan Again** button.
- Select the media files you wish to copy to your Little Musician Media Library and click on the **Copy** button.

How to Save a Backup of Your Little Musician Data

Select what you want to backup:

- Select **Only Database** to back up your lessons only without any media (i.e., no media will be attached).
- Select **Database + Media Library** to back up your lessons and all the media files attached to them.
- Select **With Fonts** if you want to back up your fonts, especially if you used custom fonts in any of your lessons.



Click on **Create Backup**. Type in a filename for your backup file and choose where you want to save it on your computer, then click on **Save**. Once the backup process is done, you will have a new file with an *.lmsb file extension.

NOTE: This process may take a while depending on how much information needs to be backed up.

How to Restore Data from Your Little Musician Backup File

Select what you want to restore:

- Restore **Only Database** if you want to restore your lessons only without any media (i.e., no media will be attached).
- Restore **Database + Media Library** if you want to restore your lessons and all the media files attached to them.



Click on **Restore Data** and locate your backup file, and click on **Open** to start restoring your backup data.

A message will appear warning that restoring will replace the existing database and/or media library and fonts in your Little Musician - select **Yes** to proceed.

Restoring may take a while depending on the file size.

NOTE: The backup file will overwrite **ALL** existing data in your Little Musician, replacing your database and your media library (only if your backup file includes your media library data).

Support Tools

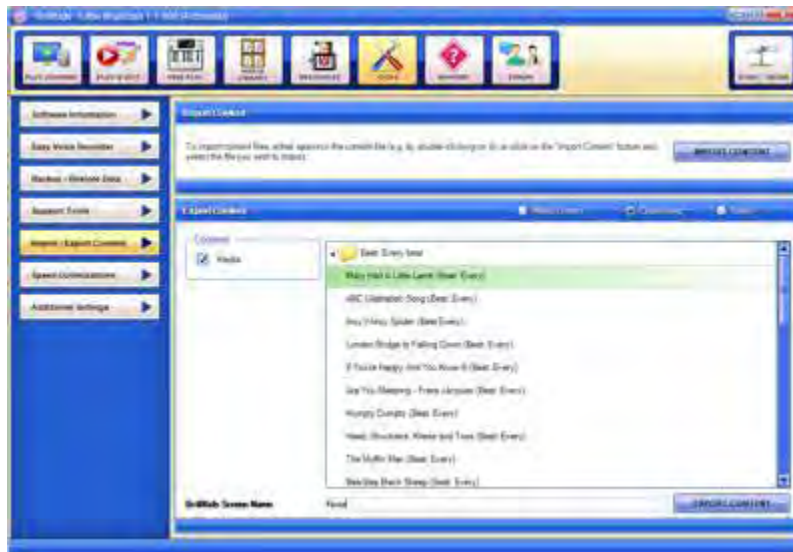
The **Support Tools** window contains some fantastic functions designed to solve the most common playback problems. Through the **Support Tools** window, you can also create a Diagnostic Report that you can send to BrillKids Support for further assistance. For more details about the **Support Tools** window, proceed to the [Getting More Help with Little Musician](#) section.



Import/Export Content

Little Musician allows you to share your Music Notes and Clap-Along lessons with other parents and children with an easy-to-use Import and Export function!

Click on the **Tools** button and then click on the **Import/Export Content** button as shown below.



How to Import Little Musician Files

Importing files mean that you have already downloaded Courses, Music Notes, Clap-Along or Knowledge Lessons, or other media sets, and these are saved in your computer's hard drive. The next thing you need to do is import these files into your Little Musician, so they can be ready for use!

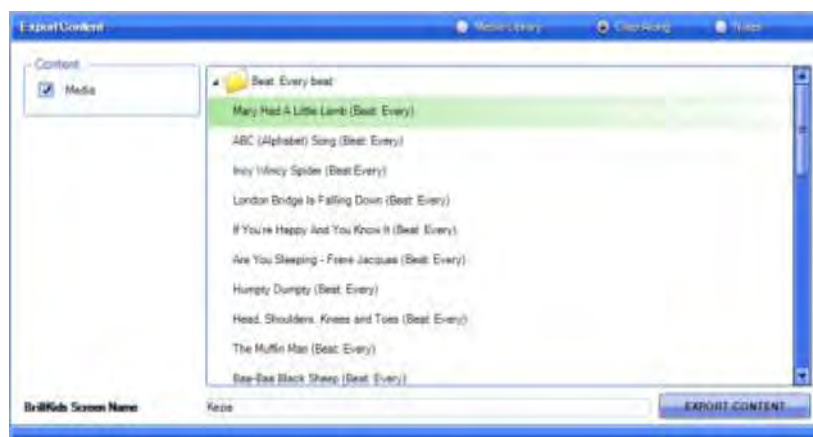


- Go to the **Import/Export Content** section.

- In the **Import Content** panel (top part of the **Import/Export Content** Screen), click on the **Import Content** button and locate the file on your computer.
- Click on the **Open** button. A confirmation will appear once the file has finished importing.

How to Export Little Musician Files

Exporting files mean that you would like to save a copy of your library so you can share it with other people, or to save it as a backup for future use. This doesn't mean that you are deleting the lists from your Little Musician program entirely; rather you are just making a copy of your lists, to be saved in your computer.



- Go to the **Import/Export Content** section.
- In the **Export Content** panel, select **Clap-Along** or **Notes**.
- Select the files you want to export, or select multiple items by holding down your **Ctrl** key.

- In the **Content** panel (located on the left of the **Clap-Along/Notes** list), choose whether you would like to export the corresponding media files.
- Click on the **Export Content** button, and you will be shown a list of the items you have selected. Click **Yes** to proceed or click **No** if you want to make changes.
- Type in a filename and choose where to save the file, then click on **Save**.

How to Export Different Media Sets in Little Musician

Export some of your Little Musician media sets so you can share your files with other parents who use Little Musician or to save a personal backup of each set!



- Go to the **Media Library** Screen at the top of the Little Musician window.
- Select which Little Musician media set you want to export by toggling between the **Icons**, **Voice Sets**, **Instruments**, **Midi Songs**, and **Solfège Labels** tabs.
- Select the media set that you want to export, or select several media sets by pressing **Ctrl** or **Shift** on your keyboard.
- Right-click on your selection and choose **Export Media** from the context menu. A confirmation window will pop up, showing you the items that you've selected. Click **Yes** to export your media set(s) or click **No** to cancel and make further changes.

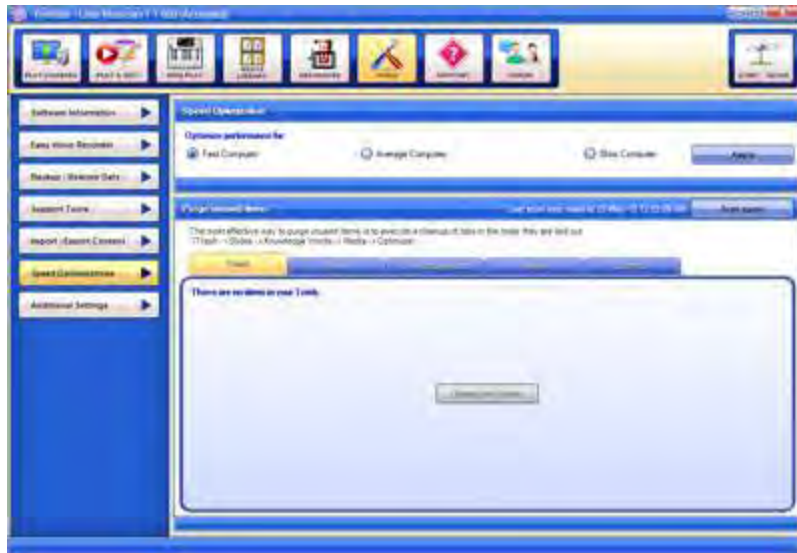
- Type in a filename for your file, and choose where you would like the file to be saved in your computer. Click on **Save**.
- Once you have exported some of your Little Musician files, you may begin sharing these with other Little Musician users by emailing them, uploading them to the BrillKids Forum, or burning them to data CDs!

About the BrillKids Screen Name Feature

Type in your BrillKids Forum username in the **BrillKids Screen Name** box (located at the bottom of the **Import/Export Content** Screen) - this will tag your Little Musician files with your BrillKids Forum username so that when you export files to share with others, people will know you created those files.

Speed Optimizations

Optimize Little Musician to maximize your computer's processing power, and choose to clean up your Little Musician Media Library so you can free up space in your computer.



Speed Optimization

You can adjust the performance of Little Musician for **Slow** computers by disabling most visual aspects in Little Musician, which in turn will make Little Musician run significantly faster and more smoothly. Otherwise, you may choose to optimize Little Musician for **Average** or **Fast** computers.



Purge Unused Items

While you're using Little Musician, it's not unusual for left-over files to remain whenever you import, remove, or create your own lessons, cluttering up your Media Library. The **Purge Unused Items** function removes any media files found in your Media Library that are no longer in use by Little Musician, freeing up lots of space in your computer.



As soon as you go to the **Speed Optimizations** section of the **Tools** Screen, Little Musician will automatically run a scan and list down any unused media files in your Media Library. You may repeat the scan by clicking on the **Scan Again** button, or proceed to deleting your unused media files by clicking on the **Delete** button.

Additional Settings

Want to change the interface language of your Little Musician software? Perhaps you'd like to see the pop-up alerts or messages you once chose to disable?

Visit the **Additional Settings** section of the **Tools** Screen, where you can change the interface language your Little Musician software, choose to reset all “Never show again” options, and enable or disable the software’s start-up melody.



NOTE: When changing the interface language, you need to restart Little Musician in order for the language change to take effect.

The Forum Screen

Find out what BrillKids has in store for you and your child!

With an Internet connection, you can easily access the **BrillKids Forum**, where you can read news on the latest updates, software and early learning developments right from your Little Musician program!

- Learn more about new BrillKids programs focusing on different learning areas - reading, music, math, and much more!
- Subscribe to newsletters with relevant breakthroughs concerning research and studies on early learning!
- Join beta testing for new and upcoming programs!
- Meet and greet fellow parents around the world and share word lists, swap teaching techniques, and ask for teaching or even parenting tips!
- Browse and download free content!
- Upload your own Little Musician files to the Forum Library!



Using Little Musician with Different Languages

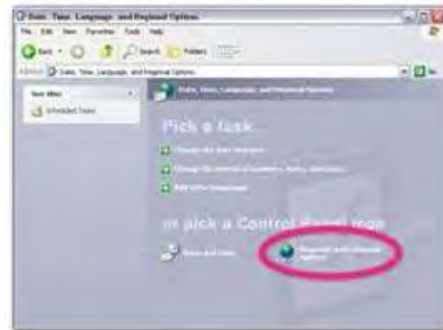
Teaching your child a foreign language is easy! Little Musician supports foreign languages that use the standard Roman alphabet and other characters (provided you have installed the additional language packs in your computer), so you can create and edit words and use other languages to teach your baby.

If you have not installed the additional language packs yet, follow the directions below to unlock full language support for your Little Musician.

In your computer, click on **Start** and open the **Control Panel**. Note that some menu items that will be mentioned in the next steps may not have the same name, depending on your computer's operating system:

Instructions for Windows XP

In your Control Panel (Category View), click on Date, Time, Language, and Regional Options and then click on Regional and Language Options.



This will open a pop-up window as shown below. Go to the **Languages** tab.



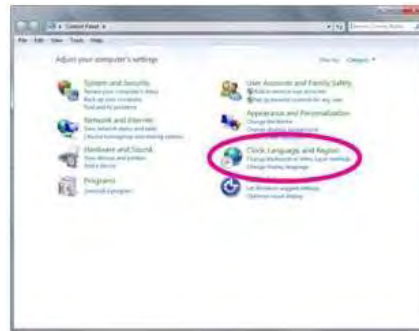
In the **Supplemental Language Support** area, tick on the boxes to install additional languages of your choice. Click **OK**, and follow the prompts.



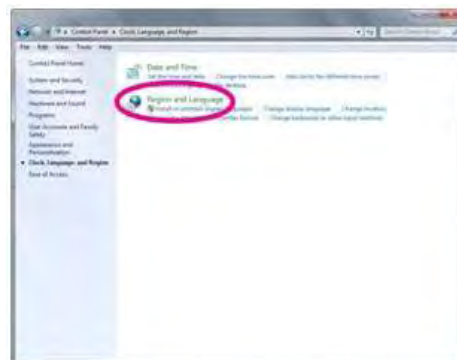
You may be prompted to restart your computer for the changes to take effect.

Instructions for Windows Vista and Windows 7

In your Control Panel (View by Category), click on Clock, Language, and Region and then click on Regional and Language Options.



This will open a pop-up window as shown below. Go to the **Keyboards and Languages** tab and click on **Change Keyboards**.



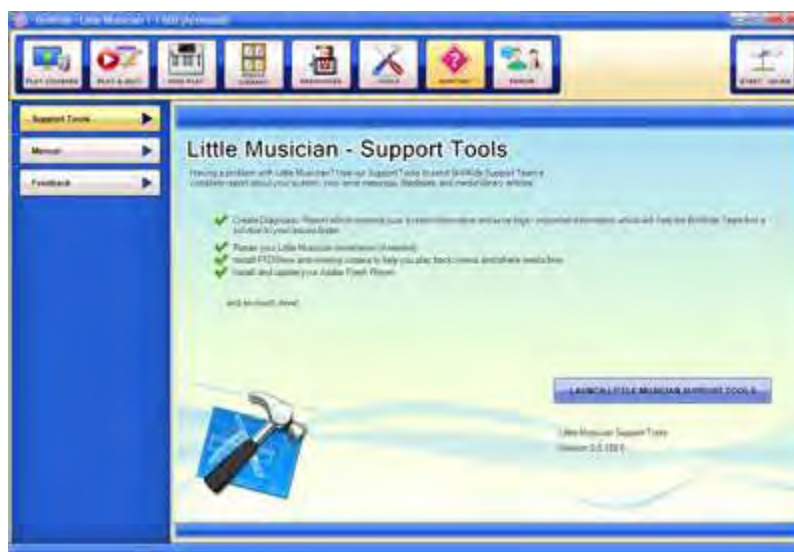
Click on **Add** in the **Text Services and Input Languages** pop-up window to install additional languages of your choice.



You may be prompted to restart your computer for the changes to take effect.

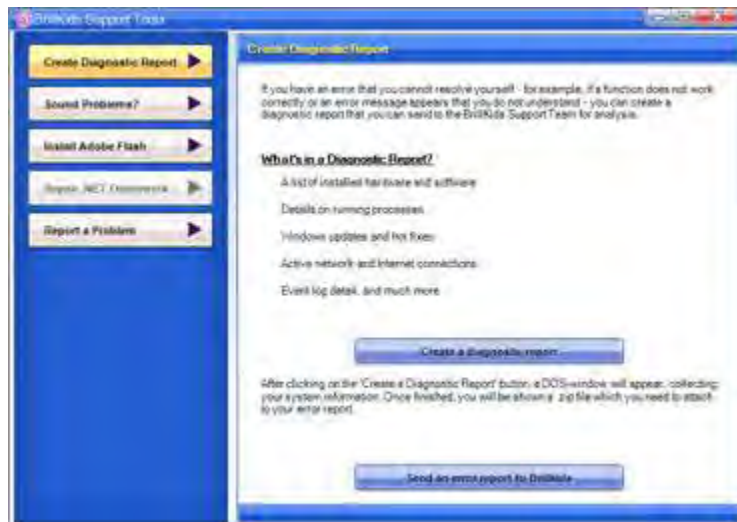
Getting More Help with Little Musician

The **Support** Screen is your first stop whenever you need help with using your Little Musician or if you need a quick fix for any problem you encounter while using the software. Since it comes built into Little Musician, you don't have to skim through several pages before finding the help you need!



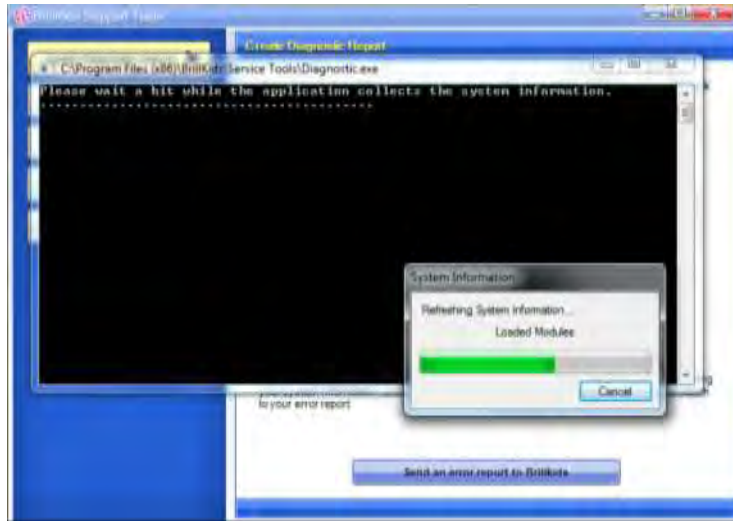
Support Tools

The **Support Tools** window lets you fix common playback problems instantly - and in case you need further help, contacting BrillKids Support is just a few clicks away!



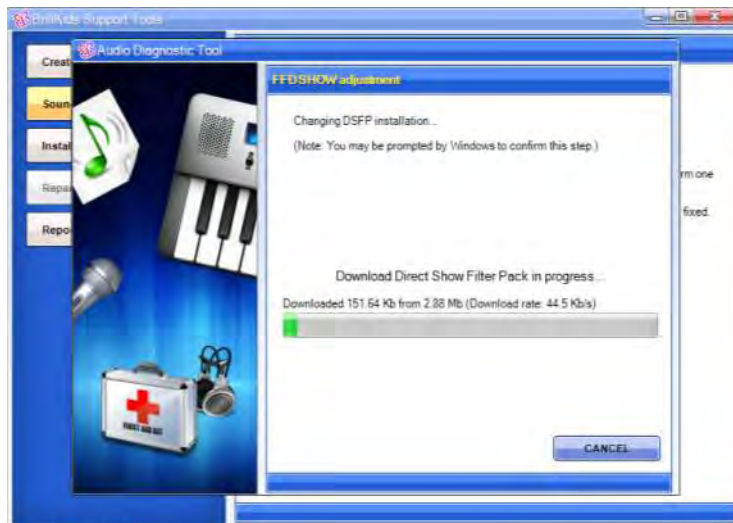
Create Diagnostic Report

Click on **Create a Diagnostic Report** to create a zip file containing information about your Little Musician. This file will help us analyze and resolve your problem.



Sound Problems

If you have a sound problem with Little Musician, click on **Start Wizard** to run the Audio Diagnostic Wizard which will help you fix any sound problems you are experiencing.



Install Adobe Flash

To play flash animations you must have Adobe Flash installed. If you have problems with your animations click on **Install Adobe Flash Plugin** to install Adobe Flash.

Repair .Net Framework

Sometimes, the reason why your Little Musician is not working properly is because of a problem in the Microsoft .NET Framework installed in your computer. Just click on **Repair .NET Framework** to resolve any issues in your .NET Framework instantly!

Report a Problem

Report a problem to BrillKids Support by filling out a short form with your details along with a Diagnostic Report so that we can help you resolve your problem.



The screenshot shows the BrillKids Support Tool interface. On the left is a blue sidebar with five buttons: 'Create Diagnostic Report', 'Reset Problems?', 'Install Adobe Flash', 'Repair .NET Framework', and 'Report a Problem' (highlighted in yellow). The main window is titled 'BrillKids Support Tool' and contains a form for reporting a problem. The form has fields for 'Name', 'Email', and 'Subject', and a large text area for 'Summary'. Below the form is an 'Attachments' section with a checked checkbox for 'Include Diagnostic Report file'. A note at the bottom states: 'Send a Diagnostic Report with your message to the BrillKids Support Team- this will help us troubleshoot and provide you with a solution faster.' A 'Send to BrillKids support' button is at the bottom.

Reporting Software Crashes

If Little Musician has encountered an unrecoverable crash, an error message will pop up as shown below:

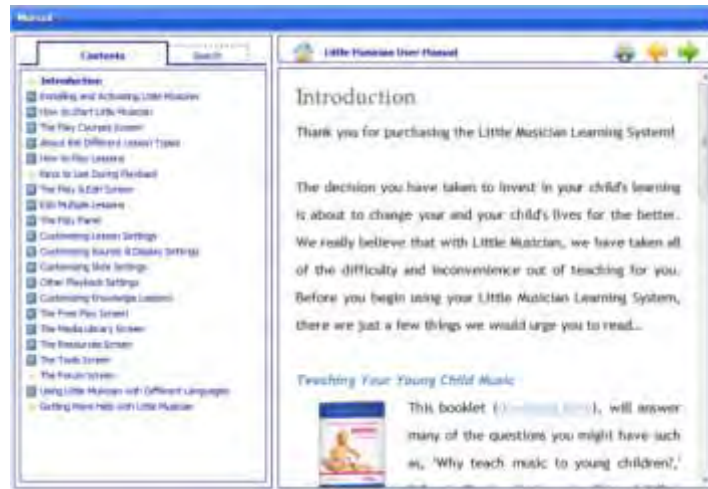


We encourage you to send us your **Error Report** to help us know more about your problem. To report the problem, simply click on the **Send Error Report** button. This will open another dialogue box which will ask you for more details.

After adding your additional information about the error, ***remember to type in your email address or your forum username*** so that a BrillKids Customer Support officer can get back to you as soon as possible!

Manual

Need help with using Little Musician's features and functions? Check your **User Manual** - it contains well-organized content and detailed information on everything your Little Musician is capable of doing!



Feedback

Got any comments or suggestions? Write to us via the Support Screen's Feedback form - we'd love to hear from you!

