



Vijeo Designer Lite software

### Presentation

The cross-platform Vijeo Designer configuration software can be used to create operator dialogue applications for controlling automation systems for:

- Magelis STO and STU terminals (Vijeo Designer Limited Edition is sufficient)
- Magelis XBT GT and XBT GK terminals
- Magelis XBT GH portable terminals
- Magelis GTW open terminals
- Magelis Smart industrial PCs, Magelis Compact iPC and PC BOX

**Note:** For other semi-graphic Magelis XBT terminals (except Magelis XBT G), please refer to the Vijeo Designer Lite development software. **Magelis XBT G terminals are no longer supported.**

Vijeo Designer and a suitable terminal can be combined to provide a solution for each and every control station requirement, at the cost of a simple software reconfiguration.

Capable of supporting video image streaming, the Magelis Vijeo Designer offer provides access to new types of application. Users can view their process instantly or following a delay, on the same screen as the HMI dialogue.

Vijeo Designer uses Magelis Ethernet TCP/IP connectivity and is therefore able to support WEB Gate remote access, the sharing of application data between terminals, the transfer of recipes and logs for variables and much more - all with total security.

Applications can take on an international nature, because Vijeo Designer supports up to 15 languages simultaneously in one project (40 alphabets are available on the XBT GT/GK terminal). The interface and documentation for Vijeo Designer are available in 7 languages: English, French, German, Italian, Brazilian Portuguese, Simplified Chinese and Spanish.

Vijeo Designer is the HMI component of SoMachine. Vijeo Designer will run on any PC with Windows 7, XP Professional, Windows Vista or Windows 7. It supports WYSIWYG simulation (1) of the expanded application (without Magelis GT/GK/GTW terminal or target Magelis iPC), the simulation of PLC variables (I/O, internal bits and words) and ensures that the application runs in total security on the Magelis GT/GK/GTW base terminal or Magelis industrial PCs.



Example project

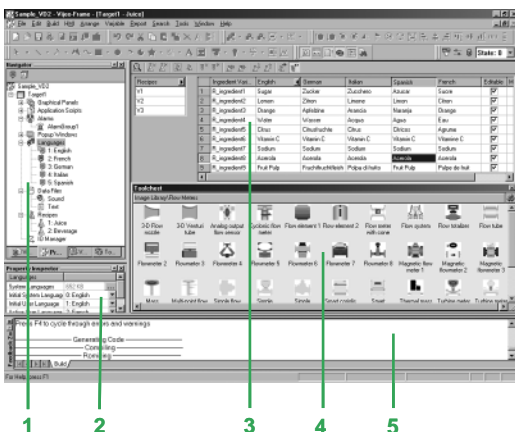
### Configuration

Vijeo Designer configuration software enables operator dialogue projects to be processed quickly and easily thanks to its advanced ergonomics using up to five configurable windows:

- 1 Browser window
- 2 Object List window
- 3 Recipes window
- 4 Library of Animated Graphic Objects and Image Objects window
- 5 Report window

The software also offers a complete set of application management tools for:

- Project creation, whereby a project comprises one or a number of applications for Magelis GT/GK/GTW terminals, Smart, Compact iPC and PC BOX with sharing of variables between terminals (up to 8 terminals and 300 variables)
- Recipe management (32 groups of 256 recipes comprising up to 1024 ingredients)
- Cross-referencing application variables
- Documentation of mimics for an application
- A full simulation mode for testing the application from the design office
- Barcode reader management via:
  - USB port on multifunction XBT GT terminals, Magelis GT/GK/GTW keypad terminals and Magelis industrial PCs
  - COM1 or COM2 serial port on Magelis GT/GK/GTW (2)
- USB keyboard and mouse support for all terminals incorporating a USB port (only one peripheral can be connected at any one time)
- Retrieval of symbol files for PLC variables generated by TwidoSuite, PL7, Concept, ProWORX 32 and Unity Pro software (3)
- Report printing



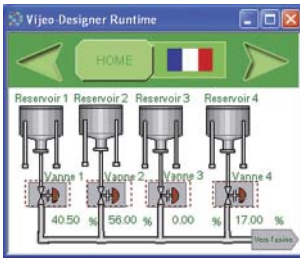
(1) WYSIWYG: What You See Is What You Get (on the screen of the target terminal)  
 (2) Except XBT GT11 terminals  
 (3) DDT structured types and "unlocated" variables are supported.



### Graphics editor

The graphics editor in Vijeo Designer offers interface consistency for simple objects as well as for more sophisticated ones. It enables application developers to create mimics easily based on:

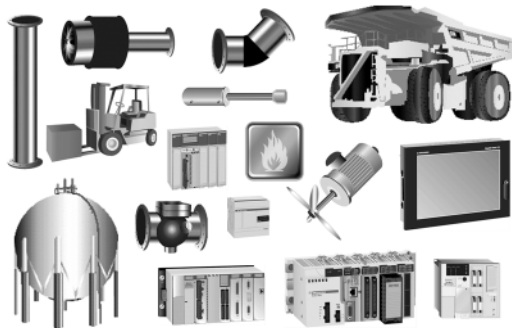
- Simple objects to be configured:
  - Points, lines, rectangles, ellipses, arcs
  - Bar graphs, gauges, tanks, fillers, pie charts, curves
  - Polylines, polygons, regular polygons, Bézier curves, scales
  - Texts, images or alarm summary, etc.
- Preconfigured advanced objects: switches, radio buttons, indicators, buttons, tanks, bar graphs, potentiometers, selectors, text or number fields, enumerated lists, etc.
- Hiding of screens and application structure types



### Object animations

8 types of graphic-object animation support the rapid creation of animated mimics on the basis of:

- Pressing the touch panel
- Change of colour
- Filling
- Movement
- Rotation
- Size
- Visibility
- Display of associated value



### Library of animated graphic objects

The library of animated graphic objects makes the process of creating mimics very efficient thanks to the numerous "ready-made" animation objects. It includes more than 4000 "industrial" vector images in 2 or 3 dimensions. Simply "drag and drop" the object using the mouse to position it on the mimic being created.

User-defined objects can be added to this library using the same simple "drag and drop" method.

### Java scripts

Vijeo Designer supports the processing of information using Java language scripts. This function facilitates the running of complex animations, the automation of tasks within the terminal and the management of calculations in order to relieve the load on the PLC programs.

The scripts (50 lines, max.) can be associated with:

- Variables
- Operator actions
- Screens
- The application itself

```

//Script Created: 10 09, 2001
//
// Description:
//
//-----
// Replace this line with your script
int pos;

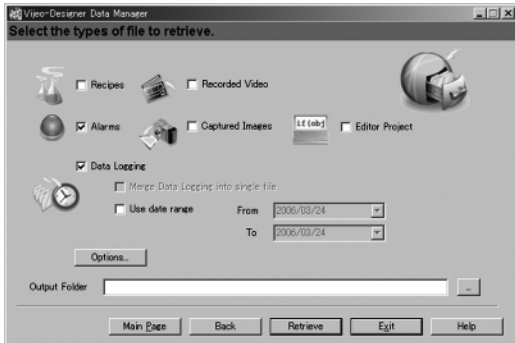
if (movebottles.getValue() != 0) // If conveyor is OFF, do not move bottles
{
    pos = BottlePos.getValue();
    if (pos >= 1000)
        pos = 0; // If bottle position has been the out of display area, reset position.
    pos = pos + 10 + 2 * ConveyorSpeed.getValue();
    BottlePos.write(pos);
}
    
```

### Customizable resources

To enable applications to be customized in accordance with customer requirements, Vijeo Designer features a new resource concept that makes it possible to define styles (colours, images, character fonts, text lists).

To quickly customize a generic application to meet customer requirements, simply assign these styles to the objects concerned.

The resource concept is supported by the following native objects: *Meter*, *Bar Graph*, *Slider*, *Potentiometer*, *Selector*, *Text List* and *Image List*.



Data Manager: Transfer recipes, videos, images, etc. via Ethernet or USB, simply by clicking the mouse

### Advanced functions

Based on new information technologies, Vijeo Designer features a large number of advanced functions for processing a higher volume of data, both faster and more reliably:

- Multimedia data management in the most popular formats:
  - Image display (jpeg, bmp, emf and png files)
  - Text display and processing (txt files)
  - Sound message processing (wav files)
- Alarm or curve logs recorded
- Zoom in/out on trending curves for a detailed analysis
- Alarm management All variables can be categorized as "Alarms" and can be customized in respect of visualization and acknowledgment. These Boolean and analogue threshold type alarms can be printed on the fly.
- Multimode application transfer: via serial link, via USB, via Ethernet network, and by using Compact Flash memory card on multifunction terminals
- Backup of application source files on the terminal or iPC to facilitate maintenance
- User-friendly data exchange between PC and terminal using the Data Manager tool
- Integrated FTP server for downloading/uploading recipes via Ethernet TCP/IP and restoring logs to Magelis GT/GK/GTW and Magelis iPC
- Multiport communication for multifunction terminals - 2 serial links and 1 Ethernet network can be active simultaneously
- Action table for associating a particular behaviour with an event
- Use of a USB memory stick (up to 4 GB) for application downloads/uploads, data retrieval or recipe exchange
- E-mail on action and event (the e-mail text can contain up to 1000 characters)



Alarm management

### WEB Gate remote connection

Vijeo Designer supports a WEB Gate remote connection with any platform which has an Ethernet connection point

WEB Gate supports remote visualization of Vijeo Designer applications with Internet Explorer on any PC running Windows XP or Windows Vista. The size of the page displayed is determined by the terminal.

WEB Gate supports the display of pages similar to those in the Vijeo Designer application, or of different pages, i.e. start-up pages and navigation pages can be differentiated in order to reflect the type of access (terminal/WEB Gate).

Several connections are possible at the same time, with the number depending on the size of the application.

The high security mode of WEB Gate excludes any risk of applications jamming as a result of variables being modified via the terminal and WEB Gate at the same time.

For increased confidentiality:

- WEB Gate access can be restricted to only those PCs whose IP address appears in the licensing list.
- Some Vijeo Designer functions are not supported by WEB Gate:
  - Application shutdown, restart
  - Terminal configuration
  - Reading of an acoustic animation (sound file)
  - Display of a recorded video sequence

### WEB Maintenance remote diagnostics

In addition to WEB Gate, Vijeo Designer features the embedded diagnostics service WEB Maintenance - Transparent Ready WEB Server Class B15 (1) - this server's navigation bar features an option for accessing the following functions:

- WEB Gate
- Animation tables
- Web interface for the restoration of data files (recipes, logs, multimedia files)

**Note:** Terminals programmed using Vijeo Designer can be accessed directly via their names. This function is supported by the DHCP and DNS network services.



Report printing

(1) Please consult our "Control and automation, Ethernet TCP/IP and the Web" catalogue.

Characteristics of Vijeo Designer applications						
<b>General characteristics</b>						
Number of targets	32, Magelis STO/STU or GT/GK/GH/GTW type terminals or Magelis industrial PCs					
Number of internal and external variables	8000					
Number of lines per Java script	50 (1)					
Sharing data between terminals	Up to 300 variables between 8 terminals, without router PLC Proprietary protocol above TCP/IP					
Internationalization	Up to 15 languages supported by 34 western alphabets, 4 Asian alphabets, 2 middle eastern alphabets:					
Western alphabets	Afrikaans Swedish Russian Norwegian Italian Greek	Belarusian Albanian Czech Serbian Polish Latvian	Spanish Bulgarian German Turkish Slovak Portuguese	Dutch Estonian Catalan French Ukrainian Slovenian	Lithuanian Hungarian Finnish Croatian Basque	Romanian Macedonian Indonesian French Danish
Asian alphabets	Simplified Chinese	Korean	Japanese	Taiwanese		
Eastern alphabets	Hebrew	Arabic				
Functions	Languages can be programmed or selected dynamically via the menu. The character fonts are embedded in the application. The process is based on the export/import of texts in CSV format, which can be edited by the translator (each text is stamped with a unique ID).					
Keyboards that can be used to enter data	Three types of keyboard are available: - Standard QWERTY or AZERTY - Alphabetical - Compact, suitable for small screens and for pages with priority display zones					
Storage of source code	- The application source code can be stored either on the terminal or on the iPC - Password safeguards confidentiality - On request, the application can be verified each time the terminal starts up by means of a CRC calculation ( <i>High Security</i> function).					
<b>Page characteristics</b>						
Internal or external variables	800					
Objects	800					
Switches	30					
Pop-up windows	3					
Number of lines per Java script	50 (1)					
<b>Library of graphic objects</b>						
Number of objects available	> 4000					
Type	2D and 3D "industrial" vector images					
Expandable	Yes					
<b>Recipes</b>						
Number of groups	32					
Composition of a group	Up to 1024 ingredients for 256 recipes					
Format	Proprietary or CSV					
Multilingual support	Complete for labels and ingredients					
<b>Action tables</b>						
Number of actions	100					
Composition	Maximum of 16 commands per action					
Action type	- Periodic - Planned - Conditioned - Event-based					

(1) Indicative data for a script executed cyclically.

## Characteristics of Vijeo Designer applications (continued)

### Alarms

Number of active alarms, records or logs	9999
Type	Any variable (internal or external, Boolean or analogue threshold) can act as an alarm.
Customization	Any alarm type variable can feature a customized interface for its viewing and acknowledgment.
Associated reflex functions	Any alarm type variable can be associated with reflex functions linked to the appearance of the alarm concerned: <ul style="list-style-type: none"> <li>- Action on appearance</li> <li>- Action on selection</li> <li>- Message for the alarm bar, etc.</li> </ul>

### Integrated diagnostics

The PLC "Diag buffer" function can be accessed via the following protocols:

	Modicon M340 Unity Pro	Premium PL7	Premium Unity Pro	Quantum Unity Pro
UNITE-Series				
UNITE-TCP/IP XWAY				
UMAS Modbus TCP				
UMAS Modbus RTU				
UMAS Modbus Plus				
UMAS UNITE-Series				
UMAS UNITE-TCP/IP XWAY				
UMAS Modbus TCP USB PPP				

Accessible  
 Not accessible

### Video functions

Platform	XBT GT terminals	Magelis GTW terminals Magelis industrial PCs	
Video source	NTSC, PAL video channel	Webcam	
Input format	Composite video (chrominance+luminance) via RCA plug	Webcam via USB port	
Display resolution	NTSC: 640 x 480 pixels PAL: 768 x 576 pixels	Depending on webcam characteristics (usually 640 x 480 pixels)	
Duration of dynamic memorization	10 mins max., can be configured, in circular memory (MPEG-4 format)	–	
<b>Recording of sequences</b>	Media	Compact Flash card USB memory stick	
	Number of sequences	Up to 200	
	Recording format	Simple MPEG-4 profile	
	Recording resolution	320 x 240 pixels	
	Typical recording rate	3.2 MB/minute	Determined by the CODEC used on the PC
	Typical capacity	Up to 28 sequences lasting up to 10 minutes can be stored on a 1 GB Compact Flash card.	Determined by hard disk space available

Characteristics of Vijeo Designer applications (continued)		
<b>Screen capture</b>		
Format		JPEG
Resolution		Display resolution
Ranges supported		XBT GT terminals (XBT GT 1105 and higher), Magelis industrial PCs
Video window included		Yes
<b>Backup</b>		
Format		JPEG
XBT GT 1105 terminals and higher		On Compact Flash card On USB memory stick
Magelis industrial PCs Compact iPC		On Compact Flash card On hard disk On USB memory stick
<b>Transfer</b>		
		Via USB memory stick or Data Manager on the terminal or on an iPC equipped with an Ethernet connection or USB port
<b>Printing</b>		
XBT GT 1105 terminals and higher		Via USB port (1) or via Ethernet port, with compatible printer (2): <input type="checkbox"/> PCL5 - HP Officejet Pro - HP LaserJet <input type="checkbox"/> PCL3 - HP Deskjet series - HP Business InkJet - HP Officejet Pro - HP LaserJet - HP Photosmart series <input type="checkbox"/> ASCII
	From Magelis industrial PC	With any printer equipped with a suitable driver for Windows
<b>Creating and printing reports and barcodes</b>		
<b>Creating reports</b>		
		Reports are created in the same way and with the same <i>wysiwyg</i> editor as for Vijeo Designer pages.
<b>Printing reports</b>		
	Magelis GT/GK/GH terminals	Text printer via: <input type="checkbox"/> COM port <input type="checkbox"/> USB port with PIO adapter NB: Printers with a USB port and network printers are not supported.
	Magelis GTW terminals or Magelis industrial PCs iPC or PC BOX	Based on Windows printing configuration, using a text printer via: <input type="checkbox"/> Parallel port <input type="checkbox"/> COM port <input type="checkbox"/> Network
<b>Printing barcodes</b>		
		Can be done by sending special characters to switch the printer to barcode printing mode Main barcode types supported: <input type="checkbox"/> UPC-A <input type="checkbox"/> UPC-E <input type="checkbox"/> JAN/EAN8 <input type="checkbox"/> JAN/EAN13 <input type="checkbox"/> ITF <input type="checkbox"/> CODE39 <input type="checkbox"/> CODE93 <input type="checkbox"/> CODE128 <input type="checkbox"/> CODABAR (NW-7)
<b>Internet Explorer browser object</b>		
Support		Pages created with Vijeo Designer for Magelis industrial PCs can incorporate a Microsoft Internet Explorer browser object.
Possible functions		Display, in all or part of the Vijeo Designer screen page, of: - HTML format pages: for example, websites, pages from Microsoft Office Word, Excel and PowerPoint documents saved in HTML format - Documents in Adobe pdf format - Macromedia Flash presentations - Video sequence ( <i>streaming</i> ) originating from a video server on IP - Any other Active X featuring a USB interface

(1) A printer can be connected to the USB port of XBT GT terminals (XBT GT 1105 and higher) as long as the printer connection is serial or parallel. A serial-to-USB or parallel-to-USB conversion cable is also required.  
 (2) For a complete list of Hewlett Packard and other manufacturer printers supported, please consult your Customer Care Center.

### Characteristics of Vijeo Designer applications (continued)

#### Displaying user documentation pages on the XBT GT/GK

Support	User documentation stored on the Compact Flash card of the XBT GT/GK can be displayed with Vijeo Designer, provided it is in HTML V4.01 CSS 1.0 format. Most DTP software supports export to HTML format: Adobe Acrobat, Microsoft Word, Microsoft PowerPoint, etc.
---------	--

#### Traceability, logs

	Vijeo Designer offers increased flexibility for implementing data traceability by means of sampling and management of log files. Every variable can be written in a recording group. All data is time-stamped and date-stamped (based on GMT) to facilitate comparison of data from different sites. <i>Time Zone</i> and DST are also supported so that local characteristics such as the change from winter to summer time can be taken into account.
--	---

A recording group defines the following elements:	Recording type	- Periodic - Event-based
	Storage media	- Compact Flash memory card - SRAM terminal memory (for alarms) - Hard disk (Magelis Compact iPC and PC BOX) - USB memory stick
	Maximum size	- Maximum number of recordings - Maximum file size
	Format	- Proprietary - CSV

#### Capacity

The designer of the application concerned is entirely free to select the number of variables sampled and the sampling frequency (these will be determined by the media present on the target).

The following are typical example values by terminal:	<b>Target terminal</b>	<b>XBT GT/GK</b>	<b>Magelis GTW</b>	<b>Magelis Smart</b>	<b>Magelis PC BOX Magelis Compact iPC</b>
	Number of variables sampled	100	250		
	Target storage media	Compact Flash card			Hard disk
	Duration and maximum size of samples per variable	Up to 5 years of recordings 8 MB of samples per variable maximum			

#### Industrial intelligence option: Intelligent Data Service

	Intelligent Data Service is an extension of Vijeo Designer for the PC (Magelis or standard PC) which supports the implementation of control solutions for one or a number of terminals (up to 8). This extension offers total traceability. Both process variables and operator actions are tracked so that the right decisions can be made at the right time (Industrial Business Intelligence).
Powerful	Data can be collected from multiple terminals via Ethernet without impairing HMI reaction times.
Flexible	Various storage methods are supported, CSV file can be read directly in MS Excel, recording in user-defined format in an SQL database or secure IDV (Intelligent Data Vault) files to ensure compatibility with the requirements of 21 CFR Part 11.
Innovative	Just a few clicks of the mouse are all that is required to create control panels which can be accessed from any WEB browser (Silverlight) or clear and well-organised reporting documents.

#### Data Manager

	The user-friendly Data Manager tool is used to transfer data from and to a terminal. Vijeo Designer does not have to be installed in order to run this program, which is available free of charge.	
Data Manager can be installed as an independent tool supporting the following types of data transfer:	Logs	- Retrieval of log data for variables - Conversion into a single CSV format file
	Recipes	- Transfer from and to terminal - Modification using an integrated editor
	Project	- Download to PC of the project stored on Compact Flash memory card
	Video sequences, screen captures	- Download to PC

#### Data sharing

	Vijeo Designer offers the possibility of sharing data between terminals (this option simply needs to be configured). The system works without a router PLC. Up to 300 variables can be shared between a maximum of 8 terminals. The exchange protocol is a TCP/IP proprietary upper layer. The high-security mode excludes any risk of applications jamming, which can occur when attempts are made to modify a variable via more than one terminal at the same time.	
Vijeo Designer imposes the following restrictions on the sharing of data:	Sharing of external variables on the terminal	These variables cannot be used in the following objects: - <i>Trend Graphs</i> - <i>Data Graphs</i> These variables cannot be saved via the terminal.
	System and recipe variables	The direct sharing of these variables by means of configuration settings is not supported. However, sharing can be programmed using the <i>ReadFromVar</i> and <i>WriteToVar</i> functions.

Characteristics of Vijeo Designer applications (continued)	
<b>Terminal access security</b>	
	Access to all or some of the objects in Vijeo Designer can be made subject to users proving that they are in possession of sufficient rights: user name, password.
Types of access right	<ul style="list-style-type: none"> <li>- Application: pages, buttons with confirmation, etc.</li> <li>- Data Manager: access via FTP service</li> <li>- Web Gate: Intranet/Extranet access (IP address filtering)</li> </ul>
Number of users per group of access rights	100 max.
Number of groups of access rights	20 max.
Automatic locking	If active: automatic blocking of access via keyboard if no entries are made for a set period of time
<b>Target security</b>	
	Vijeo Designer can increase the confidentiality of applications on Magelis industrial PCs by putting protection mechanisms in place at two levels:
BIOS	<ul style="list-style-type: none"> <li>- Disabling of start-up via peripheral connected to USB port</li> <li>- Disabling of USB ports</li> <li>- Password protection for BIOS access</li> </ul>
Vijeo Designer Run Time	<ul style="list-style-type: none"> <li>- Hiding of Windows taskbar</li> <li>- Disabling of toggling between tasks (ALT+TAB)</li> <li>- Disabling of Windows Security Manager (CTRL+ALT+DEL), including the Task Manager</li> <li>- Disabling of Windows shortcuts</li> <li>- Disabling of the "Windows logo" key on the keyboard</li> <li>- Disabling of shortcut to exit run time (CTRL+Z)</li> </ul>
<b>Schneider Electric protocols</b>	
	<p>Vijeo Designer supports Schneider Electric protocols:</p> <ul style="list-style-type: none"> <li>- Modbus RTU Master</li> <li>- Modbus TCP Master</li> <li>- Modbus Plus (1)</li> <li>- Modbus 32-bit extensions</li> <li>- ELAU PacDrive (ELAU C00x/LMCx00)</li> <li>- Uni-Telway</li> <li>- UniTE TCP/IP</li> <li>- USB terminal port of Modicon M340 CPUs</li> <li>- FIPIO (5), FIPWAY (5)</li> </ul> <p>All Schneider Electric drivers provide IEC access to input bits/words and output bits/words: Modbus (RTU and TCP), Modbus Plus (GMU and USB), Uni-Telway, Xway.                      Direct I/O access authorises access to the hardware input and output registers.                      The register addresses adhere to the syntax of IEC standards and to the addressing of the UNITY configuration software (%I, %IW, %Q, %QW).                      If requested by the user, the variables associated with a PLC can be re-read ('on demand scan' function).                      The DDT and unlocated variables of Unity Pro are supported.</p>
<b>Third-party protocols</b>	
	Vijeo Designer also supports the following protocols and PLCs:
Mitsubishi	<p>Melsec protocols: A/Q CPU (SIO), A/Q Ethernet (TCP), A Link (SIO), QnA CPU (SIO), Q Ethernet (UDP), FX (CPU), FX 3U (CPU), QUTE for Q00JCPU                      Except for Melsec-A Link (SIO), Mitsubishi serial link protocols do not work on the RJ45 port (1).</p>
Omron	<p>Sysmac protocols: FINS (SIO), LINK (SIO), FINS (Ethernet) and Trajexia                      OMRON serial link protocols do not work on the RJ45 port. (2)</p>
Rockwell Automation	<p>Allen-Bradley protocols: DF1-Full Duplex, RS DataHighway 485, Ethernet IP (3) (PLC5, SLC500, MicroLogix, ControlLogix), Ethernet IP native (2) (ControlLogix), Ethernet IP High Speed access, DeviceNet Slave (6)</p>
Siemens	<p>Simatic protocols: MPI (S7-300/400), MPI Direct, RK512/3964R (S7-300/400), PPI, Siemens Ethernet (ISO-on-TCP/Profinet), MPI pass-through function                      The S7-300/400 MPI Adapter and RK512/3964R - RS 485 connection serial link protocols do not work on the RJ45 port. (2)                      Profibus DP protocol: via XBT ZG PDP (4)</p>

(1) Via USB cable: XBT ZG UMP for XBT GT 2●●● and higher, TSX C USB MBP for Smart and Compact iPC  
 (2) They are supported on XBT GT (SUB-D connector, XBT GT2 and higher).  
 (3) Certified ODVA compatibility.  
 (4) Certified by the Profibus Foundation.  
 (5) Via USB FIPIO module: TSX CUSB FIP  
 (6) Via Device Net module: XBT ZGDVN



### Characteristics of Vijeo Designer applications (continued)

#### Schneider Electric applications

Support	Pages created with Vijeo Designer for Magelis industrial PCs can run Schneider Electric software in a window that is independent of the Windows system.
Possible functions	It is also possible to run frequently-used application software as and when required, including: <ul style="list-style-type: none"> <li>- Unity Pro</li> <li>- TwidoSuite</li> <li>- Advantys STB configuration software</li> <li>- PL7</li> <li>- PowerSuite, etc.</li> </ul>

### Characteristics of the Vijeo Designer software

Operating system compatibility	Windows XP Professional Windows Vista (32 bits) Windows 7 (32 bits)
Graphic library	Library of vector graphic objects shared with Vijeo Citect
Number of objects available	> 4000
Type	2D and 3D "industrial" vector images
Expandable	Yes
Application validation	Calculation of the maximum memory space occupied by the application. Verification of the capacity of the configured target (XBT GT terminal, Magelis industrial PCs) to run the application in total security: <ul style="list-style-type: none"> <li>- Physical memory capacity</li> <li>- Available functions</li> </ul> If applicable: <ul style="list-style-type: none"> <li>- Disabling of application upload/download</li> <li>- Direction towards sections of the online help, which will provide tips for optimizing the application</li> </ul>
Interface languages	Vijeo Designer software screens and online help available in English, French, German, Italian, Simplified Chinese and Spanish
Documentation	Available in electronic format in English, French, German, Italian, Simplified Chinese and Spanish. Not available in hard copy.
Self-training	Multimedia tool (1 hour 30 minutes) in English/French included
User licences	Four types of licence are available: <ul style="list-style-type: none"> <li>- <i>Single</i>: 1 station</li> <li>- <i>Group</i>: 3 stations</li> <li>- <i>Team</i>: 10 stations</li> <li>- <i>Facility</i>: unlimited number of stations on one site</li> </ul> Supplied with or without transfer cable(s) for USB port: <b>XBT ZG 935</b> , see Table of references for each Magelis terminal on page 36349/11.
Registration	Recommended (via fax, e-mail or website <a href="http://www.schneider-electric.com/swregistration">www.schneider-electric.com/swregistration</a> ) to gain access to additional resources such as application examples, etc.

### Services

Switch2VijeoDesigner: Migration of XBTL 1000 applications	<p>The Switch2VijeoDesigner service offer makes it even easier to migrate XBTL 1000 applications created on XBT F terminals to Vijeo Designer applications for use on XBT GT/GK terminals.</p> <p>The service provides:</p> <ul style="list-style-type: none"> <li>- Analysis of the complexity of migration: hardware, software, communication with PLCs, etc.</li> <li>- Analysis of the new functional requirements</li> <li>- Proposal for migration methodology</li> </ul> <p>The possible deliverables include:</p> <ul style="list-style-type: none"> <li>- Simple conversion</li> <li>- Full migration of complex machines</li> <li>- Migration to SCADA system</li> <li>- Standardization process for multiple machines</li> </ul> <p>For more information on this service offer, please consult your Customer Care Center.</p>
--	--



VJD SUD TGA V51M

### References

All licences for the Vijeo Designer configuration software listed below consist of a DVD containing:

- Vijeo Designer software, including:
  - Copyright-free *stand-alone* installation of Data Manager
  - User documentation in electronic format, comprising:
    - Online help for the software
    - User manual for the supported targets
    - Setup manual for the different protocols supported
  - A multimedia self-teaching tool lasting 1 hour 30 minutes in English/French
  - The communication protocols described on page 36349/9

**Note:** Magelis STO/STU terminals can be programmed using Vijeo Designer Limited Edition. Vijeo Designer V5.1 supports applications created with any version of Vijeo Designer ≥V4.6. If you are updating an earlier application, please consult our Schneider Electric Customer Care Centre.

### Single-station Build Time licences

Description	Licence type	Application transfer cable		Reference	Weight kg
		PC side	Magelis terminal side		
Vijeo Designer configuration software	Single (1 station)	–	– (1)	VJD SND TGS V51M	0.125
		USB	Magelis STO/STU Magelis GT/GK/GTW Magelis industrial PCs	VJD SUD TGA V51M	0.330

### Multi-station Build Time licences

Description	Licence type	Number of stations	Reference	Weight
Vijeo Designer configuration software	Group	3	VJD GND TGS V51M	0.125
	Team	10	VJD TND TGS V51M	0.125
	Facility	Unlimited number of stations on one site	VJD FND TGS V51M	0.125

### Run Time licences (2)

Description	Licence type	Number of stations	Reference	Weight
Vijeo Designer Run Time licence for Magelis GTW & iPC	Single	1	VJDSNRTMPC	–
Intelligent Data Service licence extension for Vijeo Designer Run Time	Single	1	VJDSNTRCKV51M	–

(1) References for application transfer cables (PC to Magelis GT/GK/GTW terminal) are provided in Separate parts on page 36374/5.

(2) The Run Time licence drives the execution of an application. It is used for Magelis and Magelis GTW industrial PCs only.