

ORIGINAL INSTRUCTIONS

CAUTION – READ THESE INSTRUCTIONS BEFORE USING THE MACHINE

User instructions

HM10, HM10HD, HM20HD

Carpet Soil Extraction Machines



Contents

- 1 Product Information 3
 - 1.1 Important Safety Advice 3
 - 1.2 Guidelines for the operator 4
 - 1.3 Transporting the machine 4
 - 1.4 Electrical connection 4
 - 1.5 Symbols & Markings 4
- 2 Controls 5
- 3 Preparing for use 5
- 4 Operation 5
 - 4.1 Starting the machine 5
 - 4.2 Using the machine 5
 - 4.3 Cleaning Carpet 5
 - 4.4 Cleaning Stairs 6
 - 4.5 Cleaning Upholstery 6
- 5 When Cleaning is Finished 6
 - 5.1 Draining and Cleaning 6
 - 5.2 Storage 6
 - 5.3 Maintenance 6
- 6 After Sales Service 6
- 7 Guarantee 7
- 8 Waste Electrical & Electronic Equipment (WEEE) 7
- 9 Technical specification 7
- 10 Accessories and Cleaning Chemicals 8
- 11 Fault Diagnosis 8
- 12 Parts Lists & Diagrams 9
- 13 Declaration of Conformity 33

IMPORTANT
BEFORE USE READ THESE INSTRUCTIONS AND RETAIN FOR FUTURE REFERENCE

1 Product Information

The Hydromist range of carpet soil extraction machines are designed for the efficient cleaning of carpets and upholstery.

We recommend that any user not familiar with carpet cleaning should read these user instructions fully before using the machine. If you have any queries please contact the supplier who you purchased the machine from or Truvox International on the contact details provided at the back.

These machines must only be used for the manufacturer's approved application. **Do not use** the machine where it is suspected that the carpet, floor or upholstery contains health endangering dust or debris such as asbestos or chemical waste. If this is suspected **do not proceed**, contact your supervisor, supplier or Truvox International for advice.

The following instructions contain important information about the machine and safety advice for the operator.

Equipment must be operated, serviced and maintained in accordance with the manufacturer's instructions. **If in doubt contact the supplier of your machine.**

These instructions are valid for the following models:

HM10, HM10HD, HM20HD

1.1 Important Safety Advice

When using electrical equipment basic safety precautions should be followed including the following.

- Read all instructions carefully before use.
- This appliance is suitable for commercial use, for example in hotels, schools, hospitals, factories, shops, offices, rental businesses and other than normal housekeeping purposes.
- This machine is not intended for use by persons (including children) with reduced physical, sensory or mental capabilities, or lack of experience and knowledge, unless they have been given supervision or instruction concerning use of the machine by a person responsible for their safety.
- Keep children and unauthorised persons away from the machine when in use.

- Before using the appliance, check that the mains power voltage corresponds with the voltage shown on the rating plate.
- All parts are to be positioned as indicated in the instructions before using the machine.
- Do not operate the machine if it malfunctions or is damaged in any way. Contact an authorised service agent for repair or adjustment.
- Do not operate switches or touch the mains plug with wet hands as this may cause electric shock.
- When unplugging pull the plug, not the supply cord.
- Do not pull or carry by cord, use cord as a handle, close a door on cord, or pull around sharp edges or corners.
- Keep hair, loose clothing, fingers and all parts of body away from openings and moving parts.
- Keep cord away from heated surfaces.
- Do not use where hazardous dust is present.
- Do not use in an explosive atmosphere.
- Do not pick up oil or other flammable material.
- Do not use to pick up moisture or any liquids.
- Do not leave the machine connected to the electricity supply when not in use, always remove the plug from the socket-outlet.
- Switch off the machine before removing the plug.
- Keep the power supply cord clear of moving parts. During operation hazard may occur when running the machine over the power supply cord.
- The power supply cord must be regularly inspected for signs of damage. If the power supply cord is damaged, it shall only be replaced by the manufacturer, its service agent or a similar qualified person in order to avoid a hazard.
- Only replace the supply cord with the type specified in the instruction manual.
- Do not operate the machine with a damaged supply cord or plug, or after the machine malfunctions or is damaged in any way. Contact an authorised Service Agent for repair or adjustment.
- The plug of the power supply cord must be removed from the socket-outlet before commencing cleaning of the machine or undertaking maintenance operations.
- Do not kink or twist the power cord.
- Take care when using a machine near the top of stairs to avoid overbalancing.

1.2 Guidelines for the operator

WARNING



Operators must be fully trained in the use of the machine in accordance with these instructions, able to perform user maintenance and the correct selection of accessories.

- Operators should be physically capable to manoeuvre, transport and operate the machine.
- Operators should be able to recognise unusual operation of the machine and report any problems.
- Only use the machine on firm level surfaces.
- Wear suitable footwear to avoid slipping.
- Wear suitable clothing to keep dry and warm.
- Where possible implement job rotation and adequate rest periods to avoid continuous use of the same muscles.
- Do not leave machine running unattended
- Do not smoke when using the machine.
- Do not put any objects into openings. Do not use with any opening blocked: keep free of dust, debris, hair, or anything that may reduce air flow.



CAUTION - This machine is for indoor use only and should not be used or stored outdoors or in wet conditions.



CAUTION - If it is suspected that there is hazardous dust or flammable materials stop cleaning the area immediately and consult your superior.



WARNING Only use accessories and spare parts provided with the machine or those approved by the manufacturer. The use of other accessories may impair the safety of the machine.



WARNING – Should water emit from the machine exhaust **switch off immediately** and refer to instructions for **Using the Machine**

- Ensure the machine is switched off before adding or changing accessories.

1.3 Transporting the machine



CAUTION – Incorrect lifting techniques may result in personal injury, where applicable do not lift large and heavy machines without assistance. We advise that the manual handling regulations are followed. Please refer to the technical table for details on weight of machine.

When transporting the machine ensure that all components, tanks and removable parts are securely fastened, and that the supply cord and

plug are not trailing. Detach hose and wand from machine where applicable.

Do not lift or transport the machine whilst containing liquid as this will add considerably to the weight.

Take extreme care when moving the machine up or down steps or stairs.

1.4 Electrical connection

Before connecting the machine to the power supply, check that your supply voltage corresponds with that marked on the rating label.

The power supply cord plus any extension leads should not exceed 30m in total, otherwise you may experience problems starting up the machine. The cross-section of any extension cable wiring must be at least 2,5 mm².

Should an extension cord be used, ensure cord rating is adequate for the equipment. Do not use extension cord in coiled condition as this could result in overheating of the cord.

UK only

The supply cord for 230v models is fitted with a plug containing a 13 amp fuse. Should the fuse require replacement it must only be replaced by a 13 amp fuse conforming to BS1362, and the fuse cover must be refitted. If the fuse cover is lost the plug must not be used until the correct replacement cover is fitted.

IMPORTANT - If the supply cord is damaged, it must only be replaced by a special cord available from the manufacturer or an authorised service agent.

1.5 Symbols & Markings

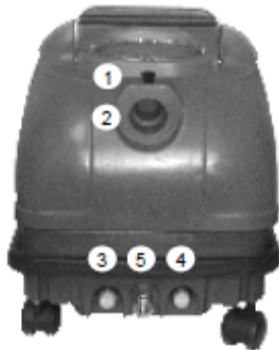


WARNING



Earth symbol

2 Controls



- 1 Hose release catch
- 2 Vacuum hose inlet
- 3 Solution pump switch
- 4 Vacuum switch
- 5 Solution outlet



- 6 Solution tank
- 7 Recovery tank
- 8 Recovery tank cover

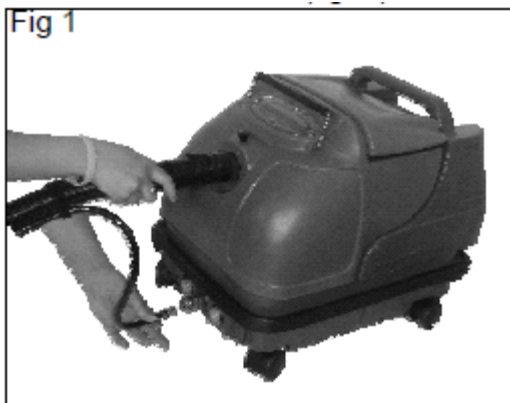
3 Preparing for use



WARNING - Before undertaking assembly or changing of accessories/tools switch off machine and unplug from the electricity supply.

- Make sure both tanks are clean before use.
- Connect the flexible vacuum hose onto the dirty water tank and the high pressure spray hose to the machine. (fig. 1)

Fig 1



- Connect the vacuum hose and the high pressure spray hose to the appropriate accessory.
- Fill the clean water tank with detergent and water. Take care to use correct dilution rate for the detergent. Never over fill.

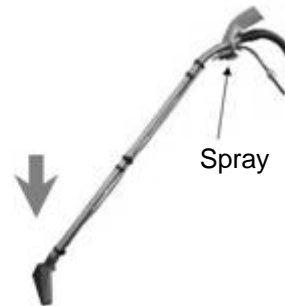
- Important - Take care to only use appropriate low-foam carpet cleaning chemicals with the machine. Incorrect chemicals could cause damage to the carpets being cleaned or cause the machine to malfunction.

4 Operation

4.1 Starting the machine

- Connect the cable to mains power.
- Switch on the unit spray or/and vacuum.
- Depressing the handle of the accessory sprays solution. Maintain a constant pressure of the accessory onto the surface to be cleaned. (fig. 2).

Fig 2



4.2 Using the machine

- To more thoroughly dry the surface being cleaned, complete the cleaning with a second pass with the vacuum (and no spray).
- Never soak the textile being cleaned while spraying.

4.3 Cleaning Carpet

Colour fastness - Before using cleaning solution or pre-spotter, test carpet for colour fastness on an inconspicuous area. Apply solution to a small piece of clean white material or tissue, and then rub on carpet vigorously. Excessive amounts of dye showing on the material indicate that the colours are not fast, and the carpet should not be wet cleaned.

- Move furniture around to give a clear working area. Cover bottoms of furniture legs where necessary (aluminium cooking foil is ideal). Pin up curtains and drapes.
- Vacuum carpet thoroughly to remove any residual dust or debris.
- Areas of heavy carpet soiling can be removed more easily if first treated with a concentrated cleaning solution or pre-spotting solution.
- Rate of cleaning will depend upon the thickness of the carpet and the degree of dirt in the area being cleaned.
- Do not clean any more than twice. Carpets may shrink if they are over-wet or not properly fixed down.

4.4 Cleaning Stairs



CAUTION - When cleaning on stairs exercise great care to ensure that machine is

stable and cannot overbalance, possibly causing injury to either operator or third party. Use the optional stair/upholstery tool for cleaning in place of the wand assembly.

4.5 Cleaning Upholstery

This is done in the same way as carpet cleaning except using the optional upholstery tool in place of the wand assembly. Cleaning is achieved using a gentle dragging motion of the upholstery tool over the material.

- An inconspicuous area of the item to be cleaned should always be tested for colour fastness prior to cleaning. Should doubt exist as to the suitability of the fabric for wet cleaning, the chemical manufacturer should be consulted for advice.
- Loose cushions should be removed and cleaned separately.
- Care should be taken to avoid over-wetting the fabric.

5 When Cleaning is Finished

5.1 Draining and Cleaning

- Before removing the spray hose, pressure in the system must be released. With the pump switched off, hold the spray nozzle over the recovery tank opening and depress the spray trigger until the remaining solution has been released. The spray hose can now be disconnected.
- After use check that both solution tanks are empty.
- Empty the clean water tank and rinse.
- Empty the recovery tank and rise clean.
- The clean water/solution tank can be emptied into the recovery tank by using the vacuum hose, and then emptied out.
- Rinse both tanks out with clean water before storing the machine.

5.2 Storage

- Always unplug, empty, wipe down and dry the machine after use.
- Wrap supply cord around the body of the machine, or coil and push under the handle, ensuring that the plug is not trailing on the floor. Store the machine in a dry indoor area only.

5.3 Maintenance



WARNING - Before undertaking maintenance operations or adjustments switch off machine and unplug from the electricity supply.

The machine requires minimum maintenance apart from the following checks by the operator.

- **Supply cord** - Regularly inspect sheath, plug and cord anchorage for damage or loose connection.
- **Solution tank** - Check filter is clean and undamaged. A damaged or missing filter must be replaced or damage to pump head and spray jet could occur.
- **Vacuum head** - Check and remove any debris or lint build-up from the head.
- **Spray jet** - Check jet for blockage and full spray pattern. Blow through jet to clean. **Do not** use a pin, as this could damage the jet.

IMPORTANT - All other servicing and repairs should only be performed by a Truvox engineer or Authorised Service Agent.

6 After Sales Service

Truvox machines are high quality machines that have been tested for safety by authorised technicians. It is always apparent that after longer working periods, electrical and mechanical components will show signs of wear and tear or ageing.

Under extreme or specialised conditions and/or insufficient maintenance, shorter maintenance intervals are necessary. Use only original Truvox spare parts. **Use of other spare parts will invalidate all warranty and liability claims.**

Should you require after sales service please contact the supplier from whom you purchased the machine, who will arrange service. Repairs and servicing of Truvox products should only be performed by trained staff. Improper repairs can cause considerable dangers to the user.

7 Guarantee

Your product is guaranteed for **two** year from the date of original purchase, or hire purchase, against defects in materials or workmanship during manufacture. Within the guarantee period we undertake at our discretion, to repair or replace free of charge to the purchaser, any part found to be defective, subject to the following conditions.

CONDITIONS

1. Claims made under the terms of the guarantee must be supported by the original invoice/bill of sale issued at the time of sale, or the machine Serial Number.
2. For claims under this guarantee contact the supplier from whom you purchased the product who will arrange the appropriate action. Do not initially return the product as this could result in transit damage.
3. Neither Truvox nor its distributors shall be liable for any incidental or consequential loss.
4. This guarantee is governed by the laws of England. This guarantee does not cover any of the following: Periodic maintenance, and repair or replacement of parts due to normal wear and tear.
5. This guarantee is governed by the laws of England. This guarantee does not cover any of the following: Periodic maintenance, and

repair or replacement of parts due to normal wear and tear.

- Damage caused by accident, misuse or neglect, or the fitting of other than genuine Truvox parts.
- Defects in other than genuine Truvox parts, or repairs, modifications or adjustments performed by other than a Truvox service engineer or authorised service agent.
- Costs and risks of transport relating directly or indirectly to the guarantee of this product.
- Consumable items and wear parts such as drive belts.

This guarantee does not affect your statutory rights, nor your rights against the supplier arising from their sales or purchase contract.

8 Waste Electrical & Electronic Equipment (WEEE)



Do not dispose of this device with unsorted waste. Improper disposal may be harmful to the environment and human health.

Please refer to your local waste authority for information on return and collection systems in your area.

9 Technical specification

All models: 230-240 V ~ 50 Hz, Class II construction. Enclosure to IPX4. Fitted with 10m supply cord and 13A fused plug.

Model		Hydromist 10	Hydromist 10 Heavy Duty	Hydromist 20 Heavy Duty
Code		HM10	HM10HD	HM20HD
Voltage	V	230	230	230
Pump type		magnet	diaphragm	diaphragm
Pump power	W	40	40	40
Pump pressure	Bar / psi	5/72.5	5/72.5	5/72.5
Flow rate	l/min	1.5	1.5	1.5
Vac hose length	m	3	3	3
Vac motor	W	1100	1100	1100
Water lift	mm / kPa	2300	2300	2300
Airflow	l/sec	46.1	46.1	46.1
Solution tank capacity	litre	10	10	20
Recovery tank capacity	litre	10	10	20
Sound pressure level	dB(A)	78	78	78
Size (L x W x H)	cm	61 x 37.5 x 43	61 x 37.5 x 43	61 x 37.5 x 54
Cable length	m	10	10	10
Weight empty	kg	15.8	14.4	16.4
Warranty		1 year		

Truvox International is a BSI Registered Company and our policy is one of continuous development. We reserve the right to change specifications without prior notification.

10 Accessories and Cleaning Chemicals

Accessory	Part no.	Usage
3 metre hose assembly (vac hose, solution hose and all connectors)	93-0125-0000	As supplied with HM10, HM10HD and HM20HD
Standard floor tool 3 part stainless tubes, polyethylene floor tool	93-0140-0000	As supplied with Hydromist 10
Heavy Duty Floor tool One piece stainless tube, metal floor tool	93-0142-0000	Optional tool for upholstery cleaning.
Standard Upholstery Tool - polyethylene	93-0142-0000	Optional tool for upholstery cleaning
Heavy Duty Upholstery tool - metal	93-0143-0000	Optional tool for upholstery cleaning
Hose bag	02-3588-0000	Bag for convenient and tidy storage of hose and upholstery tool.

Chemical	Bottle size	Bottles per case	Part No.	Usage
Hydromist Carpet Cleaning Solution	500ml	10	HMC01005	The quality way to beautify carpets and upholstery. Formulation lifts dirt and stains out of your carpets and helps prevent re-soiling. Leaves carpets and upholstery soft and fresh.
	1 litre	10	HMC01010	
	5 litre	4	HMC01050	
Hydromist Pre-spotter	500ml trigger spray	10	HM003005	Formulated to help remove stubborn stains from carpet and upholstery.

IMPORTANT: Genuine accessories and chemicals are only available from authorised Service Agents or the Truvox Customer Service Department.

11 Fault Diagnosis



WARNING - Before undertaking maintenance operations or adjustments switch off machine and unplug from the electricity supply

Problem	Reason	Remedy
The spray pump and vacuum does not work	<ul style="list-style-type: none"> Power failure 	<ul style="list-style-type: none"> Check the main fuse, the power supply cord and the plug
No spray or the spray is not even	<ul style="list-style-type: none"> Spray nozzle blocked Solution tank empty Solution feed filter blockage 	<ul style="list-style-type: none"> Check the spray pipe and nozzle. Is there water in the tank? If there is water in the tank, wait for a couple of seconds for the pump to build up pressure. If the tank is empty, fill it as indicated. The filter in the clean water tank, the pipe or the nozzle may be blocked. Switch off the unit and perform maintenance
The vacuum power falls.	<ul style="list-style-type: none"> The recovery tank may be full. 	<ul style="list-style-type: none"> Empty recovery tank.

Hydromist 10 Parts List

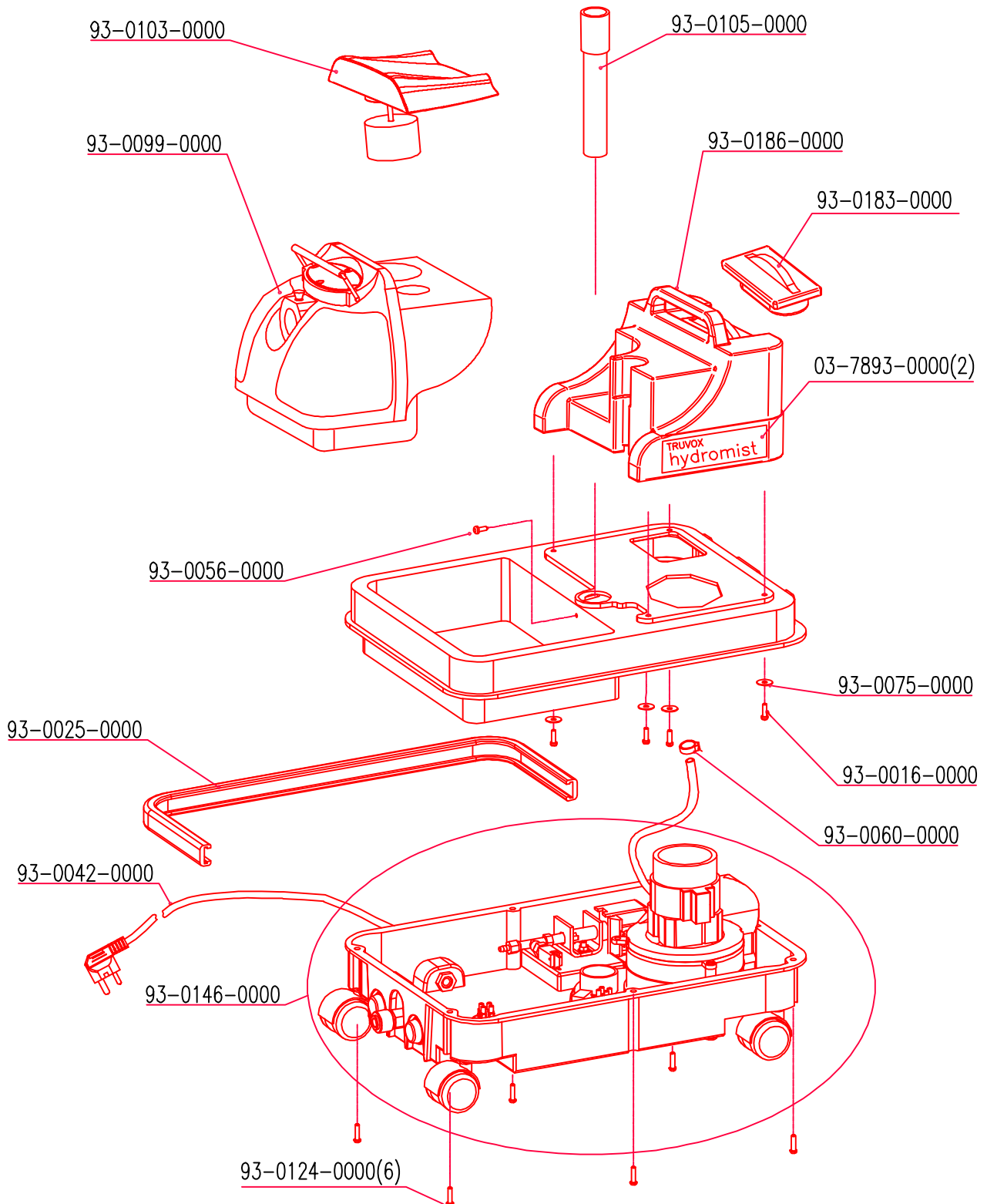
Model Ref.: HM10 Series B

Service Parts List Issue 2

23rd March 2010

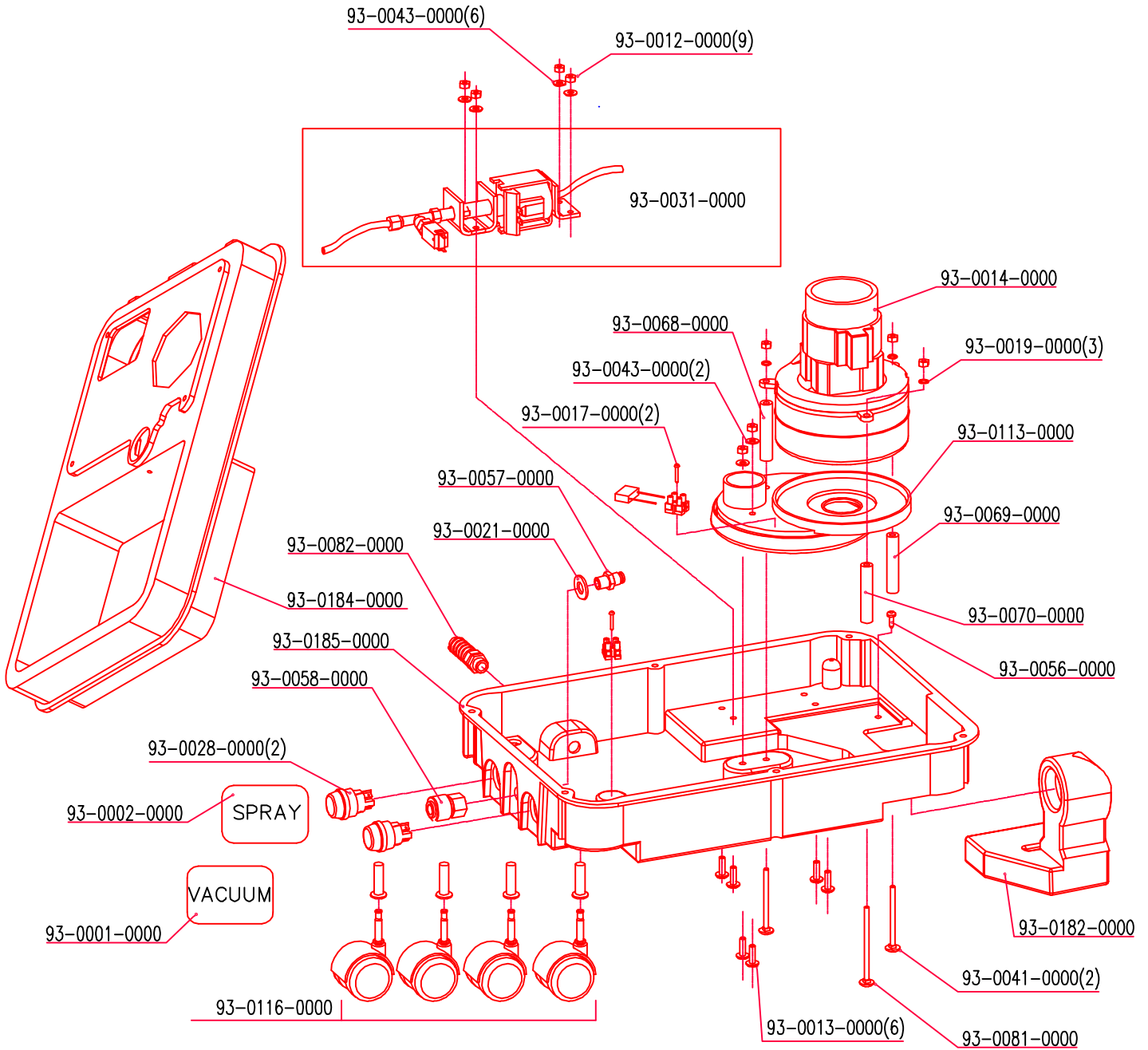
Part No.	Description	Qty
	93-0001-0000 Label (Vacuum)	1
	93-0002-0000 Label (Spray)	1
	93-0014-0000 Vacuum motor	1
	93-0021-0000 Water feed hose coupling flat washer	1
	93-0025-0000 Bumper strip	1
	93-0028-0000 Switch (Pump / Vacuum)	2
	93-0033-0000 Magnetic pump	1
	93-0182-0000 Exhaust moulding (Black RAL9005)	1
	93-0042-0000 Mains lead fitted with UK Plug	1
	93-0057-0000 Straight water feed connection	1
	93-0058-0000 Water feed hose coupling	1
	93-0078-0000 Magnetic pump and pressure switch wiring kit	1
	93-0183-0000 Solution tank cover (Black RAL9005)	1
	93-0184-0000 Base moulding top cover (Black RAL9005)	1
	93-0185-0000 Base moulding bottom cover (Black RAL9005)	1
	93-0105-0000 Airflow inlet pipe	1
	93-0116-0000 10 Litre castor kit (4off castors)	1
	93-0119-0000 Hydromist Base moulding fastener kit	1
	93-0126-0000 Magnetic pump hose kit	1
	93-0147-0000 Pressure switch	1
	93-0148-0000 Magnetic pump to pressure switch connecting kit	1
	93-0149-0000 HM10 Wiring kit	1
	93-0140-0000 Polyethylene floor tool with stainless steel tube	1
93-0103-0000	Recovery tank lid assembly (Includes the following parts)	1
	93-0084-0000 Recovery tank lid filter shaft	1
	93-0085-0000 Recovery tank lid gauze 5/10E stainless steel	1
	93-0086-0000 Recovery tank lid foam float	1
	93-0087-0000 Recovery tank lid M5 Nylon nut	1
	93-0095-0000 Recovery tank lid	1
	93-0097-0000 Recovery tank lid gasket	1
93-0099-0000	10 Litre Recovery tank assembly (Includes the following parts)	1
	03-7874-0000 Recovery tank inlet cover	1
	03-7893-0000 Recovery tank inlet cover seal	1
	93-0071-0000 M5x14 F ZN Screw	4
	93-0089-0000 Vacuum hose securing pin	1
	93-0092-0000 10 Litre Recovery tank	1
	93-0107-0000 Recovery tank handle assembly	1
93-0186-0000	10 Litre Solution tank assembly (Black RAL9005) (Includes the following parts)	1
	93-0022-0000 Solution tank filter	1
	93-0076-0000 Plastic elbow coupling 1/4 BSPT	1
	93-0187-0000 10 Litre Solution tank (Black RAL9005)	1
	93-0112-0000 Hydromist Label	2
93-0113-0000	Vacuum motor holder assembly (Includes the following parts)	1
	93-0020-0000 Rubber washer D.142x78mm EP.4mm	1
	93-0030-0000 Vacuum motor holder and gasket	1
93-0125-0000	Hydromist 3m hose assembly (Includes the following parts)	1
	93-0027-0000 3m Vacuum hose assembly	1
	93-0066-0000 3m Spray hose assembly	1
	93-0074-0000 Velcro strap 3off	1

Truvox International Ltd.,
 Third Avenue, Millbrook,
 Southampton. Hampshire.
 SO15 0LE.
 Service & Spares: 023 80706601
 Customer Services: 023 80706600
 General Enquiries: 023 80702200



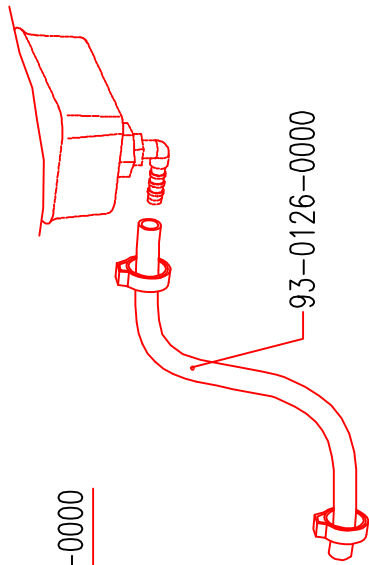
					SCALE	TITLE		
					NTS	BASIC UNIT 10L MAGNET 230V		
23.03.10		B	COLOUR CHANGE	MC	MC	CHECKED	PRODUCT	
10.11.05		A	NEW DRAWING	MC	MC	M.D.C.	DRAWING/PART No	
DATE	CRO No	ISS	REVISION RECORD	DR	CHK	DRN	93-0109-0000	
						M.D.C.	A4	
							SHEET 1 OF 1 SHEETS	

Truvox International Ltd.,
 Third Avenue, Millbrook,
 Southampton. Hampshire.
 SO15 0LE.
 Service & Spares: 023 80706601
 Customer Services: 023 80706600
 General Enquiries: 023 80702200

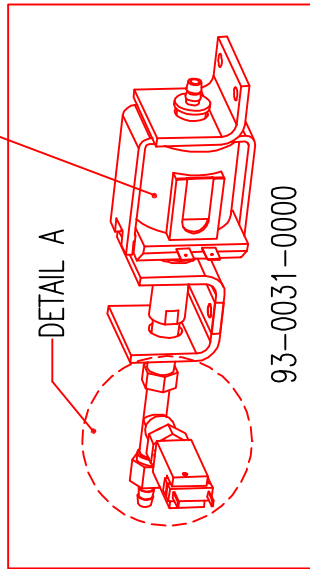


					SCALE	TITLE				
					NTS	BASE HYDROMIST 10 L MAGNETIC PUMP ASS.				
23.03.10		B	COLOUR CHANGE	MC	MC	CHECKED	PRODUCT	DRAWING/PART No	A4	SHEET 1 OF 2 SHEETS
1011.05		A	NEW DRAWING	MC	MC	M.D.C.	HM10	93-0146-0000		
DATE	CRO No	ISS	REVISION RECORD	DR	CHK	DRN				
						M.D.C.				

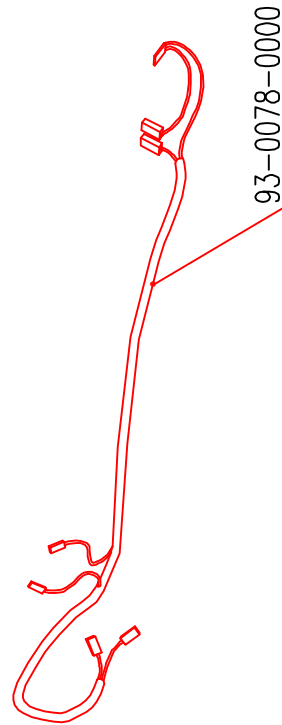
Truvox International Ltd.,
 Third Avenue, Millbrook,
 Southampton. Hampshire.
 SO15 0LE.
 Service & Spares: 023 80706601
 Customer Services: 023 80706600
 General Enquiries: 023 80702200



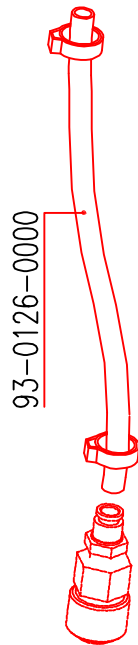
93-0033-0000



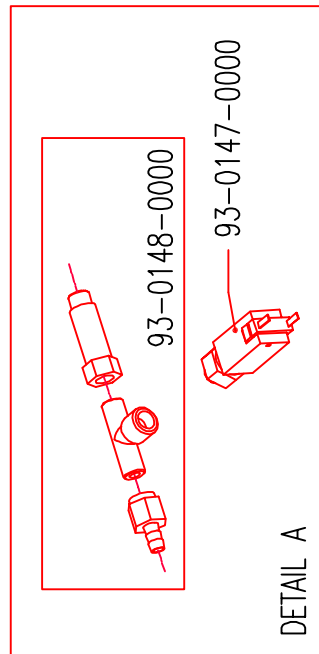
93-0031-0000



93-0078-0000



93-0126-0000



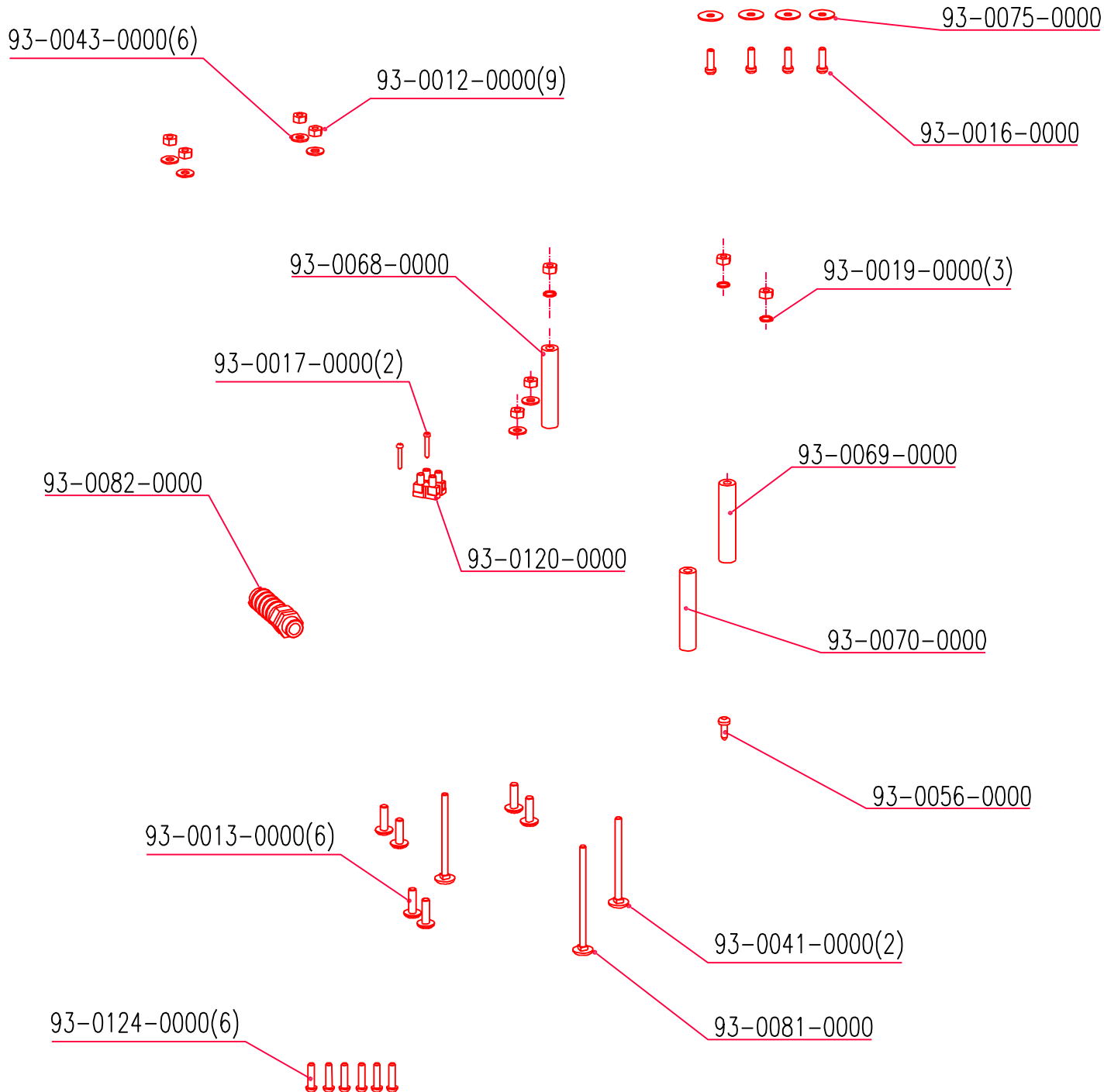
93-0148-0000

93-0147-0000

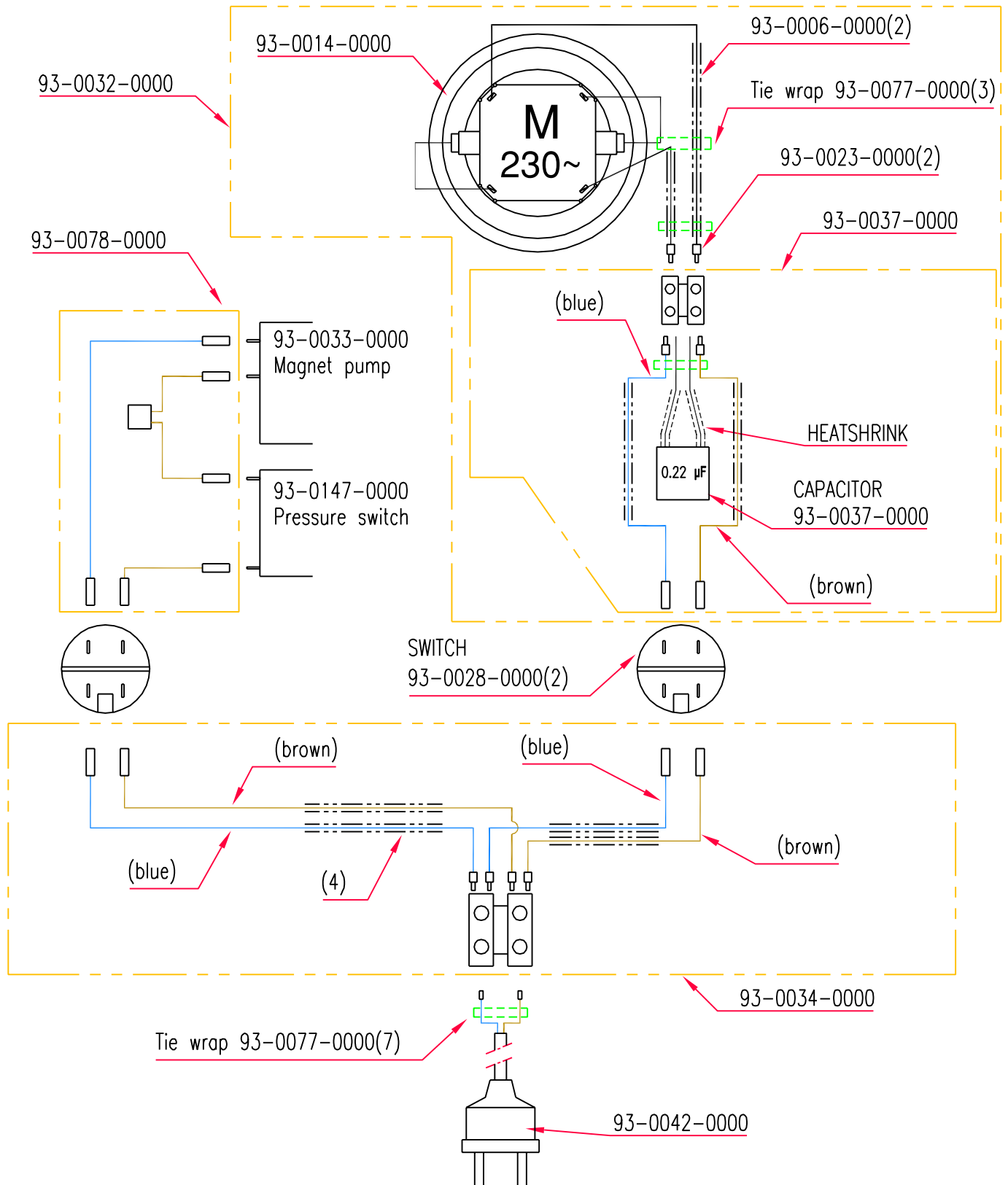
DETAIL A

					SCALE NTS	TITLE BASE HYDROMIST 10 L MAGNETIC PUMP ASS.					
23.03.10		B	COLOUR CHANGE	MC	MC	CHECKED M.D.C.	PRODUCT HM10		DRAWING/PART No 93-0146-0000-2	A4	SHEET 2 OF 2 SHEETS
10.11.05		A	NEW DRAWING	MC	MC	DRN M.D.C.					
DATE	CRO No	ISS	REVISION RECORD	DR	CHK						

Truvox International Ltd.,
 Third Avenue, Millbrook,
 Southampton. Hampshire.
 SO15 0LE.
 Service & Spares: 023 80706601
 Customer Services: 023 80706600
 General Enquiries: 023 80702200



					SCALE NTS	TITLE HYDROMIST BASE MOULDING FASTENER KIT			
					CHECKED M.D.C.	PRODUCT	DRAWING/PART No	A4	SHEET 1 OF 1 SHEETS
10.11.05		A	NEW DRAWING	MC MC	DRN M.D.C.	HM10,10HD & 20HD	93-0119-0000		
DATE	CRO No	ISS	REVISION RECORD	DR	CHK				



				SCALE	NTS		TITLE		
				CHECKED	M.D.C.		HYDROMIST HM10 WIRING KIT		
10.11.05	A	NEW DRAWING	MC	MC	PRODUCT	DRAWING/PART No		A4	SHEET 1 OF 1 SHEETS
DATE	CRO No	ISS	REVISION RECORD	DR	CHK	HM10	93-0149-0000		

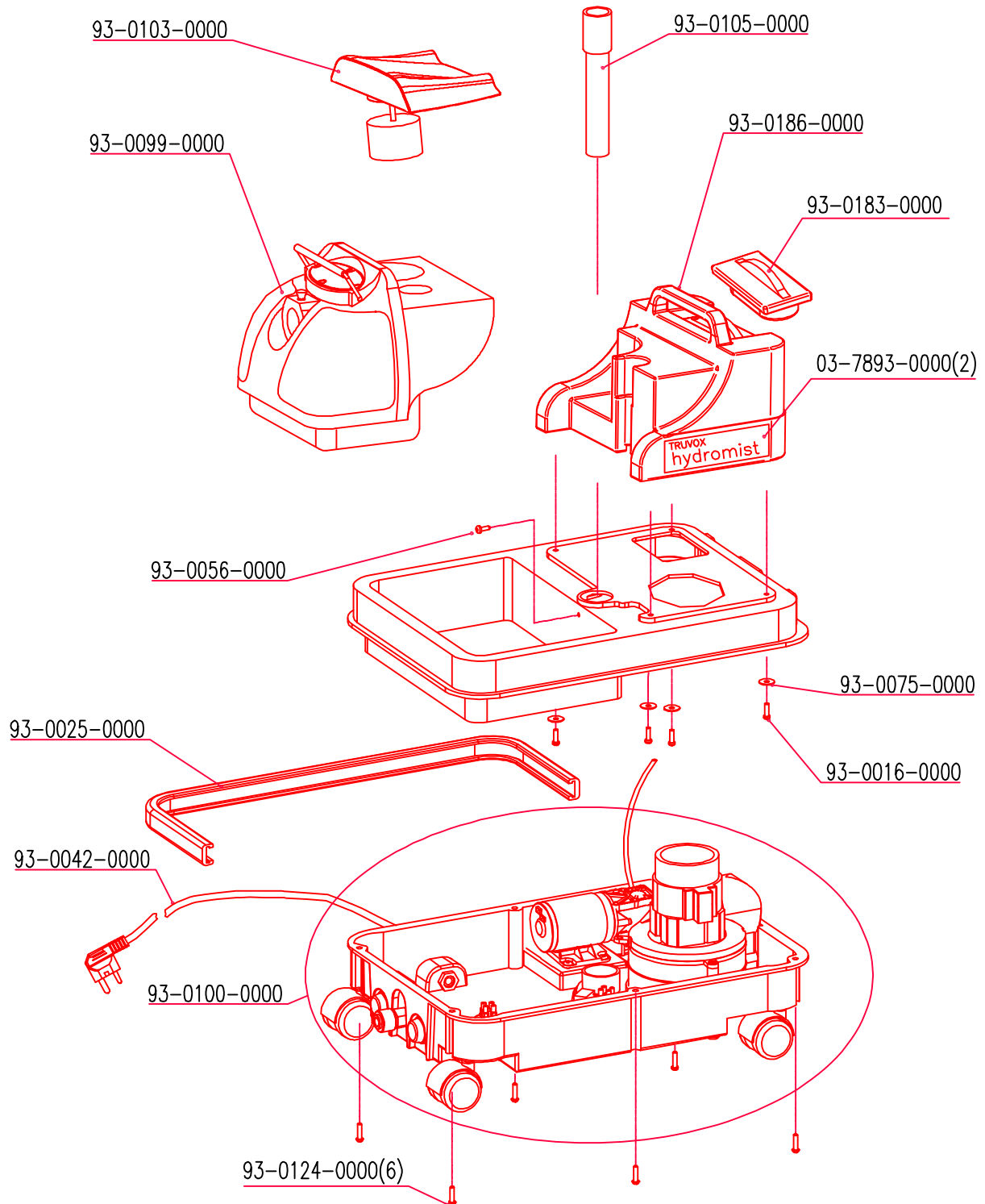
Hydromist 10HD Parts List
Model Ref.: HM10HD Series B

Service Parts List Issue 2

23rd March 2010

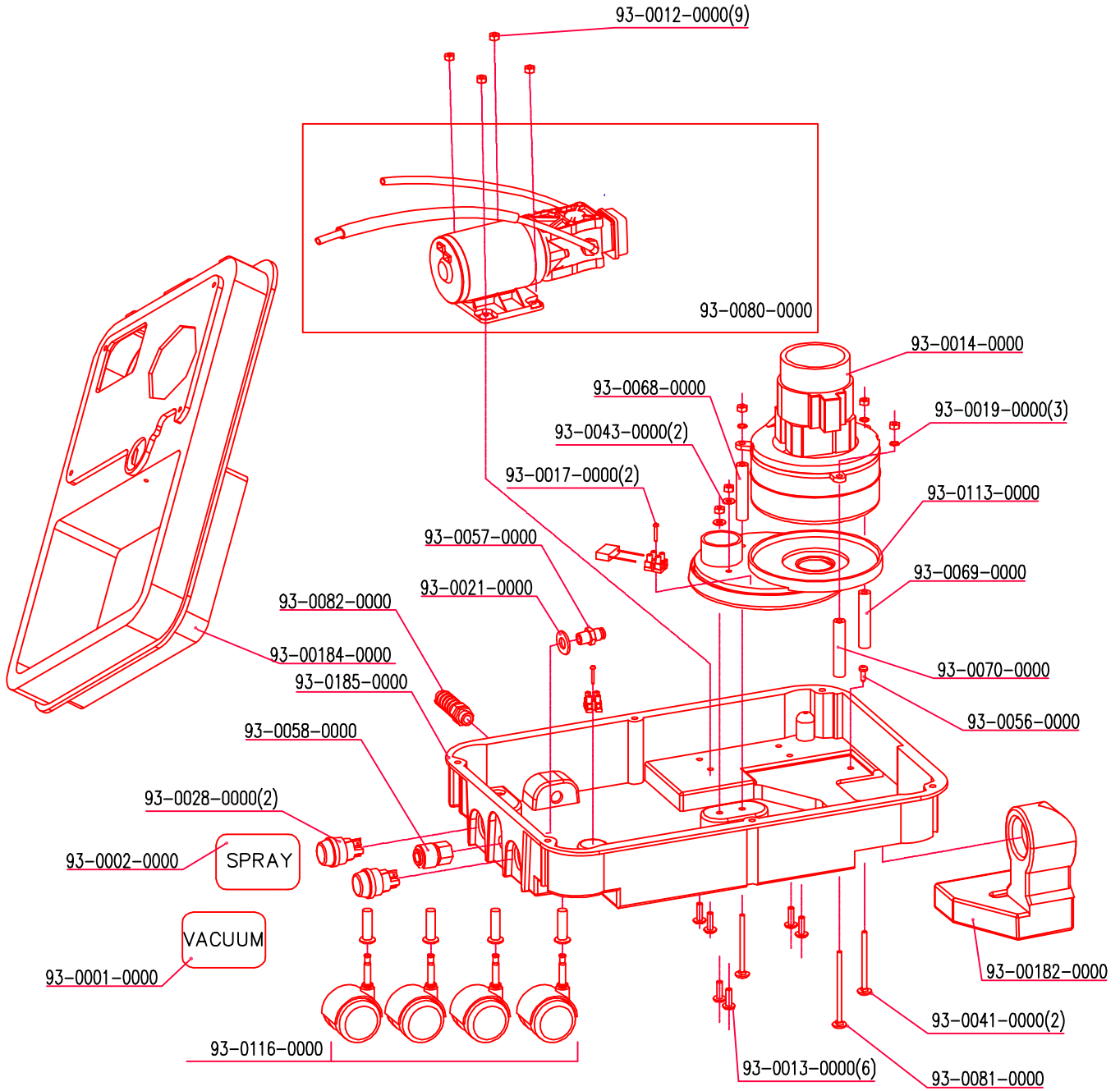
Part No.	Description	Qty
93-0001-0000	Label (Vacuum)	1
93-0002-0000	Label (Spray)	1
93-0007-0000	Suppressor wiring	1
93-0008-0000	Diaphragm Pump 230v 40W	1
93-0009-0000	Brown wire connection	1
93-0014-0000	Vacuum motor	1
93-0021-0000	Water feed hose coupling flat washer	1
93-0025-0000	Bumper strip	1
93-0028-0000	Switch (Pump / Vacuum)	2
93-0182-0000	Exhaust moulding (Black RAL9005)	1
93-0042-0000	Mains lead fitted with UK Plug	1
93-0045-0000	Diaphragm pump hose	2
93-0057-0000	Straight water feed connection	1
93-0058-0000	Water feed hose coupling	1
93-0183-0000	Solution tank cover (Black RAL9005)	1
93-0184-0000	Base moulding top cover (Black RAL9005)	1
93-0185-0000	Base moulding bottom cover (Black RAL9005)	1
93-0105-0000	Airflow inlet pipe	1
93-0116-0000	10 Litre castor kit (4off castors)	1
93-0119-0000	Hydromist Base moulding fastener kit	1
93-0127-0000	Diaphragm Pump Motor	1
93-0150-0000	HM10HD and HM20HD Wiring kit	1
93-0141-0000	Metal floor tool with stainless steel tube	1
93-0103-0000	Recovery tank lid assembly (Includes the following parts)	1
	93-0084-0000 Recovery tank lid filter shaft	1
	93-0085-0000 Recovery tank lid gauze 5/10E stainless steel	1
	93-0086-0000 Recovery tank lid foam float	1
	93-0087-0000 Recovery tank lid M5 Nylon nut	1
	93-0095-0000 Recovery tank lid	1
	93-0097-0000 Recovery tank lid gasket	1
93-0099-0000	10 Litre Recovery tank assembly (Includes the following parts)	1
	03-7874-0020 Recovery tank inlet cover	1
	03-7893-0000 Recovery tank inlet cover seal	1
	93-0071-0000 M5x14 F ZN Screw	4
	93-0089-0000 Vacuum hose securing pin	1
	93-0092-0000 10 Litre Recovery tank	1
	93-0107-0000 Recovery tank handle assembly	1
93-0186-0000	10 Litre Solution tank assembly (Includes the following parts)	1
	93-0022-0000 Solution tank filter	1
	93-0076-0000 Plastic elbow coupling 1/4 BSPT	1
	93-0187-0000 10 Litre Solution tank	1
	93-0112-0000 Hydromist Label	2
93-0113-0000	Vacuum motor holder assembly (Includes the following parts)	1
	93-0020-0000 Rubber washer D.142x78mm EP.4mm	1
	93-0030-0000 Vacuum motor holder and gasket	1
93-0125-0000	Hydromist 3m hose assembly (made up of the following parts)	1
	93-0027-0000 3m Vacuum hose assembly	1
	93-0066-0000 3m Spray hose assembly	1
	93-0074-0000 Velcro strap 3off	1

Truvox International Ltd.,
 Third Avenue, Millbrook,
 Southampton. Hampshire.
 SO15 0LE.
 Service & Spares: 023 80706601
 Customer Services: 023 80706600
 General Enquiries: 023 80702200



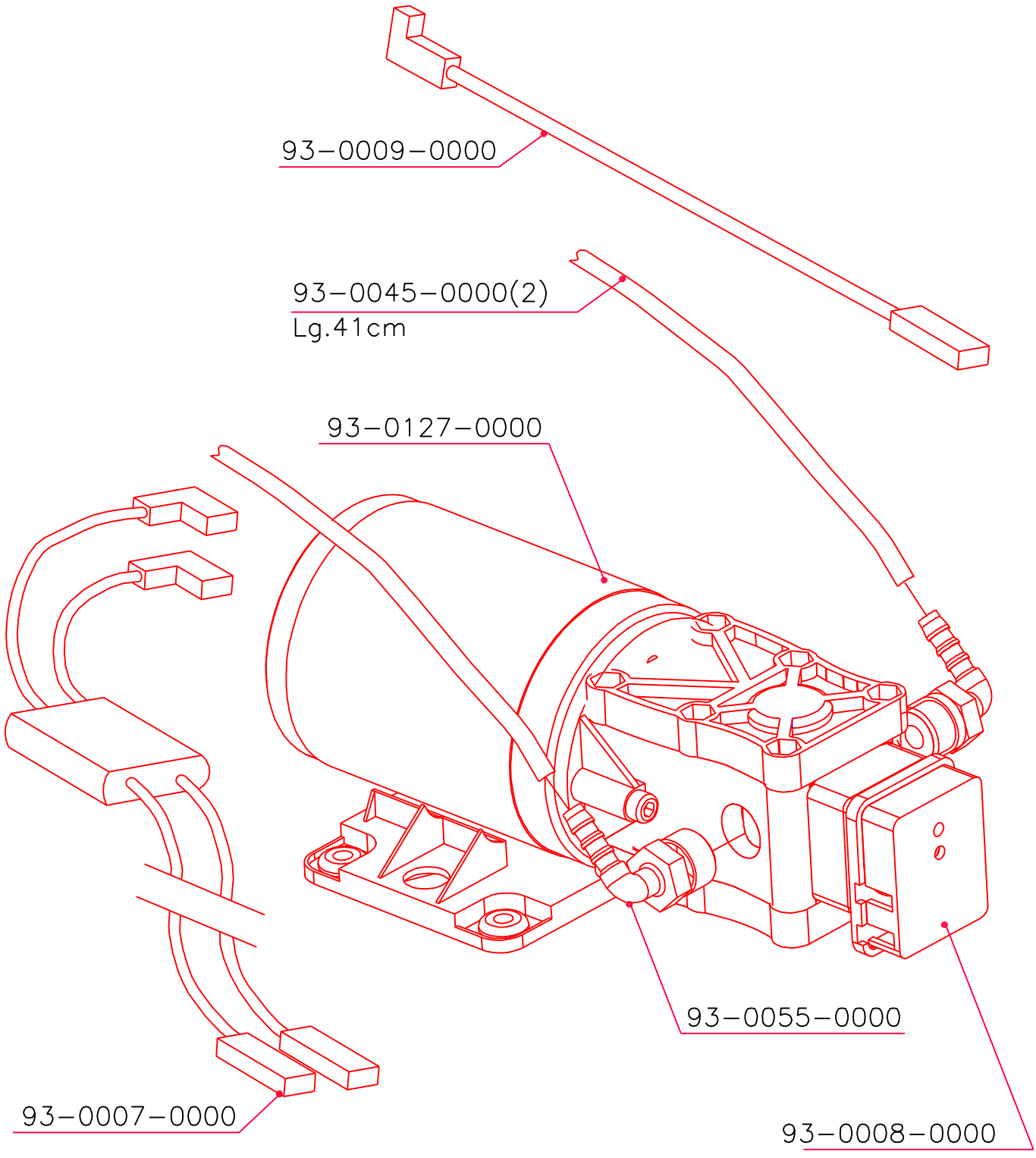
					SCALE	TITLE				
					NTS	BASIC UNIT 10L ES PUMP 230V				
23.03.10		B	COLOUR CHANGE	MC	MC	CHECKED	PRODUCT	DRAWING/PART No	A4	SHEET 1 OF 1 SHEETS
10.11.05		A	NEW DRAWING	MC	MC	DRN	HM10HD	93-0108-0000		
DATE	CRO No	ISS	REVISION RECORD	DR	CHK	M.D.C.				

Truvox International Ltd.,
 Third Avenue, Millbrook,
 Southampton. Hampshire.
 SO15 0LE.
 Service & Spares: 023 80706601
 Customer Services: 023 80706600
 General Enquiries: 023 80702200



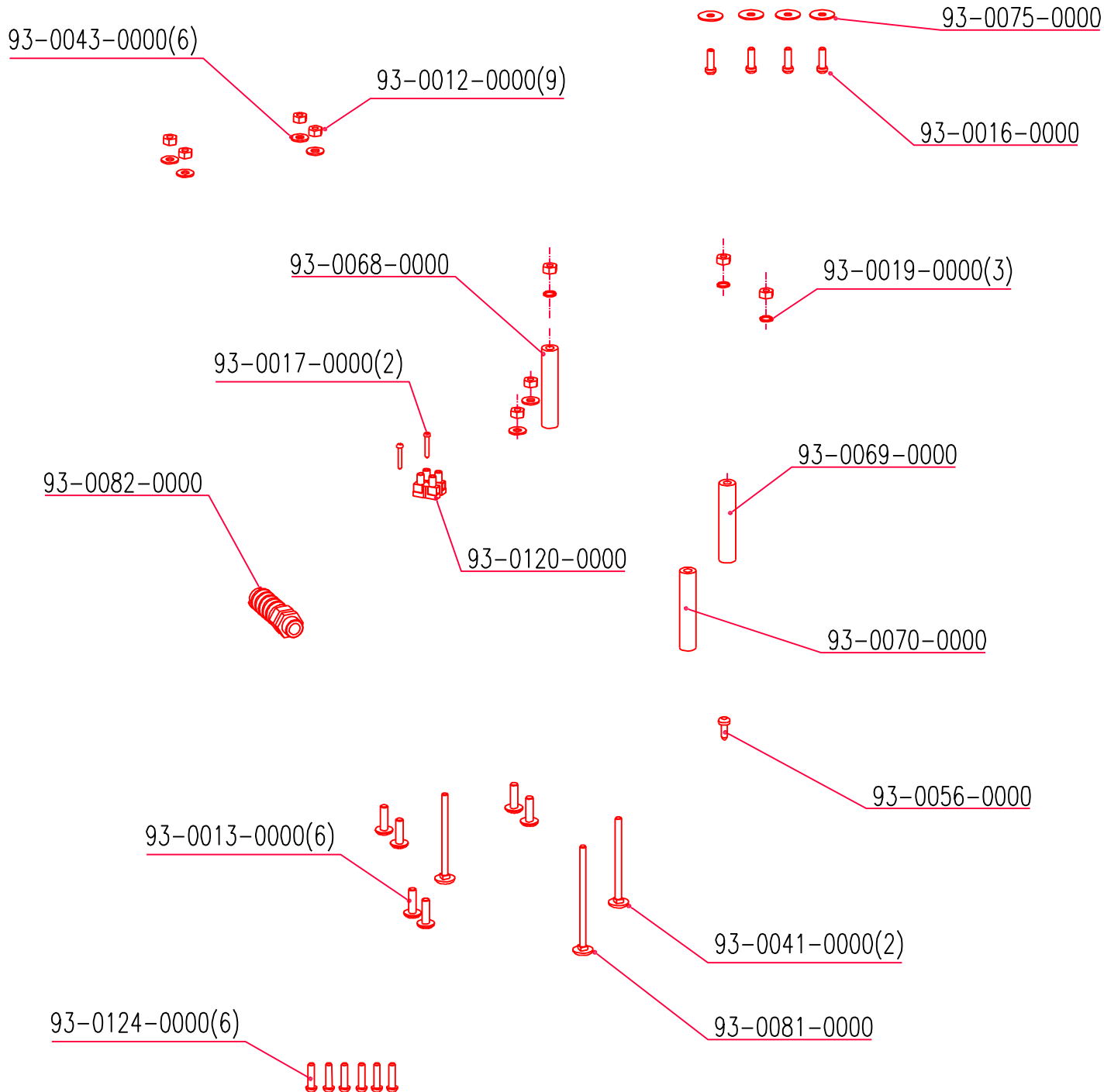
					SCALE NTS	TITLE BASE HYDROMIST 10 L ASS.			
23.03.10		B	COLOUR CHANGE	MC	MC	CHECKED M.D.C.	PRODUCT HM10HD	DRAWING/PART No 93-0100-0000	A4 SHEET 1 OF 1 SHEETS
1011.05		A	NEW DRAWING	MC	MC	DRN M.D.C.			
DATE	CRO No	ISS	REVISION RECORD	DR	CHK				

Truvox International Ltd.,
 Third Avenue, Millbrook,
 Southampton. Hampshire.
 SO15 0LE.
 Service & Spares: 023 80706601
 Customer Services: 023 80706600
 General Enquiries: 023 80702200

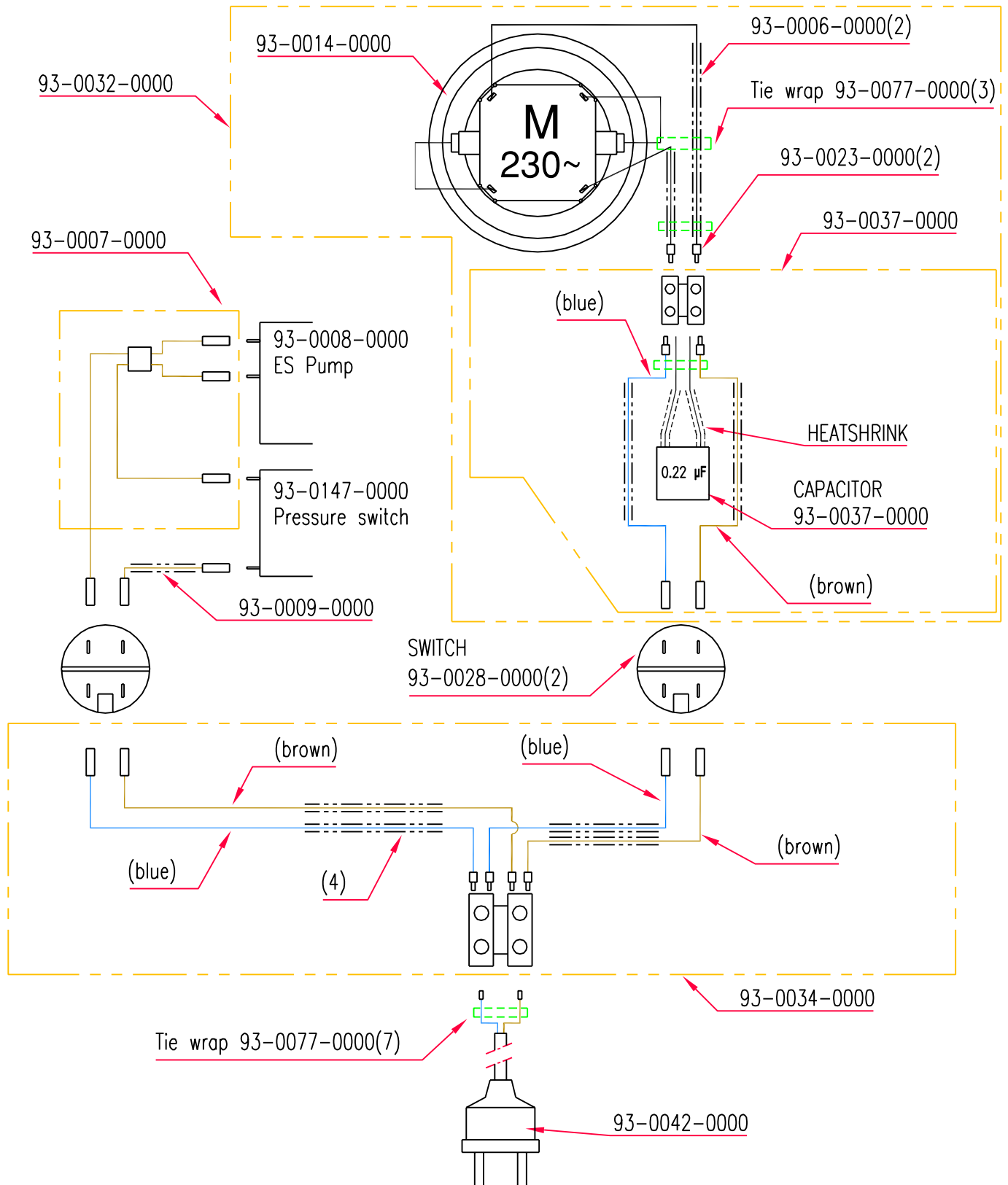


					SCALE	TITLE					
					NTS	COMPLETE PUMP ES95 145 230V					
					CHECKED	PRODUCT		DRAWING/PART No		A4	SHEET 1 OF 1 SHEETS
10.11.05		A	NEW DRAWING	MC	M.D.C.	HM10HD & HM20HD	93-0080-0000				
DATE	CRO No	ISS	REVISION RECORD	DR	CHK	DRN					
						M.D.C.					

Truvox International Ltd.,
 Third Avenue, Millbrook,
 Southampton. Hampshire.
 SO15 0LE.
 Service & Spares: 023 80706601
 Customer Services: 023 80706600
 General Enquiries: 023 80702200



					SCALE NTS	TITLE HYDROMIST BASE MOULDING FASTENER KIT			
					CHECKED M.D.C.	PRODUCT	DRAWING/PART No	A4	SHEET 1 OF 1 SHEETS
10.11.05		A	NEW DRAWING	MC	MC	HM10,10HD & 20HD	93-0119-0000		
DATE	CRO No	ISS	REVISION RECORD	DR	CHK	DRN M.D.C.			



				SCALE	TITLE			
				NTS	HYDROMIST HM10HD & 20HD WIRING KIT			
				CHECKED	PRODUCT		DRAWING/PART No	
				M.D.C.	HM10HD & 20HD		93-0150-0000	
10.11.05	A	NEW DRAWING	MC MC	DRN			A4	SHEET 1 OF 1 SHEETS
DATE	CRO No	ISS	REVISION RECORD	DR	CHK			

Hydromist 20HD Parts List

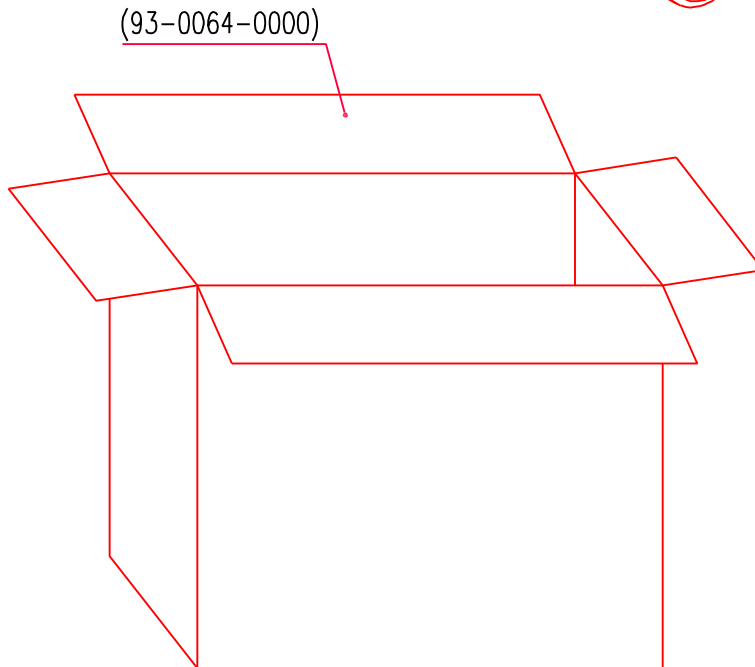
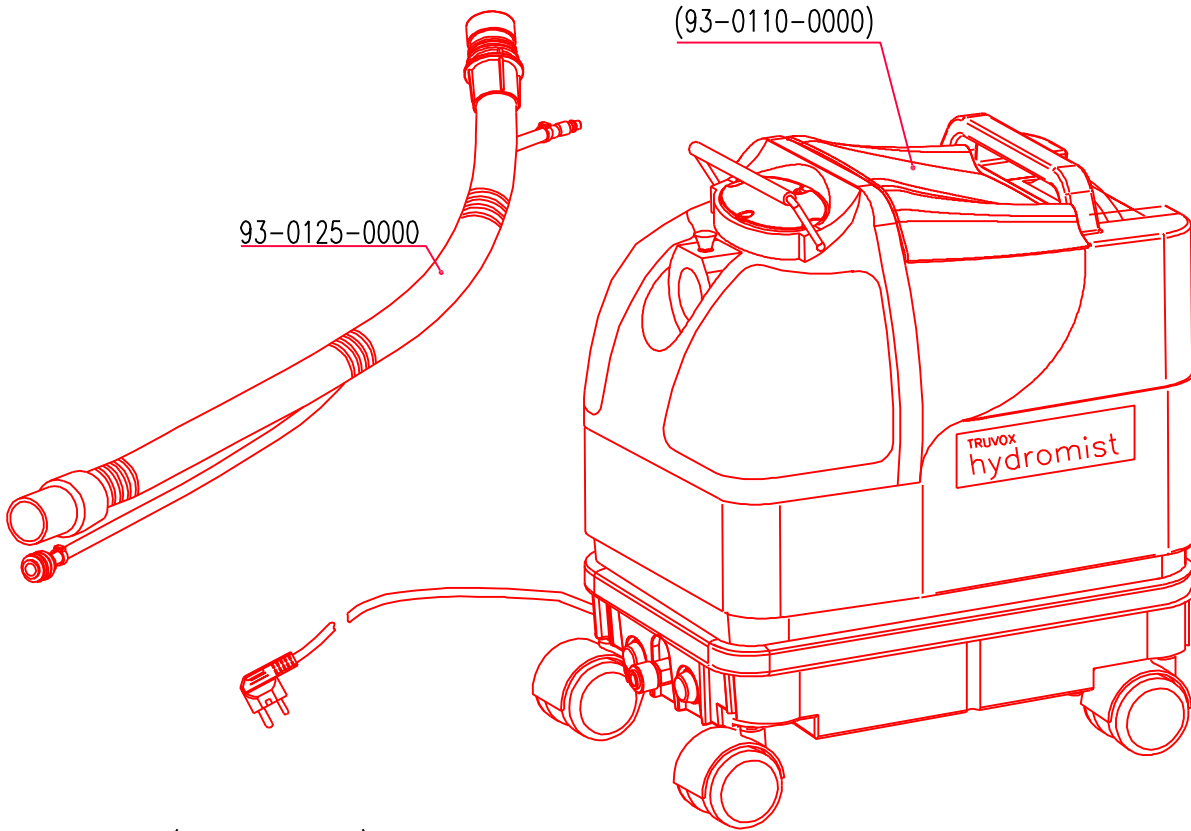
Model Ref.: HM20HD Series B

Service Parts List Issue 2

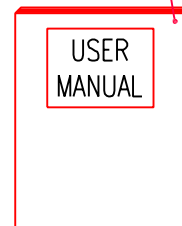
23rd March 2010

Part No.	Description	Qty
93-0001-0000	Label (Vacuum)	1
93-0002-0000	Label (Spray)	1
93-0007-0000	Suppressor wiring	1
93-0008-0000	Diaphragm Pump 230v 40W	1
93-0009-0000	Brown wire connection	1
93-0014-0000	Vacuum motor	1
93-0021-0000	Water feed hose coupling flat washer	1
93-0025-0000	Bumper strip	1
93-0028-0000	Switch (Pump / Vacuum)	2
93-0182-0000	Exhaust moulding (Black RAL9005)	1
93-0042-0000	Mains lead fitted with UK Plug	1
93-0045-0000	Diaphragm pump hose	2
93-0057-0000	Straight water feed connection	1
93-0058-0000	Water feed hose coupling	1
93-0183-0000	Solution tank cover (Black RAL9005)	1
93-0184-0000	Base moulding top cover (Black RAL9005)	1
93-0185-0000	Base moulding bottom cover (Black RAL9005)	1
93-0106-0000	Airflow inlet pipe	1
93-0119-0000	Hydromist Base moulding fastener kit	1
93-0121-0000	20 Litre castor kit (4off castors)	1
93-0127-0000	Diaphragm Pump Motor	1
93-0150-0000	HM10HD and HM20HD Wiring kit	1
93-0141-0000	Metal floor tool with stainless steel tube	1
93-0103-0000	Recovery tank lid assembly (Includes the following parts)	1
93-0084-0000	Recovery tank lid filter shaft	1
93-0085-0000	Recovery tank lid gauze 5/10E stainless steel	1
93-0086-0000	Recovery tank lid foam float	1
93-0087-0000	Recovery tank lid M5 Nylon nut	1
93-0095-0000	Recovery tank lid	1
93-0097-0000	Recovery tank lid gasket	1
93-0102-0000	20 Litre Recovery tank assembly (Includes the following parts)	1
03-7874-0000	Recovery tank inlet cover	1
03-7893-0000	Recovery tank inlet cover seal	1
93-0071-0000	M5x14 F ZN Screw	4
93-0089-0000	Vacuum hose securing pin	1
93-0094-0000	20 Litre Recovery tank	1
93-0107-0000	Recovery tank handle assembly	1
93-0188-0000	20 Litre Solution tank assembly (Includes the following parts)	1
93-0022-0000	Solution tank filter	1
93-0076-0000	Plastic elbow coupling 1/4 BSPT	1
93-0189-0000	20 Litre Solution tank (Black RAL9005)	1
93-0112-0000	Hydromist Label	2
93-0113-0000	Vacuum motor holder assembly (Includes the following parts)	1
93-0020-0000	Rubber washer D.142x78mm EP.4mm	1
93-0030-0000	Vacuum motor holder and gasket	1
93-0125-0000	Hydromist 3m hose assembly (Includes the following parts)	1
93-0027-0000	3m Vacuum hose assembly	1
93-0066-0000	3m Spray hose assembly	1
93-0074-0000	Velcro strap 3off	1

Truvox International Ltd.,
 Third Avenue, Millbrook,
 Southampton. Hampshire.
 SO15 0LE.
 Service & Spares: 023 80706601
 Customer Services: 023 80706600
 General Enquiries: 023 80702200

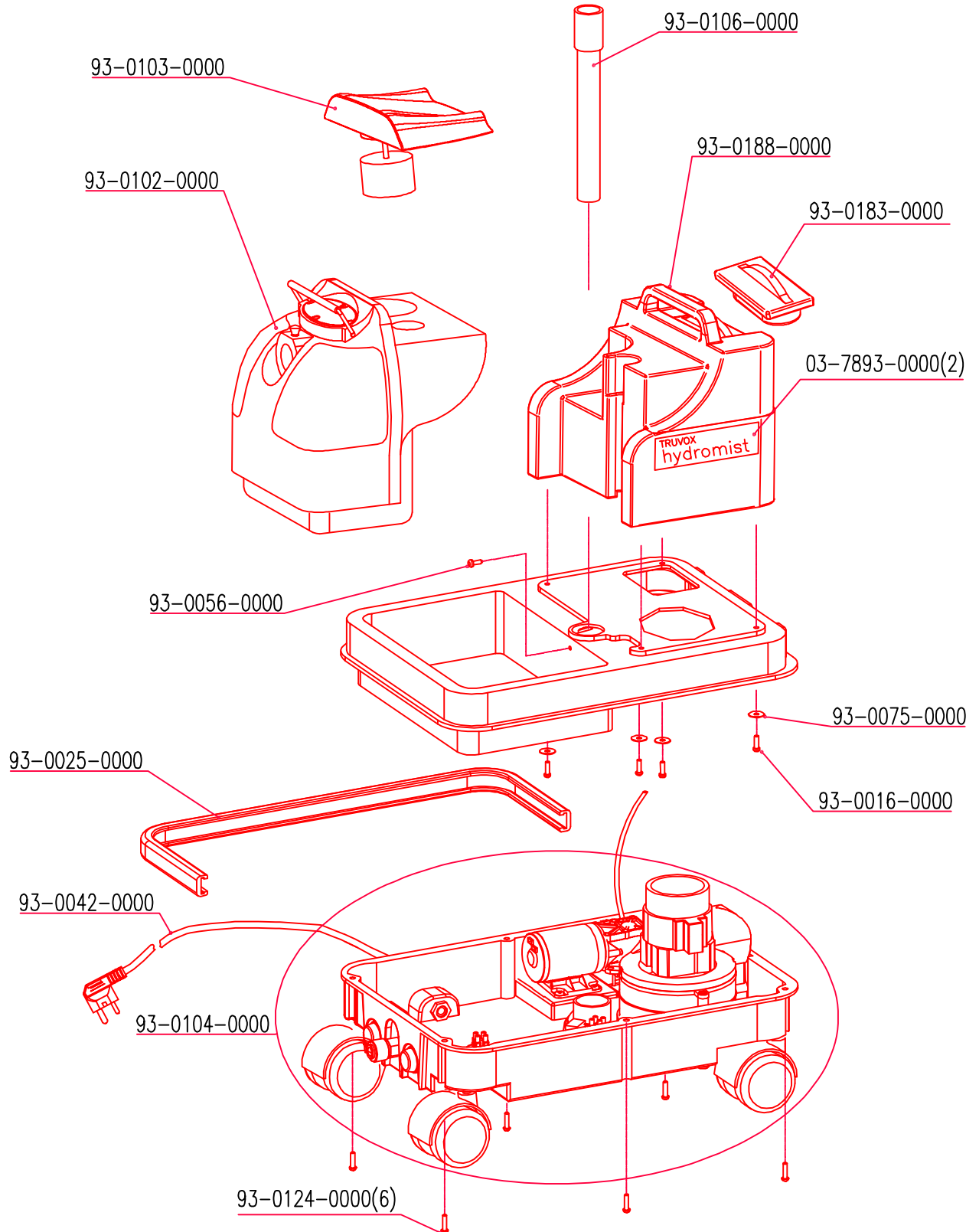


(03-8015-0000)



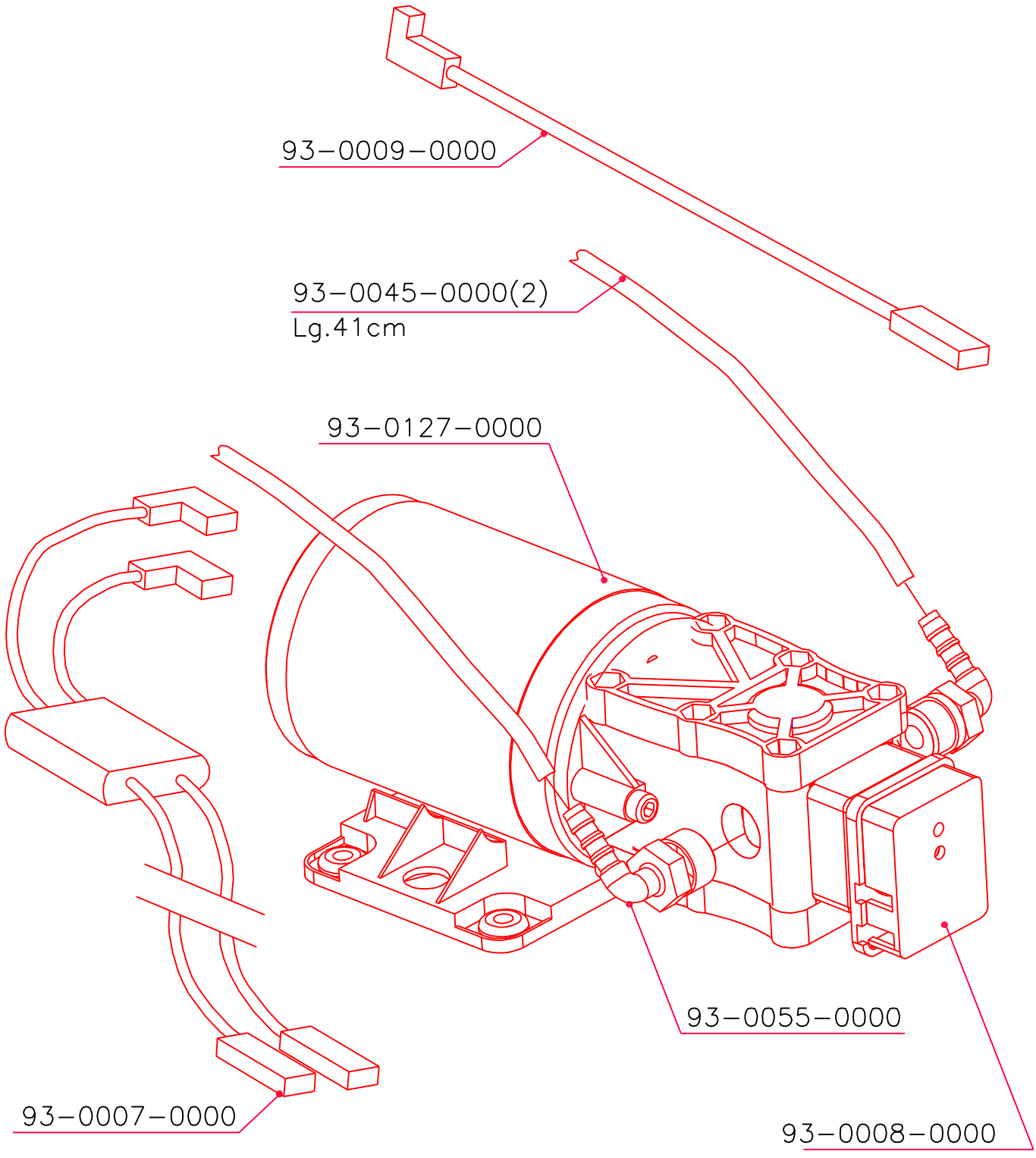
					SCALE NTS	TITLE HYDROMIST HM20HD		
					CHECKED M.D.C.	PRODUCT	DRAWING/PART No	
10.11.05		A	NEW DRAWING	MC	MC	HM20HD	HM20HD	A4
DATE	CRO No	ISS	REVISION RECORD	DR	CHK			SHEET 1 OF 1 SHEETS

Truvox International Ltd.,
 Third Avenue, Millbrook,
 Southampton. Hampshire.
 SO15 0LE.
 Service & Spares: 023 80706601
 Customer Services: 023 80706600
 General Enquiries: 023 80702200



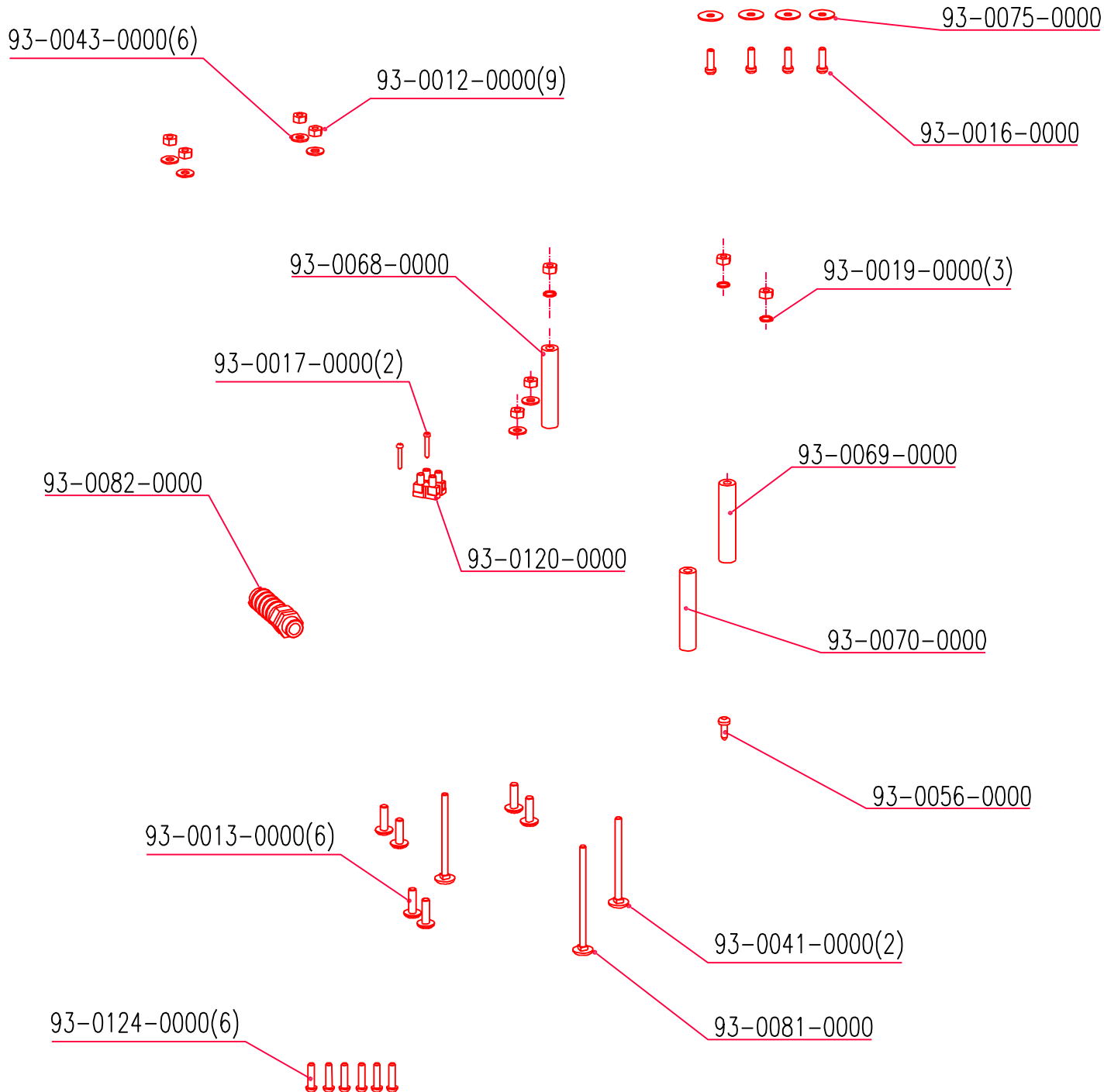
					SCALE	TITLE				
					NTS	BASIC UNIT 20L ES PUMP 230V				
23.03.10		B	COLOUR CHANGE	MC	MC	CHECKED	PRODUCT	DRAWING/PART No	A4	SHEET 1 OF 1 SHEETS
10.11.05		A	NEW DRAWING	MC	MC	M.D.C.	HM20HD	93-0110-0000		
DATE	CRO No	ISS	REVISION RECORD	DR	CHK	DRN				
						M.D.C.				

Truvox International Ltd.,
 Third Avenue, Millbrook,
 Southampton. Hampshire.
 SO15 0LE.
 Service & Spares: 023 80706601
 Customer Services: 023 80706600
 General Enquiries: 023 80702200

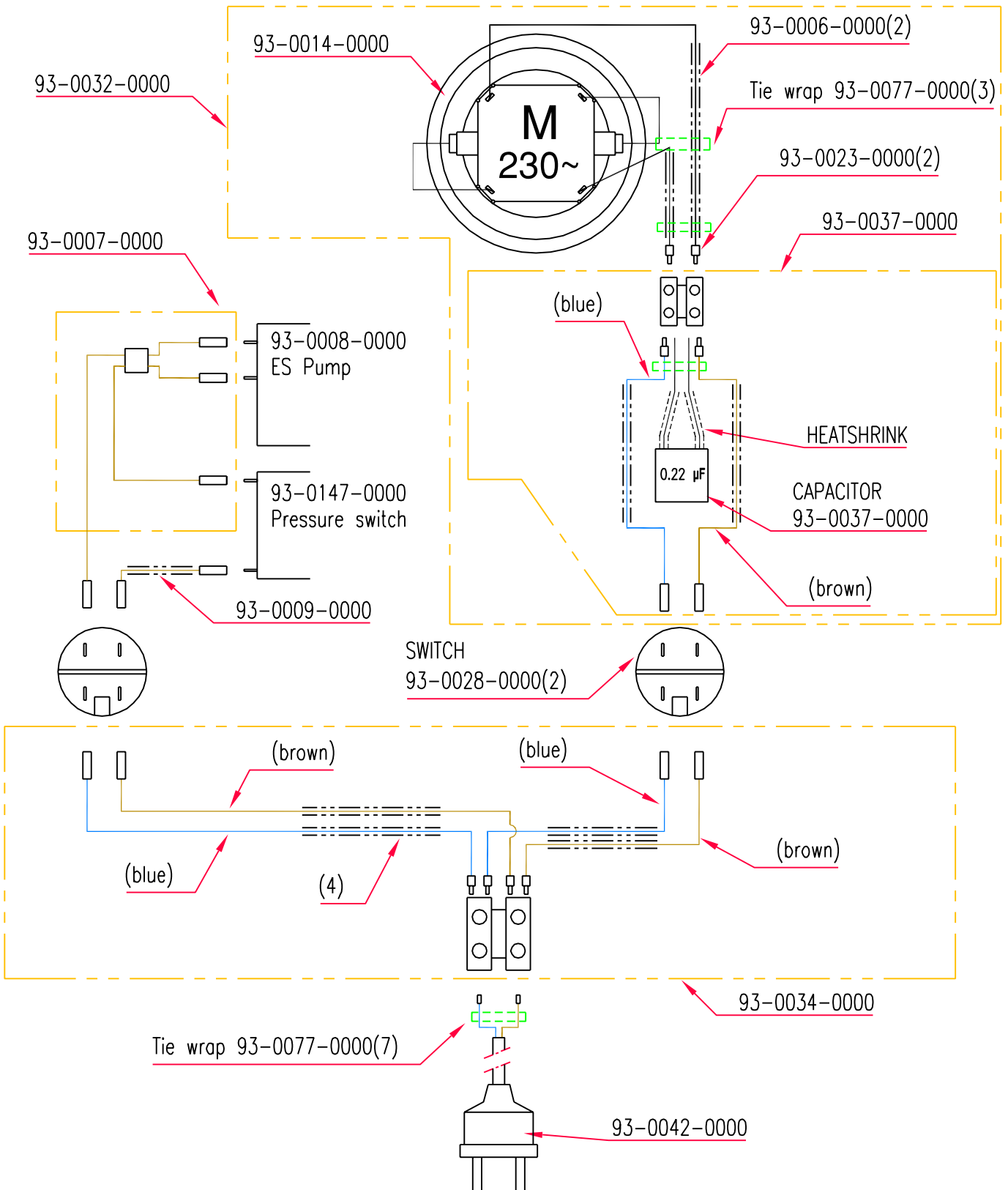


					SCALE	TITLE					
					NTS	COMPLETE PUMP ES95 145 230V					
					CHECKED	PRODUCT		DRAWING/PART No		A4	SHEET 1 OF 1 SHEETS
10.11.05		A	NEW DRAWING	MC	M.D.C.	HM10HD & HM20HD		93-0080-0000			
DATE	CRO No	ISS	REVISION RECORD	DR	CHK	DRN					
						M.D.C.					

Truvox International Ltd.,
 Third Avenue, Millbrook,
 Southampton. Hampshire.
 SO15 0LE.
 Service & Spares: 023 80706601
 Customer Services: 023 80706600
 General Enquiries: 023 80702200



					SCALE NTS	TITLE HYDROMIST BASE MOULDING FASTENER KIT		
					CHECKED M.D.C.	PRODUCT	DRAWING/PART No	A4
10.11.05		A	NEW DRAWING	MC MC	DRN M.D.C.	HM10,10HD & 20HD	93-0119-0000	
DATE	CRO No	ISS	REVISION RECORD	DR	CHK			



				SCALE	TITLE			
				NTS	HYDROMIST HM10HD & 20HD WIRING KIT			
				CHECKED	PRODUCT		DRAWING/PART No	
				M.D.C.	HM10HD & 20HD		93-0150-0000	
10.11.05	A	NEW DRAWING	MC MC	DRN			A4	SHEET 1 OF 1 SHEETS
DATE	CRO No	ISS	REVISION RECORD	DR	CHK			

13 Declaration of Conformity

Declaration of Conformity

We, Truvox International Ltd.

of Third Avenue, Millbrook,
Southampton, Hampshire
England
SO15 0LE

declare that the machinery

Make : Carpet Soil Extraction Machines
Type : Hydromist
Model : HM10..., HM10HD..., HM20HD...

Serial Number : from 01000
Year of Construction : 2010

has been manufactured using the following transposed harmonised European Standards and technical specifications.

Ref No	Title
2006/42/EC	Machinery Directive and subsequent amendments
2006/95/EC	The Low Voltage Directive and subsequent amendments
BS EN 60335-1	
BS EN 60335-2-68	
2004/108/EC	The EMC Directive and subsequent amendments
EN61000-3-2	
EN61000-3-3	
EN55014-1	
EN55014-2	

Signed in : SOUTHAMPTON, England

on the 29th day of December 2009

Signature :



Name : David Overall
Position : Managing Director

Technical file: Hydromist10/20 Iss. 1
Mark Campbell, Product Support Manager

Authorised dealer:

Truvox International Limited
Third Avenue, Millbrook, Southampton, Hampshire SO15 0LE, England
Tel: +44 (0) 23 8070 2200 Fax: +44 (0) 23 8070 5001
e-mail: truvox@truvox.com Web: www.truvox.com

