

SAMSUNG

High-Resolution Image Real-time Recording



Digital Video Recorder

SVR-3200/1680/1660/1645/960/945 User Manual

Thank you for choosing Samsung Digital Video Recorder.
Before connecting or operating this product,
please read these instructions carefully and save this manual for future use.

ENGLISH

Introduction

Thank you for choosing Samsung DVR products.

This is the user manual for SVR-3200, SVR-1680, SVR-1660, SVR-1645, SVR-960, SVR-945. Before installing or operating this product, please familiarize yourself with this user manual and other manuals referenced by this manual.

This user manual and the software and hardware described here are protected by the copyright law. Therefore, with the exception of copying for general use within the copyright law, copying and reprinting the user manual, either partially or in its entirety, or translating it into another language without the consent of Samsung Techwin, Inc. is prohibited.

This specification may be changed without prior notice for improvement of product performance.

Product warranty and limits of responsibility

The manufacturer does not assume any other responsibility concerning the sale of this product and does not delegate any right to a third party to take any responsibility on its behalf. Product warranty does not cover cases of accidents, negligence, alteration, misuse or abuse. In addition, no warranty is offered for any attachments or parts not supplied by the manufacturer.

The warranty period for this product will be for 3 years from the date of purchase. The following cases are not covered by the warranty and payment is required for repairs.

- ❖ **Malfunction due to negligence in handling by the user**
- ❖ **Deliberate disassembly and replacement by the user**
- ❖ **Connection of an improper power supply**
- ❖ **Malfunction caused by natural disasters (fire, flood, etc.)**
- ❖ **Replacement of expendable parts (HDD, FAN, etc.)**

※ Warranty period of HDD and Fan is one year after purchase.

Warranty only refers to the warranty covering products that have been paid for.

After expiration of the warranty period (3 years), examination and repair will be provided for a fee. Even during the warranty period, repair and examination of items outside the preceding warranty scope will require a payment.

This product is not for exclusive use of crime prevention but for assistance unit such as a fire or theft. Therefore, we never take any responsibility for the damage from any incident.

Various experience and technical is needed for installation of this product and an amateur installation might cause fire, electric shock, and defect. All installation operations should be performed by the agency you purchased this product from.

This manual is authored SVR-3200, SVR-1680, SVR-1660, SVR-1645, SVR-960, SVR-945 according to firmware version 1.2.0

Content of this manual can differ by Firmware or Software upgrade, and standard and appearance of product is changeable partly without prior notice to users.

Contents

Chapter 1. Safety Cautions	7
1.1 Explaining the Symbols.....	7
Chapter 2. Summary	10
2.1 Features.....	10
Chapter 3. Product Description	14
3.1 Front part.....	14
3.2 Rear Part.....	16
3.3 OSD MENU structure.....	17
3.4 Function Menu	17
3.5 Factory setting	18
Chapter 4. Monitoring.....	25
4.1 Default Display	25
4.2 Single Display Full Screen.....	25
4.3 Multi Display	25
4.4 Auto Sequencing.....	25
4.4.1 Default System Mode.....	26
4.4.2 Auto Sequencing Mode	26
4.5 Event Screen	27
4.6 Zoom In	28
4.7 Live Video Pause	28
4.8 PTZ Control.....	29
4.8.1 Pan/Tilt	30
4.8.2 Zoom/Focus	30
4.8.3 Load Preset.....	30
4.8.4 Save Preset.....	30
4.8.5 Auxiliary On	30
4.8.6 Auxiliary Off	31
4.8.7 Menu	31
5.1 Playback Mode	32

5.1.1	Playback on Default Display (16/ 9 channel split-screen)	32
5.1.2	Playback	32
5.2	Search Mode.....	33
5.2.1	Time Search.....	33
5.2.2	Calendar Search	34
5.2.3	Event Search	34
5.2.4	Thumbnail Search.....	35
5.3	Copy.....	36
5.3.1	CD/DVD	36
5.3.2	RE4	38
5.3.3	AVI	39
Chapter 6.	Setup	41
6.1	Record Setup	41
6.2	Time Setup.....	41
6.2.1	How to Set Time	42
6.3	Camera Setup.....	43
6.3.1	How to Set a Camera	44
6.4	Monitor Setup.....	45
6.5	Record Setup	46
6.5.1	Program Setup.....	47
6.5.3	Manual/Schedule Recording Setup	50
6.5.3.4	Event Record Setup.....	53
6.6	Audio Setup	56
6.6.1	Audio.....	56
6.6.2	Audio Mixing.....	57
6.7	General Event Setup.....	57
6.7.3	Text Setup.....	59
6.7.4	Preset.....	60
6.7.5	Digital I/O	60
6.7.6	Event Action	61
6.8	Network.....	63
6.8.1	xDSL.....	65
6.8.2	DDNS	66

6.8.3 NTP	71
6.8.4 Remote	72
6.9 System Setup	74
6.9.1 System Setup.....	74
6.9.2 Disk	77
6.9.3 Security	79
6.10 Exit	81
Chapter 7. Web Viewer	82
7.1 System Requirements	82
7.2 LOGIN.....	83
7.3 Connection User setup	83
7.4 Supported Browser	84
7.5 Monitor.....	85
7.5.1 Screen Partition & Image Movement.....	85
7.5.2 Moving Playback.....	86
7.5.3 Channel On/Off.....	86
7.5.4 Sensor indication	86
7.5.5 Relay operation.....	87
7.5.6 Microphone use	87
7.5.7 Event Data	87
7.5.8 Video Recording & Video Storage	88
7.5.9 PTZ Use.....	88
7.5.10 Audio Use	90
7.5.11 Image Channel Close	90
7.6 Playback	90
7.6.1 Screen Division & Channel Change	91
7.6.2 Image Recording	91
7.6.3 Print	91
7.6.4 Move to Web Monitor.....	91
7.6.5 Channel On/Off.....	92
7.6.6 Recording Duration & Recording Size Check	92
7.6.7 Calendar Search.....	92
7.6.8 Playback Toolbar	92
Trouble Shooting	94

Compatible HDD List 96

Compatible Media List..... 96

Specification 96

Dimensions 100

Chapter 1. Safety Cautions

1.1 Explaining the Symbols



Warning

Refers to information users need to know in order to prevent serious injury or death.

❖ Before installation

Verify the supplied voltage (AC100V~AC240V) before connecting to the power supply.

Make sure the power supply is off before installation.

Do not install in a very humid environment. Doing so may cause an electric shock or fire.

Make sure ground line is connected to reduce electric shock risk.

❖ During operation

Do not open the product cover except by qualified personnel or system installer. Opening the product cover may cause an electric shock.

Do not plug multiple appliances into a single power outlet. Doing so may cause fire.

Do not place dishes holding water or heavy objects on the product. Doing so may cause a malfunction.

Do not use in areas where inflammable substances such as propane gas or gasoline or high amount of dust is present. Doing so may cause an explosion or fire.

Do not touch the power line with a wet hand. Doing so may cause an electric shock.

Do not insert a hand into the opening of the DVD. Doing so may cause an injury.

Make sure conductive materials do not enter the cooling ventilator opening.

Do not apply excessive force when pulling on the power cord. Damaging the cord may cause an electric shock or fire.

Improper replacement of the built-in battery by other types of batteries may cause explosion. The batter must be replaced by the same battery type. Also, expired batteries may cause pollution and must be disposed of with care.

Do not place the battery in fire or in extreme heat. Also, do not dissect or disassemble the battery.

Recharge the batteries for the remote controller.

❖ Dismantling and cleaning

Do not dismantle, repair or modify the product deliberately. Doing so may cause a damage, an electric shock or an injury.

Do not use water, paint thinner or organic solvent for cleaning the product exterior. Doing so may cause a malfunction or an electric shock. Use a dry cloth to clean the exterior.



Caution

Provides information users need to know in order to prevent minor injury or product damage.

❖ **During installation**

For adequate ventilation, install the product with at least 15cm of space between the cooler and the wall surface.

To prevent falling, install the product on a flat area . Dropping the product may cause an injury or a malfunction.

Avoid areas exposed to direct exposure to sun light or excessive heat since they may cause deformation or a malfunction.

If a camera is installed while the DVR is being recorded, image in another channel may be disrupted. Starting the storage after the camera has been installed is recommended.

❖ **During use**

Make sure the product is not exposed to concussions or shaking during usage or movement.

Do not move, throw or expose to excessive physical concussion during usage.

Installing additional unapproved hard disk drives may result in abnormal operation. Inquire at the agency of purchase before installing additional hard disk drives.

Product warranty will not cover malfunctions due to additional installation of unapproved hard disk drives.

This product is a supplementary rather than primary means for preventing fire and theft. Our company is not responsible for accidents or damage that may occur.



Samsung Techwin cares for the environment at all product manufacturing stages to preserve the environment, and is taking a number of steps to provide customers with more environment-friendly products. The Eco mark represents Samsung Techwin's will to create environment-friendly products, and indicates that the product satisfies the EU RoHS Directive.

FCC Compliance Statement

NOTE: This equipment has been tested and found to comply with the limits for a Class A digital device, pursuant to part 15 of the FCC Rules. These limits are designed to provide reasonable protection against harmful interference when the equipment is operated in a commercial environment. This equipment generates, uses, and can radiate radio frequency energy and, if not installed and used in accordance with the instruction manual, may cause harmful interference to radio communications. Operation of this equipment in a residential area is likely to cause harmful interference in which case the user will be required to correct the interference at his own expense.

Correct Disposal of This Product

(Waste Electrical & Electronic Equipment)



(Applicable in the European Union and other European countries with separate collection systems.) This marking shown on the product or its literature, indicates that it should not be disposed with other household wastes at the end of its working life. To prevent possible harm to the environment or human health from uncontrolled waste disposal, please separate this from other types of wastes and recycle it responsibly to promote the sustainable reuse of material resources. Household users should contact either the retailer where they purchased this product, or their local government office, for details of where and how they can take this item for environmentally safe recycling. Business users should contact their supplier and check the terms and conditions of the purchase contract. This product should not be mixed with other commercial wastes for disposal.

Correct Disposal of Batteries in this Product

(Applicable in the European Union and other European countries with separate battery return systems.)



This marking on the battery, manual or packaging indicates that the batteries in this product should not be disposed of with other household waste at the end of their working life. Where marked, the chemical symbols Hg, Cd or Pb indicate that the battery contains mercury, cadmium or lead above the reference levels in EC Directive 2006/66. If batteries are not properly disposed of, these substances can cause harm to human health or the environment. To protect natural resources and to promote material reuse, please separate batteries from other types of waste and recycle them through your local, free battery return system. The rechargeable battery incorporated in this product is not user replaceable. For information on its replacement, please contact your service provider.

Chapter 2. Summary

This unit is a digital video recording and playback device to record image and video input from 32/16/9 channels to its built-in hard disk. The buttons on the front of the unit as well as the mouse and GUI allow easy setup and operation.

The Samsung SVR series of digital video recorders (DVRs) provide additional safety and security to banks, apartment buildings and complexes, government offices as well as other public, private and commercial facilities. Recorded high-quality video and images are stored on hard disk for later retrieval or playback. Real time functionality delivers users with the ability to simultaneously record multiple channels, playback video, and copy video. A few of the more advanced user-conveniences include motion detection, Pan/Tilt/Zoom controls (PTZ), password protection, real time audio recording, event lists, and log files.

2.1 Features

Monitoring Screen

The monitoring screen supports vivid, high-definition live visual feed from each channel and provides multiple screens.

- ❖ Real-time MPEG-4 visual output (480 frames)

Multiple split-screen monitoring modes

SVR-3200/1680/1660/1645: Single, 4, 9, 10, 16

SVR-960/945: Single, 4, 9

- ❖ Automatic Screen Switching (AUTO)
- ❖ Supports various monitor output modes

SVR-3200 : 4 Composite , 2 VGA

SVR-1680 : 4 Composite, 1 VGA

SVR-1660/1645/960/945 : 2 Composite, 1 VGA

- ❖ Pan/Tilt, Digital Zoom, PIP (Picture-In-Picture)

The PIP function will be available with a firmware upgrade in the future.

Audio Recording

This feature supports real-time audio input and recording.

- ❖ Simultaneous recording of 16/9 channels audio input in real time

SVR-3200/1680/1660/1645 : Input - 16 channels (4 RCA in rear, 12 D-SUB)

Output - 1 in rear

SVR-960/945 : 9 channels (4 RCA in rear, 5 D-SUB), Output - 1 in rear

- ❖ Supports simultaneous recording and playback

Video Recording

The product is capable of storing visual image data as high resolution MPEG-4 files with up to 480 frames per second, as well as pre-emptively initiating recording sequence up to five seconds prior to an event. Also, the COVERT feature (concealment of visual data) is implemented to protect the user's privacy.

- ❖ High quality real-time MPEG-4 recording
- ❖ Three screen resolution levels for improved control over data size
- ❖ Multi-recording function for manual and schedule events
- ❖ Simultaneous recording/playback/backup/networking operation capacity
- ❖ Easily accessible options for channel-specific resolution and motion detection ranges
- ❖ Per-second frame rates (up to 30 frames per channel) are user customizable

SVR-3200 : Half D1 (704x240) 960fps

SVR-1680 : D1 (704x480) 480fps

SVR-1660/1645 : CIF (352x240) 480fps

SVR-960/945 : CIF (352x240) 270fps

- ❖ Manual and schedule recording function

- ❖ Video loss detection function
- ❖ Event (Sensor, D-I/O, Video loss, Motion detection, Text) log
- ❖ Each channels can support pre-emptive recording sequences up to 5 seconds prior to an actual event

Search/Playback

Various search and playback options are offered for the user's convenience.

- ❖ Playback by time, date and channel
- ❖ Mouse interface increases data searchability
- ❖ Forward/backward search functions in pause
- ❖ Playback by event (Sensor, Video loss, Motion detection and Text) log
- ❖ Remote controller and Jog/Shuttle function further improve searching

(The SVR-960/945 models do not support Jog/Shuttle.).
- ❖ Full-frame playback (available in SVR-3200/1680/1660 only)

Data Storage

A hard disk is included in the product for the purpose of data storage. If the user desires, the recorded data can be stored to DVD-R, CD-R or USB.

- ❖ A built-in hard disk has been provided as a basic supply item
- ❖ Multiple portable data storage media are supported: DVD-R, CD-R and USB
 - ※ Refer to the appendix on the back of the manual regarding the type of compatible media.
- ❖ Hard disk expansion device(External recording device) : SVS-5E (Option as exclusive device) External hard disk expansion is supported with SVS-5E (Available for purchase)

Networking

The product supports LAN, xDSL and such networking capabilities. Combined with the PC interface client, the core features of the device can be easily controlled from a distance.

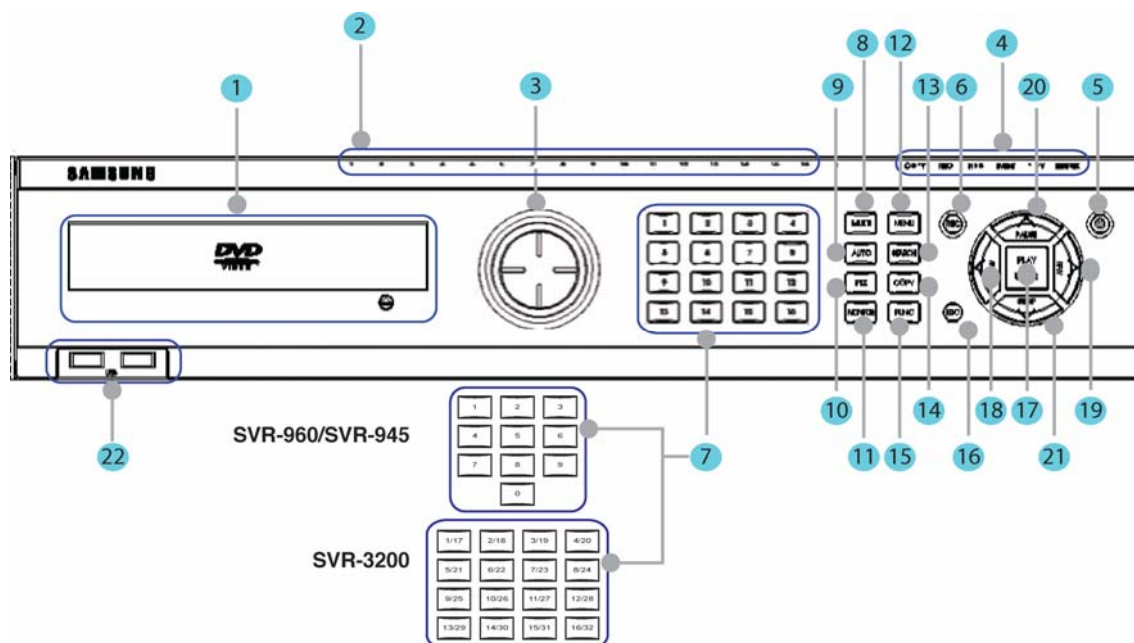
- ❖ E-mails can be sent via TCP/IP or DHCP upon an event trigger
- ❖ Remote live visual feed (Single or 4 Partition)
- ❖ PC playback, storage, search and DVR control functions via Network Viewer
- ❖ Remote recording, search and playback scheduling functions
- ❖ Support 10/100Mbps Ethernet/xDSL
- ❖ Multiple DVR connection

Others

- ❖ User-friendly GUI and mouse interface
- ❖ Simplified firmware upgrades with USB
- ❖ Visual data recording and backup to USB
- ❖ Supports PTZ control (SPEED DOME) and PRESET function
- ❖ Multilingual support : Korean, English, Italian, Spanish, Japanese, etc.
- ❖ Single remote controller to control 16 DVRs

Chapter 3. Product Description

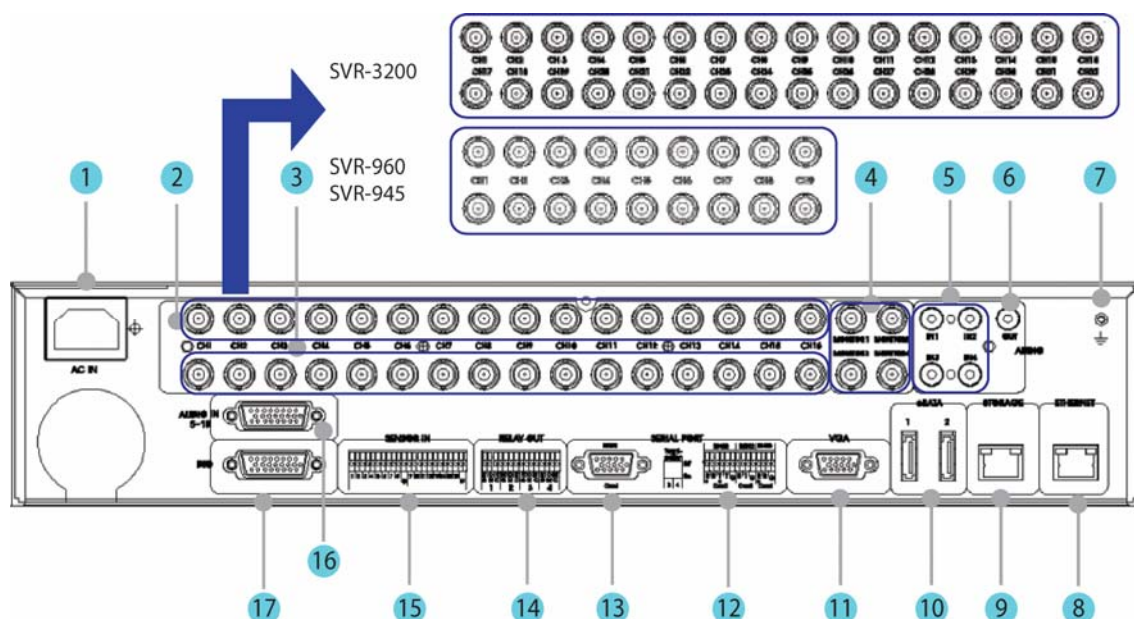
3.1 Front part



No.	Classification	Function
1	DVD-Multi for copying	For copying recorded video and images to DVD/CD optical media. (Exception: The SVR-945 uses an external copy device.)
2	Channel LED	Shows the data input and event operation status
3	JOG/SHUTTLE	Jog can adjust setting values, control the STEP function, navigate through the menu, and adjust the playback speed and direction. Shuttle controls PTZ. (The SVR-960/945 does not support Jog/Shuttle.)
4	REC lamp	Lit when recording.
	HDD lamp	Lit when HDD is working.
	NETWORK lamp	Lit when network is connected.
	EVENT lamp	Lit when an event is detected.
	COPY lamp	Indicates copying operation.
	PLAY lamp	Lit when copying..
5	Power button	Turns on or off the device.
6	REC button	Starts or stops manual recording
7	Channel button	Selects channel in live feed or playback

8	MULTI	Changes split-screen sections for live video feeds or playback.
9	AUTO	Starts or stops user defined sequences.
10	PTZ	Starts or ends PTZ function.
11	MONITOR	SVR-3200/1680 : Cycles through from Monitor 1 to 4. SVR-1660/1645/960/945 : Switches from main and sub monitor
12	MENU	Navigates into the Menu.
13	SEARCH	Starts Search mode.
14	COPY	Starts Copy mode.
15	FUNC	Starts Function mode.
16	ESC button	The Escape button navigates up the menu tree and closes dialog windows.
17	PLAY/ENTER	Start playback or select an item on the menu.
18	◀/REW	Navigates or selects in the menu, or for playback, changes the reverse playback speed.
19	▶/FFW	Navigates or selects in the menu, or for playback, changes the forward playback speed.
20	▲/PAUSE	Navigates or selects in the menu, or for playback, pauses live or recorded video.
21	▼/STOP	Navigates or selects in the menu, or for playback, stops playback.
22	USB1, USB2	USB ports for external devices (mouse, USB memory stick).

3.2 Rear Part



No.	Input/Output terminal name	Function
1	POWER IN	Socket for AC 100V ~ AC 240V power cord.
2	CH1 ~ 32 (16/9)	Connection terminal for camera BNC input. SVR-3200: 32 ea., SVR-960/945: 9 ea.
3	LOOP OUT	Connection terminal for camera BNC output (loop).
4	MONITOR 1 ~ 4	Connection terminal for monitor BNC output. SVR-1660/1645/960/945: 1 ~ 2 ea.
5	AUDIO IN(RCA)	RCA audio jack for RCA input.
6	AUDIO OUT	Audio jack for speaker output.
7	GROUND	Ground terminal between DVR and external device.
8	ETHERNET	Ethernet port for network connections (RJ-45).
9	STORAGE	External storage connection port (Function not supported in the current version). Only available in the SVR-3200/1680/1660 models.
10	eSATA	Connection terminal for external eSATA HDD or HDD for backups.
11	VGA OUTPUT	Output port for PC monitor.
12	Serial Port (Terminal Block) RS-232C/485/422	Connection terminal for expanded controller, speed dome camera, etc.

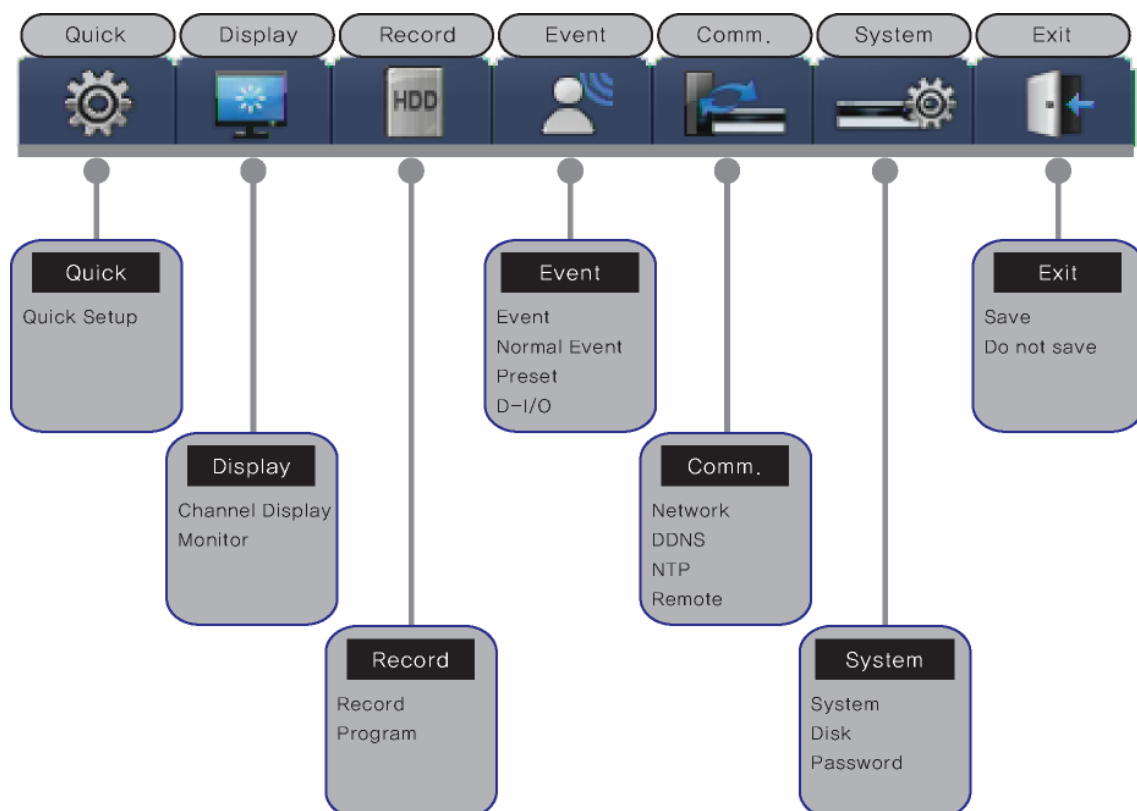
No.	Input/Output terminal name	Function
13	Serial Port (Terminal Block)	RS-232C D-SUB connector.
14	RELAY OUT	Connection terminal for relay output.
15	SENSOR IN	Connection terminal for sensor input.
16	AUDIO IN(D-SUB)	Connection terminal for audio output D-SUB.
17	D-I/O	Connection terminal for DIGITAL IN/OUT.



Refer to detailed description for installation & use from “Install Manual”.

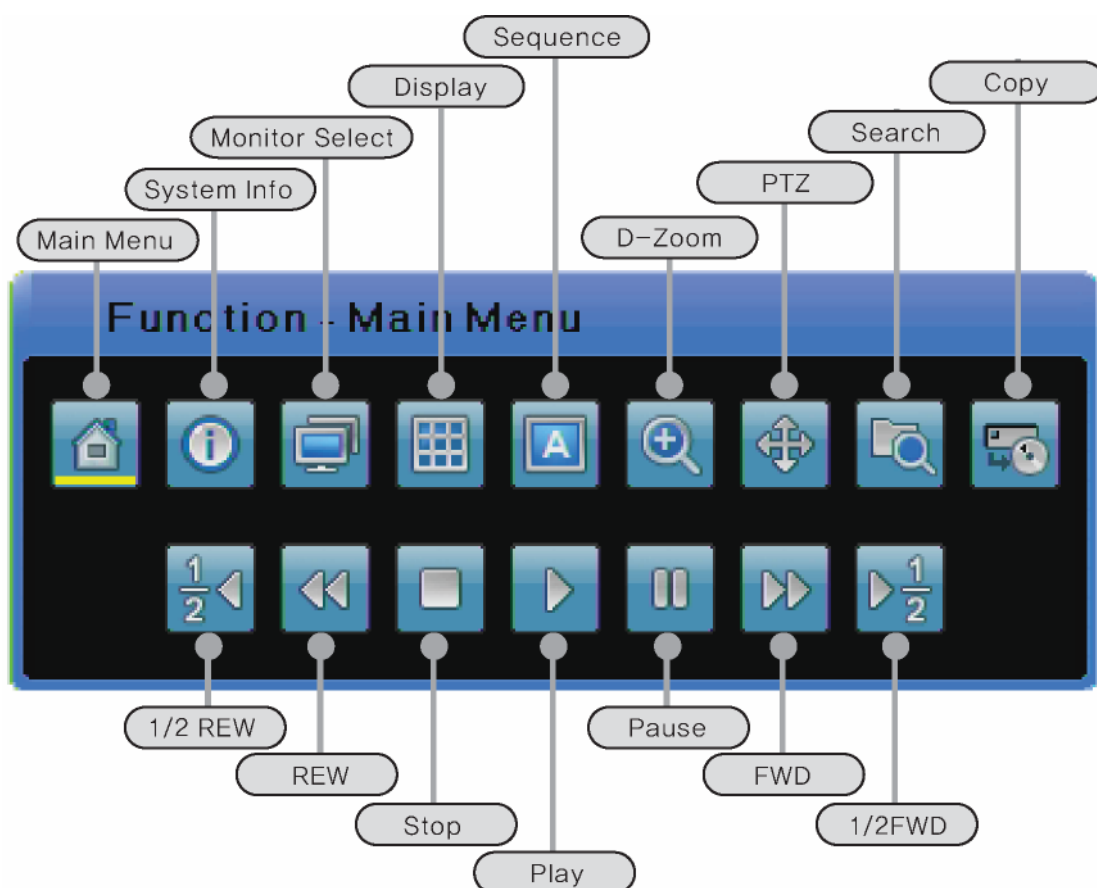
3.3 OSD MENU structure

The menu structure is as shown below. For detailed instructions for configuration, please refer to Chapter 4, 5 and 6.



3.4 Function Menu

The function menu allows the users to access any and all functions and operations of the product with the mouse. To execute a particular function, left-click the icon. Also, all functions listed in the function menu can be executed in full-screen mode. The function menu structure is as shown below.



3.5 Factory setting

To restore the unit back to its factory settings, go to System > System > Restore Factory Setting. A pop-up window saying, "Warning : The system will be reset. Continue with restoring factory default?" will appear. Select "Yes" and press Enter to restore the factory default settings.

Factory Default

Quick Setup			
	Record Mode	ii	Manual & Event
	Schedule		Not Set
	Event Check		Always
	Language		English
	Time	ii	UTC 00:00 Dublin
			No
			MM/DD/YYYY
			Current time
Display Setup			

Channel Display	Channel Number		Ch1
	Title		Cam 1
	Status		Enable
	Color		Color
	AGC		Enable
	Brightness		0
	Contrast		0
Monitor	Monitor Number		Main Monitor (Monitor 1)
	Covert Channel		Deselect All
	Sequencing		Number 1 is set to Channel 1 and Number 2 is set to Channel 2 in order.
	Dwell Time		5 sec.
	Multi Display	4E	Channels 1, 3, 5 and 7
	VGA Mode		800x600@56Hz
	On Screen Display		Select All
Record Setup			
Record	Record Mode		Manual & Event
		Schedule	Not Set All
	Event Duration		Before: 1 sec., After: 1 sec.
	Repeat Record Mode		On
	Warning Level	ii	45%
	Record Data Retention		Off
	Playback Deinterlace		On
	Audio		>>
		Audio Channel	Ch1
		Audio Recording	Off
		Audio Gain	0
		Sync Video Channel	Ch1
		Audio Mix	Mix On
Program	A~Z	ii	CIF, 0fps, Q1

Event Setup			
Event	Event Check		Always
	Event Screen /Dwell time	Monitor 1	Off
	Event Action		Relay 1
		Action Duration	10 sec.
		Normal Event Source	Deselect All
		System Event Source	Deselect All
Normal Event	MD		Ch1
	MD	Sensitivity	2
		Area	Set All
	Sensor		N.O
	Text		>>
		Recording	Off
		Sync Text With	Ch1
		Device	Manual
		Seek Header	Off
		Header 1	header1
		Header 2	header2
		Delimiter	0D0A
		Timeout(ms)	1000
		Lines	20
Preset	Channel Number		Ch1
	Preset		Not Set
D-I/O	D-I/O		Output
	Output Type		Sensor
Network			
Network	Type		Ethernet
	DHCP		Off
	IP addr		Default IP
	Net Mask		Default NM
	Gateway		Default GW

	DNS1		0.0.0.0
	Additional DNS		0.0.0.0
	Port		4000
	BandWidth Limit(Mbps)		0
xDSL	User ID	ii	guest
	Password		*****
	Status		xDSL not connected.
	Port		4000
	Bandwidth Limit (Mbps)		0.0
DDNS	Interval		Off
	Server		www.samsungipolis.com
	ID		None
	Password		None
	Status		Not Registered
NTP	Sync With NTP		Off
	NTP Mode		Client
	NTP Server Loc.	ii	Public
	NTP Local Server IP		0.0.0.0
	Interval		1 (hour)
Remote	Remote Keyboard ID		Com1
	Remote Controller ID		All
	Remote Configuration Setup		RS232
	Remote Relay		9600
	Serial		Com1, >>
		Device	None
		Interface	RS232
		Baud Rate	9600
		Parity Bit	None
		Stop Bit	1
		Data Bit	8

	PTZ		>>
		PTZ Return	Off
		PTZ Idle Time	5
		PTZ Port	Off
		Camera ID	0
System Setup			
System	Language		English
	Key Buzzer		On
	Default		>>
	Load/Save Configuration		Load, >>
	Firmware Update		>>
	DVR Alias		DVR0
	System Log		>>
	Time		>>
Disk	Disk Manager		>>
	Disk Status		>>
Security	Change P/W		Default value
	Menu		Check X, Admin and User: O
	PTZ		Check X, Admin and User: O
	Relay Off		Check X, Admin and User: O
	Playback		Check X, Admin and User: O
	Power Off		Check X, Admin and User: O
	Power On		Check X, Admin and User: O
	Copy		Check X, Admin and User: O
	N/MIC		Check None, Admin and User: O
Exit			
Exit	Save		>>
	Do not save		>>

Record Program

Model	SVR-1660/1645		SVR-960/945	
Mode	Normal	Event	Normal	Event

		Res	Fps	Q	Res	Fps	Q	Res	Fps	Q	Res	Fps	Q
Program	A	D1	7	Q5	D1	7	Q5	D1	7	Q5	D1	7	Q5
	B	D1	5	Q5	D1	7	Q5	D1	5	Q5	D1	7	Q5
	C	D1	5	Q4	D1	7	Q5	D1	5	Q4	D1	7	Q5
	D	D1	3	Q5	D1	5	Q5	D1	3	Q5	D1	5	Q5
	E	D1	5	Q4	D1	7	Q5	D1	5	Q4	D1	7	Q5
	F	D1	3	Q4	D1	5	Q4	D1	3	Q4	D1	5	Q4
	G	D1	1	Q4	D1	3	Q4	D1	1	Q4	D1	3	Q4
	H	D1	0	Q4	D1	7	Q5	D1	0	Q4	D1	7	Q5
	I	Half	10	Q5	Half	15	Q5	Half	10	Q5	Half	15	Q5
	J	Half	5	Q5	Half	20	Q5	Half	5	Q5	Half	20	Q5
	K	Half	3	Q5	Half	10	Q5	Half	3	Q5	Half	10	Q5
	L	Half	10	Q4	Half	20	Q5	Half	10	Q4	Half	20	Q5
	M	Half	10	Q4	Half	15	Q5	Half	10	Q4	Half	15	Q5
	N	Half	5	Q4	Half	10	Q5	Half	5	Q4	Half	10	Q5
	O	Half	5	Q4	Half	10	Q4	Half	5	Q4	Half	10	Q4
	P	Half	3	Q4	Half	5	Q4	Half	3	Q4	Half	5	Q4
	Q	Half	1	Q4	Half	3	Q4	Half	1	Q4	Half	3	Q4
	R	Half	0	Q4	Half	7	Q5	Half	0	Q4	Half	7	Q5
	S	CIF	30	Q5	CIF	30	Q5	CIF	30	Q5	CIF	30	Q5
	T	CIF	20	Q5	CIF	30	Q5	CIF	20	Q5	CIF	30	Q5
	U	CIF	20	Q4	CIF	20	Q5	CIF	20	Q4	CIF	20	Q5
	V	CIF	10	Q4	CIF	15	Q4	CIF	10	Q4	CIF	15	Q4
	W	CIF	7	Q3	CIF	25	Q5	CIF	7	Q3	CIF	25	Q5
	X	CIF	4	Q3	CIF	10	Q4	CIF	4	Q3	CIF	10	Q4
	Y	CIF	1	Q4	CIF	3	Q4	CIF	1	Q4	CIF	3	Q4
	Z	CIF	0	Q4	CIF	7	Q5	CIF	0	Q4	CIF	7	Q5

Model	SVR-1680							SVR-3200					
Mode	Normal			Event				Normal			Event		
	Res	Fps	Q	Res	Fps	Q		Res	Fps	Q	Res	Fps	Q
Program	A	D1	30	Q5	D1	30	Q5	D1	15	Q5	D1	15	Q5
	B	D1	20	Q5	D1	30	Q5	D1	10	Q5	D1	15	Q5
	C	D1	20	Q4	D1	30	Q5	D1	10	Q4	D1	15	Q5
	D	D1	15	Q5	D1	15	Q5	D1	7	Q5	D1	7	Q5

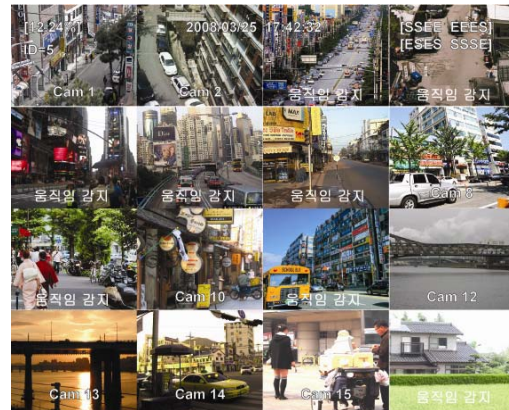
E	D1	20	Q4	D1	30	Q5	D1	10	Q4	D1	15	Q5
F	D1	15	Q4	D1	15	Q4	D1	7	Q4	D1	7	Q4
G	D1	4	Q4	D1	4	Q4	D1	4	Q4	D1	4	Q4
H	D1	0	Q4	D1	30	Q5	D1	0	Q4	D1	15	Q5
I	Half	30	Q5	Half	30	Q5	Half	30	Q5	Half	30	Q5
J	Half	15	Q5	Half	20	Q5	Half	15	Q5	Half	20	Q5
K	Half	4	Q5	Half	10	Q5	Half	4	Q5	Half	10	Q5
L	Half	20	Q4	Half	20	Q5	Half	20	Q4	Half	20	Q5
M	Half	20	Q4	Half	15	Q5	Half	20	Q4	Half	15	Q5
N	Half	15	Q4	Half	20	Q5	Half	15	Q4	Half	20	Q5
O	Half	15	Q4	Half	20	Q4	Half	15	Q4	Half	20	Q4
P	Half	4	Q4	Half	15	Q4	Half	4	Q4	Half	15	Q4
Q	Half	1	Q4	Half	3	Q4	Half	1	Q4	Half	3	Q4
R	Half	0	Q4	Half	7	Q5	Half	0	Q4	Half	7	Q5
S	CIF	30	Q5	CIF	30	Q5	CIF	30	Q5	CIF	30	Q5
T	CIF	20	Q5	CIF	30	Q5	CIF	20	Q5	CIF	30	Q5
U	CIF	20	Q4	CIF	20	Q5	CIF	20	Q4	CIF	20	Q5
V	CIF	10	Q4	CIF	15	Q4	CIF	10	Q4	CIF	15	Q4
W	CIF	7	Q3	CIF	25	Q5	CIF	7	Q3	CIF	25	Q5
X	CIF	4	Q3	CIF	10	Q4	CIF	4	Q3	CIF	10	Q4
Y	CIF	1	Q4	CIF	3	Q4	CIF	1	Q4	CIF	3	Q4
Z	CIF	0	Q4	CIF	7	Q5	CIF	0	Q4	CIF	7	Q5

Chapter 4. Monitoring

When power is supplied to the DVR, images from all channels connected via analog are displayed on the screen in monitor mode. This chapter describes all DVR features in monitor mode.

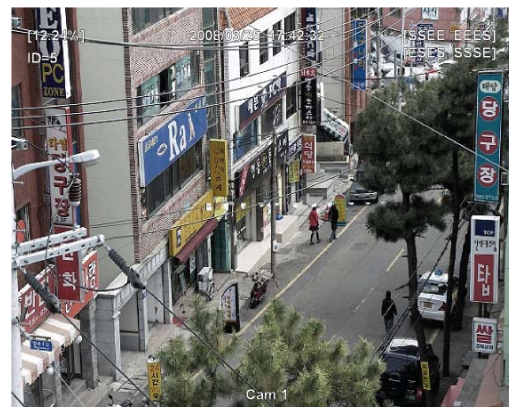
4.1 Default Display

- The DVR automatically powers on when the power cord is plugged in.
- While the DVR is booting up, all LEDs blink on and off in sequence.
- Once it finishes booting up, the default 16 channel split-screen is displayed (9 channel split-screen for SVR-960/945).
- ※ If a password for the unit has been set, the password input dialog is displayed.




4.2 Single Display Full Screen



- Press a channel button or left-click.
- Press the [MULTI] button or left-click once again to go back to the split-screen.



4.3 Multi Display



- To watch multiple channels simultaneously,
press the [MULTI] button or the 
button from the Function menu and click split mode.
- Each press of the [MULTI] button toggles between 4A, 4B, 4C, 4E, 9A, 9B, 10A and 16 channel split-screen modes. The SVR-960/945 supports 4A, 4B, 4C, 4E, 9A and 9B.

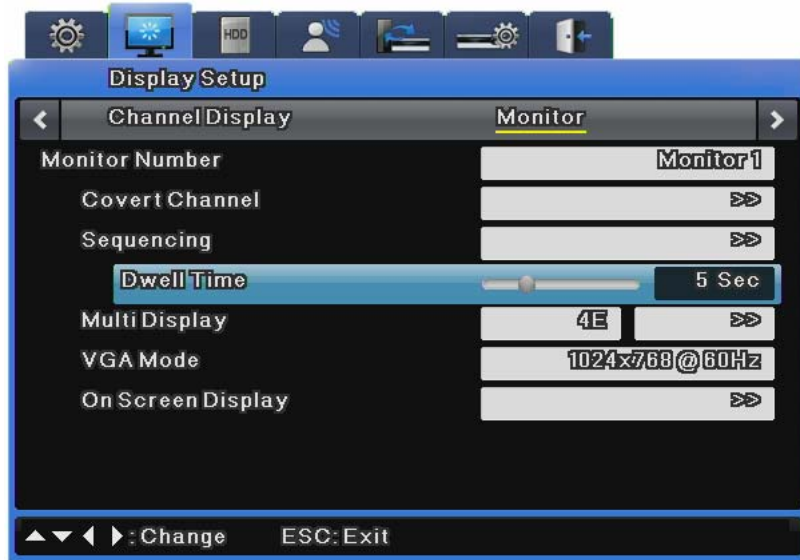
4.4 Auto Sequencing

To go into auto sequencing mode, set 1 to 16 in the auto sequencing setup or set the desired channels and then press the [AUTO] button on the front or the  button from the Function menu. To stop this feature, press the  button again or click Auto to toggle it in the Function

menu.


4.4.1 Default System Mode

- Use the  button to automatically convert the set channels.
- Press the [MENU] button to set the dwell time. Alternately, click the  button on the Function menu.
- Go to "Display Setup" on the OSD menu.
- Go to the "Monitor" submenu under "Display Setup" and press the [Enter] button or left-click.
- Select "Dwell Time" and set a value between 1 and 60 seconds. When this is set to Off, auto sequencing will not work.



- Auto sequencing mode can be enabled by pressing the [AUTO] button in all split modes.
- To exit auto sequencing mode, press the [AUTO] button once again.

4.4.2 Auto Sequencing Mode

- Press the [AUTO] button. Alternately, click the  button on the Function menu.
- Set Sequencing from "Monitor" in the OSD menu.



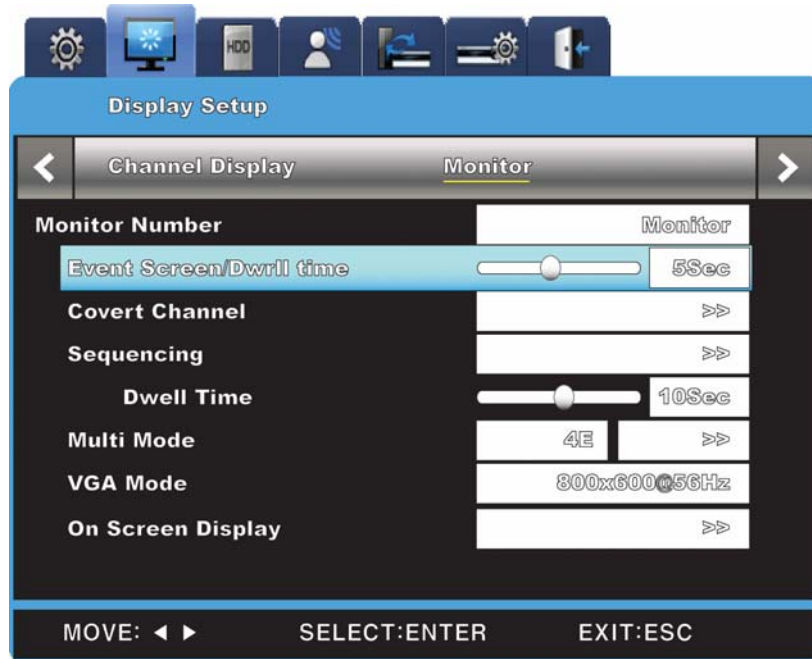
1. Up to 16 user modes can be defined.

2. In the image above, 6 sequences are defined with single screen (1) → full screen (16DIV) → 4 channel split-screen (4A) → single screen (5) → single screen (6) → 9 channel split-screen (9A) all being displayed in sequence.

The SVR-960/945 support 9 channel split-screen.

4.5 Event Screen



- You can set an event screen to automatically pop up.
- The Event Screen can be set for each monitor.
- To set the dwell time for each event popup, select a monitor and set the dwell time for the monitor.
- When events occur in several channels simultaneously, the screen automatically splits into that number of channels. For example, if events occur in 3 channels, event images are displayed on the 4 channel split-screen. To return to the previous screen, press one of the channel buttons.



1. If Event Screen is set to Off, event popups will not work.
2. If Event Screen is set to On, the popup image remains displayed until a button is pressed. To return to the previous screen, press any button.

4.6 Zoom In



- To zoom in on an image, press the [FUNC] button in single display full screen mode, select the  button, select the + button, and press the [Enter] button or left-click.
- When the  button is selected, the default location is the center of the screen. When an image is zoomed in on, it can be moved 18 levels horizontally and 12 levels vertically.
- Use the navigation keys to move the image.
- To return to the previous screen, select the – button and then press the [Enter] button or left-click.

4.7 Live Video Pause

- You can pause a live video feed.
- Press the [PAUSE] button to pause a live video, and press the button again to resume the live feed.

4.8 PTZ Control

You can control PTZ while watching a video in real time by connecting the PTZ controller with the DVR and setting the protocol from the "Serial" menu.


You can either press the PTZ button on the front or press the [Func] button to execute PTZ.

Available PTZ and keyboard models are as shown below.



Model	Maker
SDZ160/330, Samsung SPD Keyboard SCC3000, Samsung SRX-100B	SAMSUNG TECHWIN
BOSCH AutoDome, TC8560X-4	BOSCH
PELCO (P), PELCO (D)	PELCO
Honeywell 755/655, HRX-2000, ScanDome2	HONEYWELL
Sony EVI-D3x	SONY
VT VPT-4x	VT
AD SpeedDome	AD
SungJin SJ372R1'	SUNGJIN
Samsung SCC641	SAMSUNG ELECTRONICS
Panasonic WV-CS850	PANASONIC
LG GAC-PT2	LG
Keyboard KBD300A, WGI SPD1800/2600	WEBGATE Inc.
Merit-Lilin FastDome	MERIT
Elmo PTC200C	ELMO
Canon VC-C4	CANON
HTC-230S	D-MAX
RVision	RVISION
Elbex	ELBEX
VIDO	VIDO
VICON	VICON
Hunt	HUNT
ORX-1000	SYSMANIA
Fine CRR-1600	LIVEI
Tokina	TOKINA

Kodicom KRE	KODICOM
Nuvico	NUVICO

- Press a channel button.
- Press the [PTZ] button on the front or click the  button on the Function menu.
- The PTZ menu (Pan/Tilt, Zoom/Focus, Load Preset, Save Preset) will appear.
- Select the desired menu item and then press the [Enter] button or click.

4.8.1 Pan/Tilt

This menu item is used for real-time Pan and Tilt monitoring.

- Select Pan/Tilt in PTZ mode.
- To use pan the camera, press the left or right arrow key on the front or click on the left or right of the screen. To tilt the camera, press the up or down arrow key on the front or click on the top or bottom of the screen.

4.8.2 Zoom/Focus

This menu item is for real-time Zoom and Focus monitoring.

- Select Zoom/Focus in PTZ mode.
- Use the navigation keys on the front or the mouse wheel to use Zoom and Focus.

4.8.3 Load Preset

This menu item is used to go to a preset location in the real-time monitoring mode.

- Use the up or down arrow key or the mouse wheel to select a preset number.
- Select Load and then press the [Enter] button or click.

4.8.4 Save Preset

This menu item is for setting a new preset location in the real-time monitoring mode.

- Use the Pan/Tilt and Zoom/Focus menu items to adjust the camera position.
- Use the up or down arrow key or the mouse wheel to select a preset number.
- Select Save and then press the [Enter] button or click.

4.8.5 Auxiliary On

This is used for special functions of a PTZ device in real-time monitoring mode.

- Use the up or down arrow key or the mouse wheel to set an Aux number.
- Select On and then press the [Enter] button or click.
- Up to 16 Aux numbers can be set.

4.8.6 Auxiliary Off

This is to stop special functions of a PTZ device.

- Use the up or down arrow key or the mouse wheel to set an Aux number.
- Select Off and then press the [Enter] button or click.

4.8.7 Menu


This is used to enter the console menu of the connected PTZ device. The console menu can be set with the navigation keys and the [Enter] button on the front.

After settings are done, press the [ESC] button or the [PTZ] button on the front to exit the console menu (available only with the Samsung SPD protocol).

Chapter 5. Playback

5.1 Playback Mode

5.1.1 Playback on Default Display (16/ 9 channel split-screen)


- Press the [PLAY] button or click the  button on the Function menu in monitoring mode.
- Press the [PLAY] button or the [FWD] button to play a video at the default 1x speed.
- Press the [REW] button to play a video in reverse at the default 1x speed.



Press the [Play] button in monitor split mode to play videos from 9 or 16 channels.


5.1.2 Playback

PLAY


: Play a video at 1x speed. When using a mouse, click the  button in the Function menu.

Pressing the [PLAY] button in monitor mode always plays multiple videos. Also, pressing the [PLAY] button plays recorded videos from the last playback timestamp.

PAUSE


: Pause video playback. When using a mouse, click the  button in the Function menu.

STOP

: Stop video playback. When using a mouse, click the  button in the Function menu.


FWD

: Each press of this button changes the playback speed (in the order of x1, x2, x4, x8, x16, x32, x64, x1/2, x1, x2 and x4). Pressing the [FWD] button while viewing a live feed plays the video recorded 1

minute before the current live time. Pressing the  button on the Function menu also changes the playback speed.

REW


: Each press of this button changes the reverse playback speed (in the order of x1, x2, x4, x8, x16, x32, x64, x1/2, x1, x2 and x4).


Pressing the [REW] button while viewing a live feed plays the video in reverse from the last recorded frame. Pressing the  button on the

Function menu also changes the playback speed.

STEP FORWARD : Pressing the [FWD] button while paused plays the video frame by frame. Press the [PLAY] button to return to normal playback.

STEP REWIND : Pressing the [REW] button while paused plays the video frame by frame in reverse. Press the [PLAY] button to return to normal playback.

1/2 REWIND : Press the  button on the Function menu to play the video at 1/2x speed.

1/2 FORWARD : Press the  button on the Function menu to play the video in reverse at 1/2x speed.

5.2 Search Mode

This menu item is used to search by time or log to play data at a specific time.

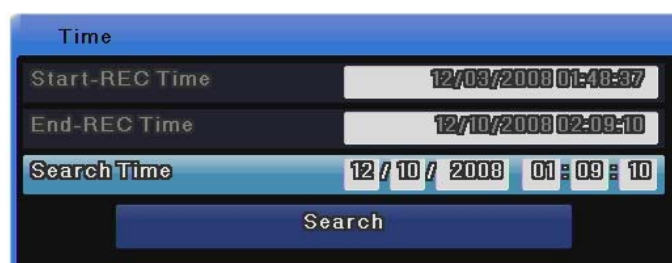
Search mode includes Time, Calendar, Event and Thumbnail.

To go into search mode, press the [Search] button on the front or click the [Search] button on the Function menu.



5.2.1 Time Search

Enter a desired date and time and select Search to go to the video at the specified date and time.



Start-REC Time : Displays the date and time when the recording started.

End-REC Time : Displays the date and time of the latest recording.

Search Time : Select desired date and time between the recording start time and the end time.

Search Button : Search the video for the specified date and time.

5.2.2 Calendar Search

You can search videos more easily with the calendar.



<SVR-1680/1660/1645>

<SVR-960/945>

For the SVR-3200, Monitor 1 displays the recording status from channel 1 to 16 while Monitor 2 displays from channel 17 to 32.

Year : Select a year. You can use the mouse wheel to change the year.

Month : Select a month. You can use the mouse wheel to change the month.

Date : Go to the calendar, select the desired date and press the [Enter] button. You can use the mouse wheel to search by time.

Time : Select a time period and press the [Enter] button to start playback. When using a mouse, select the time and use the mouse wheel to play the video at the specified time.

5.2.3 Event Search

You can specify a time period and search all channels, some channels, all events, motion detection or sensors. Use the up or down arrow key on the front to change the date and time. Alternately, select an item you want to change and use the mouse wheel to change it. The search results are displayed in a separate list in the event search result window. Select an item in the search list and press the [Enter] button or use the mouse wheel to go to the specified date and time and start playback.

Event

Start-REC Time	12/03/2008 02:01:57
End-REC Time	12/10/2008 02:42:07
Search Start Time	12 / 10 / 2008 01 : 42 : 07
Search End Time	12 / 10 / 2008 02 : 42 : 07
Event Channel	All
Event Type	All

Search

Start-REC Time : Display the date and time when the recording started.

End-REC Time : Display the date and time of the latest recording.

Search Start Time : Enter a start date and time to start the search from. Use the navigation buttons to go to an item, press the [Enter] button and use the up or down arrow key to change the value. When using mouse, click an item and use the mouse wheel to change the value.

Search End Time : Enter an end date and time to search until. Use the navigation buttons to go to an item, press the [Enter] button and use the up or down arrow key to change the value. When using a mouse, click an item and use the mouse wheel to change the value.

Event Channel : Select a channel.

For the SVR-3200, Ch1 ~ Ch32 are available.

For the SVR-1680/1660/1645, Ch1 ~ Ch16 are available.

For the SVR-960/945, Ch1 ~ Ch9 are available.

Event Type : Select an event type.

You can select all events, motion detection, video loss or text.

5.2.4 Thumbnail Search

Use the up or down arrow key on the front or the mouse wheel to specify a time and search a specific channel at regular intervals. The search results are displayed in thumbnails. Select a thumbnail to go to the specified date and time and start playback.

Thumbnail


Channel	1
Start Time	12 / 10 / 2008 01 : 42 : 47
Interval	1 Sec

Search

- Channel** : Select a channel. Use the up or down arrow key on the front or the mouse wheel to change the value.
- Start Time** : Enter a start date and time to start the search from. Use the left or right arrow key to go to an item, press the [Enter] button and use the up or down arrow key or the mouse wheel to change the value.
- Interval** : Search in a specific interval and display the result. Use the up or down arrow key or the mouse wheel to change the value.
- View Video** : Press the [Search] button to display 16 videos in the specified interval based on the start time. Press the [Func] button or use the mouse wheel to return to the search window.
- Select Video** : Click a video thumbnail and play it from the specified time. Press the [Enter] button or click to play the video.

5.3 Copy

This menu item is used to copy a recorded video. There are three types of copy: CD/DVD, RE4 and AVI. To use the Copy function, you must change your permissions in the Security settings. For more information about changing permissions, please refer to section 6.9.3 on **Security**. To

copy, press the [COPY] button on the front or click the  button on the Function menu.

5.3.1 CD/DVD

The CD/DVD type uses a CD or DVD to copy a video and detects the CD or DVD automatically.





The SVR-945 is not equipped with a DVD device so you must connect the unit with an external backup device. Connect an external backup device to the USB or eSATA port, execute copy and select CD/DVD. On the media list, a CD/DVD device whose type is [Ext] is displayed. Select the device and make a copy in the same way as other models.

- Type** : Select CD/DVD. Use the up or down arrow key on the front or the mouse wheel to select it. Press the [Enter] button and use the up or down arrow key on the front or the mouse wheel to change the value.
- Channel** : You can select some or all of the 16 channels. Select the channel field and press the [Enter] button or use the mouse wheel to select a channel.
- From** : Enter the start date and time for copying. Use the up or down arrow key or the mouse wheel to set the value.
- To** : Enter the final date and time for copying. Use the up or down arrow key or the mouse wheel to set the value.
- Select Disk** : Select the media to copy. Select the Select Disk field and press the [Enter] button to select the media.
- Start** : Start copying. Move to the [Start] button and press the [Enter] button or left-click.
- FAT32 Format** : Format a USB disk or HDD in FAT32.
Do not use this for CD/DVD copying. When using media, you need to format it first. Select the [FAT32 Format] button and press the [Enter] button or left-click.

For more information on support media, refer to the table below.

DVD-R Maker	CD-R Maker
Mitsubishi (16x recommended)	Mitsubishi (16x recommended)
TDK (16x recommended)	TDK (16x recommended)
Imation (16x recommended)	Imation (16x recommended)
Sony (16x recommended)	Sony (16x recommended)

5.3.2 RE4



You can back up videos using HDD or USB storage. You can play them using the mini player or network manager. Select the channel field and use the [Enter] button or the mouse wheel to open the channel list as shown below.



[SVR-3200]

[SVR-1680/1660/1645]

[SVR-960/945]

- Type** : Select RE4. Use the up or down arrow key or the mouse wheel to select it.
- Channel** : Select the channel field and press the [Enter] button or use the mouse wheel to pop up the channel list.
- Select Channel** : You can select some or all of the channels. Select a channel on the channel list and press the [Enter] button or left-click.
- From** : Enter a start date and time for copying. Use the up or down arrow key or the mouse wheel to set a value.
- To** : Enter the final date and time for copying. Use the up or down arrow key or the mouse wheel to set a value.
- Select Disk** : Select a media to copy. Select the Select Disk field and press the [Enter] button or click to select a media.
- Start** : Start copying. Move to the [Start] button and press the [Enter] button or left-click.
- FAT32 Format** : Format unformatted USB storage devices or HDDs in FAT32 before copying. Select the [FAT32 Format] button and press the [Enter] button or left-click.



A backup file that is not 100% complete cannot play on a PC properly.

5.3.3 AVI

This type is used to copy a part of a selected channel using USB or HDD storage.

Type	Model	Size(MB)
Ext	FAT-0-BMKT Mem	491

- Type** : Select AVI. Use the up or down arrow key or the mouse wheel to select it.
- Channel** : Select a channel. Use the up or down arrow key or the mouse wheel to select it.
- From** : Enter the start date and time for copying. Use the left or right arrow key to move between the items and use the up or down arrow key to change the time and date. When using a mouse, left-click an item and use the wheel to change the value.
- Duration** : Specify the duration for copying. Make a copy only for the specified duration. Use the up or down arrow key or the mouse wheel to specify it.
- Select Disk** : Select a media to copy. Select the Select Disk field and press the [Enter] button or click to select media.
- Start** : Start copying. Move to the [Start] button and press the [Enter] button or left-click.
- FAT32 Format** : Format unformatted USB storage devices and HDDs in FAT32 before copying. Select the [FAT32 Format] button and press the [Enter] button or left-click.



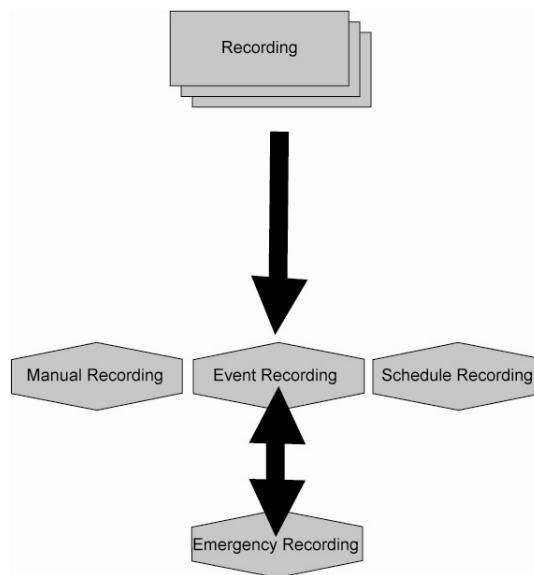
If the copied file does not play on a PC, install the unified codec pack.

Chapter 6. Setup

6.1 Record Setup

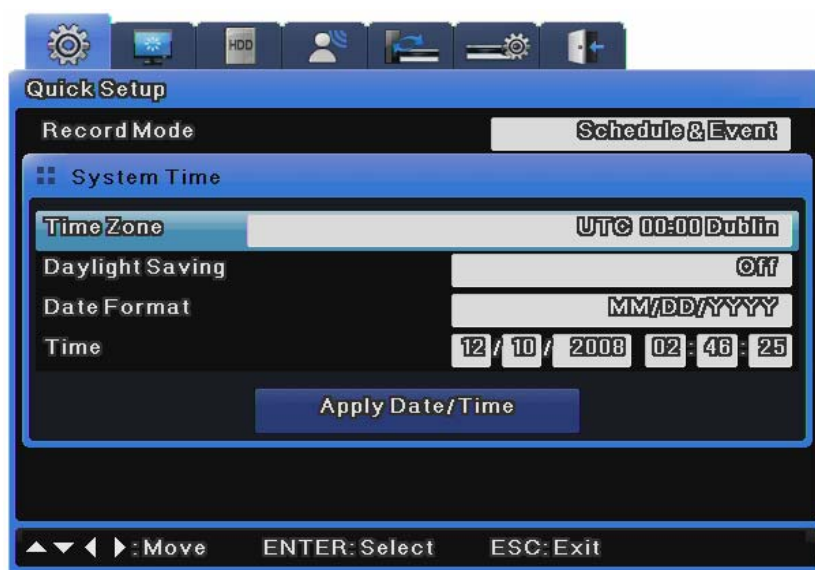
There are 4 DVR recording modes. Their relationship is as shown in the image below, which briefly describes recording modes.

For more information on recording, refer to the following sections.



6.2 Time Setup

You need to set the system time before setting recording.



Setting the time based on your location is very important for the protection of recorded data. It is


not recommended to change the time while recording.

The factory default time zone is UTC 00:00 Dublin.

6.2.1 How to Set Time



If you change the time when recording is already in progress, the time is also changed for existing recorded videos. It is recommended to back up critical video data before changing the time.

- Press the [MENU] button on the front or the  button on the Function menu.
- Go to the "Quick Setup" menu.
- Select "Time" from "Quick Setup". Use the [Enter] button or the mouse wheel to select it.
- If you press the buttons in the proper order, the image in **6.2 Time Setup** appears.
- Use the navigation keys or the mouse to move to each submenu and press the [Enter] button or click.

Time Zone

Use the left or right arrow key on the front or the mouse wheel to select your time zone. Each press of the arrow keys changes the time zone. (To go to the previous menu, press the [ESC] button on the front or right-click. This is the same for all OSD menus.)

Daylight Saving

This menu is linked to Time Zone. This menu is enabled only when a location with daylight saving is selected in Time Zone. Daylight saving locations are programmed in the same way as Microsoft Windows. This menu is used to decide whether to apply daylight saving if the product is installed in a daylight saving location.



For more information on NTP, refer to "NTP" of Network Setup.

Date Format

Select the date format. Use the left or right arrow key or the mouse wheel to select "MM/DD/YYYY", "YYYY/MM/DD" or "DD/MM/YYYY".

Time

Use the left or right arrow key to move between year, month, date and time. Use the up or down arrow key or the mouse wheel to set each item.

Apply

You must press the [Apply] button to save the Date/Time values. Then, the dialog box below appears.



Setups other than "Date/Time" setup are automatically recorded if the menus are completely closed, but "Date/Time" setup is not automatically recorded because it may damage the HDD recording file system. Be sure to press the [Apply] button to apply changes.

6.3 Camera Setup

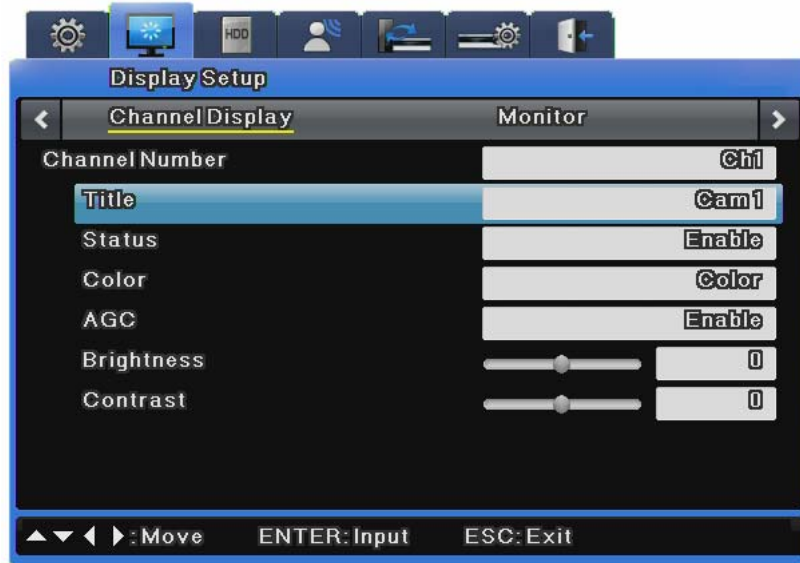
This menu is used to set the conditions of each camera connected to the unit.

You can use the camera setup menu to adjust [Title], [Status], [Color], [AGC], [Brightness], [Contrast] or [PTZ setting] for each of the connected cameras. For more information on each menu item, refer to the following sections.



NTSC and PAL cameras cannot be used for the unit at the same time. For example, you cannot connect NTSC cameras to 1CH to 5CH while connecting PAL cameras to 6CH to 16CH. Also, when replacing NTSC cameras with PAL cameras, you must reboot (power on/off) the unit after connecting the PAL cameras for proper recognition.

The set values apply to monitoring and search in the same way.



6.3.1 How to Set a Camera

Press the [MENU] button and use the navigation keys or the mouse wheel to select a desired channel from the "Channel" menu under the "Display" menu of Display Setup.

6.3.1.1 Title

Specify the camera name.

Press the [Enter] button or click to open the character input menu.

When inputting a string, the character input window appears.

The character input window may differ depending on the menu, but the character input method is the same.



- Use the navigation buttons to input characters.
- When using a mouse, click a character.
- Press the navigation buttons to select characters.
- After selecting characters, press the [Enter] button to input them.
- To delete characters, press the [←] button to move back.
- To insert a space between characters, press the [→] button to insert a space.

6.3.1.2 Channel Status

You can enable or disable a camera.

Press the [Enter] button and use the left or right arrow key or the mouse wheel to select "Enable" or "Disable".

To increase recording or network monitoring speed, be sure to disable unused channels.

6.3.1.3 Color

Press the [Enter] button and use the left or right arrow key or the mouse button to select "Color" or "B/W".

6.3.1.4 AGC (Auto Gain Control)

AGC is used to automatically control the input range of video signals from a camera.

Press the [Enter] button and use the left or right arrow key or the mouse wheel to select "Enable" or "Disable".

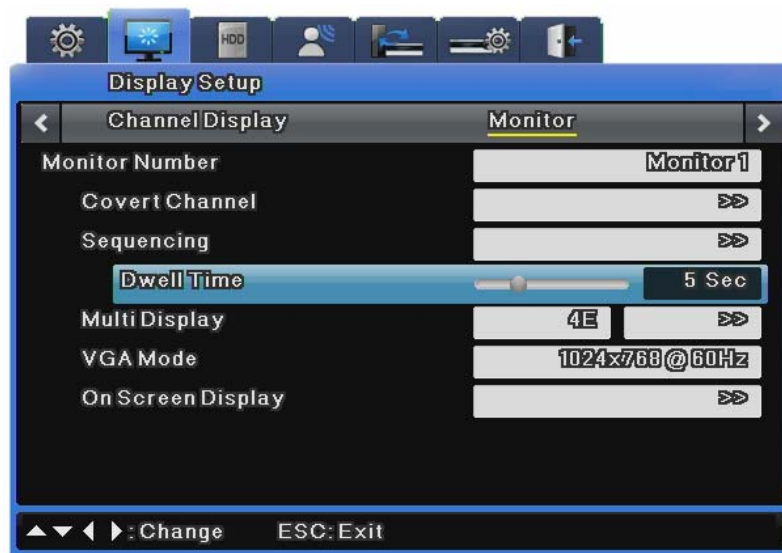
6.3.1.5 Brightness / Contrast

You can adjust the brightness and contrast of a video.

Press the [Enter] button and use the left or right arrow key or the mouse wheel to select a value between "-9" and "+9".

6.4 Monitor Setup

This menu is used to set related items when displaying a video on the monitor.



Monitor 1 & Monitor 2~4 (SVR-3200/1680/1660)

Monitor 1 is available for all supported functions of the DVR while Monitor 2~4 are available for all functions other than playback and search.

Monitor 1 & Monitor 2 (SVR-1645/960/945)

Monitor 1 is available for all supported functions of the DVR while Monitor 2 is available for event popup, user sequencing and split screen.

Covert Channel

This menu is used to hide channels in live mode.

The Covert Channel menu shows the unit's channel list. Press the [Enter] button or click to select a channel. The selected channels then do not show videos in live/playback modes.

Auto Sequencing

This is for editing the auto sequencing function. The 16 available sequencing modes have a dwell time between 1 and 60 seconds.

Multi Display

This menu is used to define the multi display of 4E (4 channels), 9B (7 channels) or 10A (10 channels) in advance. For the SVR-960/945, only 4E (4 channels) can be defined.

To set multi display, select the target and the window on its right, use the [Enter] button or the mouse wheel to open the window, and press the [Enter] button or click to select a channel. Then, press the [ESC] button or right-click.

VGA Mode

Three VGA modes are provided for VGA monitors. The available modes are 800x600, 1024x768 and 1280x1024.

On Screen Display

This determines what information is displayed for live video feeds or video playback.

For live video feeds, you can set the time, channel name, event, recording status, HDD, remote control ID and text. For video playback, you can set the time, command, channel name, event and text display.

6.5 Record Setup

Three different recording options are available: Schedule Recording, Manual Recording, and Event Recording. Schedule Recording records video automatically at a scheduled time. Manual Recording enables you to record video manually by pressing the "REC" button. Event Recording records video when an event occurs if the Program and Event Check settings are activated.

6.5.1 Program Setup

Using the [Program] menu, you can set up a program to use for both Manual & Event and Schedule & Event. You can adjust the frame rate, video quality and resolution of the program.



Two choices are available: 1) Select a program by the frame rate, quality, and resolution, or 2) Set up a program manually. For Event Recording, you can select a frame rate up to the maximum possible for one channel. When events occur simultaneously in more than two channels, the recording frame rate may be automatically adjusted.

Program

Under the Program menu, a total of 26 programs labeled from A to Z are available for you to define with the recording resolution and quality for each channel. For more information about the setting values of the Program menu, please refer to section 3.5.

Ch (Channel)

Indicates a channel number.

R (Resolution)

Indicates the recording resolution. A total of three types are available: D1 (704x480), Half D1 (704x240), and CIF (352x240).

F (fps)

Indicates frames per second: from 1 to 30fps. The maximum frame rate may vary depending on settings.

Q (Quality)

Indicates the recording quality: Q5, Q4, Q3, Q2, and Q1. For Event Recording, Q3 or higher is recommended.

Max R/F

Indicates the maximum frame rate available for a selected resolution. For instance, CIF 30fps means that you can select up to 30fps for the CIF resolution of a selected channel. D1 30fps means that you can select up to 30fps for the D1 resolution.

How to Calculate Recording Performance

D1 [704x480] = 2 x Half D1 [704x240] = 4 x CIF [352x240]

120 D1 compressed frames = 240 Half D1 compressed frames = 480 CIF compressed frames



The resolution and maximum frame rate vary depending on the number of enabled channels.

- **When disabling a channel in the Channel settings**

How to Disable: Select Menu > Camera Settings > Use Channel > Disable. (The channel is then grayed out to show that it is disabled.) For example, the SVR-1660 can record every channel at up to CIF 30fps. If a channel is "Disabled" in the Channel settings, there is then a surplus of CIF 30fps recording capacity. You can use the —surplus CIF (352x240) 30fps to increase another channel's resolution to Half D1 (704x240) 30fps (remember from above that CIF x 2 = Half D1).

- **Setting a channel's frame rate to "0fps" in the Program settings**

Surplus CIF 30fps cannot be used to increase another channel's resolution because the **0fps channel still uses at least 2 to 3 recording frames per second for various reasons including network communications. You must disable the channel instead of setting it to 0fps if you want to conserve and use the surplus CIF 30fps recording capacity for another channel.**

**Relation Between Normal Recording and Event Recording**

When an event occurs, Event Recording is activated with the Program settings. DVR recording performance varies depending on the model. For example, the recording performance of the SVR-1660 is CIF 480fps for both Normal and Event Recording. When both recording modes are in effect, its recording performance cannot exceed CIF 480fps. That means that Event Recording can be set up for the SVR-1660 only if the total of Event and Normal Recording of all channels does not exceed CIF 480fps.

• **Event Settings in and CIF 480fps Recording Performance**

When every channel is set up to record normally at CIF 30fps, the Event Recording settings of for 1st channel are limited to CIF 30 fps, Half 15 fps, and D1 7fps. If you want to set the Event Recording settings value to D1 30fps, the Normal Recording settings value of the other channels must be changed to total CIF 360fps or less.

• **When Events Occur in Multiple Channels Simultaneously**

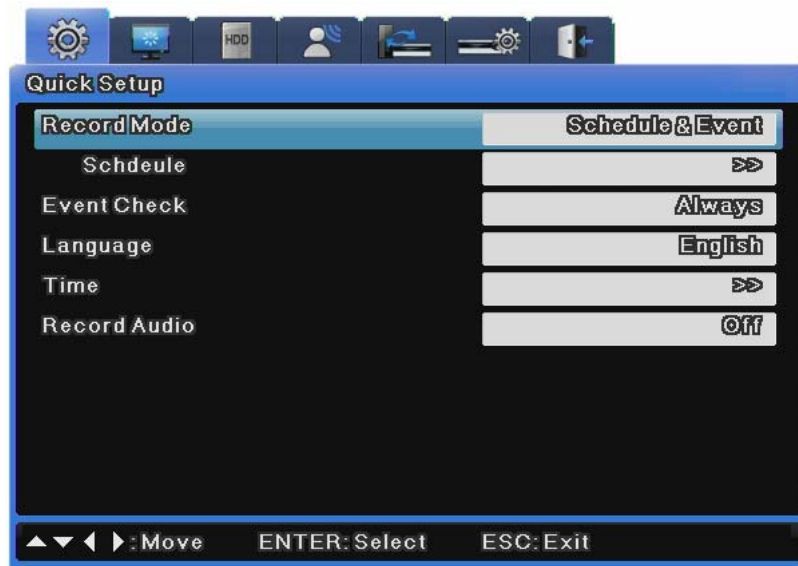
When events occur simultaneously in multiple channels and the Event Recording settings value exceeds the DVR's maximum recording performance, the Normal Recording settings value is retained, and the channels with events drop their Event Recording frame rates settings to record the events.



The SVR-1680 provides D1 30 compressed frames for all channels; it can record programs at a manually selected resolution and frame rate at all times.

6.5.2 Quick Record Setup (Quick Setup)

Quick Setup provides recording, language, time and audio setups in one place.

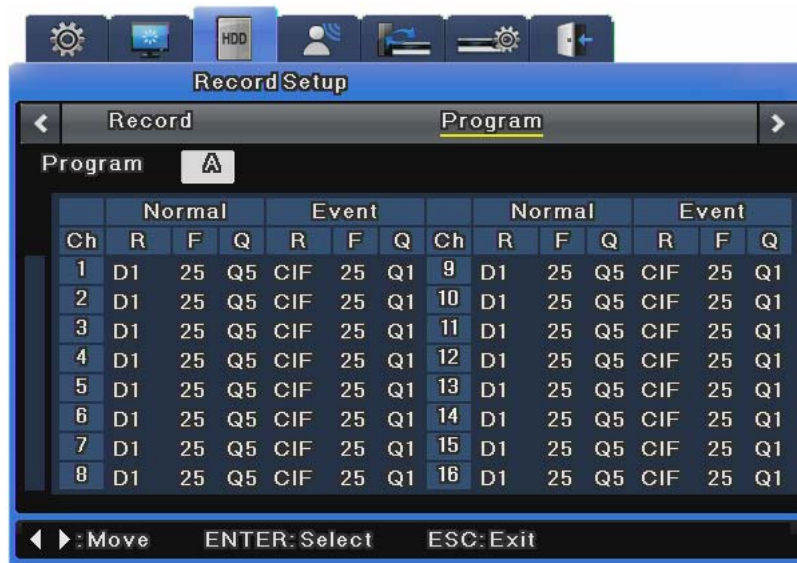


6.5.2.1 How to Set Quick Recording

Select 'Quick Setup'.

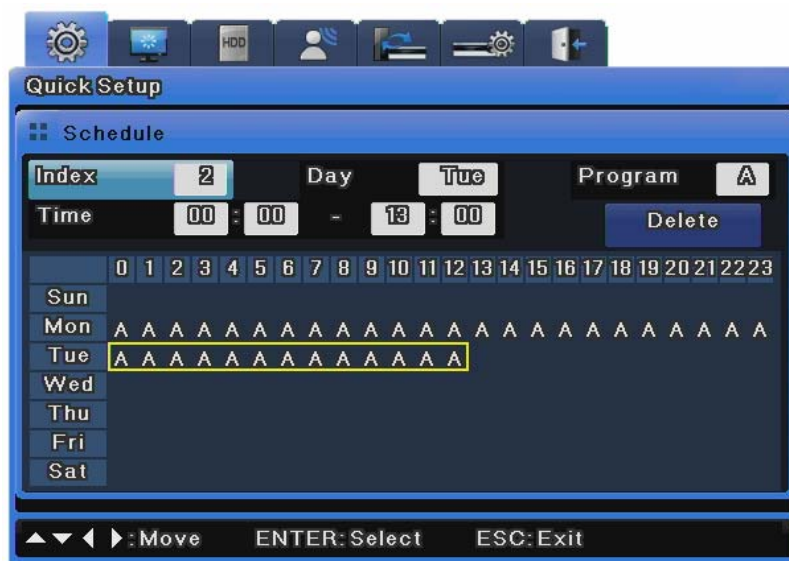
Program Setup

All programs are set to 0fps by default so each program needs to be set individually (described in details in recording menu).



Schedule & Event Setup

Set record mode to "Schedule & Event" and set a schedule and event for each date and time.



How to Check Recording



If record setup is properly completed, the 'REC LED' on the front will flicker. Also, [S] is displayed to show that currently all channels are recorded as scheduled.

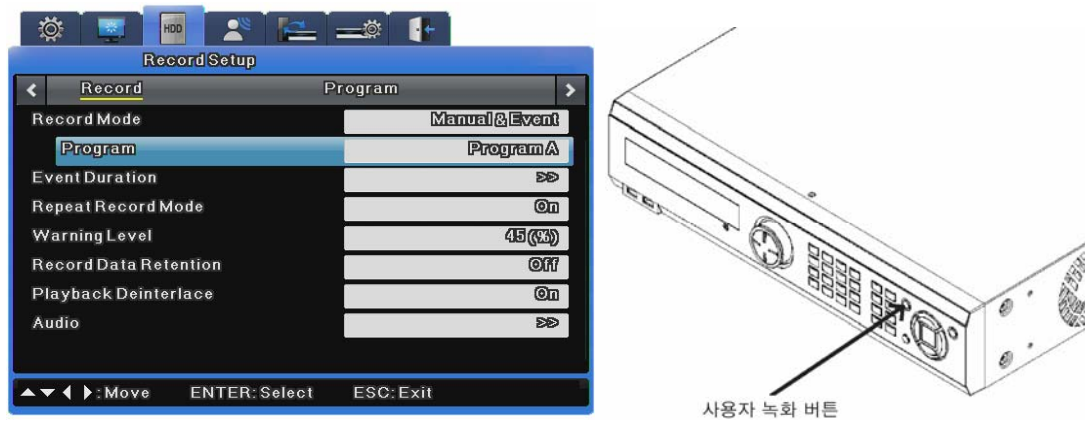
6.5.3 Manual/Schedule Recording Setup

You can switch between Manual and Schedule Recording by changing the recording mode.

Both Manual and Schedule Recording enable you to choose a program to record. The resolution, frame rate, and quality may vary depending on the selected program.

6.5.3.1 Manual Recording

Manual Recording is activated only when the recording mode is set to Manual & Event. After selecting a program, press the [REC] button on the front of the DVR unit to begin recording. If you want to schedule a recording, switch the recording mode to Schedule & Event.

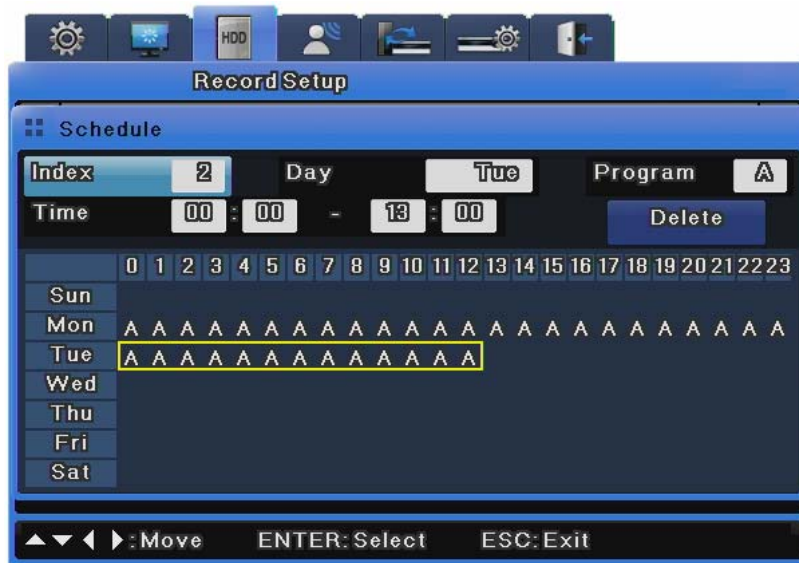


6.5.3.2 Schedule Recording Settings

Schedule Recording records video automatically at a scheduled time according to the chosen program settings. Set the recording mode to Schedule & Event then select a program for a scheduled date and time.



When selecting a program, the default settings value of the program is displayed for you to confirm. You can select one or more programs from among the 26 available, all labeled from A to Z. The picture below shows an example using only Program A.



- Index: 1~50 different programs can be set
- Day: designate recording date
- Program: select a recording program (A~T)
- Time: designate recording time
- Delete: delete the desired INDEX

Setting Method

As you set INDEX, DAY, PROGRAM and HOUR, then the content will be immediately displayed in the table. If you select the start time and the stop time for recording in the table and click on them in order, the content will be displayed in INDEX, DAY, PROGRAM and HOUR.

Deletion Method

Select the desired INDEX and then click on the Delete button. If you click on the Delete button before selecting INDEX, then the content of INDEX that was selected previously will be deleted first. After that, the content in the highest INDEX will be deleted and then others INDEX will be deleted in the increasing order of INDEX.

Editing Method

Select the INDEX to be edited and then change DAY, PROGRAM and HOUR on your own. If all the INDEX fields up to INDEX 50 are already set, then click on the time in the table to be edited with your mouse. Click on the hour in the table to be changed, again with your mouse. The previous setting will be deleted and overwritten with the change that you have just made.



If the same time is set twice then '!' will be displayed in the table.

When you set the region of time, you may not include the existing time that is set previously.

6.5.3.3 Record Setting

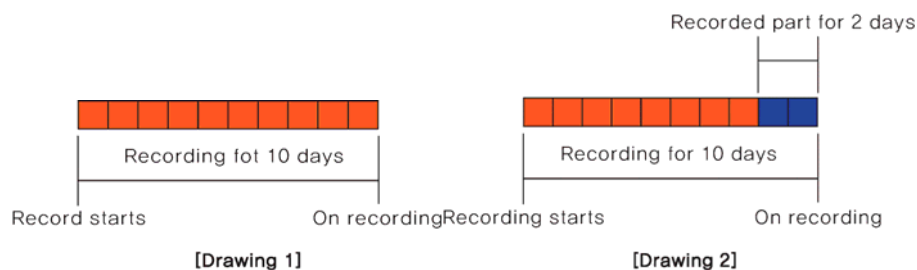
Repeat Record Mode

When there is no more space for recording to hard disk, recorded data is removed from the foremost portion automatically.

Warning Level

This checks the capacity of all disks connected to the DVR and gives a warning when the specified level is met.

Recorded Data Retention



This shows videos recorded only on specified dates in hard disk.

For example, if the entire video is recorded for 10 days (Drawing 1) and only 2-day recording (Drawing 2) is specified for playback, only the 2-day recording is available for playback.

Playback Deinterlace

This turns playback deinterlace on or off.

This is available only when the recording resolution is set to Full D1. If this is set to On, imaging shaking decreases while Full D1 video is paused.

6.5.3.4 Event Record Setup

This menu item is used to record video based on events. To use Event Recording, select a resolution, frame rate, and quality from the available 26 programs.

Event recording is divided into recording by sensor, by motion detection, by text and by digital input. In the Programs settings, select a program first. If you want to adjust the details of a program, select the program and then adjust the resolution, frame rate, and quality. (For more information, please refer to section 6.6.1 on Program Settings.)

Event Recording is used mostly in conjunction with other recording options: Manual & Event and Schedule & Event.

Go to [Record Setup] > [Record]. In "Record Mode," select Manual & Event or Schedule & Event.



To use Event Recording only, please refer to the following instructions.



1. In Record Mode, select Manual & Event or Schedule & Event.
2. In the Program settings, change the frame rate of Normal Recording to 0 and of Event Recording to the desired rate.
3. Set an Event Check to activate the recording.

Event Check Settings

This menu item sets times for event recording and has the options of Always, Disable and Timezone. The "Always" option always detects events while the "Timezone" option uses events only for specified hours. When Timezone is selected, a setup similar to schedule setup is possible; the event check time can be set by the hour.



- INDEX : 1~50 different programs can be set
- Day: designate recording date
- Time: designate recording time
- Delete: delete the desired INDEX

Setting Method

As you set INDEX, DAY, and HOUR, then the content will be immediately displayed in the table. If you select the start time and the stop time for recording in the table and click on them in order, the content will be displayed in INDEX, DAY, and HOUR.

Deletion Method

Select the desired INDEX and then click on the Delete button. If you click on the Delete button before selecting INDEX, then the content of INDEX that was selected previously will be deleted first. After that, the content in the highest INDEX will be deleted and then others INDEX will be deleted in the increasing order of INDEX.

Editing Method

Select the INDEX to be edited and then change DAY, and HOUR on your own.

If all the INDEX fields up to INDEX 50 are already set, then click on the time in the table to be edited with your mouse. Click on the hour in the table to be changed, again with your mouse. The previous setting will be deleted and overwritten with the change that you have just made.

6.6 Audio Setup

This menu is used to set audio recording, sync or mixing.



6.6.1 Audio

This menu is used to set the audio channel, audio recording, audio gain and sync.

Audio Channel

Select a channel for audio.

Audio Recording

Decide whether to record audio. If No is selected, audio is outputted only for live video feeds. If Yes is selected, audio is outputted even for playback.

Audio Gain

This menu is used to adjust audio volume up or down.

Sync Video Channel

This menu is used to determine which channel the input audio is linked to for output. This is available only for recording. Audio output for live video feeds is described in Audio Mixing. If Sync Video Channel is set to 5 for Channel 1 audio, the audio inputted into Channel 1 is outputted when Channel 5 is selected. By default, Channel 1 audio is outputted to Channel 1 video.

6.6.2 Audio Mixing



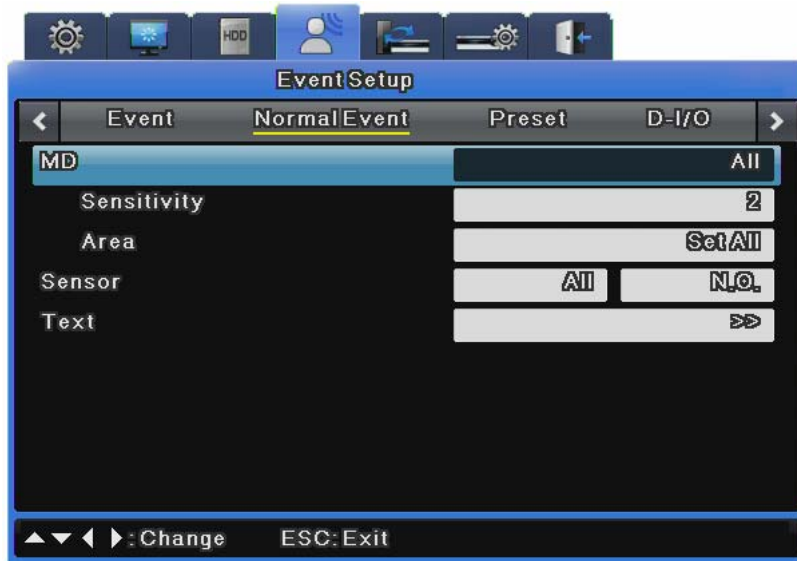
This menu is used to select audio for live video feeds. If All is set, all inputted audio is mixed for output regardless of channel selection. If specific audio is selected, only the specified channel is outputted regardless of the channel selection.

6.7 General Event Setup

This menu is used to set events that you want to use.

6.7.1 Motion Detection Setup

This menu is used to save events occurring through motion detection for each channel.



Motion Detection

This enables each channel or all channels to detect motion and notify users.

- Channel

Channel can be set to All or as follows.

SVR-3200: 1~32CH

SVR-1680/1660/1645: 1~16CH

SVR-960/945: 1~9CH

- Sensitivity

Sensitivity can be set to Lowest, 1~10, or Highest for each channel.

- Area

Area is used to set the motion detection area.

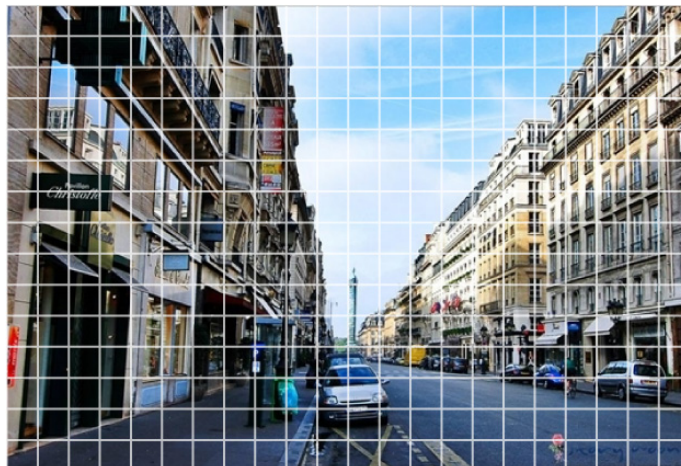
If Channel is set to All, Area can be set to Set All or Unset All. When each channel is set individually, Area can be set to Set All, Unset All or User Defined.

- User Defined

User Defined is only available when each channel is set individually. It is used to set an area where you want to detect motion intensely.

It allows you to set a user-defined motion detection area. You can select one or more motion detection areas out of the **squares** on the **22x15** grid.

The default setting is "Set All". Press the [Area Setup] button to open the motion detection area setup window.



Users can specify motion detection areas on the screen.

The setup window composed of **330 squares** in a 22x15 grid appears. Squares set as motion detection areas turn gray. To select motion detection areas, use the navigation buttons to select them and press the [Enter] button or click them. Press the [ESC] button or right-click to return to

the previous menu.

6.7.2 Sensor

A total of 16 sensors (9 sensors for the SVR-960/945) can be set. If All is selected, all channels are set to N.O or N.C. You can select channels and set them individually to N.O., N.C. or Off.

6.7.3 Text Setup

Recording

You can turn recording for text input on or off.

Sync Text With

This selects channels to link with text data.

Seek Header

This parameter is not needed if, just like Star Finger-007, protocols are already registered and supported for various types of data that comes from external devices (Access Control, POS, ATM, etc.). However, this parameter is needed to see how one unit of data out of continuously incoming text data is structured. In other words, all data has its start and end points, and the header is data that is always inserted to indicate the start point. Therefore, by defining a header here, the DVR can recognize from the header that it is the start point of the data. Two headers can be set and detected because one device can send various types of data to external receivers.

Delimiter

The delimiter value may differ depending on the device used. For more information on delimiters, refer to the user manual or the device manufacturer.

Timeout (ms)

Lines defined below are the maximum number of text lines available for one piece of data. Even though data is standardized, lengths may differ. For example, three lines are programmed for client name input for an ATM, but if someone registers only his/her first name and last name, only two lines are provided when the person uses an ATM. However, the DVR cannot detect this automatically, so Timeout is used to determine how long is needed to recognize the received data as complete data after the last line is entered.

Lines

This defines the maximum number of lines for one piece of data.



An external device may not be recognized depending upon its characteristics, so it is recommended to contact the manufacturer before installation.

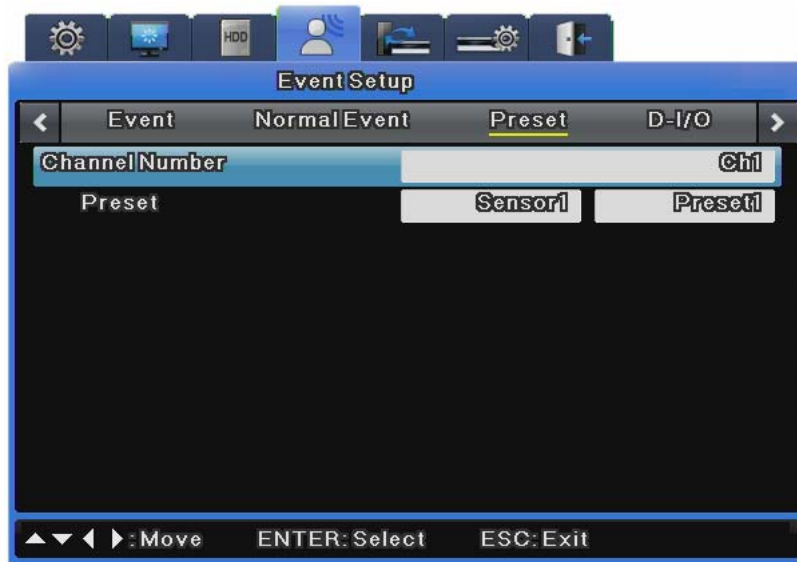
6.7.4 Preset

This menu is used to activate the presets specified in the PTZ based on sensor input.

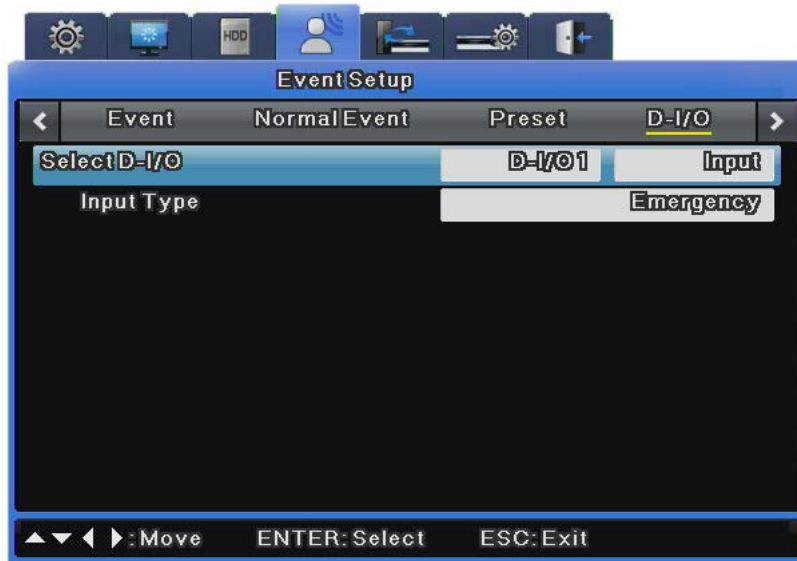
Specify a preset with PTZ attached to each channel.

Select a channel in the preset menu and select an event for the preset.

You can choose sensor, MD or text for an event, and 16 presets can be set.



6.7.5 Digital I/O



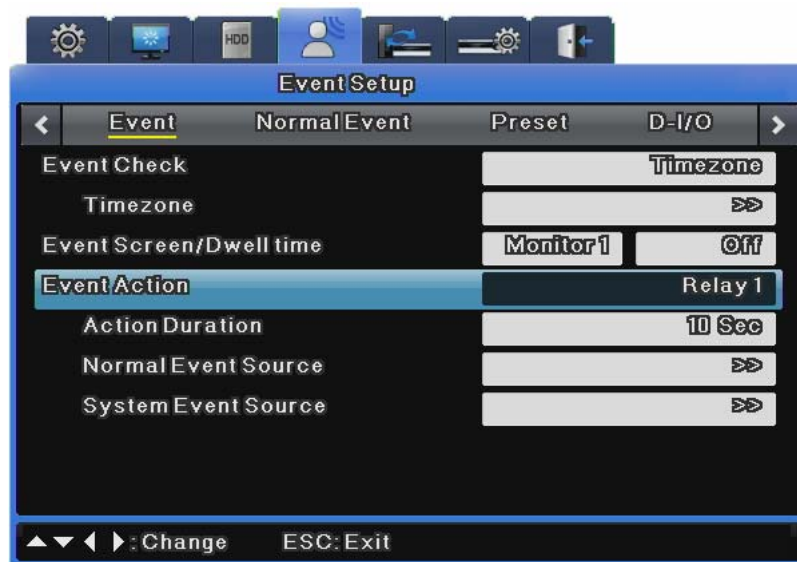
Digital I/O are digital ports available for input and output at the same time., There are 12 digital inputs and outputs.

Digital I/O Channel & Input/Output

All 12 channels can be set to input/output. When channels are set to input, if an input signal is received by even one channel, emergency recording will operate. When they are set to output, if sensor input is received, it will operate.

In Digital I/O Setup, if you set one of the 12 Digital I/O to [Input], set Input Type to [Emergency] and turn Digital I/O on, the emergency recording will operate. The macro set in the event recording is used for the recording. The recording will continue based on the value set in [Recording After Event] under Event Recording and then stop.

6.7.6 Event Action



This sets actions based on event input.

Event Action

For Event Action, you can select Relay 1~4, buzzer, or E-Mail.

Action Duration

Action Duration is used to maintain an action for a specified time when relay or buzzer is set. If E-Mail is set, e-mails are sent in specified time intervals.

Normal Event Source

You can set Normal Event Source to 16 Sensors, 16 MDs, 16 Video Losses and Text.



System Event Source

This sets some or all of disk error, disk full, fan error, authentication failure and DDNS registration failure.



E-Mail Setup

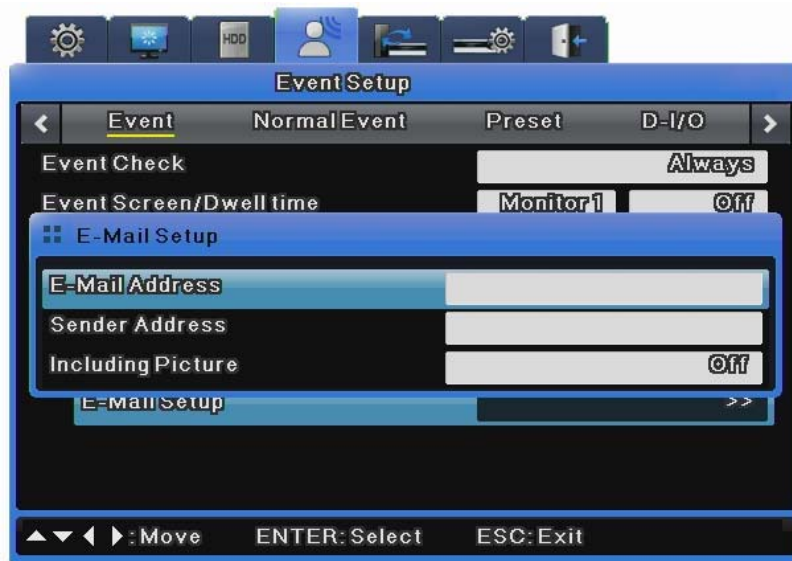
E-Mail address is set when e-mail is used for output.

For e-mail address, enter an e-mail address for a message recipient.

The address format is xxxx@xxxxxx.xxx. However, only Roman alphabet letters and numbers are allowed.

- Sender Address

Sender Address is set when e-mail is used for output. The address format is xxxx@xxxxxx.xxx. You do not have to enter an e-mail address. In general, use an address that identifies the e-mail as being sent from a specific DVR.



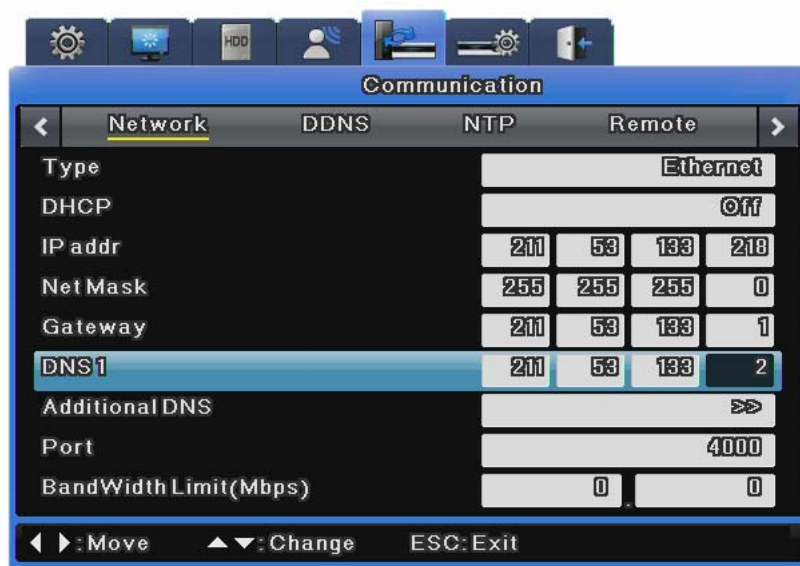
- Attaching Image Files

For a Normal event log, the system sends an e-mail attached with an image of the event channel along with the event information including the sensor, movement detection, and object disappearance.

For a System event log, the system sends only the event information because the channel pairing option is not available.

6.8 Network

This sets network information when connecting the DVR to a network.



Type

This is used to select the network type (Ethernet/xDSL) connected to the DVR. Select Ethernet when the DVR is connected to dedicated line, cable modem or LAN.

Select xDSL when the DVR is connected to a PPPoE-type xDSL line. However, if the xDSL line is not of the PPPoE type, you must select Ethernet.

DHCP

Dynamic Host Configuration Protocol (DHCP) manages host addresses on a network. All the hosts on a LAN use this protocol to share limited IP addresses when accessing the Internet. In other words, a DHCP server allocates dynamic IP addresses to all the hosts on the LAN.

If the LAN has its DHCP server and the DHCP menu item is enabled, the DHCP server allocates an IP address to the DVR.

'DHCP' is used on a LAN with a DHCP server installed. Generally, small and large LANs have DHCP servers while small LANs use Network Address Translation (NAT) from a hub or router.

IP Addr

IP Address is used for communication between the DVR and Network Manager, and is also used when Webviewer accesses the DVR. This is available only when Net Mask and Gateway are set.

Net Mask

Net Mask specifies a range of IP addresses and enables IP addresses in the range to communicate. Net Mask should be allocated by a network administrator.

Gateway

Gateway must be specified to enable IP addresses to communicate and should be allocated by a network administrator.

DNS1

DNS1 must be specified to register the DVR to SWR while DNS Address should be allocated by a network administrator.

Additional DNS

Additional DNS is used to replace DNS1 when it is unstable or has a problem.

Port

Port is used to register to SWR, connect to Network Manager, or connect to Webviewer.



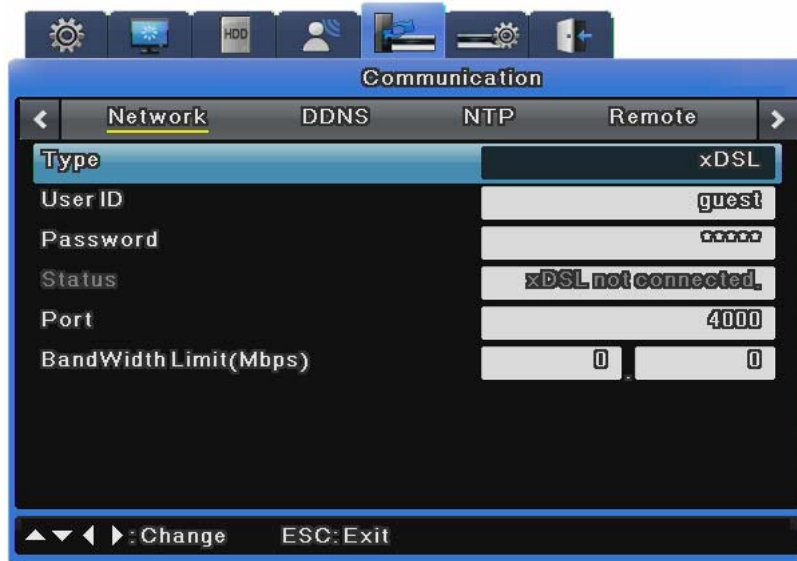
The default port is 4000. Be careful about the port entry when a PPPoE modem Internet sharing device are in use.

Bandwidth Limit (Mbps)

This sets the maximum transmission speed of data outputted from the DVR, or the data transmission capability of the DVR. This may be left blank. Ask your network administrator to specify it when necessary.

6.8.1 xDSL

If the DVR is connected to xDSL and uses PPPoE, set Type to xDSL and specify a user ID and password. You must use the user ID and password given when you subscribed to the xDSL service.



User ID/Password

If the DVR is connected to xDSL, you must specify a user ID and password.

Status

This shows the connection status of the DVR.

6.8.2 DDNS

If the DVR is connected to a cable modem or an xDSL modem, a new IP address will be assigned each time the device connects to the ISP. In such a case, the user may not be able to find out the DVR's IP address. By registering a DVR with a dynamic IP address to a DDNS server, the DVR's IP may be identified by connecting to the DDNS server.

To register a dynamic IP address to a DDNS, follow the instructions shown below.

DDNS Registration procedure

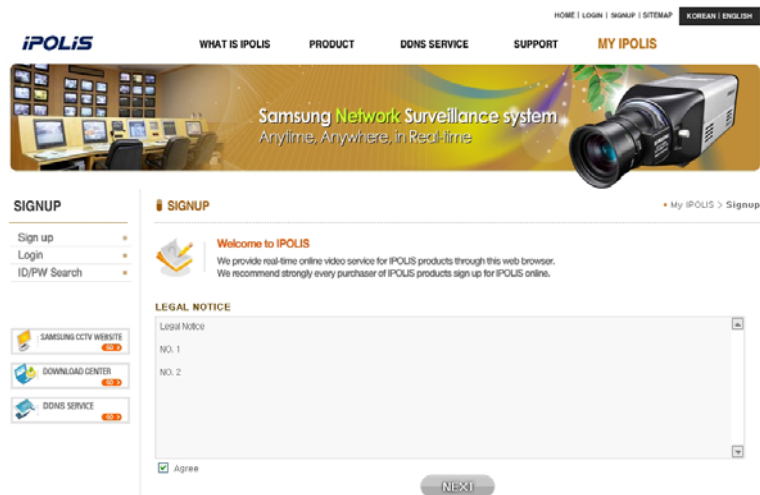
1) Sign up at iPOLiS homepage.

- The homepage URL is [www.samsungipolis.com]

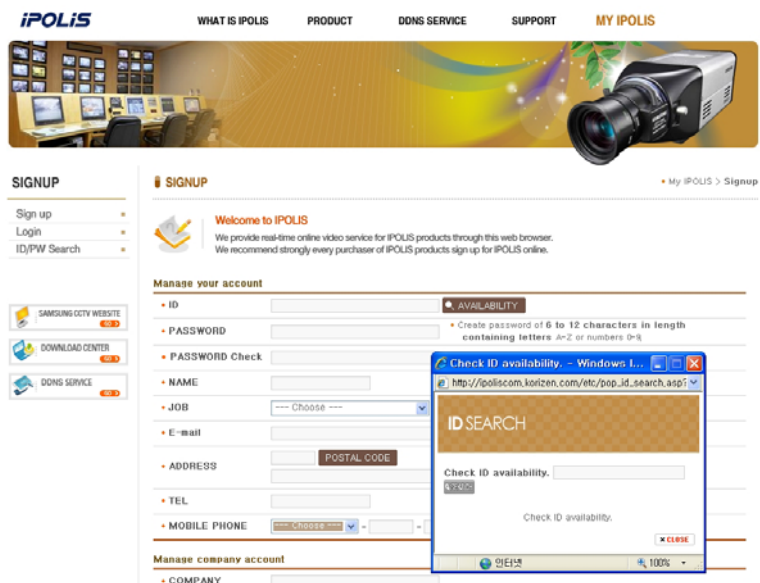
- iPOLiS Home page



- Accept the terms and conditions



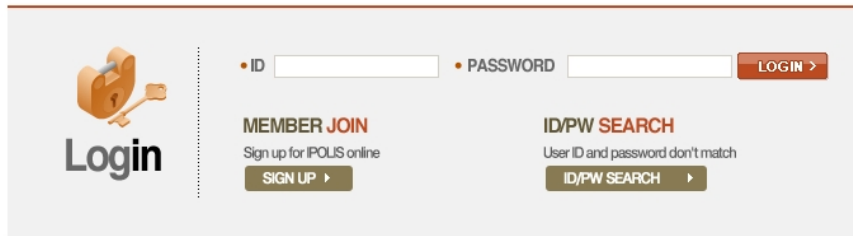
- SIGN UP page: check ID availability



2) Register the product after sign up.

- Log on to iPOLiS website

WELCOME to IPOLIS !



The interface shows a login section with fields for ID and PASSWORD, and a LOGIN button. Below this are two buttons: MEMBER JOIN (with a sub-link SIGN UP) and ID/PW SEARCH (with a sub-link ID/PW SEARCH).

- Product List (If you didn't register products, there are no list)

Product List

My iPOLIS > Product List



Current product list is displayed.

If wanted product is not in the list, click 'Product Registration' at the bottom.

NO	ID	Model	Location	Status	View	Information	Management
1	jusun	SVR-1650	121	OFF	View	Check	Edit Delete
2	korizen	SNS-100	노보텔 앞마당..	ON	View	Check	Edit Delete
3	mydvr	SVR940	DVR TEST	ON	View	Check	Edit Delete
4	teajun		11	OFF	View	Check	Edit Delete
5	tj1234	SNS-400	위치	OFF	View	Check	Edit Delete

[제품등록하기](#)

- Product Registration (Check ID availability)

Product Registration

My iPOLIS > Product Registration

* Mandatory Information

http://www.samsungipolis.com/ [AVAILABILITY](#)

ID(domain) *

- Create an ID of 4 to 12 characters in length containing letters A-Z or numbers 0-9.
- You should have exactly same ID with the
- Make sure the correct ID and click the item
- You may not able to change the initial dom

PASSWORD *

PASSWORD CHECK *

CLASSIFICATION * --- Choose ---

MODEL NUMBER * --- Choose ---

LOCATION *

- Determine the location to install the system
- Designate the installation location within 1

DESCRIPTION


- Describe product for management purpose.

[Registration >](#) [Cancel >](#)



- Information regarding the registered products may be reviewed from the list

Product List My IPOLIS > Product List

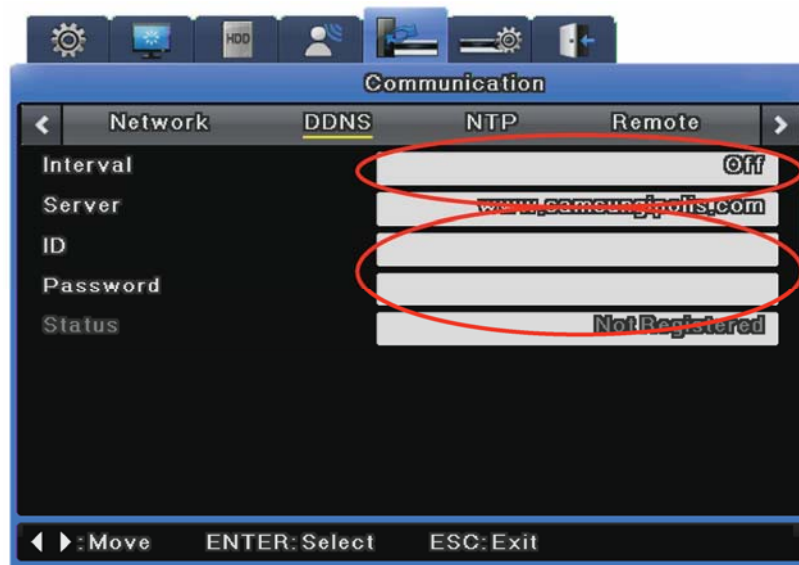
 **Current product list is displayed.**
If wanted product is not in the list, click 'Product Registration' at the bottom.

NO	ID	Model	Location	Status	View	Information	Management
1	jusun	SVR-1650	121	OFF	View	Check	Edit Delete
2	korizen	SNS-100	노보텔 일마당..	ON	View	Check	Edit Delete
3	mydvr	SVR940	DVR TEST	ON	View	Check	Edit Delete
4	teajun		11	OFF	View	Check	Edit Delete
5	ti1234	SNS-400	위차	OFF	View	Check	Edit Delete

[제품등록하기](#)

3) Configure the product for DDNS

From the DVR's Network Setup menu, configure the settings as shown below. Select Menu and Network to prompt a screen similar to the illustration shown below. Set DDNS to "On" and input the DDNS address in 'DDNS SERVER DOMAIN NAME'. (The default value is www.samsungipolis.com.) For ID and PW, use the user ID (domain) and password used in iPOLiS product registration process.




This concludes the necessary configurations to the DVR for DDNS connection.

4) The connection status of product can be checked on the product list.

- The Product list will display status 'On' for the connected device

Product List My IPOLIS > Product List

 **Current product list is displayed.**
If wanted product is not in the list, click 'Product Registration' at the bottom.

NO	ID	Model	Location	Status	View	Information	Management
1	jusun	SVR-1650	121	OFF	View	Check	Edit Delete
2	korizen	SNS-100	노보텔 앞마당..	ON	View	Check	Edit Delete
3	mydvr	SVR940	DVR TEST	ON	View	Check	Edit Delete
4	teajun		11	OFF	View	Check	Edit Delete
5	ti1234	SNS-400	위차	OFF	View	Check	Edit Delete

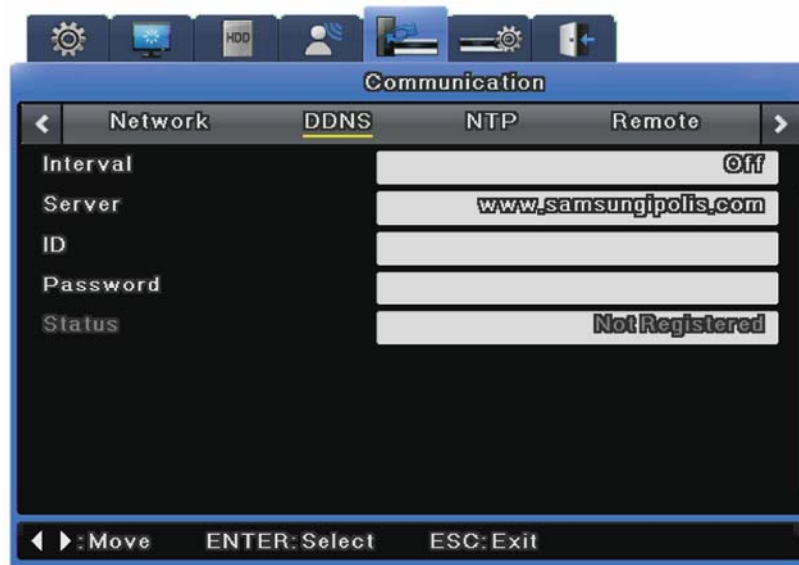
[제품등록하기](#)

[VIEW]: See the log-in page of selected product

[Edit]/ [Delete]: Edit/Delete the selected product—will prompt password confirmation dialogue

Once the product has been registered, its ID (domain) may not be changed. When the product's ID needs to be changed, the product's registration must be reset. Register the product again with the new ID.

To register a fixed IP address to a DDNS, follow the instructions shown below.



The screenshot shows a web interface for 'Communication' settings. The 'DDNS' tab is selected. The settings are as follows:

Setting	Value
Interval	Off
Server	www.samsungipolis.com
ID	
Password	
Status	Not Registered

Navigation controls at the bottom: ◀ ▶: Move, ENTER: Select, ESC: Exit

Interval

To maintain continuous registration status, a registration cycle must be assigned from "Interval". A dynamic IP address will renew the relevant data from the DDNS per each interval. If the user sets the registration interval to "Disabled" or the DVR does not upload any information over two days, information regarding the DVR will be removed from the DDNS database.

Server

This menu is used to configure the server address to be registered. The address of the SWR is www.samsungipolis.com.

ID

Use the ID for the DDNS login.

Password

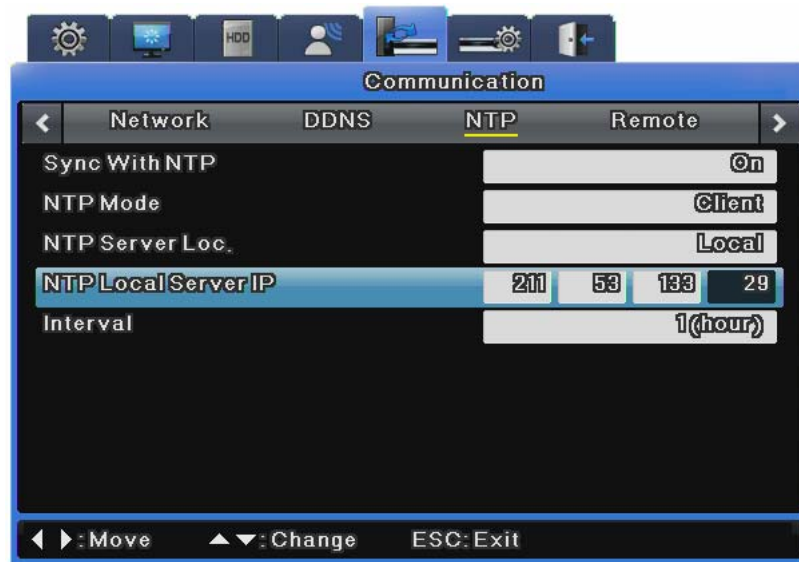
Use the password for the DDNS login.

Status

The DVR's registration status is indicated. "Not Registered" means that the DVR is not registered to the DDNS. "Date/Time & OK" means that the DVR has been registered to the DDNS.

6.8.3 NTP

Network Time Protocol (NTP) synchronizes time between devices on network. On a network, there is a server that provides the base time and clients that receive the time from the server for synchronization.



Sync With NTP

This turns NTP on or off.

NTP Mode

This sets NTP Mode to Client, Server or All.

NTP Server Location

This is enabled when NTP Mode is set to Client. This determines whether the NTP server is on a local network or on the Internet.

NTP Local Server IP

This is enabled when the NTP Server Location is set to Local and is used to set the IP of the NTP server. Enter either the IP of an NTP server on the local network or the IP of a DVR with its NTP mode set to Server.

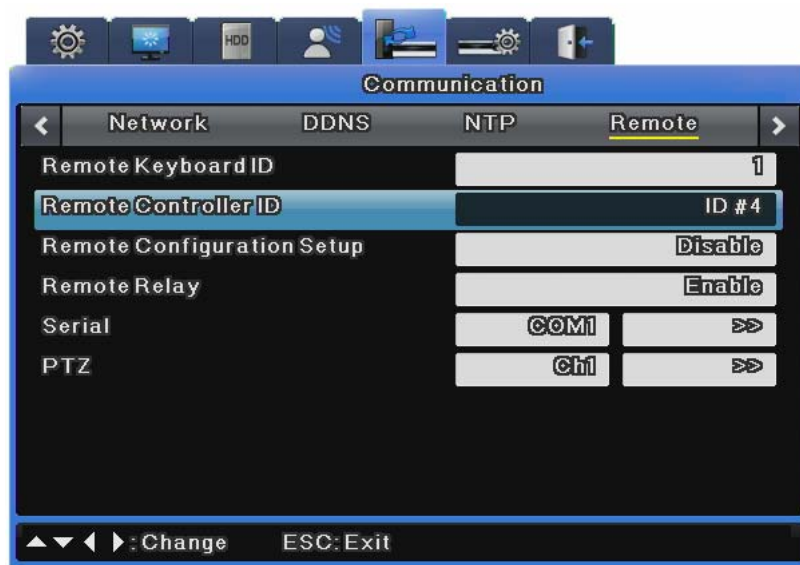
Interval

This menu is used to set the synchronization interval.



When NTP Mode is set to Client, Sync With NTP must be set to On.

6.8.4 Remote



DVR ID

This sets the address of the keyboard when operating all DVR functions with the controller buttons. The default value is "1". If one keyboard is connected to several DVRs, it might conflict with other channels, so a different value should be set for the keyboard address.

Remote Controller ID

Up to 16 remote controller IDs can be set. You can use one remote controller to operate up to 16 DVRs.

How to register the remote controller is as shown below.

- Direct the remote controller to the DVR.
- Press the [ID] button based on the specified remote controller ID.
- If the remote controller ID and the DVR ID are the same, the DVR buzzer beeps.
- The remote controller is now configured and available for use.

Remote Configuration Setup

This determines whether to use the SNM Configuration program for setup.

If "Enable" is set, SNM Configuration is available for setup. If "Disable" is set, SNM Configuration is unavailable for setup.

Remote Relay

Remote Relay is used to determine whether to use the Relay On/Off function on the SNM monitor.

If "Enable" is set, all four relays can be controlled remotely. If "Disable" is set, remote control is unavailable with the SNM Configuration.

Serial Port

A total of four serial ports are available for the DVR. Two are RS-232C and the other two are RS-485.

Device

This selects a connected device.

Interface

This sets an interface to use.

COM1 and COM3 are fixed to RS-232C, COM2 uses RS-422/485 and COM4 uses RS-485.

Baud rate/Parity/Stop Bit/Data Bit

Set this in the same way as the settings for an external device.

PTZ

PTZ Return

This determines whether to return to Home when not controlling PTZ for a certain period of time. When this is set to Off, PTZ does not return to Home even though PTZ

is not controlled for a long time. When this is set to On, PTZ returns to Home if PTZ is not controlled for a specified period of time.

PTZ Idle Time

This is used to set when PTZ returns to Home if PTZ is not controlled.

If this is set to 5 seconds, PTZ returns to Home when PTZ is not controlled for more than 5 seconds.

PTZ Port

This is set if a connected camera supports PTZ (Pan/Tilt/Zoom).

Press the [Enter] button and use the left or right arrow key or the mouse wheel to set the PTZ port connected to the channel.

Camera ID

This is set if a connected camera supports PTZ (Pan/Tilt/Zoom).

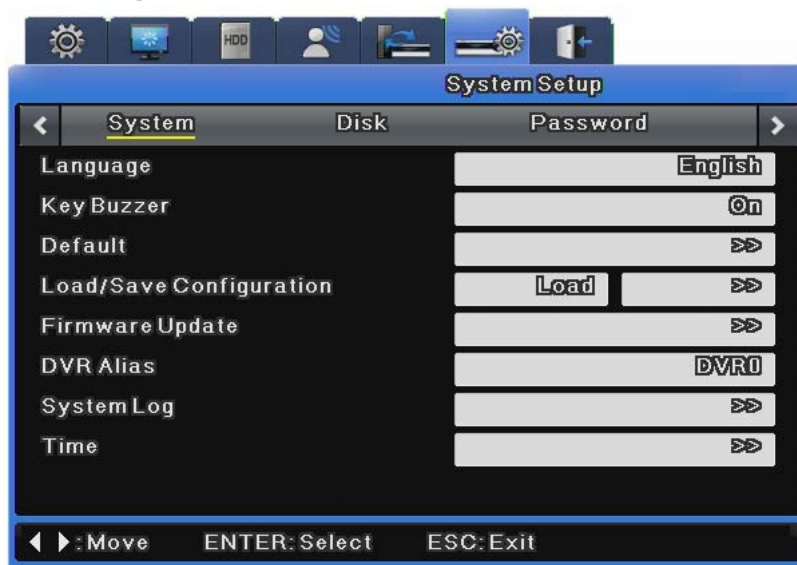
Press the [Enter] button and use the up or down arrow key or the mouse wheel to set the base address of the PTZ device.



For more information on cameras supporting PTZ and how to set them up, refer to "7.4.9 PTZ Use".

6.9 System Setup

6.9.1 System Setup



Language

The OSD menu supports multiple languages. Select a language.

Key Buzzer

This determines whether to use the buzzer for the buttons on the front.

Default

This restores the factory default settings. Press the [Default] button to restore the factory default.

Load Configuration

This sends the DVR setting stored in a USB storage device to the DVR.

Save Configuration

This saves the DVR setting to a USB storage device.

Firmware Update

Save the Update Firmware for USB to USB storage and connect it to the DVR.

Select Firmware Update from System Setup and press the [Enter] button.

When a message prompting you to update appears, select [Yes] and press the [Enter] button.

After a while, a buzzer beeps and the unit reboots.

The Update Firmware for USB is provided in a "*.dat" file.

To do a firmware update through the network, run the updater executable file and click a DVR on the DVR list. When the IP, MAC address and port of the DVR are displayed, enter the password (default: 11111111) specified in SNM-128S into "Admin Password" and press the [Start Upgrade] button.

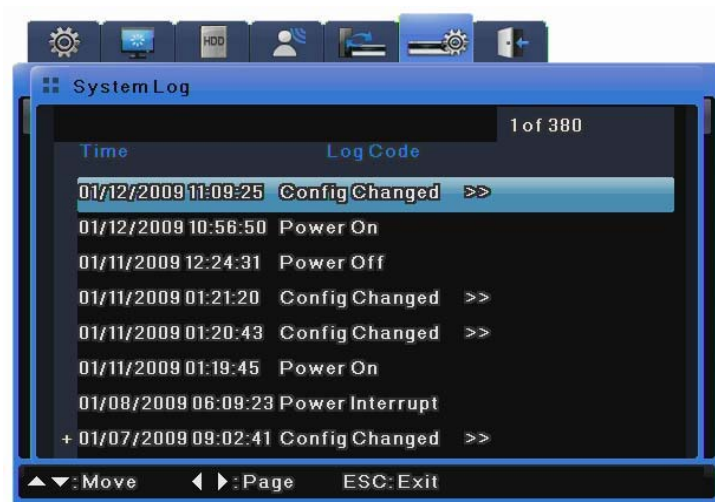
After the upgrade progress window appears, a message prompting you to reboot the unit is displayed. Select "Yes" to reboot the unit.

DVR Alias

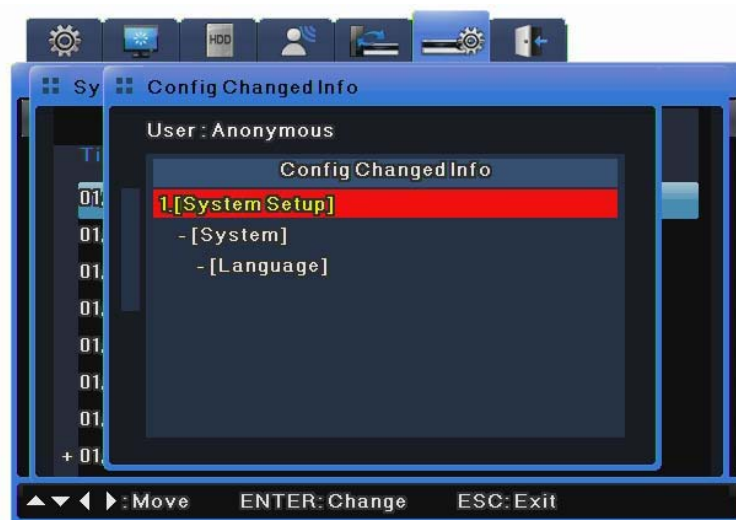
This sets a DVR alias.

System Log

The system logs various events including changing menu settings, turning the power on or off, changing the time zone, turning HDD on or off, using the Copy function, and when system events occur.



You can check log details with the >> icon by pressing the Enter button or scrolling the mouse wheel.



Copying System Log

System logs are saved as txt-formatted files, and can be saved to a USB flash drive.

To save system logs to a USB drive, insert the drive into a USB port, open the System Log list.

And then press the "COPY" button on the front.



The data will be saved as "Model Name_System Log_Date&Time.txt."

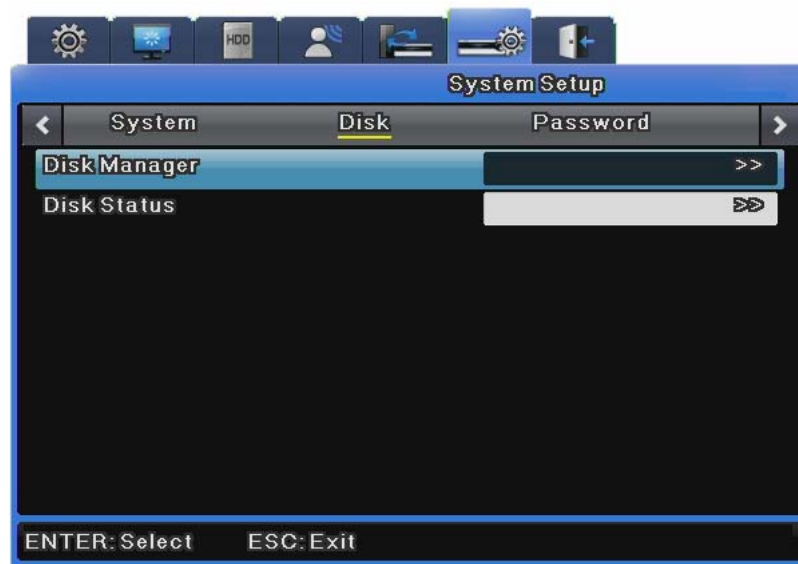
Time

This is used to set the time zone, date format, and time for the DVR.

Daylight Saving needs to be set depending upon the region.

6.9.2 Disk

This section describes how to add, remove, or format internal and external hard disks.



Disk Manager

Disk Manager is used to manage internal and external HDDs.
It manages HDD status, bad blocks, size, enabled, disabled, etc.



- Type** : Displays disk locations and types.
Int A (Internal A HDD), Int B (Internal B HDD), Ext (External HDD)
- Model** : Displays HDD models.
- Bad Block** : Displays HDDs with bad blocks. 0 is displayed when there are no problems. Nothing is displayed for HDDs not in use.
- Size(MB)** : Displays HDD sizes in MB.
- Enabled** : Enables or disables HDDs.
Yes: Enabled / No: Disabled

To change HDD to Yes

- **Enabled:** Select No and press the [Enter] button or use the mouse wheel to open the notice window with the following message.
- "Warning: This disk is usable without being formatted. Do you want to format the disk anyway?"
- Select **No** to keep the previous data stored in the HDD and change it to Enabled-Yes.
- Select **Yes** to delete the previous data stored in the HDD and change it to Enabled-Yes.

To change HDD to No

- **Enabled:** Select Yes and press the [Enter] button or use the mouse wheel to open the notice window with the following message.
- "Warning: Do you want to remove the disk?"
- Select **Yes** to open the "The disk has been removed." message and change the HDD to Enabled-No.

- The HDD is now unused.
- Select **No** to keep the HDD as it is.

Disk Status

This displays the temperature and status for each HDD.



6.9.3 Security

DVR users are divided into administrators and general users. Administrators can use all DVR features without any limitations. The maximum number of users is 10. They can only use features that they have permissions for.

Right

In Right Setup, if Check is set to all X, all users can use all features without any limitations.



If Check is set to all O, each user can use only features for which they have been given permissions.



In the image above, User 1 & 2 can use only "O" function. You can set User 1 to User 10 in the same way.

Admin Password

The default Admin Password is "11111111" and can be changed. The Admin Password should be an 8-digit number.

User Password

User 1's password is "11111111", User 2's is "22222222", and similarly for User 3 to User 9. User 10's password is "00000000". The 16 channel-DVRs do not have a [0] (zero) button so they use the [10] (ten) button instead.

Change Password

As shown in the image below, click Change P/W for a user you want to change.



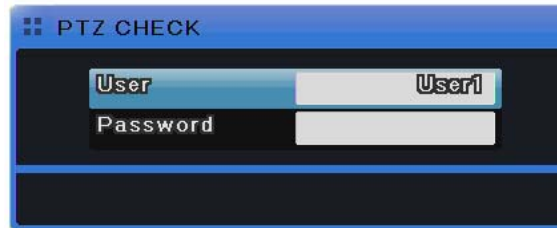
The password input window appears. Use the number buttons on the front or the character input window to enter a new password. Click the [Change] button to save it.

Clicking the [Change] button displays a popup confirmation window that prompts you to change password. Click Yes.

The password has been changed.

Permissions

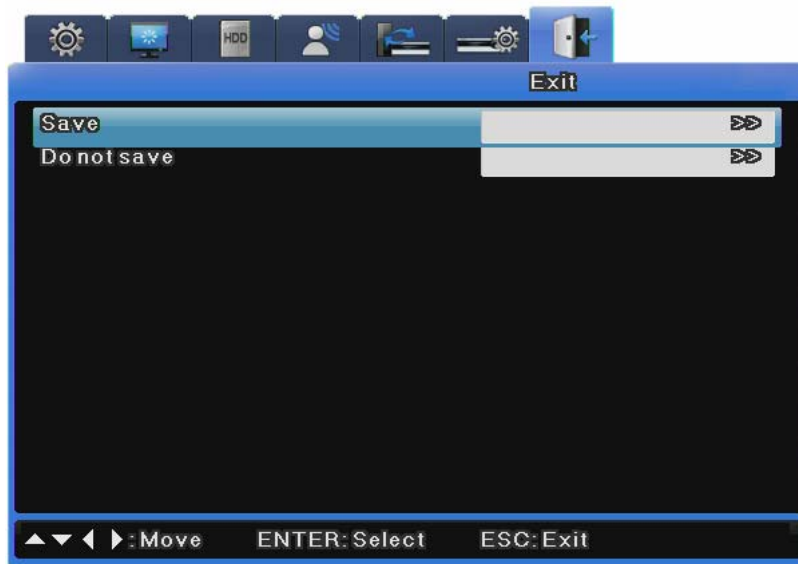
Using permission restricted features requires a password check. Execute a command to open the password input window. Select a user and enter his/her password. Now the function is available.



[Permission check]

6.10 Exit

This exits with or without saving menu settings.



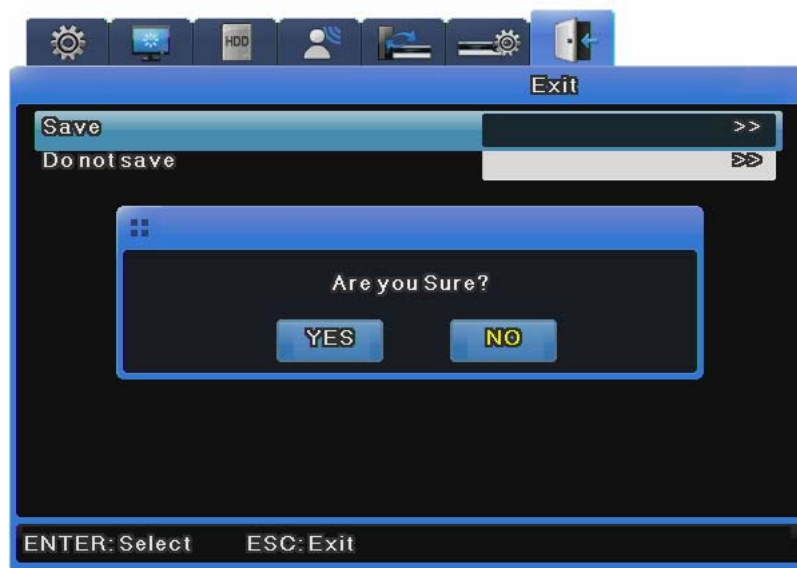
Save

This saves all settings and exits to the live screen.

Select Yes to save all settings and exit, or select No to exit without saving any settings.

Do not save

This is used to exit without saving any settings.



Chapter 7. Web Viewer

Web Viewer is a web application provided as a complement for the DVR, capable of receiving visual live feeds and playing recorded data from a distance over the Internet. Web Viewer's structure consists of the log-in page, monitoring monitor and playback monitor. Detailed descriptions of the components are as follow.

7.1 System Requirements

	Minimum	Recommended
CPU	Intel Pentium 4 / 3.0GHz	Core2duo E6750 or higher
Main Memory	1GB	2GB or higher
Video Memory	128MB	512MB or higher
Display Resolution	1280 x 1024 (with 32bit color) or higher	
HDD	1GB or higher	
OS	Windows XP Professional / Window Vista Business	
Others	DirectX 9.0 or higher	

7.2 LOGIN



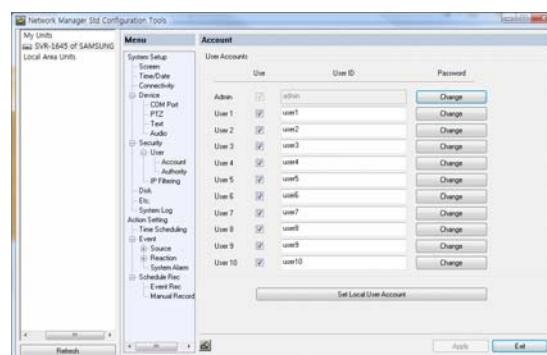
Use the IP address and port assigned to the product to access the Web Viewer Log-in page. The URL to access the page will be similar to `http://192.168.1.100:4000`. If the port value has been changed from the default value of 4000, use the changed value instead after the colons. Use the ID and password from SNM-128S and click "Login". The default ID and password are [admin] and [11111111] (eight ones). The password may be changed, but the ID may not.



To change the DVR's administrator password or issue new user ID and password, refer to "7.3 Connection User Setup".

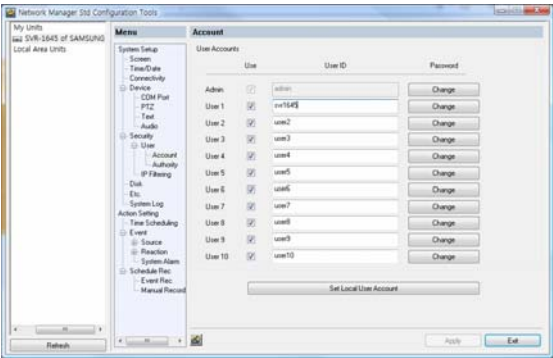
7.3 Connection User setup

To log into Web Viewer, the user ID and password must be entered to Network Manager's Configuration Tool.

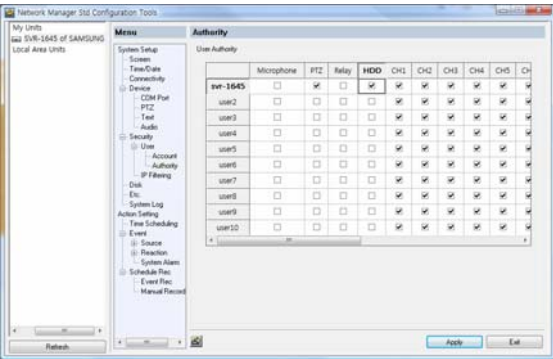


Up to 1 administrator and 10 regular user IDs and passwords may be issued. For security purposes, the administrator and regular passwords must be distinct. Uncheck the usage box of

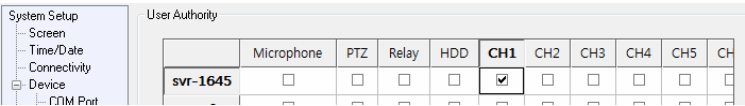
unused user accounts as well.



The illustration above displays Network Manager Configuration Tool after user IDs and passwords have been changed.



After the accounts have been configured, assign authority levels for each account. To allow playback access, check "Hard" under the user's account in Configuration Tool. Also, to allow accesses to "Microphone", "PTZ", "Relay", etc., check the relevant boxes and apply the changes. To allow access to Ch.1 only, uncheck all boxes aside Ch.1.



7.4 Supported Browser

Web Viewer is optimized to Windows Internet Explorer 6.0 and higher.

Web viewer Installer

The installation program necessary to use Web Viewer is provided at the login page. For computers without ActiveX, Web Viewer will install ActiveX to allow Web Viewer's functions to work as intended.



Please close all programs related to Network Manager before installing Web

Viewer. Failure to do so may result in malfunction.

7.5 Monitor



Once provided with the correct ID and password combination, Web Viewer will automatically move to the monitoring page. The monitoring page is used to watch live visual feed or to perform other functions allowed with the account's authority level.

Detailed explanation and description of the features of the monitoring page is as follow.

7.5.1 Screen Partition & Image Movement

The monitoring page will display a partition mode according to the model.



Using the buttons shown above, the partition mode may shift from Single, 4, 9, 13 and 16 partitions. Clicking the monitoring area will change the partition mode to Single.



Double-click the channel to expand into Single partition mode.



The screen will expand into Single partition. To return to the partition screen, double-click the monitoring area once again. In a partition mode, the placement of screens may be moved around. To move Ch.3 to where Ch.6 currently is, drag and drop the partition corresponding to Ch.3 over Ch.6 to switch their places.

7.5.2 Moving Playback

Playback Log out

Click the "Playback" button shown above to move to the playback page.

7.5.3 Channel On/Off



Channel On/Off buttons are located to the left of the page. Click the channels to toggle between On and Off. The default value for all channels is On.



The above illustration displays the result of toggling Ch.8 and 9 off. When turned off, buttons will change color and the corresponding screen will fade to black. Deactivated buttons are channels not supported by the DVR model.

7.5.4 Sensor indication

This icon indicates that a sensor has been triggered.



When triggered, its corresponding icon will turn red and the sensor ID number will be displayed on the video. Sensors that have not been triggered will remain blue.



Deactivated sensor icons are sensors not supported by the DVR model.

7.5.5 Relay operation

The product's Relay can be set to On or Off. Clicking a relay button will set the corresponding relay to On and change the button's color from blue to orange.



Deactivated relay buttons are relays not supported by the DVR model. Relay actions require a specific authority level. Consult the manual on how to configure relay authority level.

7.5.6 Microphone use



Microphone usage may be set to On or Off. The default value is Off. Clicking the button will depress the button and toggle the usage status.





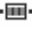

Deactivated Mic. button means that the model does not support this function.

7.5.7 Event Data

Time	Event	Message
2008.08.19 06:49:22	12 On	CH1 - Motion Detected
2008.08.19 06:57:15	12 On	CH12 - Motion Detected
2008.08.19 06:57:10	14 On	14 - Sensor Input
2008.08.19 06:57:10	13 On	13 - Sensor Input

A real-time log of event information is displayed below the monitoring page. Items found in this log are as shown below. (Table Event Icon)

Button	Function
	Change setup
	Motion detection
	Sensor

	Relay On
	V-loss
	Text Input
	User Login

7.5.8 Video Recording & Video Storage

7.5.8.1 Video Recording

To record the visual data from the monitoring mode, select the channel, right-click and select "Rec Start". Up to 10 minutes of video may be recorded in this manner. If a Quick Recording operation is executed, the duration of the recording will be displayed on the



Selecting "Rec Stop" while recording will conclude the recording operation. A dialogue window regarding the file location will be prompted and the user may save the file in any desired directory. The recording will save as a .re4 file, which can be played in NETWORK MANAGER Playback Program or a Mini-Player.

7.5.8.2 Save Image

The visual image may be saved as a .jpg, .bmp or .eye file and will save the frame currently displayed on the monitoring screen. To save an image, right-click the channel to save image from and select "Save As". To confirm the saving operation, go to the directory the image is saved to and double-click the image.

7.5.9 PTZ Use

While monitoring, right-clicking on a channel supporting PTZ and selecting "PTZ" will allow the user to manipulate the camera position.



Pan, Tilt Control

To control PTZ, right-click the channel to manipulate and select "PTZ". A white cross will appear at the center of the screen. Click on the screen to manipulate camera position. Clicking left or right of the cross will pan the camera and above or below will tilt it. Clicking further from the camera will cause the camera to change its position faster.

Zoom, Focus Control

Placing the cursor at the left and right sides of the screen will reveal the zoom and focus slide bars. A camera unit supporting Area Zoom In will also support the Zoom Zero button. Use the slide bar to the left to zoom in and out and the right slide bar to control focus.

PTZ Home

If a preset position is configured, right-click during PTZ mode and select the desired preset position from "Goto Preset". The camera will move to the preset position. Preset positions must have been configured beforehand.

Auxiliary Operation

If a preset position has been configured, the pop-up menu will also contain "Auxiliary". Selecting the item will perform the assigned action.



For detailed explanation of the PTZ function and the list of supported cameras, please refer to "4.8 Manipulating PTZ".

7.5.10 Audio Use



If a channel is paired with an audio channel, right-clicking the visual and selecting "Listen" from the pop-up menu will activate audio input. Also, to listen to the audio signal, Mute also needs to be unchecked.

7.5.11 Image Channel Close



Clicking the channel buttons to the left of the screen will disconnect the visual connection and fade to black. To reconnect the channel, click the off channel button again.

7.6 Playback



Recorded data can be reviewed in the playback mode. Only users with HDD access may use this mode. The playback mode uses 16 Partition screens and supports searches by time, calendar and cycle. Also, paused streams may be printed or saved as .bmp image files. Detailed explanation and description of the features of the playback page is as follow.

7.6.1 Screen Division & Channel Change



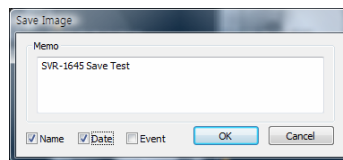
Playback supports 1, 4, 9 and 16 Partition modes. Use the menu (shown above) at the top of the page to choose a partition mode. When the monitoring screen is displaying Channel 1 through 4 in 4 in 4 Partition mode, clicking ">>" button will display the next four channels. To return to the previous four channels, click "<<".



7.6.2 Image Recording



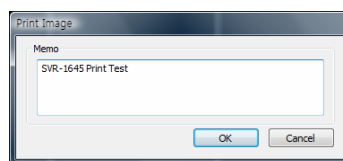
A frame from a playback can be saved as a .bmp image file. Click the channel to capture and click "Save".



A Save Image dialogue window will pop up. A brief memo on the image can be saved with it. Click "OK" to prompt save location window.

7.6.3 Print

Printing a channel is similar to capturing a frame. Click the channel to print and click "Print".



Type the relevant memo and click "OK" to print the image. The print will contain the printing date, channel name, recording date, event and memo.

7.6.4 Move to Web Monitor

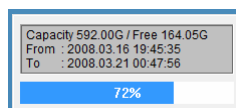


To move to Web Monitor, click "Monitor" at the top left of the page.

7.6.5 Channel On/Off

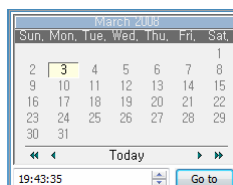
This function is identical to the Web Monitor counterpart. The Channel On/Off buttons are at the right side of the page and clicking them will turn the channels on and off. The default value is On. Deactivated channel buttons are not supported by the DVR model.

7.6.6 Recording Duration & Recording Size Check

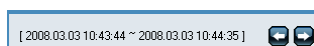


This menu displays used and remaining spaces in the HDD. It also displays the total recording duration. HDD usage is expressed as a percentage.

7.6.7 Calendar Search



Days with recordings are activated as black buttons and days without recordings are gray and deactivated. To review the recording, select the date and time of the recording and click to play the recording from the specified timeframe.



Clicking "Go To ()" will display the timeframe of 24 hours beginning from the date and time specified above at the bottom left. Click "24h" to adjust the timeframe.

7.6.8 Playback Toolbar



- ① Displays the recording duration.
- ② Shifts through the time frame by an interval set by (5).
- ③ From left to right: "Move back 1 frame", "Play backward", "Pause", "Play" and "Move forward 1 frame"
- ④ Sets the standard video speed. Click the button and choose from 0.5x, 1x, 2x, 4x, 16x, 32x, 64x and All.
- ⑤ Sets the shift interval. Click the button and choose from 10 min, 30 min, 1 hour, 3 hour, 6 hour, 12 hour and 24 hour.

- ⑥ Toggles DirectX usage. If enabled, the video will be drawn with DirectDraw and improve the quality depending on the PC's specification.
- ⑦ Controls the volume

Trouble Shooting

1. DVR is not booting up

- Check the power supply
- Check the power cord

2. Monitor won't display anything

- Check the monitor's power supply
- Check the connection between the DVR and the monitor
- Check the monitor's cable port
- Check whether DVR is turned on
- If the images are in black and white, check the camera type (NTSC/PAL) and reboot

3. Some channels are dead

- Check the camera's power supply
- Check the camera's input status
- Check the DVR's input port
- Check the Activity setting under the Screen menu
- Check the Covert setting under the Monitor menu

4. The video won't record

- Check for the HDD connection status from Disk Manager
- Check the Recording settings

5. The recordings won't play

- Check the Recording settings
- Check the button activity

6. Images are too dark or bright

- Check the camera's configuration
- Separate the visual input cable from power supplies
- Check the Brightness and Contrast settings under the Screen menu

7. The remote won't work

- Check the batteries

- Check the remote's ID
- Check the remote's specification

8. The buttons aren't working

- Check the DVR's power supply
- Check the Screen Lock setting

9. The DVR won't connect to the network

- Check whether the network cable is connected properly
- Check the DVR's IP
- Check the PC's IP
- Ping Test
- Check the PC's specification if Web Viewer will not run properly

10. Cases to contact purchasing agency

If the following cases occur, immediately cease the product operation, shut off the power supply and take the console to the purchasing agency for repair.

- The product malfunctions during operation (Ex.: Strange noise, smell, smoke, etc.)
- The power cable or the connector has been damaged.
- The product has been flooded.
- The product has been spilled on.
- The product will not function as stated in this document.
- The product was severely damaged due to physical shock.
- A stark change in performances has been noticed.

Compatible HDD List

Seagate Technology		Western Digital	
Capacity	Model	Capacity	Model
1000GB	ST31000340SV	1000GB	WD10EVCS
750GB	ST3750840SCE	750GB	WD7500AVCS
500GB	ST3500830SCE	500GB	WD5000AVJS
250GB	ST3250820SCE	250GB	WD2500AVJS

Compatible Media List

DVD-R manufacture	CD-R manufacture
Mitsubishi(Exhortation 16X)	Mitsubishi(Exhortation 16X)
TDK(Exhortation 16X)	TDK(Exhortation 16X)
Imation(Exhortation 16X)	Imation(Exhortation 16X)
Sony(Exhortation 16X)	Sony(Exhortation 16X)

Specification

Item		Description
Display		
Video	Inputs	SVR-3200 : 32 composite video 0.5–2 Vpp, 75 ohm automatic termination SVR-1680/1660/1645 : 16 composite video 0.5–2 Vpp, 75 ohm automatic termination SVR-960/945 : 9 composite video 0.5–2 Vpp, 75 ohm automatic termination
	Resolution	704x480 NTSC
Live	Frame rate	SVR-3200 : 960fps SVR-1680/1660/1645 : 480fps SVR-960/945 : 270fps
	Resolution	704x480 NTSC, 704x576 PAL
	Multi Screen	SVR-3200/1680/1660/1645 : 1/4/9/10/16 SVR-960/945 : 1/4/9
Performance		
Recording	Compression	MPEG-4

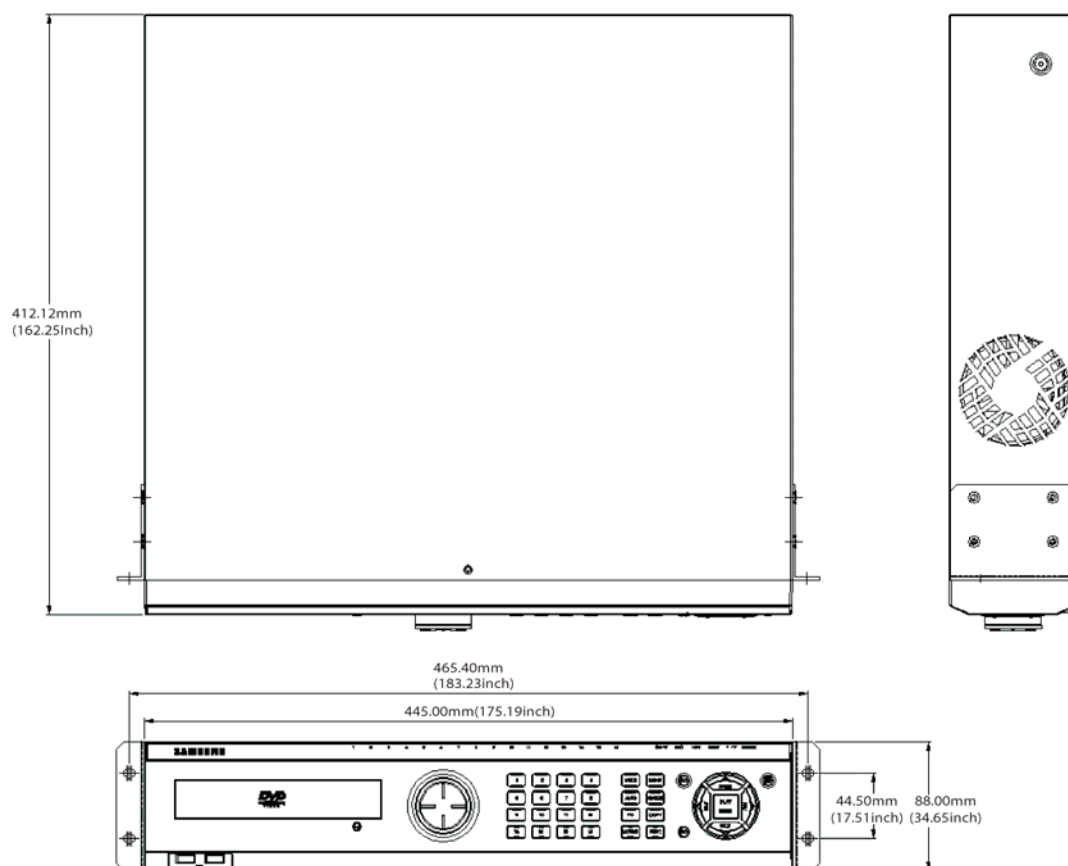
	Record Rate/NTSC	SVR-3200 : 480fps@704x480, 960fps@704x240, 960fps@352x240 SVR-1680 : 480fps@704x480, 480fps@704x240, 480fps@352 x 240 SVR-1660/1645 : 120fps@704x480, 240fps@704x240, 480fps@352x240 SVR-960/945 : 120fps@704x480, 240fps@704x240, 270fps@352x240
	Record Rate/PAL	SVR-3200 : 400fps@704x576, 960fps@704x288, 960fps@352x288 SVR-1680 : 400fps@704x576, 400fps@704x288, 400fps@352x288 SVR-1660/1645 : 100fps@704x576, 200fps@704x288, 400fps@352x288 SVR-960/945 : 100fps@704x576, 200fps@704x288, 225fps@352x288
	Mode	Manual, Schedule, Event, Emergency
	Overwrite modes	Continuous
	Pre-Event	Up to 5 sec.
	Post-Event	Up to 60 sec.
Search & Playback	Search mode	Date/time, Event, Calendar, Thumbnail, Bookmark Text(Exclusive viewer)
	Frame rate	480 fps D1 NTSC, 400 fps D1 PAL
	Playback function	REW, FWD, Frame advance (control keys and jog shuttle)
Network	Transmission speed	SVR-3200/1680 : 16 Mbps SVR-1660/1645/960/945 : 9 Mbps
	Bandwidth control	Automatic
	Multi Stream	MPEG-4(Dual Streams)/JPEG
	Remote Users	Up to 10 simultaneous users
	Protocol support	TCP/IP, DHCP, DNS, DDNS, HTTP, ARP, ICMP and NTP
	Monitoring	CMS Software(SNM-128S/P), Built-in web server
Storage	Maximum Capacity	SVR-3200/1680/1660 : 16 TB

		SVR-1645/960/945 : 8 TB
	Internal HDD	SVR-3200/1680/1660 : 4 HDD SVR-1645/960/945 : 2 HDD
	External HDD	SVR-3200/1680/1660 : External eSATA 2 port SVR-1645/960/945 : External eSATA 1 port
	DVD Writer (Back-up)	DVD-R / CD-R
	USB (Back-up)	2 External USB Ports(USB 2.0)
	File Format (Back-up)	BMP, AVI, Proprietary format / JPG(Exclusive viewer)
Security	Password Protection	10 User Level
	Data Authentication	Watermark
Interface		
Monitors	VGA	Analog RGB 800x600, 1024x768, 1280x1024 resolution
	Main Composite	BNC, 1 Vp-p, 75 ohm, Multi-screen, Menu, Playback
	Sub Composite	Monitor2~4 : SVR-3200/1680(Menu, Event Pop-up, Covert, Display Switching) Sport : SVR-1660/1645/960/945(event Pop-up, Display switching), 1 Vp-p, 75 ohm
	Loop Outputs	SVR-3200 : None SVR-1680/1660/1645 : 16 Output, 1 Vpp, 75 ohm SVR-960/945 : 9 Output, 1 Vpp, 75 ohm
Audio	Inputs	SVR-3200/1680/1660/1645 : 16 input, 30k ohm SVR-960/945 : 9 input
	Output	1 line, 100k ohm
	Compression	ADPCM
	Sampling rate	16 kHz
Alarm	Inputs	SVR-3200/1680/1660/1645 : 16 Input, NO/NC SVR-960/945 : 9 Input
	Outputs	Screw terminal 4 relay outputs, NO/NC
	Remote notification	Notification via e-mail
Connections	Ethernet	RJ45 10/100 Base-T
	Serial interface	RS232
	PTZ control interface	SVR-3200/1680/1660 : RS485/RS422 SVR-1645/960/945 : None, RS422, RS485 2 ea
	PTZ Keyboard	RS485, max. signal voltage ± 12 V

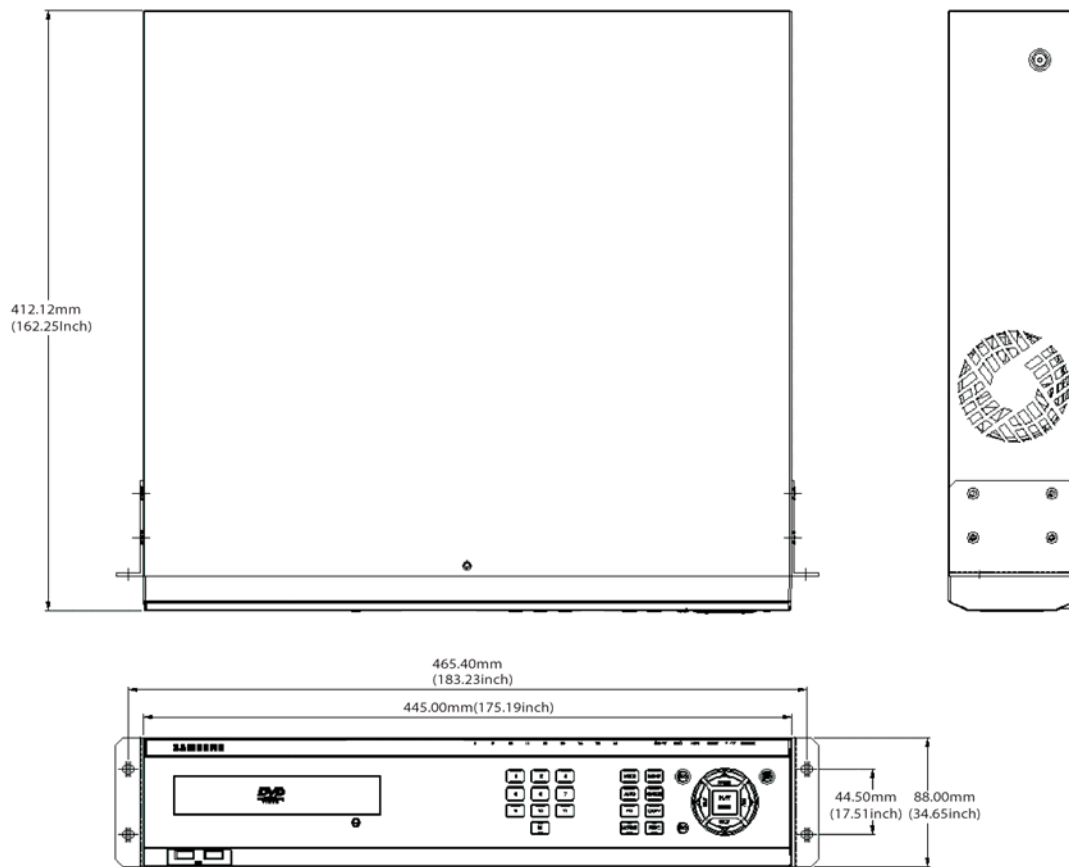
	USB	2 USB 2.0 ports
	eSATA	SVR-3200/1680/1660 : External eSATA 2 port SVR-1645/960/945 : External eSATA 1 port
	Application Support	ATM/POS, Mouse, Remote Controller
Dome Protocols	Supported PTZ cameras	Samsung Techwin, Pelco D, Pelco P, Panasonic, Bosch, SEC
General		
Electrical	Input Voltage	100 to 240 VAC \pm 10%; 50/60 Hz, Auto-ranging
	Power consumption	Max. 65 W (with 1x HDD) Max. 88 W (with 2x HDD) Max. 90 W (with 4x HDD)
Environmental	Operating Temperature	+5°C to +40°C (+32°F to +104°F)
	Operating Humidity	0% RH to 60% RH
Mechanical	Dimensions (W x H x D)	445 x 88 x 388 mm (17.5 x 3.5 x 15.3 in) SVR-945 : 300 x 88 x 302 mm(118.11 x 34.65 x 130.7 in)
	Weight (1x hard disks)	Approx. 10 kg (22.1 lb), SVR-945 : 5 kg (11 lb)
	Rack mount kit	For mounting one unit in an EIA 19-inch rack (SVR-945 Stand type)
Language		English, Korean *Language will be added to next firmware version.

Dimensions

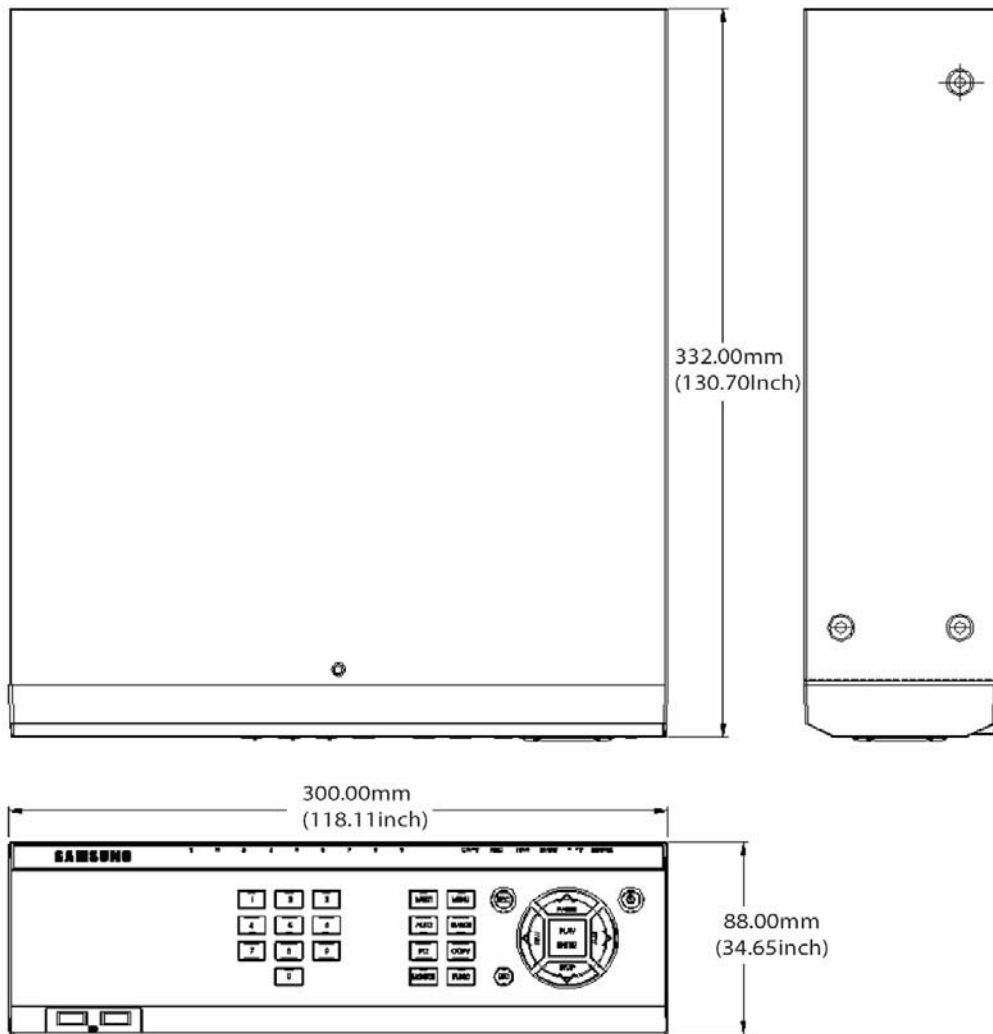
SVR-3200, SVR-1680, SVR-1660, SVR-1645



SVR-960



SVR-945



SAMSUNG TECHWIN



• SALES NETWORK

SAMSUNG TECHWIN CO.,LTD.

145-3, Sangdaewon-dong, Jungwon-gu, Seongnam-si, Gyeonggi-do, 462-120, Korea
TEL : +82-31-740-8151~8 FAX : +82-31-740-8145

SAMSUNG TECHWIN EUROPE CO., LTD.

Samsung House, 1000 Hillswood Drive, Hillswood Business Park Chertsey, Surrey, UNITED KINGDOM KT16 0PS
TEL : +44-1932-45-5308 FAX : +44-1932-45-5325

SAMSUNG TECHWIN AMERICA Inc.

1480 Charles Willard St. Carson, CA 90746, UNITED STATES
TEL : +1-310-632-1234 FAX : +1-310-632-2195
