

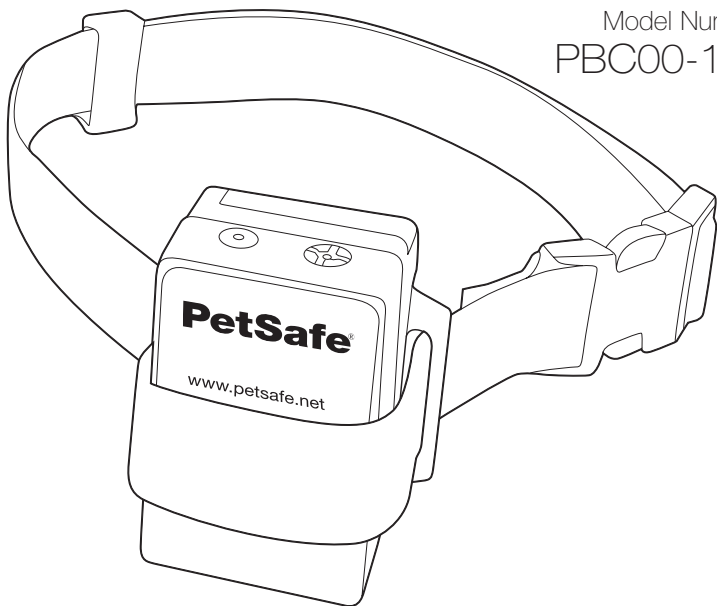


protect. **teach.** love.

Anti-Bark Spray Collar™

operating and training guide

Model Number
PBC00-13912



PLEASE READ THIS ENTIRE GUIDE BEFORE BEGINNING

Important Safety Information

Explanation of Attention Words and Symbols used in this guide



This is the safety alert symbol. It is used to alert you to potential personal injury hazards. Obey all safety messages that follow this symbol to avoid possible injury or death.

⚠ WARNING

WARNING indicates a hazardous situation which, if not avoided, could result in death or serious injury.

⚠ CAUTION

CAUTION, used with the safety alert symbol, indicates a hazardous situation which, if not avoided, could result in minor or moderate injury.

CAUTION

CAUTION, used without the safety alert symbol, indicates a hazardous situation which, if not avoided, could result in harm to your pet.

⚠ WARNING

Not for use with aggressive dogs. Do not use this product if your dog is aggressive, or if your dog is prone to aggressive behavior. Aggressive dogs can cause severe injury and even death to their owner and others. If you are unsure whether this product is appropriate for your dog, please consult your veterinarian or certified trainer.

AEROSOLS:

- Keep out of reach of children.
- Contents of the refill can and the spray collar are under pressure.
- Use only in a well ventilated area. Use only as directed.
- May explode if heated, do not heat. Do not expose to temperatures over 113°F or 45°C.
- Do not burn. Do not dispose of in fire, even when empty.
- Keep out of direct sunlight.
- Do not leave the aerosol can in a vehicle where temperature could exceed 113°F or 45°C.
- Store in a cool location.
- Keep away from sparks or flame. Do not smoke while refilling.
- Do not puncture. Contact of liquid propellant with skin may cause frostbite.
- Do not ingest. In case of accident, seek medical care. If swallowed, call a poison control center immediately.

⚠ CAUTION

Do not expose the device to freezing temperatures -32°F or 0°C or to conditions warmer than 113°F or 45°C. Do not leave the unit in direct sunlight. Never leave the unit in a car where the device can heat up to high temperatures 113°F or 45°C.

The PetSafe® Anti-Bark Spray Collar™ is not a toy. Keep it away from the reach of children. Use it only for its bark stopping purpose.

CAUTION

Risk of skin damage. Please read and follow the instructions in this manual. Proper fit of the collar is important. A collar worn for too long or made too tight on the pet's neck may cause skin damage. Ranging from redness to pressure ulcers; this condition is commonly known as bed sores.

- Avoid leaving the collar on the dog for more than 12 hours per day.
- When possible, reposition the collar on the pet's neck every 1 to 2 hours.
- Check the fit to prevent excessive pressure; follow the instructions in this manual.
- Never connect a lead to the electronic collar.
- When using a separate collar for a lead, don't put pressure on the electronic collar.

- Wash the dog's neck area and the contact area of the collar weekly with a damp cloth.
- Examine the contact area daily for signs of a rash or a sore.
- If a rash or sore is found, discontinue use of the collar until the skin has healed.
- If the condition persists beyond 48 hours, see your veterinarian.
- For additional information on bed sores and pressure necrosis, please visit our website.

These steps will help keep your pet safe and comfortable. Some pets are sensitive to contact pressure. You may find after some time that your pet is very tolerant of the collar. If so, you may relax some of these precautions. It is important to continue daily checks of the contact area. If redness or sores are found, discontinue use until the skin has fully healed.

PetSafe® Bark Control collars must be used only on healthy dogs. We recommend that you take your dog to a veterinarian before using the collar if he is not in good health.

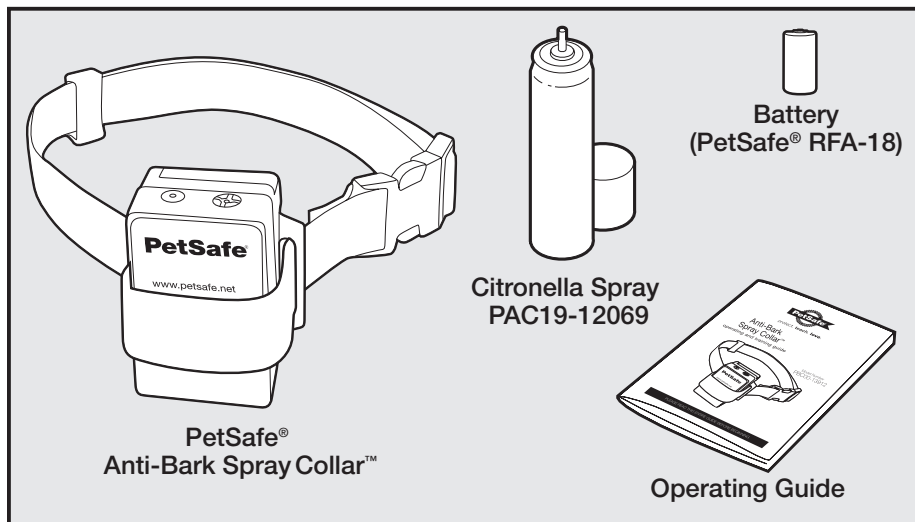
Thank you for choosing the PetSafe® brand. You and your pet deserve a companionship that includes memorable moments and a shared understanding together. Our products and training tools promote a lifestyle of protection, teaching, and love—essentials that influence memories for a lifetime. If you have any questions about our products or training your pet, please visit our website at www.petsafe.net or contact our Customer Care Center at 1-800-732-2677.

To get the most protection out of your warranty, please register your product within 30 days at www.petsafe.net. By registering and keeping your receipt, you will enjoy the product's full warranty and should you ever need to call the Customer Care Center, we will be able to help you faster. Most importantly, PetSafe® will never give or sell your valuable information to anyone. Complete warranty information is available online at www.petsafe.net.

Table of Contents

Components.....	5
Other Items You May Need	5
How the System Works	5
Key Definitions	5
Fit the Bark Control Collar	6
Preparing the Collar.....	6
On/Off.....	7
To Fill and Refill the Spray	7
Ensure a Proper Spray Pattern.....	8
What to Expect During Use of the Spray Bark Control Collar.....	8
Tips and Maintenance	8
Frequently Asked Questions	10
Troubleshooting	10
Customer Care International	10
Terms of Use and Limitation of Liability	11
Compliance	11
Perchlorate Battery.....	12

Components



Other Items You May Need

- Scissors
- Lighter

How the System Works

The Anti-Bark Spray Collar™ uses a proven method to deliver a harmless burst of citronella spray to interrupt your dog's barking. Citronella is a unique scent that most dogs don't normally encounter. It's non-offensive to humans, yet unusual enough to distract your dog and interrupt the unwanted behavior.

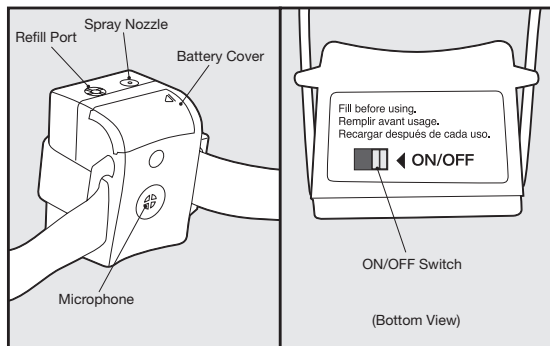
Key Definitions

Spray Nozzle: Where the spray ejects when your dog's bark is detected.

Microphone: Detects the sound of your dog's bark.

Refill Port: Where the spray is refilled.

On/Off Switch: Turns the collar on and off.

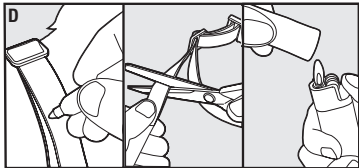
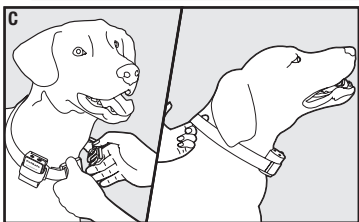
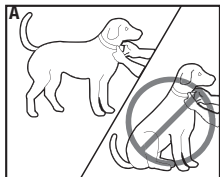


Fit the Bark Control Collar

Important: The proper fit and placement of your bark control collar is important for effective operation.

To assure a proper fit, please follow these steps:

1. Make sure that the bark control collar is turned off.
2. Start with your dog standing comfortably (A).
3. Place the collar on your dog's neck close to the ears. Center the Microphone on your dog's neck, touching the skin (B). Make sure the PetSafe® logo in the front of the unit is upright and the Spray Nozzle is pointed toward your dog's snout.
4. Check the tightness of the bark control collar by inserting one finger between the collar and your dog's neck (C). The fit should be snug but not constricting.
5. Allow your dog to wear the collar for several minutes, then recheck the fit. Check the fit again as your dog becomes more comfortable with the Bark Control Collar.
6. Trim the collar as follows: (D)
 - a. Mark the desired length of the collar with a pen. Allow for growth if your dog is young or grows a thick winter coat.
 - b. Remove the Bark Control Collar from your dog and cut off excess.
 - c. Before placing the Bark Control Collar back onto your dog, seal the edge of the cut collar by applying a flame along the frayed edge.



CAUTION

The Bark Control Collar should not be worn for more than 12 hours out of every 24-hour period. Leaving the collar on too long could lead to Skin Irritation. Please refer to page 2 for additional information.

Preparing the Collar

To Insert and Remove the Battery

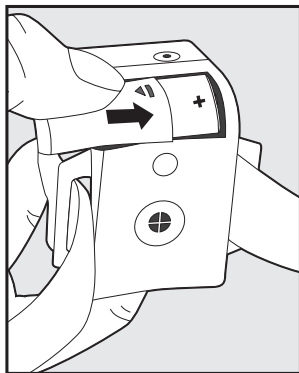
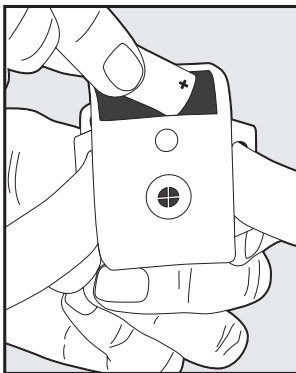
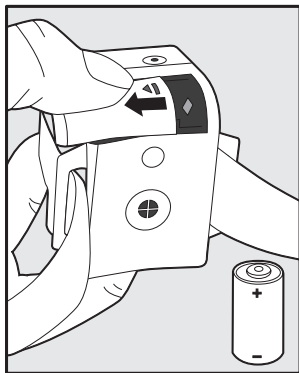
Note: Do not install the battery while the bark control collar is on your dog.

1. Slide off the battery cover.
2. Insert the 6-volt alkaline battery.
3. Keep the polarity in mind (+ and -).
4. Slide the cover back on.

A replacement battery (6-volt alkaline) can be found at many retailers. Contact the Customer Care Center or visit our web site to locate a retailer near you.

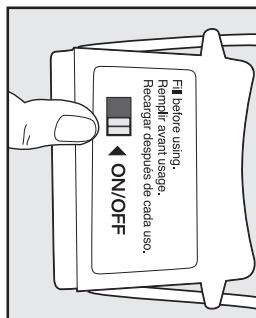
Battery Life

Average battery life is 2 to 4 months, depending on how often your dog barks. However, due to greater use during your dog's training, your first battery may not last as long as replacement batteries.



On/Off

- To activate the unit, slide the On/Off switch to the ON position.
- To turn the unit off, slide the switch to the OFF position
- Before every use, it is best to test the device. Holding the unit about 3-4 inches from your face, point the spray nozzle away from you and blow into the Microphone.

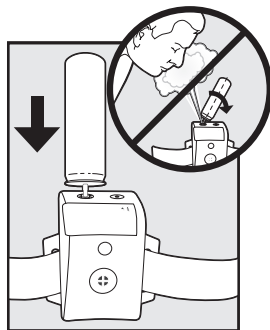


To Fill and Refill the Spray

- Remove the collar from your dog and turn the unit OFF.
- Set the device on a flat surface with the Refill Port (deepest cavity) turned upwards.
- Hold the Refill Spray can upright and firmly press the nozzle down into the Refill Port. Hold down firmly for 10 seconds and release. Press down for another 10 seconds, then release again. You cannot overfill the device.

Note: If spray leaks out, you may need to press harder to complete the seal.

- Turn the unit ON.



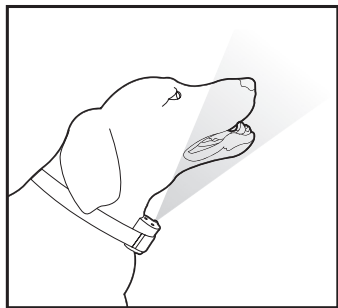
Ensure a Proper Spray Pattern

For the PetSafe® Anti-Bark Spray Collar™ to perform properly, the nozzle must be positioned correctly and there must be a clear path from the Spray Nozzle to your dog's snout. Follow these steps:

1. Make sure the Spray Nozzle is upright and pointing towards the dog's snout.
2. For long-haired dogs, it may be necessary to trim the neck hairs along the path of the spray. It is important that the spray reaches the dog's snout to be effective.

CAUTION

Do not shave the pet's neck as this may increase the risk of skin irritation.



What to Expect During Use of the Spray Bark Control Collar

Important: Do not leave your dog alone the first few times he wears the Bark Control Collar.

Place the Anti-Bark Spray Collar™ properly on your dog and wait nearby until he barks. Most dogs will understand very quickly that the bark control collar is disrupting their urge to bark, and will relax and stop barking. Because the burst of spray from the bark control collar may be surprising or startling at first, some dogs may bark more at the initial correction.

On rare occasions, a dog may get into a bark-spray-bark-spray cycle. If this happens, reassure your dog with calm, soothing tones. As your dog relaxes, he will understand that if he becomes quiet, he will not receive any more spray bursts. The small minority of dogs that have this reaction should only have it the first time they wear the spray bark control collar.

You should notice a reduction in your dog's barking within the first couple of days that he wears the Anti-Bark Spray Collar™. At this point, it is important to remember the learning process is still not complete. Dogs will "test" this new learning experience and will increase their attempts to bark. This usually occurs during the second week a dog wears the bark control collar. If this does occur, remain consistent and do not alter your use of the bark control collar. You must place the collar on your dog in every situation when you expect him to be quiet. If your dog is not wearing the collar, he may resume barking and his learning would suffer a setback.

Tips and Maintenance

- Before playing with your dog, turn the unit off and remove the bark control collar. The activity may cause your dog to bark, which could lead to him associating the play with the burst of spray.
- The collar must be filled to maximum capacity before placing it around your dog's neck.
- Never fill the device while your dog is wearing it because it may damage the Refill Port.
- To ensure that your dog does not make the connection between you and the spray collar, don't let him see you prepare the device for the first try, or for subsequent use. Keep your dog away while you prepare the device, as well as when you fill it or change the battery.

- It is important that your dog's hair doesn't block the Spray Nozzle. Try tying a bandanna (handkerchief) around your dog's neck, then place the spray collar above it. If necessary, you may also consider trimming a little of the long hair around the dog's neck for better spray effect.
- Remove all other collars with metallic parts or tags. These could create noise that may needlessly activate the spraying device.
- Avoid letting your dog wear the device with an empty reservoir. Make sure it is always full.
- Turn OFF the device while not in use.
- The PetSafe® Anti-Bark Spray Collar™ should only be used with pets that are over 6 months of age.
- Your spray collar is splash-proof but not completely watertight. Remove it before letting your dog go for a swim.
- Keep the device clean at all times. Do not immerse it in water when cleaning. Simply use a dry cloth to wipe away dirt. You may lightly brush with an old toothbrush if dirt accumulated in front of the Microphone grid.
- Do not leave your device unattended where your dog could accidentally damage it through chewing.
- Ensure the batteries you are using are still adequate to operate the device. The device requires 6-volt alkaline batteries, readily available from www.petsafe.net. You may also use longer life lithium batteries.
- The Microphone is calibrated so it won't be activated by nearby sounds. However, the barking of another dog at close range could cause the device to spray.
- Never fill the PetSafe® Anti-Bark Spray Collar™ with any substance other than the one provided by the manufacturer. PetSafe® Citronella and Unscented Spray Refills are available at www.petsafe.net. Using another substance, as well as opening the device, will void the manufacturer's warranty.
- Always make sure that you are not mistakenly trying to fill the reservoir through the Microphone opening. This would damage the device.
- If your dog tries to take off the device, a harness can be used instead of the collar provided in the kit.
- Do not attempt to repair the device yourself. This will invalidate the warranty and make repairs more difficult.

Frequently Asked Questions

Is the spray harmful?	<ul style="list-style-type: none">• No. The spray uses a citronella fragrance that dogs find unpleasant. It dissipates quickly and is safe for humans and pets.
Does the spray need to hit my dog's nose?	<ul style="list-style-type: none">• No. The spray is very fine and simply creates a mist in the region of the snout.
Will this work with long-haired dogs?	<ul style="list-style-type: none">• Yes. It may be necessary to trim the hair on your dog's neck so it does not block the spray from reaching his snout.

Troubleshooting

The Anti-Bark Spray Collar™ does not spray.	<ul style="list-style-type: none">• Ensure that the battery is properly installed.• Replace the battery.• Refill the spray.• Ensure the unit is turned ON.• If the bark control collar still does not spray, contact the Customer Care Center.
My bark control collar sprays, but my dog keeps barking (does not respond to the burst of spray).	<ul style="list-style-type: none">• Check to make sure the Spray Nozzle points towards the dog's snout.• Make sure your dog's hair does not block the spray. If so, trim the hair so the spray can reach the snout area.• If your dog still does not respond, contact the Customer Care Center.
When I try to refill the Citronella Spray, the spray leaks out around the Spray Nozzle.	<ul style="list-style-type: none">• Hold the spray can upright. If it is held at an angle, it will not create a good seal.• Press firmly on the spray can to create a good seal.• If the spray continues to leak, contact the Customer Care Center.

Customer Care International

USA & Canada - Tel: 800-732-2677

Monday - Friday 8 AM - 8 PM / Saturday 9 AM - 5 PM

Australia - Tel: 1800 786 608

Monday - Friday 7:30 AM - 5 PM

New Zealand - Tel: 0800 543 054

Monday - Friday 10:30 AM - 7 PM

This product has the benefit of a limited manufacturer's warranty. Details of the warranty applicable to this product and its terms can be found at www.petsafe.net and/or are available by sending a stamped addressed envelope to PetSafe® Ltd. Redthorn House, Unit 9, Chorley West Business Park, Ackhurst Road, Chorley, Lancashire PR7 1NL, United Kingdom.

Terms of Use and Limitation of Liability

1. Terms of Use

This Product is offered to you conditioned upon your acceptance without modification of the terms, conditions and notices contained herein. Usage of this product implies acceptance of all such terms, conditions, and notices.

2. Proper Use

This Product is designed for use with pets where training is desired. The specific temperament of your pet may not work with this product. We recommend that you not use this product if your pet is less than 6 lb or under 6 months old, or if your pet is aggressive. If you are unsure whether this is appropriate for your pet, please consult your veterinarian, certified trainer or contact our Customer Care Center or visit our website at www.petsafe.net.

Proper use includes reviewing the entire Operating and Training Guide provided with your product and any specific Caution statements.

3. No Unlawful or Prohibited Use

This Product is designed for use with pets only. This pet training device is not intended to harm, injure, or provoke. Using this product in a way that is not intended could result in violation of Federal, State or local laws.

4. Limitation of Liability

In no event shall Radio Systems® Corporation be liable for any direct, indirect, punitive, incidental, special or consequential damages, or any damages whatsoever arising out of or connected with the use or misuse of this Product. Buyer assumes all risks and liability from the use of this Product.

5. Modification of Terms and Conditions

Radio Systems® Corporation reserves the right to change the terms, conditions and notices under which this Product is offered.

Compliance

FCC- United States

This device complies with part 15 of the FCC Rules. Operation is subject to the following two conditions:

(1) This device may not cause harmful interference, and (2) this device must accept any interference received, including interference that may cause undesired operation.

This Class B digital apparatus complies with Canadian ICES-003. This equipment has been tested and found to comply with the limits for a Class B digital device, pursuant to Part 15 of the FCC Rules. These limits are designed to provide reasonable protection against harmful interference when the equipment is operated in a residential environment. This equipment generates, uses, and can radiate radio frequency energy and, if not installed and used in accordance with the instruction guide, may cause harmful interference to radio communications. However, there is no guarantee that interference will not occur in a practical installation. If this equipment causes harmful interference to radio or television reception, which can be determined by turning the equipment off and on, the user is encouraged to try to correct the interference by one or more of the following measures:

- Relocate the interfered receiving antenna.
- Increase the separation between the equipment and receiver.
- Connect the equipment into an outlet on a circuit different to that to which the receiver is connected.
- Contact the Customer Care Center.

IC- Canada

This Class B digital apparatus complies with Canadian ICES-003.

Cet appareil numérique de la classe B est conforme à la norme NMB-003 du Canada.

Perchlorate Battery

Perchlorate Material – special handling may apply.

See www.dtsc.ca.gov/hazardouswaste/perchlorate.

Radio Systems® Corporation
10427 PetSafe Way
Knoxville, TN 37932
1-800-732-2677
www.petsafe.net
400-1596