

Clinical proved mattresses

Care of Sweden



P | 03 6343 4825 E | sales@advancedlifecare.com.au W | advancedlifecare.com.au



Care of Sweden develops and markets high-quality mattresses for the health care sector. Our mattresses are used for pain management, pressure ulcer prevention and as an aid in the treatment of pressure ulcers. Our range offers alternating pressure mattresses, foam mattresses and bedding accessories such as pillows and cushions for pressure relief, positioning and stabilization. All products meet health care sector requirements for hygiene, quality and safety.

We have focused on care beds for over 16 years and are now one of the leading Scandinavian companies in this field. We carry out extensive testing of our products, and our staff are skilled and knowledgeable. We hold courses and lectures for

our customers on a variety of topics such as pressure relief, positioning, nutrition etc.

Comfort and safety for the patient are top priority in the development of our mattresses, but it is also important to include features and capabilities that facilitate the work of staff. We know that if a patient's condition can be improved with the aid of our products, and staff are happy with them, this will benefit the entire care chain.

For many years we have operated structured environment and quality management systems, and are certified to ISO 9001, ISO 13485 and ISO 14001.

Optimal 5zon[®]



The picture shows a mattress with Evac cover.

The complete mattress
for pressure ulcer prevention

Optimal 5zon[®]

The Optimal 5zon[®] is ideal for all healthcare environments and is used as an aid in the prevention and treatment of pressure ulcers up to and including category 2⁽¹⁾, and for pain therapy. It is a soft and flexible mattress replacement that is placed directly on the bed and replaces both the standard mattress and mattress pad.

It has very good pressure redistribution properties⁽²⁾ and is also equipped with the unique DuoCore[®] sit function. It has been designed to provide support when seated, while also offering good comfort in lying position.

Optimal 5zon[®] comes with several different options of covers.

Care of Sweden's mattresses are supplied with a four way stretch hygienic outer cover which conforms to relevant standards for hygiene⁽³⁾, quality and safety. All covers are manufactured from modern, recyclable materials and are vapour permeable⁽⁴⁾, which reduce the risk of skin maceration.

Facts

Core: HR-foam 65+50 kg/m³

Height: 14 cm

Function: Prevention and treatment up to and including category 2⁽¹⁾

Recommended user weight: 0-150 kg

Fire: EN 597-1, -2

Warranty: 3 years

Cleaning of cover: Wipe with cleaning agent and/or disinfectants.

Machine wash max 95 °C, tumble drying.



Features and Characteristics

Pressure

Highly elastic, high-quality material and a unique zone and module system gives effective pressure equalisation.

Shear forces

The mattress is specially designed to minimise the effects of shear forces.

Sit function

Our patented⁽⁵⁾ sit function DuoCore[®] is designed to give support when sitting and also to provide good comfort when lying.

Moisture

The hygienic cover is vapour permeable⁽⁴⁾, which reduces the risk of skin maceration.

Hygiene

The cover is easy to clean and has a very well documented hygienic standard⁽³⁾.

Available covers

Cover Olivia

Drip shield zip on three sides.

Evac Cover

2-piece cover with handles for evacuation. Low friction top cover is also available.

Cover Nordic

Welded seams, drip shield zip on three sides and handles on one side.

For need of non hygienic cover, please contact your distributor.

Sizes

80/85/90/105/120x200 cm and 80/85/90x210 cm.

If you need any other sizes please contact your distributor.

References

- (1) European Pressure Ulcer Advisory Panel, Quick reference guide 2009.
- (2) Examination of the shear force and the pressure relief capability, Berlincert 2009.
- (3) ISO 16603 "resistance of penetration by blood and body fluids", ISO 16604 "resistance of penetration by blood-borne pathogens", EN 14126, SS 876 00 19 "Health care textiles – Bacteria penetration – Wet".
- (4) SS-EN ISO 15496:2004, DIN 53.122.
- (5) Patent no. 008522741.



Always read the instruction for use prior to usage of the product.

Care of Sweden, Optimal 5zon and DuoCore are trademarks of Care of Sweden AB.
© Care of Sweden AB, 2013. All rights reserved. Last update: 27/11/13.



Mattress selector

- Guidelines when choosing a product
See how to choose the right mattress at:
www.careofsweden.com/mattress-selector

Optimal 5zon[®]

Optimal 5zon[®] is used in all types of health care environments for pain relief and as an aid in the prevention and treatment of pressure ulcers up to and including category 2⁽¹⁾.

Optimal 5zon[®] is delivered with a durable liquid resistant and vapour permeable⁽²⁾ hygienic cover, which is easy to clean and has a very well documented hygienic standard⁽³⁾.

(1) European Pressure Ulcer Advisory Panel, Quick reference guide 2009.

(2) SS-EN ISO 15496:2004, DIN 53.122.

(3) ISO 16603 "resistance of penetration by blood and body fluids", ISO 16604 "resistance of penetration by blood-borne pathogens", EN 14126, SS 876 00 19 "Health care textiles – Bacteria penetration – Wet".

Examination of the pressure relief capability and the shear force

(Berlin Cert, 02/09/09)



Optimal 5zon[®]/Optimal 5zon[®] BM gets highest rate, "High Pressure Relief", and is 32 % better compared to the reference mattress (patient weight of 80 kg). Even at maximum load (130 kg) the average contact pressure is below 30 mmHg.

1. Pressure Area Index (PAI)	Patient weight of 80 kg	Patient weight of 130 kg
Below 30 mmHg	100 %	96 %
Below 20 mmHg	96 %	62 %
Below 10 mmHg	51 %	31 %

2. Examination of shear forces

Maximum pulling force (Fmax)	207 N
Mean pulling force during slip-phase (Fquer)	203 N
Coefficient of sliding friction (μ G)	0,83 \pm 0,01
Horizontal stiffness (H)	8,29 \pm 0,60 N/mm

Customer evaluating

(Care of Sweden, 2007)

Care of Sweden's own customer survey of users and employees, show consistently good perceived comfort and function.

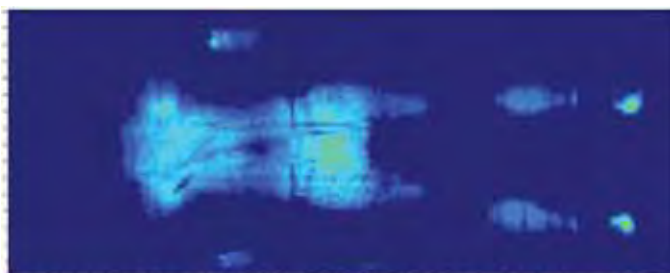
Patient's review (scale 1-5)

Comfort	4.2
Turn/Move on the mattress	3.9

Staff review (scale 1-5)

To work with the patient	4.6
To clean/make up/handle the mattress	4.4
Fulfilled expectations	4.4

Example of pressure mapping (Xsensor). Male, 90 kg, 178 cm.



Optimal Sumo



Preventative mattress replacement for bariatric use

Optimal Sumo

Optimal Sumo is used as an aid in the prevention and treatment of pressure ulcers up to category 1⁽¹⁾, and is ideal for all healthcare environments. It is a mattress replacement that has been specially designed for bariatric use.

It is equipped with our unique DuoCore[®] sit function, which provides assistance and relief when seated, as well as very

good comfort in a lying position. In addition, the DuoCore[®] is also beneficial when using a sliding board or other relocation aids.

The cover is equipped with a divisible, drip-shield zip and functional handles for simple transportation of the mattress.

Care of Sweden's mattresses are supplied with a four way stretch hygienic outer cover which conforms to relevant standards for hygiene⁽²⁾, quality and safety. All covers are manufactured from modern, recyclable materials and are vapour permeable⁽³⁾, which reduce the risk of skin maceration.

Facts

Core: HR-foam 65+50 kg/m³

Height: 15 cm

Covers: Divisible, SUMO

Function: Prevention and treatment up to and including category 1⁽¹⁾

Recommended user weight: 100-270 kg

Fire: EN 597-1, -2

Warranty: 2 years

Cleaning of cover: Wipe with cleaning agent and/or disinfectants.

Machine wash max 95 °C, tumble drying.



Features and Characteristics

User weight

For bariatric use, recommended user weight is 100-270 kg.

Pressure

Highly elastic, high-quality material and a unique zone and module system gives effective pressure equalisation.

Shear forces

The mattress is specially designed to minimise the effects of shear forces.

Sit function

Our patented⁽⁴⁾ sit function DuoCore[®] is designed to give support when sitting and also to provide very good comfort when lying.

Moisture

The hygienic cover is vapour permeable⁽³⁾, which reduces the risk of skin maceration.

Hygiene⁽²⁾

The cover is easy to clean and has a very well documented hygienic standard

Sizes

85/90/105/120x200/210 cm.

If you need any other sizes please contact your distributor.

References

(1) European Pressure Ulcer Advisory Panel, Quick reference guide 2009.

(2) ISO 16603 "resistance of penetration by blood and body fluids", ISO 16604 "resistance of penetration by blood-borne pathogens", EN 14126, SS 876 00 19 "Health care textiles – Bacteria penetration – Wet".

(3) SS-EN ISO 15496:2004, DIN 53.122.

(4) Patent no. 008522741.



Always read the instruction for use prior to usage of the product.

Care of Sweden and DuoCore are trademarks of Care of Sweden AB.

© Care of Sweden AB, 2013. All rights reserved. Last update: 27/11/13.



Mattress selector

- Guidelines when choosing a product

See how to choose the right mattress at:

www.careofsweden.com/mattress-selector

CuroCell S.A.M.®



Mattress overlay system
with very high comfort

CuroCell S.A.M.[®]

The CuroCell S.A.M.[®] is used as an aid in the prevention and treatment of pressure ulcers up to category 2⁽¹⁾, and for pain therapy. It is a static air mattress overlay system that provides very good comfort and pressure⁽²⁾ redistribution.

The mattress is made from very soft and durable materials and comes with an easy to use, very quiet pump and CPR

(rapid deflation of air). Thanks to the extra soft inner cover (accessory), the already low pressure⁽³⁾ is further reduced.

Also available is the CuroCell S.A.M.[®] CF16, which is a mattress replacement system equipped with an integrated foam core, which is placed directly onto the bed frame.

Care of Sweden's mattresses are supplied with a four way stretch hygienic outer cover which conforms to relevant standards for hygiene⁽⁴⁾, quality and safety. All covers are manufactured from modern, recyclable materials and are vapour permeable⁽⁵⁾, which reduce the risk of skin maceration.

Facts

Type: Static air mattress

Height: 10 cm

Function: Prevention and treatment up to and including category 2⁽¹⁾

Recommended user weight: 0-200 kg

Power supply: 230 V/50 Hz

Warranty: 2 years

Cleaning of cover: Wipe with cleaning agent and/or disinfectants.

Machine wash max 95 °C, tumble drying.



Features and Characteristics

- CPR function – rapid deflation
- Easy to handle and maintain
- Elastic fastening band
- Silent and energy-efficient pump
- Soft, elastic, vapour permeable⁽⁵⁾ hygienic cover
- Unique labelling
- Very good cleaning properties

Sizes

80/85/90/105/120x200/210 cm.

If you need any other sizes please contact your distributor.

Optional

- Bag for the pump
- Durable bag for transportation and storage
- Extra soft inner cover
- Hygiene cover with welded seams
- Transport function

References

(1) European Pressure Ulcer Advisory Panel, Quick reference guide 2009.

(2) Examination of the shear force and the pressure relief capability, Berlincert 2009.

(3) Pressure readings with Xsensor, 2008.

(4) ISO 16603 "resistance of penetration by blood and body fluids", ISO 16604 "resistance of penetration by blood-borne pathogens", EN 14126, SS 876 00 19 "Health care textiles – Bacteria penetration – Wet".

(5) SS-EN ISO 15496:2004, DIN 53.122.



Always read the instruction for use prior to usage of the product.

Care of Sweden and CuroCell S.A.M. are trademarks of Care of Sweden AB.

© Care of Sweden AB, 2013. All rights reserved. Last update: 27/11/13.



Mattress selector

- Guidelines when choosing a product

See how to choose the right mattress at:

www.careofsweden.com/mattress-selector

CuroCell S.A.M.® CF16



Mattress replacement system
with very high comfort

CuroCell S.A.M.[®] CF16

CuroCell S.A.M.[®] CF16 is used as an aid in the prevention and treatment of pressure ulcers up to category 2⁽¹⁾, and for pain therapy. It is a static air mattress which provides very good comfort and pressure⁽²⁾ relief. It is a mattress replacement system with an integrated foam core.

The mattress is made of very soft and durable materials. The included support pump is easy to use and very quiet. The mattress comes with CPR (rapid deflation of air) and has a built-in heel function.

Thanks to the extra soft inner cover, the already low pressure⁽³⁾ is further reduced.

Care of Sweden's mattresses are supplied with a four way stretch hygienic outer cover which conforms to relevant standards for hygiene⁽⁴⁾, quality and safety. All covers are manufactured from modern, recyclable materials and are vapour permeable⁽⁵⁾, which reduce the risk of skin maceration.

Facts

Type: Static air mattress
Height: 16 cm
Function: Prevention and treatment up to and including category 2⁽²⁾
Recommended user weight: 0-200 kg
Fire: EN 597-1, -2
Power supply: 230 V/50 Hz
Warranty: 2 years
Cleaning of cover: Wipe with cleaning agent and/or disinfectants.
Machine wash max 95 °C, tumble drying.



Features and Characteristics

- CPR function – rapid deflation
- Easy to handle and maintain
- Extra soft inner cover
- Heel function
- Silent and energy-efficient pump
- Soft, elastic, vapour permeable⁽⁵⁾ hygienic cover
- Unique labelling
- Very good cleaning properties

Sizes

80/85/90/105/120x200/210 cm.
If you need any other sizes please contact your distributor.

Optional

- Bag for the pump
- Durable bag for transportation and storage
- Hygiene cover with welded seams
- Transport function

References

- (1) Examination of the shear force and the pressure relief capability, Berlincert 2009.
- (2) European Pressure Ulcer Advisory Panel, Quick reference guide 2009.
- (3) Pressure readings with Xsensor, 2008.
- (4) ISO 16603 "resistance of penetration by blood and body fluids", ISO 16604 "resistance of penetration by blood-borne pathogens", EN 14126, SS 876 00 19 "Health care textiles – Bacteria penetration – Wet".
- (5) SS-EN ISO 15496:2004, DIN 53.122.



Always read the instruction for use prior to usage of the product.

Care of Sweden and CuroCell S.A.M. are trademarks of Care of Sweden AB.
© Care of Sweden AB, 2014. All rights reserved. Last update: 07/05/14.



Mattress selector

- Guidelines when choosing a product
See how to choose the right mattress at:
www.careofsweden.com/mattress-selector

CuroCell S.A.M.[®] CF16

CuroCell S.A.M.[®] is a static air mattress which provides very good comfort, pressure and pain relief. It is used preventively and in the treatment of pressure ulcers up to and including category 2⁽¹⁾.

CuroCell S.A.M.[®] is delivered with a durable liquid resistant and vapour permeable⁽²⁾ hygienic cover, which is easy to clean and has a very well documented hygienic standard⁽³⁾.

(1) European Pressure Ulcer Advisory Panel, Quick reference guide 2009.

(2) SS-EN ISO 15496:2004, DIN 53.122.

(3) ISO 16603 "resistance of penetration by blood and body fluids", ISO 16604 "resistance of penetration by blood-borne pathogens", EN 14126, SS 876 00 19 "Health care textiles – Bacteria penetration – Wet".

Examination of the pressure relief capability and the shear force

(Berlin Cert, 02/09/09)

CuroCell S.A.M.[®] gets highest rate, "High Pressure Relief", and is 33 % better compared to the reference mattress (patient weight of 80 kg). Even at maximum load (200 kg) the average contact pressure is below 30 mmHg.

1. Pressure Area Index (PAI)	Patient weight of 80 kg	Patient weight of 200 kg
Below 30 mmHg	100 %	58 %
Below 20 mmHg	91 %	33 %
Below 10 mmHg	50 %	20 %

2. Examination of shear forces

Maximum pulling force (Fmax)	181 N
Mean pulling force during slip-phase (Fquer)	177 N
Coefficient of sliding friction (μG)	0,72 ± 0,02
Horizontal stiffness (ΦH)	6,97 ± 0,12 N/mm

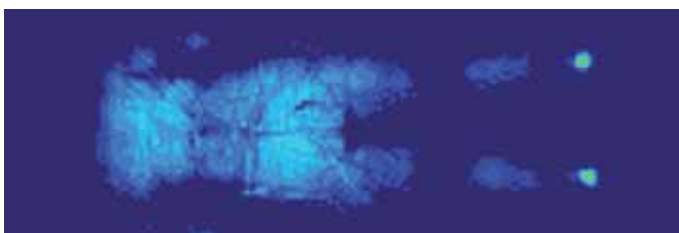


Comparative evaluation

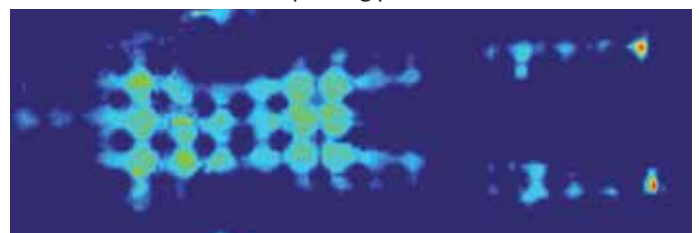
(Care of Sweden, 18/12/08)

This evaluation compares CuroCell S.A.M.[®] with other leading products on the Scandinavian market. It's performed with four different test persons, using the Xsensor pressure mapping system (X10). Results: CuroCell S.A.M.[®] is on average 19 % better than other products in the evaluation.

CuroCell S.A.M.[®]



Competing product



Customer evaluating

(Care of Sweden, 01/05/09 to 17/03/10)

Care of Sweden's own customer survey of users and employees, show consistently good perceived comfort and function.

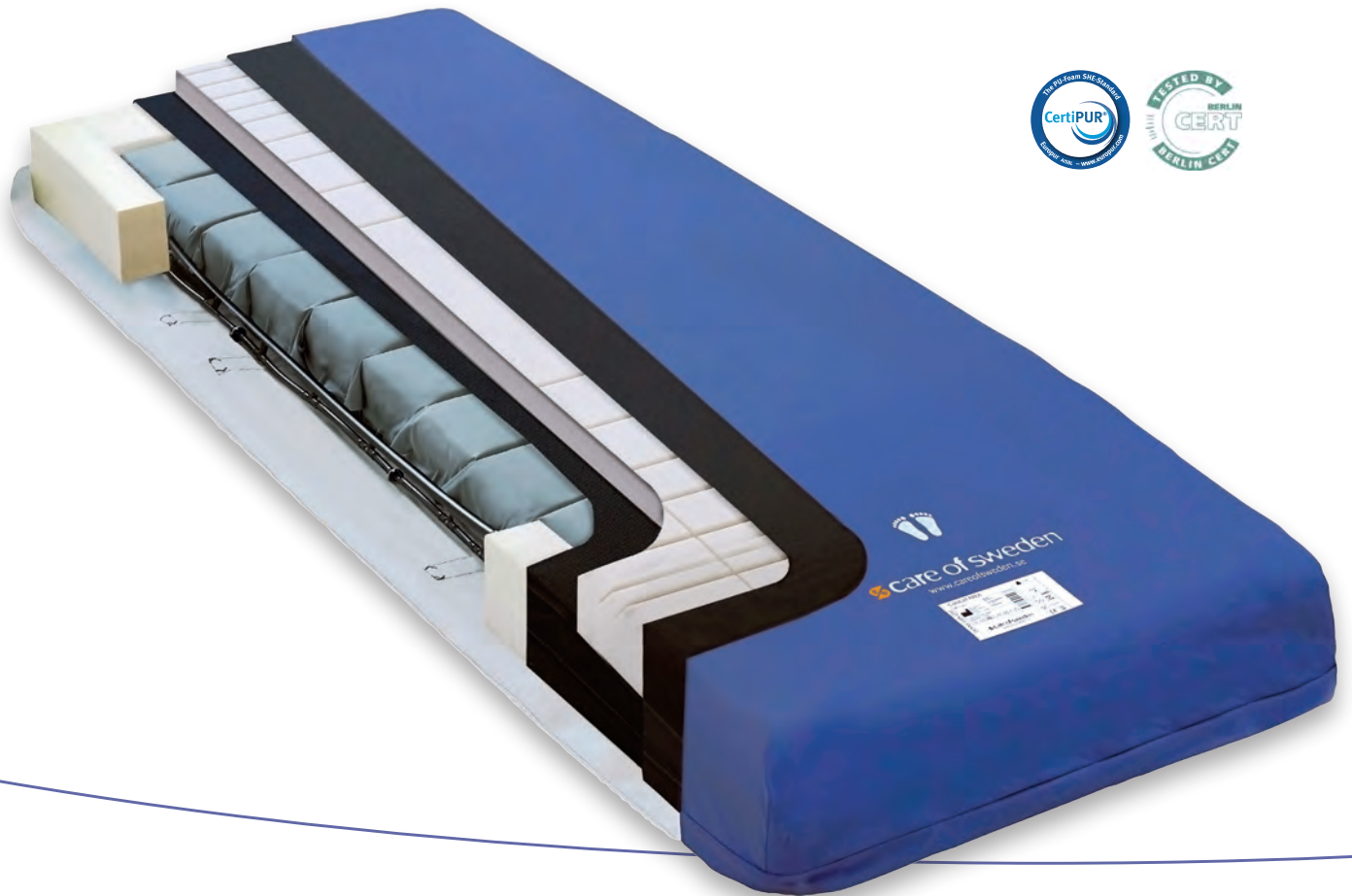
Patient's review (scale 1-5)

Comfort	4.47
Turn/Move on the mattress	4.26

Staff review (scale 1-5)

To work with the patient	4.36
To clean/make up/handle the mattress	4.33
To handle the pump/settings	4.52
To understand the instructions/user's manual	4.68
Fulfilled expectations	4.63

CuroCell® AREA Zone



Functional mattress replacement system
with self-adjusting technology

CuroCell[®] AREA Zone

CuroCell[®] AREA Zone is used as an aid in the prevention and treatment of pressure ulcers up to category 3⁽¹⁾. Recommended user weight is up to 230 kg⁽²⁾. It is a mattress system that combines air with foam for effective pressure redistribution and great comfort. The mattress is self-adjusting and non-powered. It is a flexible mattress replacement system that can be used in all kinds of healthcare settings, easy to use and handle.

CuroCell[®] AREA Zone is specially designed to be used as an effective aid for preventing pressure ulcers. The mattress has good properties regarding pressure, shear and moisture^(2,3), three important elements related to effective prevention or treatment of pressure ulcers.

The mattress system combines foam with air for effective pressure redistribution. It contains nine air cells that are divided into zones, which adapt automatically to the user and provides an individual setting.

It is built up with multiple layers of high quality foam. The mattress' special design reduces shear forces and with the built-in sloped heel function it also reduces pressure on the heel.

CuroCell[®] AREA Zone has very good pressure redistribution properties and has received a rating of "High pressure relief"⁽²⁾ in external tests. When tested, the mattress' capacity of pressure redistribution (PAI) it is reported that 100 % of the pressure on the mattress is below the threshold of 30 mmHg (load 80 kg).

Care of Sweden's mattresses are supplied with a four way stretch hygienic outer cover which conforms to relevant standards for hygiene⁽⁴⁾, quality and safety. All covers are manufactured from modern, recyclable materials and are vapour permeable⁽⁵⁾, which reduce the risk of skin maceration.

Facts

Type: Pressure redistribution air/foam mattress
Height: 18 cm
Function: Prevention and treatment up to and including category 3⁽¹⁾
Recommended user weight: 0-230 kg⁽²⁾
Fire: EN 597-1, -2
Warranty: 3 years
Cleaning of cover: Wipe with cleaning agent and/or disinfectants.
Machine wash max 95 °C, tumble drying.



Features and Characteristics

- A function for reduction of shearing forces
- A zone system in the top mattress
- Easy to handle and maintain
- Flexible and self-adjusting
- Handle for transportation
- Hygienic cover with welded seams
- Inner cover of high quality
- Integrated heel function
- Non-powered mattress replacement system
- Reinforced sides for improved lateral stability
- Unique markings on the mattress and cover

Sizes

80/85/90/105/120x200/210 cm.
If you need any other sizes please contact your distributor.

Optional

- Evac cover
- Low friction cover
- Sturdy transport and storage bag

References

- (1) European Pressure Ulcer Advisory Panel, Quick reference guide, 2009. Action plan against pressure ulcer, Care of Sweden in 2012.
- (2) Examination of the pressure relief capability, Berlincert 2012.
- (3) SS-EN ISO 15496: 2004, YOUR 53.122.
- (4) ISO 16603 "resistance of penetration by blood and body fluids", ISO 16604 "resistance of penetration by blood-borne pathogens", EN 14126, SS 876 00 19 "Medical textiles - Bacterial penetration - Wet".
- (5) SS-EN ISO 15496: 2004.



Always read the instruction for use prior to usage of the product.

Care of Sweden and CuroCell are trademarks of Care of Sweden AB.
© Care of Sweden AB, 2013. All rights reserved. Last update: 27/11/13.



Scan QR code to watch presentation video.



Mattress selector

- Guidelines when choosing a product
See how to choose the right mattress at:
www.careofsweden.com/mattress-selector

CuroCell® AREA Zone

The CuroCell® AREA is a replacement mattress used in all types of health care environments. It is used preventatively and as an aid in treatment of pressure ulcers up to and including category 3⁽¹⁾. Because of its unique construction combining foam and air, this mattress provides high user comfort, as well as a solution for pressure care without the need for external pump or electricity.

CuroCell® AREA is delivered with a durable hygiene cover, which is easy to clean and has a very well documented hygienic standard⁽²⁾ and is manufactured with welded seams. The soft and elastic cover is vapour permeable⁽³⁾.

(1) European Pressure Ulcer Advisory Panel, Quick reference guide 2009.

(2) ISO 16603 "resistance of penetration by blood and body fluids", ISO 16604 "resistance of penetration by blood-borne pathogens", EN 14126, SS 876 00 19 "Health care textiles – Bacteria penetration – Wet".

(3) SS-EN ISO 15496:2004, DIN 53.122.

Examination of the pressure relief capability and the shear force

(Berlin Cert, 02/09/09)



CuroCell® AREA gets highest rate, "High Pressure Relief", and is 33 % better compared to the reference mattress (patient weight of 80 kg). Even at maximum load (230 kg) the average contact pressure is below 30 mmHg.

1. Pressure Area Index (PAI)	Patient weight of 80 kg	Patient weight of 230 kg
Below 30 mmHg	100 %	52 %
Below 20 mmHg	97 %	27 %
Below 10 mmHg	52 %	16 %

2. Examination of the shear forces

Maximum pulling force (Fmax)	187 N
Mean pulling force during slip-phase (Fquer)	183 N
Coefficient of sliding friction (μG)	0,75 ± 0,02
Horizontal stiffness (H)	8,06 ± 0,36 N/mm

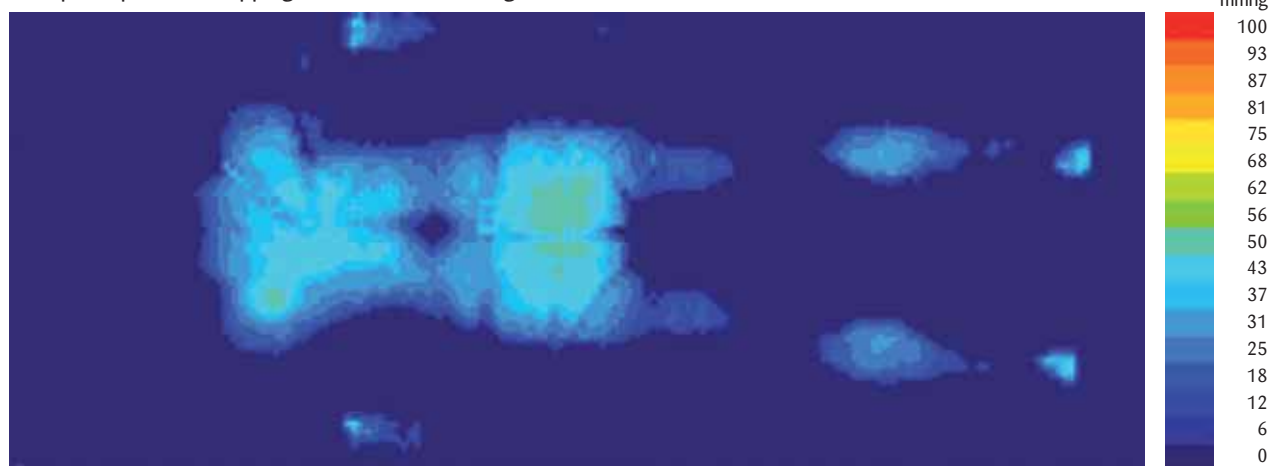
Comparative evaluation

(Care of Sweden, 30/04/09)

A check of the pressure relief capability, in comparison with products in the same area of use and from other leading manufacturers, CuroCell® AREA receives significantly better results⁽¹⁾. With a load of 80 kg CuroCell® AREA receives 7-30 % better RPI. At maximum load, the result is even more significant. CuroCell® AREA shows 22-35 % better RPI (RPI = Relative Pressure Relief).

(1) The data is collected from a public database (MDS Hilfsmittel Informations System 30/09/08). Compared products are AtmosAir 4000, AtmosAir 9000 and Vicair Academy Mattress ARM415.

Example of pressure mapping (Xsensor). Male, 88 kg, 182 cm.



Describes the characteristics of the device, it cannot directly predict clinical outcome.

CuroCell[®] 4



Effective alternating pressure mattress
system with high comfort

CuroCell® 4

The CuroCell® 4 is used as an aid in the prevention and treatment of pressure ulcers up to and including category 4⁽¹⁾. It is

ideal for all healthcare environments and a highly functional⁽²⁾, comfortable, cost-effective mattress replacement system.

Care of Sweden's mattresses are supplied with a four way stretch hygienic outer cover which conforms to relevant standards for hygiene⁽³⁾, quality and safety. All covers are manufactured from modern, recyclable materials and are vapour permeable⁽⁴⁾, which reduce the risk of skin maceration.

Facts

Type: Alternating pressure mattress

Height: 21 cm

Function: Prevention and treatment up to and including category 4⁽¹⁾

Recommended user weight: 0-200 kg

Power supply: 230 V/50 Hz

Noise level of pump: 21 dBA

Warranty: 2 years

Cleaning of cover: Wipe with cleaning agent and/or disinfectants.

Machine wash max 95 °C, tumble drying.



Features and Characteristics

- CPR function – rapid deflation
- Digital pump with built-in sensor
- Easy handling
- Handle for transport and moving
- Replaceable air cells of polyurethane with Cell-in-Cell system
- Silent and energy-saving pump
- Soft, elastic, vapour permeable⁽⁴⁾ hygienic cover
- Sound and light alarm for low pressure
- Static function with automatic return
- Transport function
- Very good cleaning properties

Sizes

80/85/90/105/120x200 cm and 80/85/90x210 cm.

If you need any other sizes please contact your distributor.

Optional

- Cable holder
- Comfort fabric
- Durable bag
- Heel function
- Hygienic cover with welded seams
- Low friction cover
- Sheet holder
- Ventilated cells (Low Air Loss)

References

(1) European Pressure Ulcer Advisory Panel, Quick reference guide 2009.

(2) Examination of the shear force and the pressure relief capability, Berlincert 2009.

(3) ISO 16603 "resistance of penetration by blood and body fluids", ISO 16604 "resistance of penetration by blood-borne pathogens", EN 14126, SS 876 00 19 "Health care textiles – Bacteria penetration – Wet".

(4) SS-EN ISO 15496:2004, DIN 53.122.



Always read the instruction for use prior to usage of the product.

Care of Sweden and CuroCell are trademarks of Care of Sweden AB.

© Care of Sweden AB, 2013. All rights reserved. Last update: 14/03/14.



Scan QR code to watch instructional video.



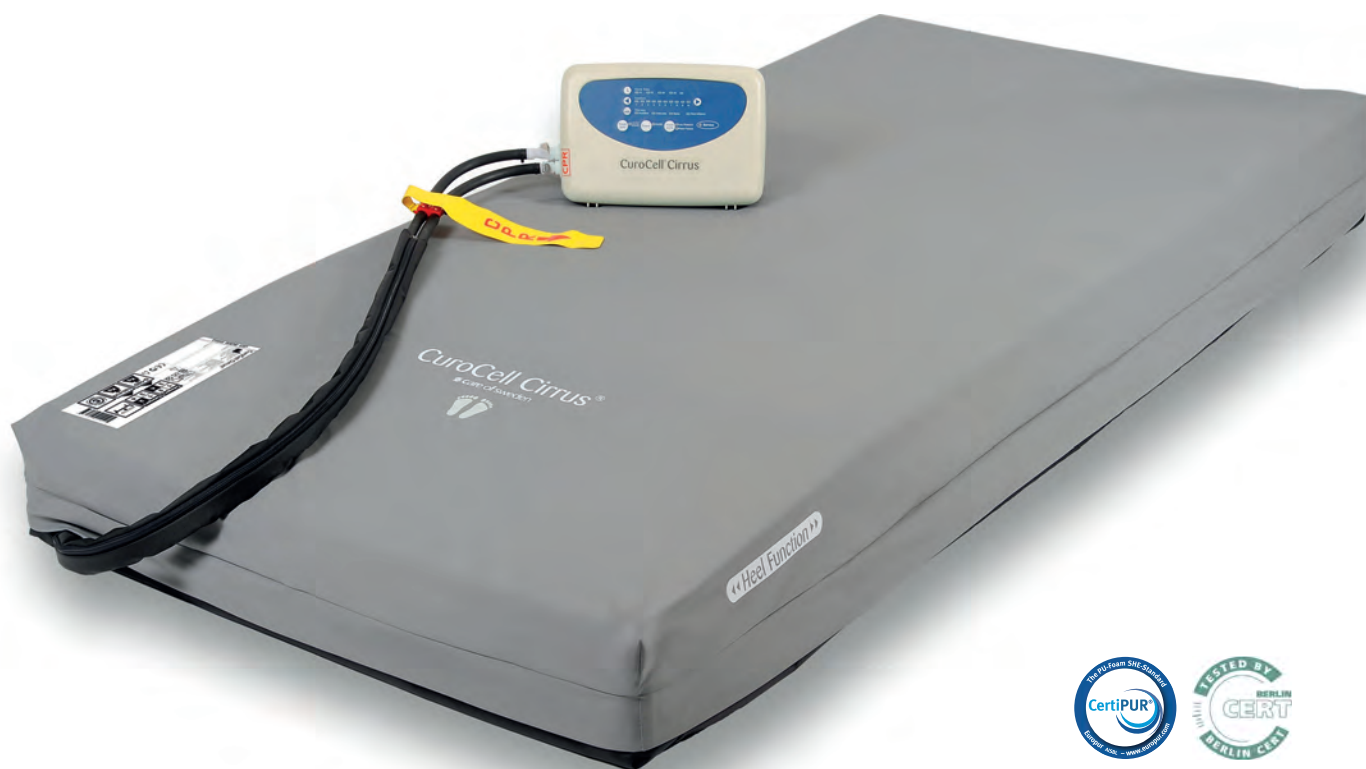
Mattress selector

- Guidelines when choosing a product

See how to choose the right mattress at:

www.careofsweden.com/mattress-selector

CuroCell Cirrus[®] 2.0



Pain therapy pressure care system

CuroCell Cirrus[®] 2.0

CuroCell Cirrus[®] 2.0 is used as an aid in the prevention and treatment of pressure ulcers up to category 4 (0-180 kg) and category 2 (181-230 kg)⁽¹⁾, and for pain therapy. It is a replacement system ideal for all healthcare environments.

CuroCell Cirrus[®] 2.0 combines air with a soft foam surface and provides high user comfort and pressure redistribution⁽²⁾. The unique wave like alternating process is particularly suitable for pain therapy. The added heel function offers an even better protection by relieving pressure on the heels.

The silent and easy to use CuroCell Cirrus[®] pump with four different settings; alternating, static, alternating + seat inflation and static + seat inflation make this mattress very functional for all patient groups.

In addition the dual cover system reduces the shearing effect when adjusting the bed.

As an option, you can choose the Evac cover which has handles for evacuation.



Care of Sweden's mattresses are supplied with a four way stretch hygienic outer cover which conforms to relevant standards for hygiene⁽³⁾, quality and safety. All covers are manufactured from modern, recyclable materials and are vapour permeable⁽⁴⁾, which reduce the risk of skin maceration.

Facts

Type: Alternating pressure mattress

Height: 21 cm

Function: Prevention and treatment up to and including category 4⁽¹⁾

Recommended user weight: 0-180 kg (cat. 4) & 180-230 kg (cat. 2)

Fire: EN 597-1, -2

Power supply: 230 V/50 Hz

Noise level of pump: 27 dBA

Warranty: 2 years

Cleaning of cover: Wipe with cleaning agent and/or disinfectants.

Machine wash max 95 °C, tumble drying.



Features and Characteristics

- Alternating pressure on soft foam surface
- Digital and easy to use pump
- Easy handling and cleaning
- Heel slope, for pressure relief of heels
- Hygienic cover with welded seams
- Rapid deflation of the mattress
- Silent and energy-saving pump
- Soft, elastic, vapour permeable⁽⁴⁾ hygienic cover
- Sound and light alarm for low pressure
- Sound and light alarm for power failure
- Static function with automatic return
- Transport function

Sizes

80/85/90/105/120x200 cm and 80/85/90x210 cm.

If you need any other sizes please contact your distributor.

Optional

- Durable bag
- Evac cover
- Low friction cover

References

- (1) European Pressure Ulcer Advisory Panel, Quick reference guide 2009.
- (2) Examination of the shear force and the pressure relief capability, Berlincert 2009.
- (3) ISO 16603 "resistance of penetration by blood and body fluids", ISO 16604 "resistance of penetration by blood-borne pathogens", EN 14126, SS 876 00 19 "Health care textiles – Bacteria penetration – Wet".
- (4) SS-EN ISO 15496.



Always read the instruction for use prior to usage of the product.

Care of Sweden and CuroCell Cirrus are trademarks of Care of Sweden AB.
© Care of Sweden AB, 2013. All rights reserved. Last update: 27/11/13.



Scan QR code to watch presentation video.



Scan QR code to watch instructional video.



Mattress selector

- Guidelines when choosing a product
See how to choose the right mattress at:
www.careofsweden.com/mattress-selector

CuroCell Cirrus[®] 2.0

Ultrasound data report for the Oska Cirrus mattress efficacy trial

Dr SR Young, Cambridge, UK
24/01/10

Introduction

To assess the efficacy of any therapy it is vital that we use a sensitive, objective technique. Skin and wound assessment falls into two main categories, invasive and non-invasive. Invasive techniques tend to yield quantitative results but generally involve biopsy, which destroys the tissue, e.g. histology. Non-invasive methods tend not to destroy tissue, however, the results are more subjective and not as quantitative. An example of this includes wound area measurement, where digital photographs are taken of the wound then the area calculated from the image using a computer. Errors can occur when deciding where the wound edge is. Also, this form of analysis only tells you about the wound surface and not what is happening at the wound bed and deep in the surrounding tissues. Other techniques involve making a judgement about health of the skin and underlying tissues based on its colour. This technique has various weaknesses in that the tissues may be a particular colour for reasons other than the health of the tissue, e.g., stain from an applied medication. Also, colour assessment techniques can be limited in dark skin.

High Frequency Diagnostic Ultrasound is a non-invasive method, which allows the clinician to get a high-resolution image of the wound bed. This is a simple procedure and with certain wound dressings images can be gained without removing the dressing. The technique allows the clinician to see the condition of the skin and underlying tissues, which gives the opportunity to see any changes occurring before they

become clinically evident, and giving early warning as to whether the skin is deteriorating or improving. This ability can lead to large savings in treatment times.

The scanner used operates at a range of frequencies from 20 MHz to 50 MHz (Episcan - Longport Inc.). This frequency gives an axial resolution of 20 - 65 µm.

Method

Five elderly patients aged between 81 and 97 were recruited from a nursing home. The patients had limited mobility and when not in bed, spent long periods of time sitting in a chair.

Four of the patients had grade 1 sacral pressure ulcers and four had grade 1 pressure ulcers on their heels.

Ultrasound scans were taken of their pressure ulcer and adjacent normal skin. The normal skin was scanned to establish a profile of what the uninjured tissue looks like. The pressure ulcer was then scanned at 7, 14, 21, 28, 37 and 63 days after the patient started to use the new mattress.

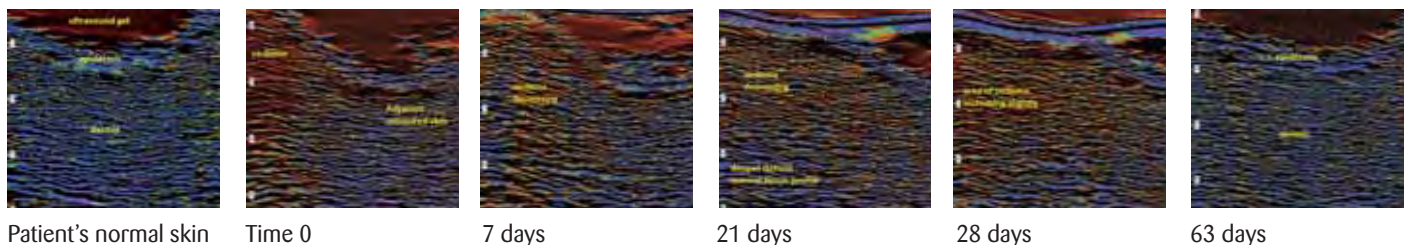
Results (Sacral Pressure Ulcers)

Figure 1 shows an example of the sacral skin of one of the patients. The first scan shows what the patient's normal skin looks like. The sequence of scans shows the initial skin profile at time 0, which has a lot of oedema beneath the epidermis. For comparative purposes the scan also shows the adjacent uninjured skin. As time progresses this zone of oedema can be seen to reduce as the therapy begins to work.

“The mattress is great the patient loves it and all her pressure areas have remained intact – the patient very seldom gets out of her bed. The staff find the mattress very easy to work with, in fact some did not realise that it was an air mattress as it is so quiet”

WESTERN ISLES HOSPITAL

Figure 1. Ultrasound scans of sacral skin.



The 28 days scan highlights a problem we found in the study and that was that some of the patients were spending most of the day in their chair and this was having an impact on the sacral region resulting in an increase in oedema in the tissues. Therefore the degree of any positive effect the mattress was having on the sacrum was being reduced by the pressure of the chair surface on the sacral area. It was then decided to give the patients a special support cushion for their chair. This had an immediate effect on the sacral area and further reductions in oedema were noted and by 63 days (the last time point)

a normal skin profile was becoming evident as shown in figure 1.

Conclusion

The ultrasound data shows that over the 63 day test period there was a decrease in oedema in the skin towards normal levels. This data corroborates what was seen in clinical examination of the patients where skin redness seen at visit one decreased over the trial period to that of the patients normal skin coloration.

CuroCell Cirrus[®] 2.0

Report on a Clinical Evaluation of Cirrus mattresses in a Nursing Home

Fiona Collins, MSc DipCOT SROT. Anna Coulborn, RGN TVN. Debby Verrall, TVN HCA.

EXECUTIVE SUMMARY:

- The Cirrus Mattress was evaluated by 5 subjects in a Nursing Home over a 10 week period, in order to examine its effect on contributing to the prevention of pressure damage. The average age of the Subjects was 88 years, with the oldest Subject being 97 years and the youngest 81 years old.
- The Waterlow Score Range was 18 – 32, with the average Waterlow Score being 23. Therefore all Subjects were in a “High Risk” to Very High Risk” category. The Subjects and Nursing Home staff all reported that the Cirrus Mattress provided increased comfort. The staff commented on the ease of use of the Mattress and that it aided moving and handling of the subject. In terms of infection control, the Mattress was easy to keep clean. However, the staff did suggest that the bulk of the Mattress made bed-making somewhat more difficult than for example a standard mattress, but not necessarily more so that other deep cell alternating appliances.
- All Subjects had existing pressure damage prior to the use of the Cirrus Mattress on either their sacrum, buttocks or heels. Use of the Cirrus Mattress appeared to result in improvement in the tissue viability of the Subjects, both visually, and via High Definition Ultrasound Scan.

INTRODUCTION: Preventing pressure damage is difficult, due to the large number of potential aetiological factors involved, although it is recognised that the largest single causative factor is unrelieved pressure. Concomitant to this are other predisposing factors which may be intrinsic or extrinsic. These include, intrinsically malnutrition, incontinence, altered level of consciousness and altered level of sensation, and extrinsically, friction and shear forces. Many of these factors are often involved simultaneously, and for those patients who are confined to bed for prolonged periods, appropriate pressure redistributing equipment needs to be considered.

CIRRUS MATTRESS: The Cirrus Mattress is a new mattress marketed by Lynas Foster Associates, which is designed to reduce the potential for development of pressure damage in people who are known to be at risk. The Cirrus system represents a new generation of alternating mattress systems that provide pressure relief. Prior to this evaluation of the mattress, in-house mapping results had been conducted which indicated that the Cirrus Mattress offered significant pressure redistribution.

AIM OF STUDY: To evaluate the clinical efficacy of the Cirrus Mattress on a small group of Nursing Home Subjects, when used in conjunction with their existing bed frames.

METHODOLOGY: The Subjects for the study were residents in a Nursing Home, each of whom had existing pressure damage of no greater than Grade 2. Prior to the evaluation, the Subjects had been identified by Nursing Home staff as being at high or very high risk of

pressure damage, but had inadequate mattress provision. The Cirrus Mattresses were set to each Subject’s individual weight.

RESULTS: The skin on all of the Subjects showed marked signs of improvement, both visually and on the Ultrasound Scan. The improvement was seen on day 7, 14, 28, 35 and day 70 and this is comparatively demonstrated by the photograph evidence.

During the week 3 evaluation, there was some concern that the erythema (hence unrelieved pressure) on two of the Subjects was not being alleviated, despite the provision of the mattress. On further discussion it was determined that this pressure damage was perhaps attributable to the fact that they sat out of bed for long periods of time, without appropriate cushions on their armchairs. Having determined this, it was considered unethical not to provide these subjects with appropriate equipment in the chair. Therefore, these Subjects were provided with an alternating air cushion for the remainder of the study (Subjects 3 and 4).

All of the Subjects were scanned weekly and all showed visually marked signs of improvement in their sacral, buttock and heel areas.

Subject HD (1) and Subject IT (2) were removed from the study as a consequence of hospital admissions. There are however, 3 time points of evaluation prior to these admissions which have been included in the study results.

Day 70 concluded the study, with Subjects 3, 4 and 5 being visually reassessed and scanned with High Definition Ultrasound.

None of these Subjects showed any evidence of pressure damage (as can be noted on the day 70 photographs).

Subject 3 was unable to communicate his level of comfort or discomfort, but it was noted that he had been in bed for several days prior to the final scan due to deterioration in his general condition. Despite this enforced bed rest, there was no evidence of any pressure damage.

Those Subjects who could report on their comfort level stated that it was greatly improved.

All of the Subjects stated were able to lay comfortably in bed for longer periods of time, improving the quality of sleep, in comparison to their previous mattresses, except Subject 3 who was unable to verbalise his comfort levels. On average lying in bed appeared to be better tolerated, and the time spent in bed was consequently able to be extended on average by one and half hours for each Subject.

The individual case studies, with photographs, are presented at the end of this report.

CONCLUSION: It must be appreciated that the above results, whilst extremely positive, only apply to a very small group of individuals and a larger study may now be indicated. However, all of the Subjects had exhibited visual evidence of pressure damage during the initial assessment on Day 0. All of the Subjects’ skin showed significant improvement on day 14 with the most notable being Subjects 4 (IK) and 5 (JR). The only changed variable with regards to the Subjects’ care that was altered during the evaluation was the provision of the Nova Care Cushions in their armchairs.

Curera® Support Wedge



For positioning and position changes

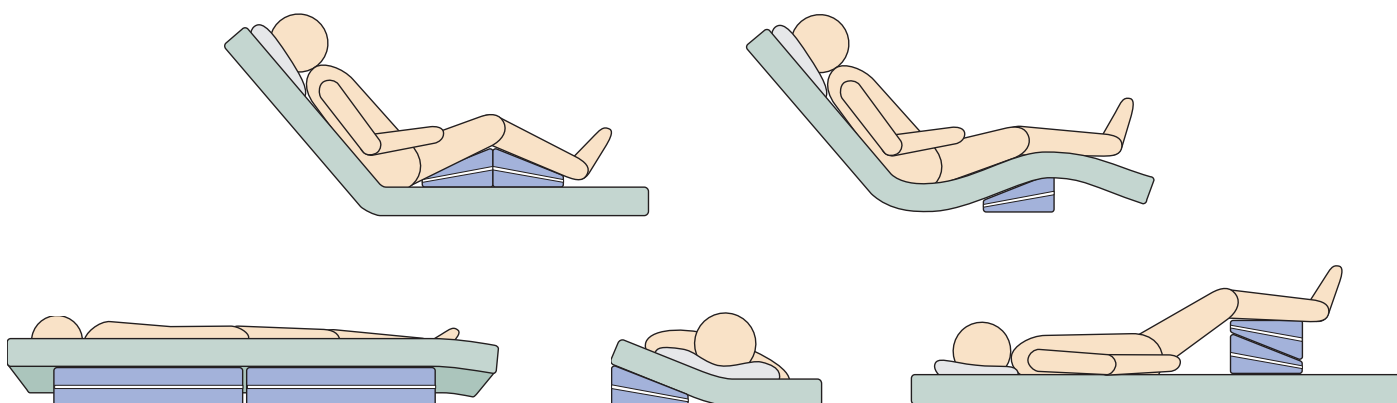
Curera[®] Support Wedge

Curera[®] Support Wedge can be used to place a patient/user in side position in order to relieve sacrum, which is an extra sensitive area. For the side position, two support wedges are used together.

The support wedge is easy to use and clean. It is delivered with a liquid resistant cover that can be wiped off with an cleaning agent and/or disinfectants. It can also be machine washed.



Example of positionings



Facts

Filling: 100 % foam

Cover: Polyurethane/polyester

Warranty: 1 year

Cleaning of cover: Wipe with cleaning agent and/or disinfectants.

Machine wash max 95 °C, tumble drying.

Size

70x26x15/5 cm

Example of application

- As kick protection against bed rails
- For relief in prevention of pressure ulcers
- When the user has problems to lie completely on the side
- When the user has problems with position changes
- For other positioning



Always read the instruction for use prior to usage of the product.

Care of Sweden and Curera are trademarks of Care of Sweden AB.

© Care of Sweden AB, 2013. All rights reserved. Last update: 13/11/13.



Scan QR code to watch instructional video.

Care of Sweden AB
Box 158
SE-512 24 Svenljunga
Sweden

Phone +46 (0)771-106 600
Fax +46 (0)325-128 40
E-mail info@careofsweden.se
Web www.careofsweden.com

 **care of sweden**
takes the pressure off



P | 03 6343 4825 E | sales@advancedlifecare.com.au W | advancedlifecare.com.au