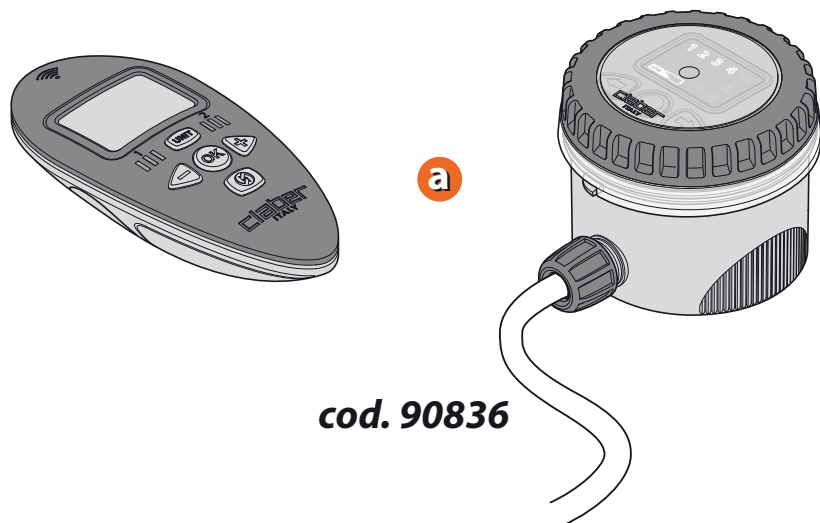


The AQUA-RADIO KIT comprises two essential components:

- Remote Control and RF Unit.
- The kit can also be used in connection with a RF Rain Sensor (optional)

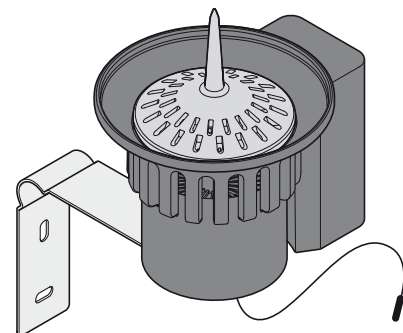
1



cod. 90836

b

OPTIONAL

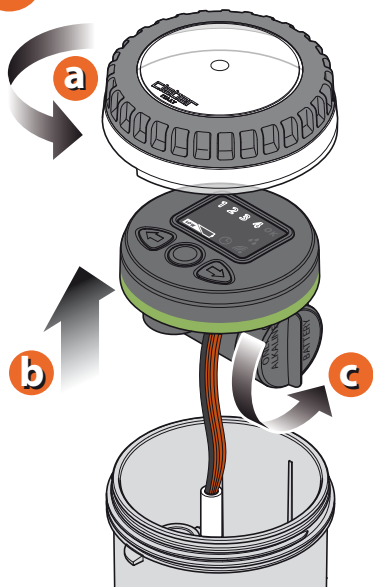


cod. 90831

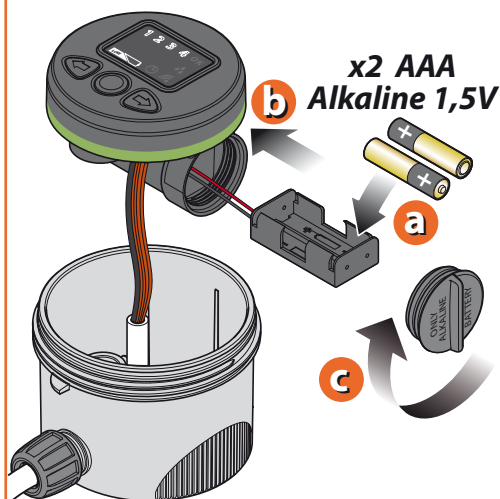
For Aquaradio Kit (cod.): 90836

RF UNIT. FITTING THE BATTERIES. To fit new batteries or replace flat ones: Unscrew the transparent cover and remove the control unit. Unscrew the cap of the battery housing. Draw the battery holder out of the housing. Remove flat batteries, if in place, and fit the new batteries inside the holder, observing the correct polarity. Reposition the battery holder in the housing. Retighten the cap, checking that the seal is positioned correctly in its seat. Reposition the control unit as indicated and refit the transparent cover, checking that the seal is correctly seated in its groove. Use only 2 new 1.5V AAA alkaline batteries. Once the batteries are fitted, an initialization routine will take place (display Leds light up in sequence, valves close in sequence). Warning: 30 seconds after having fitted the batteries, or pressed any of the buttons, the Leds on the panel will go out. To refresh the display, press any button.

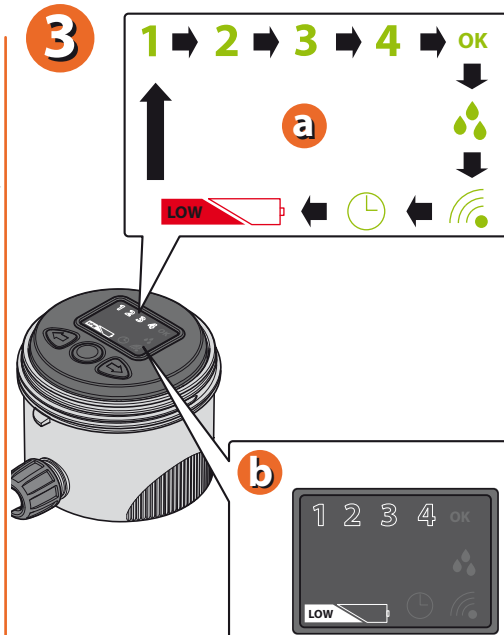
1



2

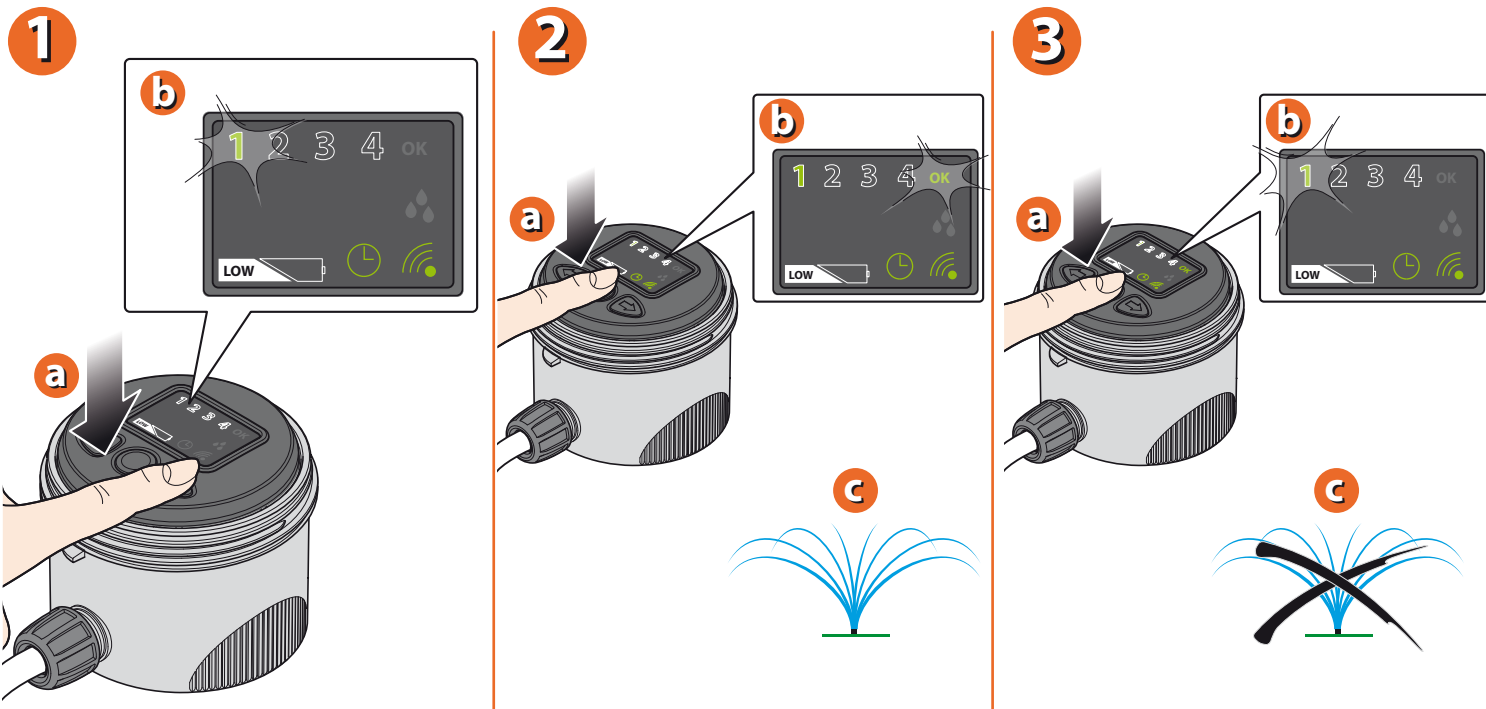


3



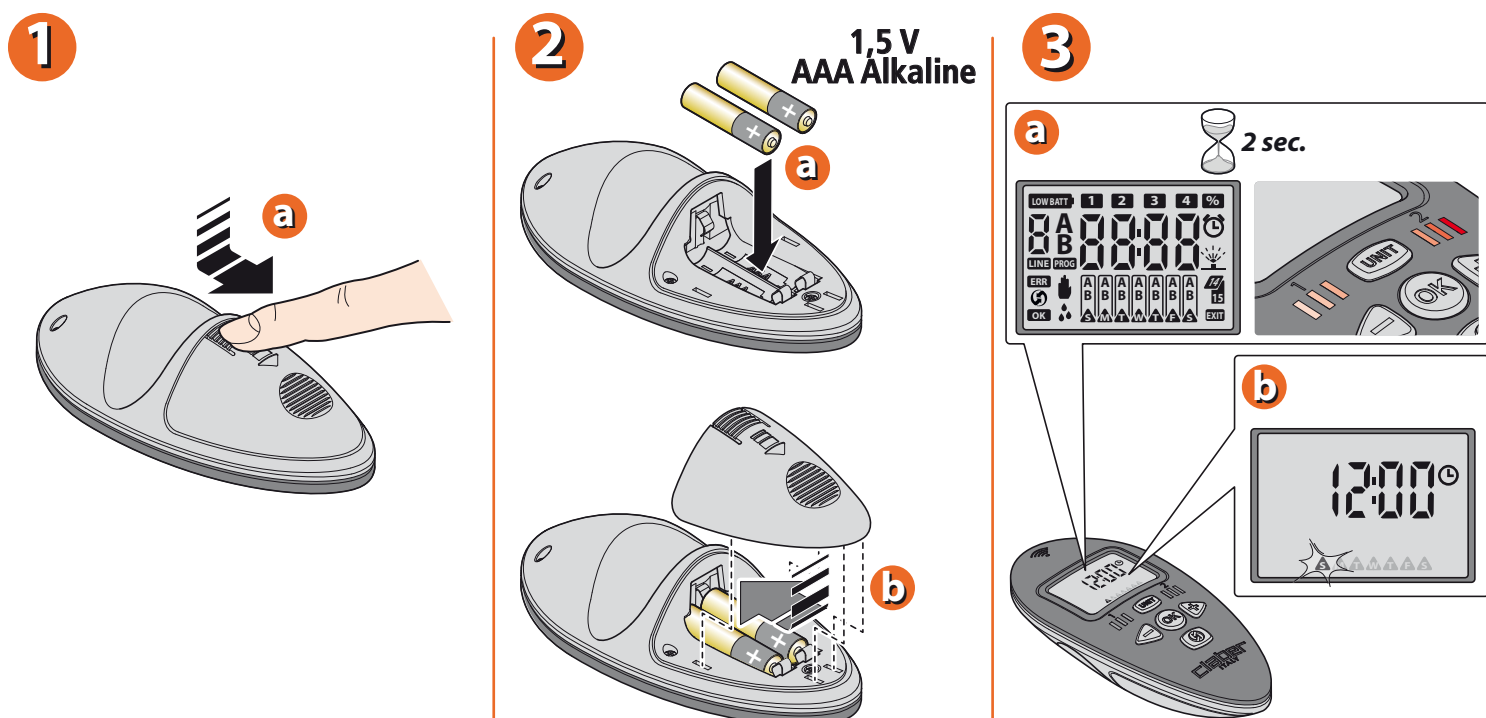
For Aquaradio Kit (cod.): 90836

MANUAL PROGRAMMING OF RF UNIT. Using the BACK/FORWARD arrow buttons, select a solenoid valve (from 1 to 4) to be opened manually (n° 1, for example). The number of the valve will blink. Press the OK button to open the valve. Press the OK button a second time to close it. Use the BACK/FORWARD arrow buttons to select the other 3 solenoid valves and repeat the procedure described above.



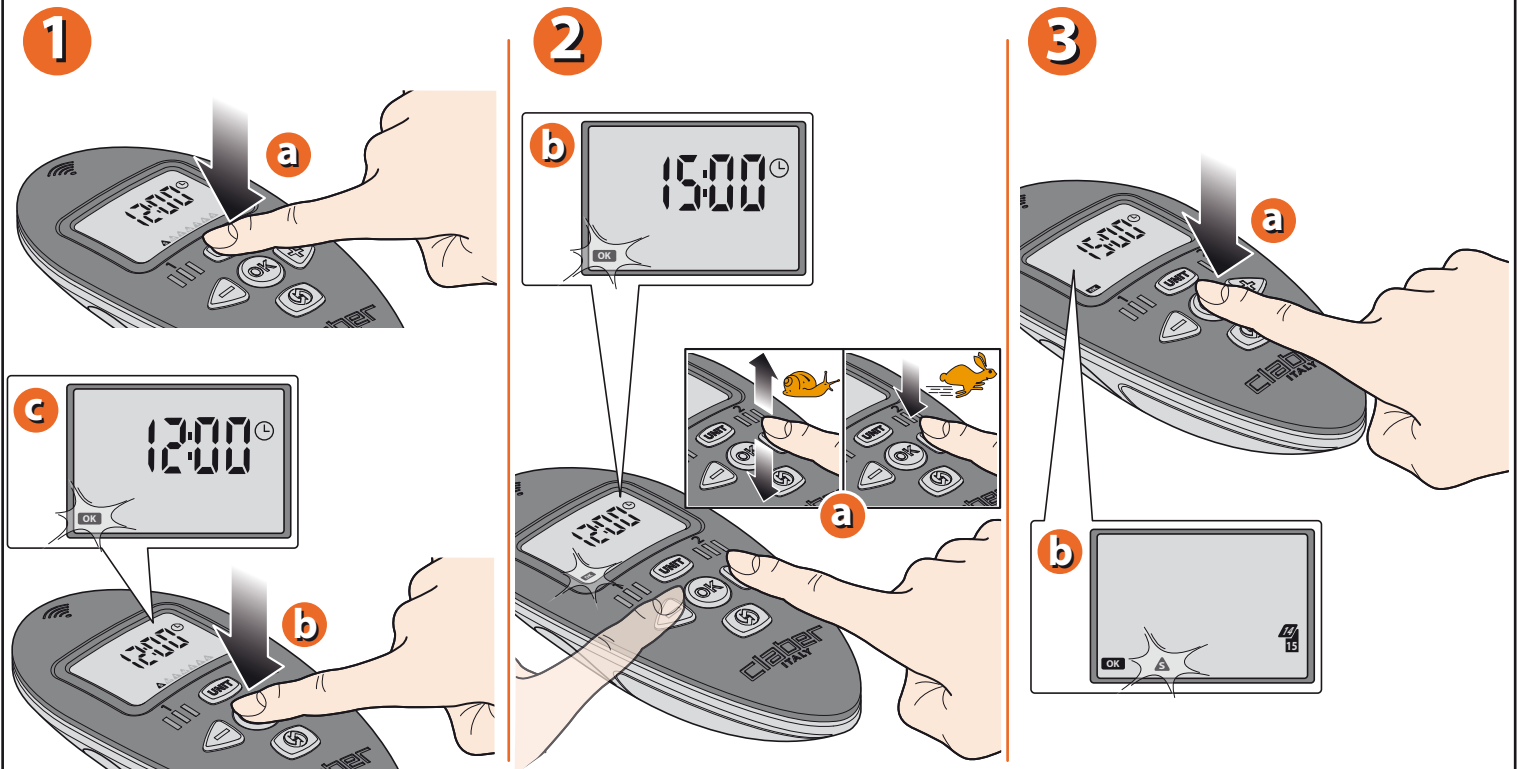
For Aquaradio Kit (cod.): 90836

TELECONTROLLER. FITTING THE BATTERIES. Remove the cover of the battery housing. Fit the 2 batteries inside the holder, observing the correct polarity. Use only 2 new 1.5V AAA alkaline batteries. Refit the cover of the battery housing. The first time that the batteries are fitted, the initial current TIME/DAY page appears in the display, indicating 12:00 and S for Sunday.



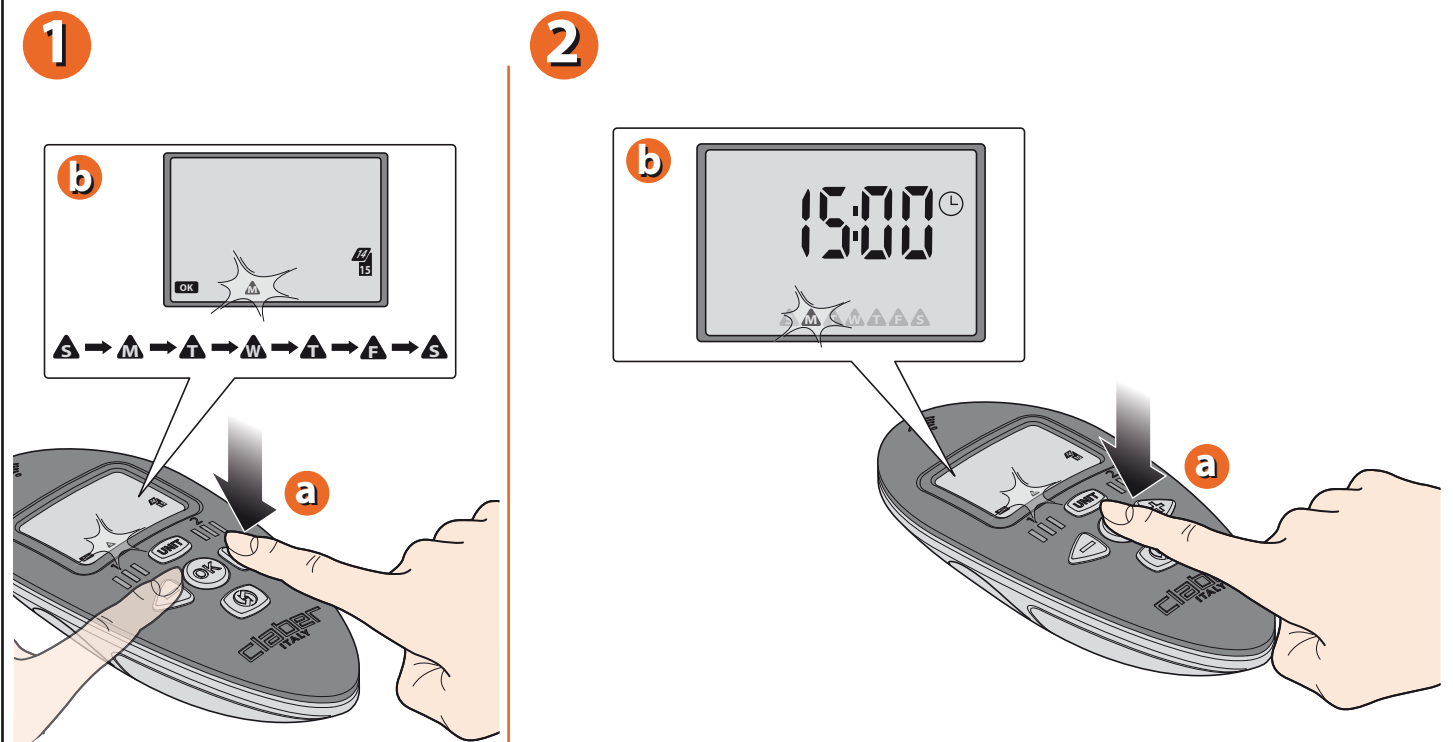
For Aquaradio Kit (cod.): 90836

TELECONTROLLER. SETTING THE TIME AND DAY. Press the **UNIT** button repeatedly to bring up the TIME/DAY page. To set the time, press the **OK** button — the OK symbol will blink — then proceed to set the required time (e.g. 15:00) using the **←** **→** buttons. Confirm the time by pressing the **OK** button.



For Aquaradio Kit (cod.): 90836

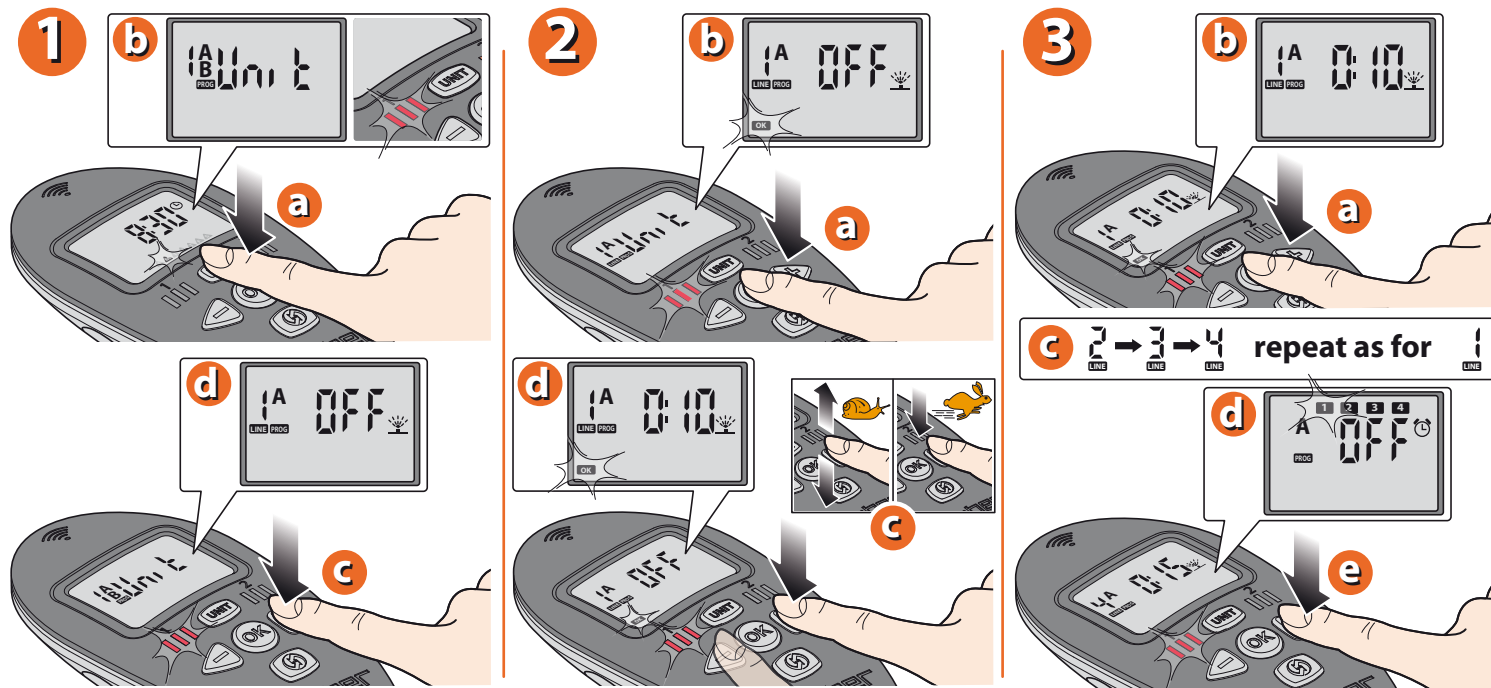
TELECONTROLLER. SETTING THE TIME AND DAY. Setting the day of the week: use the **←** **→** to select the day of the week: S=Sunday – M=Monday – T=Tuesday – W=Wednesday – T=Thursday – F=Friday – S=Saturday. To confirm and quit, press the **OK** button.



For Aquaradio Kit (cod.): 90836

TELECONTROLLER. PROGRAMMING. Set the duration of the watering cycles (RUN TIME) for the 4 LINES of RF Unit 1.

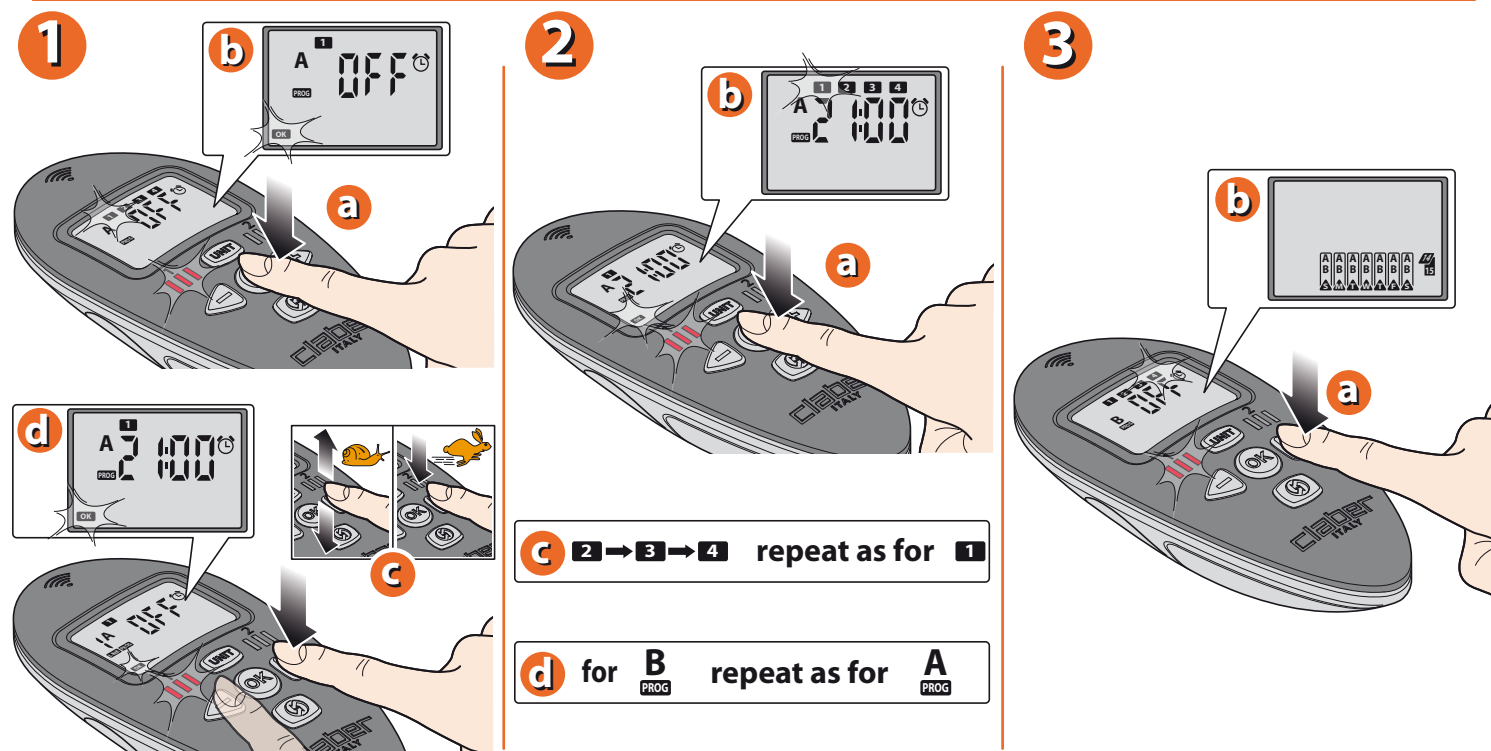
On the TIME/DAY page, press the **UNIT** button: this activates the UNIT page, and red Leds on RF Unit 1 will blink. Press the **▶** button to access the RUN TIME page. Press the **OK** button to set the run time on LINE 1 (the OK symbol will blink: use the **◀**/**▶** buttons to set the number of minutes watering (e.g.: 10 min.) (pressing and holding them, the numbers will scroll faster). Press **OK** to confirm the selected time. Press the **▶** button to set the run times for the other 3 LINES, repeating the steps described above. Press the **▶** button to view the next programming page.



For Aquaradio Kit (cod.): 90836

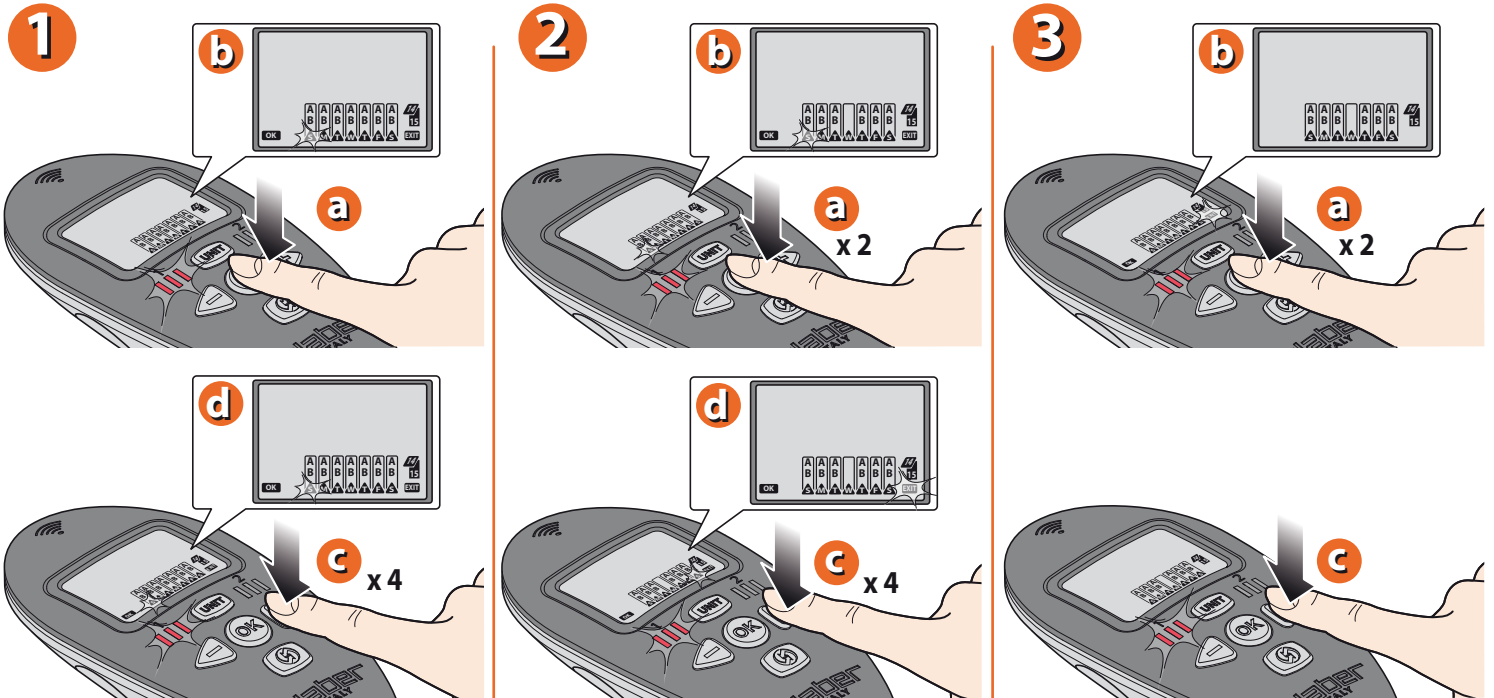
TELECONTROLLER. PROGRAMMING. Set from 1 to 4 START TIMES for the watering cycle programmed on RF Unit 1.

Press **OK** to set start time 1, the n° 1 symbol remains permanently alight. Use the **◀**/**▶** buttons to set start time n° 1 (e.g.: 21.00) (pressing and holding them, the numbers will scroll faster). Press **OK** to confirm the selected time. Press the **▶** button to set the subsequent start times 2, 3, 4 and repeat the steps described above: start times can also be set to OFF, using the **◀**/**▶** buttons, so as to skip the relative watering cycle if not required. Press the **▶** button to view the next programming page.



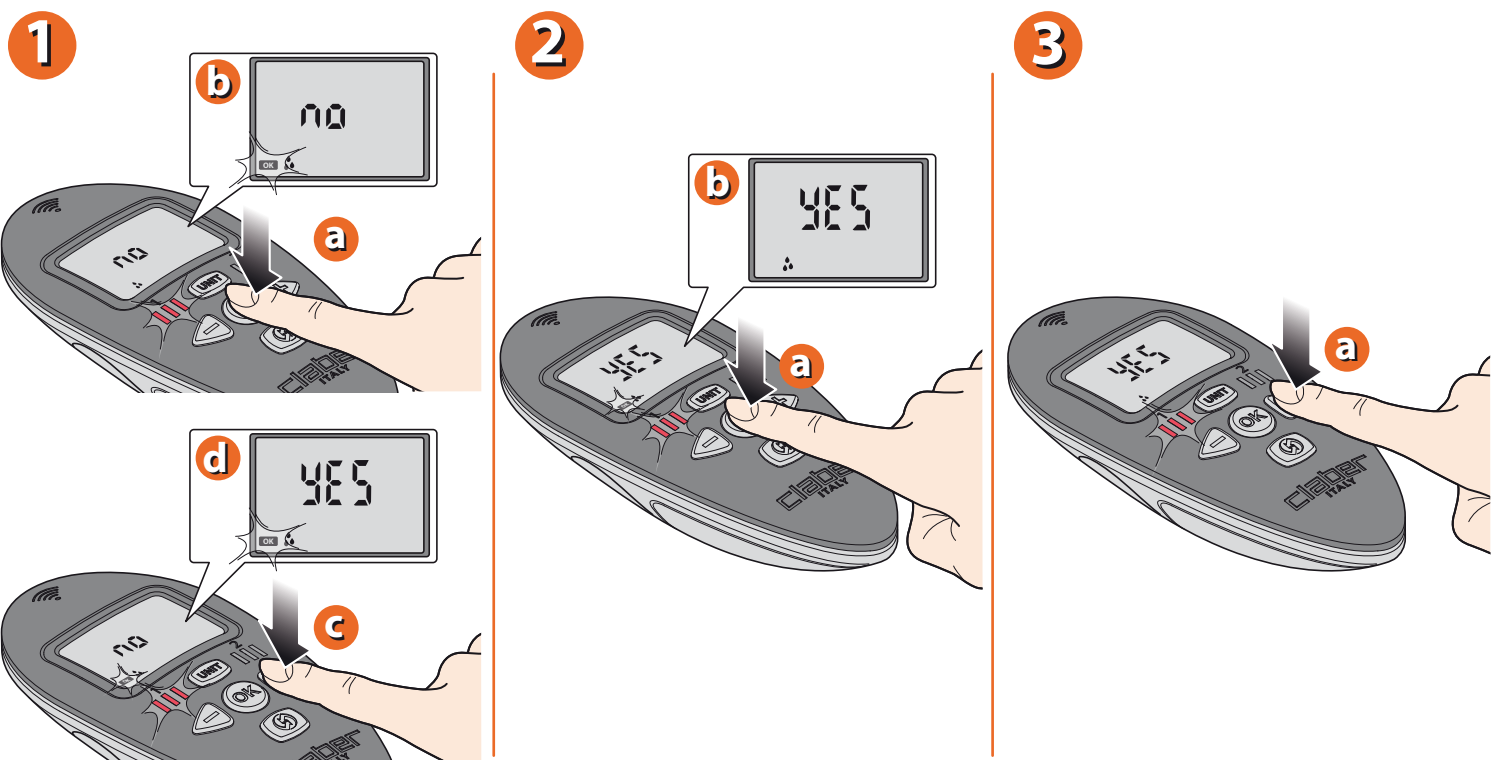
For Aquaradio Kit (cod.): 90836

TELECONTROLLER. PROGRAMMING. Select the days of the week on which to activate the programmed watering cycles (**WEEKLY SCHEDULE**). Press the **OK** button to access weekly programming. Press the **▶** button to cycle through the days of the week, which will blink when selected. Press the **OK** button repeatedly to cancel watering on the selected day. To quit, highlight EXIT by pressing the **▶** button repeatedly; when EXIT starts blinking, press **OK**. Press the **▶** button to view the next programming page.


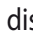

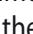
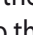




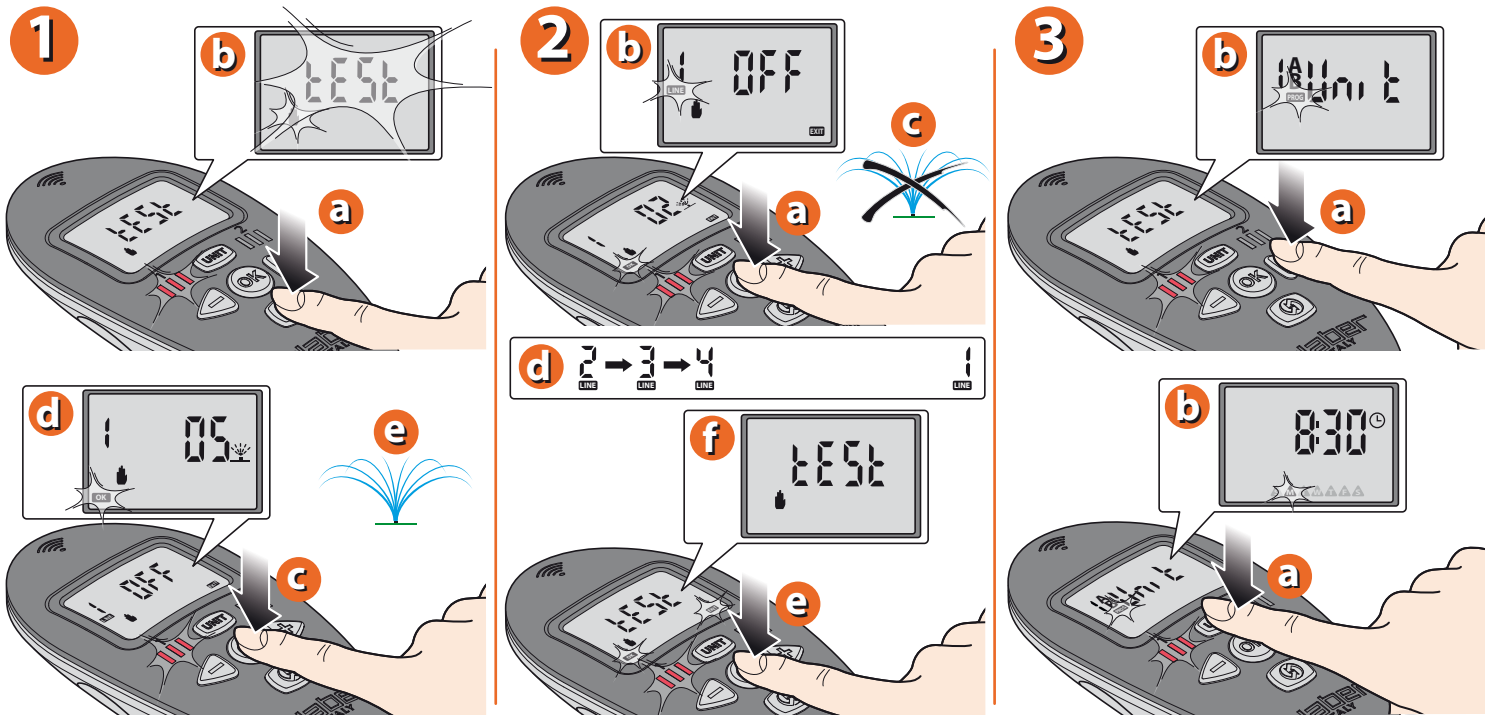
For Aquaradio Kit (cod.): 90836

TELECONTROLLER. RAIN SENSOR. Press the **OK** button to access activation/deactivation of the Rain Sensor; the OK message will blink. Pressing the **▶** button, the option can be toggled between YES (sensor activated) and NO (sensor deactivated). Press the **OK** button to confirm. Press the **▶** button to view the next programming page.




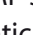


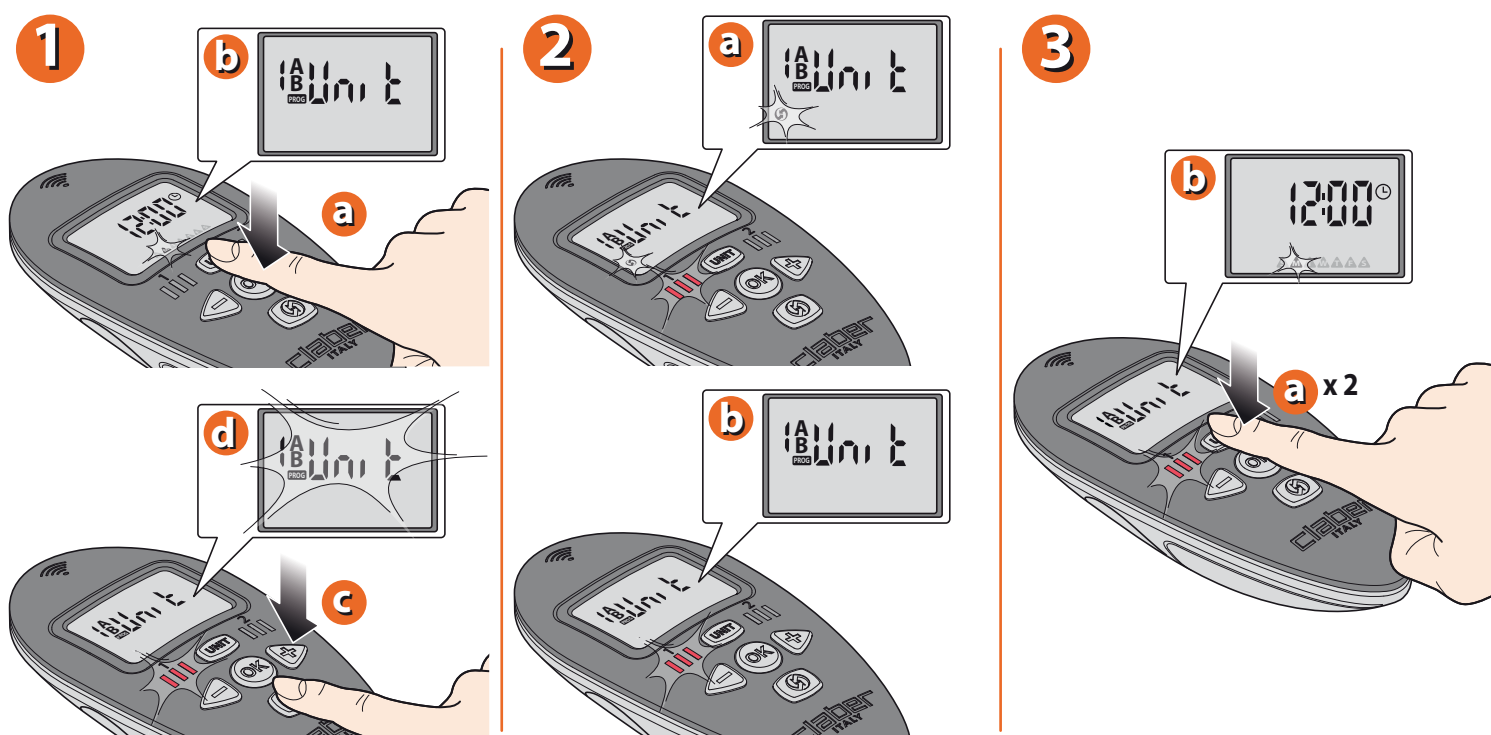
For Aquaradio Kit (cod.): 90836

TELECONTROLLER. TEST / MANUAL WATERING. Press the  button to activate communication between the remote control and the RF Unit; the TEST message will blink briefly. The display shows line 1 and the message OFF; press  to activate watering for a preset time of 5 minutes. Press  a second time to stop watering before the end of the preset time. To open the valves on another line 2, 3 or 4, press the  button and repeat the same procedure. To quit the function, press the  button until the TEST message appears, then press . Press  to go back to the UNIT page. To go back to the TIME/DAY page, press the UNIT button twice.



For Aquaradio Kit (cod.): 90836

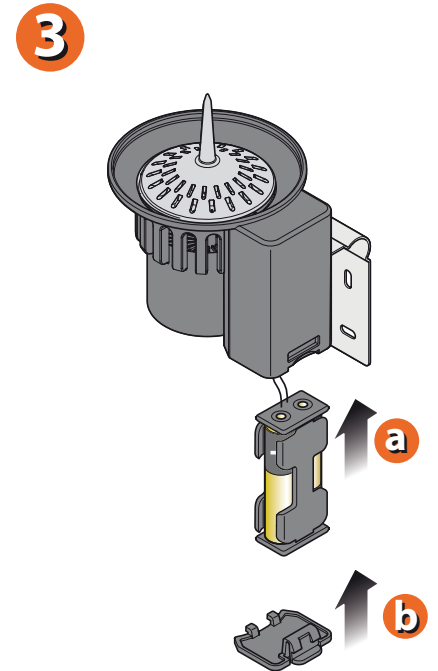
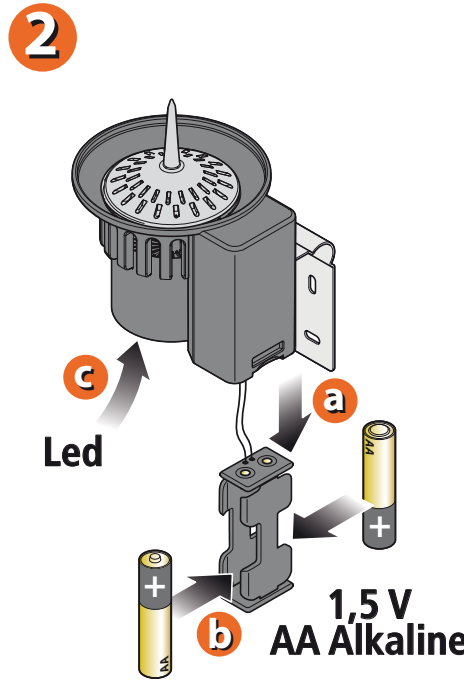
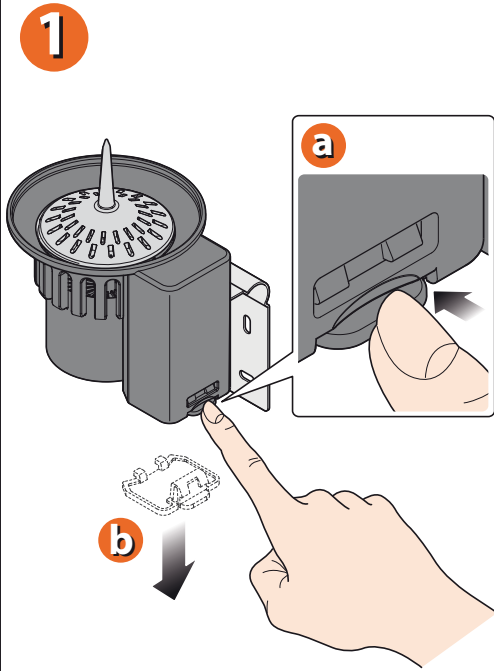
TELECONTROLLER. TRANSFER OF PROGRAMMING DATA TO RF UNIT. On the UNIT page, press the  button. The RF icon  will appear blinking on the display of the remote control for a few seconds, with the green reception signal blinking on the unit. The disappearance of the RF symbol  indicates that the update has been completed successfully, and the watering programmes will start automatically. To go back to the TIME/DAY page, press the  button twice.



For Aquaradio Kit (cod.): 90836

RF RAIN SENSOR. FITTING THE BATTERIES .

Fitting/replacement procedure: Press the tab firmly and pull downwards. Remove the cover of the battery housing. Draw the battery holder out of the housing. Fit the 2 batteries inside the holder, observing the correct polarity. Replace the battery holder in the housing. Refit the cover of the battery housing.



For Aquaradio Kit (cod.): 90836

For more information and further details, please consult the instruction manual supplied with the product.