

Quick Start Instructions

Setup Instruction Sheet for Craft Cutter.

STEP 1 **Install**
the FunTime software

STEP 2 **Install**
RocKey2 on computer

STEP 3 **Connect**
the cutter to a PC

STEP 4 **Install**
USB printer driver

STEP 5 **Run FunTime**
Configure your cutter

Craft and Scrapbooking Cutter User Manual

**Gazelle
USB port**

Thanks for choosing our mini cutters:

We are happy to find you joining the ever rapidly growing family of computer peripherals users.

By purchasing our cutter, you have become the owner of one of the most versatile single-tool cutters in the market. It is compact, reliable, the highest quality and has been assembled with the application of the most stringent quality checks.

But even more important, it is easy to use, as the following guide will show you.

We will tell you how to use your plotter and how to keep your plotter in good condition. If you have trouble in using the cutting plotter, please turn off the machine's power, then look for the solution in this manual; or connect to the machine dealer who will help you to resolve the problem.

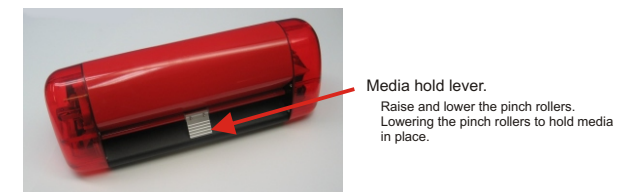
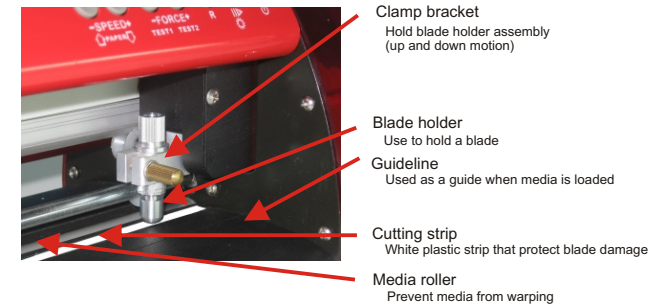
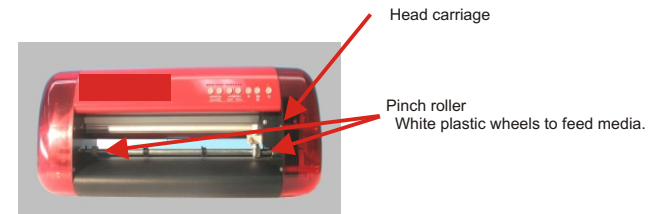
CONTENTS

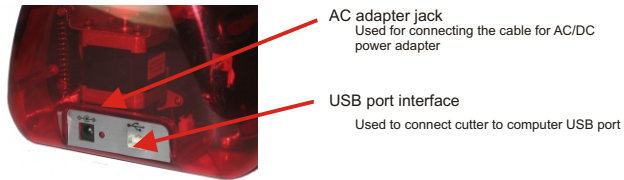
- (1) Notice when using your cutting plotter
- (2) Cutting plotter accessories
- (3) Main parts descriptions and key's function
- (4) Setting up the Plotter
- (5) Cutting blade and plotting pen
- (6) Load media / Load paper

Notice

- (1) Cutting plotter's power supply is DC Adaptor.
- (2) Don't touch the plotter's track when it is running. If the plotter is damaged or works incorrectly for this reason, we will repair your plotter but we WILL charge for any broken parts & labor, we are able to spot when this has happened very easily.
- (3) Prevent small items from being drawn into plotter.
- (4) Please disconnect the power supply if you don't use the plotter for a long period of time.
- (5) Do not disconnect the cutting plotter or computer when powered up.

Main parts descriptions and key's function



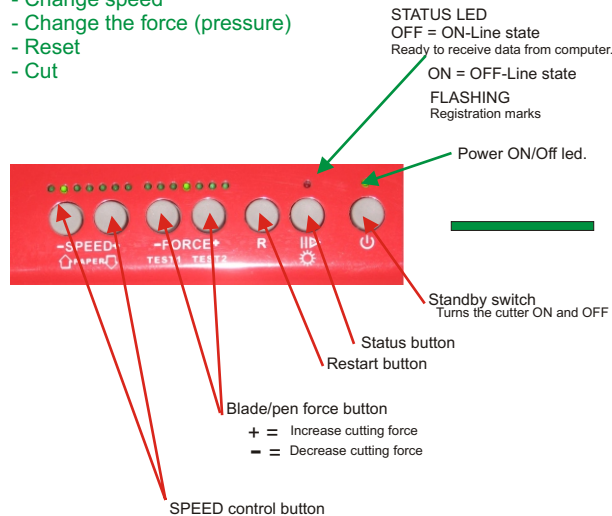


AC adapter jack
Used for connecting the cable for AC/DC power adapter

USB port interface
Used to connect cutter to computer USB port

In Green State (mode), you can:

- Change speed
- Change the force (pressure)
- Reset
- Cut



STATUS LED
OFF = ON-Line state
Ready to receive data from computer.
ON = OFF-Line state
FLASHING
Registration marks

Power ON/Off led.

Standby switch
Turns the cutter ON and OFF

Status button
Restart button

Blade/pen force button
+ = Increase cutting force
- = Decrease cutting force

SPEED control button

In Red State (mode), you can:

- Move in or out the media
- Test cutting parameters (test cut) = Press Test 2 button
- Activate the cropmarks reading = Press Test 1 button
- Stop the cropmarks reading = Press Test 1 button 2 seconds



Red led glow = Red State

Note: Never move the pinch roller handle side to side by using the arm, instead, move it by the centre.

Setting up the Plotter

(1) Placing the plotter

The plotter should be mounted on as near a horizontal plane as possible. Make sure the plotter has enough space to insert vinyl or media paper at the back and eject vinyl at the front. Do not shake the plotter when it is running. Do not touch the plotter with anything magnetic. Keep the environment surrounding the plotter clean.

(2) Initializing the plotter:

Connect the power adaptor; switch the power on, the red LED on the keyboard will light when power is on. The carriage should move to the right side, this is the cutting plotter initializing. The speed and pressure in 7 grades are shown on the panel.

STEP 2 Install the FunTime software

To install the FunTime scrapbooking software:

Check that the cutter is not connected to your computer. Start Windows, be sure to close all open programs and insert the FunTime Scrapbooking program CD-ROM into the CD or DVD drive of your computer. If the autorun is active you will see the presentation screen. If you wish to install FunTime program software click the button to select your craft cutter and click the **install** button to reach the proper slide to begin installation and exit presentation.

Follow on the screen indication to complete the software installation.

STEP 3 Install RocKey2 on computer

Security key installation (dongle).

You can install anytime the security key, no driver to install or search, just place the security key (dongle) in a USB port. This can be done anytime before running the program.

STEP 4 Connect the cutter to a PC

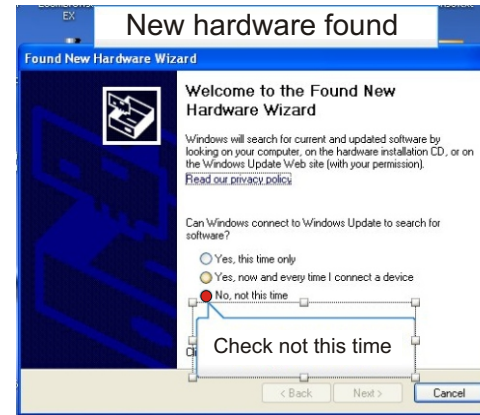
STEP 5 Install USB printer driver

(4) Connecting to the computer:

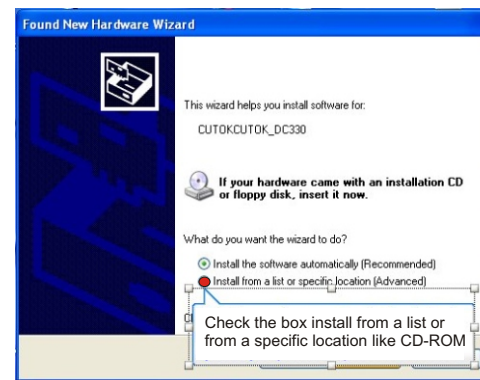
Turn Off the power of the computer.
Turn Off the power of the cutter.
Have in hand the USB CD driver "Cutok" as the driver.
Need a free USB port on your computer.
Power ON computer and power ON the cutter, wait for a moment until Windows run.
Connect one side of the USB cable to computer USB port, and the other end to cutter.
Windows detect a New Hardware
Insert Driver CD to install USB Driver. After installation restart the computer to activate the driver, run FunTime Scrapbooking and from setting menu configure the cutter.

Installation USB printer driver

When you connect the cutter to the computer using the USB cable and you power ON the cutter, Windows detects the presence of a new hardware.



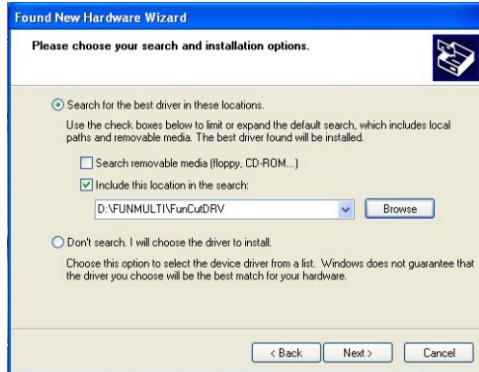
Check the box not this time to indicate USB driver to be installed



Check the box to install the driver selected from a list or a specific location.



Install driver from a list or a specific location.



The driver was found at the place indicated and Windows proceeds to its installation.



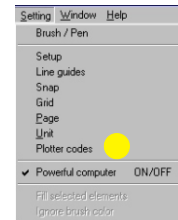
Windows finished the installation of the printer driver, click the Finish button.

Start again the computer.

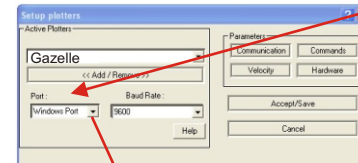
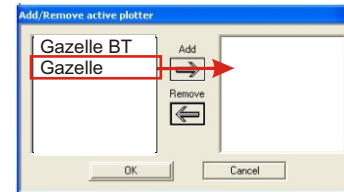
Software configuration: **STEP 6 Run FunTime**

Configure your cutter

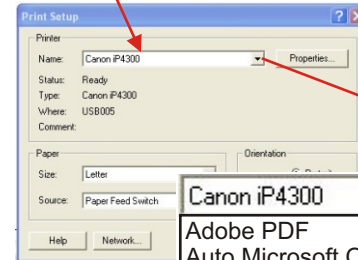
Run the **FunTime** software and from the **Setting** menu, click on **Plotter Codes**



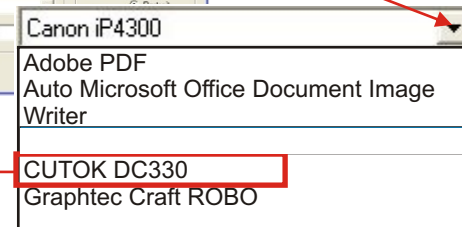
Then from the setup plotter window click on **Add/Remove**. Locate your plotter model, select it and click on the arrow to place the plotter in the active windows to the right. Finally click **OK** and **Accept/Save**



Use Windows Port.

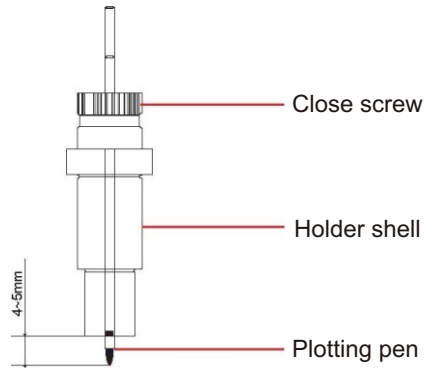


Click the USB Cutter button to open the selection printer driver box, select CutOK USB printer driver.



Click the OK button and the Accept/Save button.

Plotting pen:



Cutting plotters can be just as easily used as a pen plotter for CAD/CAM work, just insert the pen holder (supplied) and you can use the ball pen as plotting pen; keep the ball pen out of the holder between 4mm to 5mm. (3/16 inch)

Set the knife holder or pen holder on holder's seat:

Turn off the plotter power.
Set the holder on holder's seat, close the screw of seat of holder.

Load media / Load paper

Load media / Load paper:
Before you can move the roller, you must lift the handle first; the roller will not move until you do this.
Lift the handle, the roller will lift 1-2mm, then you can load your media.
Press down the handle, then you can press the Status button to obtain Off Line using the Speed buttons + or - to feed media continuously, the paper will roll to front or back; please confirm the paper must move straightly during the distance that you want to cut, press the reset button to obtain the Green State (On-Line).
Adjust the speed and pressure, and then you can output the data to the plotter.